

Data Path : Z:\pestpcbsrv\HPCHEM1\ECD_0\Data\PO113021\
 Data File : PO083275.D
 Signal(s) : Signal #1: ECD1A.CH Signal #2: ECD2B.CH
 Acq On : 01 Dec 2021 1:46
 Operator : AJ\MA
 Sample : M4862-03
 Misc :
 ALS Vial : 44 Sample Multiplier: 1

Instrument :
 ECD_0
ClientSampleId :
 CS-2B

Manual Integrations
APPROVED

Reviewed By :Ankita Jodhani 12/01/2021
 Supervised By :mohammad ahmed 12/01/2021

Integration File signal 1: autoint1.e
 Integration File signal 2: autoint2.e
 Quant Time: Dec 01 04:30:01 2021
 Quant Method : Z:\pestpcbsrv\HPCHEM1\ECD_0\methods\PO111921.M
 Quant Title : GC EXTRACTABLES
 QLast Update : Sat Nov 20 02:49:51 2021
 Response via : Initial Calibration
 Integrator: ChemStation 6890 Scale Mode: Small noise peaks clipped

Volume Inj. : 2 µl
 Signal #1 Phase : ZB-MR1 Signal #2 Phase: ZB-MR2
 Signal #1 Info : 30Mx0.32mmx 0.50µ Signal #2 Info : 30M x 0.32mm x 0.25µm

Compound	RT#1	RT#2	Resp#1	Resp#2	ng/ml	ng/ml

System Monitoring Compounds						
1) SA Tetrachlo...	4.947	3.950	2064502	673845	23.525	22.106
2) SA Decachlor...	11.036	9.254	1596463	624088	24.278	20.760
Target Compounds						
26) L6 AR-1254-1	7.197	6.078	90279	52932	32.441	27.222
27) L6 AR-1254-2	7.430	6.238	193553	59095	46.525	35.122
28) L6 AR-1254-3	7.814	6.657	268340	82304	62.476	32.194m#
29) L6 AR-1254-4	8.112	6.899	148747	80891	48.089	44.341m
30) L6 AR-1254-5	8.543	7.330	167289	605840	52.182	260.362 #

(f)=RT Delta > 1/2 Window (#)=Amounts differ by > 25% (m)=manual int.

Data Path : Z:\pestpcbsrv\HPCHEM1\ECD_0\Data\PO113021\
 Data File : P0083275.D
 Signal(s) : Signal #1: ECD1A.CH Signal #2: ECD2B.CH
 Acq On : 01 Dec 2021 1:46
 Operator : AJ\MA
 Sample : M4862-03
 Misc :
 ALS Vial : 44 Sample Multiplier: 1

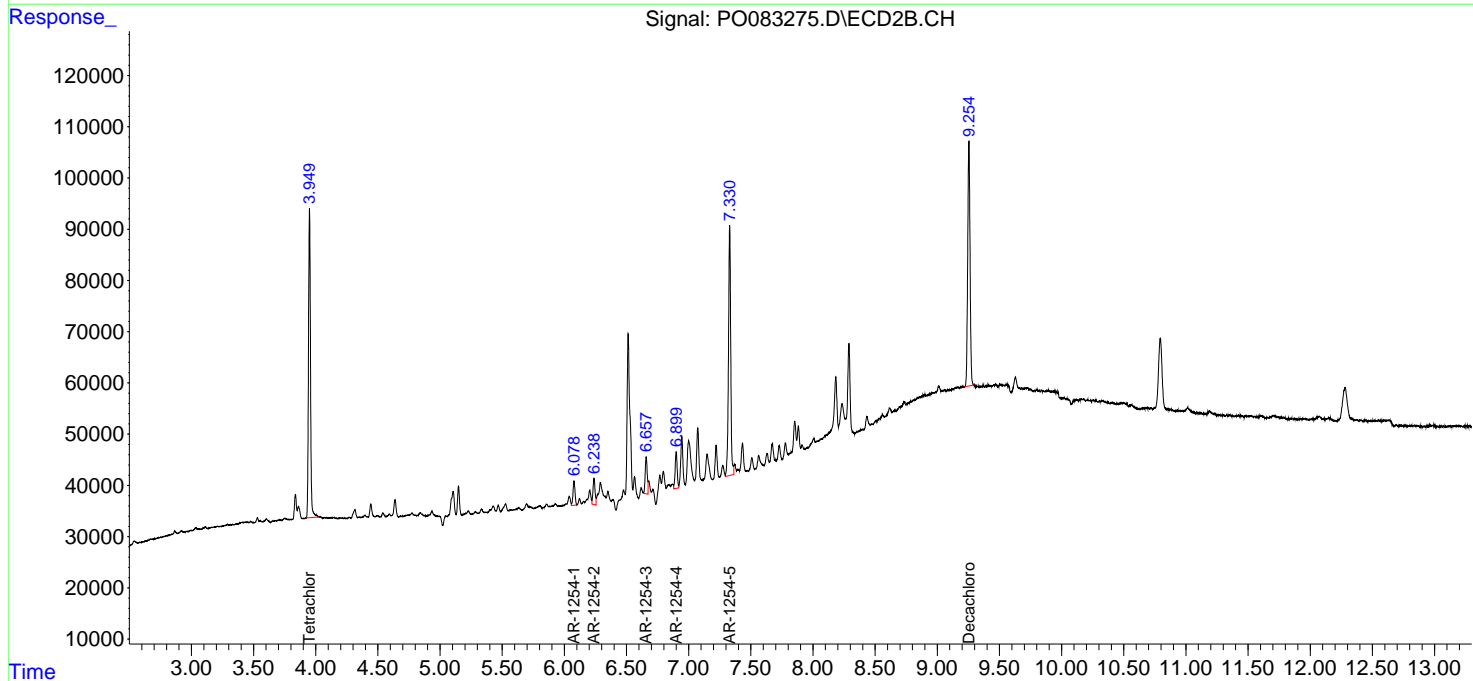
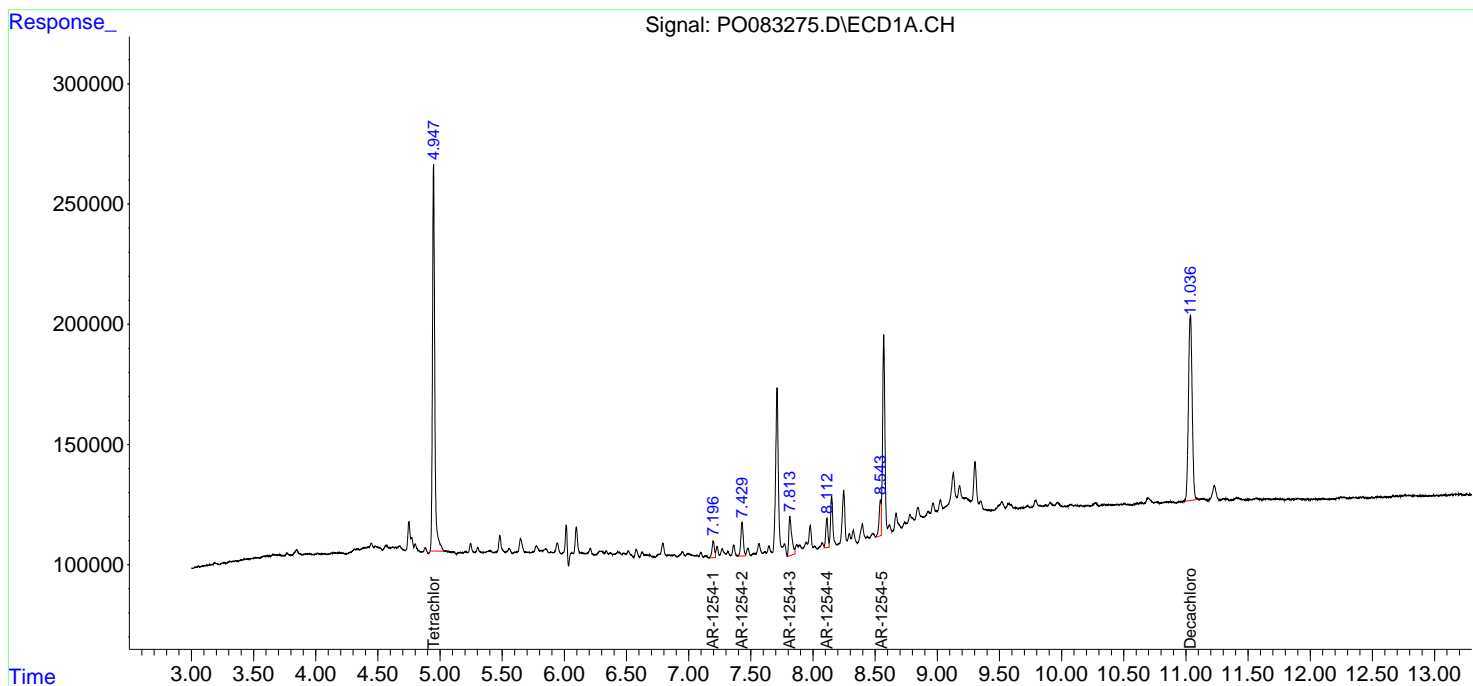
Instrument :
 ECD_0
 ClientSampleId :
 CS-2B

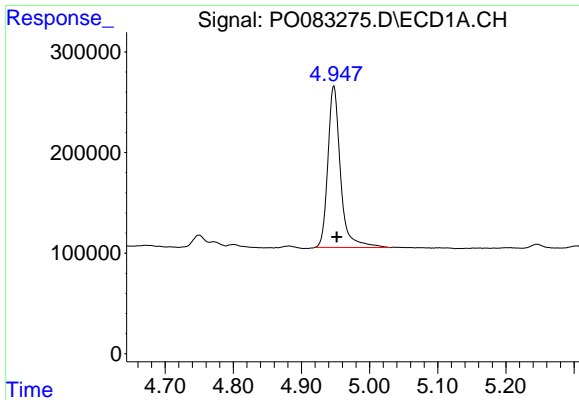
Manual Integrations
 APPROVED

Reviewed By :Ankita Jodhani 12/01/2021
 Supervised By :mohammad ahmed 12/01/2021

Integration File signal 1: autoint1.e
 Integration File signal 2: autoint2.e
 Quant Time: Dec 01 04:30:01 2021
 Quant Method : Z:\pestpcbsrv\HPCHEM1\ECD_0\methods\PO111921.M
 Quant Title : GC EXTRACTABLES
 QLast Update : Sat Nov 20 02:49:51 2021
 Response via : Initial Calibration
 Integrator: ChemStation 6890 Scale Mode: Small noise peaks clipped

Volume Inj. : 2 µl
 Signal #1 Phase : ZB-MR1 Signal #2 Phase: ZB-MR2
 Signal #1 Info : 30Mx0.32mmx 0.50µ Signal #2 Info : 30M x 0.32mm x 0.25µm



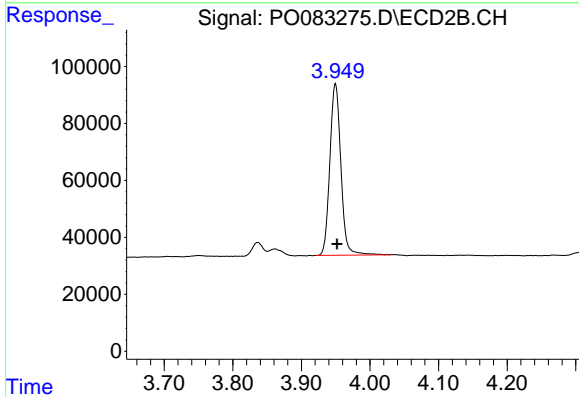


#1 Tetrachloro-m-xylene
 R.T.: 4.947 min
 Delta R.T.: -0.005 min
 Response: 2064502
 Conc: 23.52 ng/ml

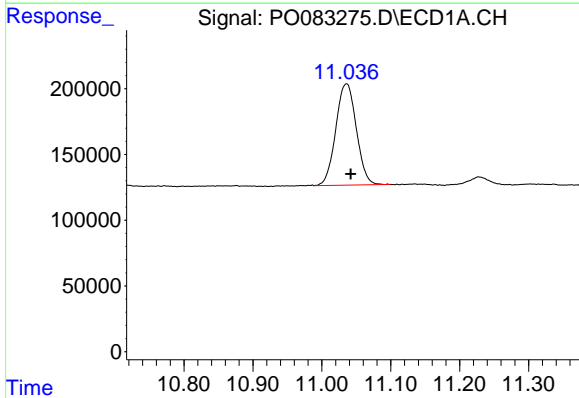
Instrument :
 ECD_O
 ClientSampleId :
 CS-2B

Manual Integrations
 APPROVED

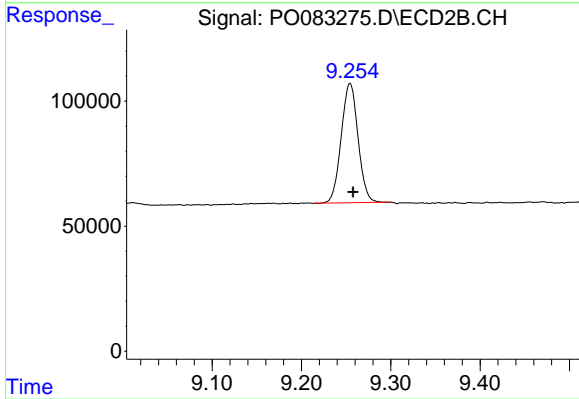
Reviewed By :Ankita Jodhani 12/01/2021
 Supervised By :mohammad ahmed 12/01/2021



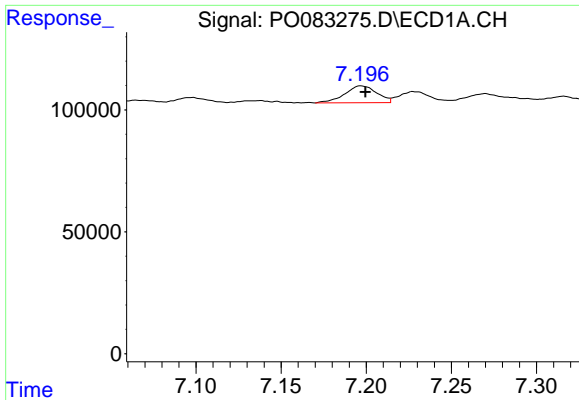
#1 Tetrachloro-m-xylene
 R.T.: 3.950 min
 Delta R.T.: -0.002 min
 Response: 673845
 Conc: 22.11 ng/ml



#2 Decachlorobiphenyl
 R.T.: 11.036 min
 Delta R.T.: -0.006 min
 Response: 1596463
 Conc: 24.28 ng/ml



#2 Decachlorobiphenyl
 R.T.: 9.254 min
 Delta R.T.: -0.003 min
 Response: 624088
 Conc: 20.76 ng/ml



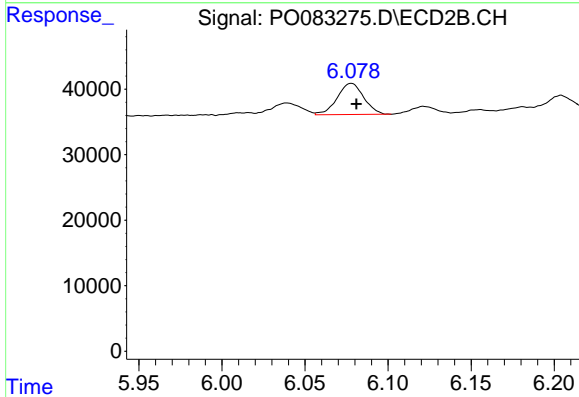
#26 AR-1254-1

R.T.: 7.197 min
 Delta R.T.: -0.003 min
 Response: 90279
 Conc: 32.44 ng/ml

Instrument :
 ECD_O
 ClientSampleId :
 CS-2B

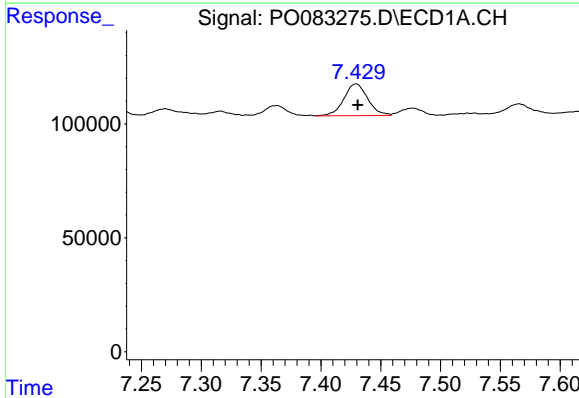
Manual Integrations
 APPROVED

Reviewed By :Ankita Jodhani 12/01/2021
 Supervised By :mohammad ahmed 12/01/2021



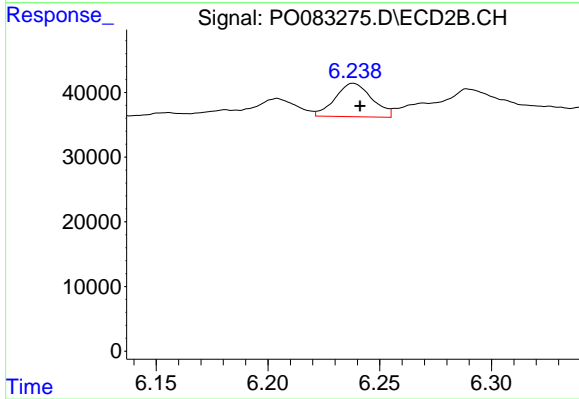
#26 AR-1254-1

R.T.: 6.078 min
 Delta R.T.: -0.003 min
 Response: 52932
 Conc: 27.22 ng/ml



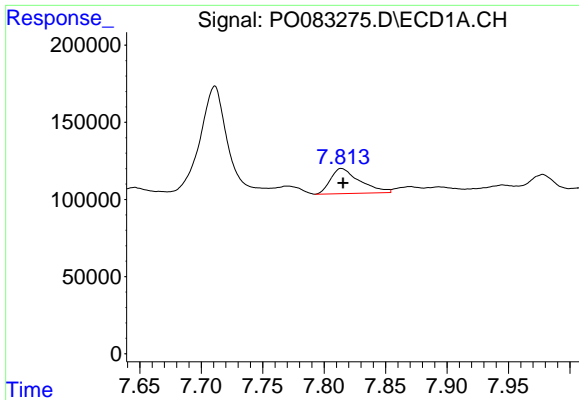
#27 AR-1254-2

R.T.: 7.430 min
 Delta R.T.: -0.001 min
 Response: 193553
 Conc: 46.53 ng/ml



#27 AR-1254-2

R.T.: 6.238 min
 Delta R.T.: -0.003 min
 Response: 59095
 Conc: 35.12 ng/ml

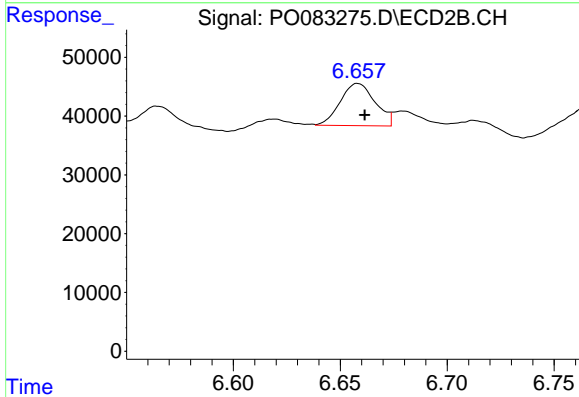


#28 AR-1254-3

R.T.: 7.814 min
 Delta R.T.: -0.001 min
 Response: 268340
 Conc: 62.48 ng/ml

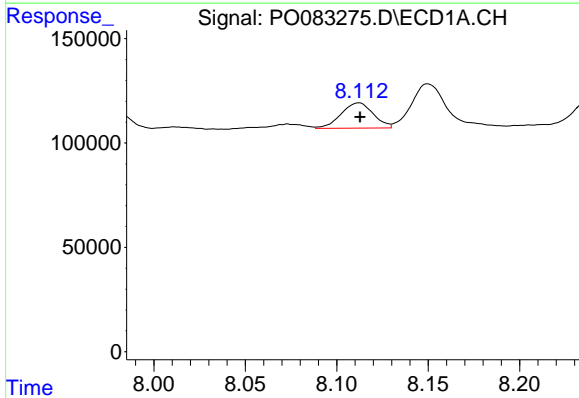
Instrument :
 ECD_O
 ClientSampleId :
 CS-2B

Manual Integrations
APPROVED
 Reviewed By :Ankita Jodhani 12/01/2021
 Supervised By :mohammad ahmed 12/01/2021



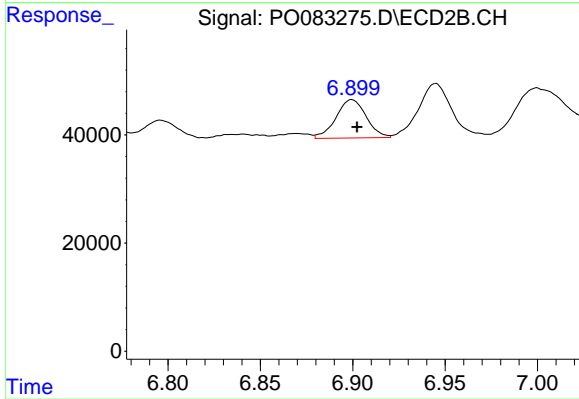
#28 AR-1254-3

R.T.: 6.657 min
 Delta R.T.: -0.004 min
 Response: 82304
 Conc: 32.19 ng/ml m



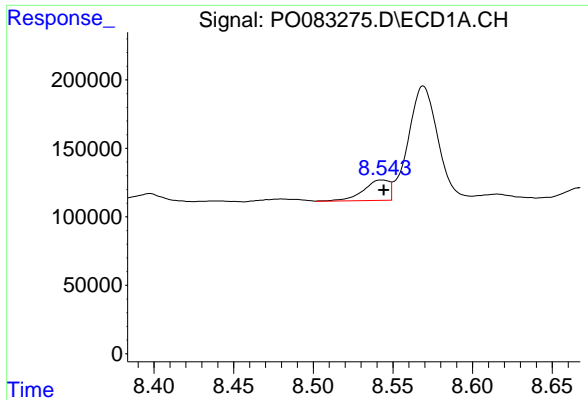
#29 AR-1254-4

R.T.: 8.112 min
 Delta R.T.: 0.000 min
 Response: 148747
 Conc: 48.09 ng/ml



#29 AR-1254-4

R.T.: 6.899 min
 Delta R.T.: -0.003 min
 Response: 80891
 Conc: 44.34 ng/ml m



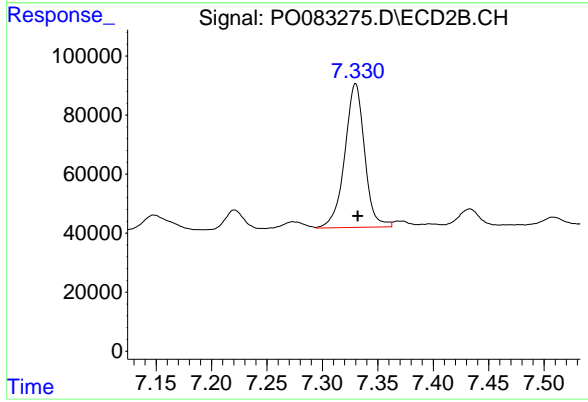
#30 AR-1254-5

R.T.: 8.543 min
 Delta R.T.: -0.001 min
 Response: 167289
 Conc: 52.18 ng/ml

Instrument :
 ECD_O
 ClientSampleId :
 CS-2B

Manual Integrations
 APPROVED

Reviewed By :Ankita Jodhani 12/01/2021
 Supervised By :mohammad ahmed 12/01/2021



#30 AR-1254-5

R.T.: 7.330 min
 Delta R.T.: -0.002 min
 Response: 605840
 Conc: 260.36 ng/ml