

Data Path : Z:\pestpcbsrv\HPCHEM1\ECD_0\Data\PO113023\
 Data File : PO100160.D
 Signal(s) : Signal #1: ECD1A.ch Signal #2: ECD2B.ch
 Acq On : 30 Nov 2023 10:36
 Operator : YP/AJ
 Sample : AR1660CCC500
 Misc :
 ALS Vial : 3 Sample Multiplier: 1

Instrument :
 ECD_0
 ClientSampleId :
 AR1660CCC500

Integration File signal 1: autoint1.e
 Integration File signal 2: autoint2.e
 Quant Time: Nov 30 13:30:58 2023
 Quant Method : Z:\pestpcbsrv\HPCHEM1\ECD_0\methods\PO112123.M
 Quant Title : GC EXTRACTABLES
 QLast Update : Tue Nov 21 15:58:40 2023
 Response via : Initial Calibration
 Integrator: ChemStation

Volume Inj. : 2 µl
 Signal #1 Phase : ZB-MR2 Signal #2 Phase: ZB-MR2
 Signal #1 Info : 30Mx0.32mmx 0.50µ Signal #2 Info : 30M x 0.32mm x 0.25µm

Compound	RT#1	RT#2	Resp#1	Resp#2	ng/ml	ng/ml

System Monitoring Compounds						
1) SA Tetrachlo...	4.482	3.704	70202191	61503493	41.130	41.005
2) SA Decachlor...	10.361	8.797	37104774	51322637	51.084	45.865
Target Compounds						
3) L1 AR-1016-1	5.669	4.809	18956645	13814004	440.582	437.481
4) L1 AR-1016-2	5.691	4.828	28584498	18996577	441.513	439.347
5) L1 AR-1016-3	5.754	5.007	18613136	10336081	427.044	445.693
6) L1 AR-1016-4	5.854	5.049	14296902	8489055	433.116	414.076
7) L1 AR-1016-5	6.153	5.266	13934483	11370148	443.796	445.850
31) L7 AR-1260-1	7.294	6.311	24305375	26064143	456.487	451.059
32) L7 AR-1260-2	7.553	6.500	26107009	31759330	493.542	478.183
33) L7 AR-1260-3	7.917	6.656	16617792	29652569	465.876	463.412
34) L7 AR-1260-4	8.146	7.133	19444013	23054605	469.797	457.193
35) L7 AR-1260-5	8.476	7.374	34079578	54010275	510.175	481.792

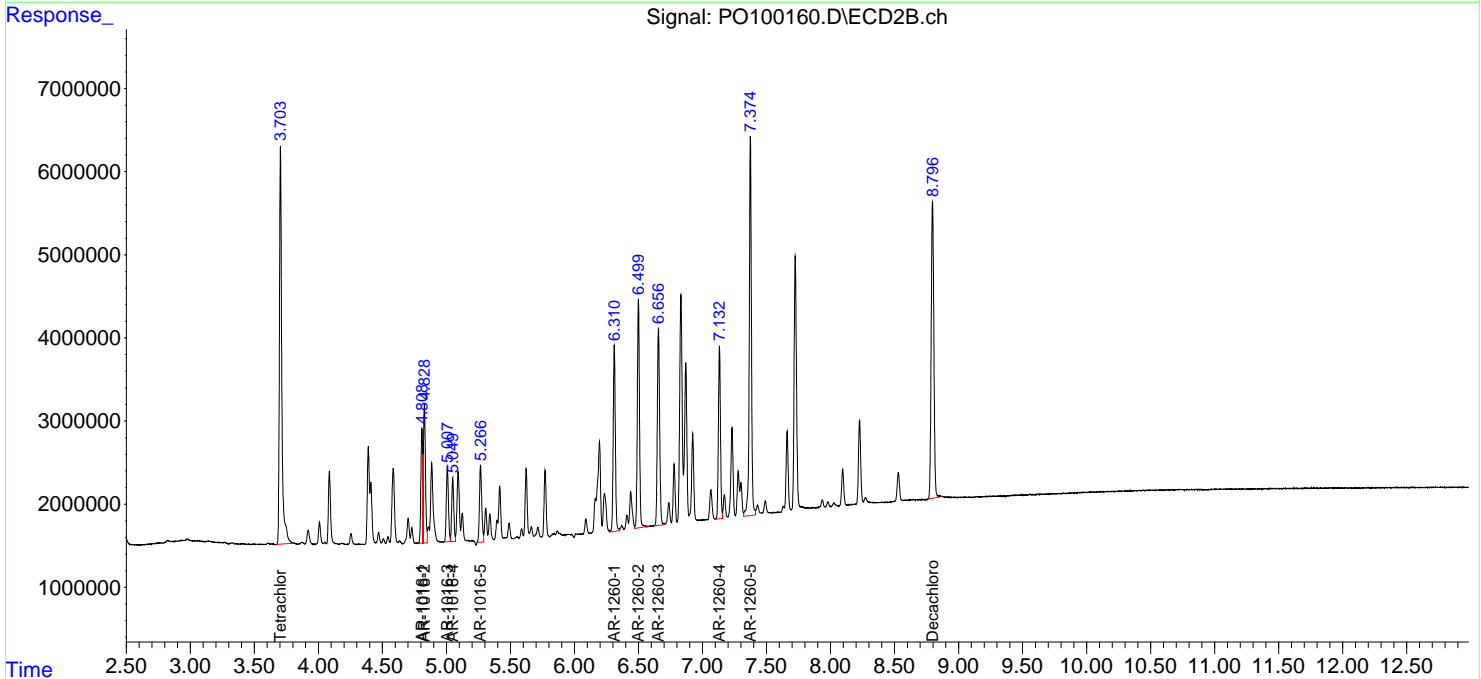
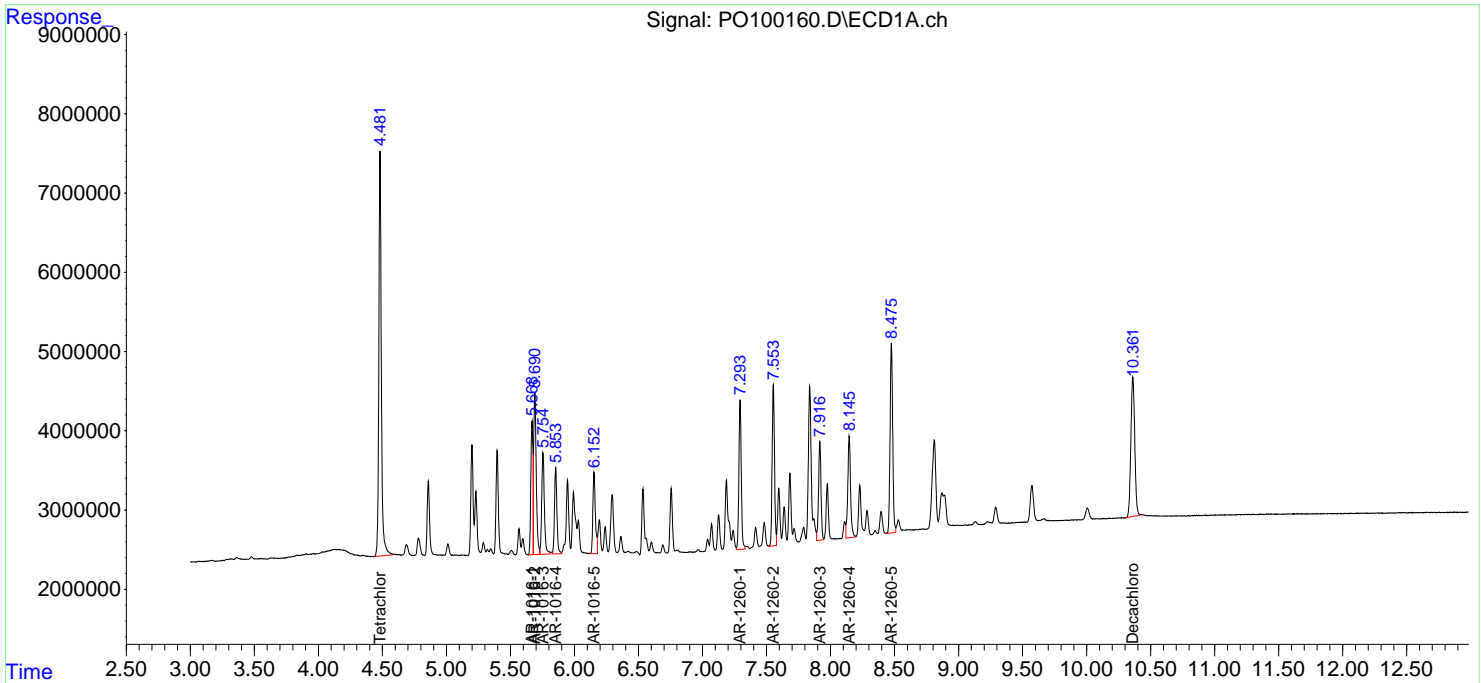
(f)=RT Delta > 1/2 Window (#)=Amounts differ by > 25% (m)=manual int.

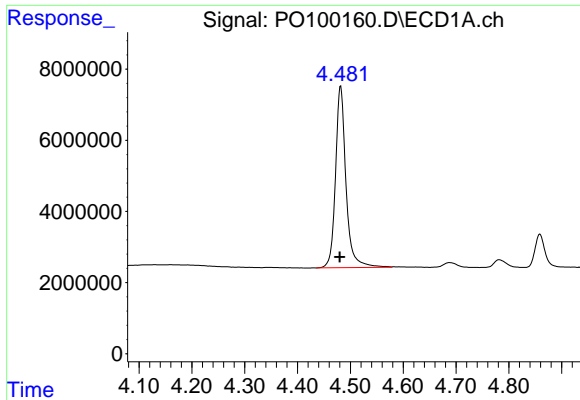
Data Path : Z:\pestpcbsrv\HPCHEM1\ECD_O\Data\PO113023\
 Data File : PO100160.D
 Signal(s) : Signal #1: ECD1A.ch Signal #2: ECD2B.ch
 Acq On : 30 Nov 2023 10:36
 Operator : YP/AJ
 Sample : AR1660CCC500
 Misc :
 ALS Vial : 3 Sample Multiplier: 1

Instrument :
 ECD_O
 ClientSampleId :
 AR1660CCC500

Integration File signal 1: autoint1.e
 Integration File signal 2: autoint2.e
 Quant Time: Nov 30 13:30:58 2023
 Quant Method : Z:\pestpcbsrv\HPCHEM1\ECD_O\methods\PO112123.M
 Quant Title : GC EXTRACTABLES
 QLast Update : Tue Nov 21 15:58:40 2023
 Response via : Initial Calibration
 Integrator: ChemStation

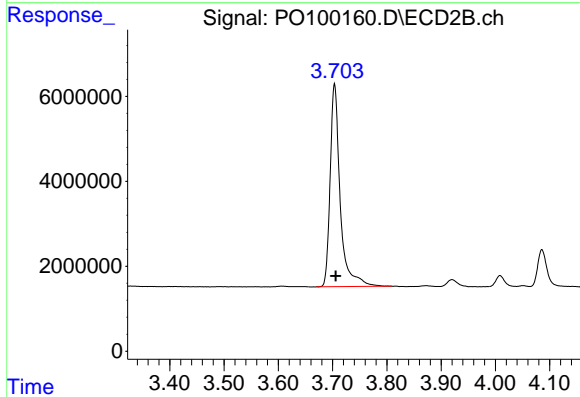
Volume Inj. : 2 µl
 Signal #1 Phase : ZB-MR1 Signal #2 Phase: ZB-MR2
 Signal #1 Info : 30Mx0.32mmx 0.50µ Signal #2 Info : 30M x 0.32mm x 0.25µm



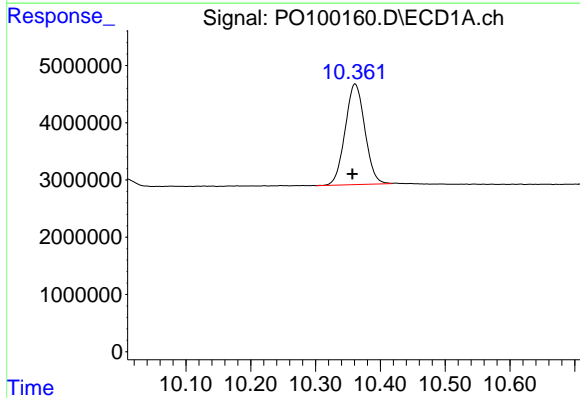


#1 Tetrachloro-m-xylene
 R.T.: 4.482 min
 Delta R.T.: 0.002 min
 Response: 70202191
 Conc: 41.13 ng/ml

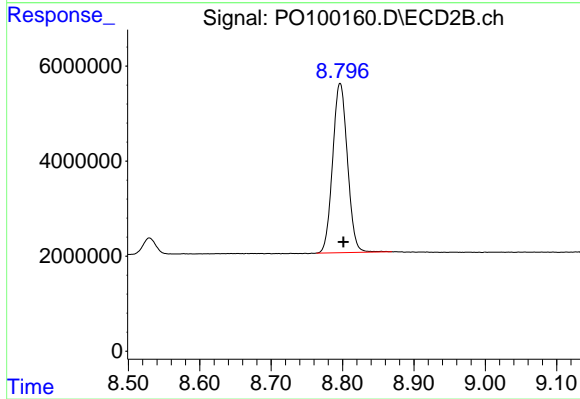
Instrument :
 ECD_O
 ClientSampleId :
 AR1660CCC500



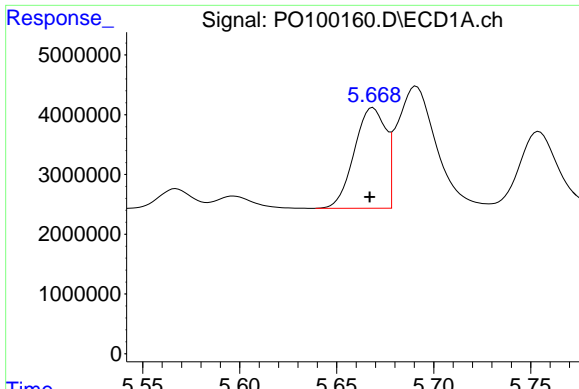
#1 Tetrachloro-m-xylene
 R.T.: 3.704 min
 Delta R.T.: -0.002 min
 Response: 61503493
 Conc: 41.01 ng/ml



#2 Decachlorobiphenyl
 R.T.: 10.361 min
 Delta R.T.: 0.004 min
 Response: 37104774
 Conc: 51.08 ng/ml



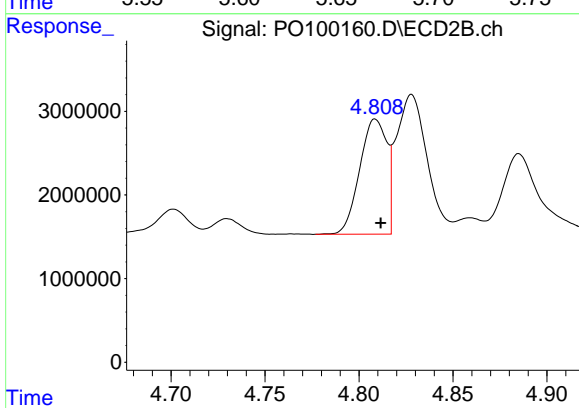
#2 Decachlorobiphenyl
 R.T.: 8.797 min
 Delta R.T.: -0.004 min
 Response: 51322637
 Conc: 45.86 ng/ml



#3 AR-1016-1

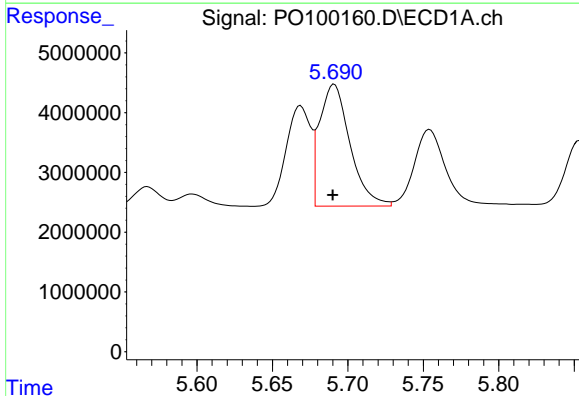
R.T.: 5.669 min
 Delta R.T.: 0.002 min
 Response: 18956645
 Conc: 440.58 ng/ml

Instrument :
 ECD_O
 ClientSampleId :
 AR1660CCC500



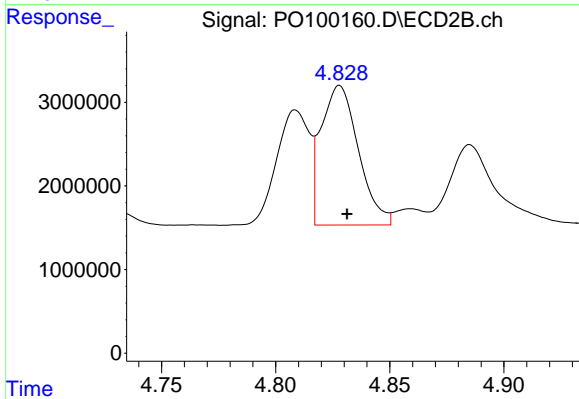
#3 AR-1016-1

R.T.: 4.809 min
 Delta R.T.: -0.003 min
 Response: 13814004
 Conc: 437.48 ng/ml



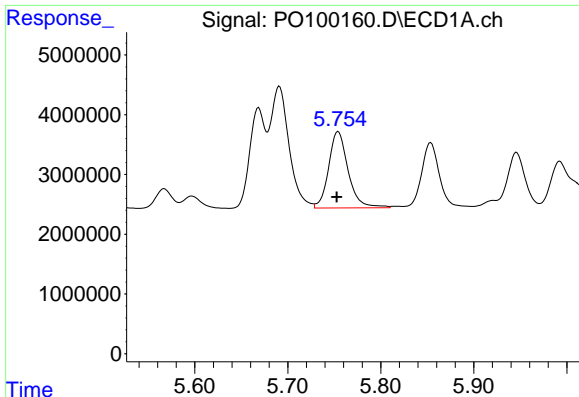
#4 AR-1016-2

R.T.: 5.691 min
 Delta R.T.: 0.000 min
 Response: 28584498
 Conc: 441.51 ng/ml



#4 AR-1016-2

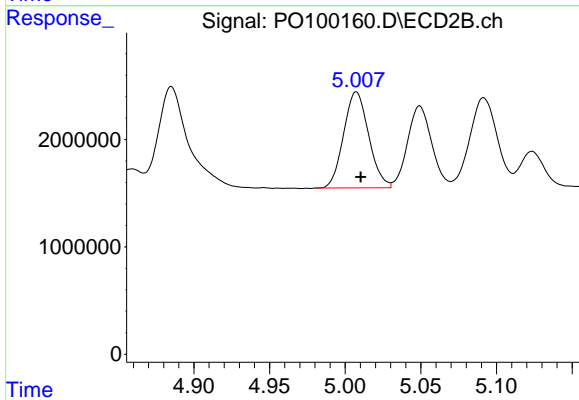
R.T.: 4.828 min
 Delta R.T.: -0.003 min
 Response: 18996577
 Conc: 439.35 ng/ml



#5 AR-1016-3

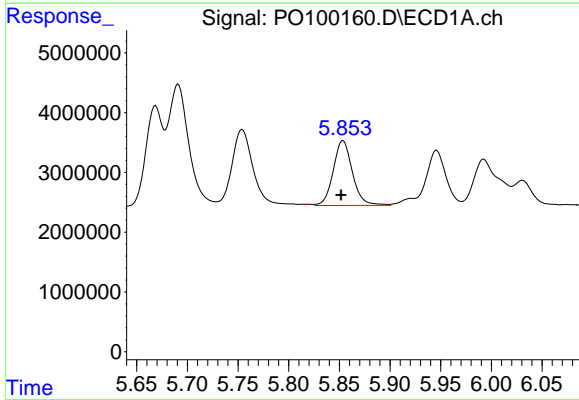
R.T.: 5.754 min
 Delta R.T.: 0.002 min
 Response: 18613136
 Conc: 427.04 ng/ml

Instrument :
 ECD_O
 ClientSampleId :
 AR1660CCC500



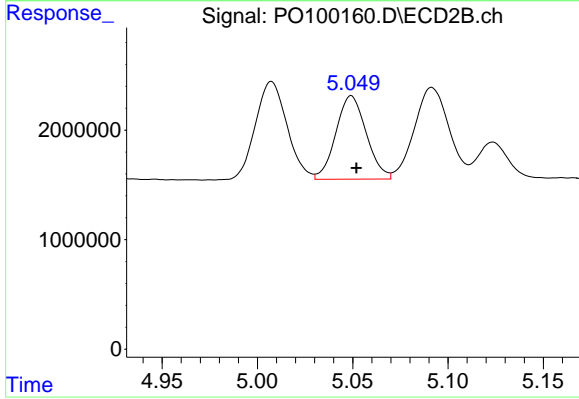
#5 AR-1016-3

R.T.: 5.007 min
 Delta R.T.: -0.003 min
 Response: 10336081
 Conc: 445.69 ng/ml



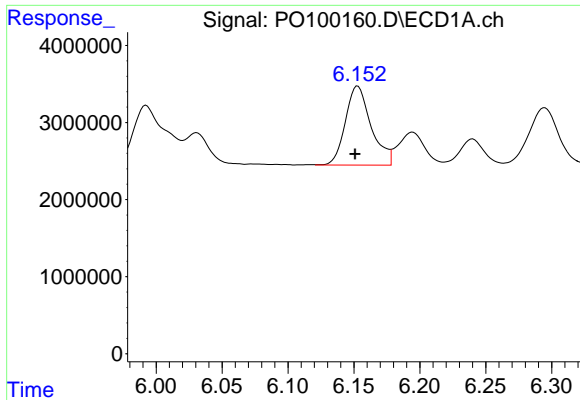
#6 AR-1016-4

R.T.: 5.854 min
 Delta R.T.: 0.002 min
 Response: 14296902
 Conc: 433.12 ng/ml



#6 AR-1016-4

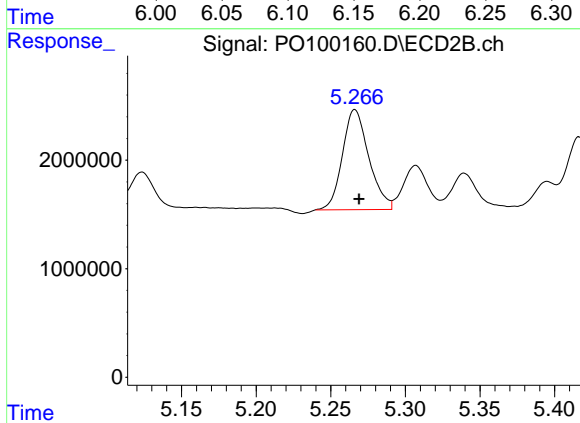
R.T.: 5.049 min
 Delta R.T.: -0.003 min
 Response: 8489055
 Conc: 414.08 ng/ml



#7 AR-1016-5

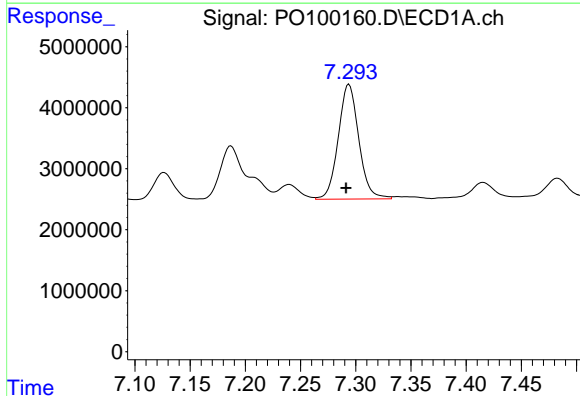
R.T.: 6.153 min
 Delta R.T.: 0.002 min
 Response: 13934483
 Conc: 443.80 ng/ml

Instrument :
 ECD_O
 ClientSampleId :
 AR1660CCC500



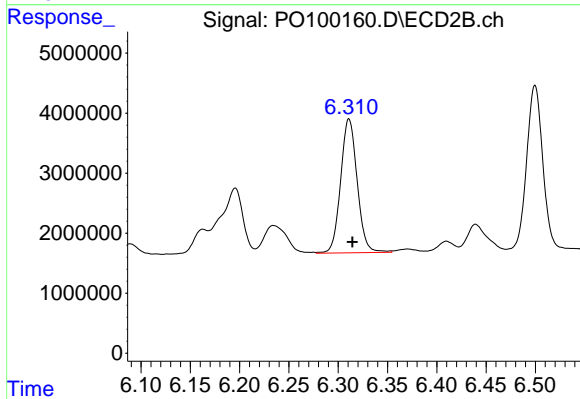
#7 AR-1016-5

R.T.: 5.266 min
 Delta R.T.: -0.003 min
 Response: 11370148
 Conc: 445.85 ng/ml



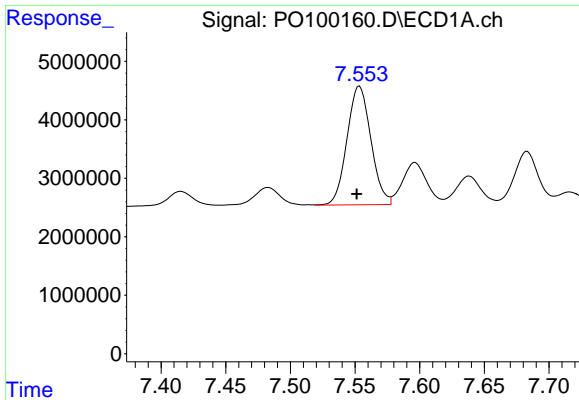
#31 AR-1260-1

R.T.: 7.294 min
 Delta R.T.: 0.003 min
 Response: 24305375
 Conc: 456.49 ng/ml



#31 AR-1260-1

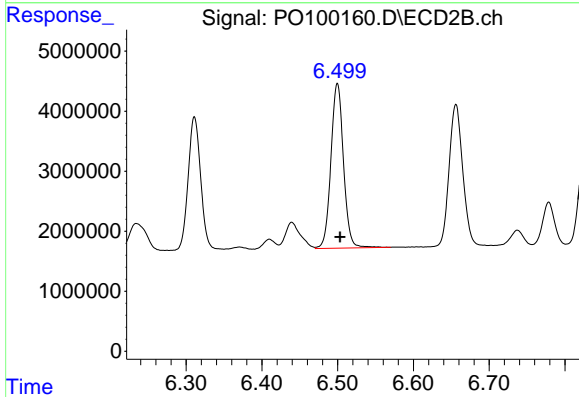
R.T.: 6.311 min
 Delta R.T.: -0.004 min
 Response: 26064143
 Conc: 451.06 ng/ml



#32 AR-1260-2

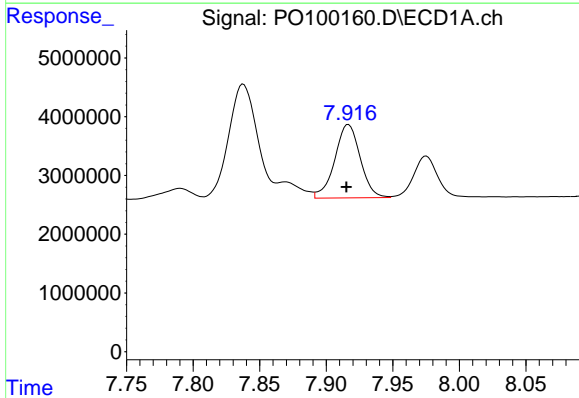
R.T.: 7.553 min
 Delta R.T.: 0.002 min
 Response: 26107009
 Conc: 493.54 ng/ml

Instrument :
 ECD_O
 ClientSampleId :
 AR1660CCC500



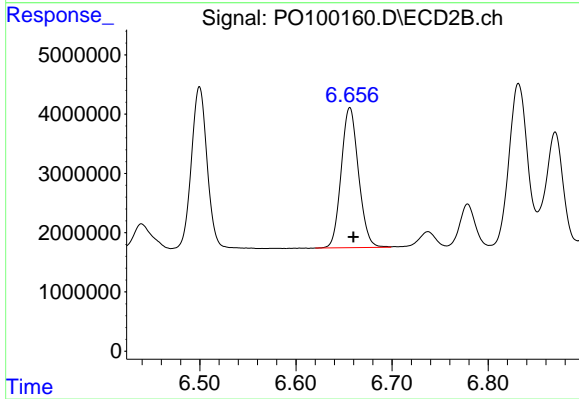
#32 AR-1260-2

R.T.: 6.500 min
 Delta R.T.: -0.003 min
 Response: 31759330
 Conc: 478.18 ng/ml



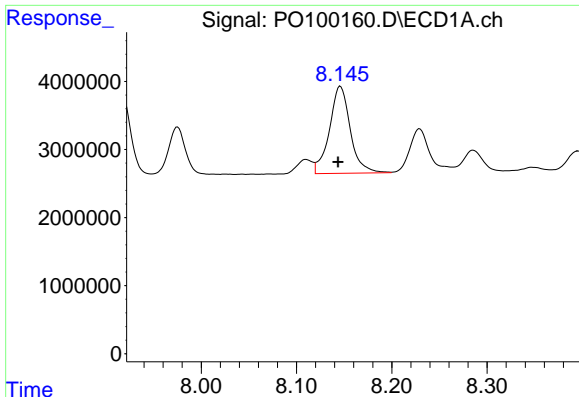
#33 AR-1260-3

R.T.: 7.917 min
 Delta R.T.: 0.002 min
 Response: 16617792
 Conc: 465.88 ng/ml



#33 AR-1260-3

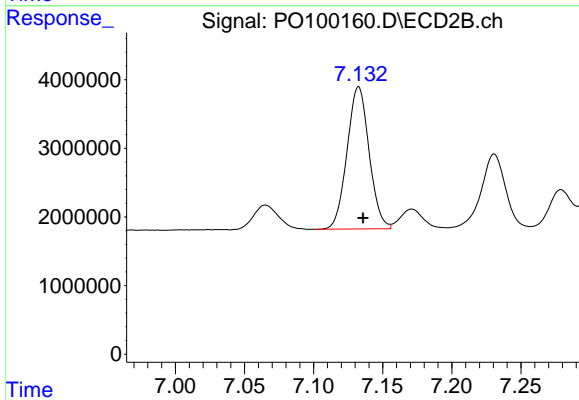
R.T.: 6.656 min
 Delta R.T.: -0.004 min
 Response: 29652569
 Conc: 463.41 ng/ml



#34 AR-1260-4

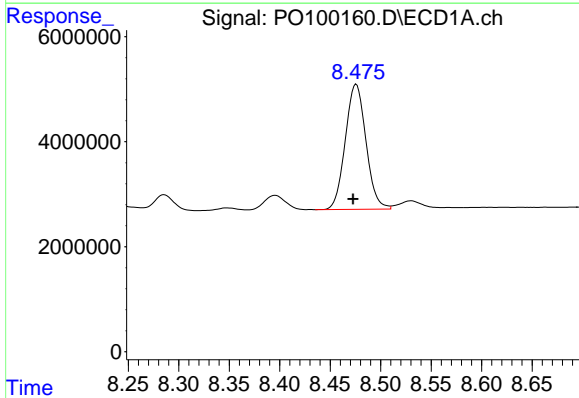
R.T.: 8.146 min
 Delta R.T.: 0.003 min
 Response: 19444013
 Conc: 469.80 ng/ml

Instrument :
 ECD_O
 ClientSampleId :
 AR1660CCC500



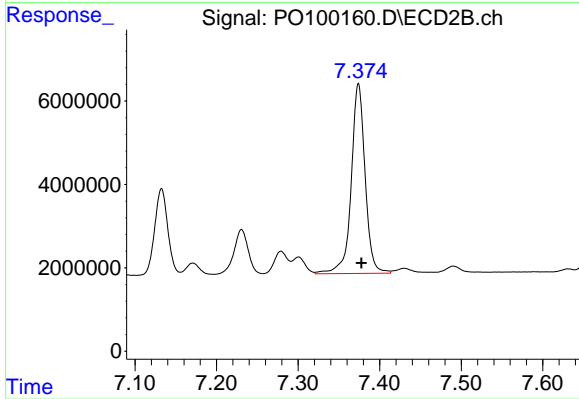
#34 AR-1260-4

R.T.: 7.133 min
 Delta R.T.: -0.003 min
 Response: 23054605
 Conc: 457.19 ng/ml



#35 AR-1260-5

R.T.: 8.476 min
 Delta R.T.: 0.003 min
 Response: 34079578
 Conc: 510.18 ng/ml



#35 AR-1260-5

R.T.: 7.374 min
 Delta R.T.: -0.004 min
 Response: 54010275
 Conc: 481.79 ng/ml