

Data Path : Z:\pestpcbsrv\HPCHEM1\ECD\_0\Data\PO120219\  
 Data File : P0064264.D  
 Signal(s) : Signal #1: ECD1A.CH Signal #2: ECD2B.CH  
 Acq On : 02 Dec 2019 17:24  
 Operator : SM/AJ  
 Sample : K6084-04  
 Misc :  
 ALS Vial : 22 Sample Multiplier: 1

Instrument :  
 ECD\_O  
 ClientSampled :  
 30735

Integration File signal 1: autoint1.e  
 Integration File signal 2: autoint2.e  
 Quant Time: Dec 03 01:34:00 2019  
 Quant Method : Z:\pestpcbsrv\HPCHEM1\ECD\_0\methods\PO112719.M  
 Quant Title : GC EXTRACTABLES  
 QLast Update : Thu Nov 28 01:28:08 2019  
 Response via : Initial Calibration  
 Integrator: ChemStation 6890 Scale Mode: Small noise peaks clipped

Volume Inj. : 2 µl  
 Signal #1 Phase : ZB-MR1 Signal #2 Phase: ZB-MR2  
 Signal #1 Info : 30Mx0.32mmx 0.50µ Signal #2 Info : 30M x 0.32mm x 0.25µm

Compound	RT#1	RT#2	Resp#1	Resp#2	ng/ml	ng/ml
-----						
System Monitoring Compounds						
1) SA Tetrachlo...	4.335	3.560	3505221	3053528	118.358	128.380
2) SA Decachlor...	9.943	8.526	744099	705482	18.156	17.270
Target Compounds						
3) L1 AR-1016-1	5.471	4.637	560934	1036340	432.104	989.809 #
4) L1 AR-1016-2	5.502	4.660	4571624	163432	2507.599	115.855 #
5) L1 AR-1016-3	5.565	4.848	356733	848804	310.814	1102.022 #
6) L1 AR-1016-4	5.676	4.891	217506	370473	231.285	569.503 #
7) L1 AR-1016-5	5.950	5.107	1959558	-21754	2013.696	N.D. #
8) L2 AR-1221-1	4.530	3.765	584773	36441235	1646.061	139293.637 #
9) L2 AR-1221-2	4.623	3.882	54902070	4202874	198570.468	21029.724 #
10) L2 AR-1221-3	4.676	3.942	6546755	833699	7796.703	1289.279 #
11) L3 AR-1232-1	4.676	3.942	6546755	833699	5106.367	823.238 #
12) L3 AR-1232-2	5.213	4.660	1876380	163432	2670.884	149.910 #
13) L3 AR-1232-3	5.502	4.848	4571624	848804	3301.236	1460.038 #
14) L3 AR-1232-4	5.676	4.934	217506	580975	305.708	1094.354 #
15) L3 AR-1232-5	5.745	5.107	758761	-21754	1347.198	N.D. #
16) L4 AR-1242-1	5.471	4.637	560934	1036340	589.096	1353.416 #
17) L4 AR-1242-2	5.502	4.660	4571624	163432	3384.897	158.185 #
18) L4 AR-1242-3	5.565	4.848	356733	848804	415.714	1514.585 #
19) L4 AR-1242-4	5.676	4.934	217506	580975	311.073	1024.331 #
20) L4 AR-1242-5	6.393	5.437	1121111	105934	1327.045	134.982 #
21) L5 AR-1248-1	5.471	4.637	560934	1036340	1000.052	2307.900 #
22) L5 AR-1248-2	5.745	4.891	758761	370473	915.603	589.182 #
23) L5 AR-1248-3	5.950	4.934	1959558	580975	2130.251	900.419 #
24) L5 AR-1248-4	6.340	5.107	56408	-21754	50.891	N.D. #
25) L5 AR-1248-5	6.393	5.437	1121111	105934	1044.862	87.436 #
26) L6 AR-1254-1	6.340	5.437	56408	105934	34.561	53.900 #
27) L6 AR-1254-2	6.539	5.559	705677	348328	270.702	194.499 #
28) L6 AR-1254-3	6.898	5.961	53009	246021	18.366	79.494 #
29) L6 AR-1254-4	7.202	6.224	27366	53325	11.949	25.845 #
30) L6 AR-1254-5	7.616	6.634	15064	98938	5.895	32.802 #
31) L7 AR-1260-1	7.061	6.135	94995	39482	50.337	22.494 #
32) L7 AR-1260-2	7.327	6.285	20053	67463	8.575	30.323 #
33) L7 AR-1260-3	7.668	6.436	47524	94517	25.670	46.486 #
34) L7 AR-1260-4	7.956	6.899	14091	40691	6.430	21.938 #
35) L7 AR-1260-5	0.000	7.155	0	26326	N.D.	5.438 #
36) L8 AR-1262-1	7.668	6.701	47524	93657	15.917	74.536 #
37) L8 AR-1262-2	0.000	7.155	0	26326	N.D.	4.413 #
38) L8 AR-1262-3	0.000	7.482	0	25436	N.D.	10.911 #
39) L8 AR-1262-4	0.000	7.482	0	25436	N.D.	5.712 #
41) L9 AR-1268-1	0.000	7.482	0	25436	N.D.	3.643 #
42) L9 AR-1268-2	0.000	7.482	0	25436	N.D.	3.973 #
-----						

Data Path : Z:\pestpcbsrv\HPCHEM1\ECD\_O\Data\PO120219\  
Data File : P0064264.D  
Signal(s) : Signal #1: ECD1A.CH Signal #2: ECD2B.CH  
Acq On : 02 Dec 2019 17:24  
Operator : SM/AJ  
Sample : K6084-04  
Misc :  
ALS Vial : 22 Sample Multiplier: 1

Instrument :  
ECD\_O  
ClientSampleId :  
30735

Integration File signal 1: autoint1.e  
Integration File signal 2: autoint2.e  
Quant Time: Dec 03 01:34:00 2019  
Quant Method : Z:\pestpcbsrv\HPCHEM1\ECD\_O\methods\PO112719.M  
Quant Title : GC EXTRACTABLES  
QLast Update : Thu Nov 28 01:28:08 2019  
Response via : Initial Calibration  
Integrator: ChemStation 6890 Scale Mode: Small noise peaks clipped

Volume Inj. : 2 µl  
Signal #1 Phase : ZB-MR1 Signal #2 Phase: ZB-MR2  
Signal #1 Info : 30Mx0.32mmx 0.50µ Signal #2 Info : 30M x 0.32mm x 0.25µm

Compound	RT#1	RT#2	Resp#1	Resp#2	ng/ml	ng/ml
----------	------	------	--------	--------	-------	-------

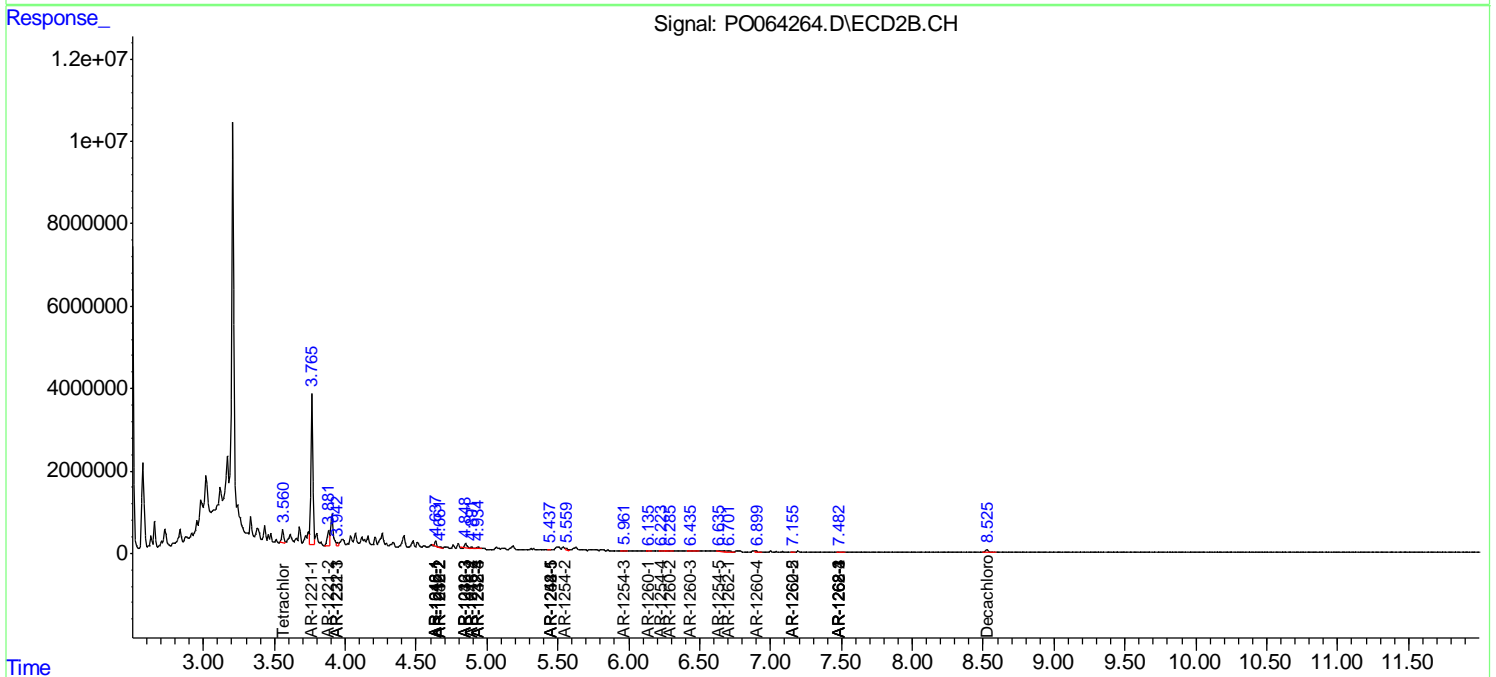
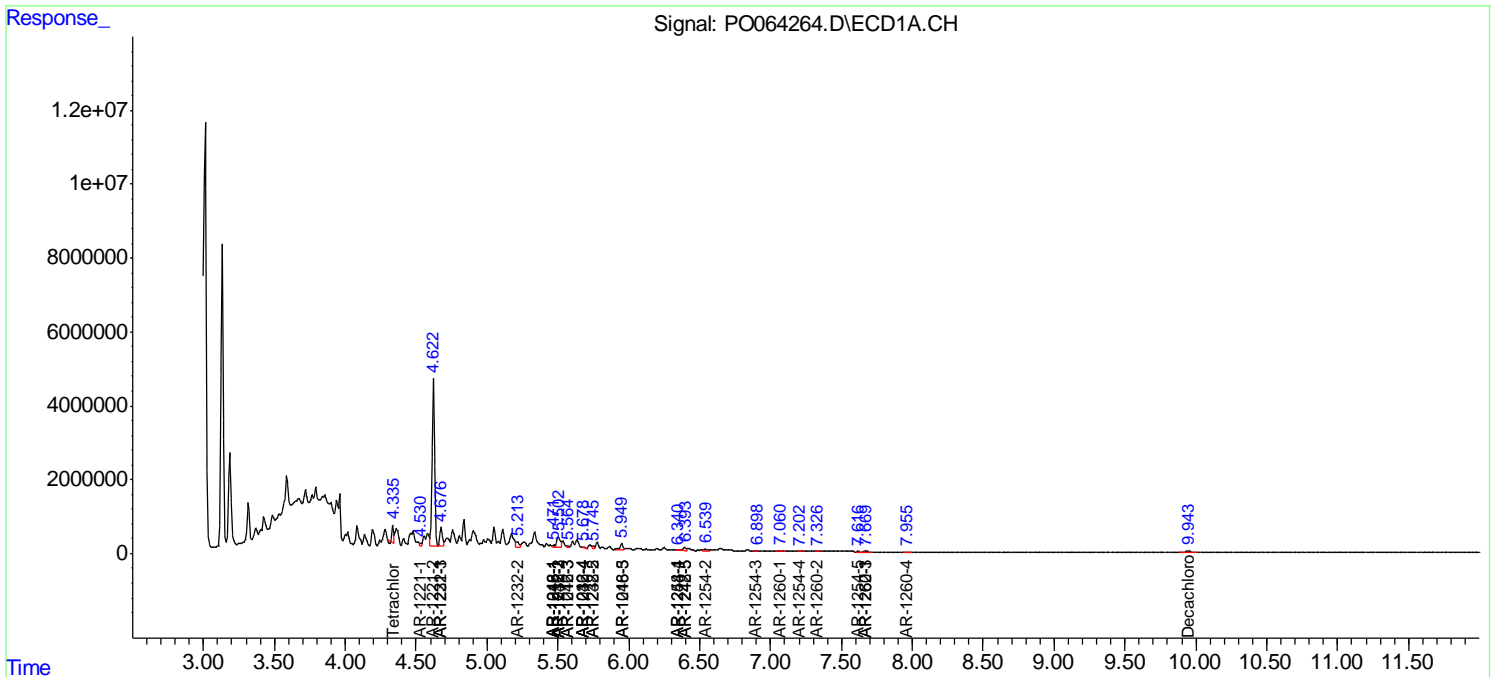
(f)=RT Delta > 1/2 Window (#)=Amounts differ by > 25% (m)=manual int.

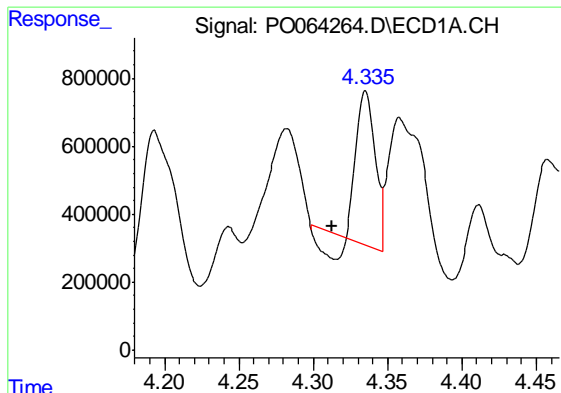
Data Path : Z:\pestpcbsrv\HPCHEM1\ECD\_O\Data\PO120219\  
 Data File : PO064264.D  
 Signal(s) : Signal #1: ECD1A.CH Signal #2: ECD2B.CH  
 Acq On : 02 Dec 2019 17:24  
 Operator : SM/AJ  
 Sample : K6084-04  
 Misc :  
 ALS Vial : 22 Sample Multiplier: 1

Instrument :  
 ECD\_O  
 ClientSampled :  
 30735

Integration File signal 1: autoint1.e  
 Integration File signal 2: autoint2.e  
 Quant Time: Dec 03 01:34:00 2019  
 Quant Method : Z:\pestpcbsrv\HPCHEM1\ECD\_O\methods\PO112719.M  
 Quant Title : GC EXTRACTABLES  
 QLast Update : Thu Nov 28 01:28:08 2019  
 Response via : Initial Calibration  
 Integrator: ChemStation 6890 Scale Mode: Small noise peaks clipped

Volume Inj. : 2 µl  
 Signal #1 Phase : ZB-MR1 Signal #2 Phase: ZB-MR2  
 Signal #1 Info : 30Mx0.32mmx 0.50µ Signal #2 Info : 30M x 0.32mm x 0.25µm

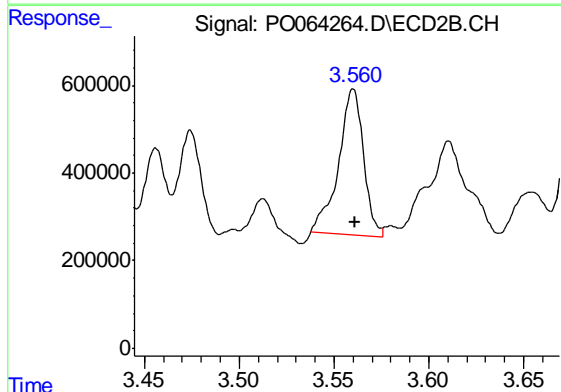




#1 Tetrachloro-m-xylene

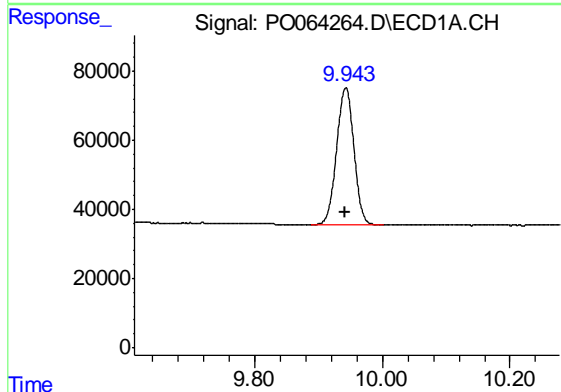
R.T.: 4.335 min  
 Delta R.T.: 0.022 min  
 Response: 3505221  
 Conc: 118.36 ng/ml

Instrument :  
 ECD\_O  
 ClientSampleId :  
 30735



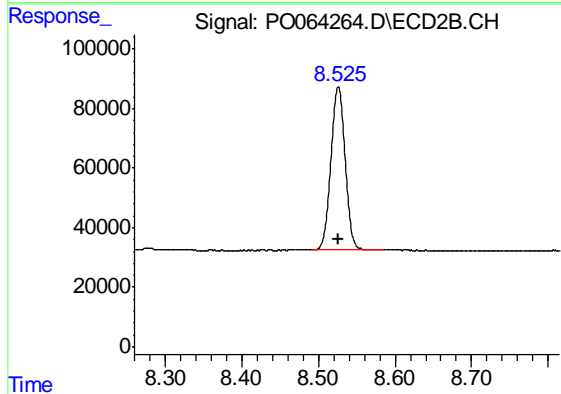
#1 Tetrachloro-m-xylene

R.T.: 3.560 min  
 Delta R.T.: -0.001 min  
 Response: 3053528  
 Conc: 128.38 ng/ml



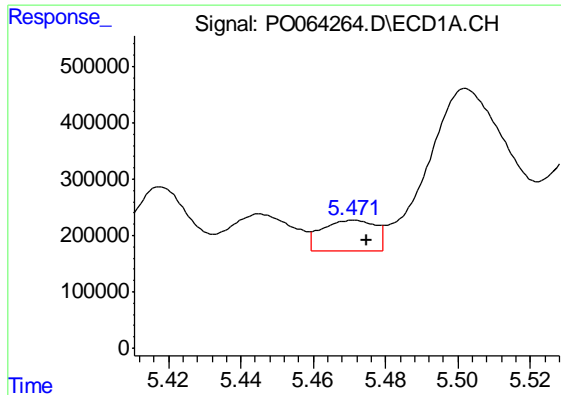
#2 Decachlorobiphenyl

R.T.: 9.943 min  
 Delta R.T.: 0.002 min  
 Response: 744099  
 Conc: 18.16 ng/ml



#2 Decachlorobiphenyl

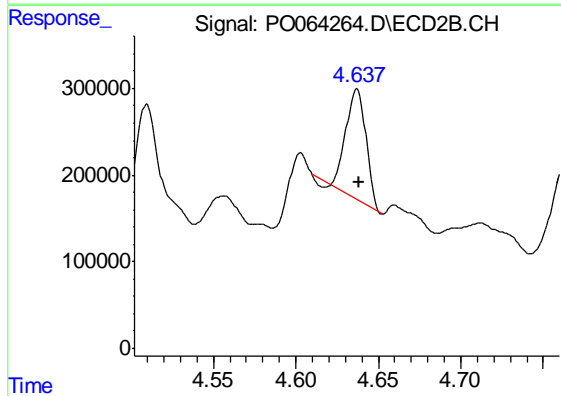
R.T.: 8.526 min  
 Delta R.T.: 0.000 min  
 Response: 705482  
 Conc: 17.27 ng/ml



#3 AR-1016-1

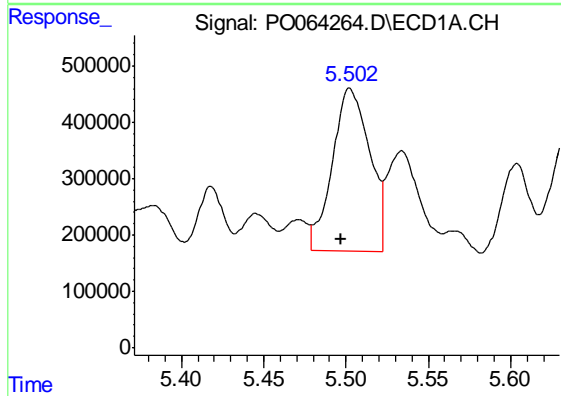
R.T.: 5.471 min  
 Delta R.T.: -0.004 min  
 Response: 560934  
 Conc: 432.10 ng/ml

Instrument :  
 ECD\_O  
 ClientSampleId :  
 30735



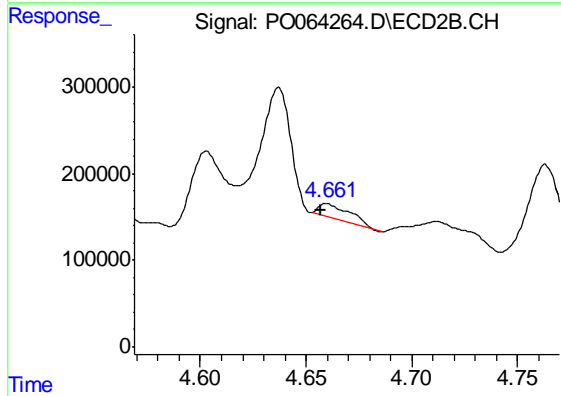
#3 AR-1016-1

R.T.: 4.637 min  
 Delta R.T.: -0.001 min  
 Response: 1036340  
 Conc: 989.81 ng/ml



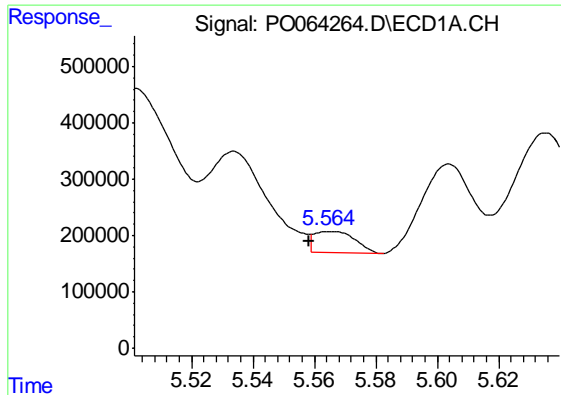
#4 AR-1016-2

R.T.: 5.502 min  
 Delta R.T.: 0.006 min  
 Response: 4571624  
 Conc: 2507.60 ng/ml



#4 AR-1016-2

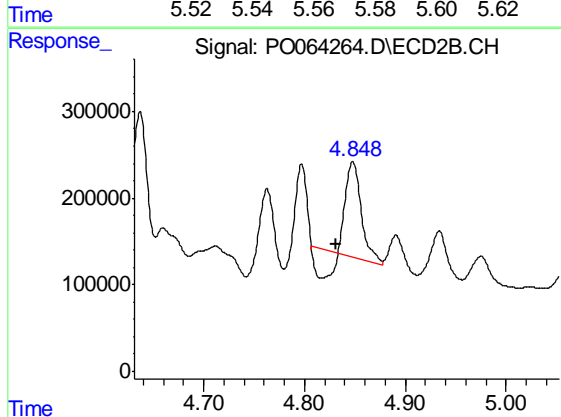
R.T.: 4.660 min  
 Delta R.T.: 0.003 min  
 Response: 163432  
 Conc: 115.85 ng/ml



#5 AR-1016-3

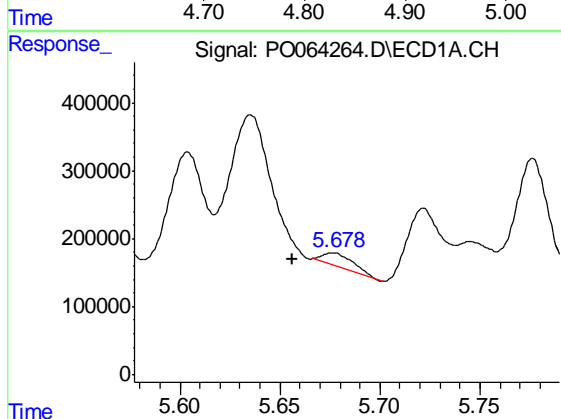
R.T.: 5.565 min  
 Delta R.T.: 0.007 min  
 Response: 356733  
 Conc: 310.81 ng/ml

Instrument :  
 ECD\_O  
 ClientSampleId :  
 30735



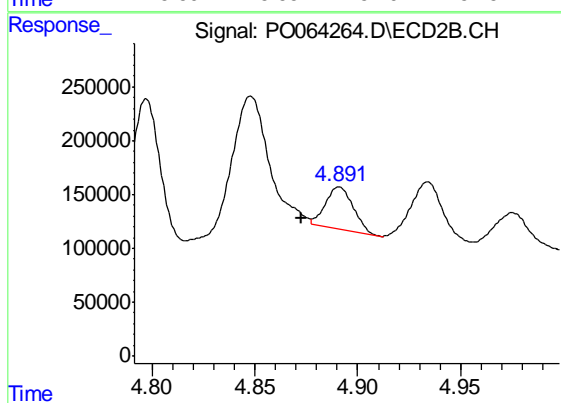
#5 AR-1016-3

R.T.: 4.848 min  
 Delta R.T.: 0.016 min  
 Response: 848804  
 Conc: 1102.02 ng/ml



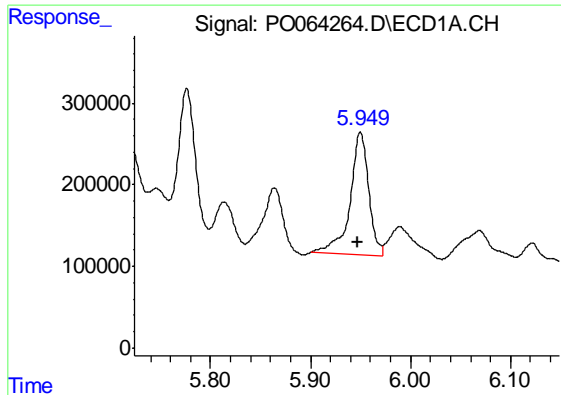
#6 AR-1016-4

R.T.: 5.676 min  
 Delta R.T.: 0.020 min  
 Response: 217506  
 Conc: 231.28 ng/ml



#6 AR-1016-4

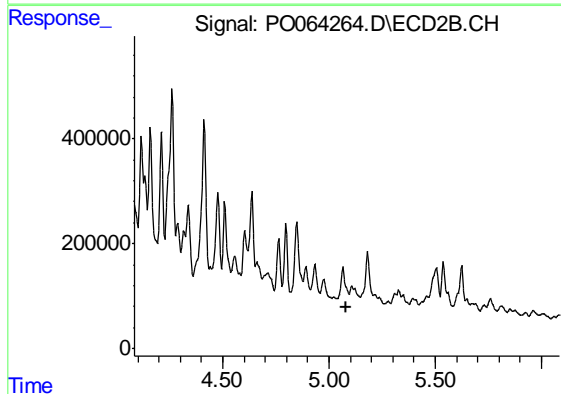
R.T.: 4.891 min  
 Delta R.T.: 0.019 min  
 Response: 370473  
 Conc: 569.50 ng/ml



#7 AR-1016-5

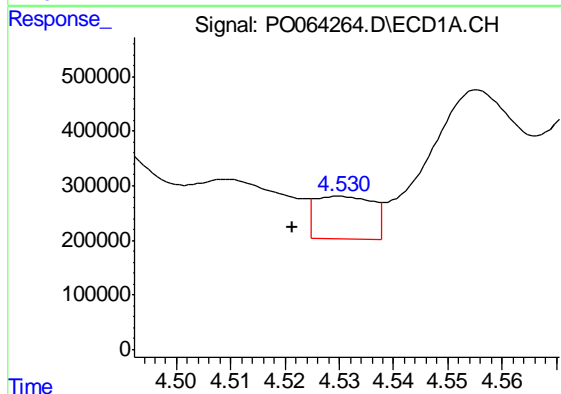
R.T.: 5.950 min  
 Delta R.T.: 0.002 min  
 Response: 1959558  
 Conc: 2013.70 ng/ml

Instrument :  
 ECD\_O  
 ClientSampled :  
 30735



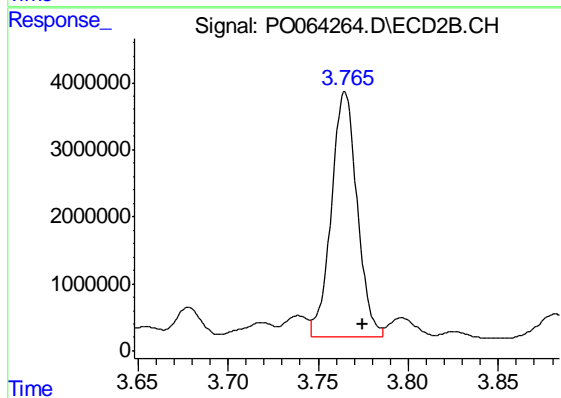
#7 AR-1016-5

R.T.: 5.107 min  
 Delta R.T.: 0.023 min  
 Response: -21754  
 Conc: N.D.



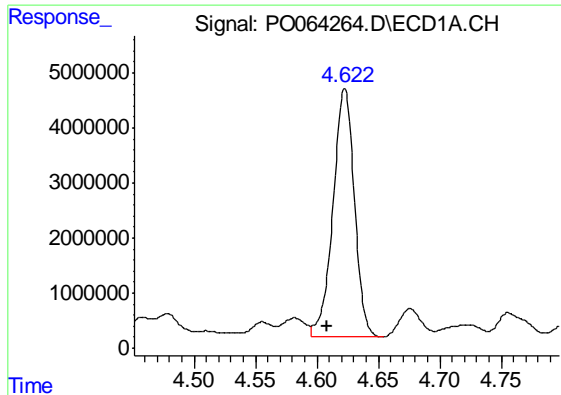
#8 AR-1221-1

R.T.: 4.530 min  
 Delta R.T.: 0.009 min  
 Response: 584773  
 Conc: 1646.06 ng/ml



#8 AR-1221-1

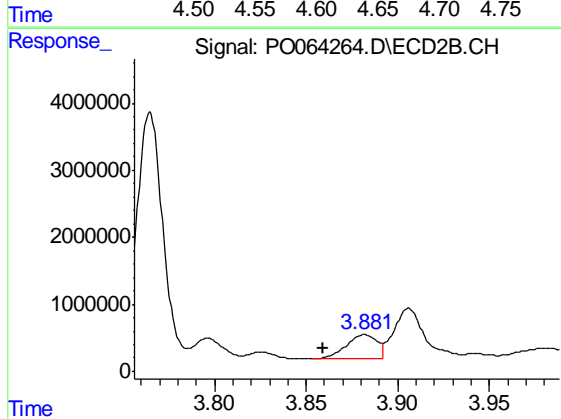
R.T.: 3.765 min  
 Delta R.T.: -0.010 min  
 Response: 36441235  
 Conc: 139293.64 ng/ml



#9 AR-1221-2

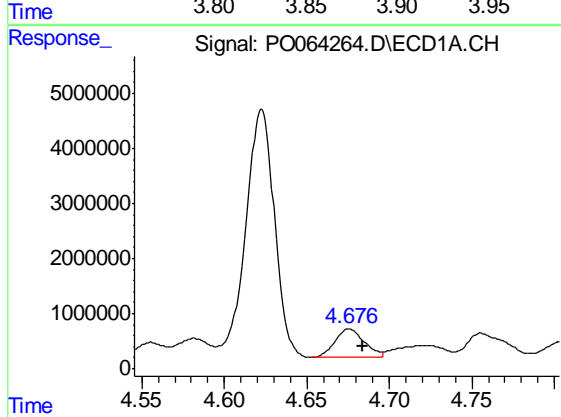
R.T.: 4.623 min  
 Delta R.T.: 0.014 min  
 Response: 54902070  
 Conc: 198570.47 ng/ml

Instrument :  
 ECD\_O  
 ClientSampled :  
 30735



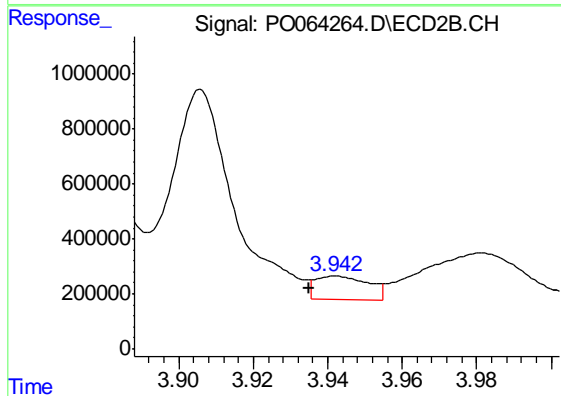
#9 AR-1221-2

R.T.: 3.882 min  
 Delta R.T.: 0.022 min  
 Response: 4202874  
 Conc: 21029.72 ng/ml



#10 AR-1221-3

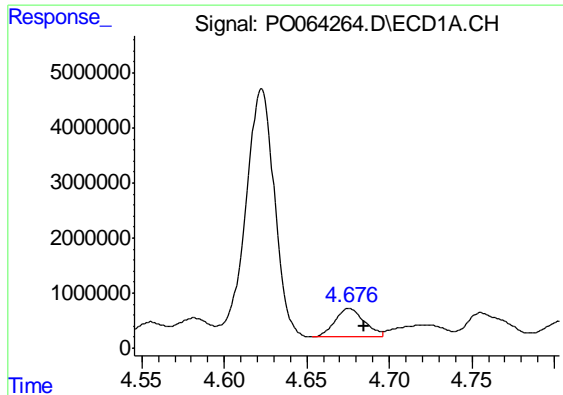
R.T.: 4.676 min  
 Delta R.T.: -0.008 min  
 Response: 6546755  
 Conc: 7796.70 ng/ml



#10 AR-1221-3

R.T.: 3.942 min  
 Delta R.T.: 0.007 min  
 Response: 833699  
 Conc: 1289.28 ng/ml

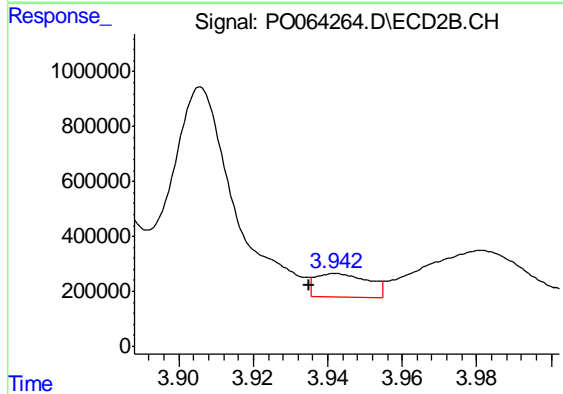




#11 AR-1232-1

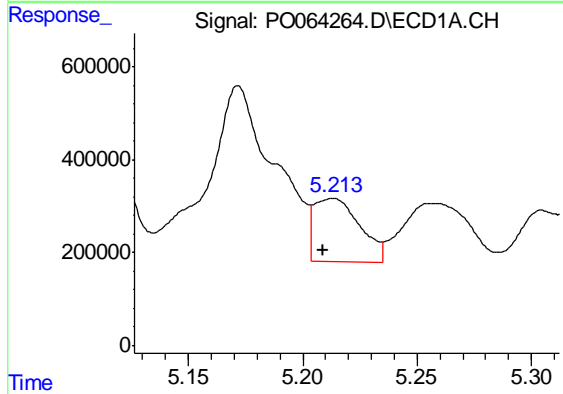
R.T.: 4.676 min  
 Delta R.T.: -0.009 min  
 Response: 6546755  
 Conc: 5106.37 ng/ml

Instrument :  
 ECD\_O  
 ClientSampled :  
 30735



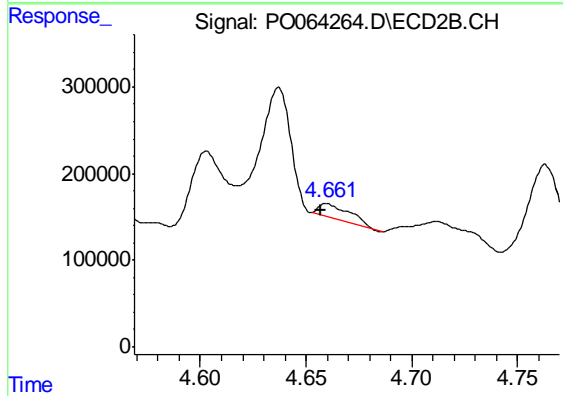
#11 AR-1232-1

R.T.: 3.942 min  
 Delta R.T.: 0.007 min  
 Response: 833699  
 Conc: 823.24 ng/ml



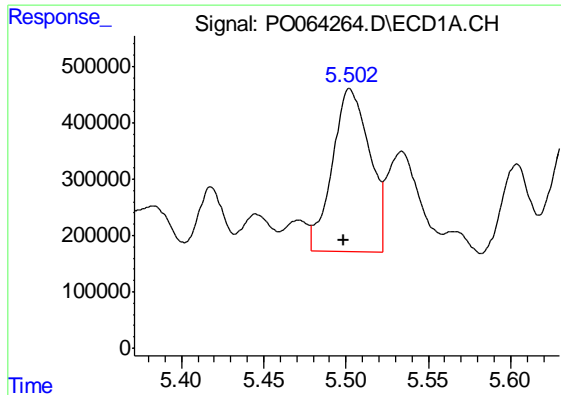
#12 AR-1232-2

R.T.: 5.213 min  
 Delta R.T.: 0.004 min  
 Response: 1876380  
 Conc: 2670.88 ng/ml



#12 AR-1232-2

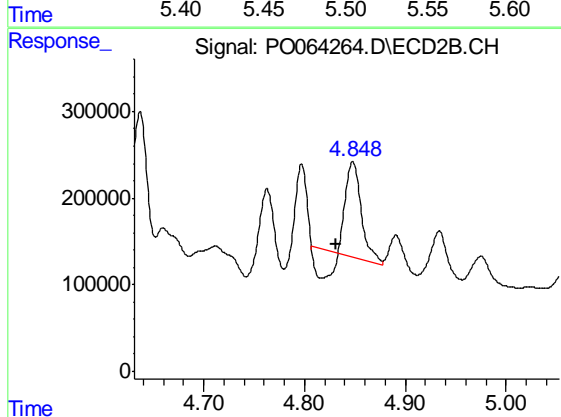
R.T.: 4.660 min  
 Delta R.T.: 0.003 min  
 Response: 163432  
 Conc: 149.91 ng/ml



#13 AR-1232-3

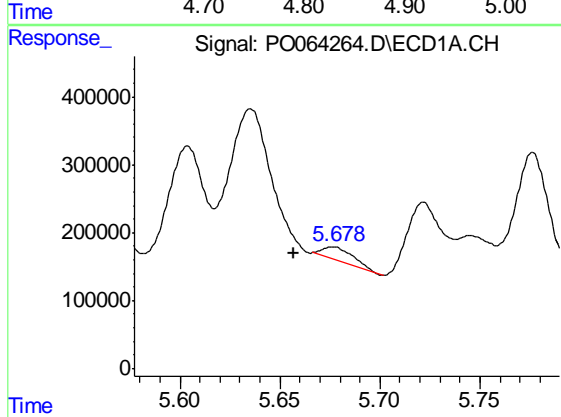
R.T.: 5.502 min  
 Delta R.T.: 0.004 min  
 Response: 4571624  
 Conc: 3301.24 ng/ml

Instrument :  
 ECD\_O  
 ClientSampleId :  
 30735



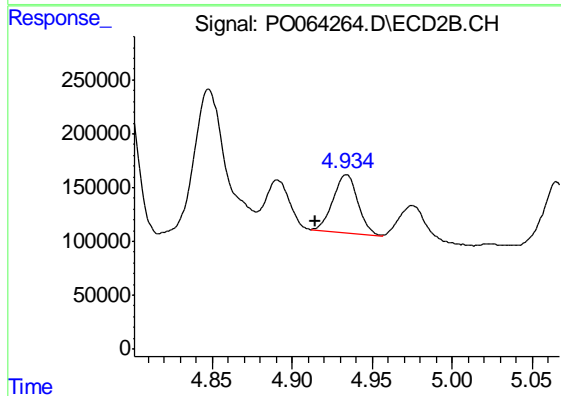
#13 AR-1232-3

R.T.: 4.848 min  
 Delta R.T.: 0.016 min  
 Response: 848804  
 Conc: 1460.04 ng/ml



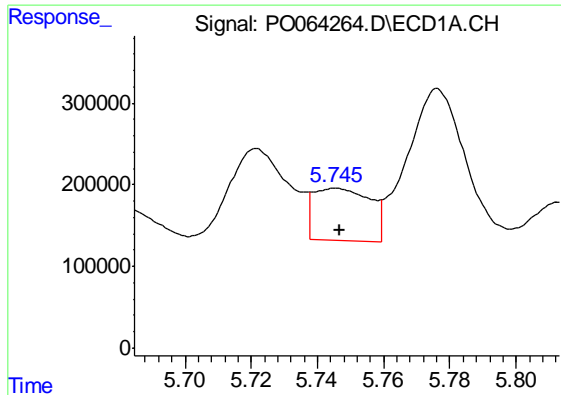
#14 AR-1232-4

R.T.: 5.676 min  
 Delta R.T.: 0.020 min  
 Response: 217506  
 Conc: 305.71 ng/ml



#14 AR-1232-4

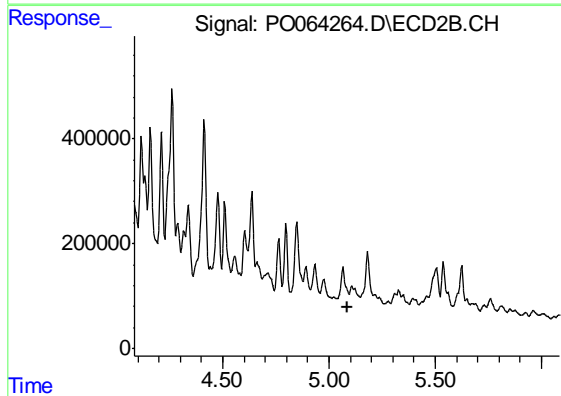
R.T.: 4.934 min  
 Delta R.T.: 0.020 min  
 Response: 580975  
 Conc: 1094.35 ng/ml



#15 AR-1232-5

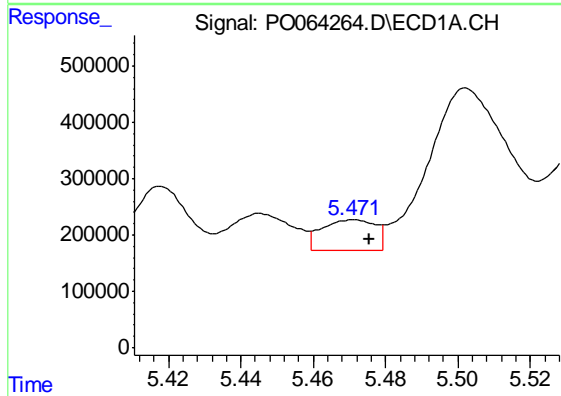
R.T.: 5.745 min  
 Delta R.T.: -0.002 min  
 Response: 758761  
 Conc: 1347.20 ng/ml

Instrument :  
 ECD\_O  
 ClientSampled :  
 30735



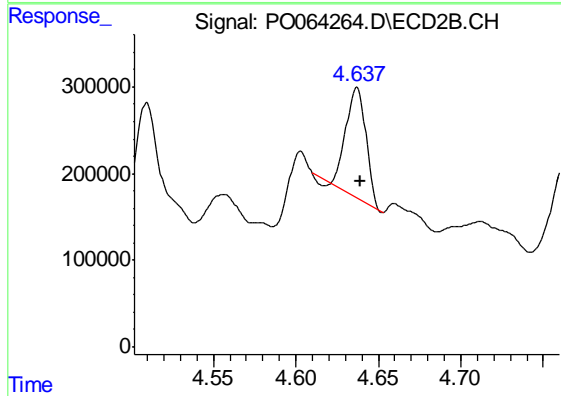
#15 AR-1232-5

R.T.: 5.107 min  
 Delta R.T.: 0.022 min  
 Response: -21754  
 Conc: N.D.



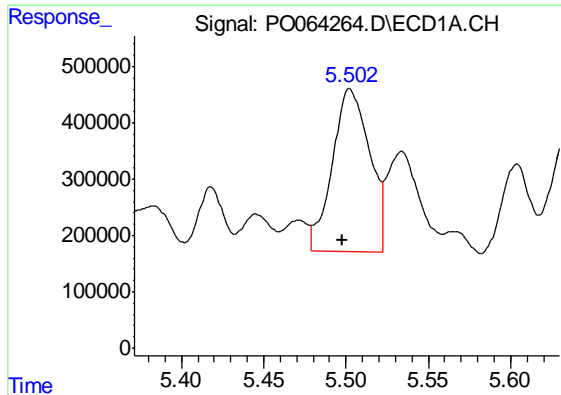
#16 AR-1242-1

R.T.: 5.471 min  
 Delta R.T.: -0.005 min  
 Response: 560934  
 Conc: 589.10 ng/ml



#16 AR-1242-1

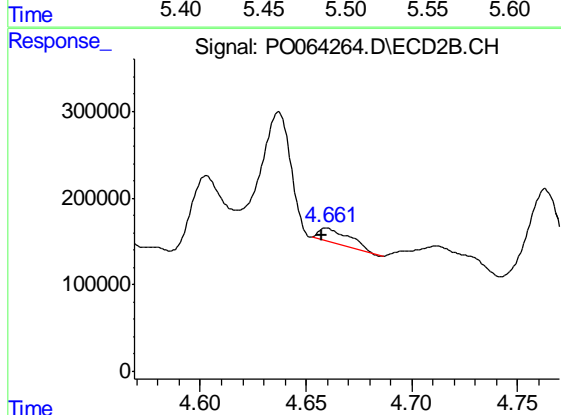
R.T.: 4.637 min  
 Delta R.T.: -0.002 min  
 Response: 1036340  
 Conc: 1353.42 ng/ml



#17 AR-1242-2

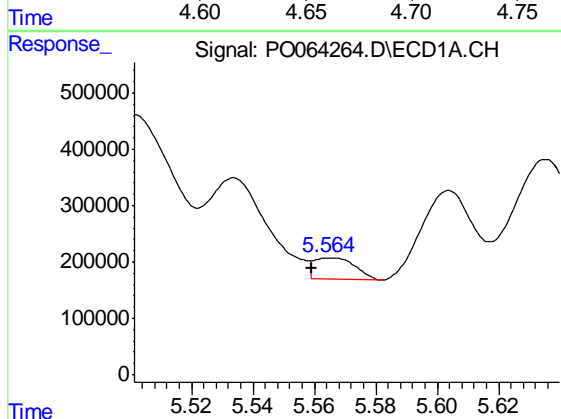
R.T.: 5.502 min  
 Delta R.T.: 0.004 min  
 Response: 4571624  
 Conc: 3384.90 ng/ml

Instrument :  
 ECD\_O  
 ClientSampleId :  
 30735



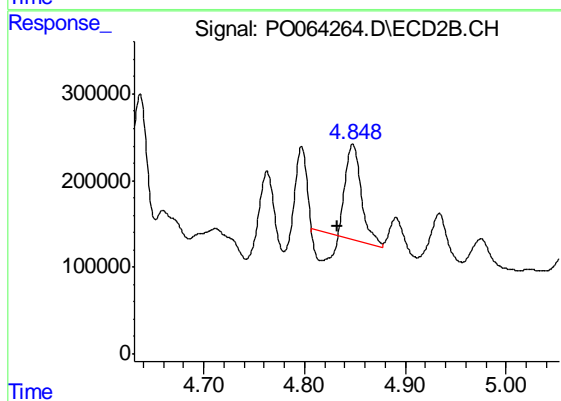
#17 AR-1242-2

R.T.: 4.660 min  
 Delta R.T.: 0.002 min  
 Response: 163432  
 Conc: 158.19 ng/ml



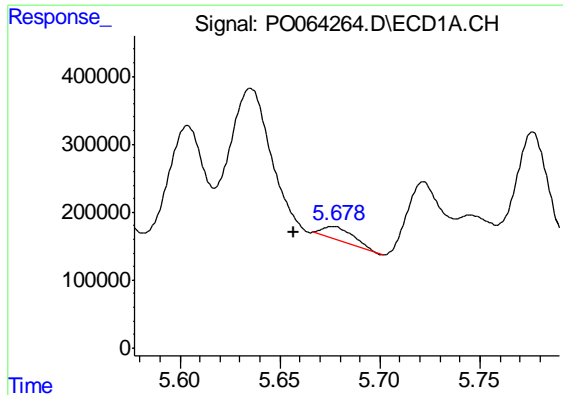
#18 AR-1242-3

R.T.: 5.565 min  
 Delta R.T.: 0.006 min  
 Response: 356733  
 Conc: 415.71 ng/ml



#18 AR-1242-3

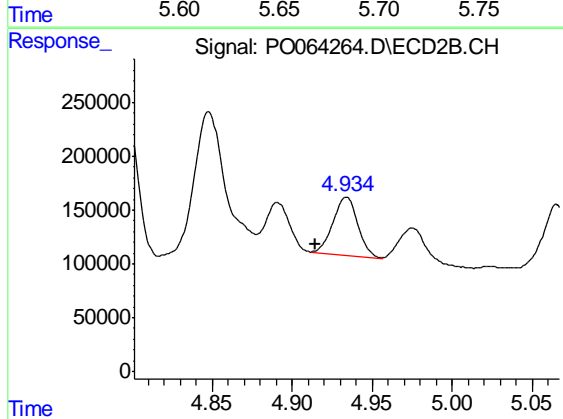
R.T.: 4.848 min  
 Delta R.T.: 0.016 min  
 Response: 848804  
 Conc: 1514.59 ng/ml



#19 AR-1242-4

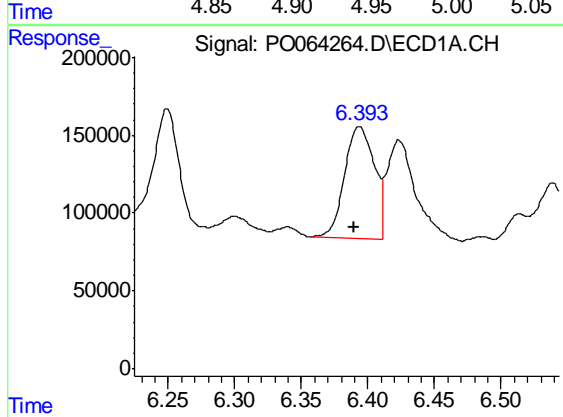
R.T.: 5.676 min  
 Delta R.T.: 0.019 min  
 Response: 217506  
 Conc: 311.07 ng/ml

Instrument :  
 ECD\_O  
 ClientSampled :  
 30735



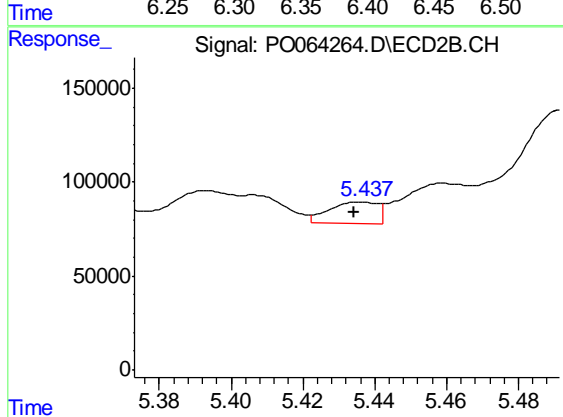
#19 AR-1242-4

R.T.: 4.934 min  
 Delta R.T.: 0.020 min  
 Response: 580975  
 Conc: 1024.33 ng/ml



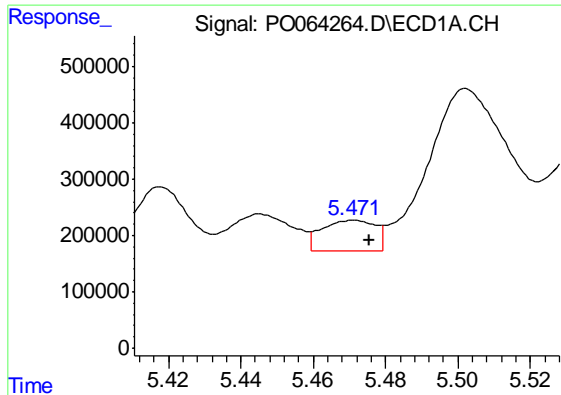
#20 AR-1242-5

R.T.: 6.393 min  
 Delta R.T.: 0.004 min  
 Response: 1121111  
 Conc: 1327.04 ng/ml



#20 AR-1242-5

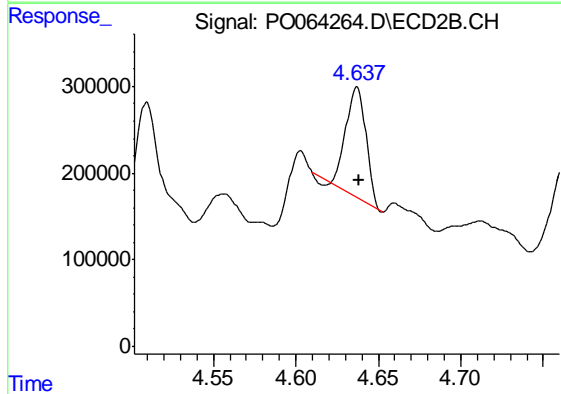
R.T.: 5.437 min  
 Delta R.T.: 0.003 min  
 Response: 105934  
 Conc: 134.98 ng/ml



#21 AR-1248-1

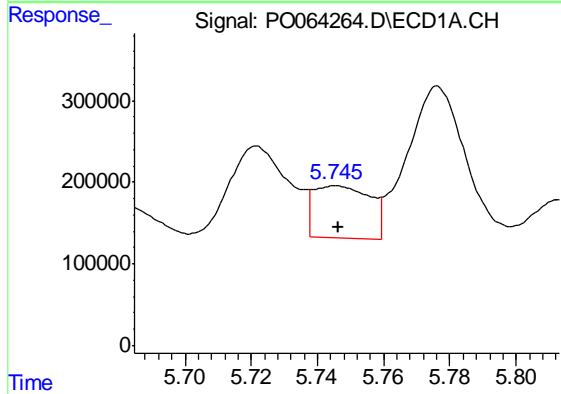
R.T.: 5.471 min  
 Delta R.T.: -0.004 min  
 Response: 560934  
 Conc: 1000.05 ng/ml

Instrument :  
 ECD\_O  
 ClientSampleId :  
 30735



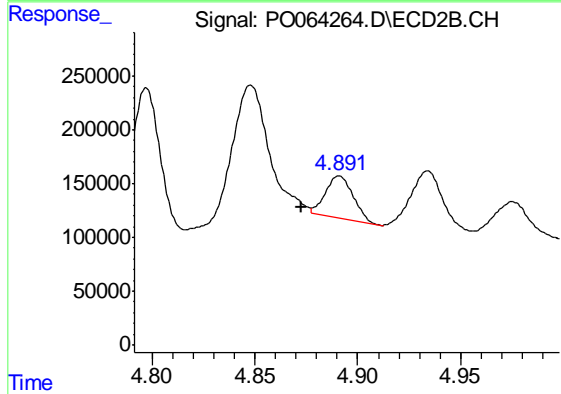
#21 AR-1248-1

R.T.: 4.637 min  
 Delta R.T.: -0.001 min  
 Response: 1036340  
 Conc: 2307.90 ng/ml



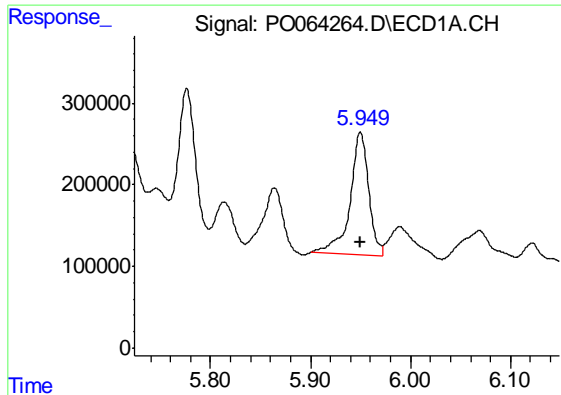
#22 AR-1248-2

R.T.: 5.745 min  
 Delta R.T.: -0.001 min  
 Response: 758761  
 Conc: 915.60 ng/ml



#22 AR-1248-2

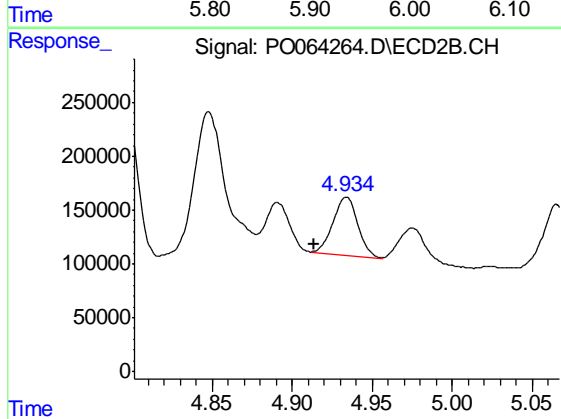
R.T.: 4.891 min  
 Delta R.T.: 0.019 min  
 Response: 370473  
 Conc: 589.18 ng/ml



#23 AR-1248-3

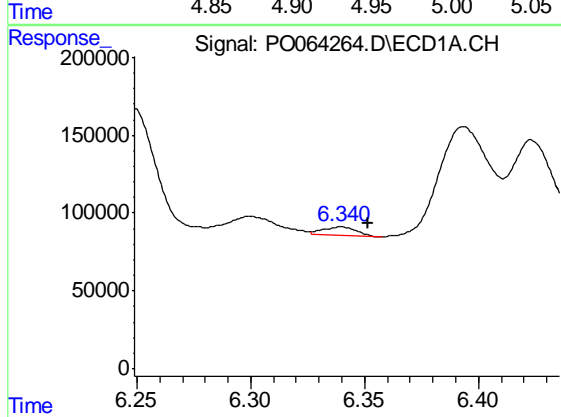
R.T.: 5.950 min  
 Delta R.T.: 0.000 min  
 Response: 1959558  
 Conc: 2130.25 ng/ml

Instrument :  
 ECD\_O  
 ClientSampleId :  
 30735



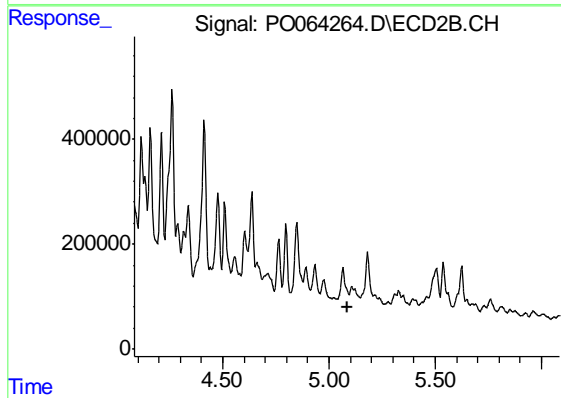
#23 AR-1248-3

R.T.: 4.934 min  
 Delta R.T.: 0.020 min  
 Response: 580975  
 Conc: 900.42 ng/ml



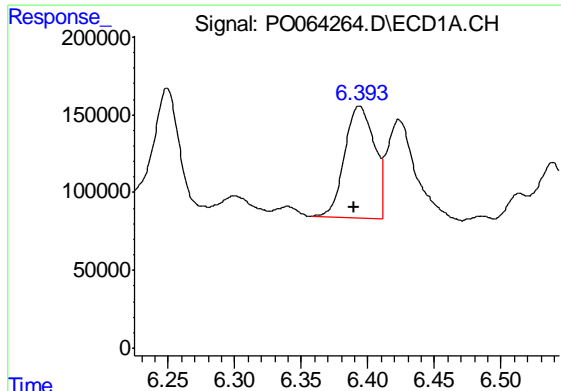
#24 AR-1248-4

R.T.: 6.340 min  
 Delta R.T.: -0.011 min  
 Response: 56408  
 Conc: 50.89 ng/ml



#24 AR-1248-4

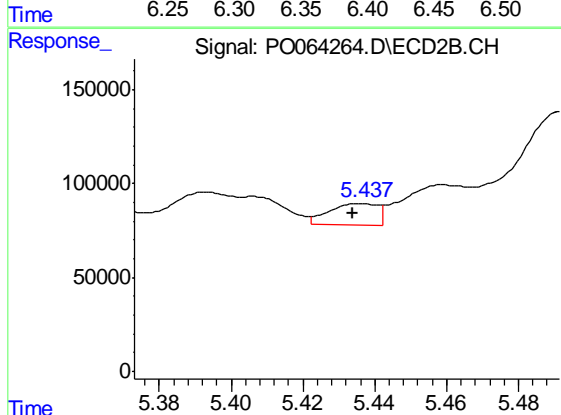
R.T.: 5.107 min  
 Delta R.T.: 0.022 min  
 Response: -21754  
 Conc: N.D.



#25 AR-1248-5

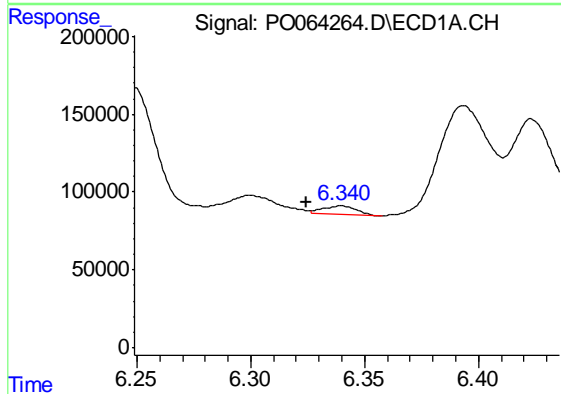
R.T.: 6.393 min  
 Delta R.T.: 0.004 min  
 Response: 1121111  
 Conc: 1044.86 ng/ml

Instrument :  
 ECD\_O  
 ClientSampleId :  
 30735



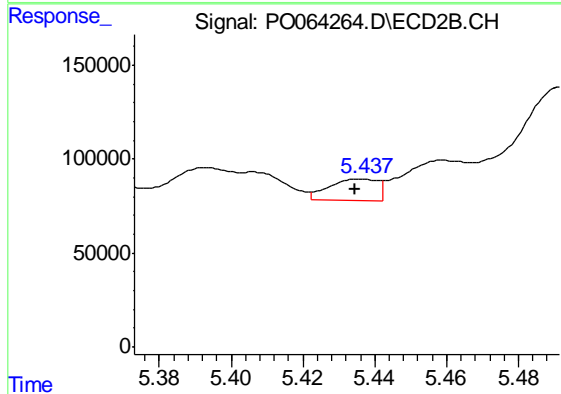
#25 AR-1248-5

R.T.: 5.437 min  
 Delta R.T.: 0.003 min  
 Response: 105934  
 Conc: 87.44 ng/ml



#26 AR-1254-1

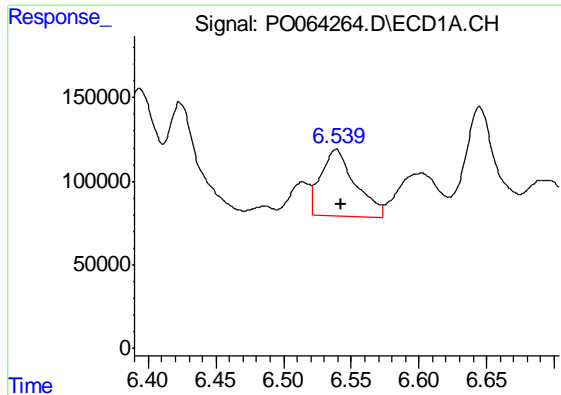
R.T.: 6.340 min  
 Delta R.T.: 0.015 min  
 Response: 56408  
 Conc: 34.56 ng/ml



#26 AR-1254-1

R.T.: 5.437 min  
 Delta R.T.: 0.002 min  
 Response: 105934  
 Conc: 53.90 ng/ml

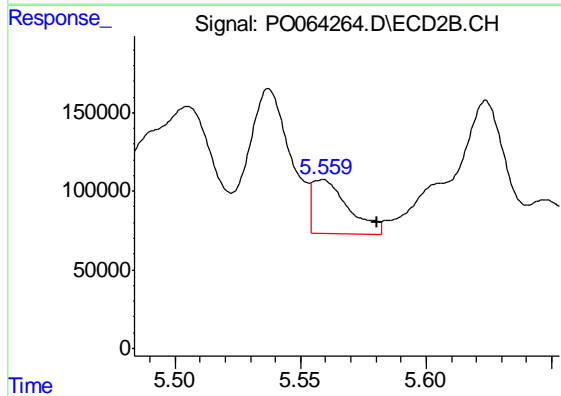




#27 AR-1254-2

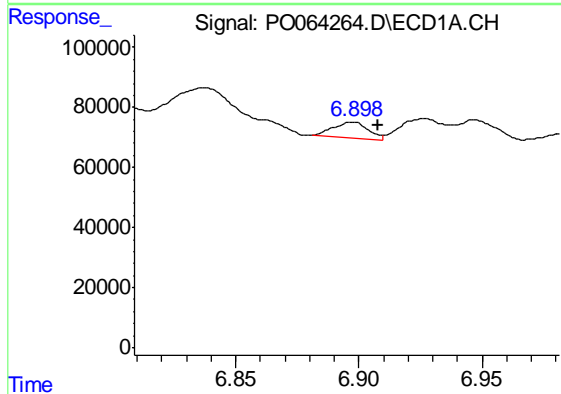
R.T.: 6.539 min  
 Delta R.T.: -0.004 min  
 Response: 705677  
 Conc: 270.70 ng/ml

Instrument :  
 ECD\_O  
 ClientSampleId :  
 30735



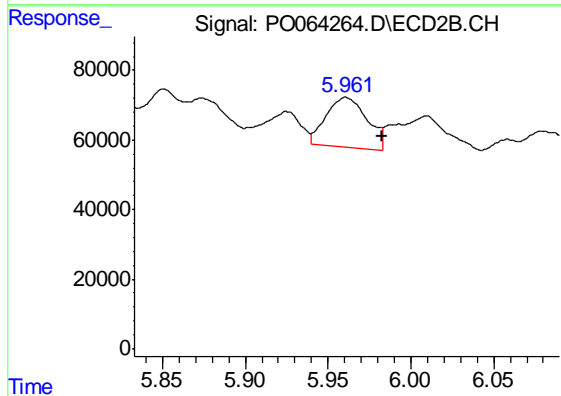
#27 AR-1254-2

R.T.: 5.559 min  
 Delta R.T.: -0.022 min  
 Response: 348328  
 Conc: 194.50 ng/ml



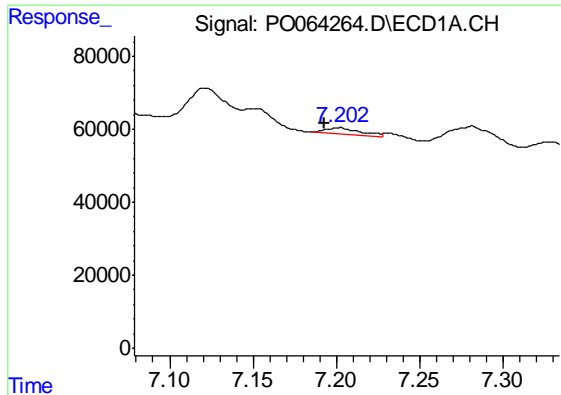
#28 AR-1254-3

R.T.: 6.898 min  
 Delta R.T.: -0.010 min  
 Response: 53009  
 Conc: 18.37 ng/ml



#28 AR-1254-3

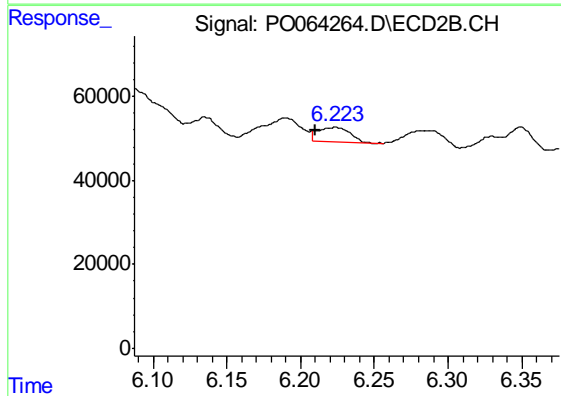
R.T.: 5.961 min  
 Delta R.T.: -0.022 min  
 Response: 246021  
 Conc: 79.49 ng/ml



#29 AR-1254-4

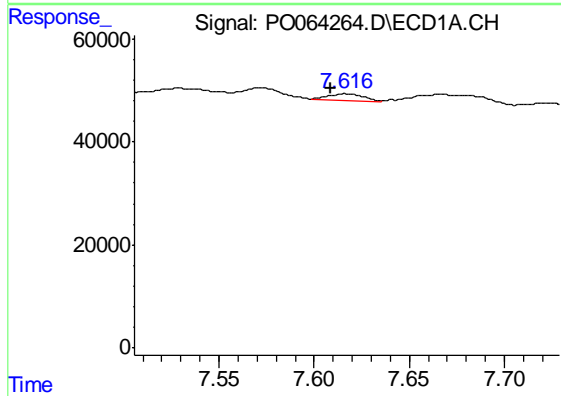
R.T.: 7.202 min  
 Delta R.T.: 0.009 min  
 Response: 27366  
 Conc: 11.95 ng/ml

Instrument :  
 ECD\_O  
 ClientSampleId :  
 30735



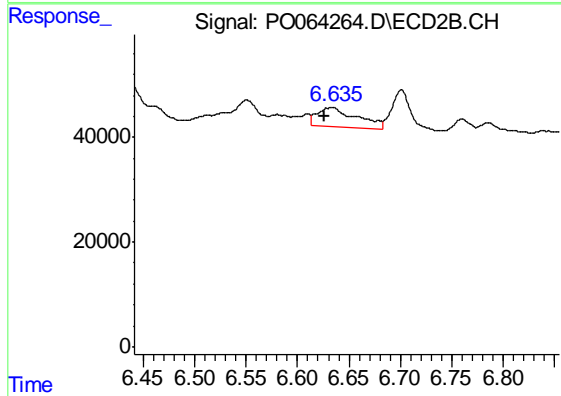
#29 AR-1254-4

R.T.: 6.224 min  
 Delta R.T.: 0.014 min  
 Response: 53325  
 Conc: 25.85 ng/ml



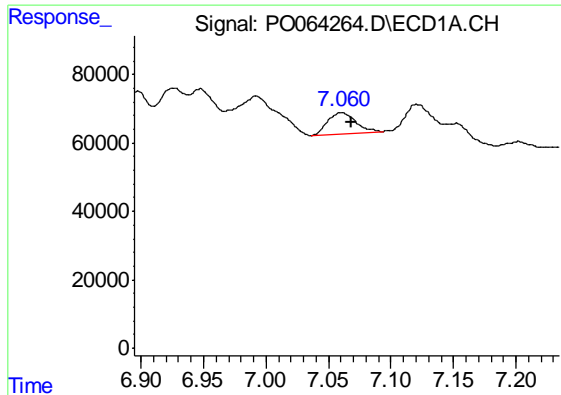
#30 AR-1254-5

R.T.: 7.616 min  
 Delta R.T.: 0.007 min  
 Response: 15064  
 Conc: 5.90 ng/ml



#30 AR-1254-5

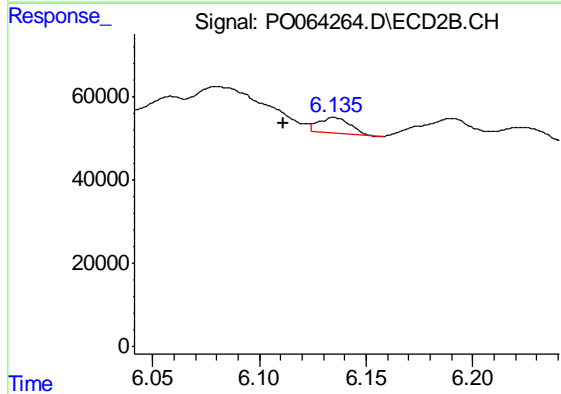
R.T.: 6.634 min  
 Delta R.T.: 0.008 min  
 Response: 98938  
 Conc: 32.80 ng/ml



#31 AR-1260-1

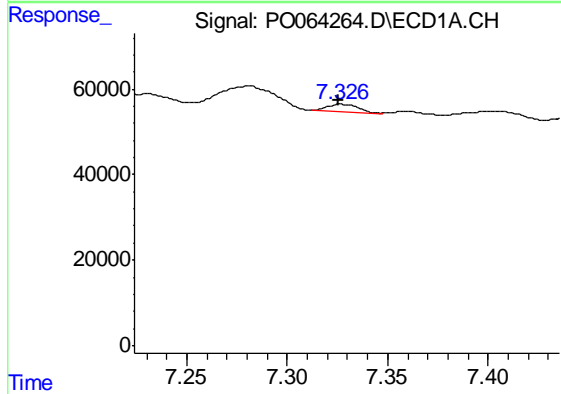
R.T.: 7.061 min  
 Delta R.T.: -0.008 min  
 Response: 94995  
 Conc: 50.34 ng/ml

Instrument :  
 ECD\_O  
 ClientSampleId :  
 30735



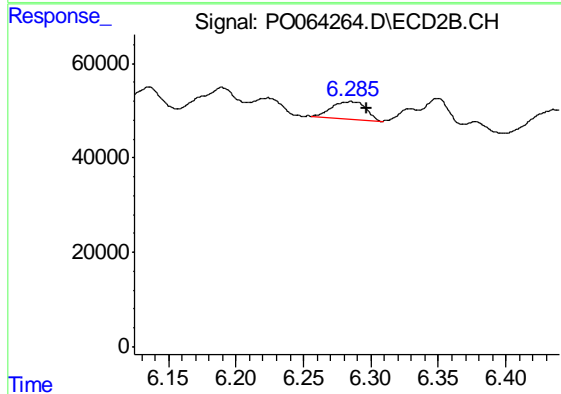
#31 AR-1260-1

R.T.: 6.135 min  
 Delta R.T.: 0.024 min  
 Response: 39482  
 Conc: 22.49 ng/ml



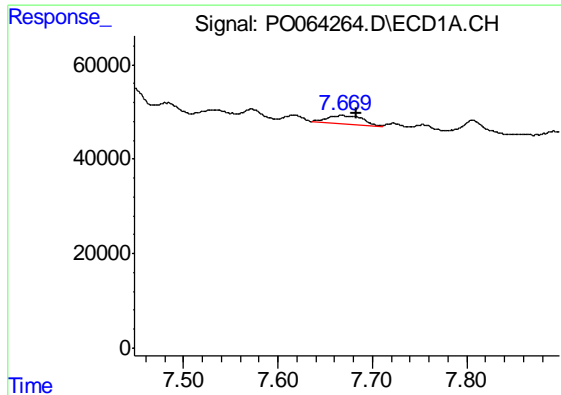
#32 AR-1260-2

R.T.: 7.327 min  
 Delta R.T.: 0.001 min  
 Response: 20053  
 Conc: 8.57 ng/ml



#32 AR-1260-2

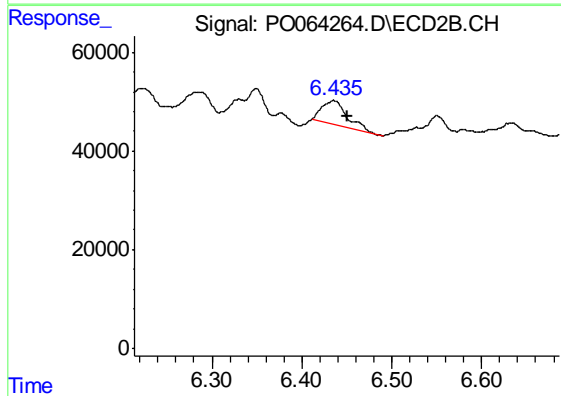
R.T.: 6.285 min  
 Delta R.T.: -0.012 min  
 Response: 67463  
 Conc: 30.32 ng/ml



#33 AR-1260-3

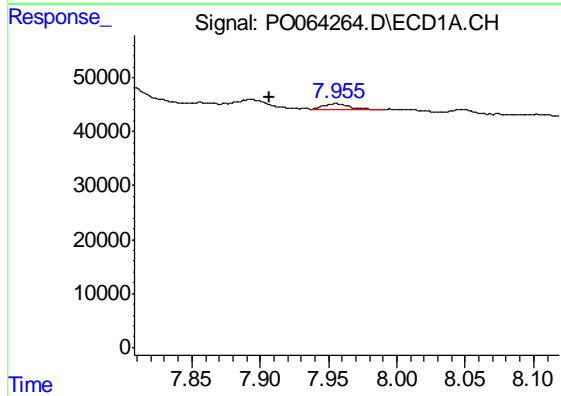
R.T.: 7.668 min  
 Delta R.T.: -0.015 min  
 Response: 47524  
 Conc: 25.67 ng/ml

Instrument :  
 ECD\_O  
 ClientSampleId :  
 30735



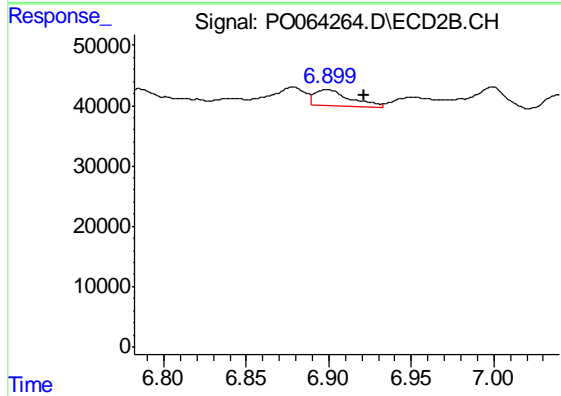
#33 AR-1260-3

R.T.: 6.436 min  
 Delta R.T.: -0.015 min  
 Response: 94517  
 Conc: 46.49 ng/ml



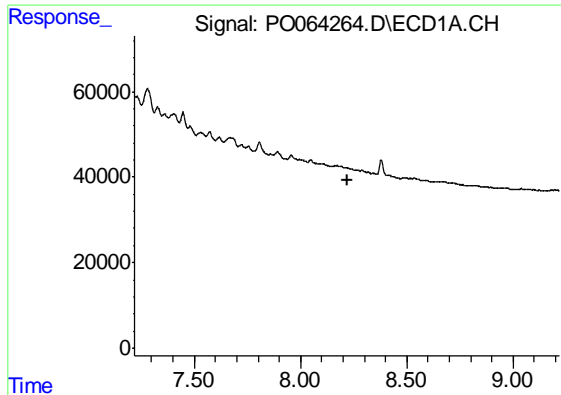
#34 AR-1260-4

R.T.: 7.956 min  
 Delta R.T.: 0.048 min  
 Response: 14091  
 Conc: 6.43 ng/ml



#34 AR-1260-4

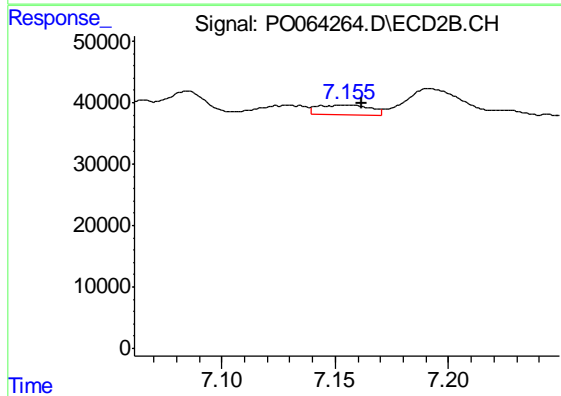
R.T.: 6.899 min  
 Delta R.T.: -0.022 min  
 Response: 40691  
 Conc: 21.94 ng/ml



#35 AR-1260-5

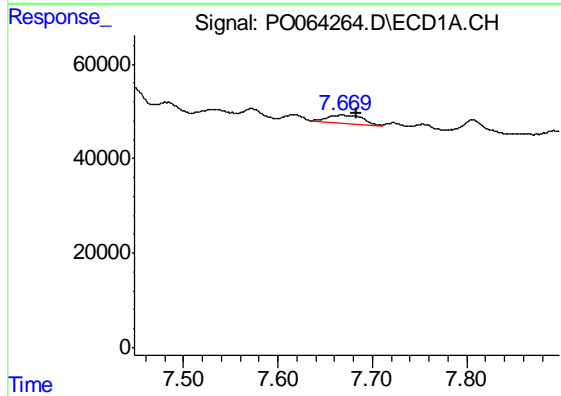
R.T.: 0.000 min  
 Exp R.T. : 8.219 min  
 Response: 0  
 Conc: N.D.

Instrument :  
 ECD\_O  
 ClientSampled :  
 30735



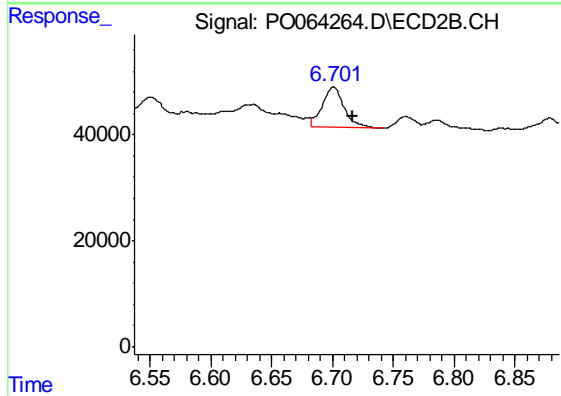
#35 AR-1260-5

R.T.: 7.155 min  
 Delta R.T.: -0.006 min  
 Response: 26326  
 Conc: 5.44 ng/ml



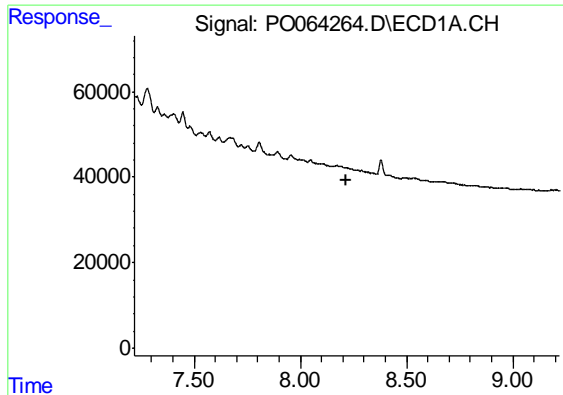
#36 AR-1262-1

R.T.: 7.668 min  
 Delta R.T.: -0.016 min  
 Response: 47524  
 Conc: 15.92 ng/ml



#36 AR-1262-1

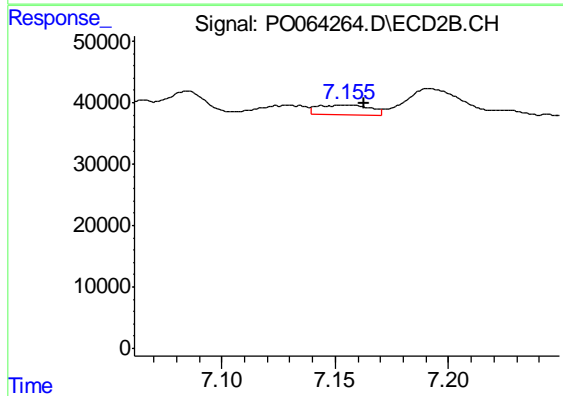
R.T.: 6.701 min  
 Delta R.T.: -0.015 min  
 Response: 93657  
 Conc: 74.54 ng/ml



#37 AR-1262-2

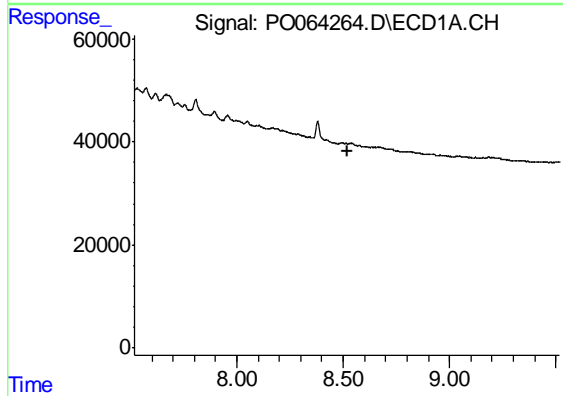
R.T.: 0.000 min  
 Exp R.T. : 8.219 min  
 Response: 0  
 Conc: N.D.

Instrument :  
 ECD\_O  
 ClientSampled :  
 30735



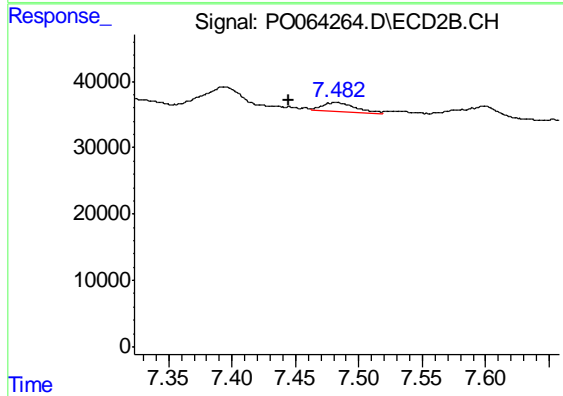
#37 AR-1262-2

R.T.: 7.155 min  
 Delta R.T.: -0.007 min  
 Response: 26326  
 Conc: 4.41 ng/ml



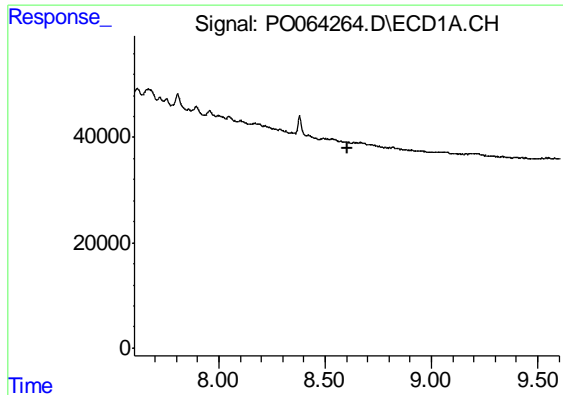
#38 AR-1262-3

R.T.: 0.000 min  
 Exp R.T. : 8.518 min  
 Response: 0  
 Conc: N.D.



#38 AR-1262-3

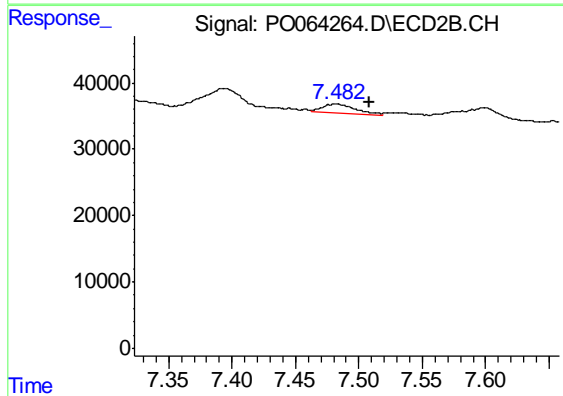
R.T.: 7.482 min  
 Delta R.T.: 0.037 min  
 Response: 25436  
 Conc: 10.91 ng/ml



#39 AR-1262-4

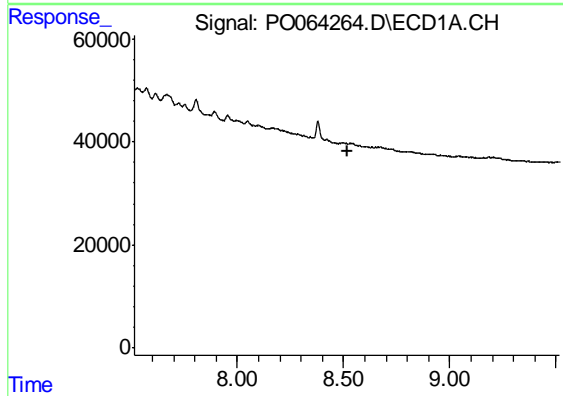
R.T.: 0.000 min  
 Exp R.T. : 8.603 min  
 Response: 0  
 Conc: N.D.

Instrument :  
 ECD\_O  
 ClientSampled :  
 30735



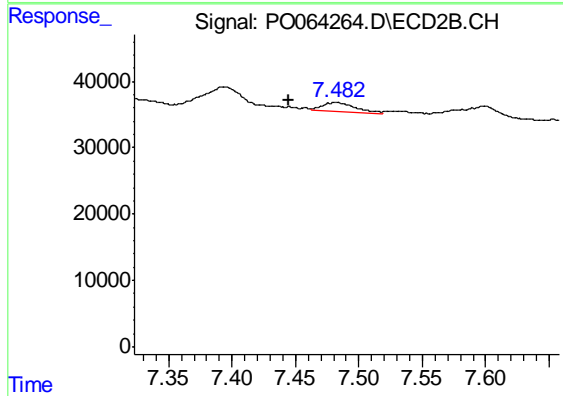
#39 AR-1262-4

R.T.: 7.482 min  
 Delta R.T.: -0.027 min  
 Response: 25436  
 Conc: 5.71 ng/ml



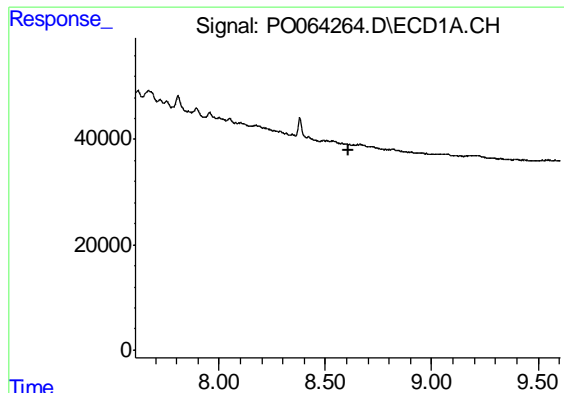
#41 AR-1268-1

R.T.: 0.000 min  
 Exp R.T. : 8.516 min  
 Response: 0  
 Conc: N.D.



#41 AR-1268-1

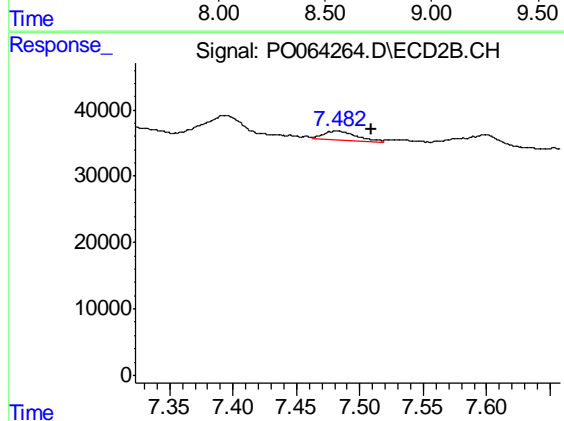
R.T.: 7.482 min  
 Delta R.T.: 0.037 min  
 Response: 25436  
 Conc: 3.64 ng/ml



#42 AR-1268-2

R.T.: 0.000 min  
Exp R.T. : 8.606 min  
Response: 0  
Conc: N.D.

Instrument :  
ECD\_O  
ClientSampleId :  
30735



#42 AR-1268-2

R.T.: 7.482 min  
Delta R.T.: -0.027 min  
Response: 25436  
Conc: 3.97 ng/ml