

Data Path : Z:\pestpcbsrv\HPCHEM1\ECD_0\Data\PO120219\
 Data File : P0064272.D
 Signal(s) : Signal #1: ECD1A.CH Signal #2: ECD2B.CH
 Acq On : 02 Dec 2019 19:38
 Operator : SM/AJ
 Sample : K6090-03MSD
 Misc :
 ALS Vial : 29 Sample Multiplier: 1

Instrument :
 ECD_O
 ClientSampleId :
 TP-20-SMS

Integration File signal 1: autoint1.e
 Integration File signal 2: autoint2.e
 Quant Time: Dec 03 01:38:30 2019
 Quant Method : Z:\pestpcbsrv\HPCHEM1\ECD_0\methods\PO112719.M
 Quant Title : GC EXTRACTABLES
 QLast Update : Thu Nov 28 01:28:08 2019
 Response via : Initial Calibration
 Integrator: ChemStation 6890 Scale Mode: Small noise peaks clipped

Volume Inj. : 2 µl
 Signal #1 Phase : ZB-MR1 Signal #2 Phase: ZB-MR2
 Signal #1 Info : 30Mx0.32mmx 0.50µ Signal #2 Info : 30M x 0.32mm x 0.25µm

Compound	RT#1	RT#2	Resp#1	Resp#2	ng/ml	ng/ml

System Monitoring Compounds						
1) SA Tetrachlo...	4.311	3.559	619820	505137	20.929	21.238
2) SA Decachlor...	9.940	8.524	803717	788952	19.611	19.313
Target Compounds						
3) L1 AR-1016-1	5.473	4.636	320040	262616	246.537	250.825
4) L1 AR-1016-2	5.495	4.655	455929	354388	250.083	251.221
5) L1 AR-1016-3	5.556	4.829	285120	187128	248.419	242.953
6) L1 AR-1016-4	5.654	4.870	230498	160905	245.100	247.348
7) L1 AR-1016-5	5.946	5.081	244522	199886	251.278	240.098
8) L2 AR-1221-1	4.515	3.770	24523	22596	69.028	86.372 #
9) L2 AR-1221-2	4.606	3.857	39891	30998	144.276	155.103
10) L2 AR-1221-3	4.682	3.932	147187	110176	175.288	170.383
11) L3 AR-1232-1	4.682	3.932	147187	110176	114.803	108.794
12) L3 AR-1232-2	5.207	4.655	207065	354388	294.742	325.067
13) L3 AR-1232-3	5.495	4.829	455929	187128	329.233	321.881
14) L3 AR-1232-4	5.654	4.911	230498	195217	323.969	367.721
15) L3 AR-1232-5	5.744	5.081	219512	199886	389.749	341.383
16) L4 AR-1242-1	5.473	4.636	320040	262616	336.108	342.966
17) L4 AR-1242-2	5.495	4.655	455929	354388	337.576	343.010
18) L4 AR-1242-3	5.556	4.829	285120	187128	332.261	333.907
19) L4 AR-1242-4	5.654	4.911	230498	195217	329.655	344.192
20) L4 AR-1242-5	6.388	5.431	47906	164647	56.706	209.795 #
21) L5 AR-1248-1	5.473	4.636	320040	262616	570.579	584.839
22) L5 AR-1248-2	5.744	4.870	219512	160905	264.887	255.895
23) L5 AR-1248-3	5.946	4.911	244522	195217	265.822	302.556
24) L5 AR-1248-4	6.349	5.081	52428	199886	47.301	253.579 #
25) L5 AR-1248-5	6.388	5.431	47906	164647	44.648	135.896 #
26) L6 AR-1254-1	6.321	5.431	180471	164647	110.574	83.774
27) L6 AR-1254-2	6.538	5.577	190342	160826	73.016	89.802
28) L6 AR-1254-3	6.905	5.994	111600	318715	38.666	102.983 #
29) L6 AR-1254-4	7.189	6.207	75365	55299	32.908	26.802
30) L6 AR-1254-5	7.606	6.622	614995	631158	240.679	209.256
31) L7 AR-1260-1	7.067	6.108	423781	455223	224.558	259.354
32) L7 AR-1260-2	7.325	6.295	510636	564903	218.342	253.914
33) L7 AR-1260-3	7.682	6.449	414758	510400	224.036	251.030
34) L7 AR-1260-4	7.906	6.919	529090	445339	241.419	240.106
35) L7 AR-1260-5	8.217	7.159	1012008	1067899	229.222	220.576
36) L8 AR-1262-1	7.682	6.713	414758	249401	138.918	198.484 #
37) L8 AR-1262-2	8.217	7.159	1012008	1067899	183.543	179.018
38) L8 AR-1262-3	8.530	7.442	636186	249417	164.421	106.989 #
39) L8 AR-1262-4	8.585	7.506	390158	845412	133.466	189.848 #
40) L8 AR-1262-5	9.230	7.999	289841	290770	138.093	137.673
41) L9 AR-1268-1	8.530	7.442	636186	249417	97.576	35.724 #
42) L9 AR-1268-2	8.585	7.506	390158	845412	64.579	132.043 #

Data Path : Z:\pestpcbsrv\HPCHEM1\ECD_0\Data\P0120219\
 Data File : P0064272.D
 Signal(s) : Signal #1: ECD1A.CH Signal #2: ECD2B.CH
 Acq On : 02 Dec 2019 19:38
 Operator : SM/AJ
 Sample : K6090-03MSD
 Misc :
 ALS Vial : 29 Sample Multiplier: 1

Instrument :
 ECD_0
 ClientSampleId :
 TP-20-SMS

Integration File signal 1: autoint1.e
 Integration File signal 2: autoint2.e
 Quant Time: Dec 03 01:38:30 2019
 Quant Method : Z:\pestpcbsrv\HPCHEM1\ECD_0\methods\P0112719.M
 Quant Title : GC EXTRACTABLES
 QLast Update : Thu Nov 28 01:28:08 2019
 Response via : Initial Calibration
 Integrator: ChemStation 6890 Scale Mode: Small noise peaks clipped

Volume Inj. : 2 µl
 Signal #1 Phase : ZB-MR1 Signal #2 Phase: ZB-MR2
 Signal #1 Info : 30Mx0.32mmx 0.50µ Signal #2 Info : 30M x 0.32mm x 0.25µm

	Compound	RT#1	RT#2	Resp#1	Resp#2	ng/ml	ng/ml
43)	L9 AR-1268-3	0.000	7.713	0	16302	N.D.	3.113 #
44)	L9 AR-1268-4	9.230	7.999	289841	290770	123.881	124.463
45)	L9 AR-1268-5	9.622	8.279	74626	74610	4.858	4.517

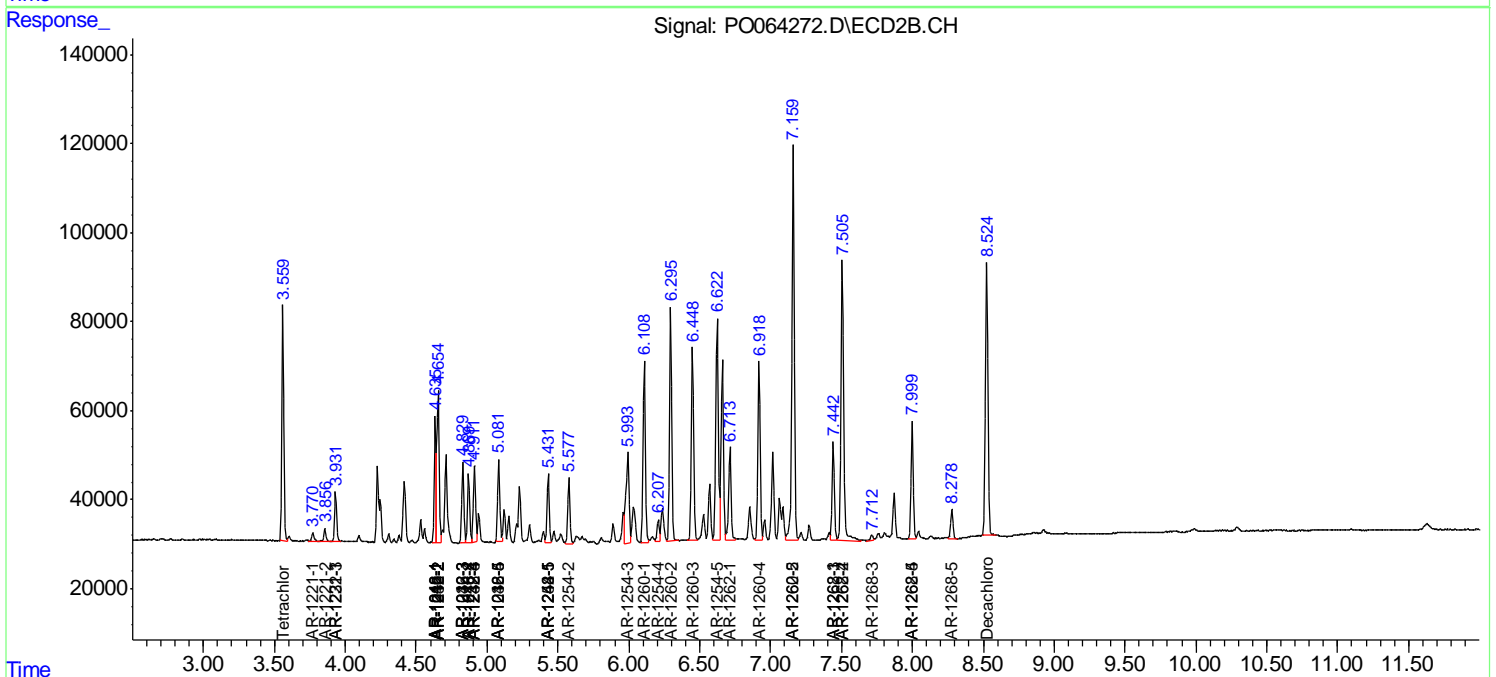
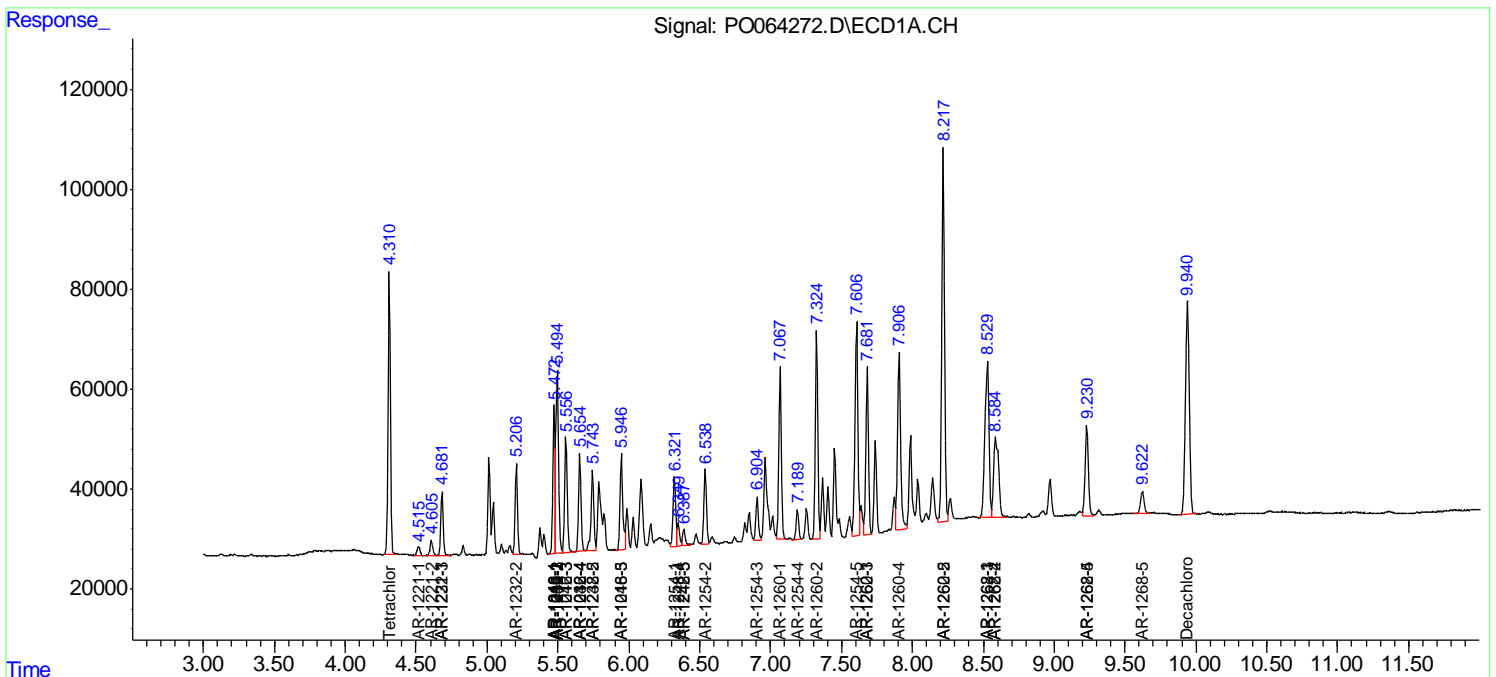
(f)=RT Delta > 1/2 Window (#)=Amounts differ by > 25% (m)=manual int.

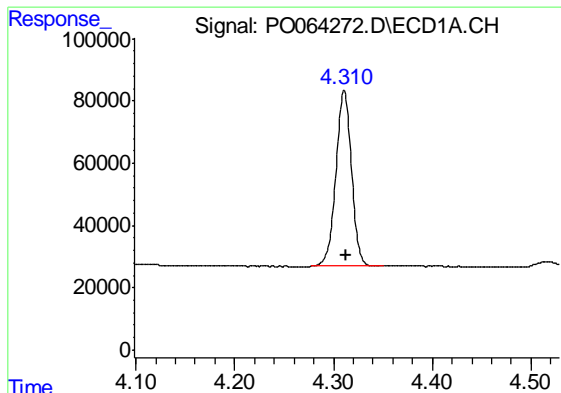
Data Path : Z:\pestpcbsrv\HPCHEM1\ECD_O\Data\PO120219\
 Data File : PO064272.D
 Signal(s) : Signal #1: ECD1A.CH Signal #2: ECD2B.CH
 Acq On : 02 Dec 2019 19:38
 Operator : SM/AJ
 Sample : K6090-03MSD
 Misc :
 ALS Vial : 29 Sample Multiplier: 1

Instrument :
 ECD_O
 ClientSampled :
 TP-20-SMS

Integration File signal 1: autoint1.e
 Integration File signal 2: autoint2.e
 Quant Time: Dec 03 01:38:30 2019
 Quant Method : Z:\pestpcbsrv\HPCHEM1\ECD_O\methods\PO112719.M
 Quant Title : GC EXTRACTABLES
 QLast Update : Thu Nov 28 01:28:08 2019
 Response via : Initial Calibration
 Integrator: ChemStation 6890 Scale Mode: Small noise peaks clipped

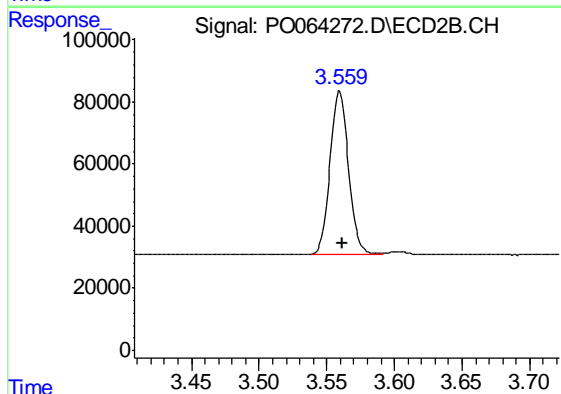
Volume Inj. : 2 µl
 Signal #1 Phase : ZB-MR1 Signal #2 Phase: ZB-MR2
 Signal #1 Info : 30Mx0.32mmx 0.50µ Signal #2 Info : 30M x 0.32mm x 0.25µm



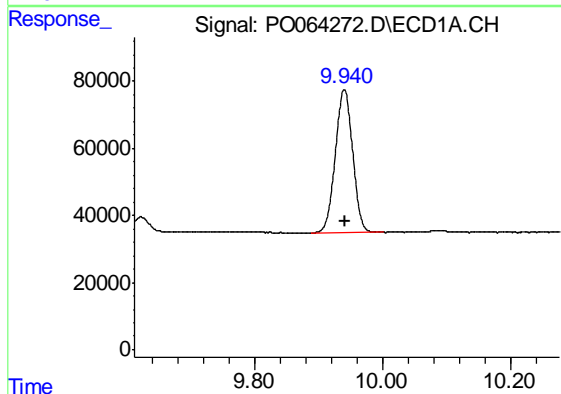


#1 Tetrachloro-m-xylene
 R.T.: 4.311 min
 Delta R.T.: -0.002 min
 Response: 619820
 Conc: 20.93 ng/ml

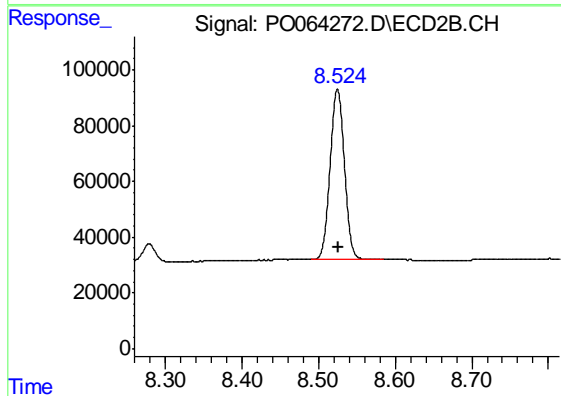
Instrument :
 ECD_O
 ClientSampleId :
 TP-20-SMS



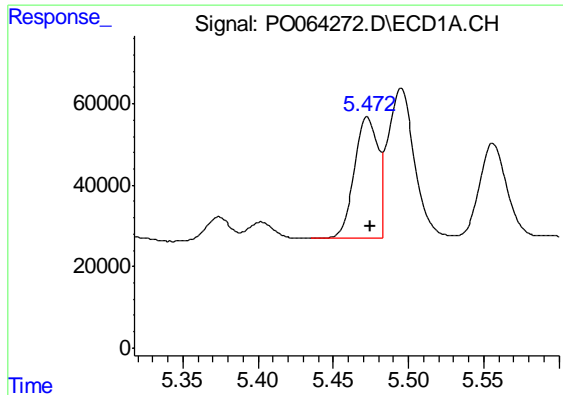
#1 Tetrachloro-m-xylene
 R.T.: 3.559 min
 Delta R.T.: -0.002 min
 Response: 505137
 Conc: 21.24 ng/ml



#2 Decachlorobiphenyl
 R.T.: 9.940 min
 Delta R.T.: 0.000 min
 Response: 803717
 Conc: 19.61 ng/ml



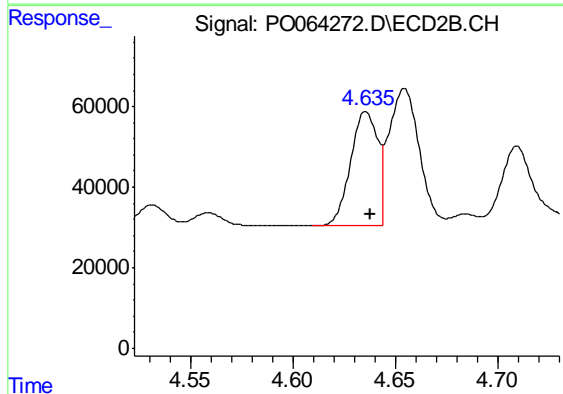
#2 Decachlorobiphenyl
 R.T.: 8.524 min
 Delta R.T.: -0.002 min
 Response: 788952
 Conc: 19.31 ng/ml



#3 AR-1016-1

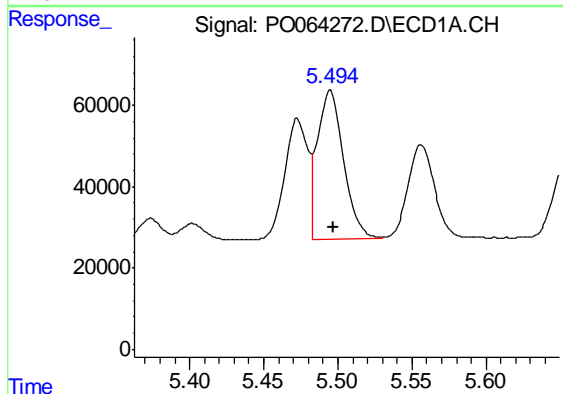
R.T.: 5.473 min
 Delta R.T.: -0.002 min
 Response: 320040
 Conc: 246.54 ng/ml

Instrument :
 ECD_O
 ClientSampleId :
 TP-20-SMS



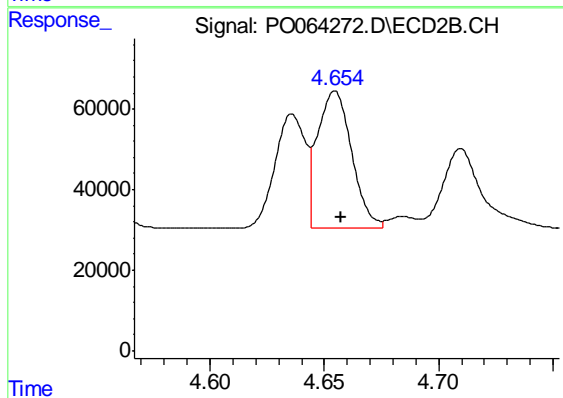
#3 AR-1016-1

R.T.: 4.636 min
 Delta R.T.: -0.003 min
 Response: 262616
 Conc: 250.82 ng/ml



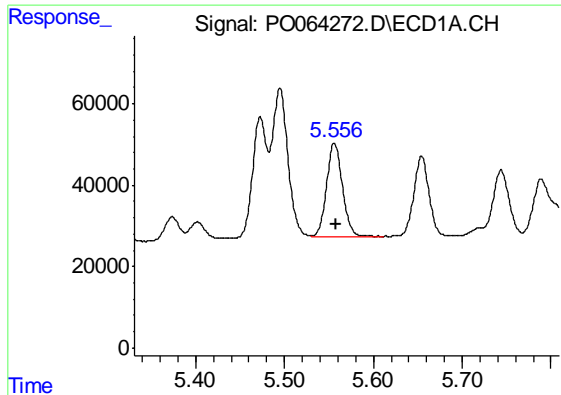
#4 AR-1016-2

R.T.: 5.495 min
 Delta R.T.: -0.002 min
 Response: 455929
 Conc: 250.08 ng/ml



#4 AR-1016-2

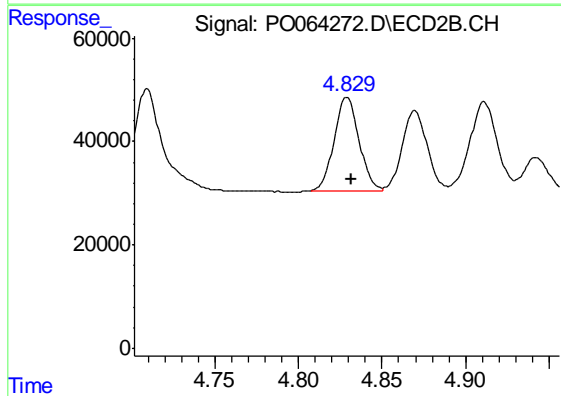
R.T.: 4.655 min
 Delta R.T.: -0.002 min
 Response: 354388
 Conc: 251.22 ng/ml



#5 AR-1016-3

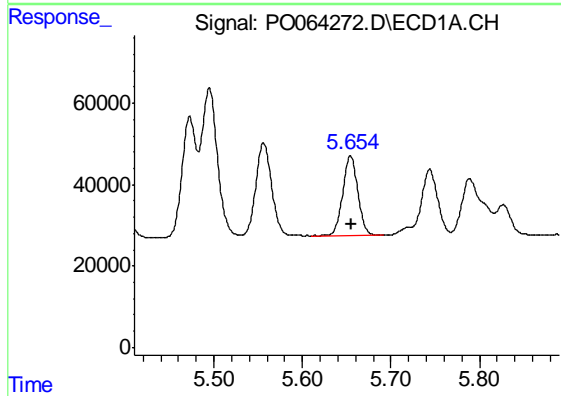
R.T.: 5.556 min
 Delta R.T.: -0.002 min
 Response: 285120
 Conc: 248.42 ng/ml

Instrument :
 ECD_O
 ClientSampleId :
 TP-20-SMS



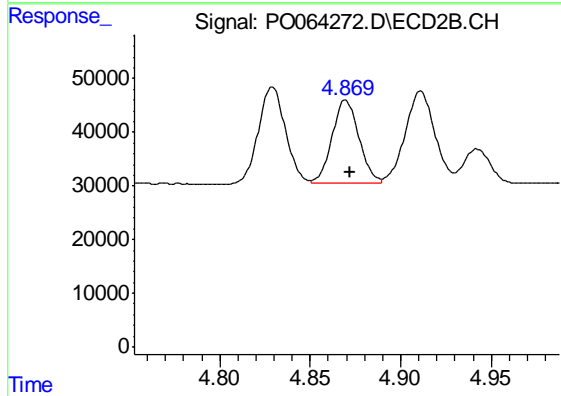
#5 AR-1016-3

R.T.: 4.829 min
 Delta R.T.: -0.003 min
 Response: 187128
 Conc: 242.95 ng/ml



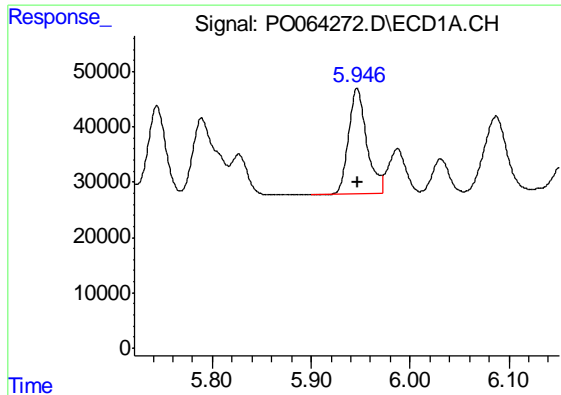
#6 AR-1016-4

R.T.: 5.654 min
 Delta R.T.: -0.002 min
 Response: 230498
 Conc: 245.10 ng/ml



#6 AR-1016-4

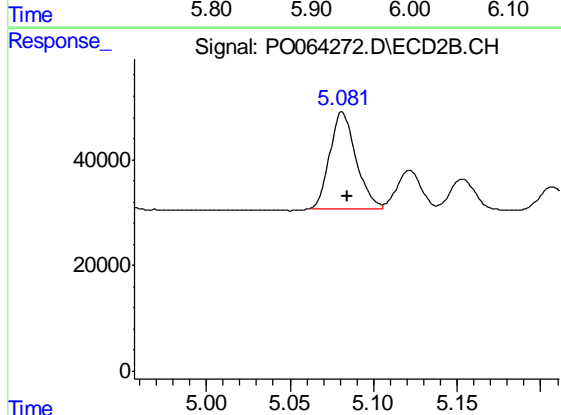
R.T.: 4.870 min
 Delta R.T.: -0.003 min
 Response: 160905
 Conc: 247.35 ng/ml



#7 AR-1016-5

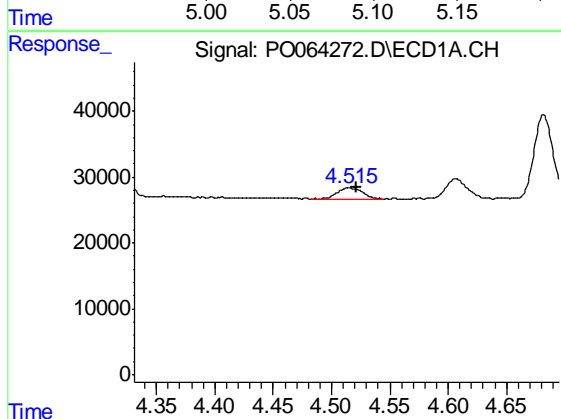
R.T.: 5.946 min
 Delta R.T.: -0.001 min
 Response: 244522
 Conc: 251.28 ng/ml

Instrument :
 ECD_O
 ClientSampleId :
 TP-20-SMS



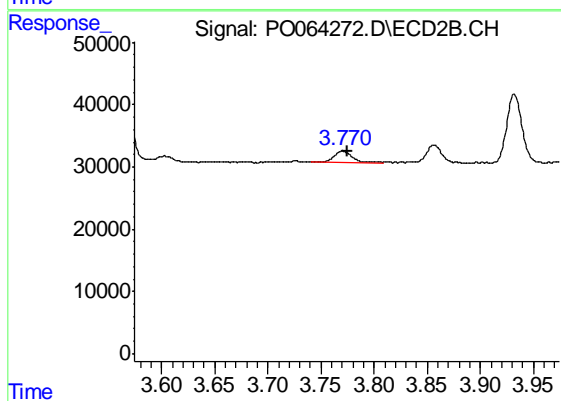
#7 AR-1016-5

R.T.: 5.081 min
 Delta R.T.: -0.003 min
 Response: 199886
 Conc: 240.10 ng/ml



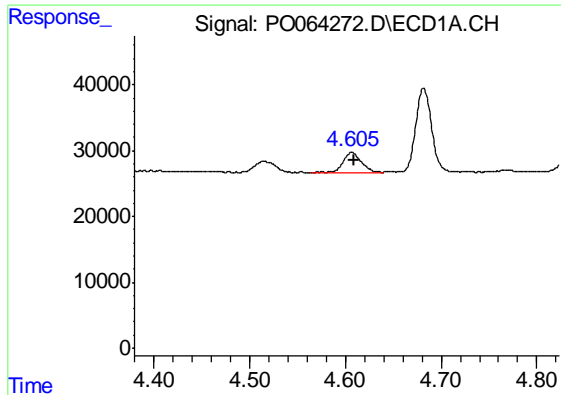
#8 AR-1221-1

R.T.: 4.515 min
 Delta R.T.: -0.006 min
 Response: 24523
 Conc: 69.03 ng/ml



#8 AR-1221-1

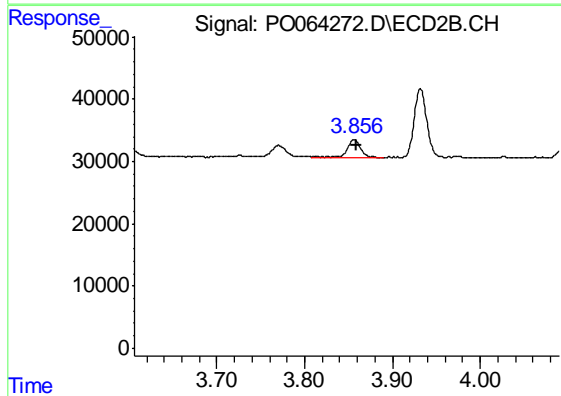
R.T.: 3.770 min
 Delta R.T.: -0.004 min
 Response: 22596
 Conc: 86.37 ng/ml



#9 AR-1221-2

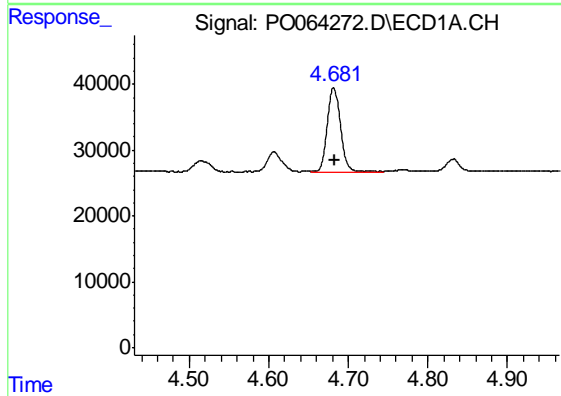
R.T.: 4.606 min
 Delta R.T.: -0.002 min
 Response: 39891
 Conc: 144.28 ng/ml

Instrument :
 ECD_O
 ClientSampled :
 TP-20-SMS



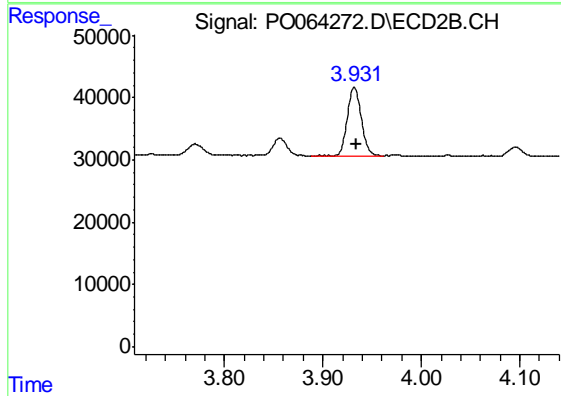
#9 AR-1221-2

R.T.: 3.857 min
 Delta R.T.: -0.003 min
 Response: 30998
 Conc: 155.10 ng/ml



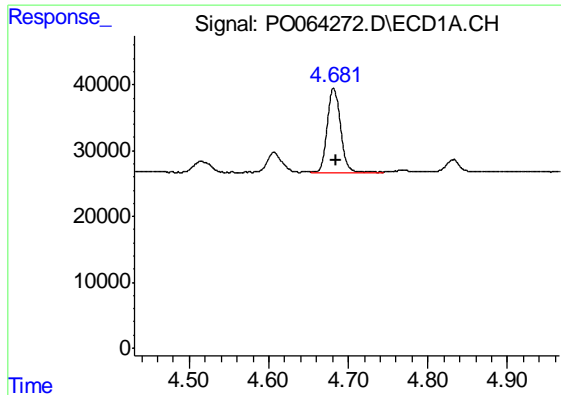
#10 AR-1221-3

R.T.: 4.682 min
 Delta R.T.: -0.002 min
 Response: 147187
 Conc: 175.29 ng/ml



#10 AR-1221-3

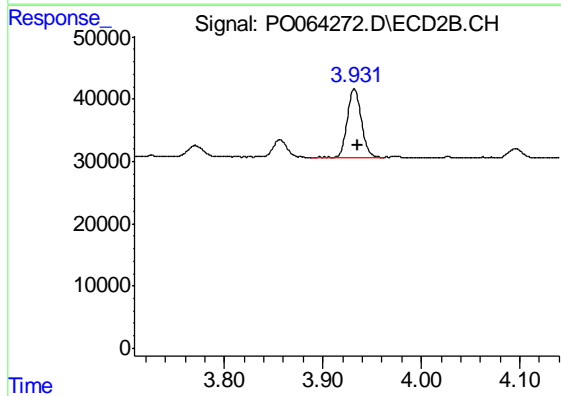
R.T.: 3.932 min
 Delta R.T.: -0.003 min
 Response: 110176
 Conc: 170.38 ng/ml



#11 AR-1232-1

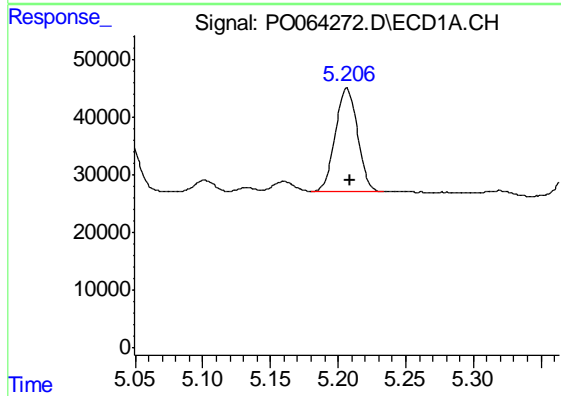
R.T.: 4.682 min
 Delta R.T.: -0.003 min
 Response: 147187
 Conc: 114.80 ng/ml

Instrument :
 ECD_O
 ClientSampleId :
 TP-20-SMS



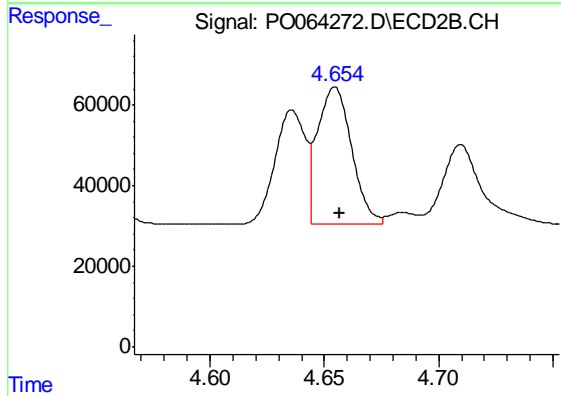
#11 AR-1232-1

R.T.: 3.932 min
 Delta R.T.: -0.003 min
 Response: 110176
 Conc: 108.79 ng/ml



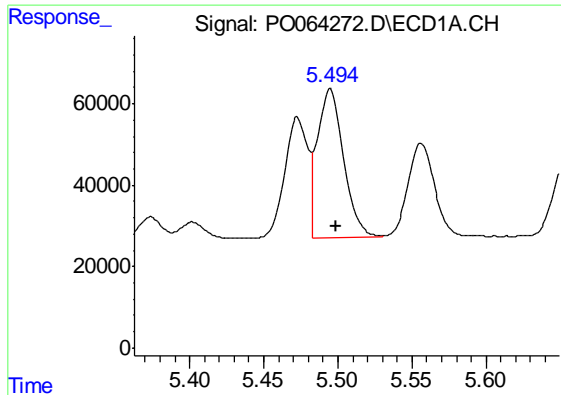
#12 AR-1232-2

R.T.: 5.207 min
 Delta R.T.: -0.002 min
 Response: 207065
 Conc: 294.74 ng/ml



#12 AR-1232-2

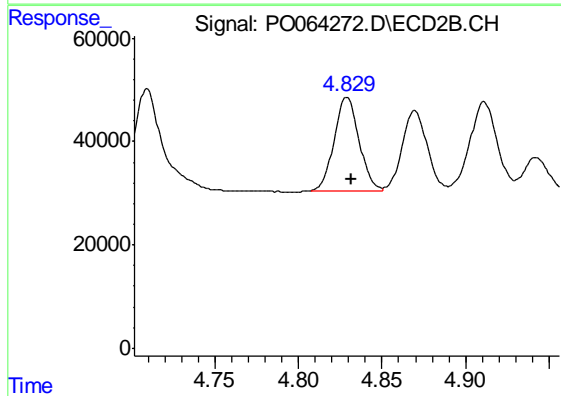
R.T.: 4.655 min
 Delta R.T.: -0.002 min
 Response: 354388
 Conc: 325.07 ng/ml



#13 AR-1232-3

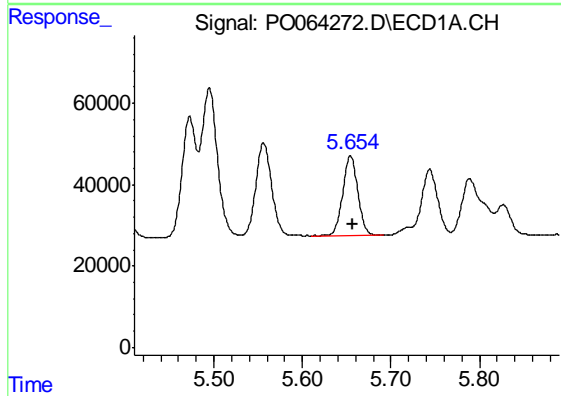
R.T.: 5.495 min
 Delta R.T.: -0.004 min
 Response: 455929
 Conc: 329.23 ng/ml

Instrument :
 ECD_O
 ClientSampleId :
 TP-20-SMS



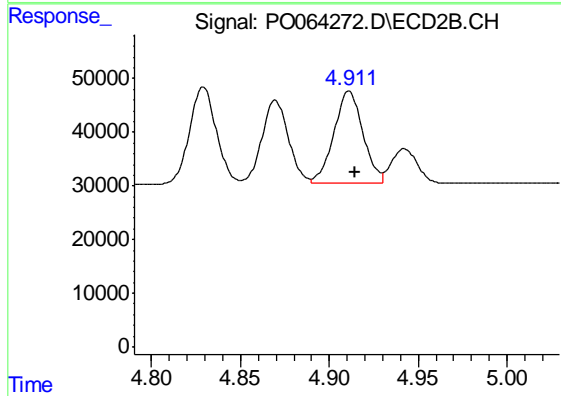
#13 AR-1232-3

R.T.: 4.829 min
 Delta R.T.: -0.003 min
 Response: 187128
 Conc: 321.88 ng/ml



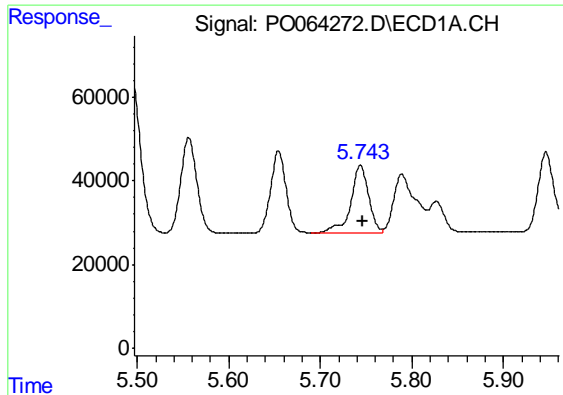
#14 AR-1232-4

R.T.: 5.654 min
 Delta R.T.: -0.003 min
 Response: 230498
 Conc: 323.97 ng/ml



#14 AR-1232-4

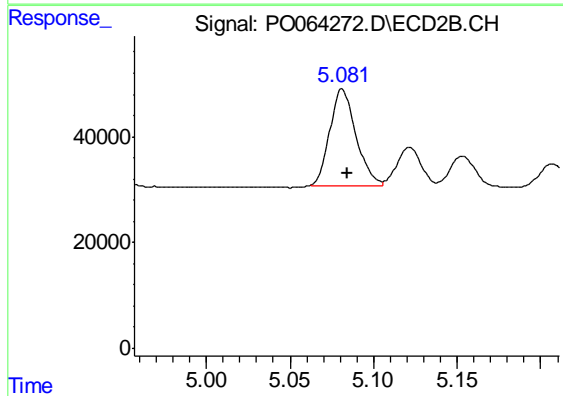
R.T.: 4.911 min
 Delta R.T.: -0.003 min
 Response: 195217
 Conc: 367.72 ng/ml



#15 AR-1232-5

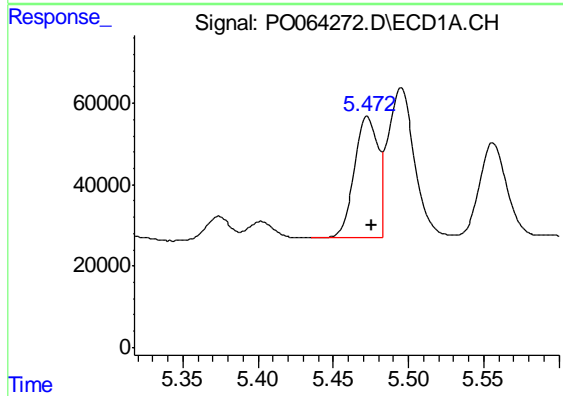
R.T.: 5.744 min
Delta R.T.: -0.003 min
Response: 219512
Conc: 389.75 ng/ml

Instrument :
ECD_O
ClientSampleId :
TP-20-SMS



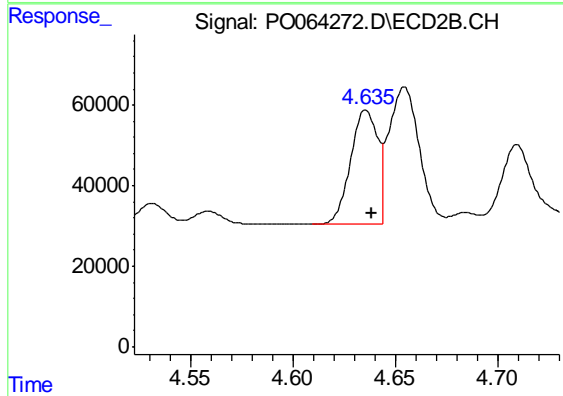
#15 AR-1232-5

R.T.: 5.081 min
Delta R.T.: -0.003 min
Response: 199886
Conc: 341.38 ng/ml



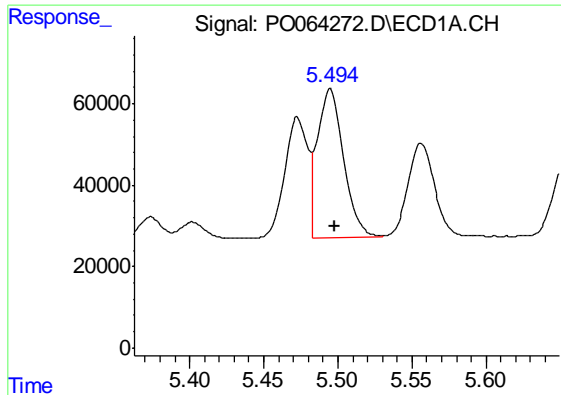
#16 AR-1242-1

R.T.: 5.473 min
Delta R.T.: -0.003 min
Response: 320040
Conc: 336.11 ng/ml



#16 AR-1242-1

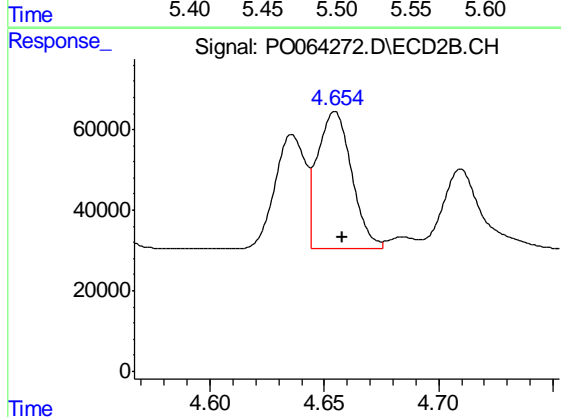
R.T.: 4.636 min
Delta R.T.: -0.003 min
Response: 262616
Conc: 342.97 ng/ml



#17 AR-1242-2

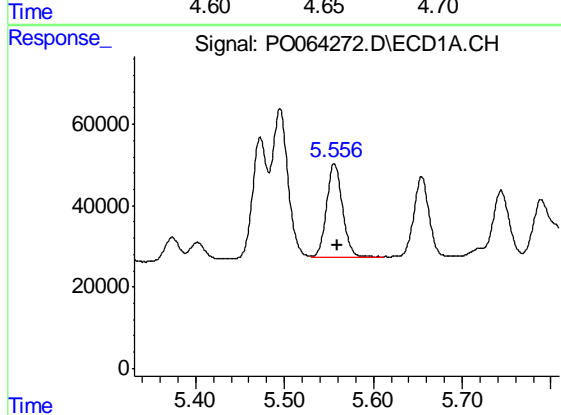
R.T.: 5.495 min
 Delta R.T.: -0.003 min
 Response: 455929
 Conc: 337.58 ng/ml

Instrument :
 ECD_O
 ClientSampleId :
 TP-20-SMS



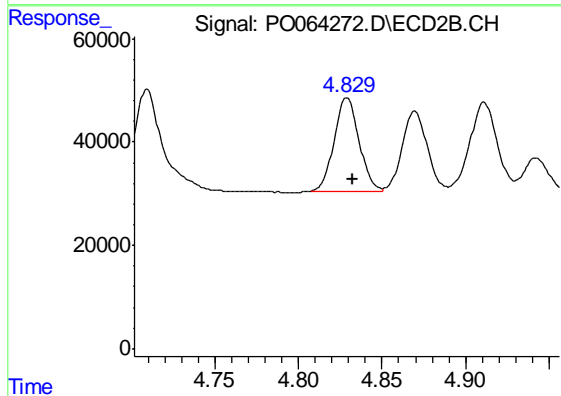
#17 AR-1242-2

R.T.: 4.655 min
 Delta R.T.: -0.003 min
 Response: 354388
 Conc: 343.01 ng/ml



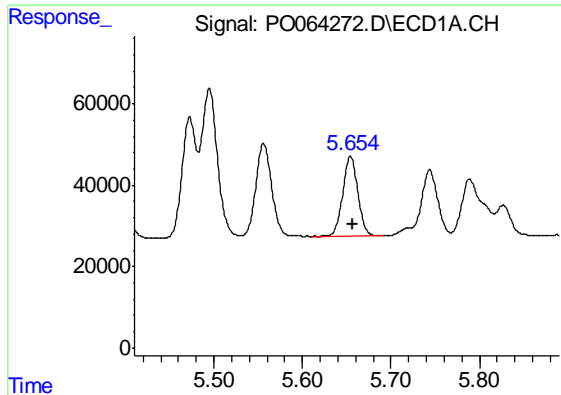
#18 AR-1242-3

R.T.: 5.556 min
 Delta R.T.: -0.003 min
 Response: 285120
 Conc: 332.26 ng/ml



#18 AR-1242-3

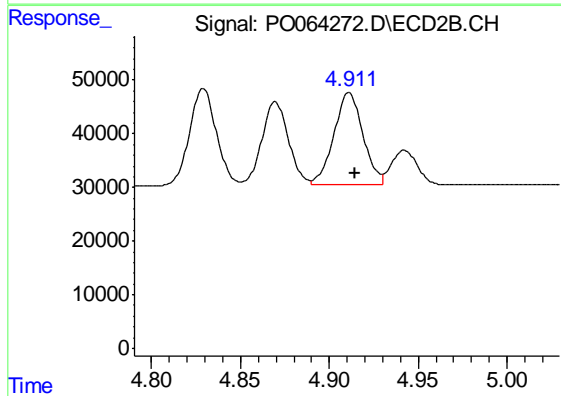
R.T.: 4.829 min
 Delta R.T.: -0.003 min
 Response: 187128
 Conc: 333.91 ng/ml



#19 AR-1242-4

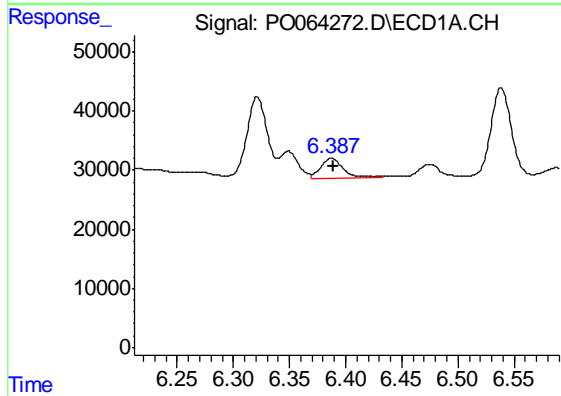
R.T.: 5.654 min
 Delta R.T.: -0.003 min
 Response: 230498
 Conc: 329.65 ng/ml

Instrument :
 ECD_O
 ClientSampleId :
 TP-20-SMS



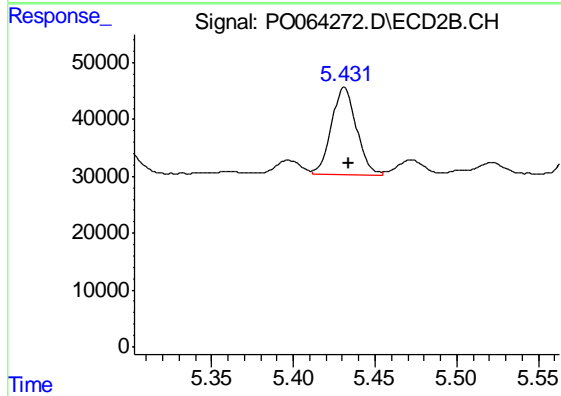
#19 AR-1242-4

R.T.: 4.911 min
 Delta R.T.: -0.003 min
 Response: 195217
 Conc: 344.19 ng/ml



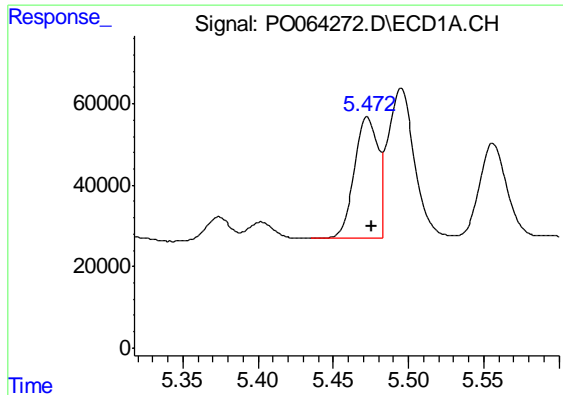
#20 AR-1242-5

R.T.: 6.388 min
 Delta R.T.: -0.002 min
 Response: 47906
 Conc: 56.71 ng/ml



#20 AR-1242-5

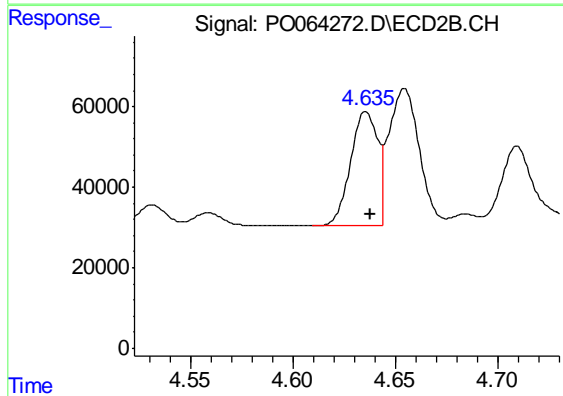
R.T.: 5.431 min
 Delta R.T.: -0.003 min
 Response: 164647
 Conc: 209.79 ng/ml



#21 AR-1248-1

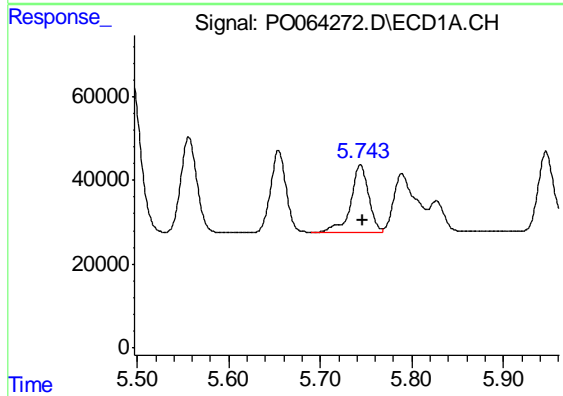
R.T.: 5.473 min
 Delta R.T.: -0.003 min
 Response: 320040
 Conc: 570.58 ng/ml

Instrument :
 ECD_O
 ClientSampleId :
 TP-20-SMS



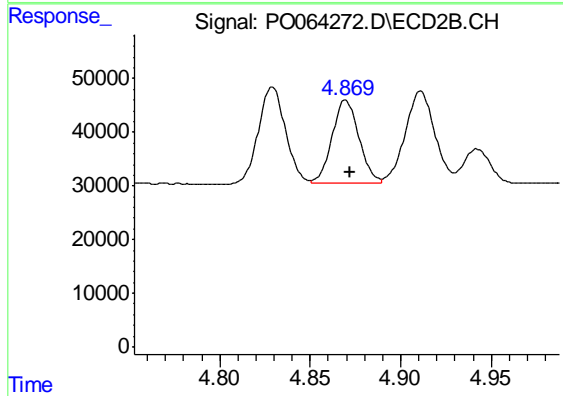
#21 AR-1248-1

R.T.: 4.636 min
 Delta R.T.: -0.002 min
 Response: 262616
 Conc: 584.84 ng/ml



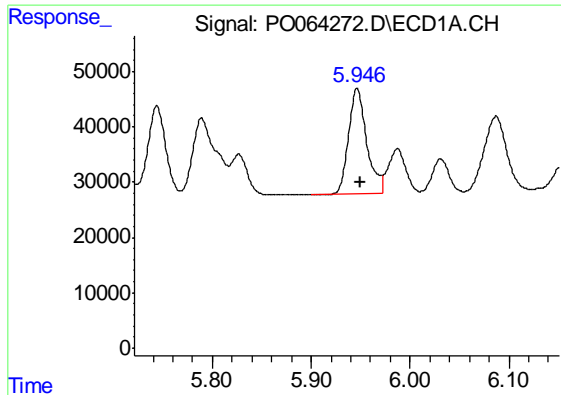
#22 AR-1248-2

R.T.: 5.744 min
 Delta R.T.: -0.003 min
 Response: 219512
 Conc: 264.89 ng/ml



#22 AR-1248-2

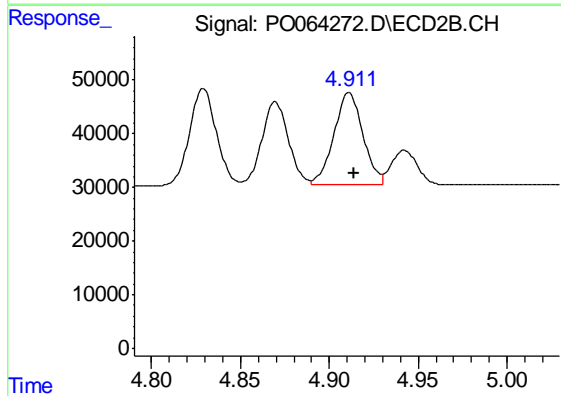
R.T.: 4.870 min
 Delta R.T.: -0.003 min
 Response: 160905
 Conc: 255.89 ng/ml



#23 AR-1248-3

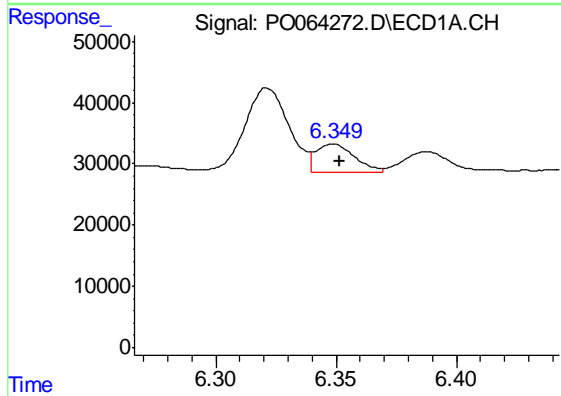
R.T.: 5.946 min
 Delta R.T.: -0.004 min
 Response: 244522
 Conc: 265.82 ng/ml

Instrument :
 ECD_O
 ClientSampleId :
 TP-20-SMS



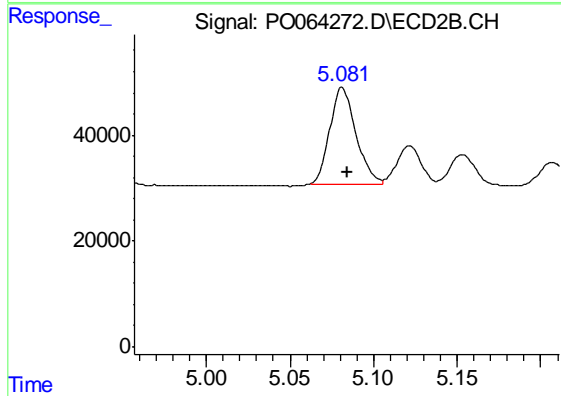
#23 AR-1248-3

R.T.: 4.911 min
 Delta R.T.: -0.002 min
 Response: 195217
 Conc: 302.56 ng/ml



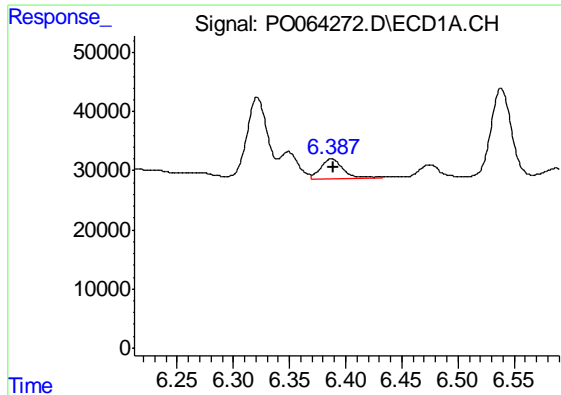
#24 AR-1248-4

R.T.: 6.349 min
 Delta R.T.: -0.002 min
 Response: 52428
 Conc: 47.30 ng/ml



#24 AR-1248-4

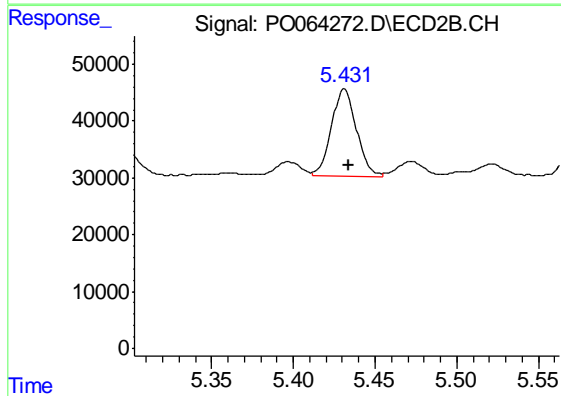
R.T.: 5.081 min
 Delta R.T.: -0.003 min
 Response: 199886
 Conc: 253.58 ng/ml



#25 AR-1248-5

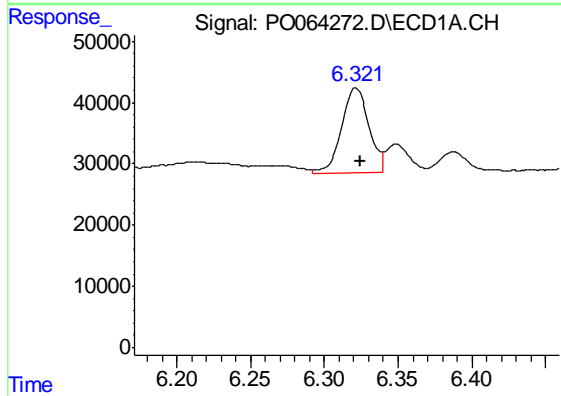
R.T.: 6.388 min
 Delta R.T.: -0.002 min
 Response: 47906
 Conc: 44.65 ng/ml

Instrument :
 ECD_O
 ClientSampleId :
 TP-20-SMS



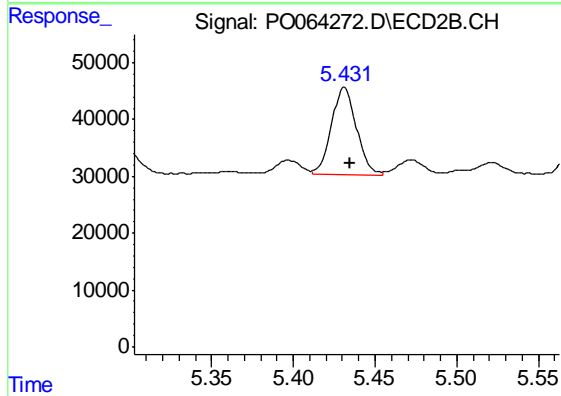
#25 AR-1248-5

R.T.: 5.431 min
 Delta R.T.: -0.003 min
 Response: 164647
 Conc: 135.90 ng/ml



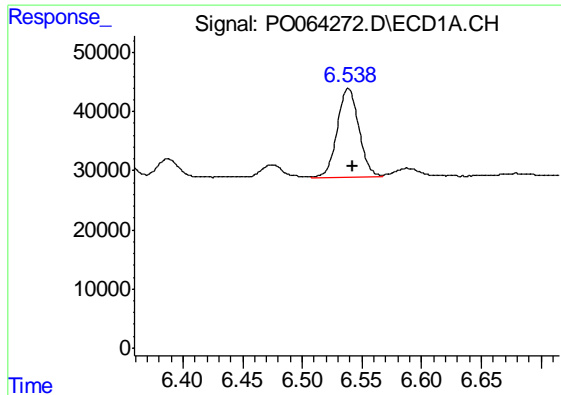
#26 AR-1254-1

R.T.: 6.321 min
 Delta R.T.: -0.004 min
 Response: 180471
 Conc: 110.57 ng/ml



#26 AR-1254-1

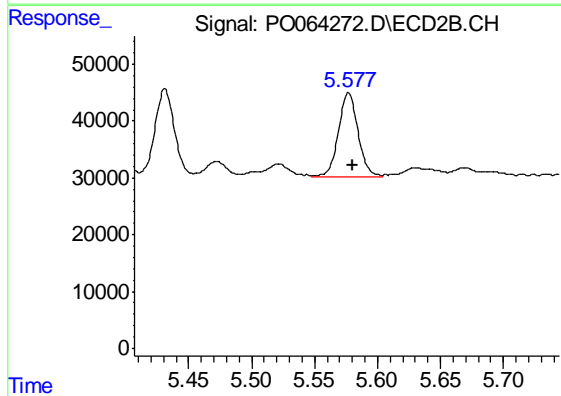
R.T.: 5.431 min
 Delta R.T.: -0.004 min
 Response: 164647
 Conc: 83.77 ng/ml



#27 AR-1254-2

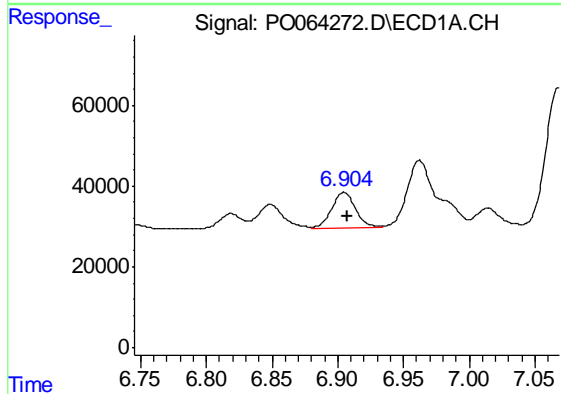
R.T.: 6.538 min
 Delta R.T.: -0.004 min
 Response: 190342
 Conc: 73.02 ng/ml

Instrument :
 ECD_O
 ClientSampleId :
 TP-20-SMS



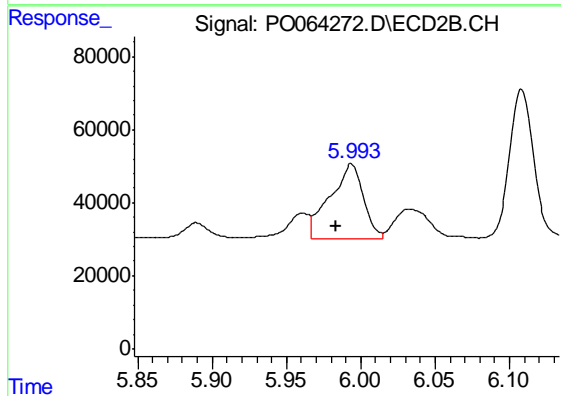
#27 AR-1254-2

R.T.: 5.577 min
 Delta R.T.: -0.003 min
 Response: 160826
 Conc: 89.80 ng/ml



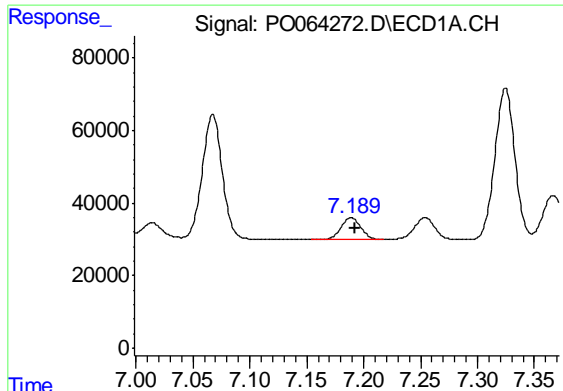
#28 AR-1254-3

R.T.: 6.905 min
 Delta R.T.: -0.003 min
 Response: 111600
 Conc: 38.67 ng/ml



#28 AR-1254-3

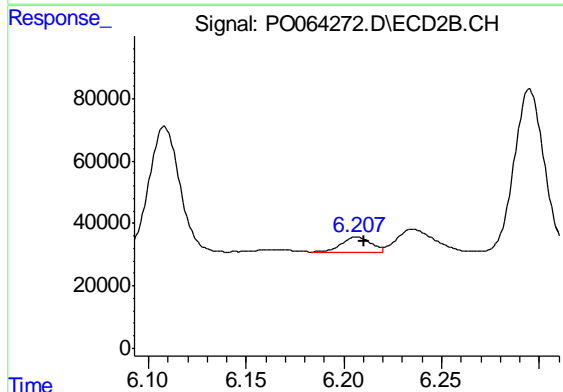
R.T.: 5.994 min
 Delta R.T.: 0.011 min
 Response: 318715
 Conc: 102.98 ng/ml



#29 AR-1254-4

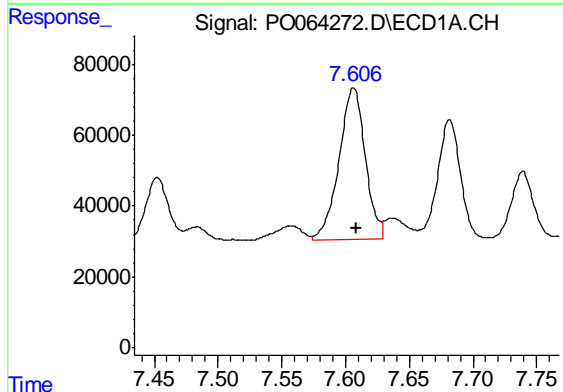
R.T.: 7.189 min
 Delta R.T.: -0.004 min
 Response: 75365
 Conc: 32.91 ng/ml

Instrument :
 ECD_O
 ClientSampleId :
 TP-20-SMS



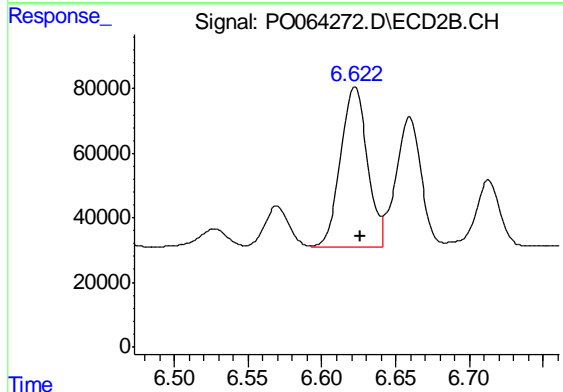
#29 AR-1254-4

R.T.: 6.207 min
 Delta R.T.: -0.003 min
 Response: 55299
 Conc: 26.80 ng/ml



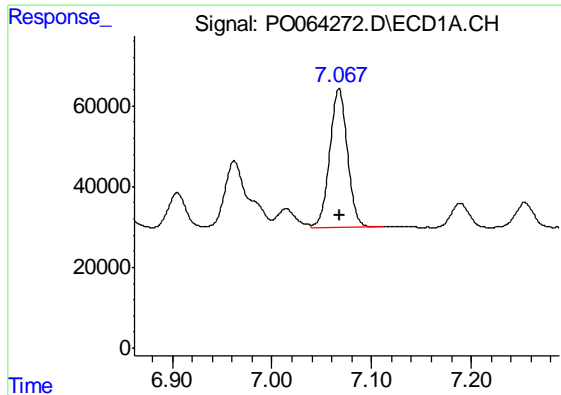
#30 AR-1254-5

R.T.: 7.606 min
 Delta R.T.: -0.003 min
 Response: 614995
 Conc: 240.68 ng/ml



#30 AR-1254-5

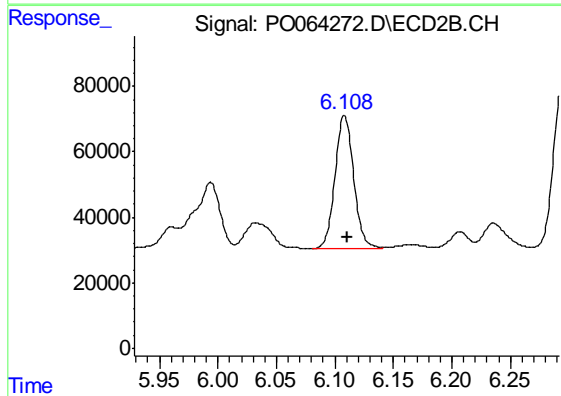
R.T.: 6.622 min
 Delta R.T.: -0.004 min
 Response: 631158
 Conc: 209.26 ng/ml



#31 AR-1260-1

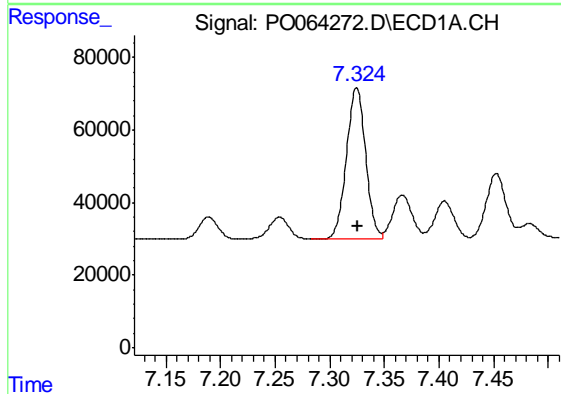
R.T.: 7.067 min
Delta R.T.: -0.001 min
Response: 423781
Conc: 224.56 ng/ml

Instrument :
ECD_O
ClientSampleId :
TP-20-SMS



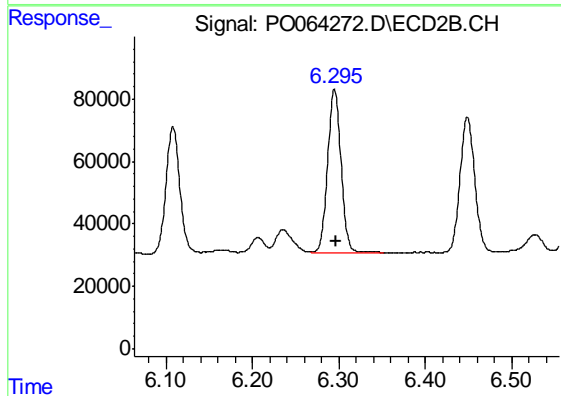
#31 AR-1260-1

R.T.: 6.108 min
Delta R.T.: -0.003 min
Response: 455223
Conc: 259.35 ng/ml



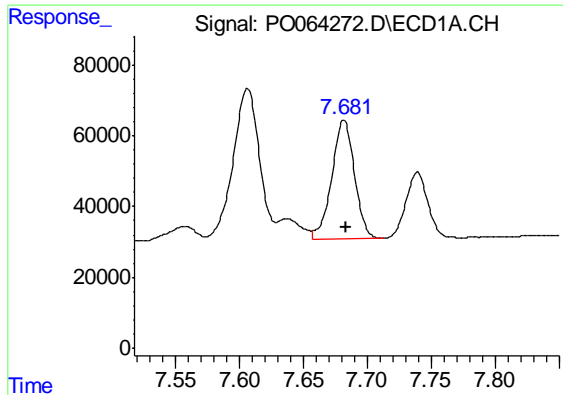
#32 AR-1260-2

R.T.: 7.325 min
Delta R.T.: 0.000 min
Response: 510636
Conc: 218.34 ng/ml



#32 AR-1260-2

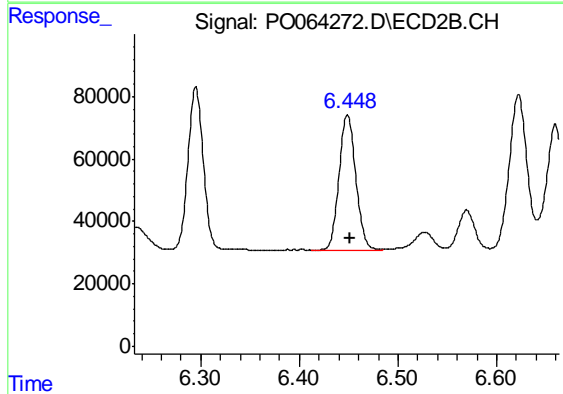
R.T.: 6.295 min
Delta R.T.: -0.002 min
Response: 564903
Conc: 253.91 ng/ml



#33 AR-1260-3

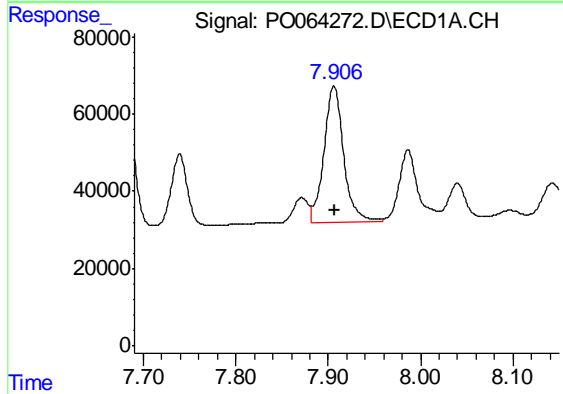
R.T.: 7.682 min
 Delta R.T.: -0.001 min
 Response: 414758
 Conc: 224.04 ng/ml

Instrument :
 ECD_O
 ClientSampleId :
 TP-20-SMS



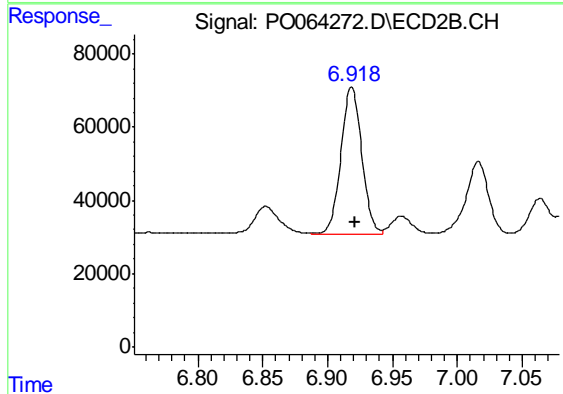
#33 AR-1260-3

R.T.: 6.449 min
 Delta R.T.: -0.002 min
 Response: 510400
 Conc: 251.03 ng/ml



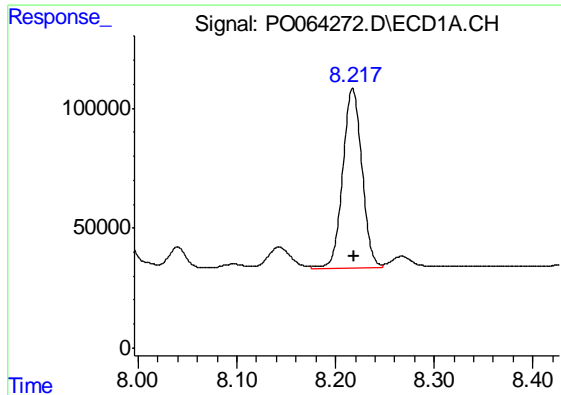
#34 AR-1260-4

R.T.: 7.906 min
 Delta R.T.: 0.000 min
 Response: 529090
 Conc: 241.42 ng/ml



#34 AR-1260-4

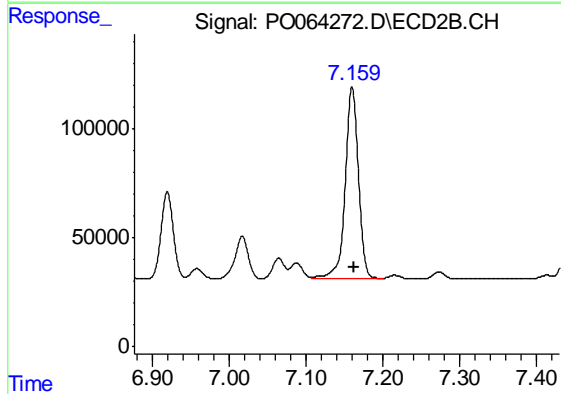
R.T.: 6.919 min
 Delta R.T.: -0.003 min
 Response: 445339
 Conc: 240.11 ng/ml



#35 AR-1260-5

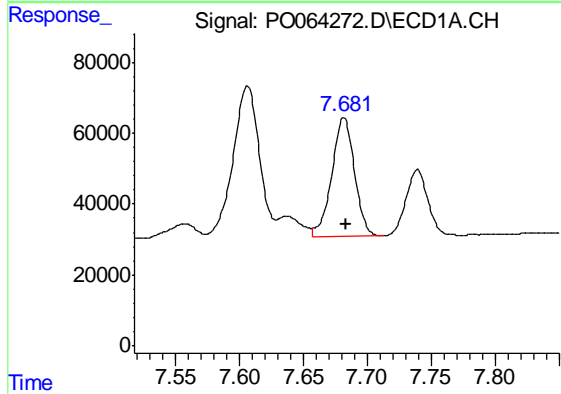
R.T.: 8.217 min
Delta R.T.: -0.001 min
Response: 1012008
Conc: 229.22 ng/ml

Instrument :
ECD_O
ClientSampleId :
TP-20-SMS



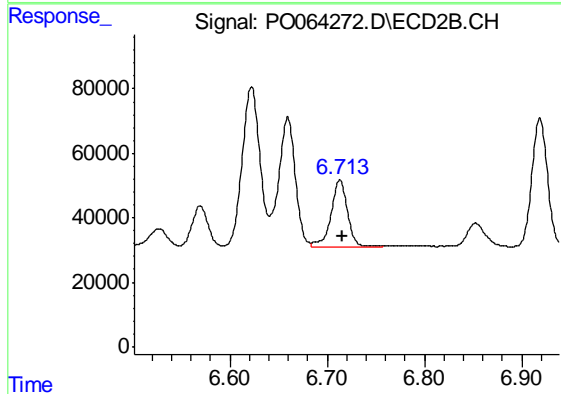
#35 AR-1260-5

R.T.: 7.159 min
Delta R.T.: -0.002 min
Response: 1067899
Conc: 220.58 ng/ml



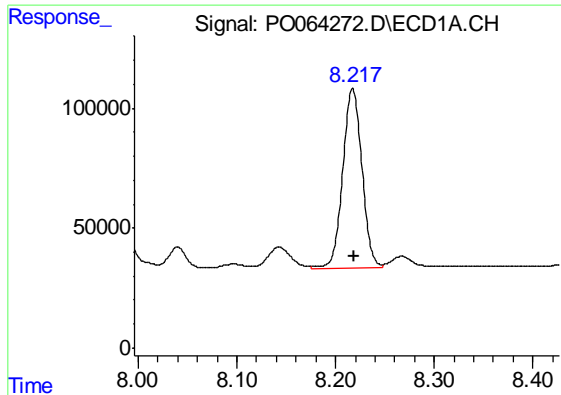
#36 AR-1262-1

R.T.: 7.682 min
Delta R.T.: -0.002 min
Response: 414758
Conc: 138.92 ng/ml



#36 AR-1262-1

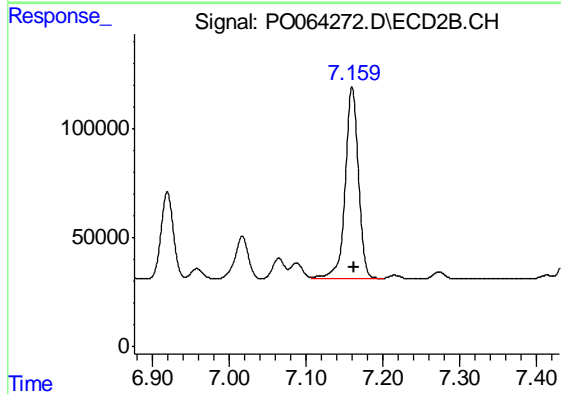
R.T.: 6.713 min
Delta R.T.: -0.003 min
Response: 249401
Conc: 198.48 ng/ml



#37 AR-1262-2

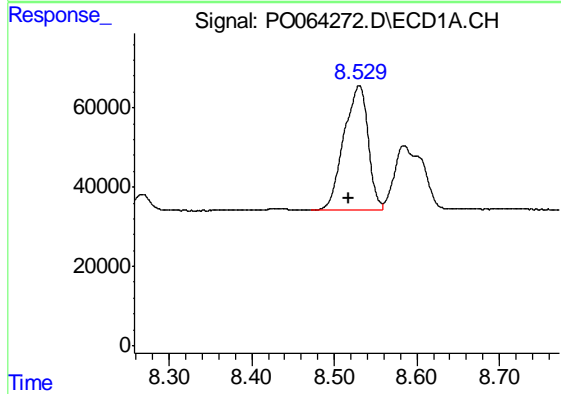
R.T.: 8.217 min
 Delta R.T.: -0.002 min
 Response: 1012008
 Conc: 183.54 ng/ml

Instrument :
 ECD_O
 ClientSampleId :
 TP-20-SMS



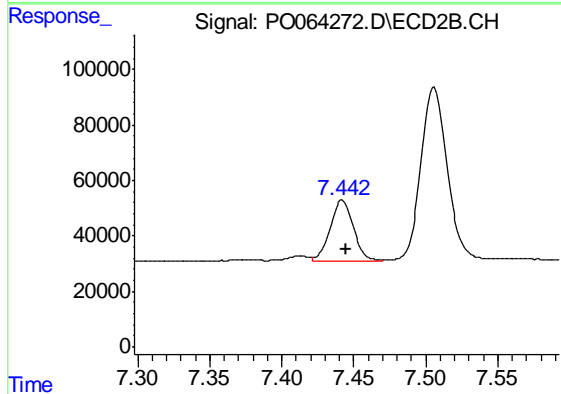
#37 AR-1262-2

R.T.: 7.159 min
 Delta R.T.: -0.003 min
 Response: 1067899
 Conc: 179.02 ng/ml



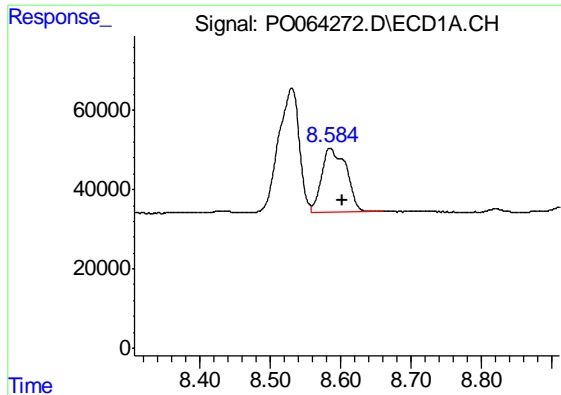
#38 AR-1262-3

R.T.: 8.530 min
 Delta R.T.: 0.012 min
 Response: 636186
 Conc: 164.42 ng/ml



#38 AR-1262-3

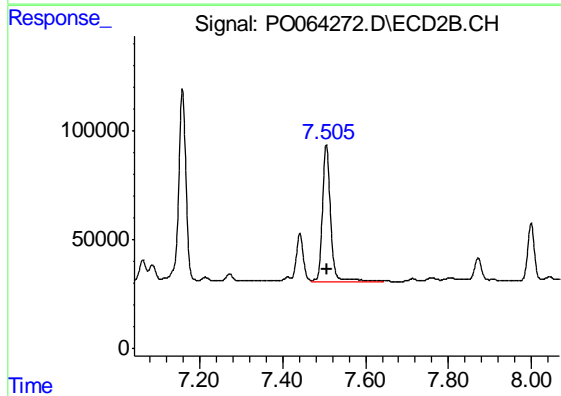
R.T.: 7.442 min
 Delta R.T.: -0.003 min
 Response: 249417
 Conc: 106.99 ng/ml



#39 AR-1262-4

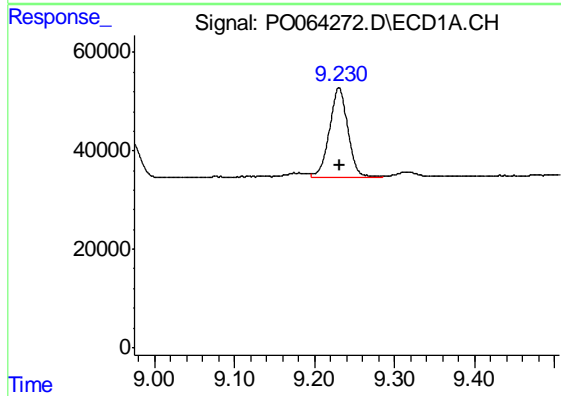
R.T.: 8.585 min
Delta R.T.: -0.018 min
Response: 390158
Conc: 133.47 ng/ml

Instrument :
ECD_O
ClientSampled :
TP-20-SMS



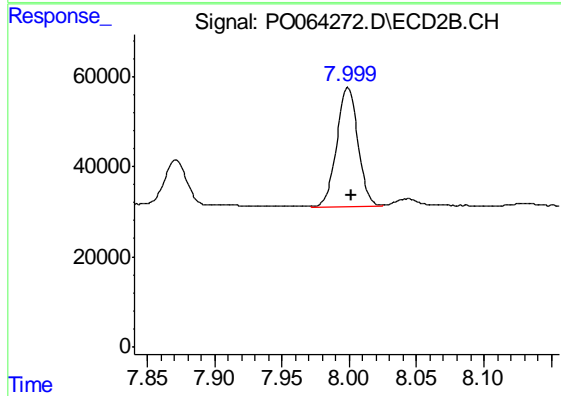
#39 AR-1262-4

R.T.: 7.506 min
Delta R.T.: -0.003 min
Response: 845412
Conc: 189.85 ng/ml



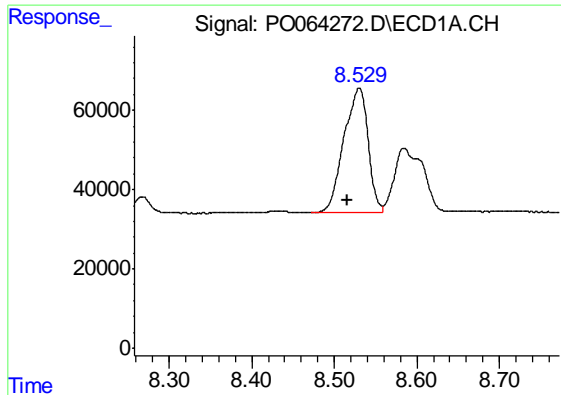
#40 AR-1262-5

R.T.: 9.230 min
Delta R.T.: 0.000 min
Response: 289841
Conc: 138.09 ng/ml



#40 AR-1262-5

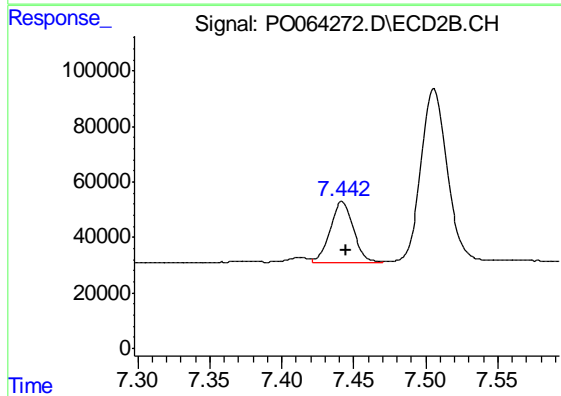
R.T.: 7.999 min
Delta R.T.: -0.002 min
Response: 290770
Conc: 137.67 ng/ml



#41 AR-1268-1

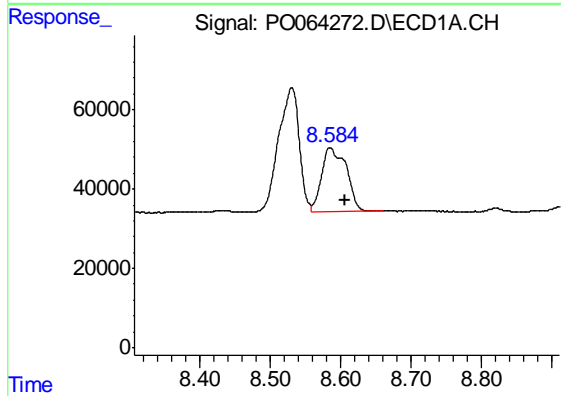
R.T.: 8.530 min
 Delta R.T.: 0.014 min
 Response: 636186
 Conc: 97.58 ng/ml

Instrument :
 ECD_O
 ClientSampleId :
 TP-20-SMS



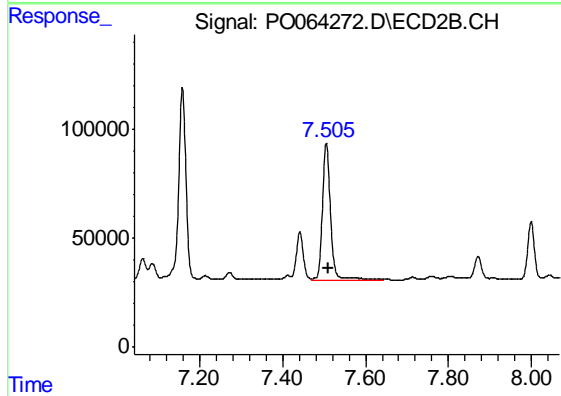
#41 AR-1268-1

R.T.: 7.442 min
 Delta R.T.: -0.003 min
 Response: 249417
 Conc: 35.72 ng/ml



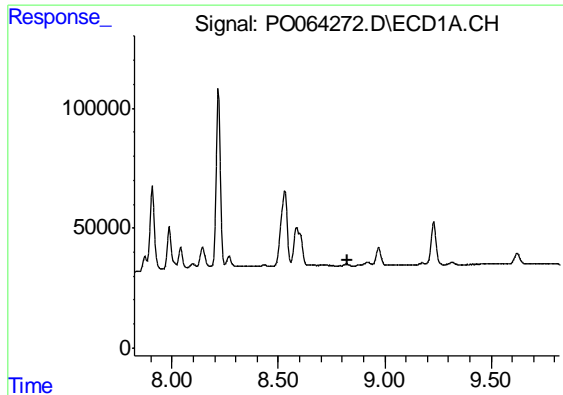
#42 AR-1268-2

R.T.: 8.585 min
 Delta R.T.: -0.021 min
 Response: 390158
 Conc: 64.58 ng/ml



#42 AR-1268-2

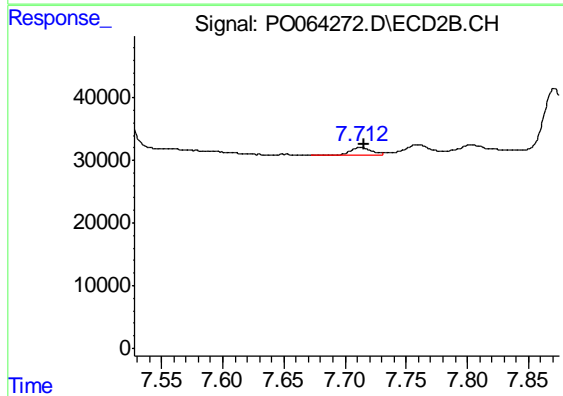
R.T.: 7.506 min
 Delta R.T.: -0.004 min
 Response: 845412
 Conc: 132.04 ng/ml



#43 AR-1268-3

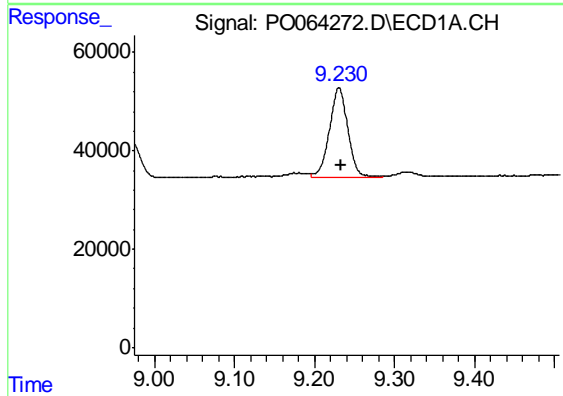
R.T.: 0.000 min
 Exp R.T. : 8.823 min
 Response: 0
 Conc: N.D.

Instrument :
 ECD_O
 ClientSampleId :
 TP-20-SMS



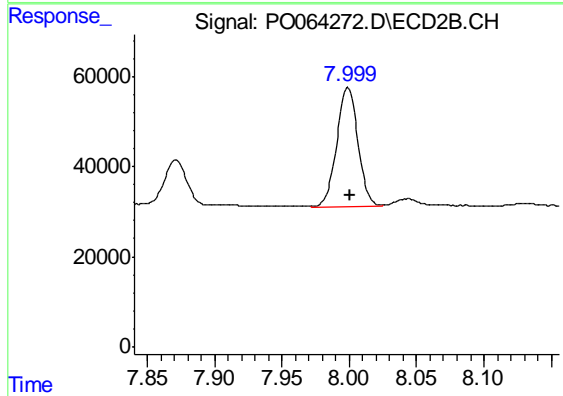
#43 AR-1268-3

R.T.: 7.713 min
 Delta R.T.: -0.003 min
 Response: 16302
 Conc: 3.11 ng/ml



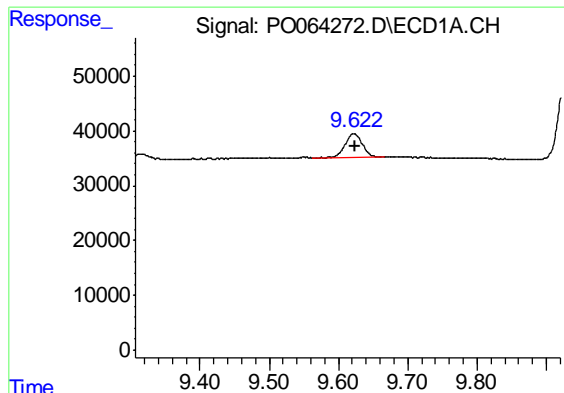
#44 AR-1268-4

R.T.: 9.230 min
 Delta R.T.: -0.003 min
 Response: 289841
 Conc: 123.88 ng/ml



#44 AR-1268-4

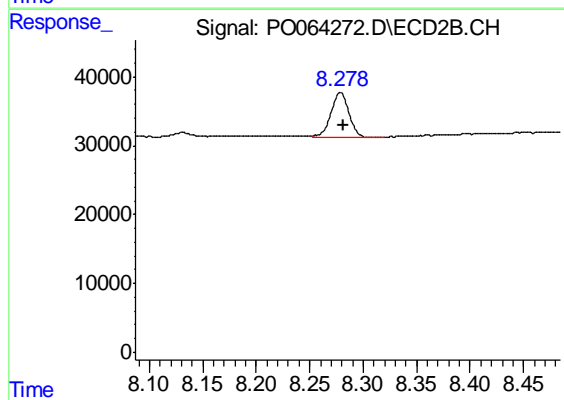
R.T.: 7.999 min
 Delta R.T.: -0.002 min
 Response: 290770
 Conc: 124.46 ng/ml



#45 AR-1268-5

R.T.: 9.622 min
Delta R.T.: -0.002 min
Response: 74626
Conc: 4.86 ng/ml

Instrument :
ECD_O
ClientSampleId :
TP-20-SMS



#45 AR-1268-5

R.T.: 8.279 min
Delta R.T.: -0.002 min
Response: 74610
Conc: 4.52 ng/ml