

Data Path : Z:\pestpcbsrv\HPCHEM1\ECD\_0\Data\PO120219\  
 Data File : P0064260.D  
 Signal(s) : Signal #1: ECD1A.CH Signal #2: ECD2B.CH  
 Acq On : 02 Dec 2019 16:18  
 Operator : SM/AJ  
 Sample : PB125186BL  
 Misc :  
 ALS Vial : 18 Sample Multiplier: 1

Instrument :  
 ECD\_0  
 ClientSampleId :  
 PB125186BL

Integration File signal 1: autoint1.e  
 Integration File signal 2: autoint2.e  
 Quant Time: Dec 03 01:31:47 2019  
 Quant Method : Z:\pestpcbsrv\HPCHEM1\ECD\_0\methods\PO112719.M  
 Quant Title : GC EXTRACTABLES  
 QLast Update : Thu Nov 28 01:28:08 2019  
 Response via : Initial Calibration  
 Integrator: ChemStation 6890 Scale Mode: Small noise peaks clipped

Volume Inj. : 2 µl  
 Signal #1 Phase : ZB-MR1 Signal #2 Phase: ZB-MR2  
 Signal #1 Info : 30Mx0.32mmx 0.50µ Signal #2 Info : 30M x 0.32mm x 0.25µm

Compound	RT#1	RT#2	Resp#1	Resp#2	ng/ml	ng/ml
----------	------	------	--------	--------	-------	-------

-----  
 System Monitoring Compounds

1) SA Tetrachlo...	4.312	3.560	636226	543642	21.483	22.856
2) SA Decachlor...	9.942	8.525	733441	646044	17.896	15.815

Target Compounds  
 -----

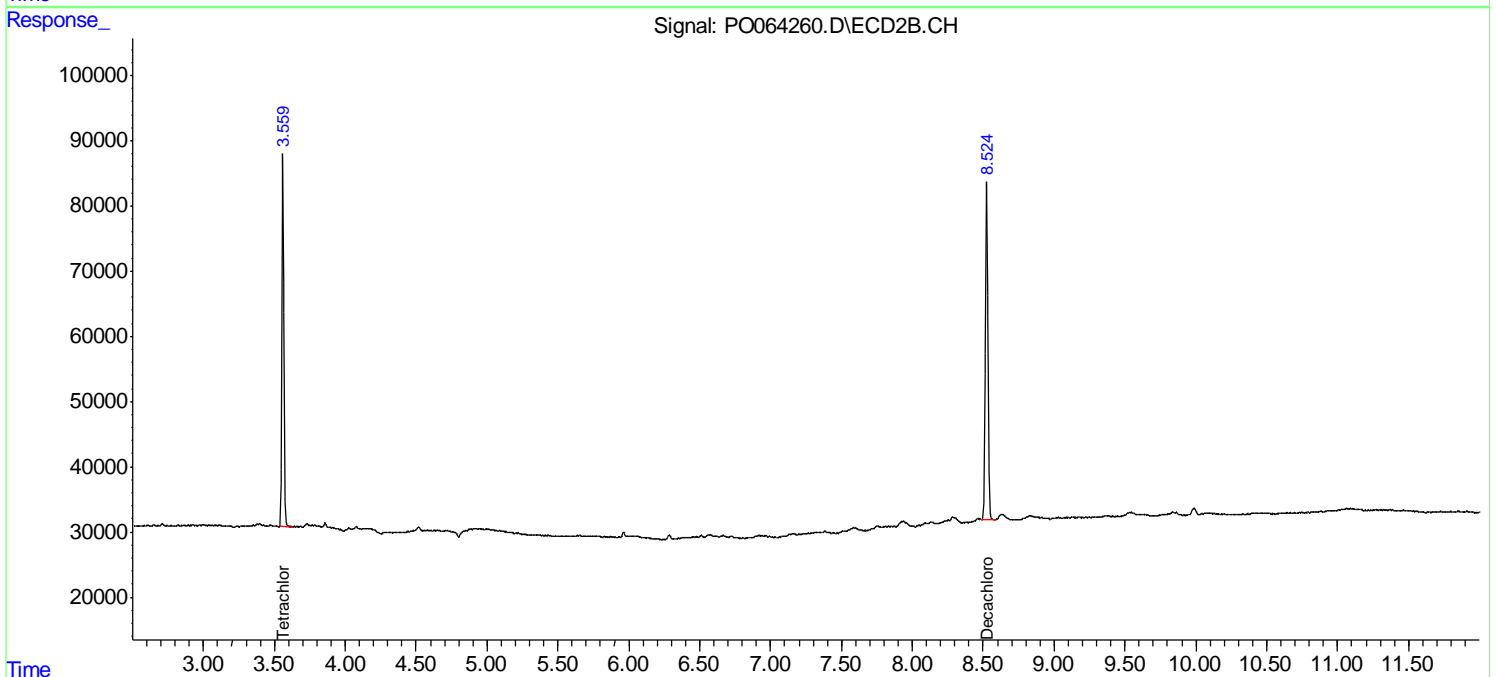
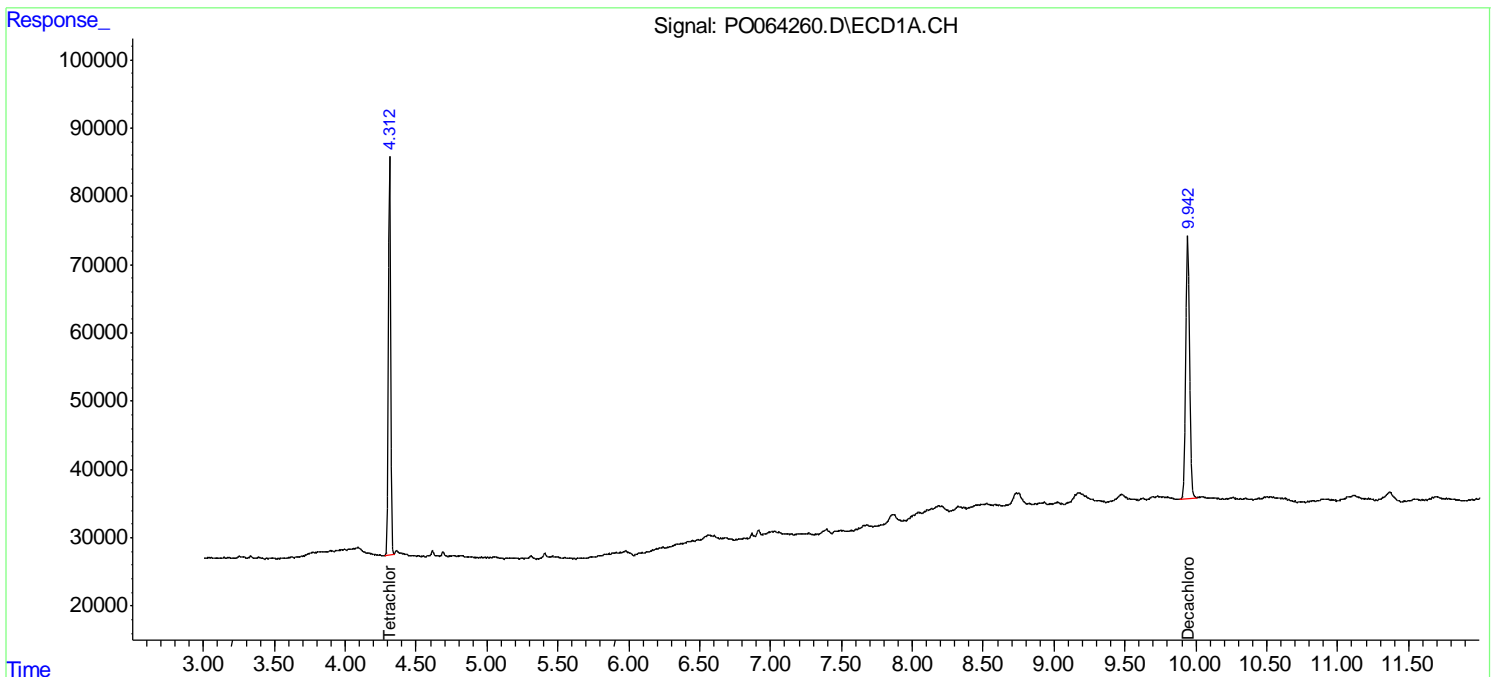
(f)=RT Delta > 1/2 Window (#)=Amounts differ by > 25% (m)=manual int.

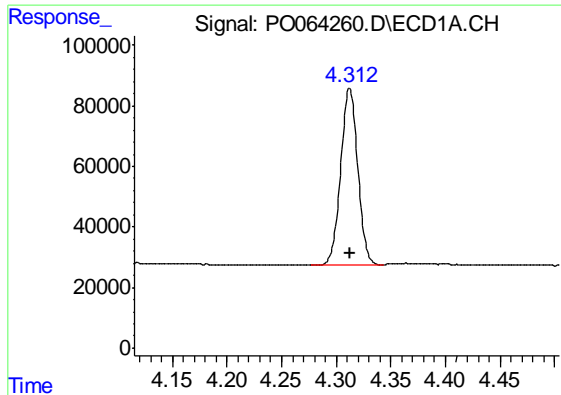
Data Path : Z:\pestpcbsrv\HPCHEM1\ECD\_O\Data\PO120219\  
 Data File : PO064260.D  
 Signal(s) : Signal #1: ECD1A.CH Signal #2: ECD2B.CH  
 Acq On : 02 Dec 2019 16:18  
 Operator : SM/AJ  
 Sample : PB125186BL  
 Misc :  
 ALS Vial : 18 Sample Multiplier: 1

Instrument :  
 ECD\_O  
 ClientSampleId :  
 PB125186BL

Integration File signal 1: autoint1.e  
 Integration File signal 2: autoint2.e  
 Quant Time: Dec 03 01:31:47 2019  
 Quant Method : Z:\pestpcbsrv\HPCHEM1\ECD\_O\methods\PO112719.M  
 Quant Title : GC EXTRACTABLES  
 QLast Update : Thu Nov 28 01:28:08 2019  
 Response via : Initial Calibration  
 Integrator: ChemStation 6890 Scale Mode: Small noise peaks clipped

Volume Inj. : 2 µl  
 Signal #1 Phase : ZB-MR1 Signal #2 Phase: ZB-MR2  
 Signal #1 Info : 30Mx0.32mmx 0.50µ Signal #2 Info : 30M x 0.32mm x 0.25µm

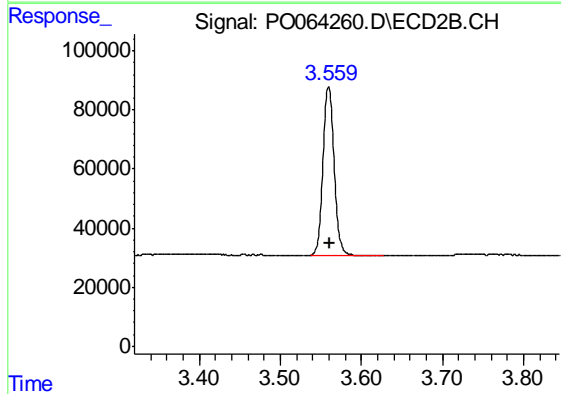




#1 Tetrachloro-m-xylene

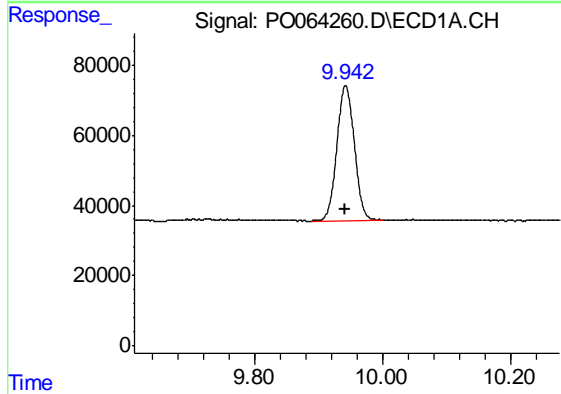
R.T.: 4.312 min  
Delta R.T.: 0.000 min  
Response: 636226  
Conc: 21.48 ng/ml

Instrument :  
ECD\_O  
ClientSampleId :  
PB125186BL



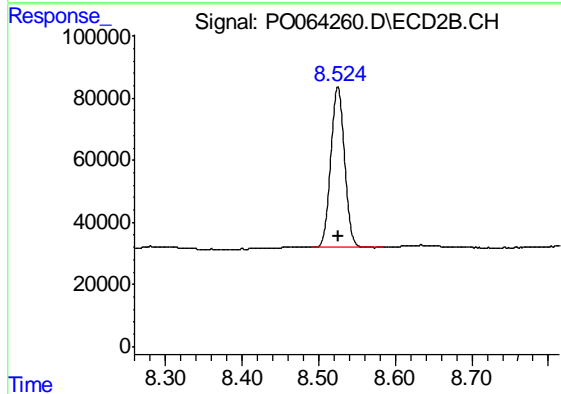
#1 Tetrachloro-m-xylene

R.T.: 3.560 min  
Delta R.T.: -0.002 min  
Response: 543642  
Conc: 22.86 ng/ml



#2 Decachlorobiphenyl

R.T.: 9.942 min  
Delta R.T.: 0.000 min  
Response: 733441  
Conc: 17.90 ng/ml



#2 Decachlorobiphenyl

R.T.: 8.525 min  
Delta R.T.: -0.002 min  
Response: 646044  
Conc: 15.81 ng/ml