

Data Path : Z:\pestpcbsrv\HPCHEM1\ECD_O\Data\PO120219\
 Data File : P0064268.D
 Signal(s) : Signal #1: ECD1A.CH Signal #2: ECD2B.CH
 Acq On : 02 Dec 2019 18:31
 Operator : SM/AJ
 Sample : K6084-07
 Misc :
 ALS Vial : 26 Sample Multiplier: 1

Instrument :
 ECD_O
ClientSampleId :
 30739

Manual Integrations
APPROVED
 mohammad
 12/3/2019 1:33:38 PM

Integration File signal 1: autoint1.e
 Integration File signal 2: autoint2.e
 Quant Time: Dec 03 01:36:12 2019
 Quant Method : Z:\pestpcbsrv\HPCHEM1\ECD_O\methods\PO112719.M
 Quant Title : GC EXTRACTABLES
 QLast Update : Thu Nov 28 01:28:08 2019
 Response via : Initial Calibration
 Integrator: ChemStation 6890 Scale Mode: Small noise peaks clipped

Volume Inj. : 2 µl
 Signal #1 Phase : ZB-MR1 Signal #2 Phase: ZB-MR2
 Signal #1 Info : 30Mx0.32mmx 0.50µ Signal #2 Info : 30M x 0.32mm x 0.25µm

Compound	RT#1	RT#2	Resp#1	Resp#2	ng/ml	ng/ml

System Monitoring Compounds						
1) SA Tetrachlo...	4.335	3.560	17715762	8722013	598.195m	366.700 #
2) SA Decachlor...	9.941	8.524	725891	728551	17.712	17.835

Target Compounds

(f)=RT Delta > 1/2 Window (#)=Amounts differ by > 25% (m)=manual int.

Data Path : Z:\pestpcbsrv\HPCHEM1\ECD_O\Data\PO120219\
 Data File : PO064268.D
 Signal(s) : Signal #1: ECD1A.CH Signal #2: ECD2B.CH
 Acq On : 02 Dec 2019 18:31
 Operator : SM/AJ
 Sample : K6084-07
 Misc :
 ALS Vial : 26 Sample Multiplier: 1

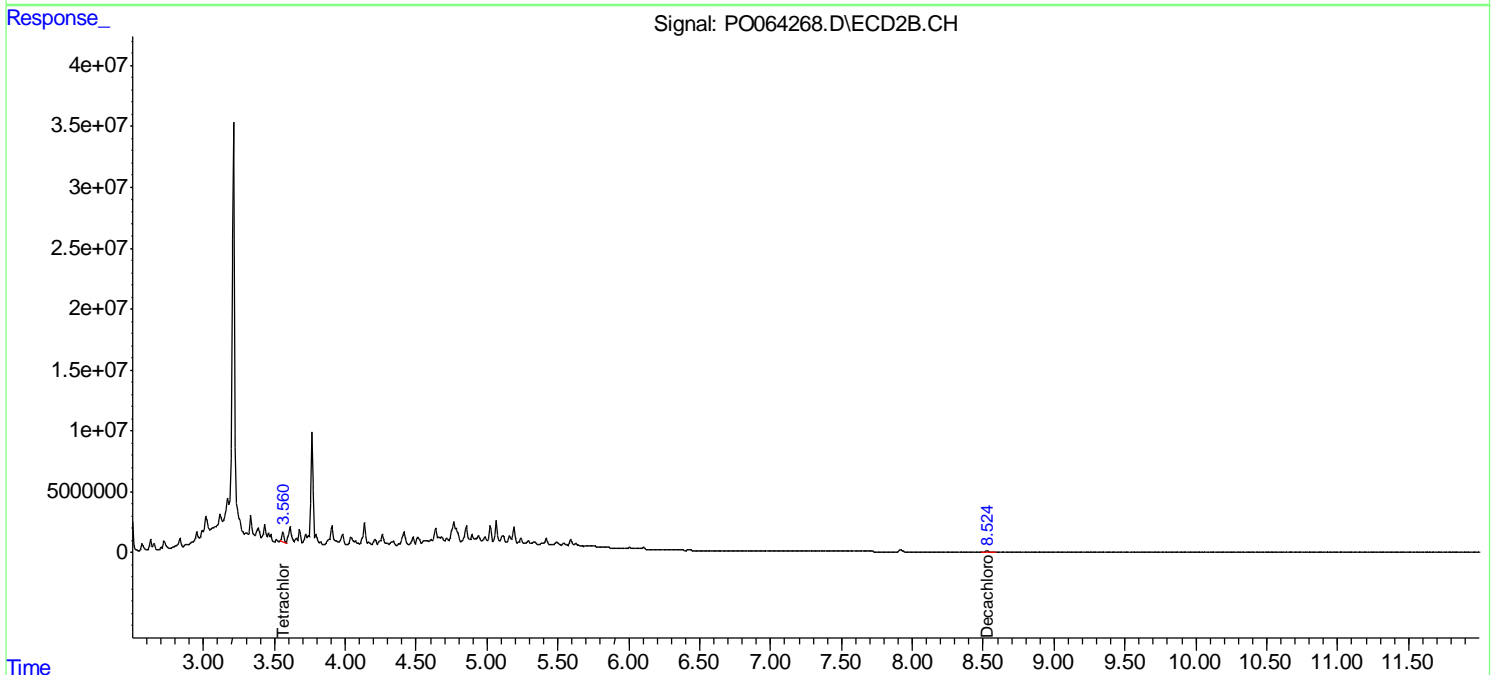
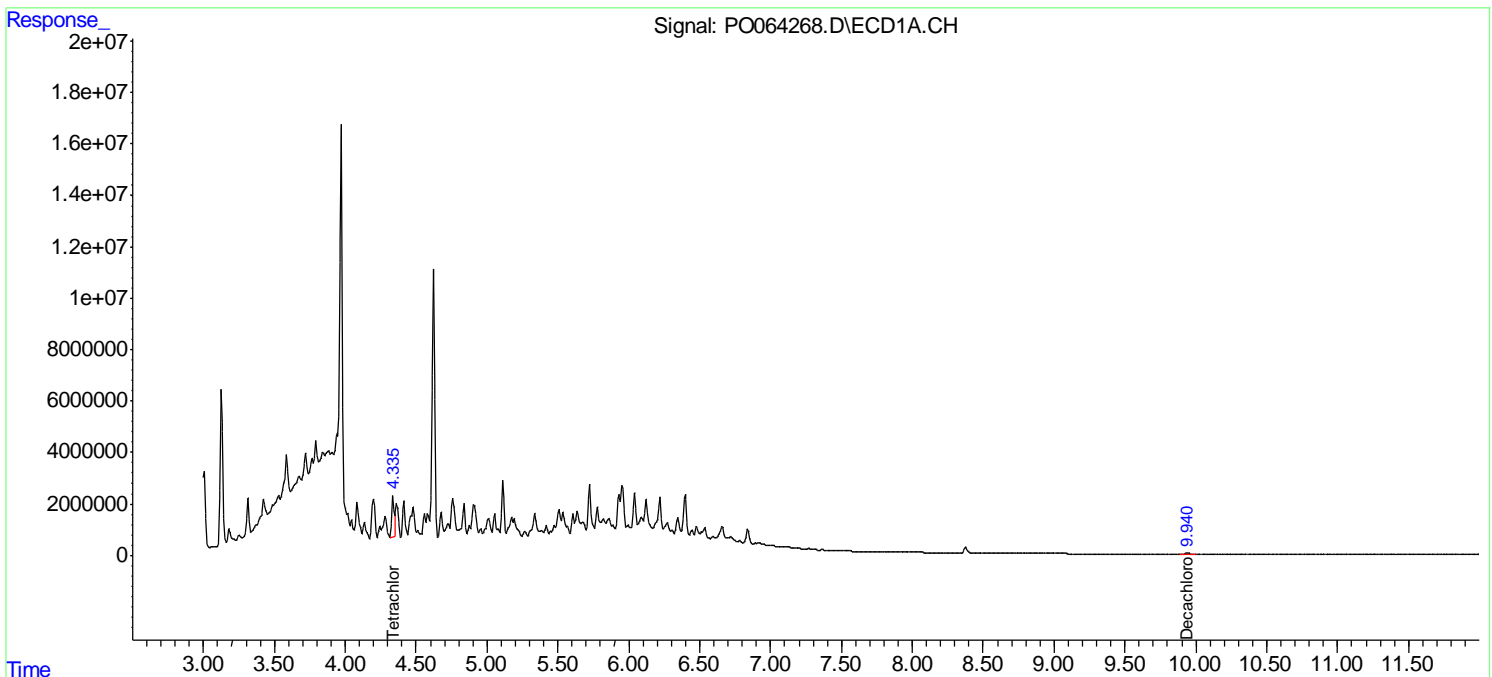
Instrument :
 ECD_O
 ClientSampleId :
 30739

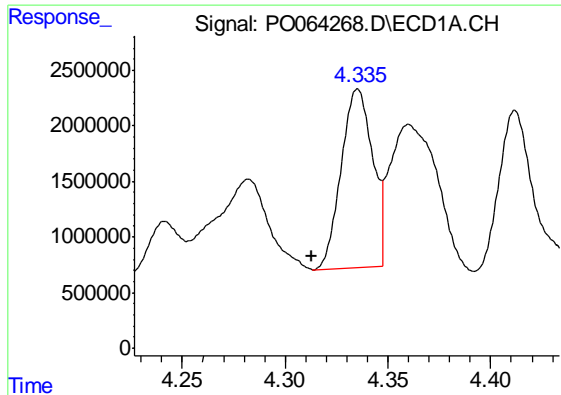
Manual Integrations
 APPROVED

mohammad
 12/3/2019 1:33:38 PM

Integration File signal 1: autoint1.e
 Integration File signal 2: autoint2.e
 Quant Time: Dec 03 01:36:12 2019
 Quant Method : Z:\pestpcbsrv\HPCHEM1\ECD_O\methods\PO112719.M
 Quant Title : GC EXTRACTABLES
 QLast Update : Thu Nov 28 01:28:08 2019
 Response via : Initial Calibration
 Integrator: ChemStation 6890 Scale Mode: Small noise peaks clipped

Volume Inj. : 2 µl
 Signal #1 Phase : ZB-MR1 Signal #2 Phase: ZB-MR2
 Signal #1 Info : 30Mx0.32mmx 0.50µ Signal #2 Info : 30M x 0.32mm x 0.25µm

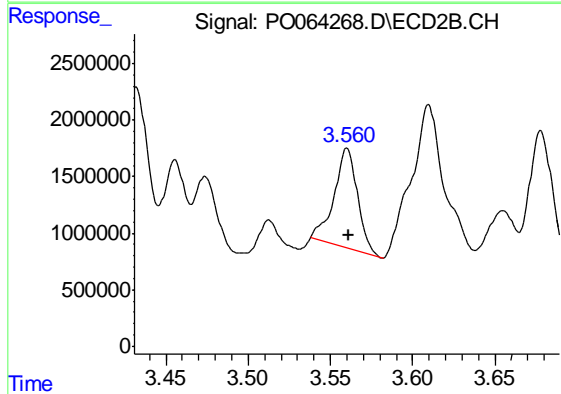




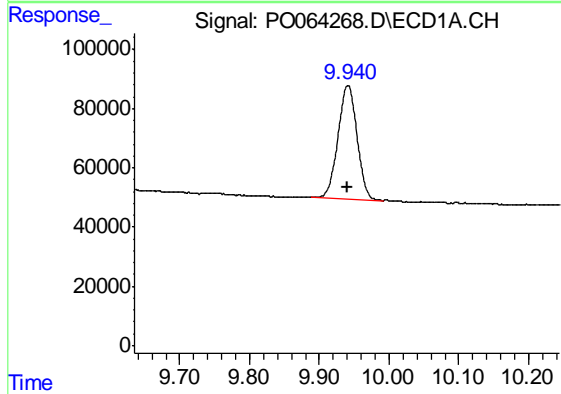
#1 Tetrachloro-m-xylene
 R.T.: 4.335 min
 Delta R.T.: 0.022 min
 Response: 17715762
 Conc: 598.19 ng/ml m

Instrument :
 ECD_O
 ClientSampled :
 30739

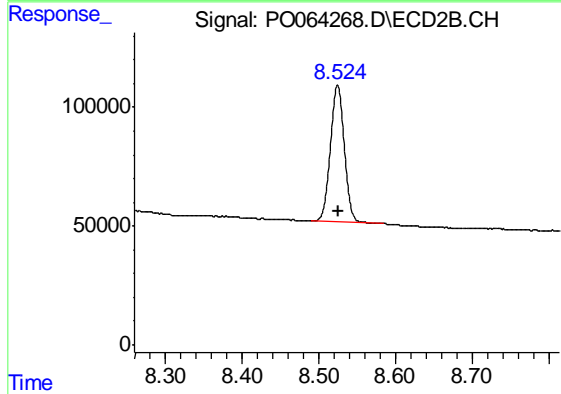
Manual Integrations
 APPROVED
 mohammad
 12/3/2019 1:33:38 PM



#1 Tetrachloro-m-xylene
 R.T.: 3.560 min
 Delta R.T.: -0.001 min
 Response: 8722013
 Conc: 366.70 ng/ml



#2 Decachlorobiphenyl
 R.T.: 9.941 min
 Delta R.T.: 0.000 min
 Response: 725891
 Conc: 17.71 ng/ml



#2 Decachlorobiphenyl
 R.T.: 8.524 min
 Delta R.T.: -0.002 min
 Response: 728551
 Conc: 17.83 ng/ml