

Data Path : Z:\pestpcbsrv\HPCHEM1\ECD_0\Data\PO120319\
 Data File : PO064309.D
 Signal(s) : Signal #1: ECD1A.CH Signal #2: ECD2B.CH
 Acq On : 03 Dec 2019 14:20
 Operator : SM/AJ
 Sample : K6084-03RE
 Misc :
 ALS Vial : 14 Sample Multiplier: 1

Instrument :
 ECD_0
ClientSampled :
 30735RE

Manual Integrations
APPROVED
 mohammad
 12/4/2019 8:42:37 AM

Integration File signal 1: autoint1.e
 Integration File signal 2: autoint2.e
 Quant Time: Dec 03 15:09:28 2019
 Quant Method : Z:\pestpcbsrv\HPCHEM1\ECD_0\methods\PO112719.M
 Quant Title : GC EXTRACTABLES
 QLast Update : Thu Nov 28 01:28:08 2019
 Response via : Initial Calibration
 Integrator: ChemStation 6890 Scale Mode: Small noise peaks clipped

Volume Inj. : 2 µl
 Signal #1 Phase : ZB-MR1 Signal #2 Phase: ZB-MR2
 Signal #1 Info : 30Mx0.32mmx 0.50µ Signal #2 Info : 30M x 0.32mm x 0.25µm

Compound	RT#1	RT#2	Resp#1	Resp#2	ng/ml	ng/ml

System Monitoring Compounds						
1) SA Tetrachlo...	4.337	3.562	6680361	4992633	225.571m	209.906
2) SA Decachlor...	9.945	8.526	879434	887661	21.458	21.729

Target Compounds

 (f)=RT Delta > 1/2 Window (#)=Amounts differ by > 25% (m)=manual int.

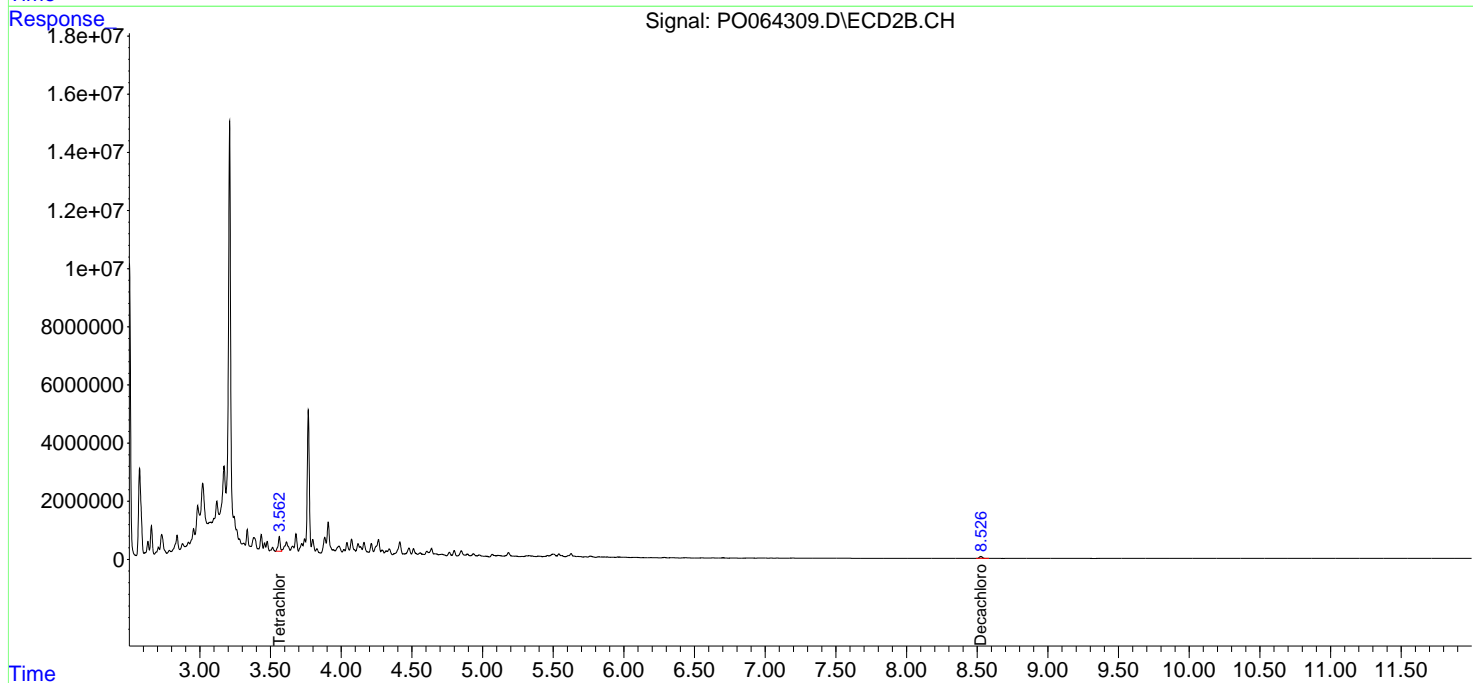
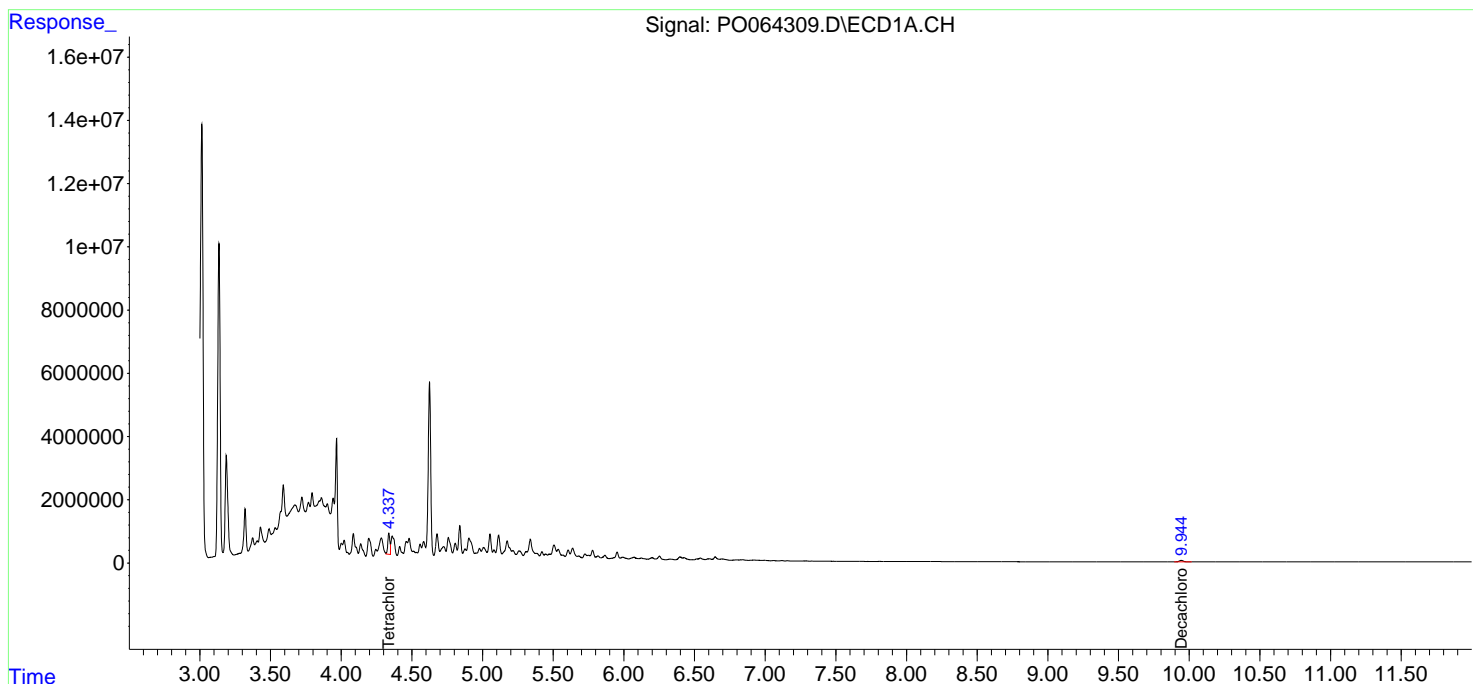
Data Path : Z:\pestpcbsrv\HPCHEM1\ECD_0\Data\PO120319\
 Data File : PO064309.D
 Signal(s) : Signal #1: ECD1A.CH Signal #2: ECD2B.CH
 Acq On : 03 Dec 2019 14:20
 Operator : SM/AJ
 Sample : K6084-03RE
 Misc :
 ALS Vial : 14 Sample Multiplier: 1

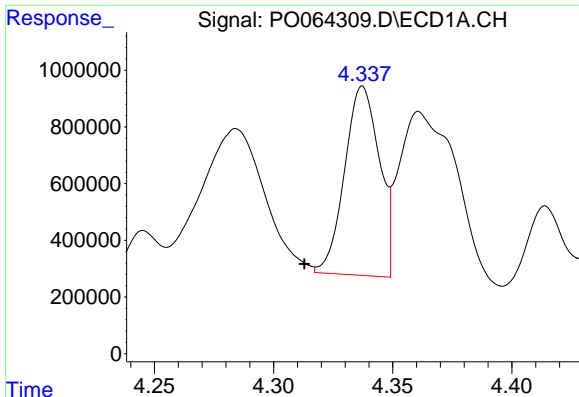
Instrument :
 ECD_O
ClientSampled :
 30735RE

Manual Integrations
APPROVED
 mohammad
 12/4/2019 8:42:37 AM

Integration File signal 1: autoint1.e
 Integration File signal 2: autoint2.e
 Quant Time: Dec 03 15:09:28 2019
 Quant Method : Z:\pestpcbsrv\HPCHEM1\ECD_0\methods\PO112719.M
 Quant Title : GC EXTRACTABLES
 QLast Update : Thu Nov 28 01:28:08 2019
 Response via : Initial Calibration
 Integrator: ChemStation 6890 Scale Mode: Small noise peaks clipped

Volume Inj. : 2 µl
 Signal #1 Phase : ZB-MR1 Signal #2 Phase: ZB-MR2
 Signal #1 Info : 30Mx0.32mmx 0.50µ Signal #2 Info : 30M x 0.32mm x 0.25µm

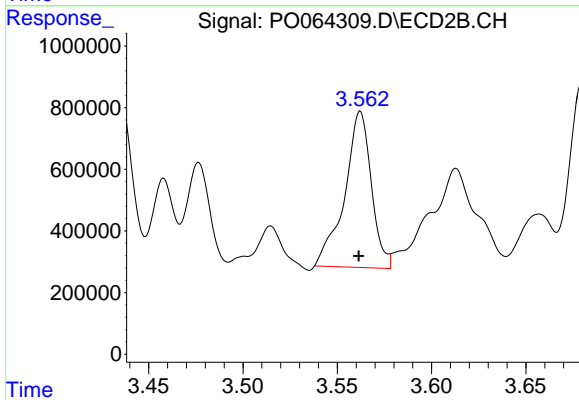




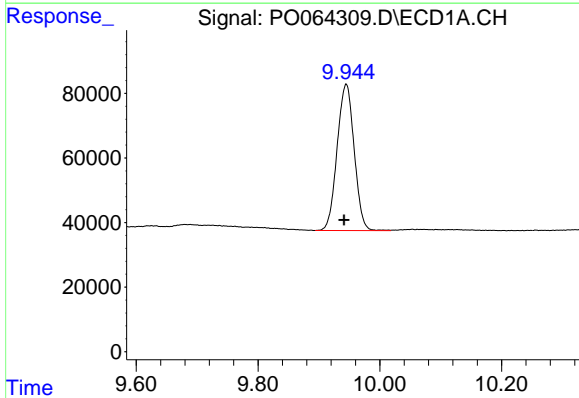
#1 Tetrachloro-m-xylene
 R.T.: 4.337 min
 Delta R.T.: 0.024 min
 Response: 6680361
 Conc: 225.57 ng/ml m

Instrument :
 ECD_O
 ClientSampled :
 30735RE

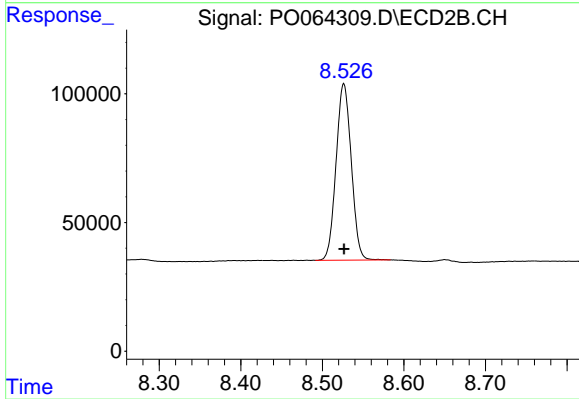
Manual Integrations
 APPROVED
 mohammad
 12/4/2019 8:42:37 AM



#1 Tetrachloro-m-xylene
 R.T.: 3.562 min
 Delta R.T.: 0.000 min
 Response: 4992633
 Conc: 209.91 ng/ml



#2 Decachlorobiphenyl
 R.T.: 9.945 min
 Delta R.T.: 0.003 min
 Response: 879434
 Conc: 21.46 ng/ml



#2 Decachlorobiphenyl
 R.T.: 8.526 min
 Delta R.T.: 0.000 min
 Response: 887661
 Conc: 21.73 ng/ml