

Data Path : Z:\pestpcbsrv\HPCHEM1\ECD_0\Data\PO120321\
 Data File : PO083412.D
 Signal(s) : Signal #1: ECD1A.CH Signal #2: ECD2B.CH
 Acq On : 03 Dec 2021 10:30
 Operator : AJ\MA
 Sample : AR1242CCC500
 Misc :
 ALS Vial : 4 Sample Multiplier: 1

Instrument :
 ECD_0
 ClientSampleId :
 AR1242CCC500

Integration File signal 1: autoint1.e
 Integration File signal 2: autoint2.e
 Quant Time: Dec 03 16:04:30 2021
 Quant Method : Z:\pestpcbsrv\HPCHEM1\ECD_0\methods\PO111921.M
 Quant Title : GC EXTRACTABLES
 QLast Update : Sat Nov 20 02:49:51 2021
 Response via : Initial Calibration
 Integrator: ChemStation 6890 Scale Mode: Small noise peaks clipped

Volume Inj. : 2 µl
 Signal #1 Phase : ZB-MR1 Signal #2 Phase: ZB-MR2
 Signal #1 Info : 30Mx0.32mmx 0.50µ Signal #2 Info : 30M x 0.32mm x 0.25µm

Compound	RT#1	RT#2	Resp#1	Resp#2	ng/ml	ng/ml

System Monitoring Compounds						
1) SA Tetrachlo...	4.957	3.948	4841060	1505489	55.163	49.390
2) SA Decachlor...	11.045	9.255	3509294	1510900	53.368	50.260
Target Compounds						
16) L4 AR-1242-1	6.290	5.205	1141970	463737	533.909	477.146
17) L4 AR-1242-2	6.313	5.224	1592997	626722	528.487	477.734
18) L4 AR-1242-3	6.380	5.415	976157	351329	522.754	484.963
19) L4 AR-1242-4	6.488	5.513	806478	342048	534.734	496.863
20) L4 AR-1242-5	7.276	6.078	819729	457358	529.883	493.814

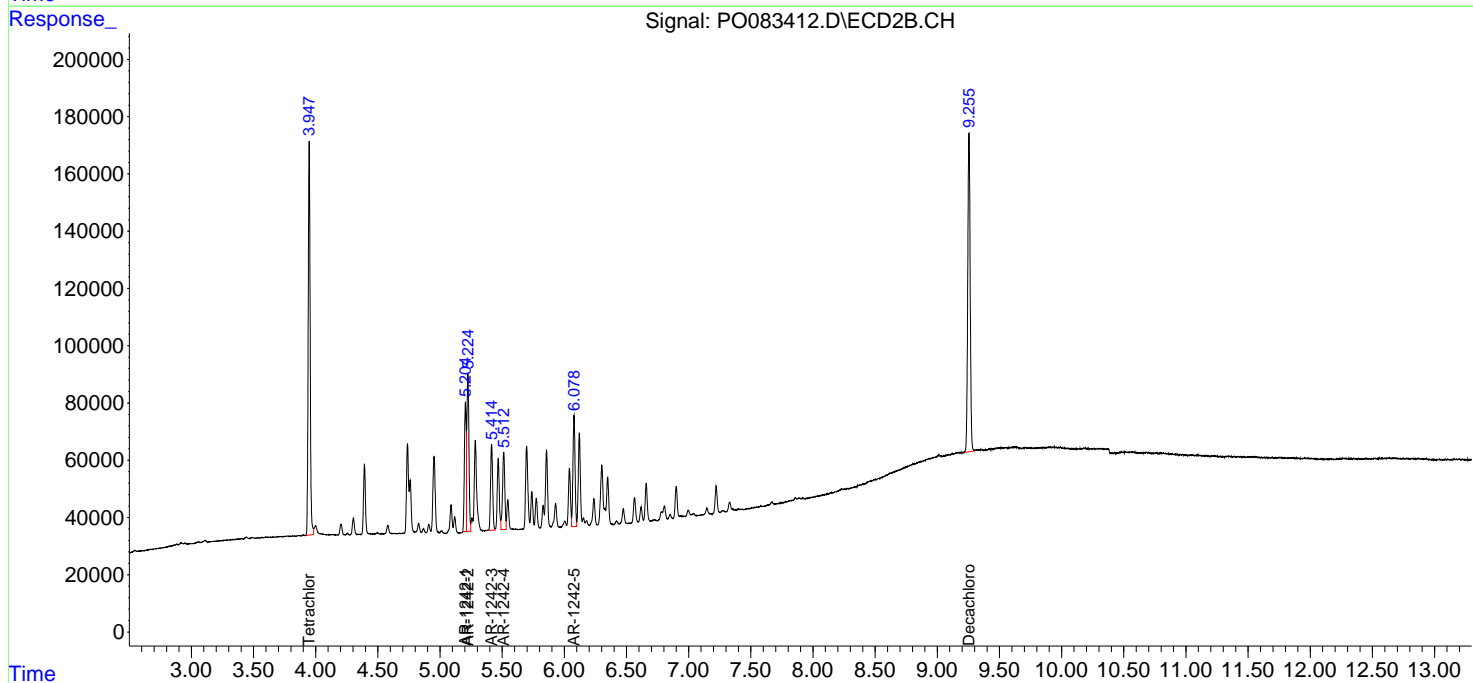
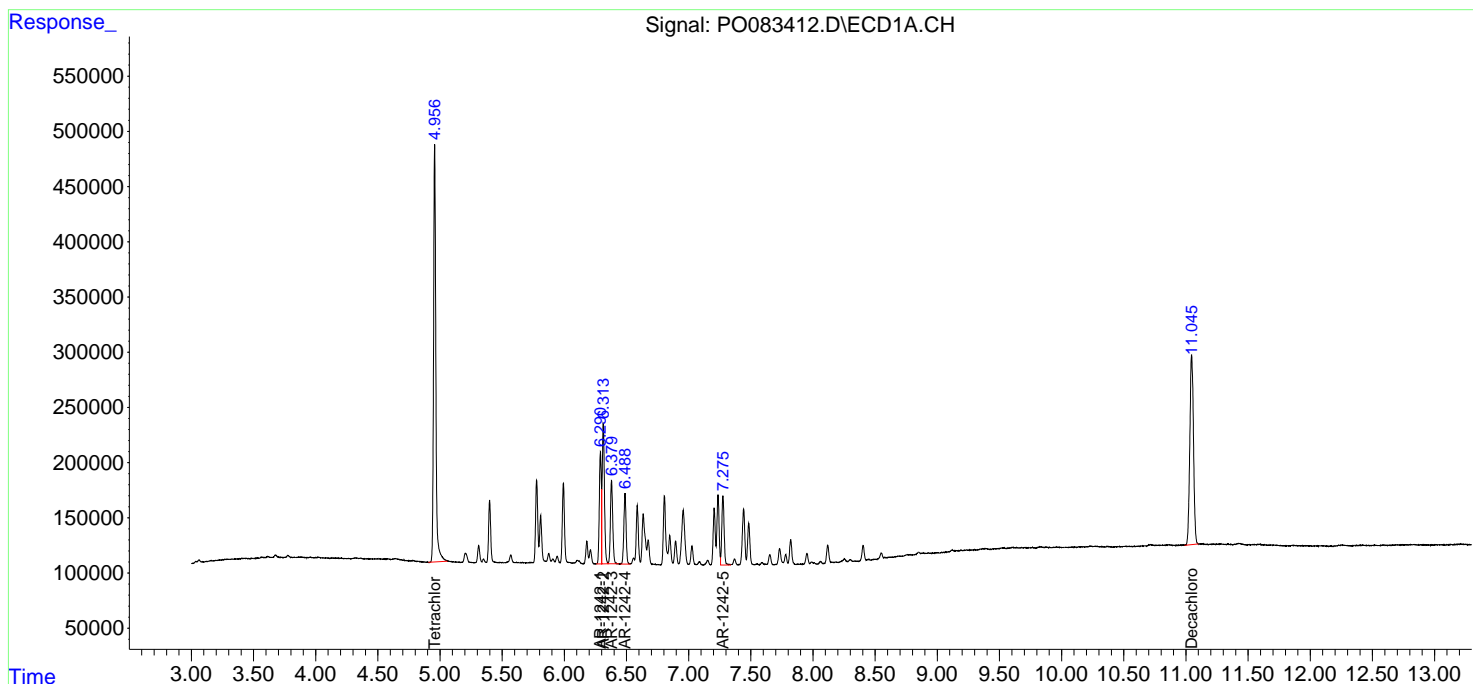
(f)=RT Delta > 1/2 Window (#)=Amounts differ by > 25% (m)=manual int.

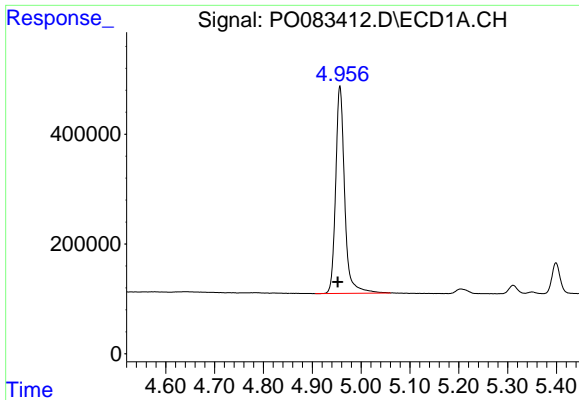
Data Path : Z:\pestpcbsrv\HPCHEM1\ECD_0\Data\PO120321\
 Data File : PO083412.D
 Signal(s) : Signal #1: ECD1A.CH Signal #2: ECD2B.CH
 Acq On : 03 Dec 2021 10:30
 Operator : AJ\MA
 Sample : AR1242CCC500
 Misc :
 ALS Vial : 4 Sample Multiplier: 1

Instrument :
 ECD_0
 ClientSampleId :
 AR1242CCC500

Integration File signal 1: autoint1.e
 Integration File signal 2: autoint2.e
 Quant Time: Dec 03 16:04:30 2021
 Quant Method : Z:\pestpcbsrv\HPCHEM1\ECD_0\methods\PO111921.M
 Quant Title : GC EXTRACTABLES
 QLast Update : Sat Nov 20 02:49:51 2021
 Response via : Initial Calibration
 Integrator: ChemStation 6890 Scale Mode: Small noise peaks clipped

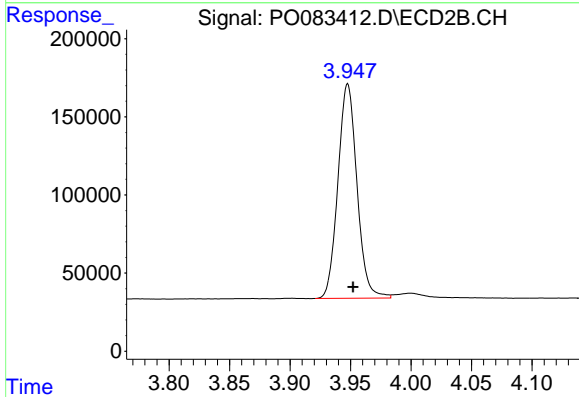
Volume Inj. : 2 µl
 Signal #1 Phase : ZB-MR1 Signal #2 Phase: ZB-MR2
 Signal #1 Info : 30Mx0.32mmx 0.50µ Signal #2 Info : 30M x 0.32mm x 0.25µm



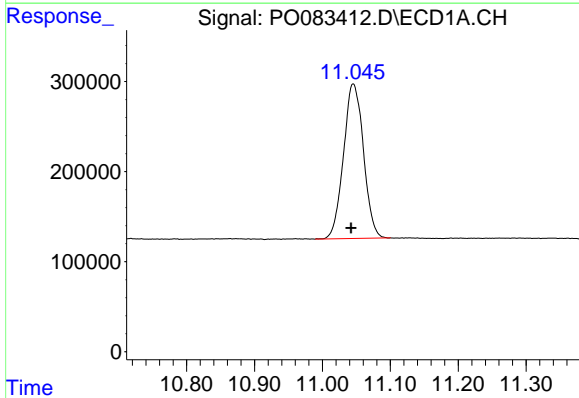


#1 Tetrachloro-m-xylene
 R.T.: 4.957 min
 Delta R.T.: 0.005 min
 Response: 4841060
 Conc: 55.16 ng/ml

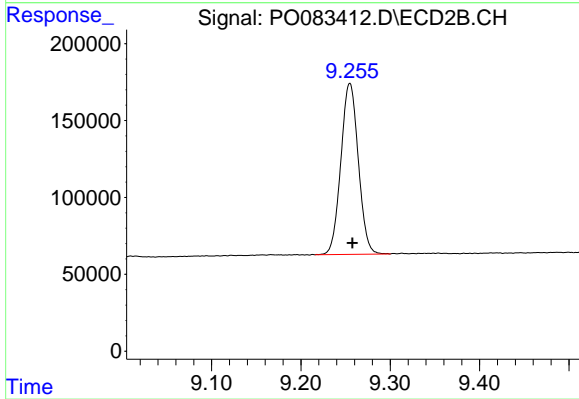
Instrument :
 ECD_O
 ClientSampleId :
 AR1242CCC500



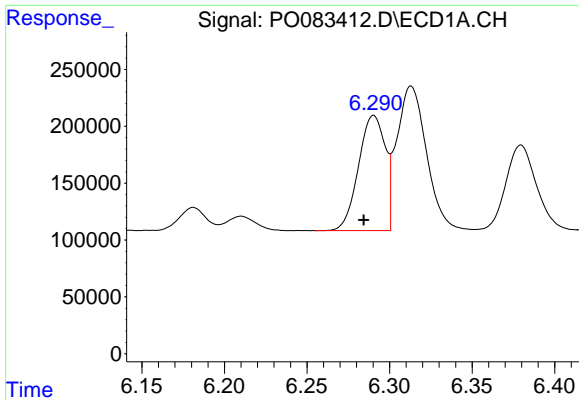
#1 Tetrachloro-m-xylene
 R.T.: 3.948 min
 Delta R.T.: -0.004 min
 Response: 1505489
 Conc: 49.39 ng/ml



#2 Decachlorobiphenyl
 R.T.: 11.045 min
 Delta R.T.: 0.003 min
 Response: 3509294
 Conc: 53.37 ng/ml



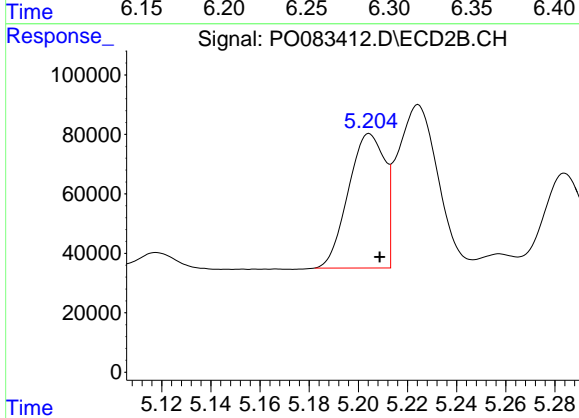
#2 Decachlorobiphenyl
 R.T.: 9.255 min
 Delta R.T.: -0.003 min
 Response: 1510900
 Conc: 50.26 ng/ml



#16 AR-1242-1

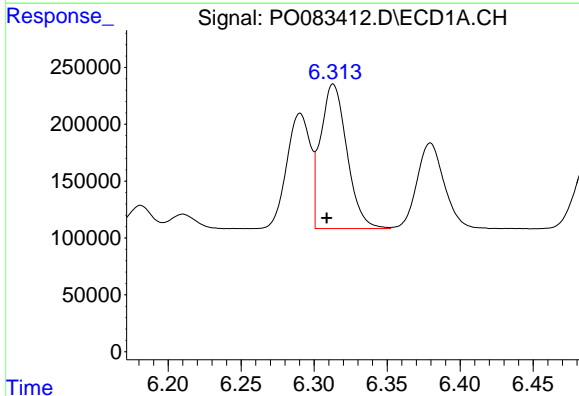
R.T.: 6.290 min
 Delta R.T.: 0.006 min
 Response: 1141970
 Conc: 533.91 ng/ml

Instrument :
 ECD_O
 ClientSampleId :
 AR1242CCC500



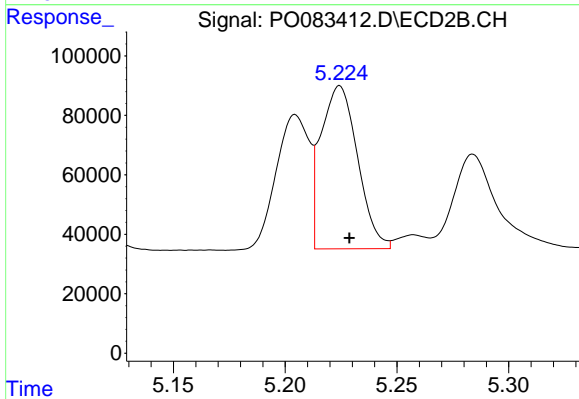
#16 AR-1242-1

R.T.: 5.205 min
 Delta R.T.: -0.004 min
 Response: 463737
 Conc: 477.15 ng/ml



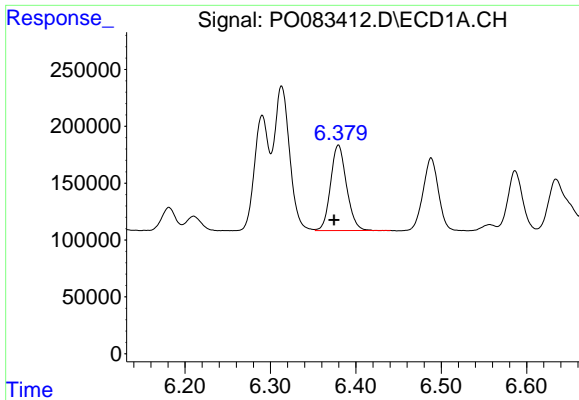
#17 AR-1242-2

R.T.: 6.313 min
 Delta R.T.: 0.005 min
 Response: 1592997
 Conc: 528.49 ng/ml



#17 AR-1242-2

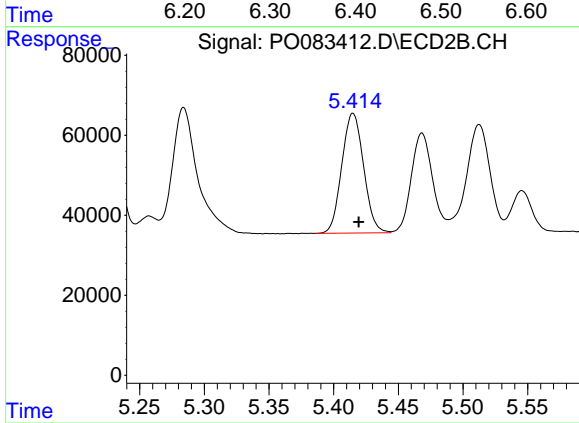
R.T.: 5.224 min
 Delta R.T.: -0.004 min
 Response: 626722
 Conc: 477.73 ng/ml



#18 AR-1242-3

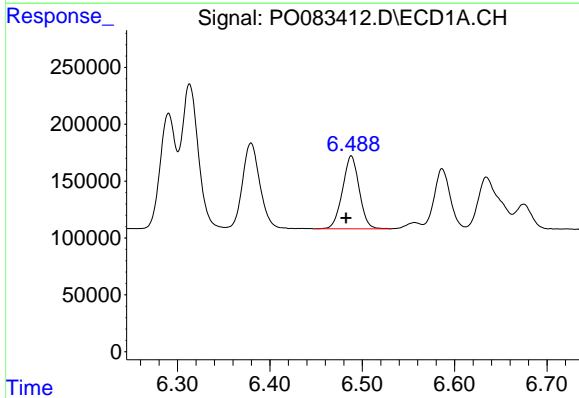
R.T.: 6.380 min
Delta R.T.: 0.005 min
Response: 976157
Conc: 522.75 ng/ml

Instrument :
ECD_O
ClientSampleId :
AR1242CCC500



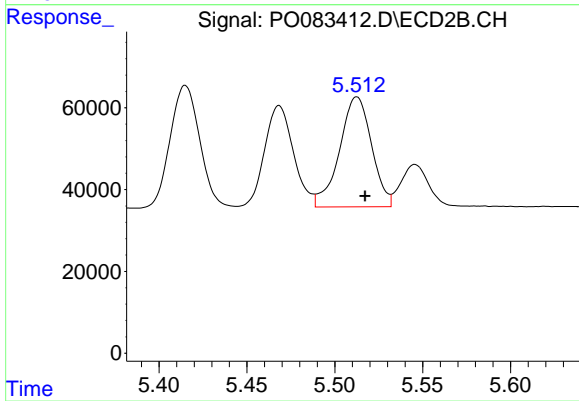
#18 AR-1242-3

R.T.: 5.415 min
Delta R.T.: -0.005 min
Response: 351329
Conc: 484.96 ng/ml



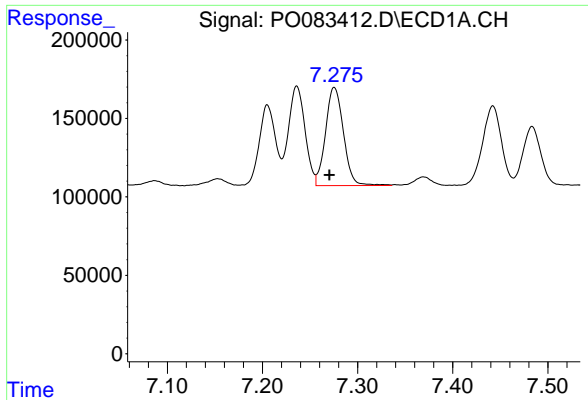
#19 AR-1242-4

R.T.: 6.488 min
Delta R.T.: 0.006 min
Response: 806478
Conc: 534.73 ng/ml



#19 AR-1242-4

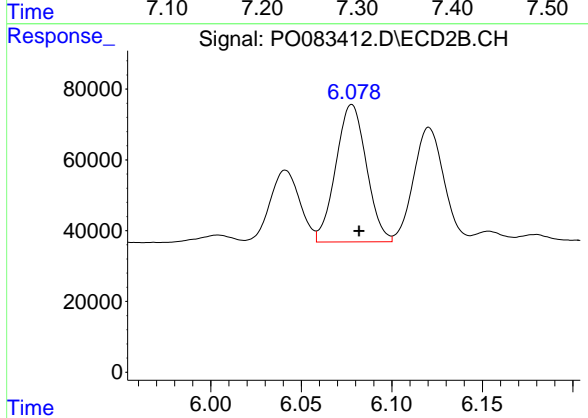
R.T.: 5.513 min
Delta R.T.: -0.005 min
Response: 342048
Conc: 496.86 ng/ml



#20 AR-1242-5

R.T.: 7.276 min
 Delta R.T.: 0.005 min
 Response: 819729
 Conc: 529.88 ng/ml

Instrument :
 ECD_O
 ClientSampleId :
 AR1242CCC500



#20 AR-1242-5

R.T.: 6.078 min
 Delta R.T.: -0.004 min
 Response: 457358
 Conc: 493.81 ng/ml