

Data Path : Z:\pestpcbsrv\HPCHEM1\ECD_O\Data\P0120423\
 Data File : P0100260.D
 Signal(s) : Signal #1: ECD1A.ch Signal #2: ECD2B.ch
 Acq On : 04 Dec 2023 18:14
 Operator : YP/AJ
 Sample : 05600-05
 Misc :
 ALS Vial : 20 Sample Multiplier: 1

Instrument :
 ECD_O
 ClientSampleId :
 TOPSOIL-LKWD-DENALI-3

Integration File signal 1: autoint1.e
 Integration File signal 2: autoint2.e
 Quant Time: Dec 05 00:08:41 2023
 Quant Method : Z:\pestpcbsrv\HPCHEM1\ECD_O\methods\P0112123.M
 Quant Title : GC EXTRACTABLES
 QLast Update : Tue Nov 21 15:58:40 2023
 Response via : Initial Calibration
 Integrator: ChemStation

Volume Inj. : 2 µl
 Signal #1 Phase : ZB-MR1 Signal #2 Phase: ZB-MR2
 Signal #1 Info : 30Mx0.32mmx 0.50µ Signal #2 Info : 30M x 0.32mm x 0.25µm

Compound	RT#1	RT#2	Resp#1	Resp#2	ng/ml	ng/ml

System Monitoring Compounds						
1) SA Tetrachlo...	4.479	3.702	24151415	22400328	14.150	14.935
2) SA Decachlor...	10.361	8.795	6967341	10340305	9.592	9.241
Target Compounds						
3) L1 AR-1016-1	5.663	4.813	444967	84805	10.342	2.686 #
4) L1 AR-1016-2	5.688	4.829	171175	42557	2.644	0.984 #
5) L1 AR-1016-3	5.763	5.007	268173	235138	6.153	10.139 #
6) L1 AR-1016-4	5.865	5.048	177400	93430	5.374	4.557
7) L1 AR-1016-5	6.159	5.250	199698	151064	6.360	5.924
8) L2 AR-1221-1	4.688	3.906	1044816	310508	50.682	16.334 #
9) L2 AR-1221-2	4.791	4.009	342814	1041674	22.697	79.936 #
10) L2 AR-1221-3	4.874	4.083	1840764	1116077	41.020	31.071
11) L3 AR-1232-1	4.874	4.083	1840764	1116077	51.590	38.032 #
12) L3 AR-1232-2	5.409	4.829	200579	42557	11.524	2.146 #
13) L3 AR-1232-3	5.688	5.007	171175	235138	6.041	22.690 #
14) L3 AR-1232-4	5.865	5.122	177400	349411	12.770	35.152 #
15) L3 AR-1232-5	5.946	5.250	479942	151064	39.108	13.987 #
16) L4 AR-1242-1	5.663	4.813	444967	84805	12.844	3.227 #
17) L4 AR-1242-2	5.688	4.829	171175	42557	3.262	1.210 #
18) L4 AR-1242-3	5.763	5.007	268173	235138	7.705	12.279 #
19) L4 AR-1242-4	5.865	5.122	177400	349411	6.748	17.347 #
20) L4 AR-1242-5	6.594	5.633	164392	973688	7.352	41.672 #
21) L5 AR-1248-1	5.663	4.813	444967	84805	17.212	4.242 #
22) L5 AR-1248-2	5.946	5.048	479942	93430	11.735	3.339 #
23) L5 AR-1248-3	6.159	5.122	199698	349411	4.662	12.100 #
24) L5 AR-1248-4	6.573	5.250	340337	151064	9.030	4.607 #
25) L5 AR-1248-5	6.594	5.649	164392	1102399	4.451	36.904 #
26) L6 AR-1254-1	6.544	5.633	1267601	973688	26.324	18.784 #
27) L6 AR-1254-2	6.759	5.772	879060	827636	12.818	17.773 #
28) L6 AR-1254-3	7.128	6.195	923545	1335541	14.497	17.124
29) L6 AR-1254-4	7.418	6.411	258440	253012	6.836	5.929
30) L6 AR-1254-5	7.858	6.830	1206829	1618624	28.195	22.368
31) L7 AR-1260-1	7.292	6.313	409137	799458	7.684	13.835 #
32) L7 AR-1260-2	7.545	6.508	2312899	1181233	43.724	17.785 #
33) L7 AR-1260-3	7.916	6.657	546321	572234	15.316	8.943 #
34) L7 AR-1260-4	8.137	7.130	693503	898673	16.756	17.821
35) L7 AR-1260-5	8.475	7.373	896401	2155112	13.419	19.224 #
36) L8 AR-1262-1	7.858	6.830	1206829	1618624	33.364	42.349 #
37) L8 AR-1262-2	8.475	7.130	896401	898673	10.558	11.914
38) L8 AR-1262-3	8.797	7.660	600539	782814	9.970	13.440 #
39) L8 AR-1262-4	8.892	7.724	806998	1712755	16.739	16.664
40) L8 AR-1262-5	9.565	8.225	244681	761349	9.372	17.473 #
41) L9 AR-1268-1	8.797	7.660	600539	782814	5.441	4.713

Data Path : Z:\pestpcbsrv\HPCHEM1\ECD_0\Data\P0120423\
 Data File : P0100260.D
 Signal(s) : Signal #1: ECD1A.ch Signal #2: ECD2B.ch
 Acq On : 04 Dec 2023 18:14
 Operator : YP/AJ
 Sample : 05600-05
 Misc :
 ALS Vial : 20 Sample Multiplier: 1

Instrument :
 ECD_0
ClientSampleId :
 TOPSOIL-LKWD-DENALI-3

Integration File signal 1: autoint1.e
 Integration File signal 2: autoint2.e
 Quant Time: Dec 05 00:08:41 2023
 Quant Method : Z:\pestpcbsrv\HPCHEM1\ECD_0\methods\P0112123.M
 Quant Title : GC EXTRACTABLES
 QLast Update : Tue Nov 21 15:58:40 2023
 Response via : Initial Calibration
 Integrator: ChemStation

Volume Inj. : 2 µl
 Signal #1 Phase : ZB-MR1 Signal #2 Phase: ZB-MR2
 Signal #1 Info : 30Mx0.32mmx 0.50µ Signal #2 Info : 30M x 0.32mm x 0.25µm

	Compound	RT#1	RT#2	Resp#1	Resp#2	ng/ml	ng/ml
42)	L9 AR-1268-2	8.892	7.724	806998	1712755	8.383	11.221 #
43)	L9 AR-1268-3	9.131	7.933	184776	2559049	2.049	17.857 #
44)	L9 AR-1268-4	9.565	8.225	244681	761349	8.604	16.204 #
45)	L9 AR-1268-5	10.010	8.530	483591	478036	1.922	1.201 #

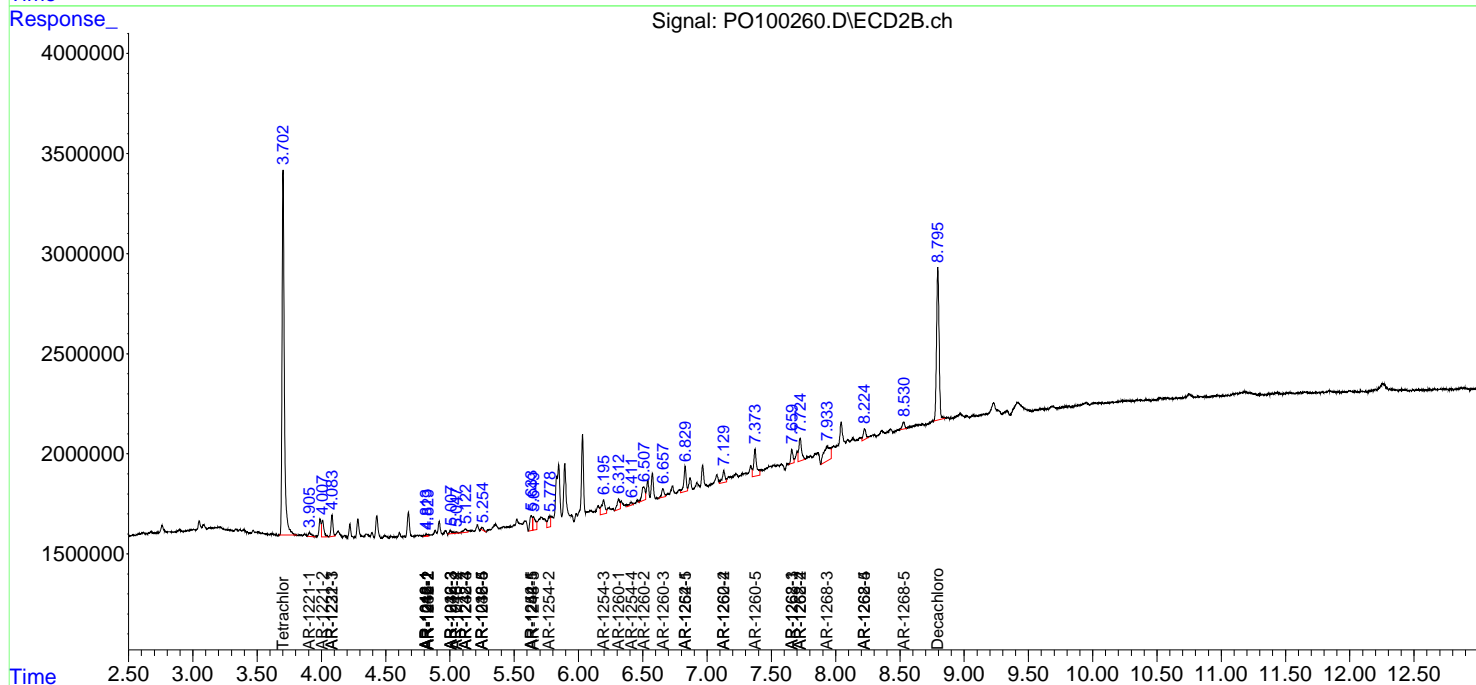
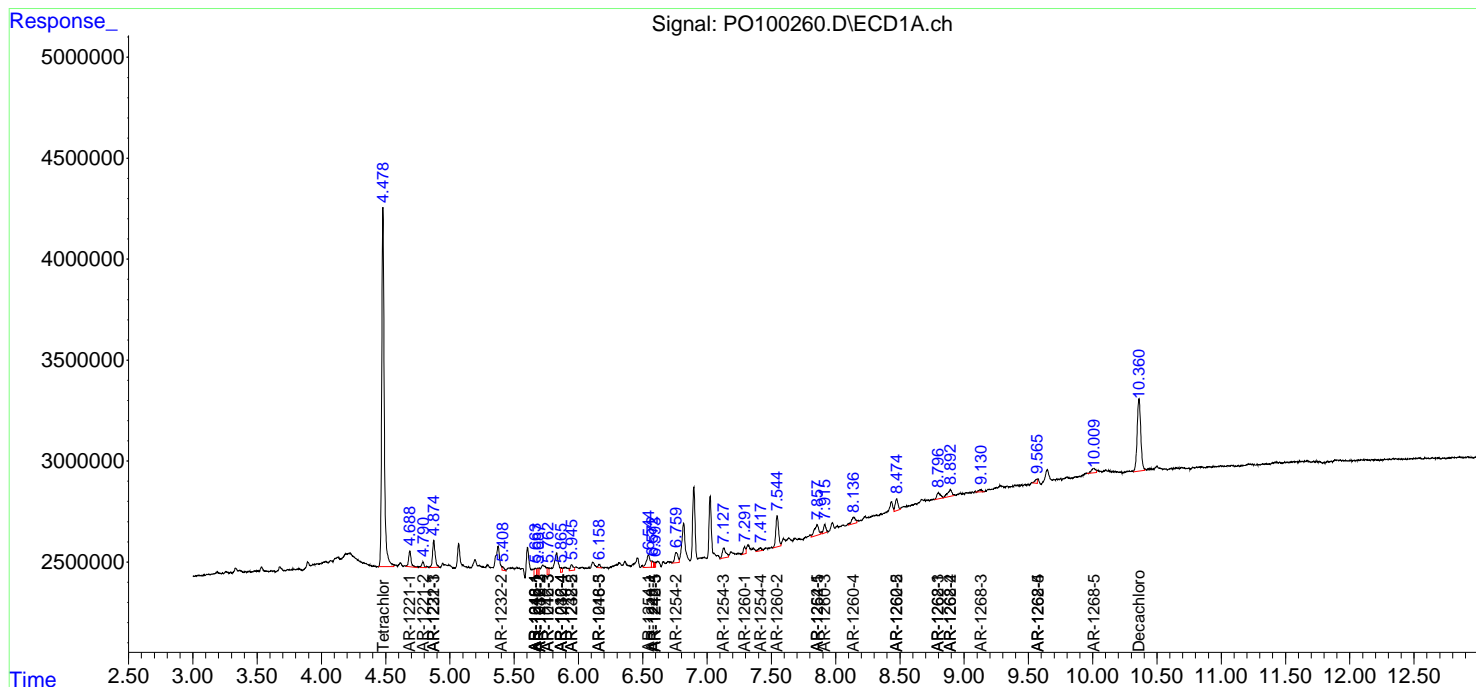
(f)=RT Delta > 1/2 Window (#)=Amounts differ by > 25% (m)=manual int.

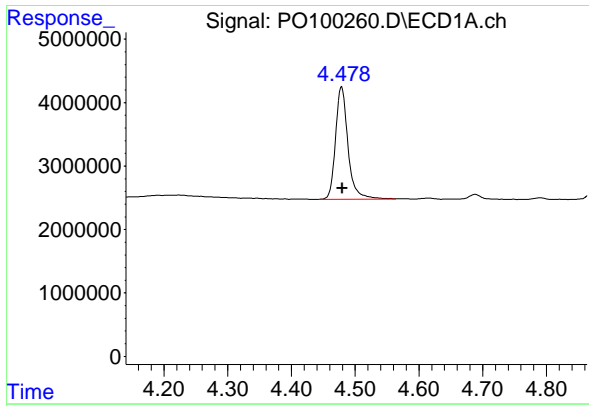
Data Path : Z:\pestpcbsrv\HPCHEM1\ECD_O\Data\PO120423\
 Data File : PO100260.D
 Signal(s) : Signal #1: ECD1A.ch Signal #2: ECD2B.ch
 Acq On : 04 Dec 2023 18:14
 Operator : YP/AJ
 Sample : 05600-05
 Misc :
 ALS Vial : 20 Sample Multiplier: 1

Instrument :
 ECD_O
 ClientSampleId :
 TOPSOIL-LKWD-DENALI-3

Integration File signal 1: autoint1.e
 Integration File signal 2: autoint2.e
 Quant Time: Dec 05 00:08:41 2023
 Quant Method : Z:\pestpcbsrv\HPCHEM1\ECD_O\methods\PO112123.M
 Quant Title : GC EXTRACTABLES
 QLast Update : Tue Nov 21 15:58:40 2023
 Response via : Initial Calibration
 Integrator: ChemStation

Volume Inj. : 2 µl
 Signal #1 Phase : ZB-MR1 Signal #2 Phase: ZB-MR2
 Signal #1 Info : 30Mx0.32mmx 0.50µ Signal #2 Info : 30M x 0.32mm x 0.25µm

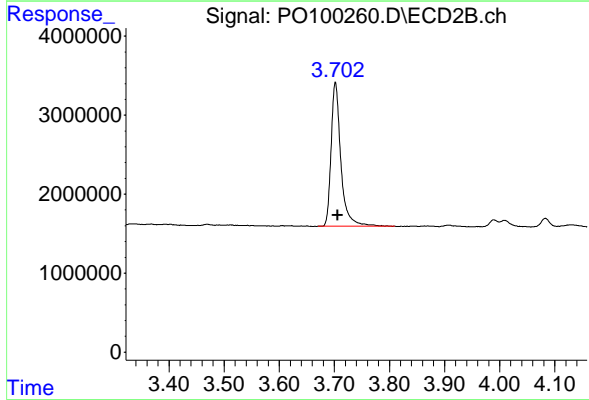




#1 Tetrachloro-m-xylene

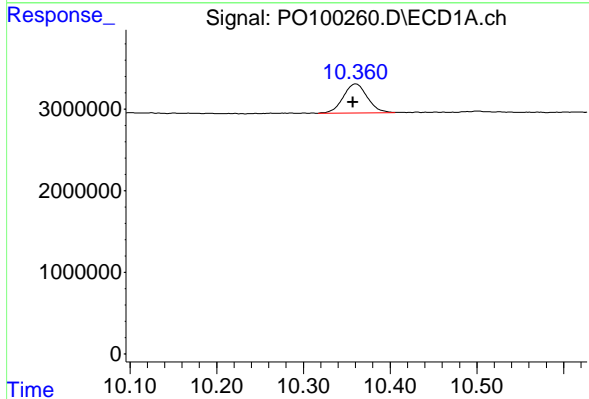
R.T.: 4.479 min
 Delta R.T.: -0.001 min
 Response: 24151415
 Conc: 14.15 ng/ml

Instrument :
 ECD_O
 ClientSampleId :
 TOPSOIL-LKWD-DENALI-3



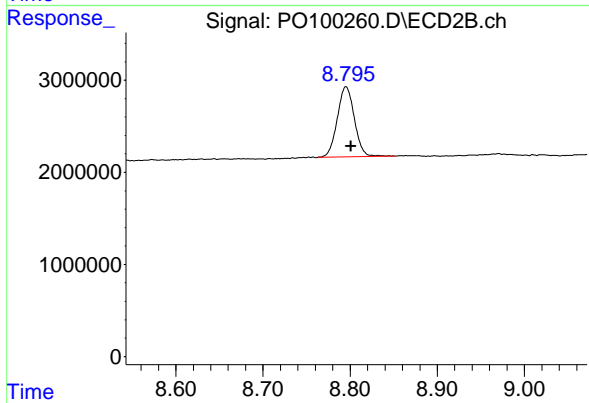
#1 Tetrachloro-m-xylene

R.T.: 3.702 min
 Delta R.T.: -0.004 min
 Response: 22400328
 Conc: 14.93 ng/ml



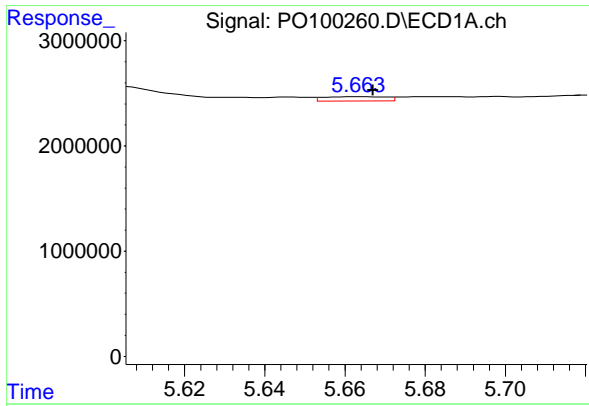
#2 Decachlorobiphenyl

R.T.: 10.361 min
 Delta R.T.: 0.004 min
 Response: 6967341
 Conc: 9.59 ng/ml



#2 Decachlorobiphenyl

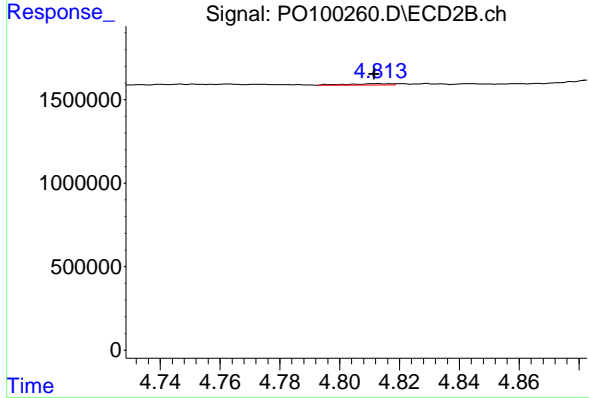
R.T.: 8.795 min
 Delta R.T.: -0.006 min
 Response: 10340305
 Conc: 9.24 ng/ml



#3 AR-1016-1

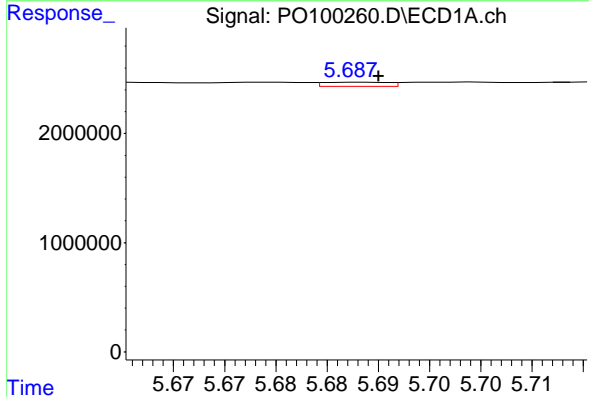
R.T.: 5.663 min
 Delta R.T.: -0.004 min
 Response: 444967
 Conc: 10.34 ng/ml

Instrument : ECD_O
 ClientSampleId : TOPSOIL-LKWD-DENALI-3



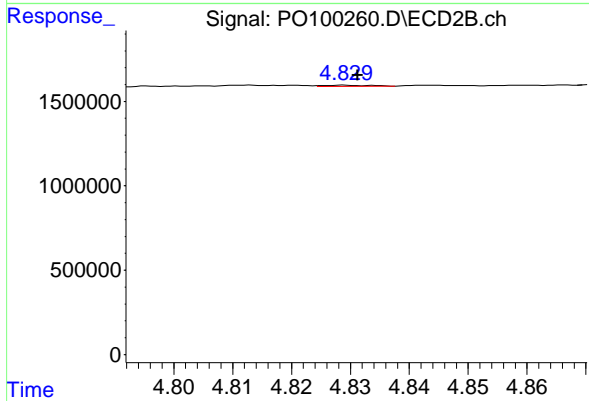
#3 AR-1016-1

R.T.: 4.813 min
 Delta R.T.: 0.001 min
 Response: 84805
 Conc: 2.69 ng/ml



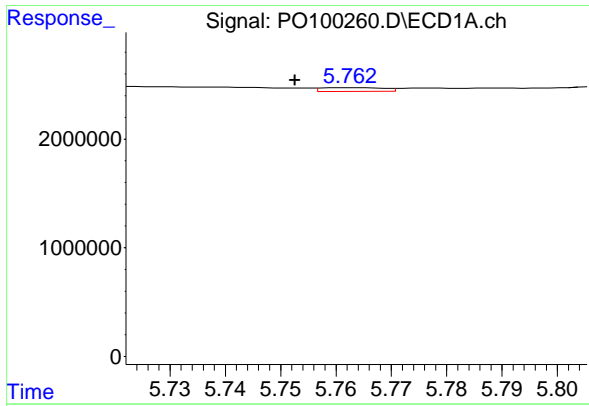
#4 AR-1016-2

R.T.: 5.688 min
 Delta R.T.: -0.002 min
 Response: 171175
 Conc: 2.64 ng/ml



#4 AR-1016-2

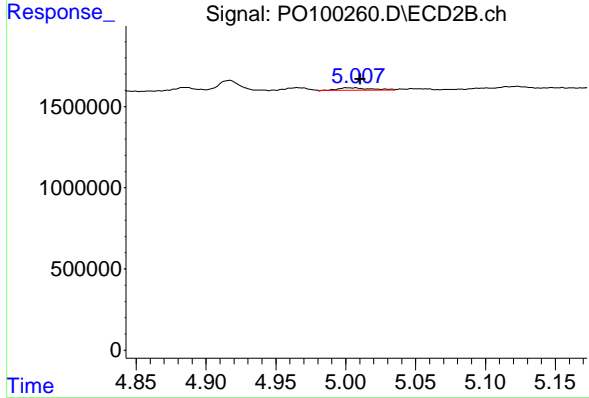
R.T.: 4.829 min
 Delta R.T.: -0.002 min
 Response: 42557
 Conc: 0.98 ng/ml



#5 AR-1016-3

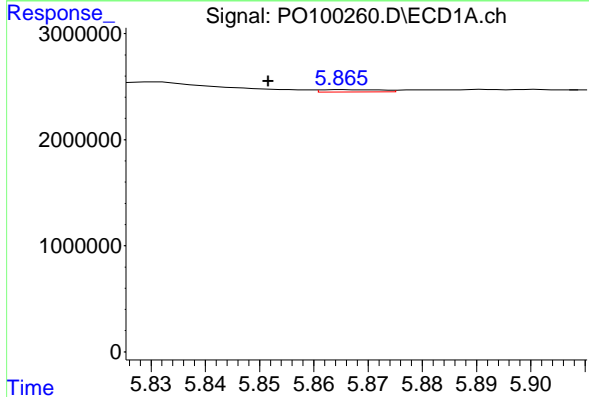
R.T.: 5.763 min
 Delta R.T.: 0.010 min
 Response: 268173
 Conc: 6.15 ng/ml

Instrument :
 ECD_O
 ClientSampleId :
 TOPSOIL-LKWD-DENALI-3



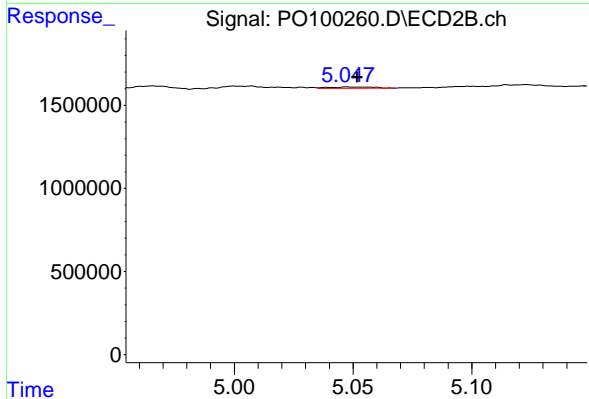
#5 AR-1016-3

R.T.: 5.007 min
 Delta R.T.: -0.004 min
 Response: 235138
 Conc: 10.14 ng/ml



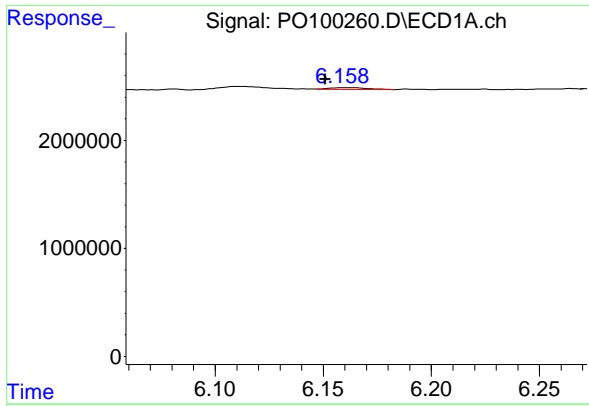
#6 AR-1016-4

R.T.: 5.865 min
 Delta R.T.: 0.013 min
 Response: 177400
 Conc: 5.37 ng/ml



#6 AR-1016-4

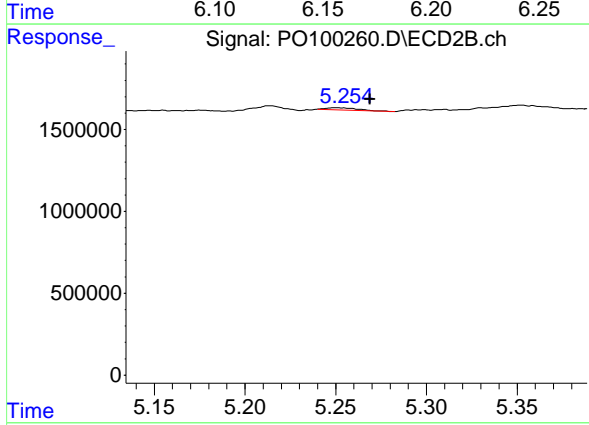
R.T.: 5.048 min
 Delta R.T.: -0.004 min
 Response: 93430
 Conc: 4.56 ng/ml



#7 AR-1016-5

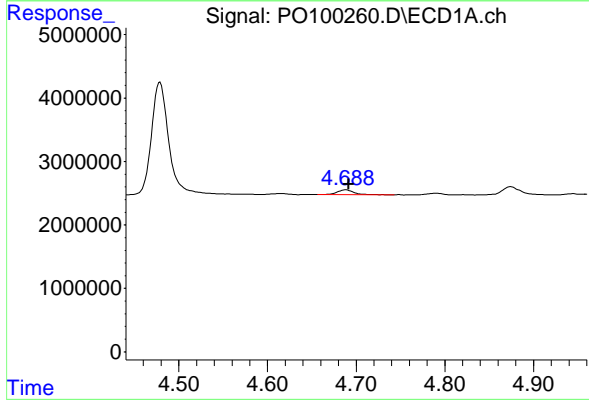
R.T.: 6.159 min
 Delta R.T.: 0.008 min
 Response: 199698
 Conc: 6.36 ng/ml

Instrument :
 ECD_O
 ClientSampleId :
 TOPSOIL-LKWD-DENALI-3



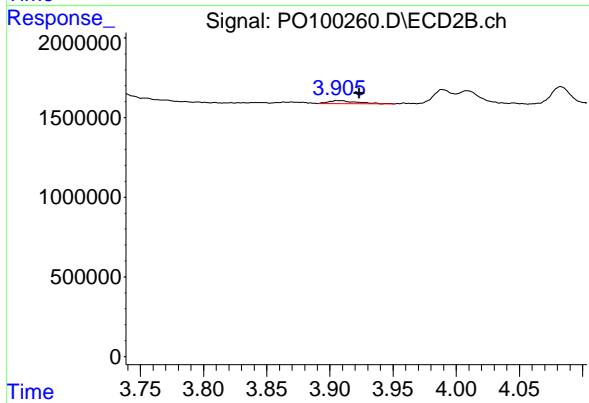
#7 AR-1016-5

R.T.: 5.250 min
 Delta R.T.: -0.019 min
 Response: 151064
 Conc: 5.92 ng/ml



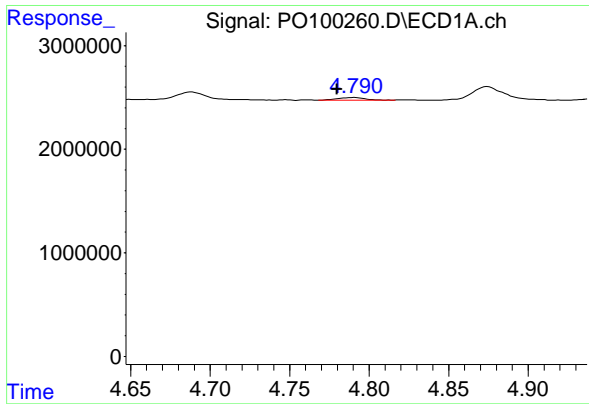
#8 AR-1221-1

R.T.: 4.688 min
 Delta R.T.: -0.003 min
 Response: 1044816
 Conc: 50.68 ng/ml



#8 AR-1221-1

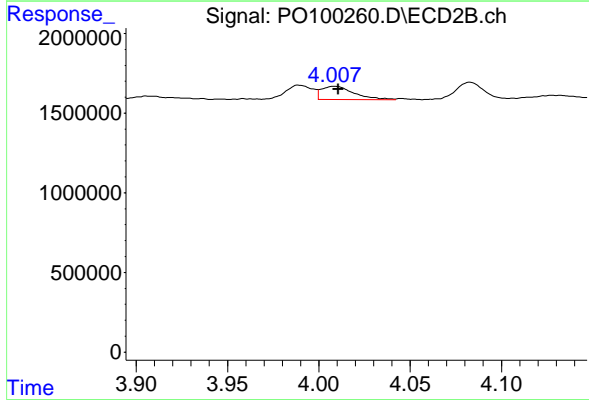
R.T.: 3.906 min
 Delta R.T.: -0.017 min
 Response: 310508
 Conc: 16.33 ng/ml



#9 AR-1221-2

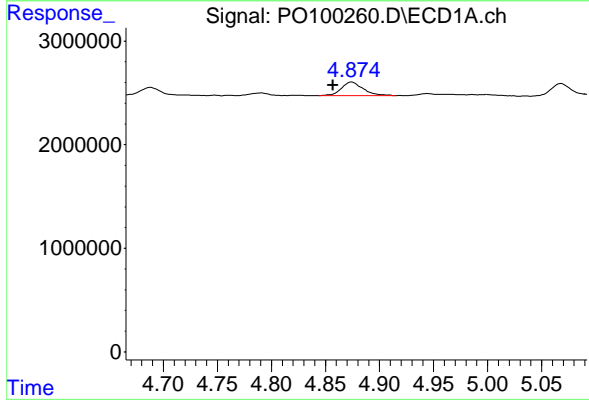
R.T.: 4.791 min
 Delta R.T.: 0.011 min
 Response: 342814
 Conc: 22.70 ng/ml

Instrument :
 ECD_O
 ClientSampleId :
 TOPSOIL-LKWD-DENALI-3



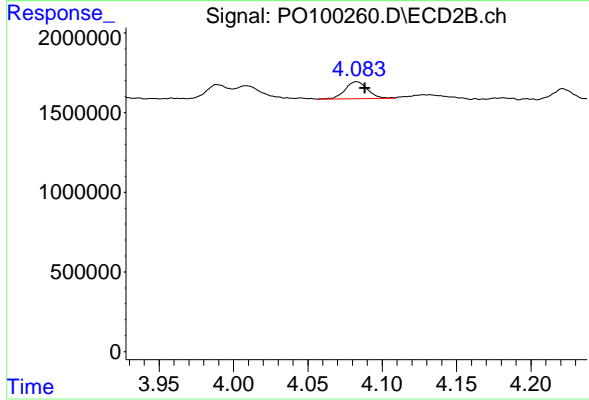
#9 AR-1221-2

R.T.: 4.009 min
 Delta R.T.: -0.002 min
 Response: 1041674
 Conc: 79.94 ng/ml



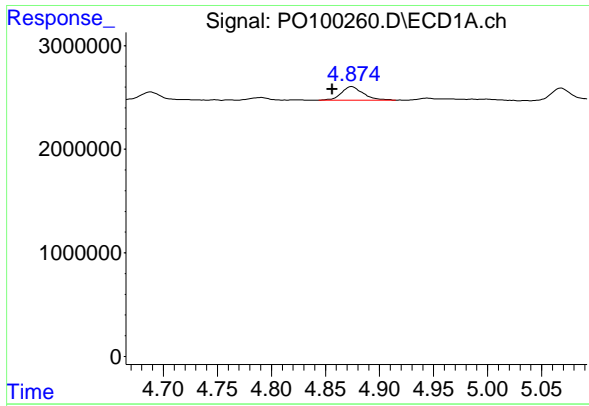
#10 AR-1221-3

R.T.: 4.874 min
 Delta R.T.: 0.017 min
 Response: 1840764
 Conc: 41.02 ng/ml



#10 AR-1221-3

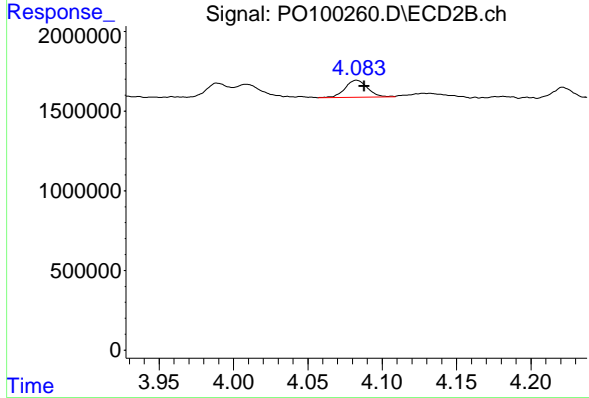
R.T.: 4.083 min
 Delta R.T.: -0.006 min
 Response: 1116077
 Conc: 31.07 ng/ml



#11 AR-1232-1

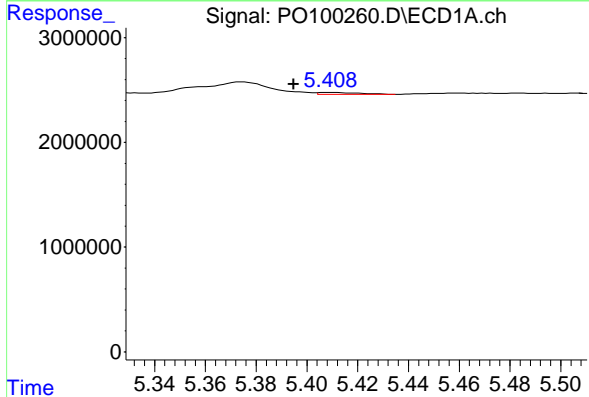
R.T.: 4.874 min
 Delta R.T.: 0.018 min
 Response: 1840764
 Conc: 51.59 ng/ml

Instrument :
 ECD_O
 ClientSampleId :
 TOPSOIL-LKWD-DENALI-3



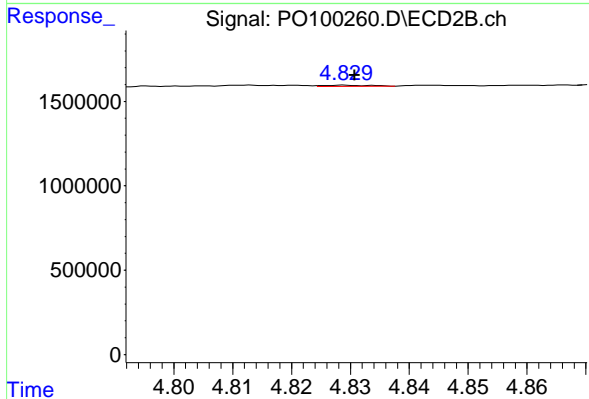
#11 AR-1232-1

R.T.: 4.083 min
 Delta R.T.: -0.005 min
 Response: 1116077
 Conc: 38.03 ng/ml



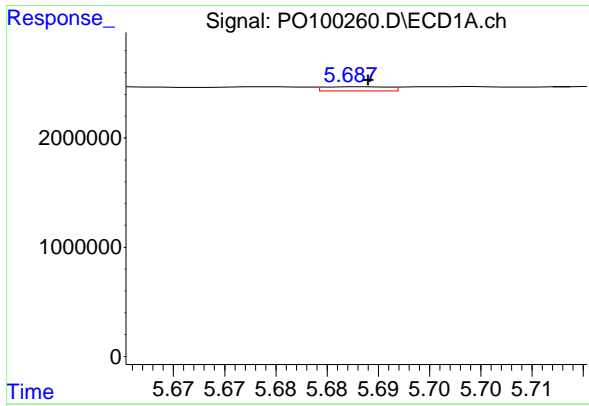
#12 AR-1232-2

R.T.: 5.409 min
 Delta R.T.: 0.014 min
 Response: 200579
 Conc: 11.52 ng/ml



#12 AR-1232-2

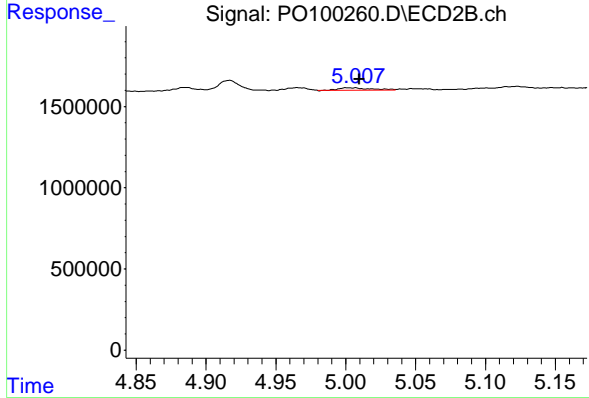
R.T.: 4.829 min
 Delta R.T.: -0.002 min
 Response: 42557
 Conc: 2.15 ng/ml



#13 AR-1232-3

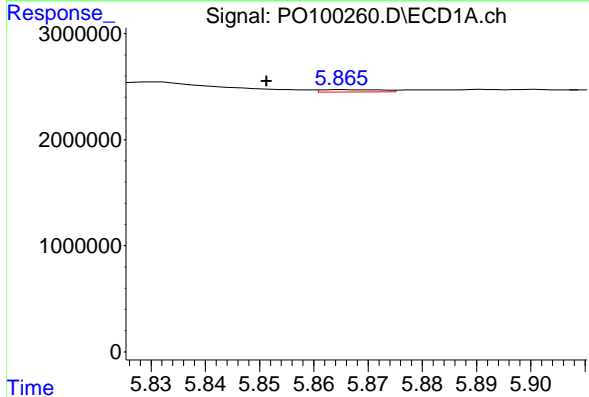
R.T.: 5.688 min
 Delta R.T.: -0.001 min
 Response: 171175
 Conc: 6.04 ng/ml

Instrument :
 ECD_O
 ClientSampleId :
 TOPSOIL-LKWD-DENALI-3



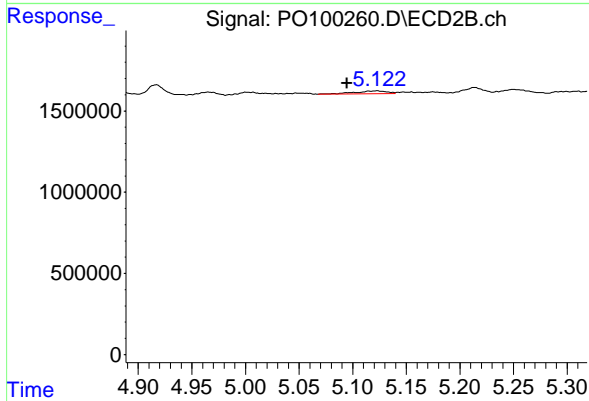
#13 AR-1232-3

R.T.: 5.007 min
 Delta R.T.: -0.003 min
 Response: 235138
 Conc: 22.69 ng/ml



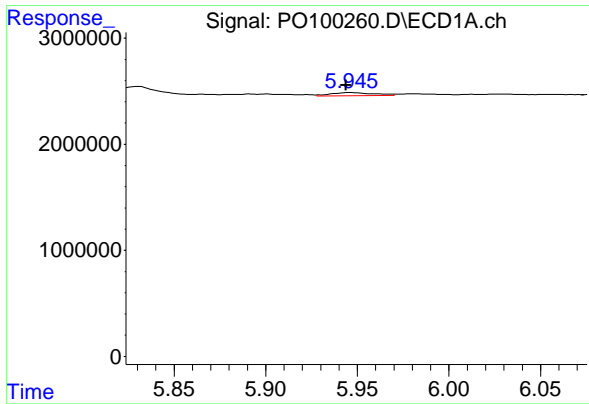
#14 AR-1232-4

R.T.: 5.865 min
 Delta R.T.: 0.013 min
 Response: 177400
 Conc: 12.77 ng/ml



#14 AR-1232-4

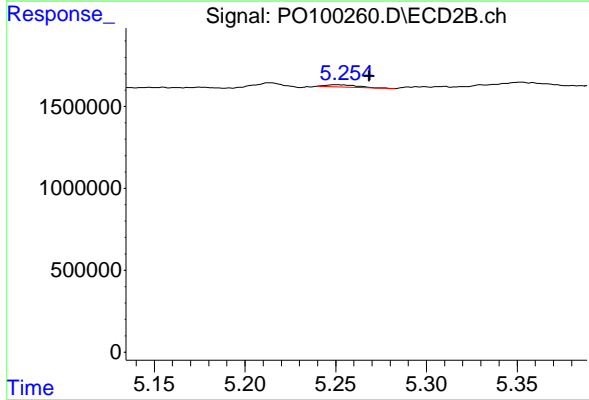
R.T.: 5.122 min
 Delta R.T.: 0.028 min
 Response: 349411
 Conc: 35.15 ng/ml



#15 AR-1232-5

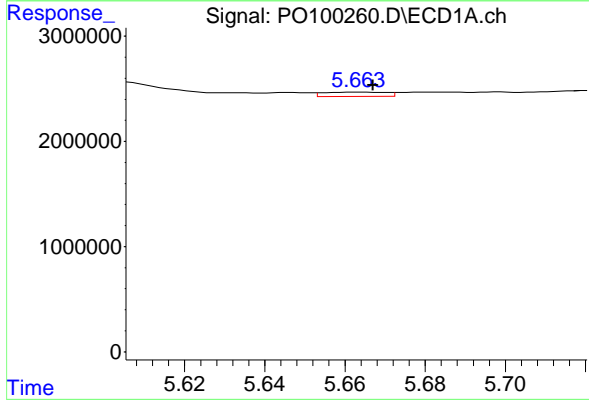
R.T.: 5.946 min
 Delta R.T.: 0.003 min
 Response: 479942
 Conc: 39.11 ng/ml

Instrument :
 ECD_O
 ClientSampleId :
 TOPSOIL-LKWD-DENALI-3



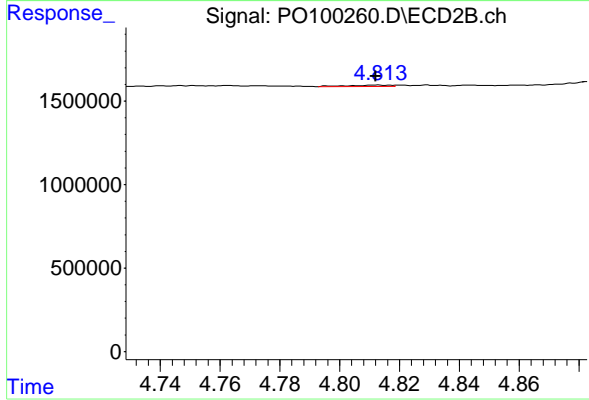
#15 AR-1232-5

R.T.: 5.250 min
 Delta R.T.: -0.018 min
 Response: 151064
 Conc: 13.99 ng/ml



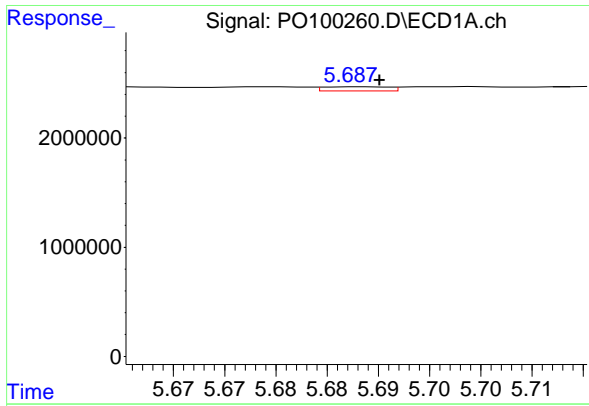
#16 AR-1242-1

R.T.: 5.663 min
 Delta R.T.: -0.004 min
 Response: 444967
 Conc: 12.84 ng/ml



#16 AR-1242-1

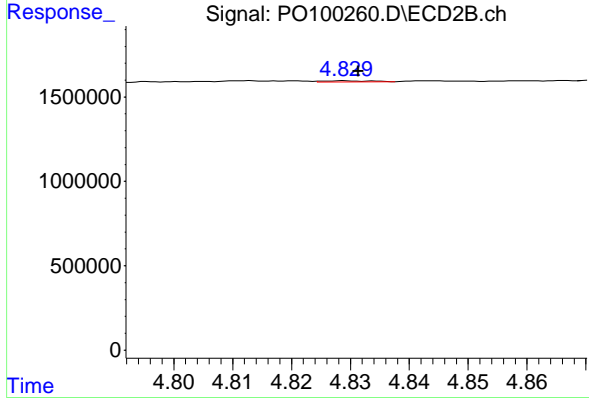
R.T.: 4.813 min
 Delta R.T.: 0.000 min
 Response: 84805
 Conc: 3.23 ng/ml



#17 AR-1242-2

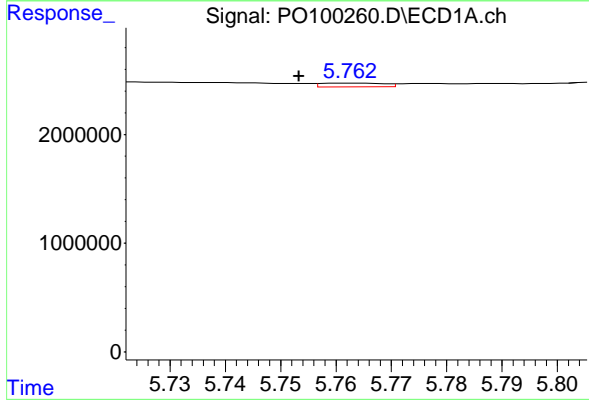
R.T.: 5.688 min
 Delta R.T.: -0.002 min
 Response: 171175
 Conc: 3.26 ng/ml

Instrument :
 ECD_O
 ClientSampleId :
 TOPSOIL-LKWD-DENALI-3



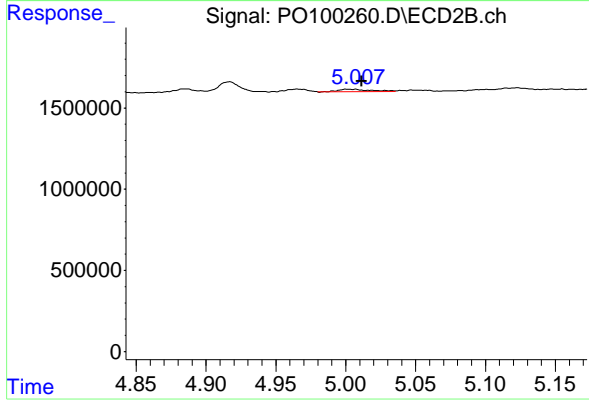
#17 AR-1242-2

R.T.: 4.829 min
 Delta R.T.: -0.003 min
 Response: 42557
 Conc: 1.21 ng/ml



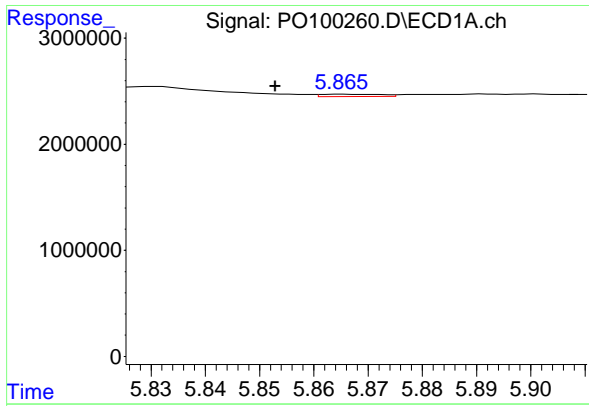
#18 AR-1242-3

R.T.: 5.763 min
 Delta R.T.: 0.010 min
 Response: 268173
 Conc: 7.71 ng/ml



#18 AR-1242-3

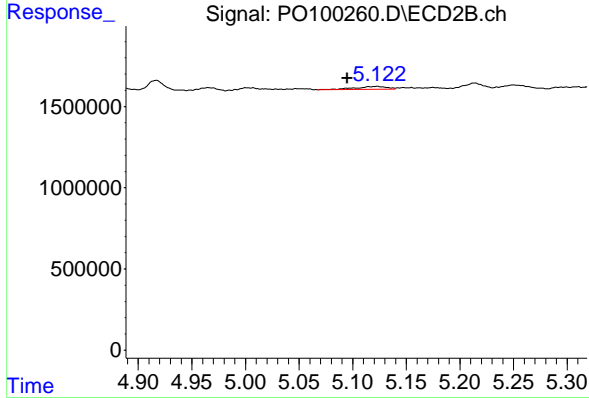
R.T.: 5.007 min
 Delta R.T.: -0.005 min
 Response: 235138
 Conc: 12.28 ng/ml



#19 AR-1242-4

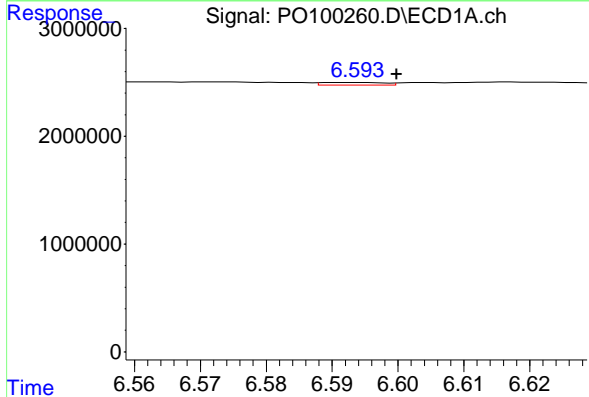
R.T.: 5.865 min
 Delta R.T.: 0.012 min
 Response: 177400
 Conc: 6.75 ng/ml

Instrument :
 ECD_O
 ClientSampleId :
 TOPSOIL-LKWD-DENALI-3



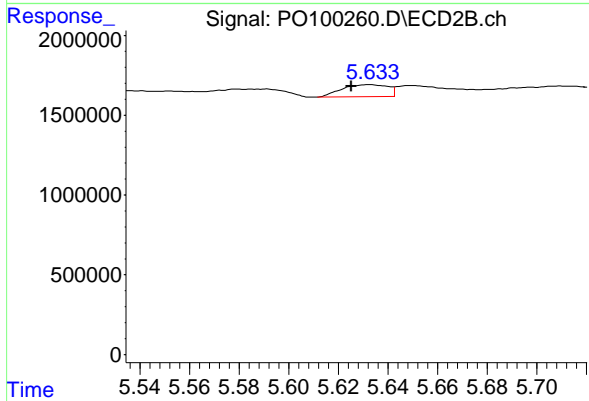
#19 AR-1242-4

R.T.: 5.122 min
 Delta R.T.: 0.028 min
 Response: 349411
 Conc: 17.35 ng/ml



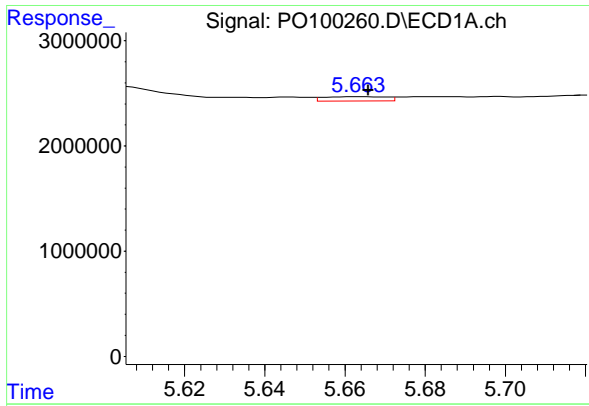
#20 AR-1242-5

R.T.: 6.594 min
 Delta R.T.: -0.006 min
 Response: 164392
 Conc: 7.35 ng/ml



#20 AR-1242-5

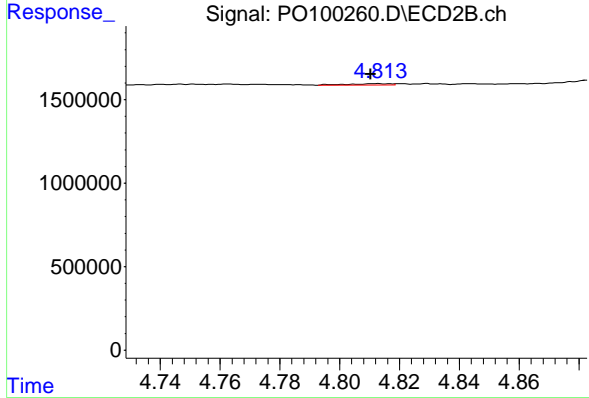
R.T.: 5.633 min
 Delta R.T.: 0.007 min
 Response: 973688
 Conc: 41.67 ng/ml



#21 AR-1248-1

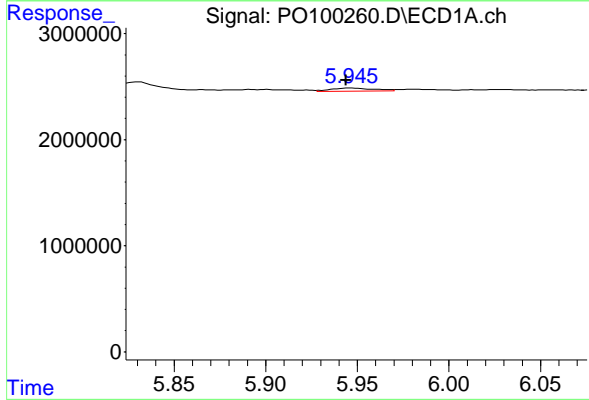
R.T.: 5.663 min
 Delta R.T.: -0.002 min
 Response: 444967
 Conc: 17.21 ng/ml

Instrument : ECD_O
 ClientSampleId : TOPSOIL-LKWD-DENALI-3



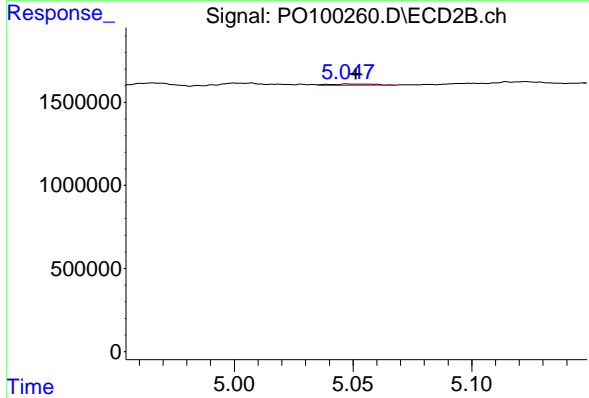
#21 AR-1248-1

R.T.: 4.813 min
 Delta R.T.: 0.002 min
 Response: 84805
 Conc: 4.24 ng/ml



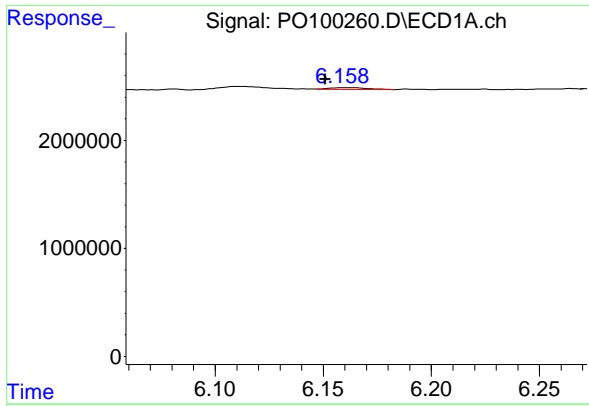
#22 AR-1248-2

R.T.: 5.946 min
 Delta R.T.: 0.003 min
 Response: 479942
 Conc: 11.74 ng/ml



#22 AR-1248-2

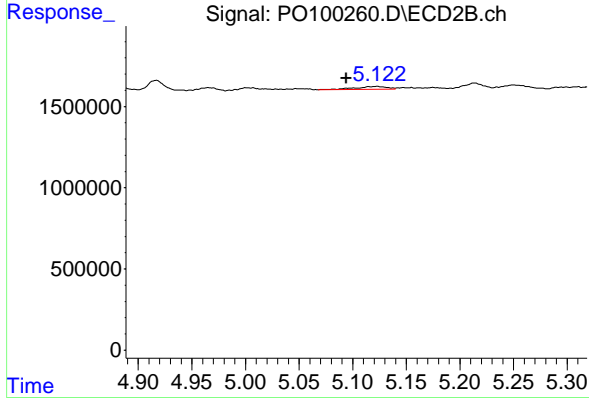
R.T.: 5.048 min
 Delta R.T.: -0.003 min
 Response: 93430
 Conc: 3.34 ng/ml



#23 AR-1248-3

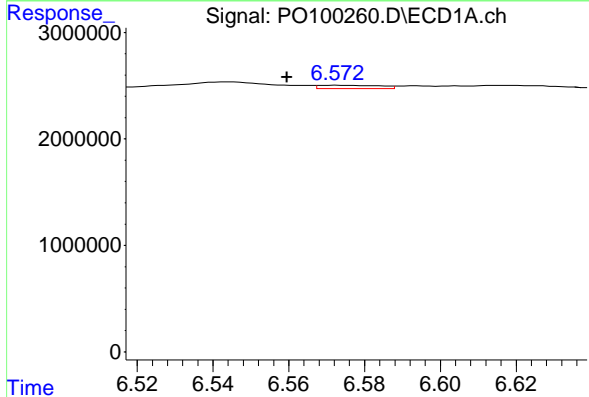
R.T.: 6.159 min
 Delta R.T.: 0.008 min
 Response: 199698
 Conc: 4.66 ng/ml

Instrument :
 ECD_O
 ClientSampleId :
 TOPSOIL-LKWD-DENALI-3



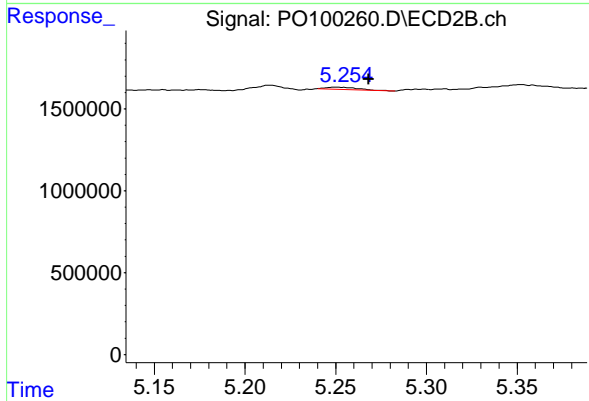
#23 AR-1248-3

R.T.: 5.122 min
 Delta R.T.: 0.029 min
 Response: 349411
 Conc: 12.10 ng/ml



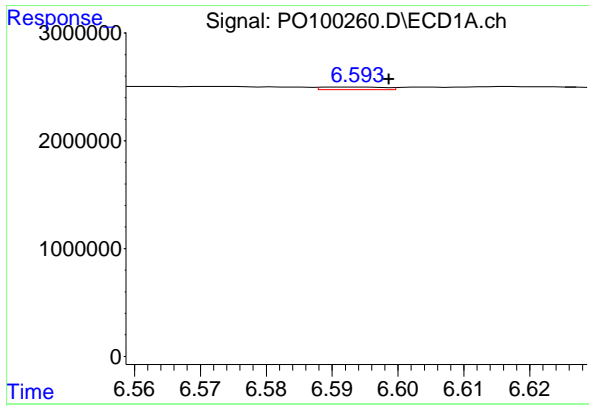
#24 AR-1248-4

R.T.: 6.573 min
 Delta R.T.: 0.013 min
 Response: 340337
 Conc: 9.03 ng/ml



#24 AR-1248-4

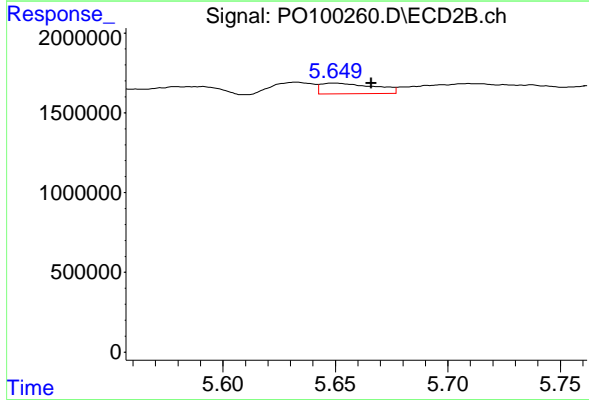
R.T.: 5.250 min
 Delta R.T.: -0.018 min
 Response: 151064
 Conc: 4.61 ng/ml



#25 AR-1248-5

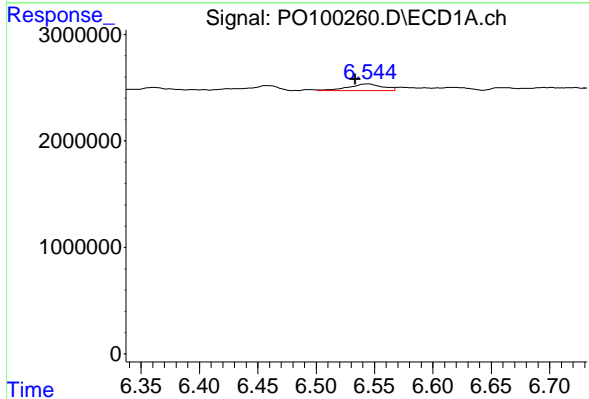
R.T.: 6.594 min
 Delta R.T.: -0.005 min
 Response: 164392
 Conc: 4.45 ng/ml

Instrument :
 ECD_O
 ClientSampleId :
 TOPSOIL-LKWD-DENALI-3



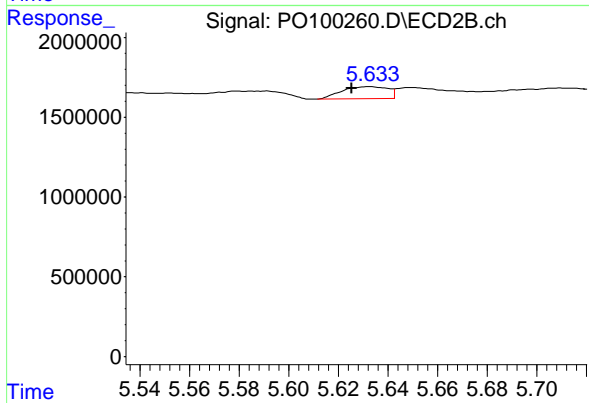
#25 AR-1248-5

R.T.: 5.649 min
 Delta R.T.: -0.016 min
 Response: 1102399
 Conc: 36.90 ng/ml



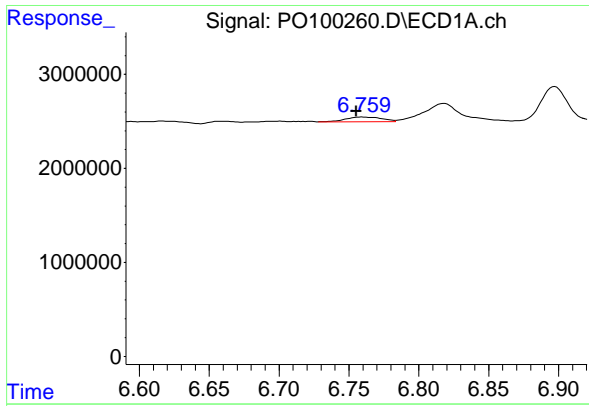
#26 AR-1254-1

R.T.: 6.544 min
 Delta R.T.: 0.011 min
 Response: 1267601
 Conc: 26.32 ng/ml



#26 AR-1254-1

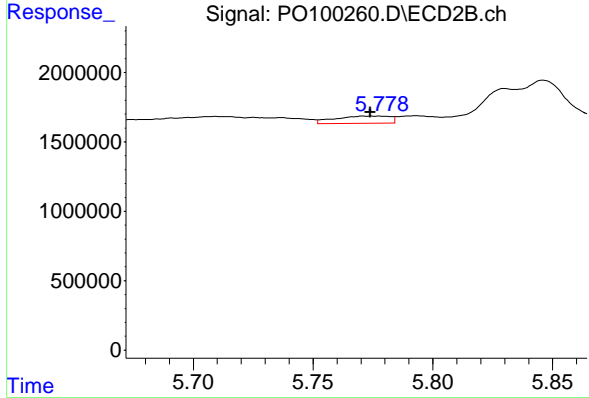
R.T.: 5.633 min
 Delta R.T.: 0.007 min
 Response: 973688
 Conc: 18.78 ng/ml



#27 AR-1254-2

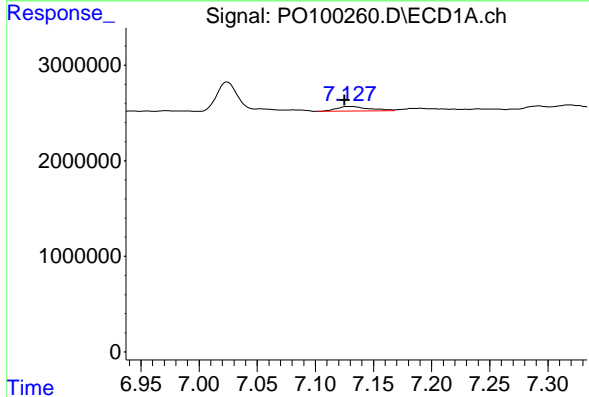
R.T.: 6.759 min
 Delta R.T.: 0.004 min
 Response: 879060
 Conc: 12.82 ng/ml

Instrument :
 ECD_O
 ClientSampleId :
 TOPSOIL-LKWD-DENALI-3



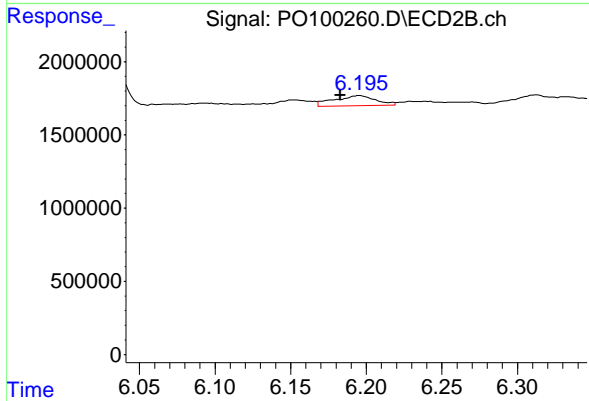
#27 AR-1254-2

R.T.: 5.772 min
 Delta R.T.: -0.002 min
 Response: 827636
 Conc: 17.77 ng/ml



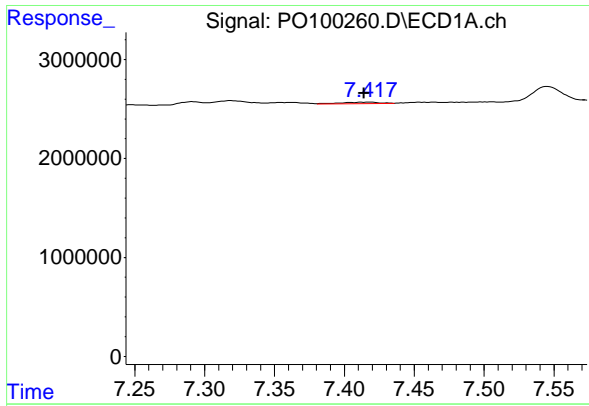
#28 AR-1254-3

R.T.: 7.128 min
 Delta R.T.: 0.003 min
 Response: 923545
 Conc: 14.50 ng/ml



#28 AR-1254-3

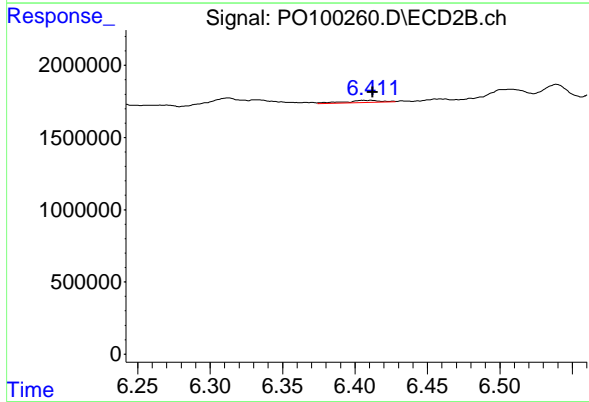
R.T.: 6.195 min
 Delta R.T.: 0.012 min
 Response: 1335541
 Conc: 17.12 ng/ml



#29 AR-1254-4

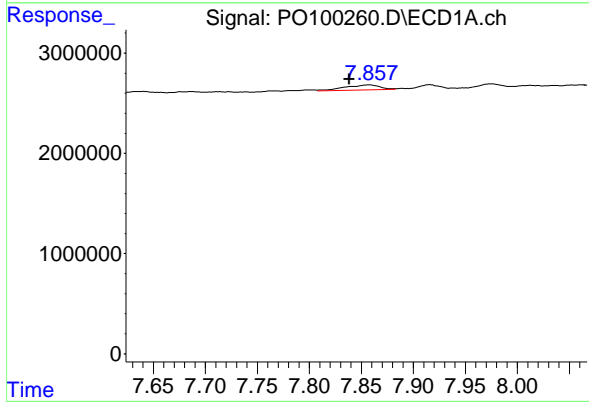
R.T.: 7.418 min
 Delta R.T.: 0.004 min
 Response: 258440
 Conc: 6.84 ng/ml

Instrument :
 ECD_O
 ClientSampleId :
 TOPSOIL-LKWD-DENALI-3



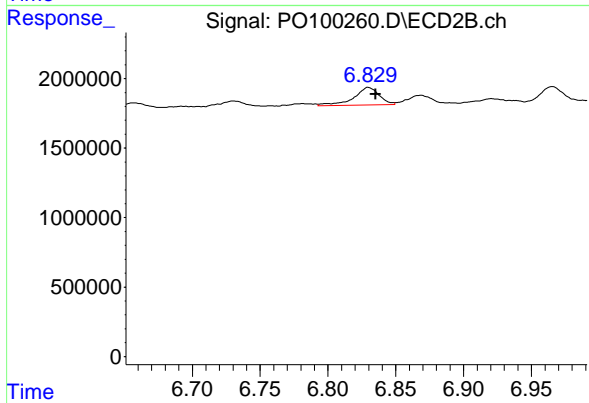
#29 AR-1254-4

R.T.: 6.411 min
 Delta R.T.: -0.001 min
 Response: 253012
 Conc: 5.93 ng/ml



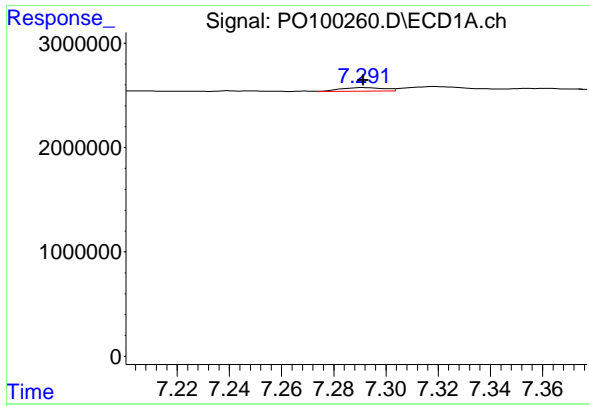
#30 AR-1254-5

R.T.: 7.858 min
 Delta R.T.: 0.020 min
 Response: 1206829
 Conc: 28.20 ng/ml



#30 AR-1254-5

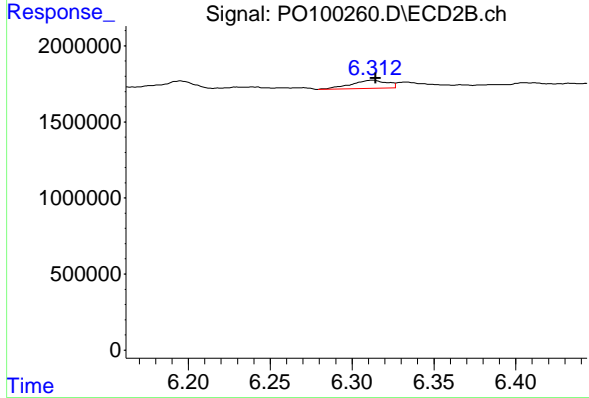
R.T.: 6.830 min
 Delta R.T.: -0.005 min
 Response: 1618624
 Conc: 22.37 ng/ml



#31 AR-1260-1

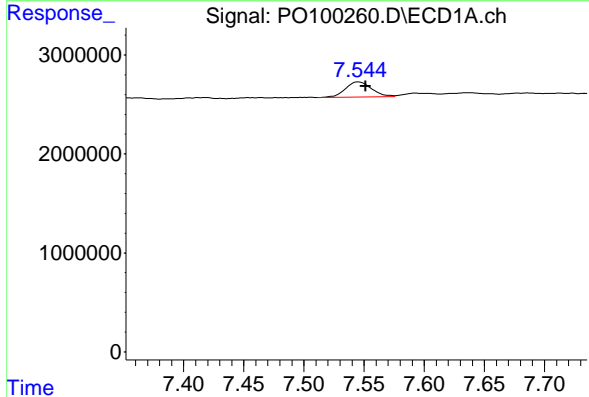
R.T.: 7.292 min
 Delta R.T.: 0.000 min
 Response: 409137
 Conc: 7.68 ng/ml

Instrument : ECD_O
 ClientSampleId : TOPSOIL-LKWD-DENALI-3



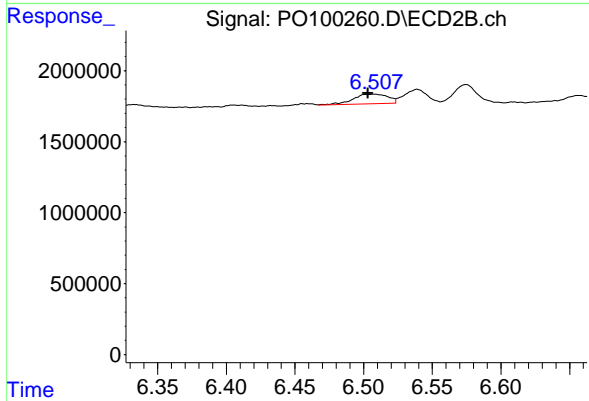
#31 AR-1260-1

R.T.: 6.313 min
 Delta R.T.: -0.002 min
 Response: 799458
 Conc: 13.84 ng/ml



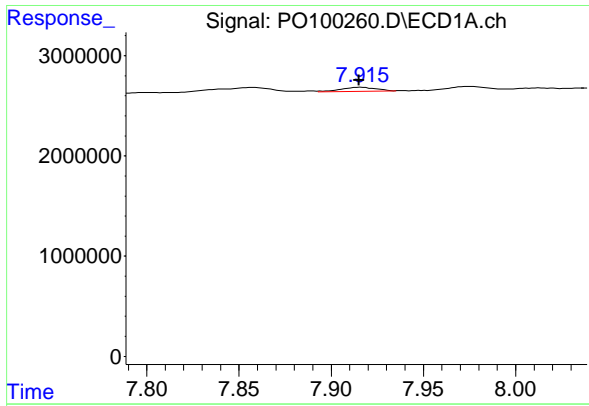
#32 AR-1260-2

R.T.: 7.545 min
 Delta R.T.: -0.006 min
 Response: 2312899
 Conc: 43.72 ng/ml



#32 AR-1260-2

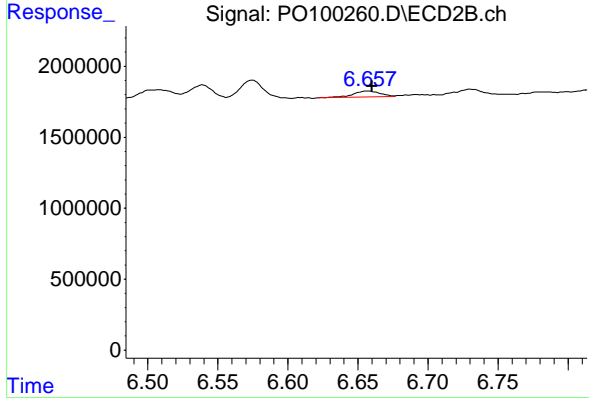
R.T.: 6.508 min
 Delta R.T.: 0.005 min
 Response: 1181233
 Conc: 17.79 ng/ml



#33 AR-1260-3

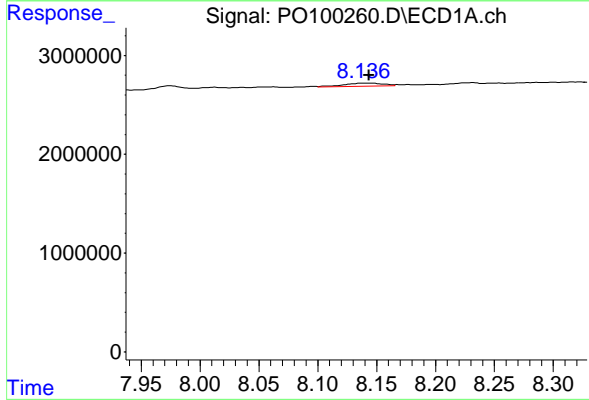
R.T.: 7.916 min
 Delta R.T.: 0.001 min
 Response: 546321
 Conc: 15.32 ng/ml

Instrument :
 ECD_O
 ClientSampleId :
 TOPSOIL-LKWD-DENALI-3



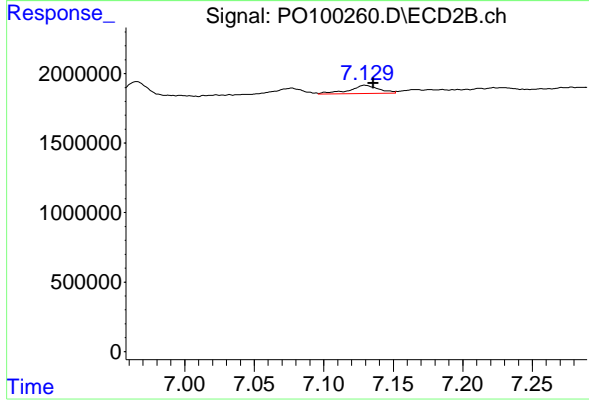
#33 AR-1260-3

R.T.: 6.657 min
 Delta R.T.: -0.003 min
 Response: 572234
 Conc: 8.94 ng/ml



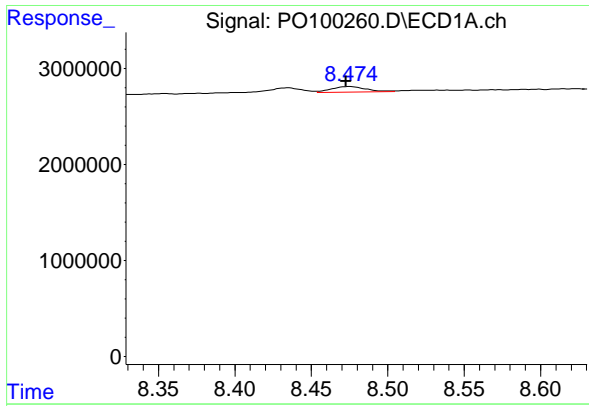
#34 AR-1260-4

R.T.: 8.137 min
 Delta R.T.: -0.006 min
 Response: 693503
 Conc: 16.76 ng/ml



#34 AR-1260-4

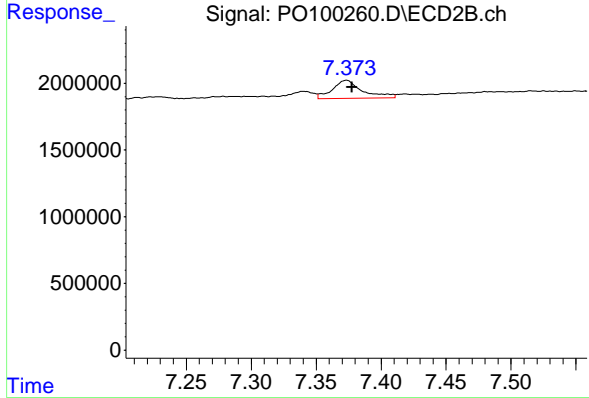
R.T.: 7.130 min
 Delta R.T.: -0.006 min
 Response: 898673
 Conc: 17.82 ng/ml



#35 AR-1260-5

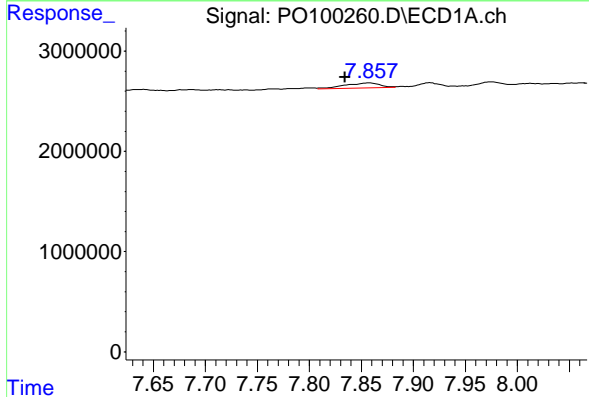
R.T.: 8.475 min
 Delta R.T.: 0.002 min
 Response: 896401
 Conc: 13.42 ng/ml

Instrument :
 ECD_O
 ClientSampleId :
 TOPSOIL-LKWD-DENALI-3



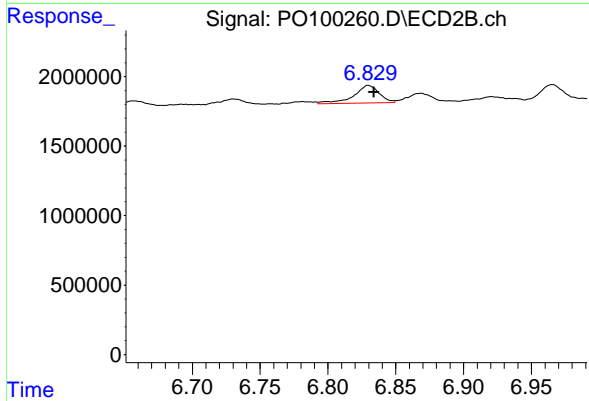
#35 AR-1260-5

R.T.: 7.373 min
 Delta R.T.: -0.004 min
 Response: 2155112
 Conc: 19.22 ng/ml



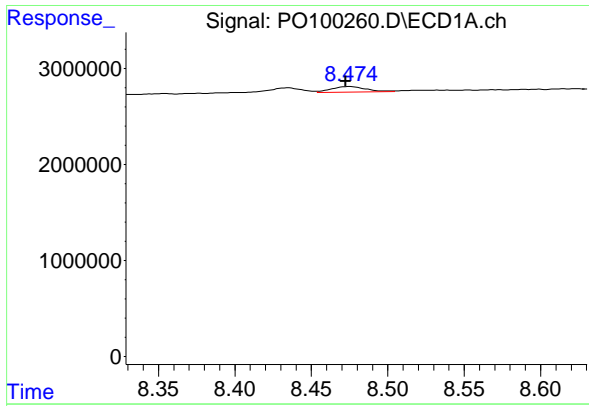
#36 AR-1262-1

R.T.: 7.858 min
 Delta R.T.: 0.024 min
 Response: 1206829
 Conc: 33.36 ng/ml



#36 AR-1262-1

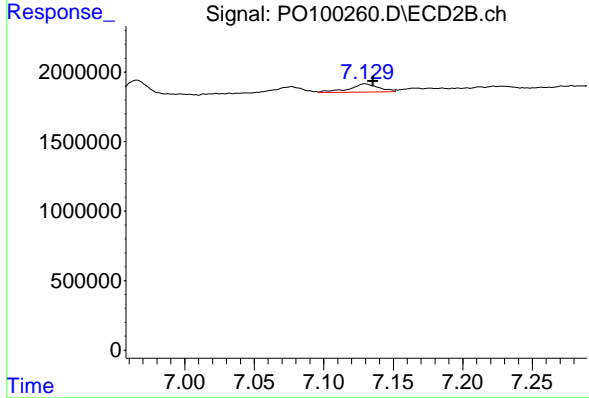
R.T.: 6.830 min
 Delta R.T.: -0.004 min
 Response: 1618624
 Conc: 42.35 ng/ml



#37 AR-1262-2

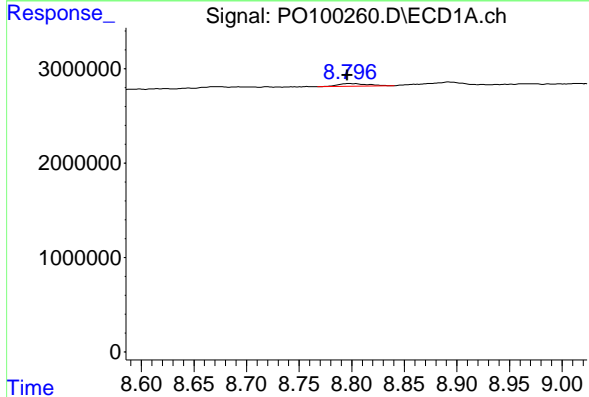
R.T.: 8.475 min
 Delta R.T.: 0.003 min
 Response: 896401
 Conc: 10.56 ng/ml

Instrument :
 ECD_O
 ClientSampleId :
 TOPSOIL-LKWD-DENALI-3



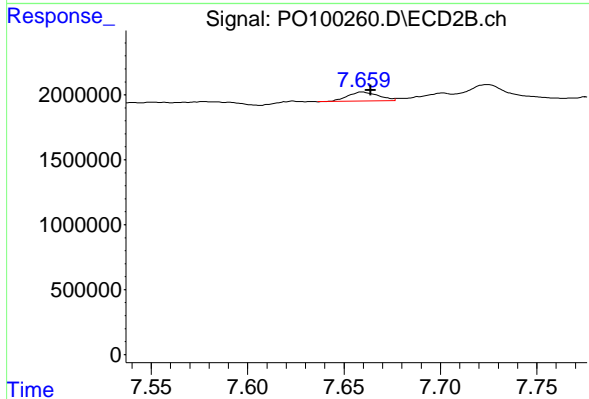
#37 AR-1262-2

R.T.: 7.130 min
 Delta R.T.: -0.006 min
 Response: 898673
 Conc: 11.91 ng/ml



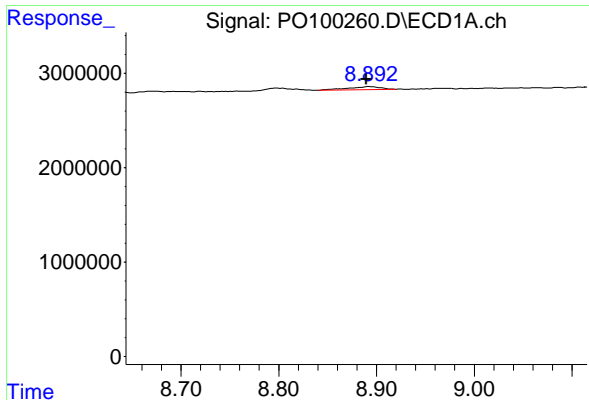
#38 AR-1262-3

R.T.: 8.797 min
 Delta R.T.: 0.002 min
 Response: 600539
 Conc: 9.97 ng/ml



#38 AR-1262-3

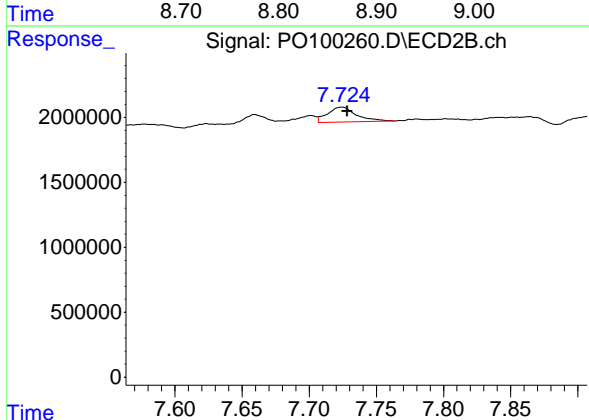
R.T.: 7.660 min
 Delta R.T.: -0.004 min
 Response: 782814
 Conc: 13.44 ng/ml



#39 AR-1262-4

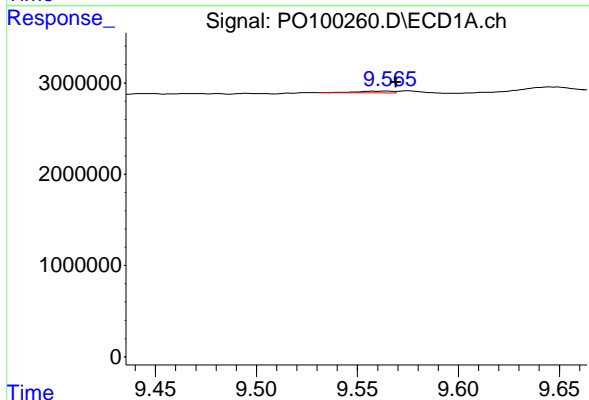
R.T.: 8.892 min
 Delta R.T.: 0.003 min
 Response: 806998
 Conc: 16.74 ng/ml

Instrument :
 ECD_O
 ClientSampleId :
 TOPSOIL-LKWD-DENALI-3



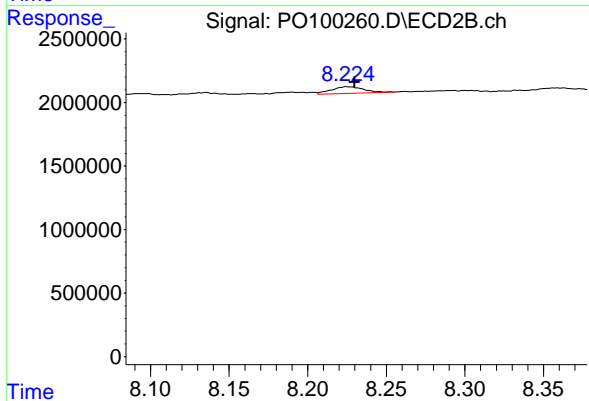
#39 AR-1262-4

R.T.: 7.724 min
 Delta R.T.: -0.004 min
 Response: 1712755
 Conc: 16.66 ng/ml



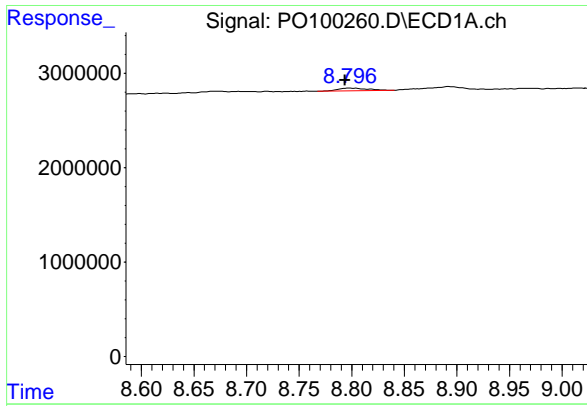
#40 AR-1262-5

R.T.: 9.565 min
 Delta R.T.: -0.004 min
 Response: 244681
 Conc: 9.37 ng/ml



#40 AR-1262-5

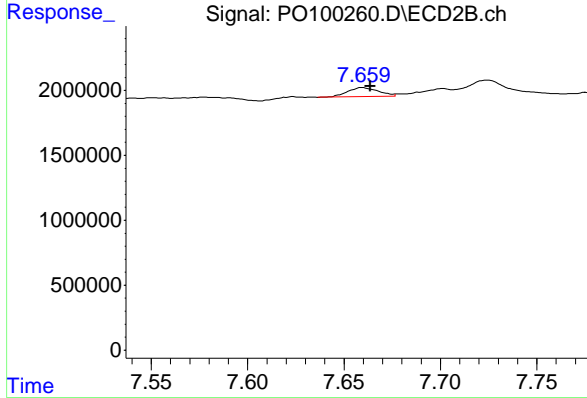
R.T.: 8.225 min
 Delta R.T.: -0.005 min
 Response: 761349
 Conc: 17.47 ng/ml



#41 AR-1268-1

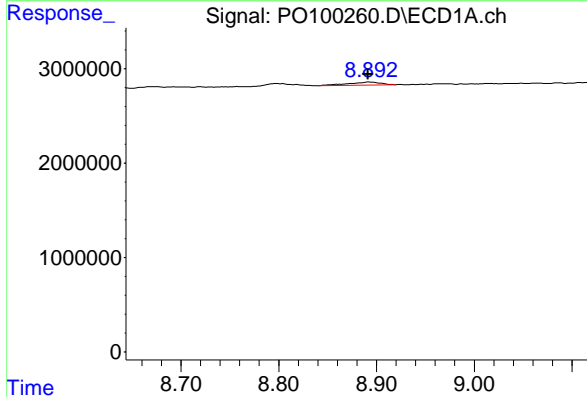
R.T.: 8.797 min
 Delta R.T.: 0.004 min
 Response: 600539
 Conc: 5.44 ng/ml

Instrument :
 ECD_O
 ClientSampleId :
 TOPSOIL-LKWD-DENALI-3



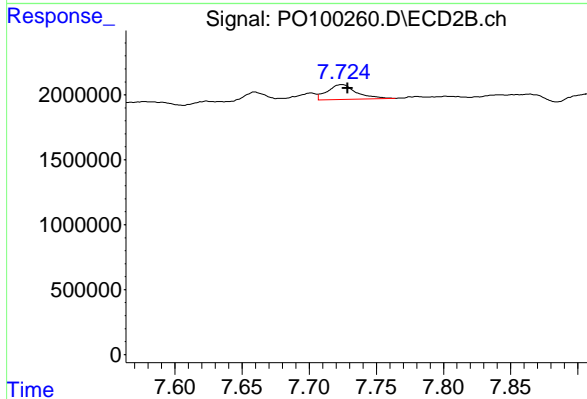
#41 AR-1268-1

R.T.: 7.660 min
 Delta R.T.: -0.004 min
 Response: 782814
 Conc: 4.71 ng/ml



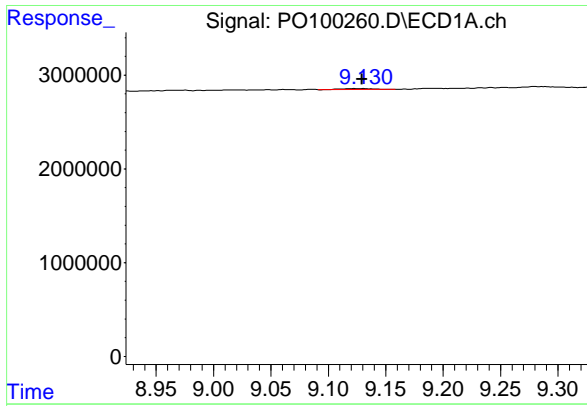
#42 AR-1268-2

R.T.: 8.892 min
 Delta R.T.: 0.000 min
 Response: 806998
 Conc: 8.38 ng/ml



#42 AR-1268-2

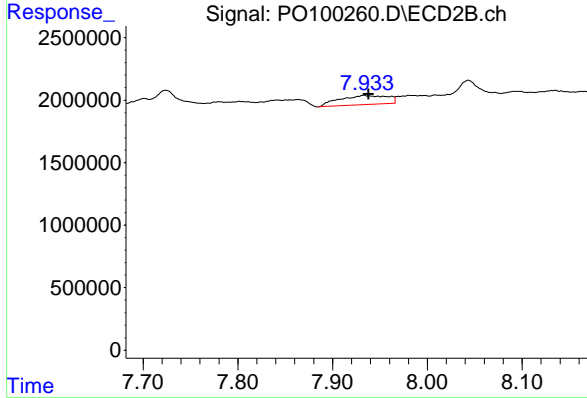
R.T.: 7.724 min
 Delta R.T.: -0.004 min
 Response: 1712755
 Conc: 11.22 ng/ml



#43 AR-1268-3

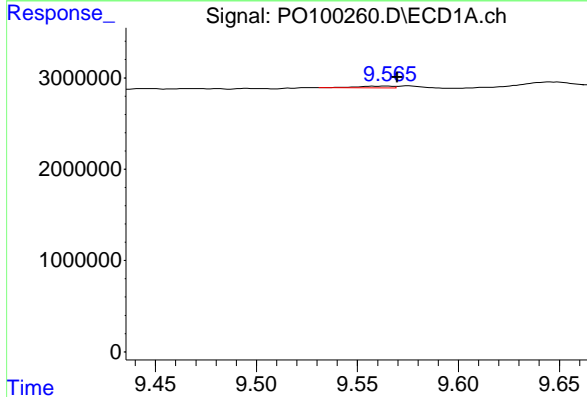
R.T.: 9.131 min
 Delta R.T.: 0.002 min
 Response: 184776
 Conc: 2.05 ng/ml

Instrument :
 ECD_O
 ClientSampleId :
 TOPSOIL-LKWD-DENALI-3



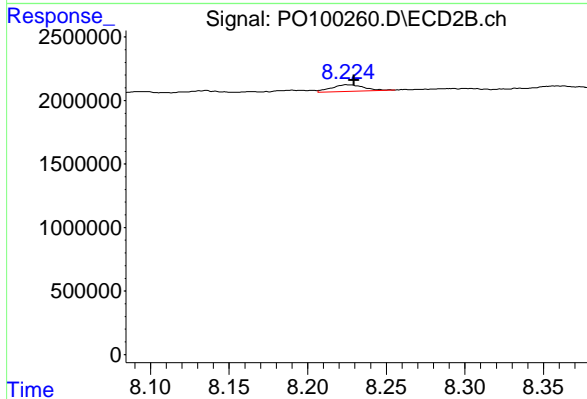
#43 AR-1268-3

R.T.: 7.933 min
 Delta R.T.: -0.005 min
 Response: 2559049
 Conc: 17.86 ng/ml



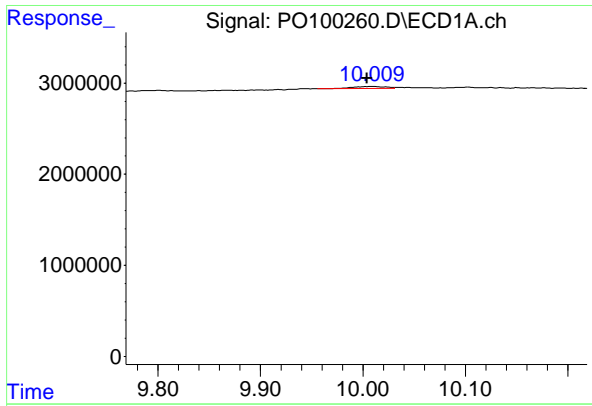
#44 AR-1268-4

R.T.: 9.565 min
 Delta R.T.: -0.005 min
 Response: 244681
 Conc: 8.60 ng/ml



#44 AR-1268-4

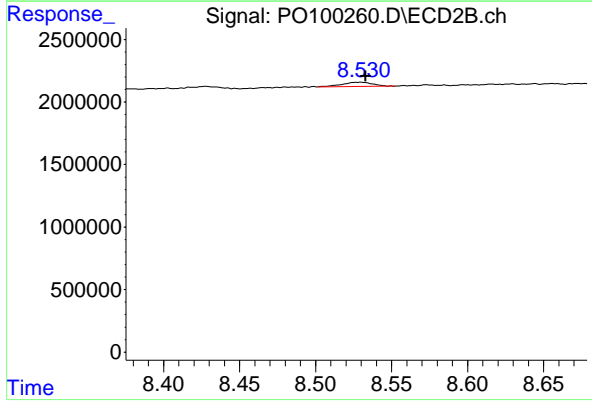
R.T.: 8.225 min
 Delta R.T.: -0.004 min
 Response: 761349
 Conc: 16.20 ng/ml



#45 AR-1268-5

R.T.: 10.010 min
 Delta R.T.: 0.006 min
 Response: 483591
 Conc: 1.92 ng/ml

Instrument :
 ECD_O
 ClientSampleId :
 TOPSOIL-LKWD-DENALI-3



#45 AR-1268-5

R.T.: 8.530 min
 Delta R.T.: -0.003 min
 Response: 478036
 Conc: 1.20 ng/ml