

Data Path : Z:\pestpcbsrv\HPCHEM1\ECD\_0\Data\P0120423\  
 Data File : P0100262.D  
 Signal(s) : Signal #1: ECD1A.ch Signal #2: ECD2B.ch  
 Acq On : 04 Dec 2023 18:48  
 Operator : YP/AJ  
 Sample : 05602-03  
 Misc :  
 ALS Vial : 22 Sample Multiplier: 1

Instrument :  
 ECD\_0  
 ClientSampleId :  
 SPRING-VALLEY-TP-2

Integration File signal 1: autoint1.e  
 Integration File signal 2: autoint2.e  
 Quant Time: Dec 05 00:09:16 2023  
 Quant Method : Z:\pestpcbsrv\HPCHEM1\ECD\_0\methods\P0112123.M  
 Quant Title : GC EXTRACTABLES  
 QLast Update : Tue Nov 21 15:58:40 2023  
 Response via : Initial Calibration  
 Integrator: ChemStation

Volume Inj. : 2 µl  
 Signal #1 Phase : ZB-MR2 Signal #2 Phase: ZB-MR2  
 Signal #1 Info : 30Mx0.32mmx 0.50µ Signal #2 Info : 30M x 0.32mm x 0.25µm

Compound	RT#1	RT#2	Resp#1	Resp#2	ng/ml	ng/ml
-----						
System Monitoring Compounds						
1) SA Tetrachlo...	4.478	3.702	29462926	27543226	17.262	18.363
2) SA Decachlor...	10.359	8.794	11429572	17154650	15.736	15.330
Target Compounds						
3) L1 AR-1016-1	5.665	4.813	261836	49686	6.085	1.574 #
4) L1 AR-1016-2	5.691	4.840	643332	299864	9.937	6.935 #
5) L1 AR-1016-3	5.750	5.002	421851	360973	9.679	15.565 #
6) L1 AR-1016-4	5.828	5.059	3737971	171125	113.240	8.347 #
7) L1 AR-1016-5	6.162	5.275	594828	-40606	18.945	N.D. #
8) L2 AR-1221-1	4.688	3.906	1137051	195775	55.156	10.299 #
9) L2 AR-1221-2	4.791	4.007	438699	507412	29.045	38.938 #
10) L2 AR-1221-3	4.874	4.091	231902	277676	5.168	7.730 #
11) L3 AR-1232-1	4.874	4.091	231902	277676	6.499	9.462 #
12) L3 AR-1232-2	5.390	4.840	78912	299864	4.534	15.121 #
13) L3 AR-1232-3	5.691	5.002	643332	360973	22.703	34.832 #
14) L3 AR-1232-4	5.828	5.121	3737971	465535	269.079	46.835 #
15) L3 AR-1232-5	5.945	5.275	486447	-40606	39.638	N.D. #
16) L4 AR-1242-1	5.665	4.813	261836	49686	7.558	1.891 #
17) L4 AR-1242-2	5.691	4.840	643332	299864	12.260	8.528 #
18) L4 AR-1242-3	5.750	5.002	421851	360973	12.121	18.850 #
19) L4 AR-1242-4	5.828	5.121	3737971	465535	142.180	23.113 #
20) L4 AR-1242-5	6.624	5.630	986505	3992820	44.121	170.883 #
21) L5 AR-1248-1	5.665	4.813	261836	49686	10.128	2.485 #
22) L5 AR-1248-2	5.945	5.059	486447	171125	11.894	6.116 #
23) L5 AR-1248-3	6.162	5.121	594828	465535	13.887	16.121
24) L5 AR-1248-4	6.570	5.275	2837581	-40606	75.285	N.D. #
25) L5 AR-1248-5	6.624	5.670	986505	554977	26.711	18.579 #
26) L6 AR-1254-1	6.544	5.630	3626249	3992820	75.307	77.026
27) L6 AR-1254-2	6.765	5.772	3177127	579921	46.327	12.453 #
28) L6 AR-1254-3	7.135	6.196	2076624	1239962	32.596	15.899 #
29) L6 AR-1254-4	7.416	6.430	308498	394103	8.161	9.235
30) L6 AR-1254-5	7.858	6.829	2117574	2614040	49.473	36.124 #
31) L7 AR-1260-1	7.291	6.311	368924	526962	6.929	9.119 #
32) L7 AR-1260-2	7.548	6.496	3809197	565692	72.011	8.517 #
33) L7 AR-1260-3	7.915	6.657	267980	361234	7.513	5.645
34) L7 AR-1260-4	8.131	7.133	849987	560095	20.537	11.107 #
35) L7 AR-1260-5	8.475	7.371	567427	853183	8.494	7.611
36) L8 AR-1262-1	7.858	6.829	2117574	2614040	58.542	68.393
37) L8 AR-1262-2	8.475	7.133	567427	560095	6.683	7.425
38) L8 AR-1262-3	8.798	7.660	133970	214307	2.224	3.679 #
39) L8 AR-1262-4	8.890	7.722	383475	744812	7.954	7.246
40) L8 AR-1262-5	9.572	8.226	81420	319609	3.119	7.335 #
41) L9 AR-1268-1	8.798	7.660	133970	214307	1.214	1.290

Data Path : Z:\pestpcbsrv\HPCHEM1\ECD\_0\Data\P0120423\  
 Data File : P0100262.D  
 Signal(s) : Signal #1: ECD1A.ch Signal #2: ECD2B.ch  
 Acq On : 04 Dec 2023 18:48  
 Operator : YP/AJ  
 Sample : 05602-03  
 Misc :  
 ALS Vial : 22 Sample Multiplier: 1

**Instrument :**  
 ECD\_0  
**ClientSampleId :**  
 SPRING-VALLEY-TP-2

Integration File signal 1: autoint1.e  
 Integration File signal 2: autoint2.e  
 Quant Time: Dec 05 00:09:16 2023  
 Quant Method : Z:\pestpcbsrv\HPCHEM1\ECD\_0\methods\P0112123.M  
 Quant Title : GC EXTRACTABLES  
 QLast Update : Tue Nov 21 15:58:40 2023  
 Response via : Initial Calibration  
 Integrator: ChemStation

Volume Inj. : 2 µl  
 Signal #1 Phase : ZB-MR1 Signal #2 Phase: ZB-MR2  
 Signal #1 Info : 30Mx0.32mmx 0.50µ Signal #2 Info : 30M x 0.32mm x 0.25µm

	Compound	RT#1	RT#2	Resp#1	Resp#2	ng/ml	ng/ml
42)	L9 AR-1268-2	8.890	7.722	383475	744812	3.983	4.879
43)	L9 AR-1268-3	9.129	7.955	63028	676460	0.699	4.720 #
44)	L9 AR-1268-4	9.572	8.226	81420	319609	2.863	6.802 #
45)	L9 AR-1268-5	10.007	8.527	283517	255147	1.127	0.641 #

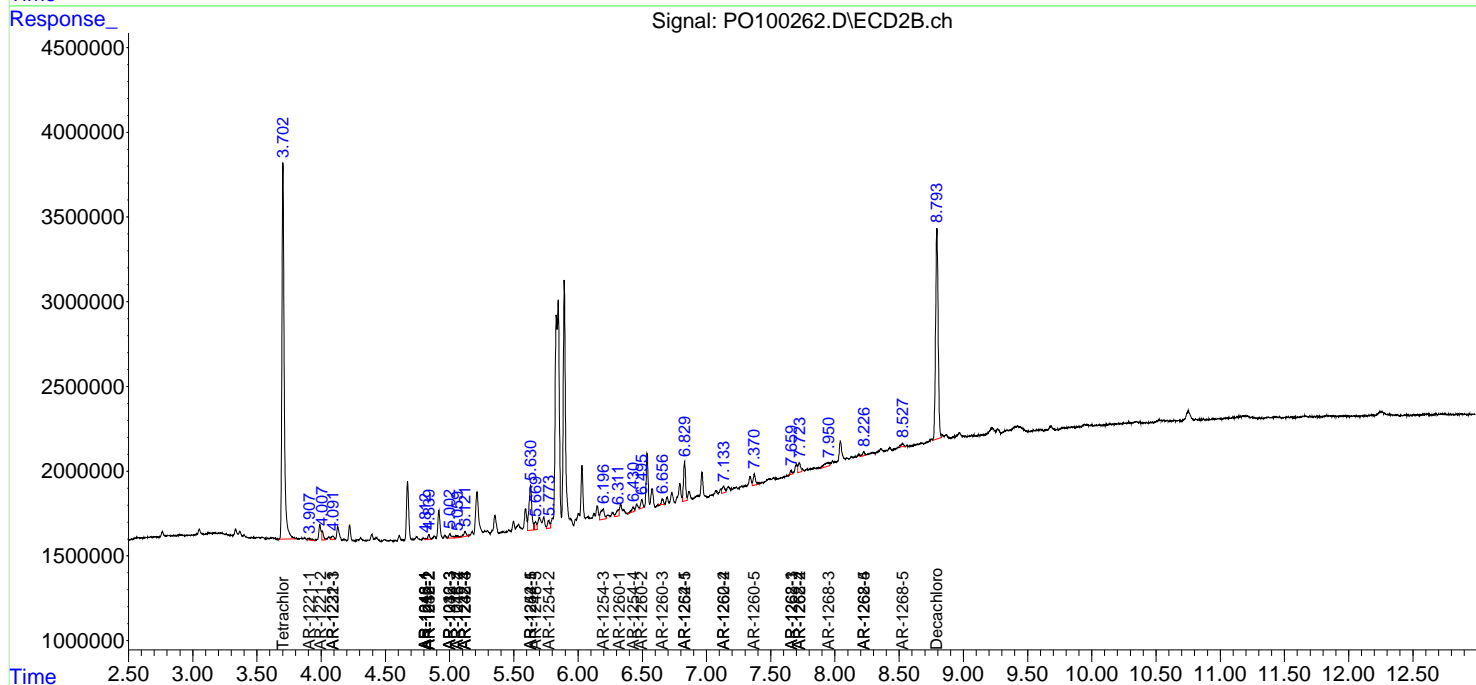
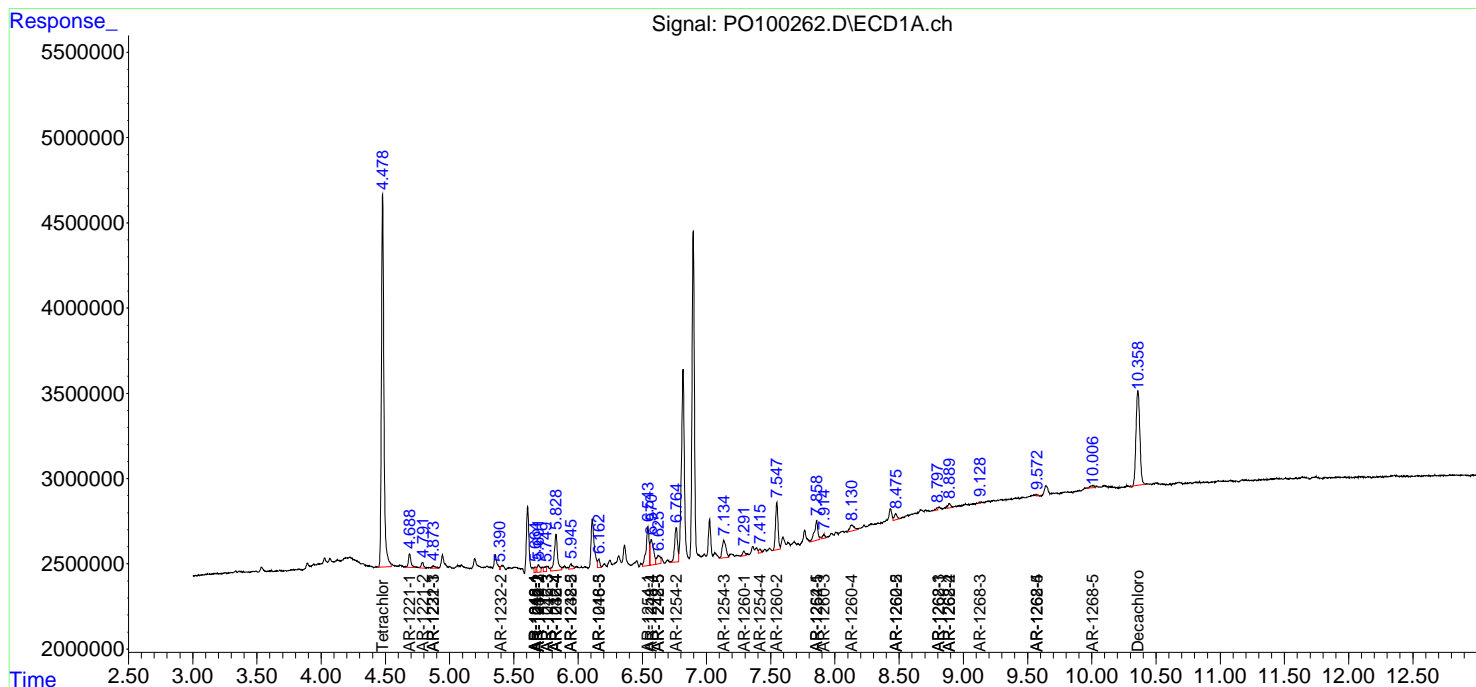
(f)=RT Delta > 1/2 Window (#)=Amounts differ by > 25% (m)=manual int.

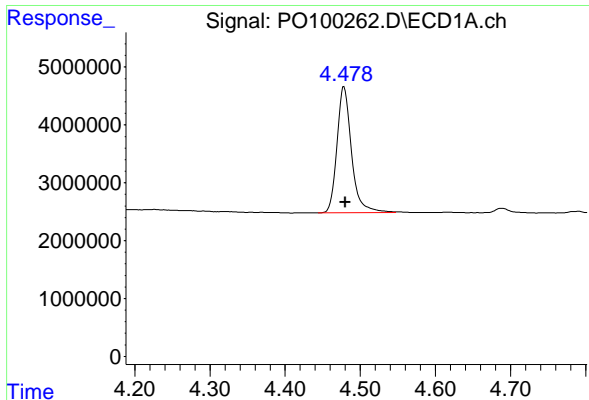
Data Path : Z:\pestpcbsrv\HPCHEM1\ECD\_O\Data\PO120423\  
 Data File : PO100262.D  
 Signal(s) : Signal #1: ECD1A.ch Signal #2: ECD2B.ch  
 Acq On : 04 Dec 2023 18:48  
 Operator : YP/AJ  
 Sample : 05602-03  
 Misc :  
 ALS Vial : 22 Sample Multiplier: 1

Instrument :  
 ECD\_O  
 ClientSampleId :  
 SPRING-VALLEY-TP-2

Integration File signal 1: autoint1.e  
 Integration File signal 2: autoint2.e  
 Quant Time: Dec 05 00:09:16 2023  
 Quant Method : Z:\pestpcbsrv\HPCHEM1\ECD\_O\methods\PO112123.M  
 Quant Title : GC EXTRACTABLES  
 QLast Update : Tue Nov 21 15:58:40 2023  
 Response via : Initial Calibration  
 Integrator: ChemStation

Volume Inj. : 2 µl  
 Signal #1 Phase : ZB-MR1 Signal #2 Phase: ZB-MR2  
 Signal #1 Info : 30Mx0.32mmx 0.50µ Signal #2 Info : 30M x 0.32mm x 0.25µm

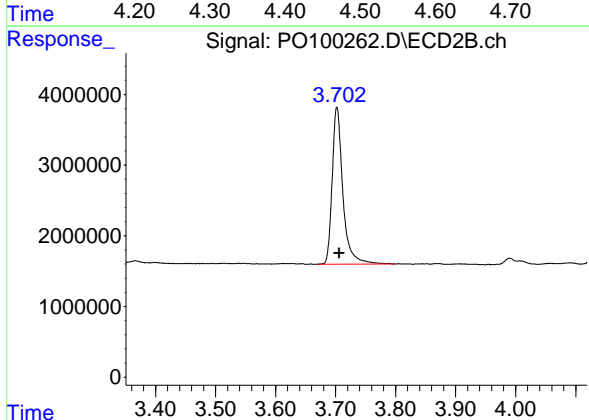




#1 Tetrachloro-m-xylene

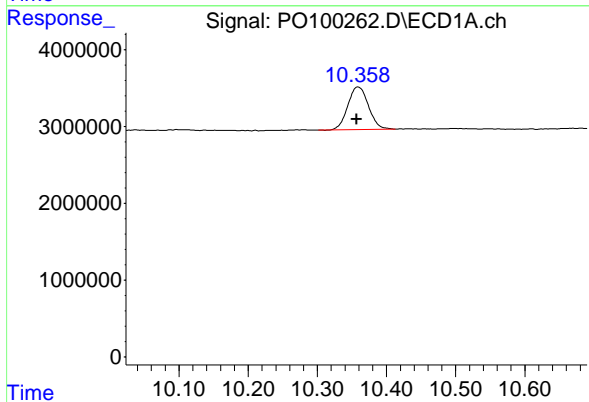
R.T.: 4.478 min  
 Delta R.T.: -0.002 min  
 Response: 29462926  
 Conc: 17.26 ng/ml

Instrument :  
 ECD\_O  
 ClientSampleId :  
 SPRING-VALLEY-TP-2



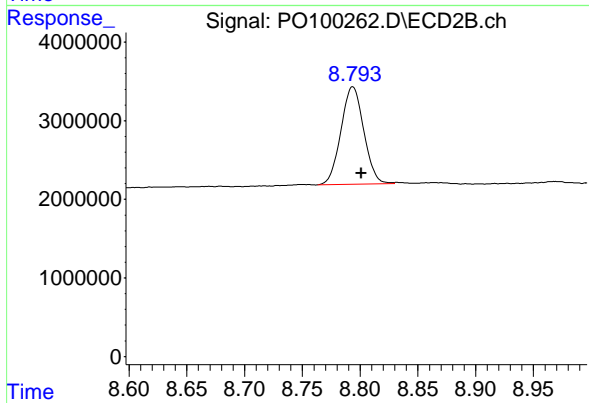
#1 Tetrachloro-m-xylene

R.T.: 3.702 min  
 Delta R.T.: -0.004 min  
 Response: 27543226  
 Conc: 18.36 ng/ml



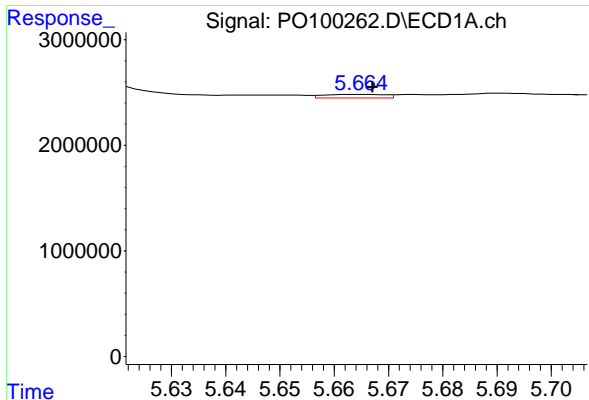
#2 Decachlorobiphenyl

R.T.: 10.359 min  
 Delta R.T.: 0.002 min  
 Response: 11429572  
 Conc: 15.74 ng/ml



#2 Decachlorobiphenyl

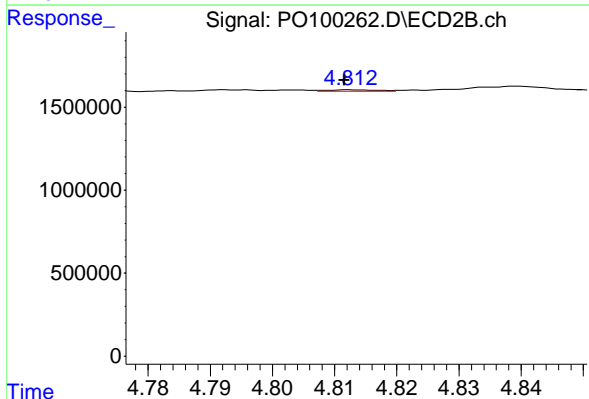
R.T.: 8.794 min  
 Delta R.T.: -0.007 min  
 Response: 17154650  
 Conc: 15.33 ng/ml



#3 AR-1016-1

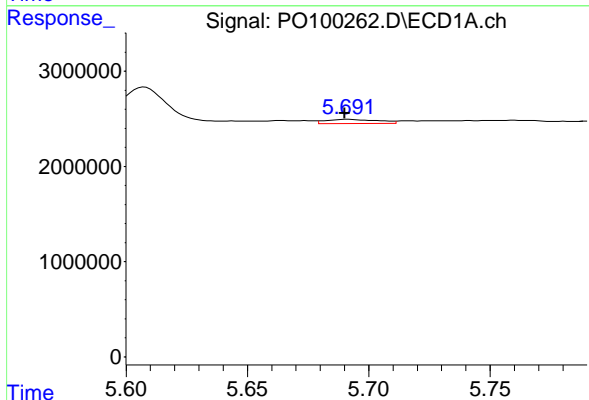
R.T.: 5.665 min  
 Delta R.T.: -0.002 min  
 Response: 261836  
 Conc: 6.09 ng/ml

Instrument :  
 ECD\_O  
 ClientSampleId :  
 SPRING-VALLEY-TP-2



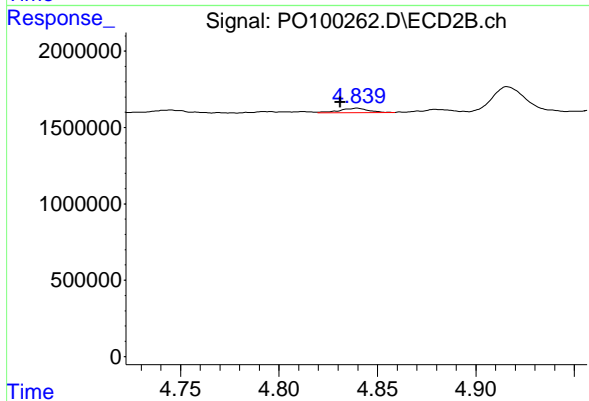
#3 AR-1016-1

R.T.: 4.813 min  
 Delta R.T.: 0.000 min  
 Response: 49686  
 Conc: 1.57 ng/ml



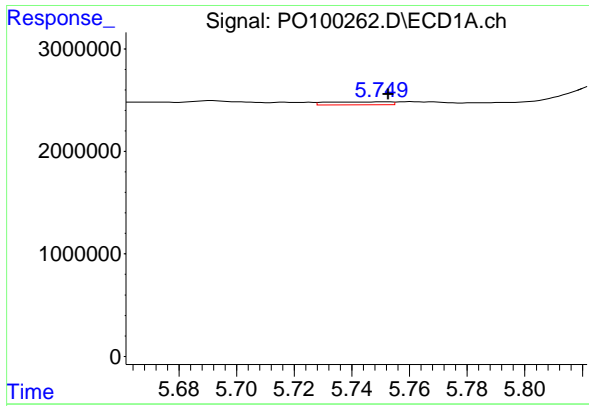
#4 AR-1016-2

R.T.: 5.691 min  
 Delta R.T.: 0.001 min  
 Response: 643332  
 Conc: 9.94 ng/ml



#4 AR-1016-2

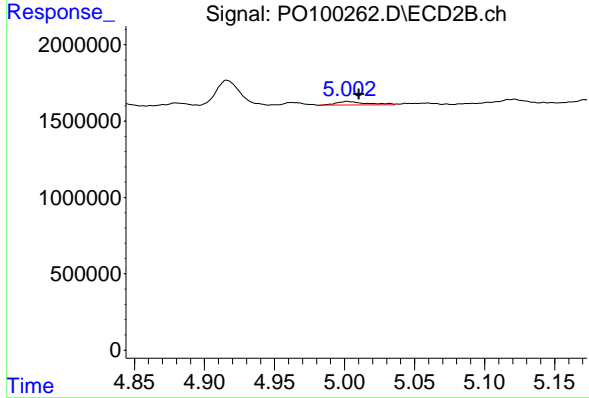
R.T.: 4.840 min  
 Delta R.T.: 0.008 min  
 Response: 299864  
 Conc: 6.94 ng/ml



#5 AR-1016-3

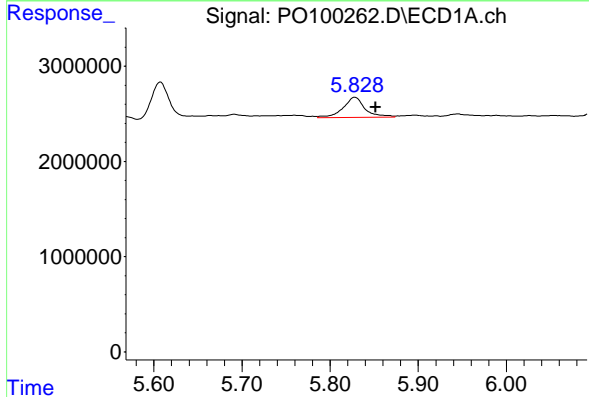
R.T.: 5.750 min  
 Delta R.T.: -0.002 min  
 Response: 421851  
 Conc: 9.68 ng/ml

Instrument :  
 ECD\_O  
 ClientSampleId :  
 SPRING-VALLEY-TP-2



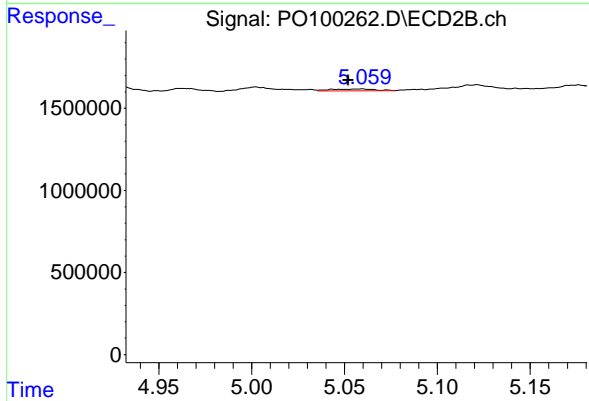
#5 AR-1016-3

R.T.: 5.002 min  
 Delta R.T.: -0.008 min  
 Response: 360973  
 Conc: 15.57 ng/ml



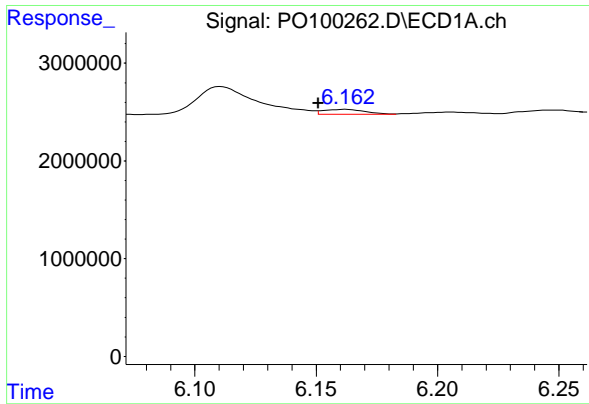
#6 AR-1016-4

R.T.: 5.828 min  
 Delta R.T.: -0.023 min  
 Response: 3737971  
 Conc: 113.24 ng/ml



#6 AR-1016-4

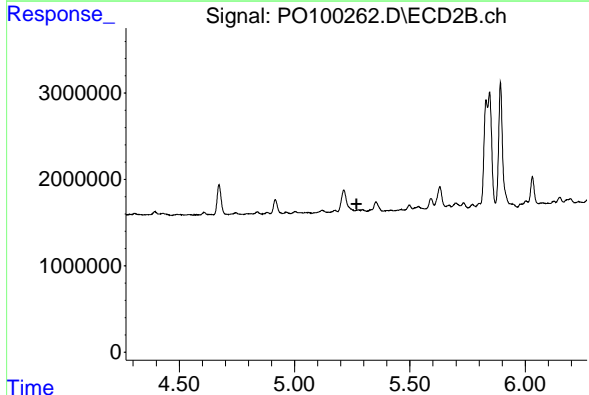
R.T.: 5.059 min  
 Delta R.T.: 0.007 min  
 Response: 171125  
 Conc: 8.35 ng/ml



#7 AR-1016-5

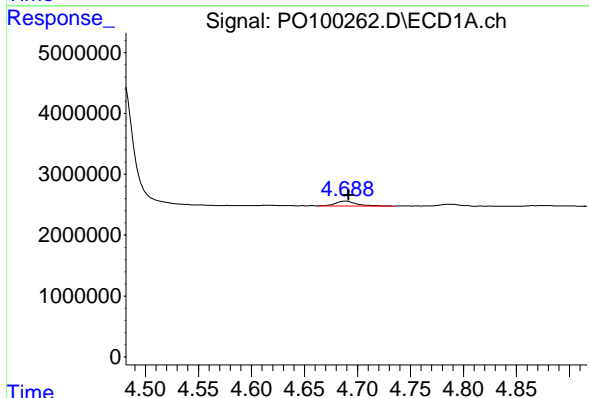
R.T.: 6.162 min  
 Delta R.T.: 0.011 min  
 Response: 594828  
 Conc: 18.94 ng/ml

Instrument :  
 ECD\_O  
 ClientSampleId :  
 SPRING-VALLEY-TP-2



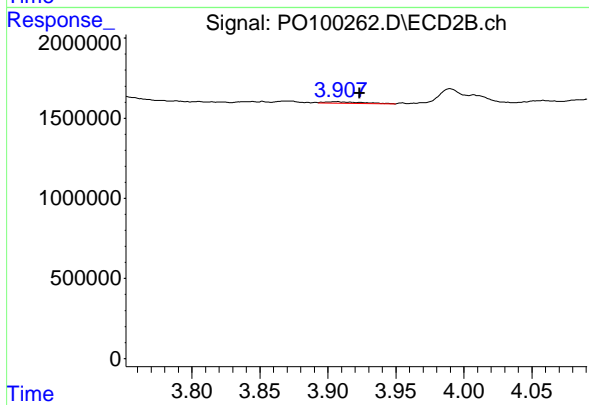
#7 AR-1016-5

R.T.: 5.275 min  
 Delta R.T.: 0.006 min  
 Response: -40606  
 Conc: N.D.



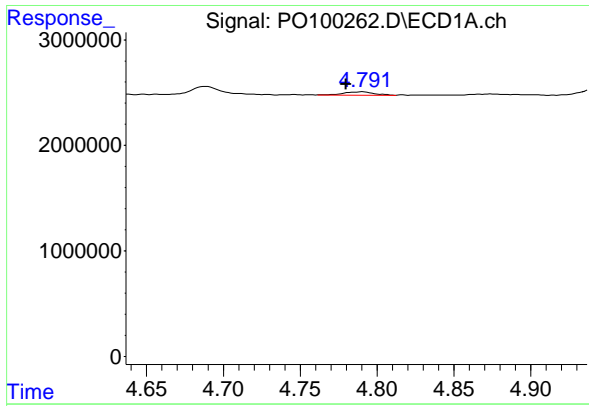
#8 AR-1221-1

R.T.: 4.688 min  
 Delta R.T.: -0.003 min  
 Response: 1137051  
 Conc: 55.16 ng/ml



#8 AR-1221-1

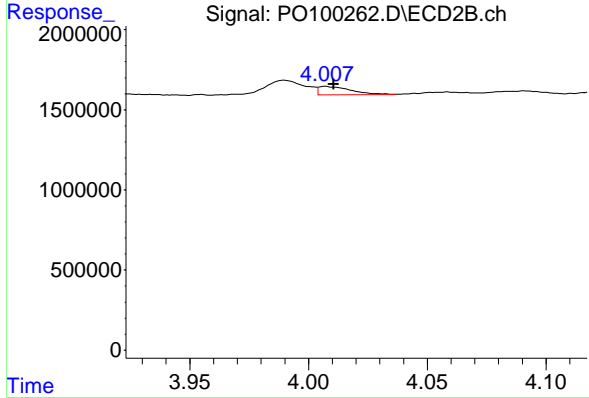
R.T.: 3.906 min  
 Delta R.T.: -0.017 min  
 Response: 195775  
 Conc: 10.30 ng/ml



#9 AR-1221-2

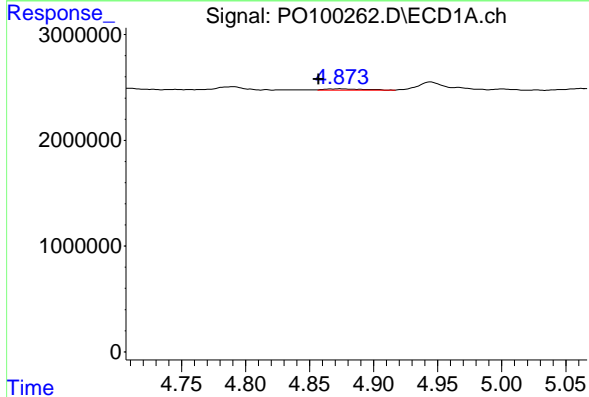
R.T.: 4.791 min  
 Delta R.T.: 0.011 min  
 Response: 438699  
 Conc: 29.04 ng/ml

Instrument :  
 ECD\_O  
 ClientSampleId :  
 SPRING-VALLEY-TP-2



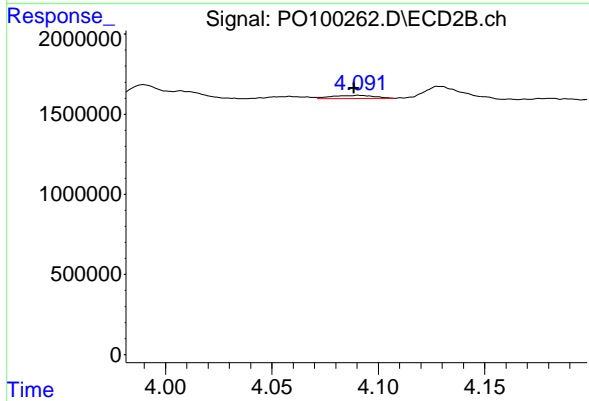
#9 AR-1221-2

R.T.: 4.007 min  
 Delta R.T.: -0.004 min  
 Response: 507412  
 Conc: 38.94 ng/ml



#10 AR-1221-3

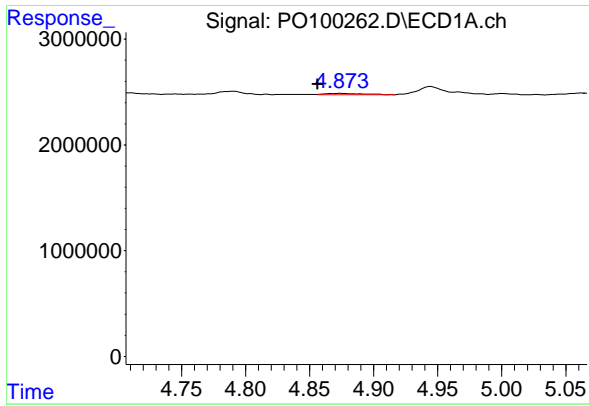
R.T.: 4.874 min  
 Delta R.T.: 0.017 min  
 Response: 231902  
 Conc: 5.17 ng/ml



#10 AR-1221-3

R.T.: 4.091 min  
 Delta R.T.: 0.002 min  
 Response: 277676  
 Conc: 7.73 ng/ml

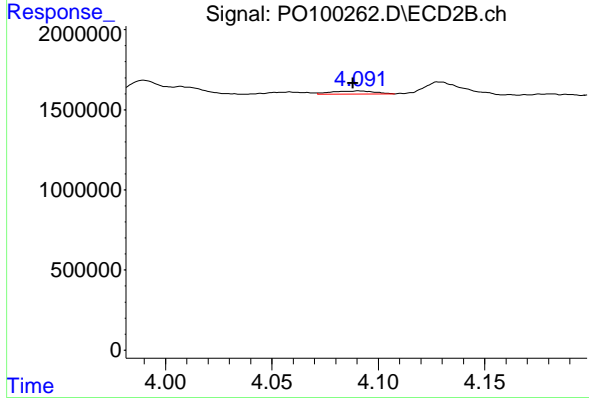




#11 AR-1232-1

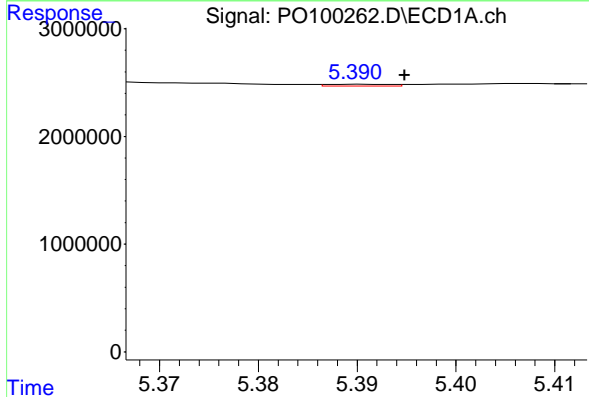
R.T.: 4.874 min  
 Delta R.T.: 0.017 min  
 Response: 231902  
 Conc: 6.50 ng/ml

Instrument :  
 ECD\_O  
 ClientSampleId :  
 SPRING-VALLEY-TP-2



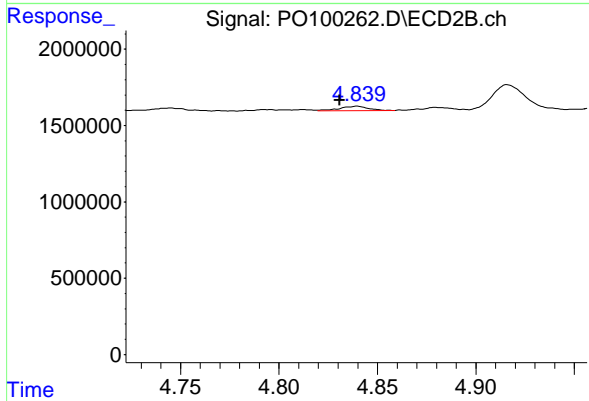
#11 AR-1232-1

R.T.: 4.091 min  
 Delta R.T.: 0.003 min  
 Response: 277676  
 Conc: 9.46 ng/ml



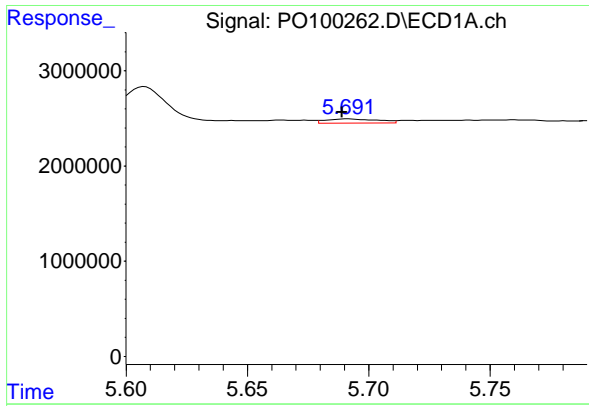
#12 AR-1232-2

R.T.: 5.390 min  
 Delta R.T.: -0.005 min  
 Response: 78912  
 Conc: 4.53 ng/ml



#12 AR-1232-2

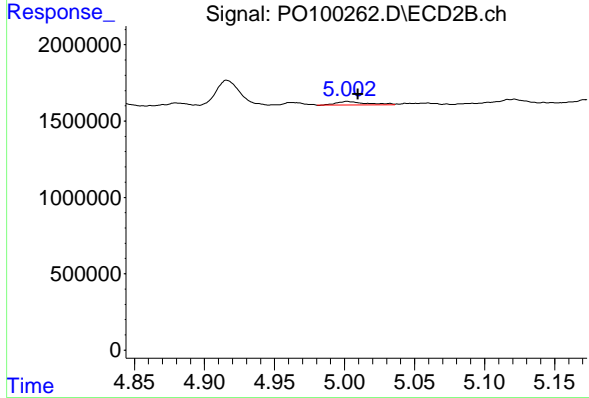
R.T.: 4.840 min  
 Delta R.T.: 0.009 min  
 Response: 299864  
 Conc: 15.12 ng/ml



#13 AR-1232-3

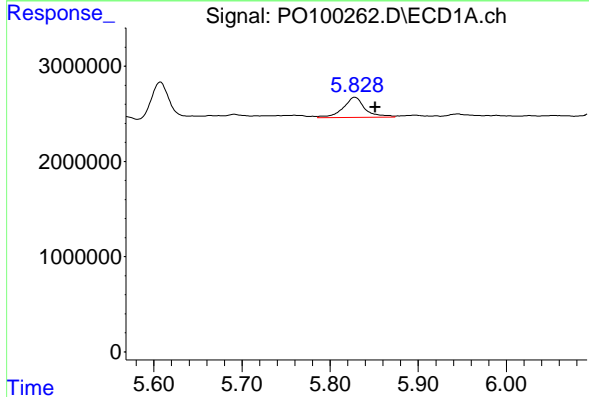
R.T.: 5.691 min  
 Delta R.T.: 0.002 min  
 Response: 643332  
 Conc: 22.70 ng/ml

Instrument :  
 ECD\_O  
 ClientSampleId :  
 SPRING-VALLEY-TP-2



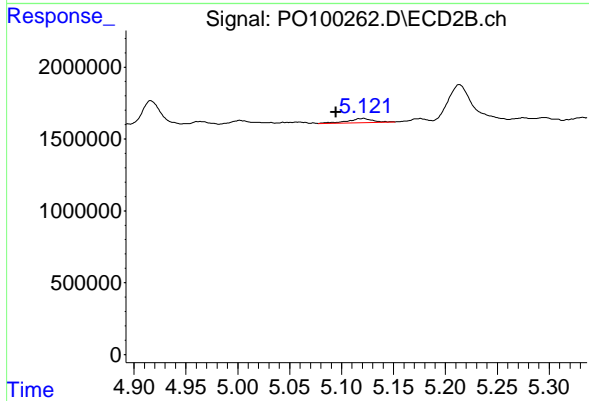
#13 AR-1232-3

R.T.: 5.002 min  
 Delta R.T.: -0.008 min  
 Response: 360973  
 Conc: 34.83 ng/ml



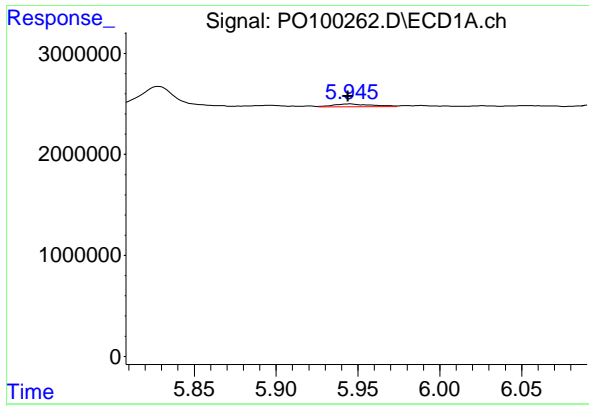
#14 AR-1232-4

R.T.: 5.828 min  
 Delta R.T.: -0.023 min  
 Response: 3737971  
 Conc: 269.08 ng/ml



#14 AR-1232-4

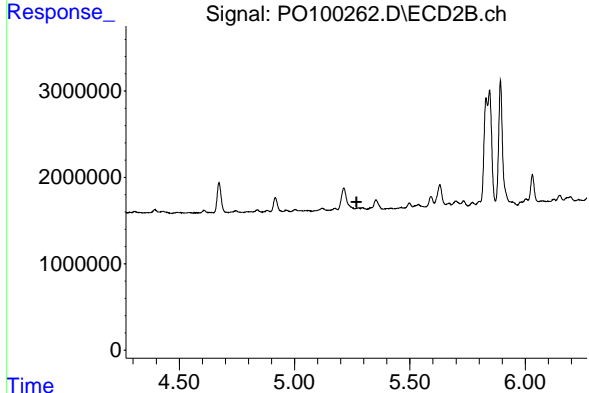
R.T.: 5.121 min  
 Delta R.T.: 0.027 min  
 Response: 465535  
 Conc: 46.84 ng/ml



#15 AR-1232-5

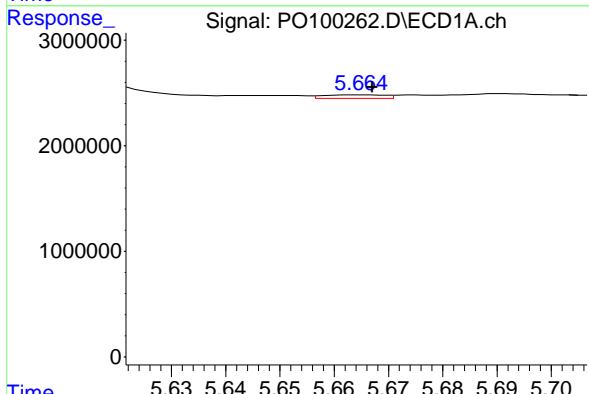
R.T.: 5.945 min  
 Delta R.T.: 0.001 min  
 Response: 486447  
 Conc: 39.64 ng/ml

Instrument :  
 ECD\_O  
 ClientSampleId :  
 SPRING-VALLEY-TP-2



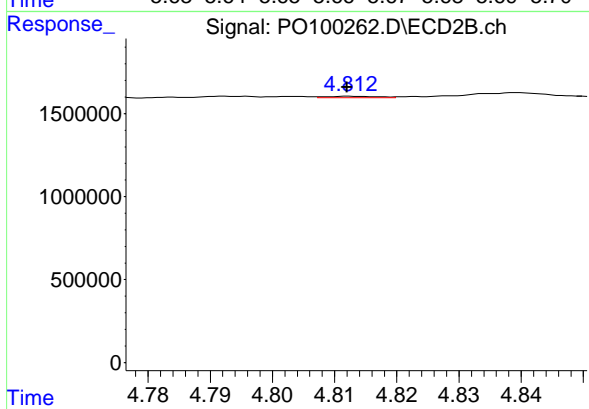
#15 AR-1232-5

R.T.: 5.275 min  
 Delta R.T.: 0.007 min  
 Response: -40606  
 Conc: N.D.



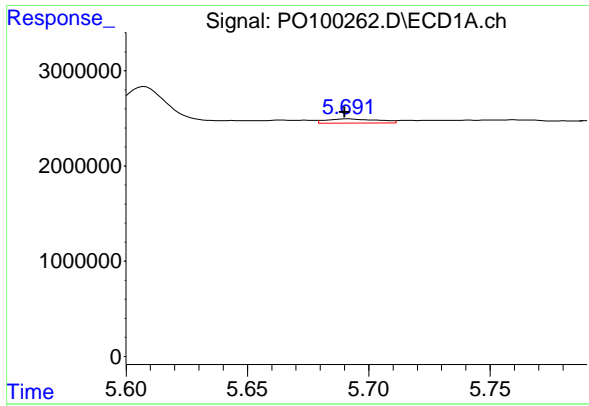
#16 AR-1242-1

R.T.: 5.665 min  
 Delta R.T.: -0.002 min  
 Response: 261836  
 Conc: 7.56 ng/ml



#16 AR-1242-1

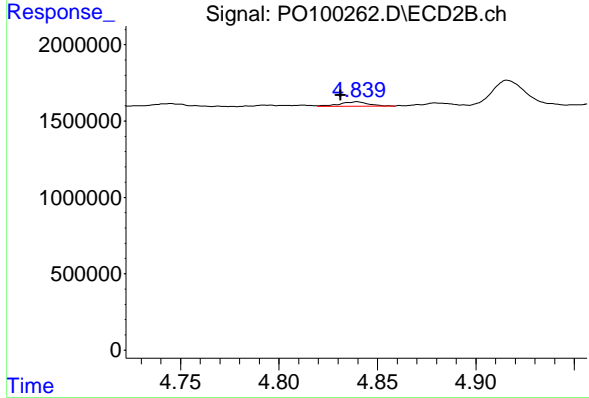
R.T.: 4.813 min  
 Delta R.T.: 0.000 min  
 Response: 49686  
 Conc: 1.89 ng/ml



#17 AR-1242-2

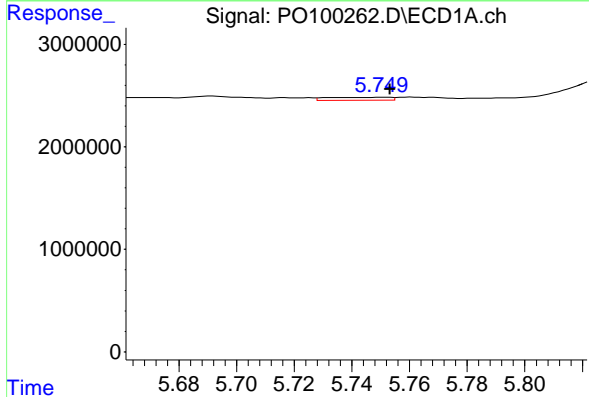
R.T.: 5.691 min  
 Delta R.T.: 0.001 min  
 Response: 643332  
 Conc: 12.26 ng/ml

Instrument :  
 ECD\_O  
 ClientSampleId :  
 SPRING-VALLEY-TP-2



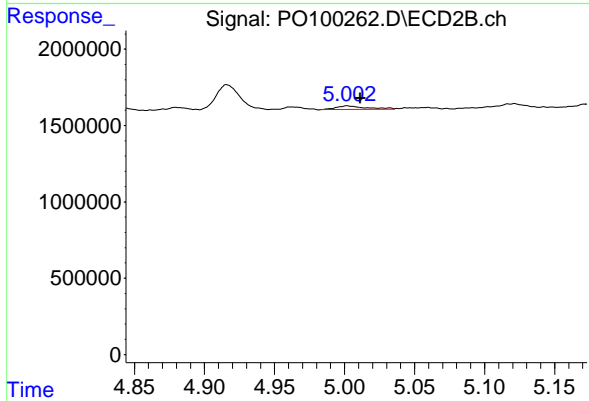
#17 AR-1242-2

R.T.: 4.840 min  
 Delta R.T.: 0.008 min  
 Response: 299864  
 Conc: 8.53 ng/ml



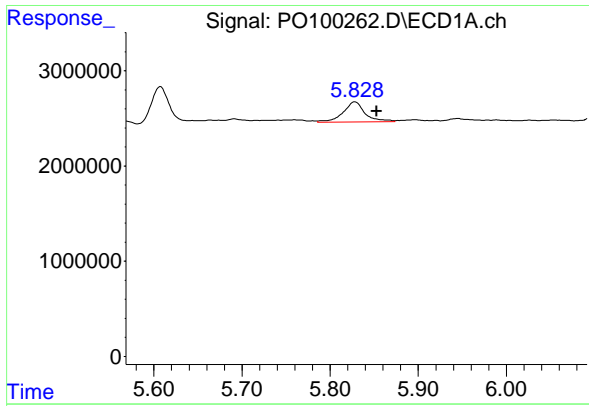
#18 AR-1242-3

R.T.: 5.750 min  
 Delta R.T.: -0.003 min  
 Response: 421851  
 Conc: 12.12 ng/ml



#18 AR-1242-3

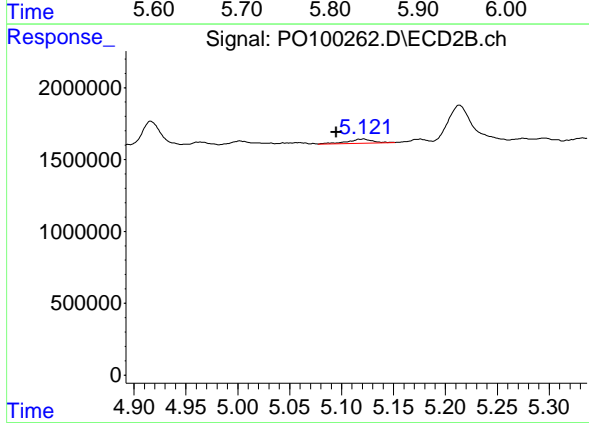
R.T.: 5.002 min  
 Delta R.T.: -0.009 min  
 Response: 360973  
 Conc: 18.85 ng/ml



#19 AR-1242-4

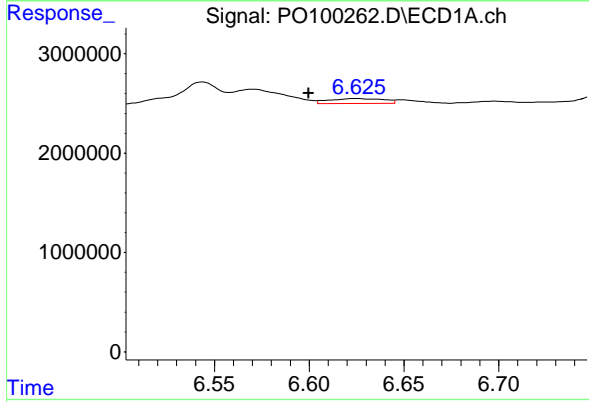
R.T.: 5.828 min  
 Delta R.T.: -0.025 min  
 Response: 3737971  
 Conc: 142.18 ng/ml

Instrument :  
 ECD\_O  
 ClientSampleId :  
 SPRING-VALLEY-TP-2



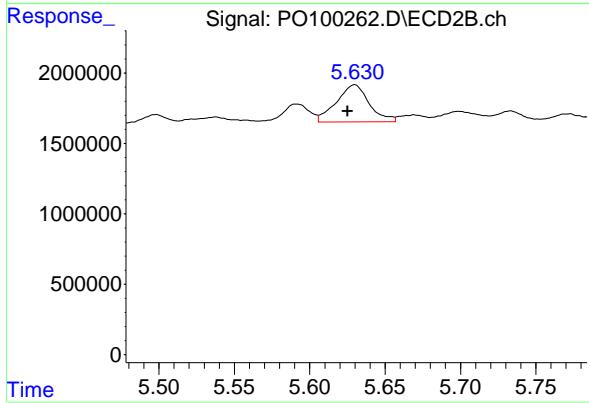
#19 AR-1242-4

R.T.: 5.121 min  
 Delta R.T.: 0.026 min  
 Response: 465535  
 Conc: 23.11 ng/ml



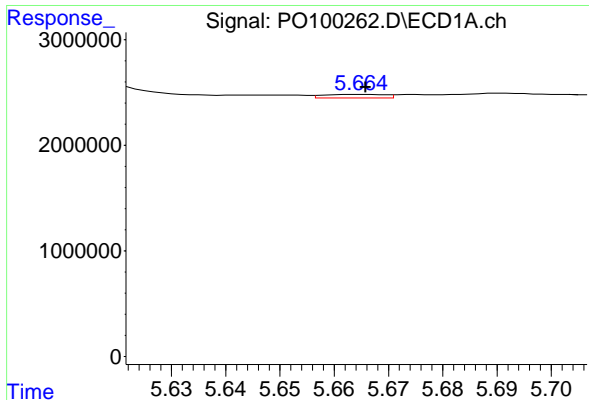
#20 AR-1242-5

R.T.: 6.624 min  
 Delta R.T.: 0.025 min  
 Response: 986505  
 Conc: 44.12 ng/ml



#20 AR-1242-5

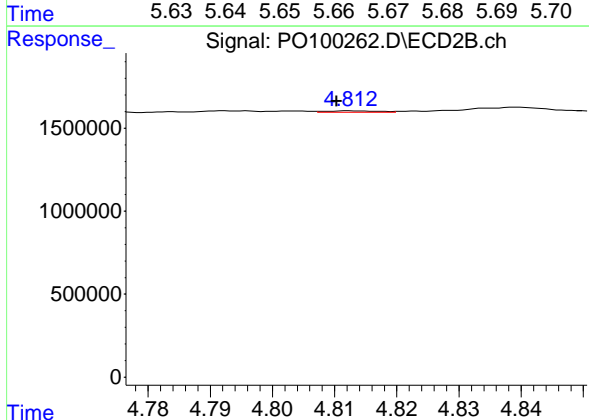
R.T.: 5.630 min  
 Delta R.T.: 0.005 min  
 Response: 3992820  
 Conc: 170.88 ng/ml



#21 AR-1248-1

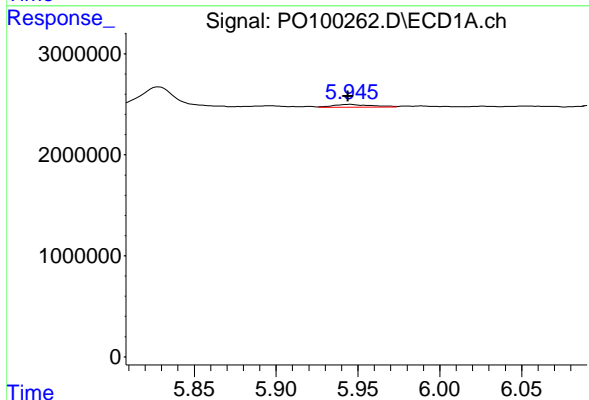
R.T.: 5.665 min  
 Delta R.T.: 0.000 min  
 Response: 261836  
 Conc: 10.13 ng/ml

Instrument :  
 ECD\_O  
 ClientSampleId :  
 SPRING-VALLEY-TP-2



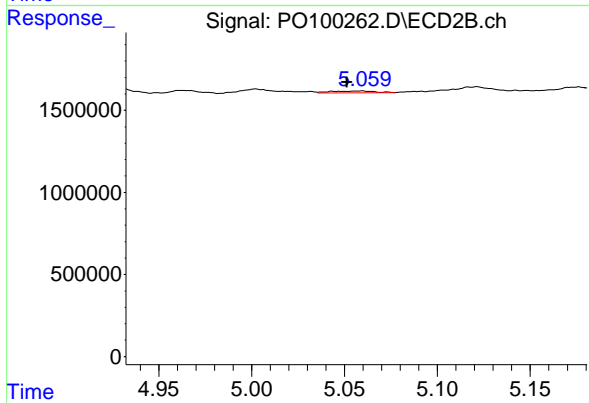
#21 AR-1248-1

R.T.: 4.813 min  
 Delta R.T.: 0.002 min  
 Response: 49686  
 Conc: 2.49 ng/ml



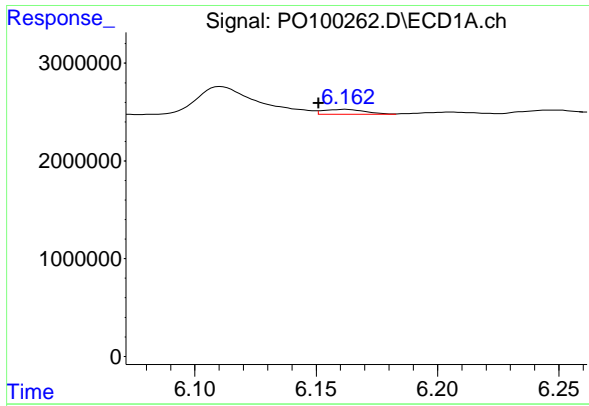
#22 AR-1248-2

R.T.: 5.945 min  
 Delta R.T.: 0.001 min  
 Response: 486447  
 Conc: 11.89 ng/ml



#22 AR-1248-2

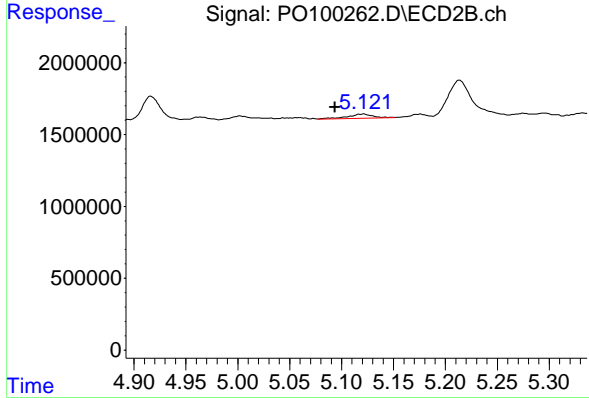
R.T.: 5.059 min  
 Delta R.T.: 0.008 min  
 Response: 171125  
 Conc: 6.12 ng/ml



#23 AR-1248-3

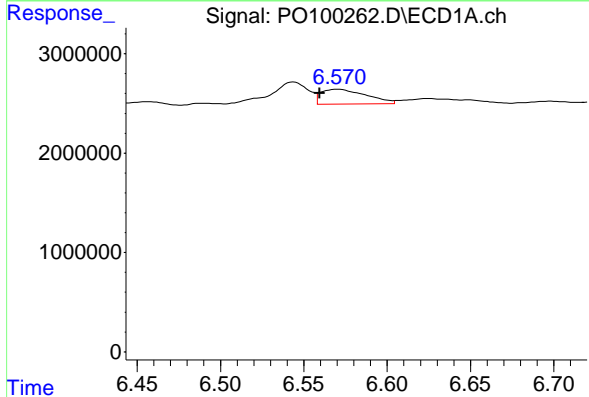
R.T.: 6.162 min  
 Delta R.T.: 0.011 min  
 Response: 594828  
 Conc: 13.89 ng/ml

Instrument :  
 ECD\_O  
 ClientSampleId :  
 SPRING-VALLEY-TP-2



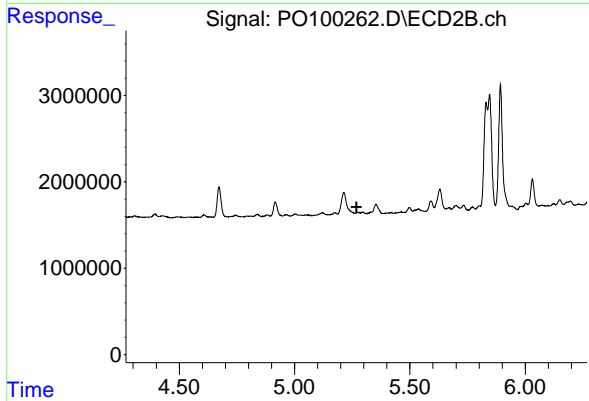
#23 AR-1248-3

R.T.: 5.121 min  
 Delta R.T.: 0.027 min  
 Response: 465535  
 Conc: 16.12 ng/ml



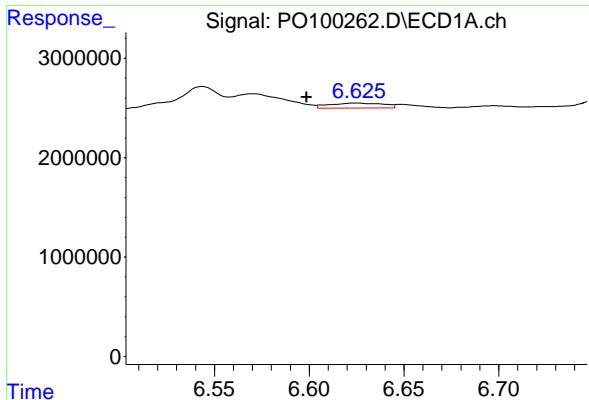
#24 AR-1248-4

R.T.: 6.570 min  
 Delta R.T.: 0.011 min  
 Response: 2837581  
 Conc: 75.28 ng/ml



#24 AR-1248-4

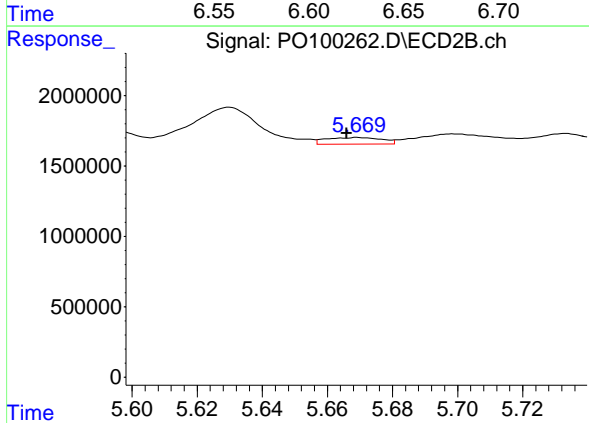
R.T.: 5.275 min  
 Delta R.T.: 0.007 min  
 Response: -40606  
 Conc: N.D.



#25 AR-1248-5

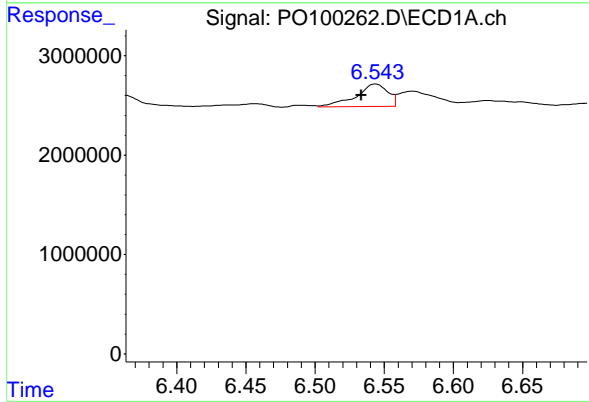
R.T.: 6.624 min  
 Delta R.T.: 0.026 min  
 Response: 986505  
 Conc: 26.71 ng/ml

Instrument :  
 ECD\_O  
 ClientSampleId :  
 SPRING-VALLEY-TP-2



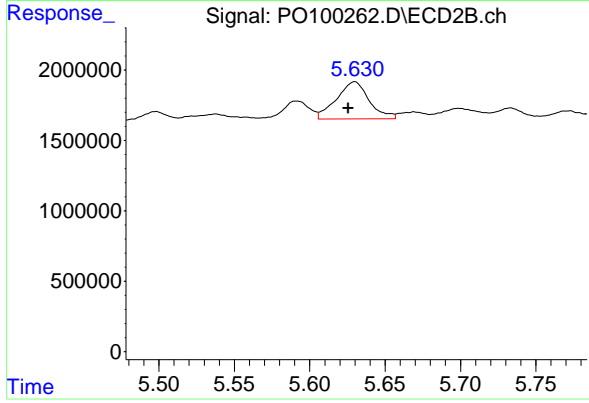
#25 AR-1248-5

R.T.: 5.670 min  
 Delta R.T.: 0.004 min  
 Response: 554977  
 Conc: 18.58 ng/ml



#26 AR-1254-1

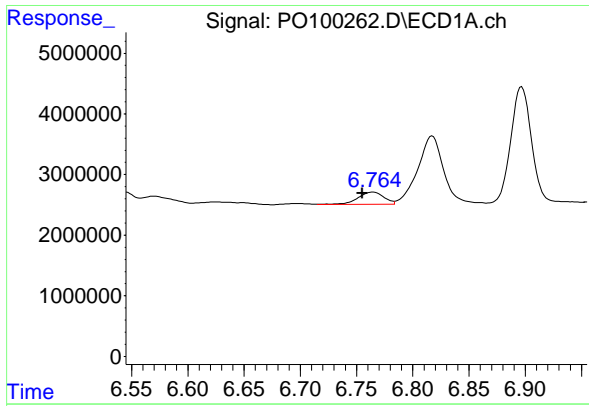
R.T.: 6.544 min  
 Delta R.T.: 0.010 min  
 Response: 3626249  
 Conc: 75.31 ng/ml



#26 AR-1254-1

R.T.: 5.630 min  
 Delta R.T.: 0.004 min  
 Response: 3992820  
 Conc: 77.03 ng/ml

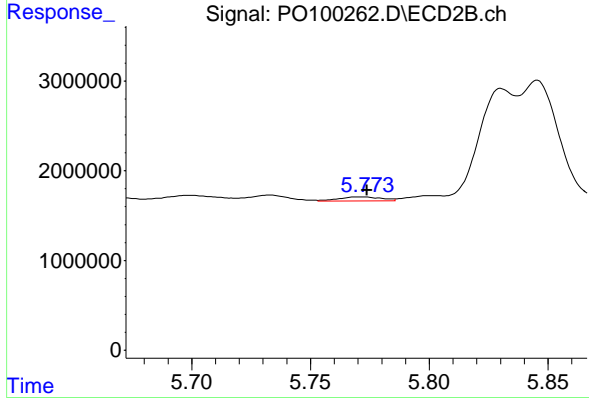




#27 AR-1254-2

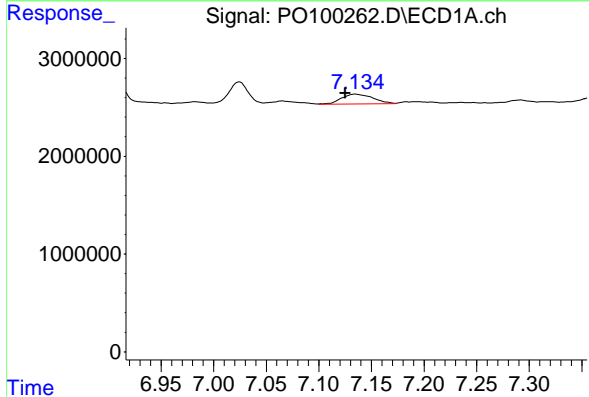
R.T.: 6.765 min  
 Delta R.T.: 0.010 min  
 Response: 3177127  
 Conc: 46.33 ng/ml

Instrument :  
 ECD\_O  
 ClientSampleId :  
 SPRING-VALLEY-TP-2



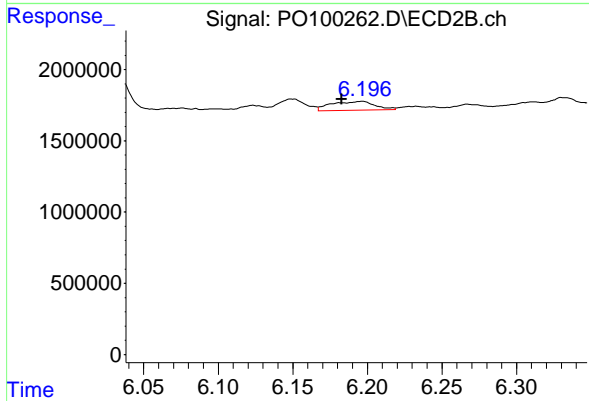
#27 AR-1254-2

R.T.: 5.772 min  
 Delta R.T.: -0.002 min  
 Response: 579921  
 Conc: 12.45 ng/ml



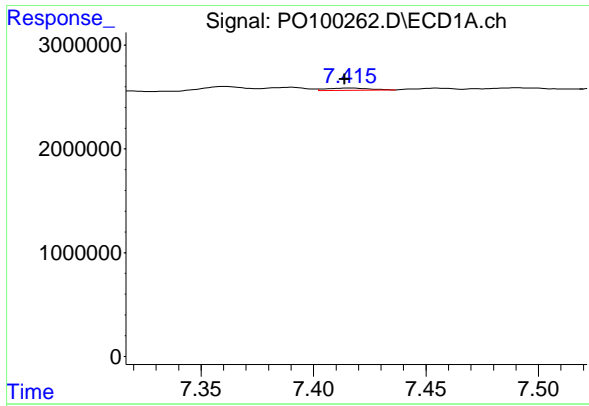
#28 AR-1254-3

R.T.: 7.135 min  
 Delta R.T.: 0.010 min  
 Response: 2076624  
 Conc: 32.60 ng/ml



#28 AR-1254-3

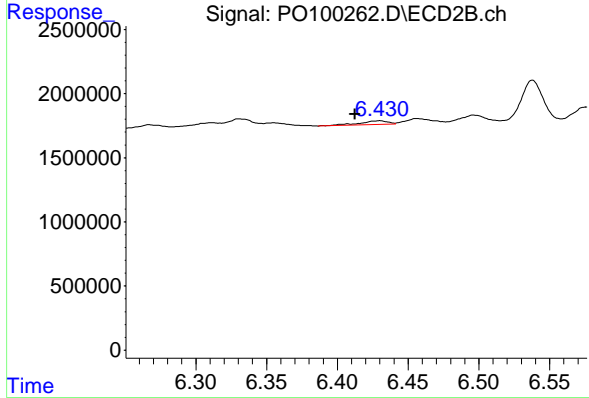
R.T.: 6.196 min  
 Delta R.T.: 0.013 min  
 Response: 1239962  
 Conc: 15.90 ng/ml



#29 AR-1254-4

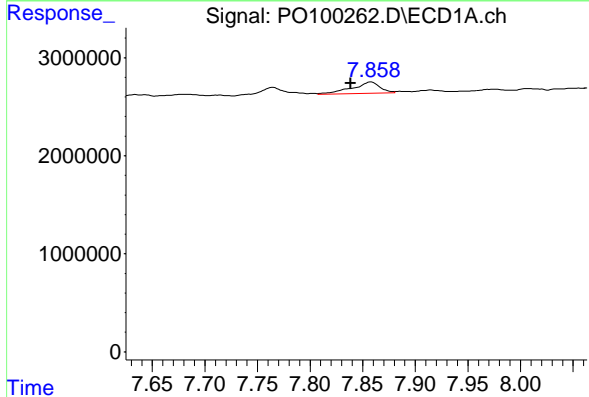
R.T.: 7.416 min  
 Delta R.T.: 0.002 min  
 Response: 308498  
 Conc: 8.16 ng/ml

Instrument :  
 ECD\_O  
 ClientSampleId :  
 SPRING-VALLEY-TP-2



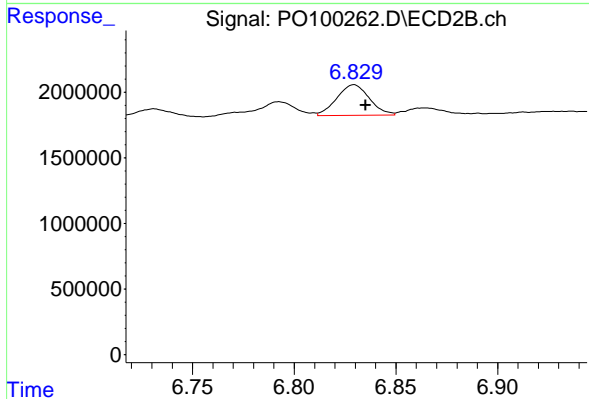
#29 AR-1254-4

R.T.: 6.430 min  
 Delta R.T.: 0.017 min  
 Response: 394103  
 Conc: 9.23 ng/ml



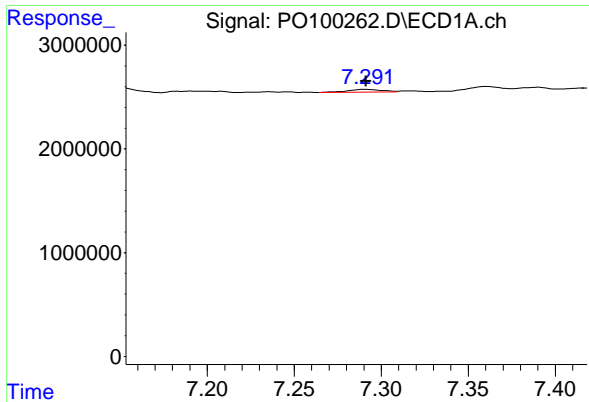
#30 AR-1254-5

R.T.: 7.858 min  
 Delta R.T.: 0.020 min  
 Response: 2117574  
 Conc: 49.47 ng/ml



#30 AR-1254-5

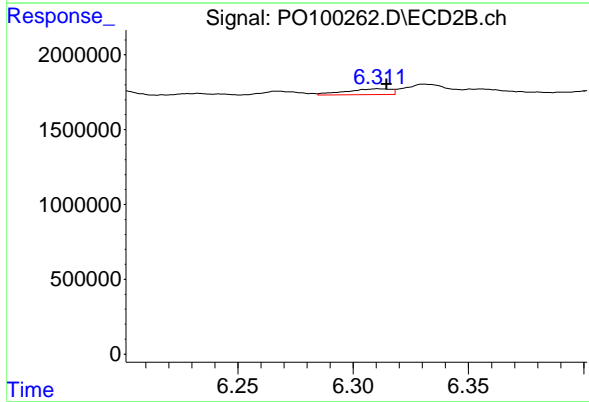
R.T.: 6.829 min  
 Delta R.T.: -0.006 min  
 Response: 2614040  
 Conc: 36.12 ng/ml



#31 AR-1260-1

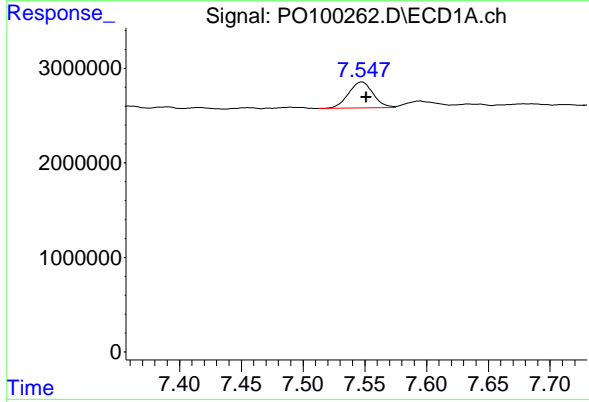
R.T.: 7.291 min  
 Delta R.T.: 0.000 min  
 Response: 368924  
 Conc: 6.93 ng/ml

Instrument :  
 ECD\_O  
 ClientSampleId :  
 SPRING-VALLEY-TP-2



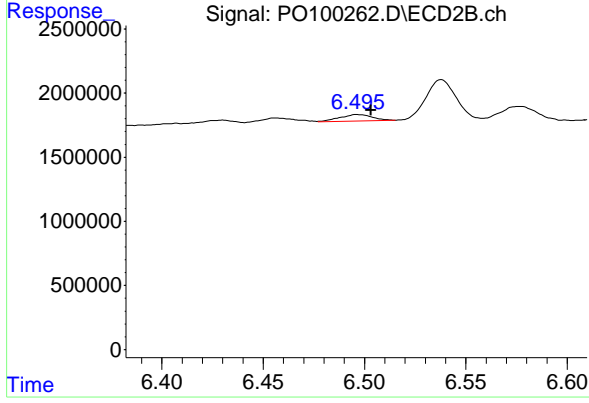
#31 AR-1260-1

R.T.: 6.311 min  
 Delta R.T.: -0.003 min  
 Response: 526962  
 Conc: 9.12 ng/ml



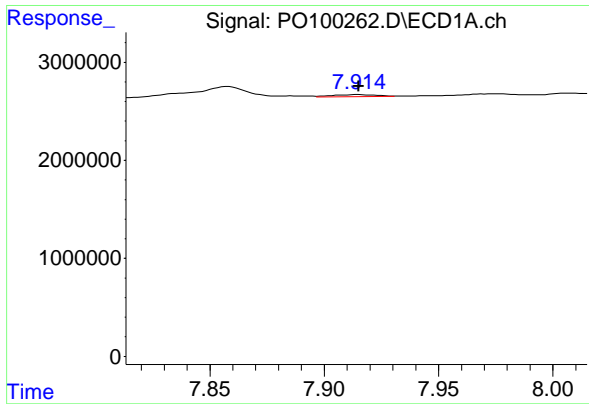
#32 AR-1260-2

R.T.: 7.548 min  
 Delta R.T.: -0.004 min  
 Response: 3809197  
 Conc: 72.01 ng/ml



#32 AR-1260-2

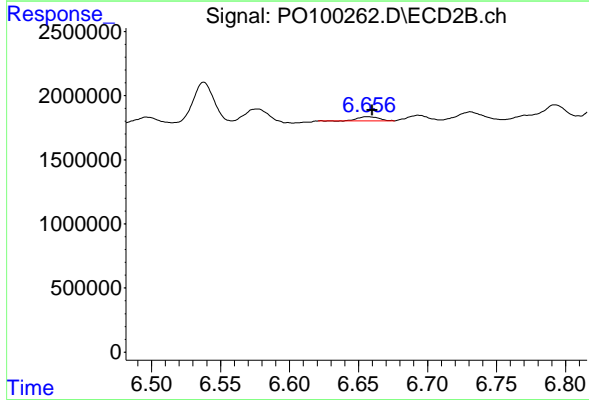
R.T.: 6.496 min  
 Delta R.T.: -0.007 min  
 Response: 565692  
 Conc: 8.52 ng/ml



#33 AR-1260-3

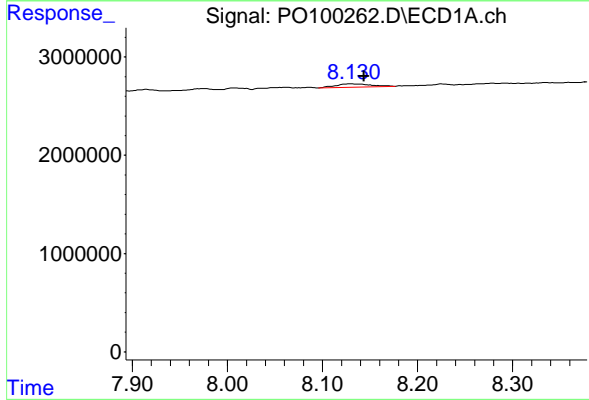
R.T.: 7.915 min  
 Delta R.T.: 0.000 min  
 Response: 267980  
 Conc: 7.51 ng/ml

Instrument :  
 ECD\_O  
 ClientSampleId :  
 SPRING-VALLEY-TP-2



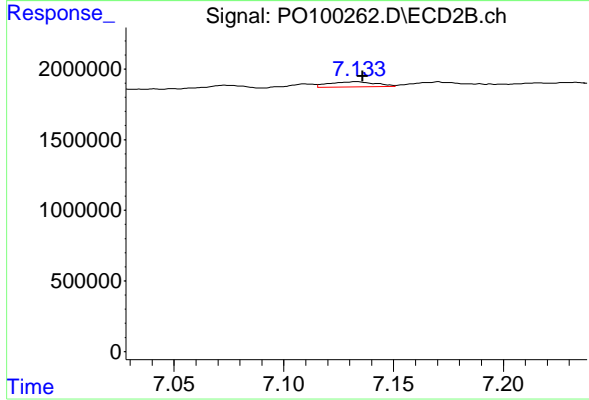
#33 AR-1260-3

R.T.: 6.657 min  
 Delta R.T.: -0.003 min  
 Response: 361234  
 Conc: 5.65 ng/ml



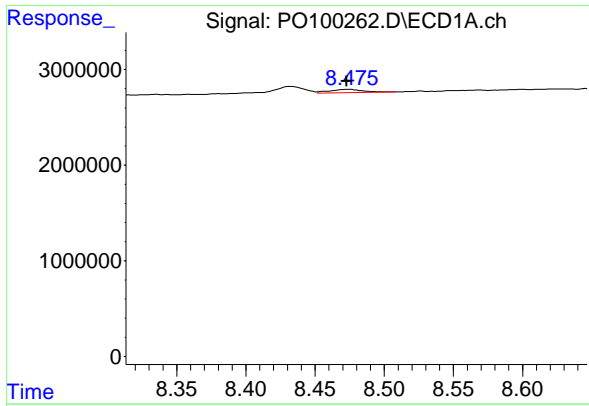
#34 AR-1260-4

R.T.: 8.131 min  
 Delta R.T.: -0.013 min  
 Response: 849987  
 Conc: 20.54 ng/ml



#34 AR-1260-4

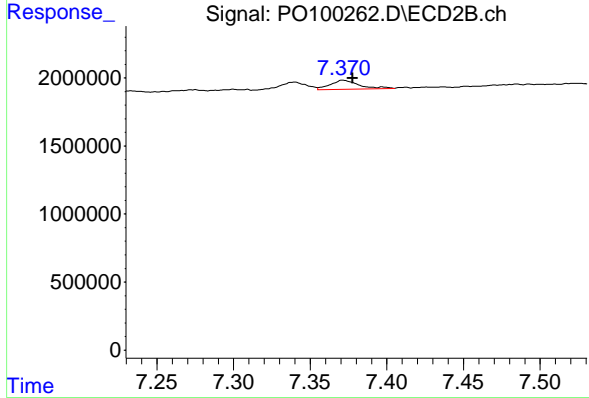
R.T.: 7.133 min  
 Delta R.T.: -0.003 min  
 Response: 560095  
 Conc: 11.11 ng/ml



#35 AR-1260-5

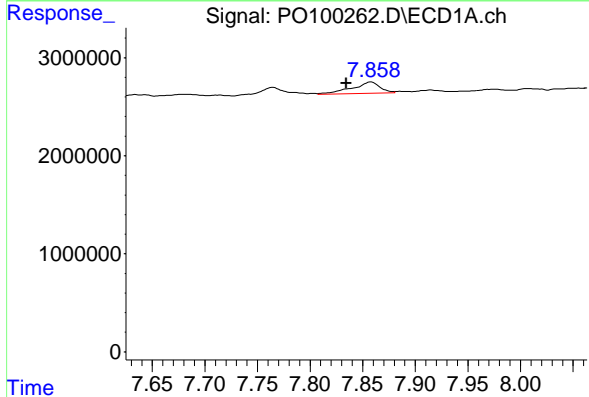
R.T.: 8.475 min  
 Delta R.T.: 0.002 min  
 Response: 567427  
 Conc: 8.49 ng/ml

Instrument :  
 ECD\_O  
 ClientSampleId :  
 SPRING-VALLEY-TP-2



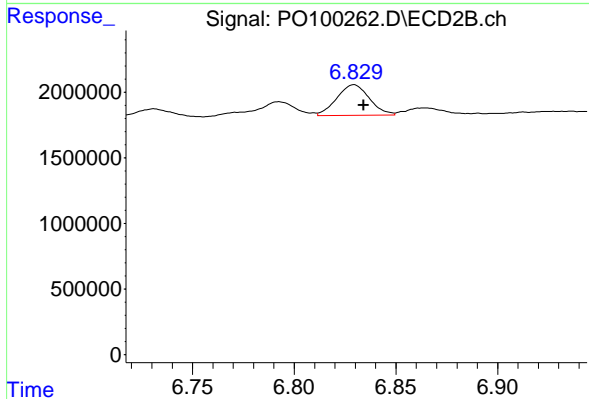
#35 AR-1260-5

R.T.: 7.371 min  
 Delta R.T.: -0.006 min  
 Response: 853183  
 Conc: 7.61 ng/ml



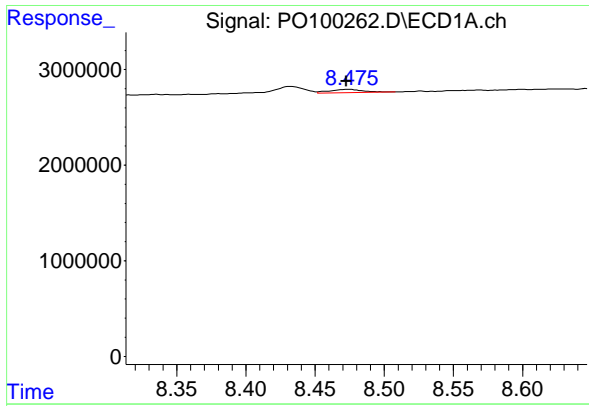
#36 AR-1262-1

R.T.: 7.858 min  
 Delta R.T.: 0.024 min  
 Response: 2117574  
 Conc: 58.54 ng/ml



#36 AR-1262-1

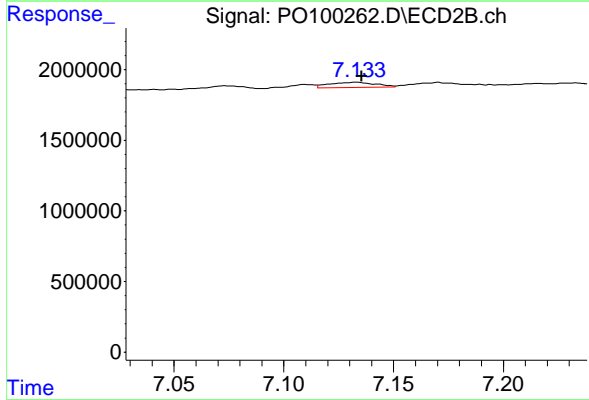
R.T.: 6.829 min  
 Delta R.T.: -0.005 min  
 Response: 2614040  
 Conc: 68.39 ng/ml



#37 AR-1262-2

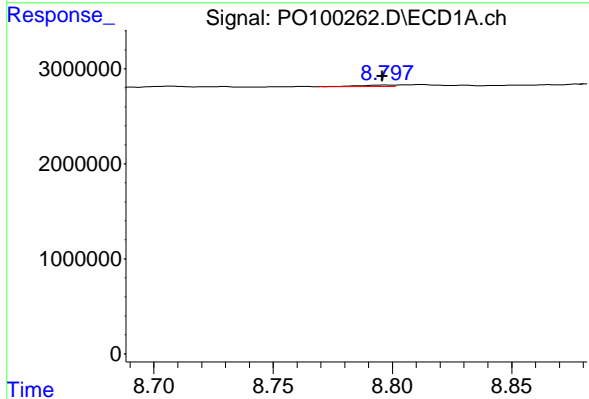
R.T.: 8.475 min  
 Delta R.T.: 0.002 min  
 Response: 567427  
 Conc: 6.68 ng/ml

Instrument :  
 ECD\_O  
 ClientSampleId :  
 SPRING-VALLEY-TP-2



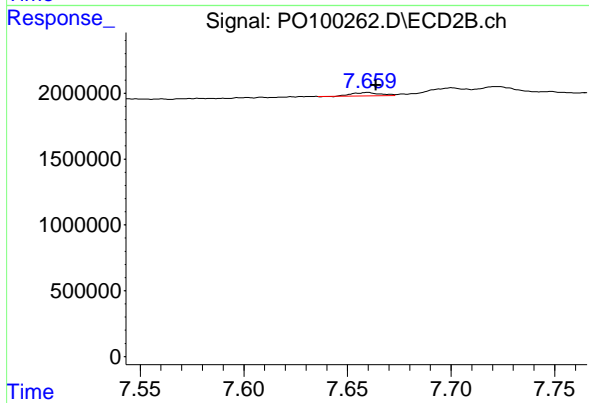
#37 AR-1262-2

R.T.: 7.133 min  
 Delta R.T.: -0.002 min  
 Response: 560095  
 Conc: 7.43 ng/ml



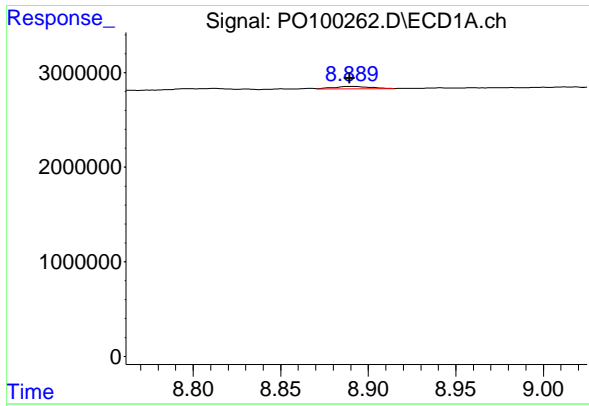
#38 AR-1262-3

R.T.: 8.798 min  
 Delta R.T.: 0.002 min  
 Response: 133970  
 Conc: 2.22 ng/ml



#38 AR-1262-3

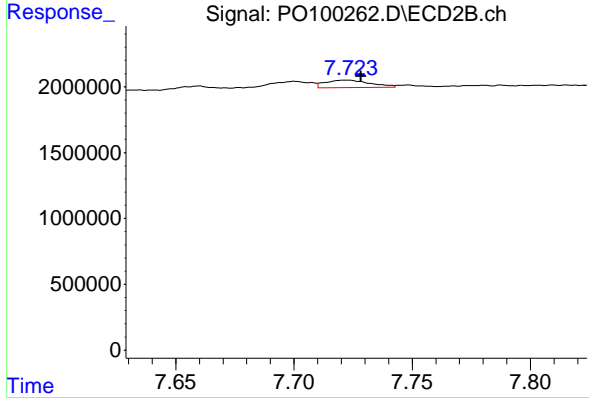
R.T.: 7.660 min  
 Delta R.T.: -0.004 min  
 Response: 214307  
 Conc: 3.68 ng/ml



#39 AR-1262-4

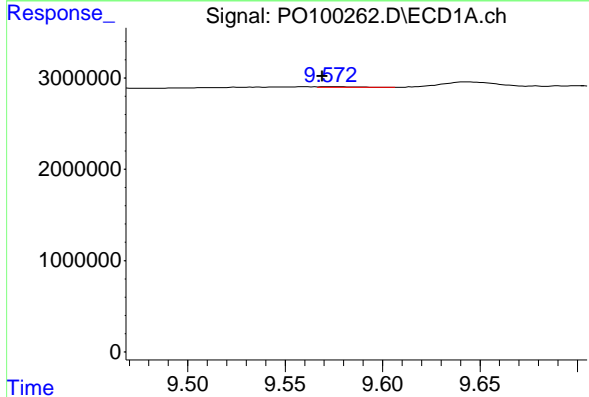
R.T.: 8.890 min  
 Delta R.T.: 0.000 min  
 Response: 383475  
 Conc: 7.95 ng/ml

Instrument :  
 ECD\_O  
 ClientSampleId :  
 SPRING-VALLEY-TP-2



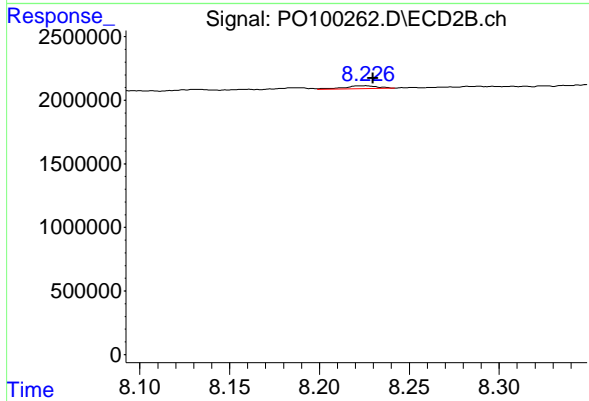
#39 AR-1262-4

R.T.: 7.722 min  
 Delta R.T.: -0.006 min  
 Response: 744812  
 Conc: 7.25 ng/ml



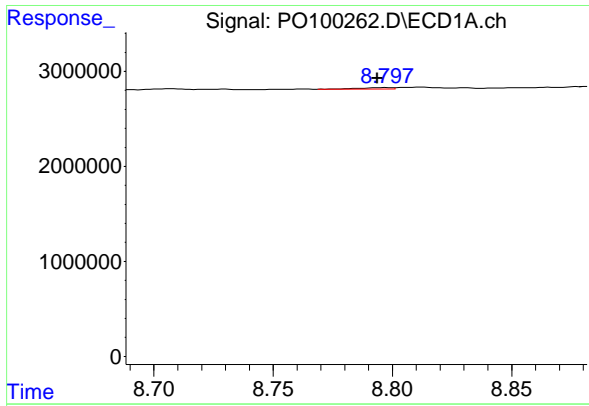
#40 AR-1262-5

R.T.: 9.572 min  
 Delta R.T.: 0.003 min  
 Response: 81420  
 Conc: 3.12 ng/ml



#40 AR-1262-5

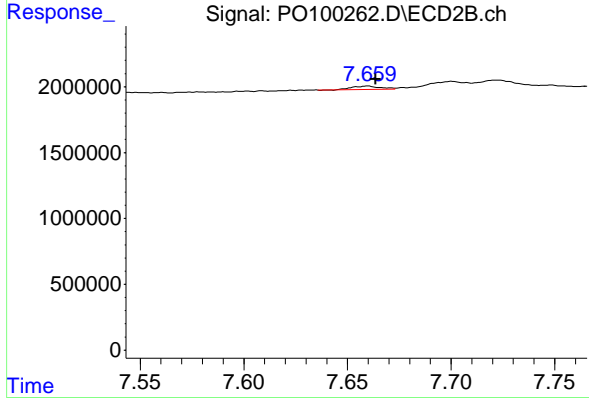
R.T.: 8.226 min  
 Delta R.T.: -0.004 min  
 Response: 319609  
 Conc: 7.33 ng/ml



#41 AR-1268-1

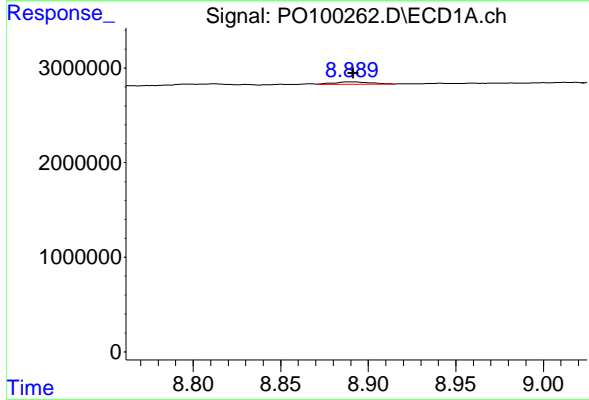
R.T.: 8.798 min  
 Delta R.T.: 0.004 min  
 Response: 133970  
 Conc: 1.21 ng/ml

Instrument :  
 ECD\_O  
 ClientSampleId :  
 SPRING-VALLEY-TP-2



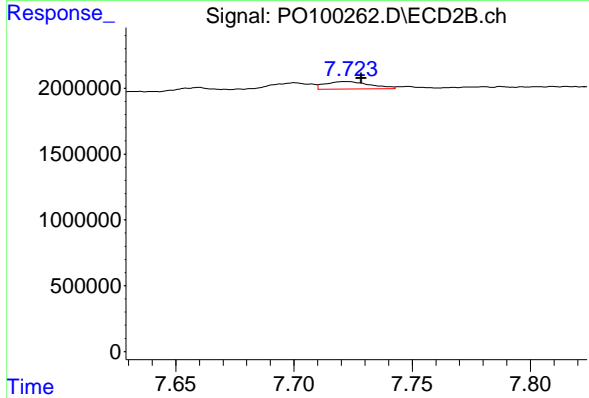
#41 AR-1268-1

R.T.: 7.660 min  
 Delta R.T.: -0.004 min  
 Response: 214307  
 Conc: 1.29 ng/ml



#42 AR-1268-2

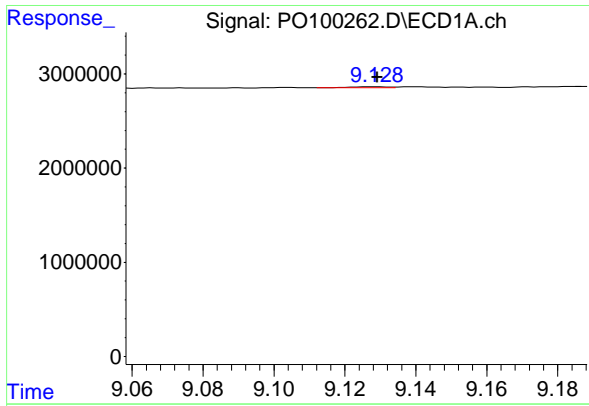
R.T.: 8.890 min  
 Delta R.T.: -0.002 min  
 Response: 383475  
 Conc: 3.98 ng/ml



#42 AR-1268-2

R.T.: 7.722 min  
 Delta R.T.: -0.006 min  
 Response: 744812  
 Conc: 4.88 ng/ml

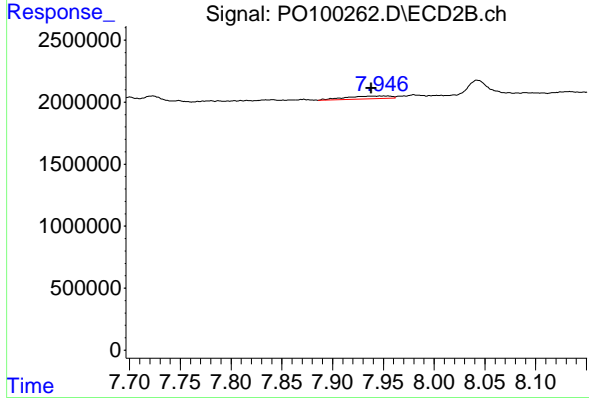




#43 AR-1268-3

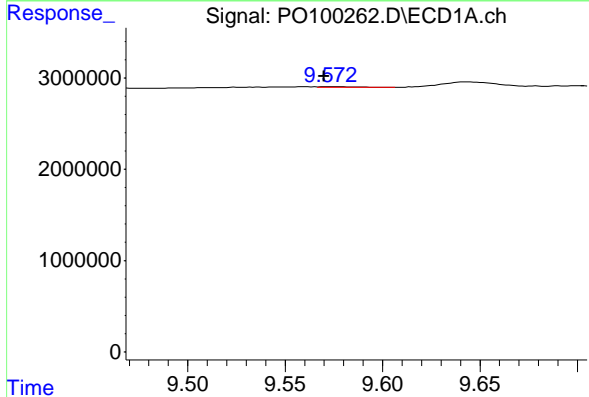
R.T.: 9.129 min  
 Delta R.T.: 0.000 min  
 Response: 63028  
 Conc: 0.70 ng/ml

Instrument :  
 ECD\_O  
 ClientSampleId :  
 SPRING-VALLEY-TP-2



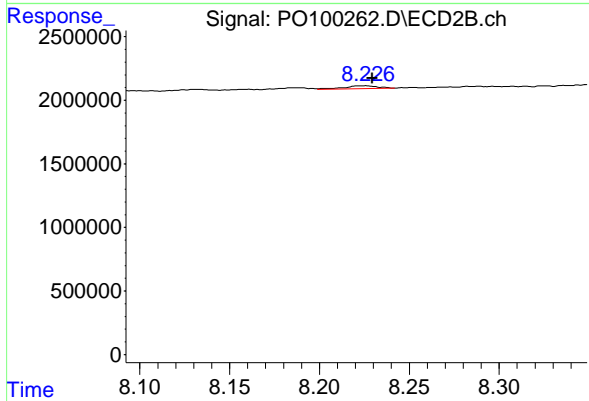
#43 AR-1268-3

R.T.: 7.955 min  
 Delta R.T.: 0.017 min  
 Response: 676460  
 Conc: 4.72 ng/ml



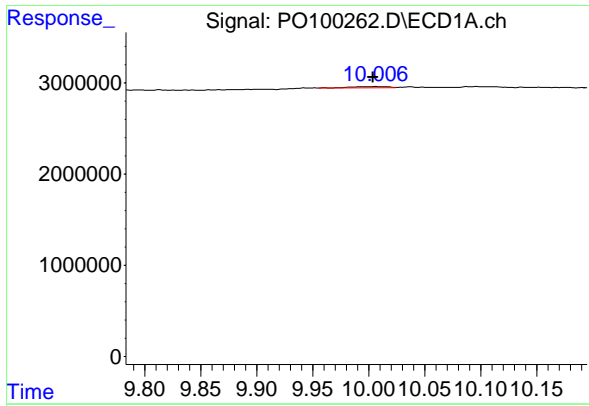
#44 AR-1268-4

R.T.: 9.572 min  
 Delta R.T.: 0.002 min  
 Response: 81420  
 Conc: 2.86 ng/ml



#44 AR-1268-4

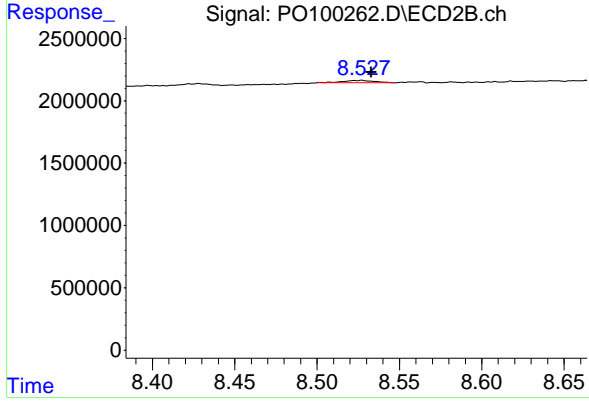
R.T.: 8.226 min  
 Delta R.T.: -0.004 min  
 Response: 319609  
 Conc: 6.80 ng/ml



#45 AR-1268-5

R.T.: 10.007 min  
 Delta R.T.: 0.003 min  
 Response: 283517  
 Conc: 1.13 ng/ml

Instrument : ECD\_O  
 ClientSampleId : SPRING-VALLEY-TP-2



#45 AR-1268-5

R.T.: 8.527 min  
 Delta R.T.: -0.006 min  
 Response: 255147  
 Conc: 0.64 ng/ml