

Data Path : Z:\pestpcbsrv\HPCHEM1\ECD_0\Data\P0120423\
 Data File : P0100278.D
 Signal(s) : Signal #1: ECD1A.ch Signal #2: ECD2B.ch
 Acq On : 04 Dec 2023 23:47
 Operator : YP/AJ
 Sample : I.BLK
 Misc :
 ALS Vial : 2 Sample Multiplier: 1

Instrument :
 ECD_0
 ClientSampleId :

Integration File signal 1: autoint1.e
 Integration File signal 2: autoint2.e
 Quant Time: Dec 05 00:14:00 2023
 Quant Method : Z:\pestpcbsrv\HPCHEM1\ECD_0\methods\P0112123.M
 Quant Title : GC EXTRACTABLES
 QLast Update : Tue Nov 21 15:58:40 2023
 Response via : Initial Calibration
 Integrator: ChemStation

Volume Inj. : 2 µl
 Signal #1 Phase : ZB-MR2 Signal #2 Phase: ZB-MR2
 Signal #1 Info : 30Mx0.32mmx 0.50µ Signal #2 Info : 30M x 0.32mm x 0.25µm

Compound	RT#1	RT#2	Resp#1	Resp#2	ng/ml	ng/ml

System Monitoring Compounds						
1) SA Tetrachlo...	4.480	3.703	43364103	40008412	25.406	26.674
2) SA Decachlor...	10.359	8.794	25811695	38047554	35.536	34.001
Target Compounds						
3) L1 AR-1016-1	5.657	4.808	570406	211289	13.257	6.691 #
4) L1 AR-1016-2	5.691	4.846	174257	70810	2.692	1.638 #
5) L1 AR-1016-3	5.757	5.017	190851	304983	4.379	13.151 #
6) L1 AR-1016-4	5.850	5.056	260113	907105	7.880	44.247 #
7) L1 AR-1016-5	6.152	5.260	169488	471559	5.398	18.491 #
8) L2 AR-1221-1	4.695	3.933	32039	260074	1.554	13.681 #
9) L2 AR-1221-2	4.793	4.009	1017477	680332	67.364	52.207
10) L2 AR-1221-3	4.869	4.084	52831	82204	1.177	2.288 #
11) L3 AR-1232-1	4.845	4.084	39263	82204	1.100	2.801 #
12) L3 AR-1232-2	5.389	4.846	27243	70810	1.565	3.571 #
13) L3 AR-1232-3	5.691	5.017	174257	304983	6.149	29.429 #
14) L3 AR-1232-4	5.850	5.100	260113	1453322	18.724	146.212 #
15) L3 AR-1232-5	5.952	5.260	243061	471559	19.806	43.662 #
16) L4 AR-1242-1	5.657	4.808	570406	211289	16.465	8.040 #
17) L4 AR-1242-2	5.691	4.846	174257	70810	3.321	2.014 #
18) L4 AR-1242-3	5.757	5.017	190851	304983	5.484	15.926 #
19) L4 AR-1242-4	5.850	5.100	260113	1453322	9.894	72.154 #
20) L4 AR-1242-5	6.607	5.645	584578	4832893	26.145	206.836 #
21) L5 AR-1248-1	5.657	4.808	570406	211289	22.064	10.569 #
22) L5 AR-1248-2	5.952	5.056	243061	907105	5.943	32.419 #
23) L5 AR-1248-3	6.152	5.100	169488	1453322	3.957	50.326 #
24) L5 AR-1248-4	6.562	5.260	432375	471559	11.471	14.381 #
25) L5 AR-1248-5	6.607	5.645	584578	4832893	15.828	161.788 #
26) L6 AR-1254-1	6.537	5.645	2709007	4832893	56.258	93.232 #
27) L6 AR-1254-2	6.752	5.780	70141	3401731	1.023	73.049 #
28) L6 AR-1254-3	7.126	6.165	3211268	3106755	50.406	39.835
29) L6 AR-1254-4	7.410	6.420	665713	508432	17.610	11.914 #
30) L6 AR-1254-5	7.841	6.837	291788	48026	6.817	0.664 #
31) L7 AR-1260-1	7.293	6.318	330396	273193	6.205	4.728
32) L7 AR-1260-2	7.538	6.485	566841	2262076	10.716	34.059 #
33) L7 AR-1260-3	7.909	6.684	121601	136181	3.409	2.128 #
34) L7 AR-1260-4	8.134	7.154	47832	151593	1.156	3.006 #
35) L7 AR-1260-5	8.484	7.355	180290	175304	2.699	1.564 #
36) L8 AR-1262-1	7.841	6.837	291788	48026	8.067	1.257 #
37) L8 AR-1262-2	8.484	7.154	180290	151593	2.123	2.010
38) L8 AR-1262-3	8.800	7.669	39910	440617	0.663	7.565 #
39) L8 AR-1262-4	8.900	7.719	22855	275211	0.474	2.678 #
40) L8 AR-1262-5	9.569	8.226	27563	133205	1.056	3.057 #
41) L9 AR-1268-1	8.791	7.669	27806	440617	0.252	2.653 #

Data Path : Z:\pestpcbsrv\HPCHEM1\ECD_O\Data\P0120423\
 Data File : P0100278.D
 Signal(s) : Signal #1: ECD1A.ch Signal #2: ECD2B.ch
 Acq On : 04 Dec 2023 23:47
 Operator : YP/AJ
 Sample : I.BLK
 Misc :
 ALS Vial : 2 Sample Multiplier: 1

Instrument :
 ECD_O
 ClientSampleId :

Integration File signal 1: autoint1.e
 Integration File signal 2: autoint2.e
 Quant Time: Dec 05 00:14:00 2023
 Quant Method : Z:\pestpcbsrv\HPCHEM1\ECD_O\methods\P0112123.M
 Quant Title : GC EXTRACTABLES
 QLast Update : Tue Nov 21 15:58:40 2023
 Response via : Initial Calibration
 Integrator: ChemStation

Volume Inj. : 2 µl
 Signal #1 Phase : ZB-MR1 Signal #2 Phase: ZB-MR2
 Signal #1 Info : 30Mx0.32mmx 0.50µ Signal #2 Info : 30M x 0.32mm x 0.25µm

	Compound	RT#1	RT#2	Resp#1	Resp#2	ng/ml	ng/ml
42)	L9 AR-1268-2	8.900	7.719	22855	275211	0.237	1.803 #
43)	L9 AR-1268-3	9.130	7.932	40809	423899	0.452	2.958 #
44)	L9 AR-1268-4	9.569	8.226	27563	133205	0.969	2.835 #
45)	L9 AR-1268-5	10.010	8.529	120706	230895	0.480	0.580

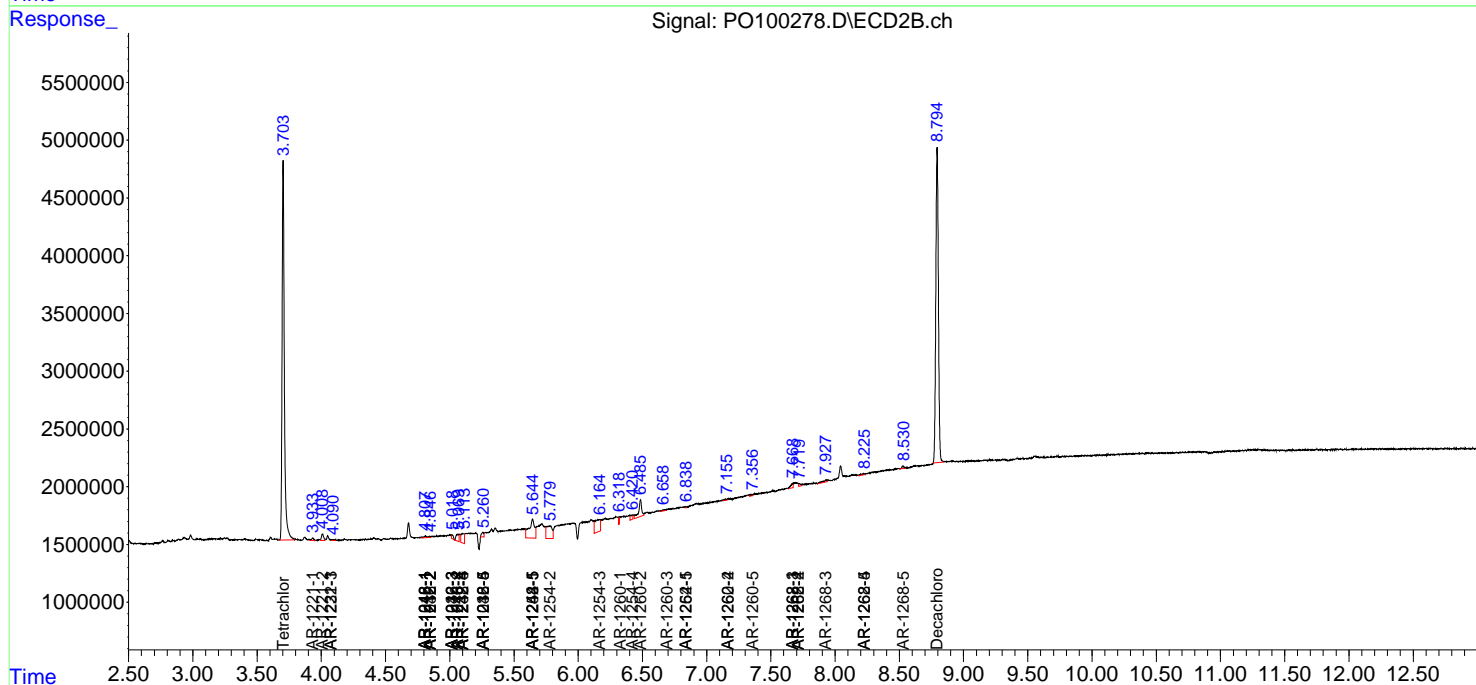
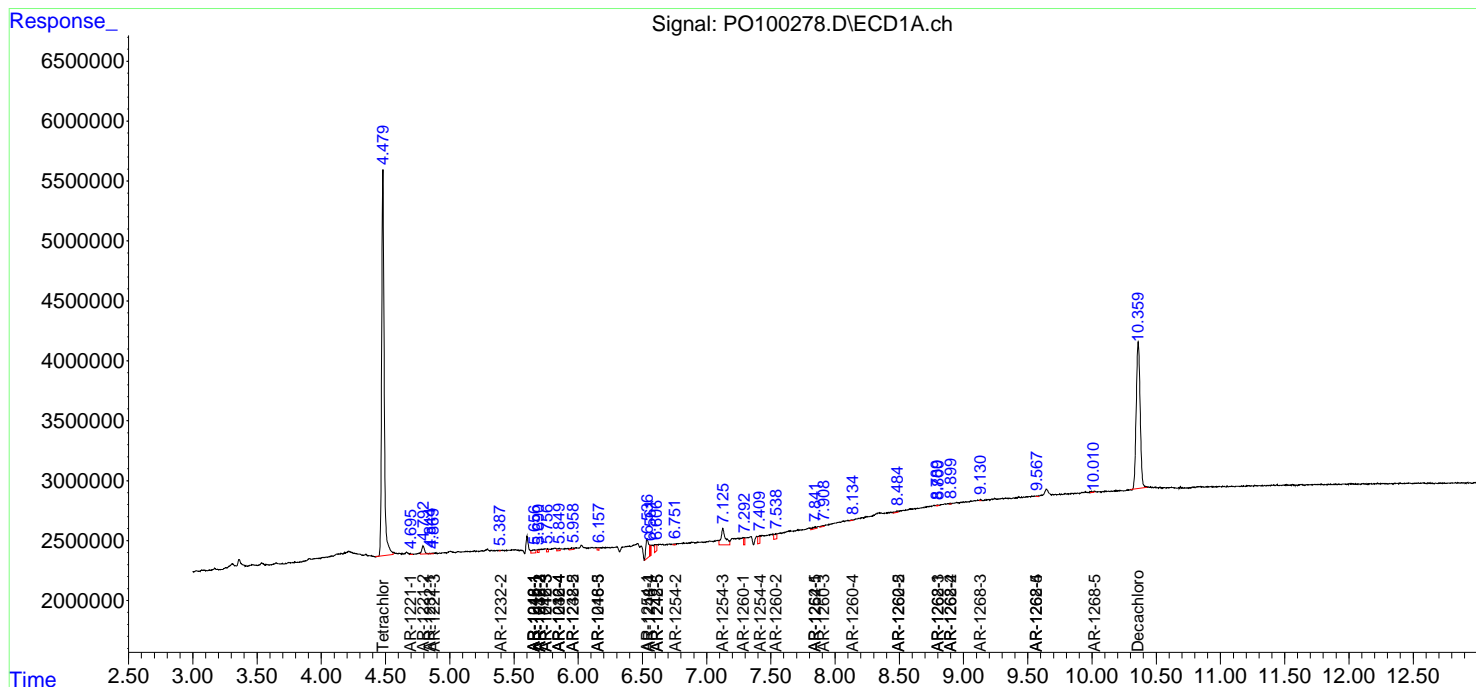
(f)=RT Delta > 1/2 Window (#)=Amounts differ by > 25% (m)=manual int.

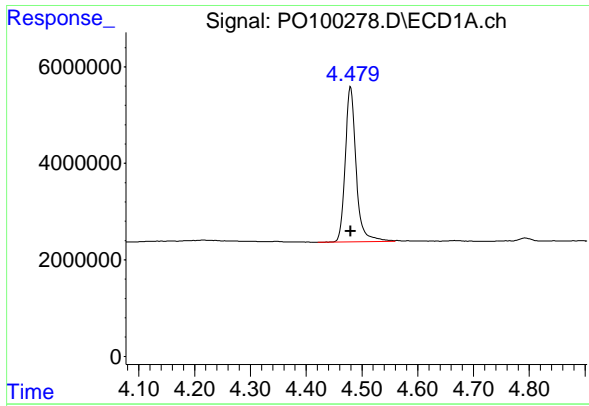
Data Path : Z:\pestpcbsrv\HPCHEM1\ECD_O\Data\PO120423\
 Data File : PO100278.D
 Signal(s) : Signal #1: ECD1A.ch Signal #2: ECD2B.ch
 Acq On : 04 Dec 2023 23:47
 Operator : YP/AJ
 Sample : I.BLK
 Misc :
 ALS Vial : 2 Sample Multiplier: 1

Instrument :
 ECD_O
 ClientSampleId :

Integration File signal 1: autoint1.e
 Integration File signal 2: autoint2.e
 Quant Time: Dec 05 00:14:00 2023
 Quant Method : Z:\pestpcbsrv\HPCHEM1\ECD_O\methods\PO112123.M
 Quant Title : GC EXTRACTABLES
 QLast Update : Tue Nov 21 15:58:40 2023
 Response via : Initial Calibration
 Integrator: ChemStation

Volume Inj. : 2 µl
 Signal #1 Phase : ZB-MR1 Signal #2 Phase: ZB-MR2
 Signal #1 Info : 30Mx0.32mmx 0.50µ Signal #2 Info : 30M x 0.32mm x 0.25µm

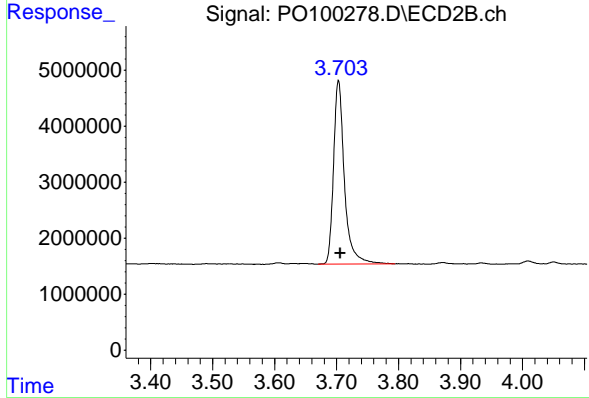




#1 Tetrachloro-m-xylene

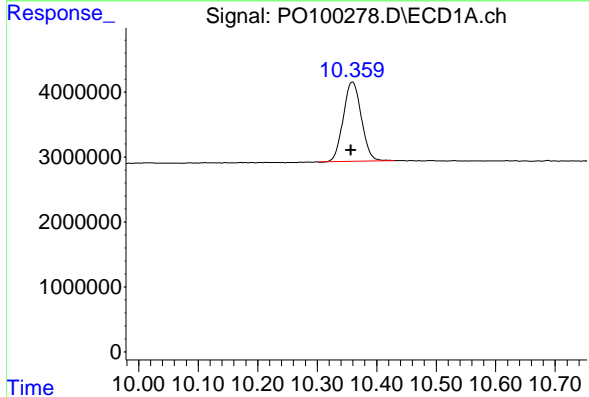
R.T.: 4.480 min
 Delta R.T.: 0.000 min
 Response: 43364103
 Conc: 25.41 ng/ml

Instrument :
 ECD_O
 ClientSampleId :



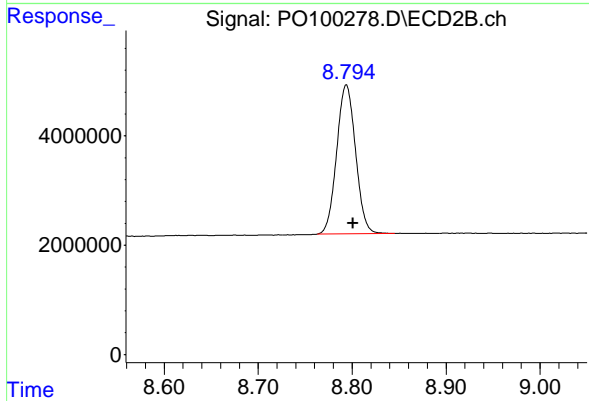
#1 Tetrachloro-m-xylene

R.T.: 3.703 min
 Delta R.T.: -0.003 min
 Response: 40008412
 Conc: 26.67 ng/ml



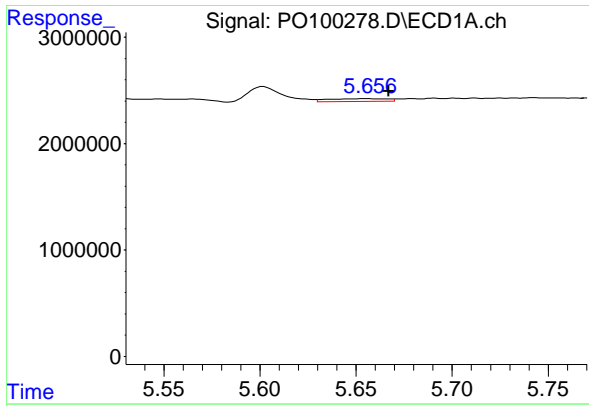
#2 Decachlorobiphenyl

R.T.: 10.359 min
 Delta R.T.: 0.002 min
 Response: 25811695
 Conc: 35.54 ng/ml



#2 Decachlorobiphenyl

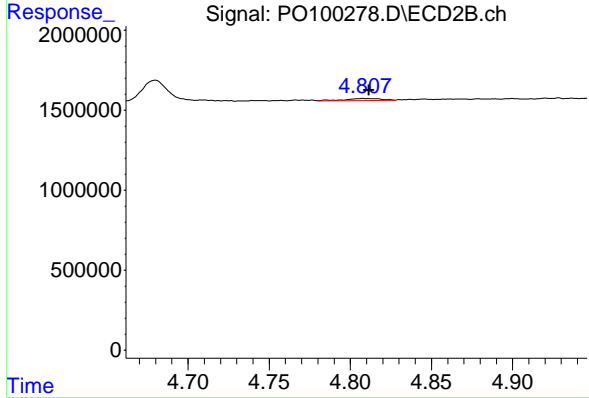
R.T.: 8.794 min
 Delta R.T.: -0.007 min
 Response: 38047554
 Conc: 34.00 ng/ml



#3 AR-1016-1

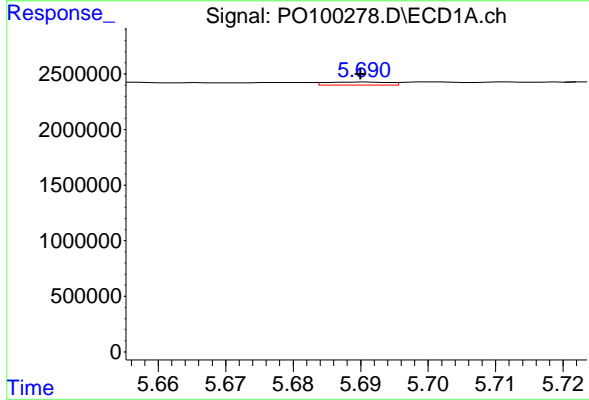
R.T.: 5.657 min
 Delta R.T.: -0.011 min
 Response: 570406
 Conc: 13.26 ng/ml

Instrument :
 ECD_O
 ClientSampleId :



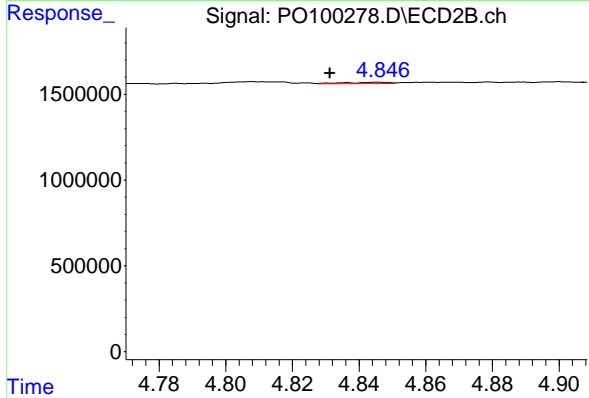
#3 AR-1016-1

R.T.: 4.808 min
 Delta R.T.: -0.003 min
 Response: 211289
 Conc: 6.69 ng/ml



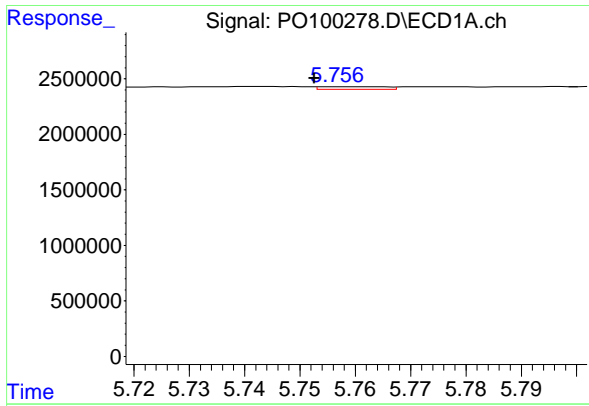
#4 AR-1016-2

R.T.: 5.691 min
 Delta R.T.: 0.000 min
 Response: 174257
 Conc: 2.69 ng/ml



#4 AR-1016-2

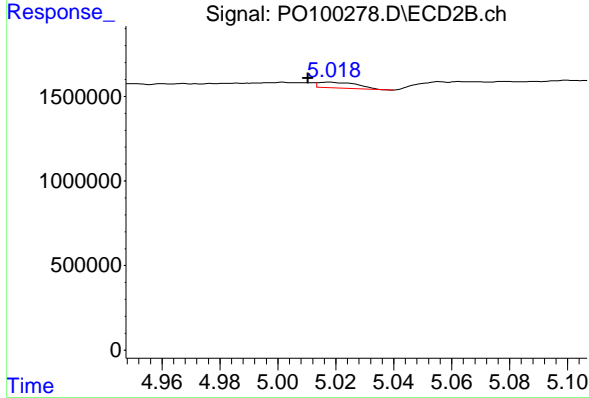
R.T.: 4.846 min
 Delta R.T.: 0.014 min
 Response: 70810
 Conc: 1.64 ng/ml



#5 AR-1016-3

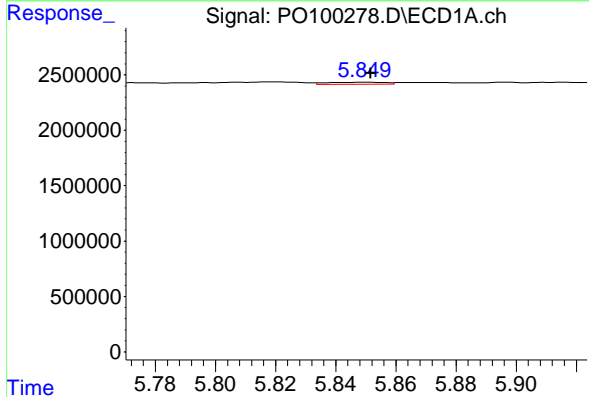
R.T.: 5.757 min
 Delta R.T.: 0.004 min
 Response: 190851
 Conc: 4.38 ng/ml

Instrument :
 ECD_O
 ClientSampleId :



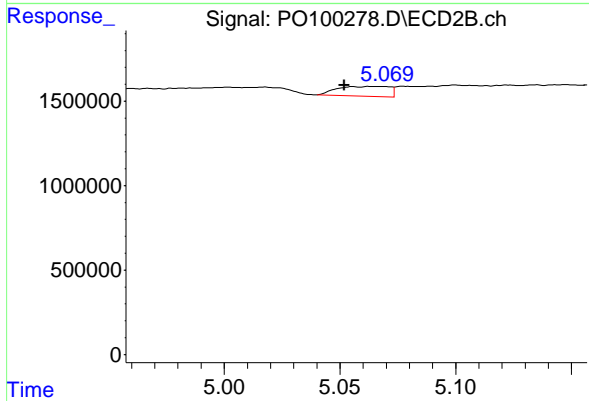
#5 AR-1016-3

R.T.: 5.017 min
 Delta R.T.: 0.007 min
 Response: 304983
 Conc: 13.15 ng/ml



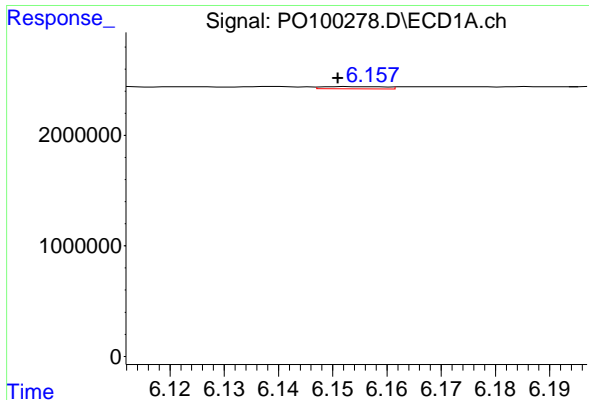
#6 AR-1016-4

R.T.: 5.850 min
 Delta R.T.: -0.002 min
 Response: 260113
 Conc: 7.88 ng/ml



#6 AR-1016-4

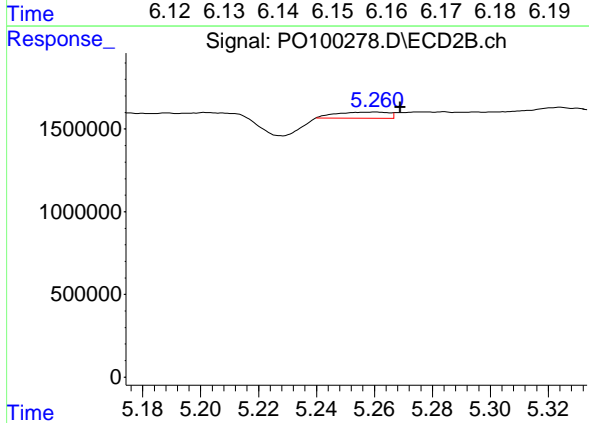
R.T.: 5.056 min
 Delta R.T.: 0.004 min
 Response: 907105
 Conc: 44.25 ng/ml



#7 AR-1016-5

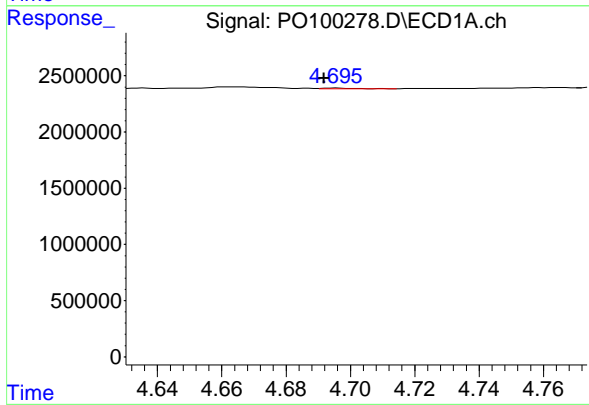
R.T.: 6.152 min
 Delta R.T.: 0.000 min
 Response: 169488
 Conc: 5.40 ng/ml

Instrument : ECD_O
 ClientSampleId :



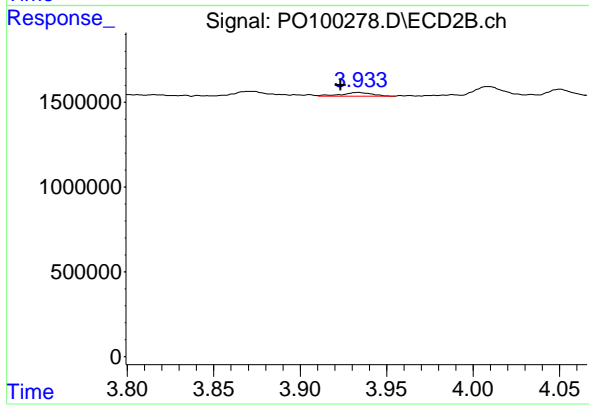
#7 AR-1016-5

R.T.: 5.260 min
 Delta R.T.: -0.009 min
 Response: 471559
 Conc: 18.49 ng/ml



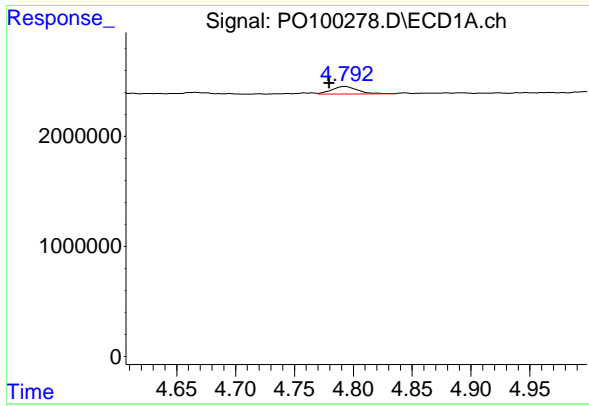
#8 AR-1221-1

R.T.: 4.695 min
 Delta R.T.: 0.003 min
 Response: 32039
 Conc: 1.55 ng/ml



#8 AR-1221-1

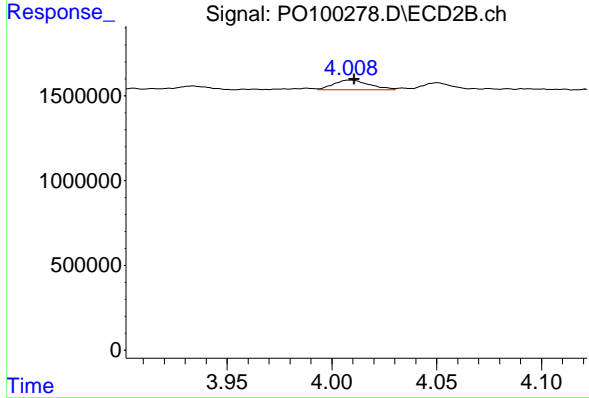
R.T.: 3.933 min
 Delta R.T.: 0.010 min
 Response: 260074
 Conc: 13.68 ng/ml



#9 AR-1221-2

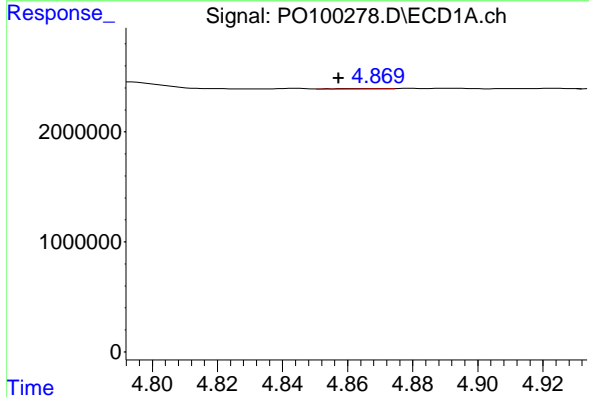
R.T.: 4.793 min
 Delta R.T.: 0.013 min
 Response: 1017477
 Conc: 67.36 ng/ml

Instrument :
 ECD_O
 ClientSampleId :



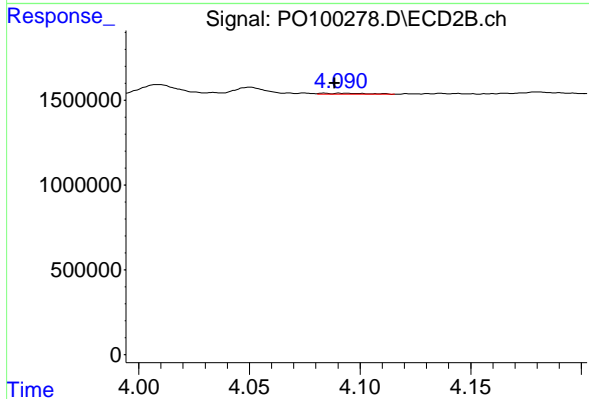
#9 AR-1221-2

R.T.: 4.009 min
 Delta R.T.: -0.002 min
 Response: 680332
 Conc: 52.21 ng/ml



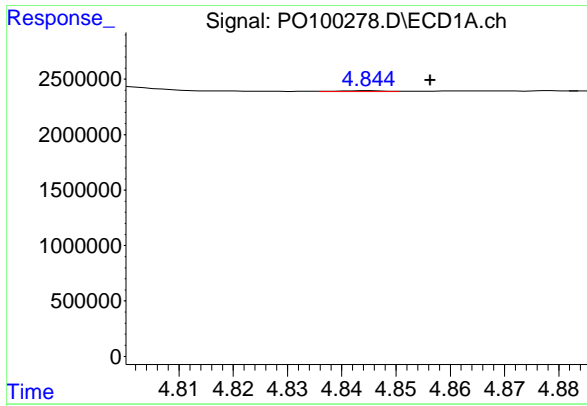
#10 AR-1221-3

R.T.: 4.869 min
 Delta R.T.: 0.012 min
 Response: 52831
 Conc: 1.18 ng/ml



#10 AR-1221-3

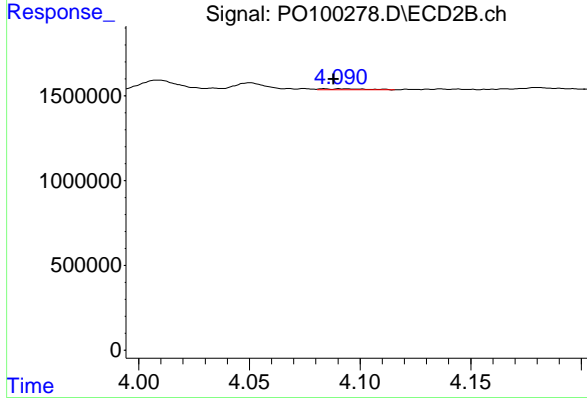
R.T.: 4.084 min
 Delta R.T.: -0.005 min
 Response: 82204
 Conc: 2.29 ng/ml



#11 AR-1232-1

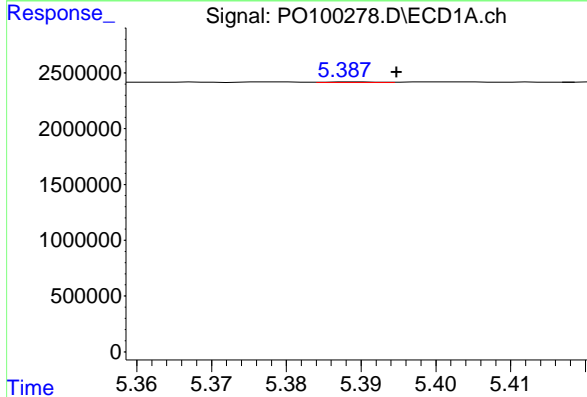
R.T.: 4.845 min
 Delta R.T.: -0.012 min
 Response: 39263
 Conc: 1.10 ng/ml

Instrument :
 ECD_O
 ClientSampleId :



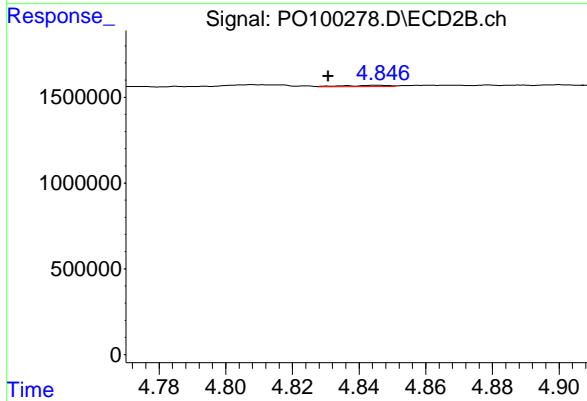
#11 AR-1232-1

R.T.: 4.084 min
 Delta R.T.: -0.004 min
 Response: 82204
 Conc: 2.80 ng/ml



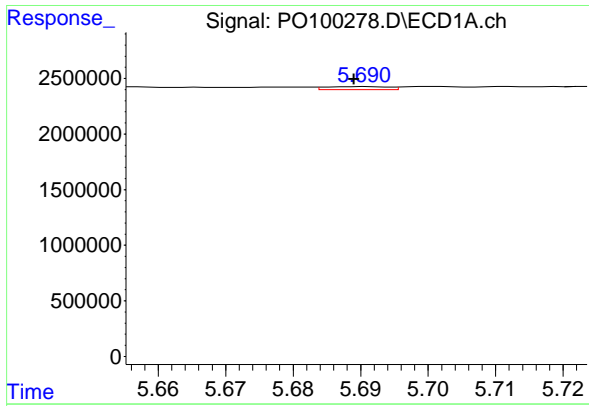
#12 AR-1232-2

R.T.: 5.389 min
 Delta R.T.: -0.006 min
 Response: 27243
 Conc: 1.57 ng/ml



#12 AR-1232-2

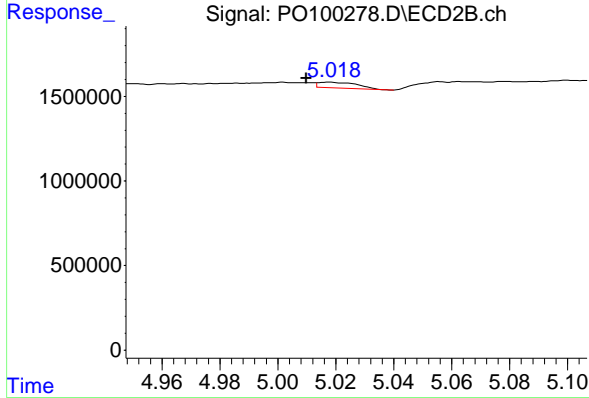
R.T.: 4.846 min
 Delta R.T.: 0.015 min
 Response: 70810
 Conc: 3.57 ng/ml



#13 AR-1232-3

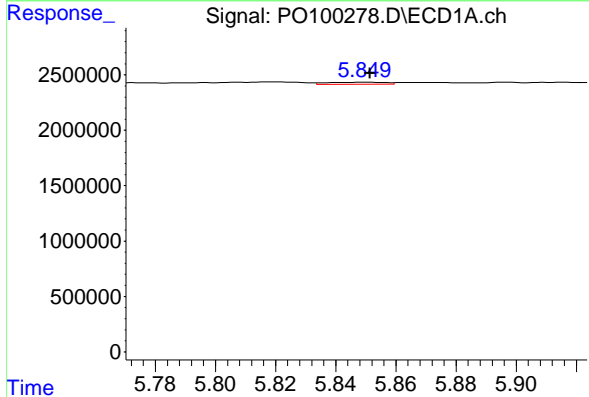
R.T.: 5.691 min
 Delta R.T.: 0.002 min
 Response: 174257
 Conc: 6.15 ng/ml

Instrument :
 ECD_O
 ClientSampleId :



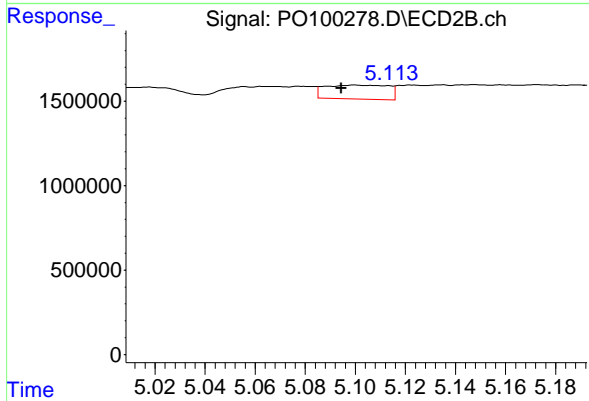
#13 AR-1232-3

R.T.: 5.017 min
 Delta R.T.: 0.008 min
 Response: 304983
 Conc: 29.43 ng/ml



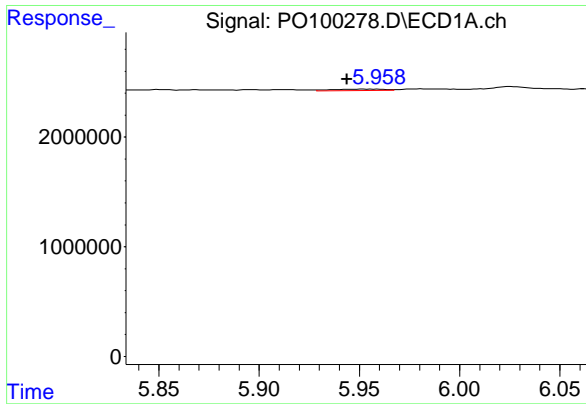
#14 AR-1232-4

R.T.: 5.850 min
 Delta R.T.: -0.002 min
 Response: 260113
 Conc: 18.72 ng/ml



#14 AR-1232-4

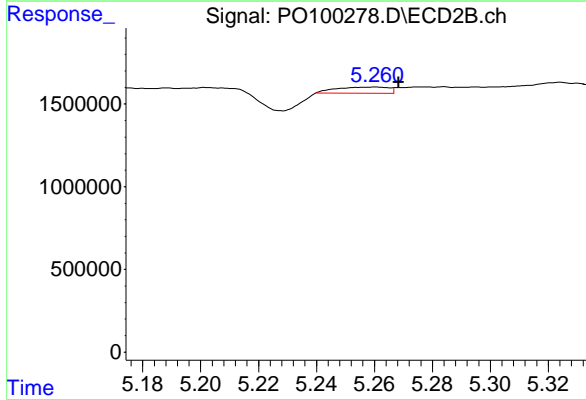
R.T.: 5.100 min
 Delta R.T.: 0.006 min
 Response: 1453322
 Conc: 146.21 ng/ml



#15 AR-1232-5

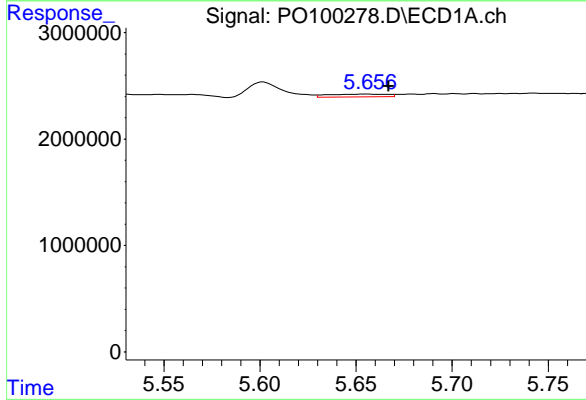
R.T.: 5.952 min
 Delta R.T.: 0.008 min
 Response: 243061
 Conc: 19.81 ng/ml

Instrument :
 ECD_O
 ClientSampleId :



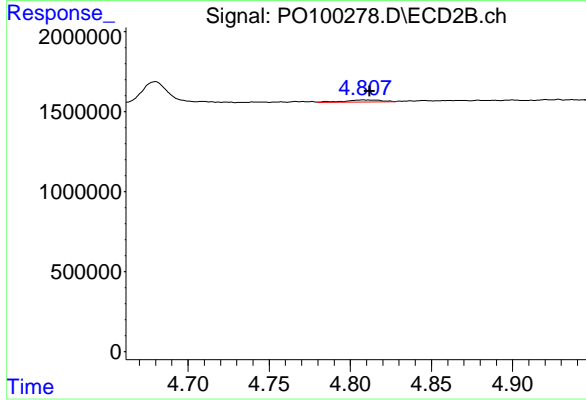
#15 AR-1232-5

R.T.: 5.260 min
 Delta R.T.: -0.008 min
 Response: 471559
 Conc: 43.66 ng/ml



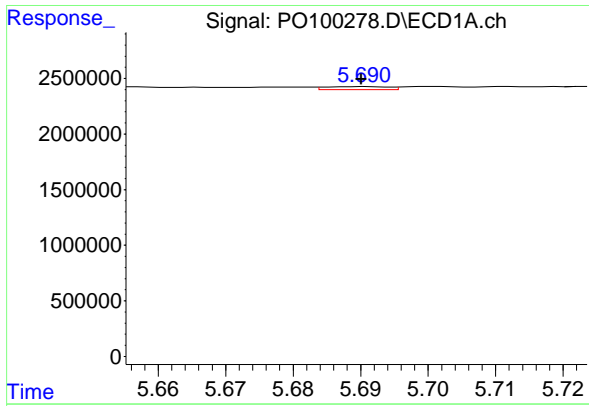
#16 AR-1242-1

R.T.: 5.657 min
 Delta R.T.: -0.011 min
 Response: 570406
 Conc: 16.47 ng/ml



#16 AR-1242-1

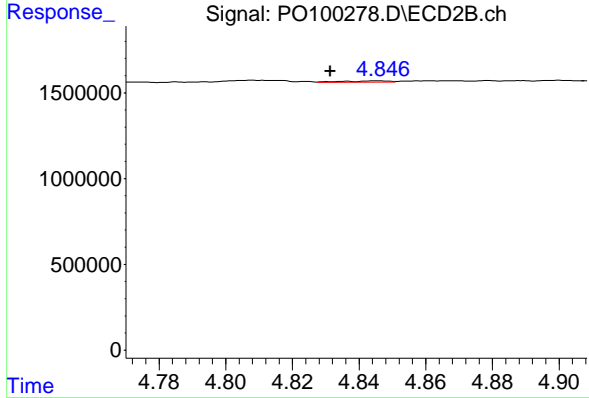
R.T.: 4.808 min
 Delta R.T.: -0.004 min
 Response: 211289
 Conc: 8.04 ng/ml



#17 AR-1242-2

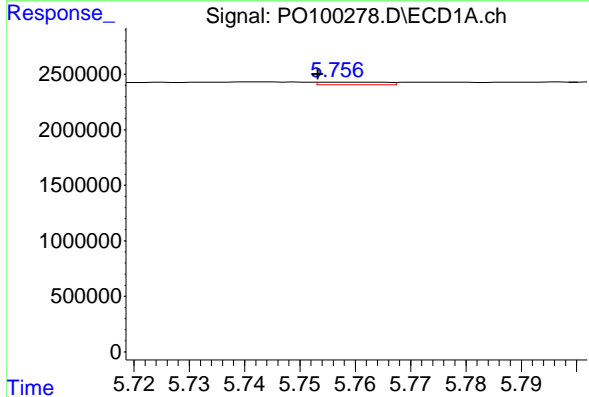
R.T.: 5.691 min
 Delta R.T.: 0.000 min
 Response: 174257
 Conc: 3.32 ng/ml

Instrument :
 ECD_O
 ClientSampleId :



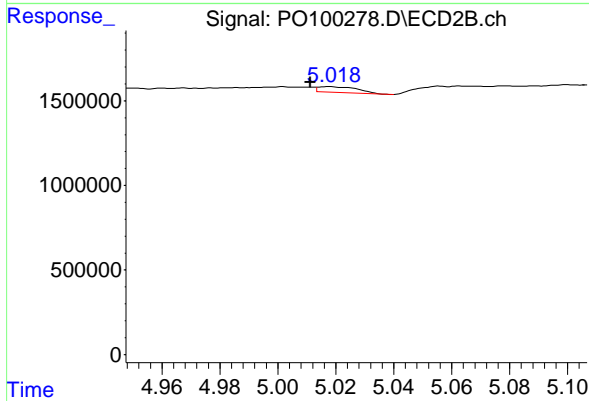
#17 AR-1242-2

R.T.: 4.846 min
 Delta R.T.: 0.014 min
 Response: 70810
 Conc: 2.01 ng/ml



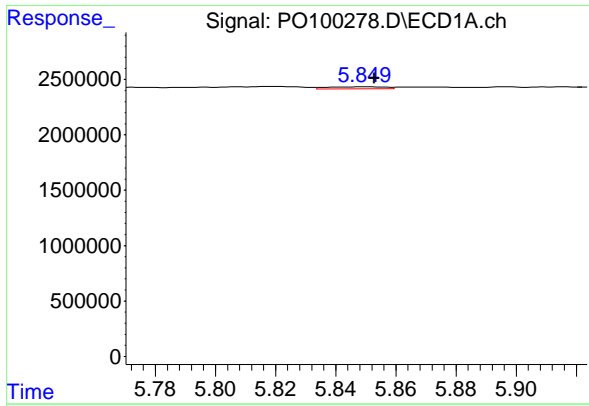
#18 AR-1242-3

R.T.: 5.757 min
 Delta R.T.: 0.003 min
 Response: 190851
 Conc: 5.48 ng/ml



#18 AR-1242-3

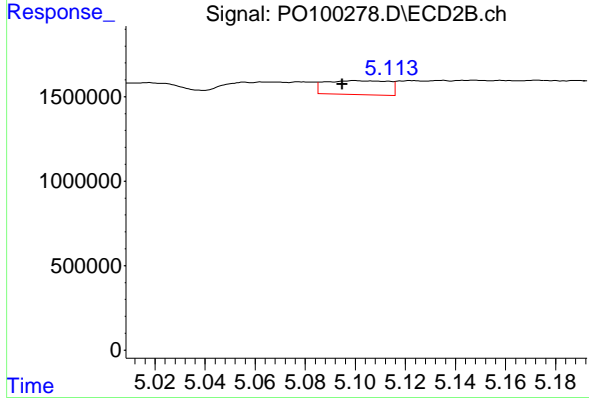
R.T.: 5.017 min
 Delta R.T.: 0.006 min
 Response: 304983
 Conc: 15.93 ng/ml



#19 AR-1242-4

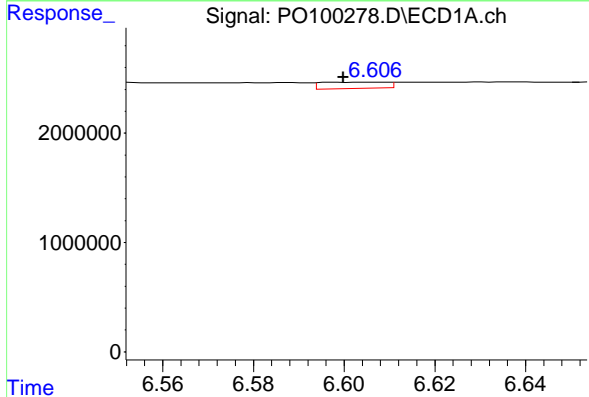
R.T.: 5.850 min
 Delta R.T.: -0.003 min
 Response: 260113
 Conc: 9.89 ng/ml

Instrument : ECD_O
 ClientSampleId :



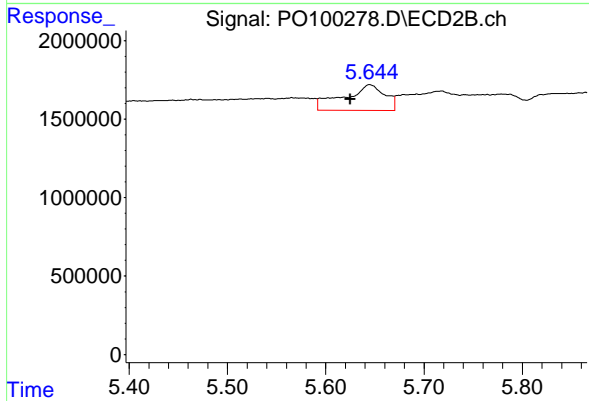
#19 AR-1242-4

R.T.: 5.100 min
 Delta R.T.: 0.005 min
 Response: 1453322
 Conc: 72.15 ng/ml



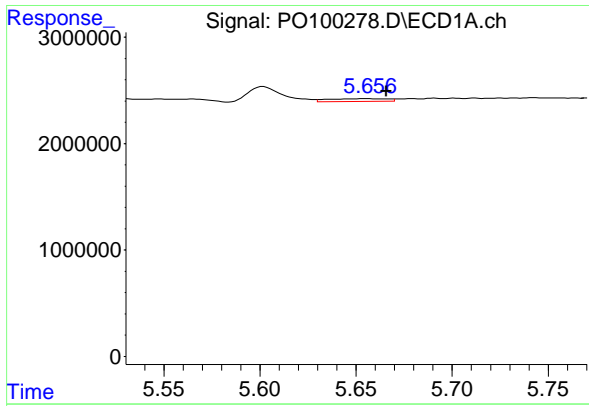
#20 AR-1242-5

R.T.: 6.607 min
 Delta R.T.: 0.007 min
 Response: 584578
 Conc: 26.15 ng/ml



#20 AR-1242-5

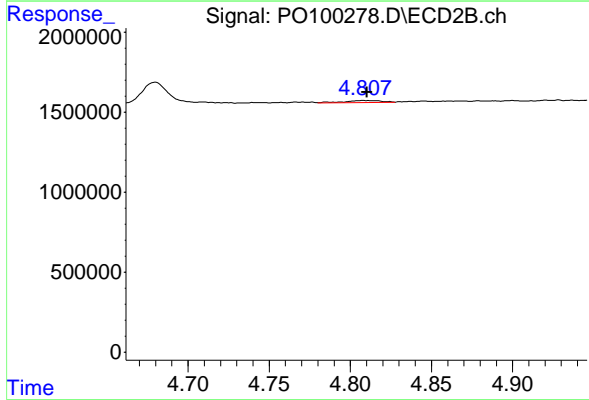
R.T.: 5.645 min
 Delta R.T.: 0.020 min
 Response: 4832893
 Conc: 206.84 ng/ml



#21 AR-1248-1

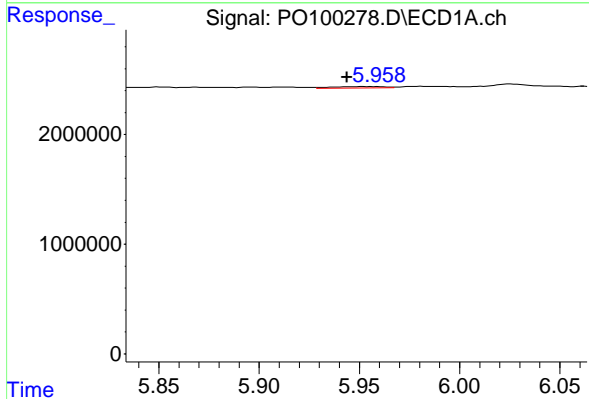
R.T.: 5.657 min
 Delta R.T.: -0.009 min
 Response: 570406
 Conc: 22.06 ng/ml

Instrument :
 ECD_O
 ClientSampleId :



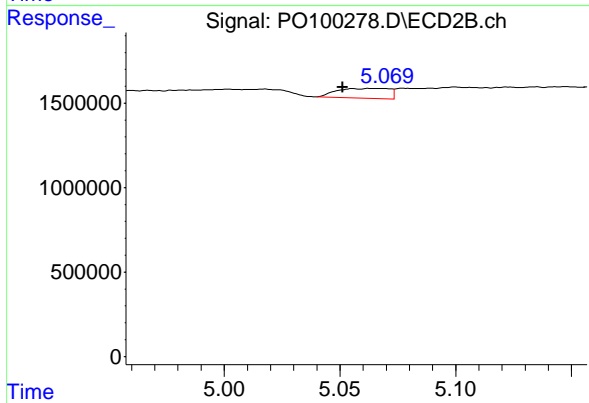
#21 AR-1248-1

R.T.: 4.808 min
 Delta R.T.: -0.002 min
 Response: 211289
 Conc: 10.57 ng/ml



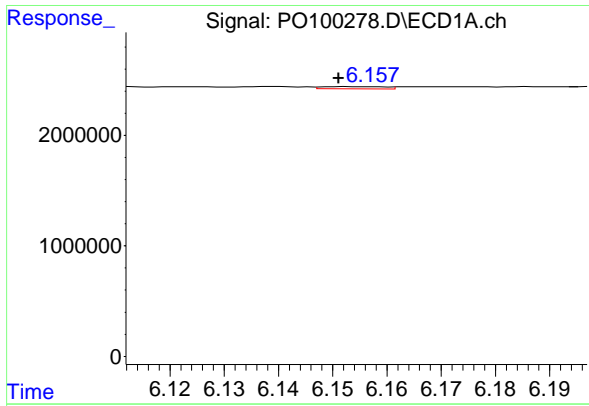
#22 AR-1248-2

R.T.: 5.952 min
 Delta R.T.: 0.008 min
 Response: 243061
 Conc: 5.94 ng/ml



#22 AR-1248-2

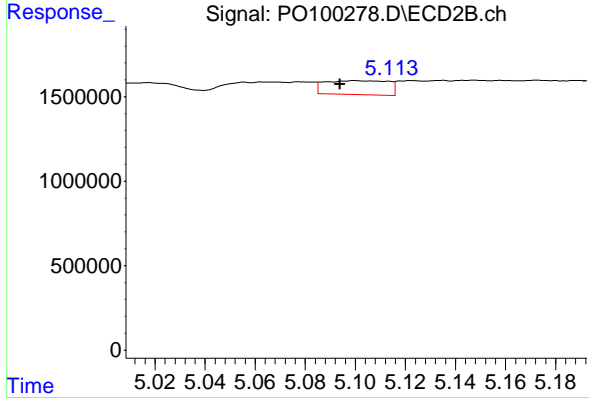
R.T.: 5.056 min
 Delta R.T.: 0.005 min
 Response: 907105
 Conc: 32.42 ng/ml



#23 AR-1248-3

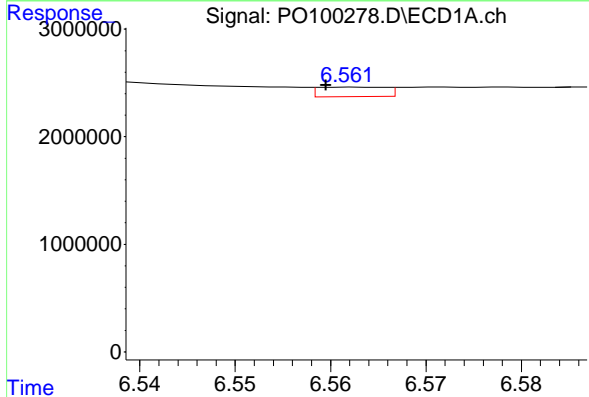
R.T.: 6.152 min
 Delta R.T.: 0.000 min
 Response: 169488
 Conc: 3.96 ng/ml

Instrument :
 ECD_O
 ClientSampleId :



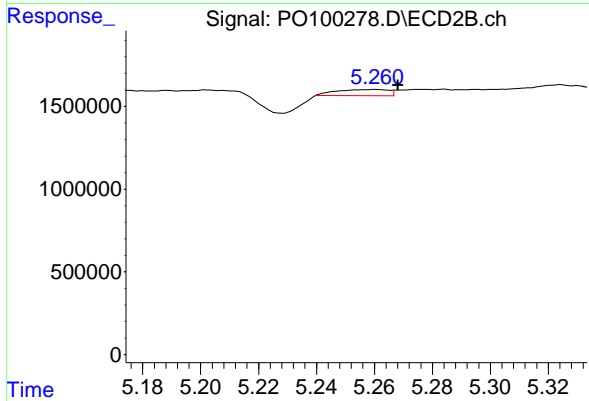
#23 AR-1248-3

R.T.: 5.100 min
 Delta R.T.: 0.006 min
 Response: 1453322
 Conc: 50.33 ng/ml



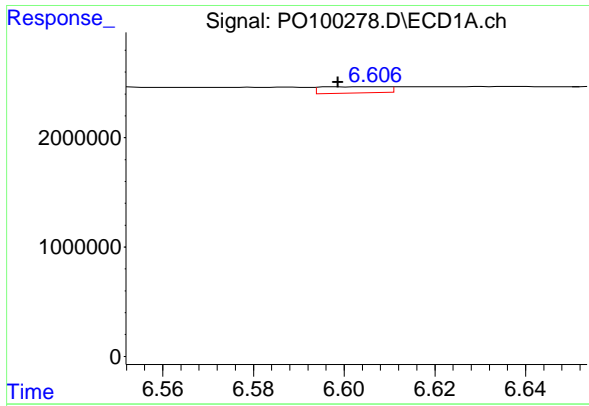
#24 AR-1248-4

R.T.: 6.562 min
 Delta R.T.: 0.003 min
 Response: 432375
 Conc: 11.47 ng/ml



#24 AR-1248-4

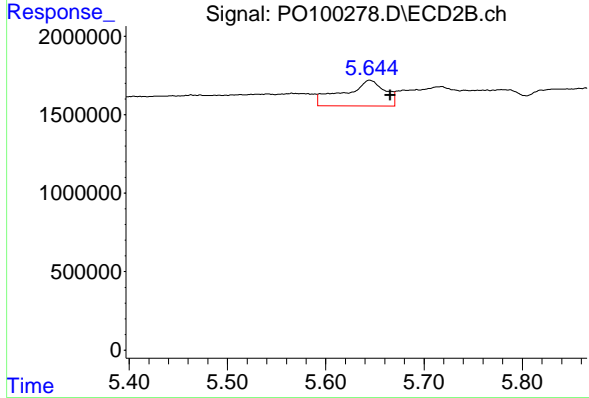
R.T.: 5.260 min
 Delta R.T.: -0.008 min
 Response: 471559
 Conc: 14.38 ng/ml



#25 AR-1248-5

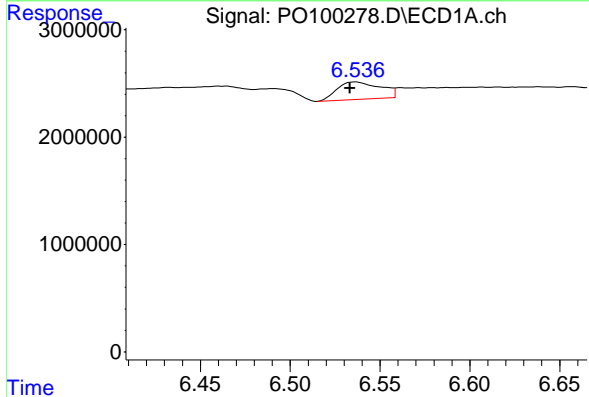
R.T.: 6.607 min
 Delta R.T.: 0.008 min
 Response: 584578
 Conc: 15.83 ng/ml

Instrument :
 ECD_O
 ClientSampleId :



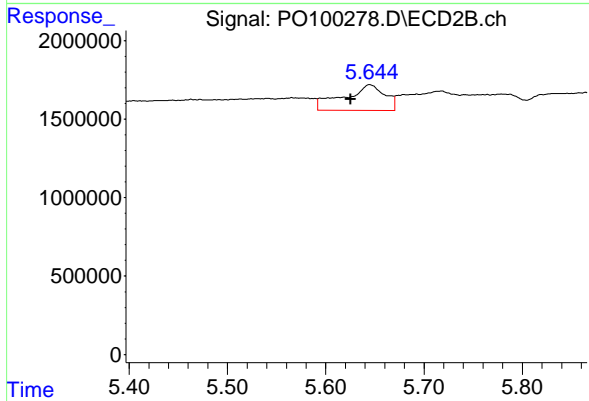
#25 AR-1248-5

R.T.: 5.645 min
 Delta R.T.: -0.021 min
 Response: 4832893
 Conc: 161.79 ng/ml



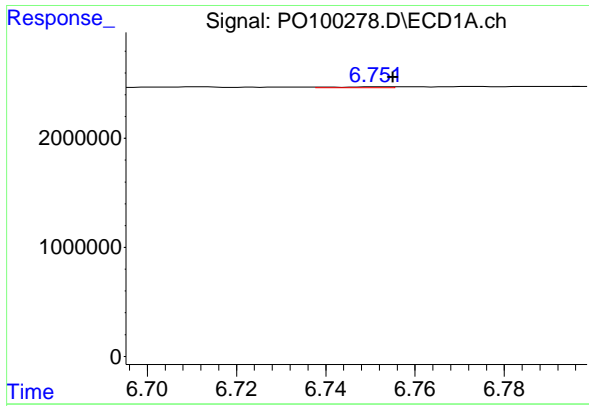
#26 AR-1254-1

R.T.: 6.537 min
 Delta R.T.: 0.003 min
 Response: 2709007
 Conc: 56.26 ng/ml



#26 AR-1254-1

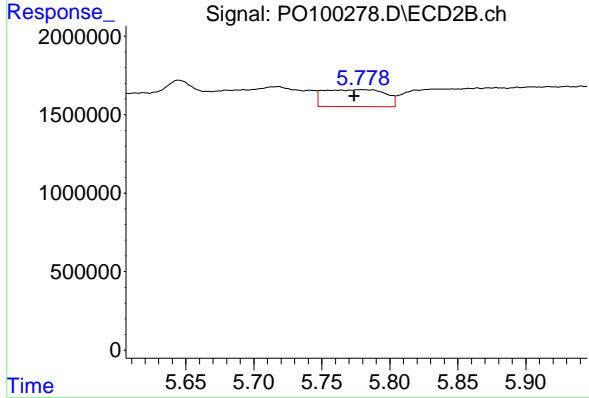
R.T.: 5.645 min
 Delta R.T.: 0.019 min
 Response: 4832893
 Conc: 93.23 ng/ml



#27 AR-1254-2

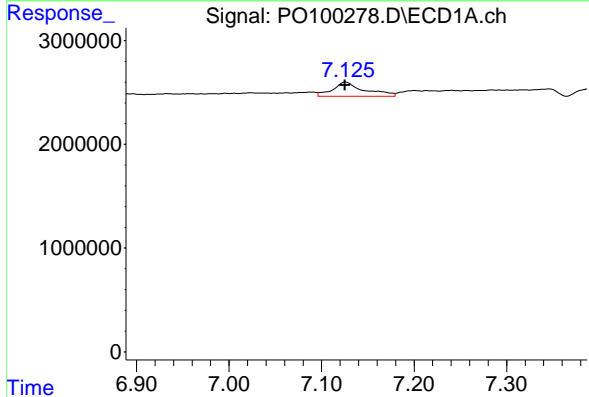
R.T.: 6.752 min
 Delta R.T.: -0.003 min
 Response: 70141
 Conc: 1.02 ng/ml

Instrument :
 ECD_O
 ClientSampleId :



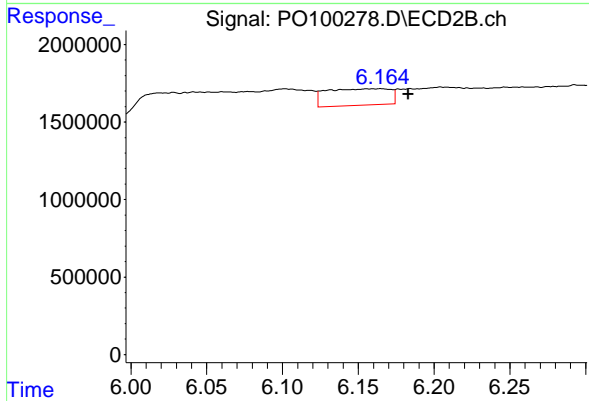
#27 AR-1254-2

R.T.: 5.780 min
 Delta R.T.: 0.006 min
 Response: 3401731
 Conc: 73.05 ng/ml



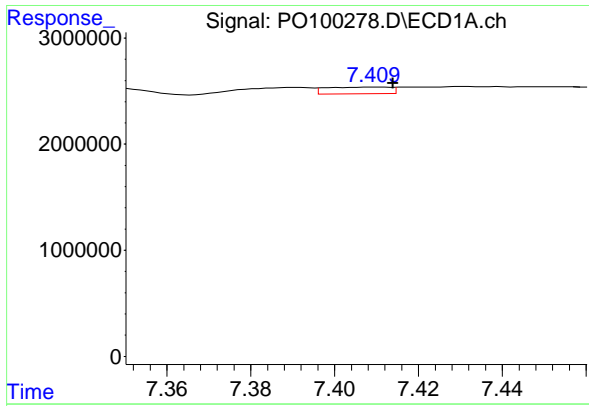
#28 AR-1254-3

R.T.: 7.126 min
 Delta R.T.: 0.000 min
 Response: 3211268
 Conc: 50.41 ng/ml



#28 AR-1254-3

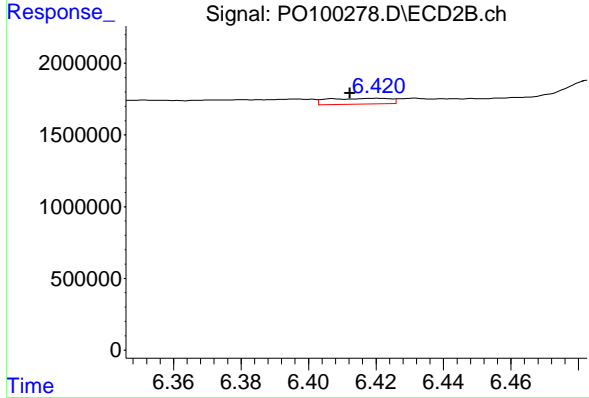
R.T.: 6.165 min
 Delta R.T.: -0.018 min
 Response: 3106755
 Conc: 39.83 ng/ml



#29 AR-1254-4

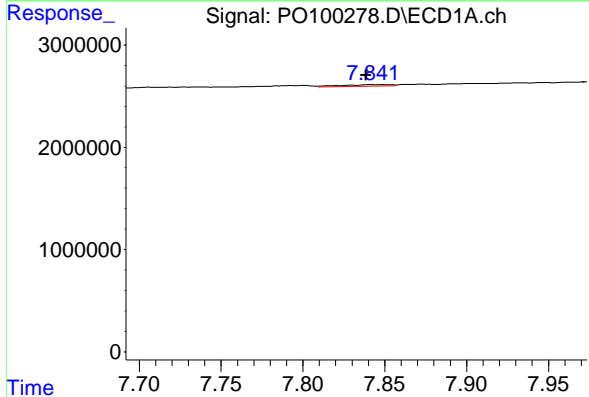
R.T.: 7.410 min
 Delta R.T.: -0.004 min
 Response: 665713
 Conc: 17.61 ng/ml

Instrument :
 ECD_O
 ClientSampleId :



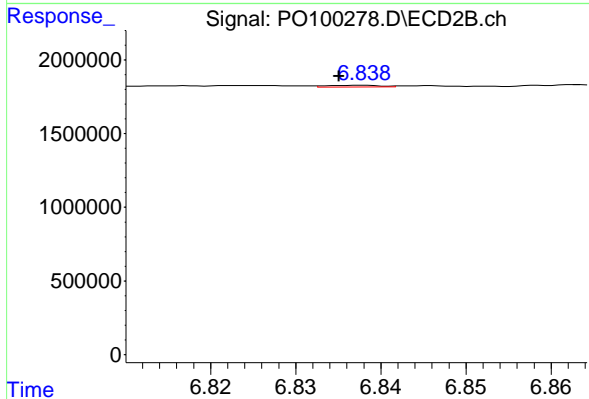
#29 AR-1254-4

R.T.: 6.420 min
 Delta R.T.: 0.008 min
 Response: 508432
 Conc: 11.91 ng/ml



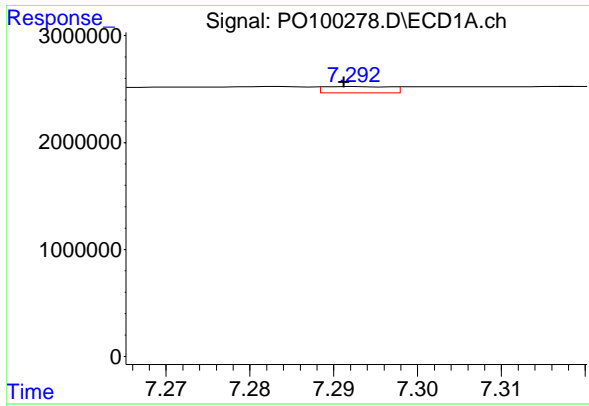
#30 AR-1254-5

R.T.: 7.841 min
 Delta R.T.: 0.003 min
 Response: 291788
 Conc: 6.82 ng/ml



#30 AR-1254-5

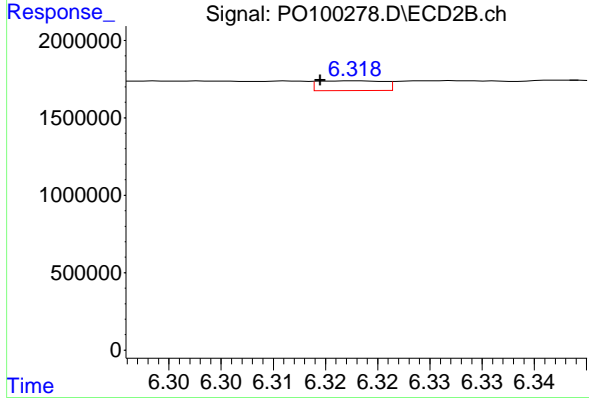
R.T.: 6.837 min
 Delta R.T.: 0.002 min
 Response: 48026
 Conc: 0.66 ng/ml



#31 AR-1260-1

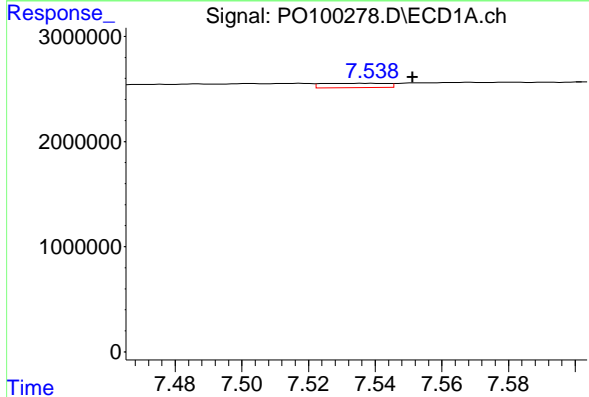
R.T.: 7.293 min
 Delta R.T.: 0.001 min
 Response: 330396
 Conc: 6.21 ng/ml

Instrument :
 ECD_O
 ClientSampleId :



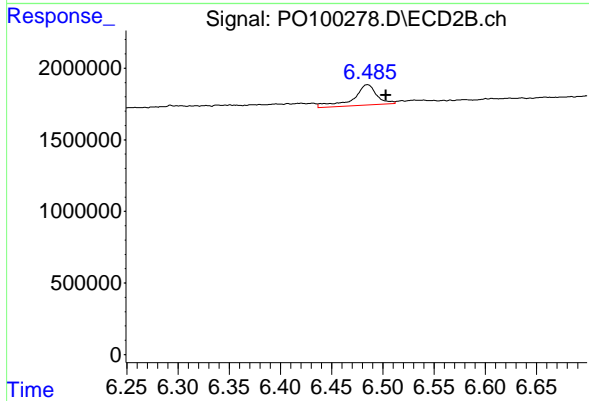
#31 AR-1260-1

R.T.: 6.318 min
 Delta R.T.: 0.003 min
 Response: 273193
 Conc: 4.73 ng/ml



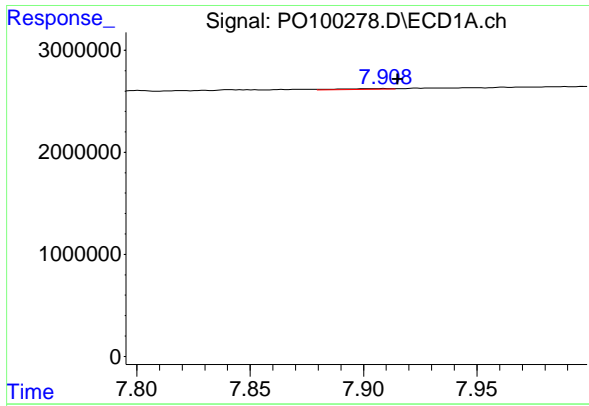
#32 AR-1260-2

R.T.: 7.538 min
 Delta R.T.: -0.013 min
 Response: 566841
 Conc: 10.72 ng/ml



#32 AR-1260-2

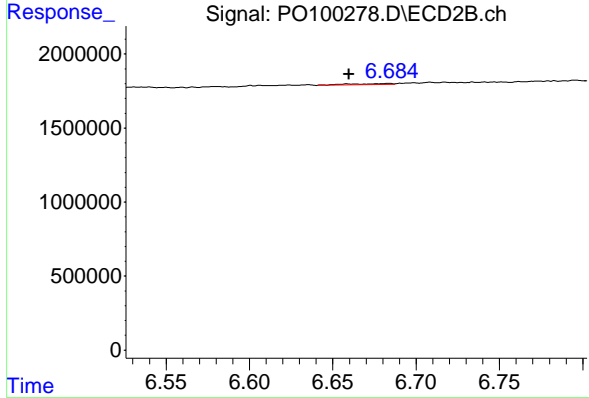
R.T.: 6.485 min
 Delta R.T.: -0.018 min
 Response: 2262076
 Conc: 34.06 ng/ml



#33 AR-1260-3

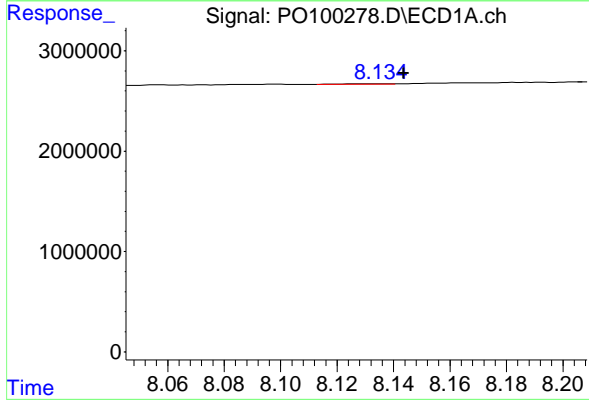
R.T.: 7.909 min
 Delta R.T.: -0.006 min
 Response: 121601
 Conc: 3.41 ng/ml

Instrument :
 ECD_O
 ClientSampleId :



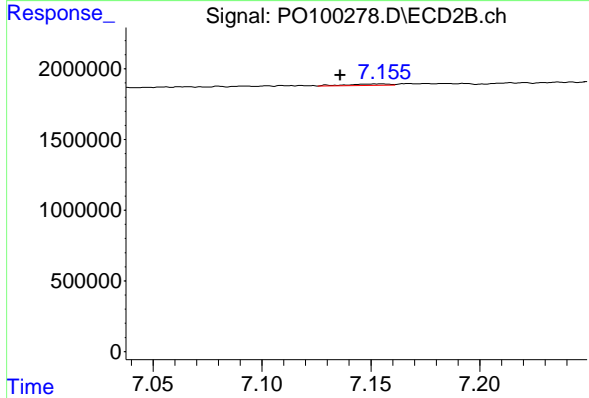
#33 AR-1260-3

R.T.: 6.684 min
 Delta R.T.: 0.024 min
 Response: 136181
 Conc: 2.13 ng/ml



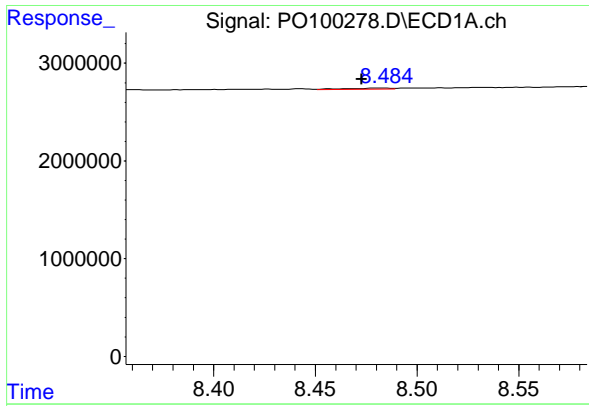
#34 AR-1260-4

R.T.: 8.134 min
 Delta R.T.: -0.009 min
 Response: 47832
 Conc: 1.16 ng/ml



#34 AR-1260-4

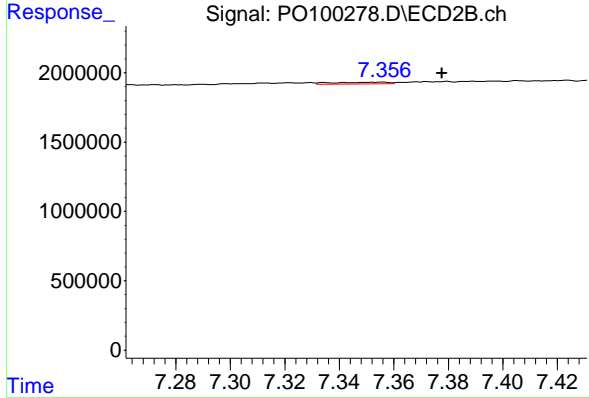
R.T.: 7.154 min
 Delta R.T.: 0.018 min
 Response: 151593
 Conc: 3.01 ng/ml



#35 AR-1260-5

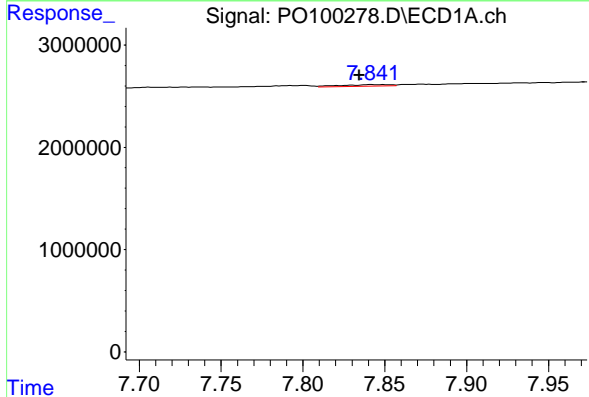
R.T.: 8.484 min
 Delta R.T.: 0.012 min
 Response: 180290
 Conc: 2.70 ng/ml

Instrument :
 ECD_O
 ClientSampleId :



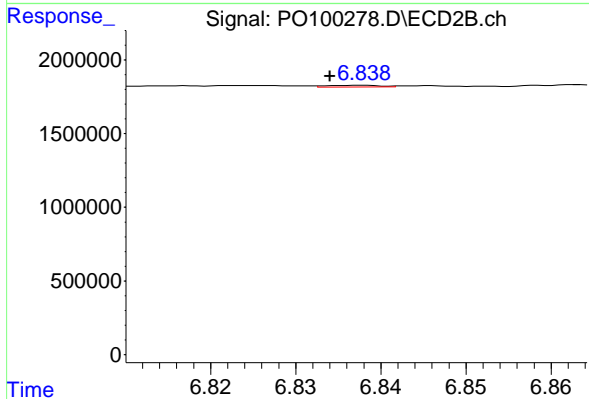
#35 AR-1260-5

R.T.: 7.356 min
 Delta R.T.: -0.023 min
 Response: 175304
 Conc: 1.56 ng/ml



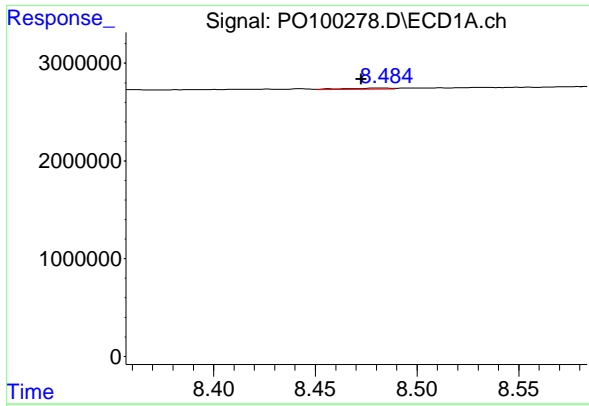
#36 AR-1262-1

R.T.: 7.841 min
 Delta R.T.: 0.007 min
 Response: 291788
 Conc: 8.07 ng/ml



#36 AR-1262-1

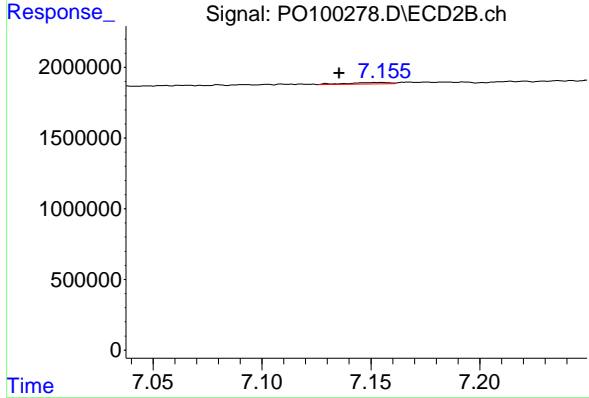
R.T.: 6.838 min
 Delta R.T.: 0.003 min
 Response: 48026
 Conc: 1.26 ng/ml



#37 AR-1262-2

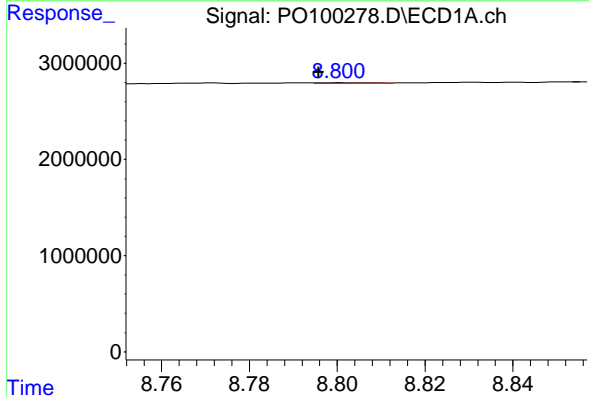
R.T.: 8.484 min
 Delta R.T.: 0.012 min
 Response: 180290
 Conc: 2.12 ng/ml

Instrument :
 ECD_O
 ClientSampleId :



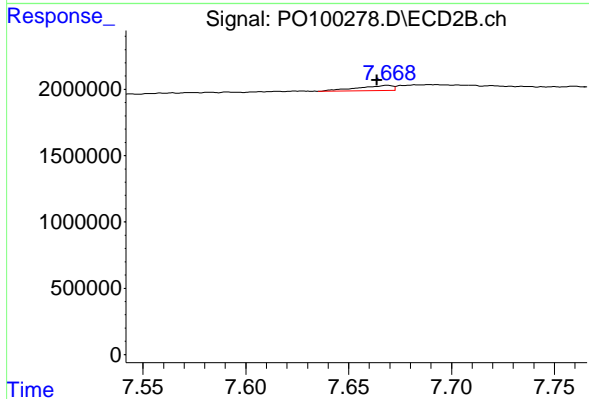
#37 AR-1262-2

R.T.: 7.154 min
 Delta R.T.: 0.019 min
 Response: 151593
 Conc: 2.01 ng/ml



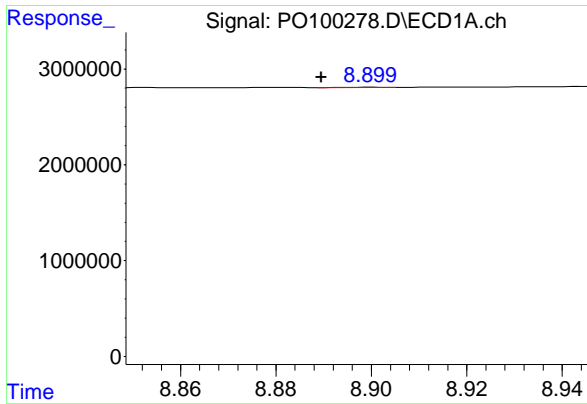
#38 AR-1262-3

R.T.: 8.800 min
 Delta R.T.: 0.004 min
 Response: 39910
 Conc: 0.66 ng/ml



#38 AR-1262-3

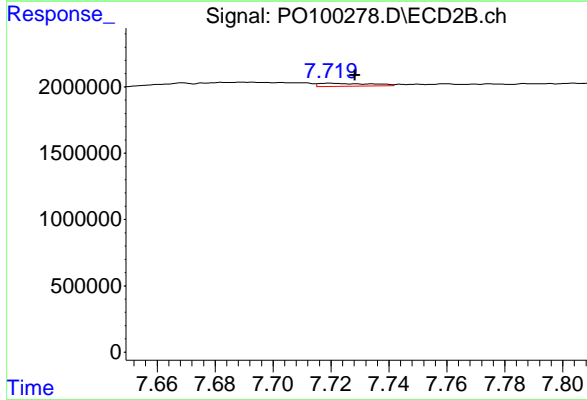
R.T.: 7.669 min
 Delta R.T.: 0.005 min
 Response: 440617
 Conc: 7.56 ng/ml



#39 AR-1262-4

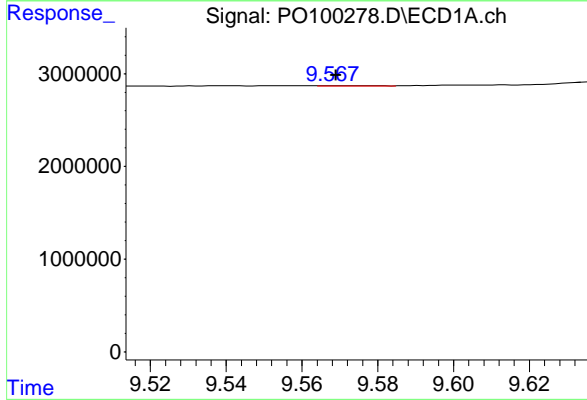
R.T.: 8.900 min
 Delta R.T.: 0.011 min
 Response: 22855
 Conc: 0.47 ng/ml

Instrument :
 ECD_O
 ClientSampleId :



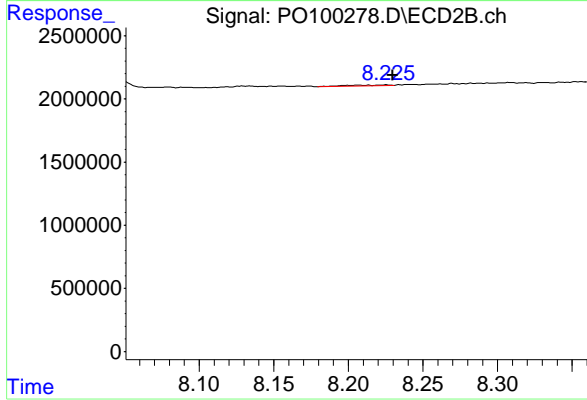
#39 AR-1262-4

R.T.: 7.719 min
 Delta R.T.: -0.009 min
 Response: 275211
 Conc: 2.68 ng/ml



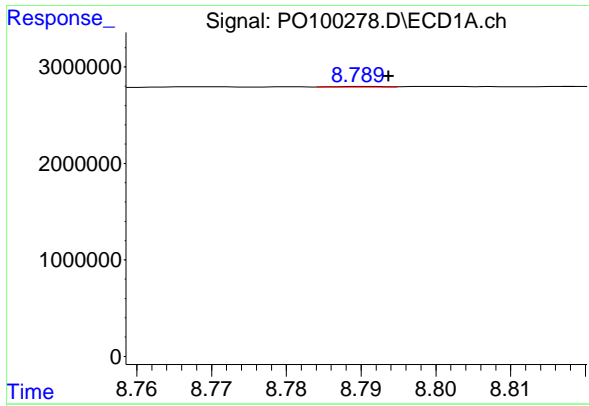
#40 AR-1262-5

R.T.: 9.569 min
 Delta R.T.: 0.000 min
 Response: 27563
 Conc: 1.06 ng/ml



#40 AR-1262-5

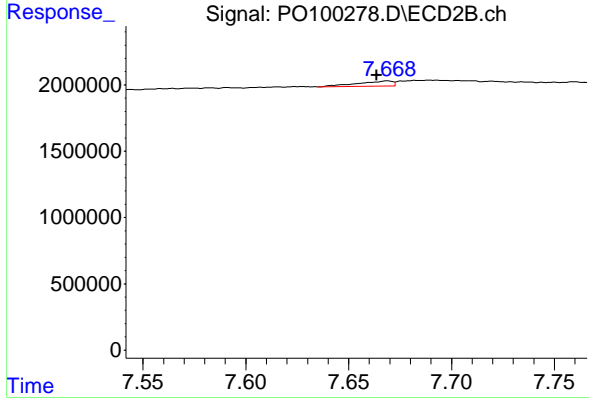
R.T.: 8.226 min
 Delta R.T.: -0.004 min
 Response: 133205
 Conc: 3.06 ng/ml



#41 AR-1268-1

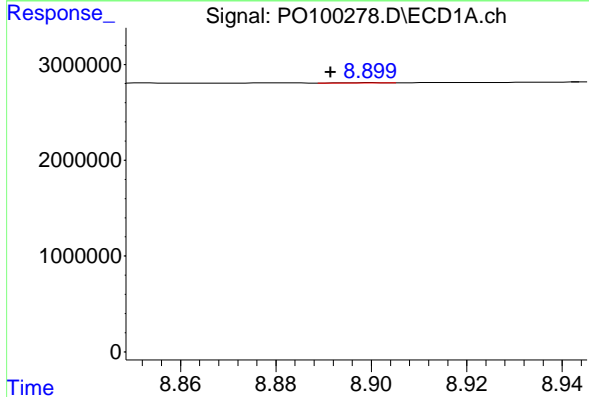
R.T.: 8.791 min
 Delta R.T.: -0.003 min
 Response: 27806
 Conc: 0.25 ng/ml

Instrument :
 ECD_O
 ClientSampleId :



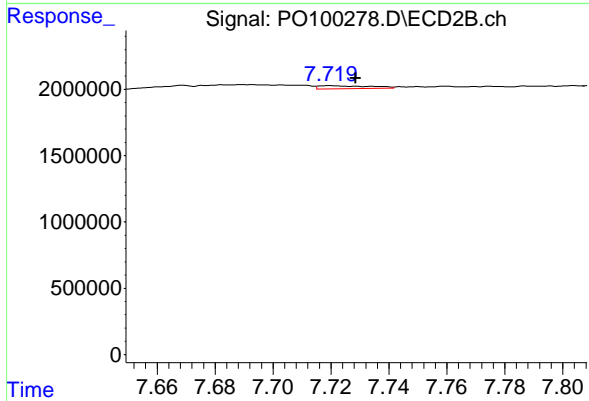
#41 AR-1268-1

R.T.: 7.669 min
 Delta R.T.: 0.005 min
 Response: 440617
 Conc: 2.65 ng/ml



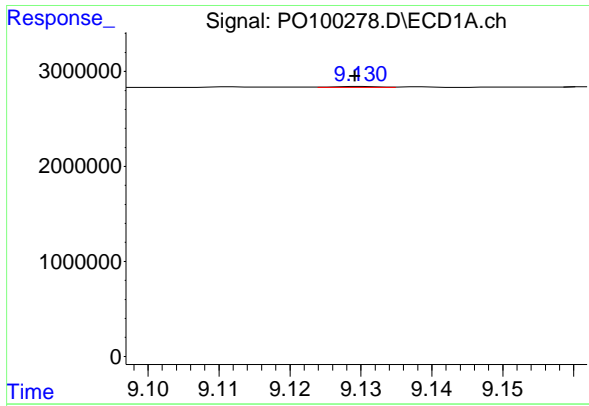
#42 AR-1268-2

R.T.: 8.900 min
 Delta R.T.: 0.009 min
 Response: 22855
 Conc: 0.24 ng/ml



#42 AR-1268-2

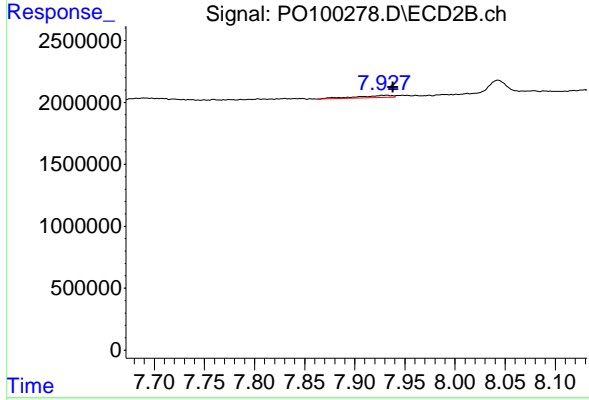
R.T.: 7.719 min
 Delta R.T.: -0.009 min
 Response: 275211
 Conc: 1.80 ng/ml



#43 AR-1268-3

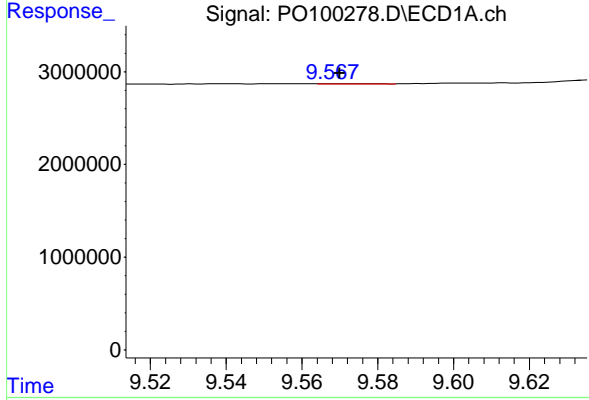
R.T.: 9.130 min
 Delta R.T.: 0.001 min
 Response: 40809
 Conc: 0.45 ng/ml

Instrument :
 ECD_O
 ClientSampleId :



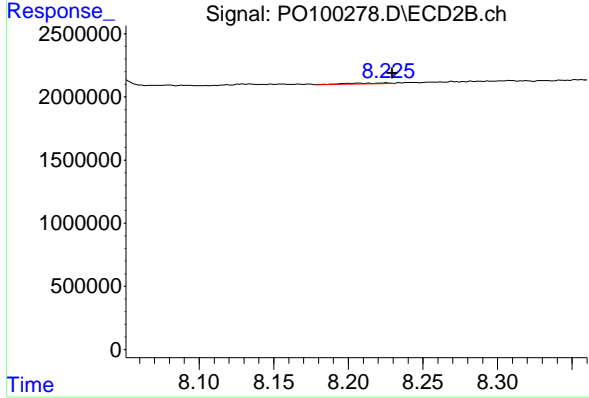
#43 AR-1268-3

R.T.: 7.932 min
 Delta R.T.: -0.006 min
 Response: 423899
 Conc: 2.96 ng/ml



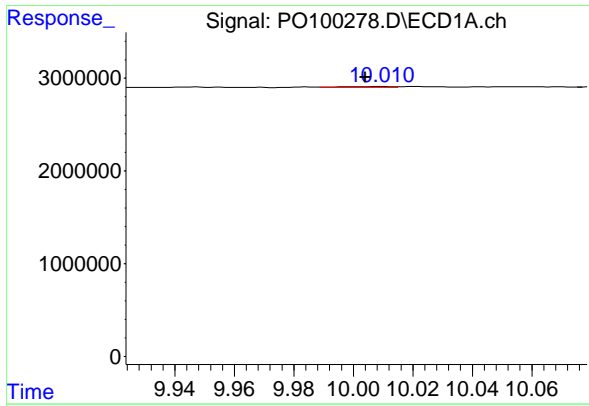
#44 AR-1268-4

R.T.: 9.569 min
 Delta R.T.: -0.001 min
 Response: 27563
 Conc: 0.97 ng/ml



#44 AR-1268-4

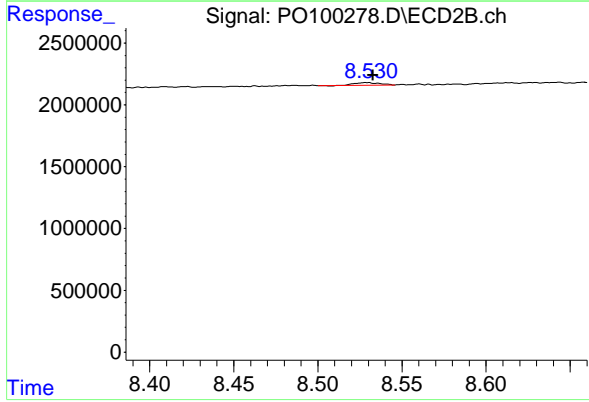
R.T.: 8.226 min
 Delta R.T.: -0.004 min
 Response: 133205
 Conc: 2.84 ng/ml



#45 AR-1268-5

R.T.: 10.010 min
 Delta R.T.: 0.006 min
 Response: 120706
 Conc: 0.48 ng/ml

Instrument :
 ECD_O
 ClientSampleId :



#45 AR-1268-5

R.T.: 8.529 min
 Delta R.T.: -0.004 min
 Response: 230895
 Conc: 0.58 ng/ml