

Data Path : Z:\pestpcbsrv\HPCHEM1\ECD\_0\Data\PO120518\  
 Data File : P0052270.D  
 Signal(s) : Signal #1: ECD1A.CH Signal #2: ECD2B.CH  
 Acq On : 05 Dec 2018 20:18  
 Operator : SM/SJ  
 Sample : I.BLK  
 Misc :  
 ALS Vial : 2 Sample Multiplier: 1

Instrument :  
 ECD\_0  
 ClientSampleId :  
 I.BLK

Integration File signal 1: autoint1.e  
 Integration File signal 2: autoint2.e  
 Quant Time: Dec 06 03:27:51 2018  
 Quant Method : Z:\pestpcbsrv\HPCHEM1\ECD\_0\methods\PO120318.M  
 Quant Title : GC EXTRACTABLES  
 QLast Update : Tue Dec 04 03:10:39 2018  
 Response via : Initial Calibration  
 Integrator: ChemStation 6890 Scale Mode: Small noise peaks clipped

Volume Inj. : 2 µl  
 Signal #1 Phase : ZB-MR1 Signal #2 Phase: ZB-MR2  
 Signal #1 Info : 30Mx0.32mmx 0.50µ Signal #2 Info : 30M x 0.32mm x 0.25µm

Compound	RT#1	RT#2	Resp#1	Resp#2	ng/ml	ng/ml
----------	------	------	--------	--------	-------	-------

-----  
 System Monitoring Compounds

1) SA Tetrachlo...	4.277	3.294	21091384	5843665	24.499	26.201
2) SA Decachlor...	9.850	7.990	9698146	4136177	19.379	19.840

Target Compounds  
 -----

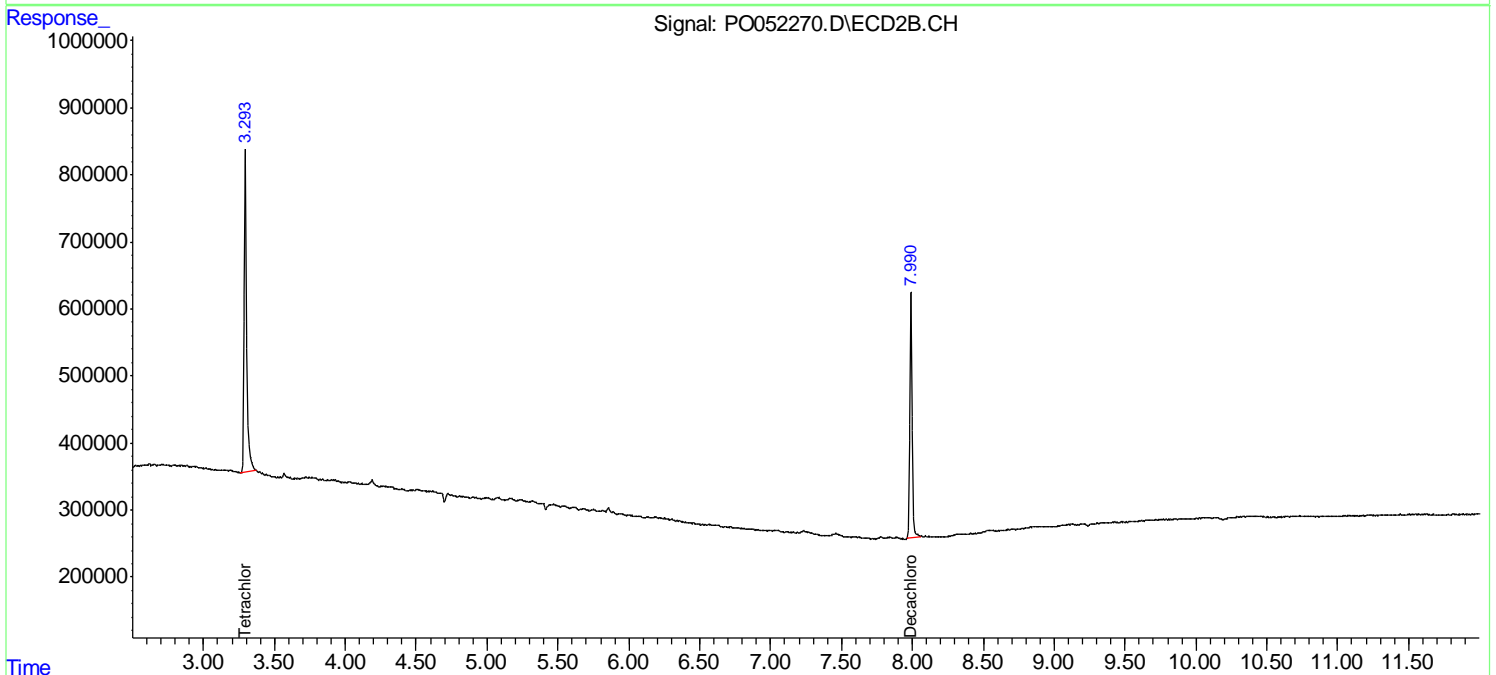
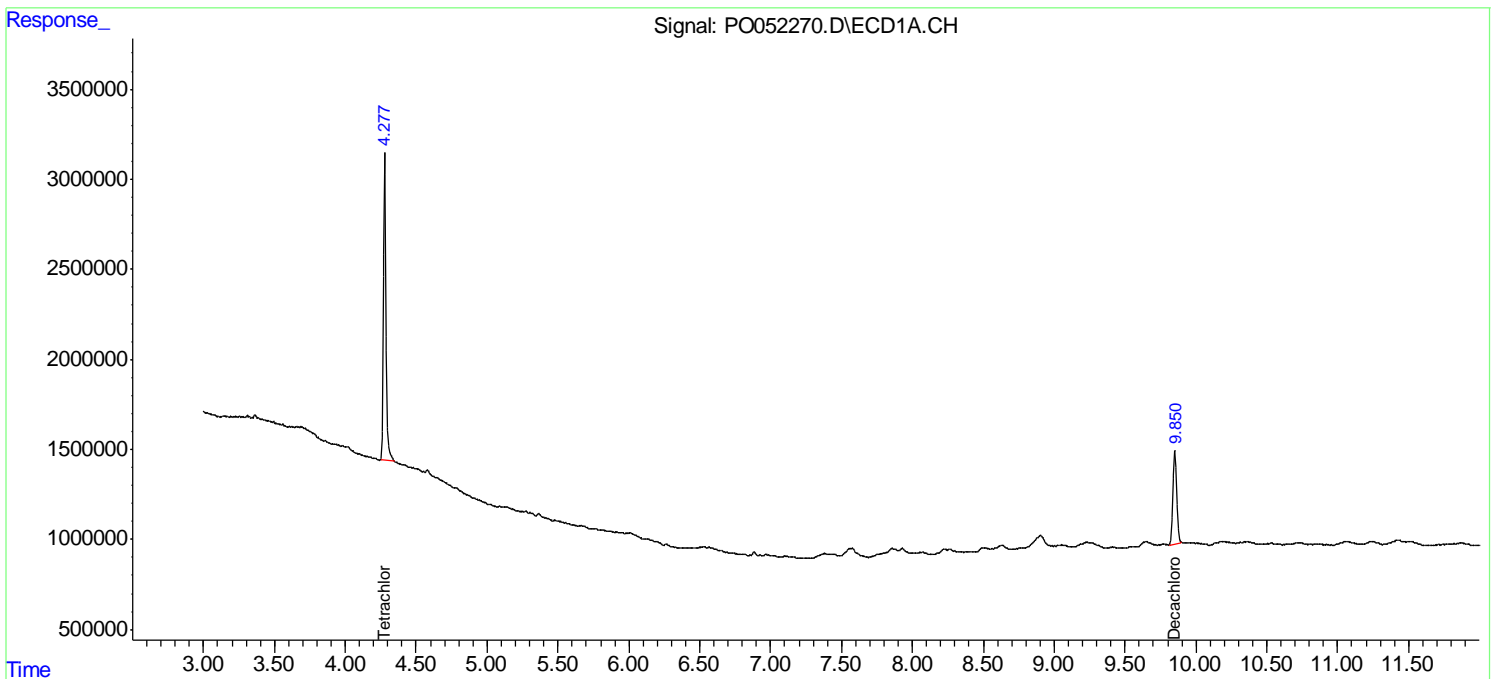
(f)=RT Delta > 1/2 Window (#)=Amounts differ by > 25% (m)=manual int.

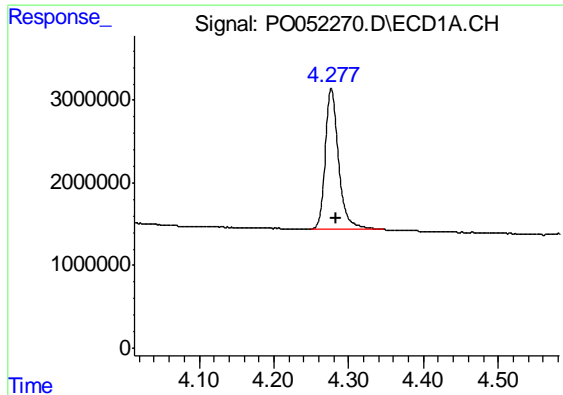
Data Path : Z:\pestpcbsrv\HPCHEM1\ECD\_O\Data\PO120518\  
 Data File : PO052270.D  
 Signal(s) : Signal #1: ECD1A.CH Signal #2: ECD2B.CH  
 Acq On : 05 Dec 2018 20:18  
 Operator : SM/SJ  
 Sample : I.BLK  
 Misc :  
 ALS Vial : 2 Sample Multiplier: 1

Instrument :  
 ECD\_O  
 ClientSampleId :  
 I.BLK

Integration File signal 1: autoint1.e  
 Integration File signal 2: autoint2.e  
 Quant Time: Dec 06 03:27:51 2018  
 Quant Method : Z:\pestpcbsrv\HPCHEM1\ECD\_O\methods\PO120318.M  
 Quant Title : GC EXTRACTABLES  
 QLast Update : Tue Dec 04 03:10:39 2018  
 Response via : Initial Calibration  
 Integrator: ChemStation 6890 Scale Mode: Small noise peaks clipped

Volume Inj. : 2 µl  
 Signal #1 Phase : ZB-MR1 Signal #2 Phase: ZB-MR2  
 Signal #1 Info : 30Mx0.32mmx 0.50µ Signal #2 Info : 30M x 0.32mm x 0.25µm

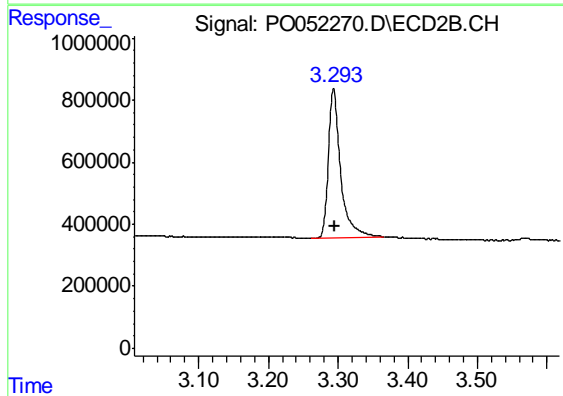




#1 Tetrachloro-m-xylene

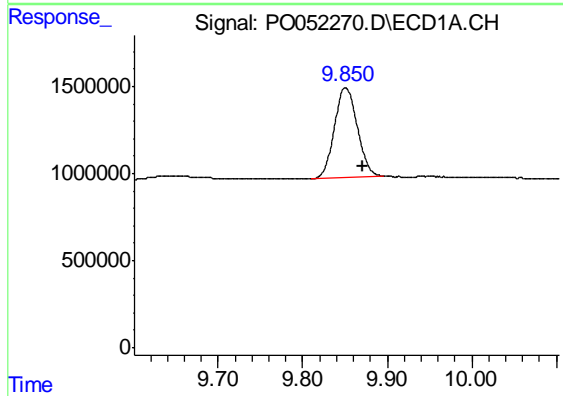
R.T.: 4.277 min  
Delta R.T.: -0.006 min  
Response: 21091384  
Conc: 24.50 ng/ml

Instrument :  
ECD\_O  
ClientSampled :  
I.BLK



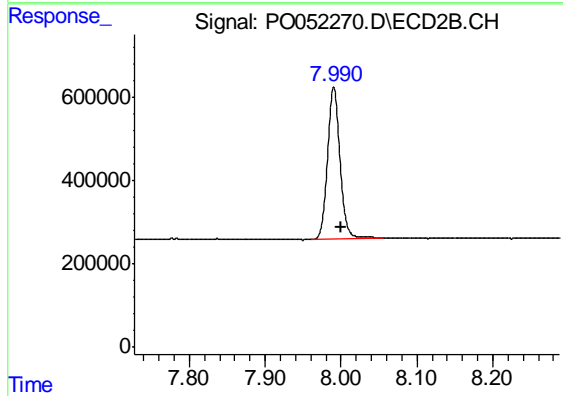
#1 Tetrachloro-m-xylene

R.T.: 3.294 min  
Delta R.T.: -0.002 min  
Response: 5843665  
Conc: 26.20 ng/ml



#2 Decachlorobiphenyl

R.T.: 9.850 min  
Delta R.T.: -0.022 min  
Response: 9698146  
Conc: 19.38 ng/ml



#2 Decachlorobiphenyl

R.T.: 7.990 min  
Delta R.T.: -0.010 min  
Response: 4136177  
Conc: 19.84 ng/ml