

Data Path : Z:\pestpcbsrv\HPCHEM1\ECD_0\Data\PO120519\
 Data File : PO064384.D
 Signal(s) : Signal #1: ECD1A.CH Signal #2: ECD2B.CH
 Acq On : 05 Dec 2019 21:28
 Operator : SM/AJ
 Sample : K6143-17
 Misc :
 ALS Vial : 34 Sample Multiplier: 1

Instrument :
 ECD_O
 ClientSampled :
 12D

Integration File signal 1: autoint1.e
 Integration File signal 2: autoint2.e
 Quant Time: Dec 06 00:56:31 2019
 Quant Method : Z:\pestpcbsrv\HPCHEM1\ECD_0\methods\PO112719.M
 Quant Title : GC EXTRACTABLES
 QLast Update : Thu Nov 28 01:28:08 2019
 Response via : Initial Calibration
 Integrator: ChemStation 6890 Scale Mode: Small noise peaks clipped

Volume Inj. : 2 µl
 Signal #1 Phase : ZB-MR1 Signal #2 Phase: ZB-MR2
 Signal #1 Info : 30Mx0.32mmx 0.50µ Signal #2 Info : 30M x 0.32mm x 0.25µm

Compound	RT#1	RT#2	Resp#1	Resp#2	ng/ml	ng/ml
System Monitoring Compounds						
1) SA Tetrachlo...	4.319	3.568	776944	680504	26.234	28.610
2) SA Decachlor...	9.946	8.526	552514	592280	13.481	14.499
Target Compounds						
3) L1 AR-1016-1	5.485	4.580	8499	27395	6.547	26.165 #
4) L1 AR-1016-2	5.504	0.000	12149	0	6.664	N.D. #
5) L1 AR-1016-3	5.558	4.877	4282	39840	3.731	51.726 #
6) L1 AR-1016-4	5.668	4.877	9955	39840	10.586	61.244 #
7) L1 AR-1016-5	5.955	5.046	37353	40495	38.385	48.641 #
8) L2 AR-1221-1	4.455	3.769	40617	14287	114.330	54.611 #
9) L2 AR-1221-2	4.624	3.866	40527	17253	146.579	86.329 #
10) L2 AR-1221-3	4.665	3.937	4724	14284	5.626	22.090 #
11) L3 AR-1232-1	4.665	3.937	4724	14284	3.685	14.105 #
12) L3 AR-1232-2	5.194	0.000	14521	0	20.670	N.D. #
13) L3 AR-1232-3	5.504	4.877	12149	39840	8.773	68.530 #
14) L3 AR-1232-4	5.668	4.923	9955	11941	13.992	22.492 #
15) L3 AR-1232-5	5.752	5.046	27311	40495	48.492	69.161 #
16) L4 AR-1242-1	5.485	4.580	8499	27395	8.926	35.776 #
17) L4 AR-1242-2	5.504	0.000	12149	0	8.995	N.D. #
18) L4 AR-1242-3	5.558	4.877	4282	39840	4.990	71.090 #
19) L4 AR-1242-4	5.668	4.923	9955	11941	14.238	21.053 #
20) L4 AR-1242-5	6.397	5.438	56069	283625	66.368	361.398 #
21) L5 AR-1248-1	5.485	4.580	8499	27395	15.152	61.007 #
22) L5 AR-1248-2	5.752	4.877	27311	39840	32.957	63.360 #
23) L5 AR-1248-3	5.955	4.923	37353	11941	40.607	18.506 #
24) L5 AR-1248-4	6.358	5.046	92437	40495	83.397	51.372 #
25) L5 AR-1248-5	6.397	5.438	56069	283625	52.255	234.098 #
26) L6 AR-1254-1	6.328	5.438	304939	283625	186.835	144.312
27) L6 AR-1254-2	6.545	5.583	725074	724663	278.142	404.636 #
28) L6 AR-1254-3	6.911	5.986	788339	1586938	273.135	512.772 #
29) L6 AR-1254-4	7.195	6.212	765838	719002	334.405	348.480
30) L6 AR-1254-5	7.611	6.627	3369269	3072255	1318.565	1018.586
31) L7 AR-1260-1	7.073	6.114	1439255	1635130	762.651	931.583
32) L7 AR-1260-2	7.329	6.300	2351986	2488121	1005.681	1118.369
33) L7 AR-1260-3	7.686	6.454	2406559	1663881	1299.929	818.347 #
34) L7 AR-1260-4	7.910	6.923	2519954	2094809	1149.831	1129.424
35) L7 AR-1260-5	8.222	7.163	3559319	4813710	806.194	994.278
36) L8 AR-1262-1	7.686	6.717	2406559	1024519	806.045	815.357
37) L8 AR-1262-2	8.222	7.163	3559319	4813710	645.537	806.951 #
38) L8 AR-1262-3	8.522	7.445	2831011	1862524	731.669	798.938
39) L8 AR-1262-4	8.608	7.509	1796744	3175218	614.633	713.037
40) L8 AR-1262-5	9.235	8.001	1290120	1402807	614.668	664.198
41) L9 AR-1268-1	8.522	7.445	2831011	1862524	434.211	266.766 #

Data Path : Z:\pestpcbsrv\HPCHEM1\ECD_0\Data\PO120519\
 Data File : PO064384.D
 Signal(s) : Signal #1: ECD1A.CH Signal #2: ECD2B.CH
 Acq On : 05 Dec 2019 21:28
 Operator : SM/AJ
 Sample : K6143-17
 Misc :
 ALS Vial : 34 Sample Multiplier: 1

Instrument :
 ECD_0
 ClientSampleId :
 12D

Integration File signal 1: autoint1.e
 Integration File signal 2: autoint2.e
 Quant Time: Dec 06 00:56:31 2019
 Quant Method : Z:\pestpcbsrv\HPCHEM1\ECD_0\methods\PO112719.M
 Quant Title : GC EXTRACTABLES
 QLast Update : Thu Nov 28 01:28:08 2019
 Response via : Initial Calibration
 Integrator: ChemStation 6890 Scale Mode: Small noise peaks clipped

Volume Inj. : 2 µl
 Signal #1 Phase : ZB-MR1 Signal #2 Phase: ZB-MR2
 Signal #1 Info : 30Mx0.32mmx 0.50µ Signal #2 Info : 30M x 0.32mm x 0.25µm

	Compound	RT#1	RT#2	Resp#1	Resp#2	ng/ml	ng/ml
42)	L9 AR-1268-2	8.608	7.509	1796744	3175218	297.399	495.932 #
43)	L9 AR-1268-3	8.825	7.715	100886	101225	20.319	19.327
44)	L9 AR-1268-4	9.235	8.001	1290120	1402807	551.409	600.467
45)	L9 AR-1268-5	9.627	8.281	422369	422714	27.494	25.593

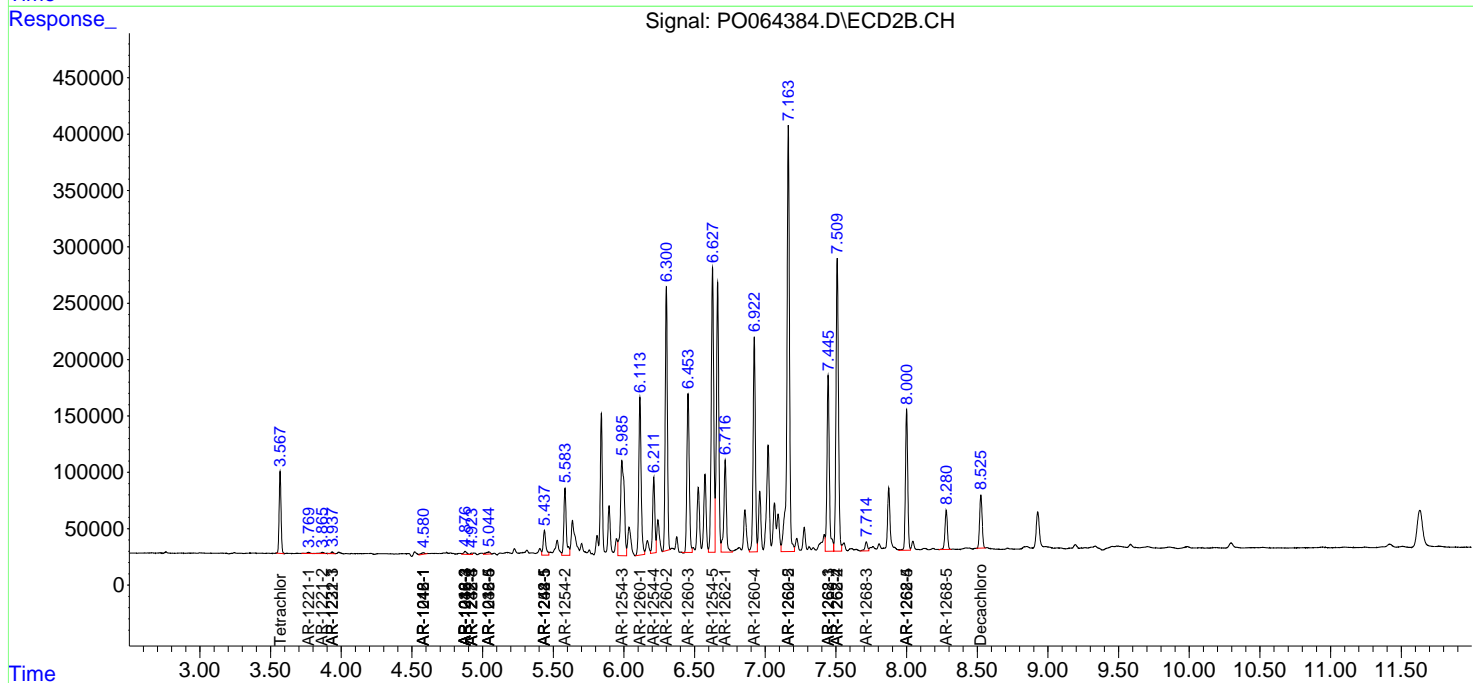
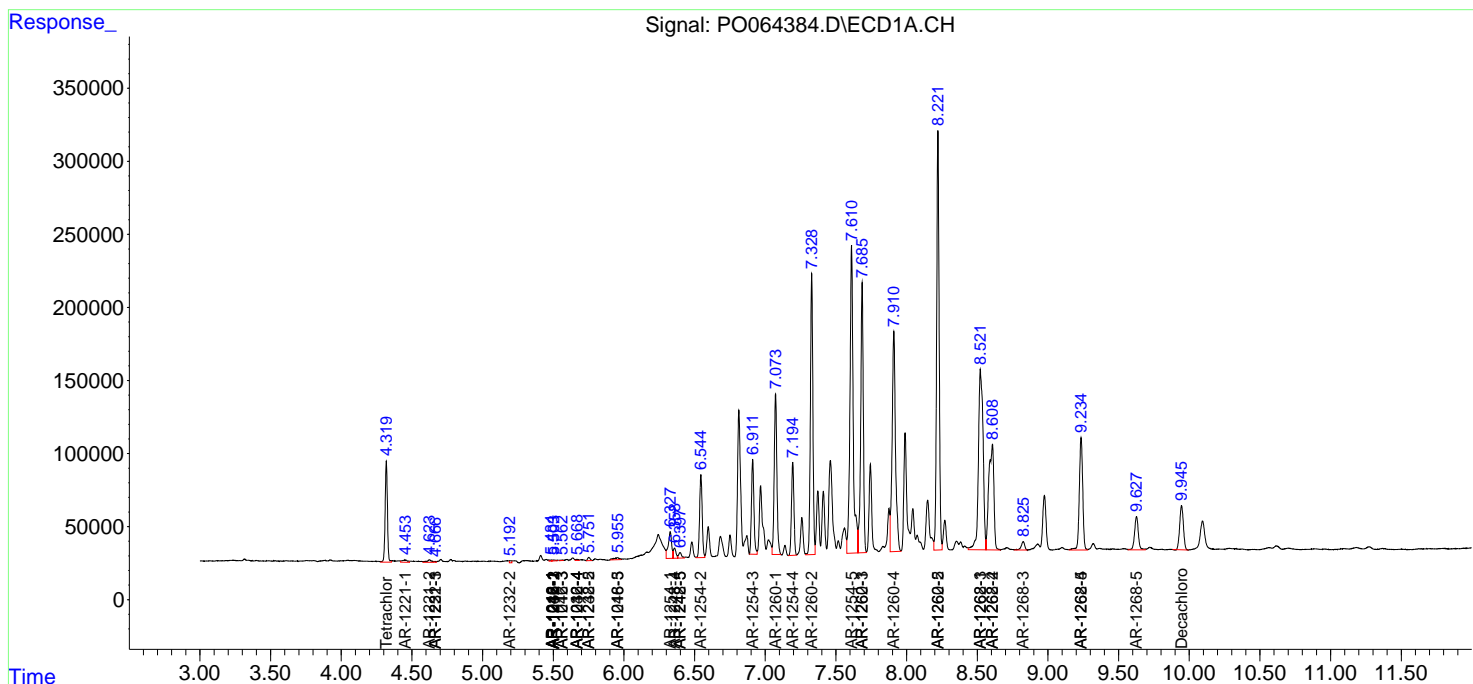
(f)=RT Delta > 1/2 Window (#)=Amounts differ by > 25% (m)=manual int.

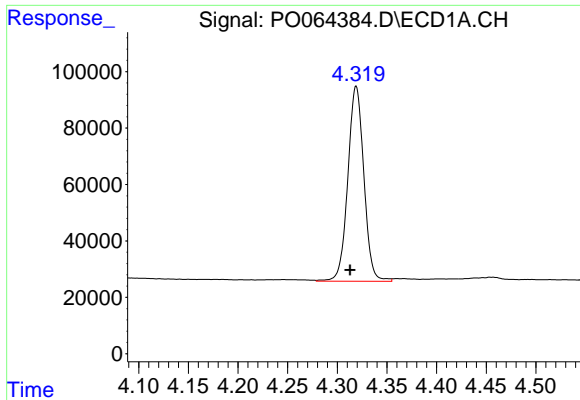
Data Path : Z:\pestpcbsrv\HPCHEM1\ECD_0\Data\PO120519\
 Data File : PO064384.D
 Signal(s) : Signal #1: ECD1A.CH Signal #2: ECD2B.CH
 Acq On : 05 Dec 2019 21:28
 Operator : SM/AJ
 Sample : K6143-17
 Misc :
 ALS Vial : 34 Sample Multiplier: 1

Instrument :
 ECD_O
 Client Sampled :
 12D

Integration File signal 1: autoint1.e
 Integration File signal 2: autoint2.e
 Quant Time: Dec 06 00:56:31 2019
 Quant Method : Z:\pestpcbsrv\HPCHEM1\ECD_0\methods\PO112719.M
 Quant Title : GC EXTRACTABLES
 QLast Update : Thu Nov 28 01:28:08 2019
 Response via : Initial Calibration
 Integrator: ChemStation 6890 Scale Mode: Small noise peaks clipped

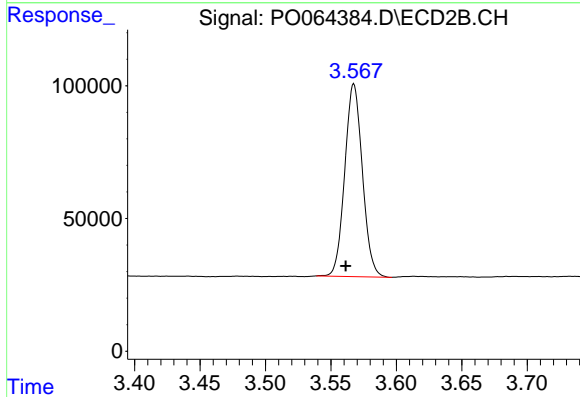
Volume Inj. : 2 µl
 Signal #1 Phase : ZB-MR1 Signal #2 Phase: ZB-MR2
 Signal #1 Info : 30Mx0.32mmx 0.50µ Signal #2 Info : 30M x 0.32mm x 0.25µm



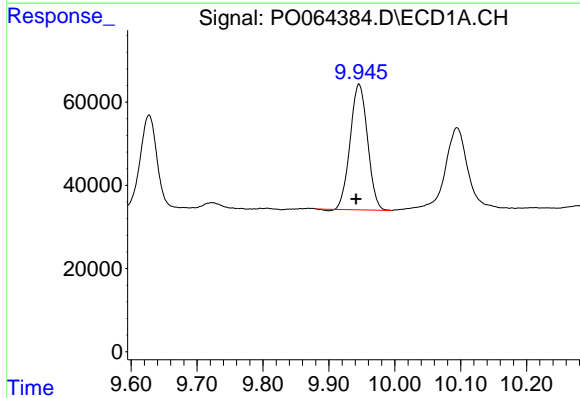


#1 Tetrachloro-m-xylene
 R.T.: 4.319 min
 Delta R.T.: 0.006 min
 Response: 776944
 Conc: 26.23 ng/ml

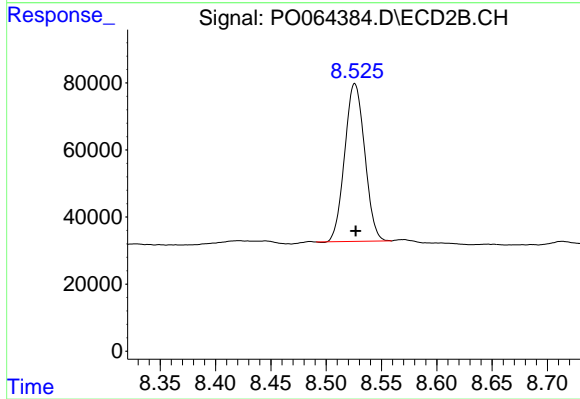
Instrument :
 ECD_O
 ClientSampled :
 12D



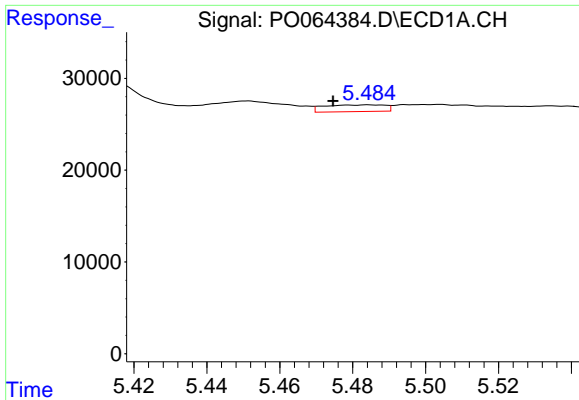
#1 Tetrachloro-m-xylene
 R.T.: 3.568 min
 Delta R.T.: 0.006 min
 Response: 680504
 Conc: 28.61 ng/ml



#2 Decachlorobiphenyl
 R.T.: 9.946 min
 Delta R.T.: 0.004 min
 Response: 552514
 Conc: 13.48 ng/ml

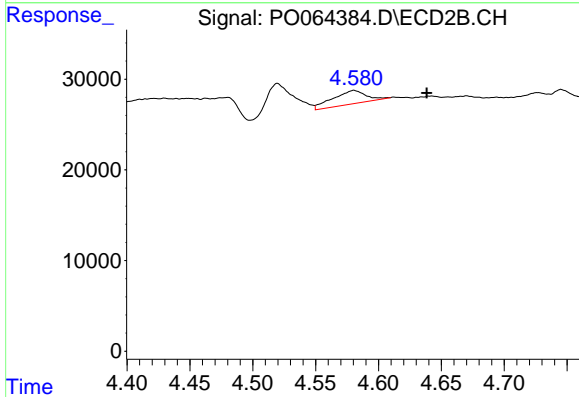


#2 Decachlorobiphenyl
 R.T.: 8.526 min
 Delta R.T.: 0.000 min
 Response: 592280
 Conc: 14.50 ng/ml

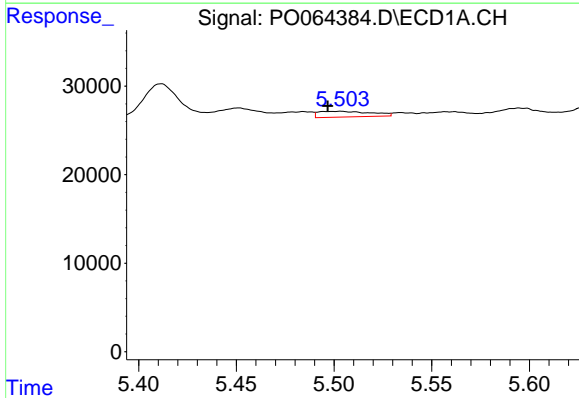


#3 AR-1016-1
 R.T.: 5.485 min
 Delta R.T.: 0.010 min
 Response: 8499
 Conc: 6.55 ng/ml

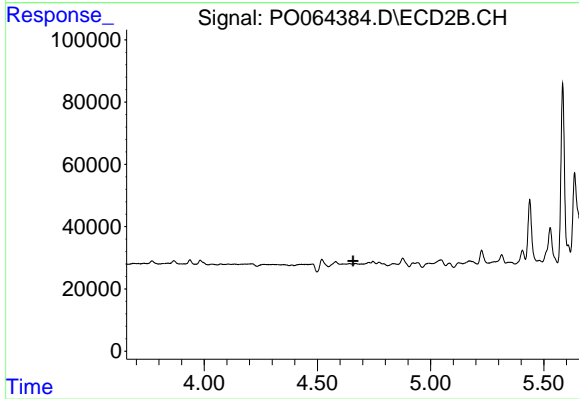
Instrument :
 ECD_O
 ClientSampled :
 12D



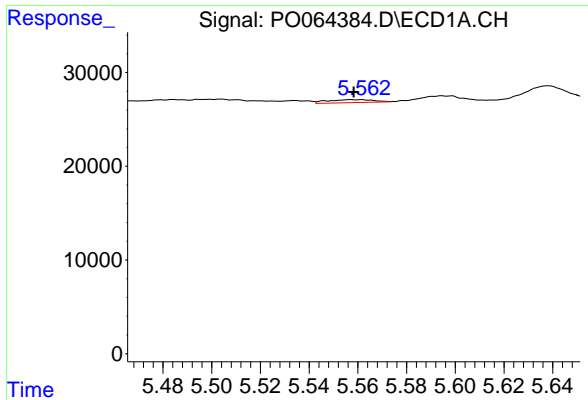
#3 AR-1016-1
 R.T.: 4.580 min
 Delta R.T.: -0.058 min
 Response: 27395
 Conc: 26.16 ng/ml



#4 AR-1016-2
 R.T.: 5.504 min
 Delta R.T.: 0.007 min
 Response: 12149
 Conc: 6.66 ng/ml

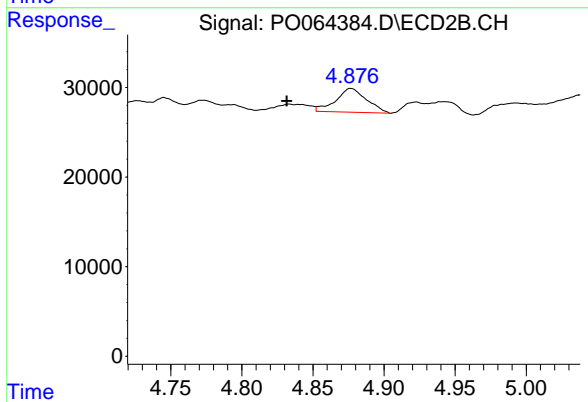


#4 AR-1016-2
 R.T.: 0.000 min
 Exp R.T. : 4.657 min
 Response: 0
 Conc: N.D.

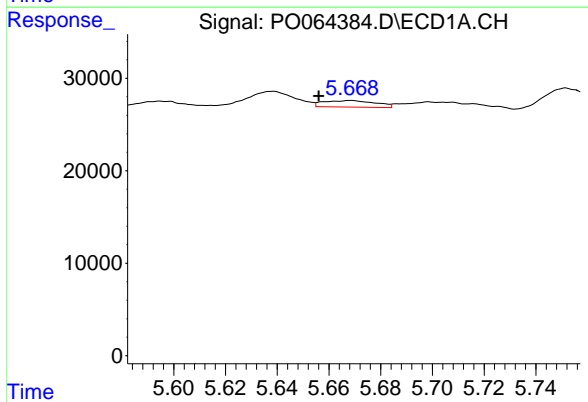


#5 AR-1016-3
 R.T.: 5.558 min
 Delta R.T.: 0.000 min
 Response: 4282
 Conc: 3.73 ng/ml

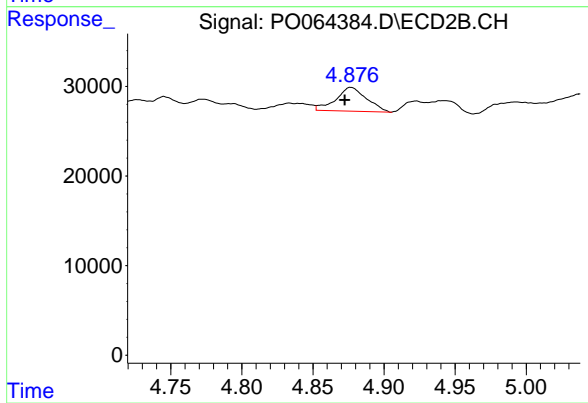
Instrument :
 ECD_O
 ClientSampled :
 12D



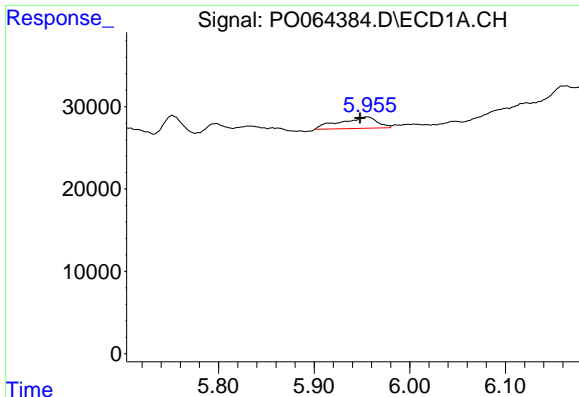
#5 AR-1016-3
 R.T.: 4.877 min
 Delta R.T.: 0.045 min
 Response: 39840
 Conc: 51.73 ng/ml



#6 AR-1016-4
 R.T.: 5.668 min
 Delta R.T.: 0.012 min
 Response: 9955
 Conc: 10.59 ng/ml



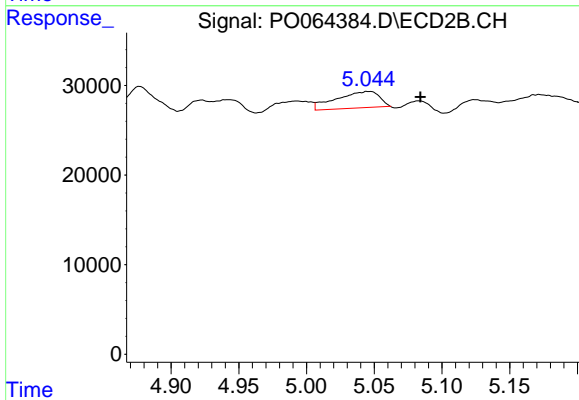
#6 AR-1016-4
 R.T.: 4.877 min
 Delta R.T.: 0.004 min
 Response: 39840
 Conc: 61.24 ng/ml



#7 AR-1016-5

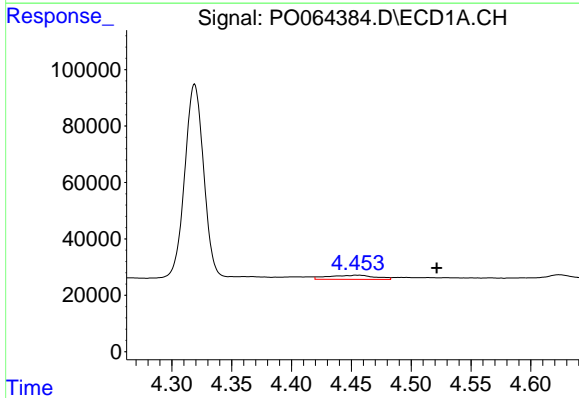
R.T.: 5.955 min
 Delta R.T.: 0.007 min
 Response: 37353
 Conc: 38.39 ng/ml

Instrument :
 ECD_O
 ClientSampled :
 12D



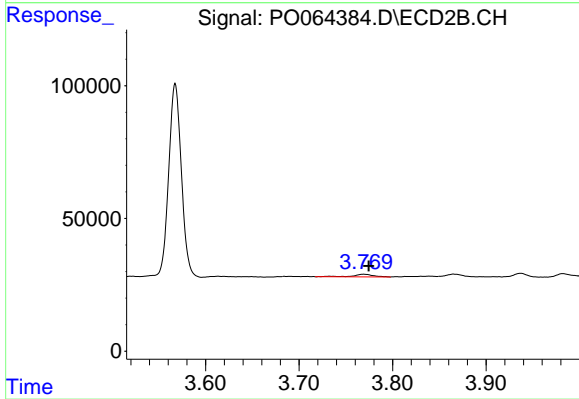
#7 AR-1016-5

R.T.: 5.046 min
 Delta R.T.: -0.038 min
 Response: 40495
 Conc: 48.64 ng/ml



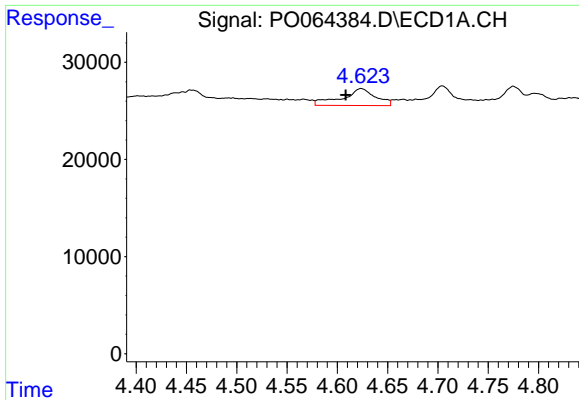
#8 AR-1221-1

R.T.: 4.455 min
 Delta R.T.: -0.067 min
 Response: 40617
 Conc: 114.33 ng/ml



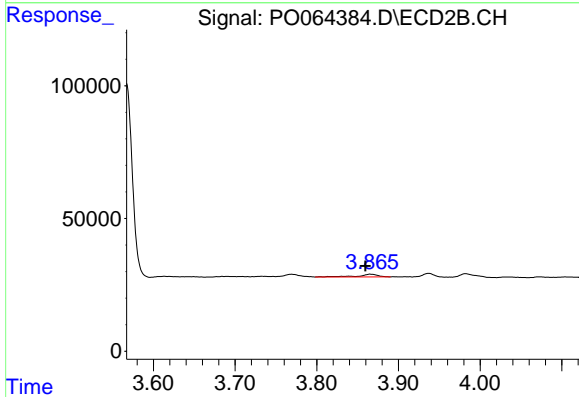
#8 AR-1221-1

R.T.: 3.769 min
 Delta R.T.: -0.006 min
 Response: 14287
 Conc: 54.61 ng/ml

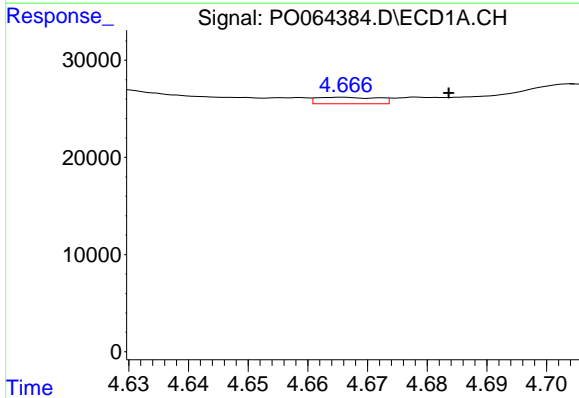


#9 AR-1221-2
 R.T.: 4.624 min
 Delta R.T.: 0.015 min
 Response: 40527
 Conc: 146.58 ng/ml

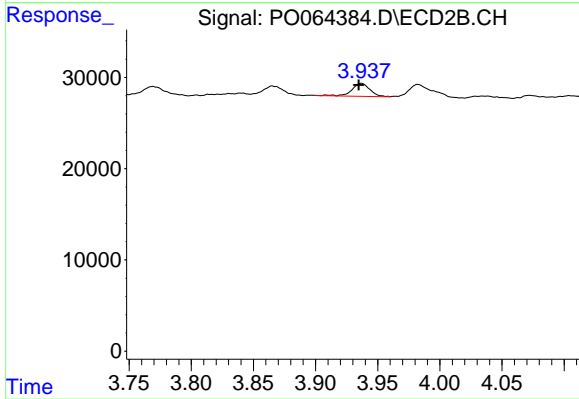
Instrument :
 ECD_O
 ClientSampleId :
 12D



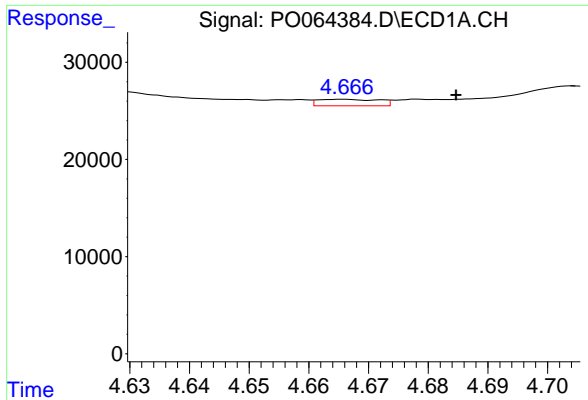
#9 AR-1221-2
 R.T.: 3.866 min
 Delta R.T.: 0.006 min
 Response: 17253
 Conc: 86.33 ng/ml



#10 AR-1221-3
 R.T.: 4.665 min
 Delta R.T.: -0.018 min
 Response: 4724
 Conc: 5.63 ng/ml

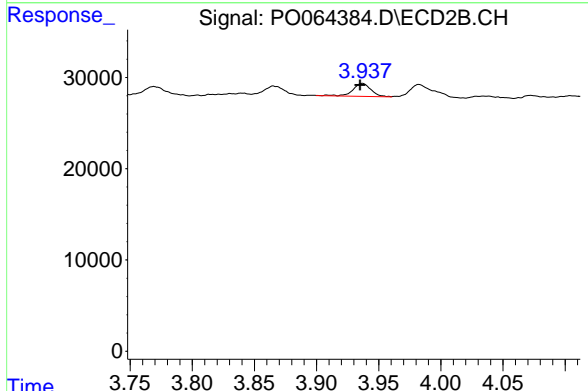


#10 AR-1221-3
 R.T.: 3.937 min
 Delta R.T.: 0.002 min
 Response: 14284
 Conc: 22.09 ng/ml

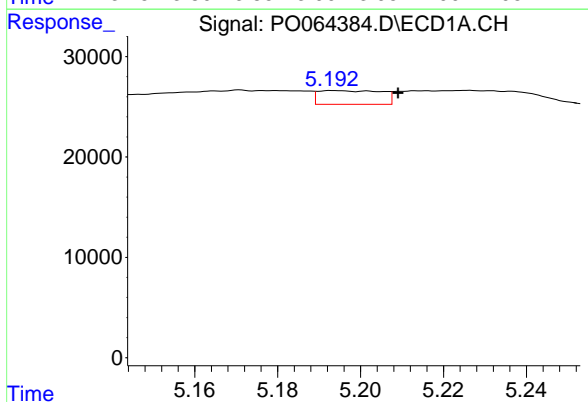


#11 AR-1232-1
 R.T.: 4.665 min
 Delta R.T.: -0.019 min
 Response: 4724
 Conc: 3.68 ng/ml

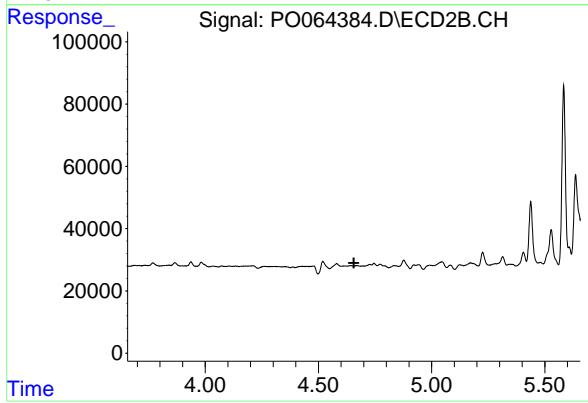
Instrument :
 ECD_O
 ClientSampleId :
 12D



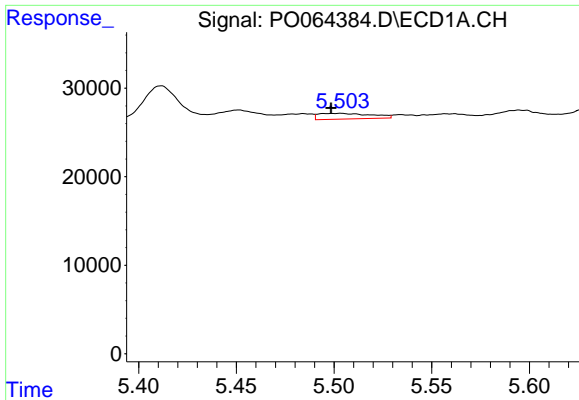
#11 AR-1232-1
 R.T.: 3.937 min
 Delta R.T.: 0.002 min
 Response: 14284
 Conc: 14.10 ng/ml



#12 AR-1232-2
 R.T.: 5.194 min
 Delta R.T.: -0.015 min
 Response: 14521
 Conc: 20.67 ng/ml



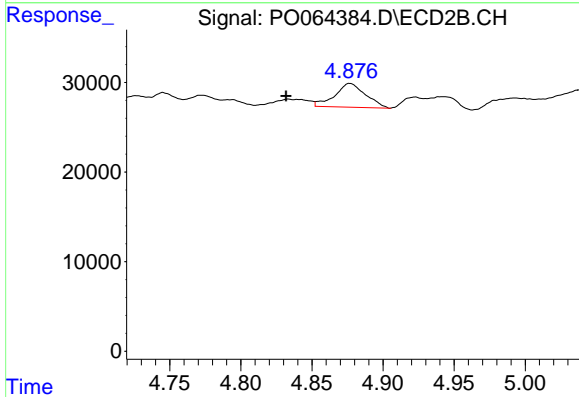
#12 AR-1232-2
 R.T.: 0.000 min
 Exp R.T. : 4.657 min
 Response: 0
 Conc: N.D.



#13 AR-1232-3

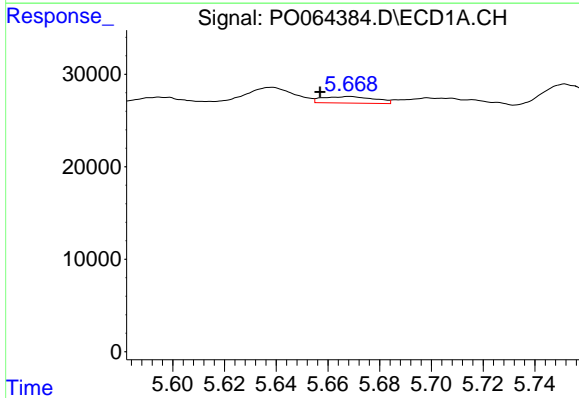
R.T.: 5.504 min
 Delta R.T.: 0.005 min
 Response: 12149
 Conc: 8.77 ng/ml

Instrument :
 ECD_O
 ClientSampled :
 12D



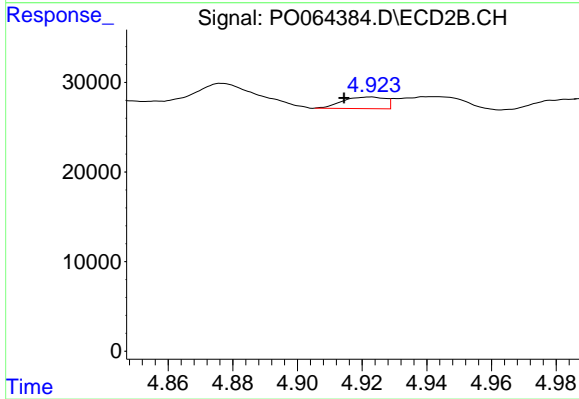
#13 AR-1232-3

R.T.: 4.877 min
 Delta R.T.: 0.045 min
 Response: 39840
 Conc: 68.53 ng/ml



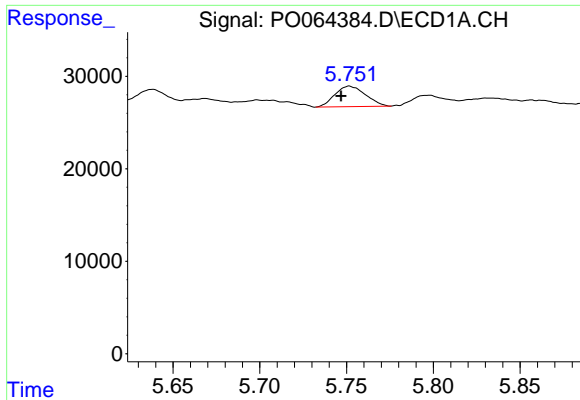
#14 AR-1232-4

R.T.: 5.668 min
 Delta R.T.: 0.012 min
 Response: 9955
 Conc: 13.99 ng/ml



#14 AR-1232-4

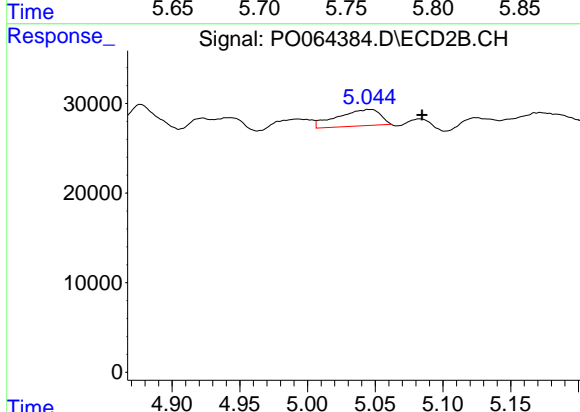
R.T.: 4.923 min
 Delta R.T.: 0.008 min
 Response: 11941
 Conc: 22.49 ng/ml



#15 AR-1232-5

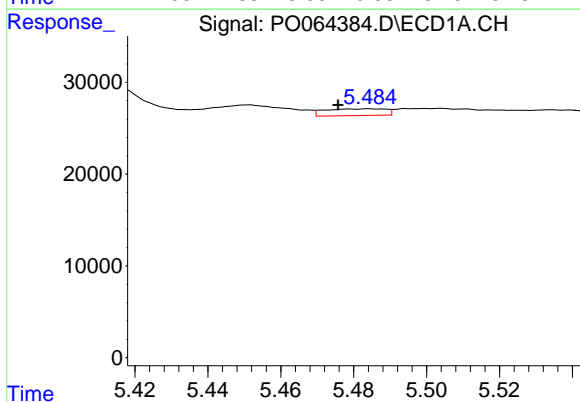
R.T.: 5.752 min
 Delta R.T.: 0.005 min
 Response: 27311
 Conc: 48.49 ng/ml

Instrument :
 ECD_O
 ClientSampleId :
 12D



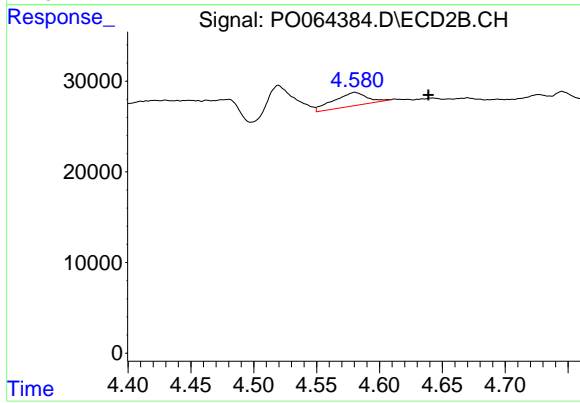
#15 AR-1232-5

R.T.: 5.046 min
 Delta R.T.: -0.039 min
 Response: 40495
 Conc: 69.16 ng/ml



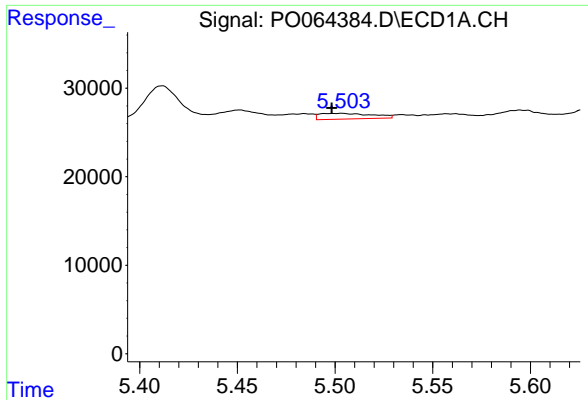
#16 AR-1242-1

R.T.: 5.485 min
 Delta R.T.: 0.009 min
 Response: 8499
 Conc: 8.93 ng/ml



#16 AR-1242-1

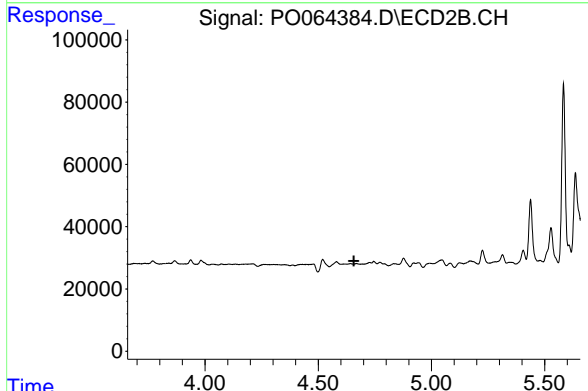
R.T.: 4.580 min
 Delta R.T.: -0.058 min
 Response: 27395
 Conc: 35.78 ng/ml



#17 AR-1242-2

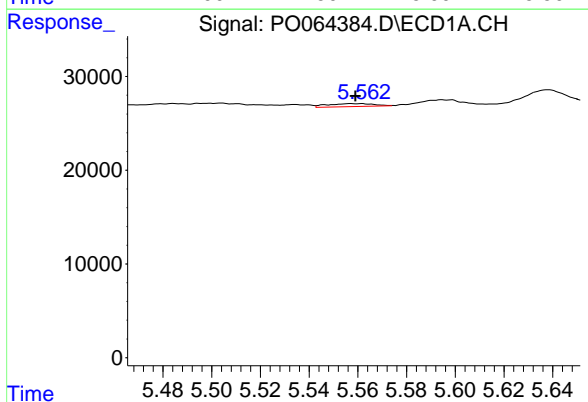
R.T.: 5.504 min
 Delta R.T.: 0.005 min
 Response: 12149
 Conc: 9.00 ng/ml

Instrument :
 ECD_O
 ClientSampled :
 12D



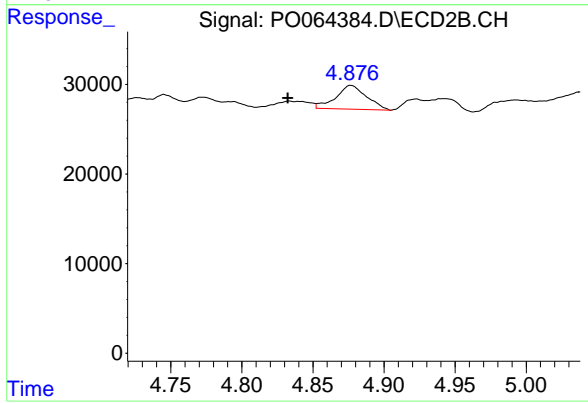
#17 AR-1242-2

R.T.: 0.000 min
 Exp R.T. : 4.658 min
 Response: 0
 Conc: N.D.



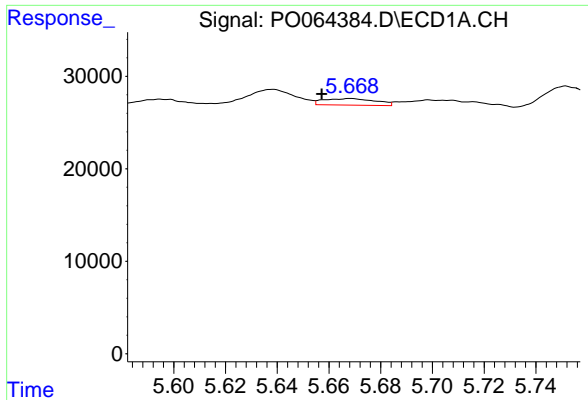
#18 AR-1242-3

R.T.: 5.558 min
 Delta R.T.: -0.001 min
 Response: 4282
 Conc: 4.99 ng/ml



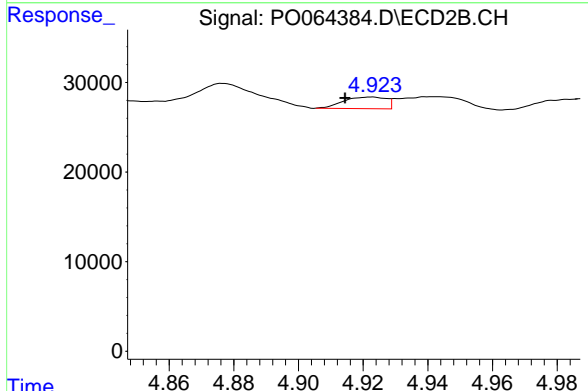
#18 AR-1242-3

R.T.: 4.877 min
 Delta R.T.: 0.044 min
 Response: 39840
 Conc: 71.09 ng/ml

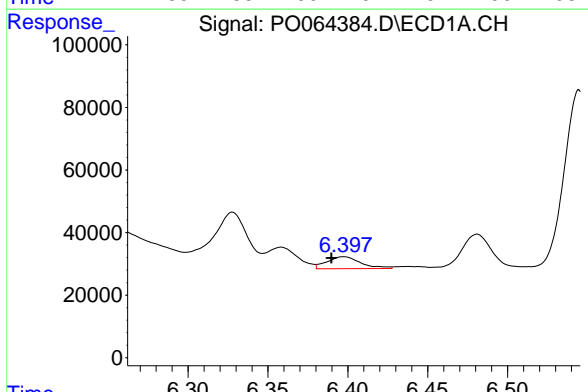


#19 AR-1242-4
 R.T.: 5.668 min
 Delta R.T.: 0.011 min
 Response: 9955
 Conc: 14.24 ng/ml

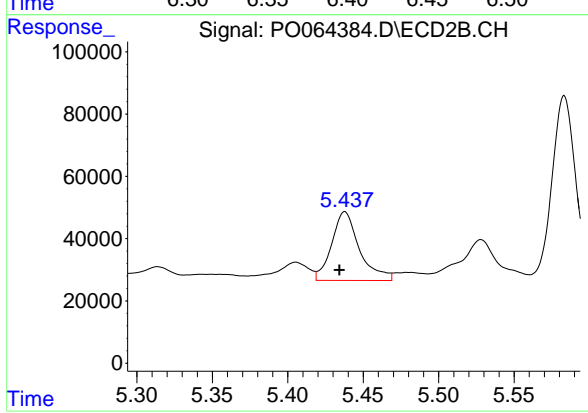
Instrument :
 ECD_O
 ClientSampleId :
 12D



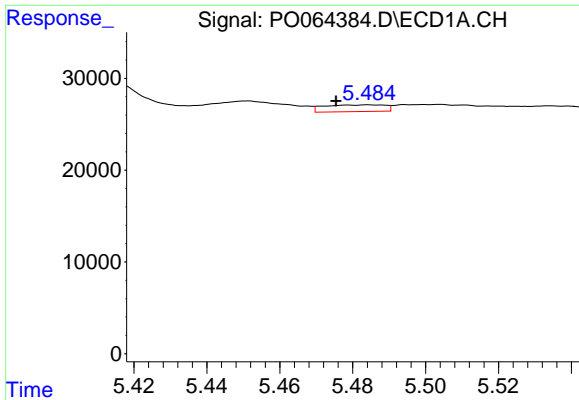
#19 AR-1242-4
 R.T.: 4.923 min
 Delta R.T.: 0.008 min
 Response: 11941
 Conc: 21.05 ng/ml



#20 AR-1242-5
 R.T.: 6.397 min
 Delta R.T.: 0.008 min
 Response: 56069
 Conc: 66.37 ng/ml



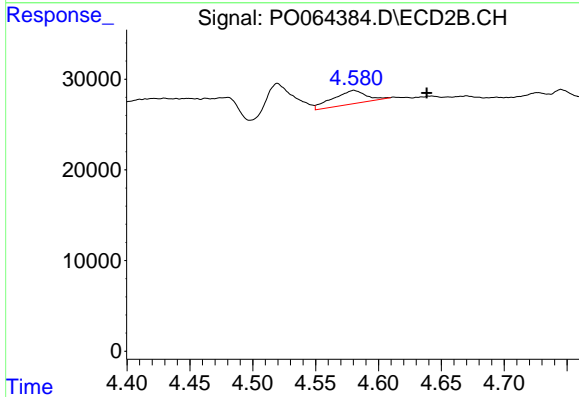
#20 AR-1242-5
 R.T.: 5.438 min
 Delta R.T.: 0.004 min
 Response: 283625
 Conc: 361.40 ng/ml



#21 AR-1248-1

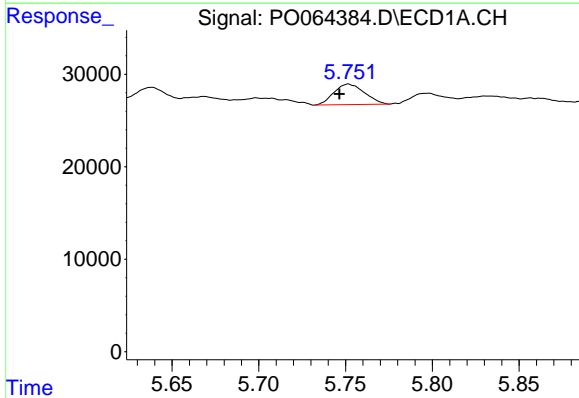
R.T.: 5.485 min
 Delta R.T.: 0.009 min
 Response: 8499
 Conc: 15.15 ng/ml

Instrument :
 ECD_O
 ClientSampleId :
 12D



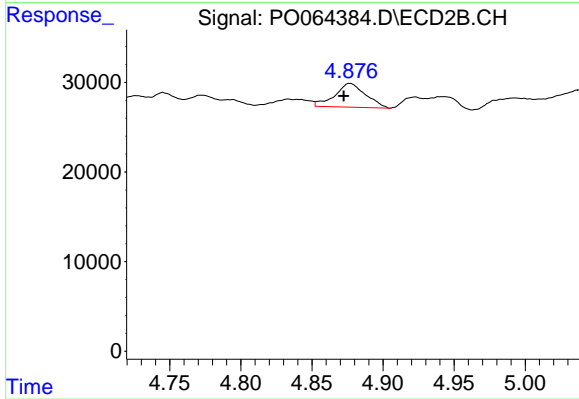
#21 AR-1248-1

R.T.: 4.580 min
 Delta R.T.: -0.058 min
 Response: 27395
 Conc: 61.01 ng/ml



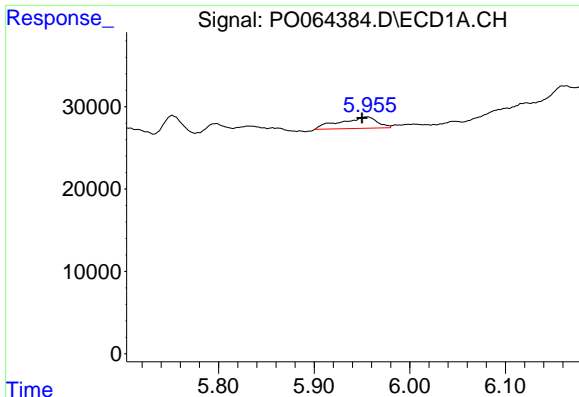
#22 AR-1248-2

R.T.: 5.752 min
 Delta R.T.: 0.005 min
 Response: 27311
 Conc: 32.96 ng/ml



#22 AR-1248-2

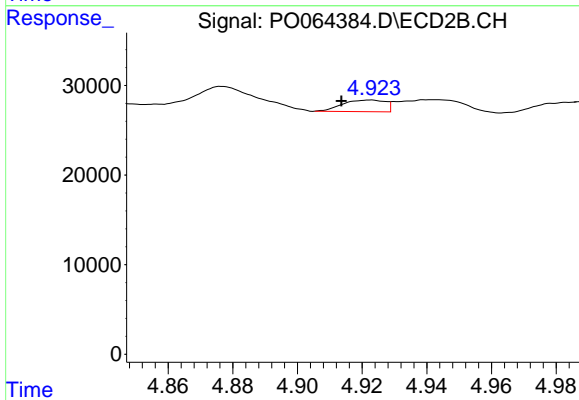
R.T.: 4.877 min
 Delta R.T.: 0.004 min
 Response: 39840
 Conc: 63.36 ng/ml



#23 AR-1248-3

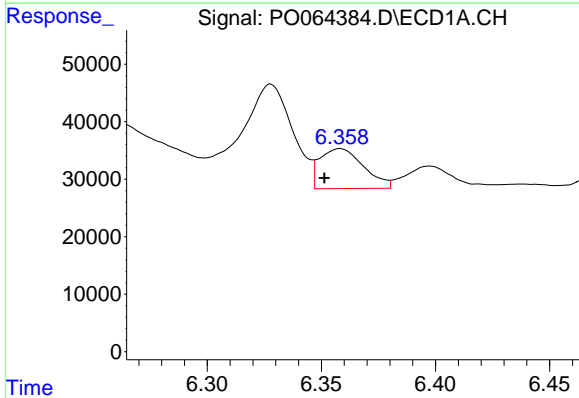
R.T.: 5.955 min
 Delta R.T.: 0.005 min
 Response: 37353
 Conc: 40.61 ng/ml

Instrument :
 ECD_O
 ClientSampled :
 12D



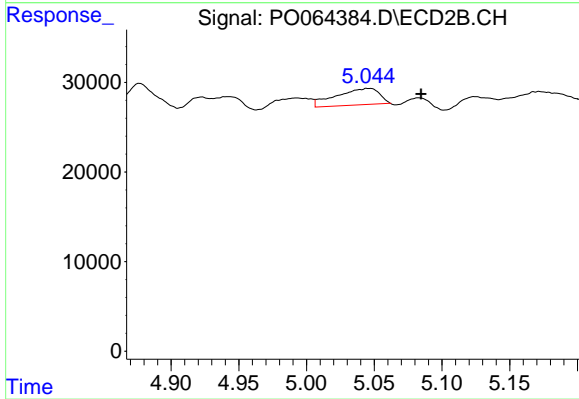
#23 AR-1248-3

R.T.: 4.923 min
 Delta R.T.: 0.009 min
 Response: 11941
 Conc: 18.51 ng/ml



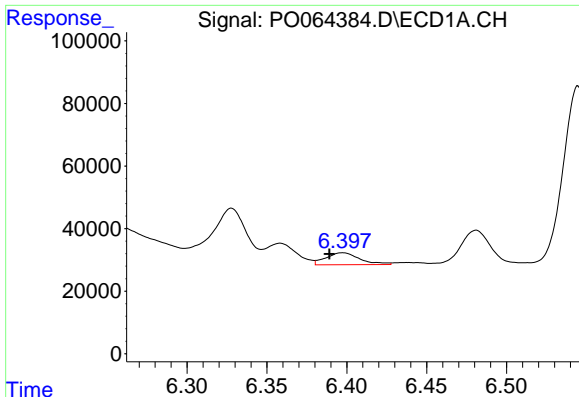
#24 AR-1248-4

R.T.: 6.358 min
 Delta R.T.: 0.007 min
 Response: 92437
 Conc: 83.40 ng/ml



#24 AR-1248-4

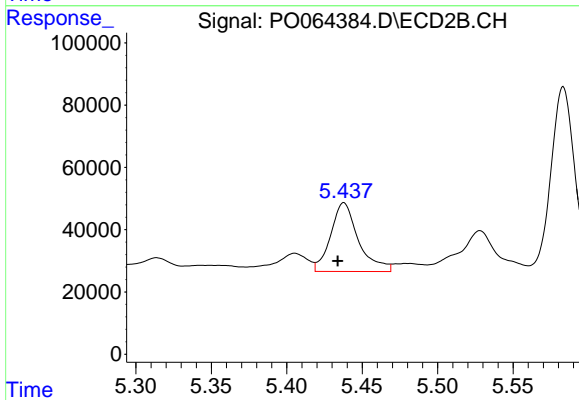
R.T.: 5.046 min
 Delta R.T.: -0.039 min
 Response: 40495
 Conc: 51.37 ng/ml



#25 AR-1248-5

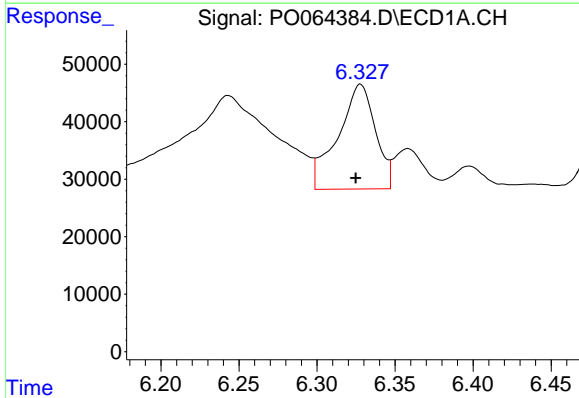
R.T.: 6.397 min
 Delta R.T.: 0.008 min
 Response: 56069
 Conc: 52.26 ng/ml

Instrument :
 ECD_O
 ClientSampled :
 12D



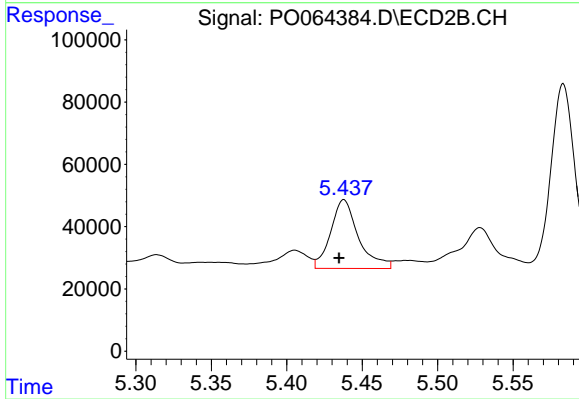
#25 AR-1248-5

R.T.: 5.438 min
 Delta R.T.: 0.004 min
 Response: 283625
 Conc: 234.10 ng/ml



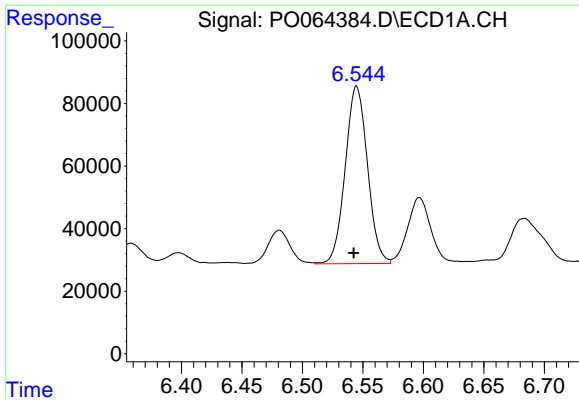
#26 AR-1254-1

R.T.: 6.328 min
 Delta R.T.: 0.003 min
 Response: 304939
 Conc: 186.84 ng/ml



#26 AR-1254-1

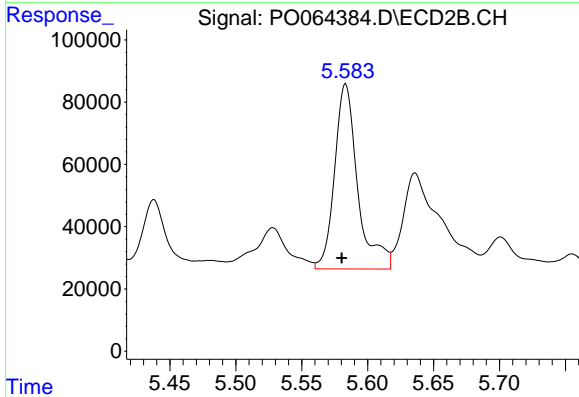
R.T.: 5.438 min
 Delta R.T.: 0.003 min
 Response: 283625
 Conc: 144.31 ng/ml



#27 AR-1254-2

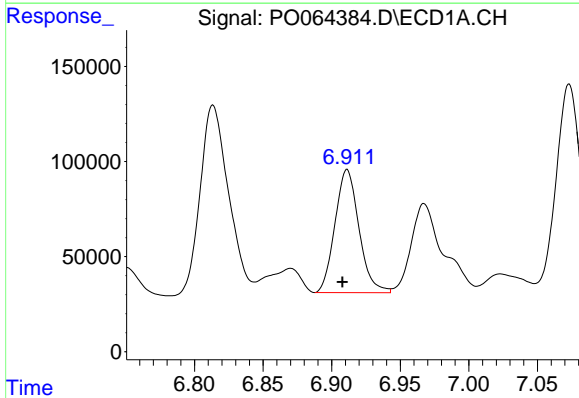
R.T.: 6.545 min
Delta R.T.: 0.002 min
Response: 725074
Conc: 278.14 ng/ml

Instrument :
ECD_O
ClientSampleId :
12D



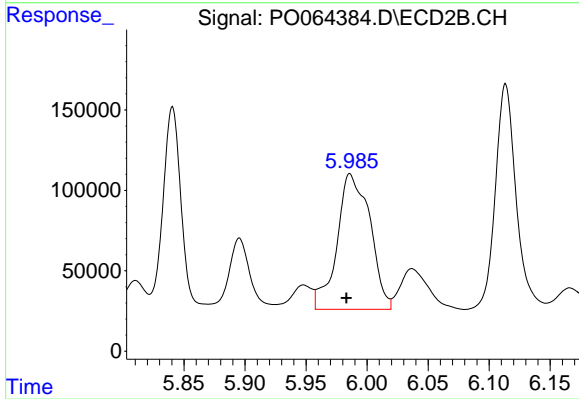
#27 AR-1254-2

R.T.: 5.583 min
Delta R.T.: 0.003 min
Response: 724663
Conc: 404.64 ng/ml



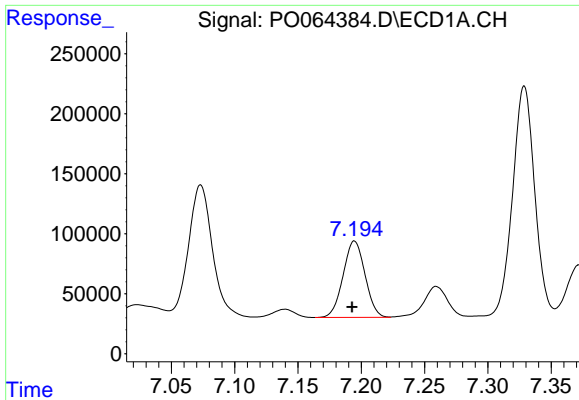
#28 AR-1254-3

R.T.: 6.911 min
Delta R.T.: 0.004 min
Response: 788339
Conc: 273.13 ng/ml



#28 AR-1254-3

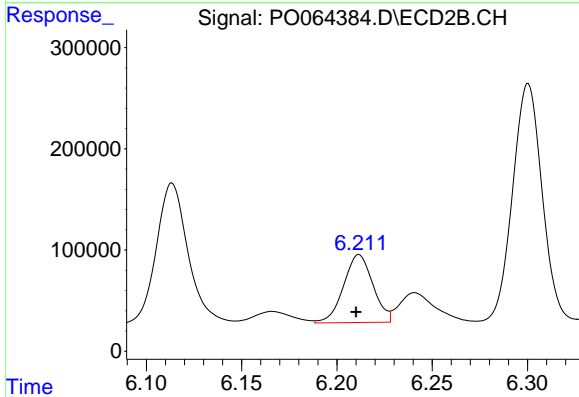
R.T.: 5.986 min
Delta R.T.: 0.003 min
Response: 1586938
Conc: 512.77 ng/ml



#29 AR-1254-4

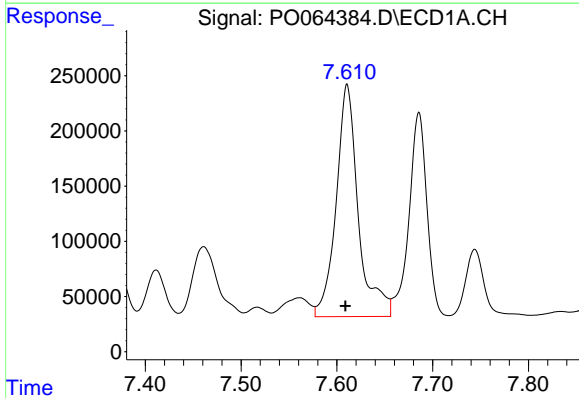
R.T.: 7.195 min
 Delta R.T.: 0.002 min
 Response: 765838
 Conc: 334.41 ng/ml

Instrument :
 ECD_O
 ClientSampleId :
 12D



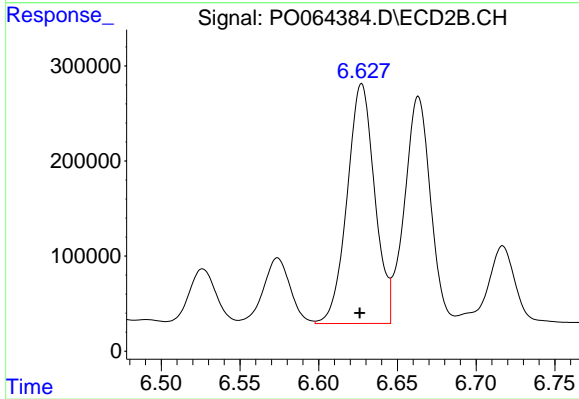
#29 AR-1254-4

R.T.: 6.212 min
 Delta R.T.: 0.002 min
 Response: 719002
 Conc: 348.48 ng/ml



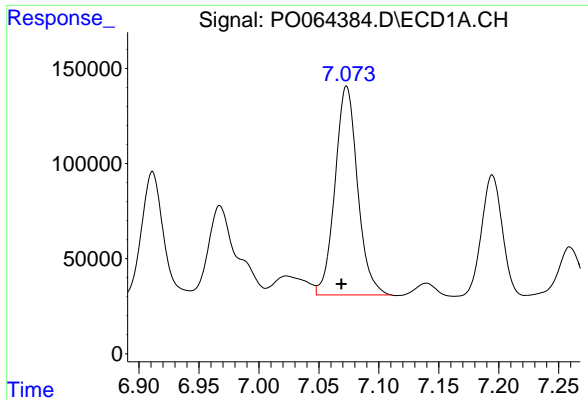
#30 AR-1254-5

R.T.: 7.611 min
 Delta R.T.: 0.002 min
 Response: 3369269
 Conc: 1318.56 ng/ml



#30 AR-1254-5

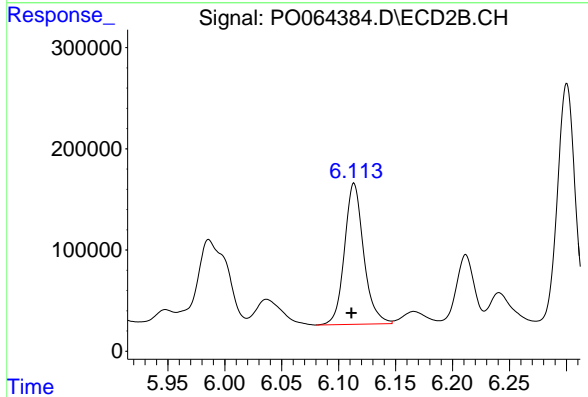
R.T.: 6.627 min
 Delta R.T.: 0.001 min
 Response: 3072255
 Conc: 1018.59 ng/ml



#31 AR-1260-1

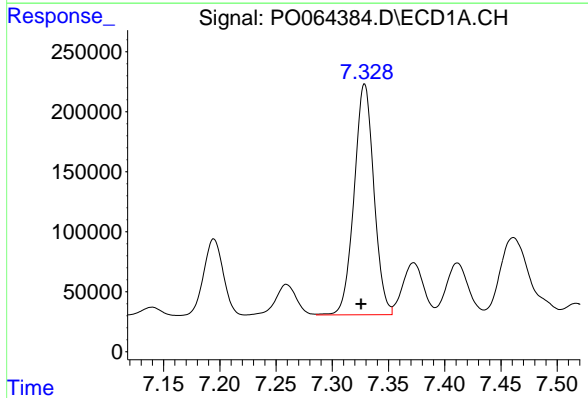
R.T.: 7.073 min
 Delta R.T.: 0.005 min
 Response: 1439255
 Conc: 762.65 ng/ml

Instrument :
 ECD_O
 ClientSampleId :
 12D



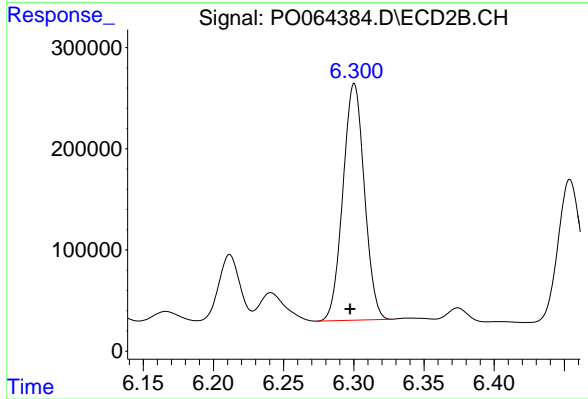
#31 AR-1260-1

R.T.: 6.114 min
 Delta R.T.: 0.002 min
 Response: 1635130
 Conc: 931.58 ng/ml



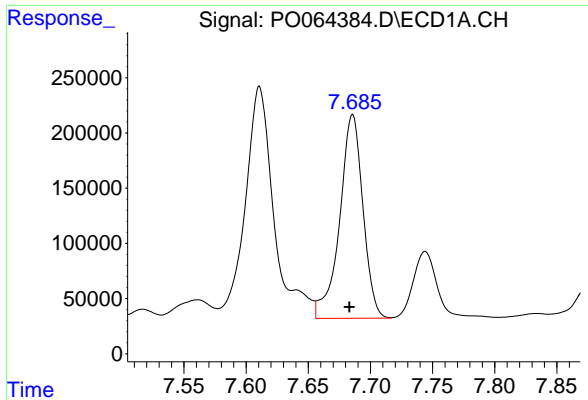
#32 AR-1260-2

R.T.: 7.329 min
 Delta R.T.: 0.003 min
 Response: 2351986
 Conc: 1005.68 ng/ml



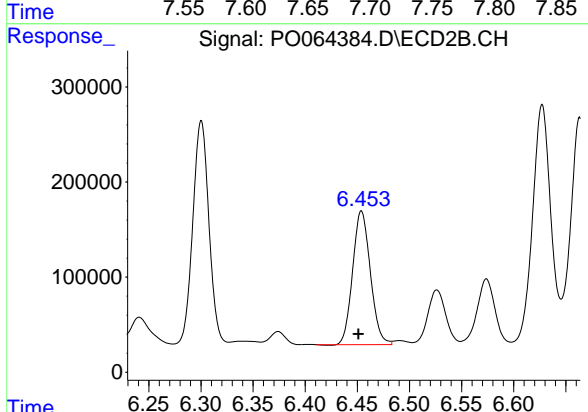
#32 AR-1260-2

R.T.: 6.300 min
 Delta R.T.: 0.003 min
 Response: 2488121
 Conc: 1118.37 ng/ml

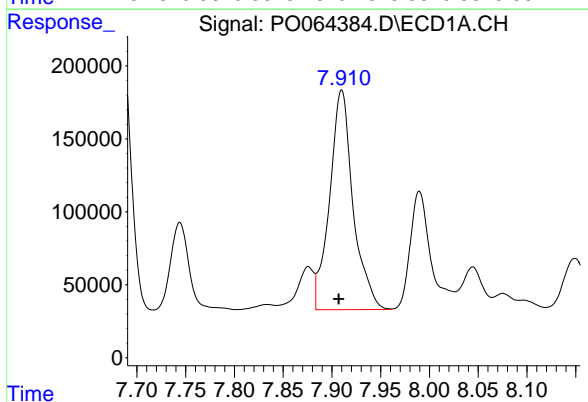


#33 AR-1260-3
 R.T.: 7.686 min
 Delta R.T.: 0.003 min
 Response: 2406559
 Conc: 1299.93 ng/ml

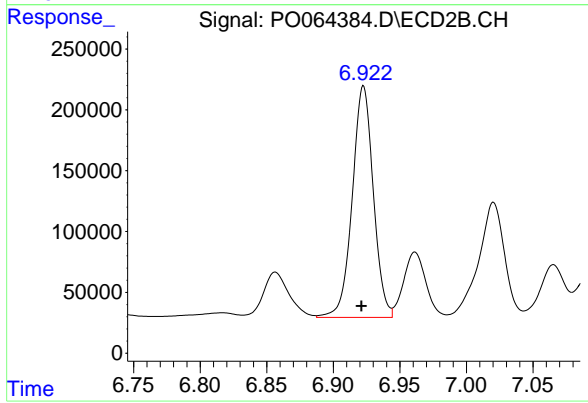
Instrument :
 ECD_O
 ClientSampled :
 12D



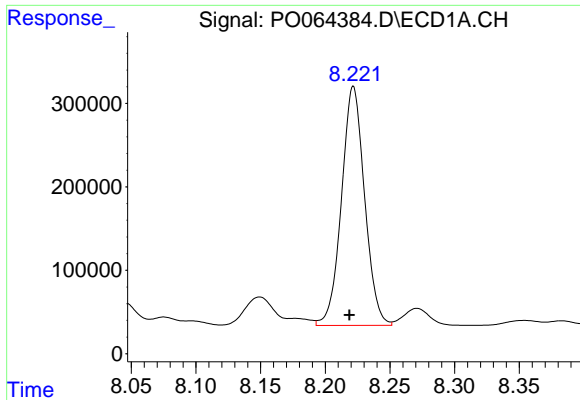
#33 AR-1260-3
 R.T.: 6.454 min
 Delta R.T.: 0.003 min
 Response: 1663881
 Conc: 818.35 ng/ml



#34 AR-1260-4
 R.T.: 7.910 min
 Delta R.T.: 0.003 min
 Response: 2519954
 Conc: 1149.83 ng/ml



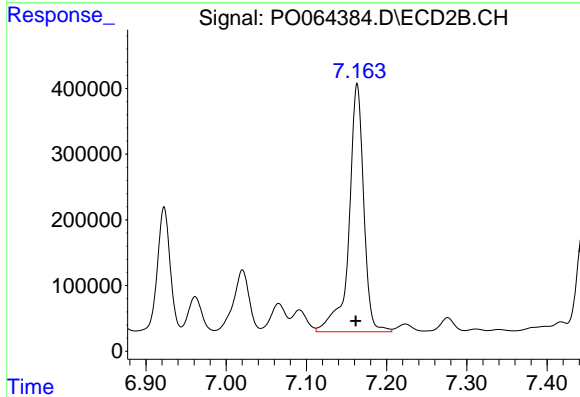
#34 AR-1260-4
 R.T.: 6.923 min
 Delta R.T.: 0.001 min
 Response: 2094809
 Conc: 1129.42 ng/ml



#35 AR-1260-5

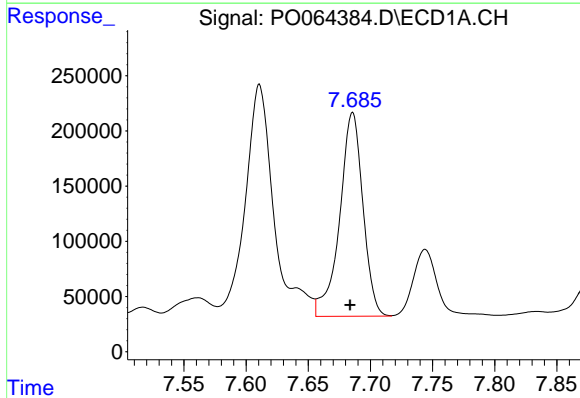
R.T.: 8.222 min
 Delta R.T.: 0.003 min
 Response: 3559319
 Conc: 806.19 ng/ml

Instrument :
 ECD_O
 ClientSampled :
 12D



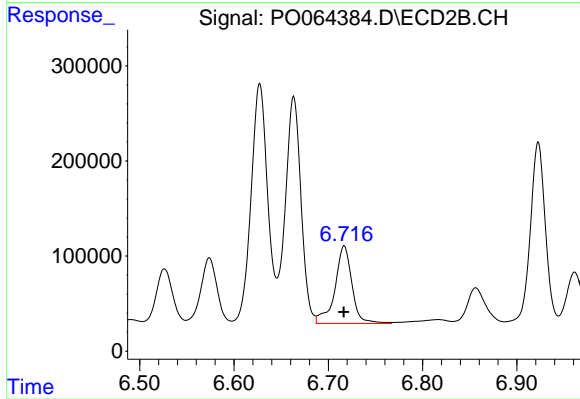
#35 AR-1260-5

R.T.: 7.163 min
 Delta R.T.: 0.002 min
 Response: 4813710
 Conc: 994.28 ng/ml



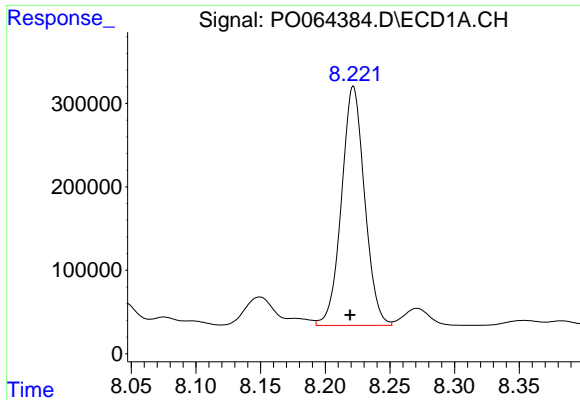
#36 AR-1262-1

R.T.: 7.686 min
 Delta R.T.: 0.002 min
 Response: 2406559
 Conc: 806.04 ng/ml



#36 AR-1262-1

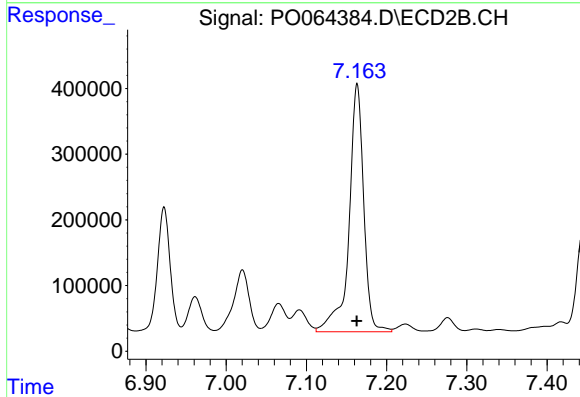
R.T.: 6.717 min
 Delta R.T.: 0.000 min
 Response: 1024519
 Conc: 815.36 ng/ml



#37 AR-1262-2

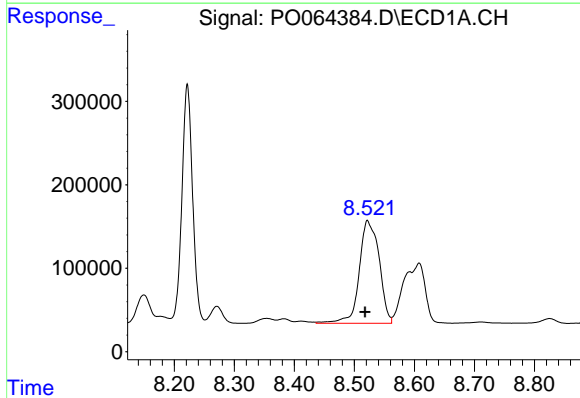
R.T.: 8.222 min
Delta R.T.: 0.002 min
Response: 3559319
Conc: 645.54 ng/ml

Instrument :
ECD_O
ClientSampled :
12D



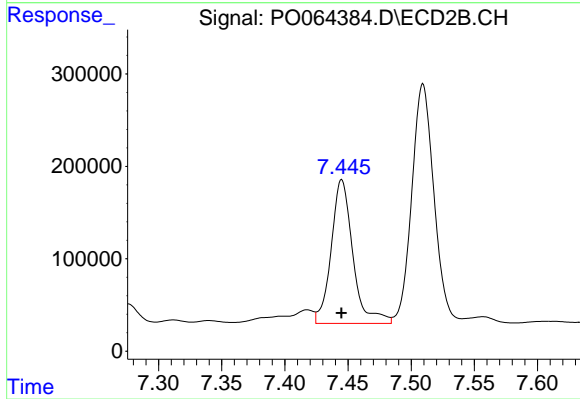
#37 AR-1262-2

R.T.: 7.163 min
Delta R.T.: 0.000 min
Response: 4813710
Conc: 806.95 ng/ml



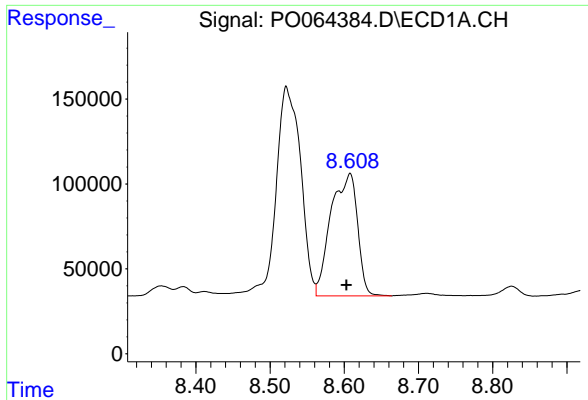
#38 AR-1262-3

R.T.: 8.522 min
Delta R.T.: 0.004 min
Response: 2831011
Conc: 731.67 ng/ml



#38 AR-1262-3

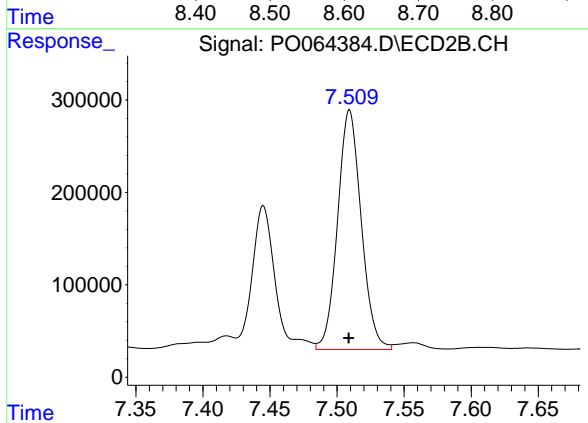
R.T.: 7.445 min
Delta R.T.: 0.000 min
Response: 1862524
Conc: 798.94 ng/ml



#39 AR-1262-4

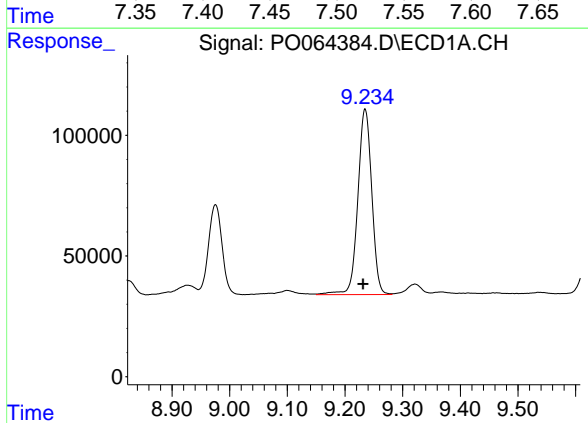
R.T.: 8.608 min
 Delta R.T.: 0.005 min
 Response: 1796744
 Conc: 614.63 ng/ml

Instrument :
 ECD_O
 ClientSampled :
 12D



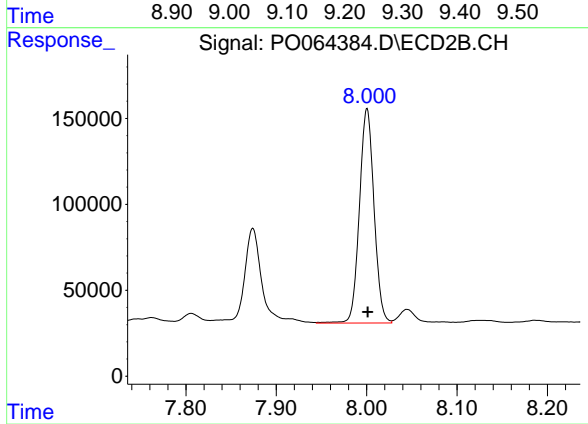
#39 AR-1262-4

R.T.: 7.509 min
 Delta R.T.: 0.000 min
 Response: 3175218
 Conc: 713.04 ng/ml



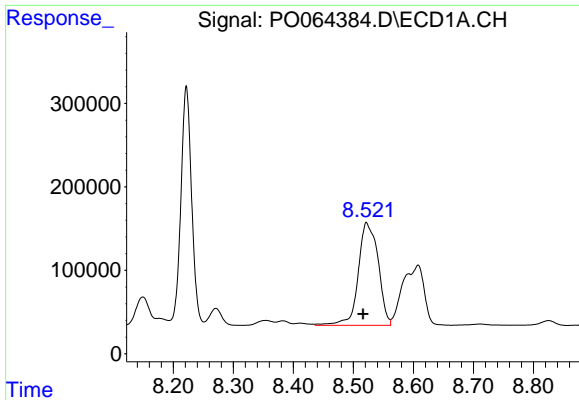
#40 AR-1262-5

R.T.: 9.235 min
 Delta R.T.: 0.004 min
 Response: 1290120
 Conc: 614.67 ng/ml



#40 AR-1262-5

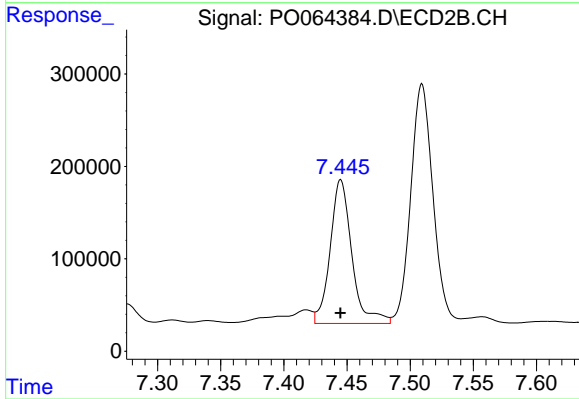
R.T.: 8.001 min
 Delta R.T.: 0.000 min
 Response: 1402807
 Conc: 664.20 ng/ml



#41 AR-1268-1

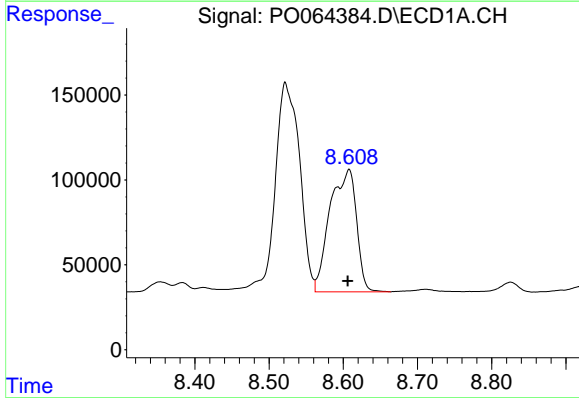
R.T.: 8.522 min
 Delta R.T.: 0.006 min
 Response: 2831011
 Conc: 434.21 ng/ml

Instrument :
 ECD_O
 ClientSampleId :
 12D



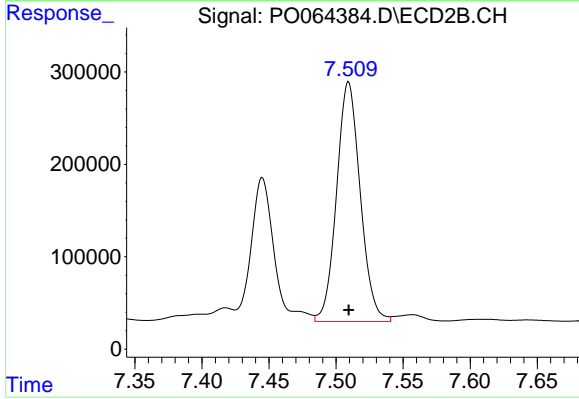
#41 AR-1268-1

R.T.: 7.445 min
 Delta R.T.: 0.000 min
 Response: 1862524
 Conc: 266.77 ng/ml



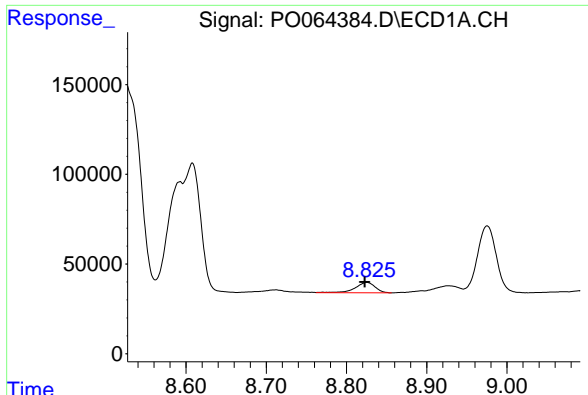
#42 AR-1268-2

R.T.: 8.608 min
 Delta R.T.: 0.002 min
 Response: 1796744
 Conc: 297.40 ng/ml



#42 AR-1268-2

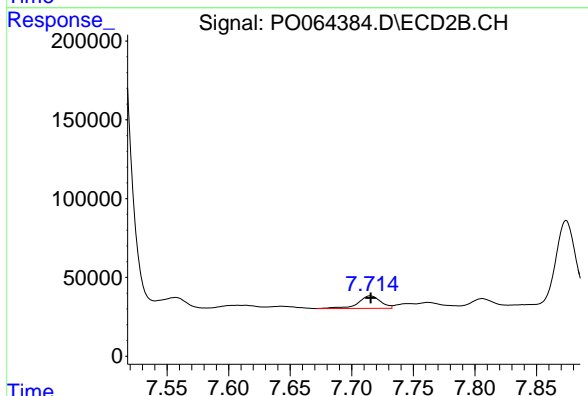
R.T.: 7.509 min
 Delta R.T.: 0.000 min
 Response: 3175218
 Conc: 495.93 ng/ml



#43 AR-1268-3

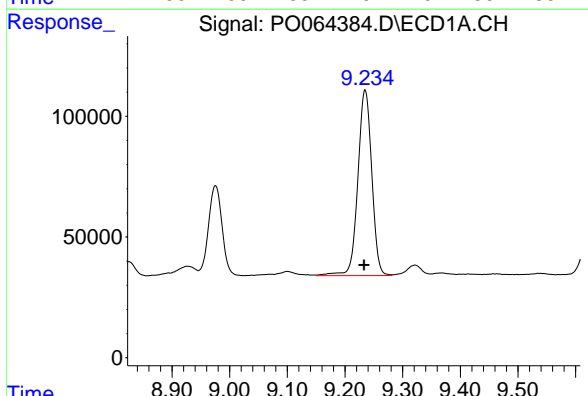
R.T.: 8.825 min
 Delta R.T.: 0.003 min
 Response: 100886
 Conc: 20.32 ng/ml

Instrument :
 ECD_O
 ClientSampleId :
 12D



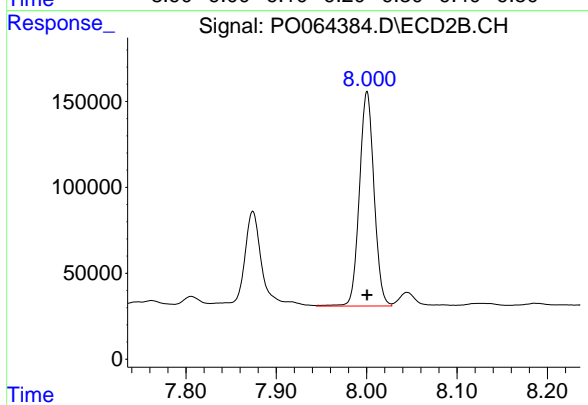
#43 AR-1268-3

R.T.: 7.715 min
 Delta R.T.: 0.000 min
 Response: 101225
 Conc: 19.33 ng/ml



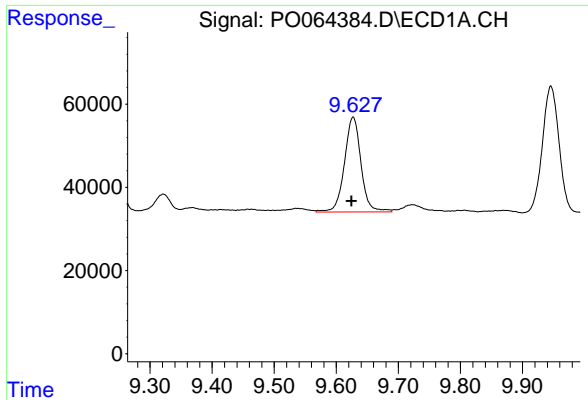
#44 AR-1268-4

R.T.: 9.235 min
 Delta R.T.: 0.002 min
 Response: 1290120
 Conc: 551.41 ng/ml



#44 AR-1268-4

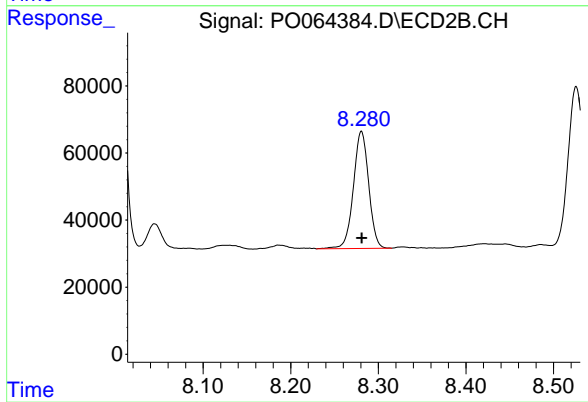
R.T.: 8.001 min
 Delta R.T.: 0.000 min
 Response: 1402807
 Conc: 600.47 ng/ml



#45 AR-1268-5

R.T.: 9.627 min
Delta R.T.: 0.003 min
Response: 422369
Conc: 27.49 ng/ml

Instrument :
ECD_O
ClientSampleId :
12D



#45 AR-1268-5

R.T.: 8.281 min
Delta R.T.: 0.000 min
Response: 422714
Conc: 25.59 ng/ml