

Data Path : Z:\pestpcbsrv\HPCHEM1\ECD_0\Data\PO120519\
 Data File : PO0CCC6.D
 Signal(s) : Signal #1: ECD1A.CH Signal #2: ECD2B.CH
 Acq On : 06 Dec 2019 7:30
 Operator : SM/AJ
 Sample : AR1660CCC500
 Misc :
 ALS Vial : 100 Sample Multiplier: 1

Instrument :
 ECD_O
 ClientSampled :

Integration File signal 1: autoint1.e
 Integration File signal 2: autoint2.e
 Quant Time: Dec 06 07:59:48 2019
 Quant Method : Z:\pestpcbsrv\HPCHEM1\ECD_0\methods\PO112719.M
 Quant Title : GC EXTRACTABLES
 QLast Update : Thu Nov 28 01:28:08 2019
 Response via : Initial Calibration
 Integrator: ChemStation 6890 Scale Mode: Small noise peaks clipped

Volume Inj. : 2 µl
 Signal #1 Phase : ZB-MR1 Signal #2 Phase: ZB-MR2
 Signal #1 Info : 30Mx0.32mmx 0.50µ Signal #2 Info : 30M x 0.32mm x 0.25µm

Compound	RT#1	RT#2	Resp#1	Resp#2	ng/ml	ng/ml
System Monitoring Compounds						
1) SA Tetrachlo...	4.318	3.567	1947061	1768386	65.745	74.348
2) SA Decachlor...	9.941	8.523	1928288	2094537	47.050	51.273
Target Compounds						
3) L1 AR-1016-1	5.479	4.642	822069	772758	633.264	738.061
4) L1 AR-1016-2	5.501	4.660	1188293	1059025	651.795	750.728
5) L1 AR-1016-3	5.562	4.834	733873	563984	639.408	732.234
6) L1 AR-1016-4	5.661	4.875	604643	473070	642.947	727.219
7) L1 AR-1016-5	5.952	5.087	610068	606716	626.923	728.770
8) L2 AR-1221-1	4.522	3.777	74843	61831	210.674	236.342
9) L2 AR-1221-2	4.614	3.863	111312	88067	402.594	440.657
10) L2 AR-1221-3	4.689	3.939	404126	341732	481.284	528.474
11) L3 AR-1232-1	4.689	3.939	404126	341732	315.212	337.444
12) L3 AR-1232-2	5.213	4.660	573826	1059025	816.798	971.403
13) L3 AR-1232-3	5.501	4.834	1188293	563984	858.083	970.117
14) L3 AR-1232-4	5.661	4.916	604643	575063	849.836	1083.218 #
15) L3 AR-1232-5	5.750	5.087	555139	606716	985.662	1036.201
16) L4 AR-1242-1	5.479	4.642	822069	772758	863.342	1009.188
17) L4 AR-1242-2	5.501	4.660	1188293	1059025	879.829	1025.025
18) L4 AR-1242-3	5.562	4.834	733873	563984	855.209	1006.361
19) L4 AR-1242-4	5.661	4.916	604643	575063	864.751	1013.908
20) L4 AR-1242-5	6.393	5.436	104467	453506	123.656	577.862 #
21) L5 AR-1248-1	5.479	4.642	822069	772758	1465.614	1720.909
22) L5 AR-1248-2	5.750	4.875	555139	473070	669.891	752.347
23) L5 AR-1248-3	5.952	4.916	610068	575063	663.210	891.256 #
24) L5 AR-1248-4	6.354	5.087	121412	606716	109.538	769.690 #
25) L5 AR-1248-5	6.393	5.436	104467	453506	97.362	374.315 #
26) L6 AR-1254-1	6.326	5.436	428942	453506	262.812	230.749
27) L6 AR-1254-2	6.544	5.581	478679	423420	183.624	236.428 #
28) L6 AR-1254-3	6.909	5.997	279133	811569	96.711	262.235 #
29) L6 AR-1254-4	7.193	6.210	198718	120235	86.771	58.275 #
30) L6 AR-1254-5	7.610	6.625	1417790	1458029	554.853	483.400
31) L7 AR-1260-1	7.072	6.112	1037955	1112465	550.005	633.805
32) L7 AR-1260-2	7.328	6.299	1231630	1349556	526.630	606.603
33) L7 AR-1260-3	7.684	6.452	931462	1241561	503.140	610.637
34) L7 AR-1260-4	7.909	6.921	1056873	1022623	482.241	551.351
35) L7 AR-1260-5	8.220	7.162	1914789	2325652	433.704	480.366
36) L8 AR-1262-1	7.684	6.715	931462	563051	311.981	448.101 #
37) L8 AR-1262-2	8.220	7.162	1914789	2325652	347.277	389.863
38) L8 AR-1262-3	8.532	7.444	1246463	519008	322.146	222.631 #
39) L8 AR-1262-4	8.587	7.507	815966	1654947	279.127	371.640 #
40) L8 AR-1262-5	9.233	7.999	569359	566176	271.267	268.072
41) L9 AR-1268-1	8.532	7.444	1246463	519008	191.178	74.337 #

Data Path : Z:\pestpcbsrv\HPCHEM1\ECD_0\Data\PO120519\
 Data File : PO0CCC6.D
 Signal(s) : Signal #1: ECD1A.CH Signal #2: ECD2B.CH
 Acq On : 06 Dec 2019 7:30
 Operator : SM/AJ
 Sample : AR1660CCC500
 Misc :
 ALS Vial : 100 Sample Multiplier: 1

Instrument :
 ECD_0
 ClientSampleId :

Integration File signal 1: autoint1.e
 Integration File signal 2: autoint2.e
 Quant Time: Dec 06 07:59:48 2019
 Quant Method : Z:\pestpcbsrv\HPCHEM1\ECD_0\methods\PO112719.M
 Quant Title : GC EXTRACTABLES
 QLast Update : Thu Nov 28 01:28:08 2019
 Response via : Initial Calibration
 Integrator: ChemStation 6890 Scale Mode: Small noise peaks clipped

Volume Inj. : 2 µl
 Signal #1 Phase : ZB-MR1 Signal #2 Phase: ZB-MR2
 Signal #1 Info : 30Mx0.32mmx 0.50µ Signal #2 Info : 30M x 0.32mm x 0.25µm

	Compound	RT#1	RT#2	Resp#1	Resp#2	ng/ml	ng/ml
42)	L9 AR-1268-2	8.587	7.507	815966	1654947	135.060	258.483 #
43)	L9 AR-1268-3	8.823	7.713	68238	38899	13.744	7.427 #
44)	L9 AR-1268-4	9.233	7.999	569359	566176	243.349	242.350
45)	L9 AR-1268-5	9.624	8.279	165453	153720	10.770	9.307

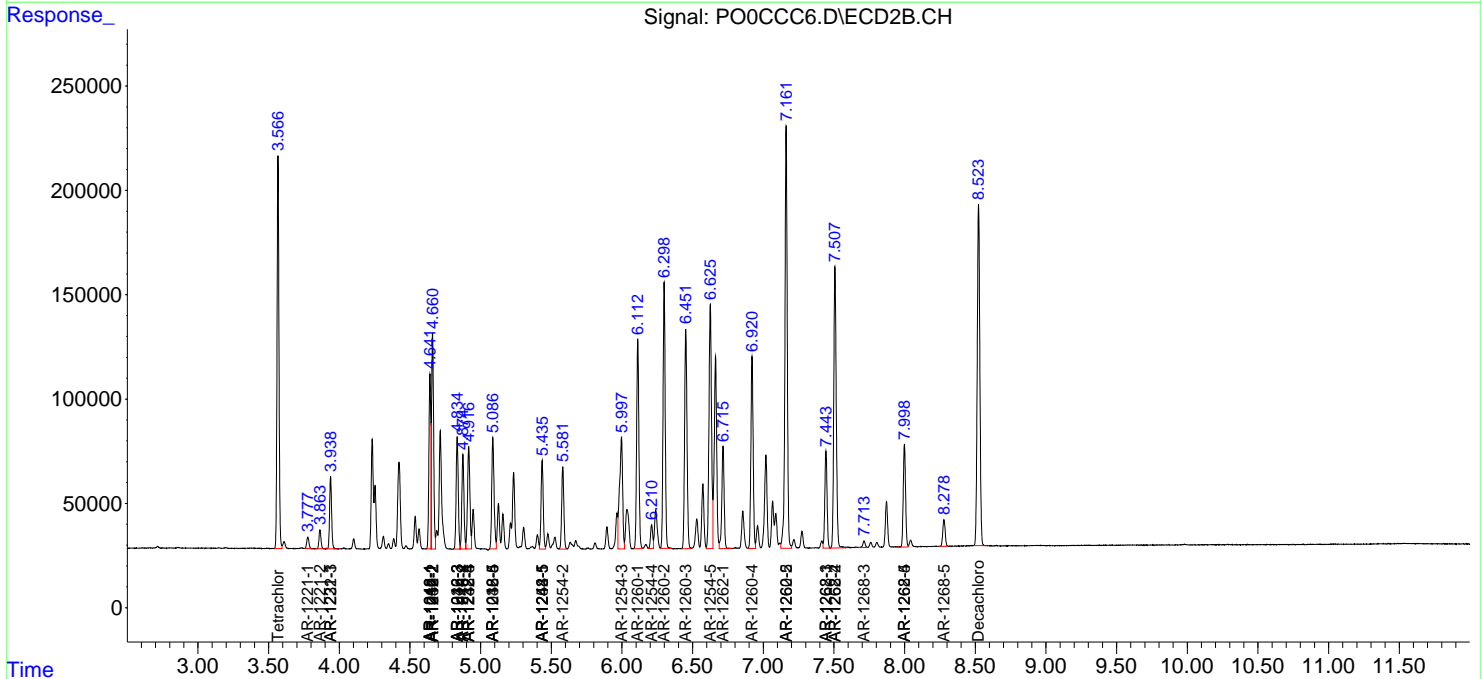
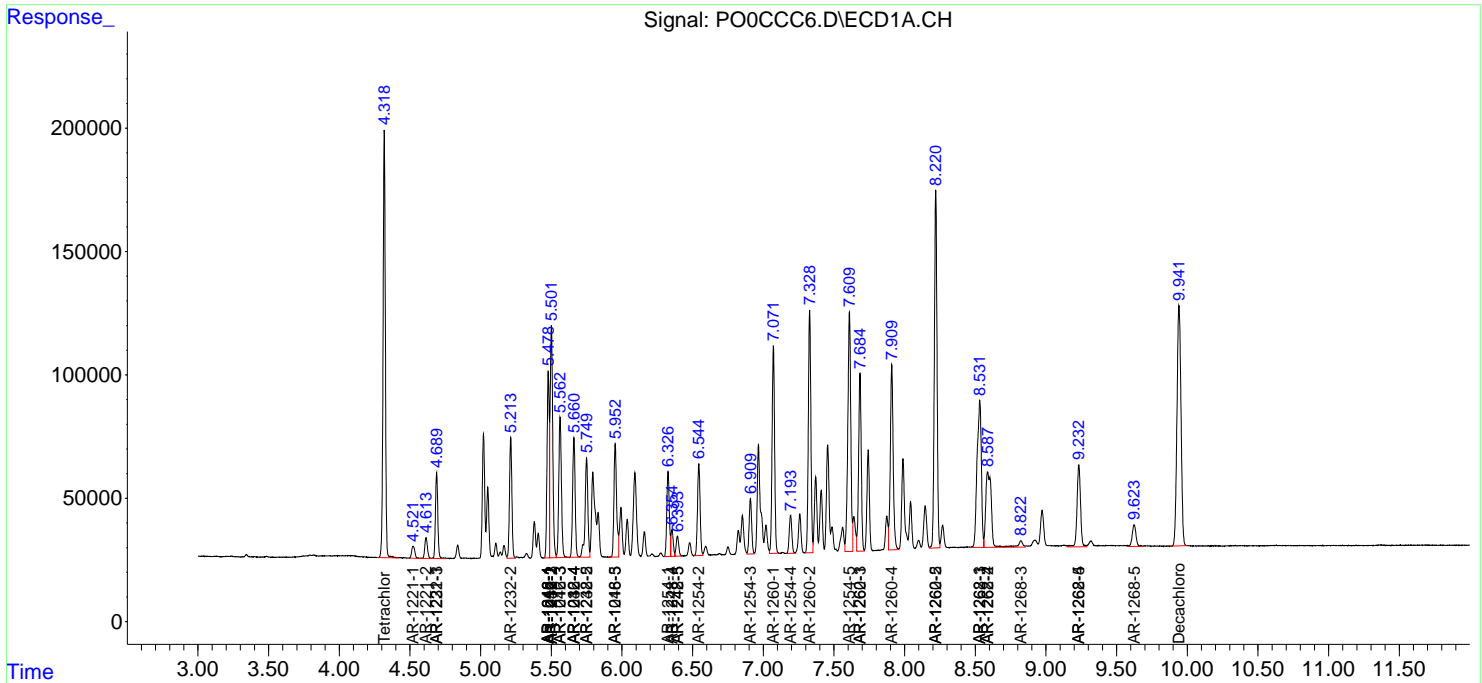
(f)=RT Delta > 1/2 Window (#)=Amounts differ by > 25% (m)=manual int.

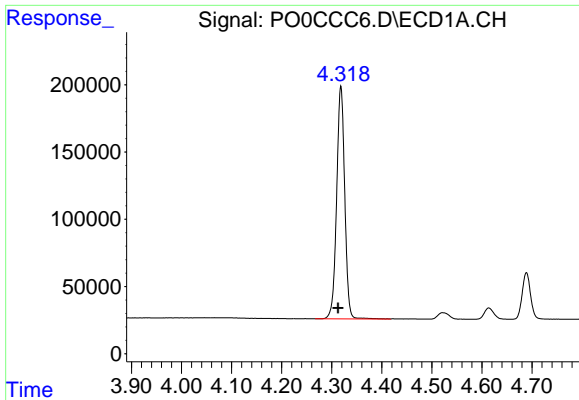
Data Path : Z:\pestpcbsrv\HPCHEM1\ECD_O\Data\PO120519\
 Data File : P00CCC6.D
 Signal(s) : Signal #1: ECD1A.CH Signal #2: ECD2B.CH
 Acq On : 06 Dec 2019 7:30
 Operator : SM/AJ
 Sample : AR1660CCC500
 Misc :
 ALS Vial : 100 Sample Multiplier: 1

Instrument :
 ECD_O
 ClientSampled :

Integration File signal 1: autoint1.e
 Integration File signal 2: autoint2.e
 Quant Time: Dec 06 07:59:48 2019
 Quant Method : Z:\pestpcbsrv\HPCHEM1\ECD_O\methods\PO112719.M
 Quant Title : GC EXTRACTABLES
 QLast Update : Thu Nov 28 01:28:08 2019
 Response via : Initial Calibration
 Integrator: ChemStation 6890 Scale Mode: Small noise peaks clipped

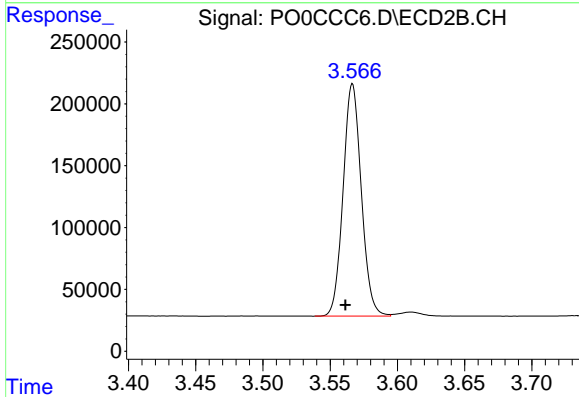
Volume Inj. : 2 µl
 Signal #1 Phase : ZB-MR1 Signal #2 Phase: ZB-MR2
 Signal #1 Info : 30Mx0.32mmx 0.50µ Signal #2 Info : 30M x 0.32mm x 0.25µm



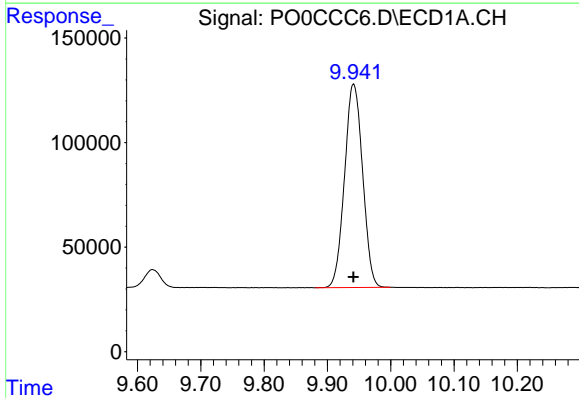


#1 Tetrachloro-m-xylene
 R.T.: 4.318 min
 Delta R.T.: 0.005 min
 Response: 1947061
 Conc: 65.74 ng/ml

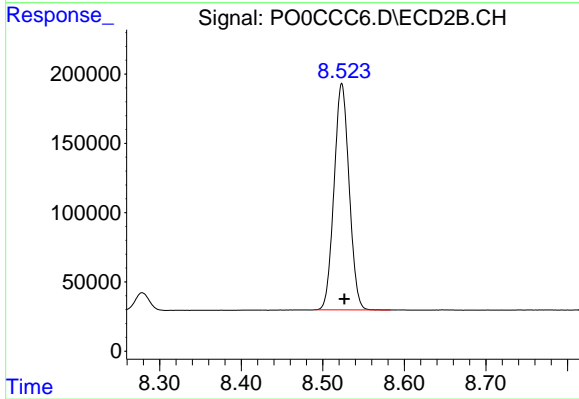
Instrument :
 ECD_O
 ClientSampleId :



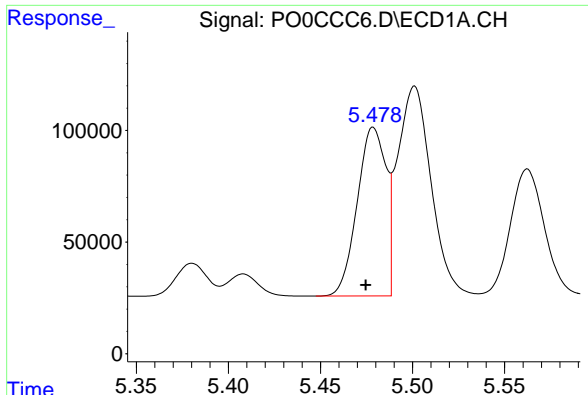
#1 Tetrachloro-m-xylene
 R.T.: 3.567 min
 Delta R.T.: 0.005 min
 Response: 1768386
 Conc: 74.35 ng/ml



#2 Decachlorobiphenyl
 R.T.: 9.941 min
 Delta R.T.: 0.000 min
 Response: 1928288
 Conc: 47.05 ng/ml



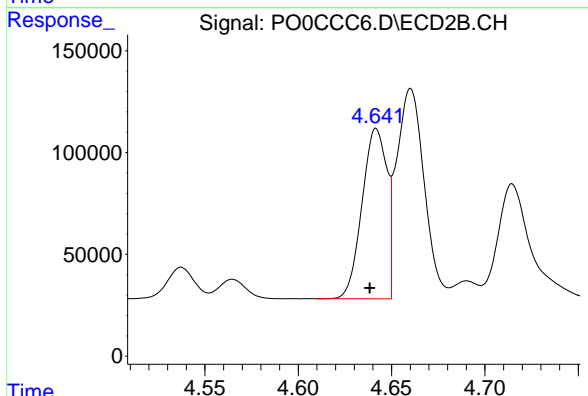
#2 Decachlorobiphenyl
 R.T.: 8.523 min
 Delta R.T.: -0.003 min
 Response: 2094537
 Conc: 51.27 ng/ml



#3 AR-1016-1

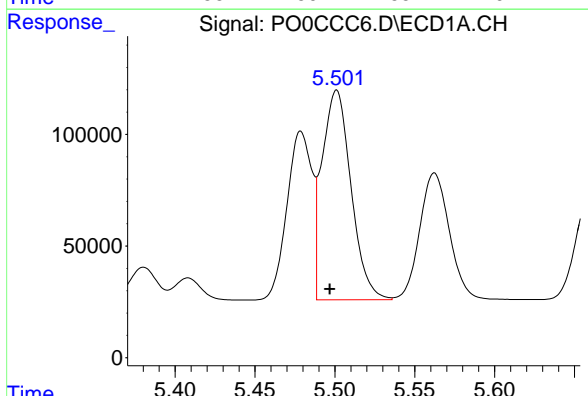
R.T.: 5.479 min
 Delta R.T.: 0.004 min
 Response: 822069
 Conc: 633.26 ng/ml

Instrument :
 ECD_O
 ClientSampled :



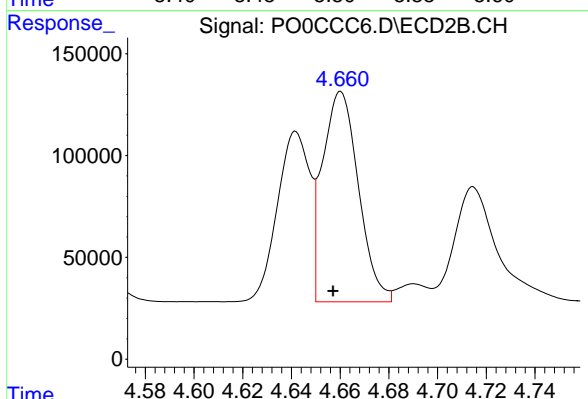
#3 AR-1016-1

R.T.: 4.642 min
 Delta R.T.: 0.003 min
 Response: 772758
 Conc: 738.06 ng/ml



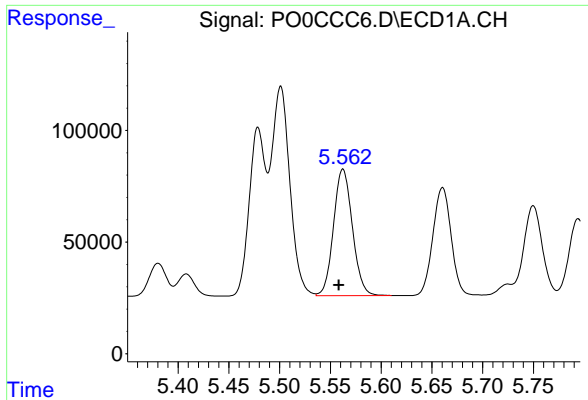
#4 AR-1016-2

R.T.: 5.501 min
 Delta R.T.: 0.004 min
 Response: 1188293
 Conc: 651.79 ng/ml



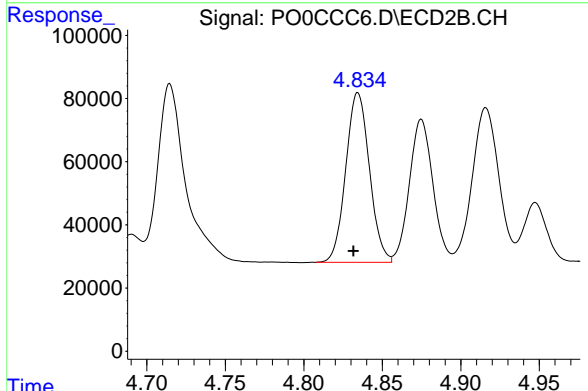
#4 AR-1016-2

R.T.: 4.660 min
 Delta R.T.: 0.003 min
 Response: 1059025
 Conc: 750.73 ng/ml

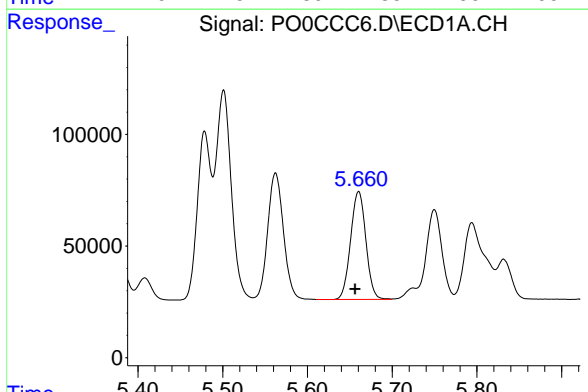


#5 AR-1016-3
 R.T.: 5.562 min
 Delta R.T.: 0.004 min
 Response: 733873
 Conc: 639.41 ng/ml

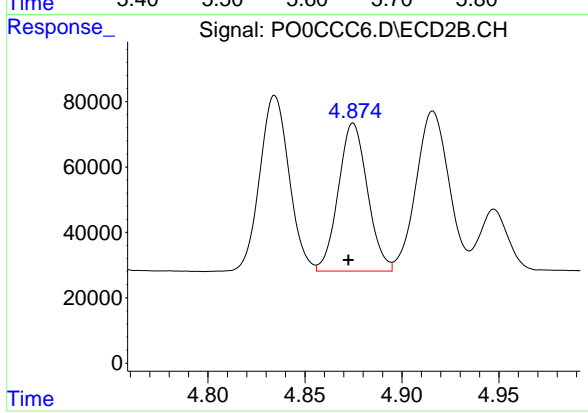
Instrument :
 ECD_O
 ClientSampled :



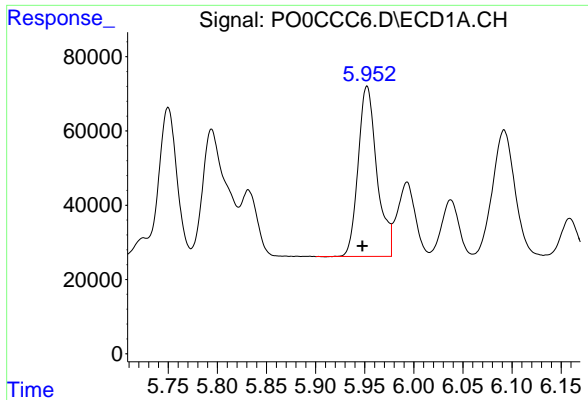
#5 AR-1016-3
 R.T.: 4.834 min
 Delta R.T.: 0.003 min
 Response: 563984
 Conc: 732.23 ng/ml



#6 AR-1016-4
 R.T.: 5.661 min
 Delta R.T.: 0.004 min
 Response: 604643
 Conc: 642.95 ng/ml

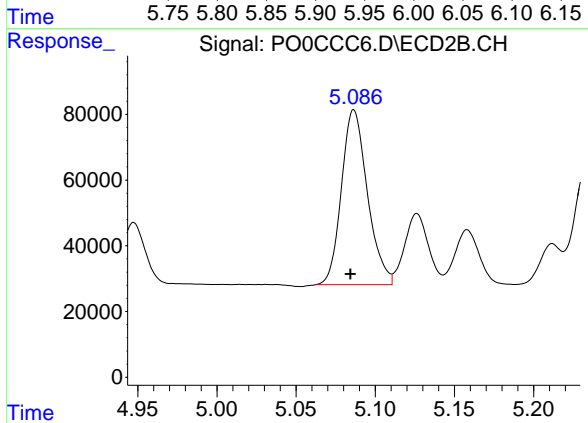


#6 AR-1016-4
 R.T.: 4.875 min
 Delta R.T.: 0.002 min
 Response: 473070
 Conc: 727.22 ng/ml

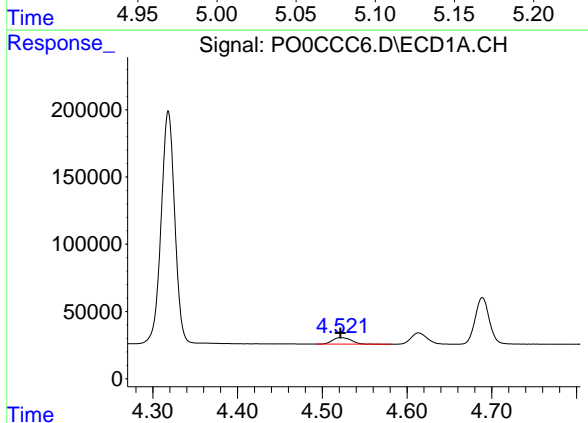


#7 AR-1016-5
 R.T.: 5.952 min
 Delta R.T.: 0.005 min
 Response: 610068
 Conc: 626.92 ng/ml

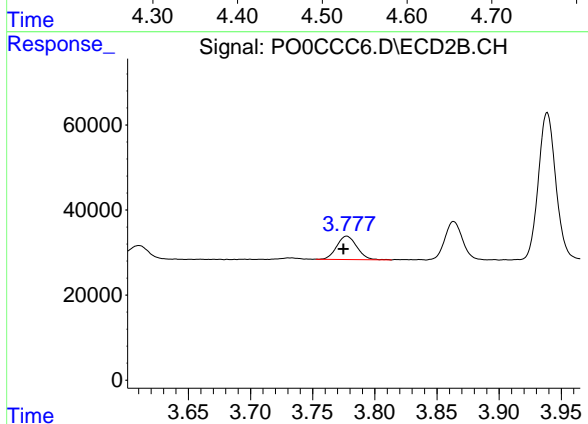
Instrument :
 ECD_O
 ClientSampled :



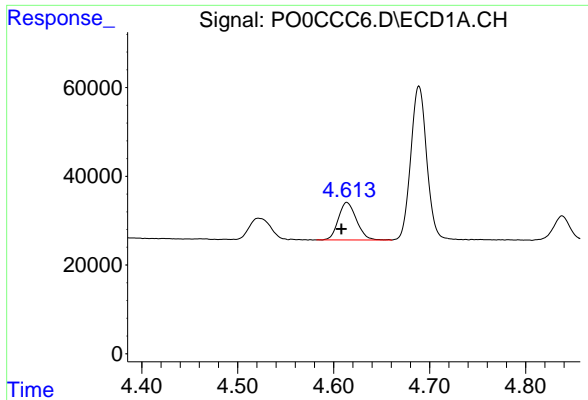
#7 AR-1016-5
 R.T.: 5.087 min
 Delta R.T.: 0.002 min
 Response: 606716
 Conc: 728.77 ng/ml



#8 AR-1221-1
 R.T.: 4.522 min
 Delta R.T.: 0.000 min
 Response: 74843
 Conc: 210.67 ng/ml



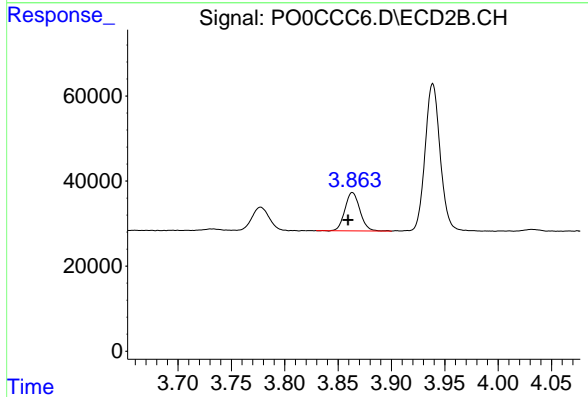
#8 AR-1221-1
 R.T.: 3.777 min
 Delta R.T.: 0.003 min
 Response: 61831
 Conc: 236.34 ng/ml



#9 AR-1221-2

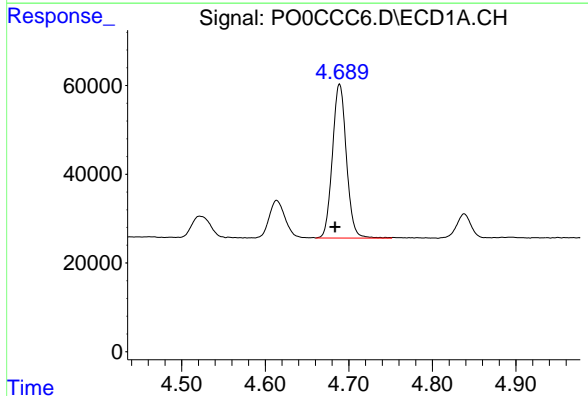
R.T.: 4.614 min
 Delta R.T.: 0.005 min
 Response: 111312
 Conc: 402.59 ng/ml

Instrument :
 ECD_O
 ClientSampleId :



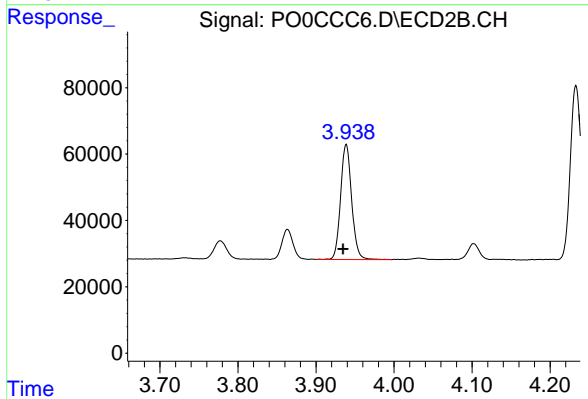
#9 AR-1221-2

R.T.: 3.863 min
 Delta R.T.: 0.004 min
 Response: 88067
 Conc: 440.66 ng/ml



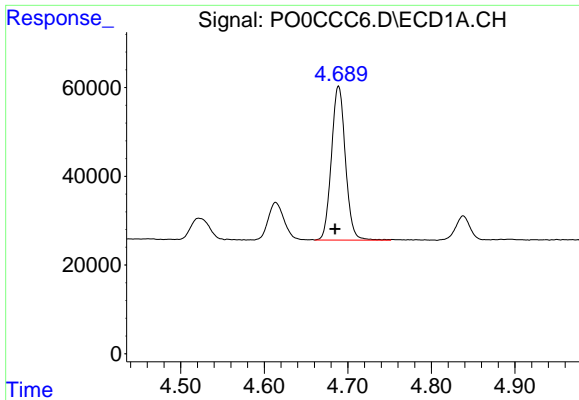
#10 AR-1221-3

R.T.: 4.689 min
 Delta R.T.: 0.005 min
 Response: 404126
 Conc: 481.28 ng/ml



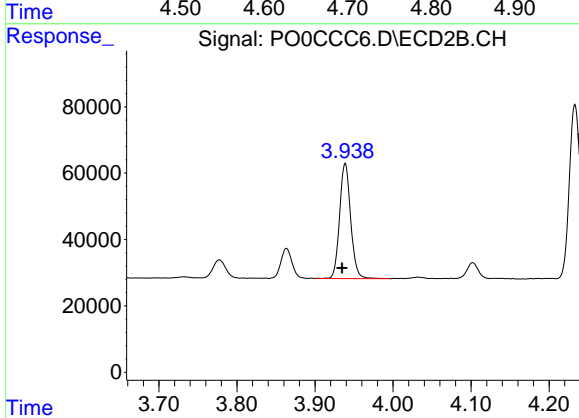
#10 AR-1221-3

R.T.: 3.939 min
 Delta R.T.: 0.004 min
 Response: 341732
 Conc: 528.47 ng/ml

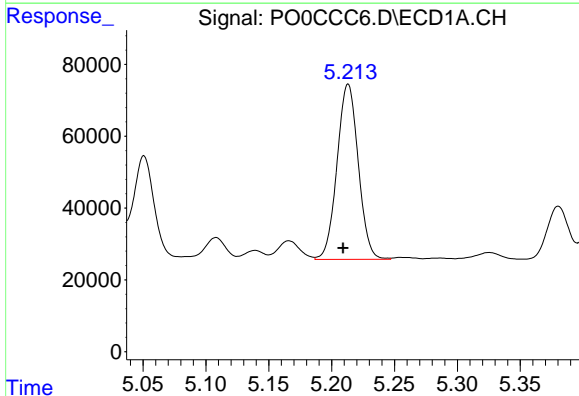


#11 AR-1232-1
 R.T.: 4.689 min
 Delta R.T.: 0.004 min
 Response: 404126
 Conc: 315.21 ng/ml

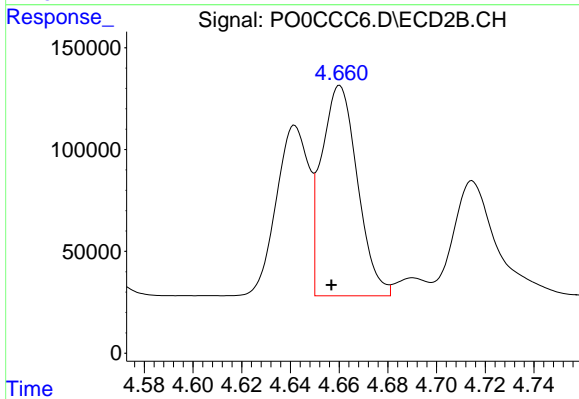
Instrument :
 ECD_O
 ClientSampled :



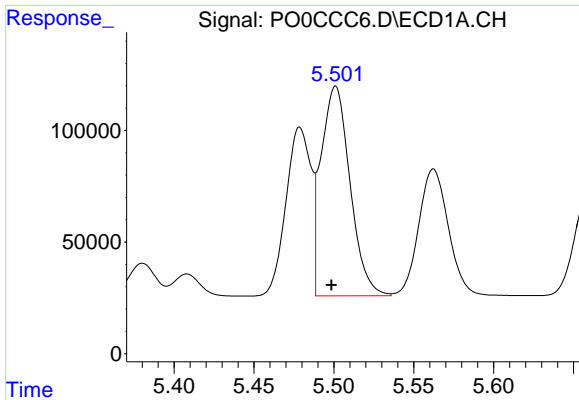
#11 AR-1232-1
 R.T.: 3.939 min
 Delta R.T.: 0.004 min
 Response: 341732
 Conc: 337.44 ng/ml



#12 AR-1232-2
 R.T.: 5.213 min
 Delta R.T.: 0.004 min
 Response: 573826
 Conc: 816.80 ng/ml



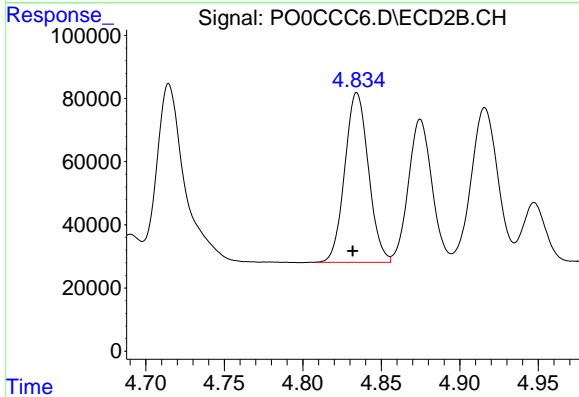
#12 AR-1232-2
 R.T.: 4.660 min
 Delta R.T.: 0.003 min
 Response: 1059025
 Conc: 971.40 ng/ml



#13 AR-1232-3

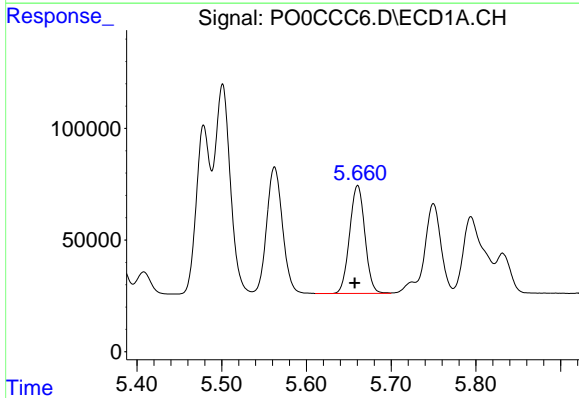
R.T.: 5.501 min
 Delta R.T.: 0.003 min
 Response: 1188293
 Conc: 858.08 ng/ml

Instrument :
 ECD_O
 ClientSampleId :



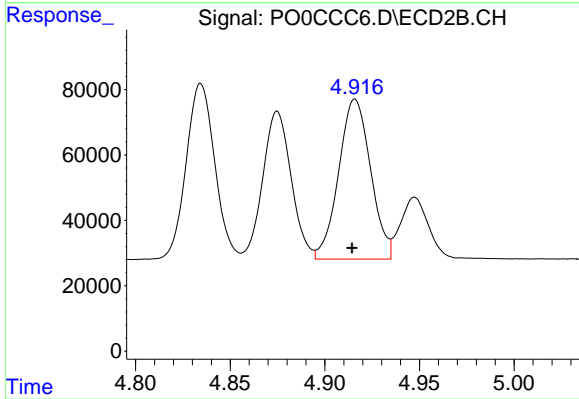
#13 AR-1232-3

R.T.: 4.834 min
 Delta R.T.: 0.003 min
 Response: 563984
 Conc: 970.12 ng/ml



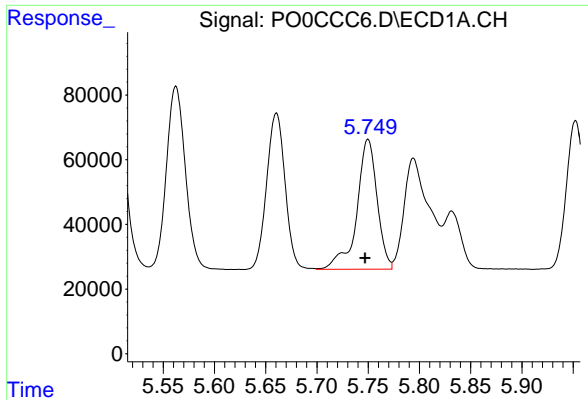
#14 AR-1232-4

R.T.: 5.661 min
 Delta R.T.: 0.004 min
 Response: 604643
 Conc: 849.84 ng/ml



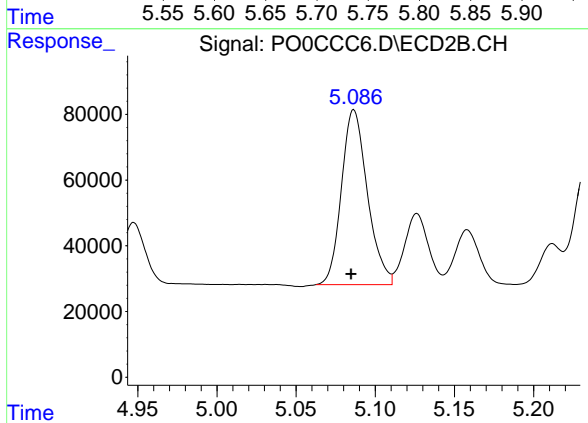
#14 AR-1232-4

R.T.: 4.916 min
 Delta R.T.: 0.002 min
 Response: 575063
 Conc: 1083.22 ng/ml

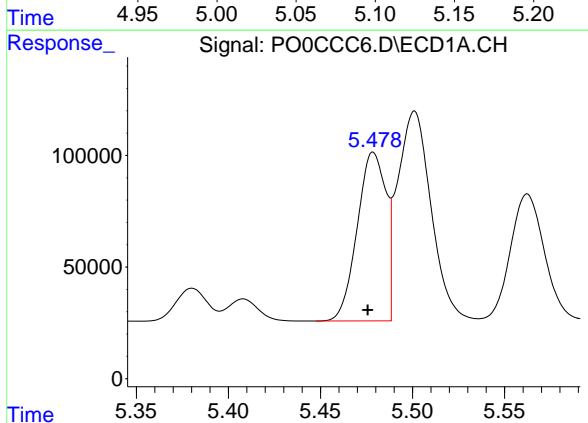


#15 AR-1232-5
 R.T.: 5.750 min
 Delta R.T.: 0.003 min
 Response: 555139
 Conc: 985.66 ng/ml

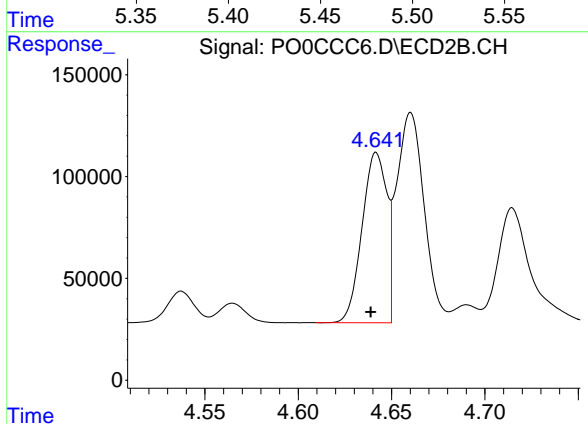
Instrument :
 ECD_O
 ClientSampleId :



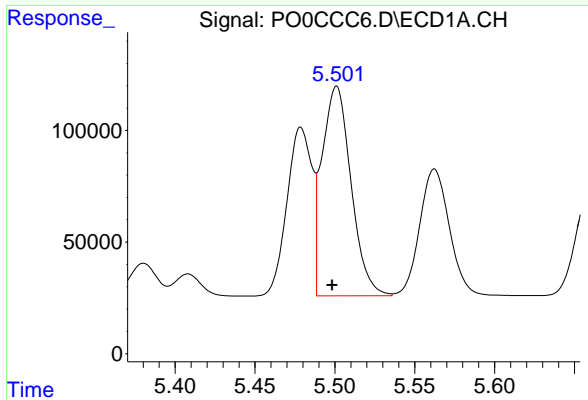
#15 AR-1232-5
 R.T.: 5.087 min
 Delta R.T.: 0.002 min
 Response: 606716
 Conc: 1036.20 ng/ml



#16 AR-1242-1
 R.T.: 5.479 min
 Delta R.T.: 0.003 min
 Response: 822069
 Conc: 863.34 ng/ml



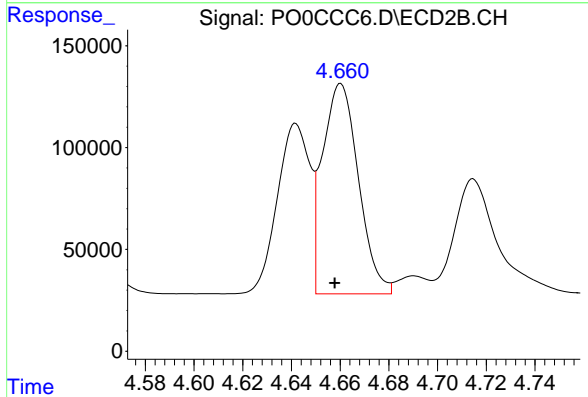
#16 AR-1242-1
 R.T.: 4.642 min
 Delta R.T.: 0.003 min
 Response: 772758
 Conc: 1009.19 ng/ml



#17 AR-1242-2

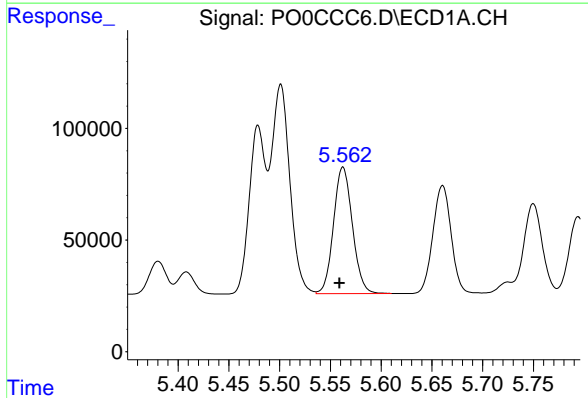
R.T.: 5.501 min
 Delta R.T.: 0.003 min
 Response: 1188293
 Conc: 879.83 ng/ml

Instrument :
 ECD_O
 ClientSampleId :



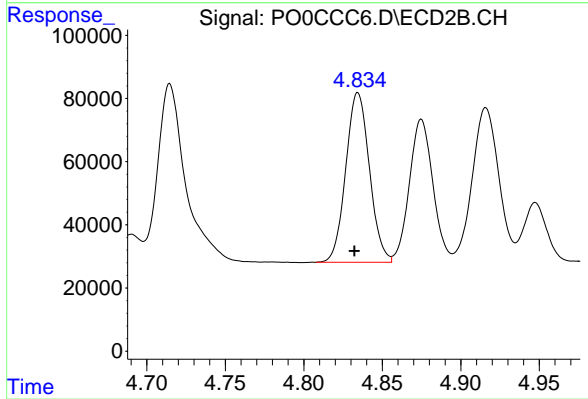
#17 AR-1242-2

R.T.: 4.660 min
 Delta R.T.: 0.003 min
 Response: 1059025
 Conc: 1025.02 ng/ml



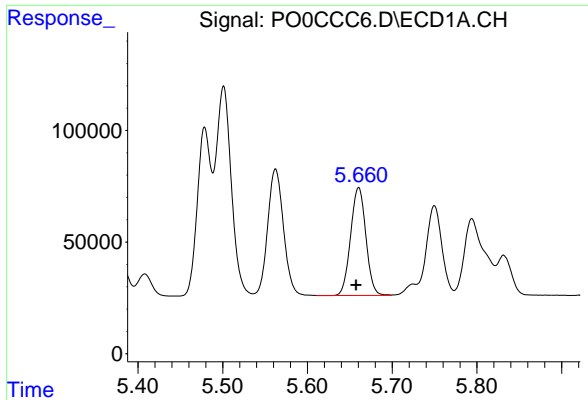
#18 AR-1242-3

R.T.: 5.562 min
 Delta R.T.: 0.003 min
 Response: 733873
 Conc: 855.21 ng/ml



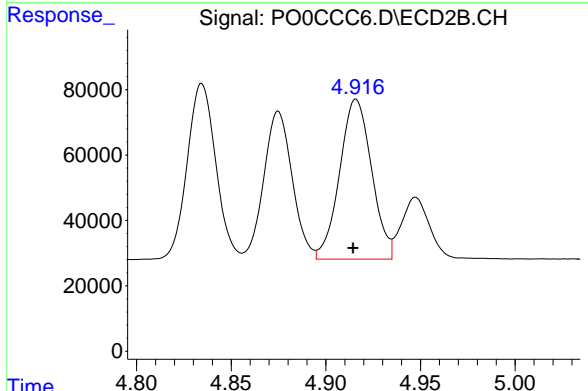
#18 AR-1242-3

R.T.: 4.834 min
 Delta R.T.: 0.002 min
 Response: 563984
 Conc: 1006.36 ng/ml

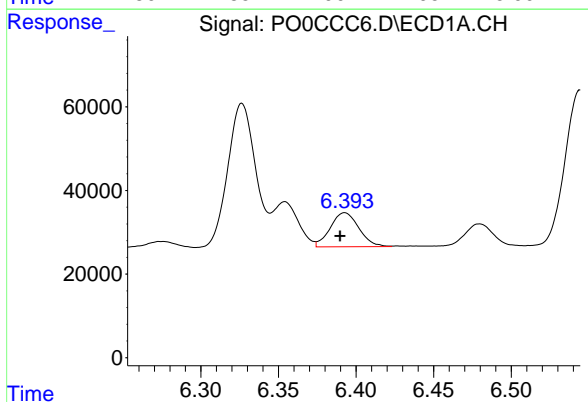


#19 AR-1242-4
 R.T.: 5.661 min
 Delta R.T.: 0.003 min
 Response: 604643
 Conc: 864.75 ng/ml

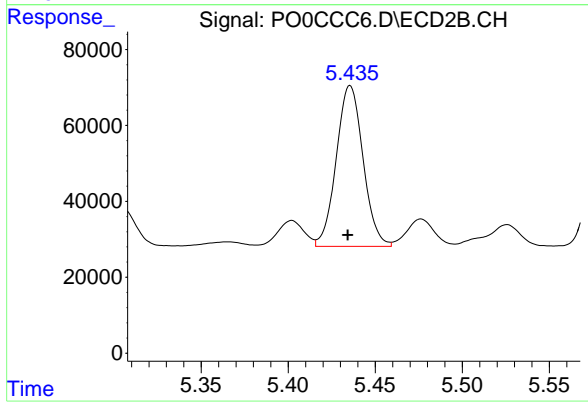
Instrument :
 ECD_O
 ClientSampled :



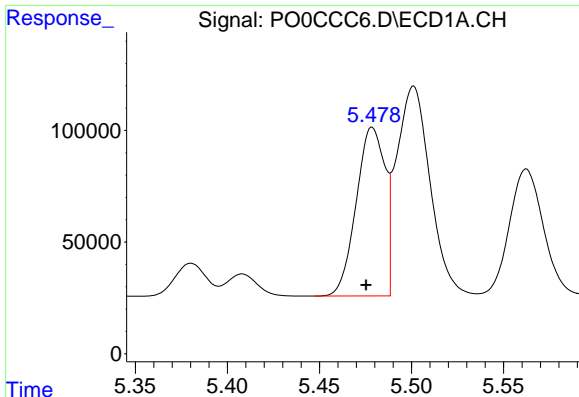
#19 AR-1242-4
 R.T.: 4.916 min
 Delta R.T.: 0.002 min
 Response: 575063
 Conc: 1013.91 ng/ml



#20 AR-1242-5
 R.T.: 6.393 min
 Delta R.T.: 0.003 min
 Response: 104467
 Conc: 123.66 ng/ml



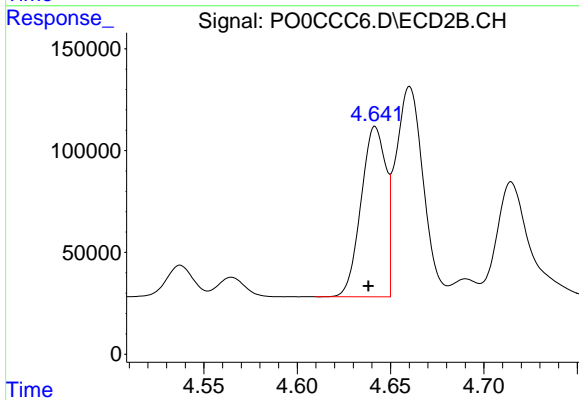
#20 AR-1242-5
 R.T.: 5.436 min
 Delta R.T.: 0.001 min
 Response: 453506
 Conc: 577.86 ng/ml



#21 AR-1248-1

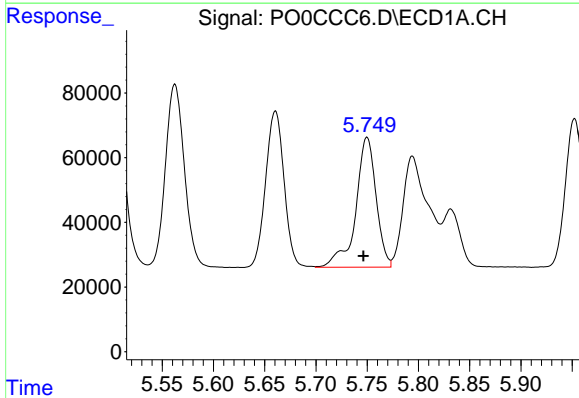
R.T.: 5.479 min
 Delta R.T.: 0.003 min
 Response: 822069
 Conc: 1465.61 ng/ml

Instrument :
 ECD_O
 ClientSampled :



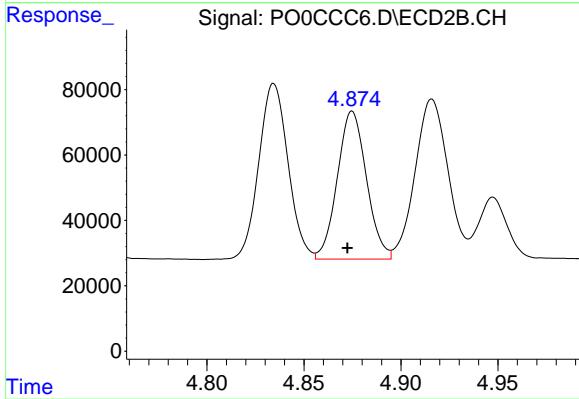
#21 AR-1248-1

R.T.: 4.642 min
 Delta R.T.: 0.004 min
 Response: 772758
 Conc: 1720.91 ng/ml



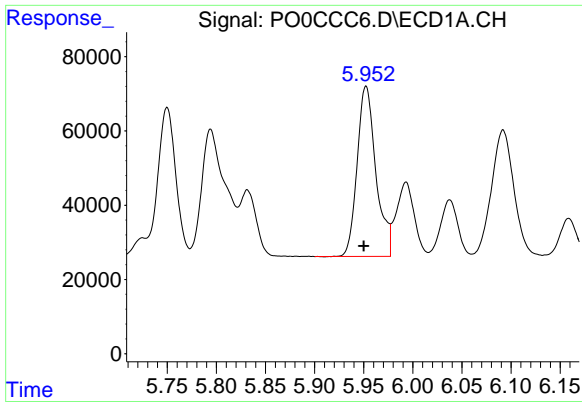
#22 AR-1248-2

R.T.: 5.750 min
 Delta R.T.: 0.003 min
 Response: 555139
 Conc: 669.89 ng/ml



#22 AR-1248-2

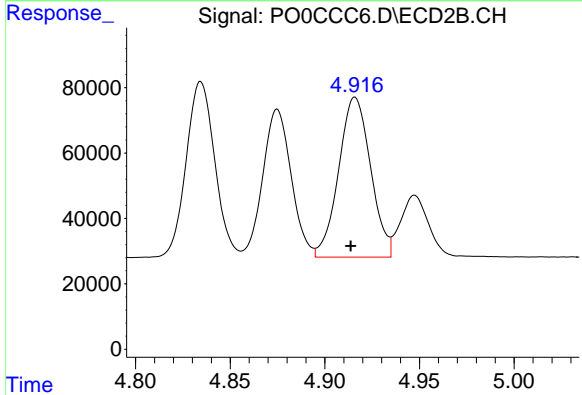
R.T.: 4.875 min
 Delta R.T.: 0.003 min
 Response: 473070
 Conc: 752.35 ng/ml



#23 AR-1248-3

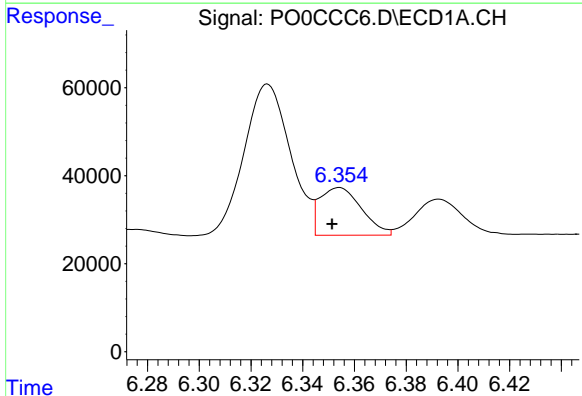
R.T.: 5.952 min
 Delta R.T.: 0.002 min
 Response: 610068
 Conc: 663.21 ng/ml

Instrument :
 ECD_O
 ClientSampled :



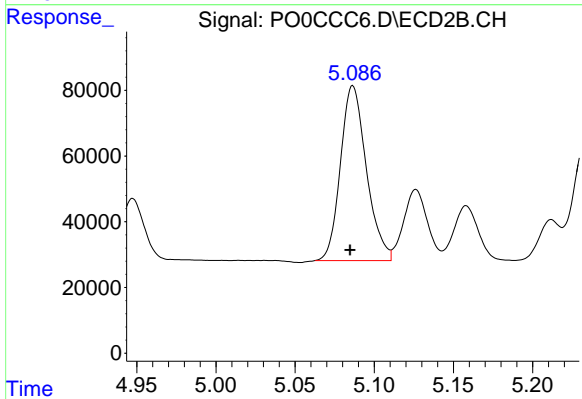
#23 AR-1248-3

R.T.: 4.916 min
 Delta R.T.: 0.002 min
 Response: 575063
 Conc: 891.26 ng/ml



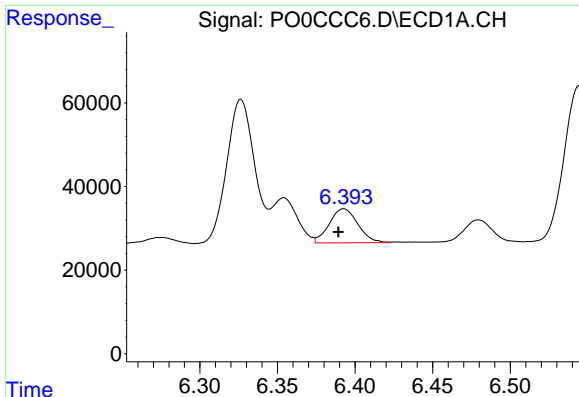
#24 AR-1248-4

R.T.: 6.354 min
 Delta R.T.: 0.003 min
 Response: 121412
 Conc: 109.54 ng/ml



#24 AR-1248-4

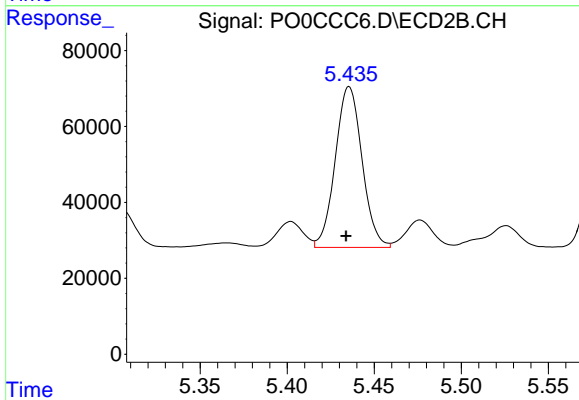
R.T.: 5.087 min
 Delta R.T.: 0.002 min
 Response: 606716
 Conc: 769.69 ng/ml



#25 AR-1248-5

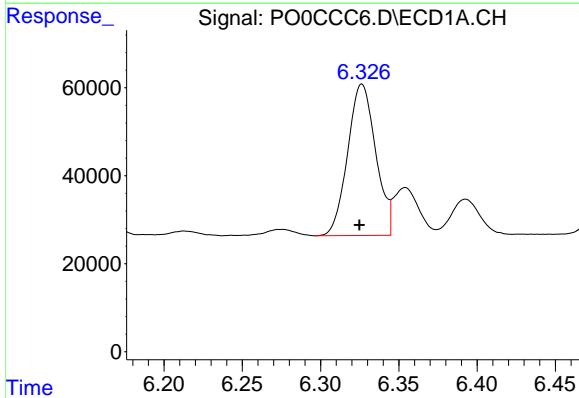
R.T.: 6.393 min
 Delta R.T.: 0.003 min
 Response: 104467
 Conc: 97.36 ng/ml

Instrument :
 ECD_O
 ClientSampleId :



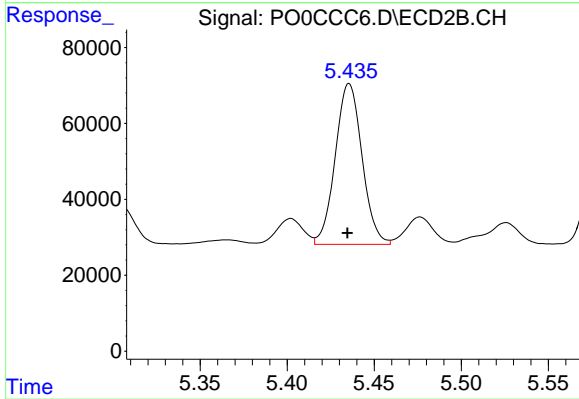
#25 AR-1248-5

R.T.: 5.436 min
 Delta R.T.: 0.002 min
 Response: 453506
 Conc: 374.31 ng/ml



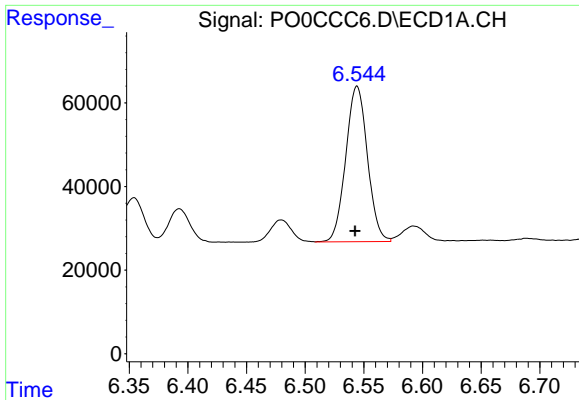
#26 AR-1254-1

R.T.: 6.326 min
 Delta R.T.: 0.002 min
 Response: 428942
 Conc: 262.81 ng/ml



#26 AR-1254-1

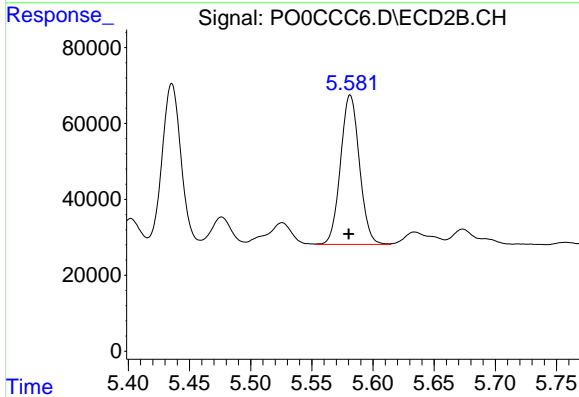
R.T.: 5.436 min
 Delta R.T.: 0.000 min
 Response: 453506
 Conc: 230.75 ng/ml



#27 AR-1254-2

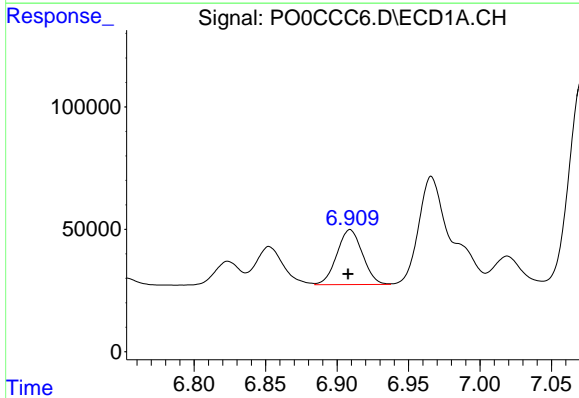
R.T.: 6.544 min
 Delta R.T.: 0.002 min
 Response: 478679
 Conc: 183.62 ng/ml

Instrument :
 ECD_O
 ClientSampled :



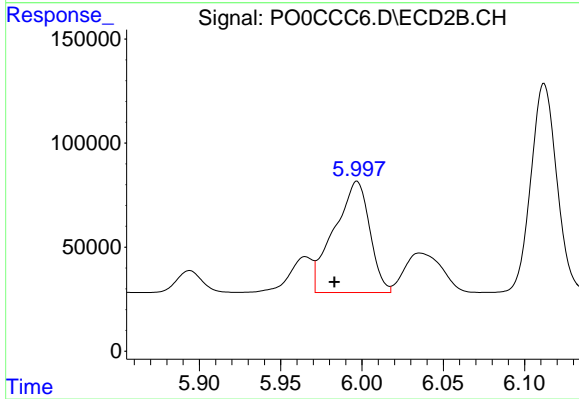
#27 AR-1254-2

R.T.: 5.581 min
 Delta R.T.: 0.001 min
 Response: 423420
 Conc: 236.43 ng/ml



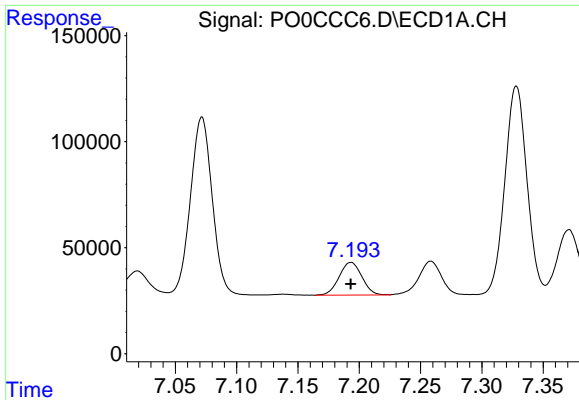
#28 AR-1254-3

R.T.: 6.909 min
 Delta R.T.: 0.001 min
 Response: 279133
 Conc: 96.71 ng/ml



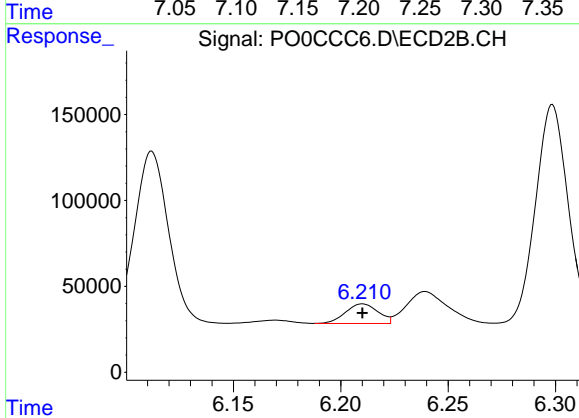
#28 AR-1254-3

R.T.: 5.997 min
 Delta R.T.: 0.014 min
 Response: 811569
 Conc: 262.23 ng/ml

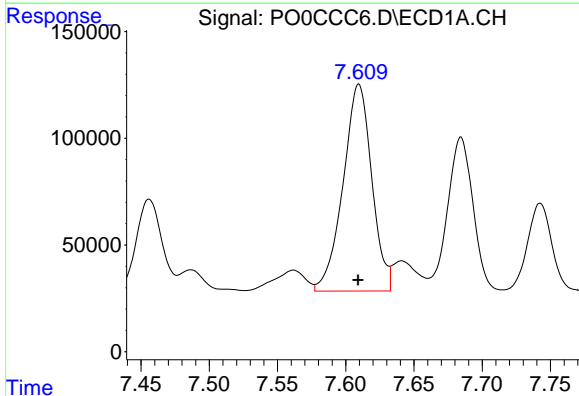


#29 AR-1254-4
R.T.: 7.193 min
Delta R.T.: 0.000 min
Response: 198718
Conc: 86.77 ng/ml

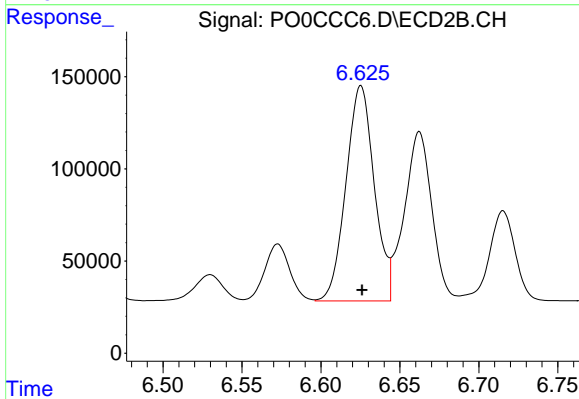
Instrument :
ECD_O
ClientSampled :



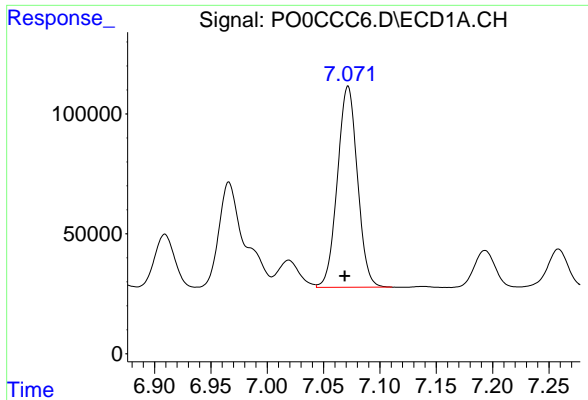
#29 AR-1254-4
R.T.: 6.210 min
Delta R.T.: 0.000 min
Response: 120235
Conc: 58.27 ng/ml



#30 AR-1254-5
R.T.: 7.610 min
Delta R.T.: 0.000 min
Response: 1417790
Conc: 554.85 ng/ml

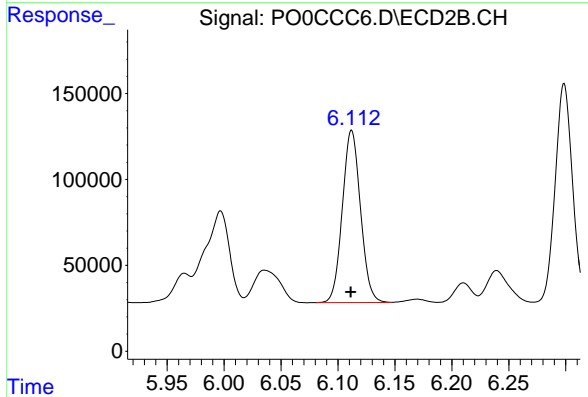


#30 AR-1254-5
R.T.: 6.625 min
Delta R.T.: 0.000 min
Response: 1458029
Conc: 483.40 ng/ml

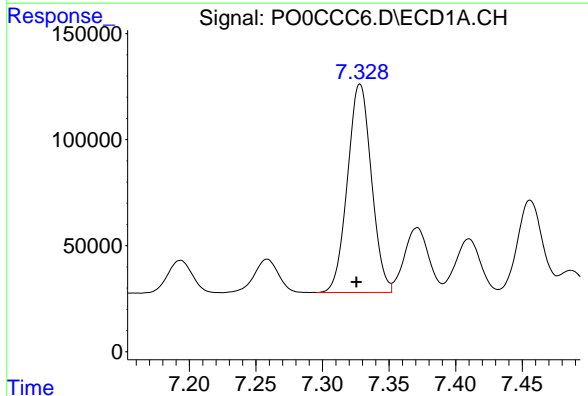


#31 AR-1260-1
 R.T.: 7.072 min
 Delta R.T.: 0.003 min
 Response: 1037955
 Conc: 550.01 ng/ml

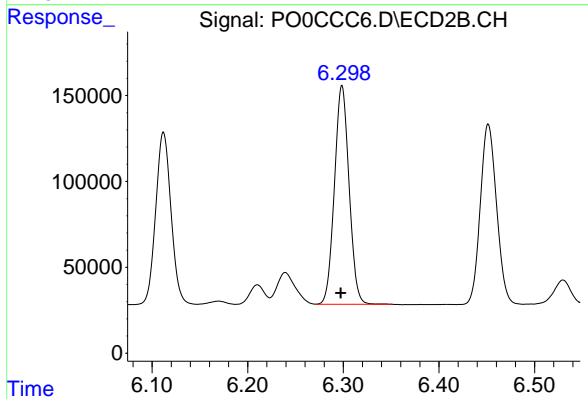
Instrument :
 ECD_O
 ClientSampled :



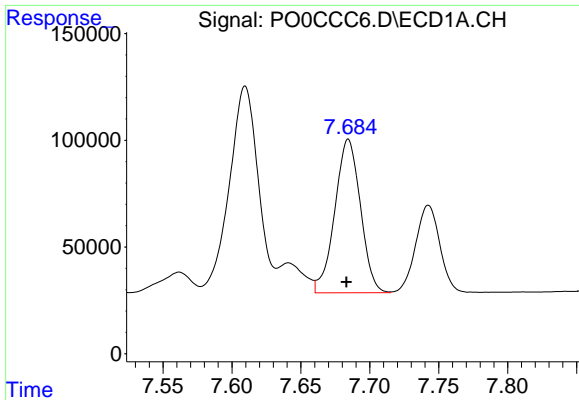
#31 AR-1260-1
 R.T.: 6.112 min
 Delta R.T.: 0.000 min
 Response: 1112465
 Conc: 633.81 ng/ml



#32 AR-1260-2
 R.T.: 7.328 min
 Delta R.T.: 0.003 min
 Response: 1231630
 Conc: 526.63 ng/ml

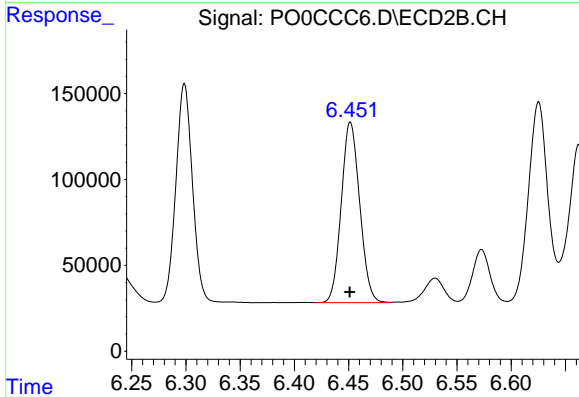


#32 AR-1260-2
 R.T.: 6.299 min
 Delta R.T.: 0.001 min
 Response: 1349556
 Conc: 606.60 ng/ml

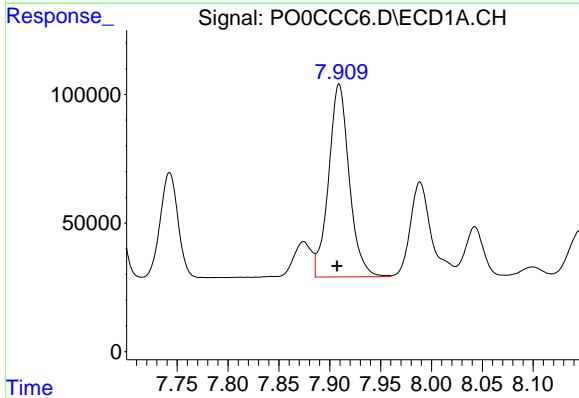


#33 AR-1260-3
 R.T.: 7.684 min
 Delta R.T.: 0.001 min
 Response: 931462
 Conc: 503.14 ng/ml

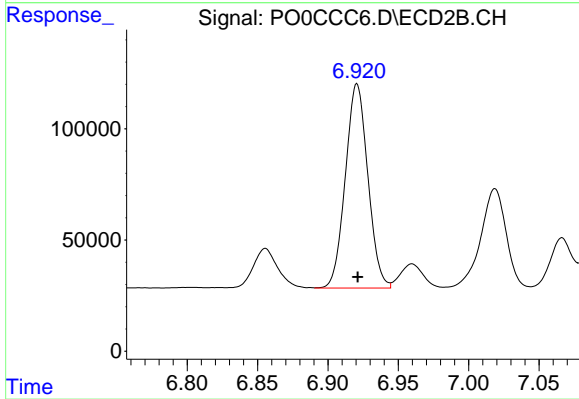
Instrument :
 ECD_O
 ClientSampled :



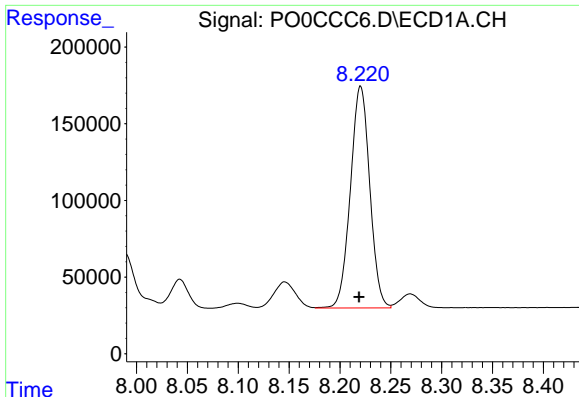
#33 AR-1260-3
 R.T.: 6.452 min
 Delta R.T.: 0.000 min
 Response: 1241561
 Conc: 610.64 ng/ml



#34 AR-1260-4
 R.T.: 7.909 min
 Delta R.T.: 0.002 min
 Response: 1056873
 Conc: 482.24 ng/ml



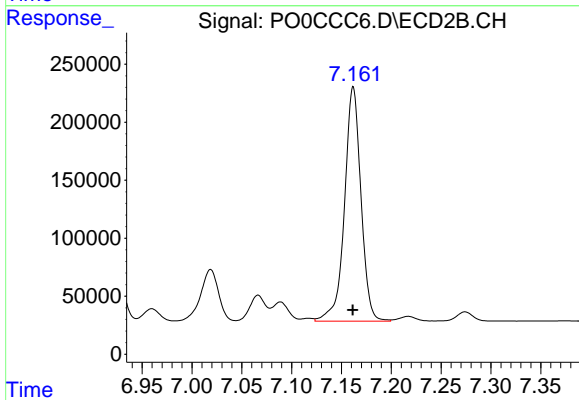
#34 AR-1260-4
 R.T.: 6.921 min
 Delta R.T.: 0.000 min
 Response: 1022623
 Conc: 551.35 ng/ml



#35 AR-1260-5

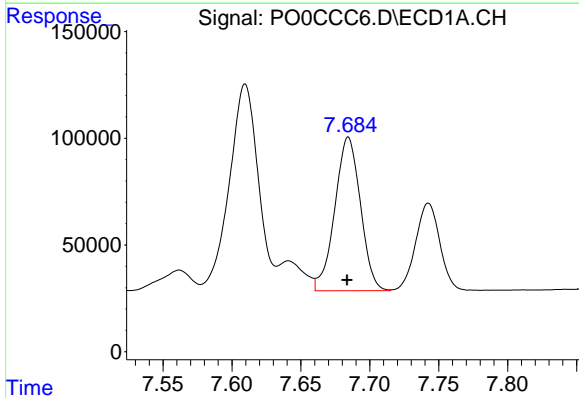
R.T.: 8.220 min
 Delta R.T.: 0.002 min
 Response: 1914789
 Conc: 433.70 ng/ml

Instrument :
 ECD_O
 ClientSampleId :



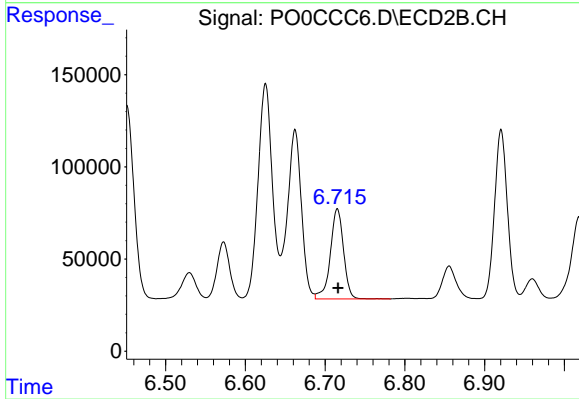
#35 AR-1260-5

R.T.: 7.162 min
 Delta R.T.: 0.000 min
 Response: 2325652
 Conc: 480.37 ng/ml



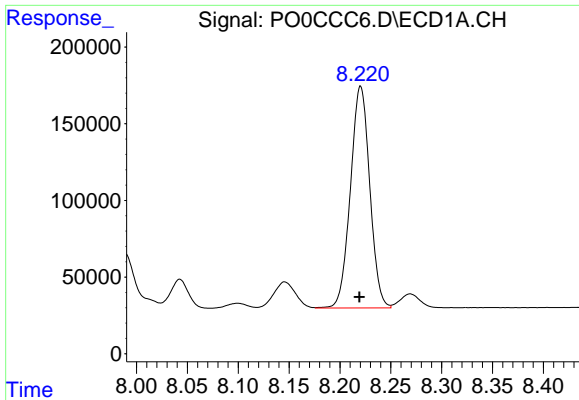
#36 AR-1262-1

R.T.: 7.684 min
 Delta R.T.: 0.000 min
 Response: 931462
 Conc: 311.98 ng/ml



#36 AR-1262-1

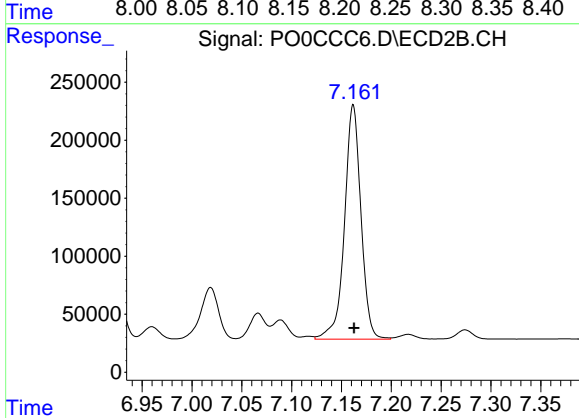
R.T.: 6.715 min
 Delta R.T.: 0.000 min
 Response: 563051
 Conc: 448.10 ng/ml



#37 AR-1262-2

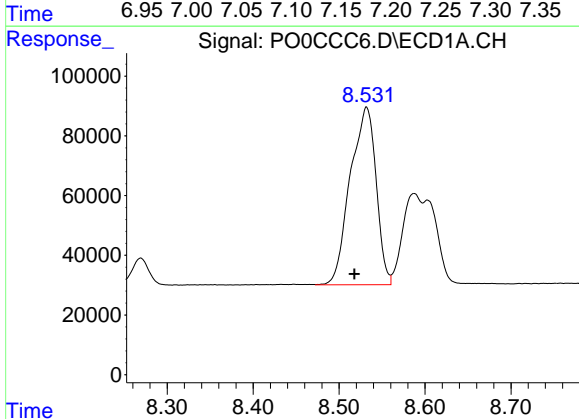
R.T.: 8.220 min
 Delta R.T.: 0.001 min
 Response: 1914789
 Conc: 347.28 ng/ml

Instrument :
 ECD_O
 ClientSampleId :



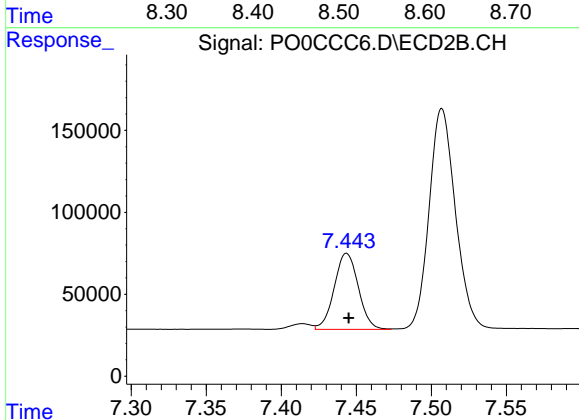
#37 AR-1262-2

R.T.: 7.162 min
 Delta R.T.: 0.000 min
 Response: 2325652
 Conc: 389.86 ng/ml



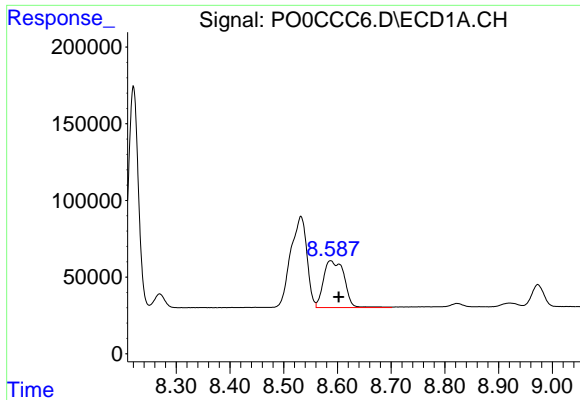
#38 AR-1262-3

R.T.: 8.532 min
 Delta R.T.: 0.014 min
 Response: 1246463
 Conc: 322.15 ng/ml



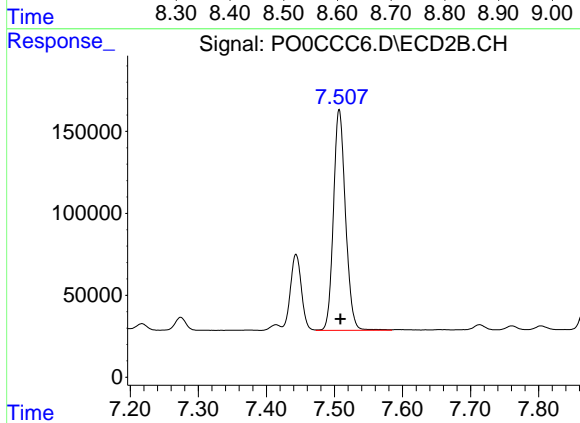
#38 AR-1262-3

R.T.: 7.444 min
 Delta R.T.: -0.001 min
 Response: 519008
 Conc: 222.63 ng/ml

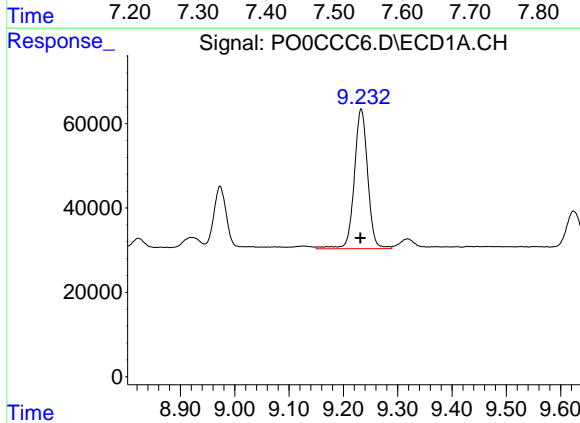


#39 AR-1262-4
 R.T.: 8.587 min
 Delta R.T.: -0.015 min
 Response: 815966
 Conc: 279.13 ng/ml

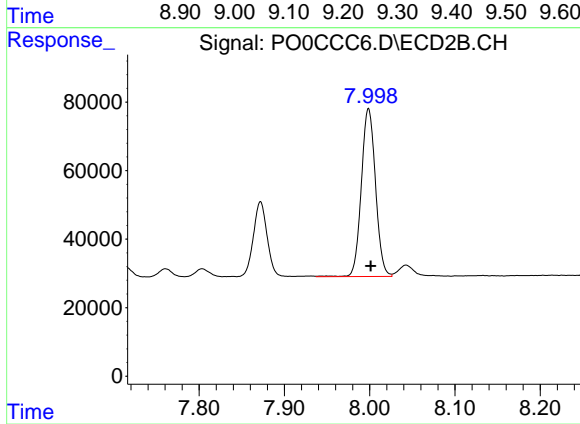
Instrument :
 ECD_O
 ClientSampled :



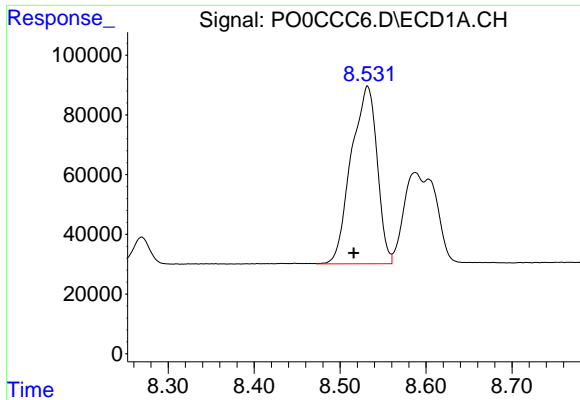
#39 AR-1262-4
 R.T.: 7.507 min
 Delta R.T.: -0.002 min
 Response: 1654947
 Conc: 371.64 ng/ml



#40 AR-1262-5
 R.T.: 9.233 min
 Delta R.T.: 0.002 min
 Response: 569359
 Conc: 271.27 ng/ml



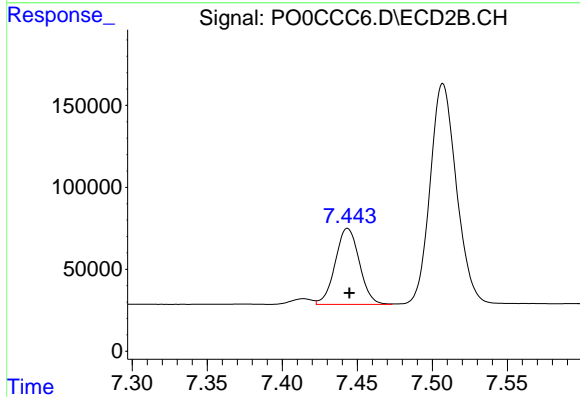
#40 AR-1262-5
 R.T.: 7.999 min
 Delta R.T.: -0.003 min
 Response: 566176
 Conc: 268.07 ng/ml



#41 AR-1268-1

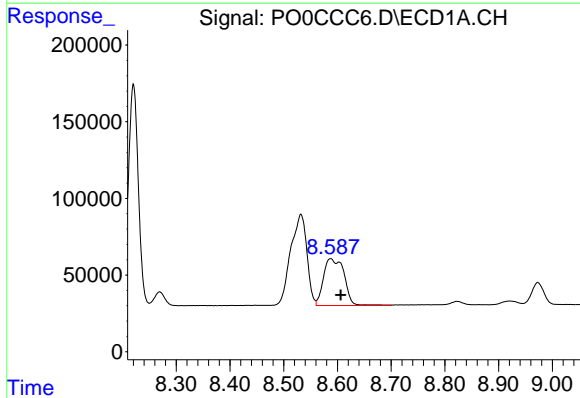
R.T.: 8.532 min
 Delta R.T.: 0.016 min
 Response: 1246463
 Conc: 191.18 ng/ml

Instrument :
 ECD_O
 ClientSampleId :



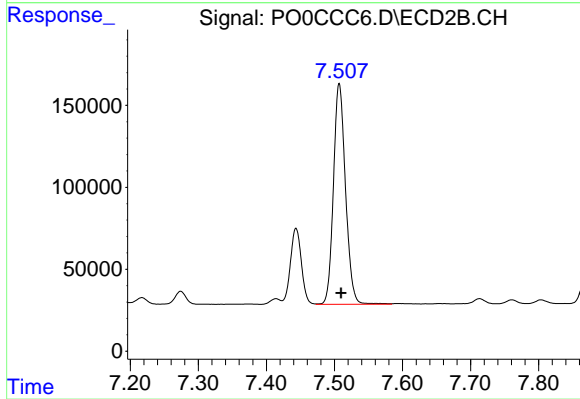
#41 AR-1268-1

R.T.: 7.444 min
 Delta R.T.: -0.001 min
 Response: 519008
 Conc: 74.34 ng/ml



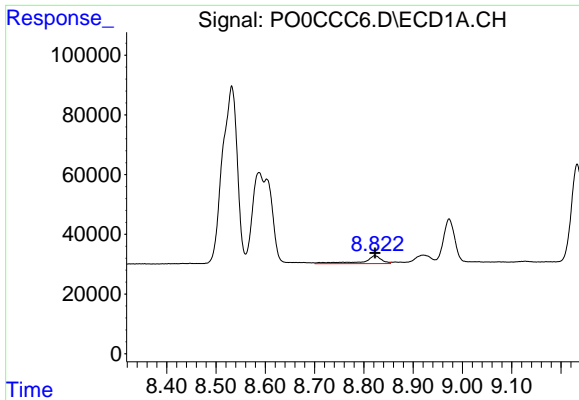
#42 AR-1268-2

R.T.: 8.587 min
 Delta R.T.: -0.019 min
 Response: 815966
 Conc: 135.06 ng/ml



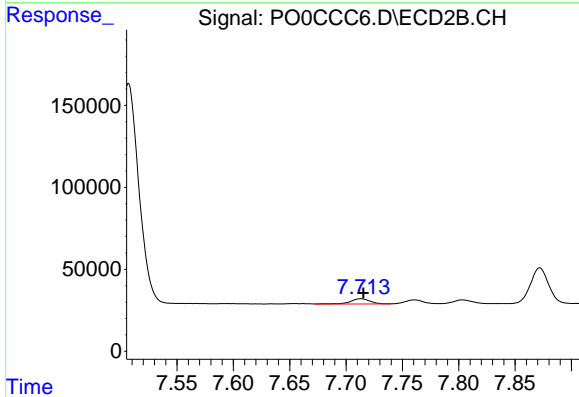
#42 AR-1268-2

R.T.: 7.507 min
 Delta R.T.: -0.002 min
 Response: 1654947
 Conc: 258.48 ng/ml

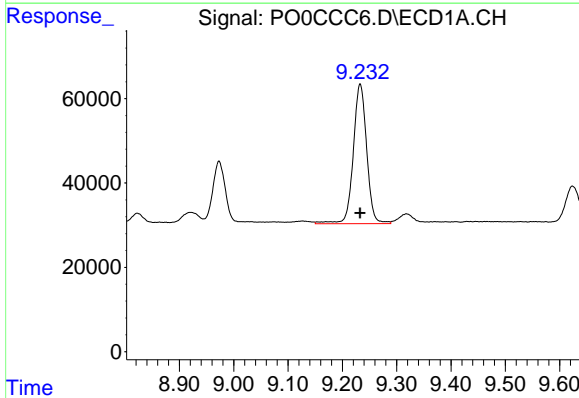


#43 AR-1268-3
 R.T.: 8.823 min
 Delta R.T.: 0.000 min
 Response: 68238
 Conc: 13.74 ng/ml

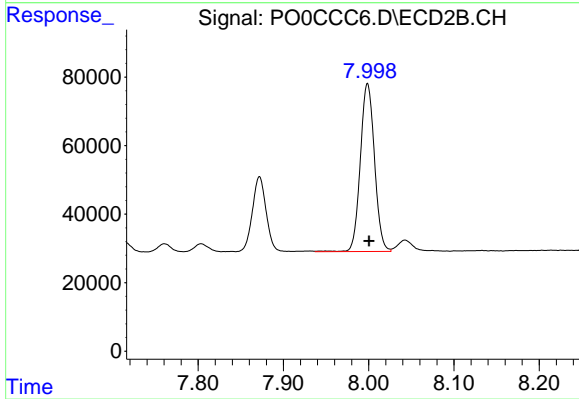
Instrument :
 ECD_O
 ClientSampled :



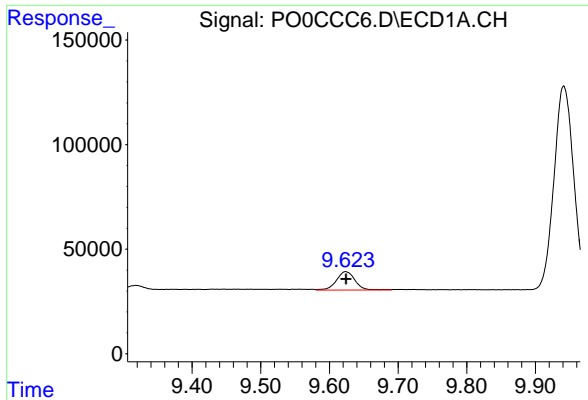
#43 AR-1268-3
 R.T.: 7.713 min
 Delta R.T.: -0.002 min
 Response: 38899
 Conc: 7.43 ng/ml



#44 AR-1268-4
 R.T.: 9.233 min
 Delta R.T.: 0.000 min
 Response: 569359
 Conc: 243.35 ng/ml



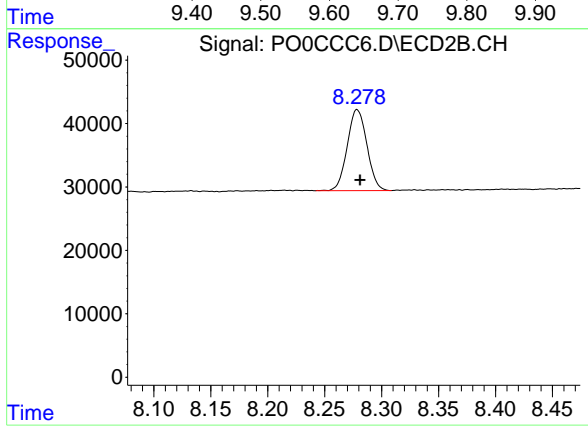
#44 AR-1268-4
 R.T.: 7.999 min
 Delta R.T.: -0.002 min
 Response: 566176
 Conc: 242.35 ng/ml



#45 AR-1268-5

R.T.: 9.624 min
Delta R.T.: 0.000 min
Response: 165453
Conc: 10.77 ng/ml

Instrument :
ECD_O
ClientSampleId :



#45 AR-1268-5

R.T.: 8.279 min
Delta R.T.: -0.003 min
Response: 153720
Conc: 9.31 ng/ml