

Data Path : Z:\pestpcbsrv\HPCHEM1\ECD_0\Data\PO120522\
 Data File : PO091032.D
 Signal(s) : Signal #1: ECD1A.ch Signal #2: ECD2B.ch
 Acq On : 05 Dec 2022 14:31
 Operator : YP/AJ
 Sample : N5863-02
 Misc :
 ALS Vial : 16 Sample Multiplier: 1

Instrument :
 ECD_0
ClientSampleId :
 WOOD-CHIP-PILE

Manual Integrations
APPROVED

Reviewed By :Yogesh Patel 12/06/2022
 Supervised By :Ankita Jodhani 12/06/2022

Integration File signal 1: autoint1.e
 Integration File signal 2: autoint2.e
 Quant Time: Dec 06 01:12:41 2022
 Quant Method : Z:\pestpcbsrv\HPCHEM1\ECD_0\methods\PO112522.M
 Quant Title : GC EXTRACTABLES
 QLast Update : Mon Nov 28 11:25:59 2022
 Response via : Initial Calibration
 Integrator: ChemStation

Volume Inj. : 2 µl
 Signal #1 Phase : ZB-MR1 Signal #2 Phase: ZB-MR2
 Signal #1 Info : 30Mx0.32mmx 0.50µ Signal #2 Info : 30M x 0.32mm x 0.25µm

Compound	RT#1	RT#2	Resp#1	Resp#2	ng/ml	ng/ml

System Monitoring Compounds						
1) SA Tetrachlo...	4.297	3.476	35095190	12540448	10.380	11.948
2) SA Decachlor...	10.043	8.479	10456104	4380753	3.936m	4.512
Target Compounds						
26) L6 AR-1254-1	6.335	5.366	2281667	733132	18.167	12.509 #
27) L6 AR-1254-2	6.556	5.515	2120367	660617	11.245	12.378
28) L6 AR-1254-3	6.923	5.918	2541019	1449581	13.557	17.792 #
29) L6 AR-1254-4	7.209	6.149	1563650	350833	11.319m	7.170 #
30) L6 AR-1254-5	7.631	6.567	2204680	1241882	14.369	16.660

(f)=RT Delta > 1/2 Window (#)=Amounts differ by > 25% (m)=manual int.

Data Path : Z:\pestpcbsrv\HPCHEM1\ECD_0\Data\PO120522\
 Data File : PO091032.D
 Signal(s) : Signal #1: ECD1A.ch Signal #2: ECD2B.ch
 Acq On : 05 Dec 2022 14:31
 Operator : YP/AJ
 Sample : N5863-02
 Misc :
 ALS Vial : 16 Sample Multiplier: 1

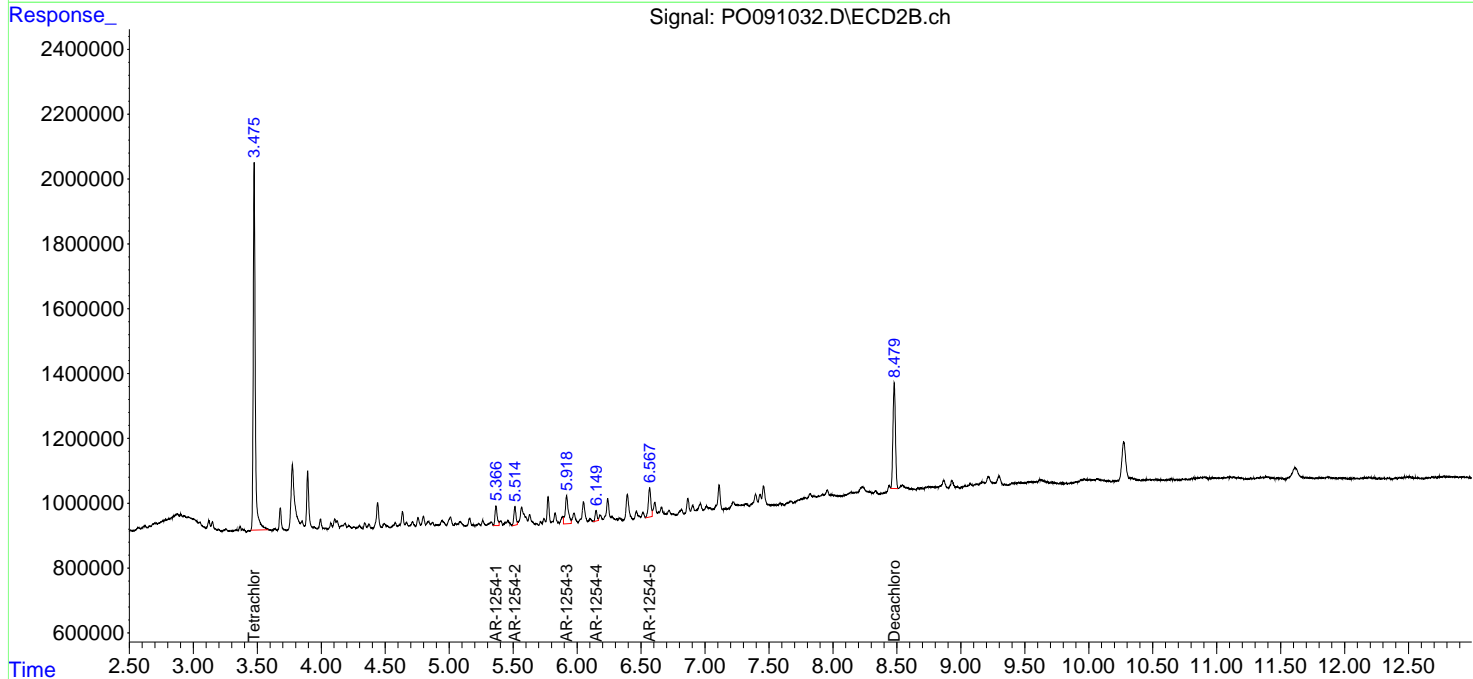
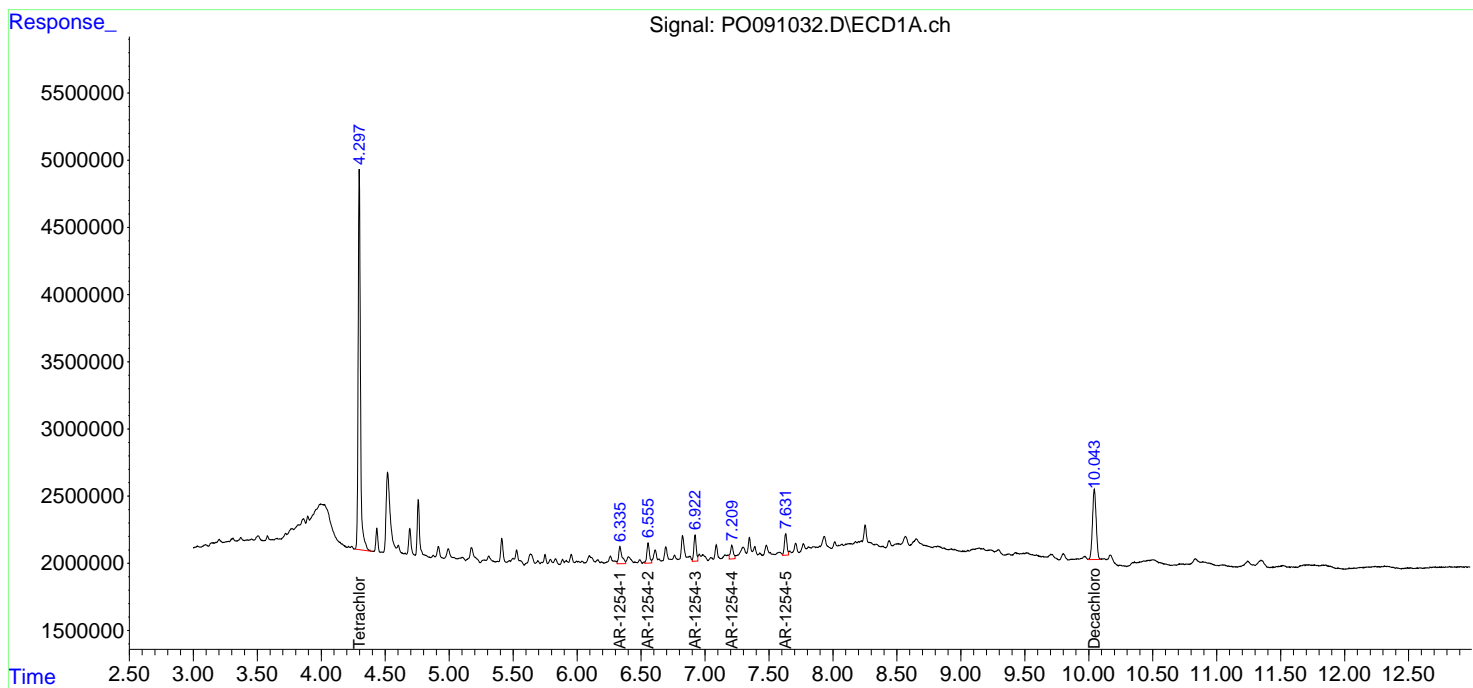
Instrument :
 ECD_0
ClientSampleId :
 WOOD-CHIP-PILE

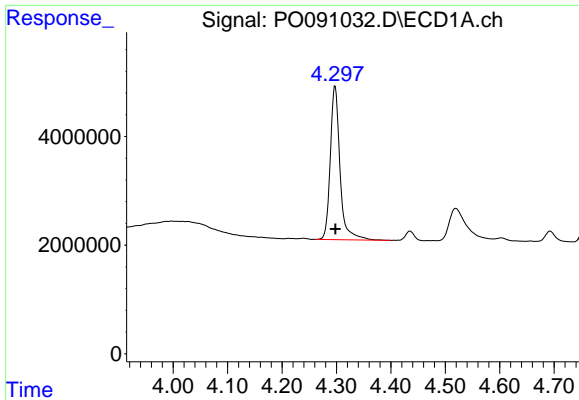
Manual Integrations
APPROVED

Reviewed By :Yogesh Patel 12/06/2022
 Supervised By :Ankita Jodhani 12/06/2022

Integration File signal 1: autoint1.e
 Integration File signal 2: autoint2.e
 Quant Time: Dec 06 01:12:41 2022
 Quant Method : Z:\pestpcbsrv\HPCHEM1\ECD_0\methods\PO112522.M
 Quant Title : GC EXTRACTABLES
 QLast Update : Mon Nov 28 11:25:59 2022
 Response via : Initial Calibration
 Integrator: ChemStation

Volume Inj. : 2 µl
 Signal #1 Phase : ZB-MR1 Signal #2 Phase: ZB-MR2
 Signal #1 Info : 30Mx0.32mmx 0.50µm Signal #2 Info : 30M x 0.32mm x 0.25µm

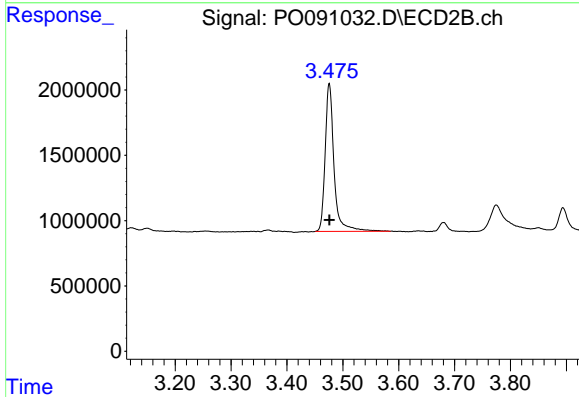




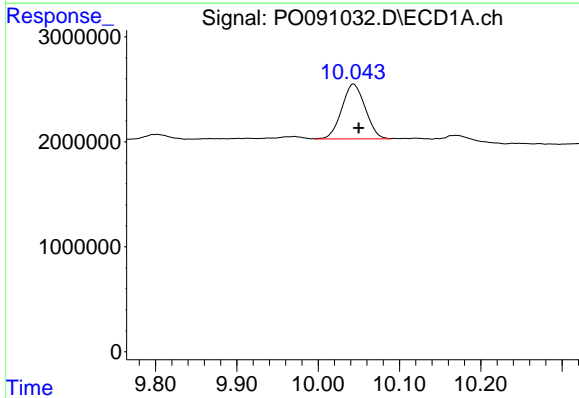
#1 Tetrachloro-m-xylene
 R.T.: 4.297 min
 Delta R.T.: 0.000 min
 Response: 35095190
 Conc: 10.38 ng/ml

Instrument :
 ECD_O
 ClientSampleId :
 WOOD-CHIP-PILE

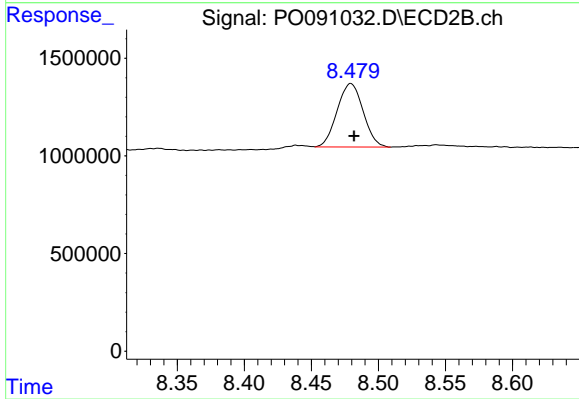
Manual Integrations
APPROVED
 Reviewed By :Yogesh Patel 12/06/2022
 Supervised By :Ankita Jodhani 12/06/2022



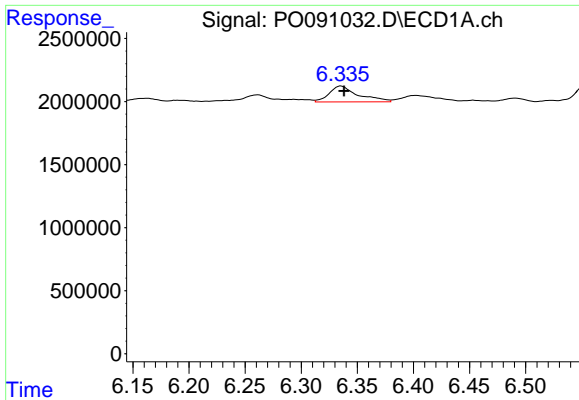
#1 Tetrachloro-m-xylene
 R.T.: 3.476 min
 Delta R.T.: 0.000 min
 Response: 12540448
 Conc: 11.95 ng/ml



#2 Decachlorobiphenyl
 R.T.: 10.043 min
 Delta R.T.: -0.007 min
 Response: 10456104
 Conc: 3.94 ng/ml m



#2 Decachlorobiphenyl
 R.T.: 8.479 min
 Delta R.T.: -0.002 min
 Response: 4380753
 Conc: 4.51 ng/ml

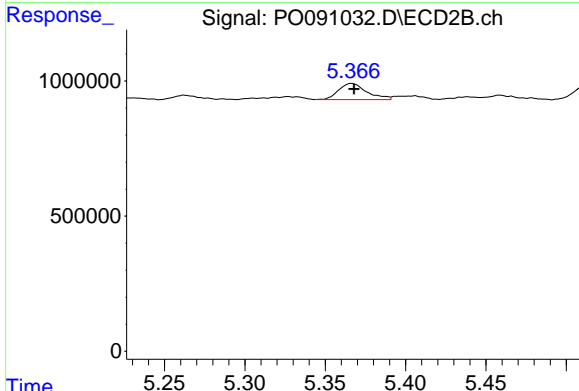


#26 AR-1254-1

R.T.: 6.335 min
 Delta R.T.: -0.003 min
 Response: 2281667
 Conc: 18.17 ng/ml

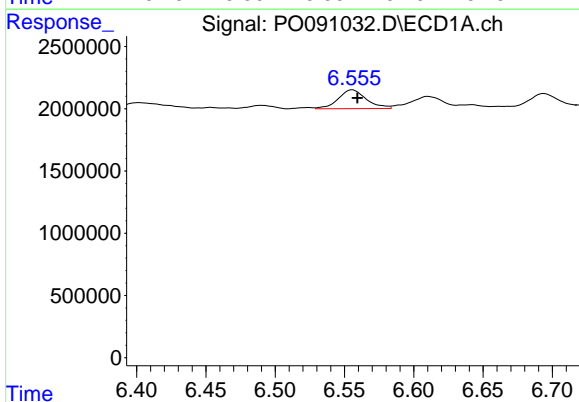
Instrument : ECD_O
 ClientSampleId : WOOD-CHIP-PILE

Manual Integrations
APPROVED
 Reviewed By :Yogesh Patel 12/06/2022
 Supervised By :Ankita Jodhani 12/06/2022



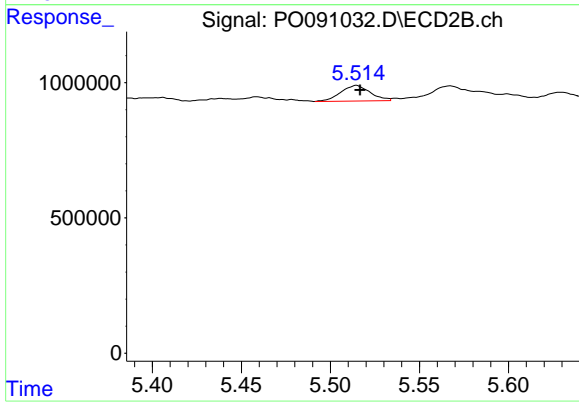
#26 AR-1254-1

R.T.: 5.366 min
 Delta R.T.: -0.002 min
 Response: 733132
 Conc: 12.51 ng/ml



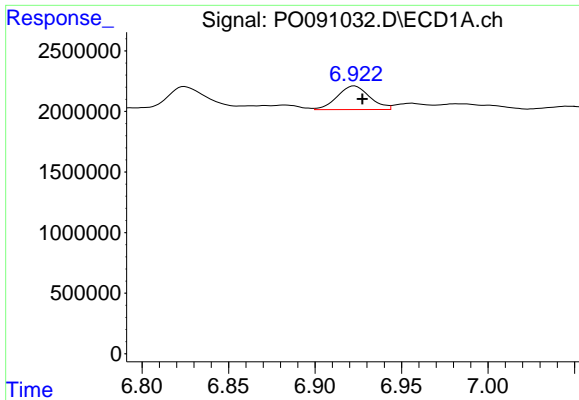
#27 AR-1254-2

R.T.: 6.556 min
 Delta R.T.: -0.004 min
 Response: 2120367
 Conc: 11.25 ng/ml



#27 AR-1254-2

R.T.: 5.515 min
 Delta R.T.: -0.002 min
 Response: 660617
 Conc: 12.38 ng/ml



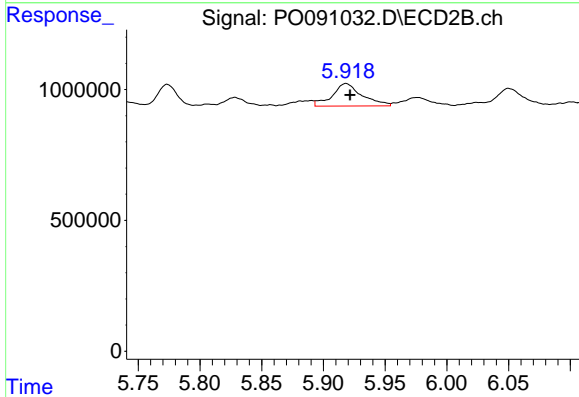
#28 AR-1254-3

R.T.: 6.923 min
 Delta R.T.: -0.005 min
 Response: 2541019
 Conc: 13.56 ng/ml

Instrument :
 ECD_O
 ClientSampleId :
 WOOD-CHIP-PILE

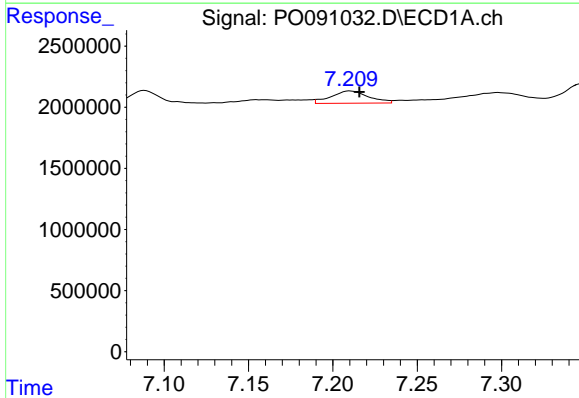
Manual Integrations
 APPROVED

Reviewed By :Yogesh Patel 12/06/2022
 Supervised By :Ankita Jodhani 12/06/2022



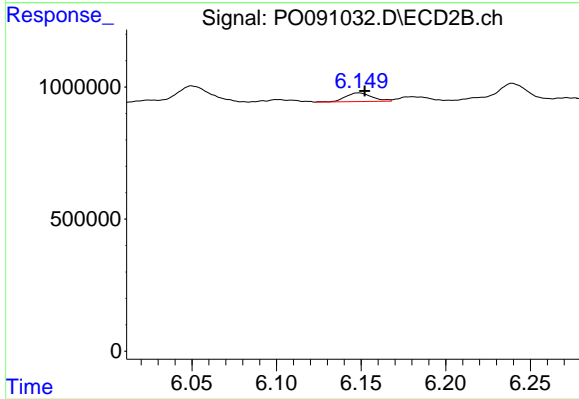
#28 AR-1254-3

R.T.: 5.918 min
 Delta R.T.: -0.003 min
 Response: 1449581
 Conc: 17.79 ng/ml



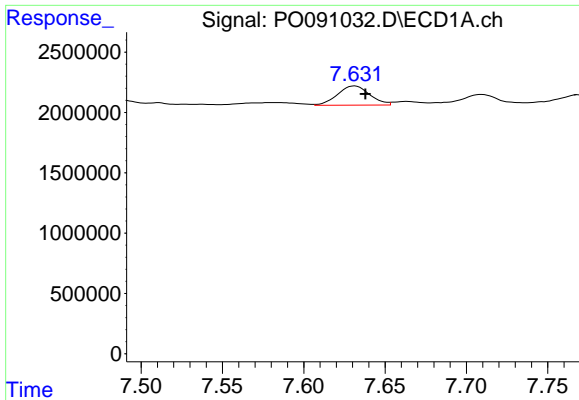
#29 AR-1254-4

R.T.: 7.209 min
 Delta R.T.: -0.006 min
 Response: 1563650
 Conc: 11.32 ng/ml m



#29 AR-1254-4

R.T.: 6.149 min
 Delta R.T.: -0.003 min
 Response: 350833
 Conc: 7.17 ng/ml



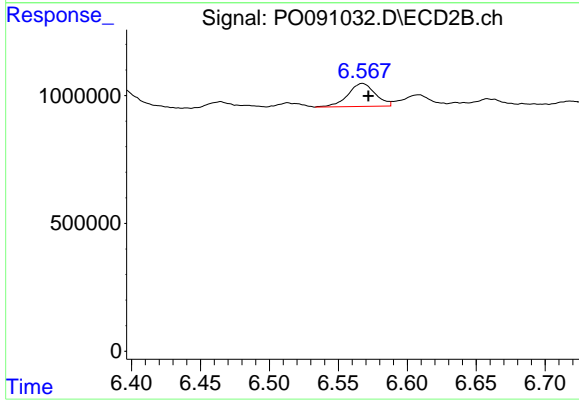
#30 AR-1254-5

R.T.: 7.631 min
 Delta R.T.: -0.006 min
 Response: 2204680
 Conc: 14.37 ng/ml

Instrument :
 ECD_O
 ClientSampleId :
 WOOD-CHIP-PILE

Manual Integrations
 APPROVED

Reviewed By :Yogesh Patel 12/06/2022
 Supervised By :Ankita Jodhani 12/06/2022



#30 AR-1254-5

R.T.: 6.567 min
 Delta R.T.: -0.004 min
 Response: 1241882
 Conc: 16.66 ng/ml