

Data Path : Z:\pestpcbsrv\HPCHEM1\ECD\_0\Data\PO120619\  
 Data File : PO064455.D  
 Signal(s) : Signal #1: ECD1A.CH Signal #2: ECD2B.CH  
 Acq On : 06 Dec 2019 23:39  
 Operator : SM/AJ  
 Sample : K6166-01 5X  
 Misc :  
 ALS Vial : 42 Sample Multiplier: 1

Instrument :  
 ECD\_0  
 ClientSampleId :  
 01-A-01-B-01-C

Integration File signal 1: autoint1.e  
 Integration File signal 2: autoint2.e  
 Quant Time: Dec 07 02:26:05 2019  
 Quant Method : Z:\pestpcbsrv\HPCHEM1\ECD\_0\methods\PO112719.M  
 Quant Title : GC EXTRACTABLES  
 QLast Update : Thu Nov 28 01:28:08 2019  
 Response via : Initial Calibration  
 Integrator: ChemStation 6890 Scale Mode: Small noise peaks clipped

Volume Inj. : 2 µl  
 Signal #1 Phase : ZB-MR1 Signal #2 Phase: ZB-MR2  
 Signal #1 Info : 30Mx0.32mmx 0.50µ Signal #2 Info : 30M x 0.32mm x 0.25µm

Compound	RT#1	RT#2	Resp#1	Resp#2	ng/ml	ng/ml
-----						
System Monitoring Compounds						
1) SA Tetrachlo...	4.313	3.561	137089	111656	4.629	4.694
2) SA Decachlor...	9.935	8.518	178140	170092	4.347	4.164

Target Compounds

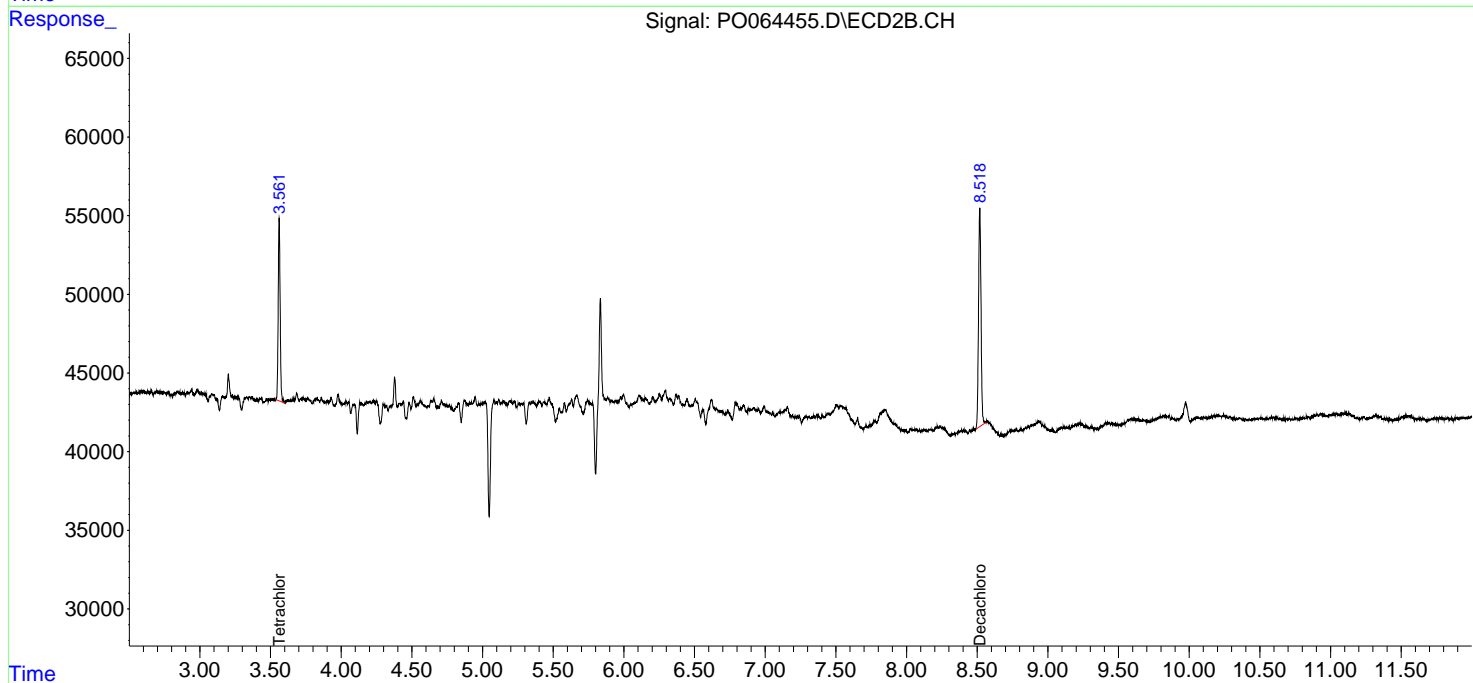
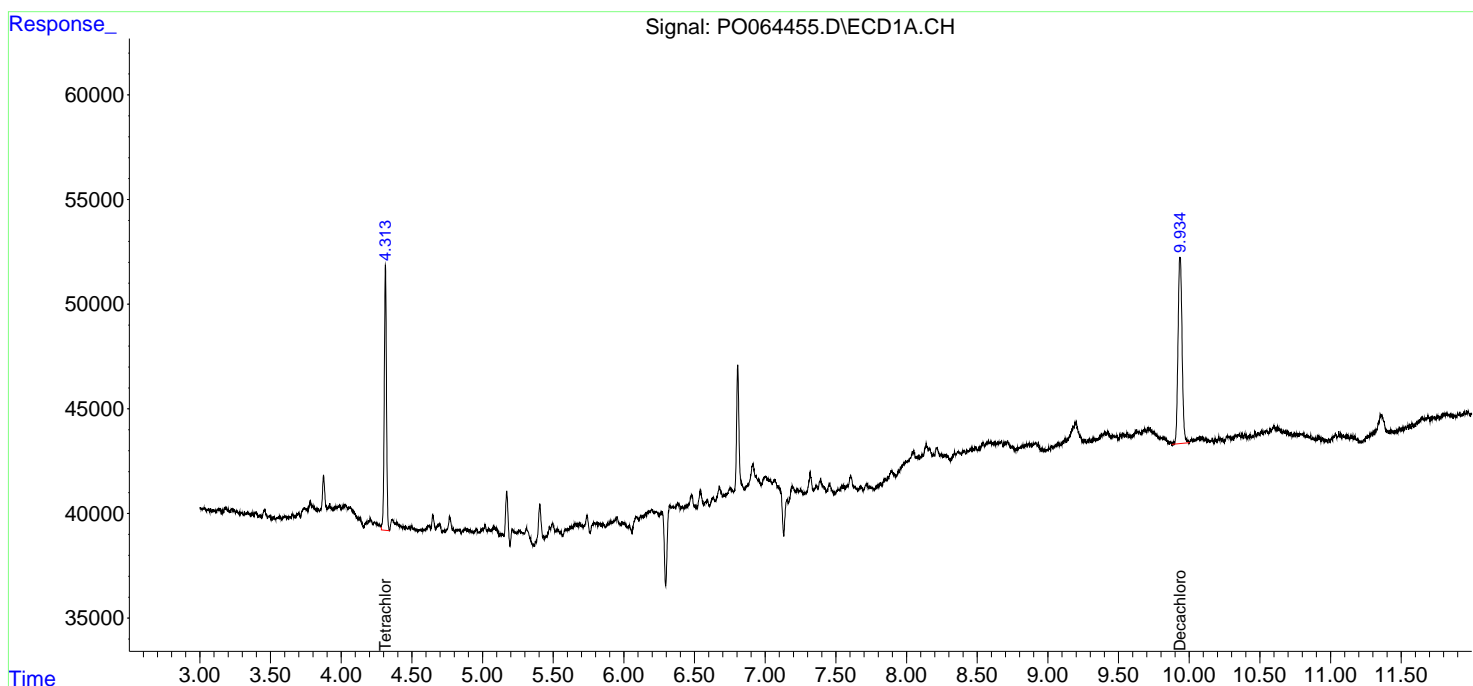
(f)=RT Delta > 1/2 Window (#)=Amounts differ by > 25% (m)=manual int.

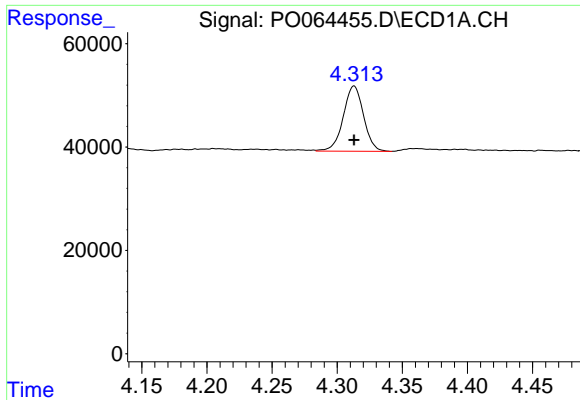
Data Path : Z:\pestpcbsrv\HPCHEM1\ECD\_O\Data\PO120619\  
 Data File : P0064455.D  
 Signal(s) : Signal #1: ECD1A.CH Signal #2: ECD2B.CH  
 Acq On : 06 Dec 2019 23:39  
 Operator : SM/AJ  
 Sample : K6166-01 5X  
 Misc :  
 ALS Vial : 42 Sample Multiplier: 1

Instrument :  
 ECD\_O  
 ClientSampleId :  
 01-A-01-B-01-C

Integration File signal 1: autoint1.e  
 Integration File signal 2: autoint2.e  
 Quant Time: Dec 07 02:26:05 2019  
 Quant Method : Z:\pestpcbsrv\HPCHEM1\ECD\_O\methods\PO112719.M  
 Quant Title : GC EXTRACTABLES  
 QLast Update : Thu Nov 28 01:28:08 2019  
 Response via : Initial Calibration  
 Integrator: ChemStation 6890 Scale Mode: Small noise peaks clipped

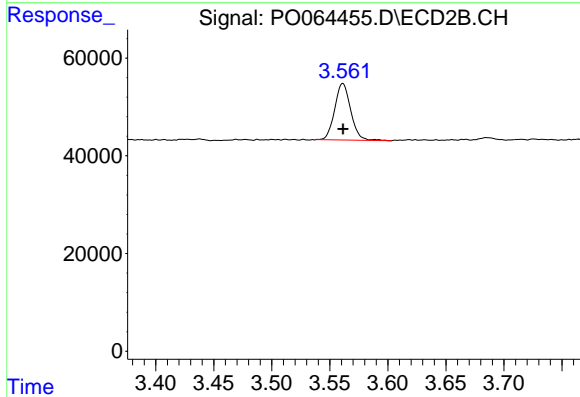
Volume Inj. : 2 µl  
 Signal #1 Phase : ZB-MR1 Signal #2 Phase: ZB-MR2  
 Signal #1 Info : 30Mx0.32mmx 0.50µm Signal #2 Info : 30M x 0.32mm x 0.25µm



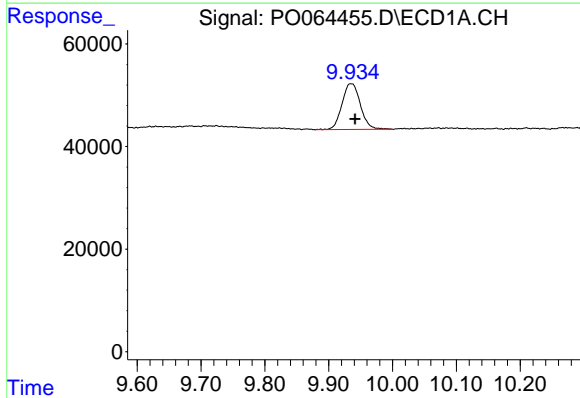


#1 Tetrachloro-m-xylene  
 R.T.: 4.313 min  
 Delta R.T.: 0.000 min  
 Response: 137089  
 Conc: 4.63 ng/ml

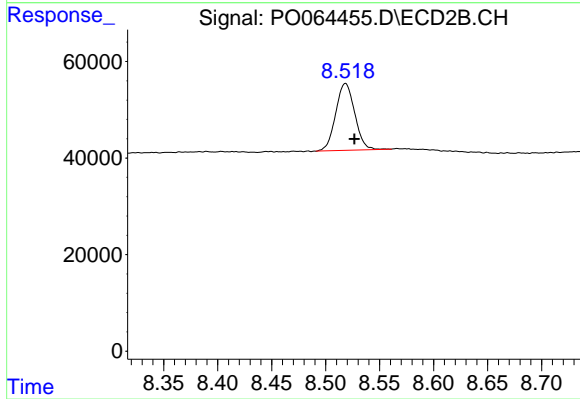
Instrument :  
 ECD\_O  
 ClientSampleId :  
 01-A-01-B-01-C



#1 Tetrachloro-m-xylene  
 R.T.: 3.561 min  
 Delta R.T.: 0.000 min  
 Response: 111656  
 Conc: 4.69 ng/ml



#2 Decachlorobiphenyl  
 R.T.: 9.935 min  
 Delta R.T.: -0.006 min  
 Response: 178140  
 Conc: 4.35 ng/ml



#2 Decachlorobiphenyl  
 R.T.: 8.518 min  
 Delta R.T.: -0.008 min  
 Response: 170092  
 Conc: 4.16 ng/ml