

Data Path : Z:\pestpcbsrv\HPCHEM1\ECD\_0\Data\PO120621\  
 Data File : PO083474.D  
 Signal(s) : Signal #1: ECD1A.CH Signal #2: ECD2B.CH  
 Acq On : 07 Dec 2021 11:44  
 Operator : AJ\MA  
 Sample : AR1254ICC250  
 Misc :  
 ALS Vial : 23 Sample Multiplier: 1

Instrument :  
 ECD\_0  
 ClientSampleId :  
 AR1254ICC250

Integration File signal 1: autoint1.e  
 Integration File signal 2: autoint2.e  
 Quant Time: Dec 07 11:59:14 2021  
 Quant Method : Z:\pestpcbsrv\HPCHEM1\ECD\_0\methods\PO120621.M  
 Quant Title : GC EXTRACTABLES  
 QLast Update : Tue Dec 07 11:46:31 2021  
 Response via : Initial Calibration  
 Integrator: ChemStation 6890 Scale Mode: Small noise peaks clipped

Volume Inj. : 2 µl  
 Signal #1 Phase : ZB-MR1 Signal #2 Phase: ZB-MR2  
 Signal #1 Info : 30Mx0.32mmx 0.50µ Signal #2 Info : 30M x 0.32mm x 0.25µm

| Compound                    | RT#1   | RT#2  | Resp#1  | Resp#2 | ng/ml   | ng/ml   |
|-----------------------------|--------|-------|---------|--------|---------|---------|
| -----                       |        |       |         |        |         |         |
| System Monitoring Compounds |        |       |         |        |         |         |
| 1) SA Tetrachlo...          | 4.942  | 3.946 | 2339294 | 795641 | 23.733  | 24.104  |
| 2) SA Decachlor...          | 11.023 | 9.247 | 1823140 | 829844 | 24.193  | 24.155  |
| Target Compounds            |        |       |         |        |         |         |
| 26) L6 AR-1254-1            | 7.191  | 6.073 | 799703  | 515324 | 249.667 | 247.444 |
| 27) L6 AR-1254-2            | 7.421  | 6.233 | 1167007 | 446175 | 246.243 | 236.459 |
| 28) L6 AR-1254-3            | 7.806  | 6.654 | 1205415 | 671233 | 236.109 | 251.518 |
| 29) L6 AR-1254-4            | 8.105  | 6.895 | 877575  | 485783 | 230.457 | 255.540 |
| 30) L6 AR-1254-5            | 8.534  | 7.324 | 905698  | 631727 | 240.616 | 247.731 |
| -----                       |        |       |         |        |         |         |

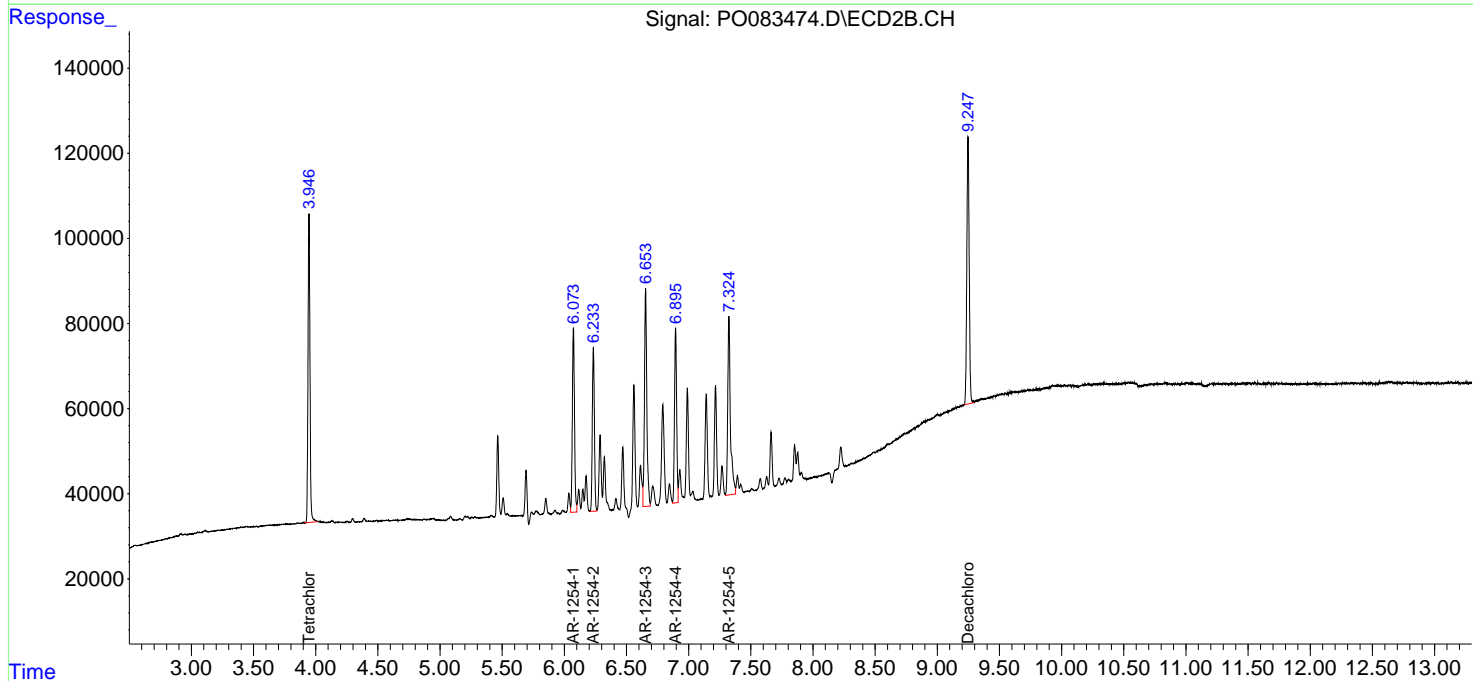
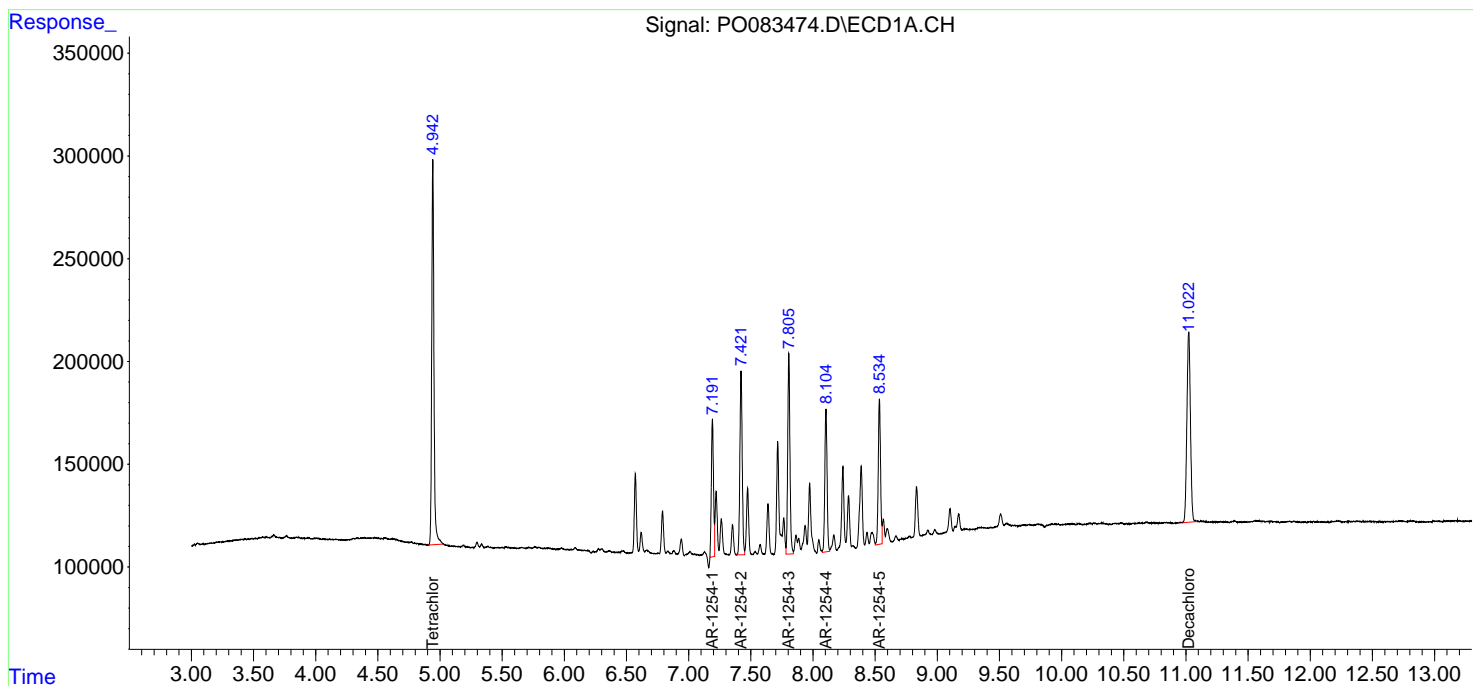
(f)=RT Delta > 1/2 Window (#)=Amounts differ by > 25% (m)=manual int.

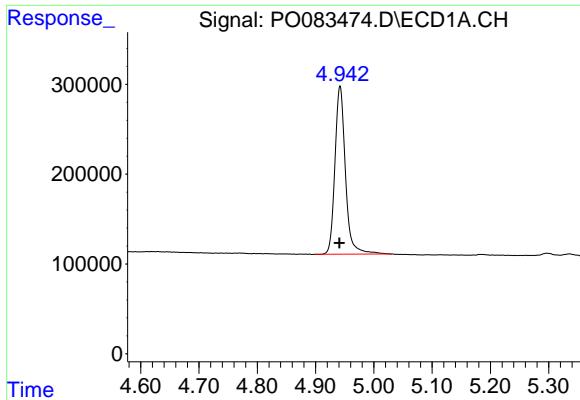
Data Path : Z:\pestpcbsrv\HPCHEM1\ECD\_0\Data\PO120621\  
 Data File : P0083474.D  
 Signal(s) : Signal #1: ECD1A.CH Signal #2: ECD2B.CH  
 Acq On : 07 Dec 2021 11:44  
 Operator : AJ\MA  
 Sample : AR1254ICC250  
 Misc :  
 ALS Vial : 23 Sample Multiplier: 1

Instrument :  
 ECD\_O  
 ClientSampleId :  
 AR1254ICC250

Integration File signal 1: autoint1.e  
 Integration File signal 2: autoint2.e  
 Quant Time: Dec 07 11:59:14 2021  
 Quant Method : Z:\pestpcbsrv\HPCHEM1\ECD\_0\methods\PO120621.M  
 Quant Title : GC EXTRACTABLES  
 QLast Update : Tue Dec 07 11:46:31 2021  
 Response via : Initial Calibration  
 Integrator: ChemStation 6890 Scale Mode: Small noise peaks clipped

Volume Inj. : 2 µl  
 Signal #1 Phase : ZB-MR1 Signal #2 Phase: ZB-MR2  
 Signal #1 Info : 30Mx0.32mmx 0.50µ Signal #2 Info : 30M x 0.32mm x 0.25µm

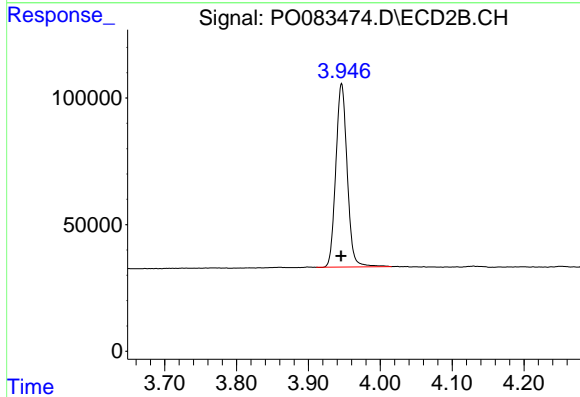




#1 Tetrachloro-m-xylene

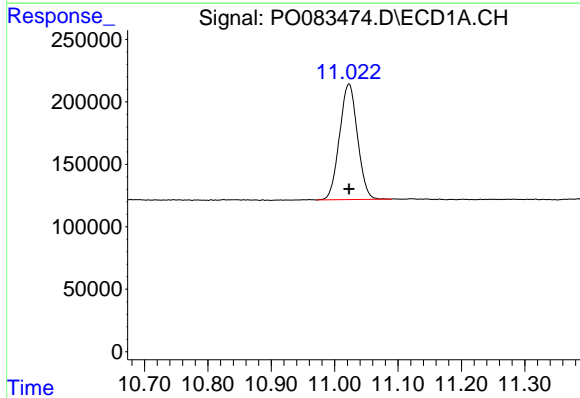
R.T.: 4.942 min  
 Delta R.T.: 0.001 min  
 Response: 2339294  
 Conc: 23.73 ng/ml

Instrument :  
 ECD\_O  
 ClientSampleId :  
 AR1254ICC250



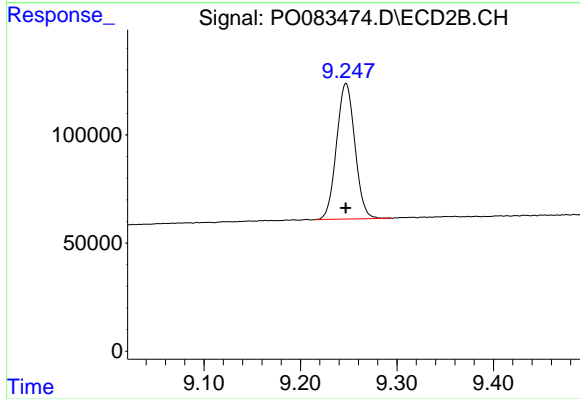
#1 Tetrachloro-m-xylene

R.T.: 3.946 min  
 Delta R.T.: 0.000 min  
 Response: 795641  
 Conc: 24.10 ng/ml



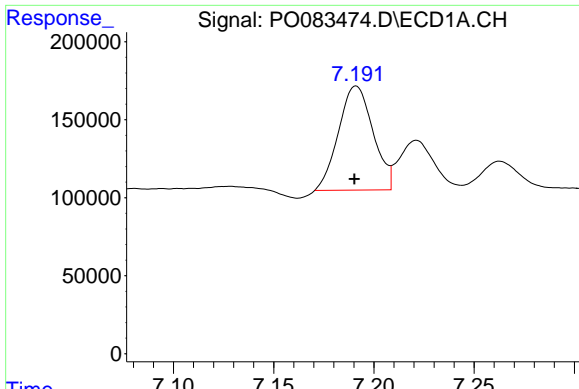
#2 Decachlorobiphenyl

R.T.: 11.023 min  
 Delta R.T.: 0.000 min  
 Response: 1823140  
 Conc: 24.19 ng/ml



#2 Decachlorobiphenyl

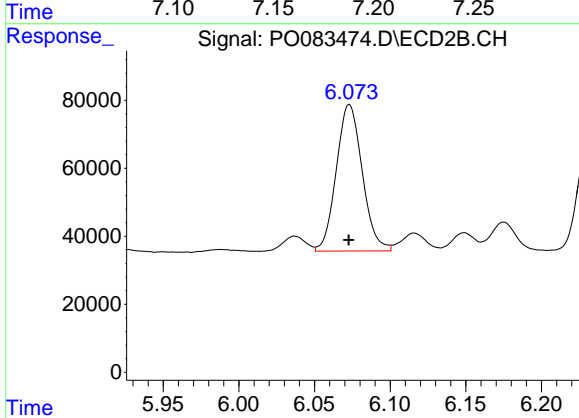
R.T.: 9.247 min  
 Delta R.T.: 0.000 min  
 Response: 829844  
 Conc: 24.15 ng/ml



#26 AR-1254-1

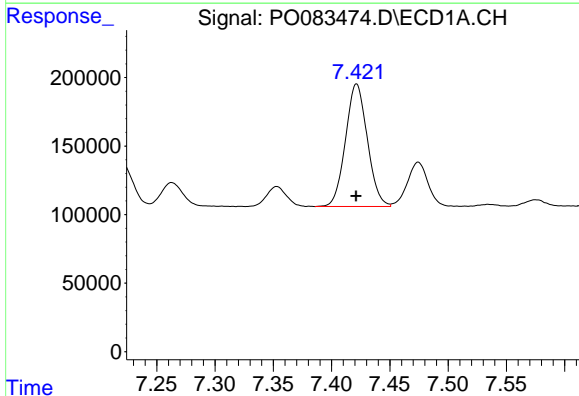
R.T.: 7.191 min  
 Delta R.T.: 0.000 min  
 Response: 799703  
 Conc: 249.67 ng/ml

Instrument :  
 ECD\_O  
 ClientSampleId :  
 AR1254ICC250



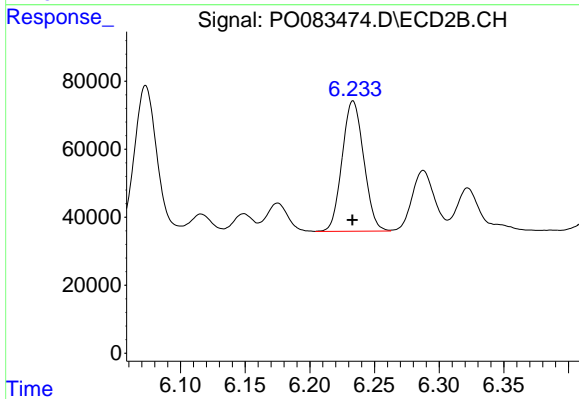
#26 AR-1254-1

R.T.: 6.073 min  
 Delta R.T.: 0.000 min  
 Response: 515324  
 Conc: 247.44 ng/ml



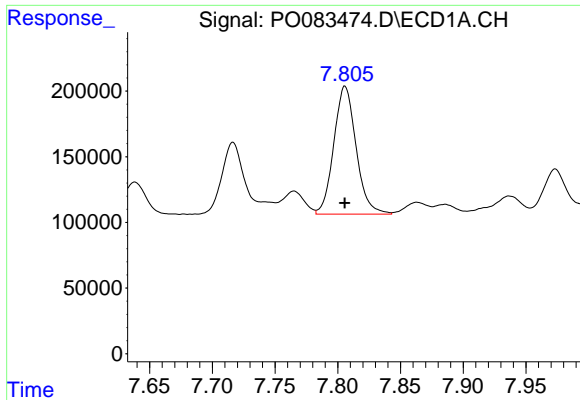
#27 AR-1254-2

R.T.: 7.421 min  
 Delta R.T.: 0.000 min  
 Response: 1167007  
 Conc: 246.24 ng/ml



#27 AR-1254-2

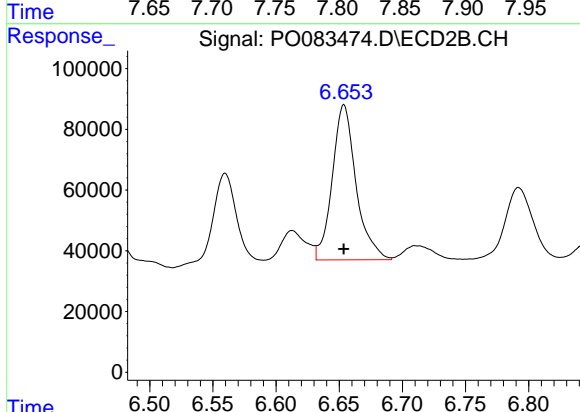
R.T.: 6.233 min  
 Delta R.T.: 0.000 min  
 Response: 446175  
 Conc: 236.46 ng/ml



#28 AR-1254-3

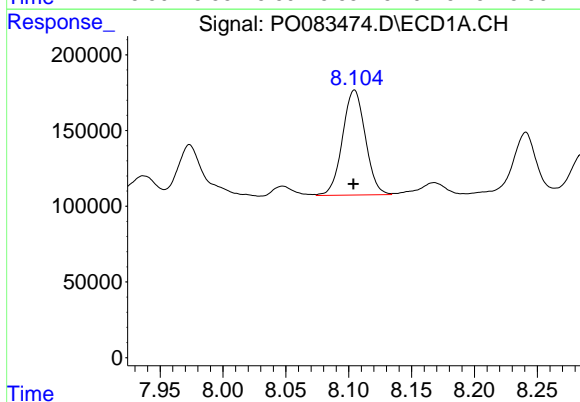
R.T.: 7.806 min  
 Delta R.T.: 0.000 min  
 Response: 1205415  
 Conc: 236.11 ng/ml

Instrument :  
 ECD\_O  
 ClientSampleId :  
 AR1254ICC250



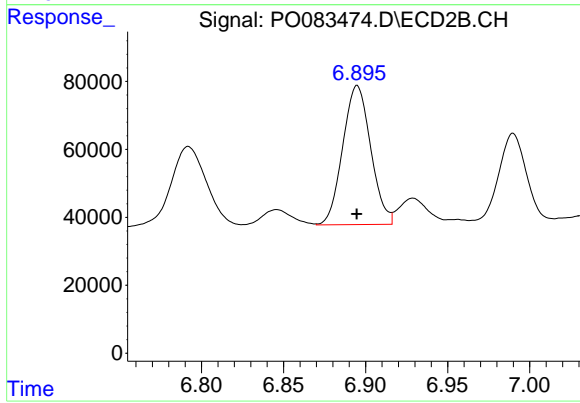
#28 AR-1254-3

R.T.: 6.654 min  
 Delta R.T.: 0.000 min  
 Response: 671233  
 Conc: 251.52 ng/ml



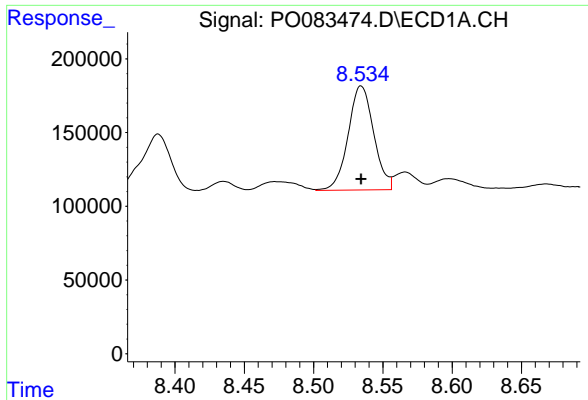
#29 AR-1254-4

R.T.: 8.105 min  
 Delta R.T.: 0.000 min  
 Response: 877575  
 Conc: 230.46 ng/ml



#29 AR-1254-4

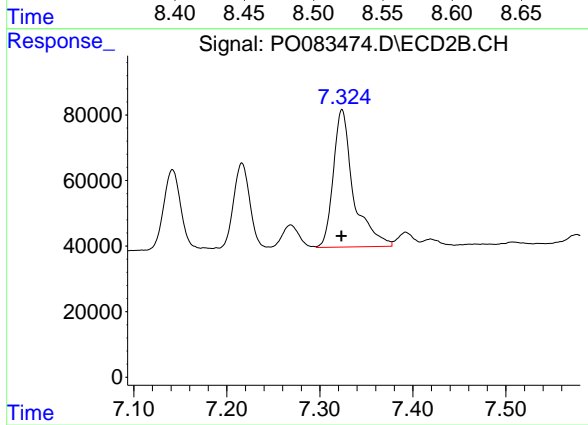
R.T.: 6.895 min  
 Delta R.T.: 0.000 min  
 Response: 485783  
 Conc: 255.54 ng/ml



#30 AR-1254-5

R.T.: 8.534 min  
Delta R.T.: 0.000 min  
Response: 905698  
Conc: 240.62 ng/ml

Instrument :  
ECD\_O  
ClientSampleId :  
AR1254ICC250



#30 AR-1254-5

R.T.: 7.324 min  
Delta R.T.: 0.000 min  
Response: 631727  
Conc: 247.73 ng/ml