

Data Path : Z:\pestpcbsrv\HPCHEM1\ECD_0\Data\PO120622\
 Data File : PO091100.D
 Signal(s) : Signal #1: ECD1A.ch Signal #2: ECD2B.ch
 Acq On : 06 Dec 2022 15:22
 Operator : YP/AJ
 Sample : PB149430BL
 Misc :
 ALS Vial : 7 Sample Multiplier: 1

Instrument :
 ECD_0
 ClientSampleId :
 PB149430BL

Integration File signal 1: autoint1.e
 Integration File signal 2: autoint2.e
 Quant Time: Dec 06 23:46:22 2022
 Quant Method : Z:\pestpcbsrv\HPCHEM1\ECD_0\methods\PO112522.M
 Quant Title : GC EXTRACTABLES
 QLast Update : Mon Nov 28 11:25:59 2022
 Response via : Initial Calibration
 Integrator: ChemStation

Volume Inj. : 2 µl
 Signal #1 Phase : ZB-MR1 Signal #2 Phase: ZB-MR2
 Signal #1 Info : 30Mx0.32mmx 0.50µ Signal #2 Info : 30M x 0.32mm x 0.25µm

Compound	RT#1	RT#2	Resp#1	Resp#2	ng/ml	ng/ml

System Monitoring Compounds						
1) SA Tetrachlo...	4.299	3.475	66592708	22181400	19.696	21.134
2) SA Decachlor...	10.044	8.477	51452869	21797658	19.371	22.452

Target Compounds

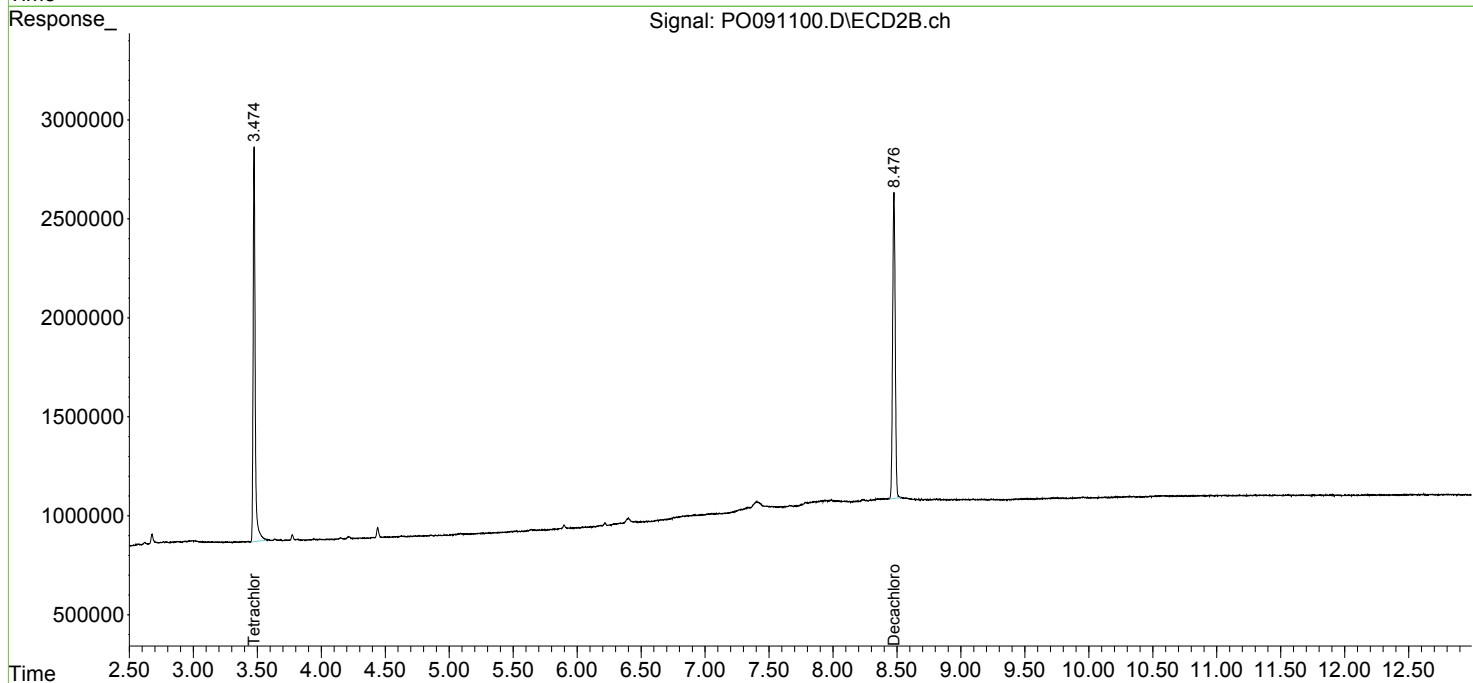
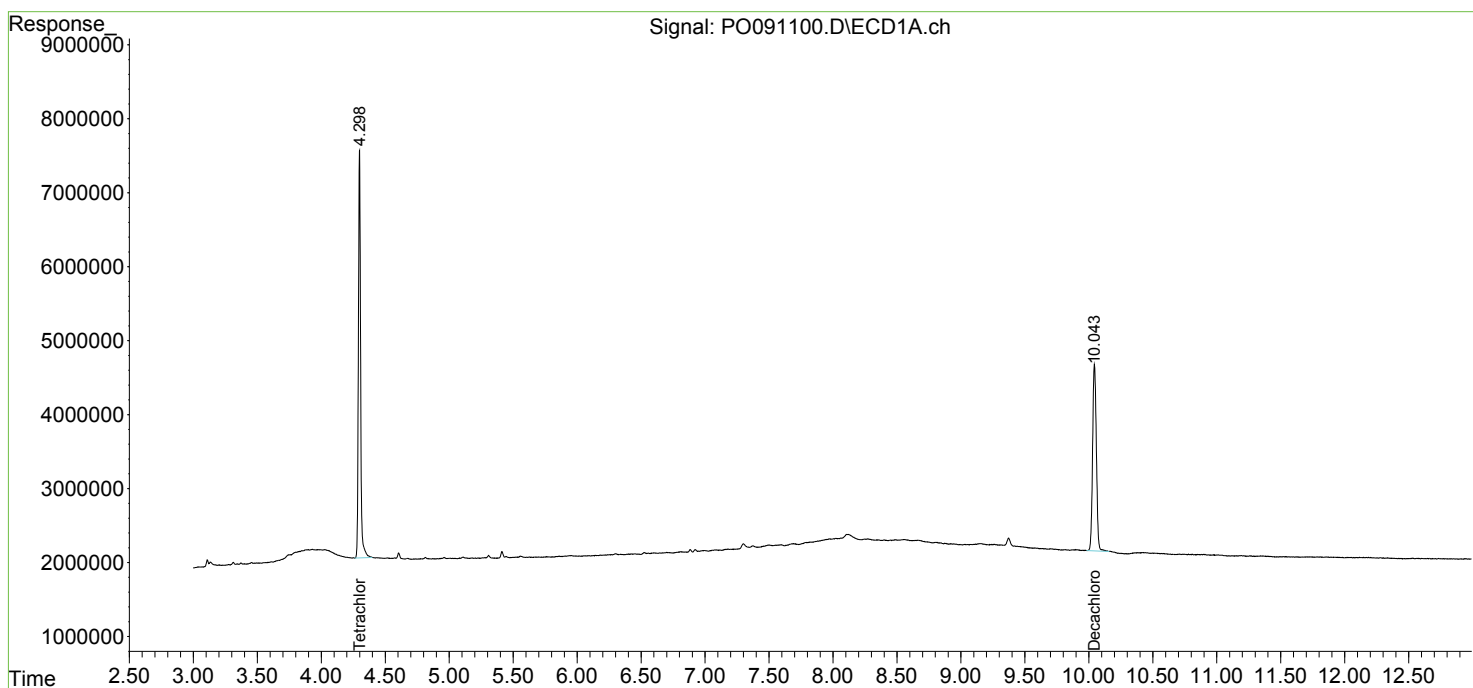
 (f)=RT Delta > 1/2 Window (#)=Amounts differ by > 25% (m)=manual int.

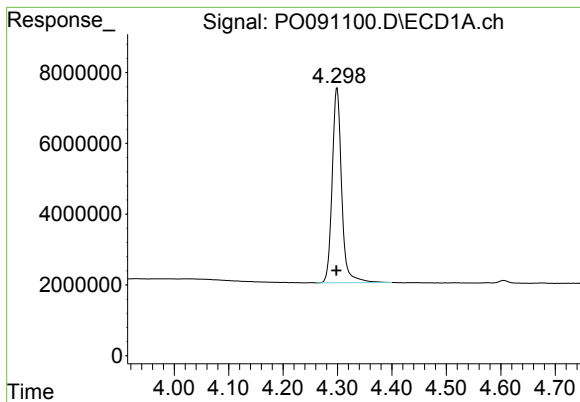
Data Path : Z:\pestpcbsrv\HPCHEM1\ECD_O\Data\PO120622\
 Data File : PO091100.D
 Signal(s) : Signal #1: ECD1A.ch Signal #2: ECD2B.ch
 Acq On : 06 Dec 2022 15:22
 Operator : YP/AJ
 Sample : PB149430BL
 Misc :
 ALS Vial : 7 Sample Multiplier: 1

Instrument :
 ECD_O
 ClientSampleId :
 PB149430BL

Integration File signal 1: autoint1.e
 Integration File signal 2: autoint2.e
 Quant Time: Dec 06 23:46:22 2022
 Quant Method : Z:\pestpcbsrv\HPCHEM1\ECD_O\methods\PO112522.M
 Quant Title : GC EXTRACTABLES
 QLast Update : Mon Nov 28 11:25:59 2022
 Response via : Initial Calibration
 Integrator: ChemStation

Volume Inj. : 2 µl
 Signal #1 Phase : ZB-MR1 Signal #2 Phase: ZB-MR2
 Signal #1 Info : 30Mx0.32mmx 0.50µ Signal #2 Info : 30M x 0.32mm x 0.25µm

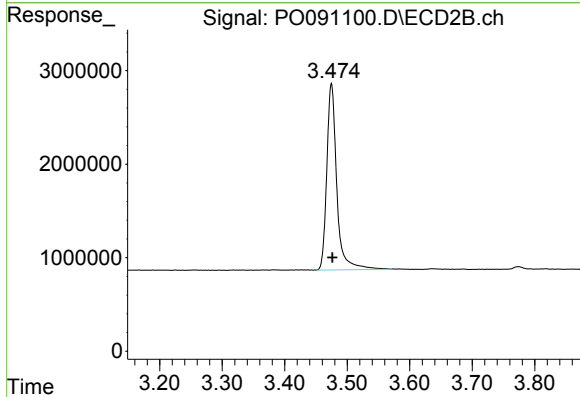




#1 Tetrachloro-m-xylene

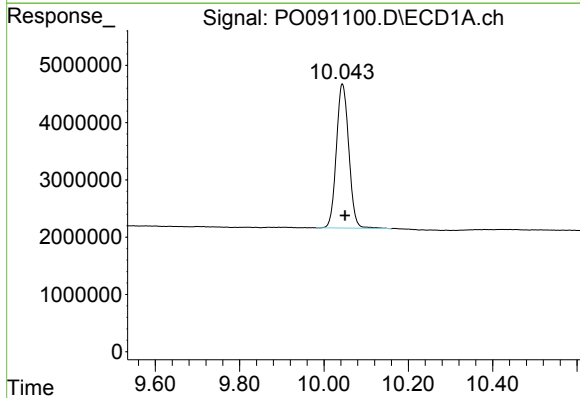
R.T.: 4.299 min
 Delta R.T.: 0.001 min
 Response: 66592708
 Conc: 19.70 ng/ml

Instrument :
 ECD_O
 ClientSampleId :
 PB149430BL



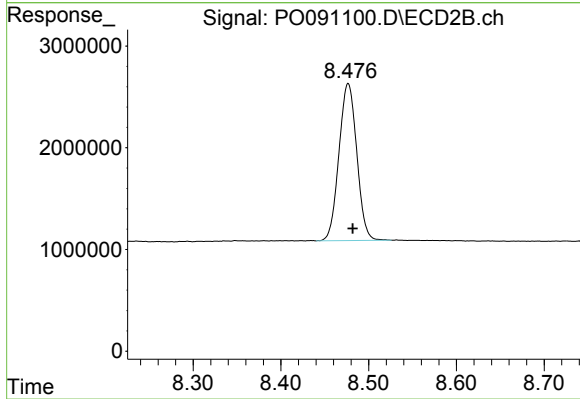
#1 Tetrachloro-m-xylene

R.T.: 3.475 min
 Delta R.T.: -0.001 min
 Response: 22181400
 Conc: 21.13 ng/ml



#2 Decachlorobiphenyl

R.T.: 10.044 min
 Delta R.T.: -0.006 min
 Response: 51452869
 Conc: 19.37 ng/ml



#2 Decachlorobiphenyl

R.T.: 8.477 min
 Delta R.T.: -0.005 min
 Response: 21797658
 Conc: 22.45 ng/ml