

Data Path : Z:\pestpcbsrv\HPCHEM1\ECD_0\Data\PO120722\
 Data File : PO091142.D
 Signal(s) : Signal #1: ECD1A.ch Signal #2: ECD2B.ch
 Acq On : 07 Dec 2022 18:25
 Operator : YP/AJ
 Sample : N5900-01
 Misc :
 ALS Vial : 17 Sample Multiplier: 1

Instrument :
 ECD_0
 ClientSampleId :

Integration File signal 1: autoint1.e
 Integration File signal 2: autoint2.e
 Quant Time: Dec 08 00:12:31 2022
 Quant Method : Z:\pestpcbsrv\HPCHEM1\ECD_0\methods\PO112522.M
 Quant Title : GC EXTRACTABLES
 QLast Update : Mon Nov 28 11:25:59 2022
 Response via : Initial Calibration
 Integrator: ChemStation

Volume Inj. : 2 µl
 Signal #1 Phase : ZB-MR1 Signal #2 Phase: ZB-MR2
 Signal #1 Info : 30Mx0.32mmx 0.50µ Signal #2 Info : 30M x 0.32mm x 0.25µm

Compound	RT#1	RT#2	Resp#1	Resp#2	ng/ml	ng/ml
System Monitoring Compounds						
1) SA Tetrachlo...	4.298	3.476	73407320	23047177	21.711	21.959
2) SA Decachlor...	10.045	8.478	43543143	18487594	16.393	19.042
Target Compounds						
3) L1 AR-1016-1	5.474	4.561	3348022	349918	29.751	9.495 #
4) L1 AR-1016-2	5.499	4.580	6380747	669336	39.247	12.989 #
5) L1 AR-1016-3	5.569	4.756	2805219	508774	26.906	18.694 #
6) L1 AR-1016-4	5.695f	4.798	945078	1707501	11.663	73.868 #
7) L1 AR-1016-5	5.953	5.009	5074098	997405	57.861	33.814 #
8) L2 AR-1221-1	4.523	3.697	1392367	162215	34.083	12.307 #
9) L2 AR-1221-2	4.604	3.773	2509183	926335	82.725	93.167
10) L2 AR-1221-3	4.671	3.895f	1360245	994510	14.785	32.022 #
11) L3 AR-1232-1	4.671	3.895f	1360245	994510	18.905	41.623 #
12) L3 AR-1232-2	5.181	4.580	24531149	669336	566.235	27.715 #
13) L3 AR-1232-3	5.499	4.756	6380747	508774	85.394	40.189 #
14) L3 AR-1232-4	5.695f	4.839	945078	1408780	25.218	116.547 #
15) L3 AR-1232-5	5.750	5.009	4692377	997405	156.917	73.744 #
16) L4 AR-1242-1	5.474	4.561	3348022	349918	37.510	12.051 #
17) L4 AR-1242-2	5.499	4.580	6380747	669336	50.254	16.605 #
18) L4 AR-1242-3	5.569	4.756	2805219	508774	33.652	24.328 #
19) L4 AR-1242-4	5.695f	4.839	945078	1408780	14.877	61.696 #
20) L4 AR-1242-5	6.405	5.366	3392525	3854644	49.648	136.616 #
21) L5 AR-1248-1	5.474	4.561	3348022	349918	47.001	14.874 #
22) L5 AR-1248-2	5.750	4.798	4692377	1707501	44.264	52.153
23) L5 AR-1248-3	5.953	4.839	5074098	1408780	43.117	41.508
24) L5 AR-1248-4	6.362	5.009	3264677	997405	26.697	24.996
25) L5 AR-1248-5	6.405	5.406	3392525	1447539	29.578	40.383 #
26) L6 AR-1254-1	6.336	5.366	8612834	3854644	68.578	65.771
27) L6 AR-1254-2	6.556	5.514	12243137	3086997	64.931	57.841
28) L6 AR-1254-3	6.925	5.918	13141421	6606139	70.111	81.085
29) L6 AR-1254-4	7.210	6.148	5252161	1603987	38.021	32.783
30) L6 AR-1254-5	7.632	6.567	10850364	3126703	70.719	41.944 #
31) L7 AR-1260-1	7.089	6.049	5931104	3057904	38.663	52.812 #
32) L7 AR-1260-2	7.340	6.240	14727633	2334672	84.378	34.190 #
33) L7 AR-1260-3	7.709	6.392	3964991	2344508	34.880	35.743
34) L7 AR-1260-4	7.931	6.865	8061953	709389	59.494	14.853 #
35) L7 AR-1260-5	8.251	7.110	4314070	1806441	16.984	16.617
36) L8 AR-1262-1	7.709	6.606	3964991	764614	21.701	10.173 #
37) L8 AR-1262-2	8.251	7.110	4314070	1806441	13.946	14.190
38) L8 AR-1262-3	8.569	7.395	3042075	811144	14.110	15.392
39) L8 AR-1262-4	8.652	7.457	2341662	1278349	23.525	13.460 #
40) L8 AR-1262-5	9.300	7.955	947892	518709	8.212	11.373 #
41) L9 AR-1268-1	8.569	7.395	3042075	811144	8.261	5.438 #

Data Path : Z:\pestpcbsrv\HPCHEM1\ECD_0\Data\PO120722\
 Data File : PO091142.D
 Signal(s) : Signal #1: ECD1A.ch Signal #2: ECD2B.ch
 Acq On : 07 Dec 2022 18:25
 Operator : YP/AJ
 Sample : N5900-01
 Misc :
 ALS Vial : 17 Sample Multiplier: 1

Instrument :
 ECD_0
 ClientSampleId :

Integration File signal 1: autoint1.e
 Integration File signal 2: autoint2.e
 Quant Time: Dec 08 00:12:31 2022
 Quant Method : Z:\pestpcbsrv\HPCHEM1\ECD_0\methods\PO112522.M
 Quant Title : GC EXTRACTABLES
 QLast Update : Mon Nov 28 11:25:59 2022
 Response via : Initial Calibration
 Integrator: ChemStation

Volume Inj. : 2 µl
 Signal #1 Phase : ZB-MR1 Signal #2 Phase: ZB-MR2
 Signal #1 Info : 30Mx0.32mmx 0.50µ Signal #2 Info : 30M x 0.32mm x 0.25µm

	Compound	RT#1	RT#2	Resp#1	Resp#2	ng/ml	ng/ml
42)	L9 AR-1268-2	8.652	7.457	2341662	1278349	7.042	9.514 #
43)	L9 AR-1268-3	8.879	7.666	510553	419904	1.792	3.638 #
44)	L9 AR-1268-4	9.300	7.955	947892	518709	7.679	10.514 #
45)	L9 AR-1268-5	9.710	8.234	1924425	847545	2.115	2.503

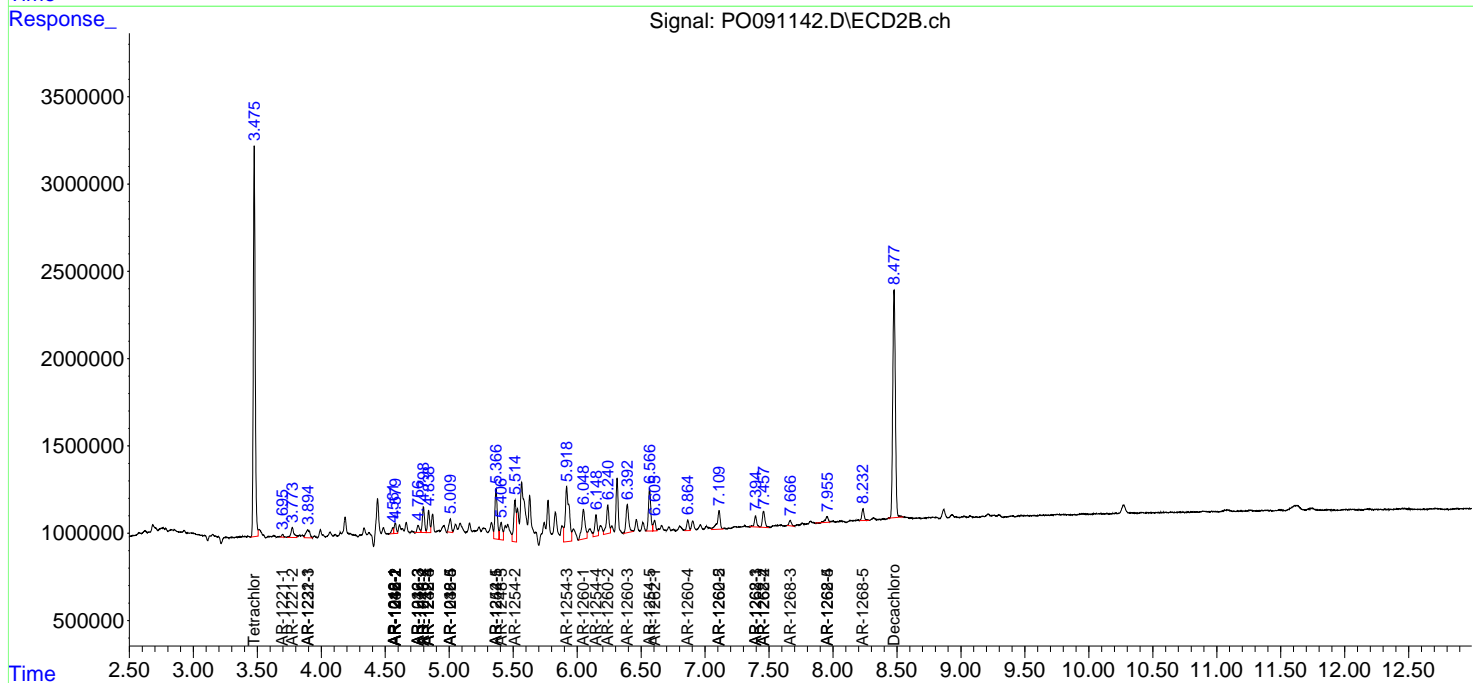
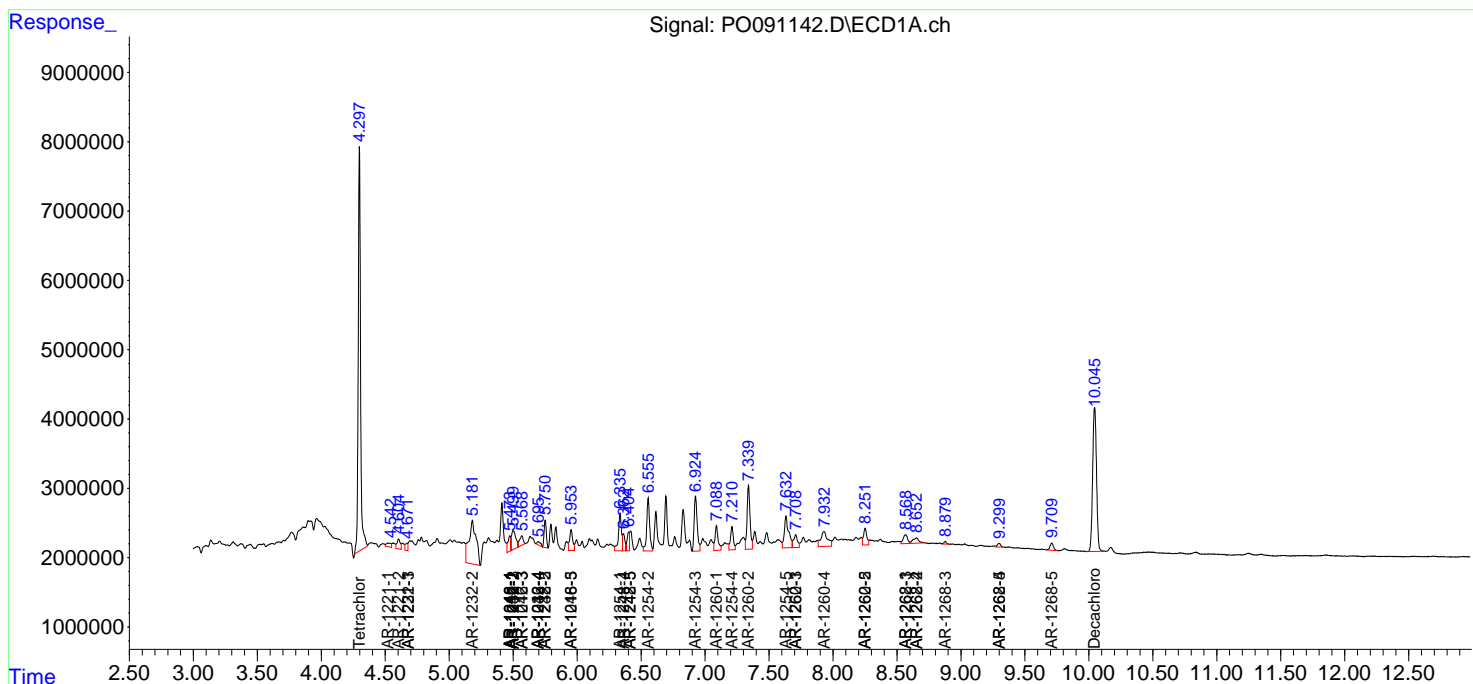
(f)=RT Delta > 1/2 Window (#)=Amounts differ by > 25% (m)=manual int.

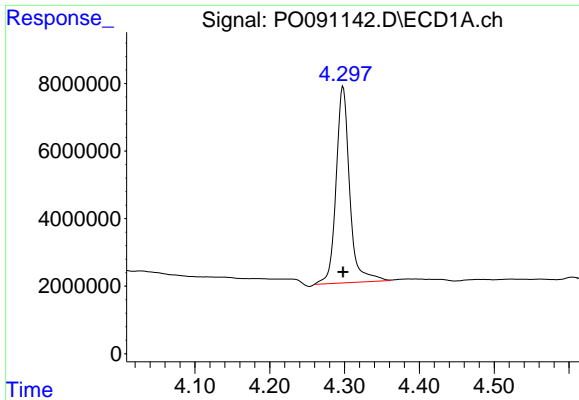
Data Path : Z:\pestpcbsrv\HPCHEM1\ECD_O\Data\PO120722\
 Data File : PO091142.D
 Signal(s) : Signal #1: ECD1A.ch Signal #2: ECD2B.ch
 Acq On : 07 Dec 2022 18:25
 Operator : YP/AJ
 Sample : N5900-01
 Misc :
 ALS Vial : 17 Sample Multiplier: 1

Instrument :
 ECD_O
 ClientSampleId :

Integration File signal 1: autoint1.e
 Integration File signal 2: autoint2.e
 Quant Time: Dec 08 00:12:31 2022
 Quant Method : Z:\pestpcbsrv\HPCHEM1\ECD_O\methods\PO112522.M
 Quant Title : GC EXTRACTABLES
 QLast Update : Mon Nov 28 11:25:59 2022
 Response via : Initial Calibration
 Integrator: ChemStation

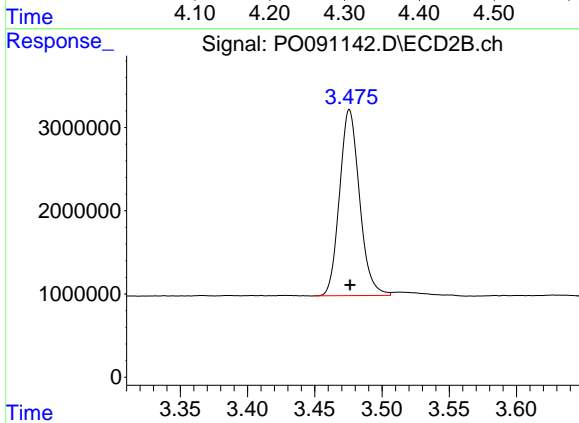
Volume Inj. : 2 µl
 Signal #1 Phase : ZB-MR1 Signal #2 Phase: ZB-MR2
 Signal #1 Info : 30Mx0.32mmx 0.50µ Signal #2 Info : 30M x 0.32mm x 0.25µm



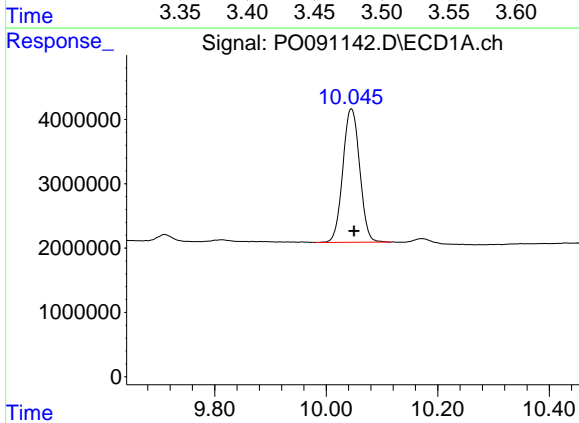


#1 Tetrachloro-m-xylene
 R.T.: 4.298 min
 Delta R.T.: 0.000 min
 Response: 73407320
 Conc: 21.71 ng/ml

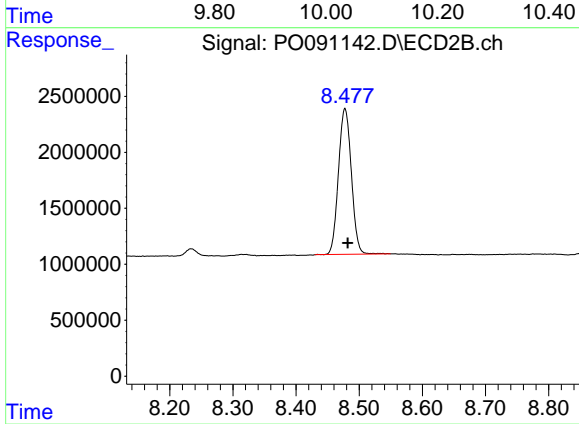
Instrument :
 ECD_O
 ClientSampleId :



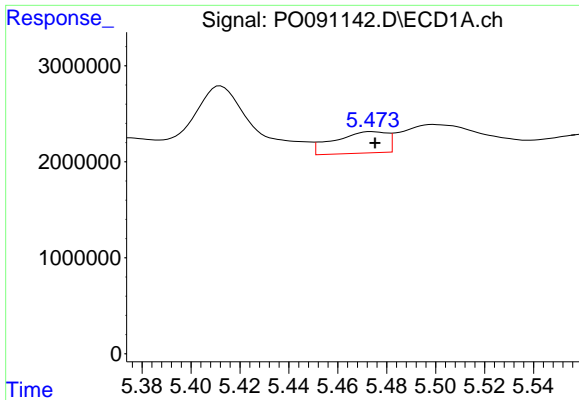
#1 Tetrachloro-m-xylene
 R.T.: 3.476 min
 Delta R.T.: 0.000 min
 Response: 23047177
 Conc: 21.96 ng/ml



#2 Decachlorobiphenyl
 R.T.: 10.045 min
 Delta R.T.: -0.005 min
 Response: 43543143
 Conc: 16.39 ng/ml



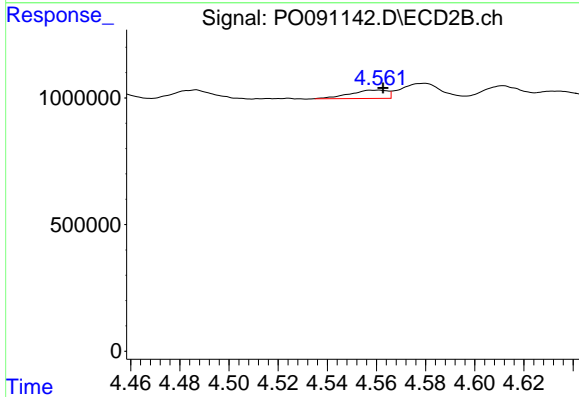
#2 Decachlorobiphenyl
 R.T.: 8.478 min
 Delta R.T.: -0.004 min
 Response: 18487594
 Conc: 19.04 ng/ml



#3 AR-1016-1

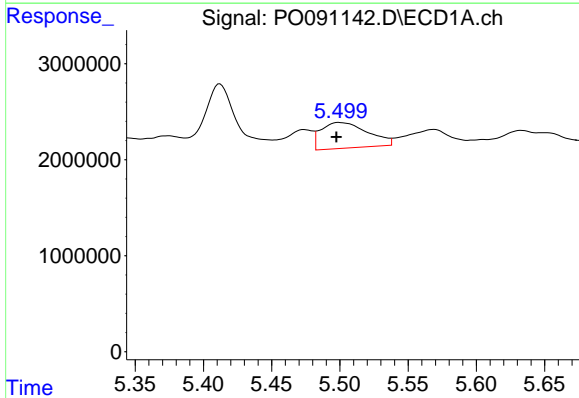
R.T.: 5.474 min
 Delta R.T.: -0.001 min
 Response: 3348022
 Conc: 29.75 ng/ml

Instrument :
 ECD_O
 ClientSampleId :



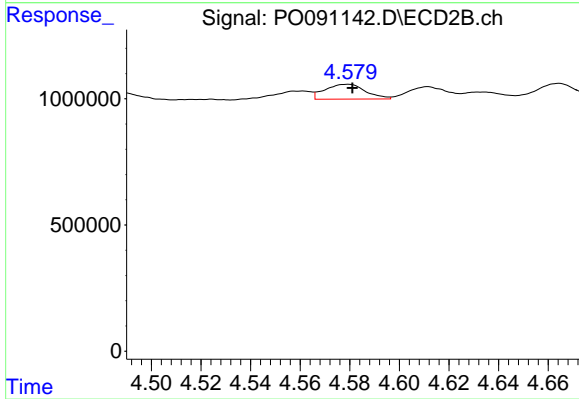
#3 AR-1016-1

R.T.: 4.561 min
 Delta R.T.: -0.002 min
 Response: 349918
 Conc: 9.50 ng/ml



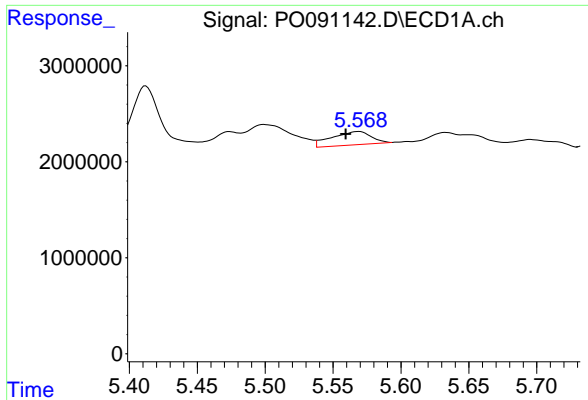
#4 AR-1016-2

R.T.: 5.499 min
 Delta R.T.: 0.002 min
 Response: 6380747
 Conc: 39.25 ng/ml



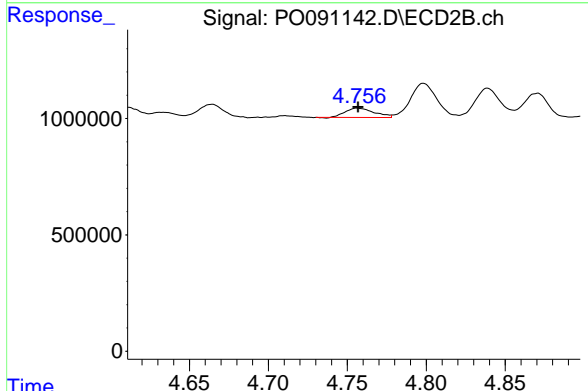
#4 AR-1016-2

R.T.: 4.580 min
 Delta R.T.: -0.002 min
 Response: 669336
 Conc: 12.99 ng/ml

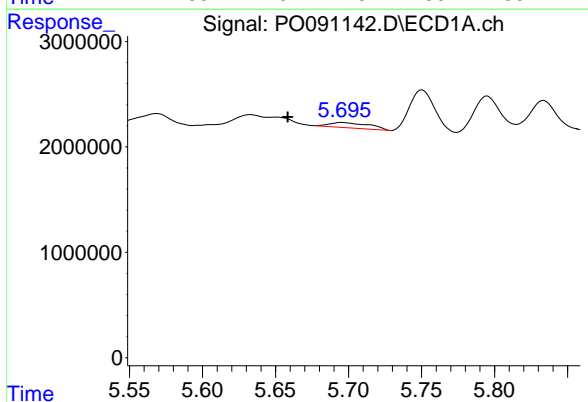


#5 AR-1016-3
 R.T.: 5.569 min
 Delta R.T.: 0.010 min
 Response: 2805219
 Conc: 26.91 ng/ml

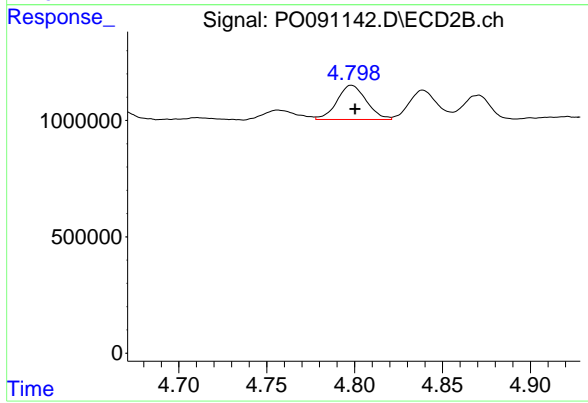
Instrument :
 ECD_O
 ClientSampleId :



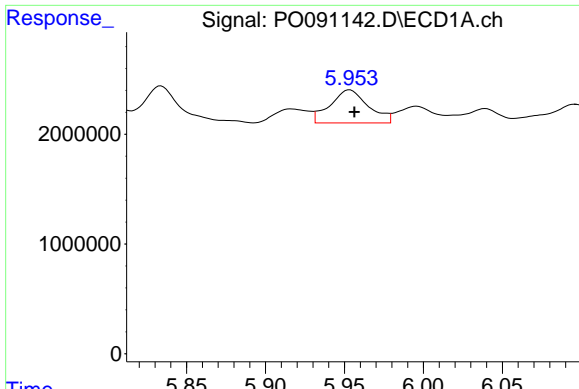
#5 AR-1016-3
 R.T.: 4.756 min
 Delta R.T.: 0.000 min
 Response: 508774
 Conc: 18.69 ng/ml



#6 AR-1016-4
 R.T.: 5.695 min
 Delta R.T.: 0.037 min
 Response: 945078
 Conc: 11.66 ng/ml



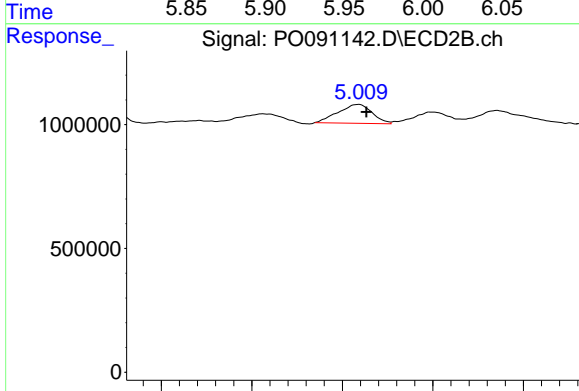
#6 AR-1016-4
 R.T.: 4.798 min
 Delta R.T.: -0.002 min
 Response: 1707501
 Conc: 73.87 ng/ml



#7 AR-1016-5

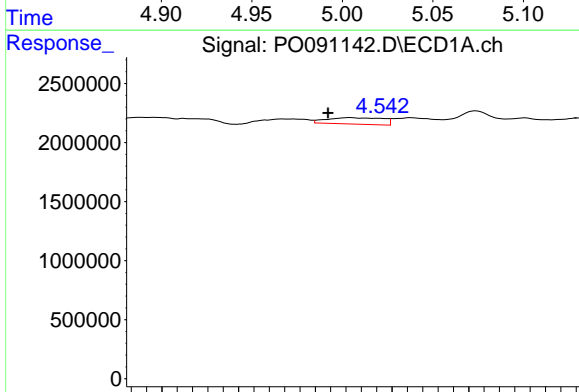
R.T.: 5.953 min
 Delta R.T.: -0.003 min
 Response: 5074098
 Conc: 57.86 ng/ml

Instrument :
 ECD_O
 ClientSampleId :



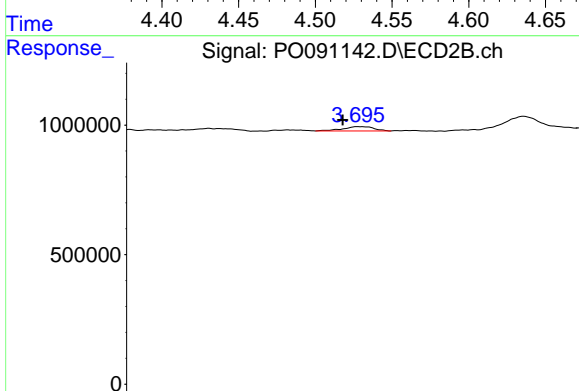
#7 AR-1016-5

R.T.: 5.009 min
 Delta R.T.: -0.004 min
 Response: 997405
 Conc: 33.81 ng/ml



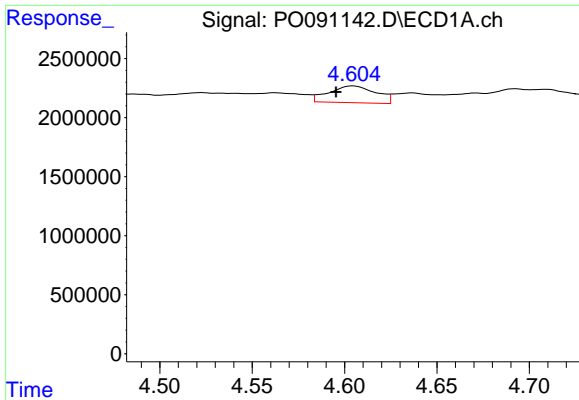
#8 AR-1221-1

R.T.: 4.523 min
 Delta R.T.: 0.014 min
 Response: 1392367
 Conc: 34.08 ng/ml



#8 AR-1221-1

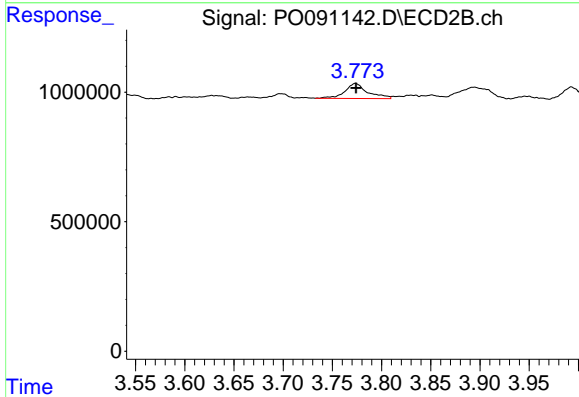
R.T.: 3.697 min
 Delta R.T.: 0.007 min
 Response: 162215
 Conc: 12.31 ng/ml



#9 AR-1221-2

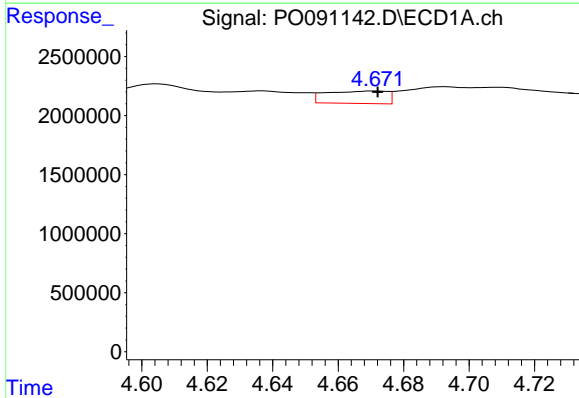
R.T.: 4.604 min
 Delta R.T.: 0.009 min
 Response: 2509183
 Conc: 82.73 ng/ml

Instrument :
 ECD_O
 ClientSampleId :



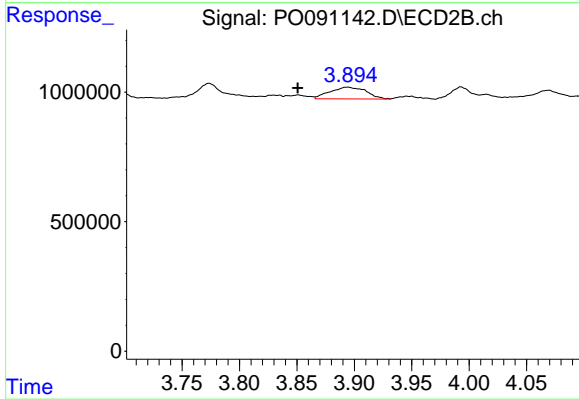
#9 AR-1221-2

R.T.: 3.773 min
 Delta R.T.: 0.000 min
 Response: 926335
 Conc: 93.17 ng/ml



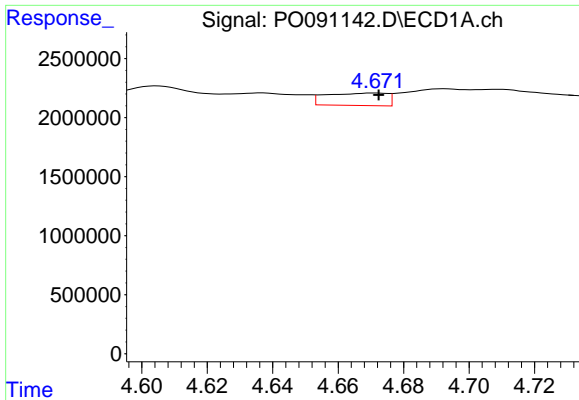
#10 AR-1221-3

R.T.: 4.671 min
 Delta R.T.: 0.000 min
 Response: 1360245
 Conc: 14.79 ng/ml



#10 AR-1221-3

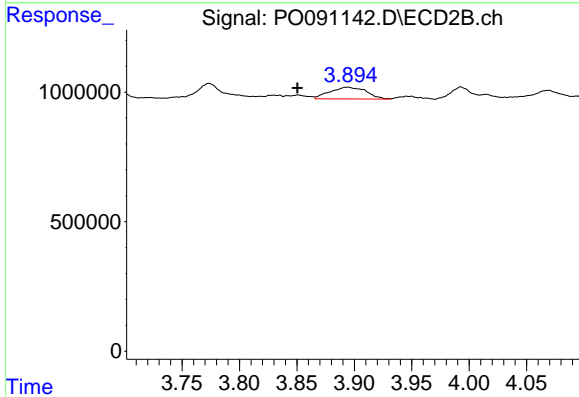
R.T.: 3.895 min
 Delta R.T.: 0.044 min
 Response: 994510
 Conc: 32.02 ng/ml



#11 AR-1232-1

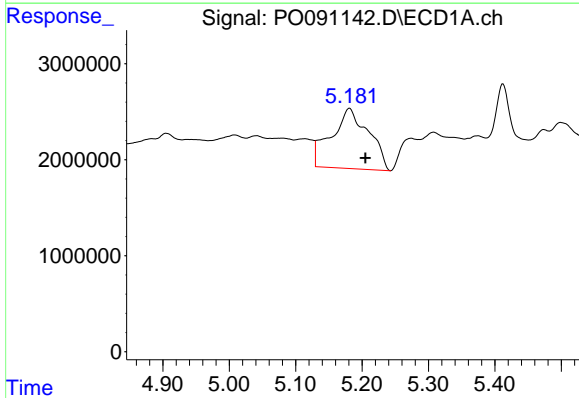
R.T.: 4.671 min
 Delta R.T.: -0.001 min
 Response: 1360245
 Conc: 18.91 ng/ml

Instrument :
 ECD_O
 ClientSampleId :



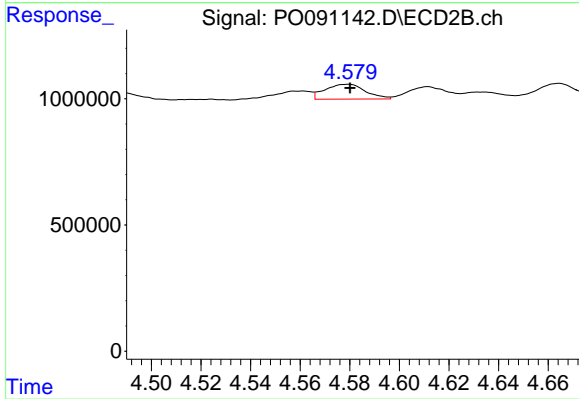
#11 AR-1232-1

R.T.: 3.895 min
 Delta R.T.: 0.044 min
 Response: 994510
 Conc: 41.62 ng/ml



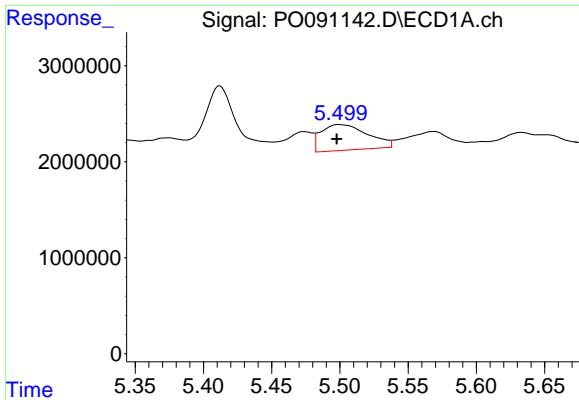
#12 AR-1232-2

R.T.: 5.181 min
 Delta R.T.: -0.024 min
 Response: 24531149
 Conc: 566.24 ng/ml



#12 AR-1232-2

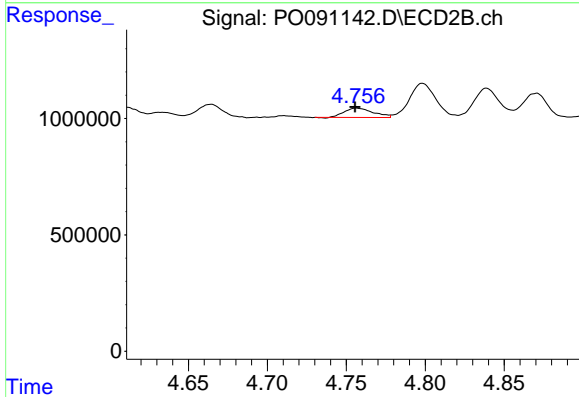
R.T.: 4.580 min
 Delta R.T.: 0.000 min
 Response: 669336
 Conc: 27.71 ng/ml



#13 AR-1232-3

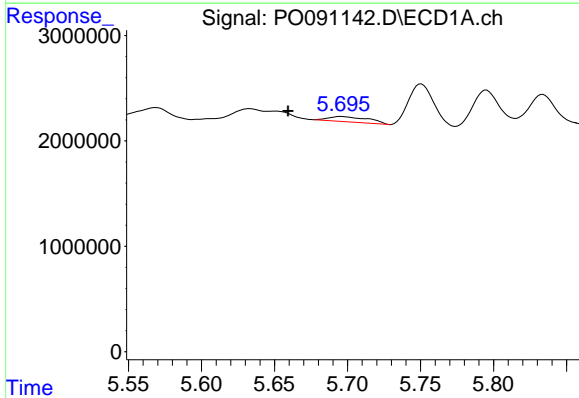
R.T.: 5.499 min
 Delta R.T.: 0.002 min
 Response: 6380747
 Conc: 85.39 ng/ml

Instrument :
 ECD_O
 ClientSampleId :



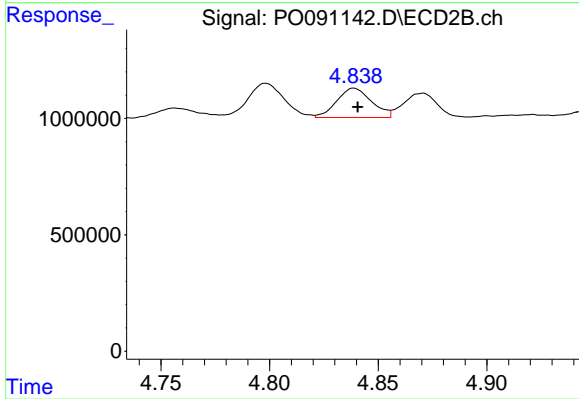
#13 AR-1232-3

R.T.: 4.756 min
 Delta R.T.: 0.000 min
 Response: 508774
 Conc: 40.19 ng/ml



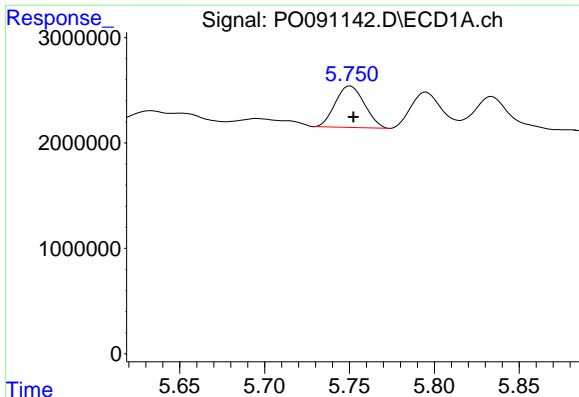
#14 AR-1232-4

R.T.: 5.695 min
 Delta R.T.: 0.036 min
 Response: 945078
 Conc: 25.22 ng/ml



#14 AR-1232-4

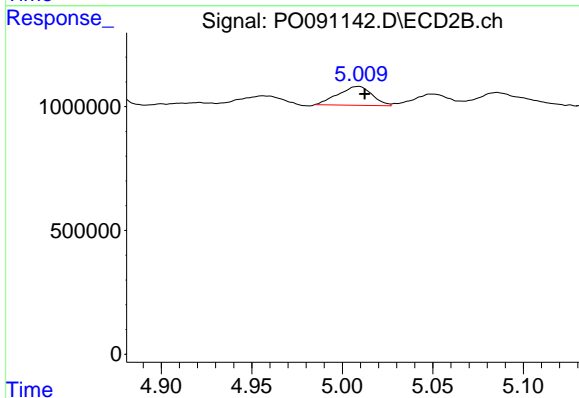
R.T.: 4.839 min
 Delta R.T.: -0.002 min
 Response: 1408780
 Conc: 116.55 ng/ml



#15 AR-1232-5

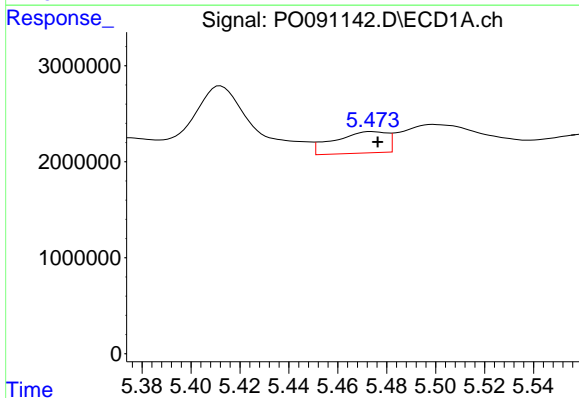
R.T.: 5.750 min
 Delta R.T.: -0.002 min
 Response: 4692377
 Conc: 156.92 ng/ml

Instrument :
 ECD_O
 ClientSampleId :



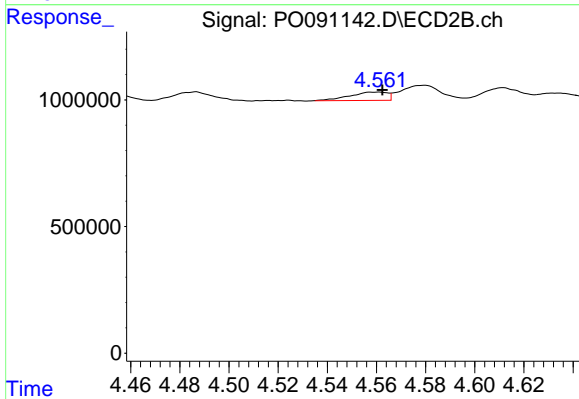
#15 AR-1232-5

R.T.: 5.009 min
 Delta R.T.: -0.003 min
 Response: 997405
 Conc: 73.74 ng/ml



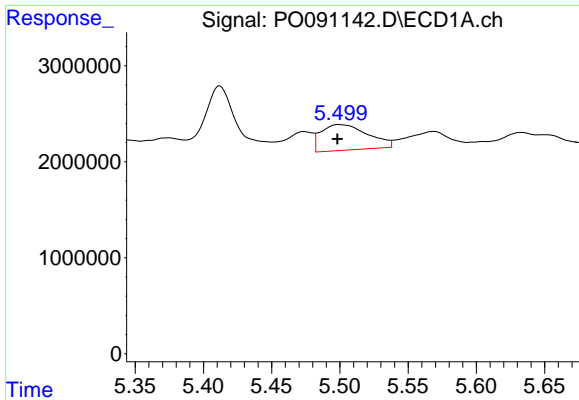
#16 AR-1242-1

R.T.: 5.474 min
 Delta R.T.: -0.002 min
 Response: 3348022
 Conc: 37.51 ng/ml



#16 AR-1242-1

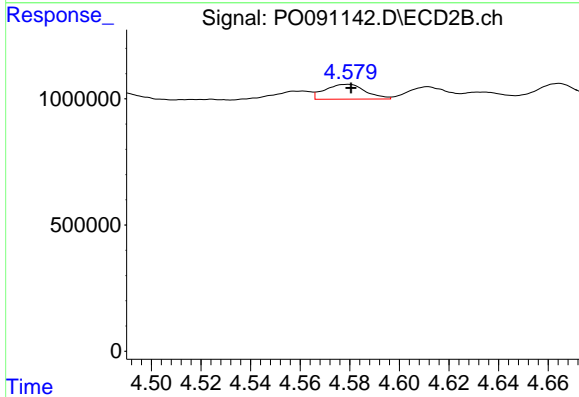
R.T.: 4.561 min
 Delta R.T.: -0.001 min
 Response: 349918
 Conc: 12.05 ng/ml



#17 AR-1242-2

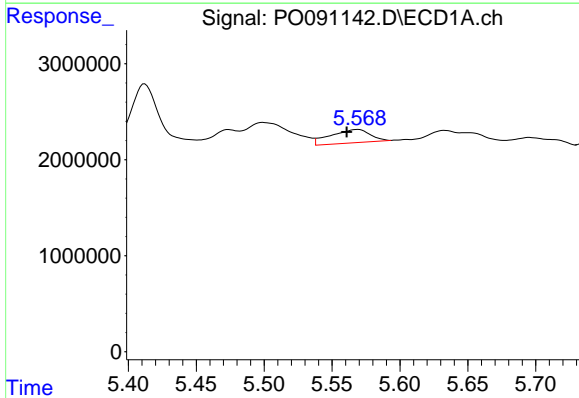
R.T.: 5.499 min
 Delta R.T.: 0.001 min
 Response: 6380747
 Conc: 50.25 ng/ml

Instrument :
 ECD_O
 ClientSampleId :



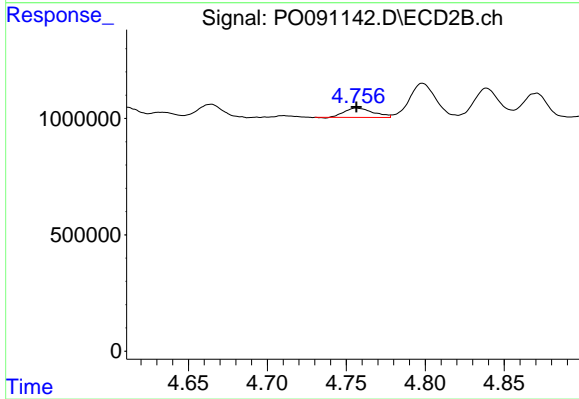
#17 AR-1242-2

R.T.: 4.580 min
 Delta R.T.: 0.000 min
 Response: 669336
 Conc: 16.60 ng/ml



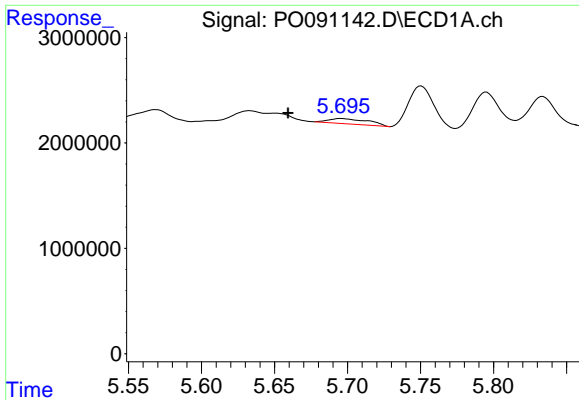
#18 AR-1242-3

R.T.: 5.569 min
 Delta R.T.: 0.008 min
 Response: 2805219
 Conc: 33.65 ng/ml



#18 AR-1242-3

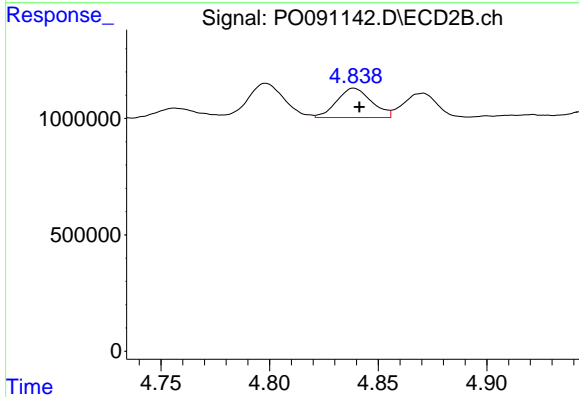
R.T.: 4.756 min
 Delta R.T.: 0.000 min
 Response: 508774
 Conc: 24.33 ng/ml



#19 AR-1242-4

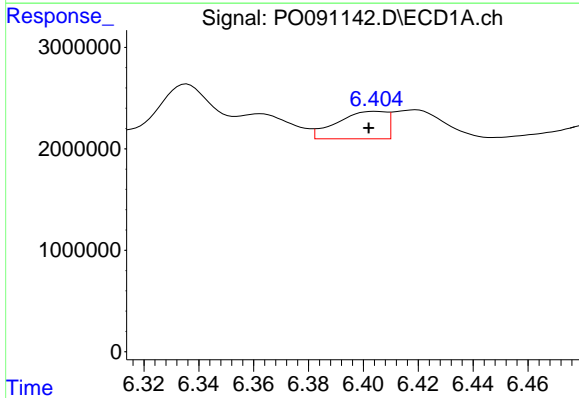
R.T.: 5.695 min
 Delta R.T.: 0.036 min
 Response: 945078
 Conc: 14.88 ng/ml

Instrument :
 ECD_O
 ClientSampleId :



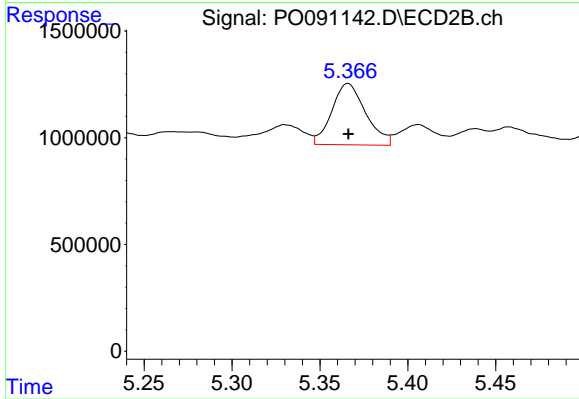
#19 AR-1242-4

R.T.: 4.839 min
 Delta R.T.: -0.003 min
 Response: 1408780
 Conc: 61.70 ng/ml



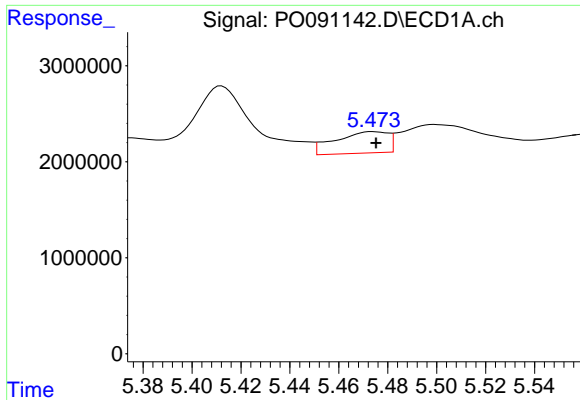
#20 AR-1242-5

R.T.: 6.405 min
 Delta R.T.: 0.003 min
 Response: 3392525
 Conc: 49.65 ng/ml



#20 AR-1242-5

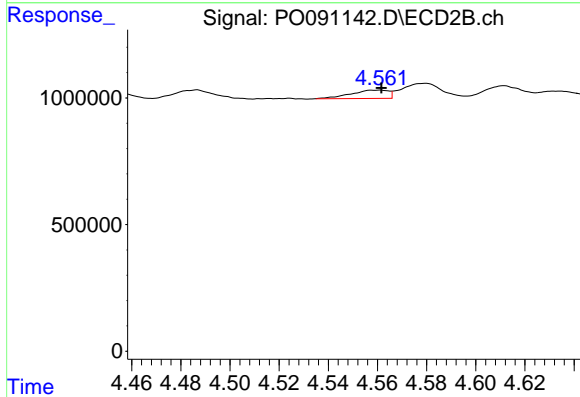
R.T.: 5.366 min
 Delta R.T.: 0.000 min
 Response: 3854644
 Conc: 136.62 ng/ml



#21 AR-1248-1

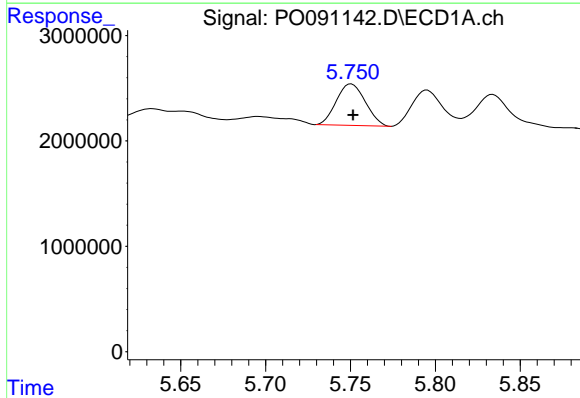
R.T.: 5.474 min
 Delta R.T.: -0.001 min
 Response: 3348022
 Conc: 47.00 ng/ml

Instrument :
 ECD_O
 ClientSampleId :



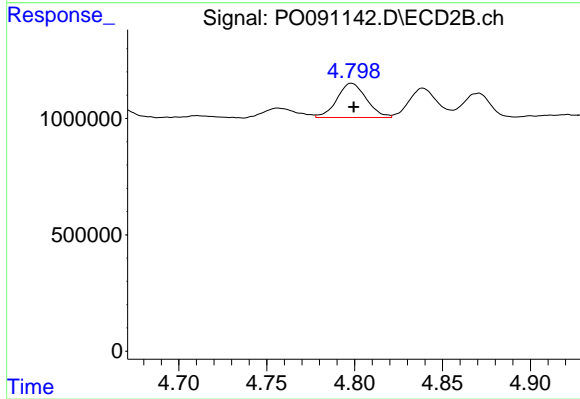
#21 AR-1248-1

R.T.: 4.561 min
 Delta R.T.: 0.000 min
 Response: 349918
 Conc: 14.87 ng/ml



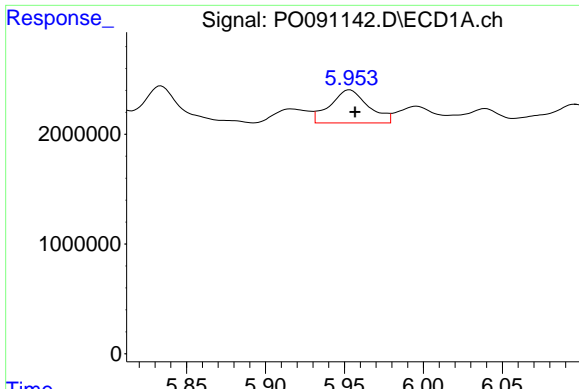
#22 AR-1248-2

R.T.: 5.750 min
 Delta R.T.: 0.000 min
 Response: 4692377
 Conc: 44.26 ng/ml



#22 AR-1248-2

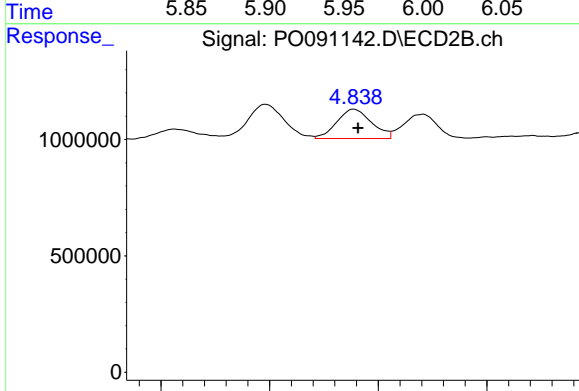
R.T.: 4.798 min
 Delta R.T.: -0.001 min
 Response: 1707501
 Conc: 52.15 ng/ml



#23 AR-1248-3

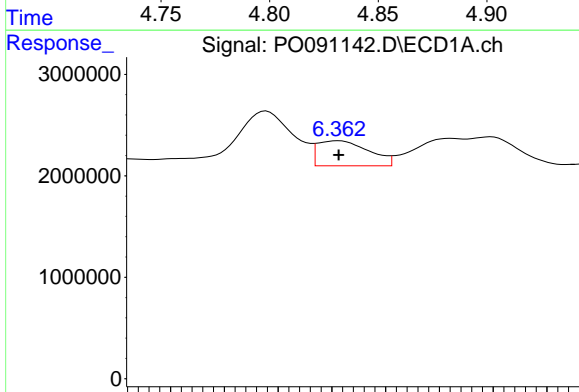
R.T.: 5.953 min
 Delta R.T.: -0.003 min
 Response: 5074098
 Conc: 43.12 ng/ml

Instrument :
 ECD_O
 ClientSampleId :



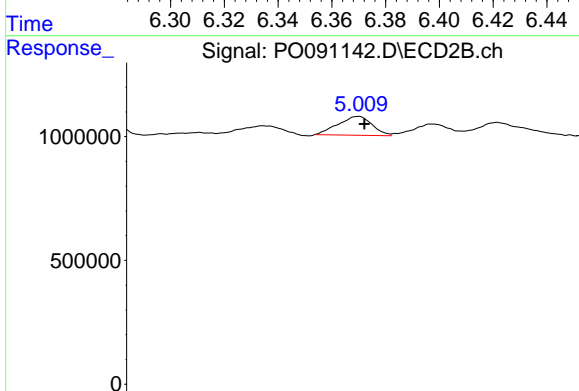
#23 AR-1248-3

R.T.: 4.839 min
 Delta R.T.: -0.002 min
 Response: 1408780
 Conc: 41.51 ng/ml



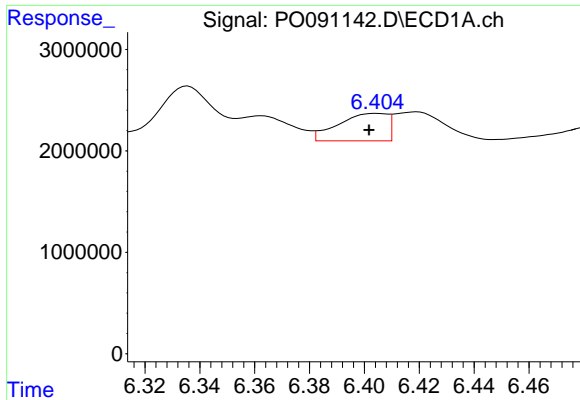
#24 AR-1248-4

R.T.: 6.362 min
 Delta R.T.: 0.000 min
 Response: 3264677
 Conc: 26.70 ng/ml



#24 AR-1248-4

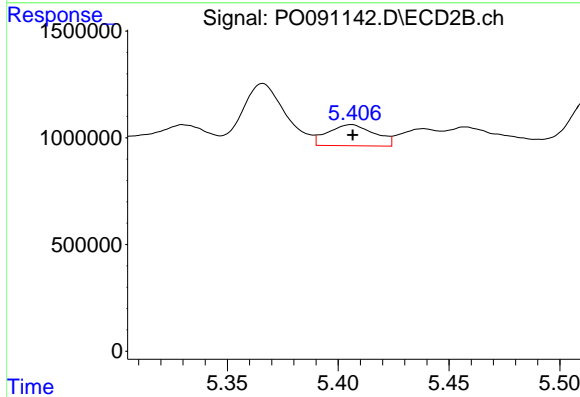
R.T.: 5.009 min
 Delta R.T.: -0.003 min
 Response: 997405
 Conc: 25.00 ng/ml



#25 AR-1248-5

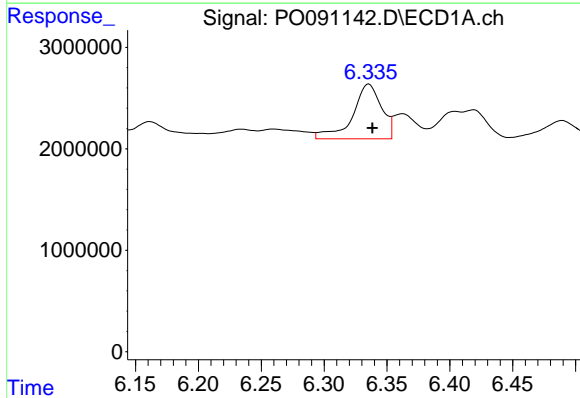
R.T.: 6.405 min
 Delta R.T.: 0.003 min
 Response: 3392525
 Conc: 29.58 ng/ml

Instrument :
 ECD_O
 ClientSampleId :



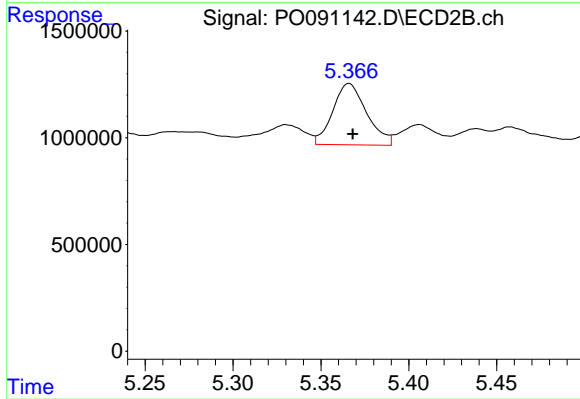
#25 AR-1248-5

R.T.: 5.406 min
 Delta R.T.: 0.000 min
 Response: 1447539
 Conc: 40.38 ng/ml



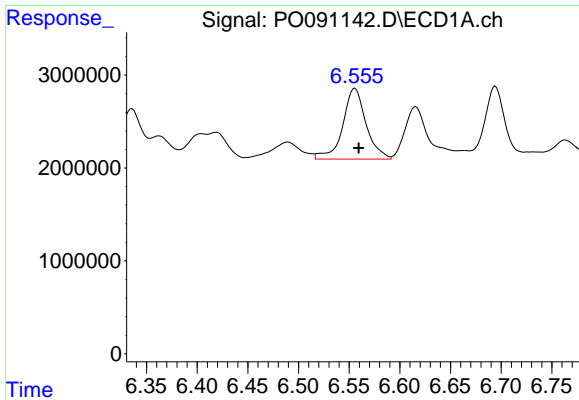
#26 AR-1254-1

R.T.: 6.336 min
 Delta R.T.: -0.003 min
 Response: 8612834
 Conc: 68.58 ng/ml



#26 AR-1254-1

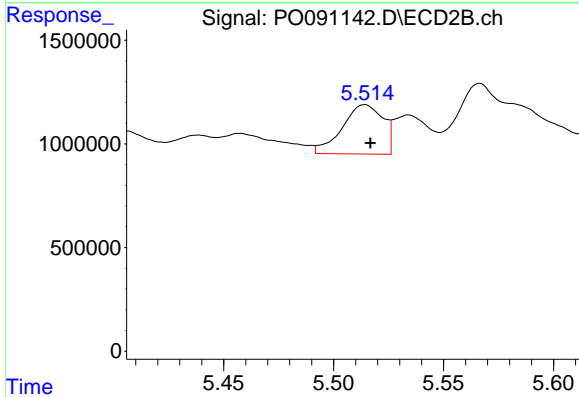
R.T.: 5.366 min
 Delta R.T.: -0.002 min
 Response: 3854644
 Conc: 65.77 ng/ml



#27 AR-1254-2

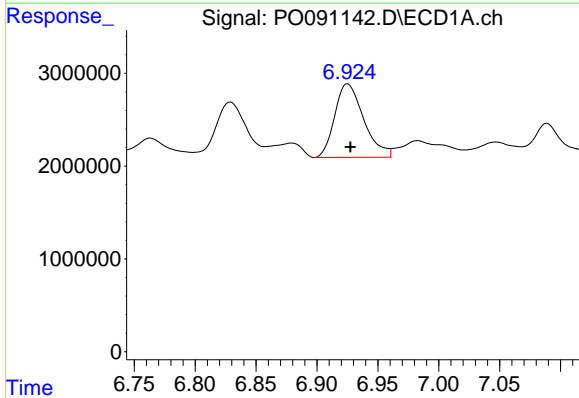
R.T.: 6.556 min
 Delta R.T.: -0.004 min
 Response: 12243137
 Conc: 64.93 ng/ml

Instrument :
 ECD_O
 ClientSampleId :



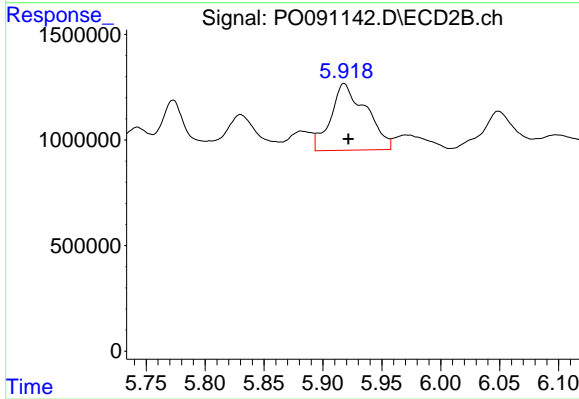
#27 AR-1254-2

R.T.: 5.514 min
 Delta R.T.: -0.003 min
 Response: 3086997
 Conc: 57.84 ng/ml



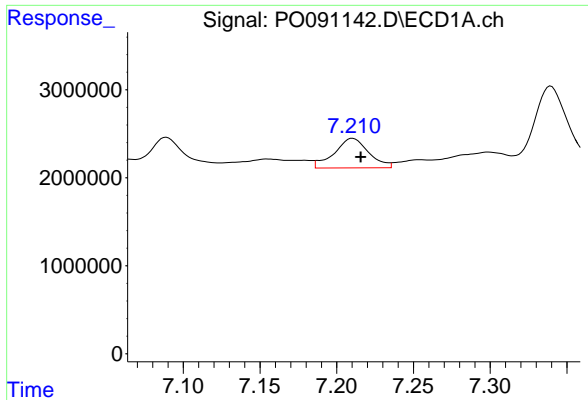
#28 AR-1254-3

R.T.: 6.925 min
 Delta R.T.: -0.002 min
 Response: 13141421
 Conc: 70.11 ng/ml



#28 AR-1254-3

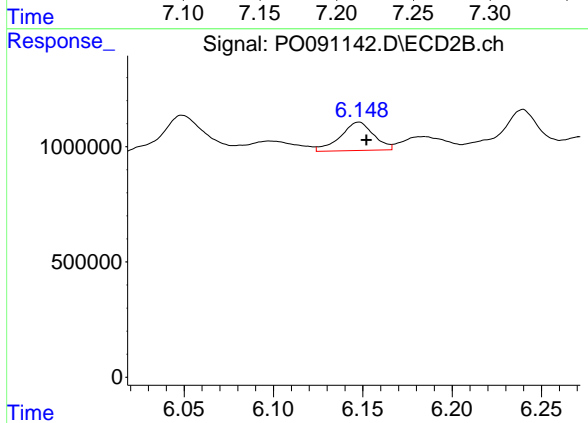
R.T.: 5.918 min
 Delta R.T.: -0.004 min
 Response: 6606139
 Conc: 81.09 ng/ml



#29 AR-1254-4

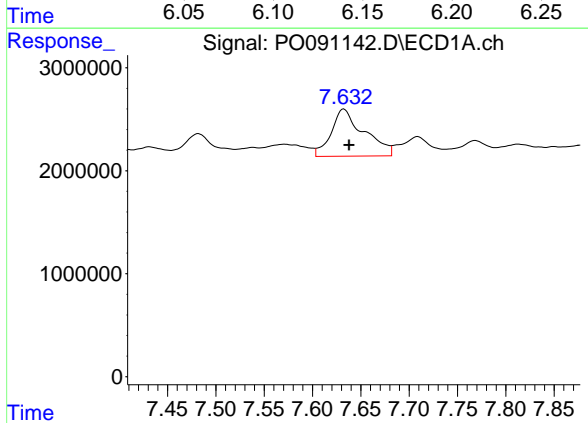
R.T.: 7.210 min
 Delta R.T.: -0.005 min
 Response: 5252161
 Conc: 38.02 ng/ml

Instrument :
 ECD_O
 ClientSampleId :



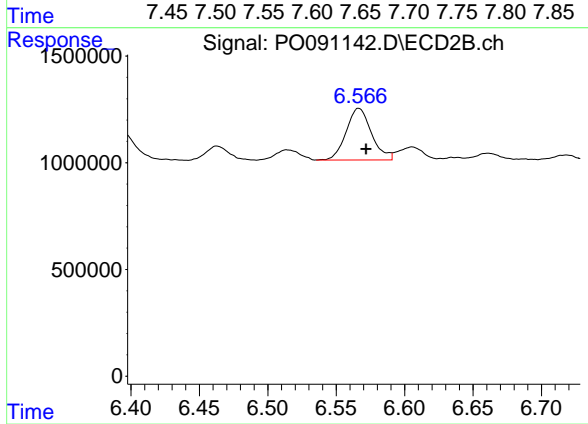
#29 AR-1254-4

R.T.: 6.148 min
 Delta R.T.: -0.004 min
 Response: 1603987
 Conc: 32.78 ng/ml



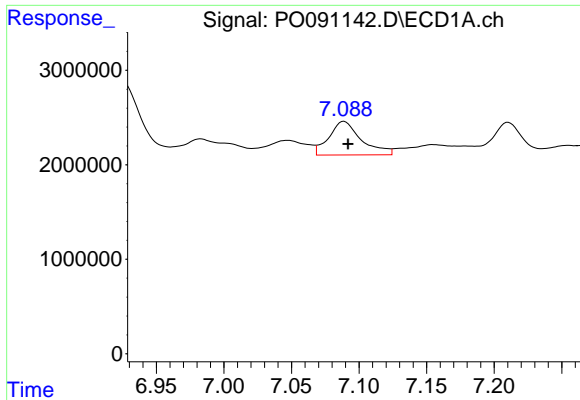
#30 AR-1254-5

R.T.: 7.632 min
 Delta R.T.: -0.005 min
 Response: 10850364
 Conc: 70.72 ng/ml



#30 AR-1254-5

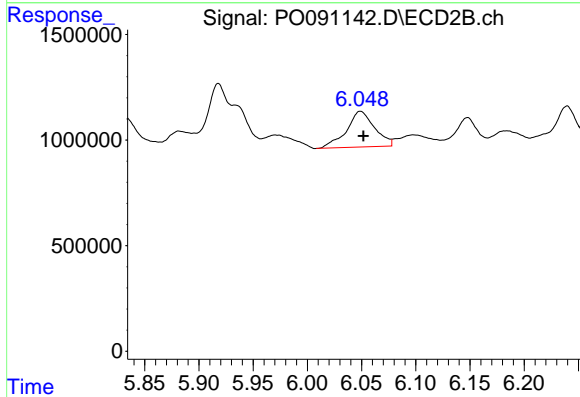
R.T.: 6.567 min
 Delta R.T.: -0.005 min
 Response: 3126703
 Conc: 41.94 ng/ml



#31 AR-1260-1

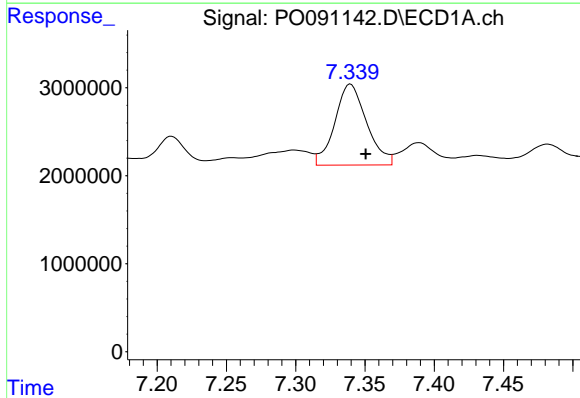
R.T.: 7.089 min
 Delta R.T.: -0.003 min
 Response: 5931104
 Conc: 38.66 ng/ml

Instrument :
 ECD_O
 ClientSampleId :



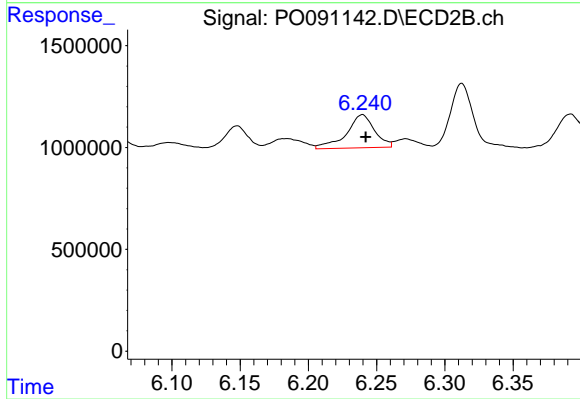
#31 AR-1260-1

R.T.: 6.049 min
 Delta R.T.: -0.003 min
 Response: 3057904
 Conc: 52.81 ng/ml



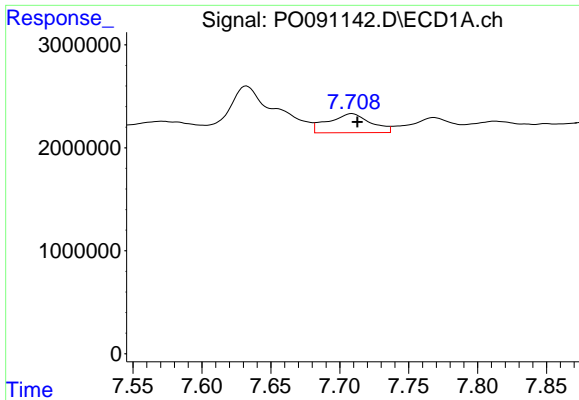
#32 AR-1260-2

R.T.: 7.340 min
 Delta R.T.: -0.011 min
 Response: 14727633
 Conc: 84.38 ng/ml



#32 AR-1260-2

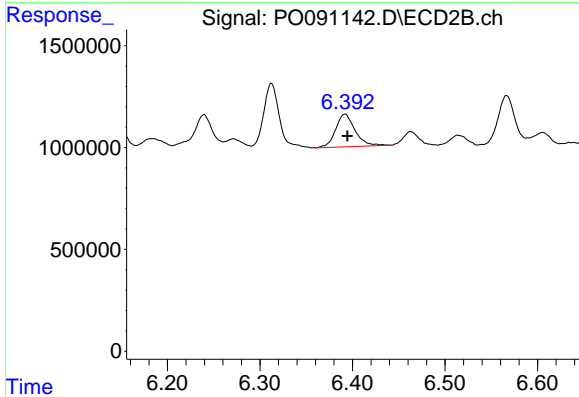
R.T.: 6.240 min
 Delta R.T.: -0.003 min
 Response: 2334672
 Conc: 34.19 ng/ml



#33 AR-1260-3

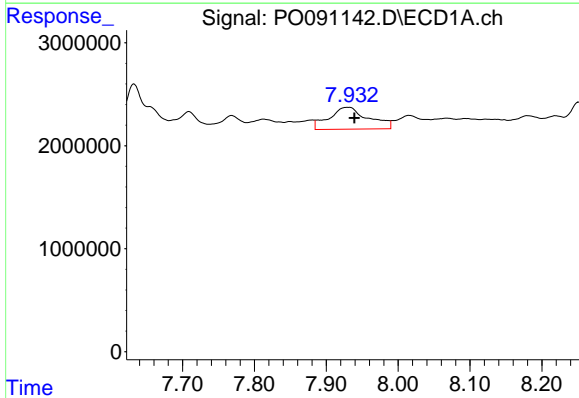
R.T.: 7.709 min
 Delta R.T.: -0.004 min
 Response: 3964991
 Conc: 34.88 ng/ml

Instrument :
 ECD_O
 ClientSampleId :



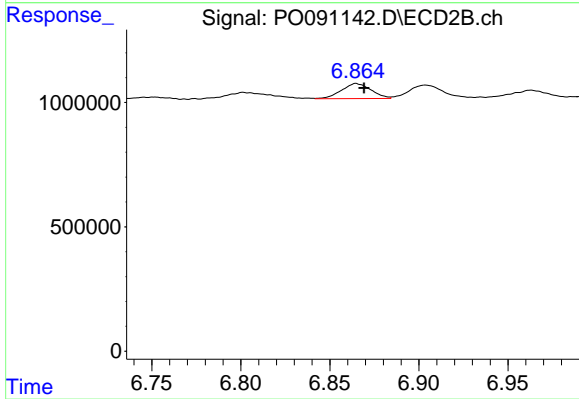
#33 AR-1260-3

R.T.: 6.392 min
 Delta R.T.: -0.002 min
 Response: 2344508
 Conc: 35.74 ng/ml



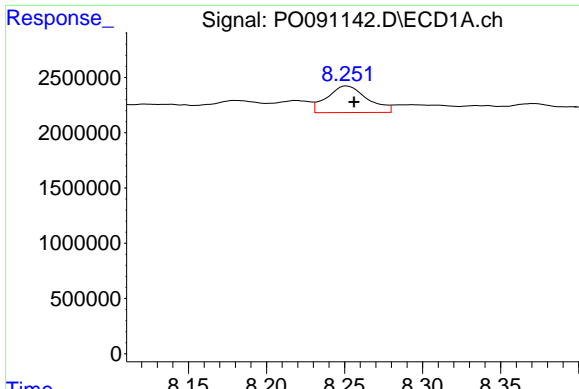
#34 AR-1260-4

R.T.: 7.931 min
 Delta R.T.: -0.007 min
 Response: 8061953
 Conc: 59.49 ng/ml



#34 AR-1260-4

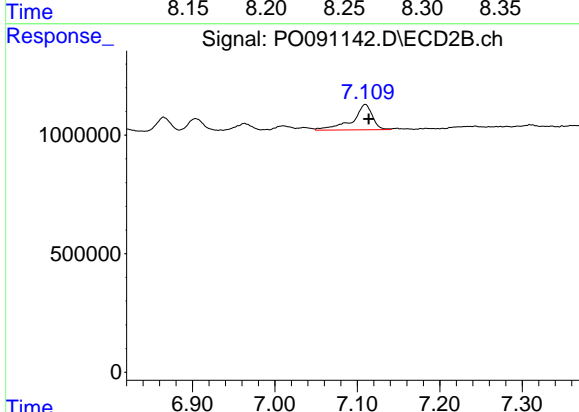
R.T.: 6.865 min
 Delta R.T.: -0.004 min
 Response: 709389
 Conc: 14.85 ng/ml



#35 AR-1260-5

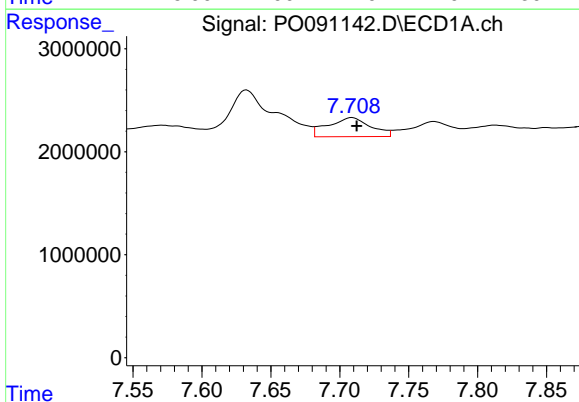
R.T.: 8.251 min
 Delta R.T.: -0.005 min
 Response: 4314070
 Conc: 16.98 ng/ml

Instrument :
 ECD_O
 ClientSampleId :



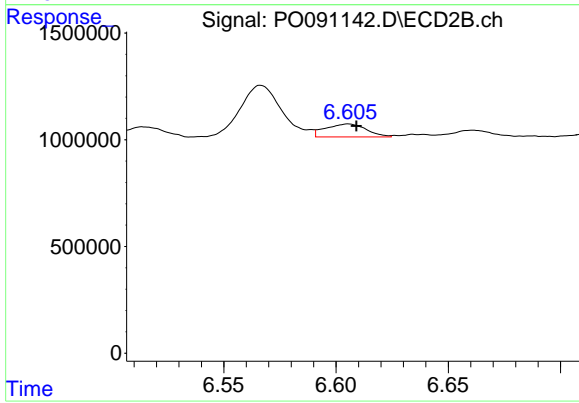
#35 AR-1260-5

R.T.: 7.110 min
 Delta R.T.: -0.004 min
 Response: 1806441
 Conc: 16.62 ng/ml



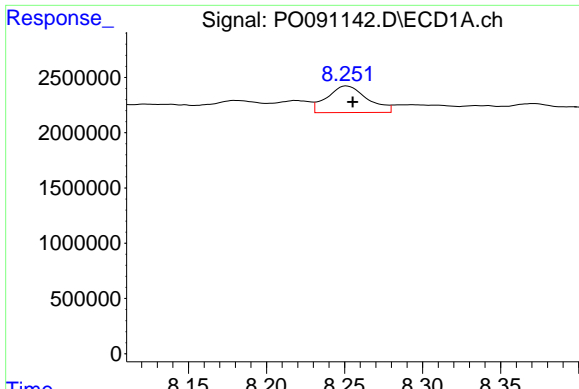
#36 AR-1262-1

R.T.: 7.709 min
 Delta R.T.: -0.004 min
 Response: 3964991
 Conc: 21.70 ng/ml



#36 AR-1262-1

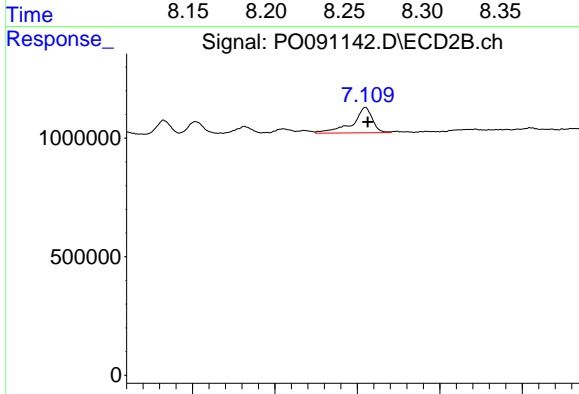
R.T.: 6.606 min
 Delta R.T.: -0.003 min
 Response: 764614
 Conc: 10.17 ng/ml



#37 AR-1262-2

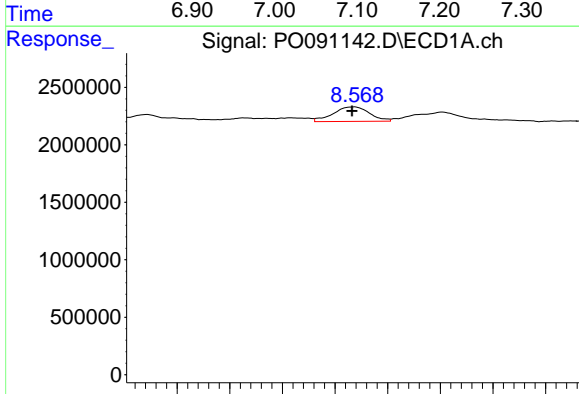
R.T.: 8.251 min
 Delta R.T.: -0.004 min
 Response: 4314070
 Conc: 13.95 ng/ml

Instrument :
 ECD_O
 ClientSampleId :



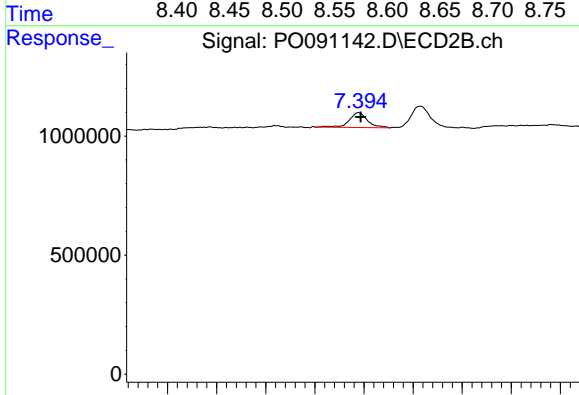
#37 AR-1262-2

R.T.: 7.110 min
 Delta R.T.: -0.003 min
 Response: 1806441
 Conc: 14.19 ng/ml



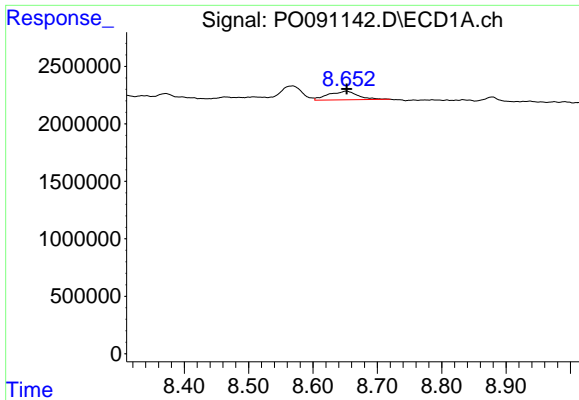
#38 AR-1262-3

R.T.: 8.569 min
 Delta R.T.: 0.003 min
 Response: 3042075
 Conc: 14.11 ng/ml



#38 AR-1262-3

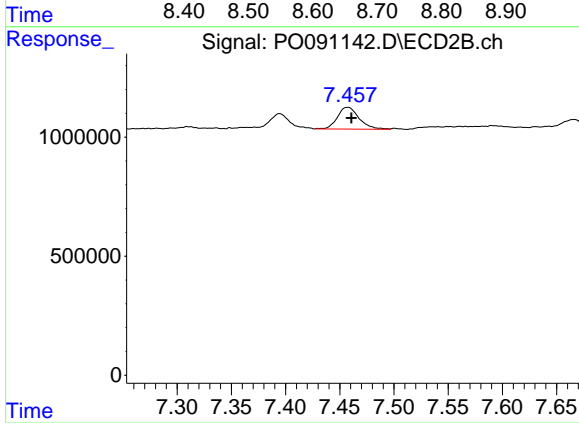
R.T.: 7.395 min
 Delta R.T.: -0.002 min
 Response: 811144
 Conc: 15.39 ng/ml



#39 AR-1262-4

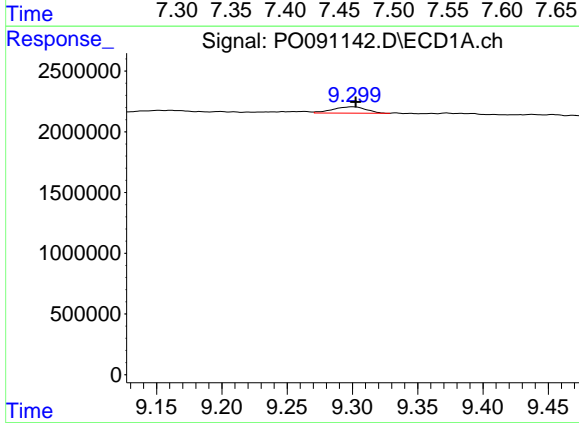
R.T.: 8.652 min
 Delta R.T.: 0.000 min
 Response: 2341662
 Conc: 23.52 ng/ml

Instrument :
 ECD_O
 ClientSampleId :



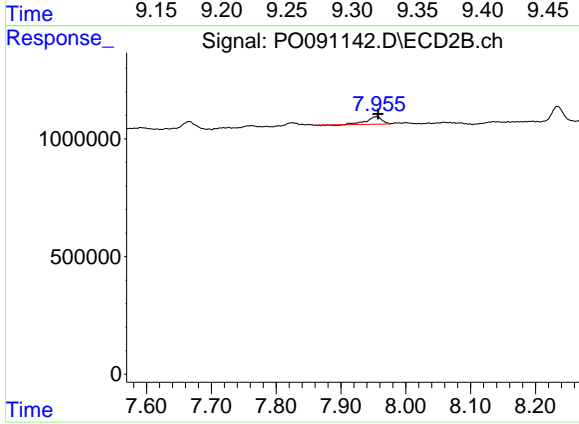
#39 AR-1262-4

R.T.: 7.457 min
 Delta R.T.: -0.003 min
 Response: 1278349
 Conc: 13.46 ng/ml



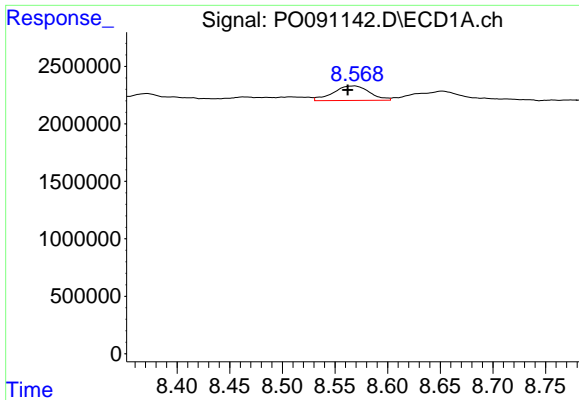
#40 AR-1262-5

R.T.: 9.300 min
 Delta R.T.: -0.002 min
 Response: 947892
 Conc: 8.21 ng/ml



#40 AR-1262-5

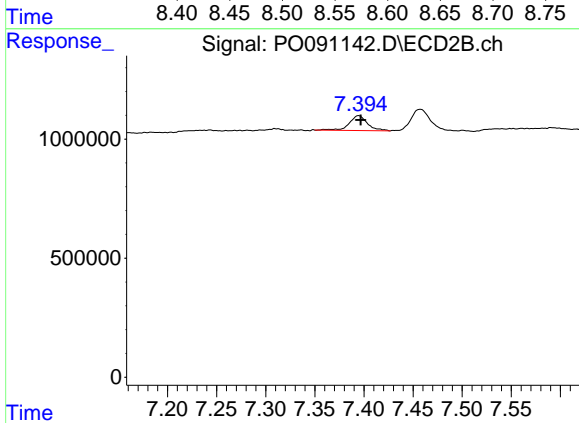
R.T.: 7.955 min
 Delta R.T.: -0.002 min
 Response: 518709
 Conc: 11.37 ng/ml



#41 AR-1268-1

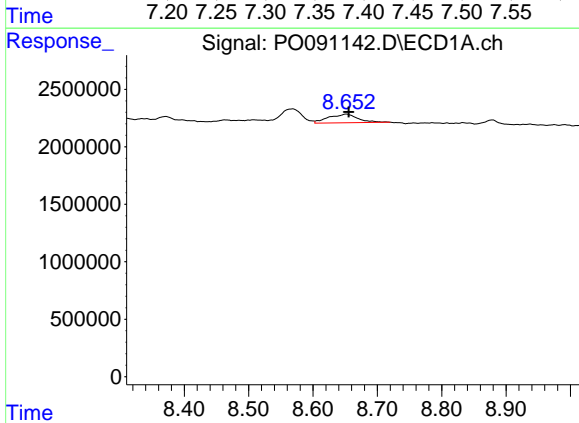
R.T.: 8.569 min
 Delta R.T.: 0.007 min
 Response: 3042075
 Conc: 8.26 ng/ml

Instrument :
 ECD_O
 ClientSampleId :



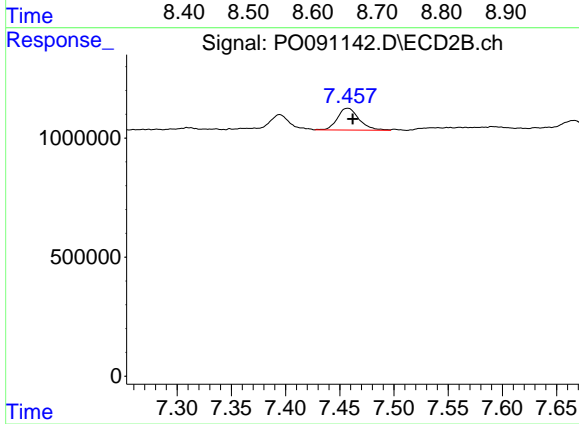
#41 AR-1268-1

R.T.: 7.395 min
 Delta R.T.: -0.002 min
 Response: 811144
 Conc: 5.44 ng/ml



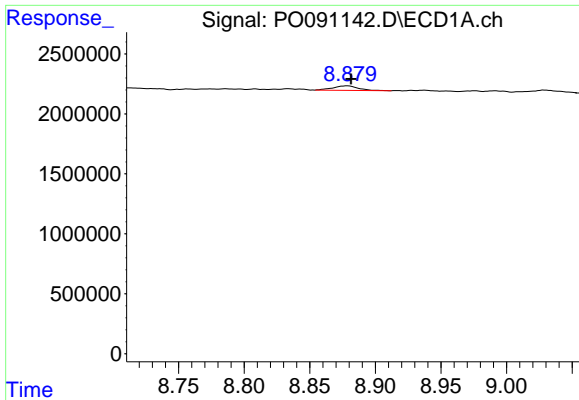
#42 AR-1268-2

R.T.: 8.652 min
 Delta R.T.: -0.003 min
 Response: 2341662
 Conc: 7.04 ng/ml



#42 AR-1268-2

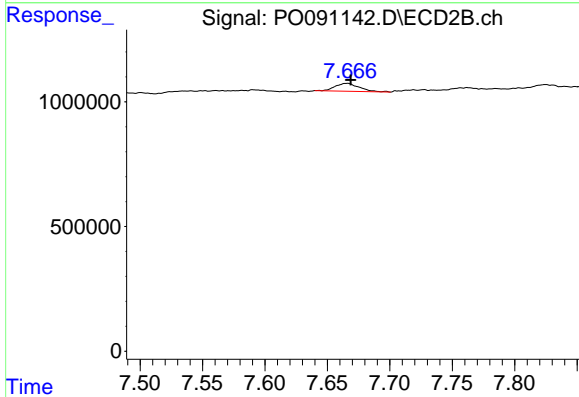
R.T.: 7.457 min
 Delta R.T.: -0.005 min
 Response: 1278349
 Conc: 9.51 ng/ml



#43 AR-1268-3

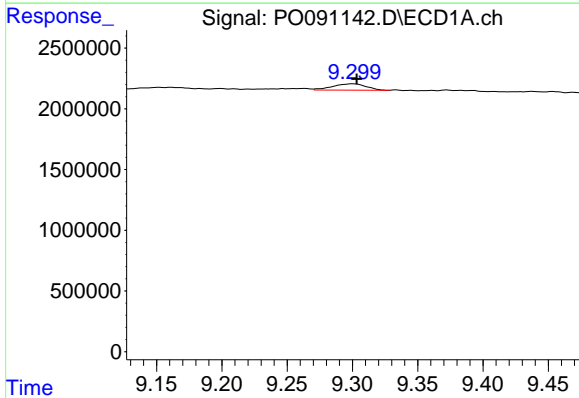
R.T.: 8.879 min
 Delta R.T.: -0.002 min
 Response: 510553
 Conc: 1.79 ng/ml

Instrument :
 ECD_O
 ClientSampleId :



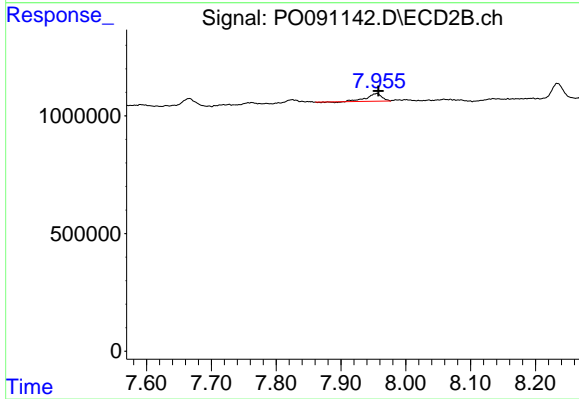
#43 AR-1268-3

R.T.: 7.666 min
 Delta R.T.: -0.003 min
 Response: 419904
 Conc: 3.64 ng/ml



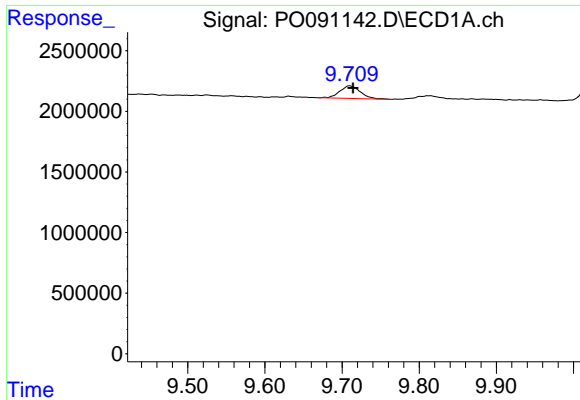
#44 AR-1268-4

R.T.: 9.300 min
 Delta R.T.: -0.003 min
 Response: 947892
 Conc: 7.68 ng/ml



#44 AR-1268-4

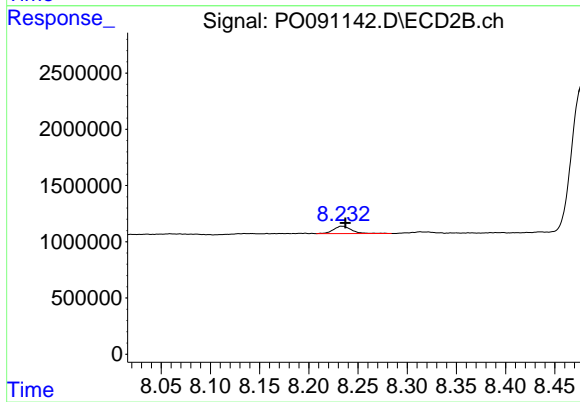
R.T.: 7.955 min
 Delta R.T.: -0.002 min
 Response: 518709
 Conc: 10.51 ng/ml



#45 AR-1268-5

R.T.: 9.710 min
Delta R.T.: -0.005 min
Response: 1924425
Conc: 2.11 ng/ml

Instrument :
ECD_O
ClientSampleId :



#45 AR-1268-5

R.T.: 8.234 min
Delta R.T.: -0.003 min
Response: 847545
Conc: 2.50 ng/ml