

Data Path : Z:\pestpcbsrv\HPCHEM1\ECD_0\Data\PO120922\
 Data File : PO091229.D
 Signal(s) : Signal #1: ECD1A.ch Signal #2: ECD2B.ch
 Acq On : 09 Dec 2022 18:16
 Operator : YP/AJ
 Sample : PB149505BL
 Misc :
 ALS Vial : 16 Sample Multiplier: 1

Instrument :
 ECD_0
ClientSampleId :
 PB149505BL

Integration File signal 1: autoint1.e
 Integration File signal 2: autoint2.e
 Quant Time: Dec 10 00:05:28 2022
 Quant Method : Z:\pestpcbsrv\HPCHEM1\ECD_0\methods\PO112522.M
 Quant Title : GC EXTRACTABLES
 QLast Update : Mon Nov 28 11:25:59 2022
 Response via : Initial Calibration
 Integrator: ChemStation

Volume Inj. : 2 µl
 Signal #1 Phase : ZB-MR1 Signal #2 Phase: ZB-MR2
 Signal #1 Info : 30Mx0.32mmx 0.50µ Signal #2 Info : 30M x 0.32mm x 0.25µm

Compound	RT#1	RT#2	Resp#1	Resp#2	ng/ml	ng/ml

System Monitoring Compounds						
1) SA Tetrachlo...	4.297	3.474	65007264	21668316	19.227	20.645
2) SA Decachlor...	10.044	8.474	50602793	21396782	19.051	22.039

Target Compounds

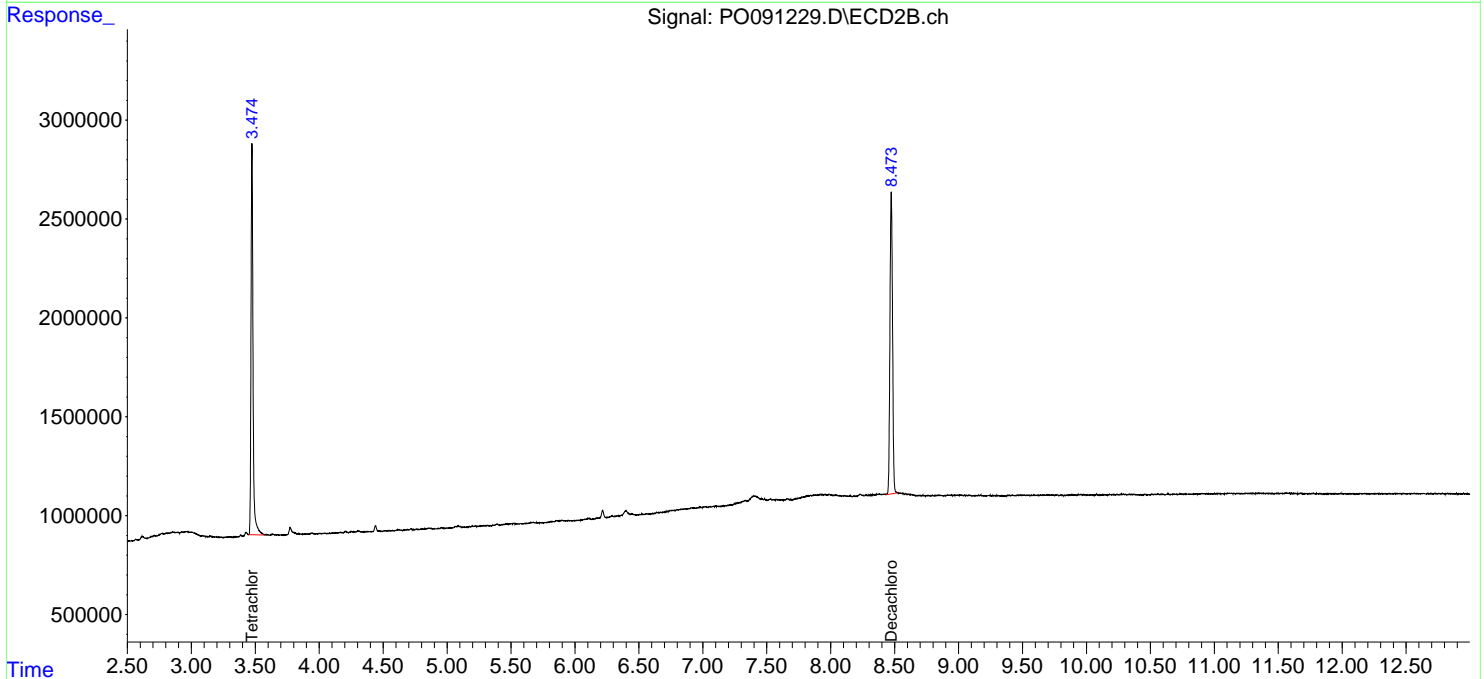
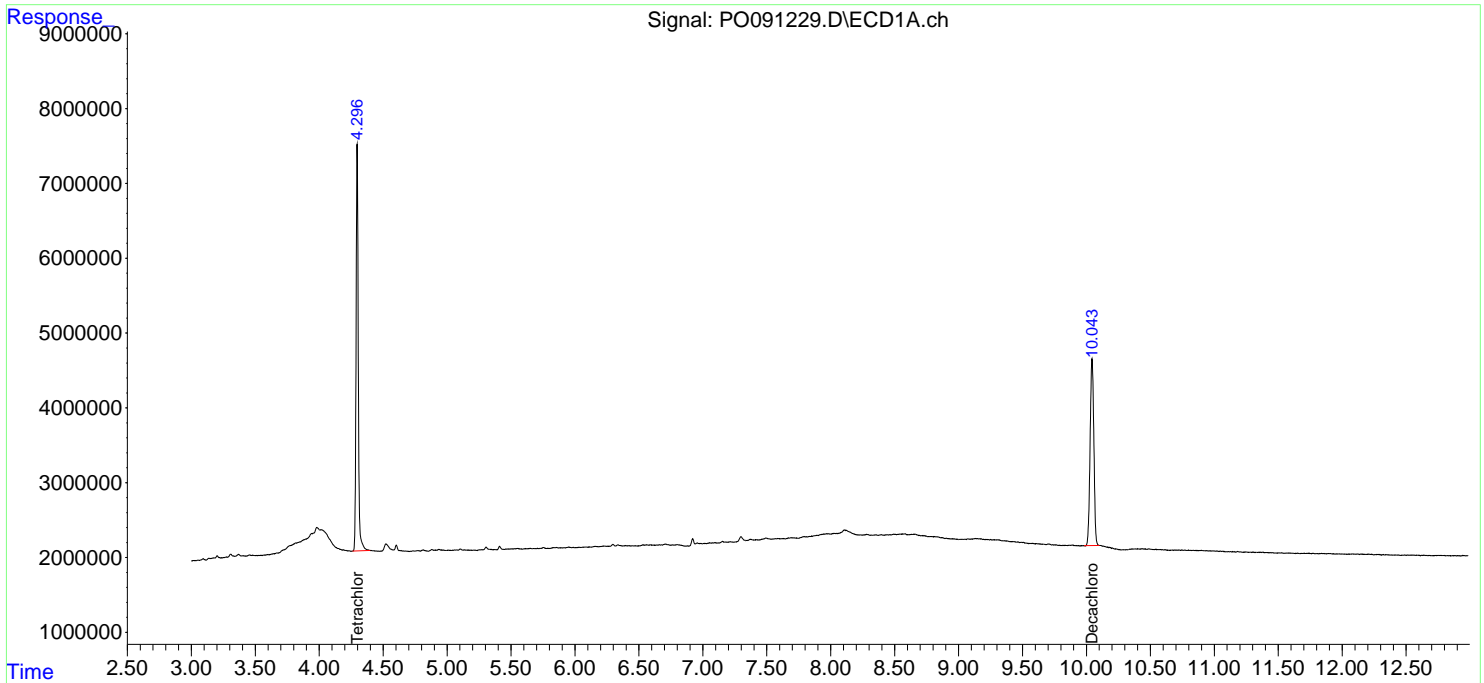
 (f)=RT Delta > 1/2 Window (#)=Amounts differ by > 25% (m)=manual int.

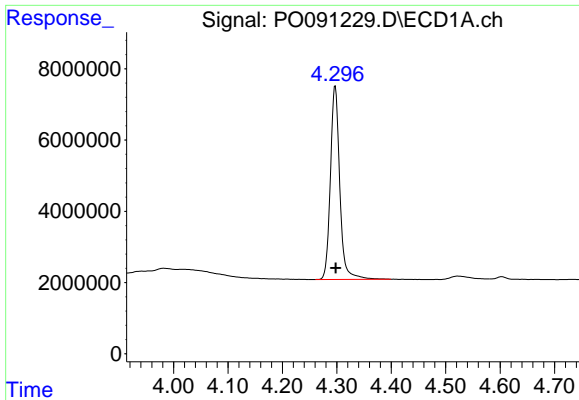
Data Path : Z:\pestpcbsrv\HPCHEM1\ECD_O\Data\PO120922\
 Data File : PO091229.D
 Signal(s) : Signal #1: ECD1A.ch Signal #2: ECD2B.ch
 Acq On : 09 Dec 2022 18:16
 Operator : YP/AJ
 Sample : PB149505BL
 Misc :
 ALS Vial : 16 Sample Multiplier: 1

Instrument :
 ECD_O
 ClientSampleId :
 PB149505BL

Integration File signal 1: autoint1.e
 Integration File signal 2: autoint2.e
 Quant Time: Dec 10 00:05:28 2022
 Quant Method : Z:\pestpcbsrv\HPCHEM1\ECD_O\methods\PO112522.M
 Quant Title : GC EXTRACTABLES
 QLast Update : Mon Nov 28 11:25:59 2022
 Response via : Initial Calibration
 Integrator: ChemStation

Volume Inj. : 2 µl
 Signal #1 Phase : ZB-MR1 Signal #2 Phase: ZB-MR2
 Signal #1 Info : 30Mx0.32mmx 0.50µ Signal #2 Info : 30M x 0.32mm x 0.25µm

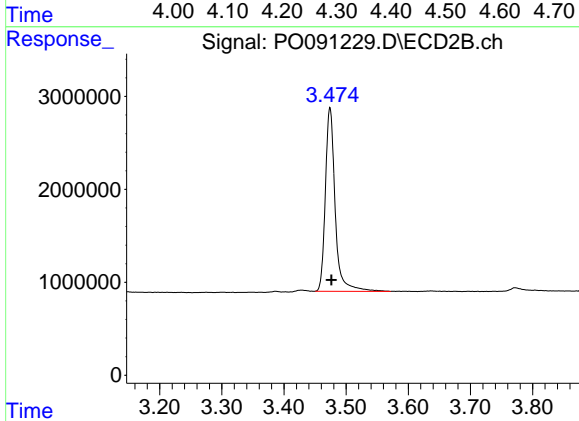




#1 Tetrachloro-m-xylene

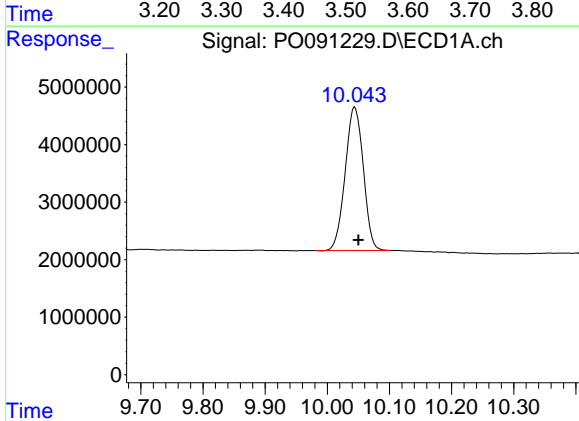
R.T.: 4.297 min
 Delta R.T.: -0.001 min
 Response: 65007264
 Conc: 19.23 ng/ml

Instrument :
 ECD_O
 ClientSampleId :
 PB149505BL



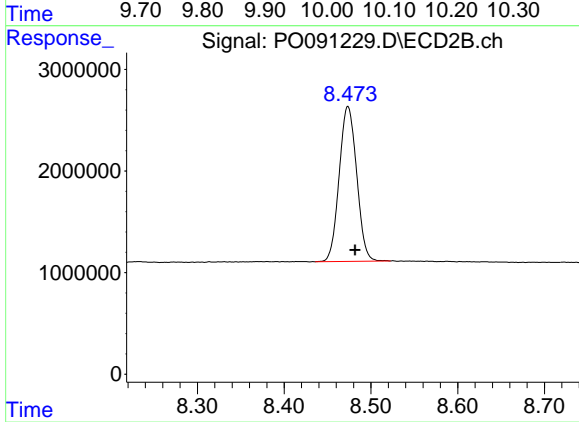
#1 Tetrachloro-m-xylene

R.T.: 3.474 min
 Delta R.T.: -0.002 min
 Response: 21668316
 Conc: 20.65 ng/ml



#2 Decachlorobiphenyl

R.T.: 10.044 min
 Delta R.T.: -0.006 min
 Response: 50602793
 Conc: 19.05 ng/ml



#2 Decachlorobiphenyl

R.T.: 8.474 min
 Delta R.T.: -0.008 min
 Response: 21396782
 Conc: 22.04 ng/ml