

Data Path : Z:\pestpcbsrv\HPCHEM1\ECD_0\Data\PO120922\
 Data File : PO091234.D
 Signal(s) : Signal #1: ECD1A.ch Signal #2: ECD2B.ch
 Acq On : 09 Dec 2022 19:40
 Operator : YP/AJ
 Sample : N5947-03
 Misc :
 ALS Vial : 21 Sample Multiplier: 1

Instrument :
 ECD_0
 ClientSampleId :
 NYE-WATER-1208

Integration File signal 1: autoint1.e
 Integration File signal 2: autoint2.e
 Quant Time: Dec 10 00:08:16 2022
 Quant Method : Z:\pestpcbsrv\HPCHEM1\ECD_0\methods\PO112522.M
 Quant Title : GC EXTRACTABLES
 QLast Update : Mon Nov 28 11:25:59 2022
 Response via : Initial Calibration
 Integrator: ChemStation

Volume Inj. : 2 µl
 Signal #1 Phase : ZB-MR1 Signal #2 Phase: ZB-MR2
 Signal #1 Info : 30Mx0.32mmx 0.50µ Signal #2 Info : 30M x 0.32mm x 0.25µm

Compound	RT#1	RT#2	Resp#1	Resp#2	ng/ml	ng/ml

System Monitoring Compounds						
1) SA Tetrachlo...	4.297	3.474	60786061	20401957	17.978	19.439
2) SA Decachlor...	10.043	8.474	29108356	11934128	10.959	12.292

Target Compounds

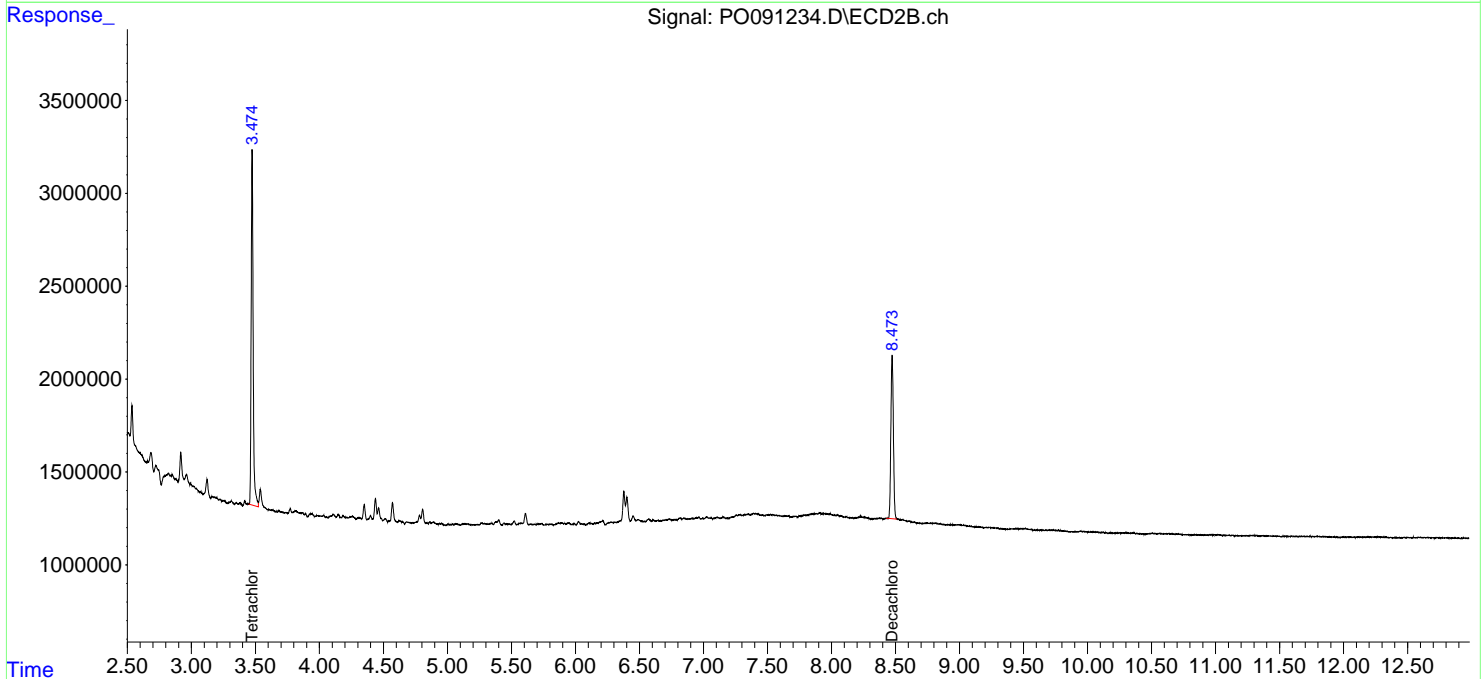
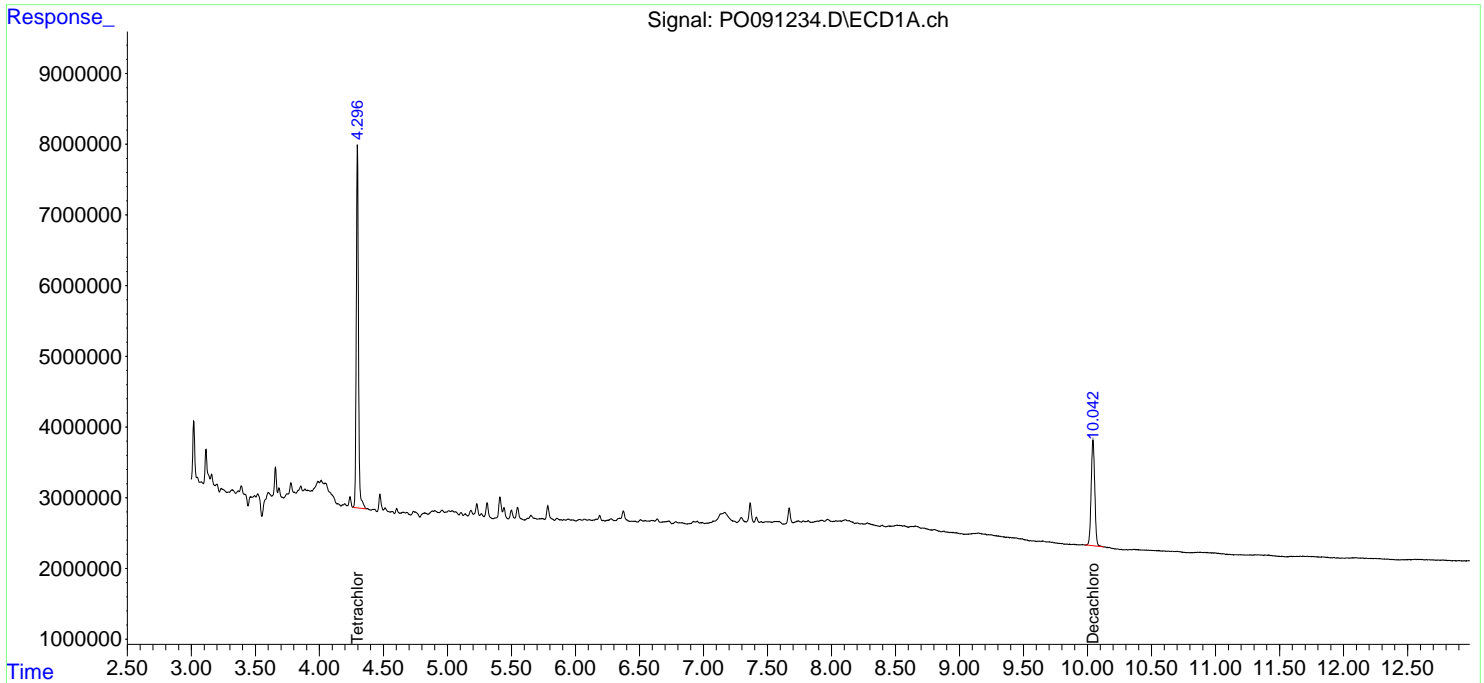
(f)=RT Delta > 1/2 Window (#)=Amounts differ by > 25% (m)=manual int.

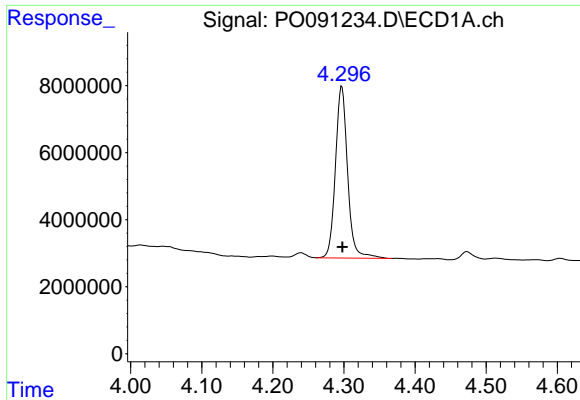
Data Path : Z:\pestpcbsrv\HPCHEM1\ECD_O\Data\PO120922\
 Data File : PO091234.D
 Signal(s) : Signal #1: ECD1A.ch Signal #2: ECD2B.ch
 Acq On : 09 Dec 2022 19:40
 Operator : YP/AJ
 Sample : N5947-03
 Misc :
 ALS Vial : 21 Sample Multiplier: 1

Instrument :
 ECD_O
ClientSampleId :
 NYE-WATER-1208

Integration File signal 1: autoint1.e
 Integration File signal 2: autoint2.e
 Quant Time: Dec 10 00:08:16 2022
 Quant Method : Z:\pestpcbsrv\HPCHEM1\ECD_O\methods\PO112522.M
 Quant Title : GC EXTRACTABLES
 QLast Update : Mon Nov 28 11:25:59 2022
 Response via : Initial Calibration
 Integrator: ChemStation

Volume Inj. : 2 µl
 Signal #1 Phase : ZB-MR1 Signal #2 Phase: ZB-MR2
 Signal #1 Info : 30Mx0.32mmx 0.50µm Signal #2 Info : 30M x 0.32mm x 0.25µm





#1 Tetrachloro-m-xylene

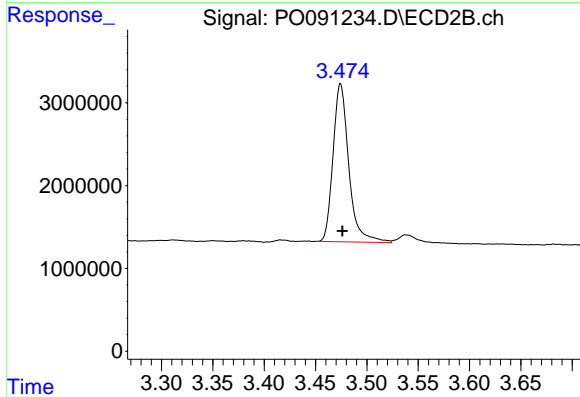
R.T.: 4.297 min

Delta R.T.: -0.001 min

Response: 60786061

Conc: 17.98 ng/ml

Instrument :
ECD_O
ClientSampleId :
NYE-WATER-1208



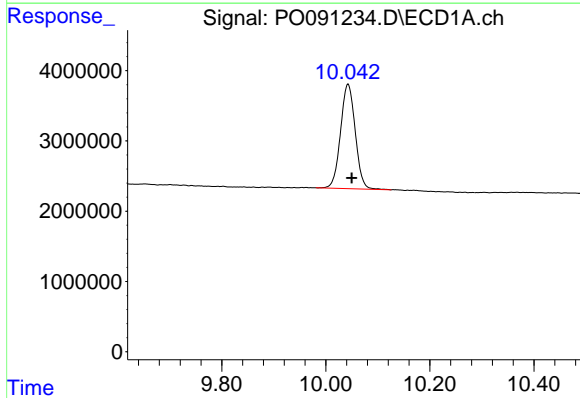
#1 Tetrachloro-m-xylene

R.T.: 3.474 min

Delta R.T.: -0.002 min

Response: 20401957

Conc: 19.44 ng/ml



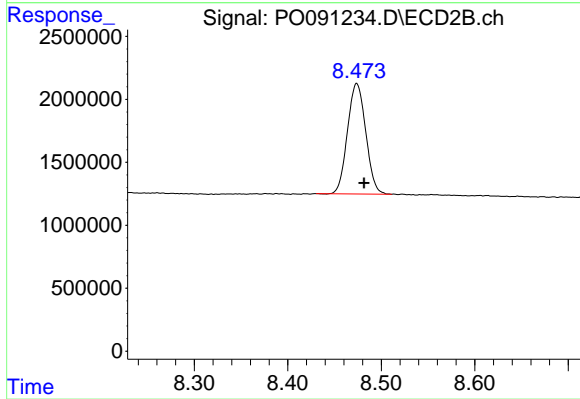
#2 Decachlorobiphenyl

R.T.: 10.043 min

Delta R.T.: -0.007 min

Response: 29108356

Conc: 10.96 ng/ml



#2 Decachlorobiphenyl

R.T.: 8.474 min

Delta R.T.: -0.008 min

Response: 11934128

Conc: 12.29 ng/ml