

Data Path : Z:\pestpcbsrv\HPCHEM1\ECD\_0\Data\PO120924\  
 Data File : PO108405.D  
 Signal(s) : Signal #1: ECD1A.ch Signal #2: ECD2B.ch  
 Acq On : 09 Dec 2024 12:54  
 Operator : YP/AJ  
 Sample : P5159-01  
 Misc :  
 ALS Vial : 11 Sample Multiplier: 1

Instrument :  
 ECD\_0  
 ClientSampleId :

Integration File signal 1: autoint1.e  
 Integration File signal 2: autoint2.e  
 Quant Time: Dec 10 01:35:18 2024  
 Quant Method : Z:\pestpcbsrv\HPCHEM1\ECD\_0\methods\PO120624.M  
 Quant Title : GC EXTRACTABLES  
 QLast Update : Sat Dec 07 05:58:15 2024  
 Response via : Initial Calibration  
 Integrator: ChemStation

Volume Inj. : 2 µl  
 Signal #1 Phase : ZB-MR1 Signal #2 Phase: ZB-MR2  
 Signal #1 Info : 30Mx0.32mmx 0.50µ Signal #2 Info : 30M x 0.32mm x 0.25µm

Compound	RT#1	RT#2	Resp#1	Resp#2	ng/ml	ng/ml
System Monitoring Compounds						
1) SA Tetrachlo...	3.709	3.708	143.9E6	81860969	16.541	16.148
2) SA Decachlor...	8.788	8.739	72694432	42668953	9.953	11.012
Target Compounds						
3) L1 AR-1016-1	4.821	4.809	2403441	2153887	7.792	13.422 #
4) L1 AR-1016-2	4.821	4.809	2403441	2153887	5.758	9.698 #
5) L1 AR-1016-3	4.873	4.997	693056	2561805	2.368	20.359 #
6) L1 AR-1016-4	5.005	5.040	2169078	2351400	9.383	22.436 #
7) L1 AR-1016-5	5.256	5.241	10374378	5031340	41.222	37.211
8) L2 AR-1221-1	3.939	3.908	17184197	255287	151.879	4.109 #
9) L2 AR-1221-2	4.008	4.003	17776280	9856672	204.984	207.750
10) L2 AR-1221-3	4.092	4.087	3210219	1459927	12.628	10.385
11) L3 AR-1232-1	4.092	4.087	3210219	1459927	15.677	13.029
12) L3 AR-1232-2	4.577	4.809	1386785	2153887	12.127	20.367 #
13) L3 AR-1232-3	4.821	4.997	2403441	2561805	12.171	42.451 #
14) L3 AR-1232-4	5.005	5.085	2169078	3249342	20.014	58.487 #
15) L3 AR-1232-5	5.052	5.241	2885908	5031340	36.843	87.386 #
16) L4 AR-1242-1	4.821	4.809	2403441	2153887	9.340	15.864 #
17) L4 AR-1242-2	4.821	4.809	2403441	2153887	6.963	11.614 #
18) L4 AR-1242-3	4.873	4.997	693056	2561805	2.873	24.310 #
19) L4 AR-1242-4	5.005	5.085	2169078	3249342	11.373	30.275 #
20) L4 AR-1242-5	5.676	5.606	9966729	3232822	47.993	25.576 #
21) L5 AR-1248-1	4.821	4.809	2403441	2153887	12.001	20.490 #
22) L5 AR-1248-2	5.052	5.040	2885908	2351400	10.411	15.747 #
23) L5 AR-1248-3	5.256	5.085	10374378	3249342	30.423	20.512 #
24) L5 AR-1248-4	5.626	5.241	6350476	5031340	13.327	27.561 #
25) L5 AR-1248-5	5.676	5.659	9966729	5518479	29.434	31.426
26) L6 AR-1254-1	5.626	5.606	6350476	3232822	12.364	11.937
27) L6 AR-1254-2	5.768	5.747	4996821	2512602	10.971	10.468
28) L6 AR-1254-3	6.175	6.172	5274190	5235104	7.324	13.941 #
29) L6 AR-1254-4	6.402	6.371	1974204	846324	4.499	3.888
30) L6 AR-1254-5	6.825	6.798	7004313	3420268	11.028	10.597
31) L7 AR-1260-1	6.313	6.286	6231949	2936038	13.632	12.545
32) L7 AR-1260-2	6.497	6.472	3540373	1536221	6.371	5.475
33) L7 AR-1260-3	6.888	6.622	373049	1628645	0.805	6.179 #
34) L7 AR-1260-4	7.127	7.096	2483698	1245522	5.839	5.854
35) L7 AR-1260-5	7.360	7.328	4291871	2223616	4.416	4.595
36) L8 AR-1262-1	6.888	6.798f	373049	3420268	0.567	10.120 #
37) L8 AR-1262-2	7.360	7.328	4291871	2223616	3.861	3.888
38) L8 AR-1262-3	7.656	7.629	662684	160656	1.517	0.716 #
39) L8 AR-1262-4	7.724	7.690	1749813	935727	2.170	2.285
40) L8 AR-1262-5	8.206	8.168	1315402	615333	3.706	3.329
41) L9 AR-1268-1	7.656	7.629	662684	160656	0.533	0.249 #

Data Path : Z:\pestpcbsrv\HPCHEM1\ECD\_0\Data\PO120924\  
 Data File : PO108405.D  
 Signal(s) : Signal #1: ECD1A.ch Signal #2: ECD2B.ch  
 Acq On : 09 Dec 2024 12:54  
 Operator : YP/AJ  
 Sample : P5159-01  
 Misc :  
 ALS Vial : 11 Sample Multiplier: 1

Instrument :  
 ECD\_0  
 ClientSampleId :

Integration File signal 1: autoint1.e  
 Integration File signal 2: autoint2.e  
 Quant Time: Dec 10 01:35:18 2024  
 Quant Method : Z:\pestpcbsrv\HPCHEM1\ECD\_0\methods\PO120624.M  
 Quant Title : GC EXTRACTABLES  
 QLast Update : Sat Dec 07 05:58:15 2024  
 Response via : Initial Calibration  
 Integrator: ChemStation

Volume Inj. : 2 µl  
 Signal #1 Phase : ZB-MR1 Signal #2 Phase: ZB-MR2  
 Signal #1 Info : 30Mx0.32mmx 0.50µ Signal #2 Info : 30M x 0.32mm x 0.25µm

	Compound	RT#1	RT#2	Resp#1	Resp#2	ng/ml	ng/ml
42)	L9 AR-1268-2	7.724	7.690	1749813	935727	1.560	1.609
43)	L9 AR-1268-3	7.930	7.893	567665	325724	0.626	0.653
44)	L9 AR-1268-4	8.206	8.168	1315402	615333	3.400	3.031
45)	L9 AR-1268-5	8.517	8.486	32950	439583	0.012	0.296 #

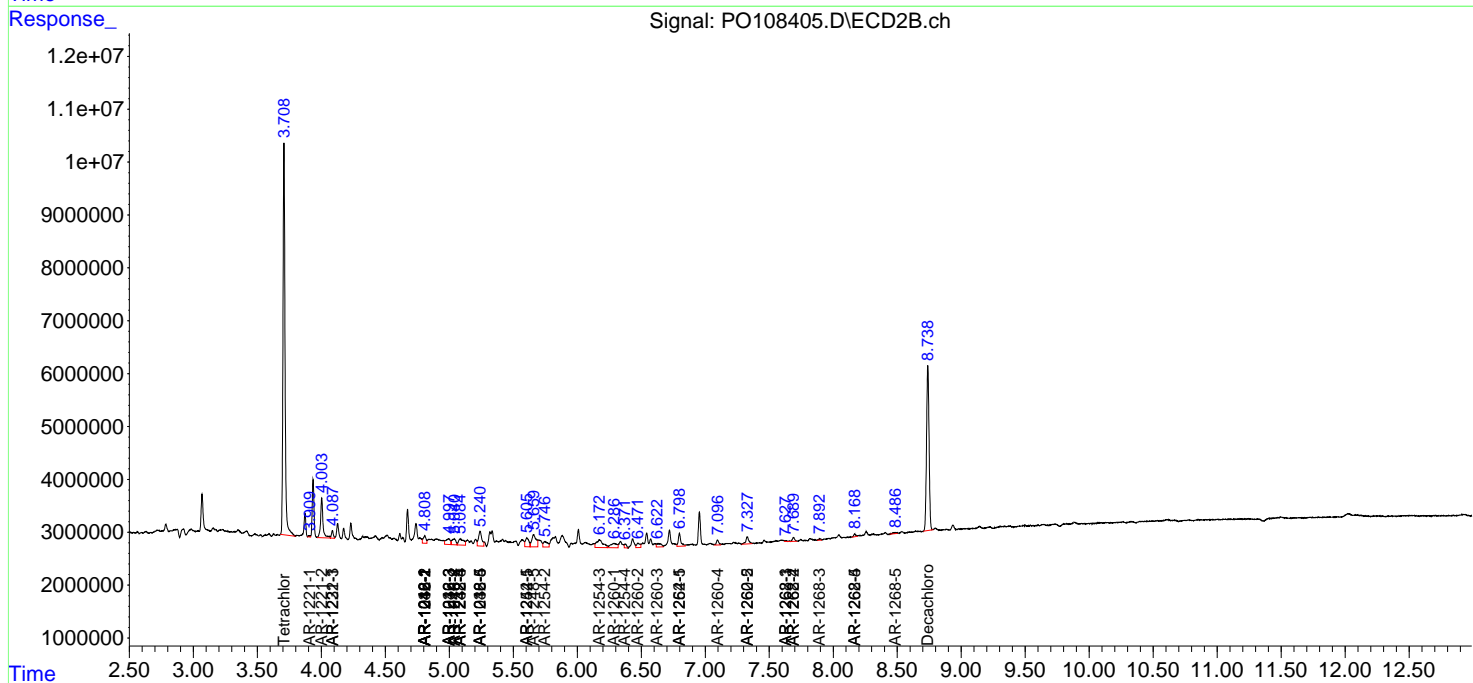
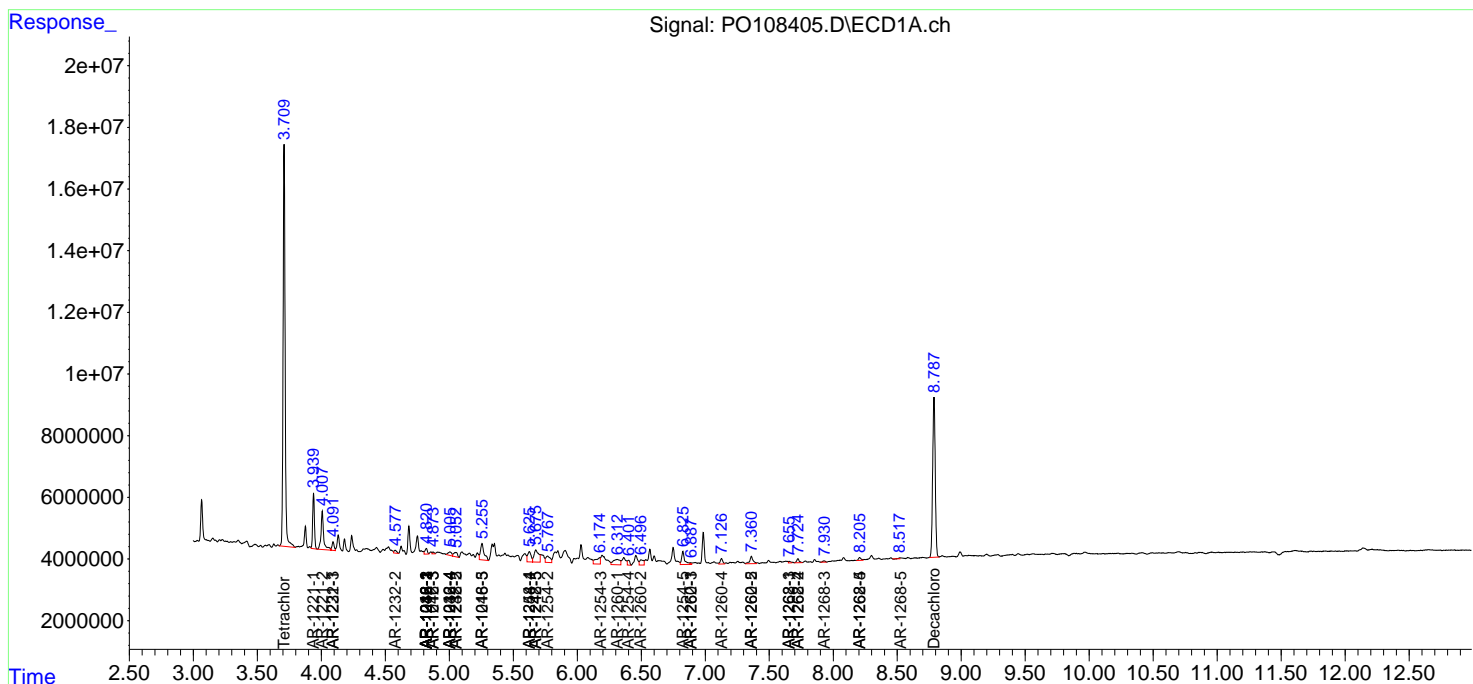
(f)=RT Delta > 1/2 Window (#)=Amounts differ by > 25% (m)=manual int.

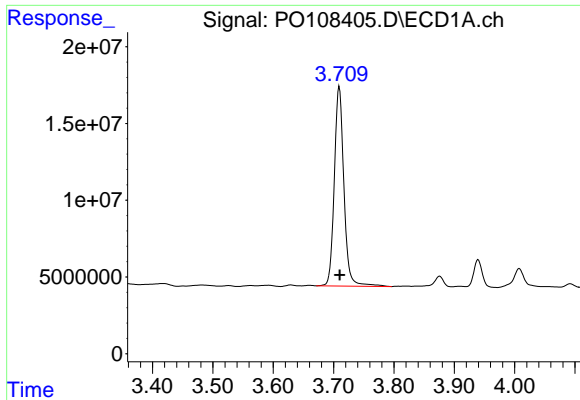
Data Path : Z:\pestpcbsrv\HPCHEM1\ECD\_O\Data\PO120924\  
Data File : PO108405.D  
Signal(s) : Signal #1: ECD1A.ch Signal #2: ECD2B.ch  
Acq On : 09 Dec 2024 12:54  
Operator : YP/AJ  
Sample : P5159-01  
Misc :  
ALS Vial : 11 Sample Multiplier: 1

Instrument :  
ECD\_O  
ClientSampleId :

Integration File signal 1: autoint1.e  
Integration File signal 2: autoint2.e  
Quant Time: Dec 10 01:35:18 2024  
Quant Method : Z:\pestpcbsrv\HPCHEM1\ECD\_O\methods\PO120624.M  
Quant Title : GC EXTRACTABLES  
QLast Update : Sat Dec 07 05:58:15 2024  
Response via : Initial Calibration  
Integrator: ChemStation

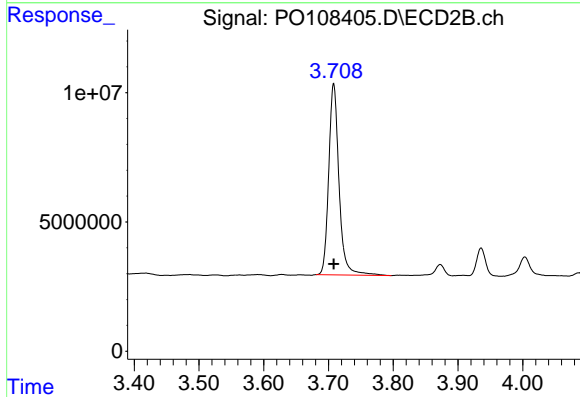
Volume Inj. : 2 µl  
Signal #1 Phase : ZB-MR1 Signal #2 Phase: ZB-MR2  
Signal #1 Info : 30Mx0.32mmx 0.50µ Signal #2 Info : 30M x 0.32mm x 0.25µm



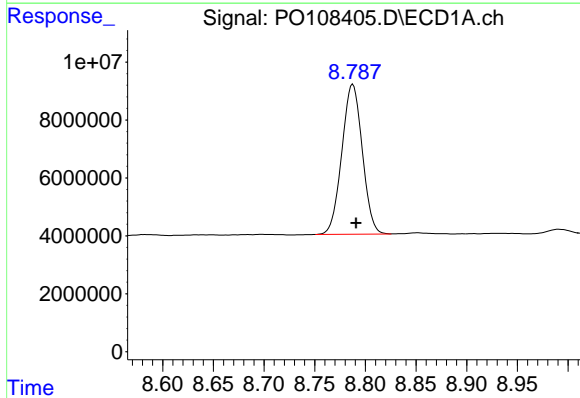


#1 Tetrachloro-m-xylene  
 R.T.: 3.709 min  
 Delta R.T.: 0.000 min  
 Response: 143908351  
 Conc: 16.54 ng/ml

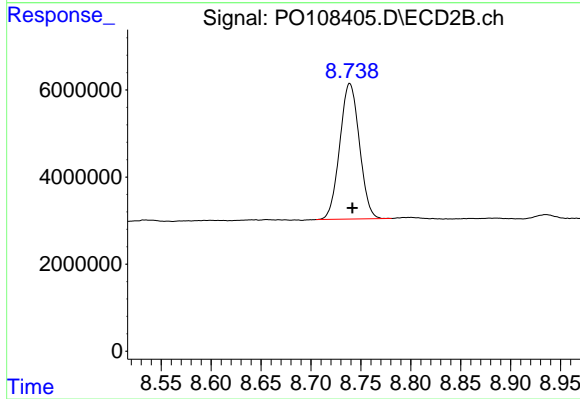
Instrument :  
 ECD\_O  
 ClientSampleId :



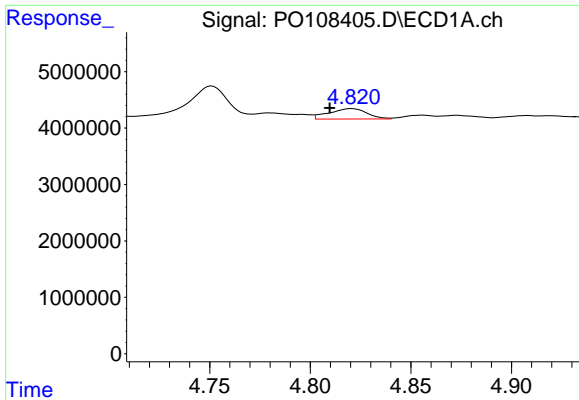
#1 Tetrachloro-m-xylene  
 R.T.: 3.708 min  
 Delta R.T.: 0.000 min  
 Response: 81860969  
 Conc: 16.15 ng/ml



#2 Decachlorobiphenyl  
 R.T.: 8.788 min  
 Delta R.T.: -0.003 min  
 Response: 72694432  
 Conc: 9.95 ng/ml



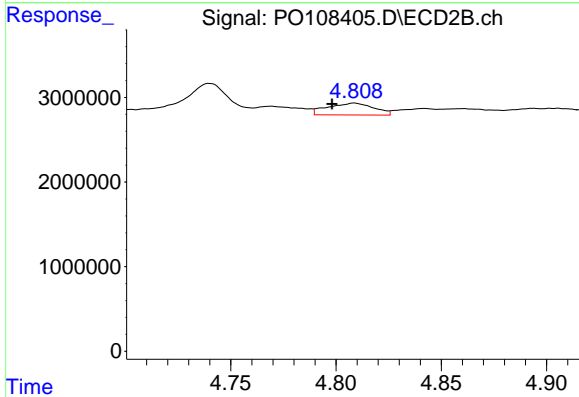
#2 Decachlorobiphenyl  
 R.T.: 8.739 min  
 Delta R.T.: -0.002 min  
 Response: 42668953  
 Conc: 11.01 ng/ml



#3 AR-1016-1

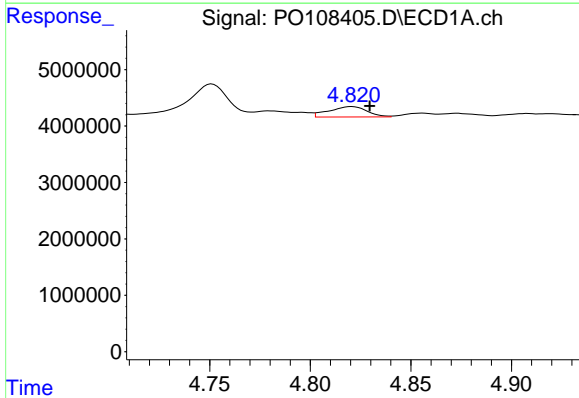
R.T.: 4.821 min  
 Delta R.T.: 0.011 min  
 Response: 2403441  
 Conc: 7.79 ng/ml

Instrument :  
 ECD\_O  
 ClientSampleId :



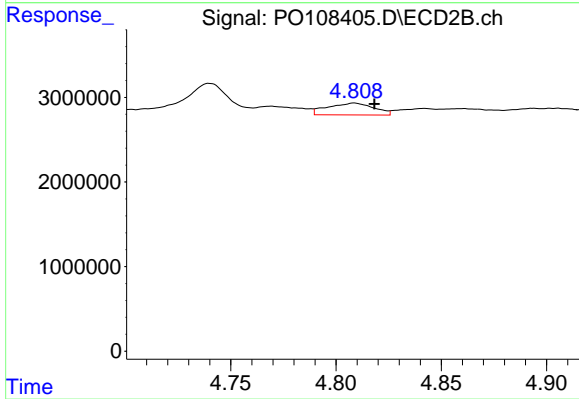
#3 AR-1016-1

R.T.: 4.809 min  
 Delta R.T.: 0.011 min  
 Response: 2153887  
 Conc: 13.42 ng/ml



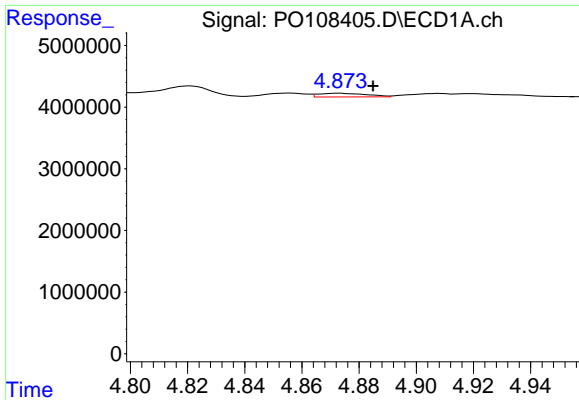
#4 AR-1016-2

R.T.: 4.821 min  
 Delta R.T.: -0.009 min  
 Response: 2403441  
 Conc: 5.76 ng/ml



#4 AR-1016-2

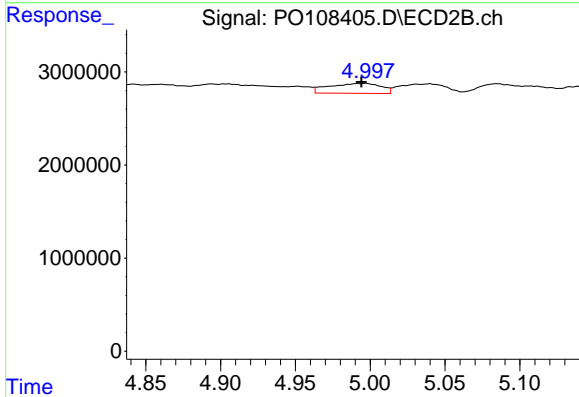
R.T.: 4.809 min  
 Delta R.T.: -0.009 min  
 Response: 2153887  
 Conc: 9.70 ng/ml



#5 AR-1016-3

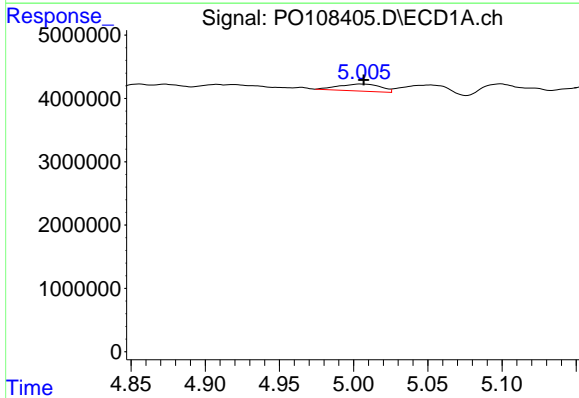
R.T.: 4.873 min  
 Delta R.T.: -0.012 min  
 Response: 693056  
 Conc: 2.37 ng/ml

Instrument :  
 ECD\_O  
 ClientSampleId :



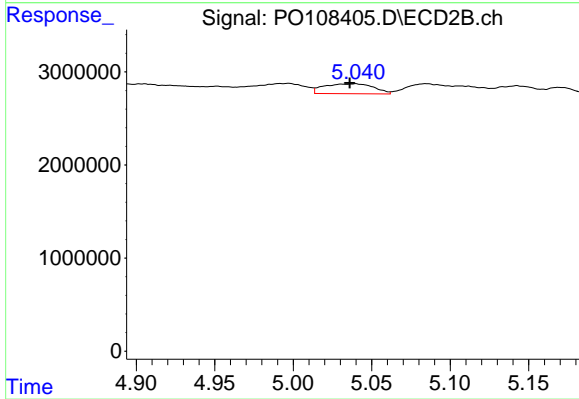
#5 AR-1016-3

R.T.: 4.997 min  
 Delta R.T.: 0.003 min  
 Response: 2561805  
 Conc: 20.36 ng/ml



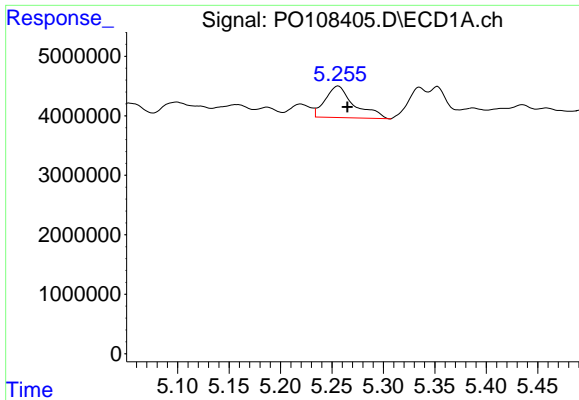
#6 AR-1016-4

R.T.: 5.005 min  
 Delta R.T.: -0.002 min  
 Response: 2169078  
 Conc: 9.38 ng/ml



#6 AR-1016-4

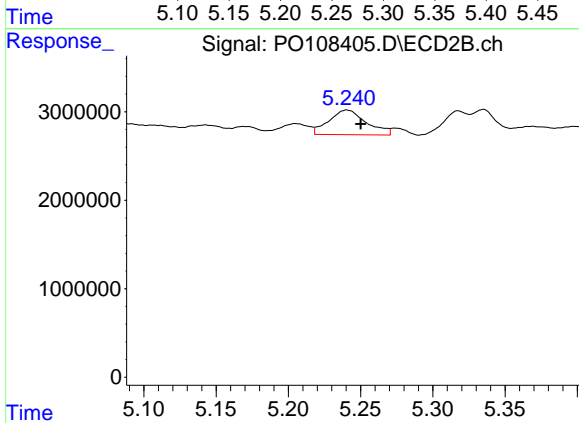
R.T.: 5.040 min  
 Delta R.T.: 0.004 min  
 Response: 2351400  
 Conc: 22.44 ng/ml



#7 AR-1016-5

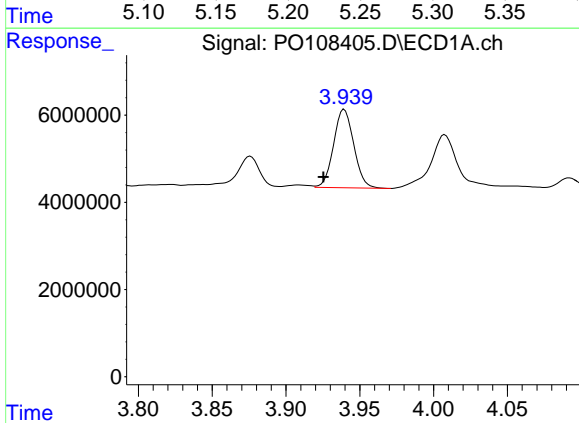
R.T.: 5.256 min  
 Delta R.T.: -0.009 min  
 Response: 10374378  
 Conc: 41.22 ng/ml

Instrument :  
 ECD\_O  
 ClientSampleId :



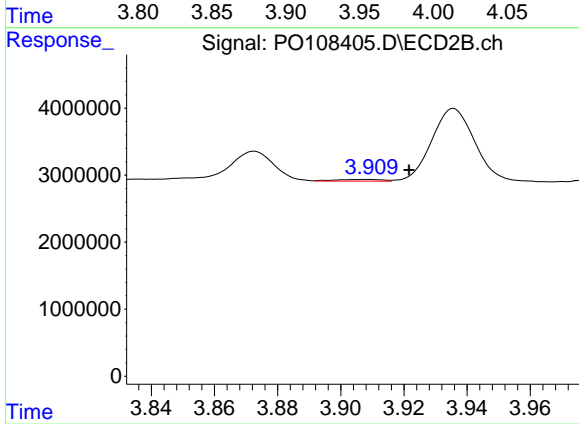
#7 AR-1016-5

R.T.: 5.241 min  
 Delta R.T.: -0.010 min  
 Response: 5031340  
 Conc: 37.21 ng/ml



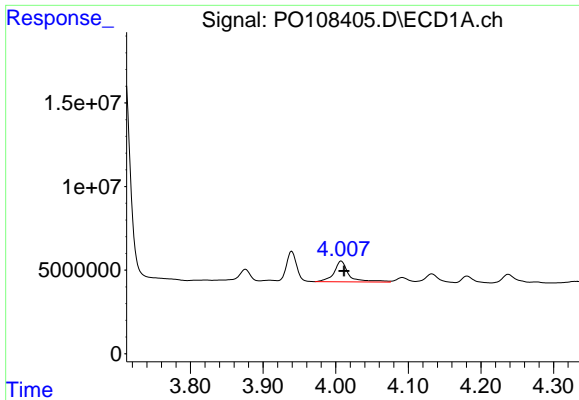
#8 AR-1221-1

R.T.: 3.939 min  
 Delta R.T.: 0.014 min  
 Response: 17184197  
 Conc: 151.88 ng/ml



#8 AR-1221-1

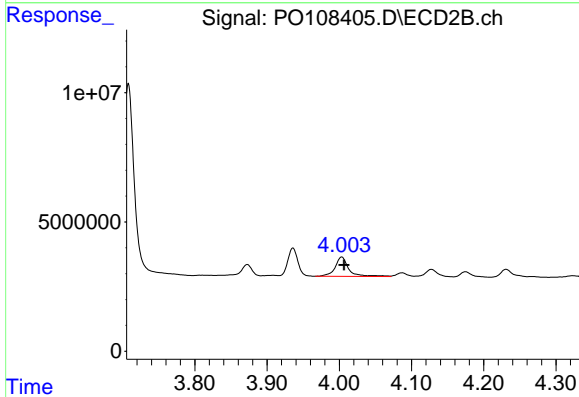
R.T.: 3.908 min  
 Delta R.T.: -0.013 min  
 Response: 255287  
 Conc: 4.11 ng/ml



#9 AR-1221-2

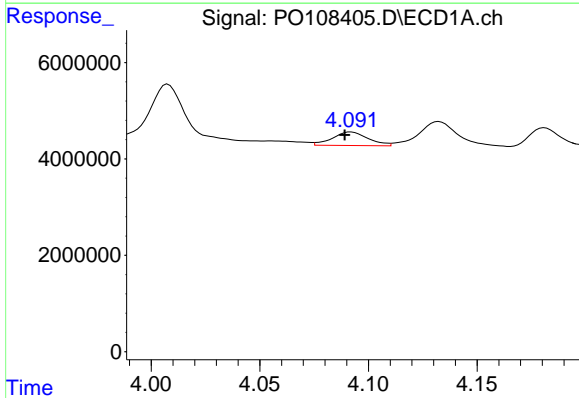
R.T.: 4.008 min  
 Delta R.T.: -0.004 min  
 Response: 17776280  
 Conc: 204.98 ng/ml

Instrument :  
 ECD\_O  
 ClientSampleId :



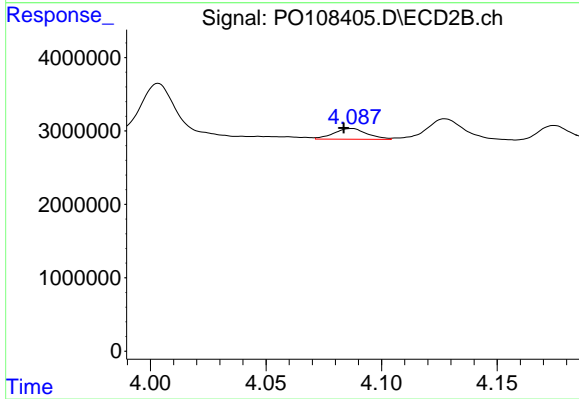
#9 AR-1221-2

R.T.: 4.003 min  
 Delta R.T.: -0.004 min  
 Response: 9856672  
 Conc: 207.75 ng/ml



#10 AR-1221-3

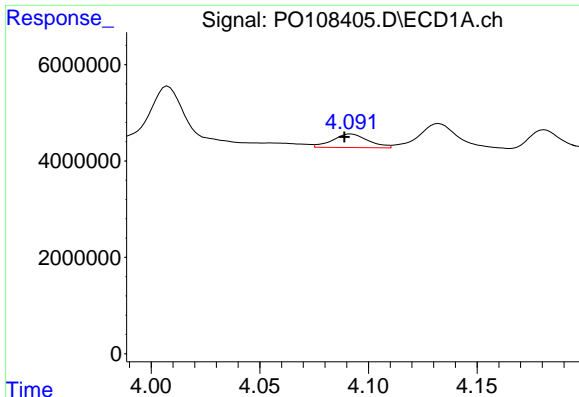
R.T.: 4.092 min  
 Delta R.T.: 0.003 min  
 Response: 3210219  
 Conc: 12.63 ng/ml



#10 AR-1221-3

R.T.: 4.087 min  
 Delta R.T.: 0.003 min  
 Response: 1459927  
 Conc: 10.38 ng/ml

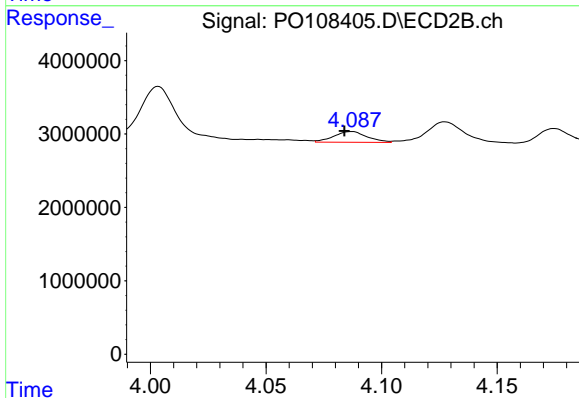




#11 AR-1232-1

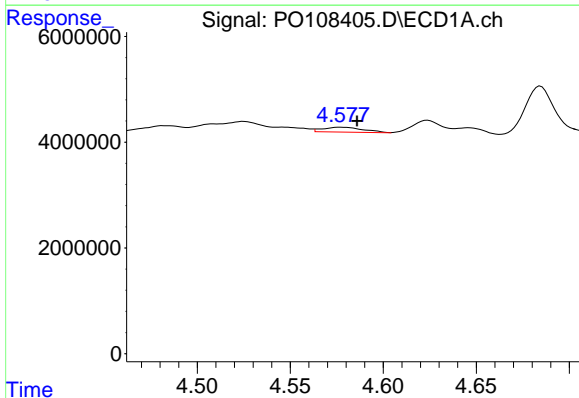
R.T.: 4.092 min  
 Delta R.T.: 0.003 min  
 Response: 3210219  
 Conc: 15.68 ng/ml

Instrument :  
 ECD\_O  
 ClientSampleId :



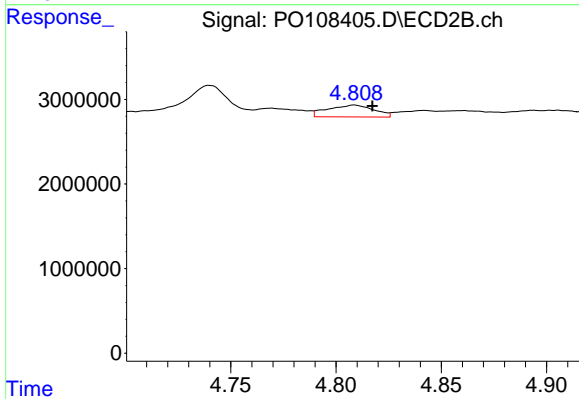
#11 AR-1232-1

R.T.: 4.087 min  
 Delta R.T.: 0.003 min  
 Response: 1459927  
 Conc: 13.03 ng/ml



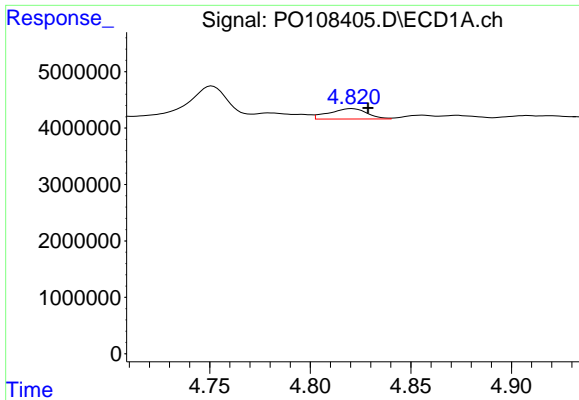
#12 AR-1232-2

R.T.: 4.577 min  
 Delta R.T.: -0.009 min  
 Response: 1386785  
 Conc: 12.13 ng/ml



#12 AR-1232-2

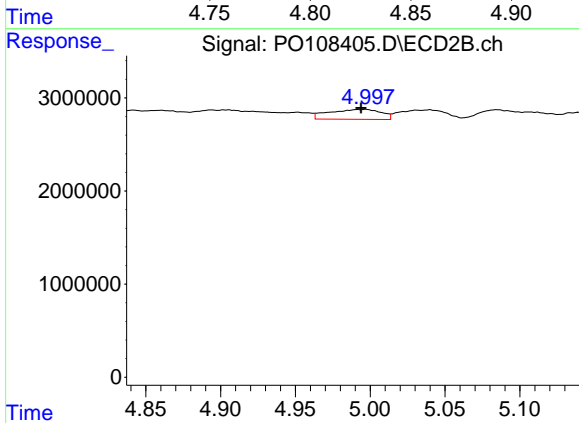
R.T.: 4.809 min  
 Delta R.T.: -0.009 min  
 Response: 2153887  
 Conc: 20.37 ng/ml



#13 AR-1232-3

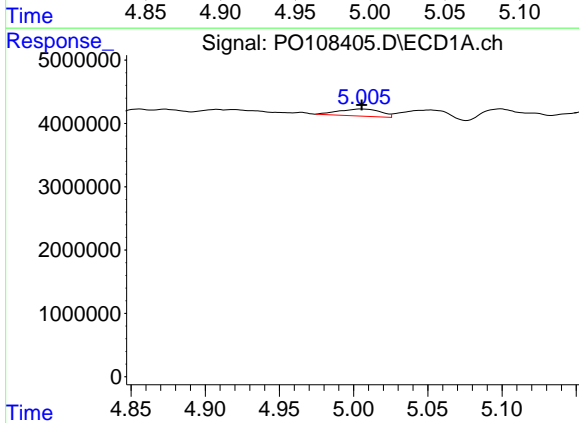
R.T.: 4.821 min  
 Delta R.T.: -0.008 min  
 Response: 2403441  
 Conc: 12.17 ng/ml

Instrument :  
 ECD\_O  
 ClientSampleId :



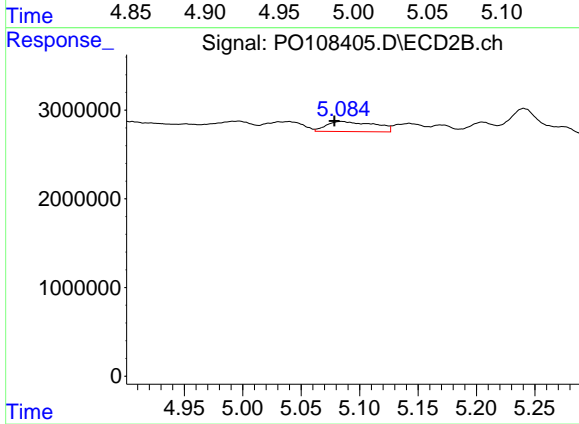
#13 AR-1232-3

R.T.: 4.997 min  
 Delta R.T.: 0.003 min  
 Response: 2561805  
 Conc: 42.45 ng/ml



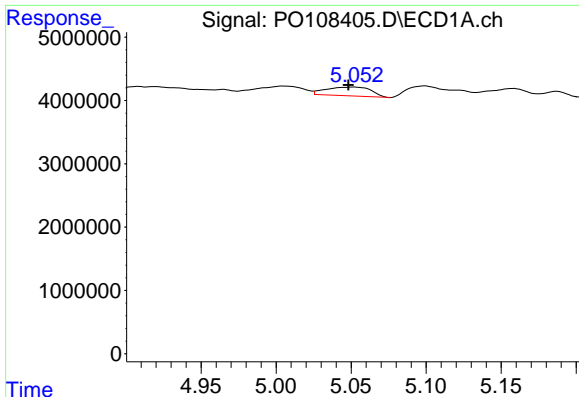
#14 AR-1232-4

R.T.: 5.005 min  
 Delta R.T.: 0.000 min  
 Response: 2169078  
 Conc: 20.01 ng/ml



#14 AR-1232-4

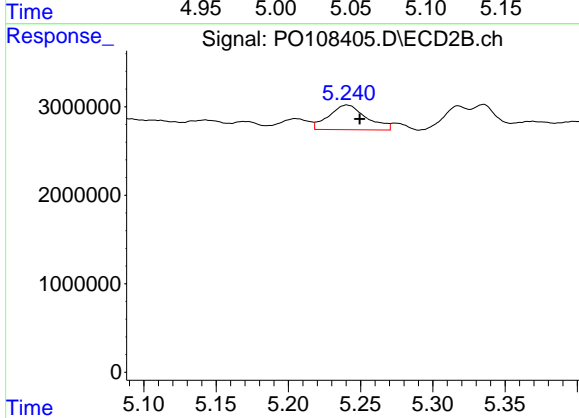
R.T.: 5.085 min  
 Delta R.T.: 0.006 min  
 Response: 3249342  
 Conc: 58.49 ng/ml



#15 AR-1232-5

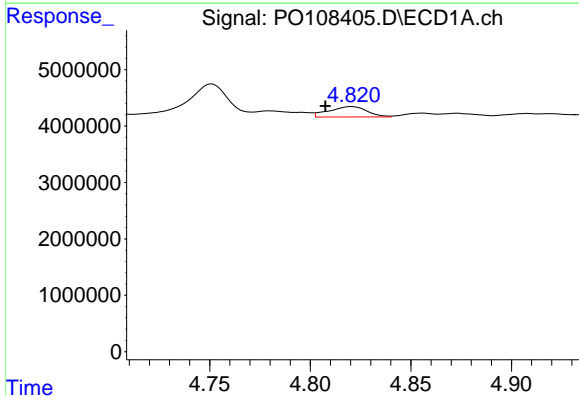
R.T.: 5.052 min  
 Delta R.T.: 0.004 min  
 Response: 2885908  
 Conc: 36.84 ng/ml

Instrument :  
 ECD\_O  
 ClientSampleId :



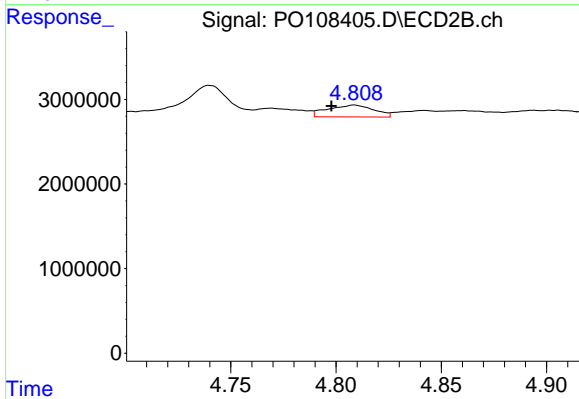
#15 AR-1232-5

R.T.: 5.241 min  
 Delta R.T.: -0.009 min  
 Response: 5031340  
 Conc: 87.39 ng/ml



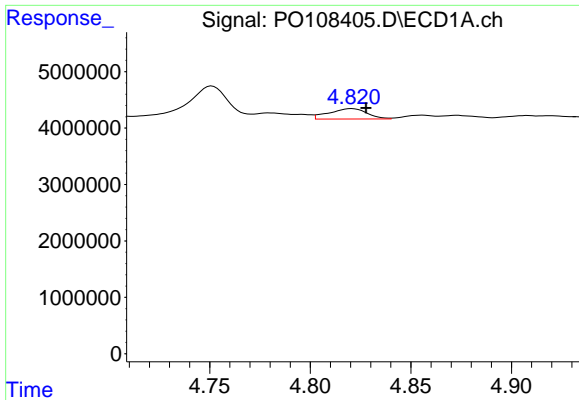
#16 AR-1242-1

R.T.: 4.821 min  
 Delta R.T.: 0.013 min  
 Response: 2403441  
 Conc: 9.34 ng/ml



#16 AR-1242-1

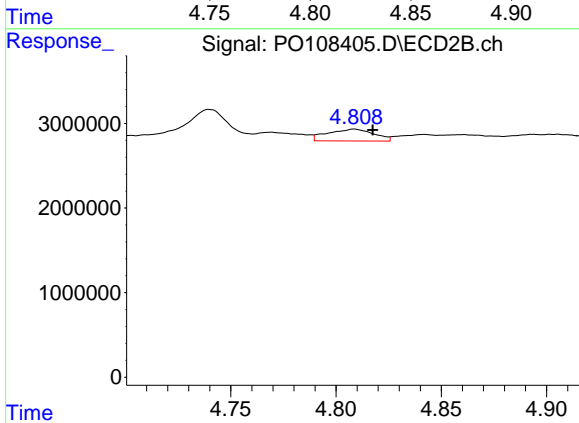
R.T.: 4.809 min  
 Delta R.T.: 0.011 min  
 Response: 2153887  
 Conc: 15.86 ng/ml



#17 AR-1242-2

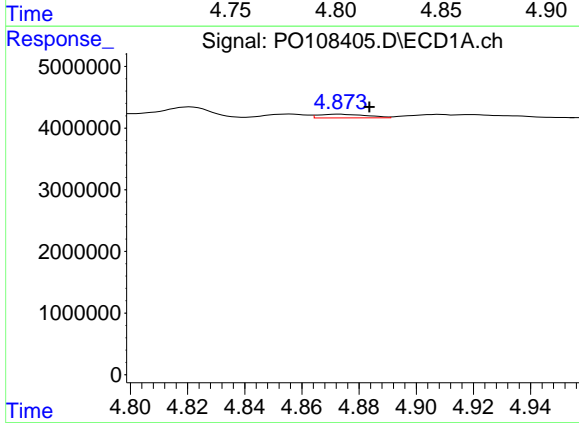
R.T.: 4.821 min  
 Delta R.T.: -0.007 min  
 Response: 2403441  
 Conc: 6.96 ng/ml

Instrument :  
 ECD\_O  
 ClientSampleId :



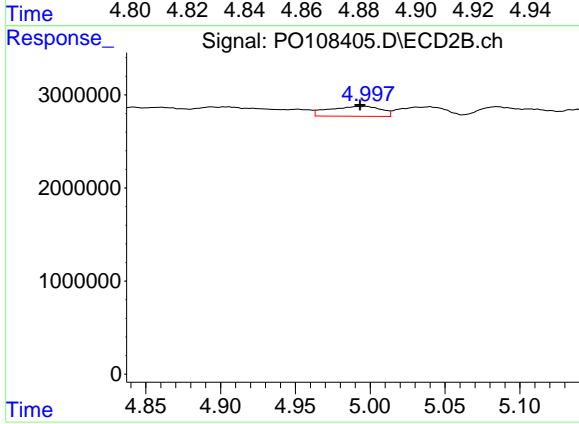
#17 AR-1242-2

R.T.: 4.809 min  
 Delta R.T.: -0.009 min  
 Response: 2153887  
 Conc: 11.61 ng/ml



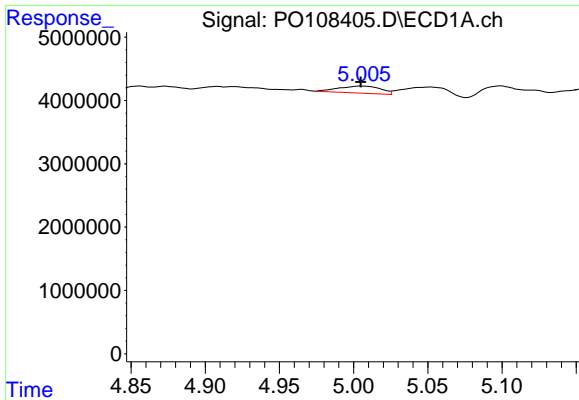
#18 AR-1242-3

R.T.: 4.873 min  
 Delta R.T.: -0.011 min  
 Response: 693056  
 Conc: 2.87 ng/ml



#18 AR-1242-3

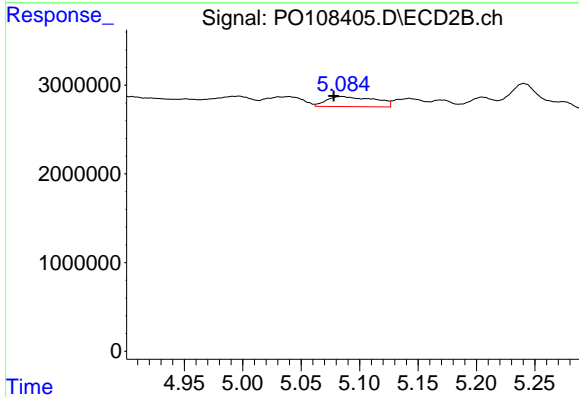
R.T.: 4.997 min  
 Delta R.T.: 0.003 min  
 Response: 2561805  
 Conc: 24.31 ng/ml



#19 AR-1242-4

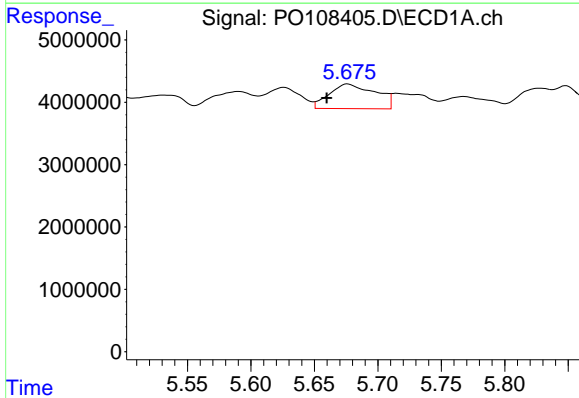
R.T.: 5.005 min  
 Delta R.T.: 0.000 min  
 Response: 2169078  
 Conc: 11.37 ng/ml

Instrument :  
 ECD\_O  
 ClientSampleId :



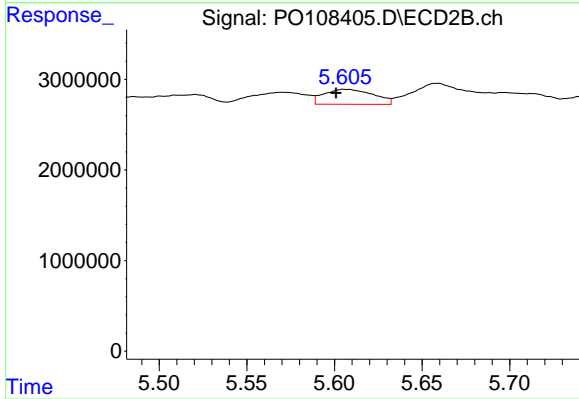
#19 AR-1242-4

R.T.: 5.085 min  
 Delta R.T.: 0.007 min  
 Response: 3249342  
 Conc: 30.27 ng/ml



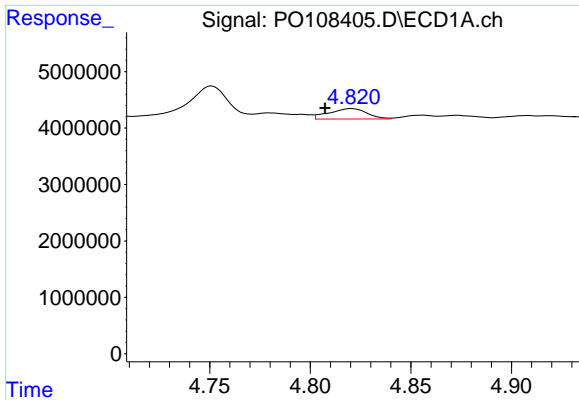
#20 AR-1242-5

R.T.: 5.676 min  
 Delta R.T.: 0.016 min  
 Response: 9966729  
 Conc: 47.99 ng/ml



#20 AR-1242-5

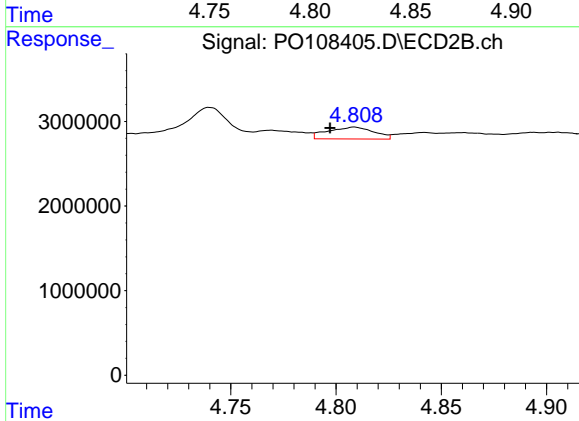
R.T.: 5.606 min  
 Delta R.T.: 0.005 min  
 Response: 3232822  
 Conc: 25.58 ng/ml



#21 AR-1248-1

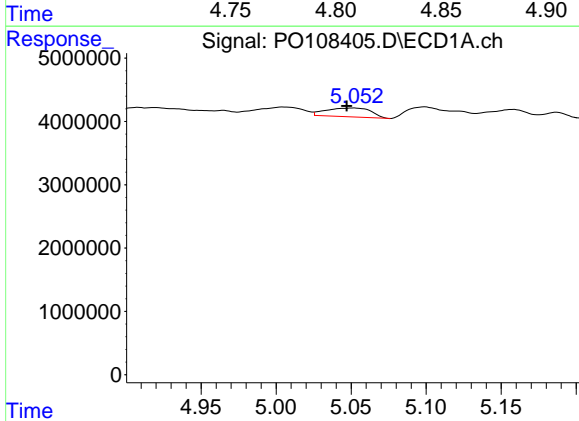
R.T.: 4.821 min  
 Delta R.T.: 0.013 min  
 Response: 2403441  
 Conc: 12.00 ng/ml

Instrument :  
 ECD\_O  
 ClientSampleId :



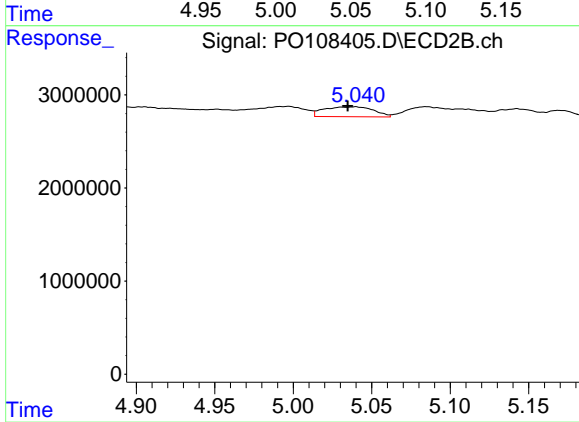
#21 AR-1248-1

R.T.: 4.809 min  
 Delta R.T.: 0.012 min  
 Response: 2153887  
 Conc: 20.49 ng/ml



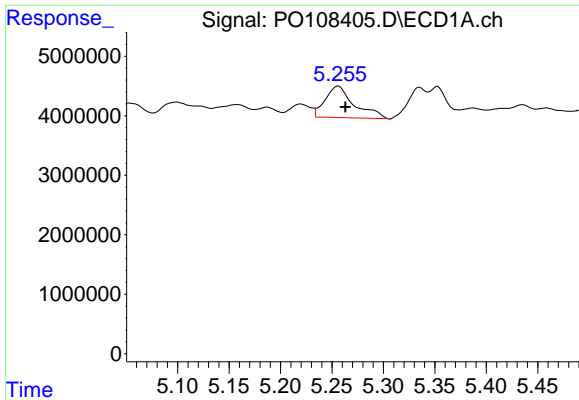
#22 AR-1248-2

R.T.: 5.052 min  
 Delta R.T.: 0.005 min  
 Response: 2885908  
 Conc: 10.41 ng/ml



#22 AR-1248-2

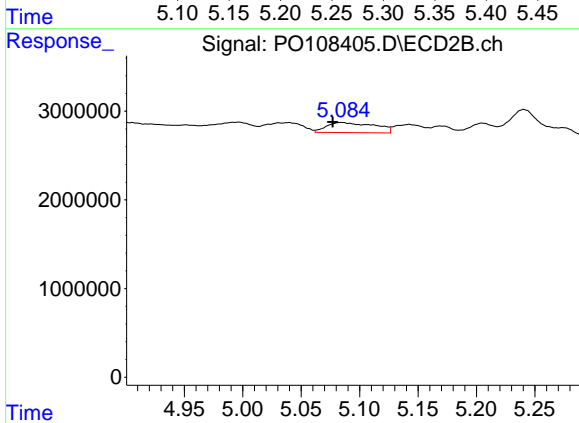
R.T.: 5.040 min  
 Delta R.T.: 0.005 min  
 Response: 2351400  
 Conc: 15.75 ng/ml



#23 AR-1248-3

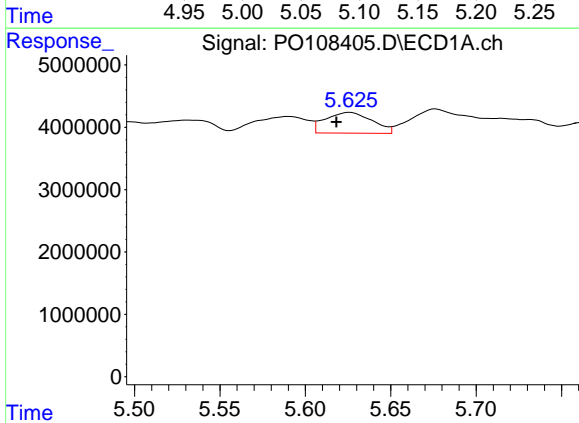
R.T.: 5.256 min  
 Delta R.T.: -0.007 min  
 Response: 10374378  
 Conc: 30.42 ng/ml

Instrument :  
 ECD\_O  
 ClientSampleId :



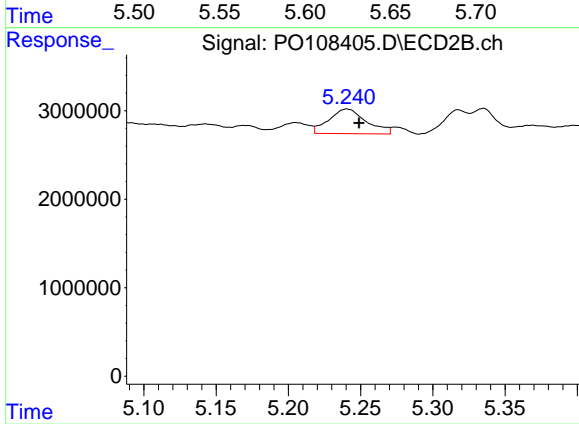
#23 AR-1248-3

R.T.: 5.085 min  
 Delta R.T.: 0.008 min  
 Response: 3249342  
 Conc: 20.51 ng/ml



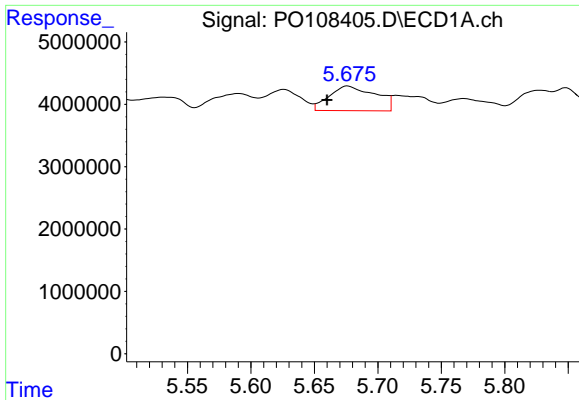
#24 AR-1248-4

R.T.: 5.626 min  
 Delta R.T.: 0.008 min  
 Response: 6350476  
 Conc: 13.33 ng/ml



#24 AR-1248-4

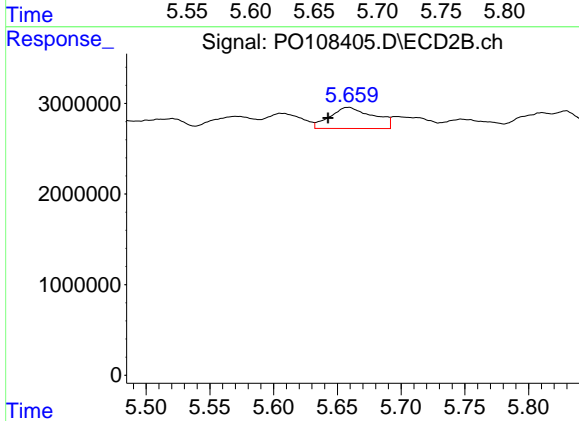
R.T.: 5.241 min  
 Delta R.T.: -0.008 min  
 Response: 5031340  
 Conc: 27.56 ng/ml



#25 AR-1248-5

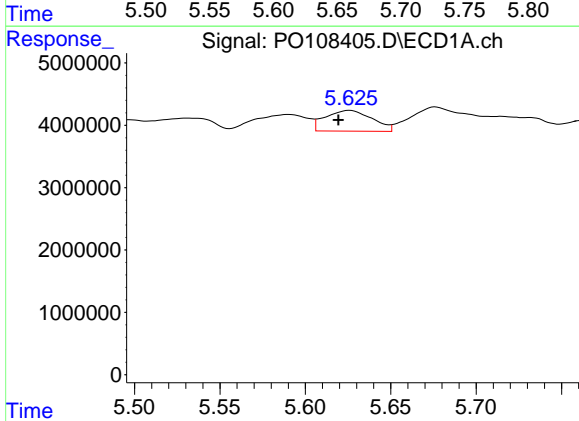
R.T.: 5.676 min  
 Delta R.T.: 0.016 min  
 Response: 9966729  
 Conc: 29.43 ng/ml

Instrument :  
 ECD\_O  
 ClientSampleId :



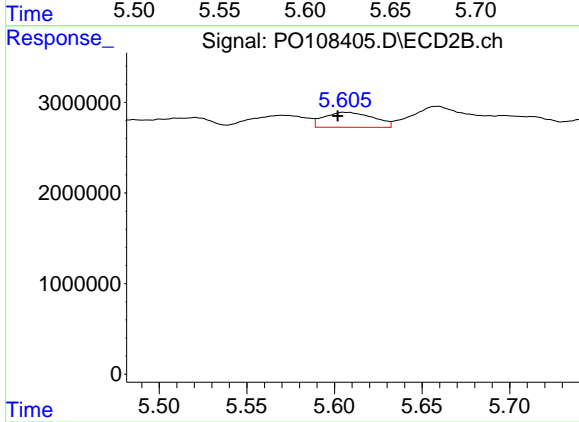
#25 AR-1248-5

R.T.: 5.659 min  
 Delta R.T.: 0.016 min  
 Response: 5518479  
 Conc: 31.43 ng/ml



#26 AR-1254-1

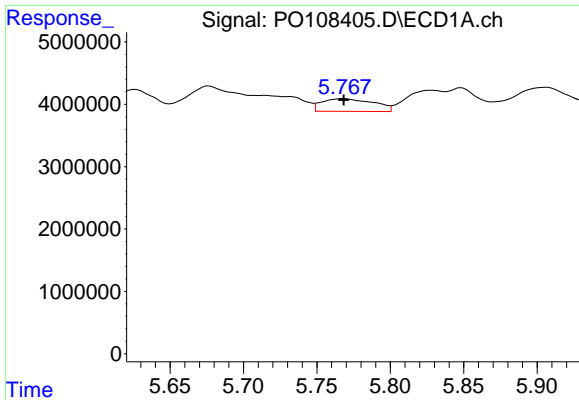
R.T.: 5.626 min  
 Delta R.T.: 0.007 min  
 Response: 6350476  
 Conc: 12.36 ng/ml



#26 AR-1254-1

R.T.: 5.606 min  
 Delta R.T.: 0.004 min  
 Response: 3232822  
 Conc: 11.94 ng/ml

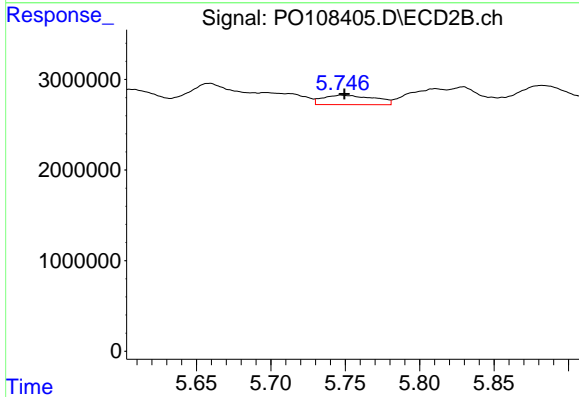




#27 AR-1254-2

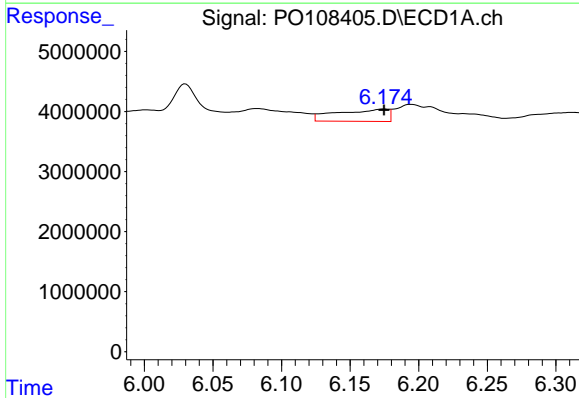
R.T.: 5.768 min  
 Delta R.T.: 0.000 min  
 Response: 4996821  
 Conc: 10.97 ng/ml

Instrument :  
 ECD\_O  
 ClientSampleId :



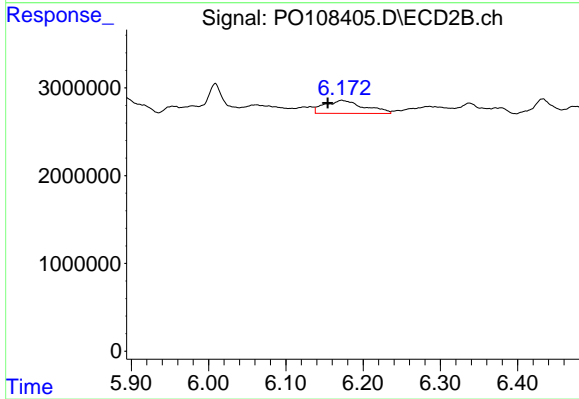
#27 AR-1254-2

R.T.: 5.747 min  
 Delta R.T.: -0.002 min  
 Response: 2512602  
 Conc: 10.47 ng/ml



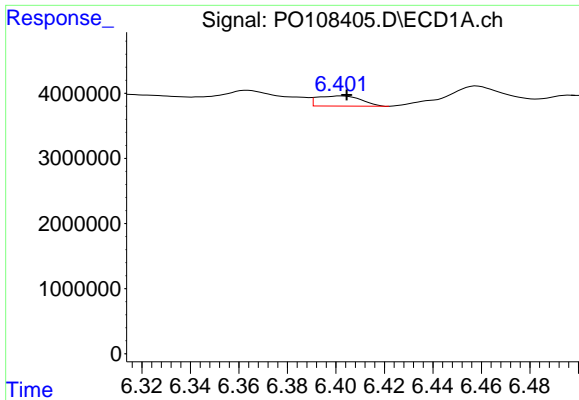
#28 AR-1254-3

R.T.: 6.175 min  
 Delta R.T.: 0.000 min  
 Response: 5274190  
 Conc: 7.32 ng/ml



#28 AR-1254-3

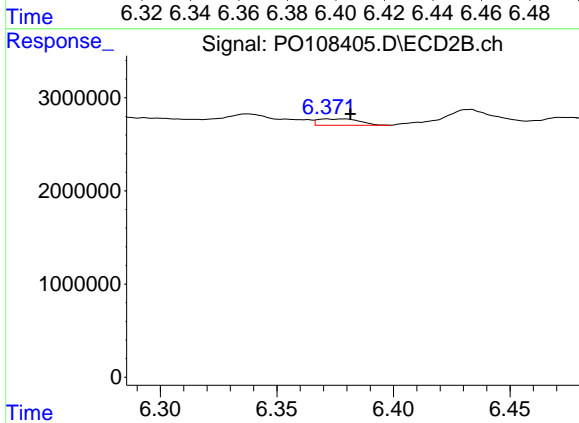
R.T.: 6.172 min  
 Delta R.T.: 0.018 min  
 Response: 5235104  
 Conc: 13.94 ng/ml



#29 AR-1254-4

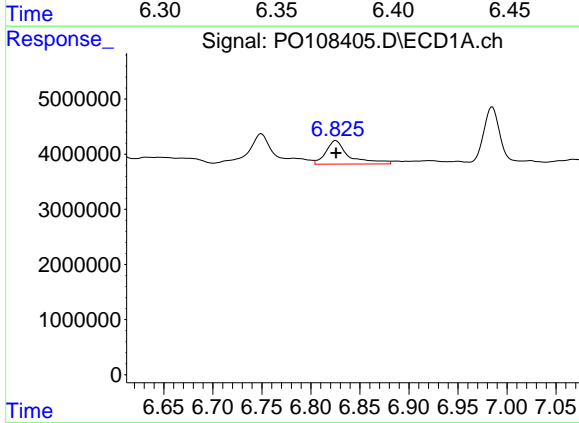
R.T.: 6.402 min  
 Delta R.T.: -0.002 min  
 Response: 1974204  
 Conc: 4.50 ng/ml

Instrument :  
 ECD\_O  
 ClientSampleId :



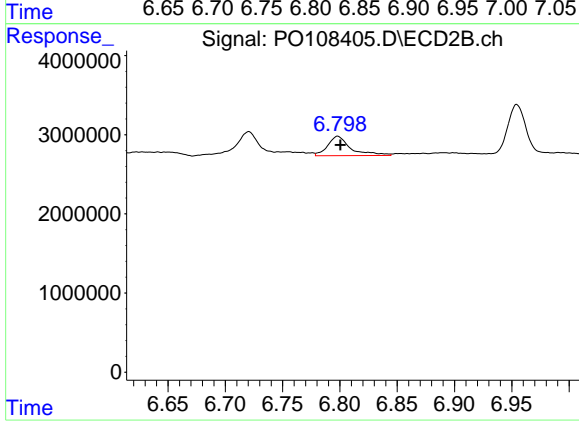
#29 AR-1254-4

R.T.: 6.371 min  
 Delta R.T.: -0.010 min  
 Response: 846324  
 Conc: 3.89 ng/ml



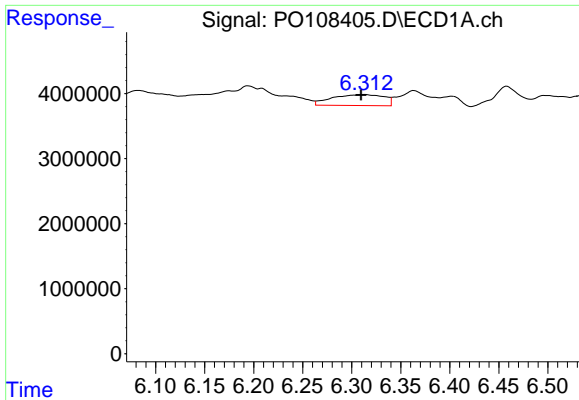
#30 AR-1254-5

R.T.: 6.825 min  
 Delta R.T.: 0.000 min  
 Response: 7004313  
 Conc: 11.03 ng/ml



#30 AR-1254-5

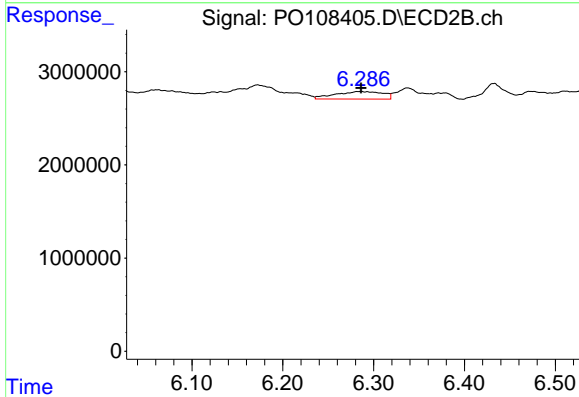
R.T.: 6.798 min  
 Delta R.T.: -0.002 min  
 Response: 3420268  
 Conc: 10.60 ng/ml



#31 AR-1260-1

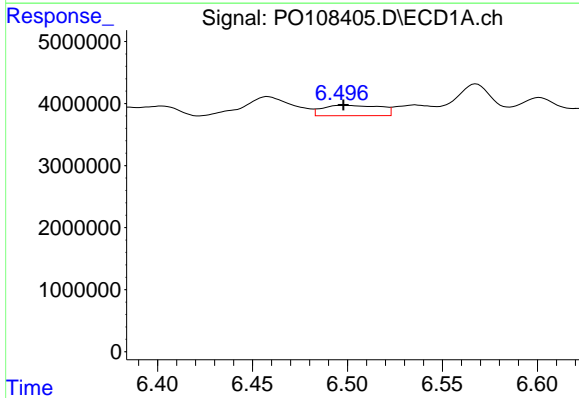
R.T.: 6.313 min  
 Delta R.T.: 0.003 min  
 Response: 6231949  
 Conc: 13.63 ng/ml

Instrument :  
 ECD\_O  
 ClientSampleId :



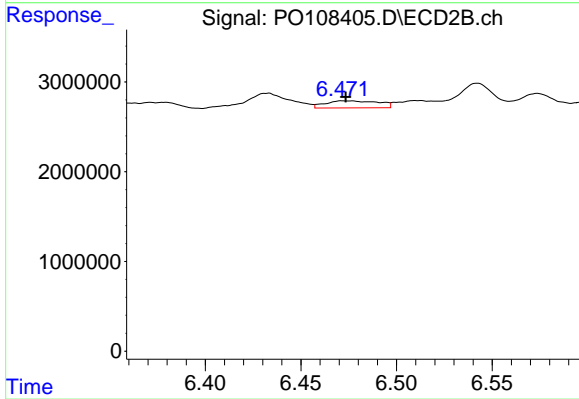
#31 AR-1260-1

R.T.: 6.286 min  
 Delta R.T.: 0.000 min  
 Response: 2936038  
 Conc: 12.55 ng/ml



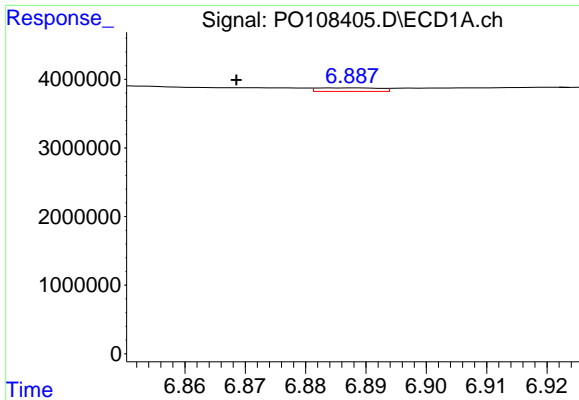
#32 AR-1260-2

R.T.: 6.497 min  
 Delta R.T.: -0.001 min  
 Response: 3540373  
 Conc: 6.37 ng/ml



#32 AR-1260-2

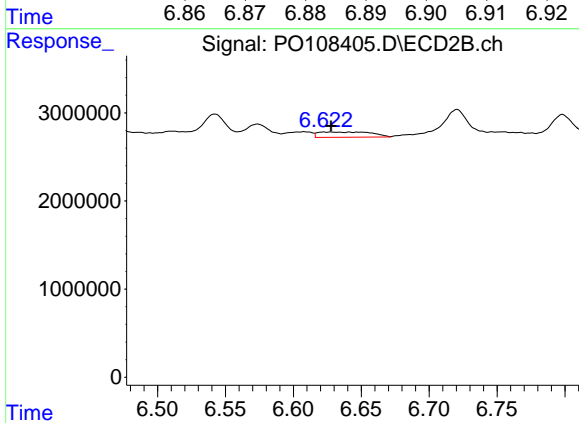
R.T.: 6.472 min  
 Delta R.T.: -0.002 min  
 Response: 1536221  
 Conc: 5.48 ng/ml



#33 AR-1260-3

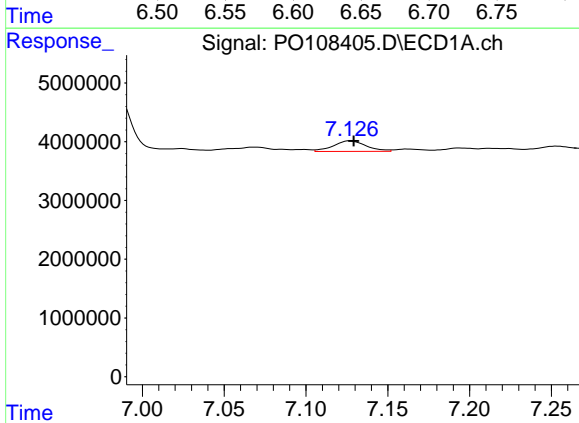
R.T.: 6.888 min  
 Delta R.T.: 0.020 min  
 Response: 373049  
 Conc: 0.80 ng/ml

Instrument :  
 ECD\_O  
 ClientSampleId :



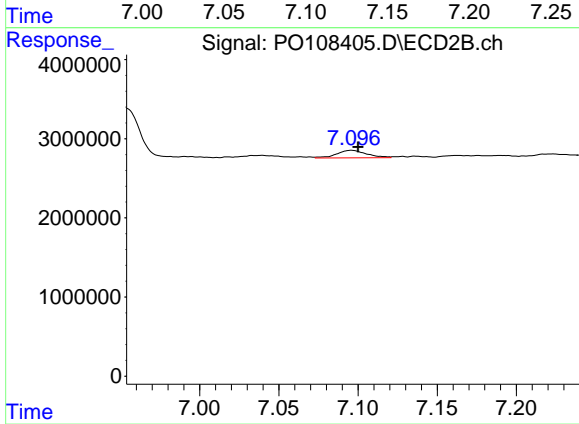
#33 AR-1260-3

R.T.: 6.622 min  
 Delta R.T.: -0.005 min  
 Response: 1628645  
 Conc: 6.18 ng/ml



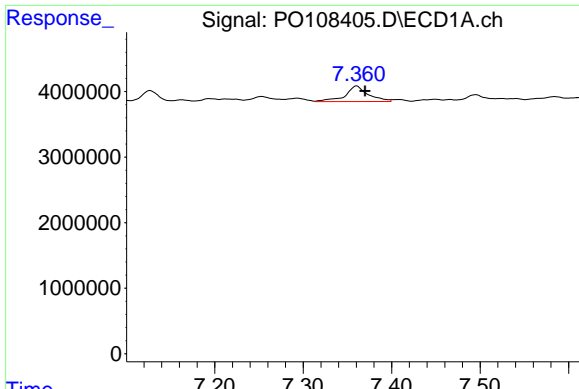
#34 AR-1260-4

R.T.: 7.127 min  
 Delta R.T.: -0.002 min  
 Response: 2483698  
 Conc: 5.84 ng/ml



#34 AR-1260-4

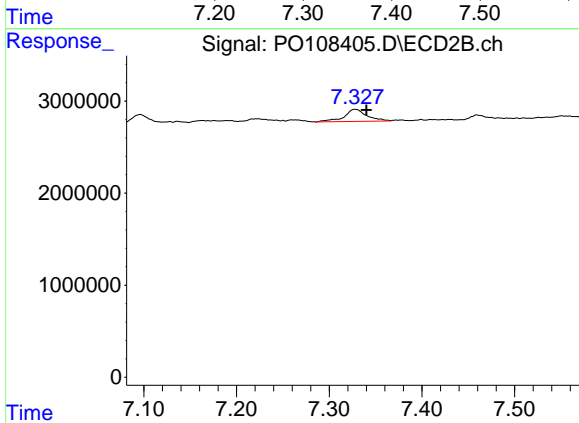
R.T.: 7.096 min  
 Delta R.T.: -0.004 min  
 Response: 1245522  
 Conc: 5.85 ng/ml



#35 AR-1260-5

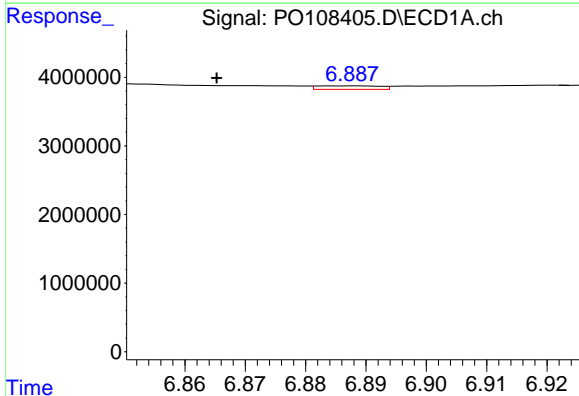
R.T.: 7.360 min  
 Delta R.T.: -0.009 min  
 Response: 4291871  
 Conc: 4.42 ng/ml

Instrument :  
 ECD\_O  
 ClientSampleId :



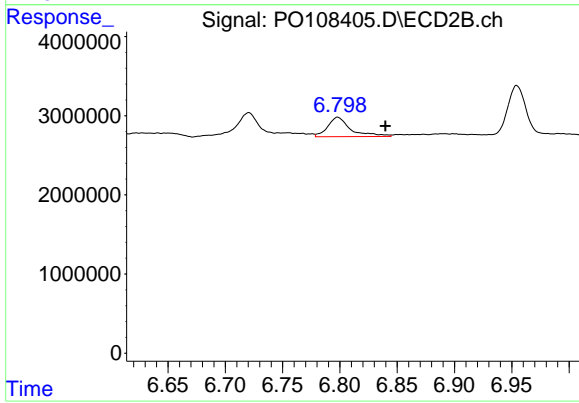
#35 AR-1260-5

R.T.: 7.328 min  
 Delta R.T.: -0.012 min  
 Response: 2223616  
 Conc: 4.59 ng/ml



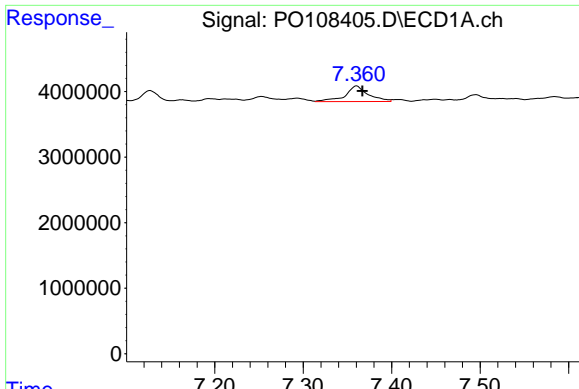
#36 AR-1262-1

R.T.: 6.888 min  
 Delta R.T.: 0.023 min  
 Response: 373049  
 Conc: 0.57 ng/ml



#36 AR-1262-1

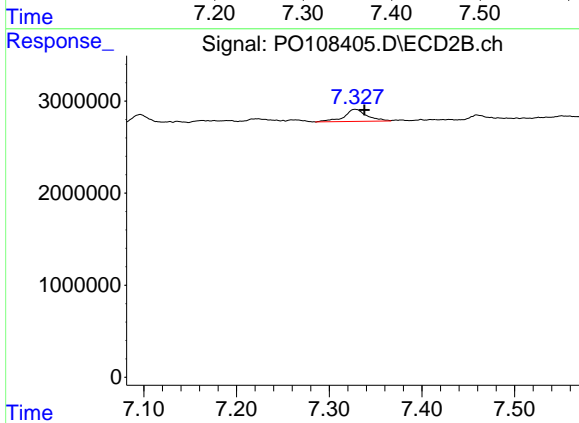
R.T.: 6.798 min  
 Delta R.T.: -0.041 min  
 Response: 3420268  
 Conc: 10.12 ng/ml



#37 AR-1262-2

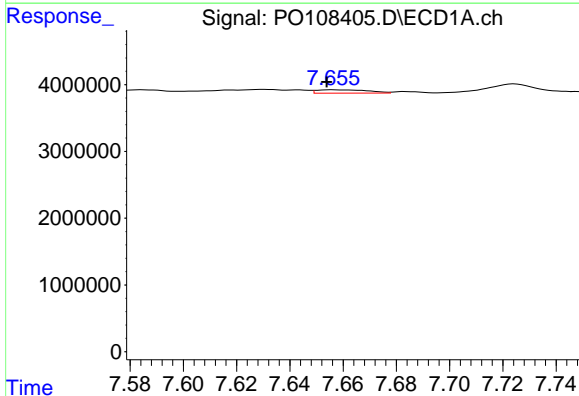
R.T.: 7.360 min  
 Delta R.T.: -0.007 min  
 Response: 4291871  
 Conc: 3.86 ng/ml

Instrument :  
 ECD\_O  
 ClientSampleId :



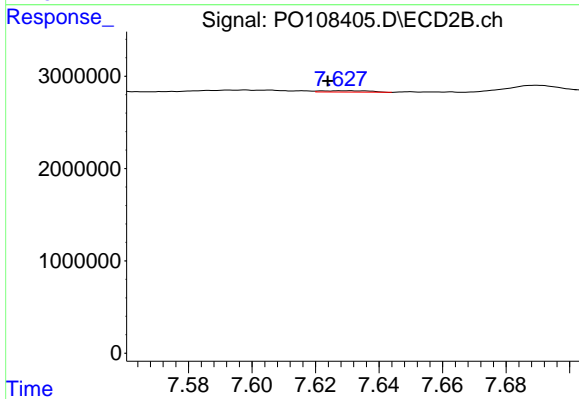
#37 AR-1262-2

R.T.: 7.328 min  
 Delta R.T.: -0.010 min  
 Response: 2223616  
 Conc: 3.89 ng/ml



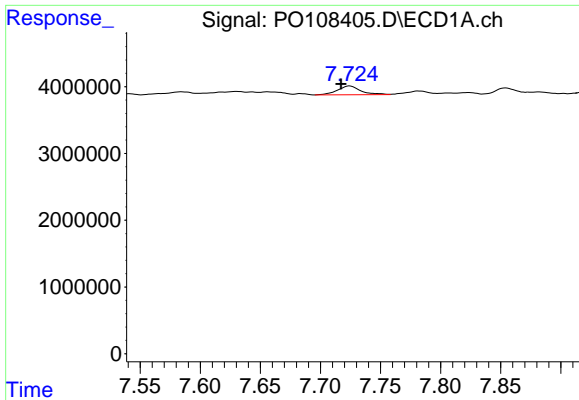
#38 AR-1262-3

R.T.: 7.656 min  
 Delta R.T.: 0.002 min  
 Response: 662684  
 Conc: 1.52 ng/ml



#38 AR-1262-3

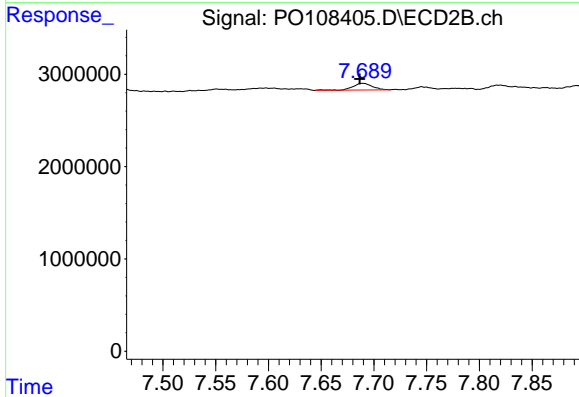
R.T.: 7.629 min  
 Delta R.T.: 0.006 min  
 Response: 160656  
 Conc: 0.72 ng/ml



#39 AR-1262-4

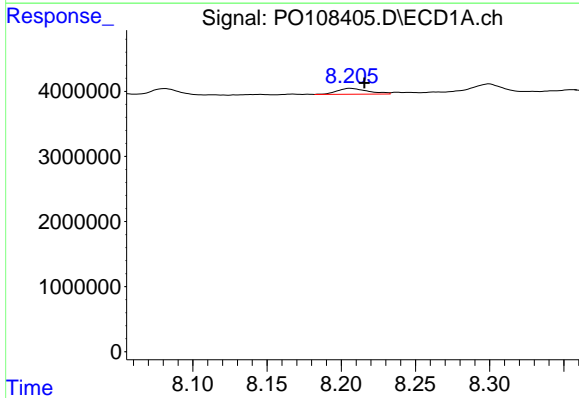
R.T.: 7.724 min  
 Delta R.T.: 0.007 min  
 Response: 1749813  
 Conc: 2.17 ng/ml

Instrument :  
 ECD\_O  
 ClientSampleId :



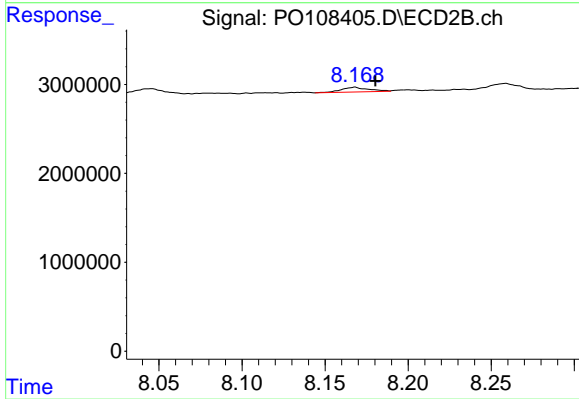
#39 AR-1262-4

R.T.: 7.690 min  
 Delta R.T.: 0.003 min  
 Response: 935727  
 Conc: 2.28 ng/ml



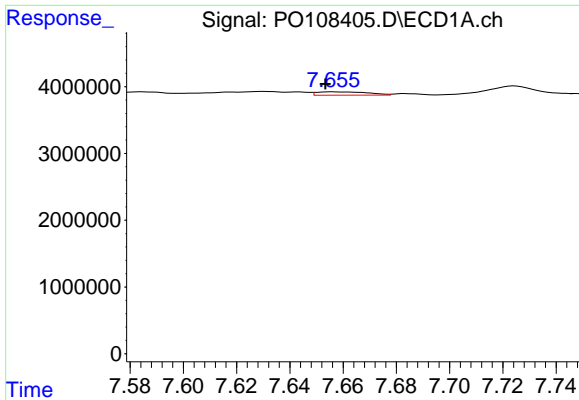
#40 AR-1262-5

R.T.: 8.206 min  
 Delta R.T.: -0.010 min  
 Response: 1315402  
 Conc: 3.71 ng/ml



#40 AR-1262-5

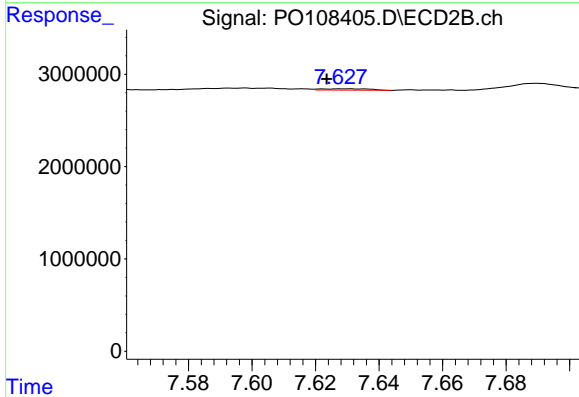
R.T.: 8.168 min  
 Delta R.T.: -0.013 min  
 Response: 615333  
 Conc: 3.33 ng/ml



#41 AR-1268-1

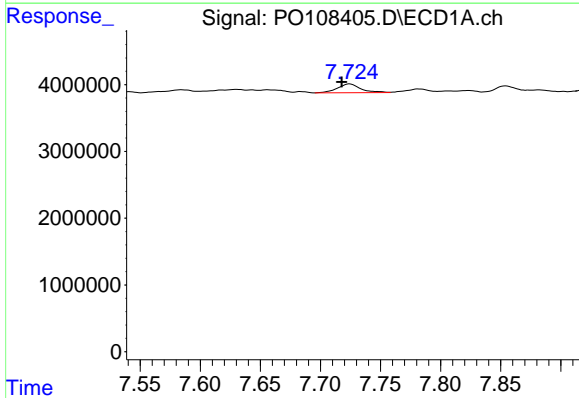
R.T.: 7.656 min  
 Delta R.T.: 0.003 min  
 Response: 662684  
 Conc: 0.53 ng/ml

Instrument :  
 ECD\_O  
 ClientSampleId :



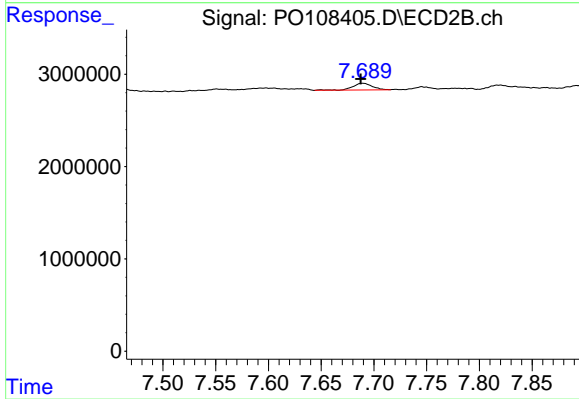
#41 AR-1268-1

R.T.: 7.629 min  
 Delta R.T.: 0.006 min  
 Response: 160656  
 Conc: 0.25 ng/ml



#42 AR-1268-2

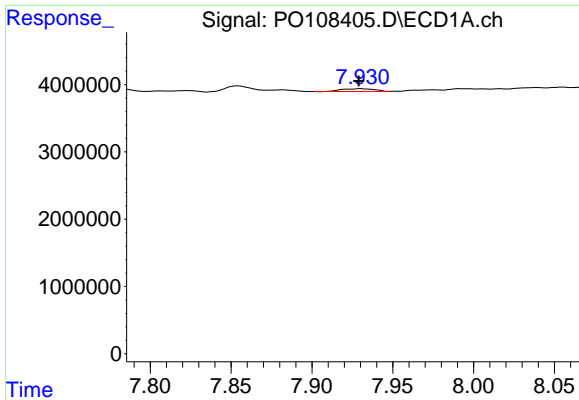
R.T.: 7.724 min  
 Delta R.T.: 0.007 min  
 Response: 1749813  
 Conc: 1.56 ng/ml



#42 AR-1268-2

R.T.: 7.690 min  
 Delta R.T.: 0.002 min  
 Response: 935727  
 Conc: 1.61 ng/ml

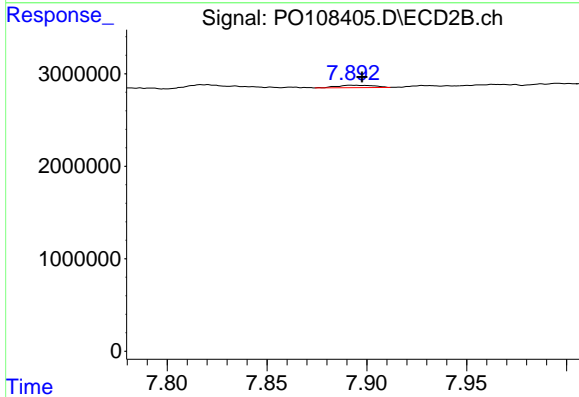




#43 AR-1268-3

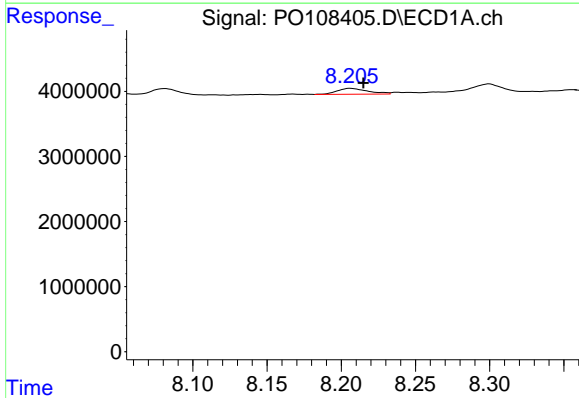
R.T.: 7.930 min  
 Delta R.T.: 0.001 min  
 Response: 567665  
 Conc: 0.63 ng/ml

Instrument :  
 ECD\_O  
 ClientSampleId :



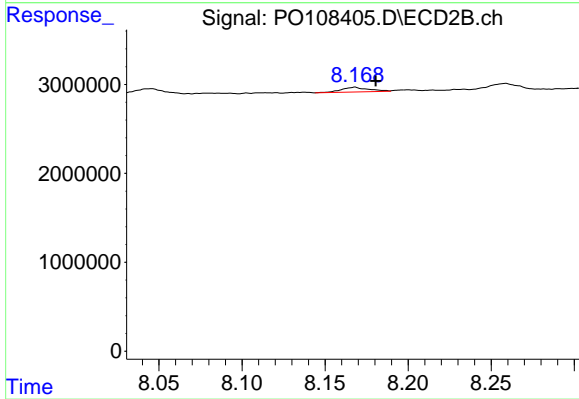
#43 AR-1268-3

R.T.: 7.893 min  
 Delta R.T.: -0.005 min  
 Response: 325724  
 Conc: 0.65 ng/ml



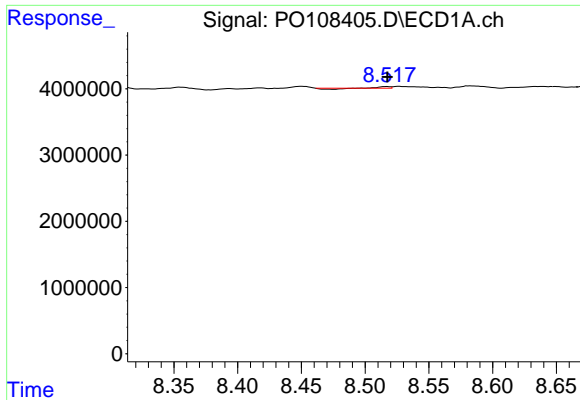
#44 AR-1268-4

R.T.: 8.206 min  
 Delta R.T.: -0.009 min  
 Response: 1315402  
 Conc: 3.40 ng/ml



#44 AR-1268-4

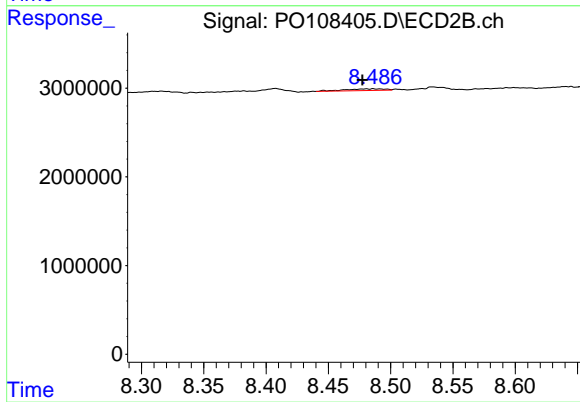
R.T.: 8.168 min  
 Delta R.T.: -0.013 min  
 Response: 615333  
 Conc: 3.03 ng/ml



#45 AR-1268-5

R.T.: 8.517 min  
 Delta R.T.: 0.000 min  
 Response: 32950  
 Conc: 0.01 ng/ml

Instrument :  
 ECD\_O  
 ClientSampleId :



#45 AR-1268-5

R.T.: 8.486 min  
 Delta R.T.: 0.009 min  
 Response: 439583  
 Conc: 0.30 ng/ml