

Data Path : Z:\pestpcbsrv\HPCHEM1\ECD_0\Data\PO120924\
 Data File : PO108415.D
 Signal(s) : Signal #1: ECD1A.ch Signal #2: ECD2B.ch
 Acq On : 09 Dec 2024 19:16
 Operator : YP/AJ
 Sample : I.BLK
 Misc :
 ALS Vial : 2 Sample Multiplier: 1

Instrument :
 ECD_0
 ClientSampleId :

Integration File signal 1: autoint1.e
 Integration File signal 2: autoint2.e
 Quant Time: Dec 10 01:40:47 2024
 Quant Method : Z:\pestpcbsrv\HPCHEM1\ECD_0\methods\PO120624.M
 Quant Title : GC EXTRACTABLES
 QLast Update : Sat Dec 07 05:58:15 2024
 Response via : Initial Calibration
 Integrator: ChemStation

Volume Inj. : 2 µl
 Signal #1 Phase : ZB-MR2 Signal #2 Phase: ZB-MR2
 Signal #1 Info : 30Mx0.32mmx 0.50µ Signal #2 Info : 30M x 0.32mm x 0.25µm

Compound	RT#1	RT#2	Resp#1	Resp#2	ng/ml	ng/ml

System Monitoring Compounds						
1) SA Tetrachlo...	3.709	3.707	197.4E6	115.3E6	22.688	22.738
2) SA Decachlor...	8.785	8.736	152.3E6	92089264	20.846	23.765
Target Compounds						
3) L1 AR-1016-1	4.819	4.808	4778417	3739156	15.492	23.301 #
4) L1 AR-1016-2	4.819	4.808	4778417	3739156	11.448	16.836 #
5) L1 AR-1016-3	4.886	4.985	120216	1215770	0.411	9.662 #
6) L1 AR-1016-4	5.006	5.043	407689	3233500	1.764	30.852 #
7) L1 AR-1016-5	5.279	5.261	3446646	2844457	13.695	21.037 #
8) L2 AR-1221-1	3.924	3.923	1331748	210977	11.770	3.396 #
9) L2 AR-1221-2	4.012	4.007	4270729	2131635	49.247	44.929
10) L2 AR-1221-3	4.085	4.084	771225	208778	3.034	1.485 #
11) L3 AR-1232-1	4.085	4.084	771225	208778	3.766	1.863 #
12) L3 AR-1232-2	4.585	4.808	416181	3739156	3.639	35.357 #
13) L3 AR-1232-3	4.819	4.985	4778417	1215770	24.197	20.146
14) L3 AR-1232-4	5.006	5.111	407689	2432654	3.762	43.787 #
15) L3 AR-1232-5	5.056	5.261	2722714	2844457	34.760	49.403 #
16) L4 AR-1242-1	4.819	4.808	4778417	3739156	18.570	27.541 #
17) L4 AR-1242-2	4.819	4.808	4778417	3739156	13.844	20.162 #
18) L4 AR-1242-3	4.886	4.985	120216	1215770	0.498	11.537 #
19) L4 AR-1242-4	5.006	5.111	407689	2432654	2.138	22.665 #
20) L4 AR-1242-5	5.673	5.616	4496702	3190915	21.653	25.245
21) L5 AR-1248-1	4.819	4.808	4778417	3739156	23.860	35.571 #
22) L5 AR-1248-2	5.056	5.043	2722714	3233500	9.823	21.654 #
23) L5 AR-1248-3	5.279	5.111	3446646	2432654	10.107	15.357 #
24) L5 AR-1248-4	5.631	5.261	5566316	2844457	11.681	15.582 #
25) L5 AR-1248-5	5.673	5.616	4496702	3190915	13.280	18.171 #
26) L6 AR-1254-1	5.631	5.616	5566316	3190915	10.837	11.782
27) L6 AR-1254-2	5.766	5.744	5660962	2762235	12.429	11.508
28) L6 AR-1254-3	6.171	6.153	2237397	1378329	3.107	3.671
29) L6 AR-1254-4	6.398	6.394	1282132	3465678	2.922	15.921 #
30) L6 AR-1254-5	6.823	6.800	573829	1374840	0.903	4.260 #
31) L7 AR-1260-1	6.308	6.308	1195154	3815746	2.614	16.304 #
32) L7 AR-1260-2	6.475	6.450	7870037	5254048	14.162	18.726 #
33) L7 AR-1260-3	6.864	6.632	647492	997314	1.396	3.784 #
34) L7 AR-1260-4	7.130	7.101	3835031	177328	9.016	0.834 #
35) L7 AR-1260-5	7.364	7.334	15665750	1868615	16.119	3.861 #
36) L8 AR-1262-1	6.864	6.834	647492	281113	0.983	0.832
37) L8 AR-1262-2	7.364	7.334	15665750	1868615	14.092	3.238 #
38) L8 AR-1262-3	7.646	7.617	697512	-26637	1.597	N.D. #
39) L8 AR-1262-4	7.714	7.688	746902	221119	0.926	0.540 #
40) L8 AR-1262-5	8.209	8.194	245465	979321	0.692	5.299 #
41) L9 AR-1268-1	7.646	7.617	697512	-26637	0.561	N.D. #

Data Path : Z:\pestpcbsrv\HPCHEM1\ECD_0\Data\PO120924\
 Data File : PO108415.D
 Signal(s) : Signal #1: ECD1A.ch Signal #2: ECD2B.ch
 Acq On : 09 Dec 2024 19:16
 Operator : YP/AJ
 Sample : I.BLK
 Misc :
 ALS Vial : 2 Sample Multiplier: 1

Instrument :
 ECD_0
 ClientSampleId :

Integration File signal 1: autoint1.e
 Integration File signal 2: autoint2.e
 Quant Time: Dec 10 01:40:47 2024
 Quant Method : Z:\pestpcbsrv\HPCHEM1\ECD_0\methods\PO120624.M
 Quant Title : GC EXTRACTABLES
 QLast Update : Sat Dec 07 05:58:15 2024
 Response via : Initial Calibration
 Integrator: ChemStation

Volume Inj. : 2 µl
 Signal #1 Phase : ZB-MR1 Signal #2 Phase: ZB-MR2
 Signal #1 Info : 30Mx0.32mmx 0.50µ Signal #2 Info : 30M x 0.32mm x 0.25µm

	Compound	RT#1	RT#2	Resp#1	Resp#2	ng/ml	ng/ml
42)	L9 AR-1268-2	7.714	7.688	746902	221119	0.666	0.380 #
43)	L9 AR-1268-3	7.925	7.890	2057199	2091332	2.270	4.192 #
44)	L9 AR-1268-4	8.209	8.194	245465	979321	0.634	4.823 #
45)	L9 AR-1268-5	8.517	8.474	1539899	516471	0.556	0.348 #

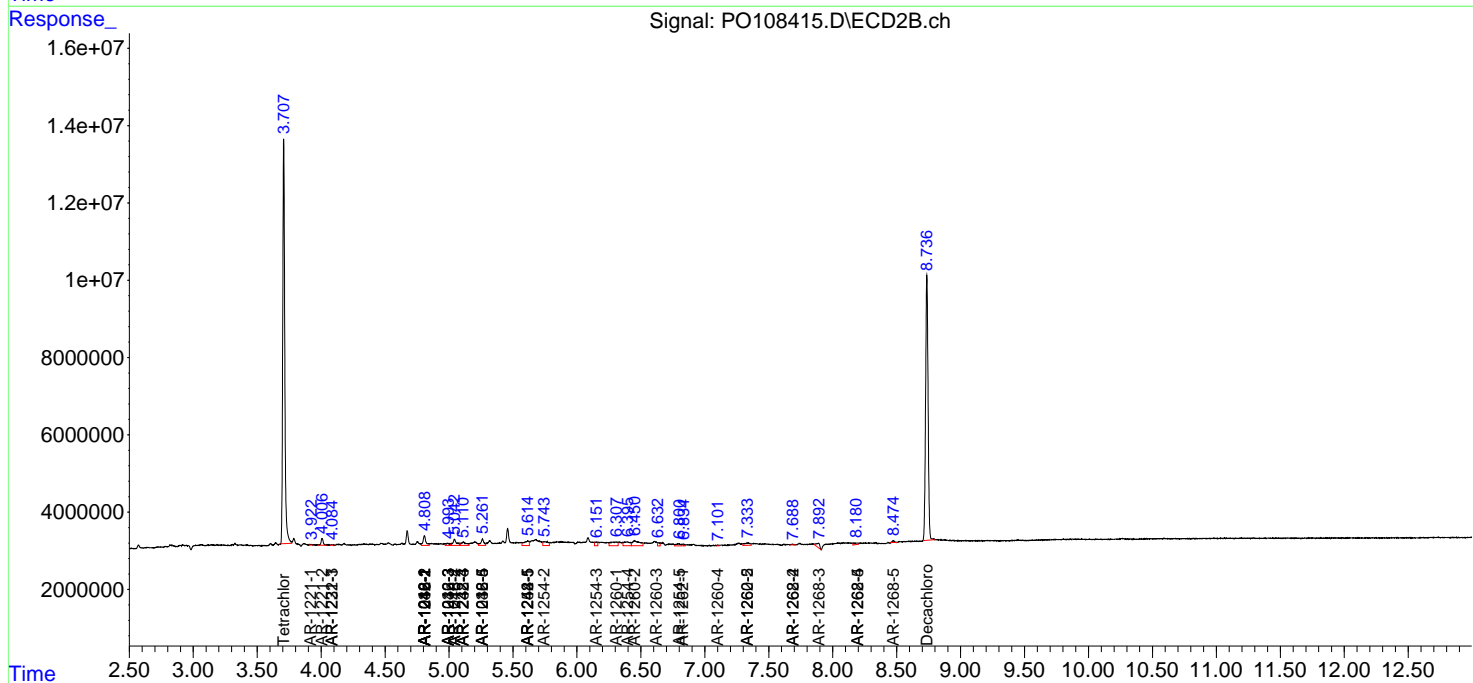
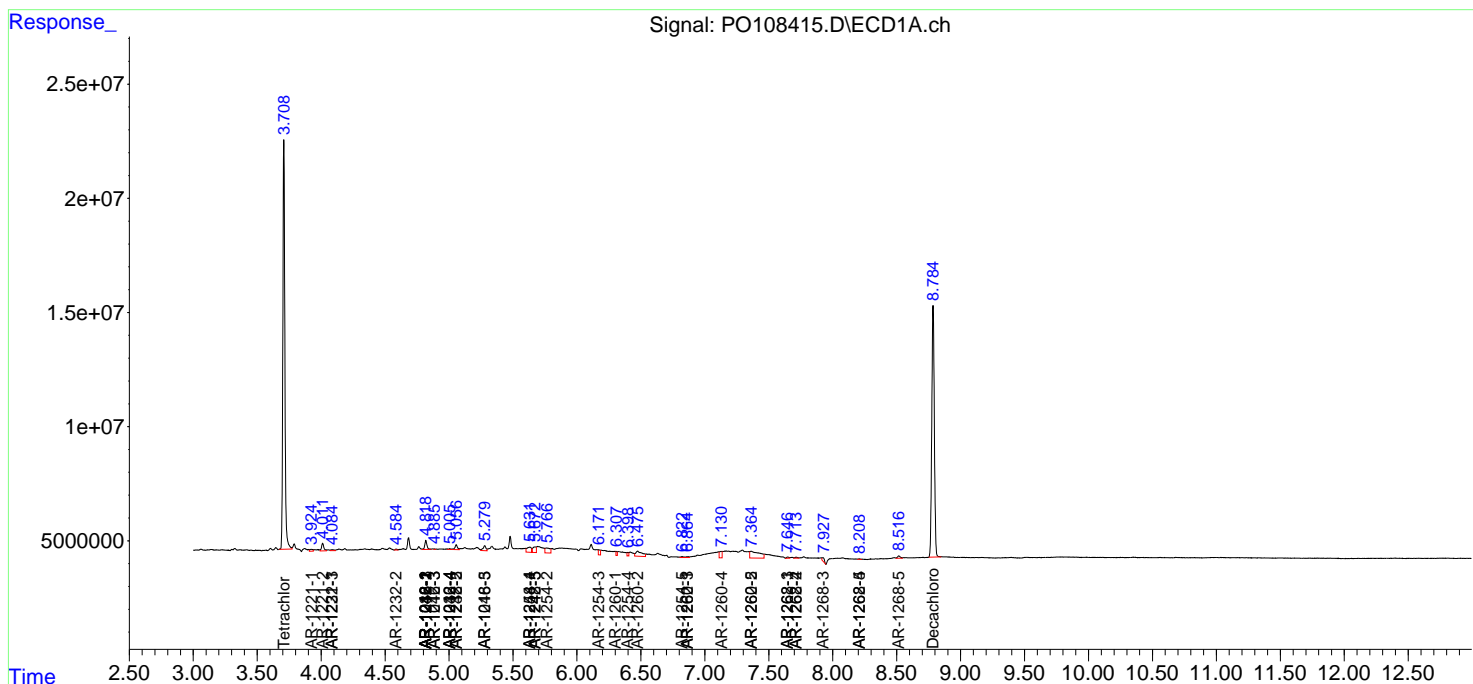
(f)=RT Delta > 1/2 Window (#)=Amounts differ by > 25% (m)=manual int.

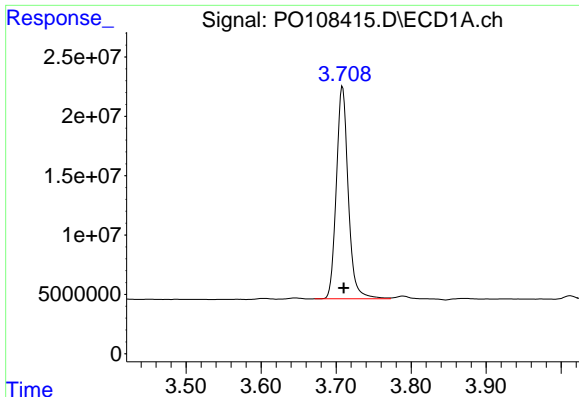
Data Path : Z:\pestpcbsrv\HPCHEM1\ECD_O\Data\PO120924\
 Data File : PO108415.D
 Signal(s) : Signal #1: ECD1A.ch Signal #2: ECD2B.ch
 Acq On : 09 Dec 2024 19:16
 Operator : YP/AJ
 Sample : I.BLK
 Misc :
 ALS Vial : 2 Sample Multiplier: 1

Instrument :
 ECD_O
 ClientSampleId :

Integration File signal 1: autoint1.e
 Integration File signal 2: autoint2.e
 Quant Time: Dec 10 01:40:47 2024
 Quant Method : Z:\pestpcbsrv\HPCHEM1\ECD_O\methods\PO120624.M
 Quant Title : GC EXTRACTABLES
 QLast Update : Sat Dec 07 05:58:15 2024
 Response via : Initial Calibration
 Integrator: ChemStation

Volume Inj. : 2 µl
 Signal #1 Phase : ZB-MR1 Signal #2 Phase: ZB-MR2
 Signal #1 Info : 30Mx0.32mmx 0.50µ Signal #2 Info : 30M x 0.32mm x 0.25µm

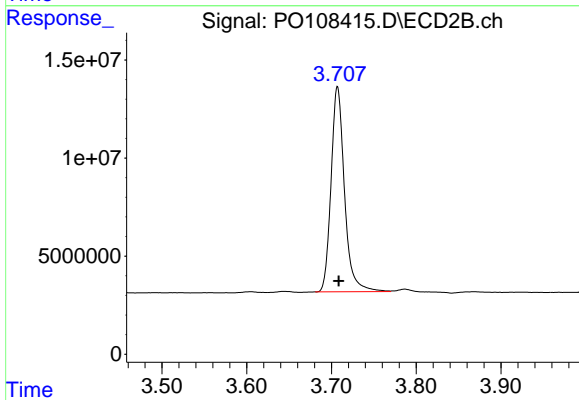




#1 Tetrachloro-m-xylene

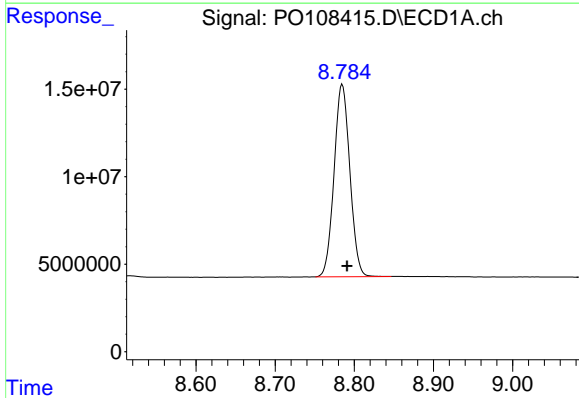
R.T.: 3.709 min
 Delta R.T.: -0.001 min
 Response: 197388717
 Conc: 22.69 ng/ml

Instrument :
 ECD_O
 ClientSampleId :



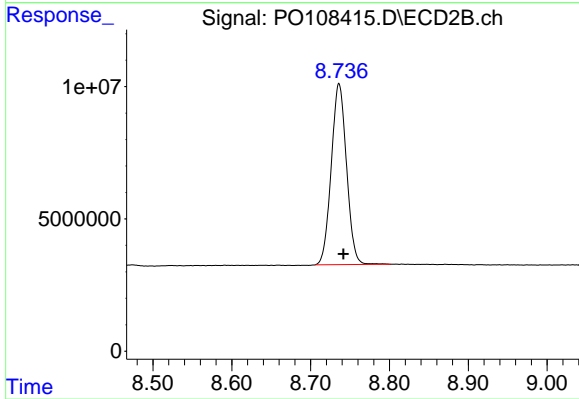
#1 Tetrachloro-m-xylene

R.T.: 3.707 min
 Delta R.T.: -0.001 min
 Response: 115269653
 Conc: 22.74 ng/ml



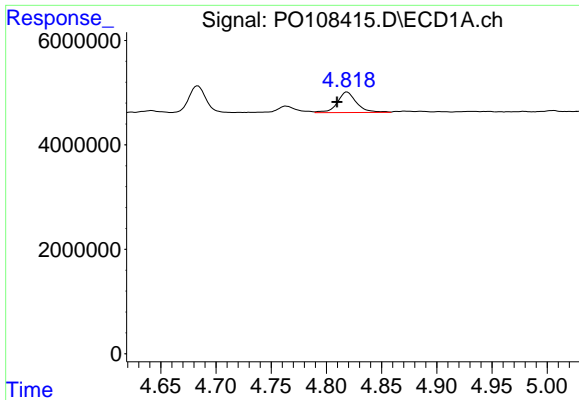
#2 Decachlorobiphenyl

R.T.: 8.785 min
 Delta R.T.: -0.006 min
 Response: 152262076
 Conc: 20.85 ng/ml



#2 Decachlorobiphenyl

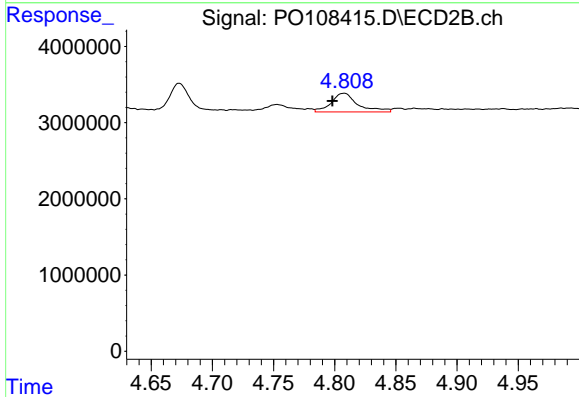
R.T.: 8.736 min
 Delta R.T.: -0.005 min
 Response: 92089264
 Conc: 23.77 ng/ml



#3 AR-1016-1

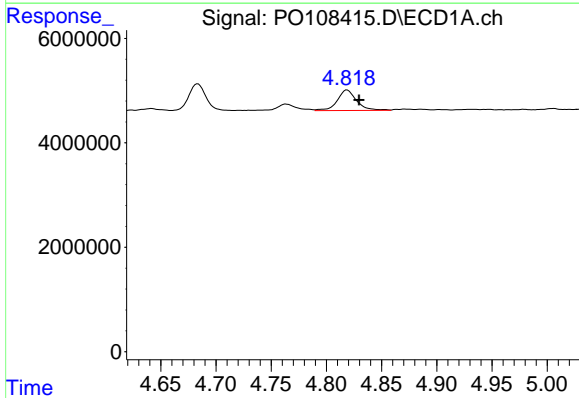
R.T.: 4.819 min
 Delta R.T.: 0.009 min
 Response: 4778417
 Conc: 15.49 ng/ml

Instrument :
 ECD_O
 ClientSampleId :



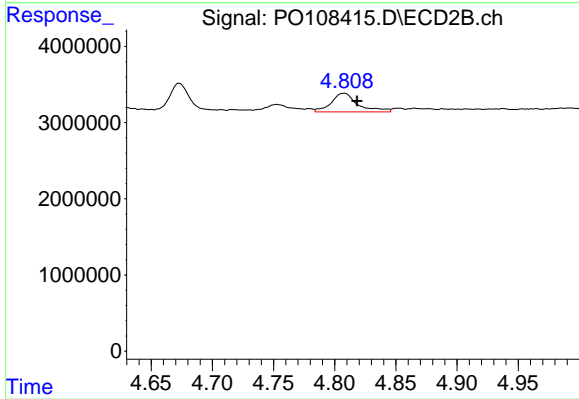
#3 AR-1016-1

R.T.: 4.808 min
 Delta R.T.: 0.009 min
 Response: 3739156
 Conc: 23.30 ng/ml



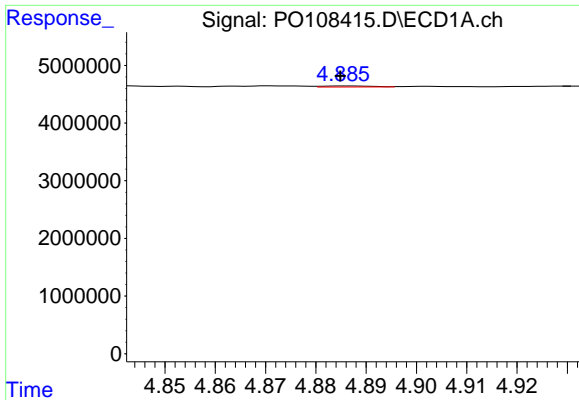
#4 AR-1016-2

R.T.: 4.819 min
 Delta R.T.: -0.011 min
 Response: 4778417
 Conc: 11.45 ng/ml



#4 AR-1016-2

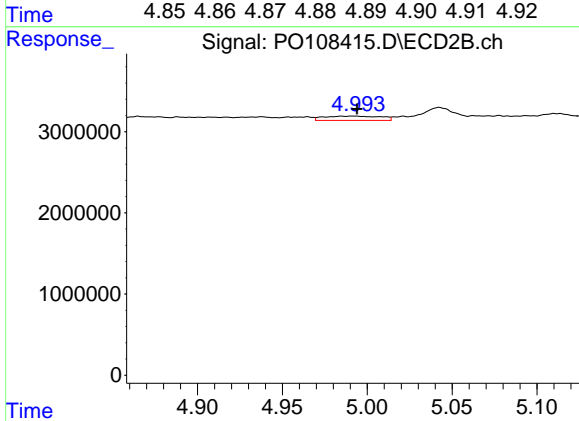
R.T.: 4.808 min
 Delta R.T.: -0.011 min
 Response: 3739156
 Conc: 16.84 ng/ml



#5 AR-1016-3

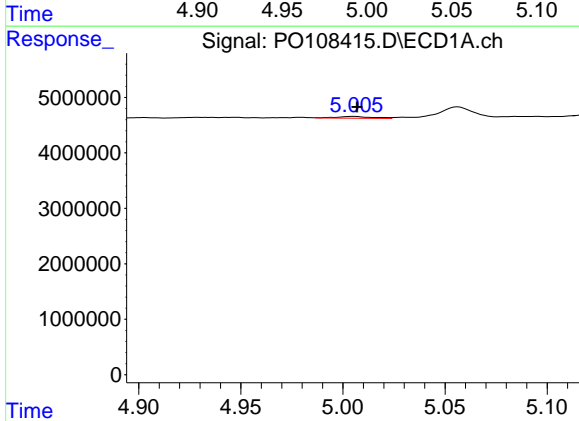
R.T.: 4.886 min
 Delta R.T.: 0.001 min
 Response: 120216
 Conc: 0.41 ng/ml

Instrument :
 ECD_O
 ClientSampleId :



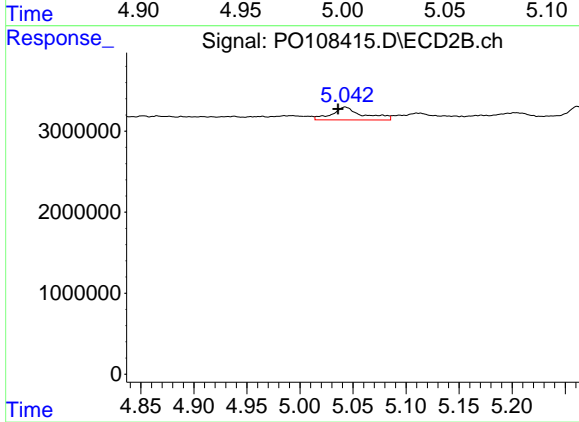
#5 AR-1016-3

R.T.: 4.985 min
 Delta R.T.: -0.009 min
 Response: 1215770
 Conc: 9.66 ng/ml



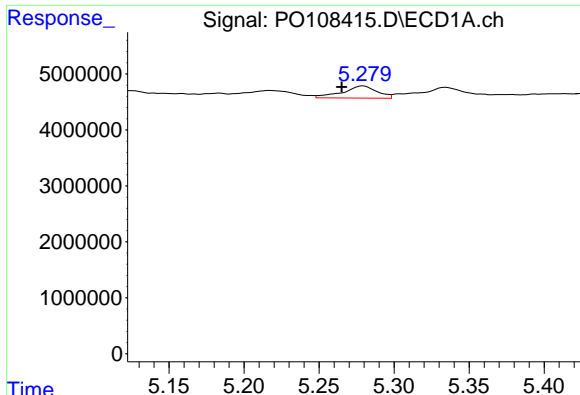
#6 AR-1016-4

R.T.: 5.006 min
 Delta R.T.: -0.001 min
 Response: 407689
 Conc: 1.76 ng/ml



#6 AR-1016-4

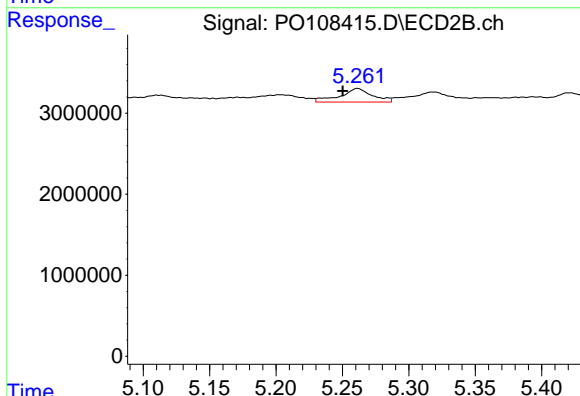
R.T.: 5.043 min
 Delta R.T.: 0.007 min
 Response: 3233500
 Conc: 30.85 ng/ml



#7 AR-1016-5

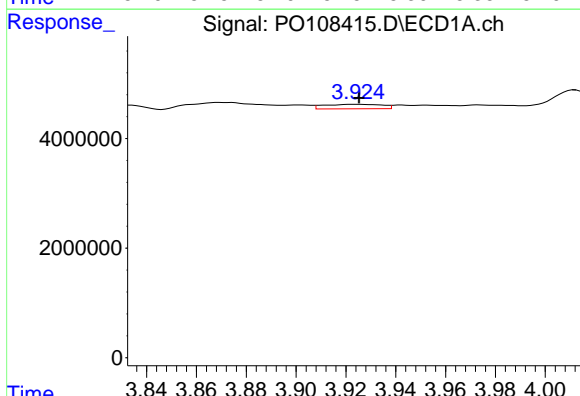
R.T.: 5.279 min
 Delta R.T.: 0.014 min
 Response: 3446646
 Conc: 13.70 ng/ml

Instrument :
 ECD_O
 ClientSampleId :



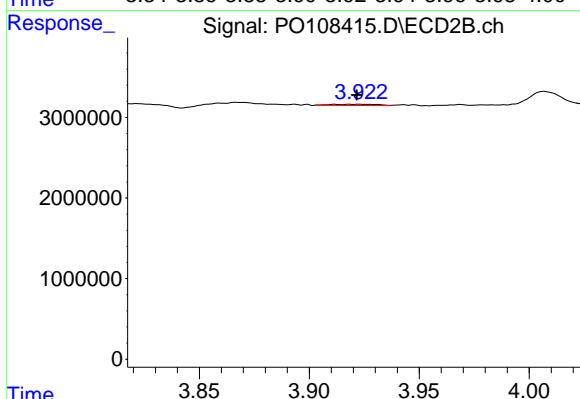
#7 AR-1016-5

R.T.: 5.261 min
 Delta R.T.: 0.011 min
 Response: 2844457
 Conc: 21.04 ng/ml



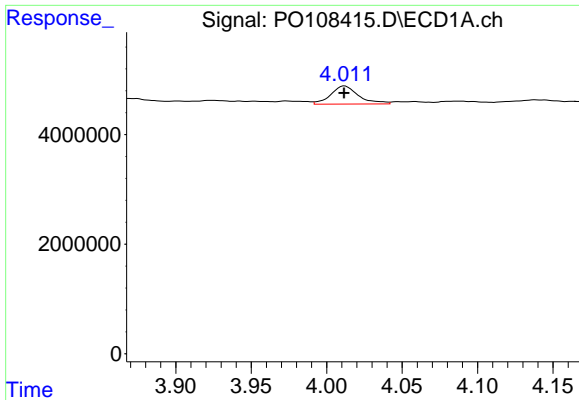
#8 AR-1221-1

R.T.: 3.924 min
 Delta R.T.: -0.001 min
 Response: 1331748
 Conc: 11.77 ng/ml



#8 AR-1221-1

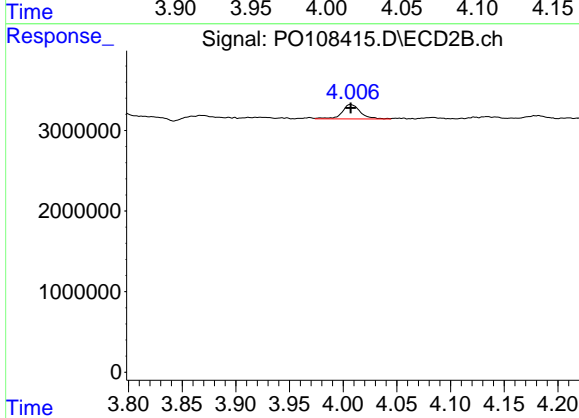
R.T.: 3.923 min
 Delta R.T.: 0.001 min
 Response: 210977
 Conc: 3.40 ng/ml



#9 AR-1221-2

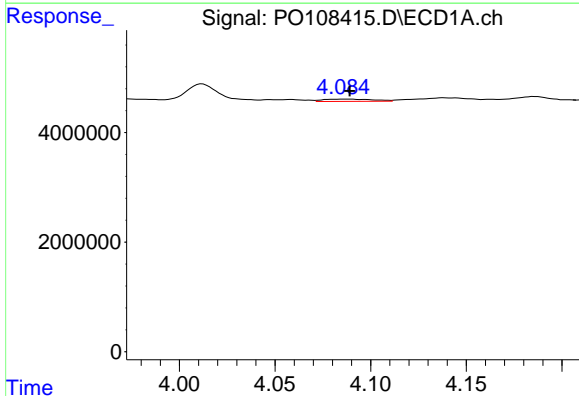
R.T.: 4.012 min
 Delta R.T.: 0.000 min
 Response: 4270729
 Conc: 49.25 ng/ml

Instrument :
 ECD_O
 ClientSampleId :



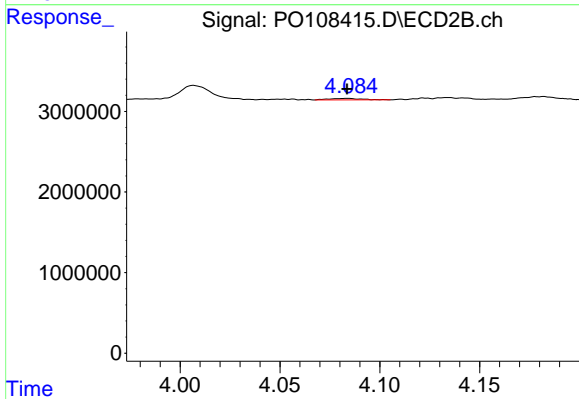
#9 AR-1221-2

R.T.: 4.007 min
 Delta R.T.: 0.000 min
 Response: 2131635
 Conc: 44.93 ng/ml



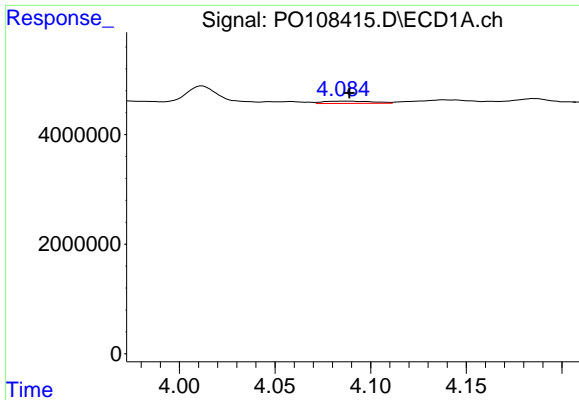
#10 AR-1221-3

R.T.: 4.085 min
 Delta R.T.: -0.004 min
 Response: 771225
 Conc: 3.03 ng/ml



#10 AR-1221-3

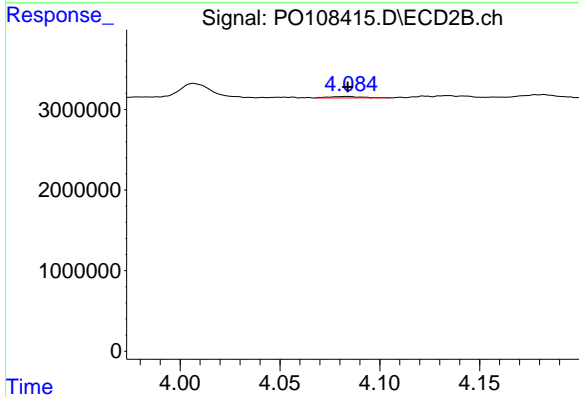
R.T.: 4.084 min
 Delta R.T.: 0.000 min
 Response: 208778
 Conc: 1.49 ng/ml



#11 AR-1232-1

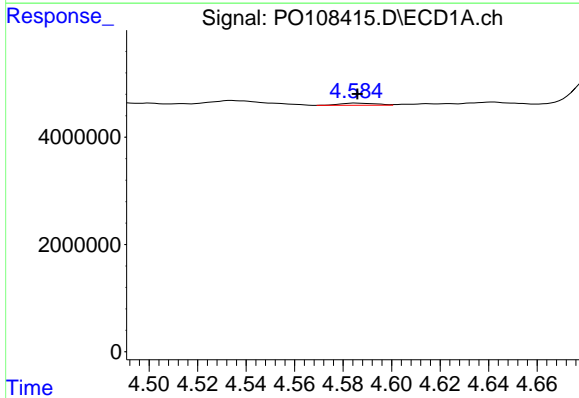
R.T.: 4.085 min
 Delta R.T.: -0.004 min
 Response: 771225
 Conc: 3.77 ng/ml

Instrument :
 ECD_O
 ClientSampleId :



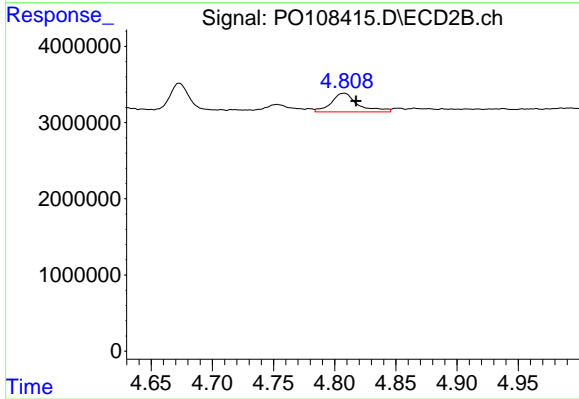
#11 AR-1232-1

R.T.: 4.084 min
 Delta R.T.: 0.000 min
 Response: 208778
 Conc: 1.86 ng/ml



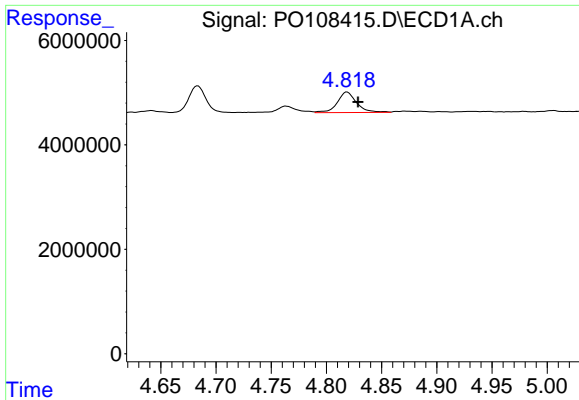
#12 AR-1232-2

R.T.: 4.585 min
 Delta R.T.: 0.000 min
 Response: 416181
 Conc: 3.64 ng/ml



#12 AR-1232-2

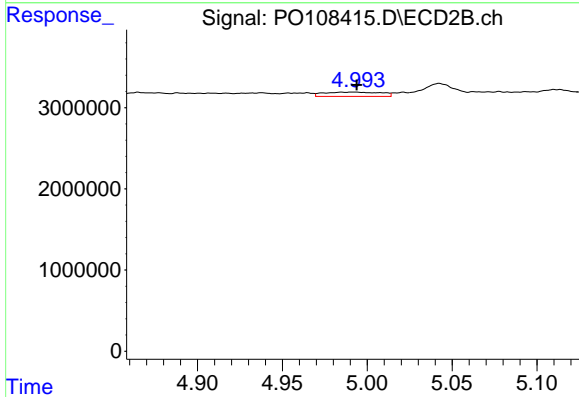
R.T.: 4.808 min
 Delta R.T.: -0.010 min
 Response: 3739156
 Conc: 35.36 ng/ml



#13 AR-1232-3

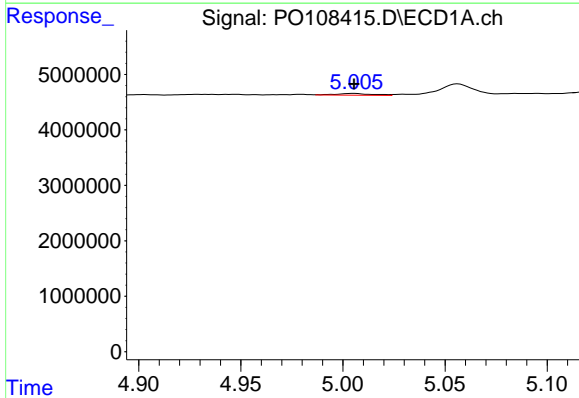
R.T.: 4.819 min
 Delta R.T.: -0.010 min
 Response: 4778417
 Conc: 24.20 ng/ml

Instrument :
 ECD_O
 ClientSampleId :



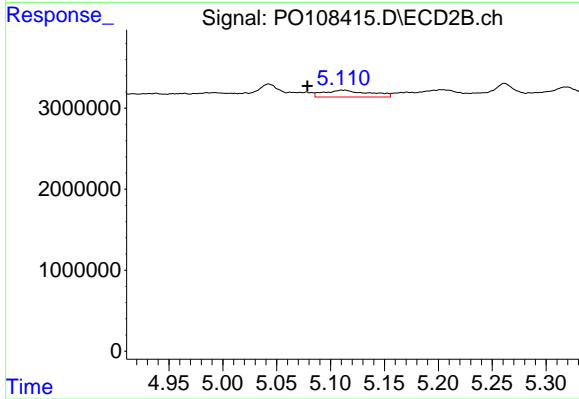
#13 AR-1232-3

R.T.: 4.985 min
 Delta R.T.: -0.009 min
 Response: 1215770
 Conc: 20.15 ng/ml



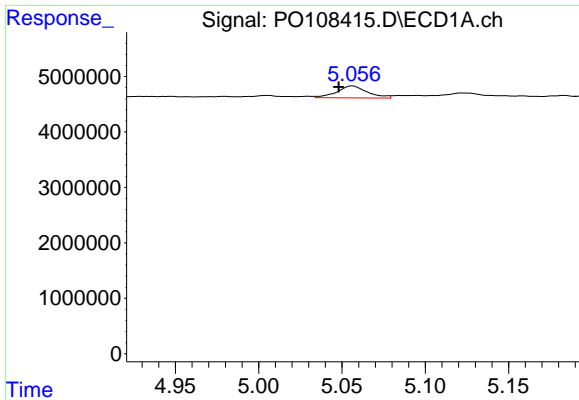
#14 AR-1232-4

R.T.: 5.006 min
 Delta R.T.: 0.000 min
 Response: 407689
 Conc: 3.76 ng/ml



#14 AR-1232-4

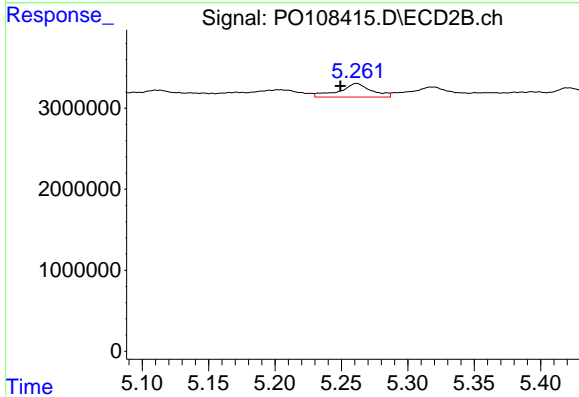
R.T.: 5.111 min
 Delta R.T.: 0.032 min
 Response: 2432654
 Conc: 43.79 ng/ml



#15 AR-1232-5

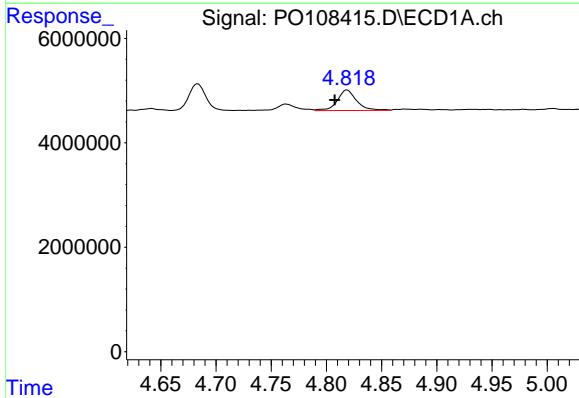
R.T.: 5.056 min
 Delta R.T.: 0.008 min
 Response: 2722714
 Conc: 34.76 ng/ml

Instrument :
 ECD_O
 ClientSampleId :



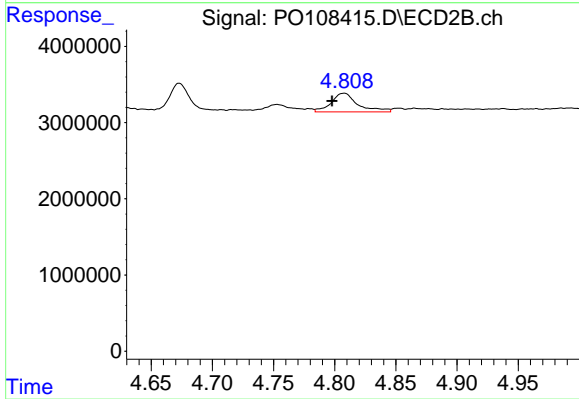
#15 AR-1232-5

R.T.: 5.261 min
 Delta R.T.: 0.012 min
 Response: 2844457
 Conc: 49.40 ng/ml



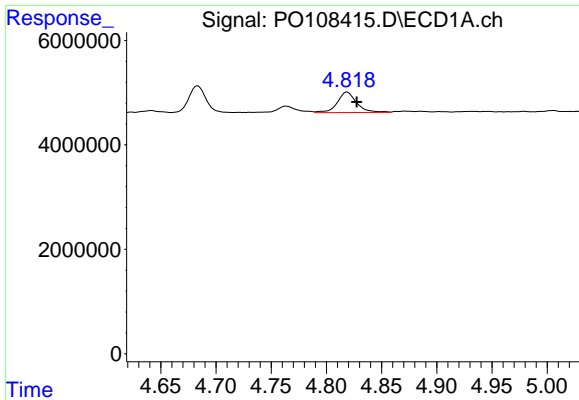
#16 AR-1242-1

R.T.: 4.819 min
 Delta R.T.: 0.011 min
 Response: 4778417
 Conc: 18.57 ng/ml



#16 AR-1242-1

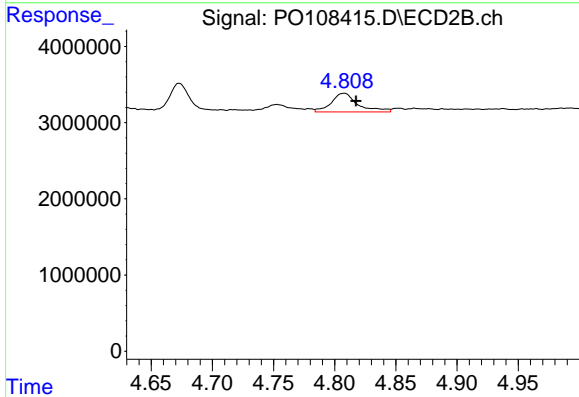
R.T.: 4.808 min
 Delta R.T.: 0.010 min
 Response: 3739156
 Conc: 27.54 ng/ml



#17 AR-1242-2

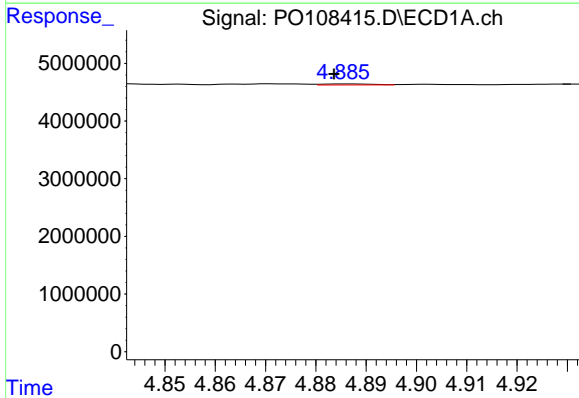
R.T.: 4.819 min
 Delta R.T.: -0.009 min
 Response: 4778417
 Conc: 13.84 ng/ml

Instrument :
 ECD_O
 ClientSampleId :



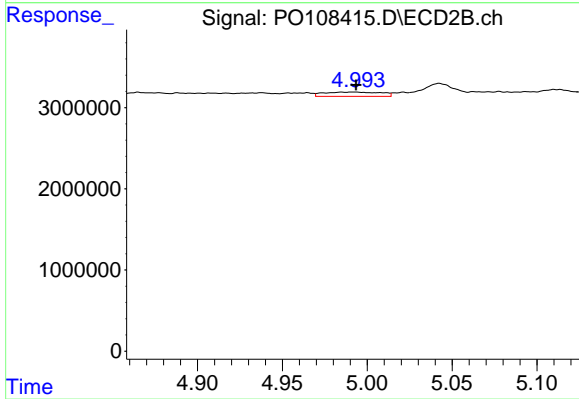
#17 AR-1242-2

R.T.: 4.808 min
 Delta R.T.: -0.010 min
 Response: 3739156
 Conc: 20.16 ng/ml



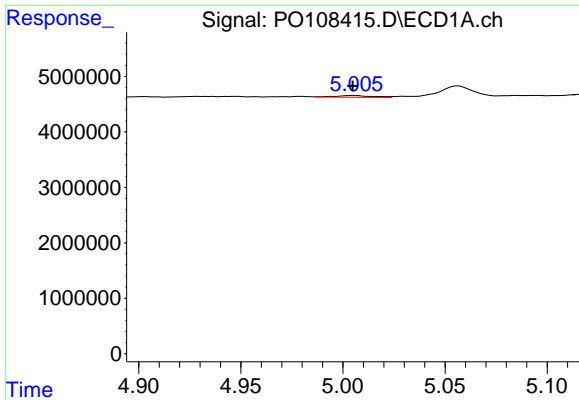
#18 AR-1242-3

R.T.: 4.886 min
 Delta R.T.: 0.002 min
 Response: 120216
 Conc: 0.50 ng/ml



#18 AR-1242-3

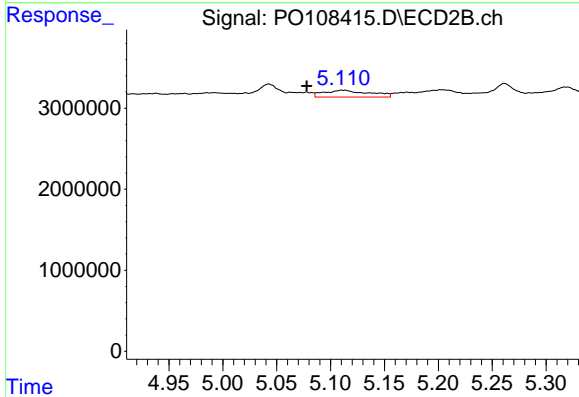
R.T.: 4.985 min
 Delta R.T.: -0.008 min
 Response: 1215770
 Conc: 11.54 ng/ml



#19 AR-1242-4

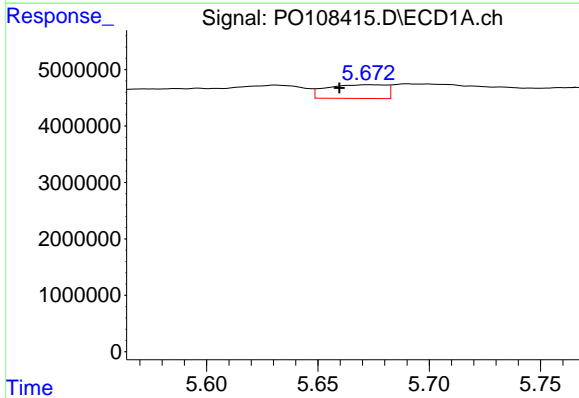
R.T.: 5.006 min
 Delta R.T.: 0.000 min
 Response: 407689
 Conc: 2.14 ng/ml

Instrument :
 ECD_O
 ClientSampleId :



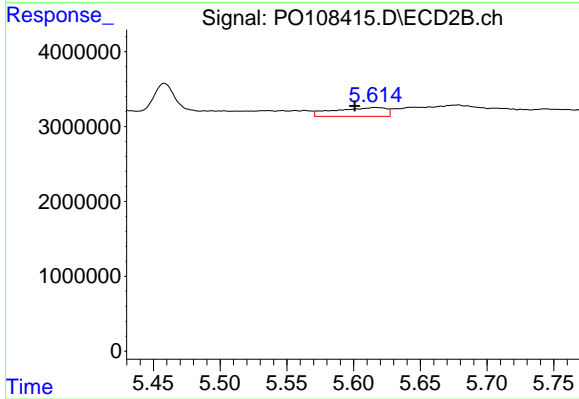
#19 AR-1242-4

R.T.: 5.111 min
 Delta R.T.: 0.033 min
 Response: 2432654
 Conc: 22.67 ng/ml



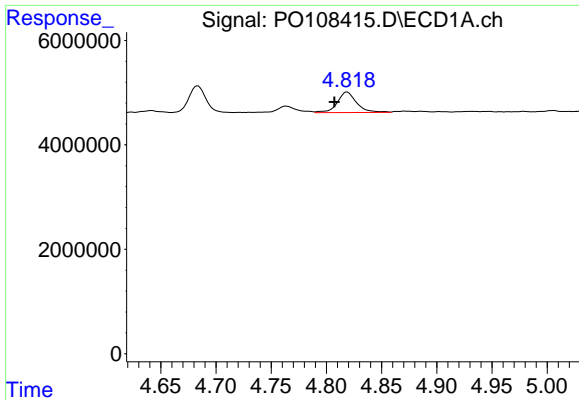
#20 AR-1242-5

R.T.: 5.673 min
 Delta R.T.: 0.013 min
 Response: 4496702
 Conc: 21.65 ng/ml



#20 AR-1242-5

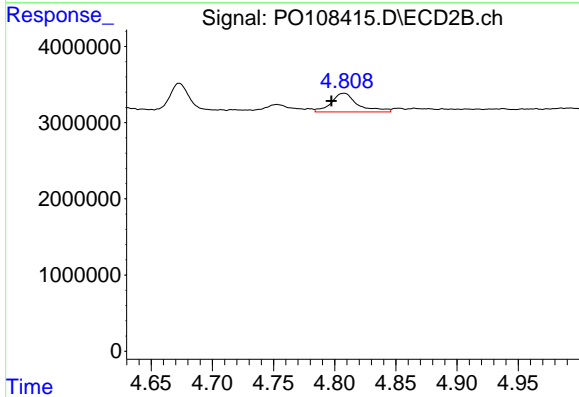
R.T.: 5.616 min
 Delta R.T.: 0.015 min
 Response: 3190915
 Conc: 25.24 ng/ml



#21 AR-1248-1

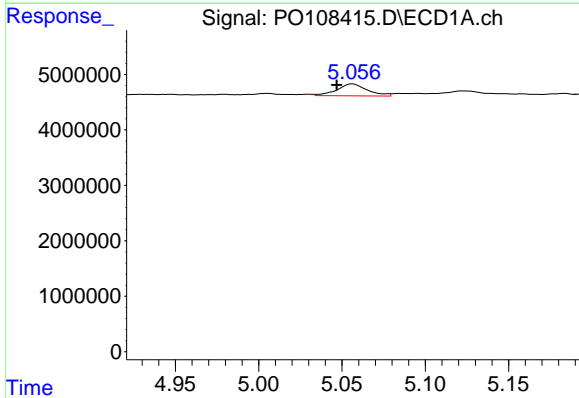
R.T.: 4.819 min
 Delta R.T.: 0.011 min
 Response: 4778417
 Conc: 23.86 ng/ml

Instrument :
 ECD_O
 ClientSampleId :



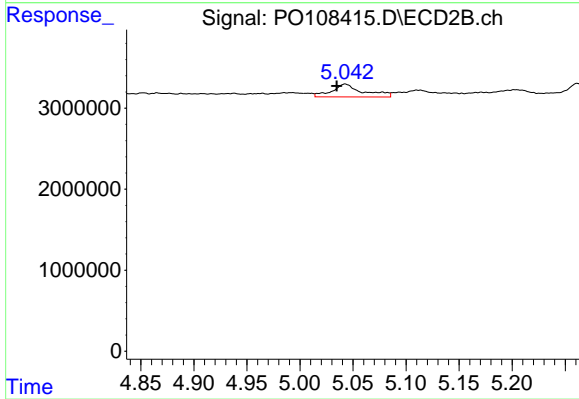
#21 AR-1248-1

R.T.: 4.808 min
 Delta R.T.: 0.010 min
 Response: 3739156
 Conc: 35.57 ng/ml



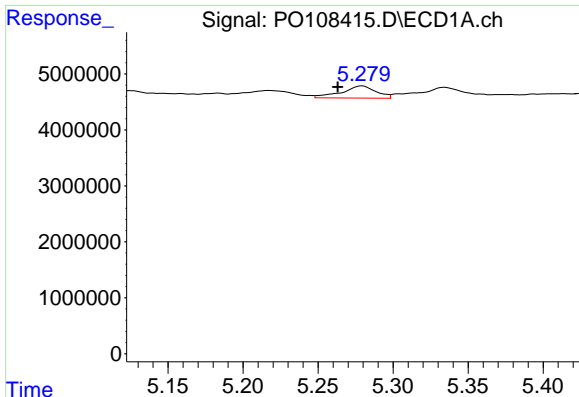
#22 AR-1248-2

R.T.: 5.056 min
 Delta R.T.: 0.009 min
 Response: 2722714
 Conc: 9.82 ng/ml



#22 AR-1248-2

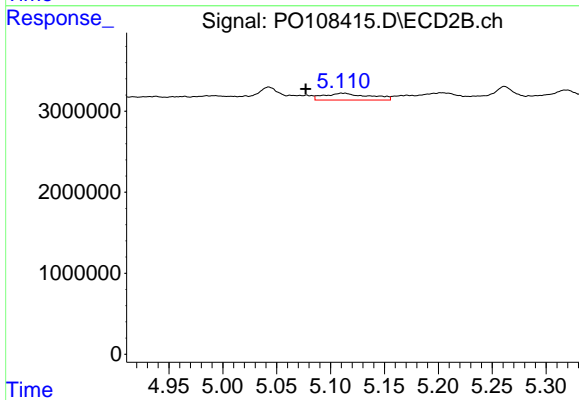
R.T.: 5.043 min
 Delta R.T.: 0.008 min
 Response: 3233500
 Conc: 21.65 ng/ml



#23 AR-1248-3

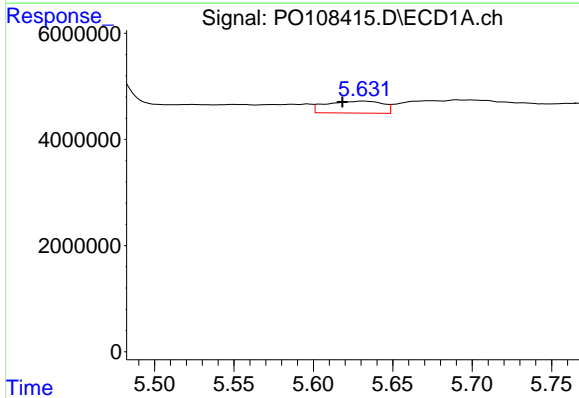
R.T.: 5.279 min
 Delta R.T.: 0.016 min
 Response: 3446646
 Conc: 10.11 ng/ml

Instrument :
 ECD_O
 ClientSampleId :



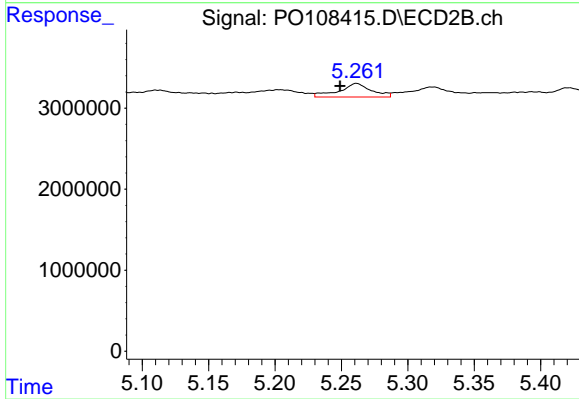
#23 AR-1248-3

R.T.: 5.111 min
 Delta R.T.: 0.034 min
 Response: 2432654
 Conc: 15.36 ng/ml



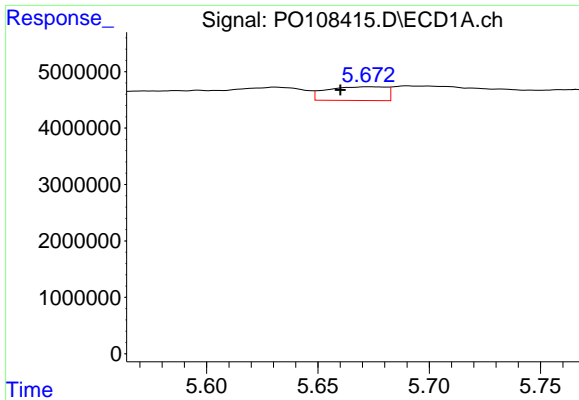
#24 AR-1248-4

R.T.: 5.631 min
 Delta R.T.: 0.013 min
 Response: 5566316
 Conc: 11.68 ng/ml



#24 AR-1248-4

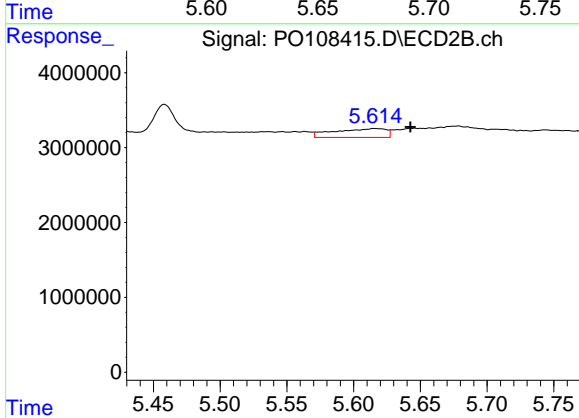
R.T.: 5.261 min
 Delta R.T.: 0.012 min
 Response: 2844457
 Conc: 15.58 ng/ml



#25 AR-1248-5

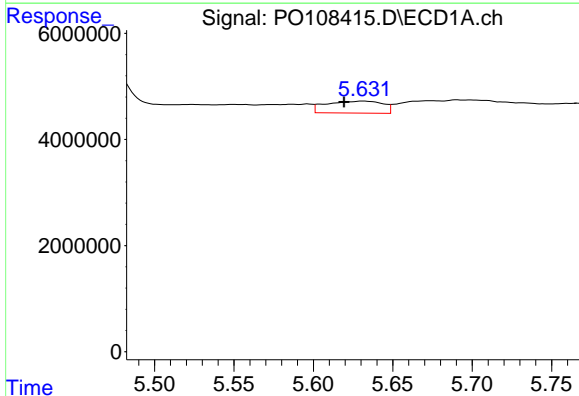
R.T.: 5.673 min
 Delta R.T.: 0.013 min
 Response: 4496702
 Conc: 13.28 ng/ml

Instrument :
 ECD_O
 ClientSampleId :



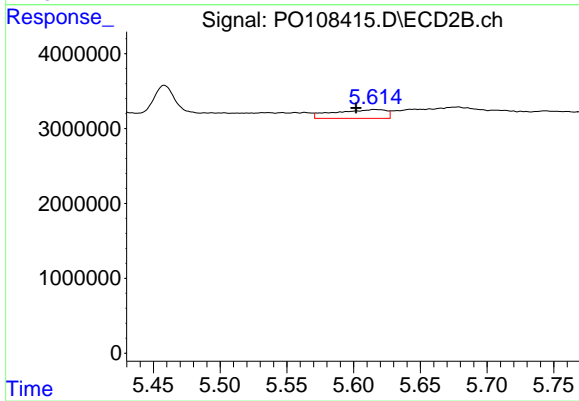
#25 AR-1248-5

R.T.: 5.616 min
 Delta R.T.: -0.027 min
 Response: 3190915
 Conc: 18.17 ng/ml



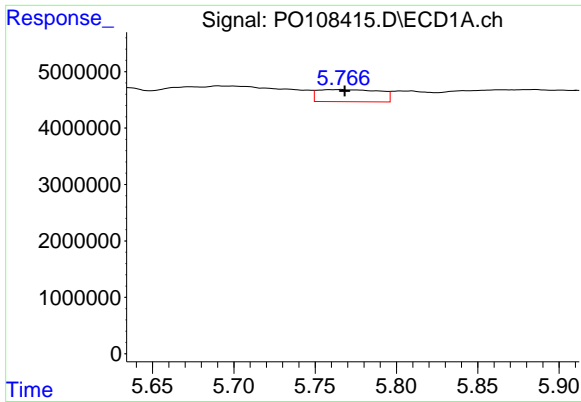
#26 AR-1254-1

R.T.: 5.631 min
 Delta R.T.: 0.012 min
 Response: 5566316
 Conc: 10.84 ng/ml



#26 AR-1254-1

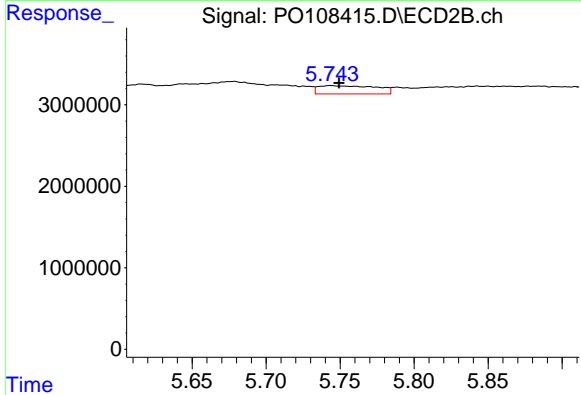
R.T.: 5.616 min
 Delta R.T.: 0.014 min
 Response: 3190915
 Conc: 11.78 ng/ml



#27 AR-1254-2

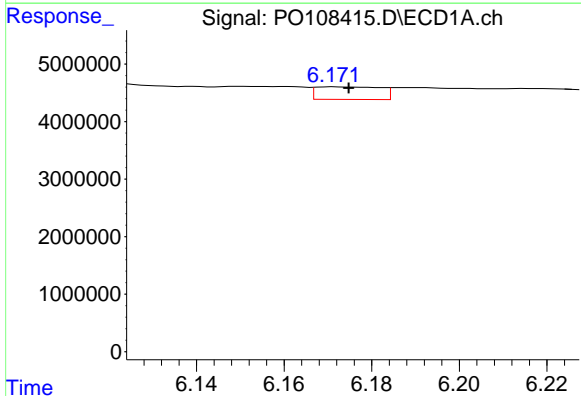
R.T.: 5.766 min
 Delta R.T.: -0.002 min
 Response: 5660962
 Conc: 12.43 ng/ml

Instrument :
 ECD_O
 ClientSampleId :



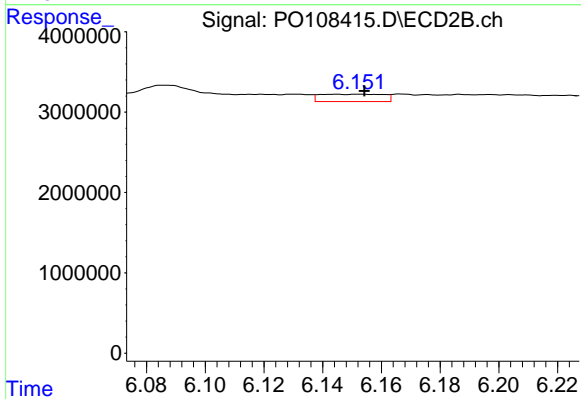
#27 AR-1254-2

R.T.: 5.744 min
 Delta R.T.: -0.006 min
 Response: 2762235
 Conc: 11.51 ng/ml



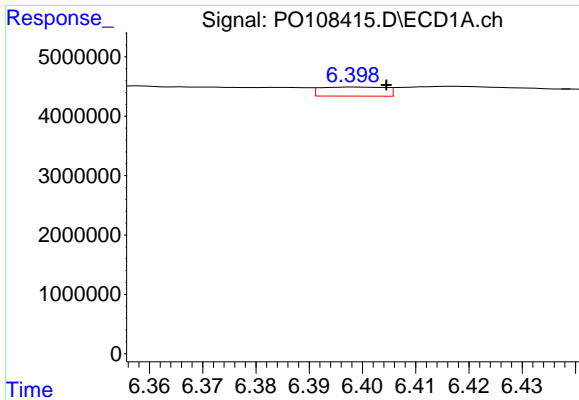
#28 AR-1254-3

R.T.: 6.171 min
 Delta R.T.: -0.003 min
 Response: 2237397
 Conc: 3.11 ng/ml



#28 AR-1254-3

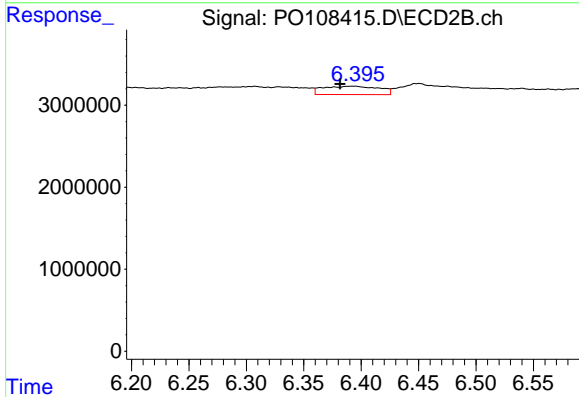
R.T.: 6.153 min
 Delta R.T.: -0.002 min
 Response: 1378329
 Conc: 3.67 ng/ml



#29 AR-1254-4

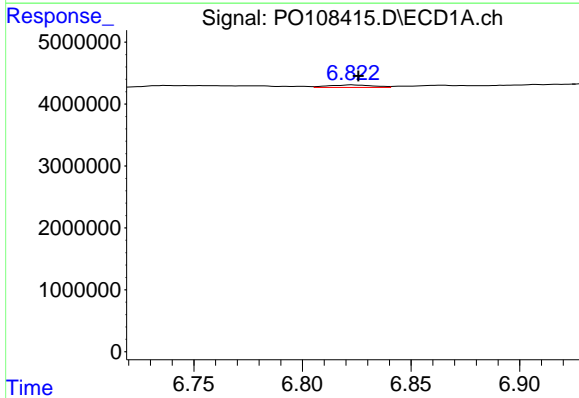
R.T.: 6.398 min
 Delta R.T.: -0.006 min
 Response: 1282132
 Conc: 2.92 ng/ml

Instrument :
 ECD_O
 ClientSampleId :



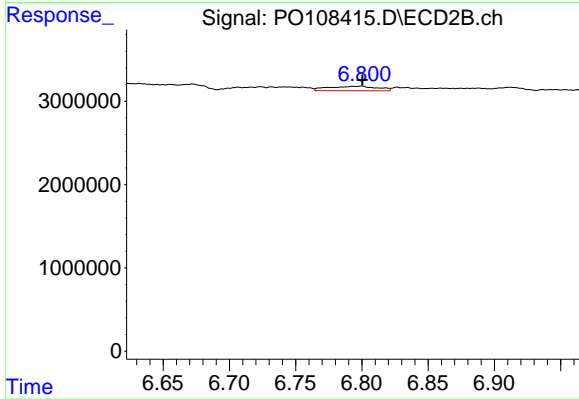
#29 AR-1254-4

R.T.: 6.394 min
 Delta R.T.: 0.013 min
 Response: 3465678
 Conc: 15.92 ng/ml



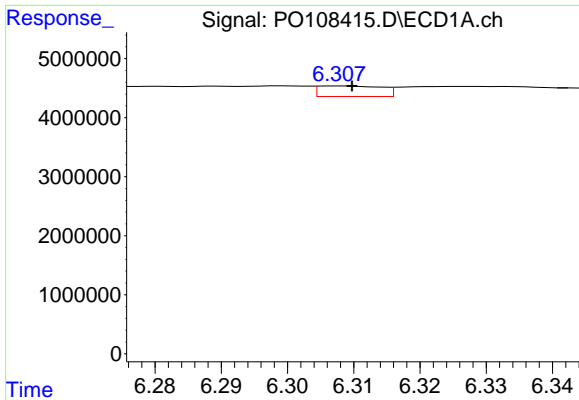
#30 AR-1254-5

R.T.: 6.823 min
 Delta R.T.: -0.003 min
 Response: 573829
 Conc: 0.90 ng/ml



#30 AR-1254-5

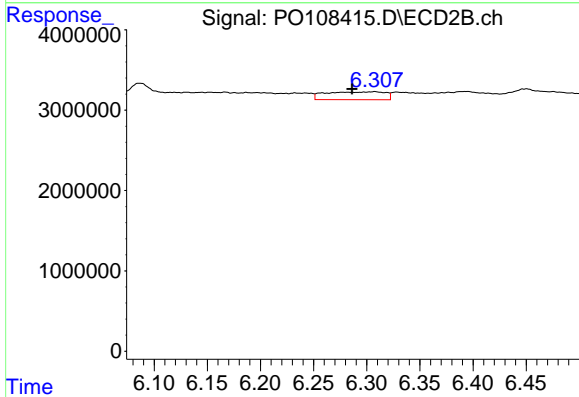
R.T.: 6.800 min
 Delta R.T.: 0.000 min
 Response: 1374840
 Conc: 4.26 ng/ml



#31 AR-1260-1

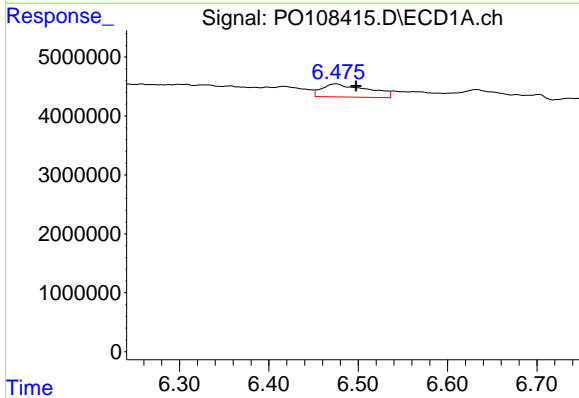
R.T.: 6.308 min
 Delta R.T.: -0.002 min
 Response: 1195154
 Conc: 2.61 ng/ml

Instrument :
 ECD_O
 ClientSampleId :



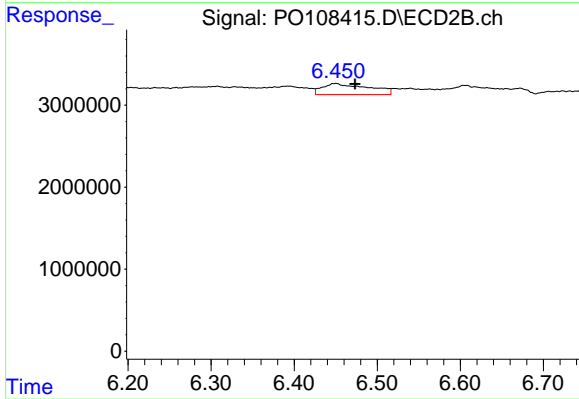
#31 AR-1260-1

R.T.: 6.308 min
 Delta R.T.: 0.021 min
 Response: 3815746
 Conc: 16.30 ng/ml



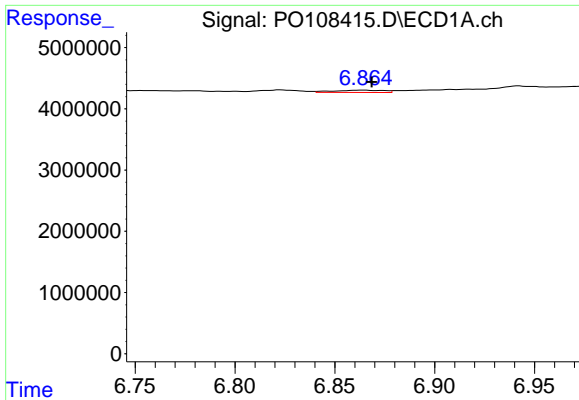
#32 AR-1260-2

R.T.: 6.475 min
 Delta R.T.: -0.023 min
 Response: 7870037
 Conc: 14.16 ng/ml



#32 AR-1260-2

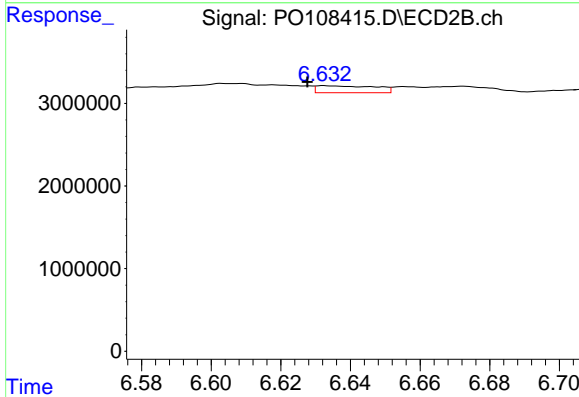
R.T.: 6.450 min
 Delta R.T.: -0.023 min
 Response: 5254048
 Conc: 18.73 ng/ml



#33 AR-1260-3

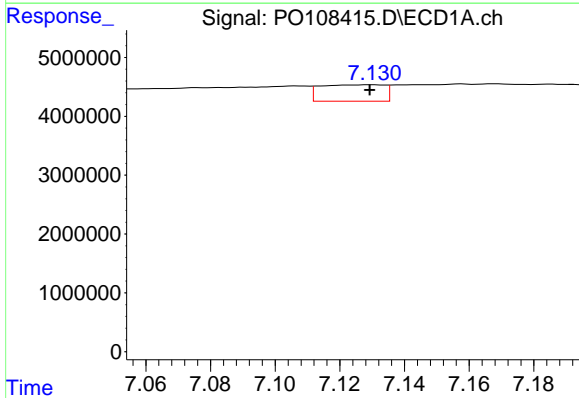
R.T.: 6.864 min
 Delta R.T.: -0.004 min
 Response: 647492
 Conc: 1.40 ng/ml

Instrument :
 ECD_O
 ClientSampleId :



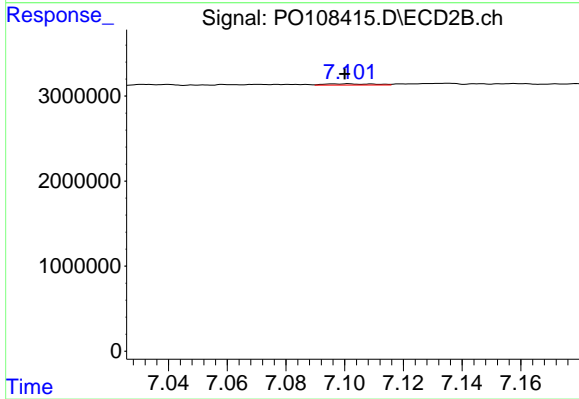
#33 AR-1260-3

R.T.: 6.632 min
 Delta R.T.: 0.005 min
 Response: 997314
 Conc: 3.78 ng/ml



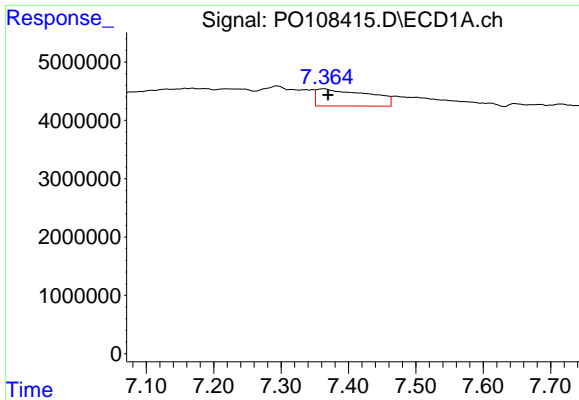
#34 AR-1260-4

R.T.: 7.130 min
 Delta R.T.: 0.000 min
 Response: 3835031
 Conc: 9.02 ng/ml



#34 AR-1260-4

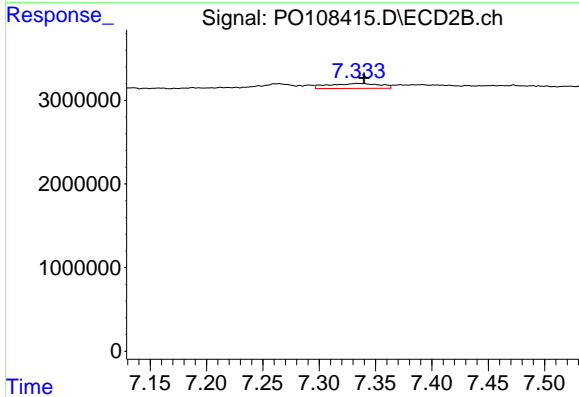
R.T.: 7.101 min
 Delta R.T.: 0.001 min
 Response: 177328
 Conc: 0.83 ng/ml



#35 AR-1260-5

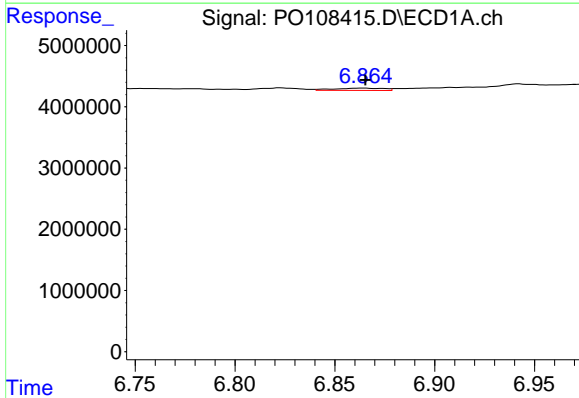
R.T.: 7.364 min
 Delta R.T.: -0.006 min
 Response: 15665750
 Conc: 16.12 ng/ml

Instrument :
 ECD_O
 ClientSampleId :



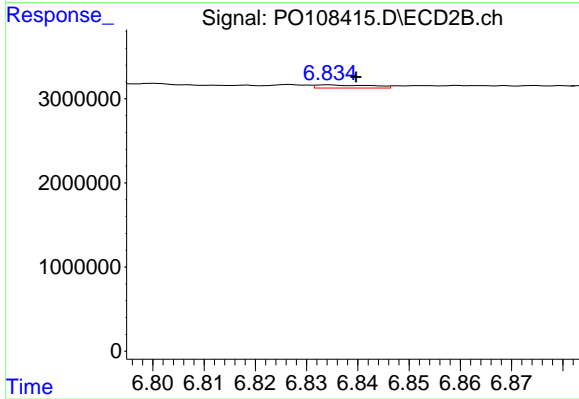
#35 AR-1260-5

R.T.: 7.334 min
 Delta R.T.: -0.006 min
 Response: 1868615
 Conc: 3.86 ng/ml



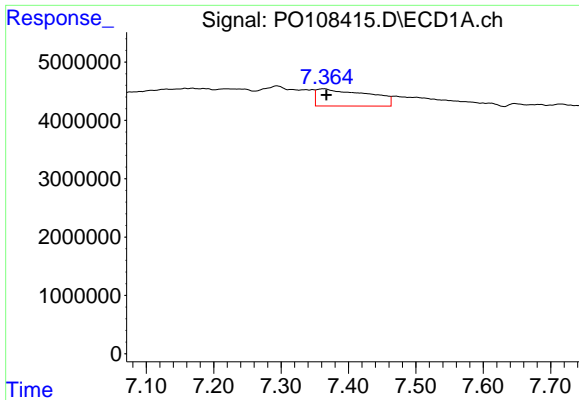
#36 AR-1262-1

R.T.: 6.864 min
 Delta R.T.: 0.000 min
 Response: 647492
 Conc: 0.98 ng/ml



#36 AR-1262-1

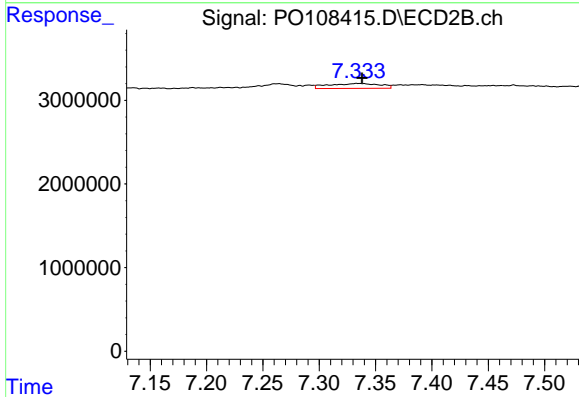
R.T.: 6.834 min
 Delta R.T.: -0.006 min
 Response: 281113
 Conc: 0.83 ng/ml



#37 AR-1262-2

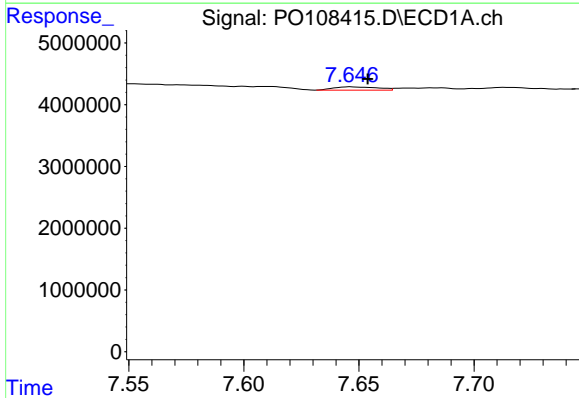
R.T.: 7.364 min
 Delta R.T.: -0.003 min
 Response: 15665750
 Conc: 14.09 ng/ml

Instrument :
 ECD_O
 ClientSampleId :



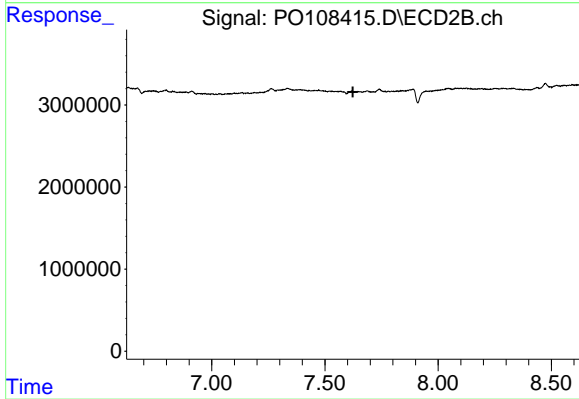
#37 AR-1262-2

R.T.: 7.334 min
 Delta R.T.: -0.004 min
 Response: 1868615
 Conc: 3.27 ng/ml



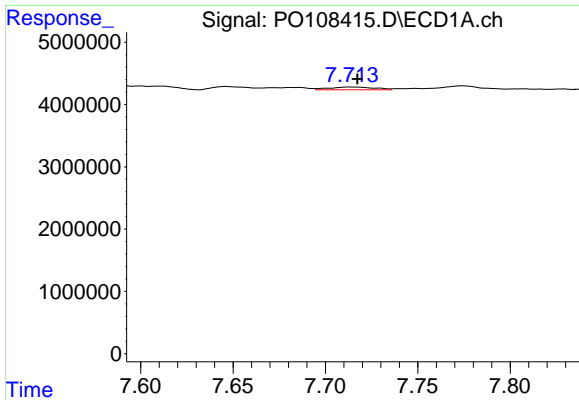
#38 AR-1262-3

R.T.: 7.646 min
 Delta R.T.: -0.007 min
 Response: 697512
 Conc: 1.60 ng/ml



#38 AR-1262-3

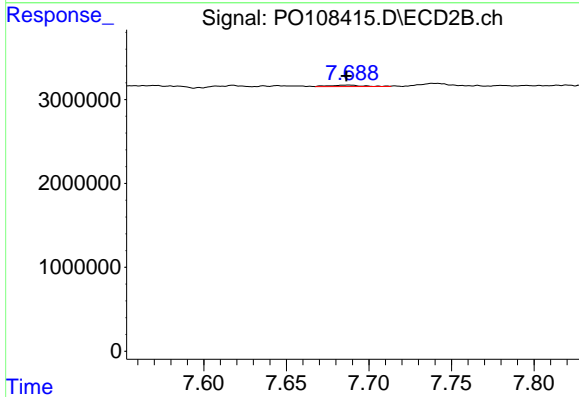
R.T.: 7.617 min
 Delta R.T.: -0.006 min
 Response: -26637
 Conc: N.D.



#39 AR-1262-4

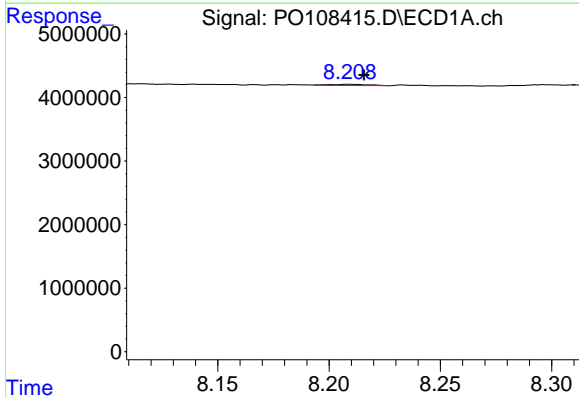
R.T.: 7.714 min
 Delta R.T.: -0.003 min
 Response: 746902
 Conc: 0.93 ng/ml

Instrument :
 ECD_O
 ClientSampleId :



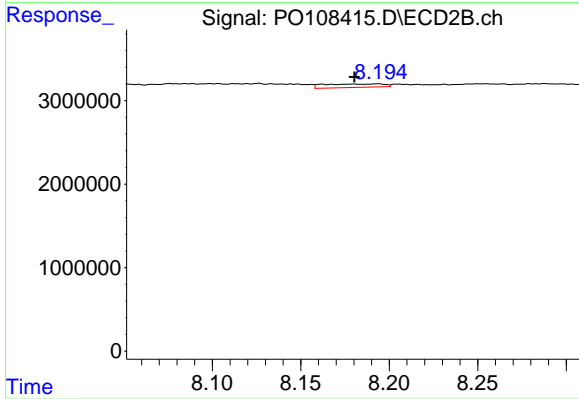
#39 AR-1262-4

R.T.: 7.688 min
 Delta R.T.: 0.001 min
 Response: 221119
 Conc: 0.54 ng/ml



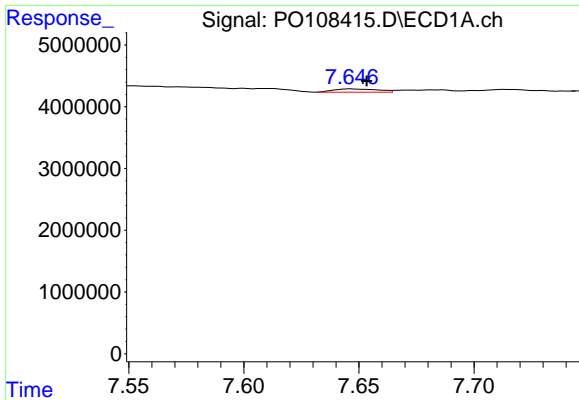
#40 AR-1262-5

R.T.: 8.209 min
 Delta R.T.: -0.007 min
 Response: 245465
 Conc: 0.69 ng/ml



#40 AR-1262-5

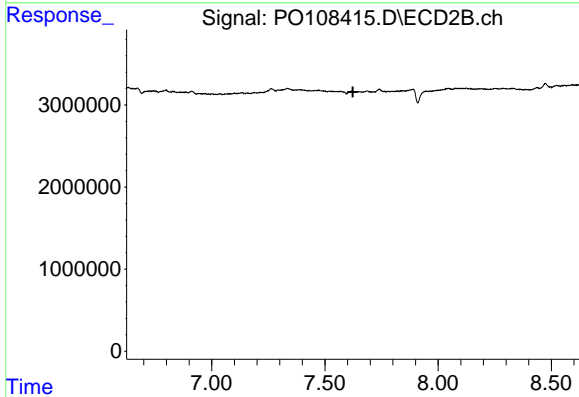
R.T.: 8.194 min
 Delta R.T.: 0.013 min
 Response: 979321
 Conc: 5.30 ng/ml



#41 AR-1268-1

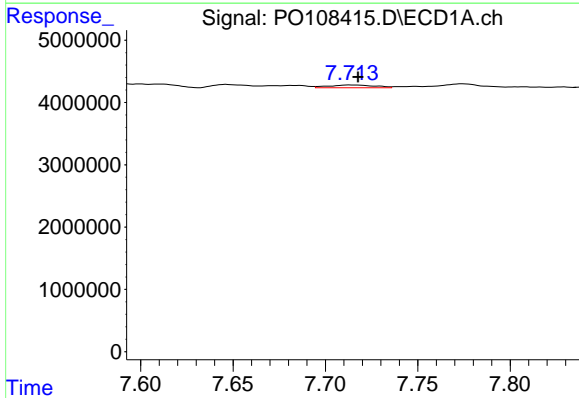
R.T.: 7.646 min
 Delta R.T.: -0.007 min
 Response: 697512
 Conc: 0.56 ng/ml

Instrument :
 ECD_O
 ClientSampleId :



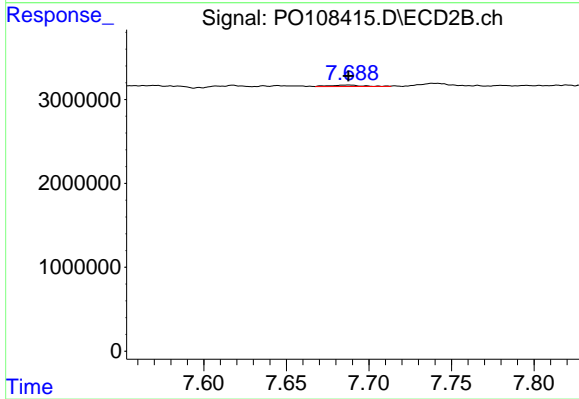
#41 AR-1268-1

R.T.: 7.617 min
 Delta R.T.: -0.006 min
 Response: -26637
 Conc: N.D.



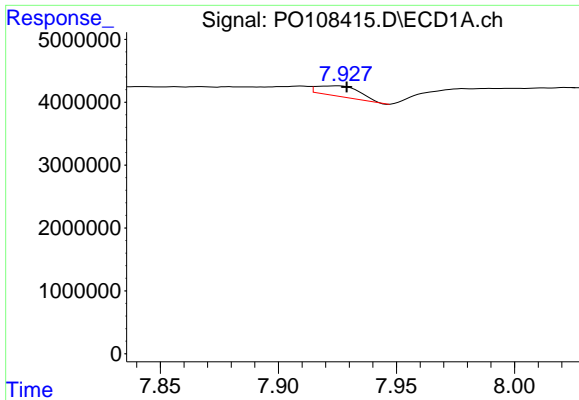
#42 AR-1268-2

R.T.: 7.714 min
 Delta R.T.: -0.004 min
 Response: 746902
 Conc: 0.67 ng/ml



#42 AR-1268-2

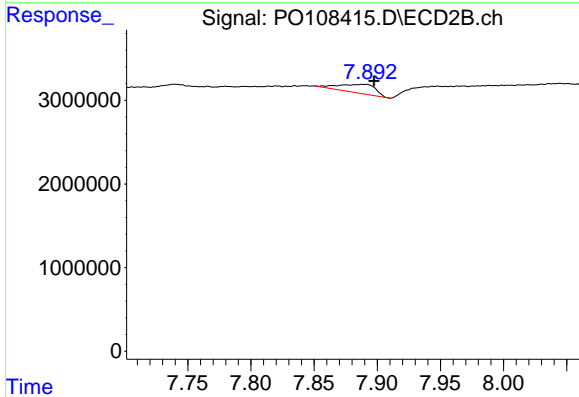
R.T.: 7.688 min
 Delta R.T.: 0.000 min
 Response: 221119
 Conc: 0.38 ng/ml



#43 AR-1268-3

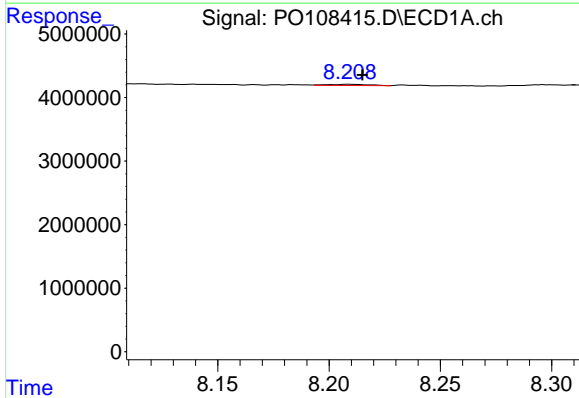
R.T.: 7.925 min
 Delta R.T.: -0.004 min
 Response: 2057199
 Conc: 2.27 ng/ml

Instrument :
 ECD_O
 ClientSampleId :



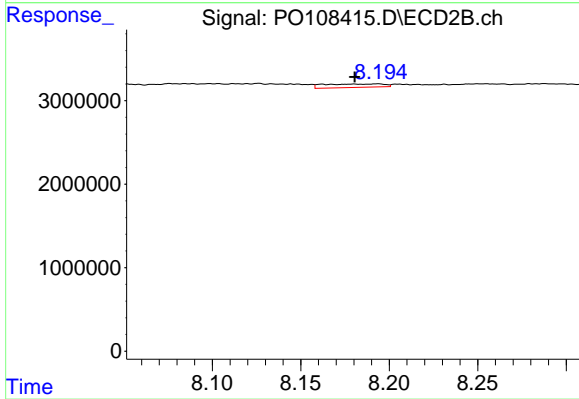
#43 AR-1268-3

R.T.: 7.890 min
 Delta R.T.: -0.007 min
 Response: 2091332
 Conc: 4.19 ng/ml



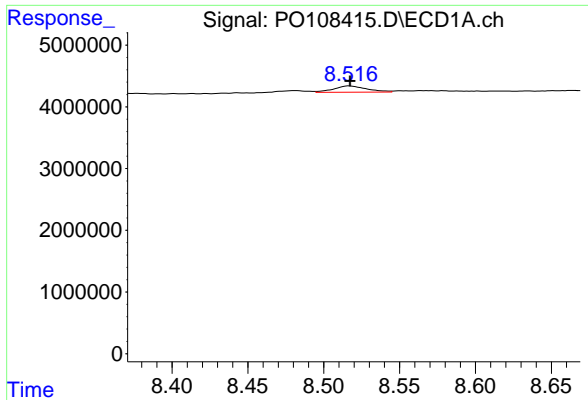
#44 AR-1268-4

R.T.: 8.209 min
 Delta R.T.: -0.006 min
 Response: 245465
 Conc: 0.63 ng/ml



#44 AR-1268-4

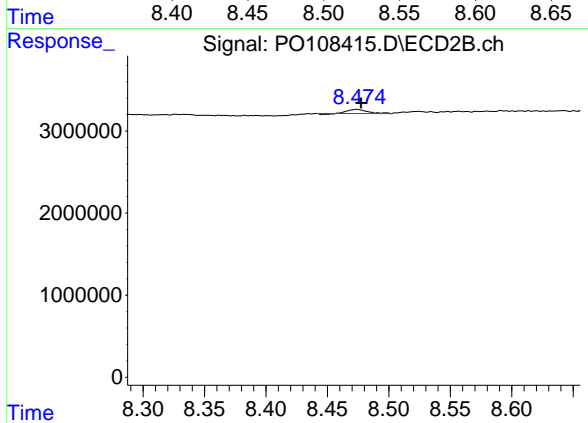
R.T.: 8.194 min
 Delta R.T.: 0.013 min
 Response: 979321
 Conc: 4.82 ng/ml



#45 AR-1268-5

R.T.: 8.517 min
Delta R.T.: 0.000 min
Response: 1539899
Conc: 0.56 ng/ml

Instrument :
ECD_O
ClientSampleId :



#45 AR-1268-5

R.T.: 8.474 min
Delta R.T.: -0.003 min
Response: 516471
Conc: 0.35 ng/ml