

Data Path : Z:\pestpcbsrv\HPCHEM1\ECD_O\Data\PO120924\
 Data File : PO108422.D
 Signal(s) : Signal #1: ECD1A.ch Signal #2: ECD2B.ch
 Acq On : 09 Dec 2024 21:24
 Operator : YP/AJ
 Sample : P5162-02
 Misc :
 ALS Vial : 23 Sample Multiplier: 1

Instrument :
 ECD_O
 ClientSampleId :

Integration File signal 1: autoint1.e
 Integration File signal 2: autoint2.e
 Quant Time: Dec 10 01:44:25 2024
 Quant Method : Z:\pestpcbsrv\HPCHEM1\ECD_O\methods\PO120624.M
 Quant Title : GC EXTRACTABLES
 QLast Update : Sat Dec 07 05:58:15 2024
 Response via : Initial Calibration
 Integrator: ChemStation

Volume Inj. : 2 µl
 Signal #1 Phase : ZB-MR1 Signal #2 Phase: ZB-MR2
 Signal #1 Info : 30Mx0.32mmx 0.50µ Signal #2 Info : 30M x 0.32mm x 0.25µm

Compound	RT#1	RT#2	Resp#1	Resp#2	ng/ml	ng/ml
System Monitoring Compounds						
1) SA Tetrachlo...	3.709	3.707	185.5E6	110.8E6	21.316	21.854
2) SA Decachlor...	8.784	8.734	120.2E6	76576447	16.457	19.762
Target Compounds						
3) L1 AR-1016-1	4.806	4.793	6635267	8549409	21.512	53.276 #
4) L1 AR-1016-2	4.828	4.814	4329942	6938611	10.373	31.242 #
5) L1 AR-1016-3	4.882	4.996	3373517	10134107	11.528	80.536 #
6) L1 AR-1016-4	5.007	5.034	3419280	7733924	14.791	73.793 #
7) L1 AR-1016-5	5.260	5.245	5832704	8207358	23.176	60.700 #
8) L2 AR-1221-1	3.936	3.929	904504	429129	7.994	6.908
9) L2 AR-1221-2	4.012	4.008	6430891	2721279	74.157	57.357
10) L2 AR-1221-3	4.086	4.081	3365072	528489	13.238	3.759 #
11) L3 AR-1232-1	4.086	4.081	3365072	528489	16.433	4.716 #
12) L3 AR-1232-2	4.591	4.814	9931445	6938611	86.849	65.611
13) L3 AR-1232-3	4.828	4.996	4329942	10134107	21.926	167.930 #
14) L3 AR-1232-4	5.007	5.072	3419280	8185266	31.549	147.332 #
15) L3 AR-1232-5	5.048	5.245	2042918	8207358	26.081	142.548 #
16) L4 AR-1242-1	4.806	4.793	6635267	8549409	25.786	62.971 #
17) L4 AR-1242-2	4.828	4.814	4329942	6938611	12.545	37.413 #
18) L4 AR-1242-3	4.882	4.996	3373517	10134107	13.986	96.165 #
19) L4 AR-1242-4	5.007	5.072	3419280	8185266	17.929	76.264 #
20) L4 AR-1242-5	5.680	5.605	8293894	8686663	39.938	68.724 #
21) L5 AR-1248-1	4.806	4.793	6635267	8549409	33.131	81.331 #
22) L5 AR-1248-2	5.048	5.034	2042918	7733924	7.370	51.792 #
23) L5 AR-1248-3	5.260	5.072	5832704	8185266	17.105	51.671 #
24) L5 AR-1248-4	5.626	5.245	10762405	8207358	22.585	44.959 #
25) L5 AR-1248-5	5.680	5.668	8293894	7395505	24.494	42.115 #
26) L6 AR-1254-1	5.626	5.605	10762405	8686663	20.953	32.074 #
27) L6 AR-1254-2	5.769	5.748	7111116	3539951	15.613	14.749
28) L6 AR-1254-3	6.170	6.152	11473417	3488382	15.932	9.290 #
29) L6 AR-1254-4	6.406	6.375	10454463	4458240	23.824	20.481
30) L6 AR-1254-5	6.823	6.796	3673183	2505964	5.783	7.764 #
31) L7 AR-1260-1	6.300	6.283	4733430	1869215	10.354	7.987
32) L7 AR-1260-2	6.501	6.448	4827215	6495182	8.686	23.150 #
33) L7 AR-1260-3	6.857	6.621	1077068	2829419	2.323	10.735 #
34) L7 AR-1260-4	7.123	7.090	1724561	1779325	4.055	8.363 #
35) L7 AR-1260-5	7.358	7.326	2764749	2553370	2.845	5.276 #
36) L8 AR-1262-1	6.857	6.838	1077068	551124	1.636	1.631
37) L8 AR-1262-2	7.358	7.326	2764749	2553370	2.487	4.465 #
38) L8 AR-1262-3	7.631	7.645	2553518	33650	5.845	0.150 #
39) L8 AR-1262-4	7.720	7.683	3341752	925247	4.145	2.259 #
40) L8 AR-1262-5	8.204	8.179	1263913	68863	3.561	0.373 #
41) L9 AR-1268-1	7.631	7.603	2553518	321656	2.053	0.498 #

Data Path : Z:\pestpcbsrv\HPCHEM1\ECD_0\Data\PO120924\
 Data File : PO108422.D
 Signal(s) : Signal #1: ECD1A.ch Signal #2: ECD2B.ch
 Acq On : 09 Dec 2024 21:24
 Operator : YP/AJ
 Sample : P5162-02
 Misc :
 ALS Vial : 23 Sample Multiplier: 1

Instrument :
 ECD_0
 ClientSampleId :

Integration File signal 1: autoint1.e
 Integration File signal 2: autoint2.e
 Quant Time: Dec 10 01:44:25 2024
 Quant Method : Z:\pestpcbsrv\HPCHEM1\ECD_0\methods\PO120624.M
 Quant Title : GC EXTRACTABLES
 QLast Update : Sat Dec 07 05:58:15 2024
 Response via : Initial Calibration
 Integrator: ChemStation

Volume Inj. : 2 µl
 Signal #1 Phase : ZB-MR1 Signal #2 Phase: ZB-MR2
 Signal #1 Info : 30Mx0.32mmx 0.50µ Signal #2 Info : 30M x 0.32mm x 0.25µm

	Compound	RT#1	RT#2	Resp#1	Resp#2	ng/ml	ng/ml
42)	L9 AR-1268-2	7.720	7.683	3341752	925247	2.979	1.591 #
43)	L9 AR-1268-3	7.926	7.892	830281	531543	0.916	1.065
44)	L9 AR-1268-4	8.204	8.179	1263913	68863	3.267	0.339 #
45)	L9 AR-1268-5	8.518	8.474	2059128	865843	0.743	0.583

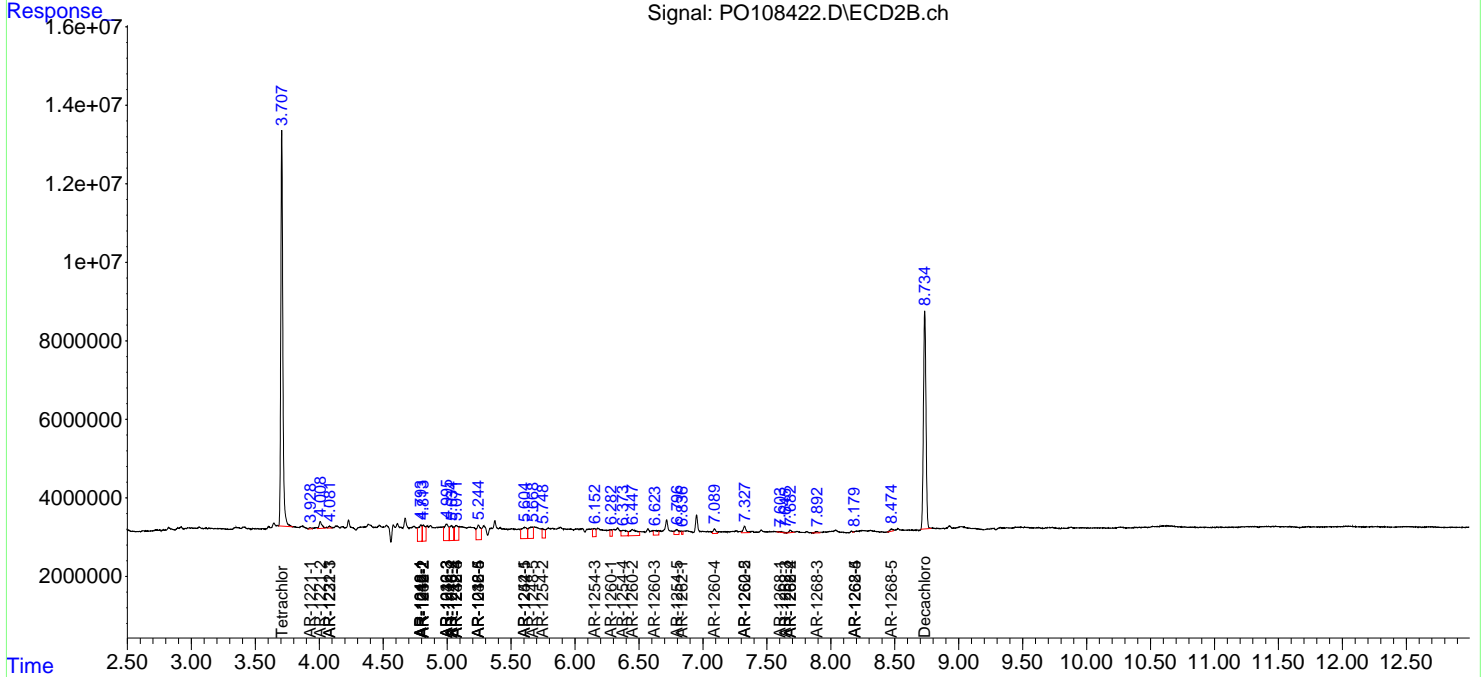
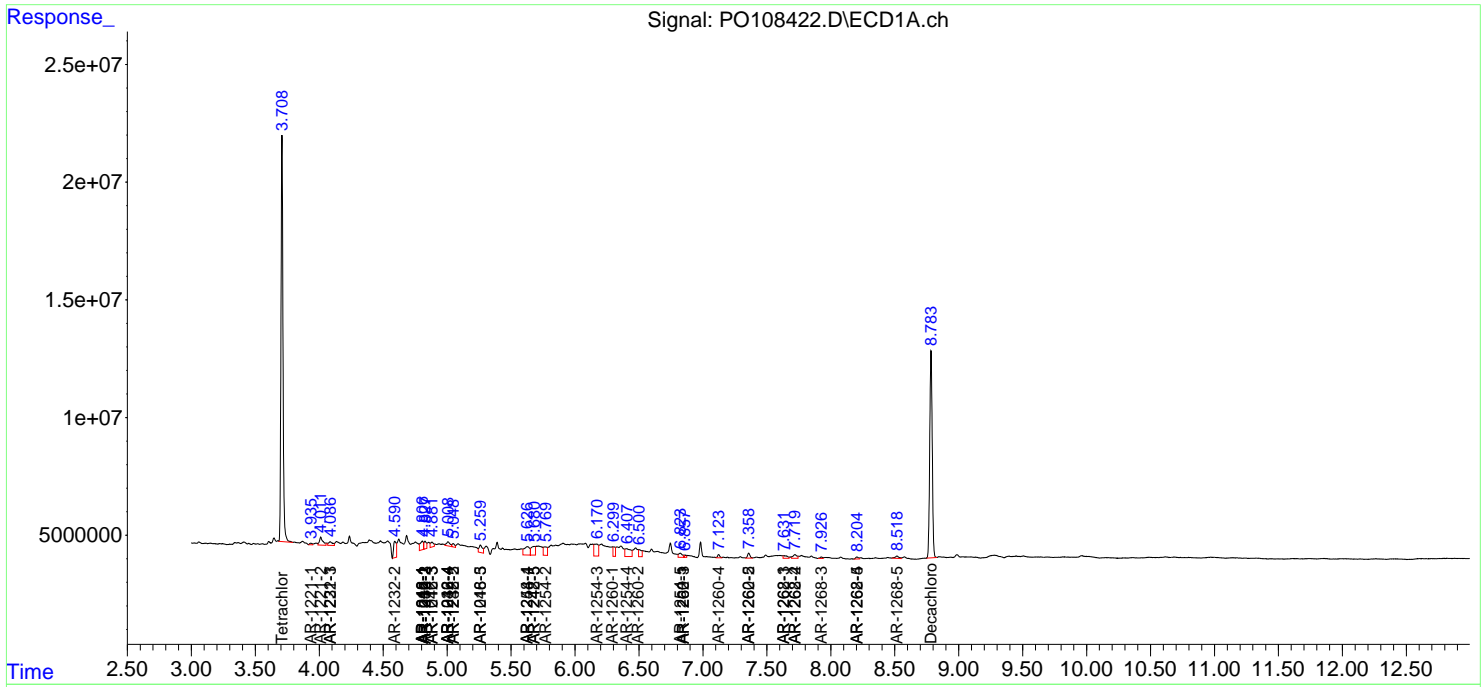
(f)=RT Delta > 1/2 Window (#)=Amounts differ by > 25% (m)=manual int.

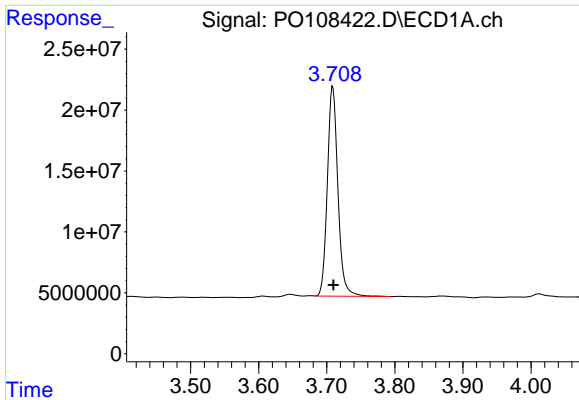
Data Path : Z:\pestpcbsrv\HPCHEM1\ECD_O\Data\PO120924\
 Data File : PO108422.D
 Signal(s) : Signal #1: ECD1A.ch Signal #2: ECD2B.ch
 Acq On : 09 Dec 2024 21:24
 Operator : YP/AJ
 Sample : P5162-02
 Misc :
 ALS Vial : 23 Sample Multiplier: 1

Instrument :
 ECD_O
 ClientSampleId :

Integration File signal 1: autoint1.e
 Integration File signal 2: autoint2.e
 Quant Time: Dec 10 01:44:25 2024
 Quant Method : Z:\pestpcbsrv\HPCHEM1\ECD_O\methods\PO120624.M
 Quant Title : GC EXTRACTABLES
 QLast Update : Sat Dec 07 05:58:15 2024
 Response via : Initial Calibration
 Integrator: ChemStation

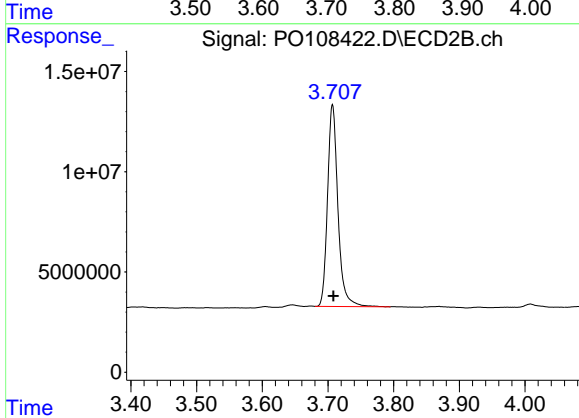
Volume Inj. : 2 µl
 Signal #1 Phase : ZB-MR1 Signal #2 Phase: ZB-MR2
 Signal #1 Info : 30Mx0.32mmx 0.50µ Signal #2 Info : 30M x 0.32mm x 0.25µm



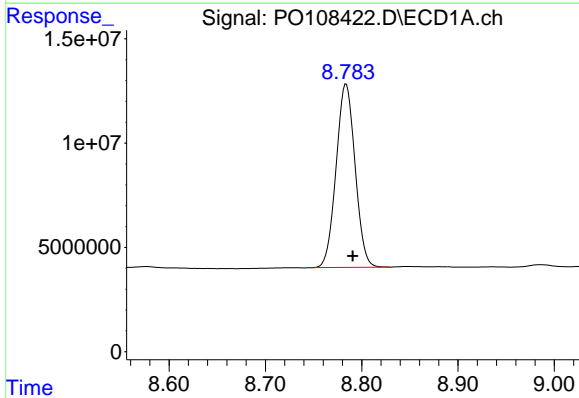


#1 Tetrachloro-m-xylene
 R.T.: 3.709 min
 Delta R.T.: -0.001 min
 Response: 185454406
 Conc: 21.32 ng/ml

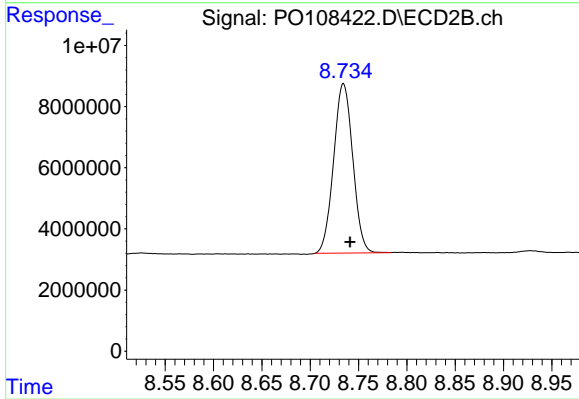
Instrument :
 ECD_O
 ClientSampleId :



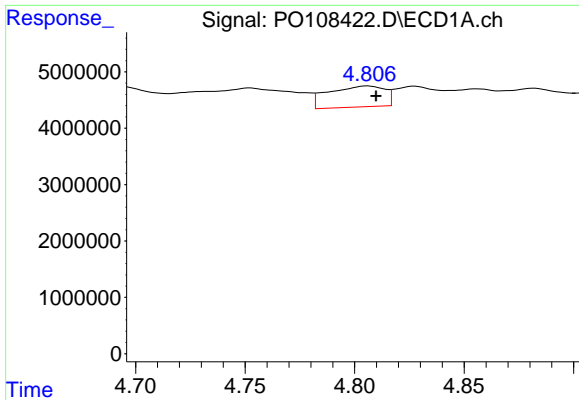
#1 Tetrachloro-m-xylene
 R.T.: 3.707 min
 Delta R.T.: -0.001 min
 Response: 110787760
 Conc: 21.85 ng/ml



#2 Decachlorobiphenyl
 R.T.: 8.784 min
 Delta R.T.: -0.007 min
 Response: 120201777
 Conc: 16.46 ng/ml



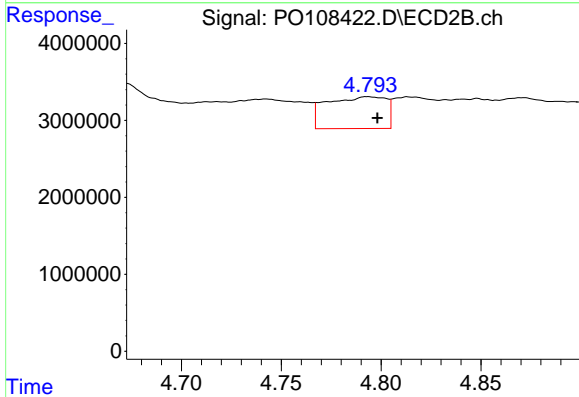
#2 Decachlorobiphenyl
 R.T.: 8.734 min
 Delta R.T.: -0.007 min
 Response: 76576447
 Conc: 19.76 ng/ml



#3 AR-1016-1

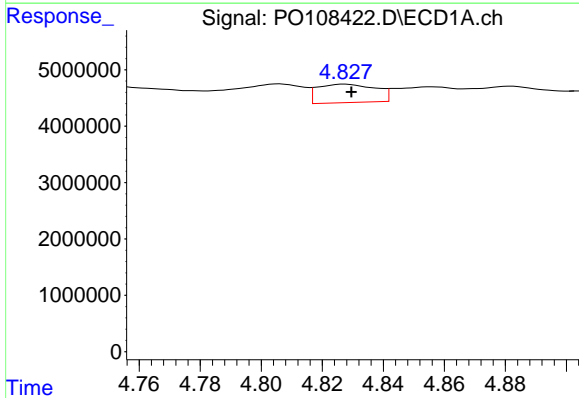
R.T.: 4.806 min
 Delta R.T.: -0.004 min
 Response: 6635267
 Conc: 21.51 ng/ml

Instrument :
 ECD_O
 ClientSampleId :



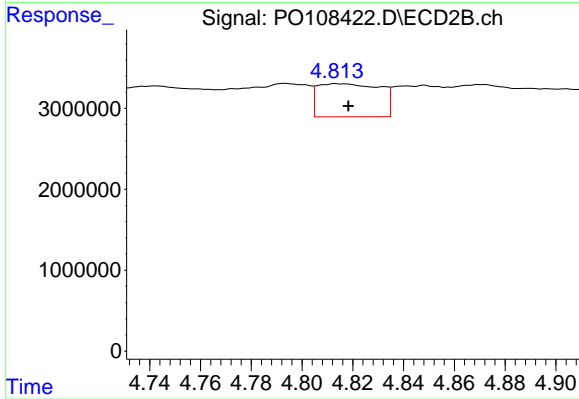
#3 AR-1016-1

R.T.: 4.793 min
 Delta R.T.: -0.005 min
 Response: 8549409
 Conc: 53.28 ng/ml



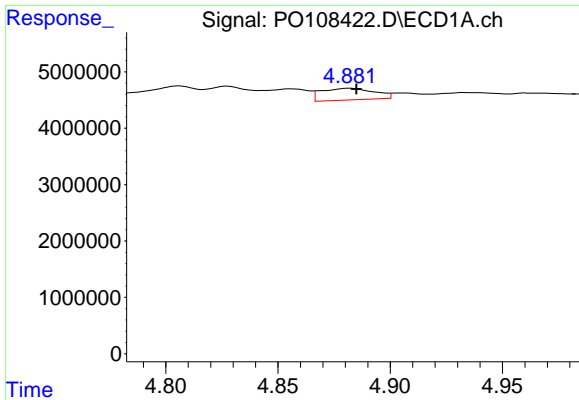
#4 AR-1016-2

R.T.: 4.828 min
 Delta R.T.: -0.002 min
 Response: 4329942
 Conc: 10.37 ng/ml



#4 AR-1016-2

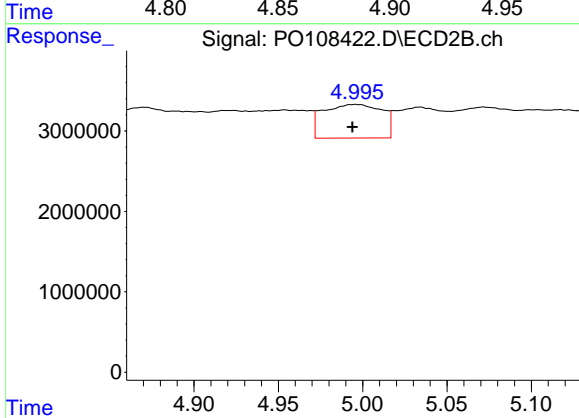
R.T.: 4.814 min
 Delta R.T.: -0.005 min
 Response: 6938611
 Conc: 31.24 ng/ml



#5 AR-1016-3

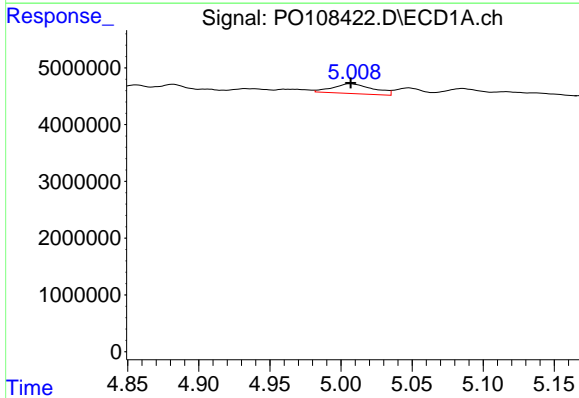
R.T.: 4.882 min
 Delta R.T.: -0.003 min
 Response: 3373517
 Conc: 11.53 ng/ml

Instrument :
 ECD_O
 ClientSampleId :



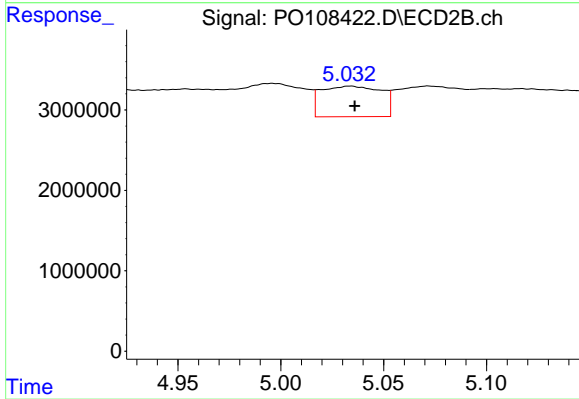
#5 AR-1016-3

R.T.: 4.996 min
 Delta R.T.: 0.002 min
 Response: 10134107
 Conc: 80.54 ng/ml



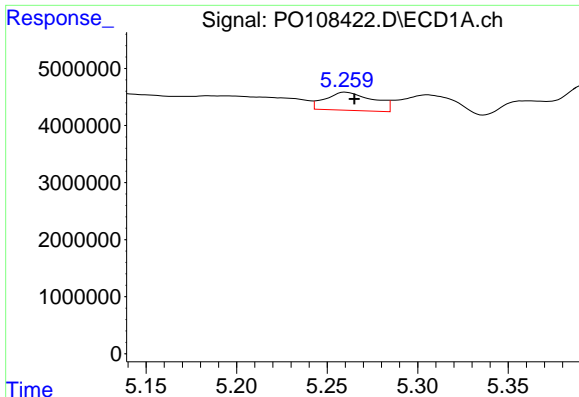
#6 AR-1016-4

R.T.: 5.007 min
 Delta R.T.: 0.000 min
 Response: 3419280
 Conc: 14.79 ng/ml



#6 AR-1016-4

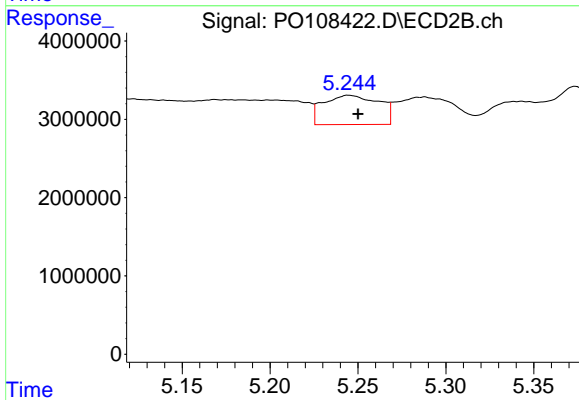
R.T.: 5.034 min
 Delta R.T.: -0.002 min
 Response: 7733924
 Conc: 73.79 ng/ml



#7 AR-1016-5

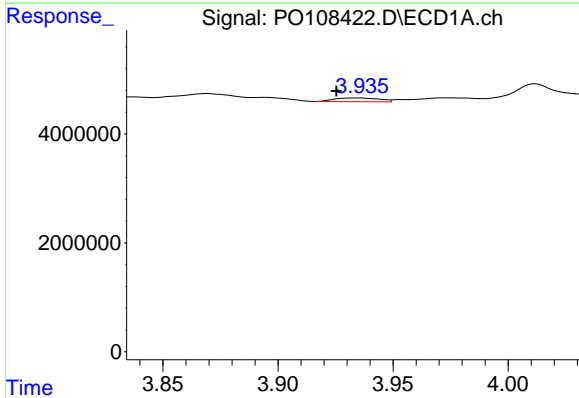
R.T.: 5.260 min
 Delta R.T.: -0.005 min
 Response: 5832704
 Conc: 23.18 ng/ml

Instrument :
 ECD_O
 ClientSampleId :



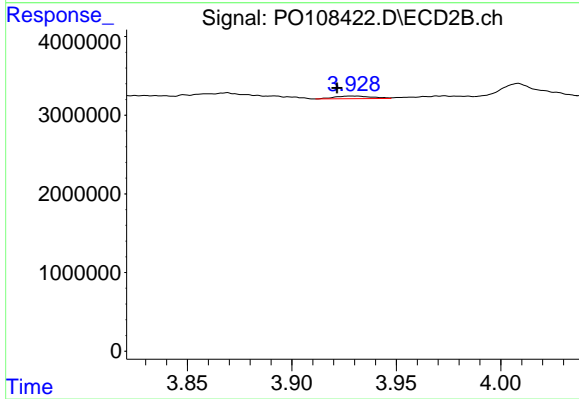
#7 AR-1016-5

R.T.: 5.245 min
 Delta R.T.: -0.005 min
 Response: 8207358
 Conc: 60.70 ng/ml



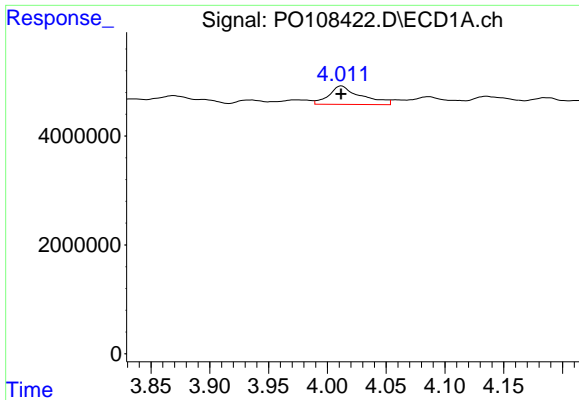
#8 AR-1221-1

R.T.: 3.936 min
 Delta R.T.: 0.010 min
 Response: 904504
 Conc: 7.99 ng/ml



#8 AR-1221-1

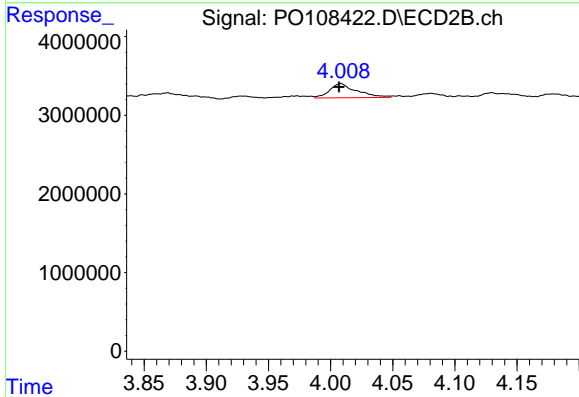
R.T.: 3.929 min
 Delta R.T.: 0.008 min
 Response: 429129
 Conc: 6.91 ng/ml



#9 AR-1221-2

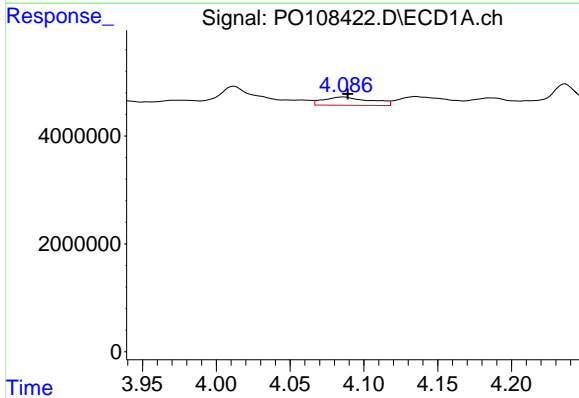
R.T.: 4.012 min
 Delta R.T.: 0.000 min
 Response: 6430891
 Conc: 74.16 ng/ml

Instrument :
 ECD_O
 ClientSampleId :



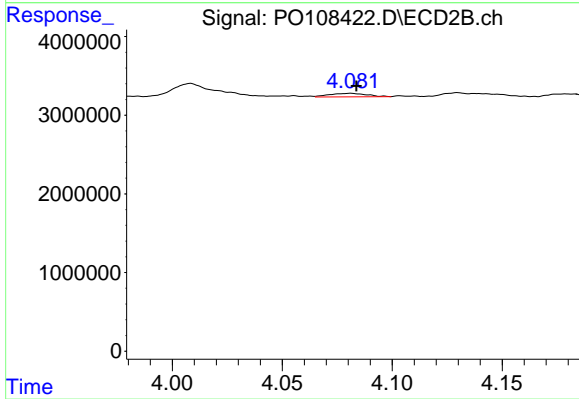
#9 AR-1221-2

R.T.: 4.008 min
 Delta R.T.: 0.001 min
 Response: 2721279
 Conc: 57.36 ng/ml



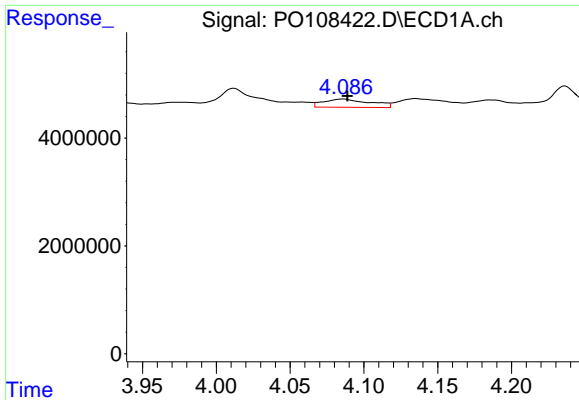
#10 AR-1221-3

R.T.: 4.086 min
 Delta R.T.: -0.003 min
 Response: 3365072
 Conc: 13.24 ng/ml



#10 AR-1221-3

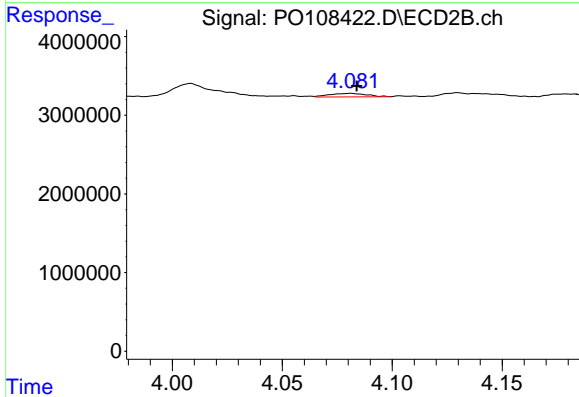
R.T.: 4.081 min
 Delta R.T.: -0.002 min
 Response: 528489
 Conc: 3.76 ng/ml



#11 AR-1232-1

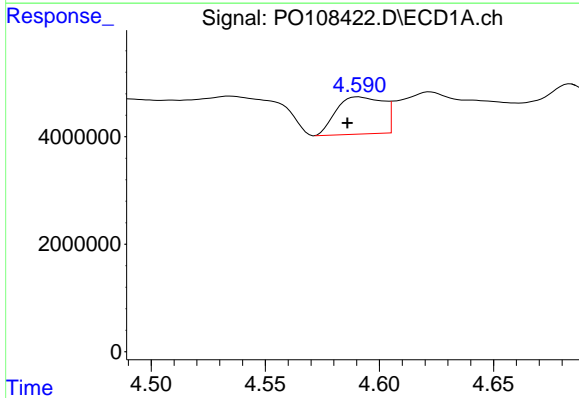
R.T.: 4.086 min
 Delta R.T.: -0.003 min
 Response: 3365072
 Conc: 16.43 ng/ml

Instrument :
 ECD_O
 ClientSampleId :



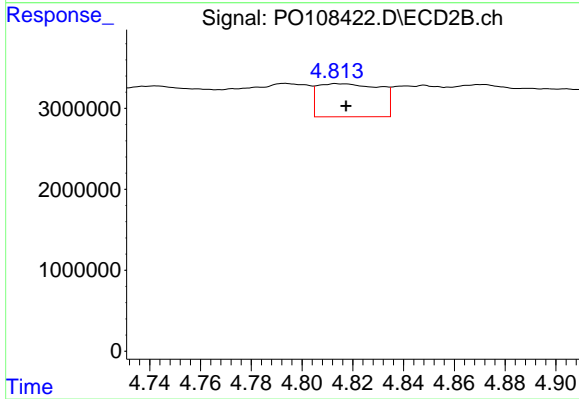
#11 AR-1232-1

R.T.: 4.081 min
 Delta R.T.: -0.003 min
 Response: 528489
 Conc: 4.72 ng/ml



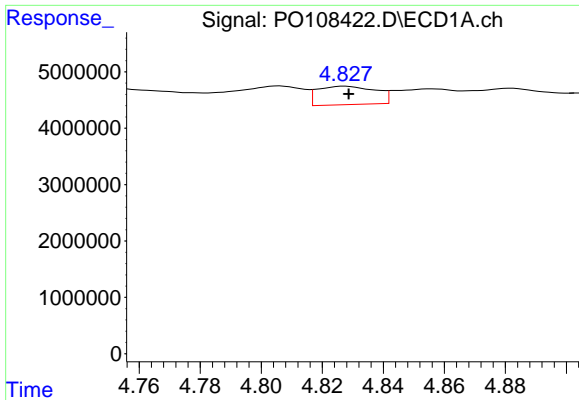
#12 AR-1232-2

R.T.: 4.591 min
 Delta R.T.: 0.005 min
 Response: 9931445
 Conc: 86.85 ng/ml



#12 AR-1232-2

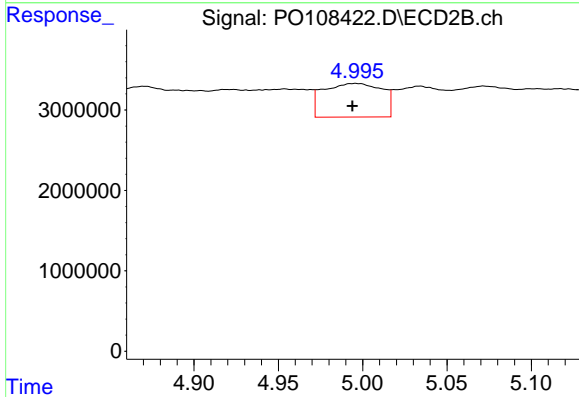
R.T.: 4.814 min
 Delta R.T.: -0.004 min
 Response: 6938611
 Conc: 65.61 ng/ml



#13 AR-1232-3

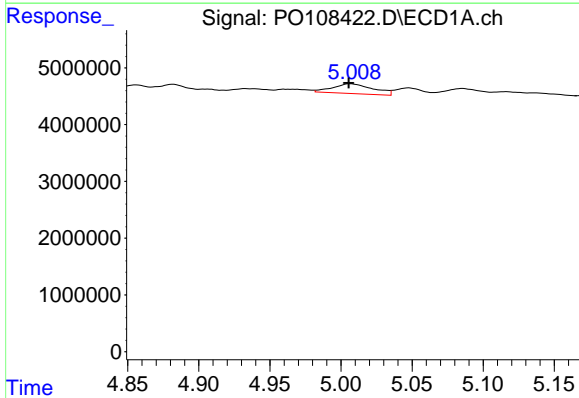
R.T.: 4.828 min
 Delta R.T.: -0.001 min
 Response: 4329942
 Conc: 21.93 ng/ml

Instrument :
 ECD_O
 ClientSampleId :



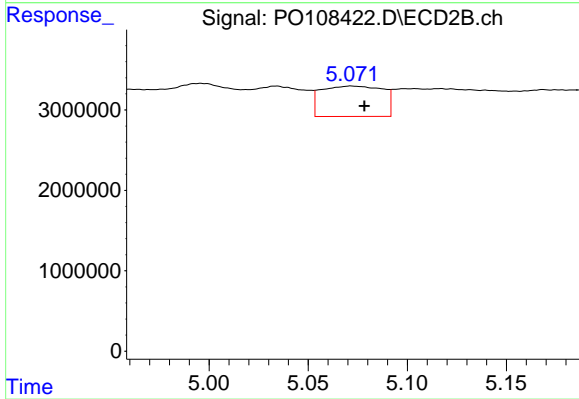
#13 AR-1232-3

R.T.: 4.996 min
 Delta R.T.: 0.002 min
 Response: 10134107
 Conc: 167.93 ng/ml



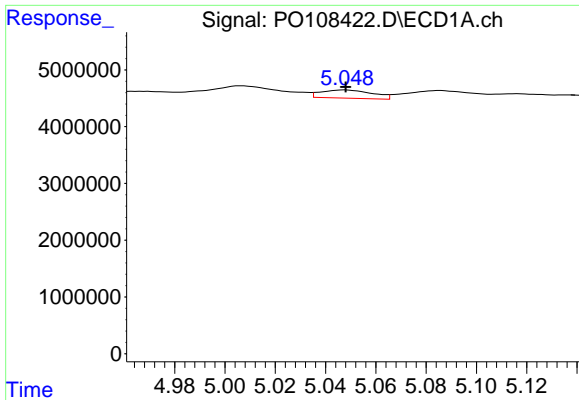
#14 AR-1232-4

R.T.: 5.007 min
 Delta R.T.: 0.001 min
 Response: 3419280
 Conc: 31.55 ng/ml



#14 AR-1232-4

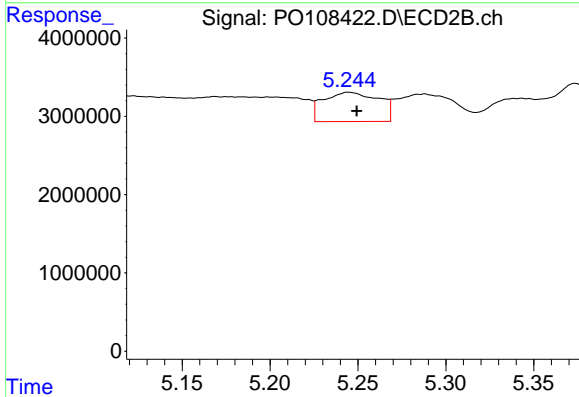
R.T.: 5.072 min
 Delta R.T.: -0.007 min
 Response: 8185266
 Conc: 147.33 ng/ml



#15 AR-1232-5

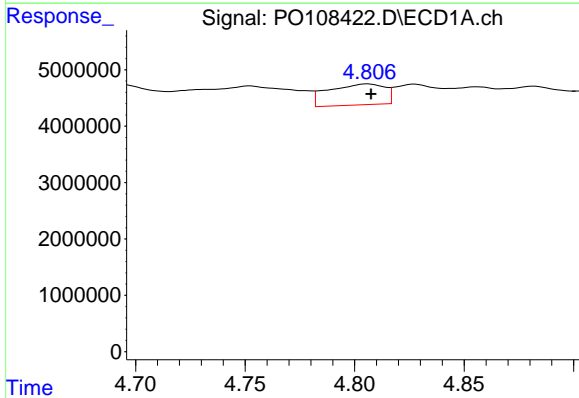
R.T.: 5.048 min
 Delta R.T.: 0.000 min
 Response: 2042918
 Conc: 26.08 ng/ml

Instrument :
 ECD_O
 ClientSampleId :



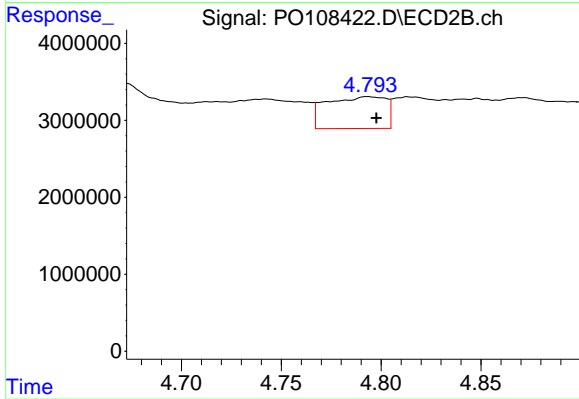
#15 AR-1232-5

R.T.: 5.245 min
 Delta R.T.: -0.004 min
 Response: 8207358
 Conc: 142.55 ng/ml



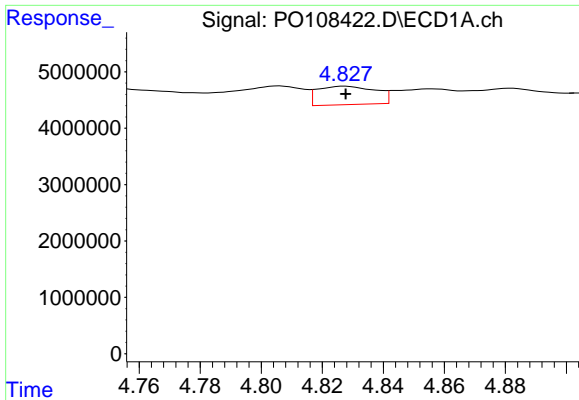
#16 AR-1242-1

R.T.: 4.806 min
 Delta R.T.: -0.002 min
 Response: 6635267
 Conc: 25.79 ng/ml



#16 AR-1242-1

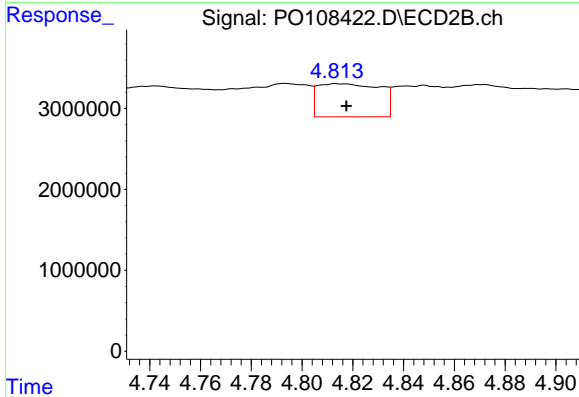
R.T.: 4.793 min
 Delta R.T.: -0.005 min
 Response: 8549409
 Conc: 62.97 ng/ml



#17 AR-1242-2

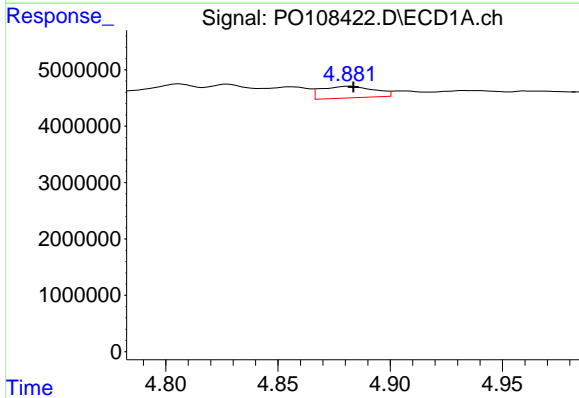
R.T.: 4.828 min
 Delta R.T.: 0.000 min
 Response: 4329942
 Conc: 12.54 ng/ml

Instrument :
 ECD_O
 ClientSampleId :



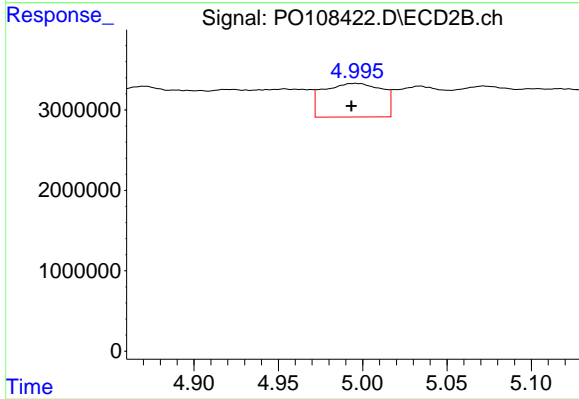
#17 AR-1242-2

R.T.: 4.814 min
 Delta R.T.: -0.004 min
 Response: 6938611
 Conc: 37.41 ng/ml



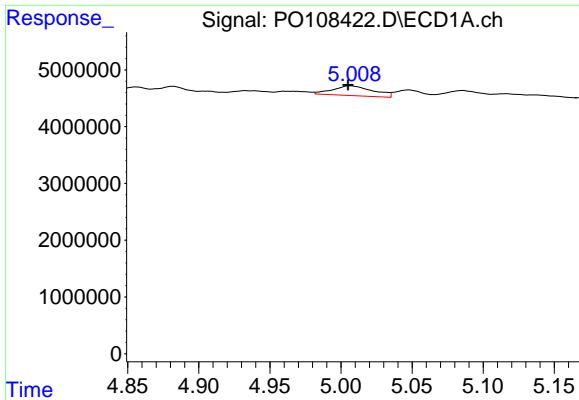
#18 AR-1242-3

R.T.: 4.882 min
 Delta R.T.: -0.002 min
 Response: 3373517
 Conc: 13.99 ng/ml



#18 AR-1242-3

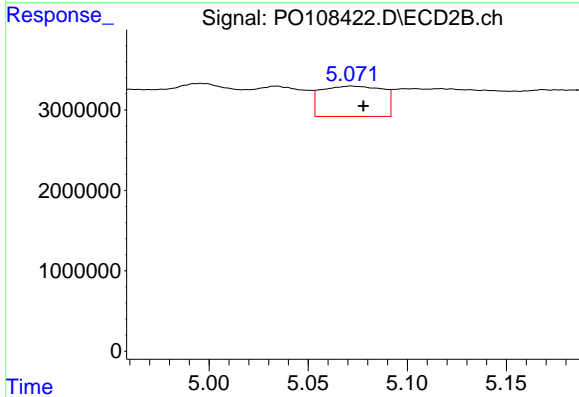
R.T.: 4.996 min
 Delta R.T.: 0.003 min
 Response: 10134107
 Conc: 96.17 ng/ml



#19 AR-1242-4

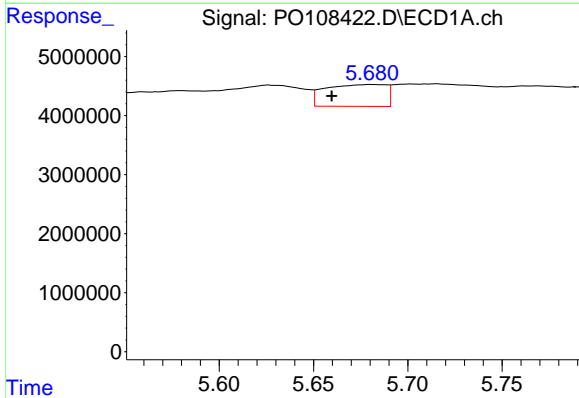
R.T.: 5.007 min
 Delta R.T.: 0.002 min
 Response: 3419280
 Conc: 17.93 ng/ml

Instrument :
 ECD_O
 ClientSampleId :



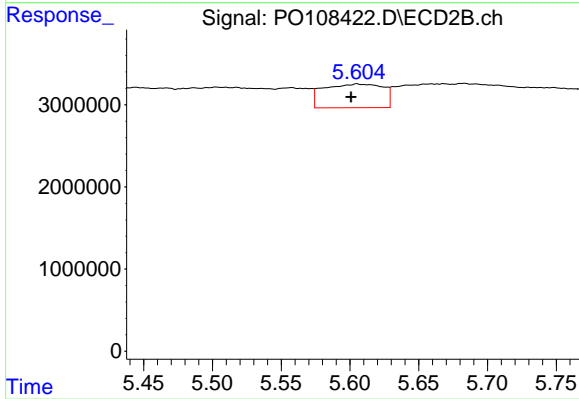
#19 AR-1242-4

R.T.: 5.072 min
 Delta R.T.: -0.006 min
 Response: 8185266
 Conc: 76.26 ng/ml



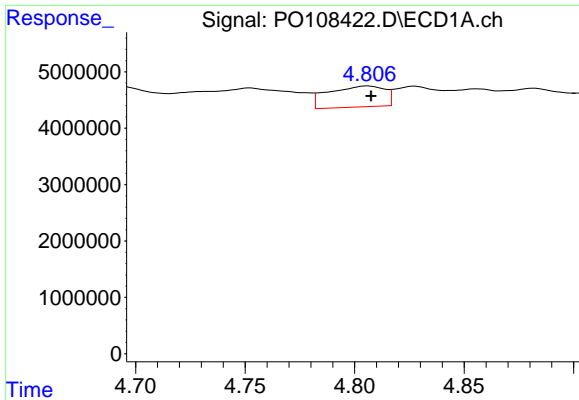
#20 AR-1242-5

R.T.: 5.680 min
 Delta R.T.: 0.021 min
 Response: 8293894
 Conc: 39.94 ng/ml



#20 AR-1242-5

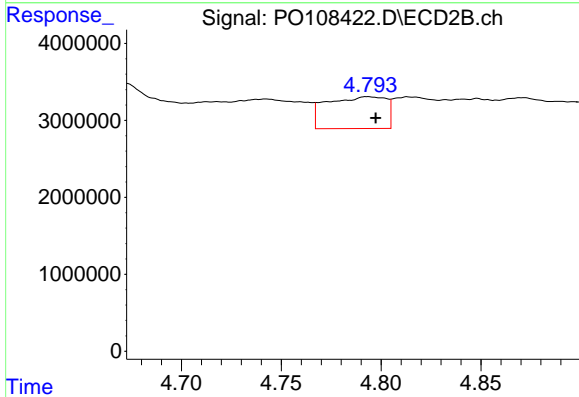
R.T.: 5.605 min
 Delta R.T.: 0.004 min
 Response: 8686663
 Conc: 68.72 ng/ml



#21 AR-1248-1

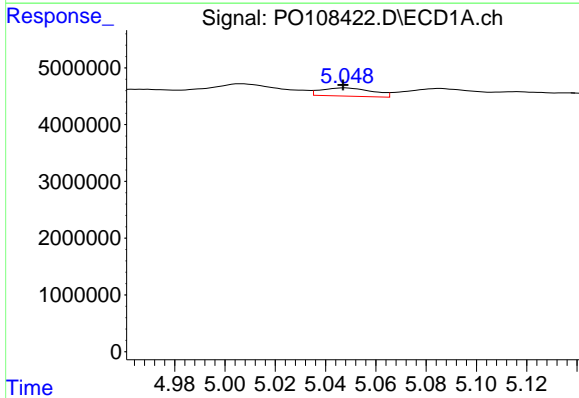
R.T.: 4.806 min
 Delta R.T.: -0.002 min
 Response: 6635267
 Conc: 33.13 ng/ml

Instrument :
 ECD_O
 ClientSampleId :



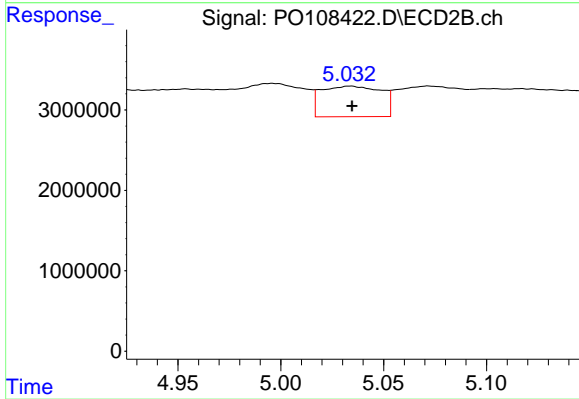
#21 AR-1248-1

R.T.: 4.793 min
 Delta R.T.: -0.004 min
 Response: 8549409
 Conc: 81.33 ng/ml



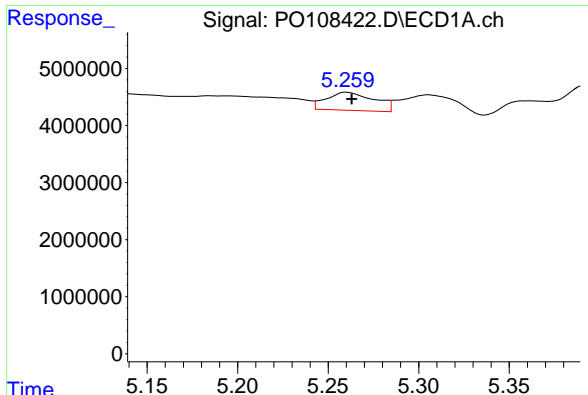
#22 AR-1248-2

R.T.: 5.048 min
 Delta R.T.: 0.000 min
 Response: 2042918
 Conc: 7.37 ng/ml



#22 AR-1248-2

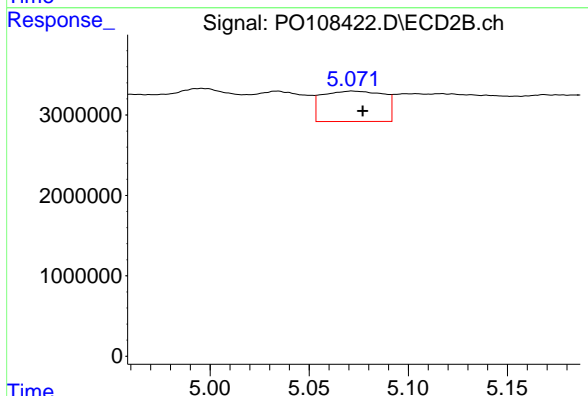
R.T.: 5.034 min
 Delta R.T.: -0.001 min
 Response: 7733924
 Conc: 51.79 ng/ml



#23 AR-1248-3

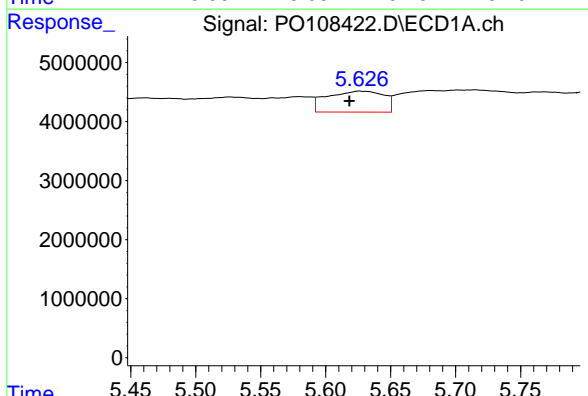
R.T.: 5.260 min
 Delta R.T.: -0.003 min
 Response: 5832704
 Conc: 17.10 ng/ml

Instrument :
 ECD_O
 ClientSampleId :



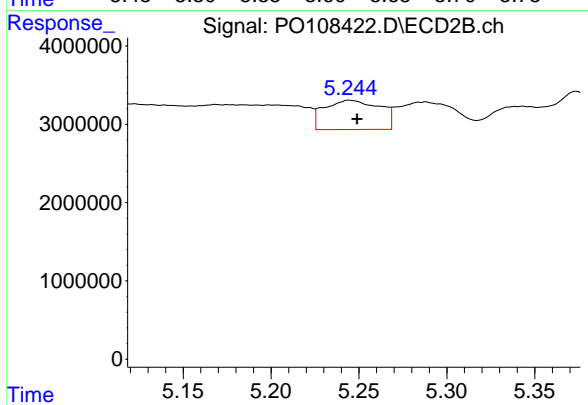
#23 AR-1248-3

R.T.: 5.072 min
 Delta R.T.: -0.005 min
 Response: 8185266
 Conc: 51.67 ng/ml



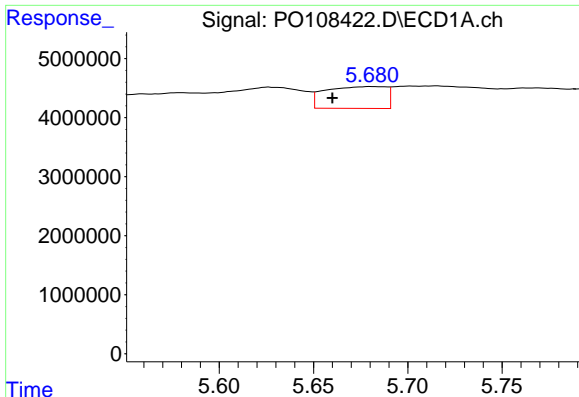
#24 AR-1248-4

R.T.: 5.626 min
 Delta R.T.: 0.008 min
 Response: 10762405
 Conc: 22.59 ng/ml



#24 AR-1248-4

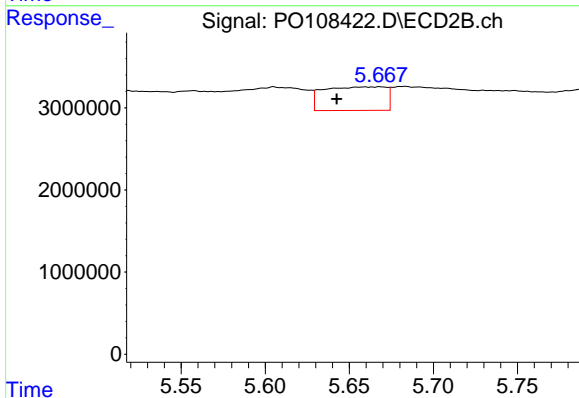
R.T.: 5.245 min
 Delta R.T.: -0.004 min
 Response: 8207358
 Conc: 44.96 ng/ml



#25 AR-1248-5

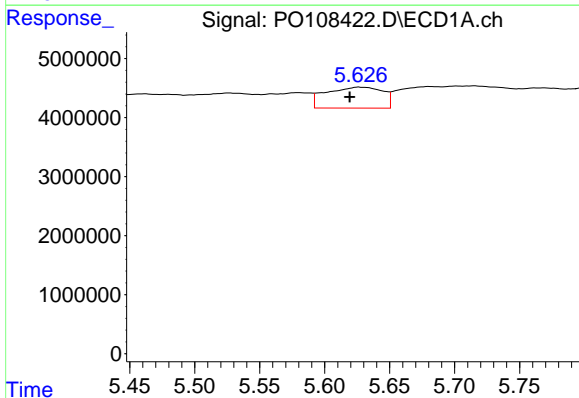
R.T.: 5.680 min
 Delta R.T.: 0.020 min
 Response: 8293894
 Conc: 24.49 ng/ml

Instrument :
 ECD_O
 ClientSampleId :



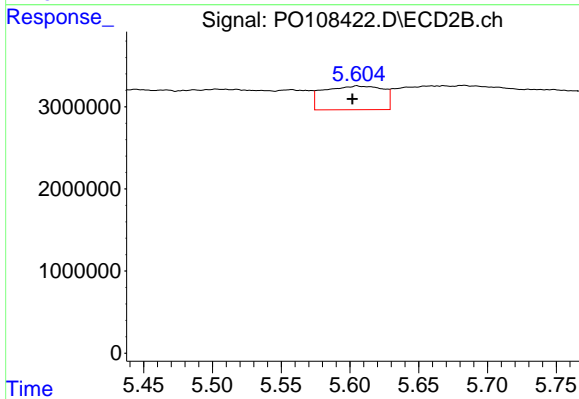
#25 AR-1248-5

R.T.: 5.668 min
 Delta R.T.: 0.026 min
 Response: 7395505
 Conc: 42.11 ng/ml



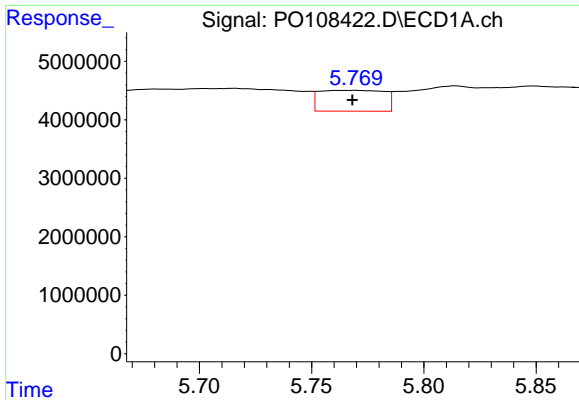
#26 AR-1254-1

R.T.: 5.626 min
 Delta R.T.: 0.007 min
 Response: 10762405
 Conc: 20.95 ng/ml



#26 AR-1254-1

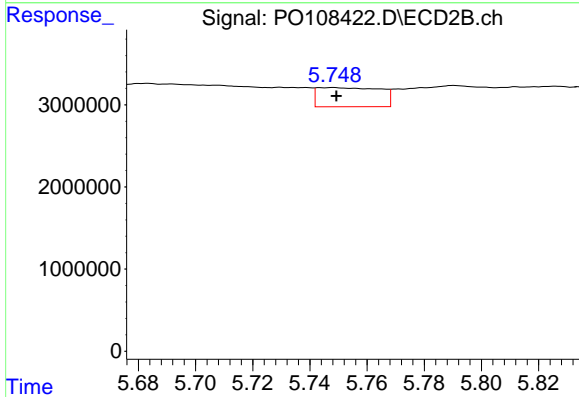
R.T.: 5.605 min
 Delta R.T.: 0.003 min
 Response: 8686663
 Conc: 32.07 ng/ml



#27 AR-1254-2

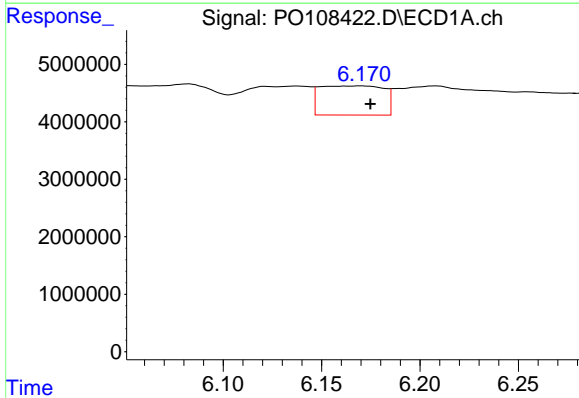
R.T.: 5.769 min
 Delta R.T.: 0.001 min
 Response: 7111116
 Conc: 15.61 ng/ml

Instrument :
 ECD_O
 ClientSampleId :



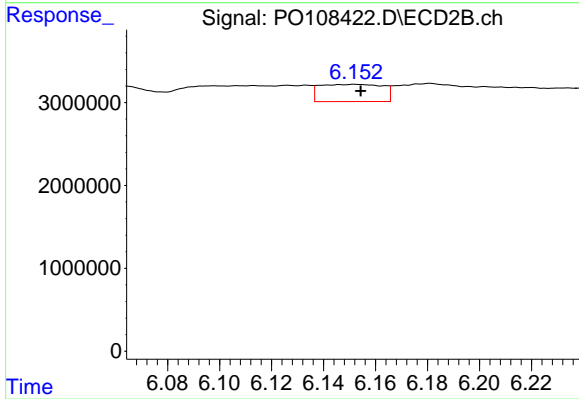
#27 AR-1254-2

R.T.: 5.748 min
 Delta R.T.: -0.001 min
 Response: 3539951
 Conc: 14.75 ng/ml



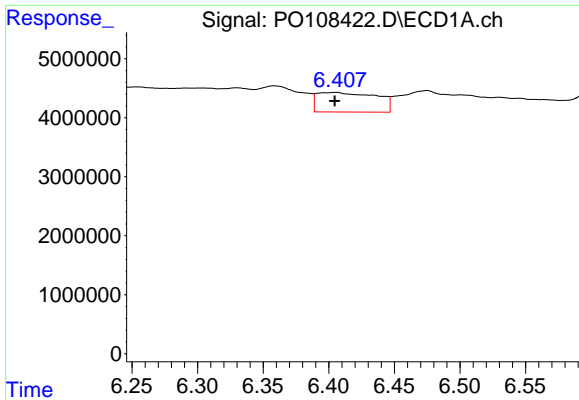
#28 AR-1254-3

R.T.: 6.170 min
 Delta R.T.: -0.005 min
 Response: 11473417
 Conc: 15.93 ng/ml



#28 AR-1254-3

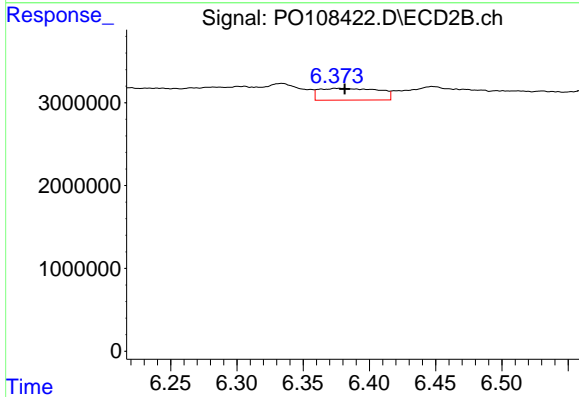
R.T.: 6.152 min
 Delta R.T.: -0.002 min
 Response: 3488382
 Conc: 9.29 ng/ml



#29 AR-1254-4

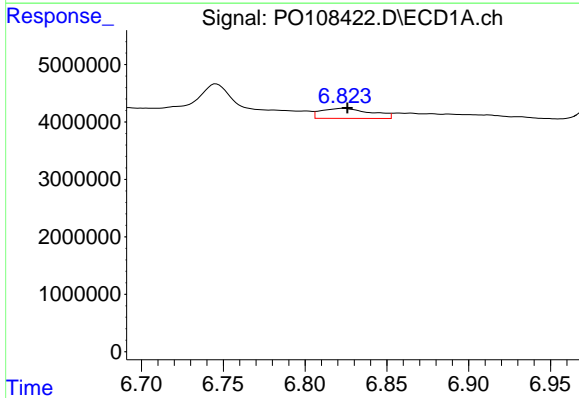
R.T.: 6.406 min
 Delta R.T.: 0.001 min
 Response: 10454463
 Conc: 23.82 ng/ml

Instrument :
 ECD_O
 ClientSampleId :



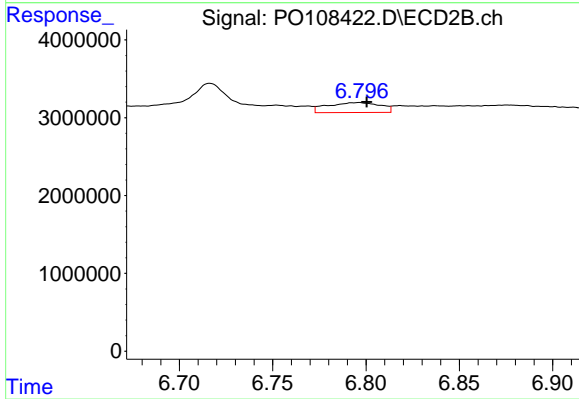
#29 AR-1254-4

R.T.: 6.375 min
 Delta R.T.: -0.007 min
 Response: 4458240
 Conc: 20.48 ng/ml



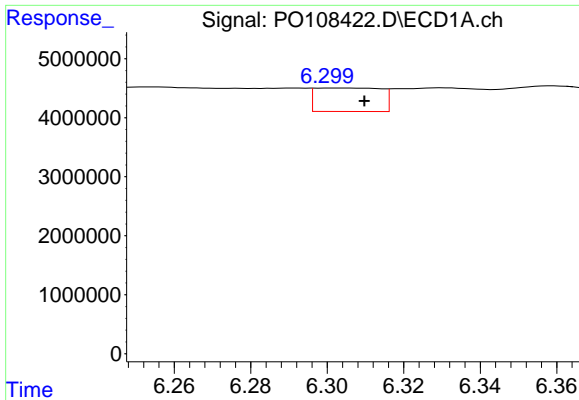
#30 AR-1254-5

R.T.: 6.823 min
 Delta R.T.: -0.003 min
 Response: 3673183
 Conc: 5.78 ng/ml



#30 AR-1254-5

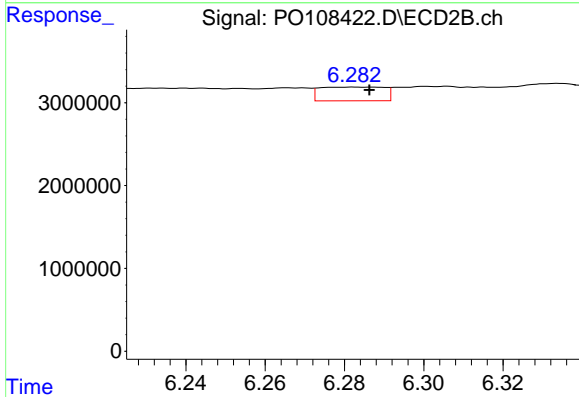
R.T.: 6.796 min
 Delta R.T.: -0.005 min
 Response: 2505964
 Conc: 7.76 ng/ml



#31 AR-1260-1

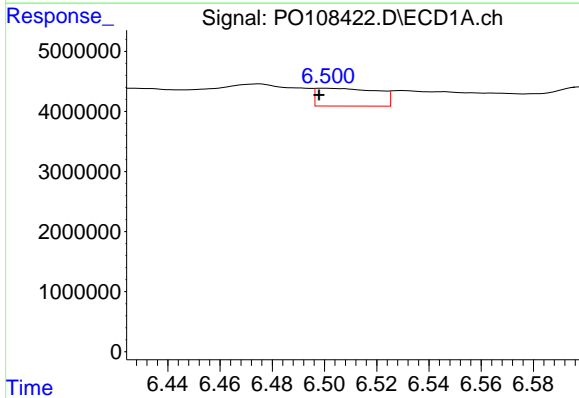
R.T.: 6.300 min
 Delta R.T.: -0.010 min
 Response: 4733430
 Conc: 10.35 ng/ml

Instrument :
 ECD_O
 ClientSampleId :



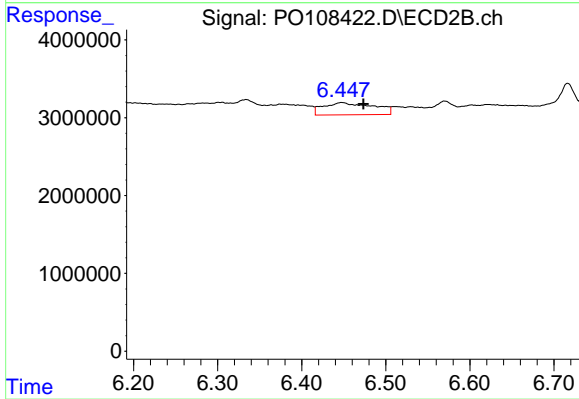
#31 AR-1260-1

R.T.: 6.283 min
 Delta R.T.: -0.004 min
 Response: 1869215
 Conc: 7.99 ng/ml



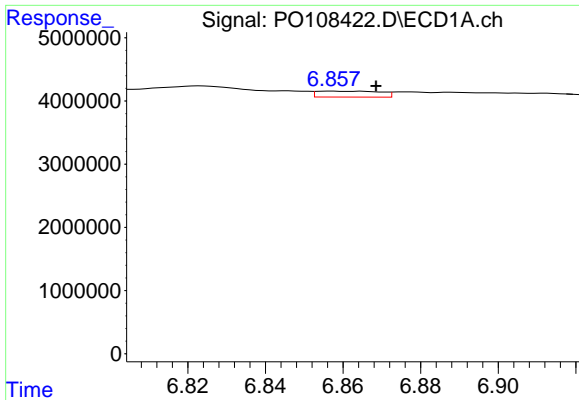
#32 AR-1260-2

R.T.: 6.501 min
 Delta R.T.: 0.003 min
 Response: 4827215
 Conc: 8.69 ng/ml



#32 AR-1260-2

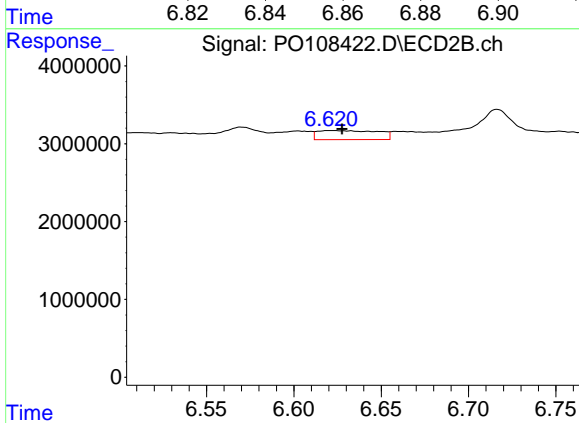
R.T.: 6.448 min
 Delta R.T.: -0.026 min
 Response: 6495182
 Conc: 23.15 ng/ml



#33 AR-1260-3

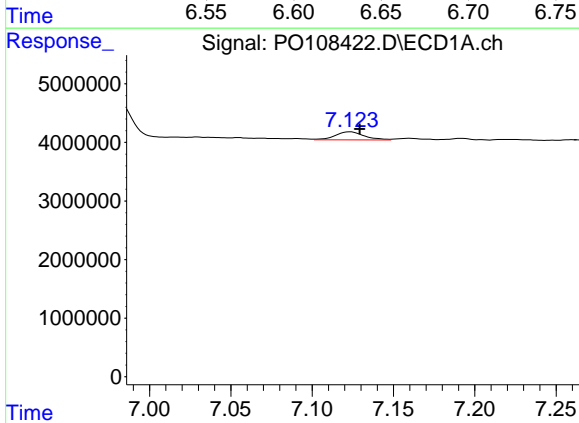
R.T.: 6.857 min
 Delta R.T.: -0.011 min
 Response: 1077068
 Conc: 2.32 ng/ml

Instrument :
 ECD_O
 ClientSampleId :



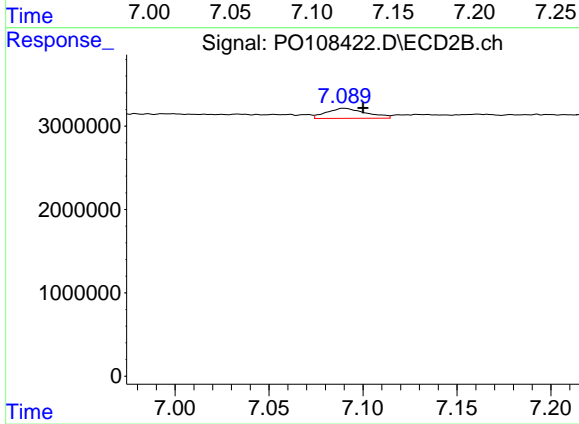
#33 AR-1260-3

R.T.: 6.621 min
 Delta R.T.: -0.006 min
 Response: 2829419
 Conc: 10.74 ng/ml



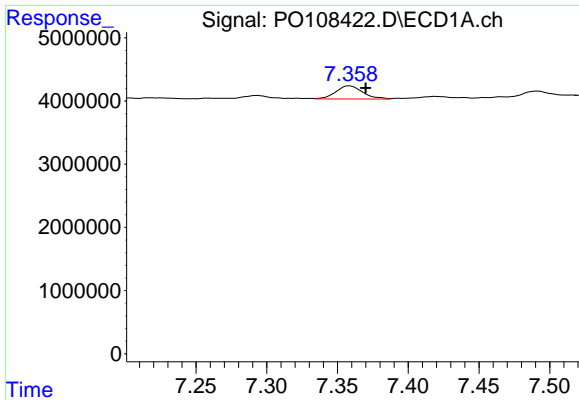
#34 AR-1260-4

R.T.: 7.123 min
 Delta R.T.: -0.006 min
 Response: 1724561
 Conc: 4.05 ng/ml



#34 AR-1260-4

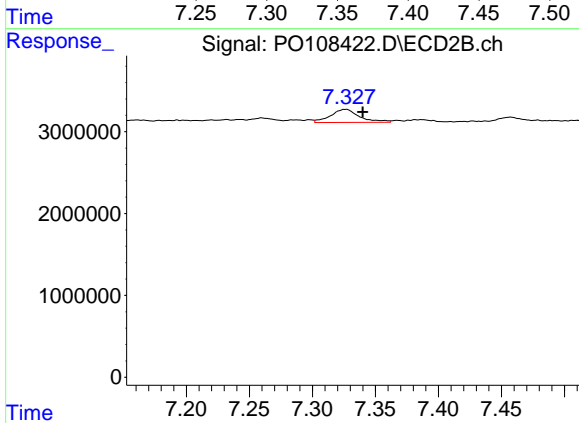
R.T.: 7.090 min
 Delta R.T.: -0.010 min
 Response: 1779325
 Conc: 8.36 ng/ml



#35 AR-1260-5

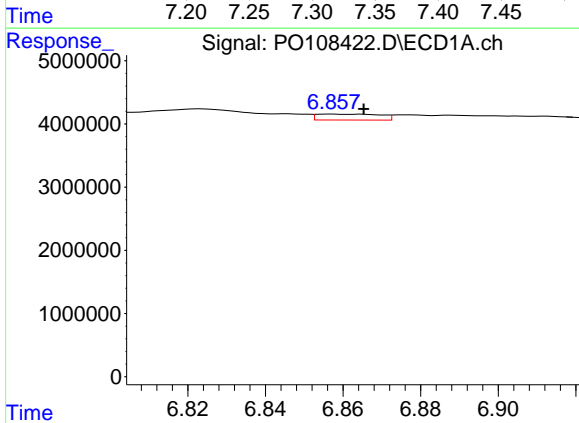
R.T.: 7.358 min
 Delta R.T.: -0.012 min
 Response: 2764749
 Conc: 2.84 ng/ml

Instrument :
 ECD_O
 ClientSampleId :



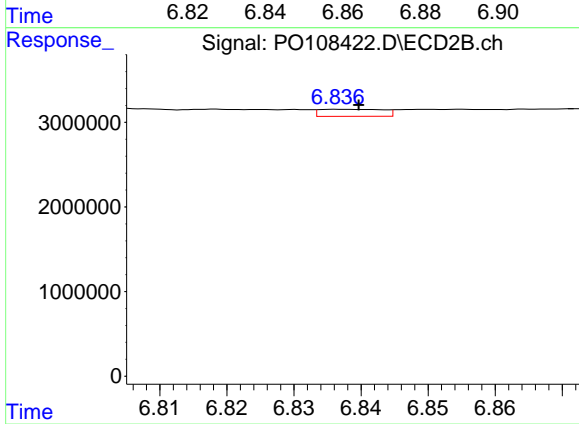
#35 AR-1260-5

R.T.: 7.326 min
 Delta R.T.: -0.014 min
 Response: 2553370
 Conc: 5.28 ng/ml



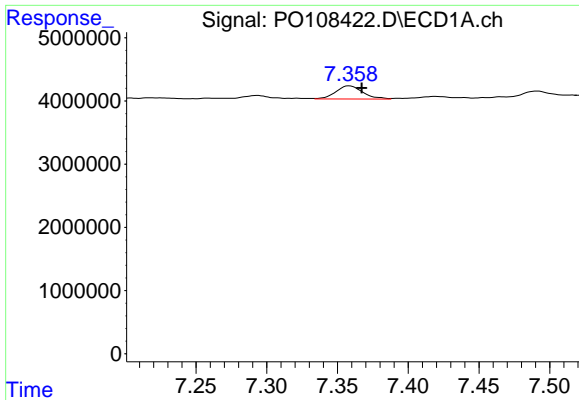
#36 AR-1262-1

R.T.: 6.857 min
 Delta R.T.: -0.008 min
 Response: 1077068
 Conc: 1.64 ng/ml



#36 AR-1262-1

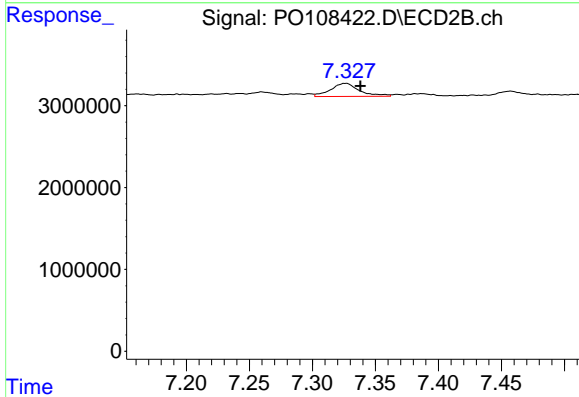
R.T.: 6.838 min
 Delta R.T.: -0.002 min
 Response: 551124
 Conc: 1.63 ng/ml



#37 AR-1262-2

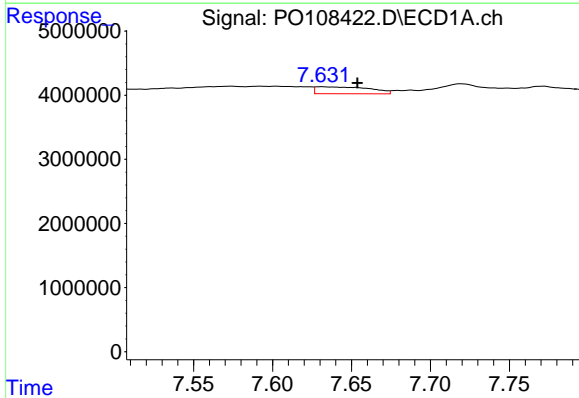
R.T.: 7.358 min
 Delta R.T.: -0.009 min
 Response: 2764749
 Conc: 2.49 ng/ml

Instrument :
 ECD_O
 ClientSampleId :



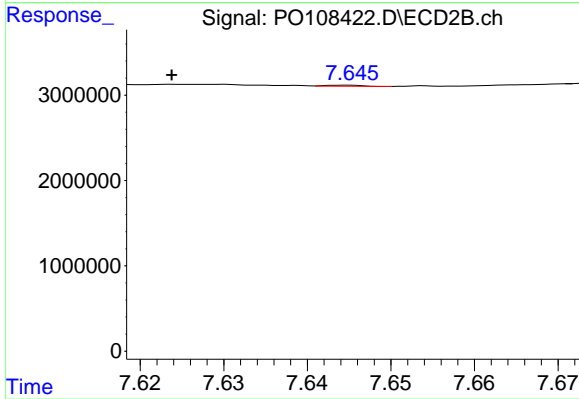
#37 AR-1262-2

R.T.: 7.326 min
 Delta R.T.: -0.012 min
 Response: 2553370
 Conc: 4.47 ng/ml



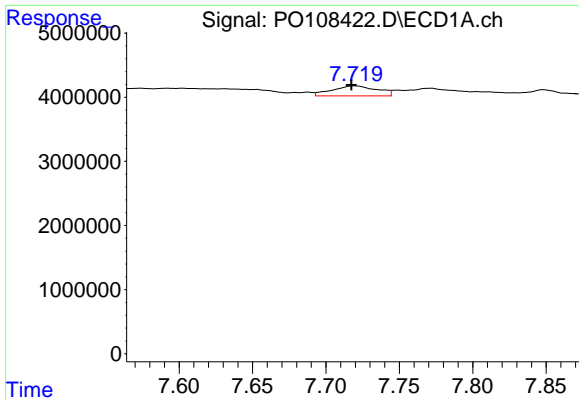
#38 AR-1262-3

R.T.: 7.631 min
 Delta R.T.: -0.023 min
 Response: 2553518
 Conc: 5.85 ng/ml



#38 AR-1262-3

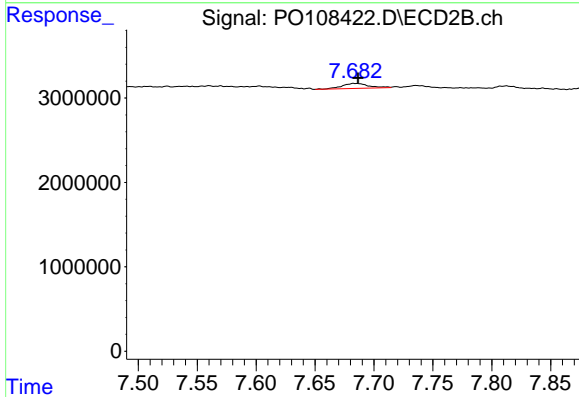
R.T.: 7.645 min
 Delta R.T.: 0.021 min
 Response: 33650
 Conc: 0.15 ng/ml



#39 AR-1262-4

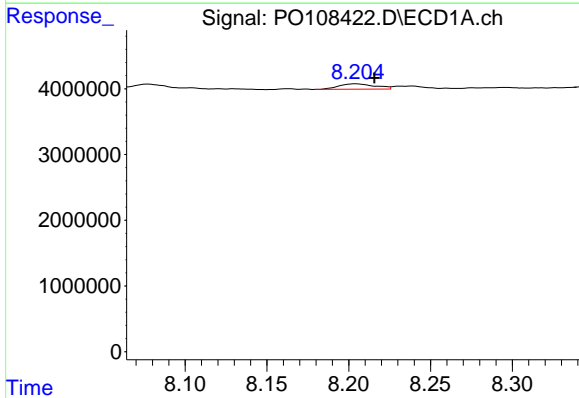
R.T.: 7.720 min
 Delta R.T.: 0.002 min
 Response: 3341752
 Conc: 4.14 ng/ml

Instrument :
 ECD_O
 ClientSampleId :



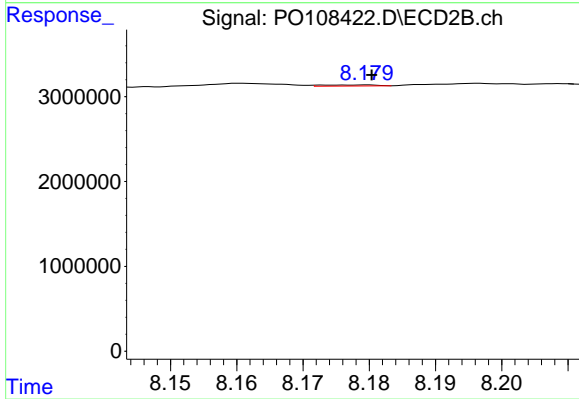
#39 AR-1262-4

R.T.: 7.683 min
 Delta R.T.: -0.003 min
 Response: 925247
 Conc: 2.26 ng/ml



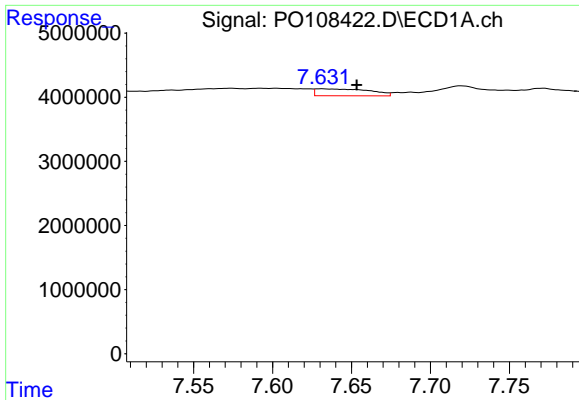
#40 AR-1262-5

R.T.: 8.204 min
 Delta R.T.: -0.011 min
 Response: 1263913
 Conc: 3.56 ng/ml



#40 AR-1262-5

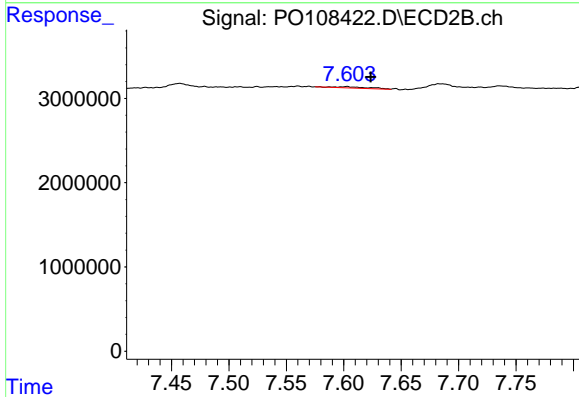
R.T.: 8.179 min
 Delta R.T.: -0.001 min
 Response: 68863
 Conc: 0.37 ng/ml



#41 AR-1268-1

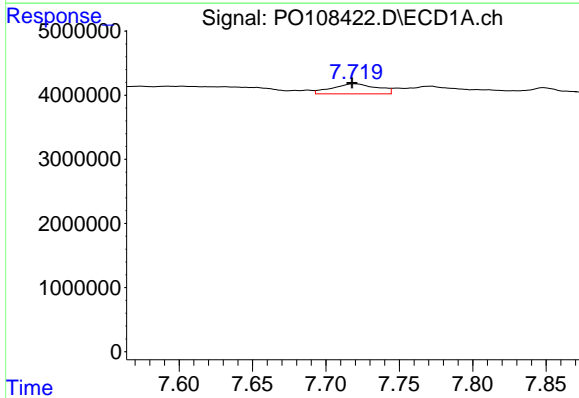
R.T.: 7.631 min
 Delta R.T.: -0.022 min
 Response: 2553518
 Conc: 2.05 ng/ml

Instrument :
 ECD_O
 ClientSampleId :



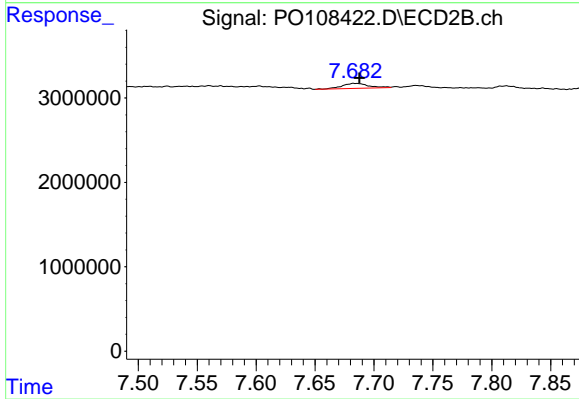
#41 AR-1268-1

R.T.: 7.603 min
 Delta R.T.: -0.021 min
 Response: 321656
 Conc: 0.50 ng/ml



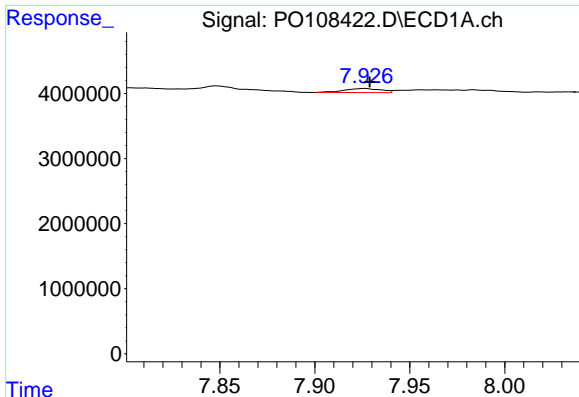
#42 AR-1268-2

R.T.: 7.720 min
 Delta R.T.: 0.002 min
 Response: 3341752
 Conc: 2.98 ng/ml



#42 AR-1268-2

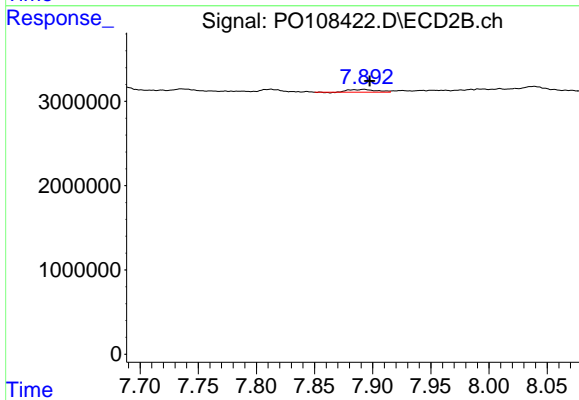
R.T.: 7.683 min
 Delta R.T.: -0.004 min
 Response: 925247
 Conc: 1.59 ng/ml



#43 AR-1268-3

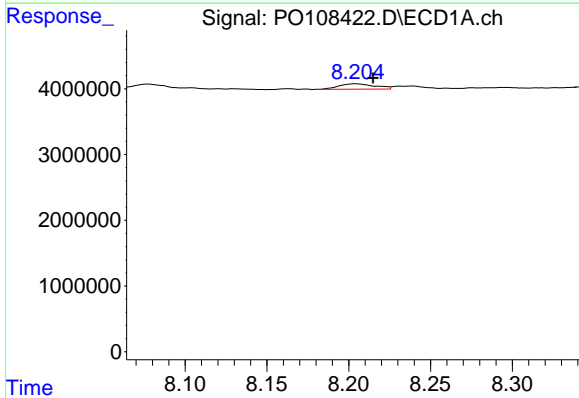
R.T.: 7.926 min
 Delta R.T.: -0.003 min
 Response: 830281
 Conc: 0.92 ng/ml

Instrument :
 ECD_O
 ClientSampleId :



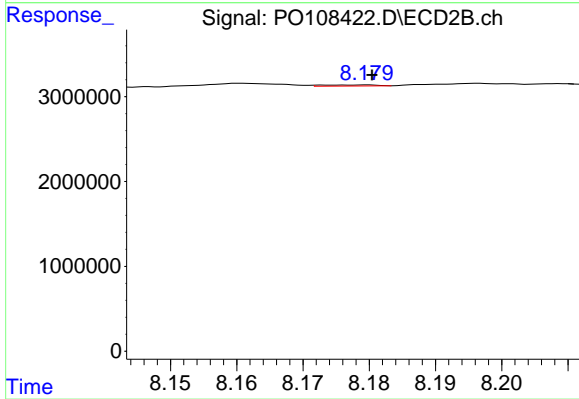
#43 AR-1268-3

R.T.: 7.892 min
 Delta R.T.: -0.005 min
 Response: 531543
 Conc: 1.07 ng/ml



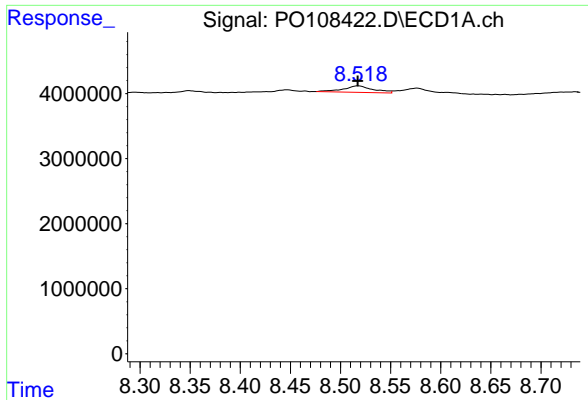
#44 AR-1268-4

R.T.: 8.204 min
 Delta R.T.: -0.011 min
 Response: 1263913
 Conc: 3.27 ng/ml



#44 AR-1268-4

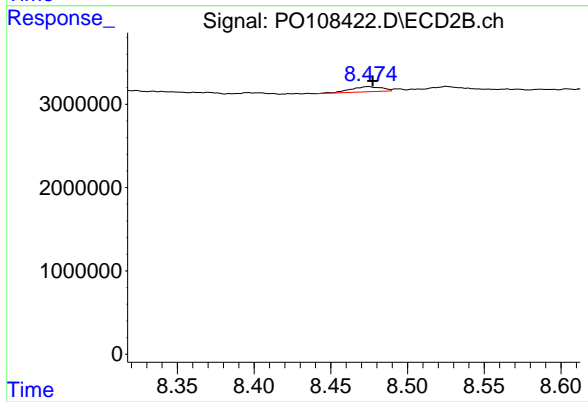
R.T.: 8.179 min
 Delta R.T.: -0.001 min
 Response: 68863
 Conc: 0.34 ng/ml



#45 AR-1268-5

R.T.: 8.518 min
 Delta R.T.: 0.000 min
 Response: 2059128
 Conc: 0.74 ng/ml

Instrument :
 ECD_O
 ClientSampleId :



#45 AR-1268-5

R.T.: 8.474 min
 Delta R.T.: -0.003 min
 Response: 865843
 Conc: 0.58 ng/ml