

Data Path : Z:\pestpcbsrv\HPCHEM1\ECD_0\Data\PO121018\
 Data File : P0052380.D
 Signal(s) : Signal #1: ECD1A.CH Signal #2: ECD2B.CH
 Acq On : 10 Dec 2018 15:18
 Operator : SM/SJ
 Sample : PB115475BL
 Misc :
 ALS Vial : 6 Sample Multiplier: 1

Instrument :
 ECD_0
 ClientSampleId :
 PB115475BL

Manual Integrations
 APPROVED

Sohil
 12/12/2018 11:35:34 AM

Integration File signal 1: autoint1.e
 Integration File signal 2: autoint2.e
 Quant Time: Dec 11 02:54:46 2018
 Quant Method : Z:\pestpcbsrv\HPCHEM1\ECD_0\methods\PO120318.M
 Quant Title : GC EXTRACTABLES
 QLast Update : Tue Dec 04 03:10:39 2018
 Response via : Initial Calibration
 Integrator: ChemStation 6890 Scale Mode: Small noise peaks clipped

Volume Inj. : 2 µl
 Signal #1 Phase : ZB-MR1 Signal #2 Phase: ZB-MR2
 Signal #1 Info : 30Mx0.32mmx 0.50µ Signal #2 Info : 30M x 0.32mm x 0.25µm

Compound	RT#1	RT#2	Resp#1	Resp#2	ng/ml	ng/ml
----------	------	------	--------	--------	-------	-------

 System Monitoring Compounds

1) SA Tetrachlo...	4.279	3.289	21032258	5090084	24.430	22.822
2) SA Decachlor...	9.853	7.983	9487929	4261059	18.959m	20.439

Target Compounds

(f)=RT Delta > 1/2 Window (#)=Amounts differ by > 25% (m)=manual int.

Data Path : Z:\pestpcbsrv\HPCHEM1\ECD_O\Data\PO121018\
 Data File : PO052380.D
 Signal(s) : Signal #1: ECD1A.CH Signal #2: ECD2B.CH
 Acq On : 10 Dec 2018 15:18
 Operator : SM/SJ
 Sample : PB115475BL
 Misc :
 ALS Vial : 6 Sample Multiplier: 1

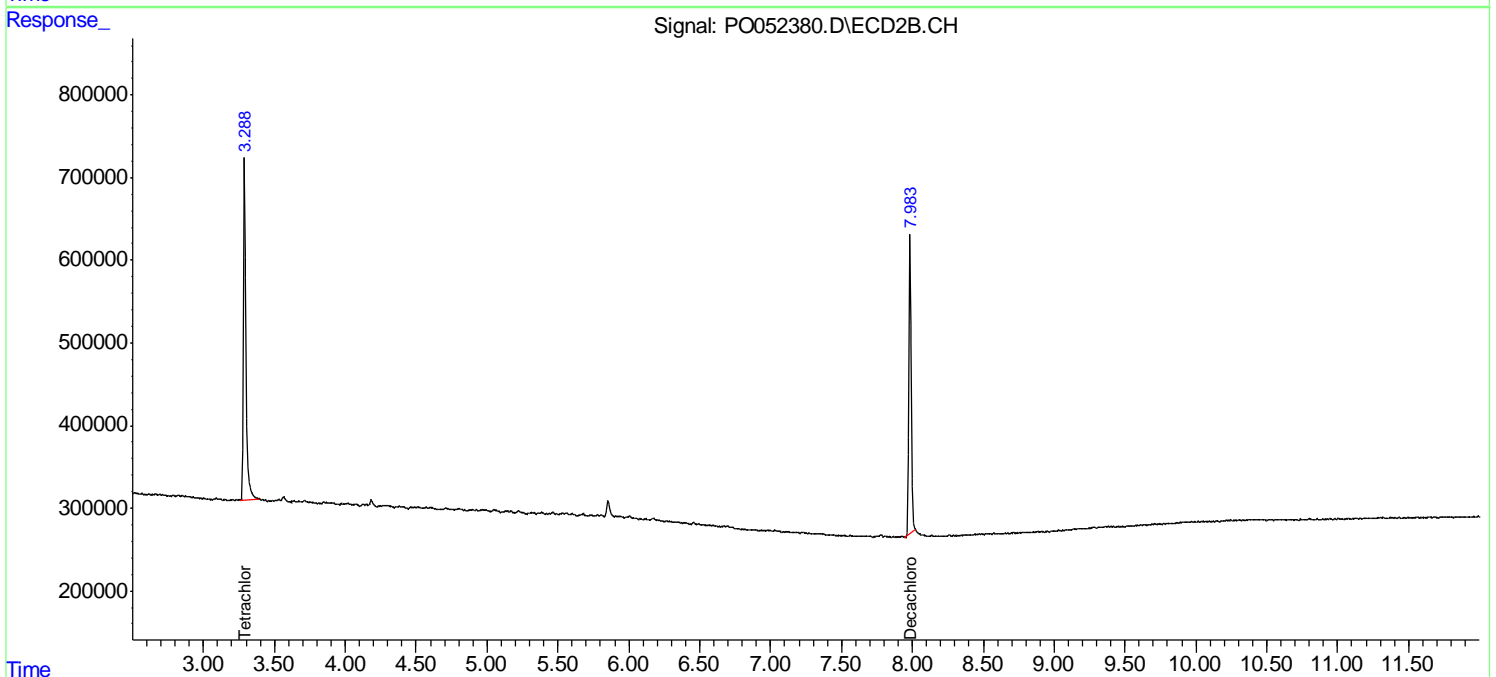
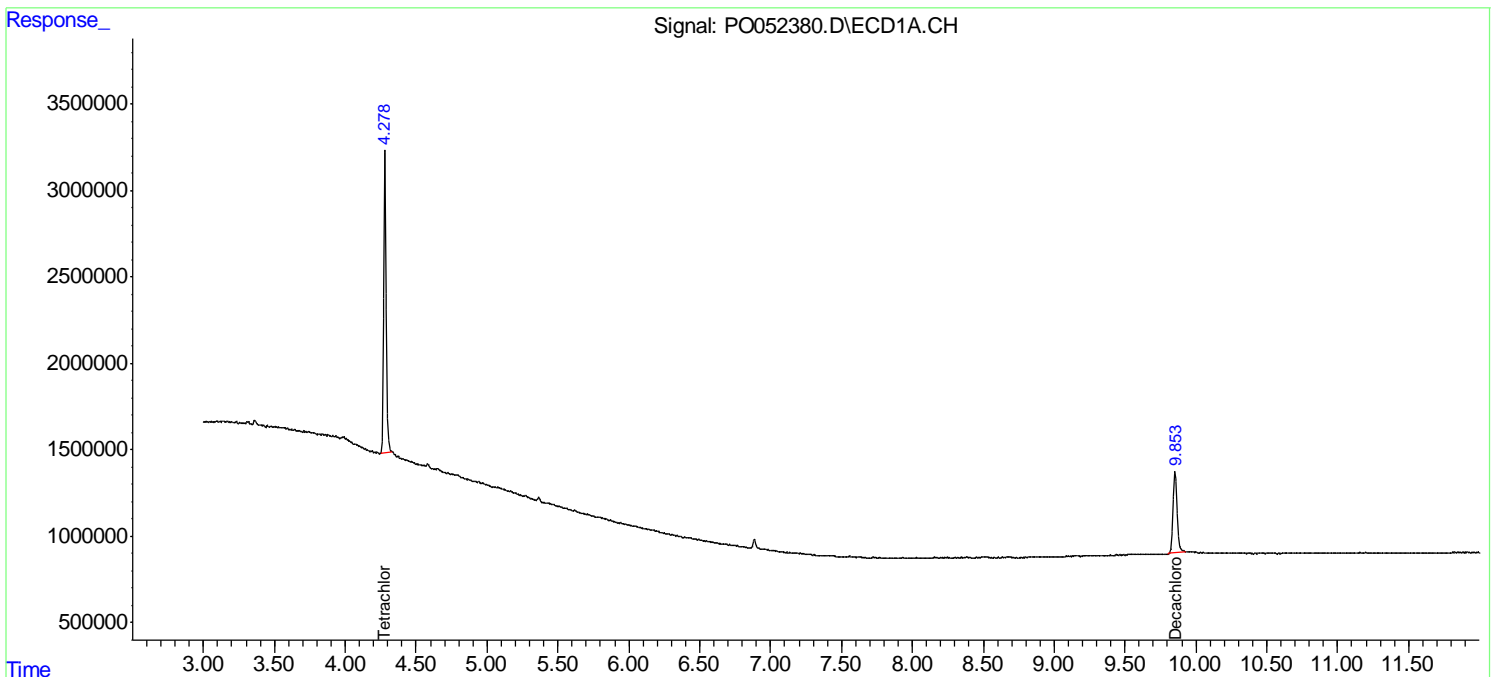
Instrument :
 ECD_O
 ClientSampleId :
 PB115475BL

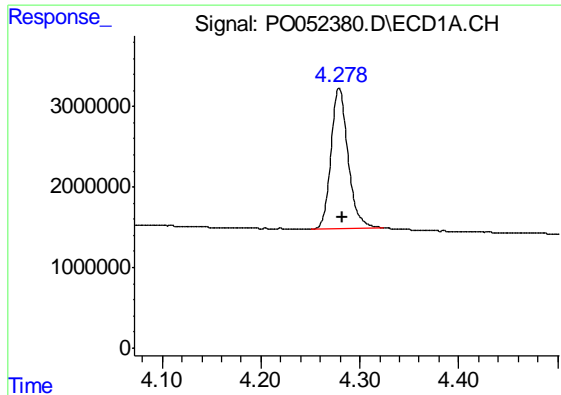
Manual Integrations
 APPROVED

Sohil
 12/12/2018 11:35:34 AM

Integration File signal 1: autoint1.e
 Integration File signal 2: autoint2.e
 Quant Time: Dec 11 02:54:46 2018
 Quant Method : Z:\pestpcbsrv\HPCHEM1\ECD_O\methods\PO120318.M
 Quant Title : GC EXTRACTABLES
 QLast Update : Tue Dec 04 03:10:39 2018
 Response via : Initial Calibration
 Integrator: ChemStation 6890 Scale Mode: Small noise peaks clipped

Volume Inj. : 2 µl
 Signal #1 Phase : ZB-MR1 Signal #2 Phase: ZB-MR2
 Signal #1 Info : 30Mx0.32mmx 0.50µ Signal #2 Info : 30M x 0.32mm x 0.25µm



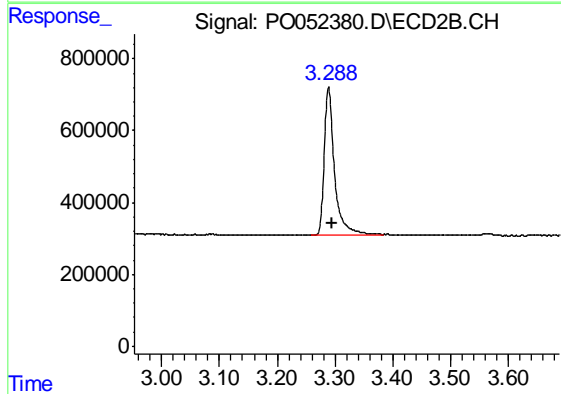


#1 Tetrachloro-m-xylene

R.T.: 4.279 min
 Delta R.T.: -0.004 min
 Response: 21032258
 Conc: 24.43 ng/ml

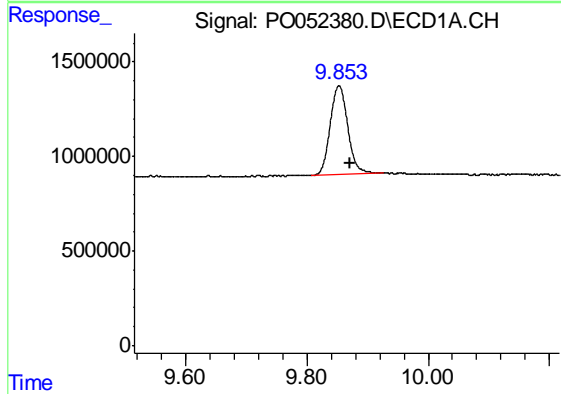
Instrument :
 ECD_O
 ClientSampleId :
 PB115475BL

Manual Integrations
 APPROVED
 Sohil
 12/12/2018 11:35:34 AM



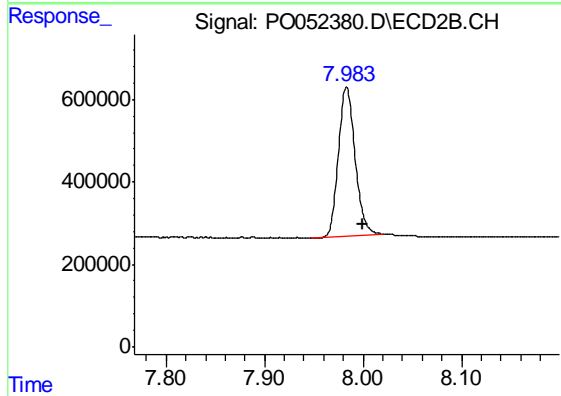
#1 Tetrachloro-m-xylene

R.T.: 3.289 min
 Delta R.T.: -0.007 min
 Response: 5090084
 Conc: 22.82 ng/ml



#2 Decachlorobiphenyl

R.T.: 9.853 min
 Delta R.T.: -0.019 min
 Response: 9487929
 Conc: 18.96 ng/ml m



#2 Decachlorobiphenyl

R.T.: 7.983 min
 Delta R.T.: -0.017 min
 Response: 4261059
 Conc: 20.44 ng/ml