

Data Path : Z:\pestpcbsrv\HPCHEM1\ECD_O\Data\PO121018\
 Data File : P0052390.D
 Signal(s) : Signal #1: ECD1A.CH Signal #2: ECD2B.CH
 Acq On : 10 Dec 2018 18:13
 Operator : SM/SJ
 Sample : J6196-05
 Misc :
 ALS Vial : 10 Sample Multiplier: 1

Instrument :
 ECD_O
ClientSampleId :
 EO-03-120718-C

Manual Integrations
APPROVED
 Sohil
 12/12/2018 11:36:47 AM

Integration File signal 1: autoint1.e
 Integration File signal 2: autoint2.e
 Quant Time: Dec 11 02:59:22 2018
 Quant Method : Z:\pestpcbsrv\HPCHEM1\ECD_O\methods\PO120318.M
 Quant Title : GC EXTRACTABLES
 QLast Update : Tue Dec 04 03:10:39 2018
 Response via : Initial Calibration
 Integrator: ChemStation 6890 Scale Mode: Small noise peaks clipped

Volume Inj. : 2 µl
 Signal #1 Phase : ZB-MR1 Signal #2 Phase: ZB-MR2
 Signal #1 Info : 30Mx0.32mmx 0.50µ Signal #2 Info : 30M x 0.32mm x 0.25µm

Compound	RT#1	RT#2	Resp#1	Resp#2	ng/ml	ng/ml

System Monitoring Compounds						
1) SA Tetrachlo...	4.270	3.289	15245237	4201851	17.708	18.840
2) SA Decachlor...	9.838	7.981	5931780	2007335	11.853m	9.629

Target Compounds

(f)=RT Delta > 1/2 Window (#)=Amounts differ by > 25% (m)=manual int.

Data Path : Z:\pestpcbsrv\HPCHEM1\ECD_O\Data\PO121018\
 Data File : PO052390.D
 Signal(s) : Signal #1: ECD1A.CH Signal #2: ECD2B.CH
 Acq On : 10 Dec 2018 18:13
 Operator : SM/SJ
 Sample : J6196-05
 Misc :
 ALS Vial : 10 Sample Multiplier: 1

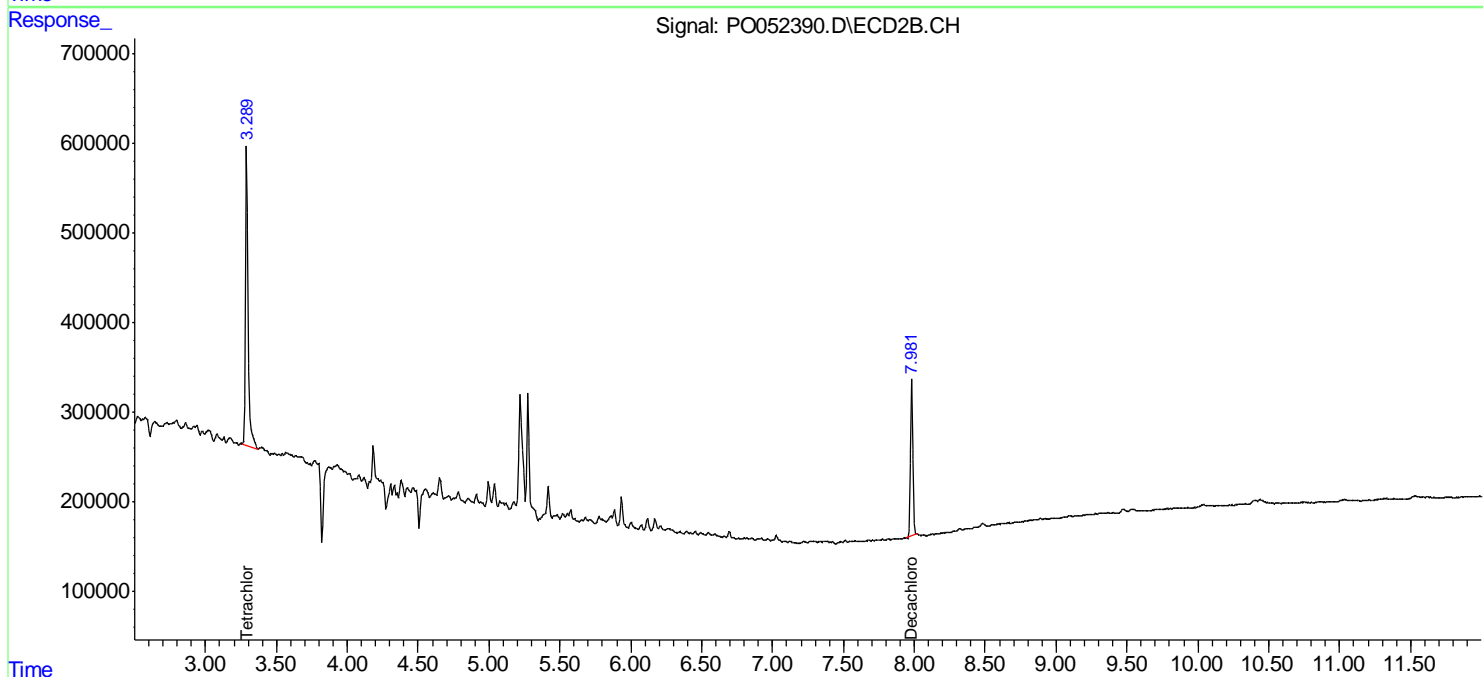
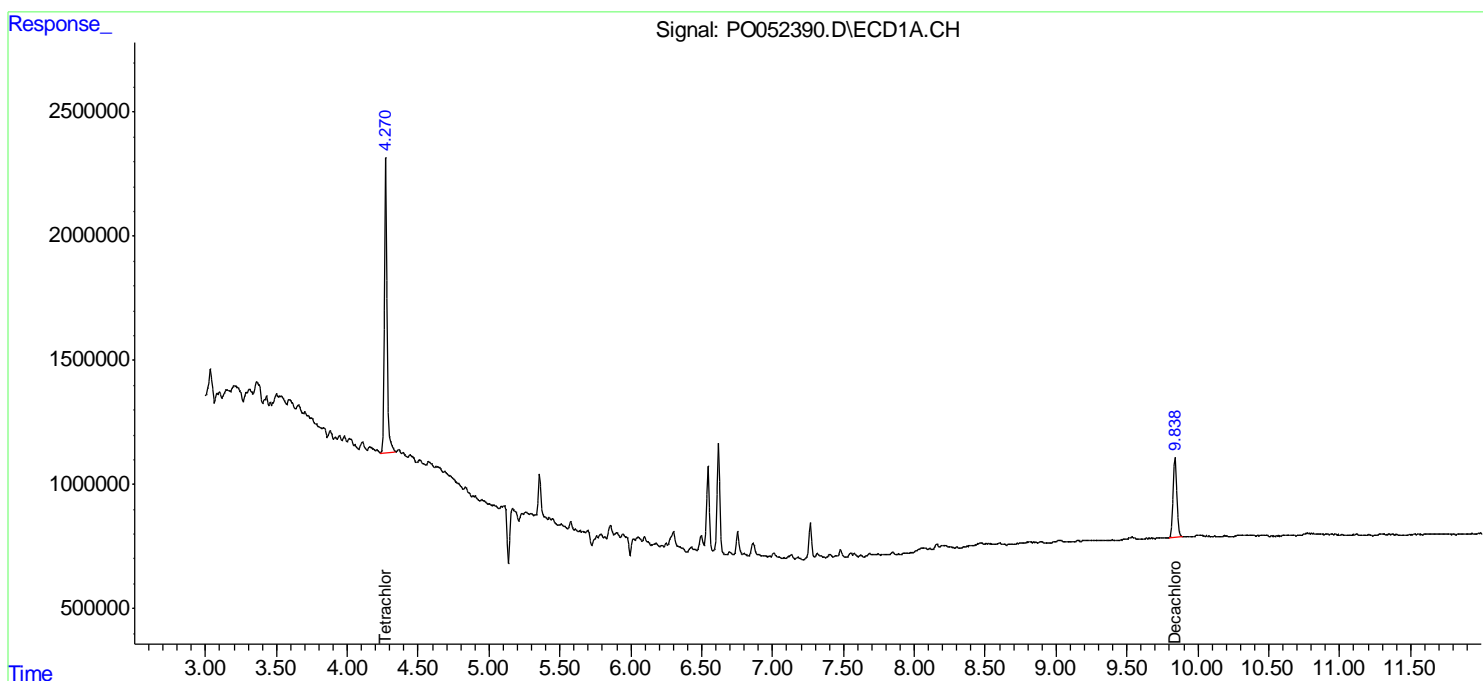
Instrument :
 ECD_O
 ClientSampleId :
 EO-03-120718-C

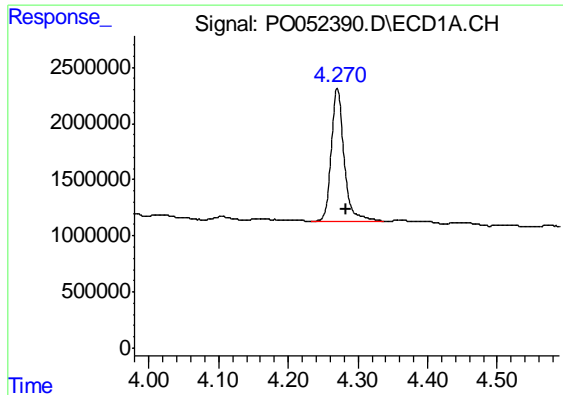
Manual Integrations
 APPROVED

Sohil
 12/12/2018 11:36:47 AM

Integration File signal 1: autoint1.e
 Integration File signal 2: autoint2.e
 Quant Time: Dec 11 02:59:22 2018
 Quant Method : Z:\pestpcbsrv\HPCHEM1\ECD_O\methods\PO120318.M
 Quant Title : GC EXTRACTABLES
 QLast Update : Tue Dec 04 03:10:39 2018
 Response via : Initial Calibration
 Integrator: ChemStation 6890 Scale Mode: Small noise peaks clipped

Volume Inj. : 2 µl
 Signal #1 Phase : ZB-MR1 Signal #2 Phase: ZB-MR2
 Signal #1 Info : 30Mx0.32mmx 0.50µ Signal #2 Info : 30M x 0.32mm x 0.25µm

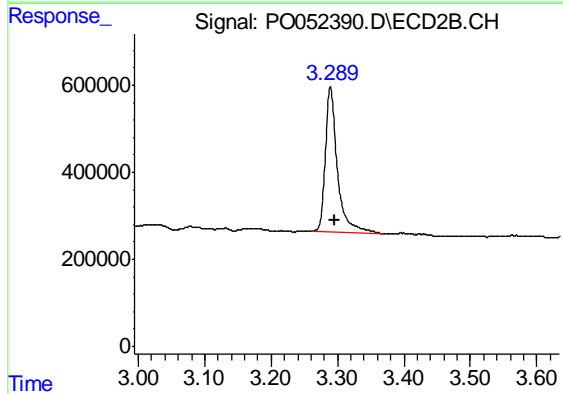




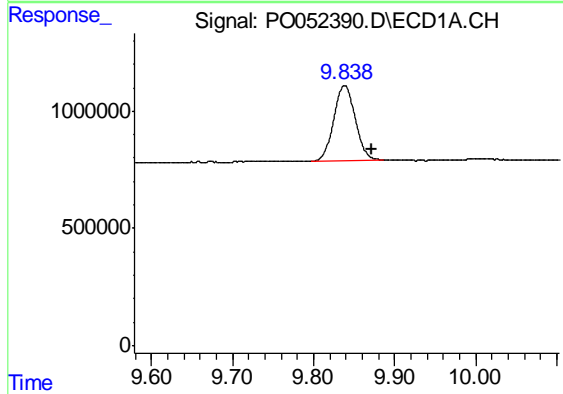
#1 Tetrachloro-m-xylene
 R.T.: 4.270 min
 Delta R.T.: -0.013 min
 Response: 15245237
 Conc: 17.71 ng/ml

Instrument :
 ECD_O
ClientSampleId :
 EO-03-120718-C

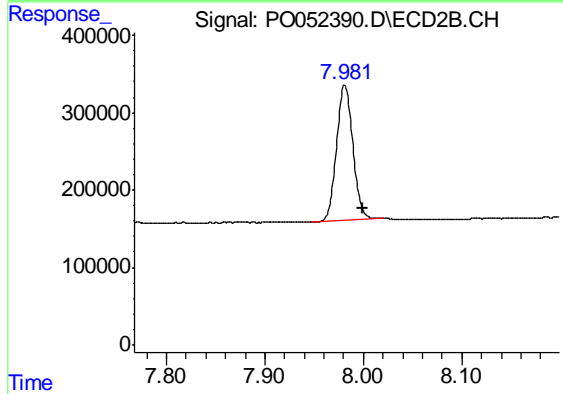
Manual Integrations
APPROVED
 Sohil
 12/12/2018 11:36:47 AM



#1 Tetrachloro-m-xylene
 R.T.: 3.289 min
 Delta R.T.: -0.007 min
 Response: 4201851
 Conc: 18.84 ng/ml



#2 Decachlorobiphenyl
 R.T.: 9.838 min
 Delta R.T.: -0.034 min
 Response: 5931780
 Conc: 11.85 ng/ml m



#2 Decachlorobiphenyl
 R.T.: 7.981 min
 Delta R.T.: -0.019 min
 Response: 2007335
 Conc: 9.63 ng/ml