

Data Path : Z:\pestpcbsrv\HPCHEM1\ECD\_0\Data\PO121020\  
 Data File : PO073637.D  
 Signal(s) : Signal #1: ECD1A.CH Signal #2: ECD2B.CH  
 Acq On : 10 Dec 2020 23:02  
 Operator : DD\AJ  
 Sample : AR1268ICC1000  
 Misc :  
 ALS Vial : 30 Sample Multiplier: 1

Instrument :  
 ECD\_0  
 ClientSampleId :  
 AR1268ICC1000

Integration File signal 1: autoint1.e  
 Integration File signal 2: autoint2.e  
 Quant Time: Dec 11 03:32:21 2020  
 Quant Method : Z:\pestpcbsrv\HPCHEM1\ECD\_0\methods\PO121020.M  
 Quant Title : GC EXTRACTABLES  
 QLast Update : Fri Dec 11 03:31:50 2020  
 Response via : Initial Calibration  
 Integrator: ChemStation 6890 Scale Mode: Small noise peaks clipped

Volume Inj. : 2 µl  
 Signal #1 Phase : ZB-MR1 Signal #2 Phase: ZB-MR2  
 Signal #1 Info : 30Mx0.32mmx 0.50µ Signal #2 Info : 30M x 0.32mm x 0.25µm

Compound	RT#1	RT#2	Resp#1	Resp#2	ng/ml	ng/ml
-----						
System Monitoring Compounds						
1) SA Tetrachlo...	4.940	4.002	9131572	5340781	99.336	97.832
2) SA Decachlor...	10.967	9.269	13953269	8411747	95.114	96.285
Target Compounds						
41) L9 AR-1268-1	9.458	8.192	13650229	9083651	973.251	963.131
42) L9 AR-1268-2	9.555	8.257	11782302	7791554	967.224	962.819
43) L9 AR-1268-3	9.781	8.464	10312505	6643834	963.128	961.299
44) L9 AR-1268-4	10.220	8.749	4474143	2711214	956.321	939.208
45) L9 AR-1268-5	10.632	9.028	31490750	19529753	970.229	982.310
-----						

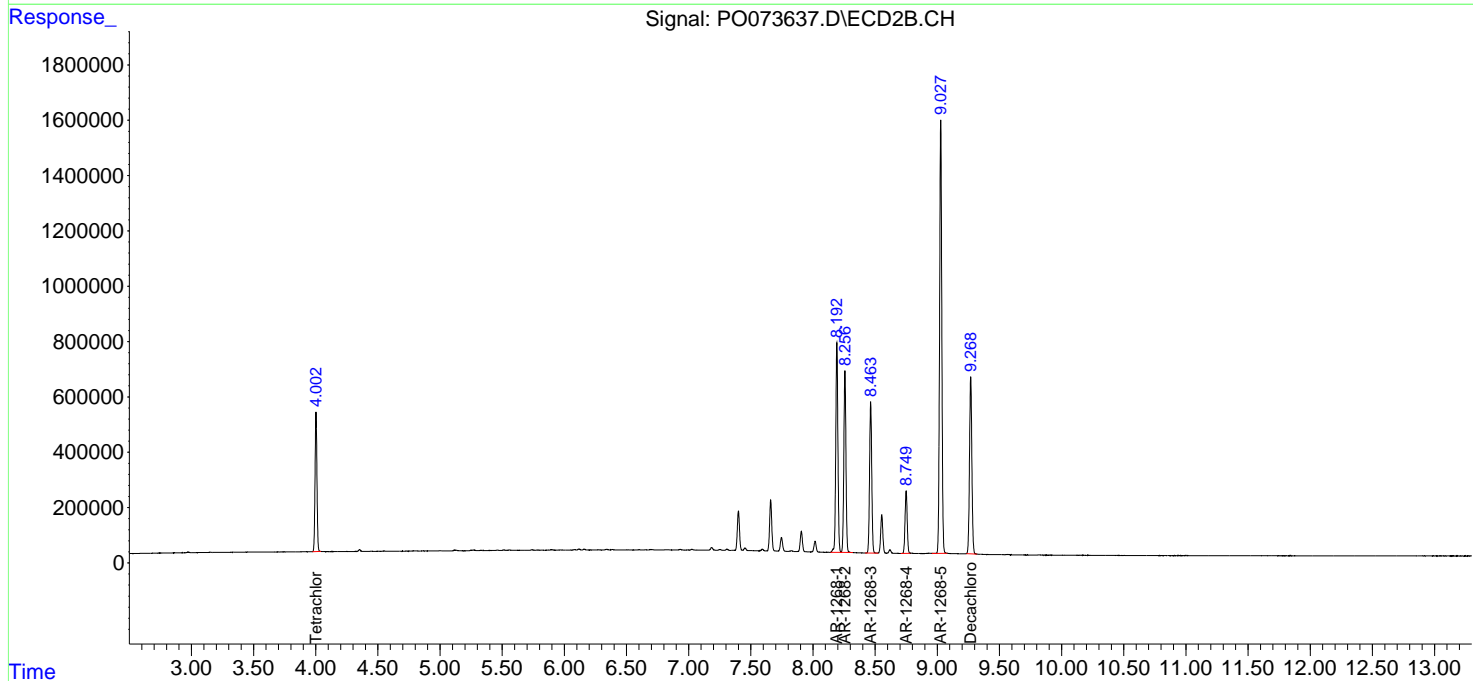
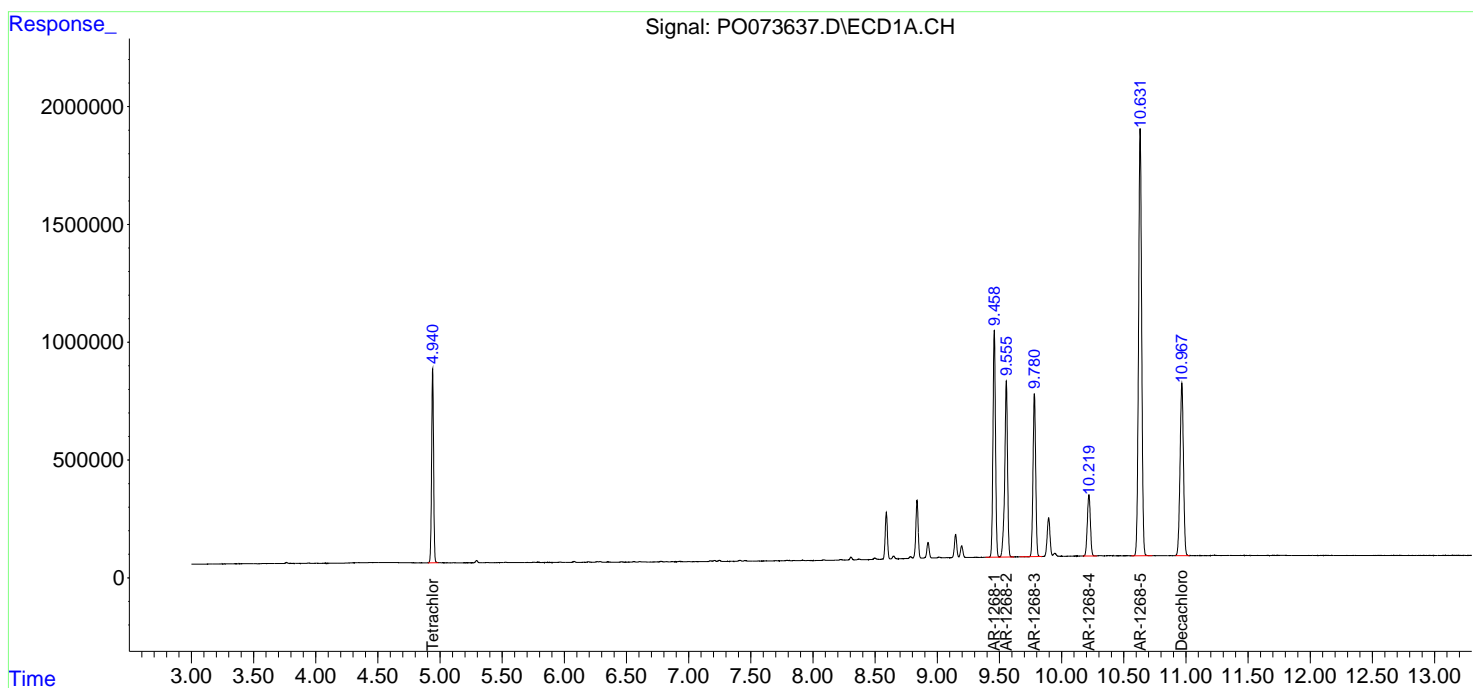
(f)=RT Delta > 1/2 Window (#)=Amounts differ by > 25% (m)=manual int.

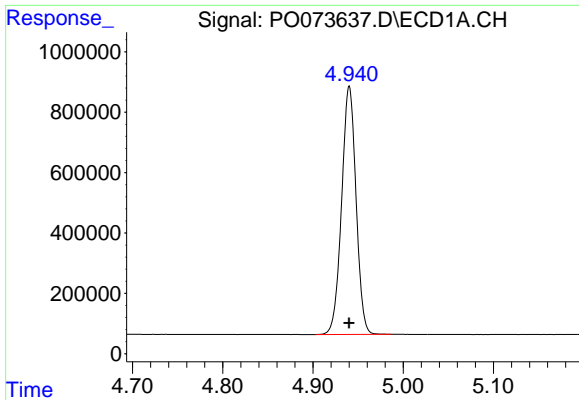
Data Path : Z:\pestpcbsrv\HPCHEM1\ECD\_0\Data\PO121020\  
 Data File : PO073637.D  
 Signal(s) : Signal #1: ECD1A.CH Signal #2: ECD2B.CH  
 Acq On : 10 Dec 2020 23:02  
 Operator : DD\AJ  
 Sample : AR1268ICC1000  
 Misc :  
 ALS Vial : 30 Sample Multiplier: 1

Instrument :  
 ECD\_O  
 ClientSampleID :  
 AR1268ICC1000

Integration File signal 1: autoint1.e  
 Integration File signal 2: autoint2.e  
 Quant Time: Dec 11 03:32:21 2020  
 Quant Method : Z:\pestpcbsrv\HPCHEM1\ECD\_0\methods\PO121020.M  
 Quant Title : GC EXTRACTABLES  
 QLast Update : Fri Dec 11 03:31:50 2020  
 Response via : Initial Calibration  
 Integrator: ChemStation 6890 Scale Mode: Small noise peaks clipped

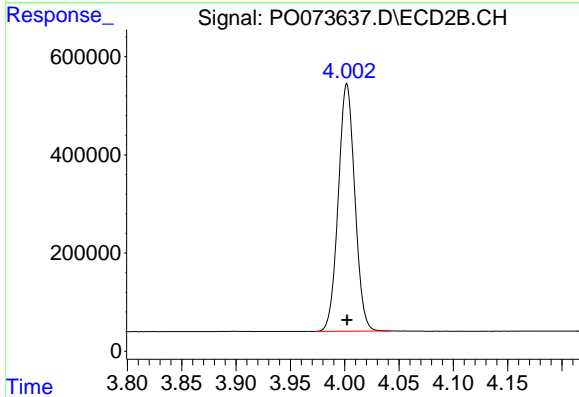
Volume Inj. : 2 µl  
 Signal #1 Phase : ZB-MR1 Signal #2 Phase: ZB-MR2  
 Signal #1 Info : 30Mx0.32mmx 0.50µ Signal #2 Info : 30M x 0.32mm x 0.25µm



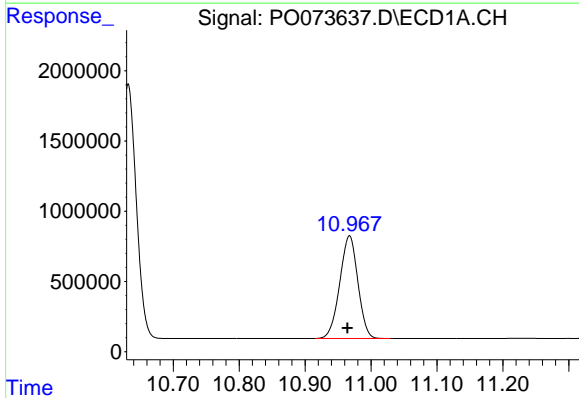


#1 Tetrachloro-m-xylene  
 R.T.: 4.940 min  
 Delta R.T.: 0.000 min  
 Response: 9131572  
 Conc: 99.34 ng/ml

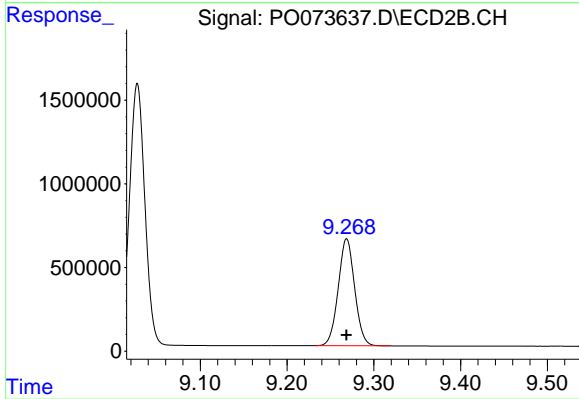
Instrument :  
 ECD\_O  
 ClientSampleId :  
 AR1268ICC1000



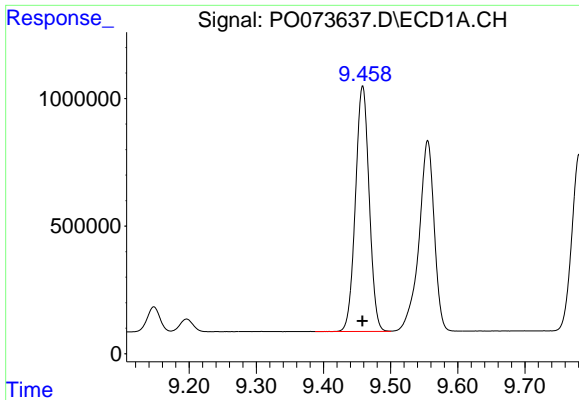
#1 Tetrachloro-m-xylene  
 R.T.: 4.002 min  
 Delta R.T.: 0.000 min  
 Response: 5340781  
 Conc: 97.83 ng/ml



#2 Decachlorobiphenyl  
 R.T.: 10.967 min  
 Delta R.T.: 0.003 min  
 Response: 13953269  
 Conc: 95.11 ng/ml



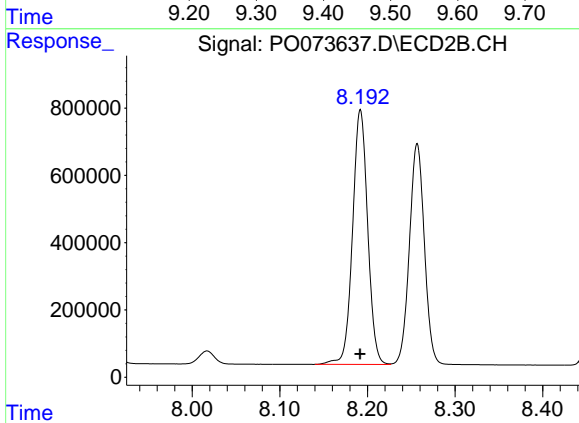
#2 Decachlorobiphenyl  
 R.T.: 9.269 min  
 Delta R.T.: 0.000 min  
 Response: 8411747  
 Conc: 96.28 ng/ml



#41 AR-1268-1

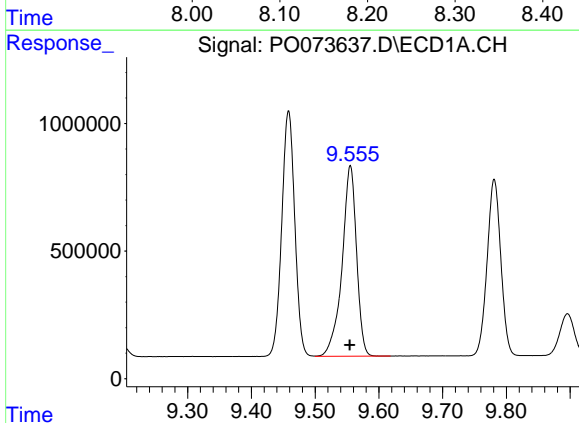
R.T.: 9.458 min  
Delta R.T.: 0.000 min  
Response: 13650229  
Conc: 973.25 ng/ml

Instrument :  
ECD\_O  
ClientSampleId :  
AR1268ICC1000



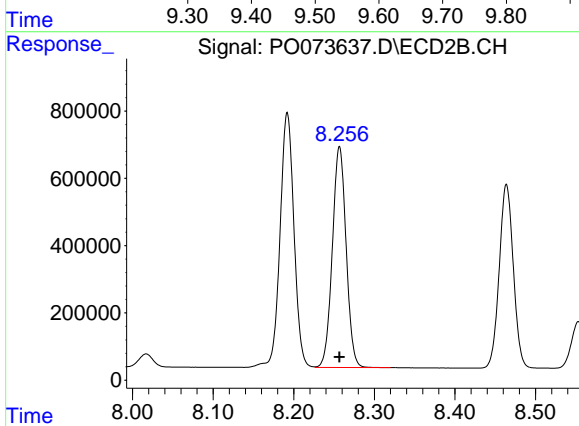
#41 AR-1268-1

R.T.: 8.192 min  
Delta R.T.: 0.000 min  
Response: 9083651  
Conc: 963.13 ng/ml



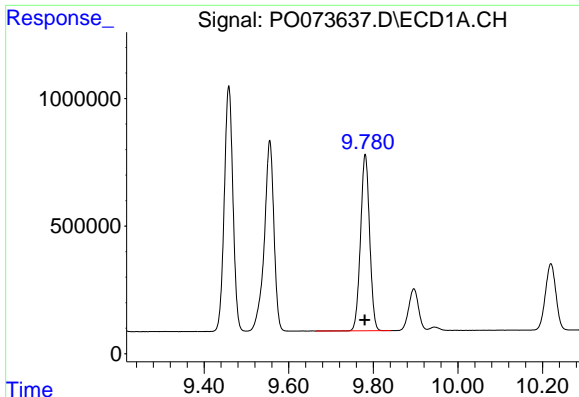
#42 AR-1268-2

R.T.: 9.555 min  
Delta R.T.: 0.000 min  
Response: 11782302  
Conc: 967.22 ng/ml



#42 AR-1268-2

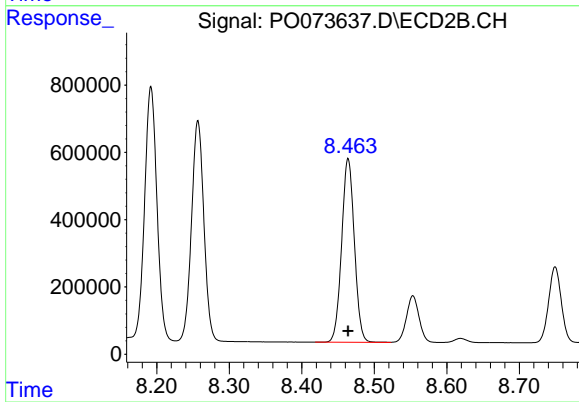
R.T.: 8.257 min  
Delta R.T.: 0.000 min  
Response: 7791554  
Conc: 962.82 ng/ml



#43 AR-1268-3

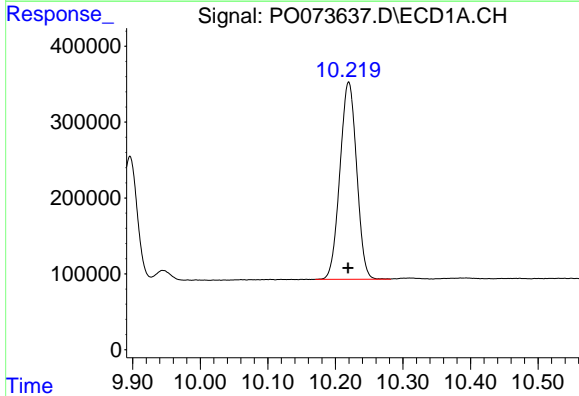
R.T.: 9.781 min  
 Delta R.T.: 0.000 min  
 Response: 10312505  
 Conc: 963.13 ng/ml

Instrument :  
 ECD\_O  
 ClientSampleId :  
 AR1268ICC1000



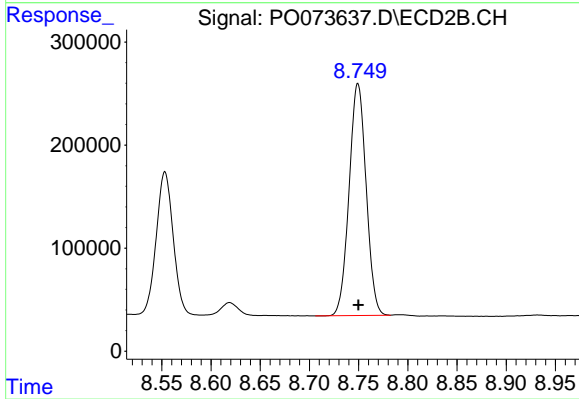
#43 AR-1268-3

R.T.: 8.464 min  
 Delta R.T.: 0.000 min  
 Response: 6643834  
 Conc: 961.30 ng/ml



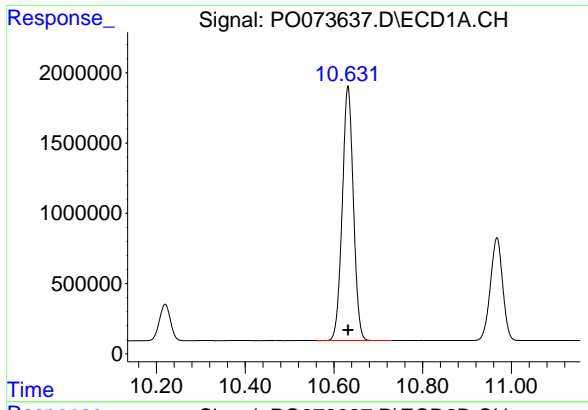
#44 AR-1268-4

R.T.: 10.220 min  
 Delta R.T.: 0.001 min  
 Response: 4474143  
 Conc: 956.32 ng/ml



#44 AR-1268-4

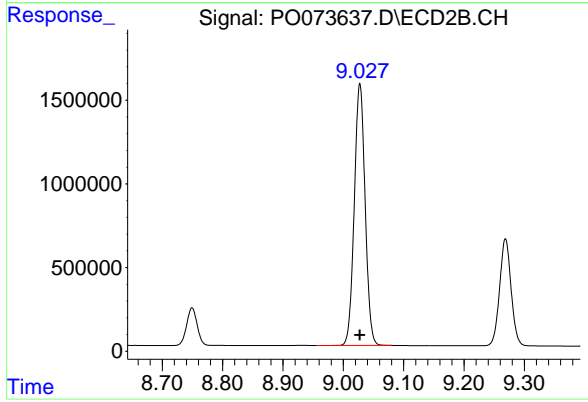
R.T.: 8.749 min  
 Delta R.T.: 0.000 min  
 Response: 2711214  
 Conc: 939.21 ng/ml



#45 AR-1268-5

R.T.: 10.632 min  
Delta R.T.: 0.000 min  
Response: 31490750  
Conc: 970.23 ng/ml

Instrument :  
ECD\_O  
ClientSampleId :  
AR1268ICC1000



#45 AR-1268-5

R.T.: 9.028 min  
Delta R.T.: 0.000 min  
Response: 19529753  
Conc: 982.31 ng/ml