

Data Path : Z:\pestpcbsrv\HPCHEM1\ECD_O\Data\PO121024\
 Data File : PO108429.D
 Signal(s) : Signal #1: ECD1A.ch Signal #2: ECD2B.ch
 Acq On : 10 Dec 2024 09:06
 Operator : YP/AJ
 Sample : HEXANE
 Misc :
 ALS Vial : 1 Sample Multiplier: 1

Instrument :
 ECD_O
ClientSampleId :
 HEXANE

Integration File signal 1: autoint1.e
 Integration File signal 2: autoint2.e
 Quant Time: Dec 11 00:28:40 2024
 Quant Method : Z:\pestpcbsrv\HPCHEM1\ECD_O\methods\PO120624.M
 Quant Title : GC EXTRACTABLES
 QLast Update : Sat Dec 07 05:58:15 2024
 Response via : Initial Calibration
 Integrator: ChemStation

Volume Inj. : 2 µl
 Signal #1 Phase : ZB-MR1 Signal #2 Phase: ZB-MR2
 Signal #1 Info : 30Mx0.32mmx 0.50µ Signal #2 Info : 30M x 0.32mm x 0.25µm

Compound	RT#1	RT#2	Resp#1	Resp#2	ng/ml	ng/ml
----------	------	------	--------	--------	-------	-------

 System Monitoring Compounds

Target Compounds

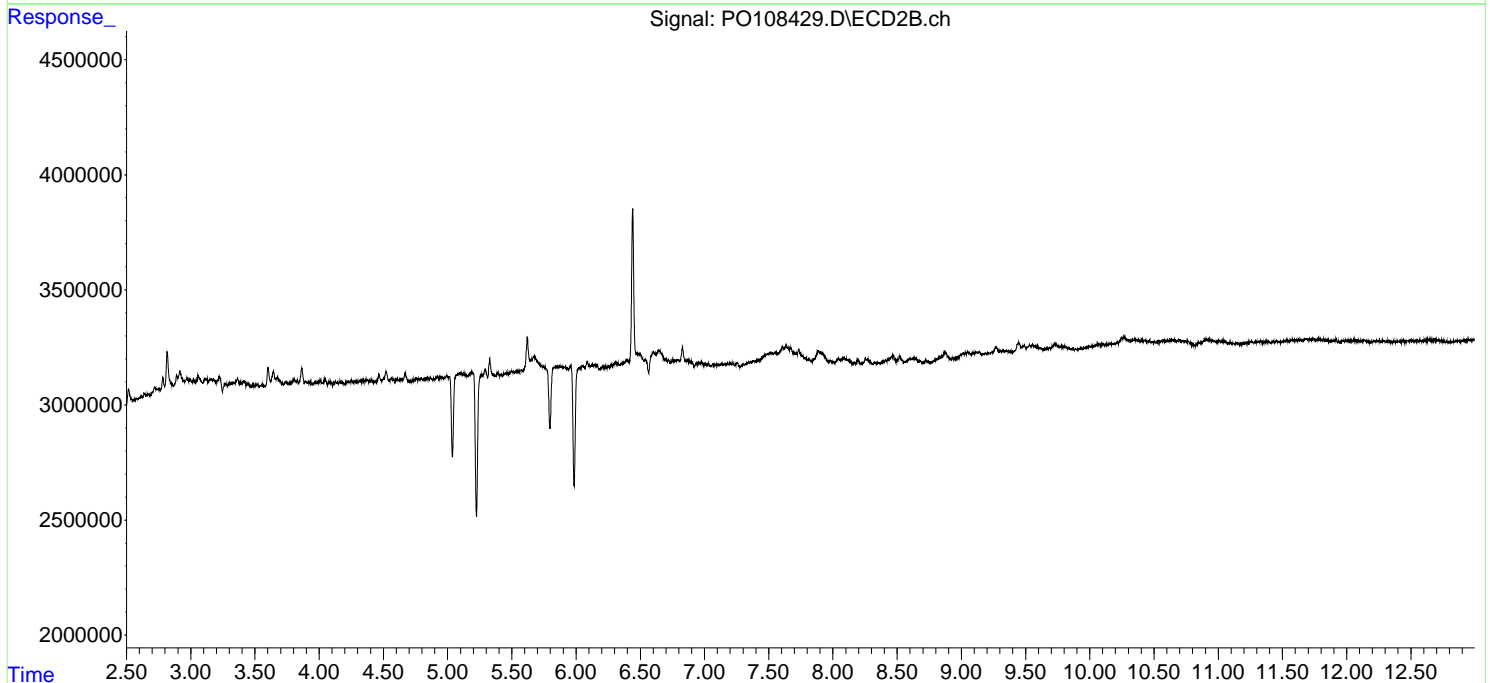
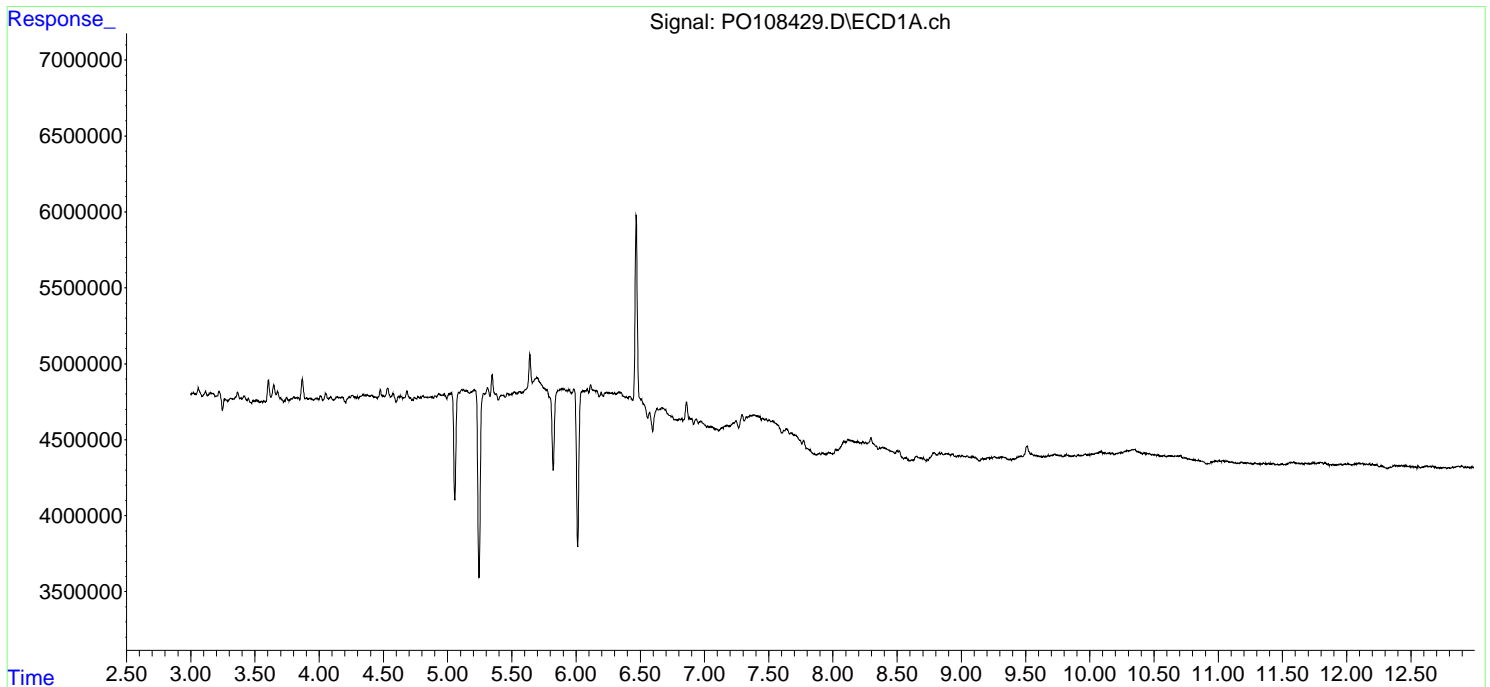
(f)=RT Delta > 1/2 Window (#)=Amounts differ by > 25% (m)=manual int.

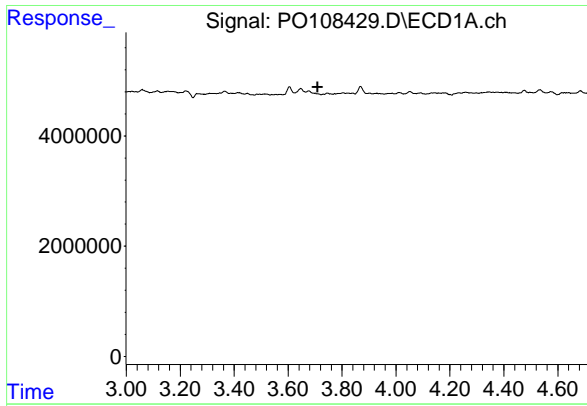
Data Path : Z:\pestpcbsrv\HPCHEM1\ECD_O\Data\PO121024\
Data File : PO108429.D
Signal(s) : Signal #1: ECD1A.ch Signal #2: ECD2B.ch
Acq On : 10 Dec 2024 09:06
Operator : YP/AJ
Sample : HEXANE
Misc :
ALS Vial : 1 Sample Multiplier: 1

Instrument :
ECD_O
ClientSampleId :
HEXANE

Integration File signal 1: autoint1.e
Integration File signal 2: autoint2.e
Quant Time: Dec 11 00:28:40 2024
Quant Method : Z:\pestpcbsrv\HPCHEM1\ECD_O\methods\PO120624.M
Quant Title : GC EXTRACTABLES
QLast Update : Sat Dec 07 05:58:15 2024
Response via : Initial Calibration
Integrator: ChemStation

Volume Inj. : 2 µl
Signal #1 Phase : ZB-MR1 Signal #2 Phase: ZB-MR2
Signal #1 Info : 30Mx0.32mmx 0.50µ Signal #2 Info : 30M x 0.32mm x 0.25µm

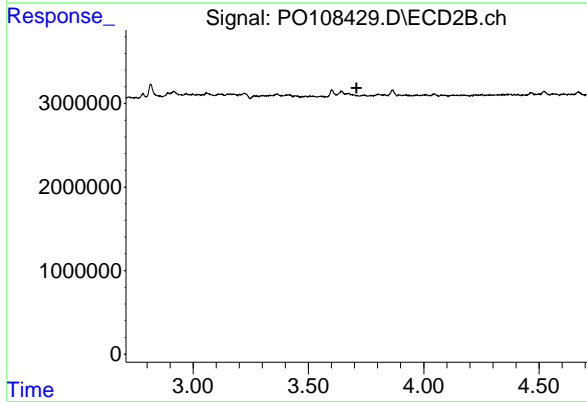




#1 Tetrachloro-m-xylene

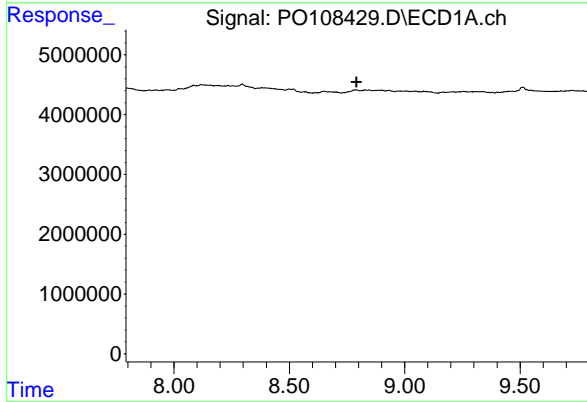
R.T.: 0.000 min
 Exp R.T. : 3.710 min
 Response: 0
 Conc: N.D.

Instrument :
 ECD_O
 ClientSampleId :
 HEXANE



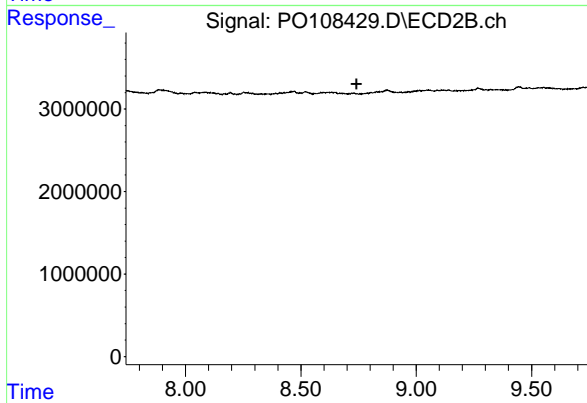
#1 Tetrachloro-m-xylene

R.T.: 0.000 min
 Exp R.T. : 3.708 min
 Response: 0
 Conc: N.D.



#2 Decachlorobiphenyl

R.T.: 0.000 min
 Exp R.T. : 8.791 min
 Response: 0
 Conc: N.D.



#2 Decachlorobiphenyl

R.T.: 0.000 min
 Exp R.T. : 8.741 min
 Response: 0
 Conc: N.D.