

Data Path : Z:\pestpcbsrv\HPCHEM1\ECD_O\Data\P0121024\
 Data File : P0108475.D
 Signal(s) : Signal #1: ECD1A.ch Signal #2: ECD2B.ch
 Acq On : 11 Dec 2024 02:27
 Operator : YP/AJ
 Sample : AR1660CCC500
 Misc :
 ALS Vial : 3 Sample Multiplier: 1

Instrument :
 ECD_O
 ClientSampleId :
 AR1660CCC500

Integration File signal 1: autoint1.e
 Integration File signal 2: autoint2.e
 Quant Time: Dec 11 02:46:23 2024
 Quant Method : Z:\pestpcbsrv\HPCHEM1\ECD_O\methods\P0120624.M
 Quant Title : GC EXTRACTABLES
 QLast Update : Sat Dec 07 05:58:15 2024
 Response via : Initial Calibration
 Integrator: ChemStation

Volume Inj. : 2 µl
 Signal #1 Phase : ZB-MR2 Signal #2 Phase: ZB-MR2
 Signal #1 Info : 30Mx0.32mmx 0.50µ Signal #2 Info : 30M x 0.32mm x 0.25µm

Compound	RT#1	RT#2	Resp#1	Resp#2	ng/ml	ng/ml

System Monitoring Compounds						
1) SA Tetrachlo...	3.706	3.706	463.8E6	289.6E6	53.305	57.136
2) SA Decachlor...	8.781	8.731	335.7E6	211.4E6	45.957	54.568
Target Compounds						
3) L1 AR-1016-1	4.804	4.794	163.7E6	92797367	530.588	578.269
4) L1 AR-1016-2	4.824	4.814	222.8E6	128.7E6	533.637	579.525
5) L1 AR-1016-3	4.880	4.990	155.4E6	71214825	530.879	565.944
6) L1 AR-1016-4	5.001	5.031	124.2E6	56893253	537.222	542.844
7) L1 AR-1016-5	5.259	5.245	133.5E6	69049708	530.632	510.681
31) L7 AR-1260-1	6.303	6.280	233.3E6	133.2E6	510.350	569.058
32) L7 AR-1260-2	6.492	6.467	282.1E6	159.9E6	507.720	570.030
33) L7 AR-1260-3	6.861	6.621	234.0E6	149.0E6	504.671	565.468
34) L7 AR-1260-4	7.122	7.093	209.3E6	123.2E6	492.128	578.904
35) L7 AR-1260-5	7.364	7.332	483.8E6	282.7E6	497.830	584.096

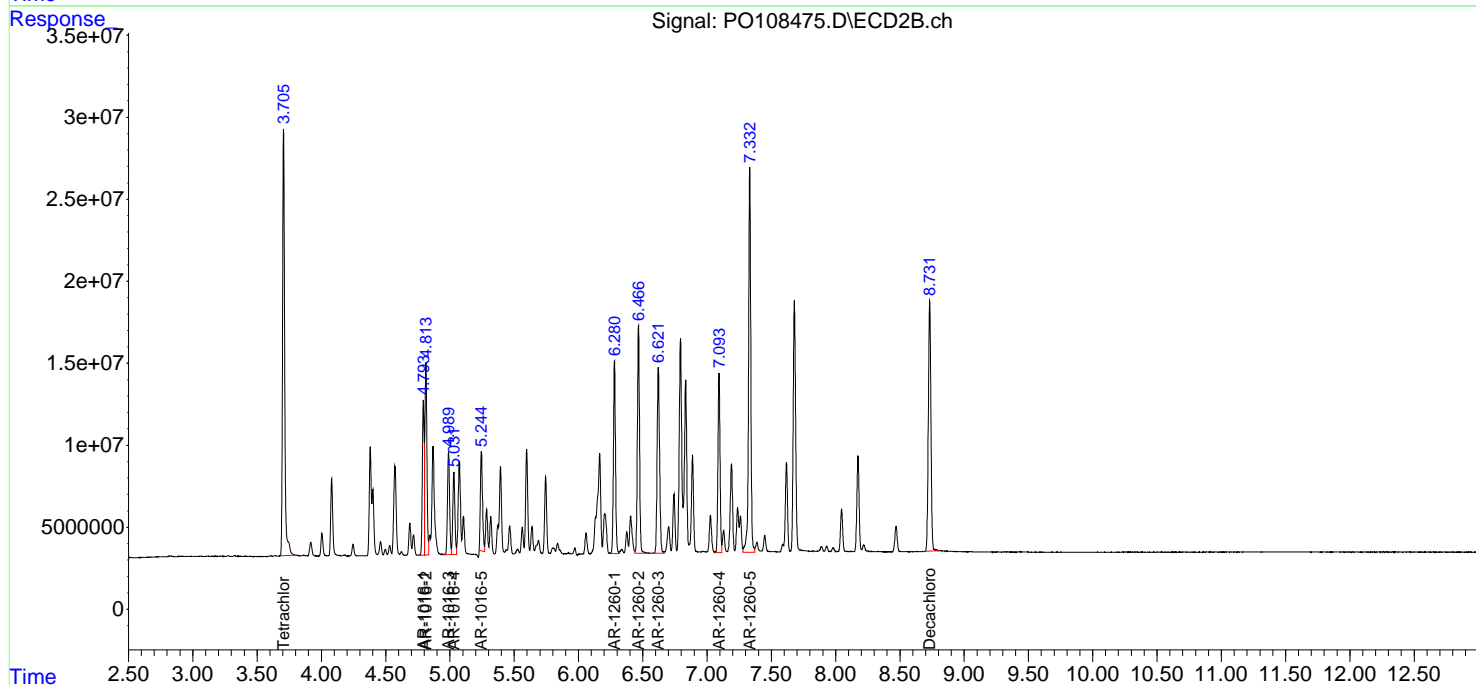
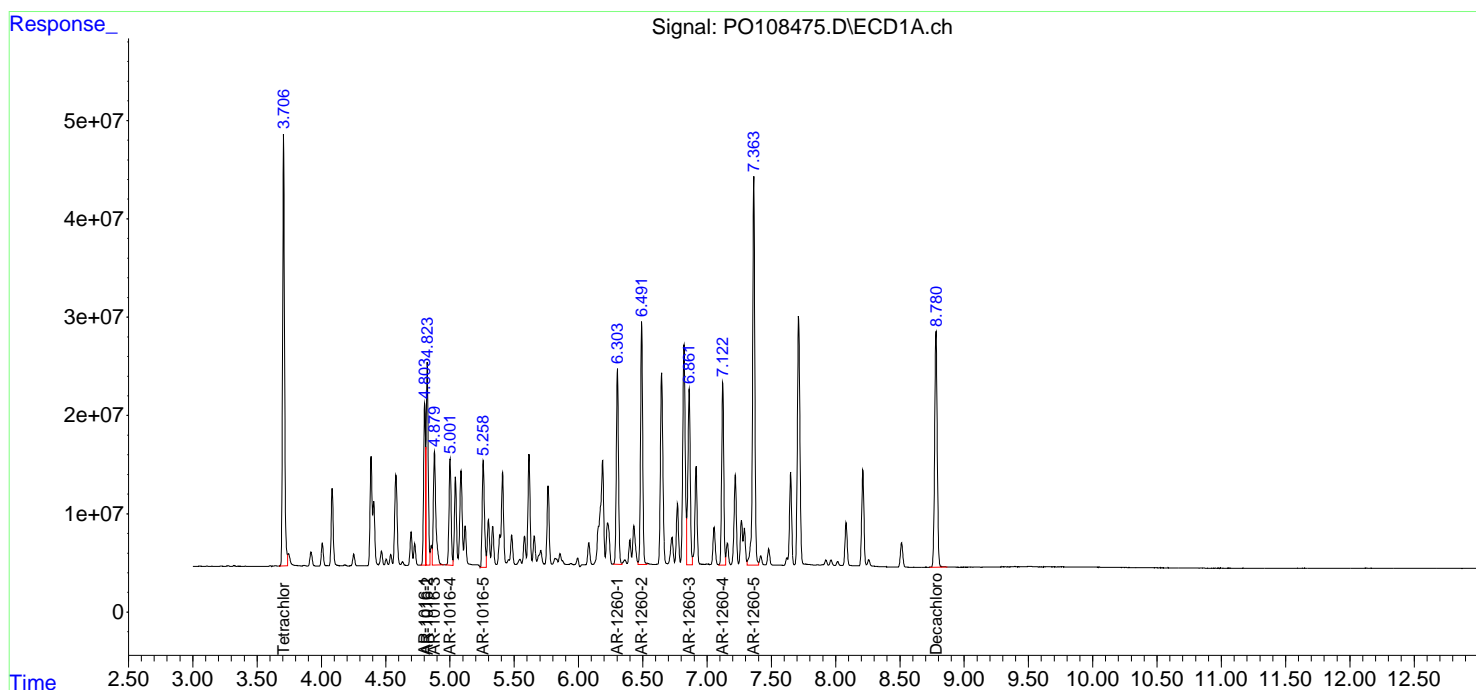
(f)=RT Delta > 1/2 Window (#)=Amounts differ by > 25% (m)=manual int.

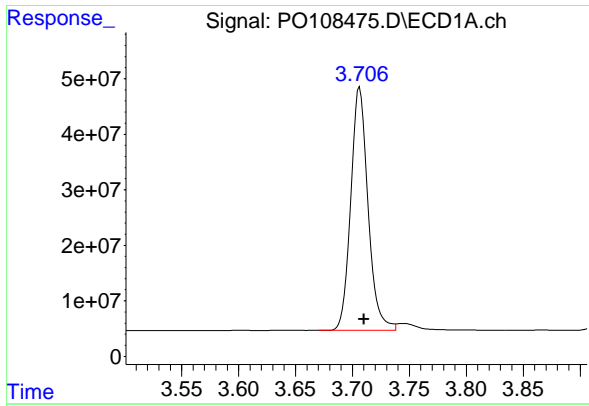
Data Path : Z:\pestpcbsrv\HPCHEM1\ECD_O\Data\PO121024\
 Data File : PO108475.D
 Signal(s) : Signal #1: ECD1A.ch Signal #2: ECD2B.ch
 Acq On : 11 Dec 2024 02:27
 Operator : YP/AJ
 Sample : AR1660CCC500
 Misc :
 ALS Vial : 3 Sample Multiplier: 1

Instrument :
 ECD_O
 ClientSampleId :
 AR1660CCC500

Integration File signal 1: autoint1.e
 Integration File signal 2: autoint2.e
 Quant Time: Dec 11 02:46:23 2024
 Quant Method : Z:\pestpcbsrv\HPCHEM1\ECD_O\methods\PO120624.M
 Quant Title : GC EXTRACTABLES
 QLast Update : Sat Dec 07 05:58:15 2024
 Response via : Initial Calibration
 Integrator: ChemStation

Volume Inj. : 2 µl
 Signal #1 Phase : ZB-MR1 Signal #2 Phase: ZB-MR2
 Signal #1 Info : 30Mx0.32mmx 0.50µm Signal #2 Info : 30M x 0.32mm x 0.25µm

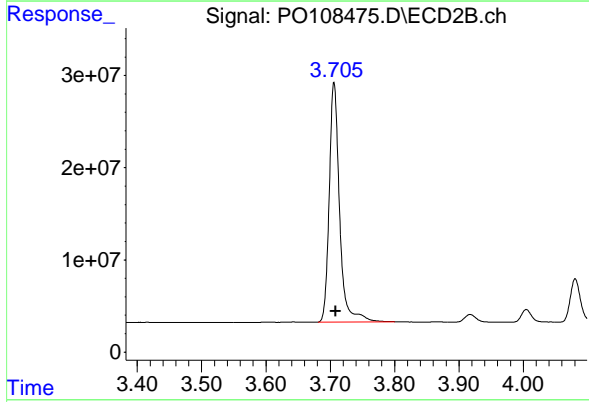




#1 Tetrachloro-m-xylene

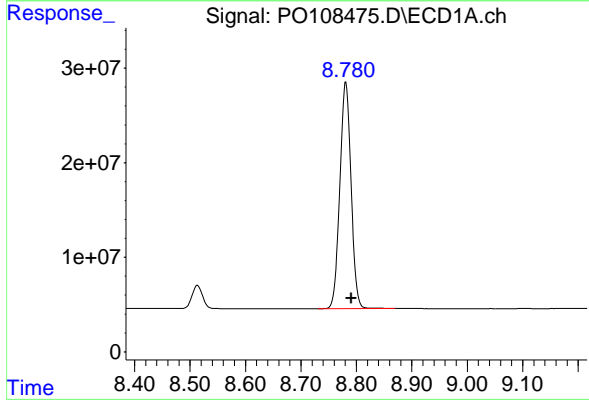
R.T.: 3.706 min
 Delta R.T.: -0.004 min
 Response: 463757832
 Conc: 53.30 ng/ml

Instrument :
 ECD_O
 ClientSampleId :
 AR1660CCC500



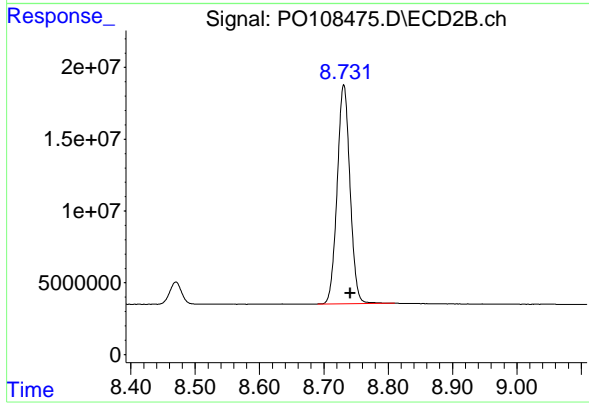
#1 Tetrachloro-m-xylene

R.T.: 3.706 min
 Delta R.T.: -0.003 min
 Response: 289644880
 Conc: 57.14 ng/ml



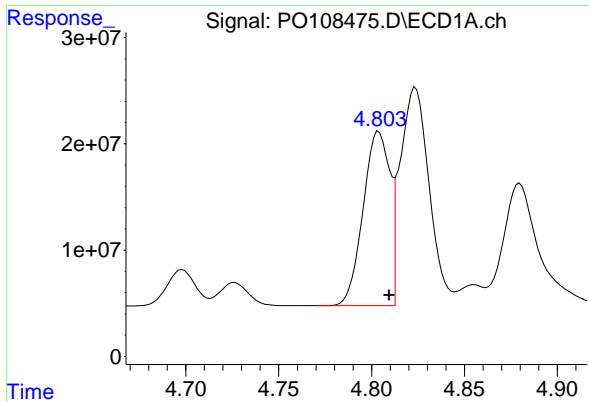
#2 Decachlorobiphenyl

R.T.: 8.781 min
 Delta R.T.: -0.010 min
 Response: 335673883
 Conc: 45.96 ng/ml



#2 Decachlorobiphenyl

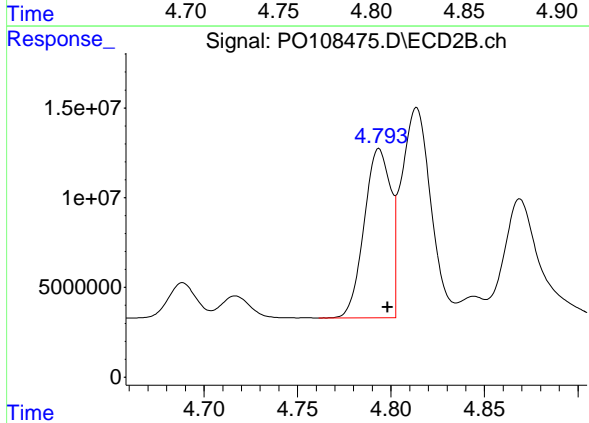
R.T.: 8.731 min
 Delta R.T.: -0.010 min
 Response: 211446472
 Conc: 54.57 ng/ml



#3 AR-1016-1

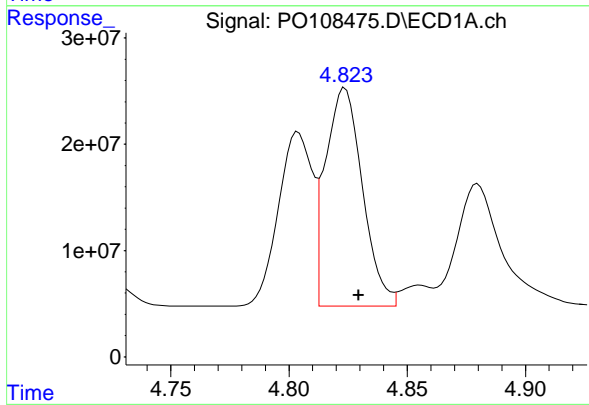
R.T.: 4.804 min
 Delta R.T.: -0.006 min
 Response: 163656368
 Conc: 530.59 ng/ml

Instrument :
 ECD_O
 ClientSampleId :
 AR1660CCC500



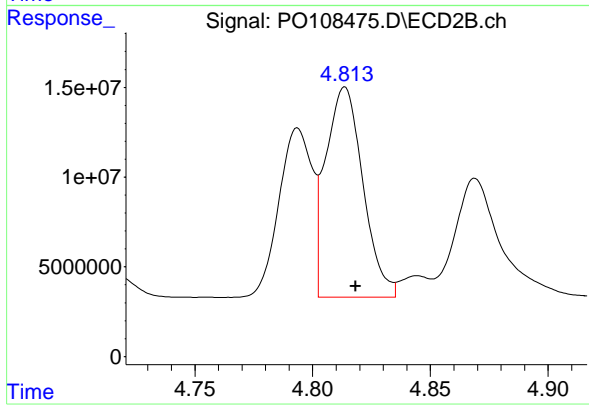
#3 AR-1016-1

R.T.: 4.794 min
 Delta R.T.: -0.004 min
 Response: 92797367
 Conc: 578.27 ng/ml



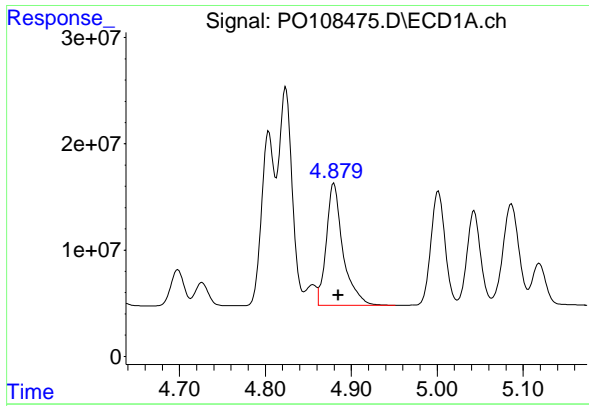
#4 AR-1016-2

R.T.: 4.824 min
 Delta R.T.: -0.006 min
 Response: 222750503
 Conc: 533.64 ng/ml



#4 AR-1016-2

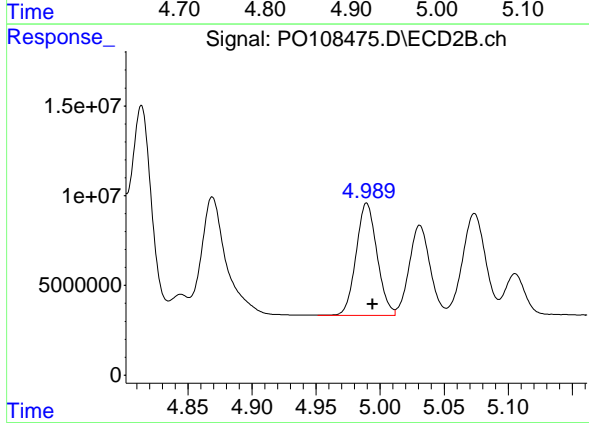
R.T.: 4.814 min
 Delta R.T.: -0.005 min
 Response: 128708342
 Conc: 579.53 ng/ml



#5 AR-1016-3

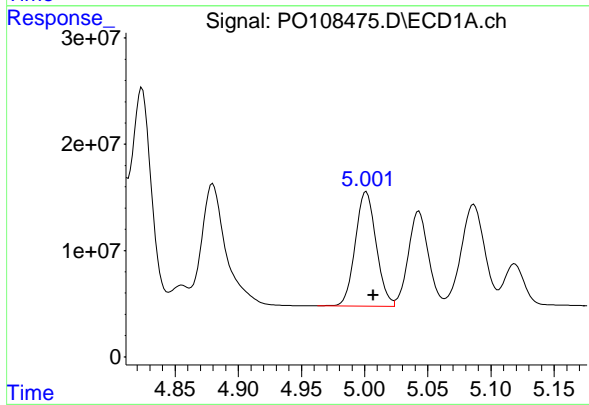
R.T.: 4.880 min
 Delta R.T.: -0.005 min
 Response: 155351666
 Conc: 530.88 ng/ml

Instrument :
 ECD_O
 ClientSampleId :
 AR1660CCC500



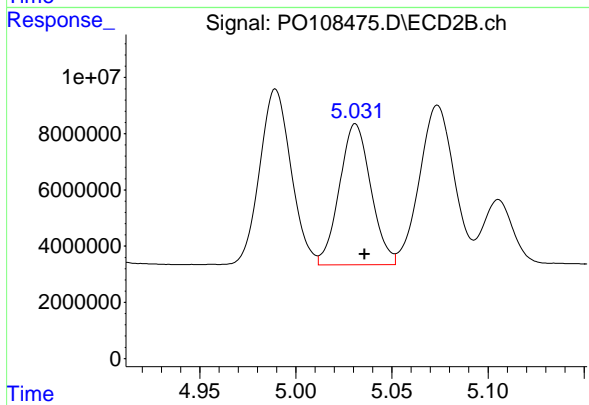
#5 AR-1016-3

R.T.: 4.990 min
 Delta R.T.: -0.005 min
 Response: 71214825
 Conc: 565.94 ng/ml



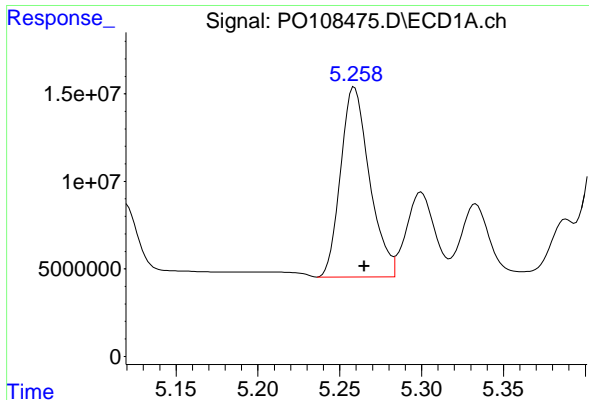
#6 AR-1016-4

R.T.: 5.001 min
 Delta R.T.: -0.006 min
 Response: 124193433
 Conc: 537.22 ng/ml



#6 AR-1016-4

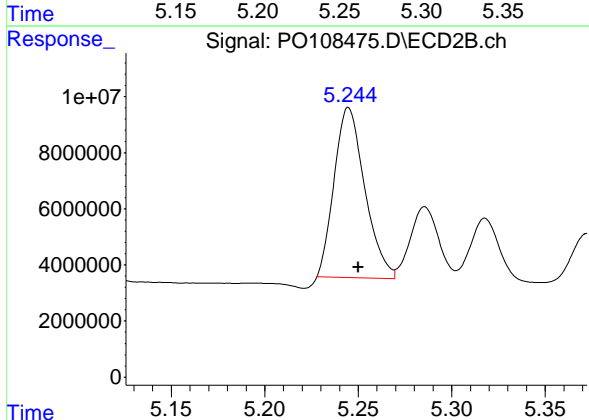
R.T.: 5.031 min
 Delta R.T.: -0.005 min
 Response: 56893253
 Conc: 542.84 ng/ml



#7 AR-1016-5

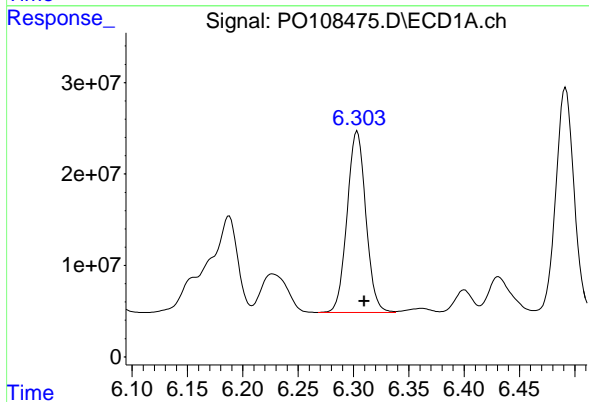
R.T.: 5.259 min
 Delta R.T.: -0.006 min
 Response: 133544137
 Conc: 530.63 ng/ml

Instrument :
 ECD_O
 ClientSampleId :
 AR1660CCC500



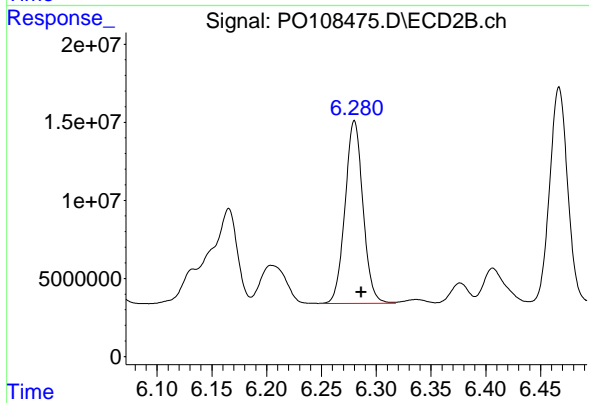
#7 AR-1016-5

R.T.: 5.245 min
 Delta R.T.: -0.005 min
 Response: 69049708
 Conc: 510.68 ng/ml



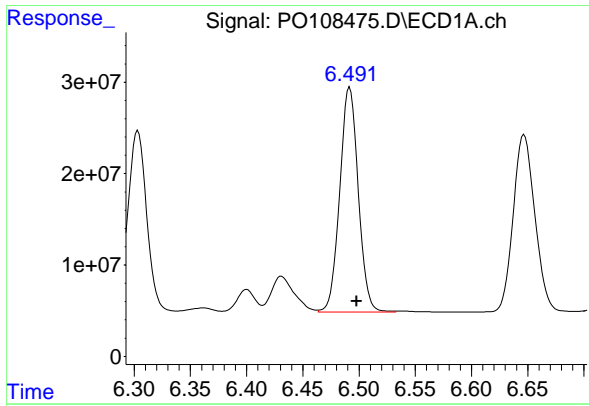
#31 AR-1260-1

R.T.: 6.303 min
 Delta R.T.: -0.006 min
 Response: 233303635
 Conc: 510.35 ng/ml



#31 AR-1260-1

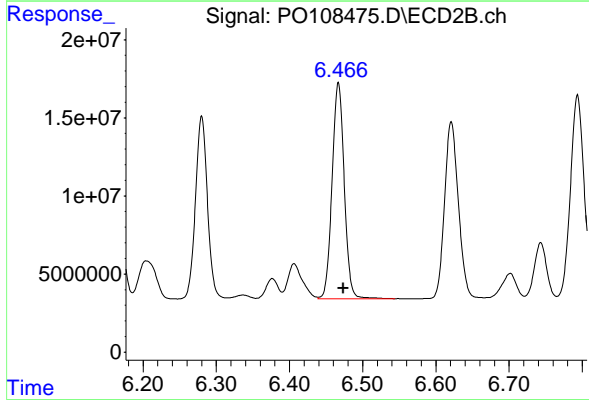
R.T.: 6.280 min
 Delta R.T.: -0.006 min
 Response: 133179703
 Conc: 569.06 ng/ml



#32 AR-1260-2

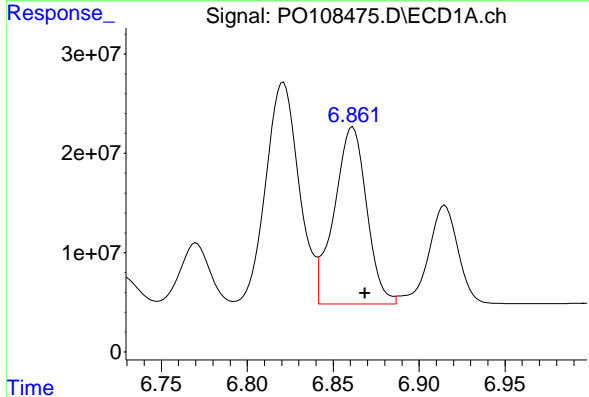
R.T.: 6.492 min
 Delta R.T.: -0.006 min
 Response: 282149808
 Conc: 507.72 ng/ml

Instrument :
 ECD_O
 ClientSampleId :
 AR1660CCC500



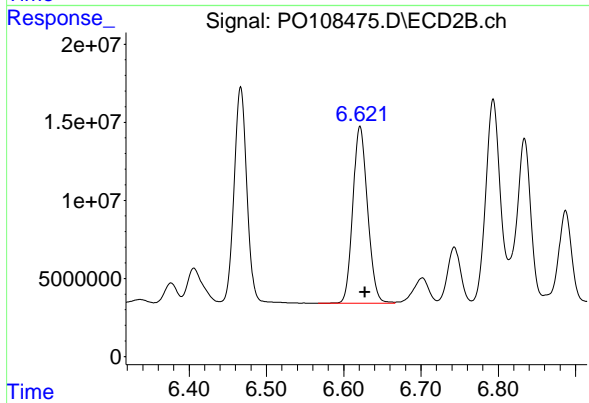
#32 AR-1260-2

R.T.: 6.467 min
 Delta R.T.: -0.007 min
 Response: 159932025
 Conc: 570.03 ng/ml



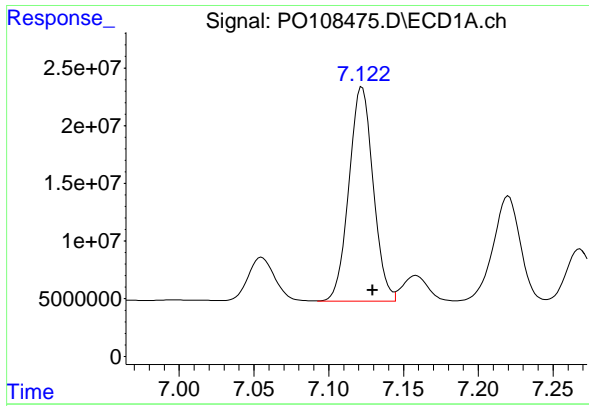
#33 AR-1260-3

R.T.: 6.861 min
 Delta R.T.: -0.007 min
 Response: 234005101
 Conc: 504.67 ng/ml



#33 AR-1260-3

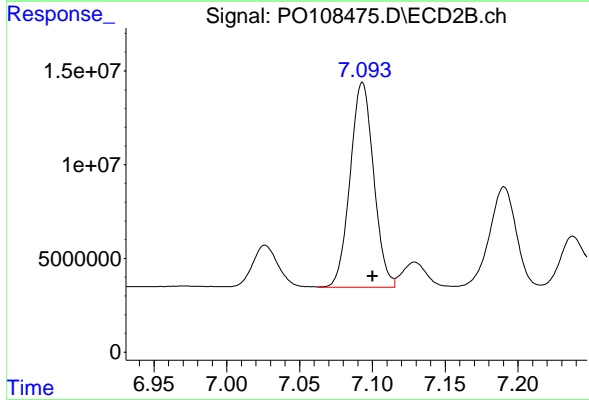
R.T.: 6.621 min
 Delta R.T.: -0.007 min
 Response: 149039305
 Conc: 565.47 ng/ml



#34 AR-1260-4

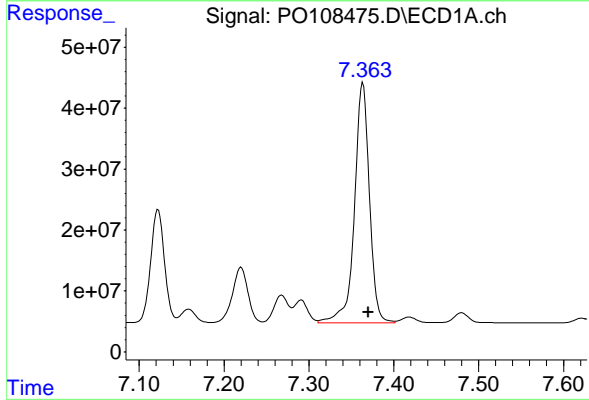
R.T.: 7.122 min
Delta R.T.: -0.007 min
Response: 209322133
Conc: 492.13 ng/ml

Instrument :
ECD_O
ClientSampleId :
AR1660CCC500



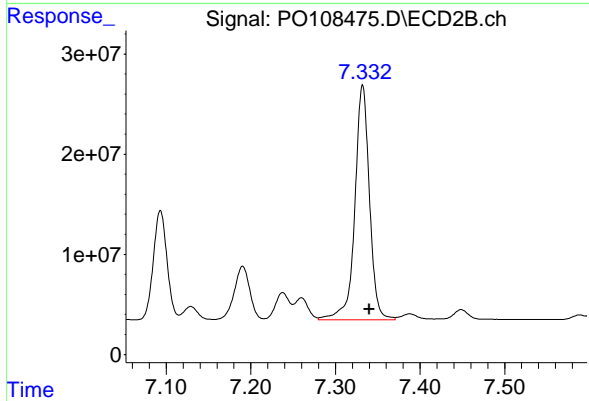
#34 AR-1260-4

R.T.: 7.093 min
Delta R.T.: -0.007 min
Response: 123161959
Conc: 578.90 ng/ml



#35 AR-1260-5

R.T.: 7.364 min
Delta R.T.: -0.006 min
Response: 483832606
Conc: 497.83 ng/ml



#35 AR-1260-5

R.T.: 7.332 min
Delta R.T.: -0.008 min
Response: 282663822
Conc: 584.10 ng/ml