

Data Path : Z:\pestpcbsrv\HPCHEM1\ECD\_0\Data\PO121123\  
 Data File : PO100389.D  
 Signal(s) : Signal #1: ECD1A.ch Signal #2: ECD2B.ch  
 Acq On : 11 Dec 2023 09:01  
 Operator : YP/AJ  
 Sample : HEXANE  
 Misc :  
 ALS Vial : 1 Sample Multiplier: 1

Instrument :  
 ECD\_0  
 ClientSampleId :

Integration File signal 1: autoint1.e  
 Integration File signal 2: autoint2.e  
 Quant Time: Dec 11 12:12:08 2023  
 Quant Method : Z:\pestpcbsrv\HPCHEM1\ECD\_0\methods\PO120823.M  
 Quant Title : GC EXTRACTABLES  
 QLast Update : Mon Dec 11 00:11:33 2023  
 Response via : Initial Calibration  
 Integrator: ChemStation

Volume Inj. : 2 µl  
 Signal #1 Phase : ZB-MR1 Signal #2 Phase: ZB-MR2  
 Signal #1 Info : 30Mx0.32mmx 0.50µ Signal #2 Info : 30M x 0.32mm x 0.25µm

Compound	RT#1	RT#2	Resp#1	Resp#2	ng/ml	ng/ml
-----						
System Monitoring Compounds						
1) SA Tetrachlo...	4.482	3.699	215452	157842	0.086	0.072
2) SA Decachlor...	10.347	8.788	106335	208907	0.076	0.129 #
Target Compounds						
3) L1 AR-1016-1	5.678	4.797	237847	41817	3.553	0.947 #
4) L1 AR-1016-2	5.686	4.816	87577	41524	0.869	0.691
5) L1 AR-1016-3	5.755	4.975	227739	36929	3.540	1.137 #
6) L1 AR-1016-4	5.851	5.057	53789	128752	1.048	4.590 #
7) L1 AR-1016-5	6.141	5.276	29555	69537	0.555	1.978 #
8) L2 AR-1221-1	4.694	3.929	50733	161355	1.888	6.720 #
9) L2 AR-1221-2	4.778	4.004	70915	83297	3.558	4.689 #
10) L2 AR-1221-3	4.839	4.073	45996	51780	0.742	1.059 #
11) L3 AR-1232-1	4.839	4.073	45996	51780	0.959	1.340 #
12) L3 AR-1232-2	5.387	4.816	53693	41524	2.016	1.545
13) L3 AR-1232-3	5.678	4.975	237847	36929	5.416	2.585 #
14) L3 AR-1232-4	5.851	5.078	53789	53731	2.466	3.826 #
15) L3 AR-1232-5	5.950	5.276	275521	69537	14.395	4.824 #
16) L4 AR-1242-1	5.640	4.797	97583	41817	1.873	1.196 #
17) L4 AR-1242-2	5.678	4.816	237847	41524	3.063	0.884 #
18) L4 AR-1242-3	5.755	4.975	227739	36929	4.537	1.469 #
19) L4 AR-1242-4	5.851	5.078	53789	53731	1.358	1.967 #
20) L4 AR-1242-5	6.596	5.564f	101688	63388	2.907	2.024 #
21) L5 AR-1248-1	5.678	4.797	237847	41817	6.073	1.529 #
22) L5 AR-1248-2	5.950	5.057	275521	128752	4.163	3.267
23) L5 AR-1248-3	6.141	5.078	29555	53731	0.415	1.289 #
24) L5 AR-1248-4	6.550	5.276	167598	69537	2.658	1.429 #
25) L5 AR-1248-5	6.596	5.693f	101688	437658	1.659	10.259 #
26) L6 AR-1254-1	6.508	5.564f	62637	63388	0.736	0.807
27) L6 AR-1254-2	6.736	5.765	41660	45301	0.335	0.643 #
28) L6 AR-1254-3	7.123	6.166	67013	93040	0.561	0.768 #
29) L6 AR-1254-4	7.408	6.407	35234	107139	0.508	1.632 #
30) L6 AR-1254-5	7.824	6.829	27735	134570	0.338	1.219 #
31) L7 AR-1260-1	7.283	6.315	72813	103489	0.749	1.177 #
32) L7 AR-1260-2	7.556	6.498	124335	42246	1.263	0.414 #
33) L7 AR-1260-3	7.898	6.650	47790	88796	0.615	0.893 #
34) L7 AR-1260-4	8.125	7.138	102411	68616	1.218	0.788 #
35) L7 AR-1260-5	8.464	7.423f	113820	636990	0.817	3.464 #
36) L8 AR-1262-1	7.824	6.829	27735	134570	0.415	2.328 #
37) L8 AR-1262-2	8.464	7.111	113820	101300	0.705	0.887 #
38) L8 AR-1262-3	8.776	7.666	32714	106464	0.291	1.338 #
39) L8 AR-1262-4	8.878	7.732	29882	79020	0.333	0.518 #
40) L8 AR-1262-5	9.552	8.224	23247	40801	0.483	0.672 #
41) L9 AR-1268-1	8.776	7.666	32714	106464	0.151	0.425 #

Data Path : Z:\pestpcbsrv\HPCHEM1\ECD\_0\Data\PO121123\  
 Data File : PO100389.D  
 Signal(s) : Signal #1: ECD1A.ch Signal #2: ECD2B.ch  
 Acq On : 11 Dec 2023 09:01  
 Operator : YP/AJ  
 Sample : HEXANE  
 Misc :  
 ALS Vial : 1 Sample Multiplier: 1

Instrument :  
 ECD\_0  
 ClientSampleId :

Integration File signal 1: autoint1.e  
 Integration File signal 2: autoint2.e  
 Quant Time: Dec 11 12:12:08 2023  
 Quant Method : Z:\pestpcbsrv\HPCHEM1\ECD\_0\methods\PO120823.M  
 Quant Title : GC EXTRACTABLES  
 QLast Update : Mon Dec 11 00:11:33 2023  
 Response via : Initial Calibration  
 Integrator: ChemStation

Volume Inj. : 2 µl  
 Signal #1 Phase : ZB-MR1 Signal #2 Phase: ZB-MR2  
 Signal #1 Info : 30Mx0.32mmx 0.50µ Signal #2 Info : 30M x 0.32mm x 0.25µm

	Compound	RT#1	RT#2	Resp#1	Resp#2	ng/ml	ng/ml
42)	L9 AR-1268-2	8.878	7.732	29882	79020	0.156	0.341 #
43)	L9 AR-1268-3	9.128	7.930	126800	79103	0.696	0.361 #
44)	L9 AR-1268-4	9.552	8.224	23247	40801	0.433	0.596 #
45)	L9 AR-1268-5	9.997	8.519	-14421	20170	N.D.	0.035 #

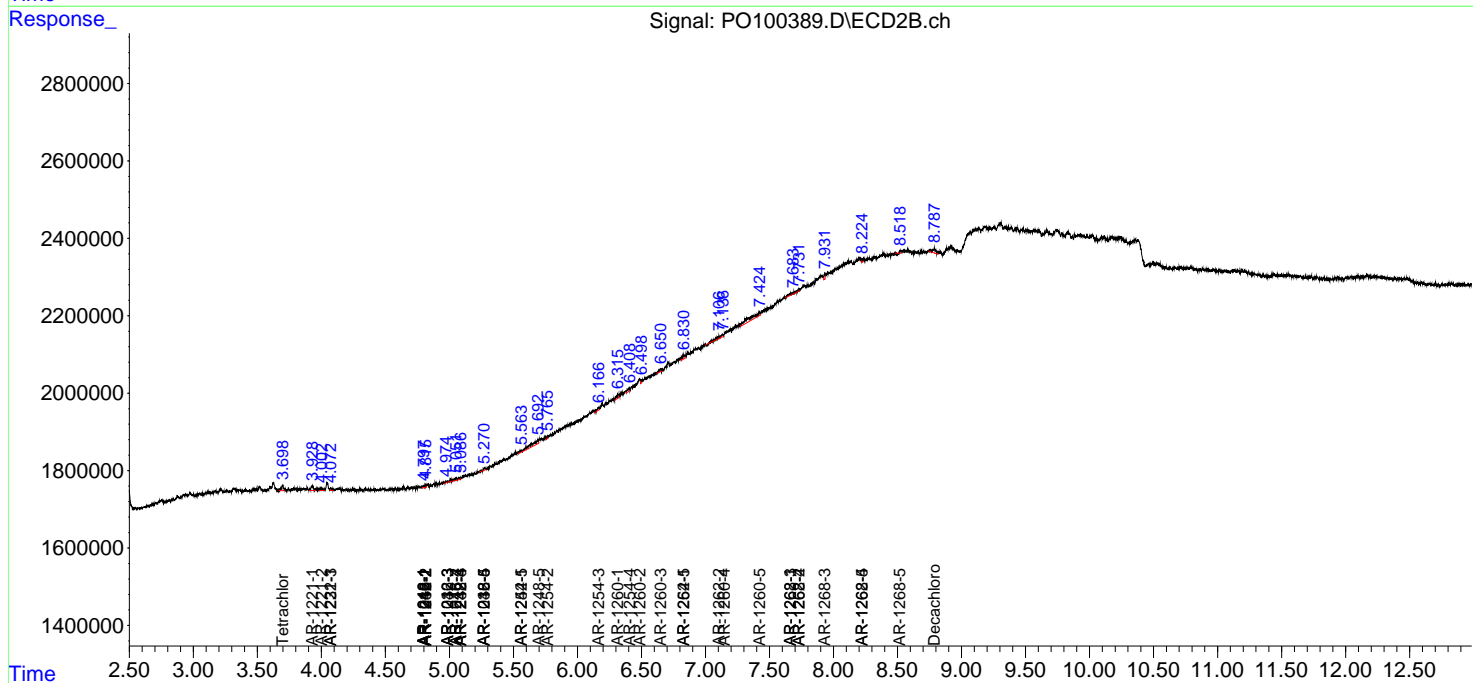
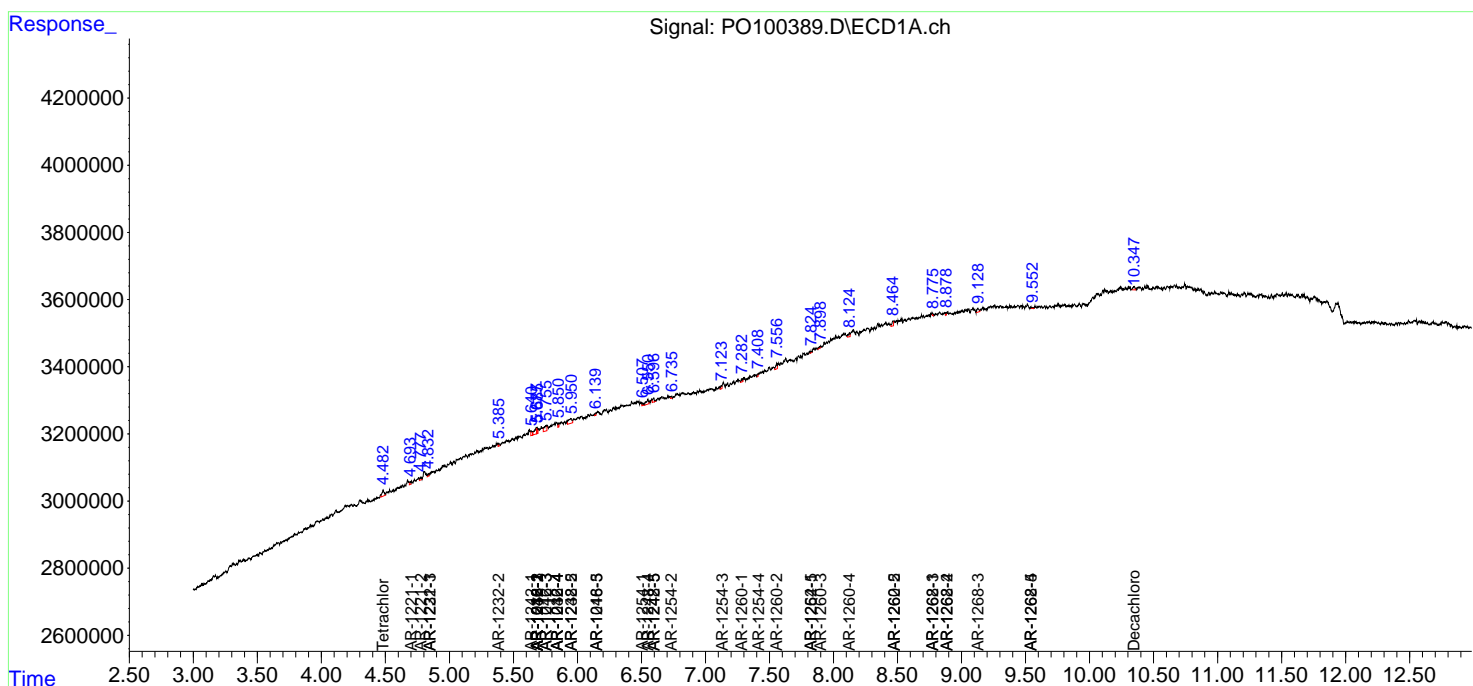
(f)=RT Delta > 1/2 Window (#)=Amounts differ by > 25% (m)=manual int.

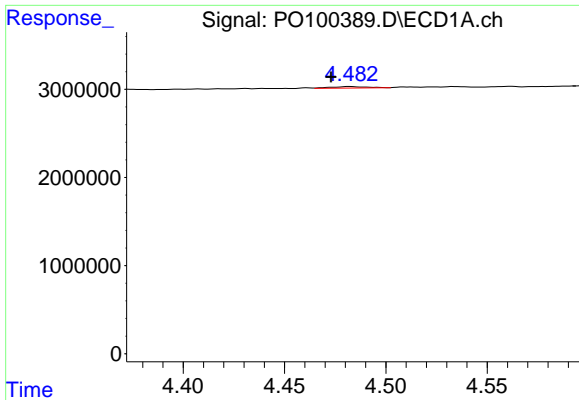
Data Path : Z:\pestpcbsrv\HPCHEM1\ECD\_O\Data\PO121123\  
 Data File : PO100389.D  
 Signal(s) : Signal #1: ECD1A.ch Signal #2: ECD2B.ch  
 Acq On : 11 Dec 2023 09:01  
 Operator : YP/AJ  
 Sample : HEXANE  
 Misc :  
 ALS Vial : 1 Sample Multiplier: 1

Instrument :  
 ECD\_O  
 ClientSampleId :

Integration File signal 1: autoint1.e  
 Integration File signal 2: autoint2.e  
 Quant Time: Dec 11 12:12:08 2023  
 Quant Method : Z:\pestpcbsrv\HPCHEM1\ECD\_O\methods\PO120823.M  
 Quant Title : GC EXTRACTABLES  
 QLast Update : Mon Dec 11 00:11:33 2023  
 Response via : Initial Calibration  
 Integrator: ChemStation

Volume Inj. : 2 µl  
 Signal #1 Phase : ZB-MR1 Signal #2 Phase: ZB-MR2  
 Signal #1 Info : 30Mx0.32mmx 0.50µ Signal #2 Info : 30M x 0.32mm x 0.25µm

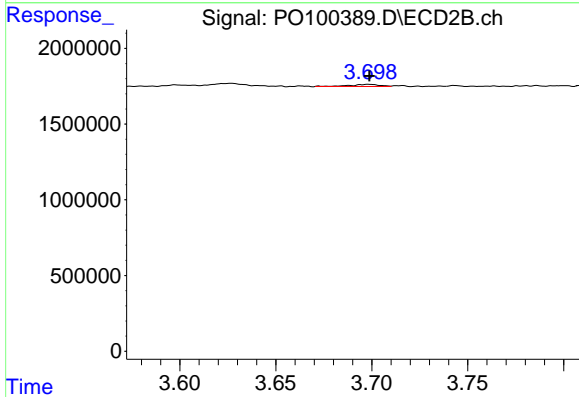




#1 Tetrachloro-m-xylene

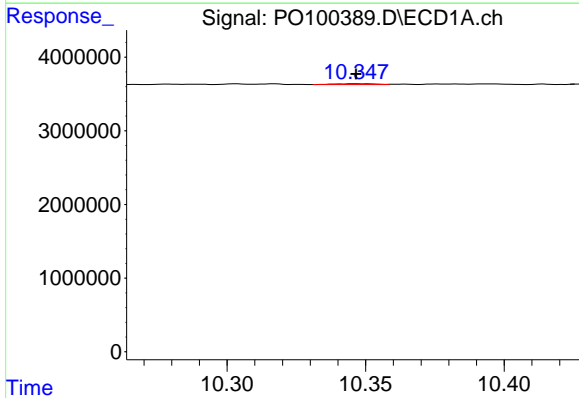
R.T.: 4.482 min  
 Delta R.T.: 0.009 min  
 Response: 215452  
 Conc: 0.09 ng/ml

Instrument :  
 ECD\_O  
 ClientSampleId :



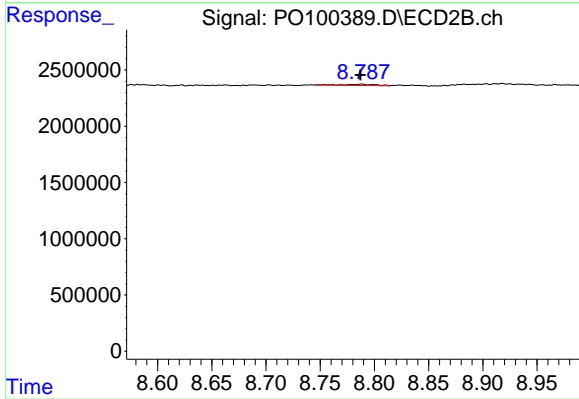
#1 Tetrachloro-m-xylene

R.T.: 3.699 min  
 Delta R.T.: 0.000 min  
 Response: 157842  
 Conc: 0.07 ng/ml



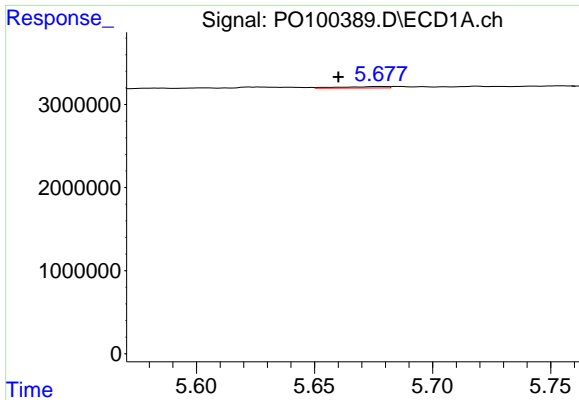
#2 Decachlorobiphenyl

R.T.: 10.347 min  
 Delta R.T.: 0.000 min  
 Response: 106335  
 Conc: 0.08 ng/ml



#2 Decachlorobiphenyl

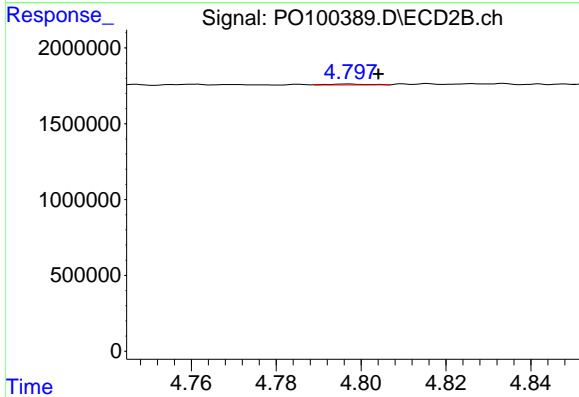
R.T.: 8.788 min  
 Delta R.T.: 0.001 min  
 Response: 208907  
 Conc: 0.13 ng/ml



#3 AR-1016-1

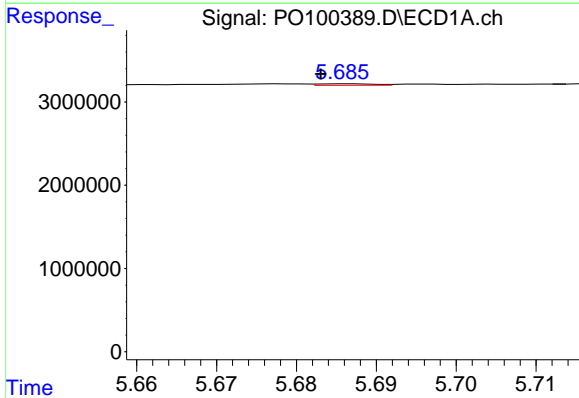
R.T.: 5.678 min  
 Delta R.T.: 0.018 min  
 Response: 237847  
 Conc: 3.55 ng/ml

Instrument :  
 ECD\_O  
 ClientSampleId :



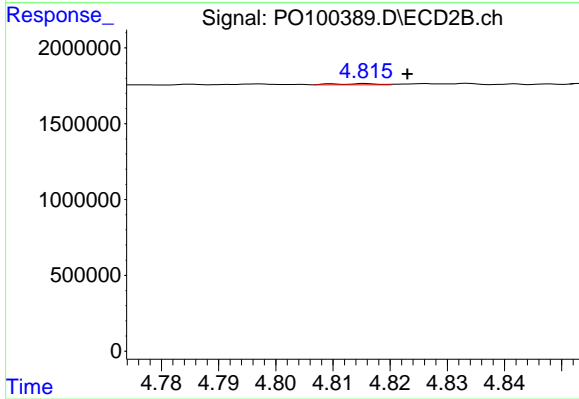
#3 AR-1016-1

R.T.: 4.797 min  
 Delta R.T.: -0.007 min  
 Response: 41817  
 Conc: 0.95 ng/ml



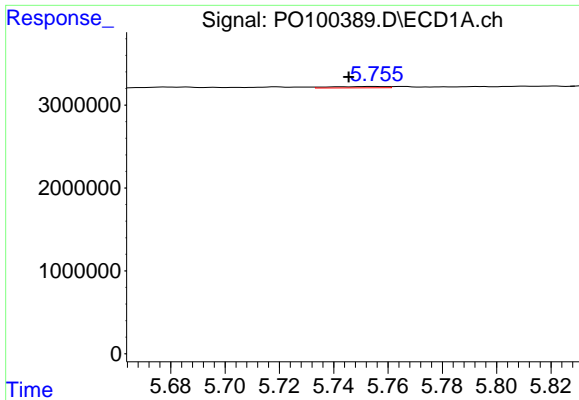
#4 AR-1016-2

R.T.: 5.686 min  
 Delta R.T.: 0.003 min  
 Response: 87577  
 Conc: 0.87 ng/ml



#4 AR-1016-2

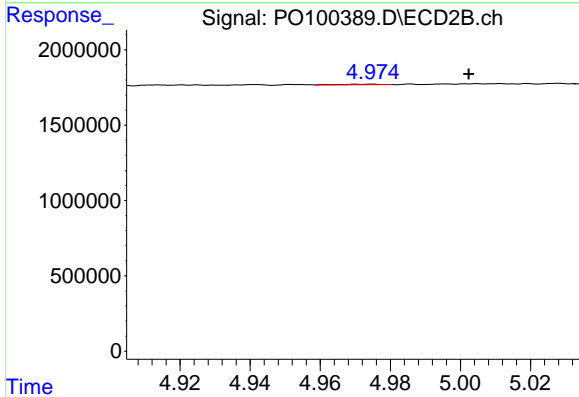
R.T.: 4.816 min  
 Delta R.T.: -0.007 min  
 Response: 41524  
 Conc: 0.69 ng/ml



#5 AR-1016-3

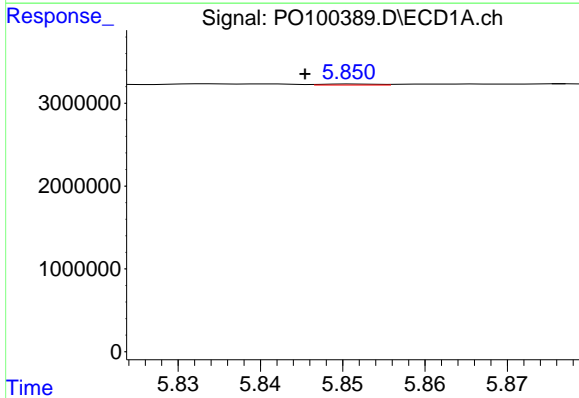
R.T.: 5.755 min  
 Delta R.T.: 0.009 min  
 Response: 227739  
 Conc: 3.54 ng/ml

Instrument :  
 ECD\_O  
 ClientSampleId :



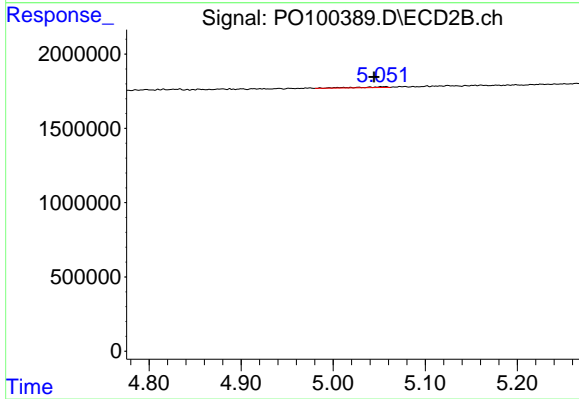
#5 AR-1016-3

R.T.: 4.975 min  
 Delta R.T.: -0.028 min  
 Response: 36929  
 Conc: 1.14 ng/ml



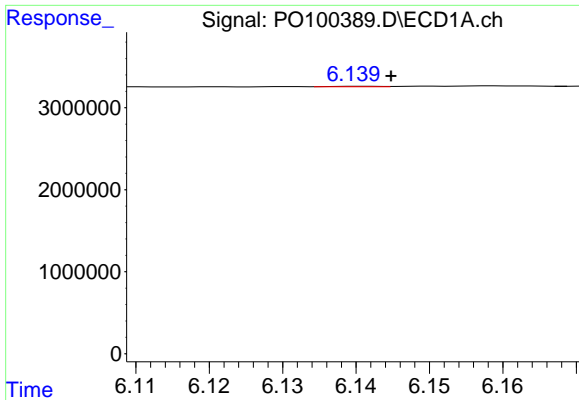
#6 AR-1016-4

R.T.: 5.851 min  
 Delta R.T.: 0.006 min  
 Response: 53789  
 Conc: 1.05 ng/ml



#6 AR-1016-4

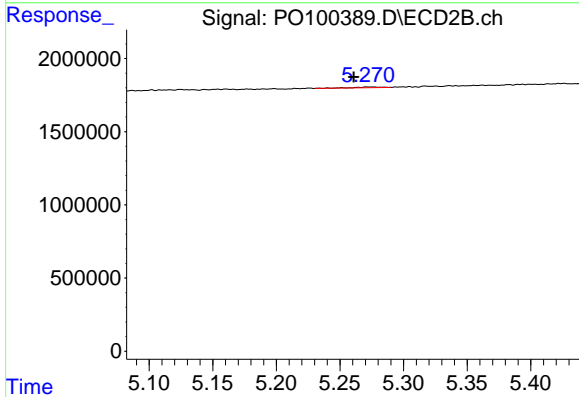
R.T.: 5.057 min  
 Delta R.T.: 0.012 min  
 Response: 128752  
 Conc: 4.59 ng/ml



#7 AR-1016-5

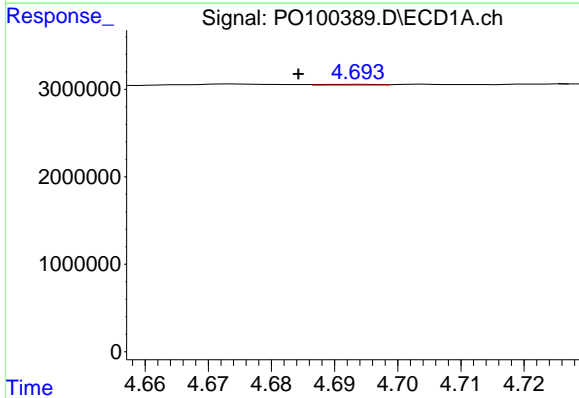
R.T.: 6.141 min  
 Delta R.T.: -0.004 min  
 Response: 29555  
 Conc: 0.55 ng/ml

Instrument :  
 ECD\_O  
 ClientSampleId :



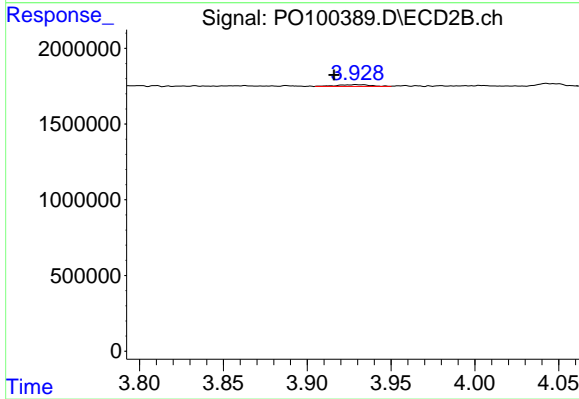
#7 AR-1016-5

R.T.: 5.276 min  
 Delta R.T.: 0.015 min  
 Response: 69537  
 Conc: 1.98 ng/ml



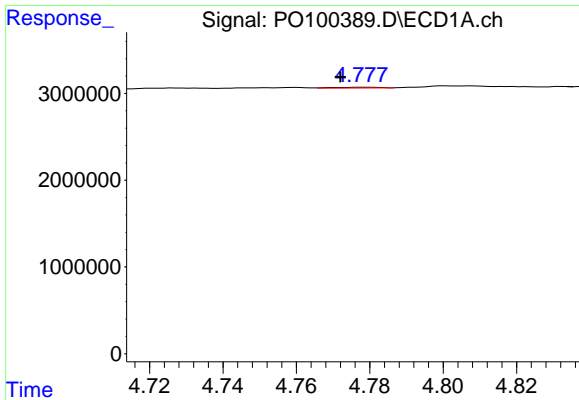
#8 AR-1221-1

R.T.: 4.694 min  
 Delta R.T.: 0.009 min  
 Response: 50733  
 Conc: 1.89 ng/ml



#8 AR-1221-1

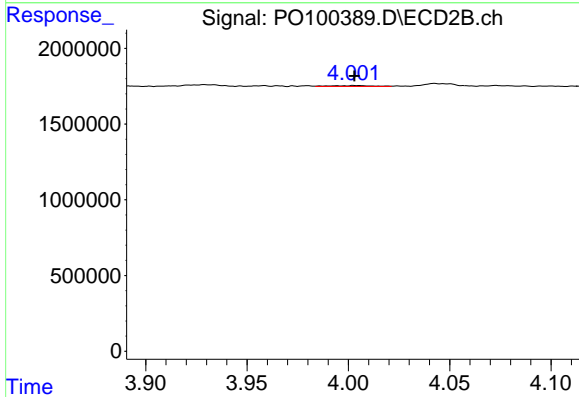
R.T.: 3.929 min  
 Delta R.T.: 0.013 min  
 Response: 161355  
 Conc: 6.72 ng/ml



#9 AR-1221-2

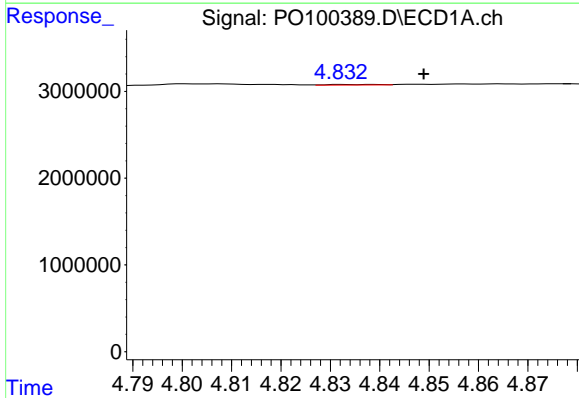
R.T.: 4.778 min  
 Delta R.T.: 0.006 min  
 Response: 70915  
 Conc: 3.56 ng/ml

Instrument :  
 ECD\_O  
 ClientSampleId :



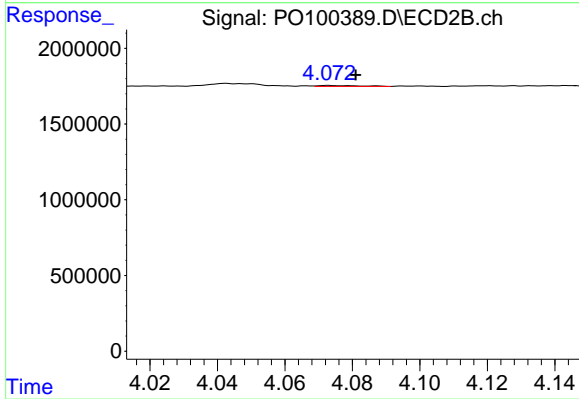
#9 AR-1221-2

R.T.: 4.004 min  
 Delta R.T.: 0.000 min  
 Response: 83297  
 Conc: 4.69 ng/ml



#10 AR-1221-3

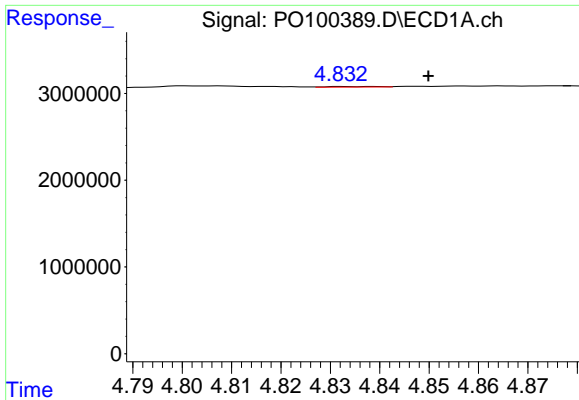
R.T.: 4.839 min  
 Delta R.T.: -0.010 min  
 Response: 45996  
 Conc: 0.74 ng/ml



#10 AR-1221-3

R.T.: 4.073 min  
 Delta R.T.: -0.008 min  
 Response: 51780  
 Conc: 1.06 ng/ml

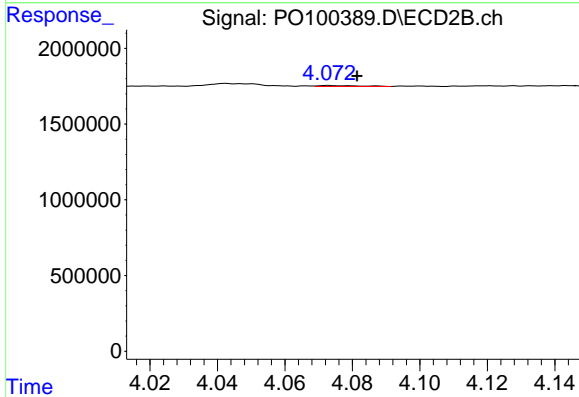




#11 AR-1232-1

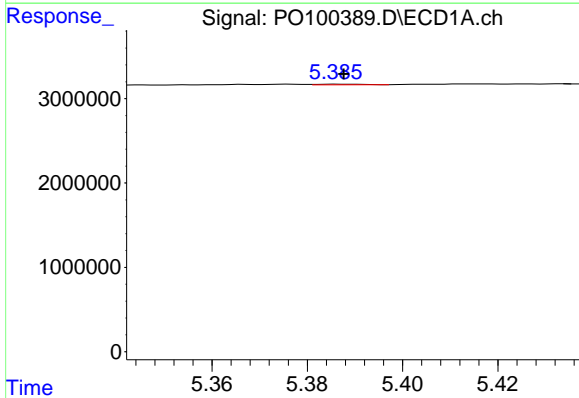
R.T.: 4.839 min  
 Delta R.T.: -0.011 min  
 Response: 45996  
 Conc: 0.96 ng/ml

Instrument :  
 ECD\_O  
 ClientSampleId :



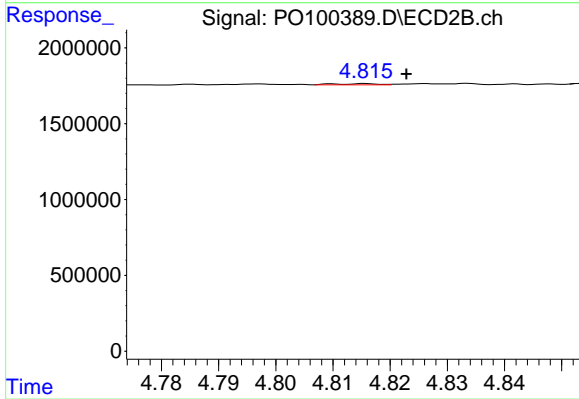
#11 AR-1232-1

R.T.: 4.073 min  
 Delta R.T.: -0.008 min  
 Response: 51780  
 Conc: 1.34 ng/ml



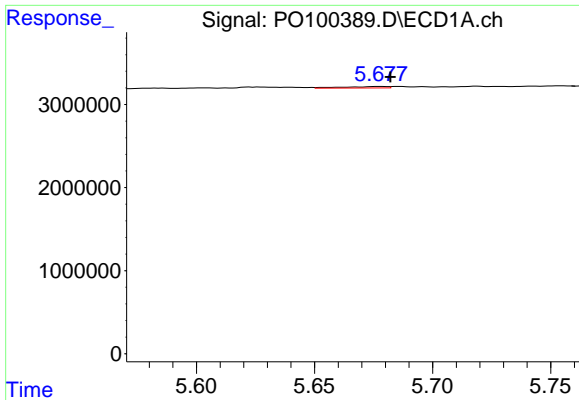
#12 AR-1232-2

R.T.: 5.387 min  
 Delta R.T.: 0.000 min  
 Response: 53693  
 Conc: 2.02 ng/ml



#12 AR-1232-2

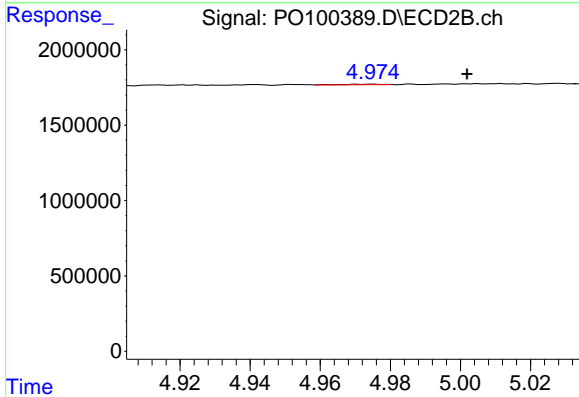
R.T.: 4.816 min  
 Delta R.T.: -0.007 min  
 Response: 41524  
 Conc: 1.54 ng/ml



#13 AR-1232-3

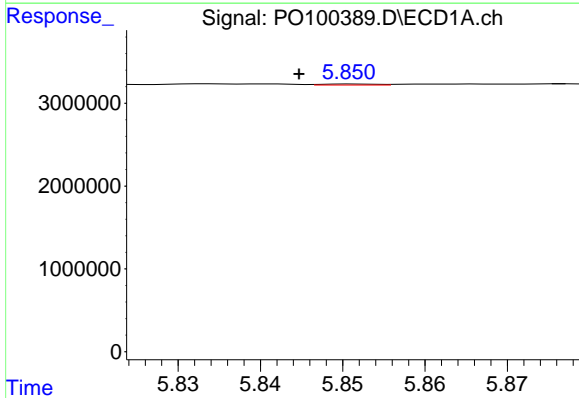
R.T.: 5.678 min  
 Delta R.T.: -0.004 min  
 Response: 237847  
 Conc: 5.42 ng/ml

Instrument :  
 ECD\_O  
 ClientSampleId :



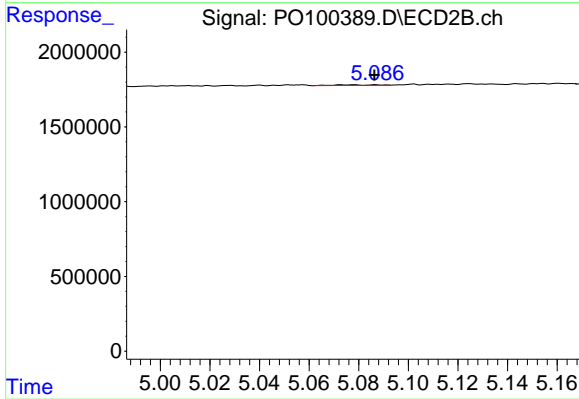
#13 AR-1232-3

R.T.: 4.975 min  
 Delta R.T.: -0.027 min  
 Response: 36929  
 Conc: 2.58 ng/ml



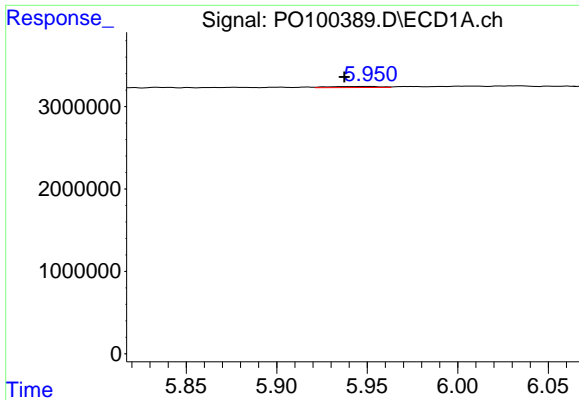
#14 AR-1232-4

R.T.: 5.851 min  
 Delta R.T.: 0.007 min  
 Response: 53789  
 Conc: 2.47 ng/ml



#14 AR-1232-4

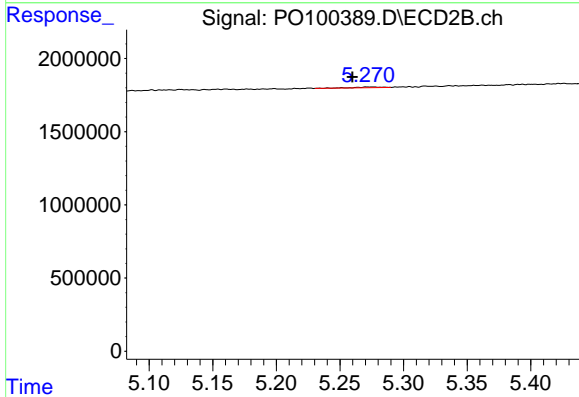
R.T.: 5.078 min  
 Delta R.T.: -0.008 min  
 Response: 53731  
 Conc: 3.83 ng/ml



#15 AR-1232-5

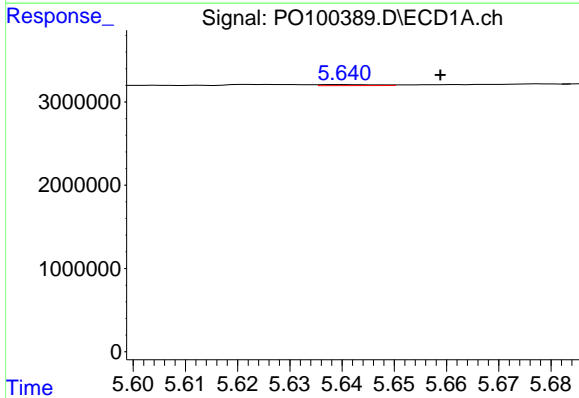
R.T.: 5.950 min  
 Delta R.T.: 0.013 min  
 Response: 275521  
 Conc: 14.40 ng/ml

Instrument :  
 ECD\_O  
 ClientSampleId :



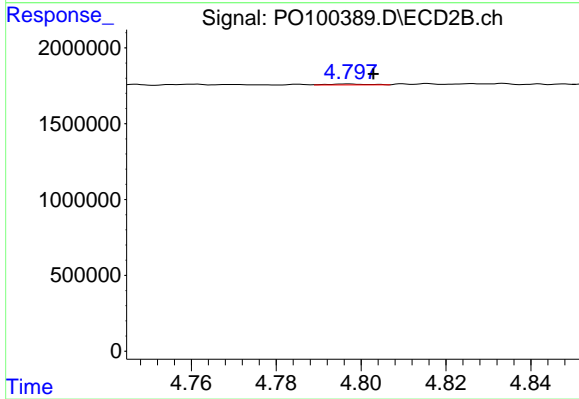
#15 AR-1232-5

R.T.: 5.276 min  
 Delta R.T.: 0.016 min  
 Response: 69537  
 Conc: 4.82 ng/ml



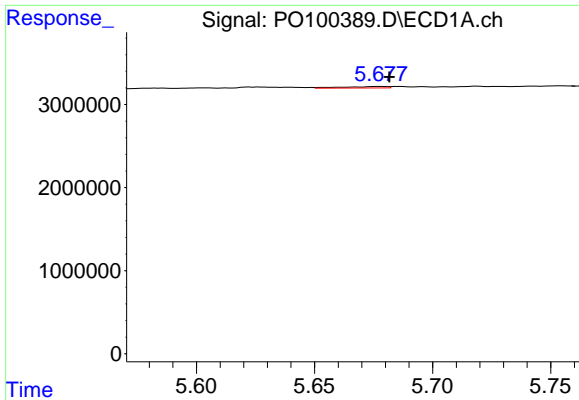
#16 AR-1242-1

R.T.: 5.640 min  
 Delta R.T.: -0.019 min  
 Response: 97583  
 Conc: 1.87 ng/ml



#16 AR-1242-1

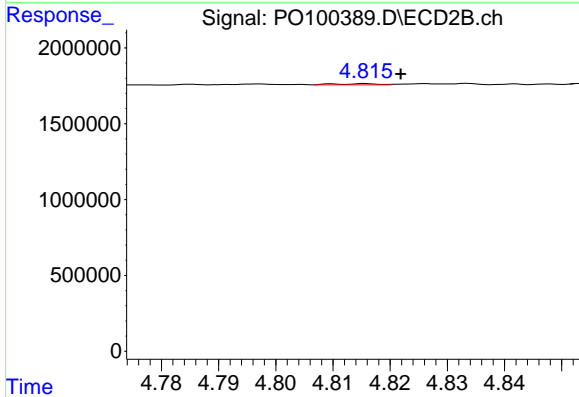
R.T.: 4.797 min  
 Delta R.T.: -0.006 min  
 Response: 41817  
 Conc: 1.20 ng/ml



#17 AR-1242-2

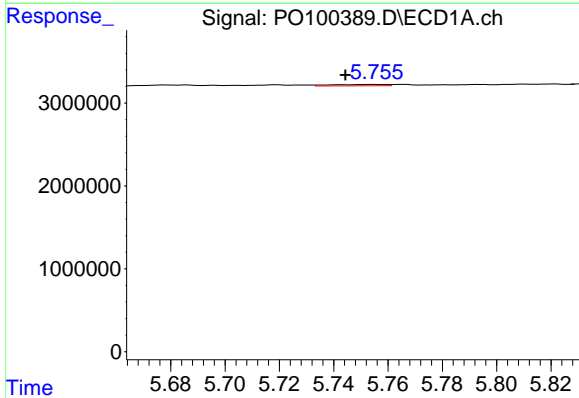
R.T.: 5.678 min  
 Delta R.T.: -0.004 min  
 Response: 237847  
 Conc: 3.06 ng/ml

Instrument :  
 ECD\_O  
 ClientSampleId :



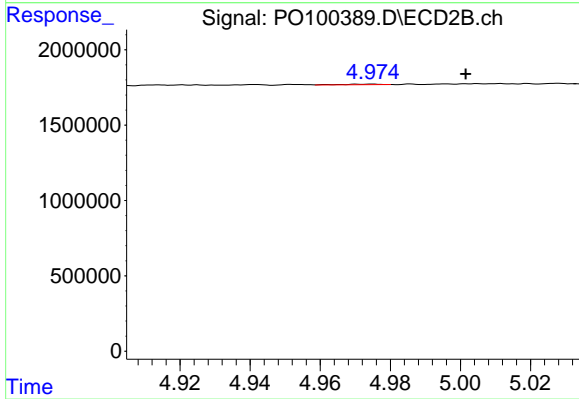
#17 AR-1242-2

R.T.: 4.816 min  
 Delta R.T.: -0.006 min  
 Response: 41524  
 Conc: 0.88 ng/ml



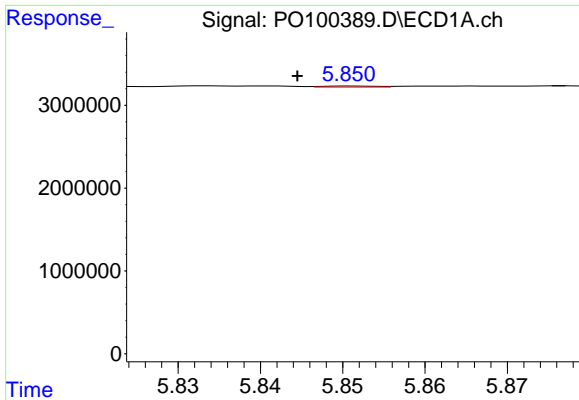
#18 AR-1242-3

R.T.: 5.755 min  
 Delta R.T.: 0.010 min  
 Response: 227739  
 Conc: 4.54 ng/ml



#18 AR-1242-3

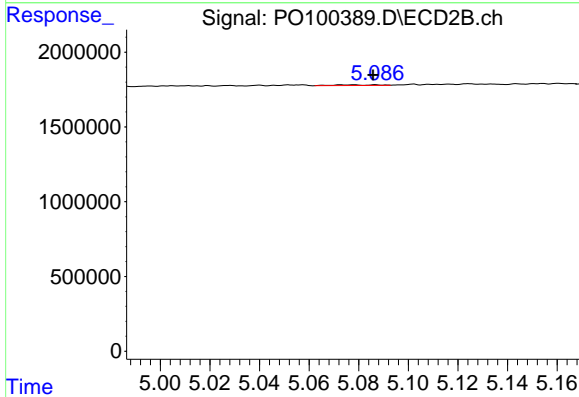
R.T.: 4.975 min  
 Delta R.T.: -0.027 min  
 Response: 36929  
 Conc: 1.47 ng/ml



#19 AR-1242-4

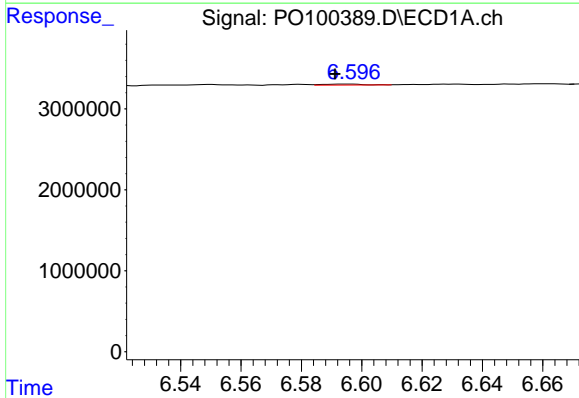
R.T.: 5.851 min  
 Delta R.T.: 0.007 min  
 Response: 53789  
 Conc: 1.36 ng/ml

Instrument :  
 ECD\_O  
 ClientSampleId :



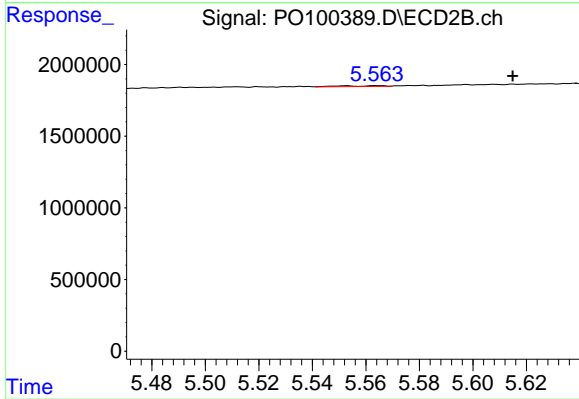
#19 AR-1242-4

R.T.: 5.078 min  
 Delta R.T.: -0.008 min  
 Response: 53731  
 Conc: 1.97 ng/ml



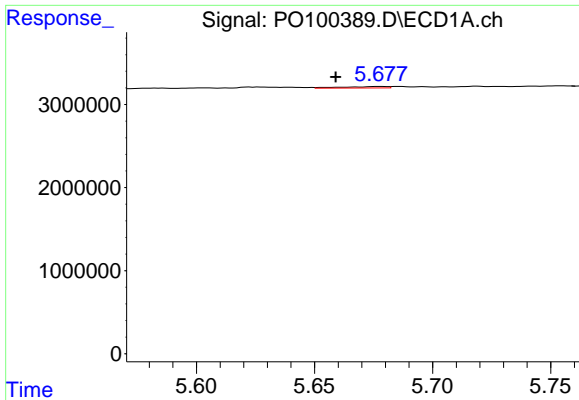
#20 AR-1242-5

R.T.: 6.596 min  
 Delta R.T.: 0.005 min  
 Response: 101688  
 Conc: 2.91 ng/ml



#20 AR-1242-5

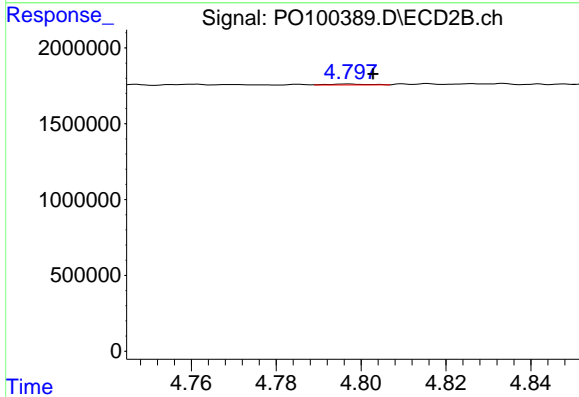
R.T.: 5.564 min  
 Delta R.T.: -0.051 min  
 Response: 63388  
 Conc: 2.02 ng/ml



#21 AR-1248-1

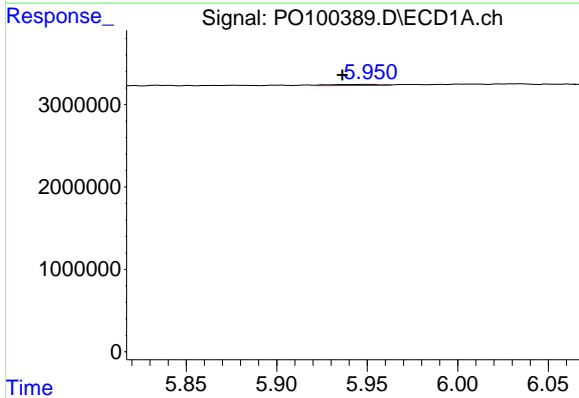
R.T.: 5.678 min  
 Delta R.T.: 0.019 min  
 Response: 237847  
 Conc: 6.07 ng/ml

Instrument :  
 ECD\_O  
 ClientSampleId :



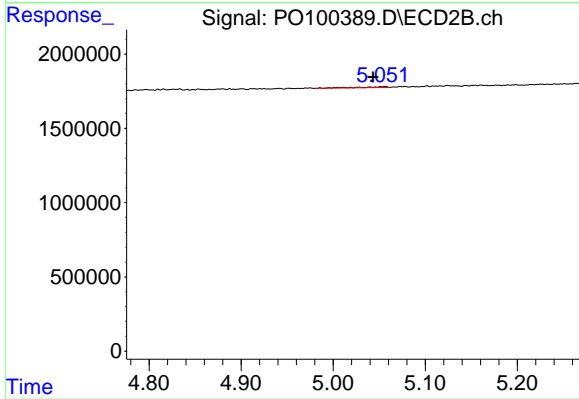
#21 AR-1248-1

R.T.: 4.797 min  
 Delta R.T.: -0.006 min  
 Response: 41817  
 Conc: 1.53 ng/ml



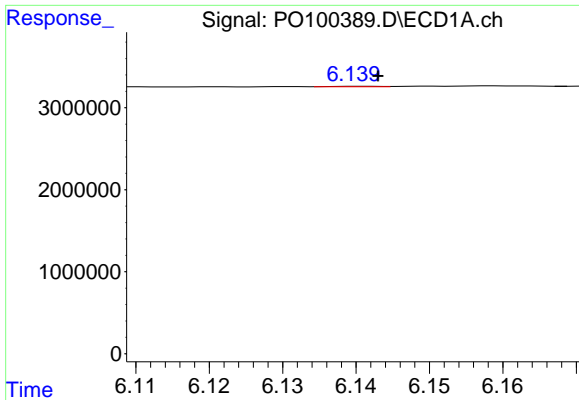
#22 AR-1248-2

R.T.: 5.950 min  
 Delta R.T.: 0.014 min  
 Response: 275521  
 Conc: 4.16 ng/ml



#22 AR-1248-2

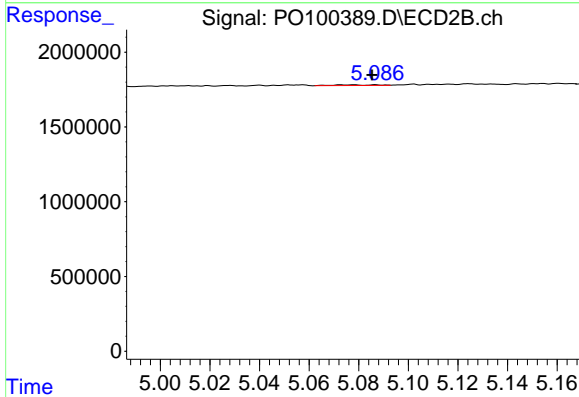
R.T.: 5.057 min  
 Delta R.T.: 0.013 min  
 Response: 128752  
 Conc: 3.27 ng/ml



#23 AR-1248-3

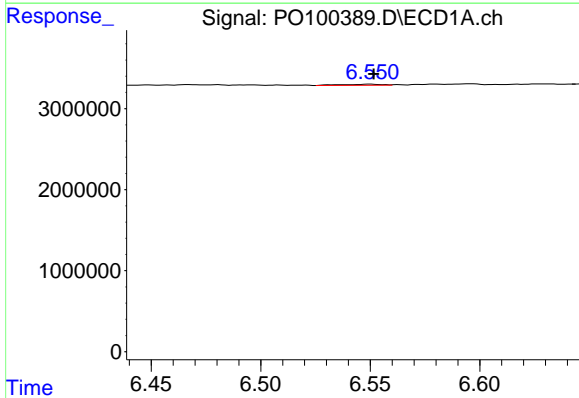
R.T.: 6.141 min  
 Delta R.T.: -0.002 min  
 Response: 29555  
 Conc: 0.41 ng/ml

Instrument :  
 ECD\_O  
 ClientSampleId :



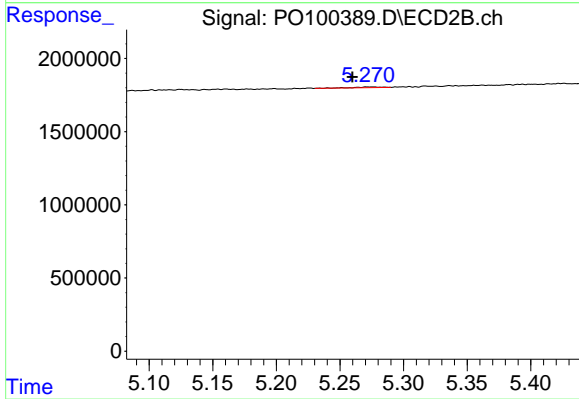
#23 AR-1248-3

R.T.: 5.078 min  
 Delta R.T.: -0.007 min  
 Response: 53731  
 Conc: 1.29 ng/ml



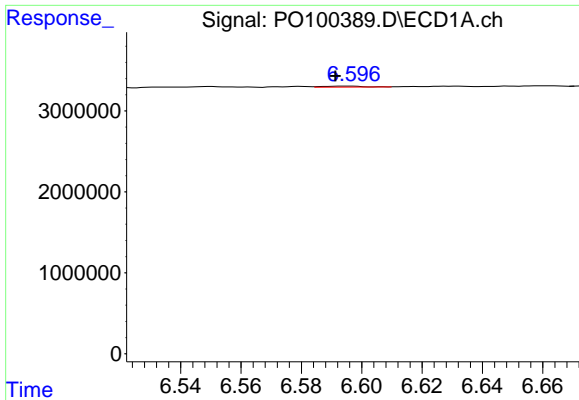
#24 AR-1248-4

R.T.: 6.550 min  
 Delta R.T.: -0.002 min  
 Response: 167598  
 Conc: 2.66 ng/ml



#24 AR-1248-4

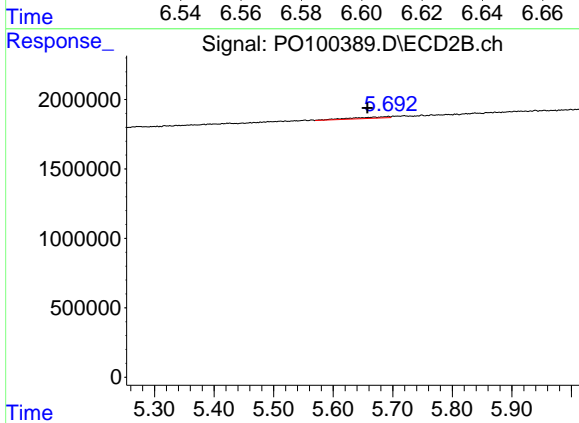
R.T.: 5.276 min  
 Delta R.T.: 0.016 min  
 Response: 69537  
 Conc: 1.43 ng/ml



#25 AR-1248-5

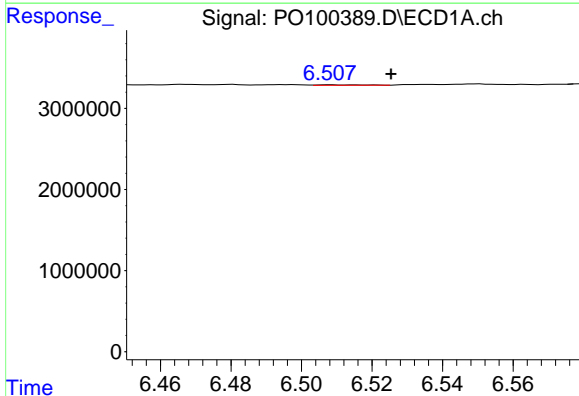
R.T.: 6.596 min  
 Delta R.T.: 0.005 min  
 Response: 101688  
 Conc: 1.66 ng/ml

Instrument :  
 ECD\_O  
 ClientSampleId :



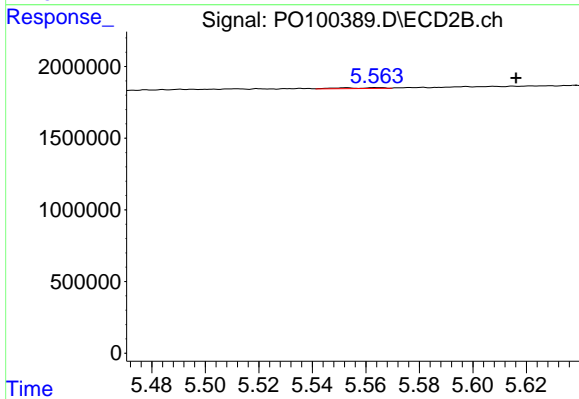
#25 AR-1248-5

R.T.: 5.693 min  
 Delta R.T.: 0.035 min  
 Response: 437658  
 Conc: 10.26 ng/ml



#26 AR-1254-1

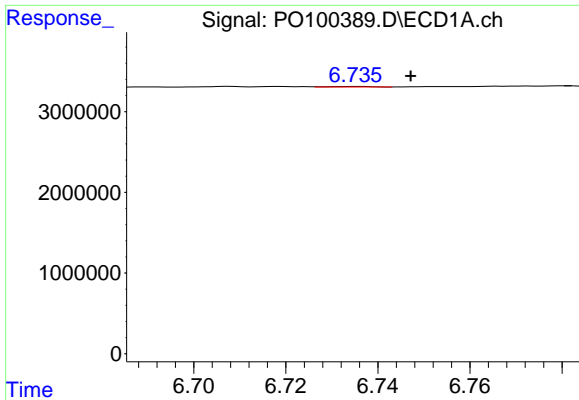
R.T.: 6.508 min  
 Delta R.T.: -0.017 min  
 Response: 62637  
 Conc: 0.74 ng/ml



#26 AR-1254-1

R.T.: 5.564 min  
 Delta R.T.: -0.052 min  
 Response: 63388  
 Conc: 0.81 ng/ml

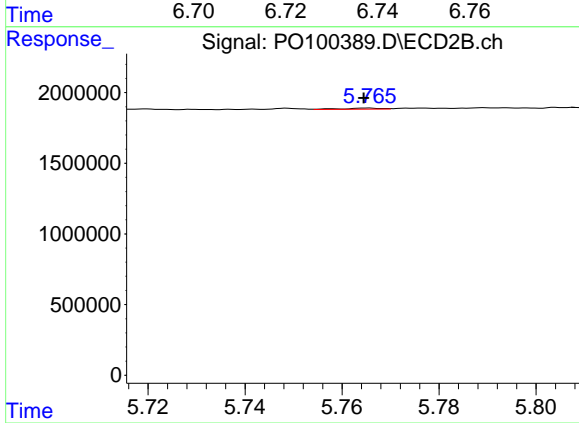




#27 AR-1254-2

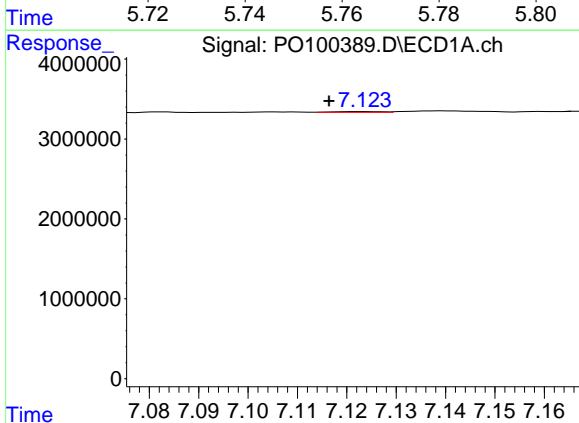
R.T.: 6.736 min  
 Delta R.T.: -0.011 min  
 Response: 41660  
 Conc: 0.34 ng/ml

Instrument :  
 ECD\_O  
 ClientSampleId :



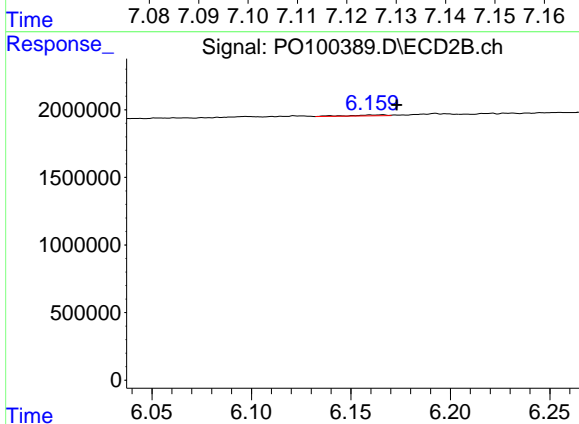
#27 AR-1254-2

R.T.: 5.765 min  
 Delta R.T.: 0.000 min  
 Response: 45301  
 Conc: 0.64 ng/ml



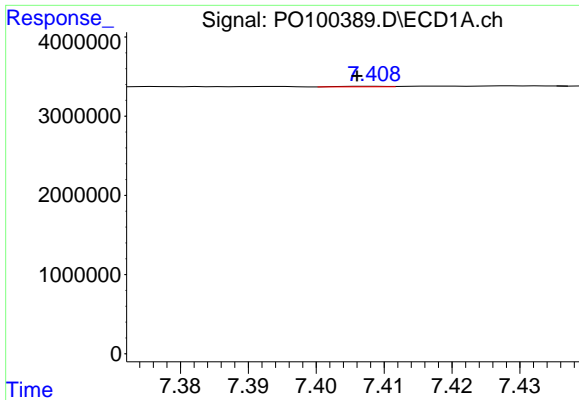
#28 AR-1254-3

R.T.: 7.123 min  
 Delta R.T.: 0.007 min  
 Response: 67013  
 Conc: 0.56 ng/ml



#28 AR-1254-3

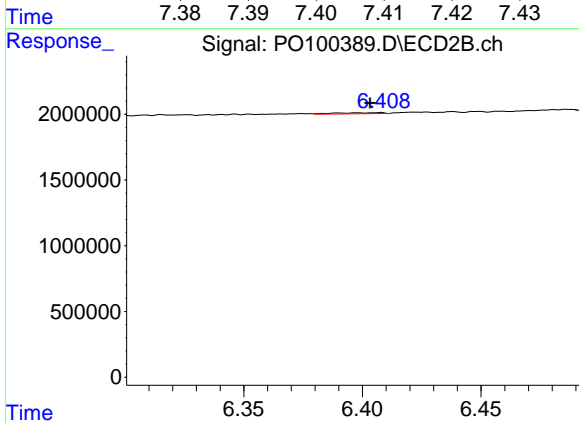
R.T.: 6.166 min  
 Delta R.T.: -0.007 min  
 Response: 93040  
 Conc: 0.77 ng/ml



#29 AR-1254-4

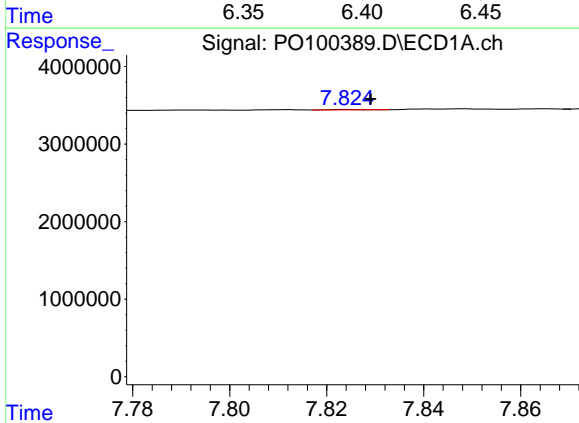
R.T.: 7.408 min  
 Delta R.T.: 0.002 min  
 Response: 35234  
 Conc: 0.51 ng/ml

Instrument :  
 ECD\_O  
 ClientSampleId :



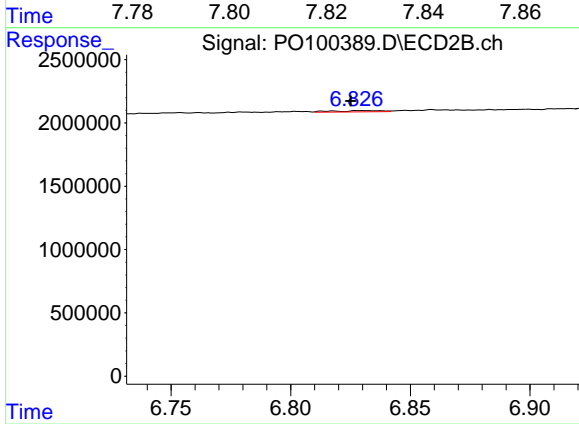
#29 AR-1254-4

R.T.: 6.407 min  
 Delta R.T.: 0.004 min  
 Response: 107139  
 Conc: 1.63 ng/ml



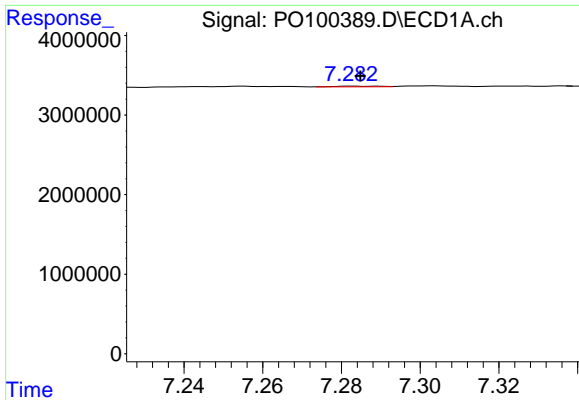
#30 AR-1254-5

R.T.: 7.824 min  
 Delta R.T.: -0.005 min  
 Response: 27735  
 Conc: 0.34 ng/ml



#30 AR-1254-5

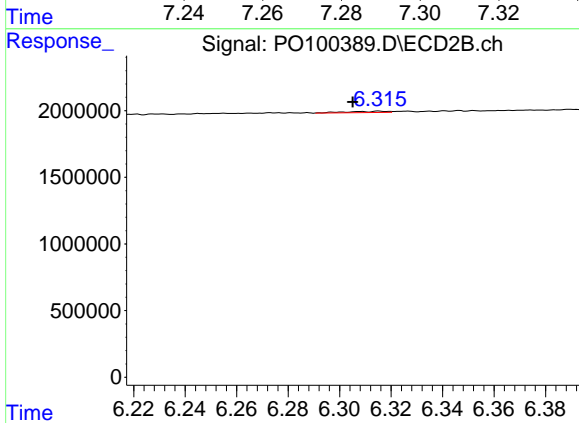
R.T.: 6.829 min  
 Delta R.T.: 0.004 min  
 Response: 134570  
 Conc: 1.22 ng/ml



#31 AR-1260-1

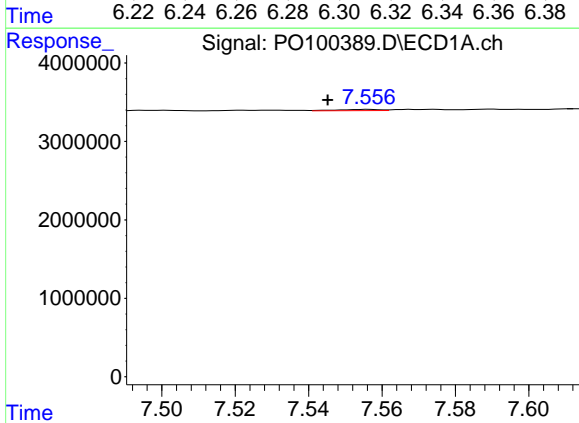
R.T.: 7.283 min  
 Delta R.T.: -0.002 min  
 Response: 72813  
 Conc: 0.75 ng/ml

Instrument :  
 ECD\_O  
 ClientSampleId :



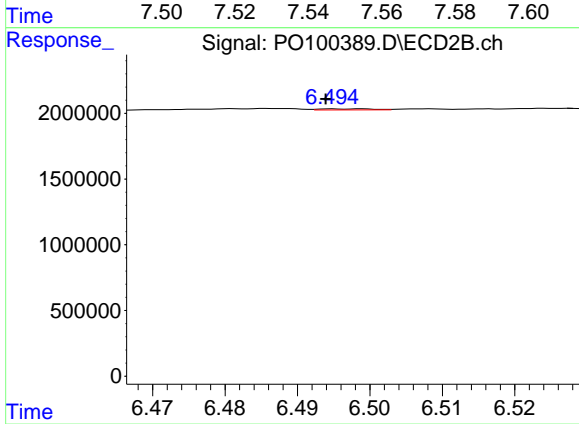
#31 AR-1260-1

R.T.: 6.315 min  
 Delta R.T.: 0.010 min  
 Response: 103489  
 Conc: 1.18 ng/ml



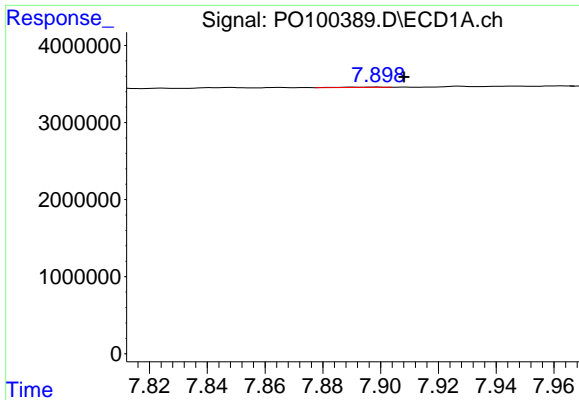
#32 AR-1260-2

R.T.: 7.556 min  
 Delta R.T.: 0.011 min  
 Response: 124335  
 Conc: 1.26 ng/ml



#32 AR-1260-2

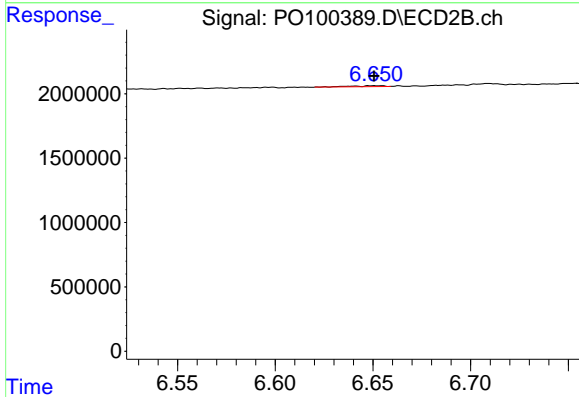
R.T.: 6.498 min  
 Delta R.T.: 0.004 min  
 Response: 42246  
 Conc: 0.41 ng/ml



#33 AR-1260-3

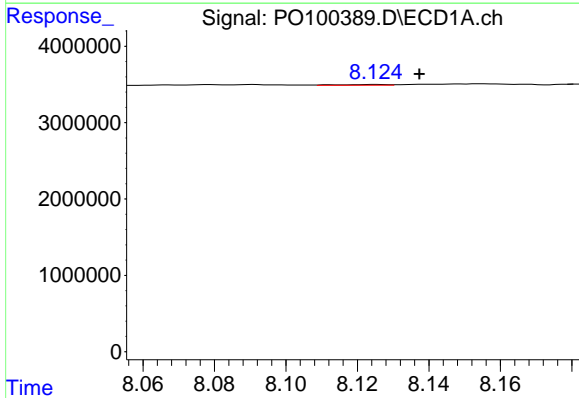
R.T.: 7.898 min  
 Delta R.T.: -0.010 min  
 Response: 47790  
 Conc: 0.61 ng/ml

Instrument :  
 ECD\_O  
 ClientSampleId :



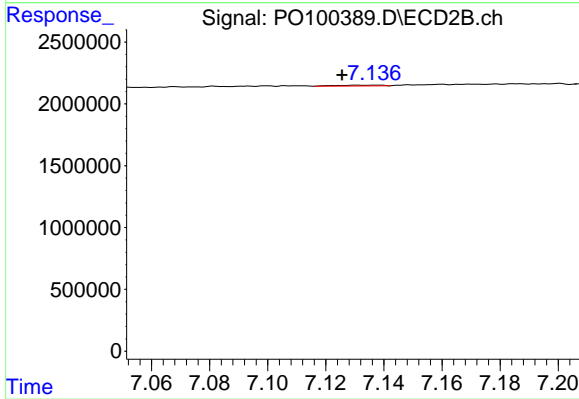
#33 AR-1260-3

R.T.: 6.650 min  
 Delta R.T.: 0.000 min  
 Response: 88796  
 Conc: 0.89 ng/ml



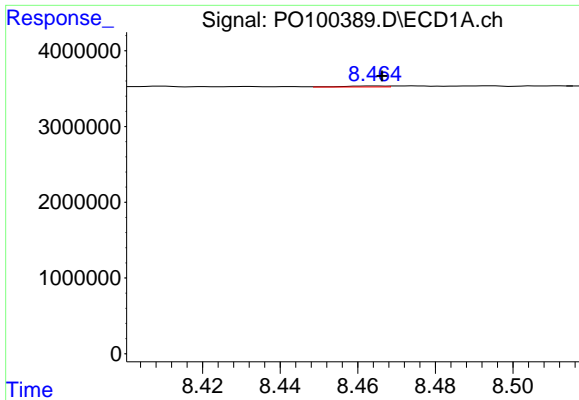
#34 AR-1260-4

R.T.: 8.125 min  
 Delta R.T.: -0.012 min  
 Response: 102411  
 Conc: 1.22 ng/ml



#34 AR-1260-4

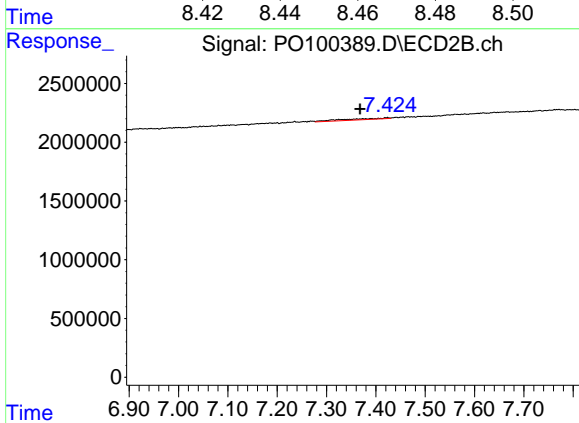
R.T.: 7.138 min  
 Delta R.T.: 0.012 min  
 Response: 68616  
 Conc: 0.79 ng/ml



#35 AR-1260-5

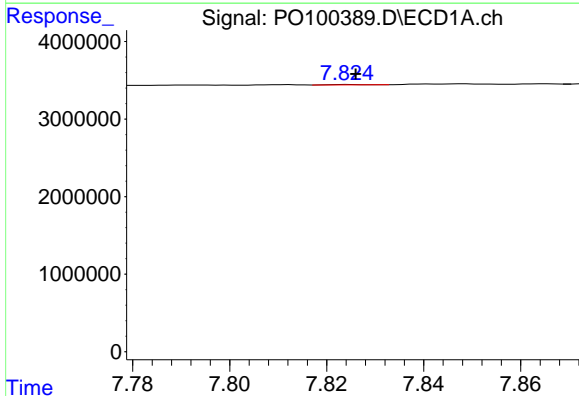
R.T.: 8.464 min  
 Delta R.T.: -0.002 min  
 Response: 113820  
 Conc: 0.82 ng/ml

Instrument :  
 ECD\_O  
 ClientSampleId :



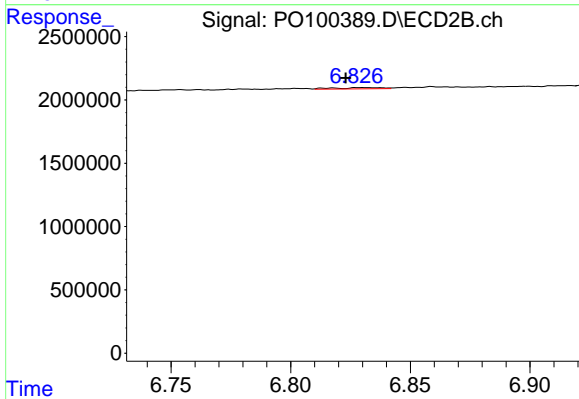
#35 AR-1260-5

R.T.: 7.423 min  
 Delta R.T.: 0.056 min  
 Response: 636990  
 Conc: 3.46 ng/ml



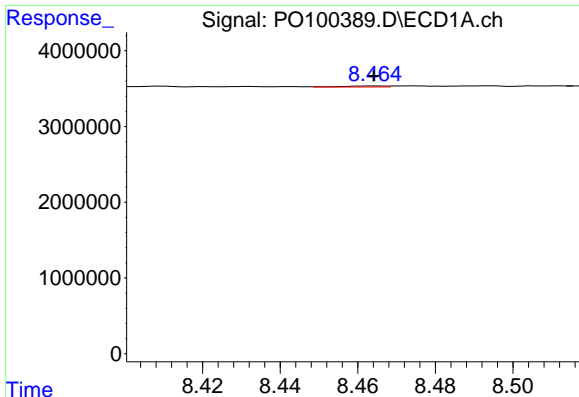
#36 AR-1262-1

R.T.: 7.824 min  
 Delta R.T.: -0.002 min  
 Response: 27735  
 Conc: 0.41 ng/ml



#36 AR-1262-1

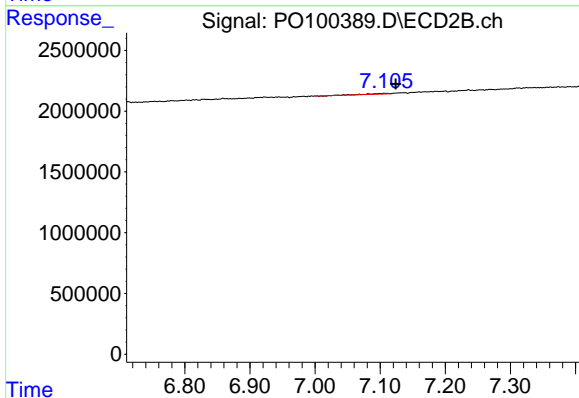
R.T.: 6.829 min  
 Delta R.T.: 0.006 min  
 Response: 134570  
 Conc: 2.33 ng/ml



#37 AR-1262-2

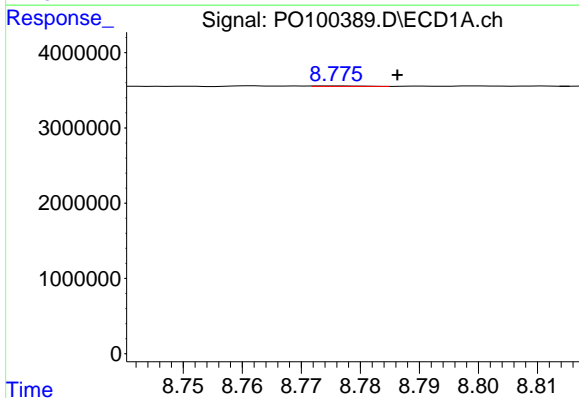
R.T.: 8.464 min  
 Delta R.T.: 0.000 min  
 Response: 113820  
 Conc: 0.71 ng/ml

Instrument :  
 ECD\_O  
 ClientSampleId :



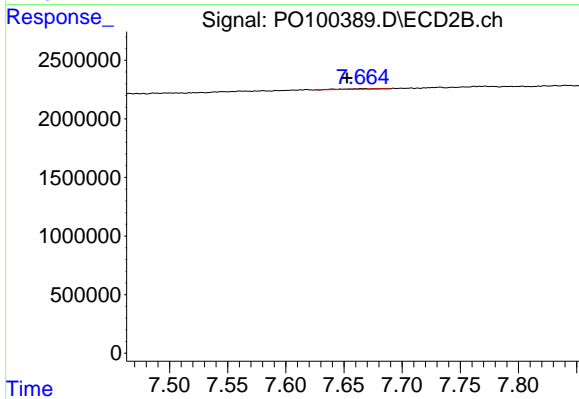
#37 AR-1262-2

R.T.: 7.111 min  
 Delta R.T.: -0.013 min  
 Response: 101300  
 Conc: 0.89 ng/ml



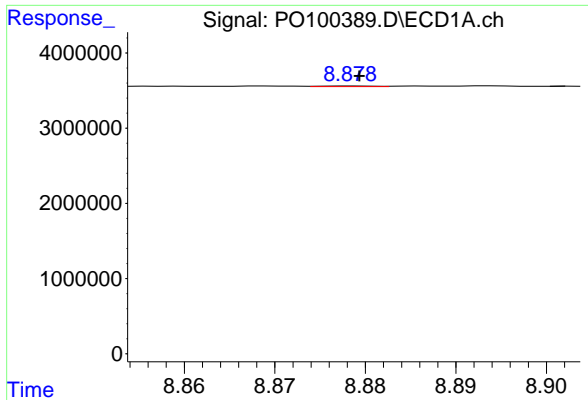
#38 AR-1262-3

R.T.: 8.776 min  
 Delta R.T.: -0.010 min  
 Response: 32714  
 Conc: 0.29 ng/ml



#38 AR-1262-3

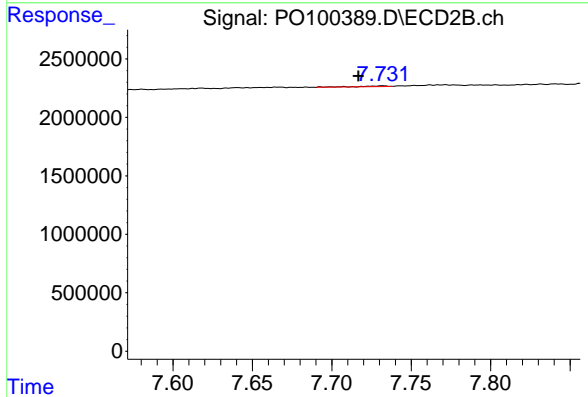
R.T.: 7.666 min  
 Delta R.T.: 0.014 min  
 Response: 106464  
 Conc: 1.34 ng/ml



#39 AR-1262-4

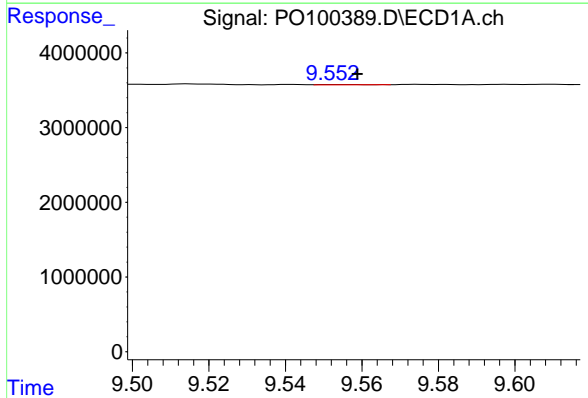
R.T.: 8.878 min  
 Delta R.T.: 0.000 min  
 Response: 29882  
 Conc: 0.33 ng/ml

Instrument :  
 ECD\_O  
 ClientSampleId :



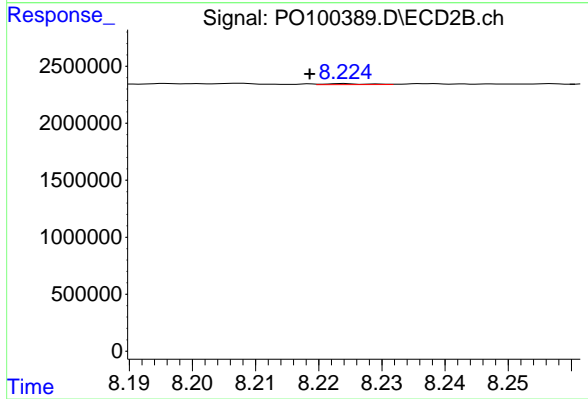
#39 AR-1262-4

R.T.: 7.732 min  
 Delta R.T.: 0.015 min  
 Response: 79020  
 Conc: 0.52 ng/ml



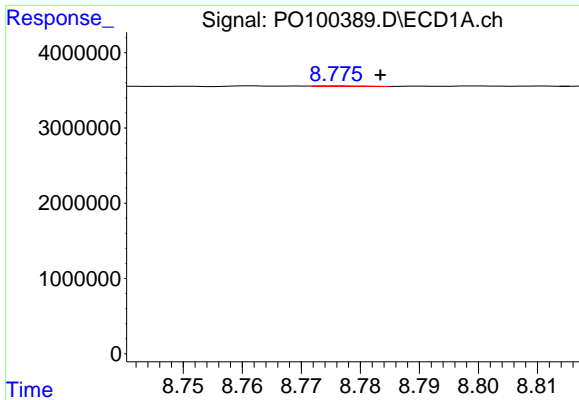
#40 AR-1262-5

R.T.: 9.552 min  
 Delta R.T.: -0.007 min  
 Response: 23247  
 Conc: 0.48 ng/ml



#40 AR-1262-5

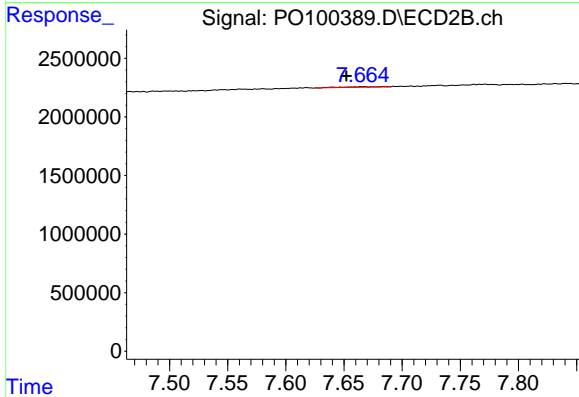
R.T.: 8.224 min  
 Delta R.T.: 0.005 min  
 Response: 40801  
 Conc: 0.67 ng/ml



#41 AR-1268-1

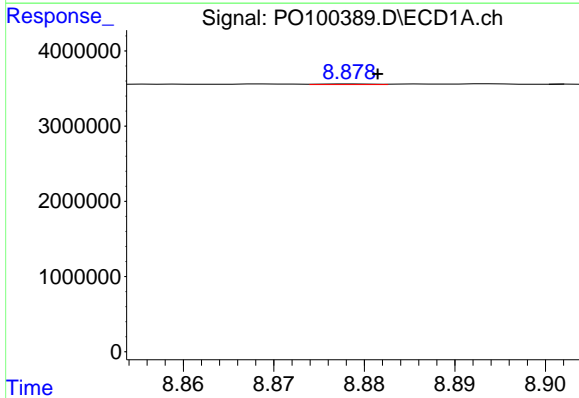
R.T.: 8.776 min  
 Delta R.T.: -0.007 min  
 Response: 32714  
 Conc: 0.15 ng/ml

Instrument :  
 ECD\_O  
 ClientSampleId :



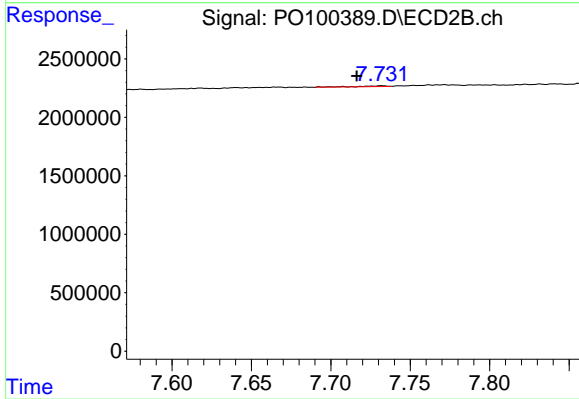
#41 AR-1268-1

R.T.: 7.666 min  
 Delta R.T.: 0.014 min  
 Response: 106464  
 Conc: 0.42 ng/ml



#42 AR-1268-2

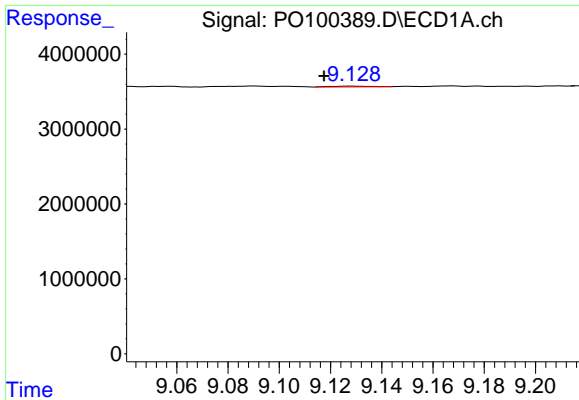
R.T.: 8.878 min  
 Delta R.T.: -0.003 min  
 Response: 29882  
 Conc: 0.16 ng/ml



#42 AR-1268-2

R.T.: 7.732 min  
 Delta R.T.: 0.016 min  
 Response: 79020  
 Conc: 0.34 ng/ml

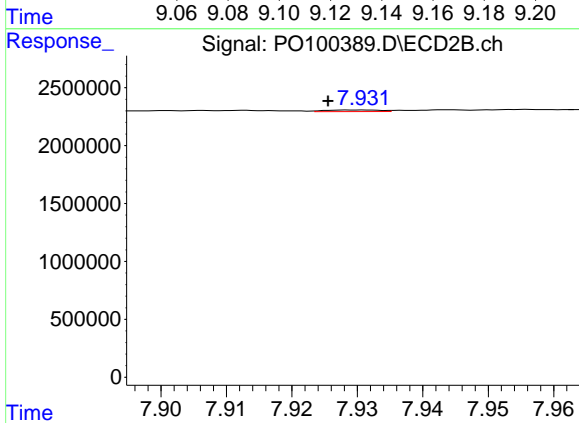




#43 AR-1268-3

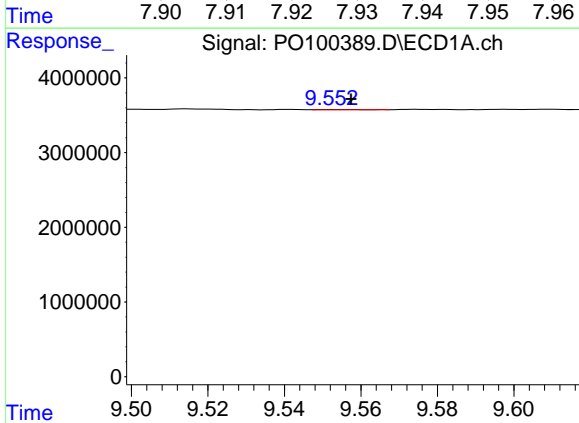
R.T.: 9.128 min  
 Delta R.T.: 0.010 min  
 Response: 126800  
 Conc: 0.70 ng/ml

Instrument :  
 ECD\_O  
 ClientSampleId :



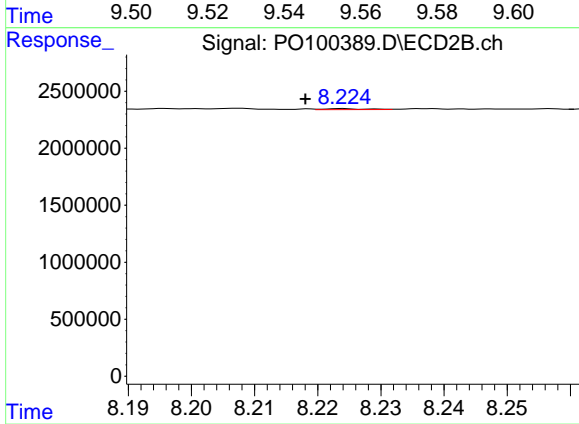
#43 AR-1268-3

R.T.: 7.930 min  
 Delta R.T.: 0.005 min  
 Response: 79103  
 Conc: 0.36 ng/ml



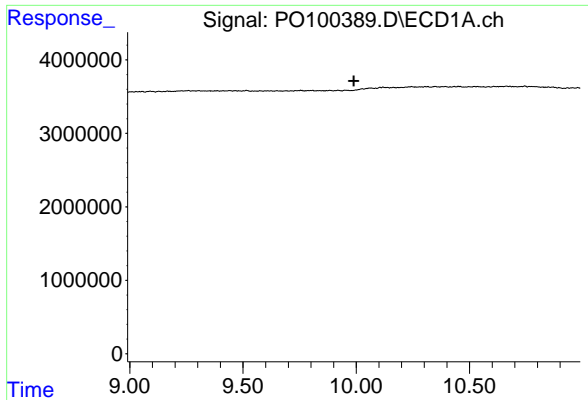
#44 AR-1268-4

R.T.: 9.552 min  
 Delta R.T.: -0.006 min  
 Response: 23247  
 Conc: 0.43 ng/ml



#44 AR-1268-4

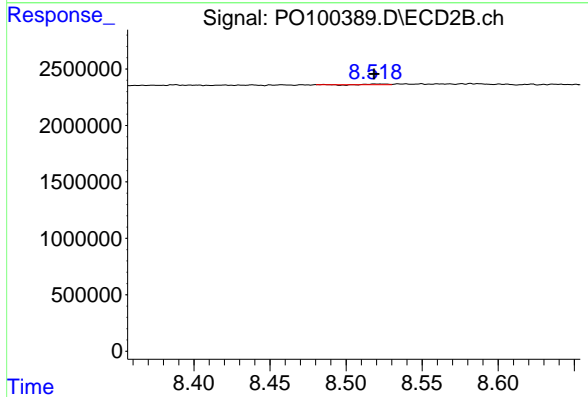
R.T.: 8.224 min  
 Delta R.T.: 0.006 min  
 Response: 40801  
 Conc: 0.60 ng/ml



#45 AR-1268-5

R.T.: 9.997 min  
 Delta R.T.: 0.008 min  
 Response: -14421  
 Conc: N.D.

Instrument :  
 ECD\_O  
 ClientSampleId :



#45 AR-1268-5

R.T.: 8.519 min  
 Delta R.T.: 0.000 min  
 Response: 20170  
 Conc: 0.03 ng/ml