

Data Path : Z:\pestpcbsrv\HPCHEM1\ECD\_0\Data\PO121318\  
 Data File : P0052493.D  
 Signal(s) : Signal #1: ECD1A.CH Signal #2: ECD2B.CH  
 Acq On : 13 Dec 2018 18:14  
 Operator : SM/SJ  
 Sample : J6319-14  
 Misc :  
 ALS Vial : 8 Sample Multiplier: 1

Instrument :  
 ECD\_0  
 ClientSampleId :  
 068\_DUP-2

Manual Integrations  
 APPROVED

Sohil  
 12/14/2018 4:08:42 PM

Integration File signal 1: autoint1.e  
 Integration File signal 2: autoint2.e  
 Quant Time: Dec 14 01:33:42 2018  
 Quant Method : Z:\pestpcbsrv\HPCHEM1\ECD\_0\methods\PO120318.M  
 Quant Title : GC EXTRACTABLES  
 QLast Update : Tue Dec 04 03:10:39 2018  
 Response via : Initial Calibration  
 Integrator: ChemStation 6890 Scale Mode: Small noise peaks clipped

Volume Inj. : 2 µl  
 Signal #1 Phase : ZB-MR1 Signal #2 Phase: ZB-MR2  
 Signal #1 Info : 30Mx0.32mmx 0.50µ Signal #2 Info : 30M x 0.32mm x 0.25µm

Compound	RT#1	RT#2	Resp#1	Resp#2	ng/ml	ng/ml
----------	------	------	--------	--------	-------	-------

-----  
 System Monitoring Compounds

1) SA Tetrachlo...	4.261	3.282	16423100	4372173	19.076	19.604
2) SA Decachlor...	9.820	7.970	6312087	2696472	12.613m	12.934

Target Compounds  
 -----

(f)=RT Delta > 1/2 Window (#)=Amounts differ by > 25% (m)=manual int.

Data Path : Z:\pestpcbsrv\HPCHEM1\ECD\_O\Data\PO121318\  
 Data File : PO052493.D  
 Signal(s) : Signal #1: ECD1A.CH Signal #2: ECD2B.CH  
 Acq On : 13 Dec 2018 18:14  
 Operator : SM/SJ  
 Sample : J6319-14  
 Misc :  
 ALS Vial : 8 Sample Multiplier: 1

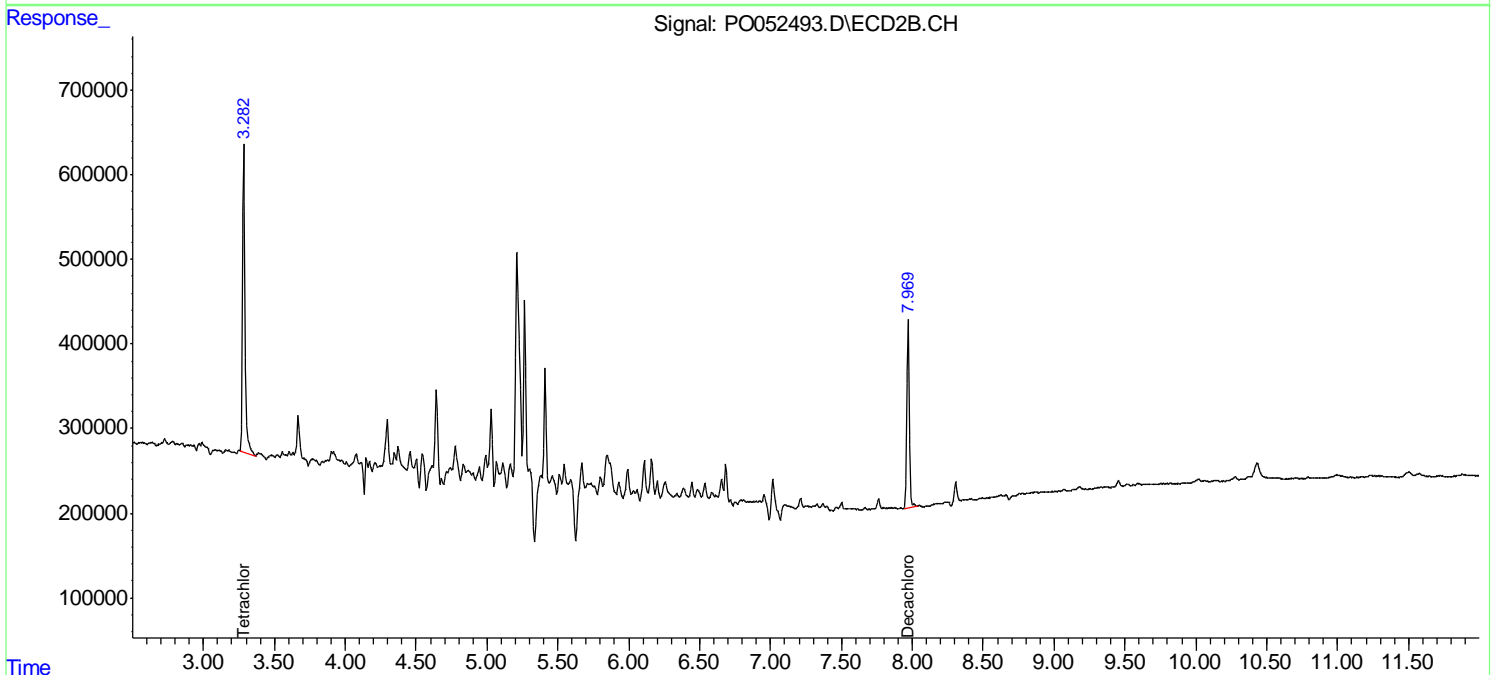
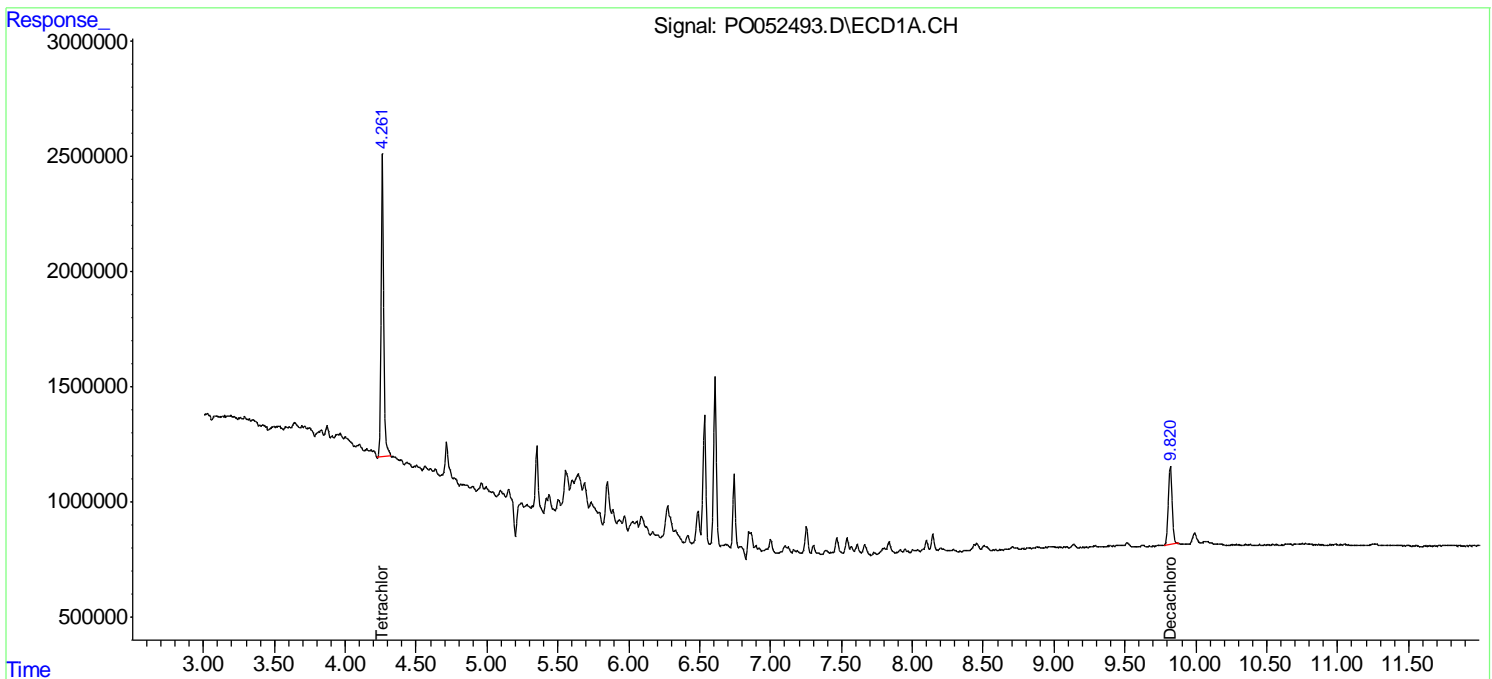
Instrument :  
 ECD\_O  
 ClientSampled :  
 068\_DUP-2

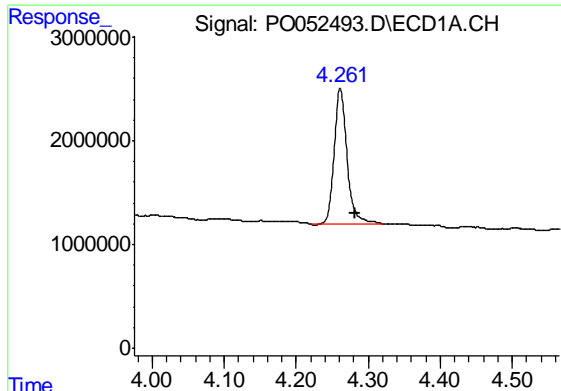
Manual Integrations  
 APPROVED

Sohil  
 12/14/2018 4:08:42 PM

Integration File signal 1: autoint1.e  
 Integration File signal 2: autoint2.e  
 Quant Time: Dec 14 01:33:42 2018  
 Quant Method : Z:\pestpcbsrv\HPCHEM1\ECD\_O\methods\PO120318.M  
 Quant Title : GC EXTRACTABLES  
 QLast Update : Tue Dec 04 03:10:39 2018  
 Response via : Initial Calibration  
 Integrator: ChemStation 6890 Scale Mode: Small noise peaks clipped

Volume Inj. : 2 µl  
 Signal #1 Phase : ZB-MR1 Signal #2 Phase: ZB-MR2  
 Signal #1 Info : 30Mx0.32mmx 0.50µ Signal #2 Info : 30M x 0.32mm x 0.25µm

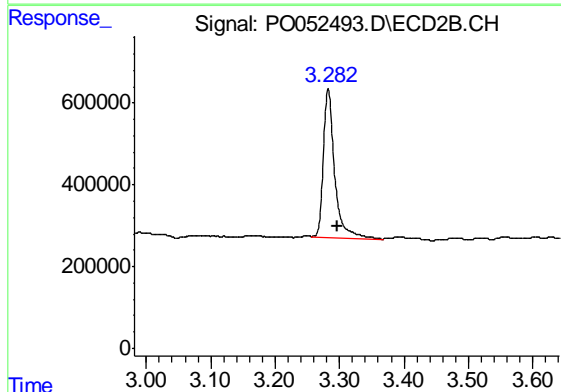




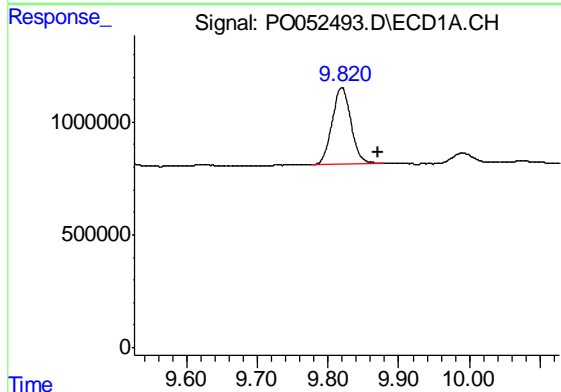
#1 Tetrachloro-m-xylene  
 R.T.: 4.261 min  
 Delta R.T.: -0.022 min  
 Response: 16423100  
 Conc: 19.08 ng/ml

Instrument :  
 ECD\_O  
 ClientSampleId :  
 068\_DUP-2

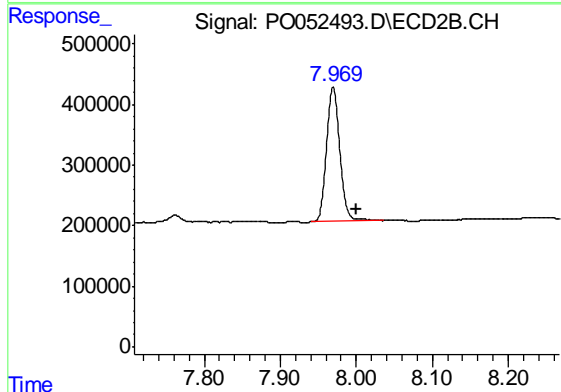
Manual Integrations  
 APPROVED  
 Sohil  
 12/14/2018 4:08:42 PM



#1 Tetrachloro-m-xylene  
 R.T.: 3.282 min  
 Delta R.T.: -0.014 min  
 Response: 4372173  
 Conc: 19.60 ng/ml



#2 Decachlorobiphenyl  
 R.T.: 9.820 min  
 Delta R.T.: -0.052 min  
 Response: 6312087  
 Conc: 12.61 ng/ml m



#2 Decachlorobiphenyl  
 R.T.: 7.970 min  
 Delta R.T.: -0.030 min  
 Response: 2696472  
 Conc: 12.93 ng/ml