

Data Path : Z:\pestpcbsrv\HPCHEM1\ECD_0\Data\PO121321\
 Data File : PO083630.D
 Signal(s) : Signal #1: ECD1A.CH Signal #2: ECD2B.CH
 Acq On : 13 Dec 2021 14:26
 Operator : AJ\MA
 Sample : M5022-29
 Misc :
 ALS Vial : 11 Sample Multiplier: 1

Instrument :
 ECD_0
 ClientSampleId :
 TP12

Integration File signal 1: autoint1.e
 Integration File signal 2: autoint2.e
 Quant Time: Dec 14 00:08:16 2021
 Quant Method : Z:\pestpcbsrv\HPCHEM1\ECD_0\methods\PO120621.M
 Quant Title : GC EXTRACTABLES
 QLast Update : Tue Dec 07 13:18:47 2021
 Response via : Initial Calibration
 Integrator: ChemStation 6890 Scale Mode: Small noise peaks clipped

Volume Inj. : 2 µl
 Signal #1 Phase : ZB-MR1 Signal #2 Phase: ZB-MR2
 Signal #1 Info : 30Mx0.32mmx 0.50µ Signal #2 Info : 30M x 0.32mm x 0.25µm

Compound	RT#1	RT#2	Resp#1	Resp#2	ng/ml	ng/ml

System Monitoring Compounds						
1) SA Tetrachlo...	4.936	3.942	1990596	648777	20.865	20.857
2) SA Decachlor...	11.012	9.240	1189360	479911	16.649	14.711

Target Compounds

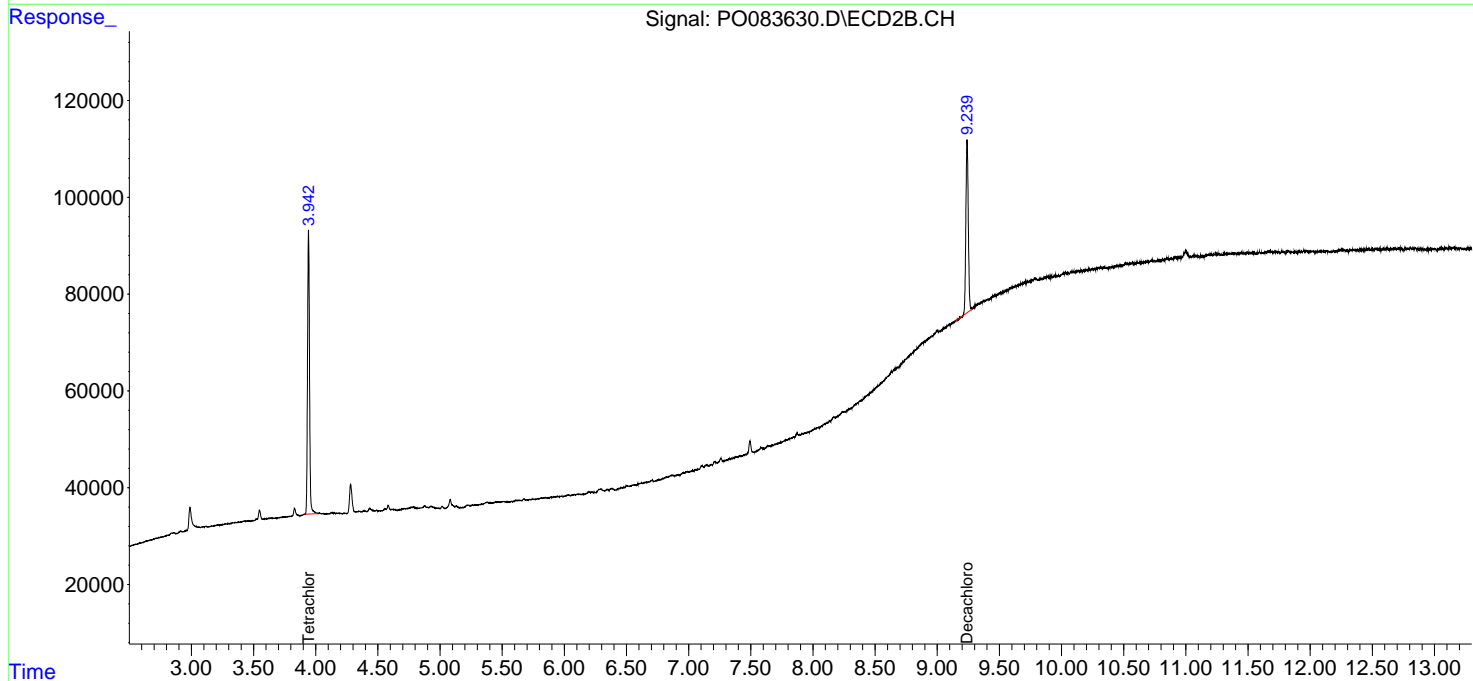
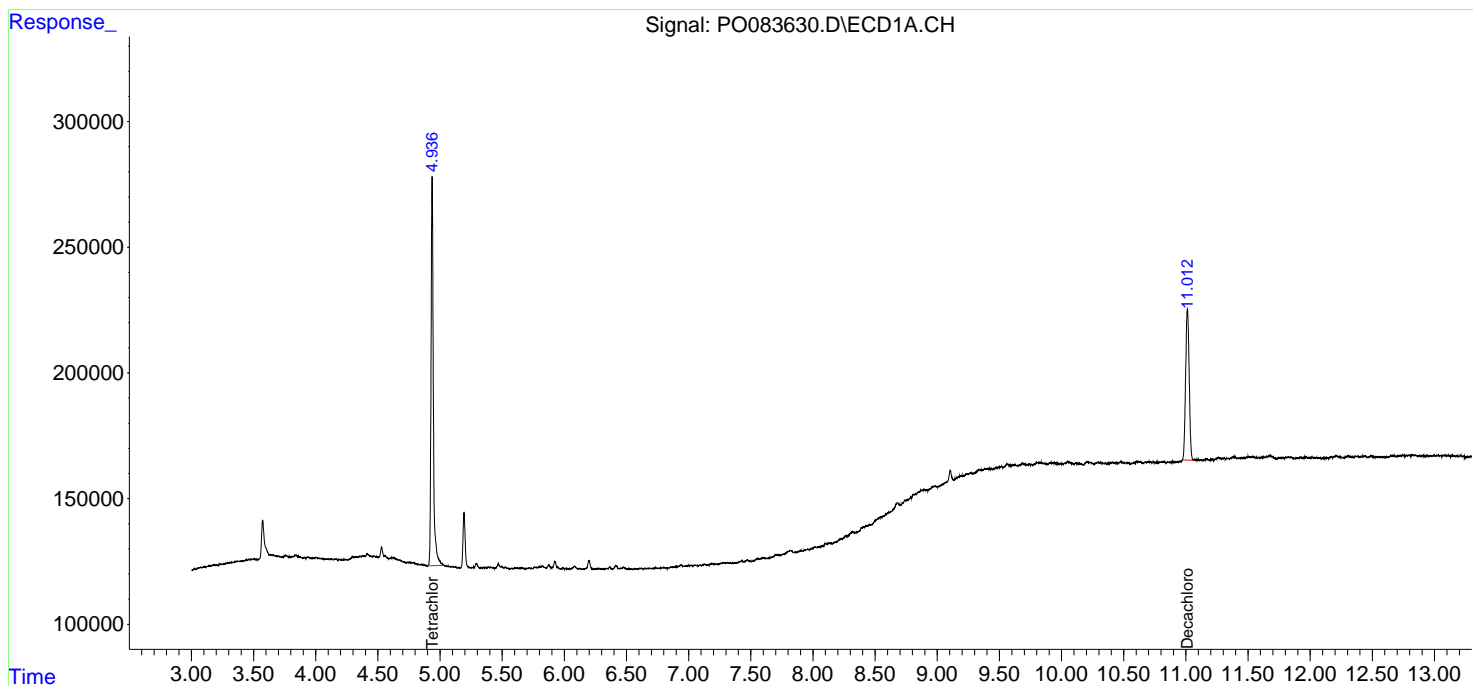
 (f)=RT Delta > 1/2 Window (#)=Amounts differ by > 25% (m)=manual int.

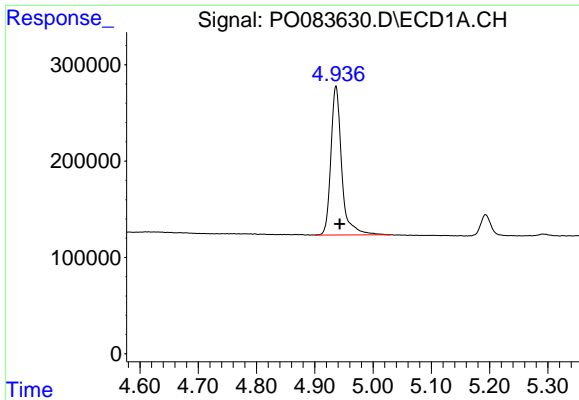
Data Path : Z:\pestpcbsrv\HPCHEM1\ECD_0\Data\PO121321\
 Data File : PO083630.D
 Signal(s) : Signal #1: ECD1A.CH Signal #2: ECD2B.CH
 Acq On : 13 Dec 2021 14:26
 Operator : AJ\MA
 Sample : M5022-29
 Misc :
 ALS Vial : 11 Sample Multiplier: 1

Instrument :
 ECD_0
 ClientSampleId :
 TP12

Integration File signal 1: autoint1.e
 Integration File signal 2: autoint2.e
 Quant Time: Dec 14 00:08:16 2021
 Quant Method : Z:\pestpcbsrv\HPCHEM1\ECD_0\methods\PO120621.M
 Quant Title : GC EXTRACTABLES
 QLast Update : Tue Dec 07 13:18:47 2021
 Response via : Initial Calibration
 Integrator: ChemStation 6890 Scale Mode: Small noise peaks clipped

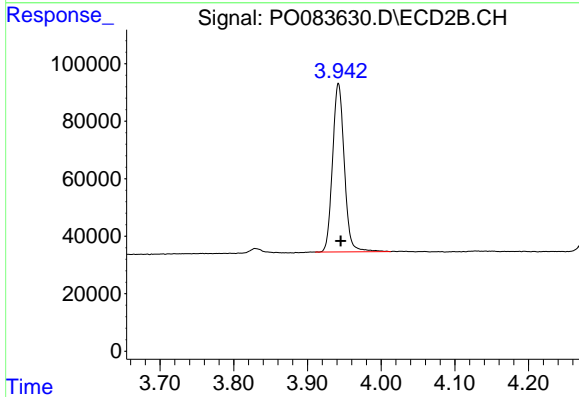
Volume Inj. : 2 µl
 Signal #1 Phase : ZB-MR1 Signal #2 Phase: ZB-MR2
 Signal #1 Info : 30Mx0.32mmx 0.50µ Signal #2 Info : 30M x 0.32mm x 0.25µm



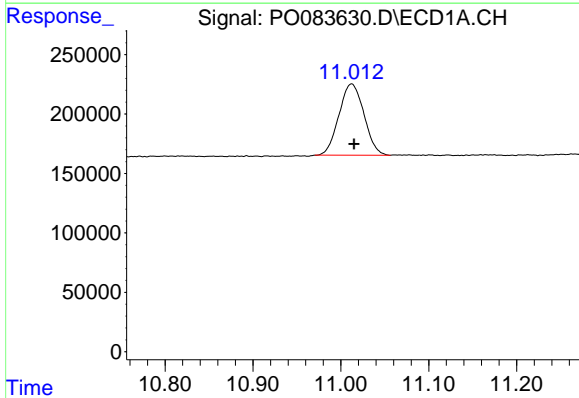


#1 Tetrachloro-m-xylene
 R.T.: 4.936 min
 Delta R.T.: -0.007 min
 Response: 1990596
 Conc: 20.86 ng/ml

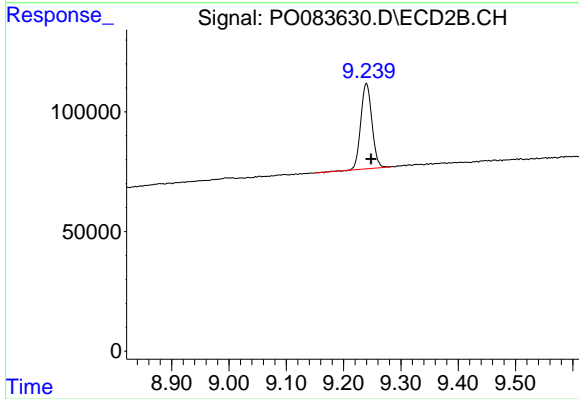
Instrument :
 ECD_O
 ClientSampleId :
 TP12



#1 Tetrachloro-m-xylene
 R.T.: 3.942 min
 Delta R.T.: -0.003 min
 Response: 648777
 Conc: 20.86 ng/ml



#2 Decachlorobiphenyl
 R.T.: 11.012 min
 Delta R.T.: -0.003 min
 Response: 1189360
 Conc: 16.65 ng/ml



#2 Decachlorobiphenyl
 R.T.: 9.240 min
 Delta R.T.: -0.008 min
 Response: 479911
 Conc: 14.71 ng/ml