

Data Path : Z:\pestpcbsrv\HPCHEM1\ECD\_O\Data\PO121418\  
 Data File : P0052576.D  
 Signal(s) : Signal #1: ECD1A.CH Signal #2: ECD2B.CH  
 Acq On : 15 Dec 2018 4:59  
 Operator : SM/SJ  
 Sample : J6436-02 10X  
 Misc :  
 ALS Vial : 59 Sample Multiplier: 1

**Instrument :**  
 ECD\_O  
**ClientSampleId :**  
 B368257

**Manual Integrations**  
**APPROVED**  
 Sohil  
 12/17/2018 2:24:07 PM

Integration File signal 1: autoint1.e  
 Integration File signal 2: autoint2.e  
 Quant Time: Dec 15 22:51:51 2018  
 Quant Method : Z:\pestpcbsrv\HPCHEM1\ECD\_O\methods\PO120318.M  
 Quant Title : GC EXTRACTABLES  
 QLast Update : Tue Dec 04 03:10:39 2018  
 Response via : Initial Calibration  
 Integrator: ChemStation 6890 Scale Mode: Small noise peaks clipped

Volume Inj. : 2 µl  
 Signal #1 Phase : ZB-MR1 Signal #2 Phase: ZB-MR2  
 Signal #1 Info : 30Mx0.32mmx 0.50µ Signal #2 Info : 30M x 0.32mm x 0.25µm

Compound	RT#1	RT#2	Resp#1	Resp#2	ng/ml	ng/ml
-----						
System Monitoring Compounds						
1) SA Tetrachlo...	4.265	3.283	2327716	268089	2.704	1.202 #
2) SA Decachlor...	9.817	7.970	881451	311625	1.761m	1.495

Target Compounds

(f)=RT Delta > 1/2 Window (#)=Amounts differ by > 25% (m)=manual int.

Data Path : Z:\pestpcbsrv\HPCHEM1\ECD\_O\Data\PO121418\  
 Data File : PO052576.D  
 Signal(s) : Signal #1: ECD1A.CH Signal #2: ECD2B.CH  
 Acq On : 15 Dec 2018 4:59  
 Operator : SM/SJ  
 Sample : J6436-02 10X  
 Misc :  
 ALS Vial : 59 Sample Multiplier: 1

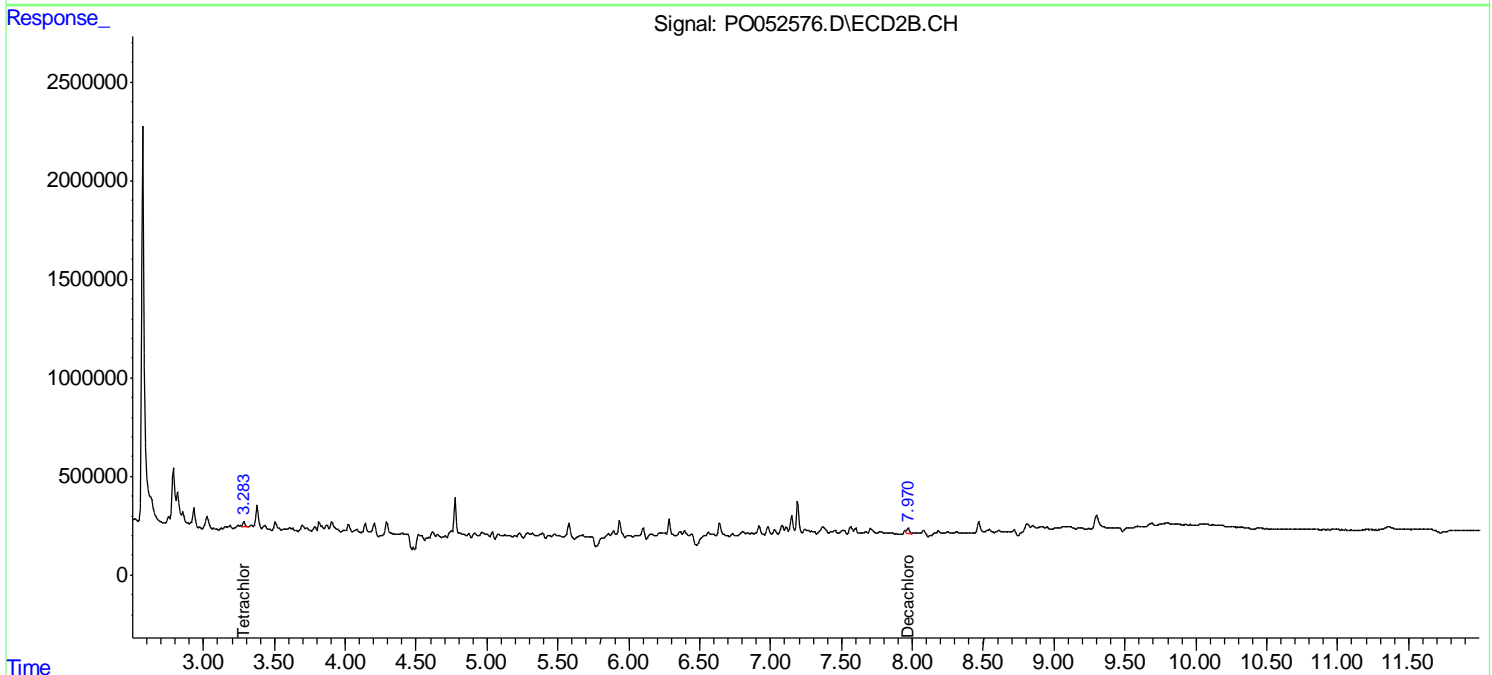
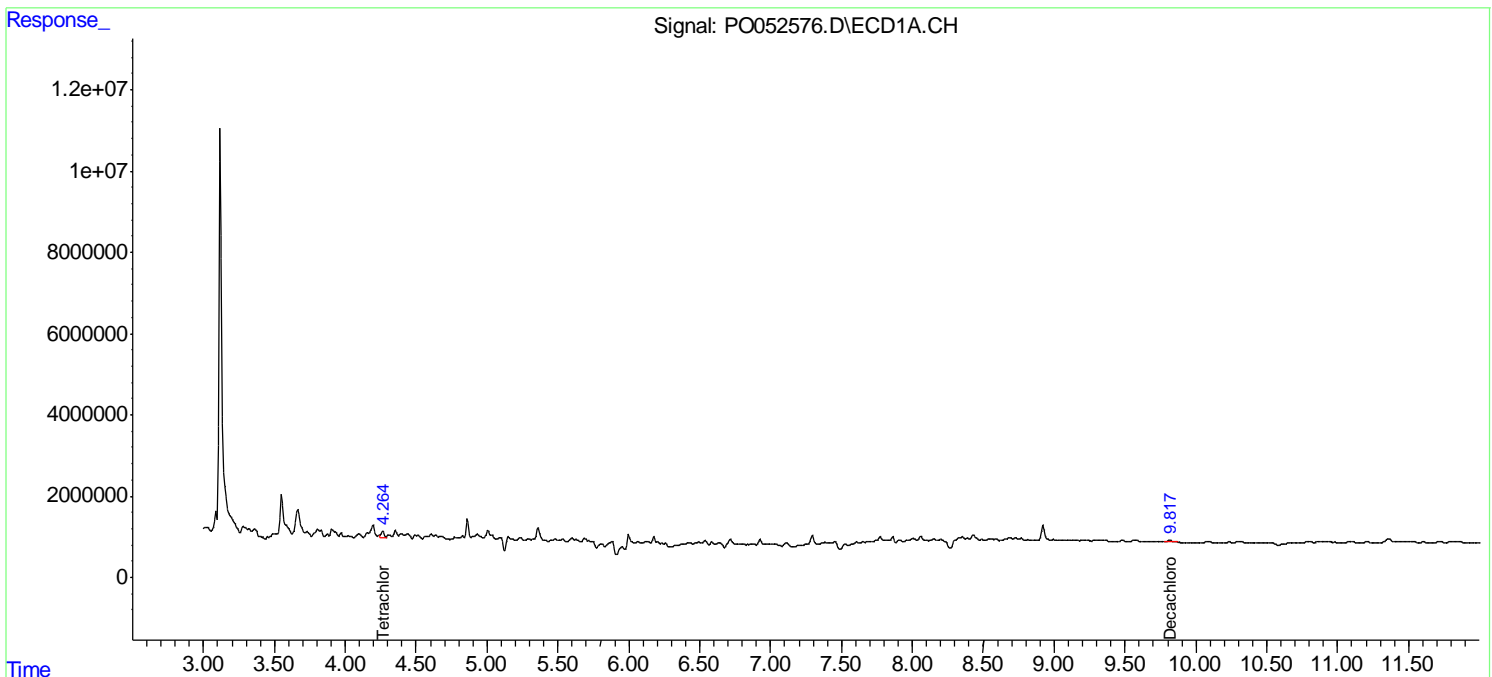
Instrument :  
 ECD\_O  
 ClientSampleId :  
 B368257

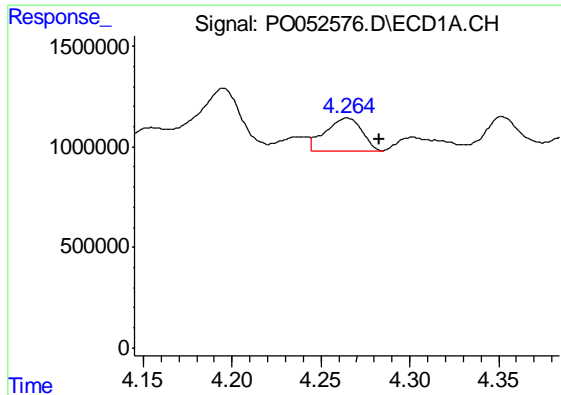
Manual Integrations  
 APPROVED

Sohil  
 12/17/2018 2:24:07 PM

Integration File signal 1: autoint1.e  
 Integration File signal 2: autoint2.e  
 Quant Time: Dec 15 22:51:51 2018  
 Quant Method : Z:\pestpcbsrv\HPCHEM1\ECD\_O\methods\PO120318.M  
 Quant Title : GC EXTRACTABLES  
 QLast Update : Tue Dec 04 03:10:39 2018  
 Response via : Initial Calibration  
 Integrator: ChemStation 6890 Scale Mode: Small noise peaks clipped

Volume Inj. : 2 µl  
 Signal #1 Phase : ZB-MR1 Signal #2 Phase: ZB-MR2  
 Signal #1 Info : 30Mx0.32mmx 0.50µ Signal #2 Info : 30M x 0.32mm x 0.25µm

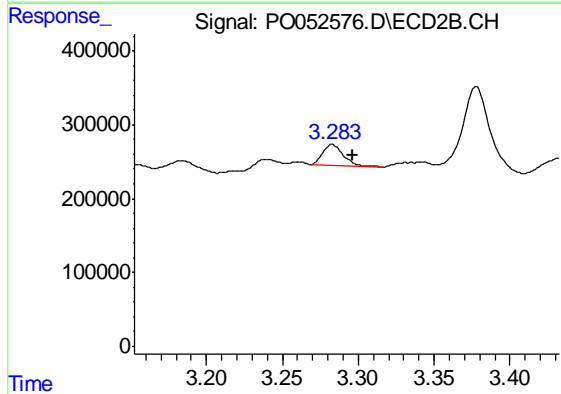




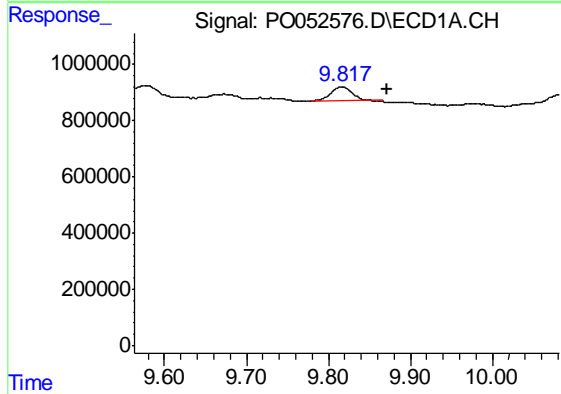
#1 Tetrachloro-m-xylene  
 R.T.: 4.265 min  
 Delta R.T.: -0.018 min  
 Response: 2327716  
 Conc: 2.70 ng/ml

Instrument :  
 ECD\_O  
 ClientSampled :  
 B368257

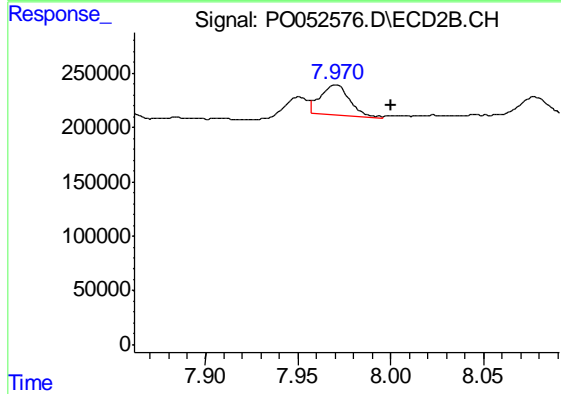
Manual Integrations  
 APPROVED  
 Sohil  
 12/17/2018 2:24:07 PM



#1 Tetrachloro-m-xylene  
 R.T.: 3.283 min  
 Delta R.T.: -0.013 min  
 Response: 268089  
 Conc: 1.20 ng/ml



#2 Decachlorobiphenyl  
 R.T.: 9.817 min  
 Delta R.T.: -0.055 min  
 Response: 881451  
 Conc: 1.76 ng/ml m



#2 Decachlorobiphenyl  
 R.T.: 7.970 min  
 Delta R.T.: -0.030 min  
 Response: 311625  
 Conc: 1.49 ng/ml