

Data Path : Z:\pestpcbsrv\HPCHEM1\ECD_0\Data\PO121420\
 Data File : PO073770.D
 Signal(s) : Signal #1: ECD1A.CH Signal #2: ECD2B.CH
 Acq On : 14 Dec 2020 17:29
 Operator : DD\AJ
 Sample : L5026-12
 Misc :
 ALS Vial : 21 Sample Multiplier: 1

Instrument :
 ECD_0
 ClientSampleId :
 SB-56(8.0-8.5)

Integration File signal 1: autoint1.e
 Integration File signal 2: autoint2.e
 Quant Time: Dec 15 03:34:10 2020
 Quant Method : Z:\pestpcbsrv\HPCHEM1\ECD_0\methods\PO121020.M
 Quant Title : GC EXTRACTABLES
 QLast Update : Fri Dec 11 03:58:06 2020
 Response via : Initial Calibration
 Integrator: ChemStation 6890 Scale Mode: Small noise peaks clipped

Volume Inj. : 2 µl
 Signal #1 Phase : ZB-MR1 Signal #2 Phase: ZB-MR2
 Signal #1 Info : 30Mx0.32mmx 0.50µ Signal #2 Info : 30M x 0.32mm x 0.25µm

Compound	RT#1	RT#2	Resp#1	Resp#2	ng/ml	ng/ml

System Monitoring Compounds						
1) SA Tetrachlo...	4.939	3.998	2136629	1311031	23.370	24.443
2) SA Decachlor...	10.967	9.266	1926277	1166291	23.309	24.926
Target Compounds						
26) L6 AR-1254-1	7.177	6.113	1934605	1932256	509.671	546.753
27) L6 AR-1254-2	7.407	6.273	3138892	1693397	532.394	542.405
28) L6 AR-1254-3	7.790	6.689	3685249	2903443	601.459	593.024
29) L6 AR-1254-4	8.087	6.928	3348896	2395422	638.372	683.029
30) L6 AR-1254-5	8.517	7.354	2983496	2708459	579.260	614.215

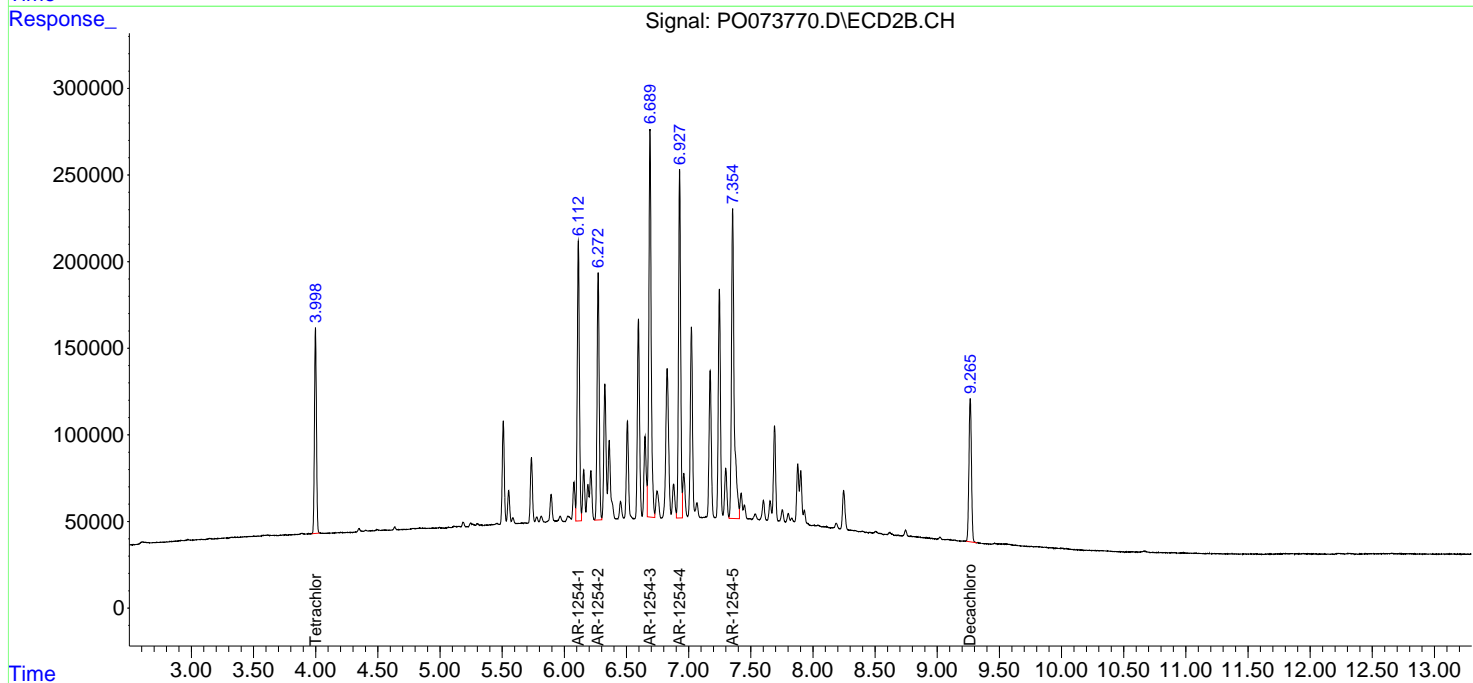
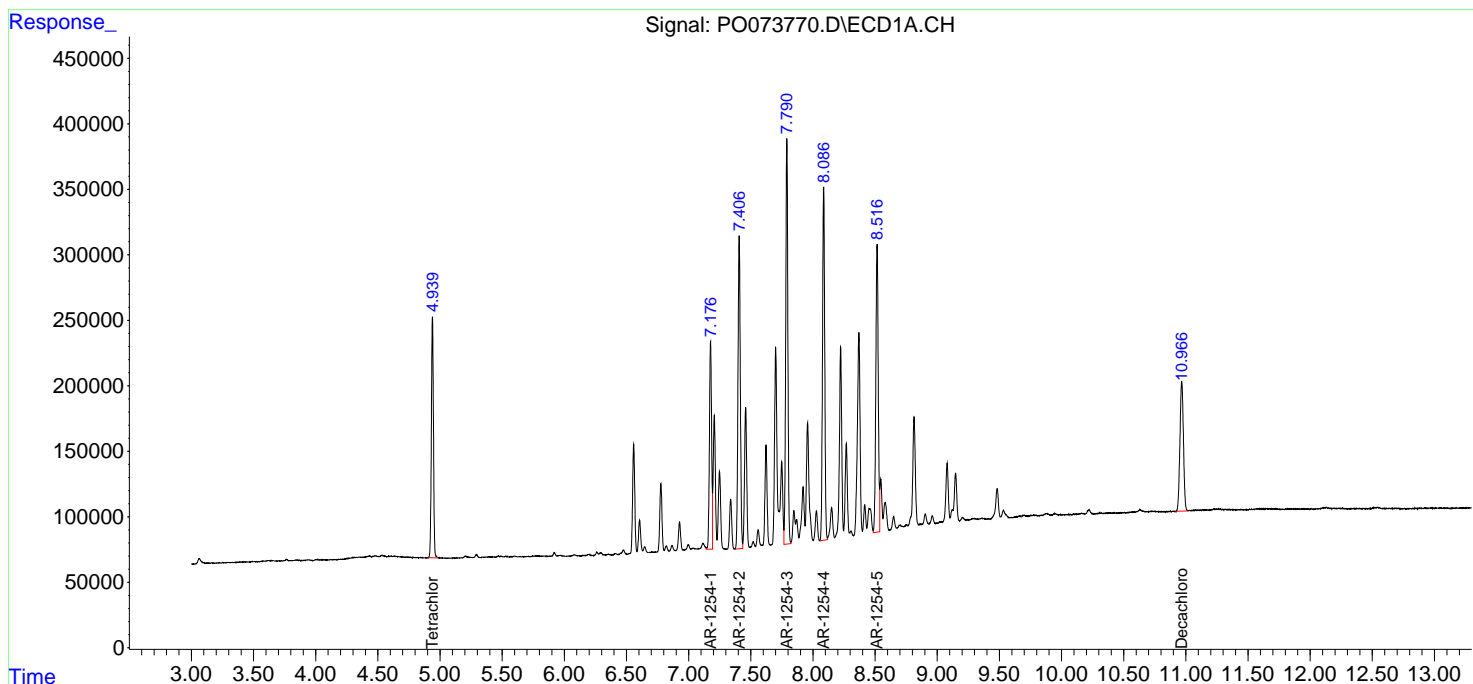
(f)=RT Delta > 1/2 Window (#)=Amounts differ by > 25% (m)=manual int.

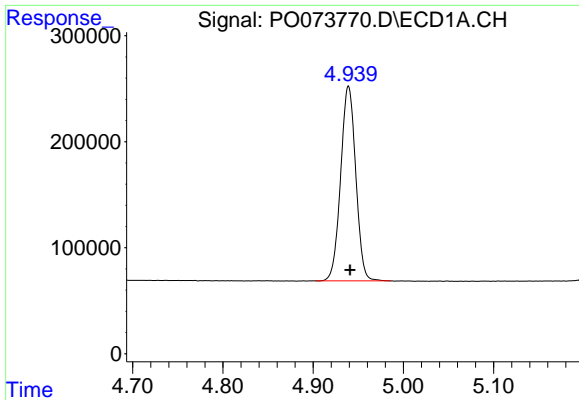
Data Path : Z:\pestpcbsrv\HPCHEM1\ECD_0\Data\PO121420\
 Data File : PO073770.D
 Signal(s) : Signal #1: ECD1A.CH Signal #2: ECD2B.CH
 Acq On : 14 Dec 2020 17:29
 Operator : DD\AJ
 Sample : L5026-12
 Misc :
 ALS Vial : 21 Sample Multiplier: 1

Instrument :
 ECD_O
 ClientSampled :
 SB-56(8.0-8.5)

Integration File signal 1: autoint1.e
 Integration File signal 2: autoint2.e
 Quant Time: Dec 15 03:34:10 2020
 Quant Method : Z:\pestpcbsrv\HPCHEM1\ECD_0\methods\PO121020.M
 Quant Title : GC EXTRACTABLES
 QLast Update : Fri Dec 11 03:58:06 2020
 Response via : Initial Calibration
 Integrator: ChemStation 6890 Scale Mode: Small noise peaks clipped

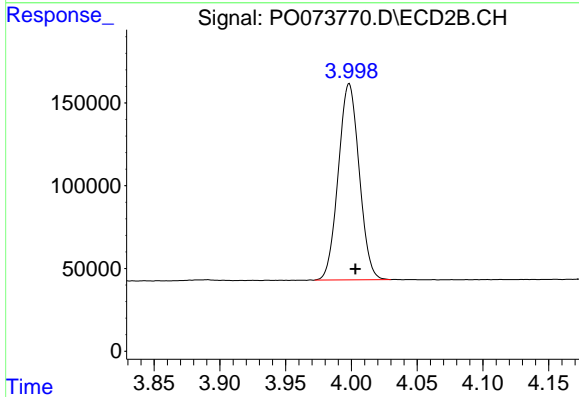
Volume Inj. : 2 µl
 Signal #1 Phase : ZB-MR1 Signal #2 Phase: ZB-MR2
 Signal #1 Info : 30Mx0.32mmx 0.50µ Signal #2 Info : 30M x 0.32mm x 0.25µm



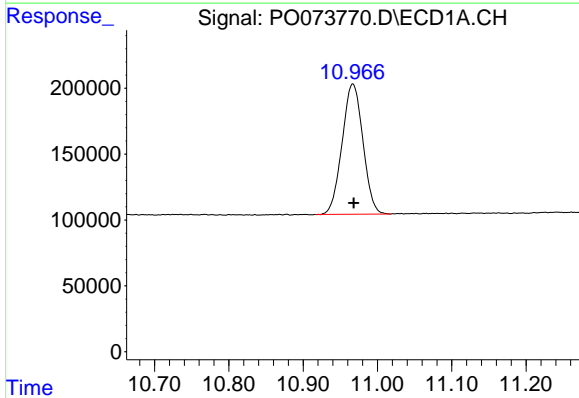


#1 Tetrachloro-m-xylene
 R.T.: 4.939 min
 Delta R.T.: -0.002 min
 Response: 2136629
 Conc: 23.37 ng/ml

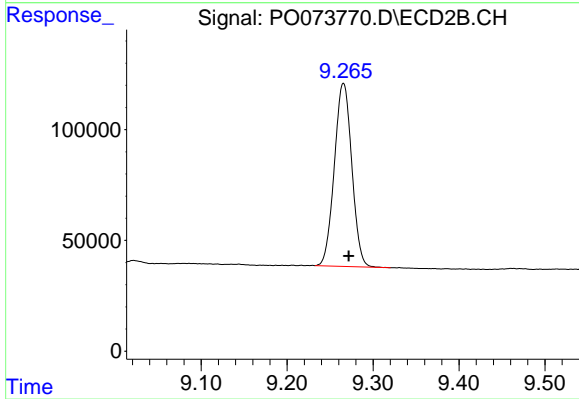
Instrument :
 ECD_O
 ClientSampleId :
 SB-56(8.0-8.5)



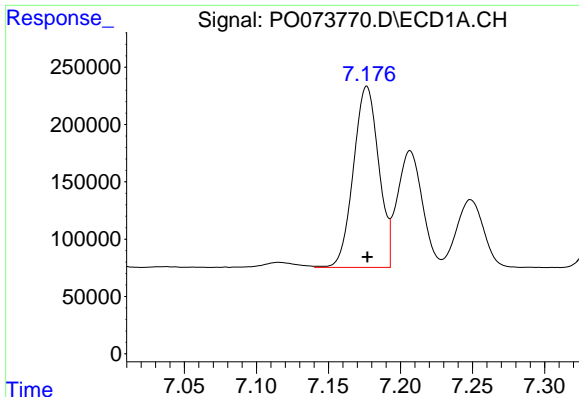
#1 Tetrachloro-m-xylene
 R.T.: 3.998 min
 Delta R.T.: -0.005 min
 Response: 1311031
 Conc: 24.44 ng/ml



#2 Decachlorobiphenyl
 R.T.: 10.967 min
 Delta R.T.: -0.001 min
 Response: 1926277
 Conc: 23.31 ng/ml



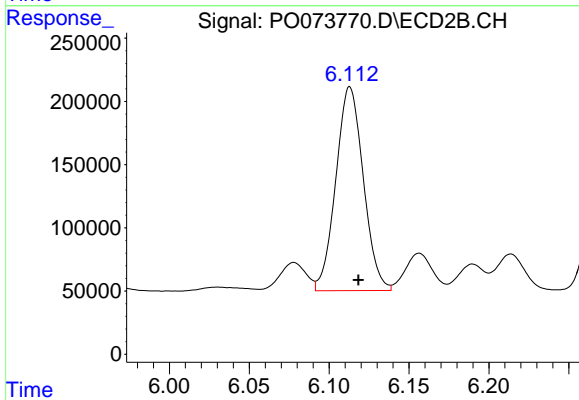
#2 Decachlorobiphenyl
 R.T.: 9.266 min
 Delta R.T.: -0.006 min
 Response: 1166291
 Conc: 24.93 ng/ml



#26 AR-1254-1

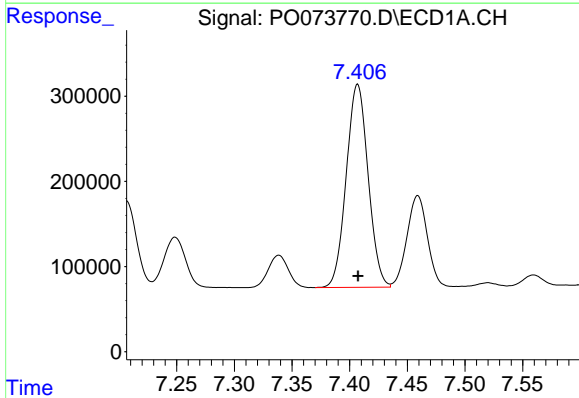
R.T.: 7.177 min
 Delta R.T.: 0.000 min
 Response: 1934605
 Conc: 509.67 ng/ml

Instrument :
 ECD_O
 ClientSampled :
 SB-56(8.0-8.5)



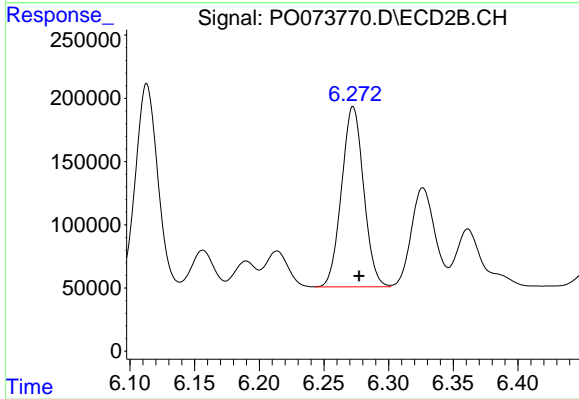
#26 AR-1254-1

R.T.: 6.113 min
 Delta R.T.: -0.005 min
 Response: 1932256
 Conc: 546.75 ng/ml



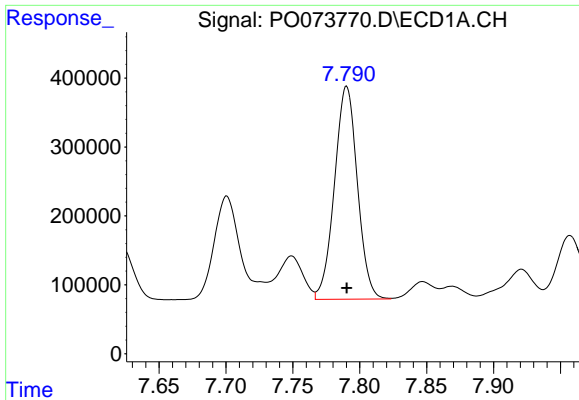
#27 AR-1254-2

R.T.: 7.407 min
 Delta R.T.: 0.000 min
 Response: 3138892
 Conc: 532.39 ng/ml



#27 AR-1254-2

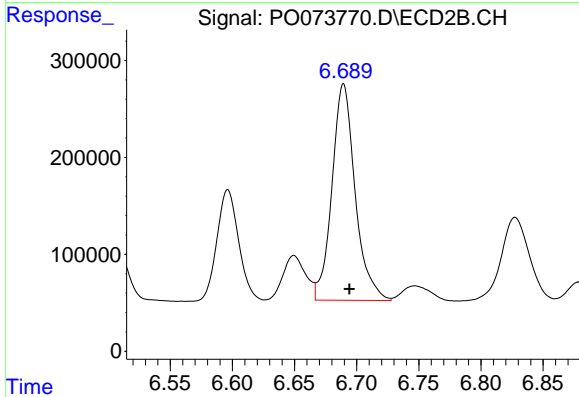
R.T.: 6.273 min
 Delta R.T.: -0.004 min
 Response: 1693397
 Conc: 542.41 ng/ml



#28 AR-1254-3

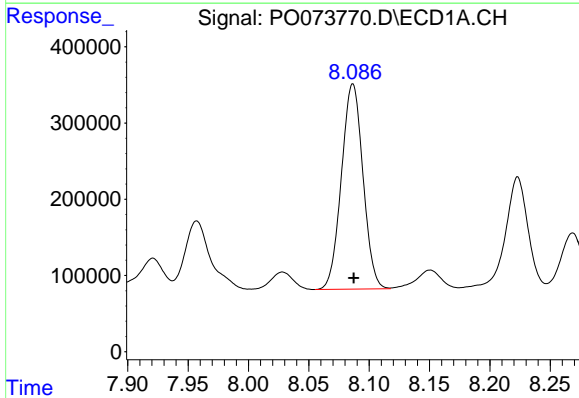
R.T.: 7.790 min
 Delta R.T.: 0.000 min
 Response: 3685249
 Conc: 601.46 ng/ml

Instrument :
 ECD_O
 ClientSampleId :
 SB-56(8.0-8.5)



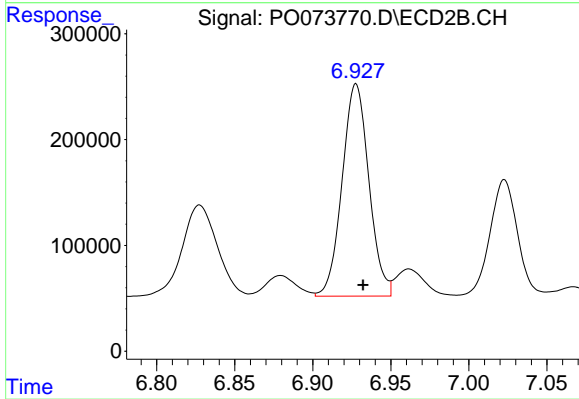
#28 AR-1254-3

R.T.: 6.689 min
 Delta R.T.: -0.005 min
 Response: 2903443
 Conc: 593.02 ng/ml



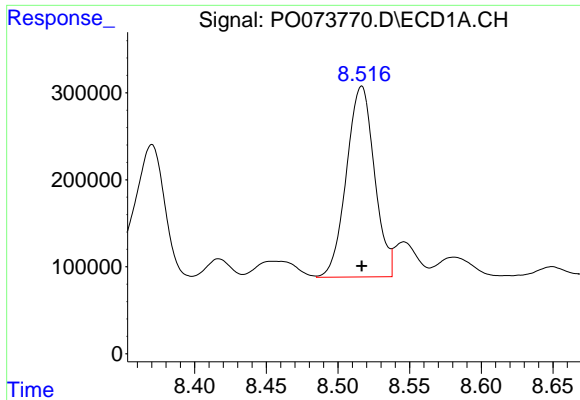
#29 AR-1254-4

R.T.: 8.087 min
 Delta R.T.: 0.000 min
 Response: 3348896
 Conc: 638.37 ng/ml



#29 AR-1254-4

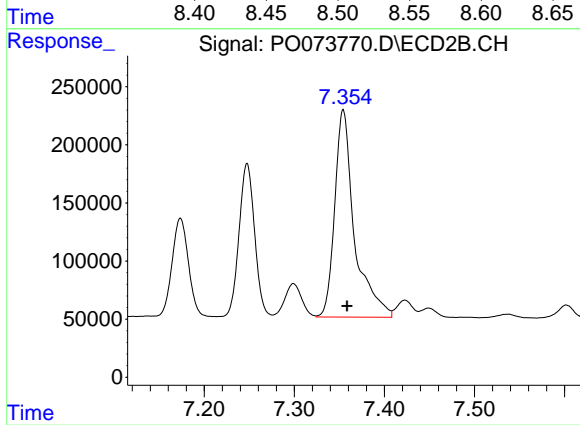
R.T.: 6.928 min
 Delta R.T.: -0.005 min
 Response: 2395422
 Conc: 683.03 ng/ml



#30 AR-1254-5

R.T.: 8.517 min
Delta R.T.: 0.000 min
Response: 2983496
Conc: 579.26 ng/ml

Instrument :
ECD_O
ClientSampled :
SB-56(8.0-8.5)



#30 AR-1254-5

R.T.: 7.354 min
Delta R.T.: -0.004 min
Response: 2708459
Conc: 614.22 ng/ml