

Data Path : Z:\pestpcbsrv\HPCHEM1\ECD_0\Data\PO121420\
 Data File : PO073778.D
 Signal(s) : Signal #1: ECD1A.CH Signal #2: ECD2B.CH
 Acq On : 14 Dec 2020 20:03
 Operator : DD\AJ
 Sample : AR1254CCC500
 Misc :
 ALS Vial : 5 Sample Multiplier: 1

Instrument :
 ECD_0
 ClientSampleId :
 AR1254CCC500

Integration File signal 1: autoint1.e
 Integration File signal 2: autoint2.e
 Quant Time: Dec 15 03:38:31 2020
 Quant Method : Z:\pestpcbsrv\HPCHEM1\ECD_0\methods\PO121020.M
 Quant Title : GC EXTRACTABLES
 QLast Update : Fri Dec 11 03:58:06 2020
 Response via : Initial Calibration
 Integrator: ChemStation 6890 Scale Mode: Small noise peaks clipped

Volume Inj. : 2 µl
 Signal #1 Phase : ZB-MR1 Signal #2 Phase: ZB-MR2
 Signal #1 Info : 30Mx0.32mmx 0.50µ Signal #2 Info : 30M x 0.32mm x 0.25µm

Compound	RT#1	RT#2	Resp#1	Resp#2	ng/ml	ng/ml

System Monitoring Compounds						
1) SA Tetrachlo...	4.938	3.998	4658746	2829370	50.956	52.751
2) SA Decachlor...	10.964	9.264	4146024	2460259	50.170	52.580
Target Compounds						
26) L6 AR-1254-1	7.175	6.112	1817342	1709663	478.779	483.768
27) L6 AR-1254-2	7.405	6.271	2800368	1487718	474.976	476.525
28) L6 AR-1254-3	7.788	6.688	2879227	2318745	469.910	473.600
29) L6 AR-1254-4	8.085	6.927	2422042	1695679	461.693	483.505
30) L6 AR-1254-5	8.516	7.353	2404403	2166356	466.826	491.279

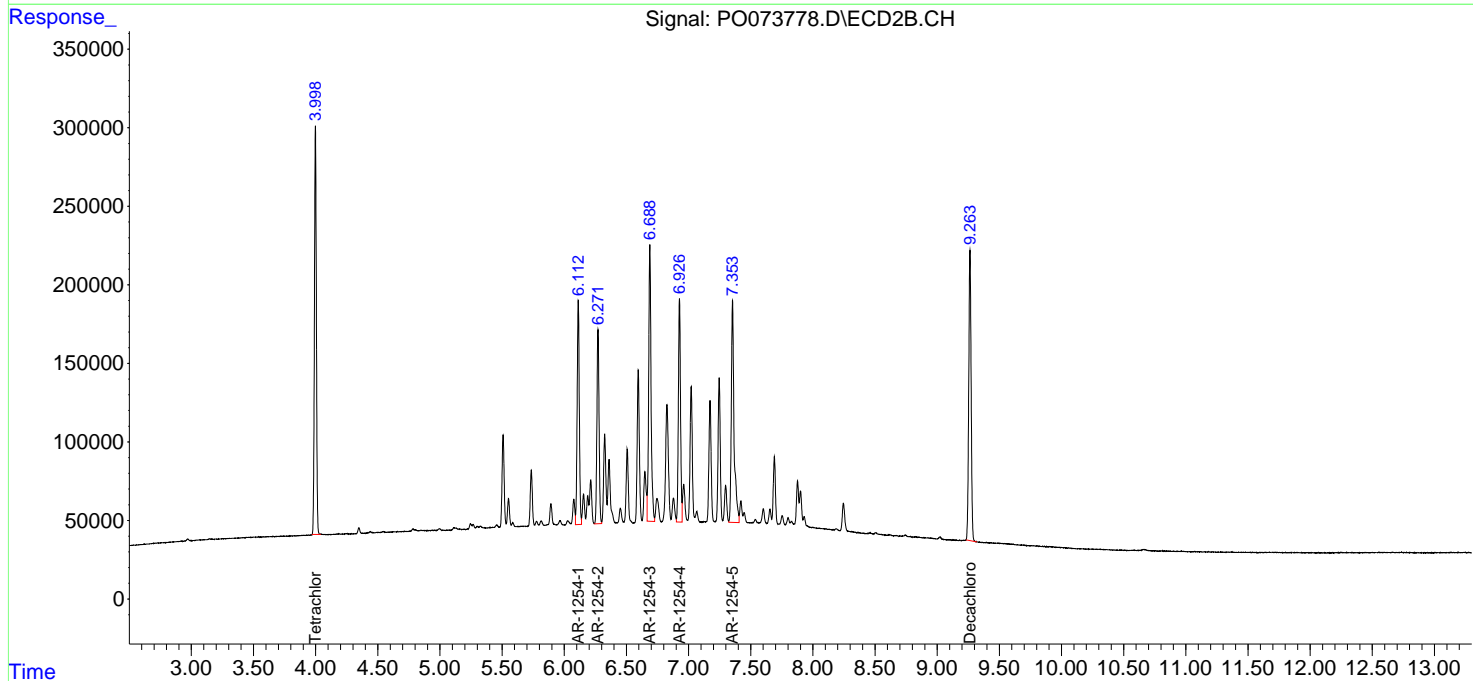
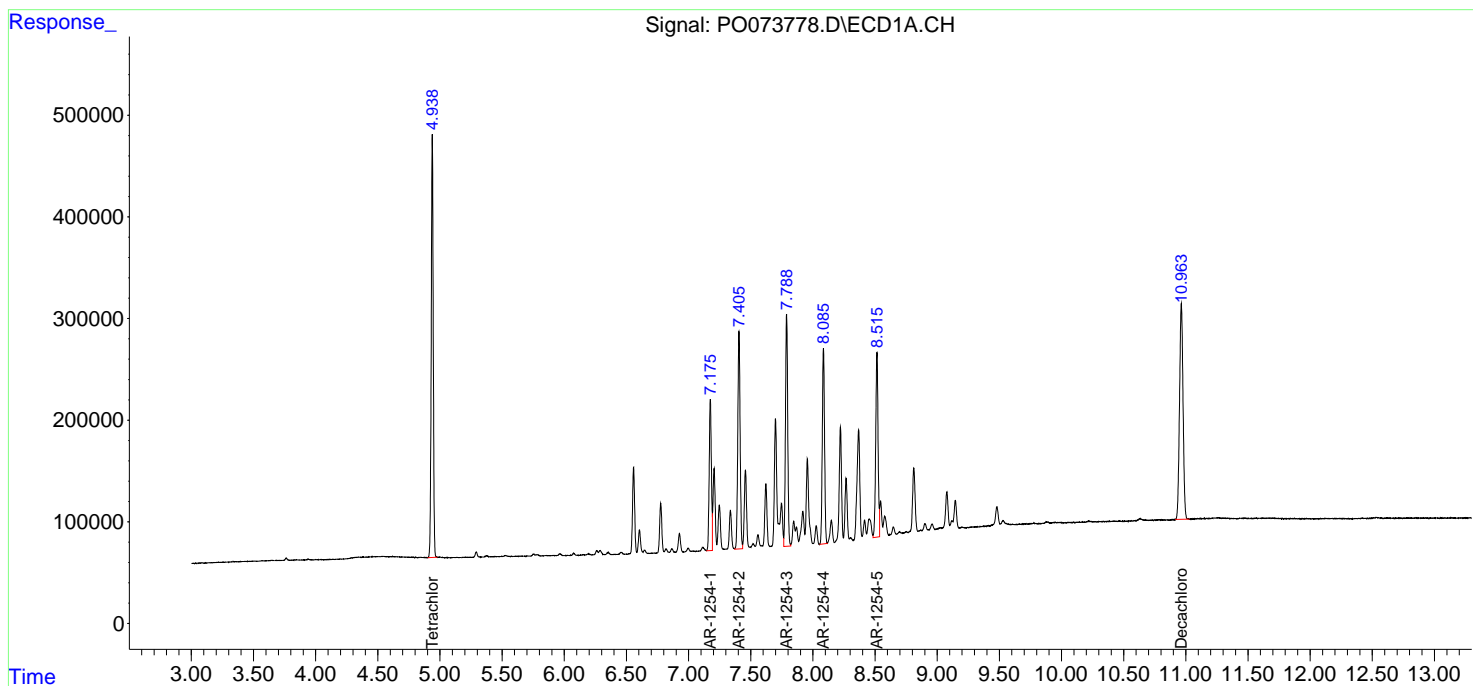
(f)=RT Delta > 1/2 Window (#)=Amounts differ by > 25% (m)=manual int.

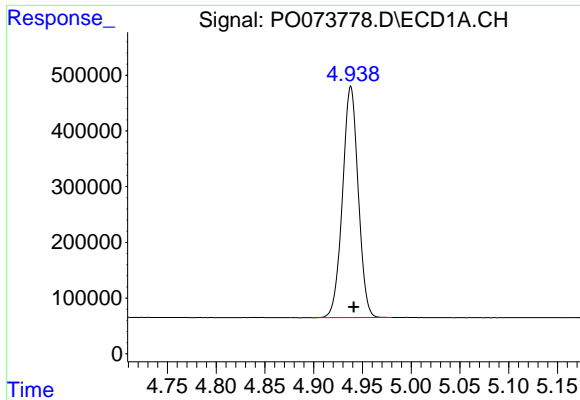
Data Path : Z:\pestpcbsrv\HPCHEM1\ECD_0\Data\PO121420\
 Data File : PO073778.D
 Signal(s) : Signal #1: ECD1A.CH Signal #2: ECD2B.CH
 Acq On : 14 Dec 2020 20:03
 Operator : DD\AJ
 Sample : AR1254CCC500
 Misc :
 ALS Vial : 5 Sample Multiplier: 1

Instrument :
 ECD_O
 ClientSampled :
 AR1254CCC500

Integration File signal 1: autoint1.e
 Integration File signal 2: autoint2.e
 Quant Time: Dec 15 03:38:31 2020
 Quant Method : Z:\pestpcbsrv\HPCHEM1\ECD_0\methods\PO121020.M
 Quant Title : GC EXTRACTABLES
 QLast Update : Fri Dec 11 03:58:06 2020
 Response via : Initial Calibration
 Integrator: ChemStation 6890 Scale Mode: Small noise peaks clipped

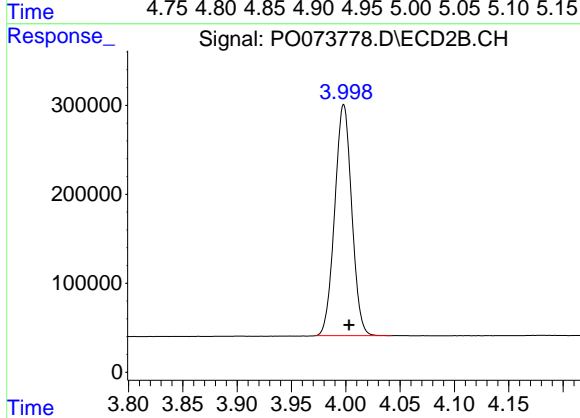
Volume Inj. : 2 µl
 Signal #1 Phase : ZB-MR1 Signal #2 Phase: ZB-MR2
 Signal #1 Info : 30Mx0.32mmx 0.50µ Signal #2 Info : 30M x 0.32mm x 0.25µm



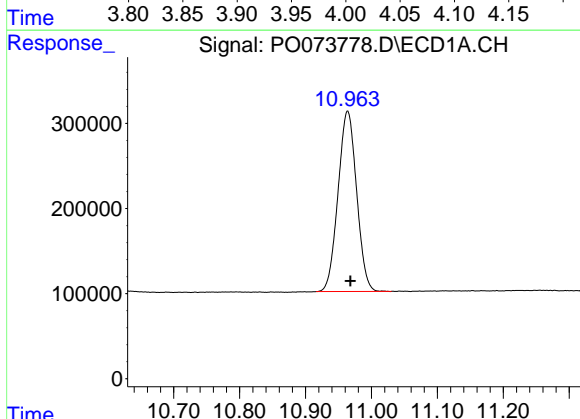


#1 Tetrachloro-m-xylene
 R.T.: 4.938 min
 Delta R.T.: -0.003 min
 Response: 4658746
 Conc: 50.96 ng/ml

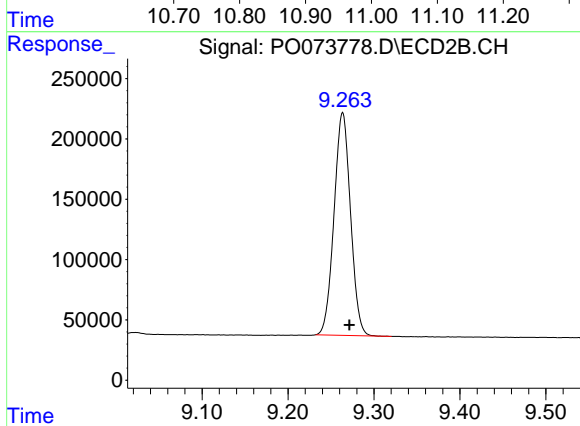
Instrument :
 ECD_O
 ClientSampleId :
 AR1254CCC500



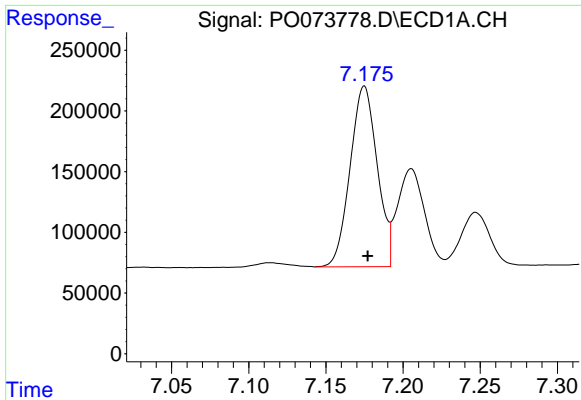
#1 Tetrachloro-m-xylene
 R.T.: 3.998 min
 Delta R.T.: -0.005 min
 Response: 2829370
 Conc: 52.75 ng/ml



#2 Decachlorobiphenyl
 R.T.: 10.964 min
 Delta R.T.: -0.004 min
 Response: 4146024
 Conc: 50.17 ng/ml



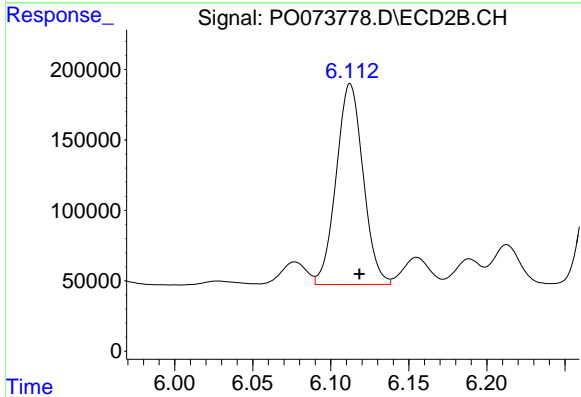
#2 Decachlorobiphenyl
 R.T.: 9.264 min
 Delta R.T.: -0.008 min
 Response: 2460259
 Conc: 52.58 ng/ml



#26 AR-1254-1

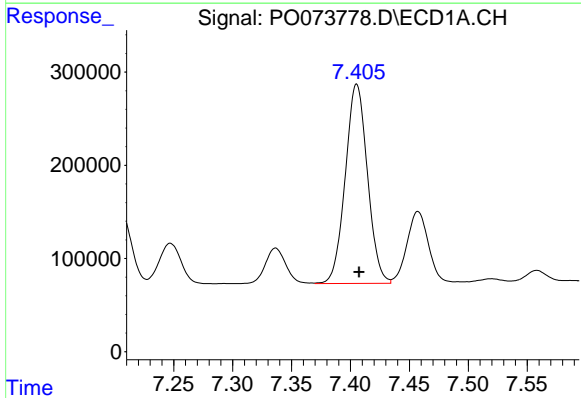
R.T.: 7.175 min
 Delta R.T.: -0.002 min
 Response: 1817342
 Conc: 478.78 ng/ml

Instrument :
 ECD_O
 ClientSampled :
 AR1254CCC500



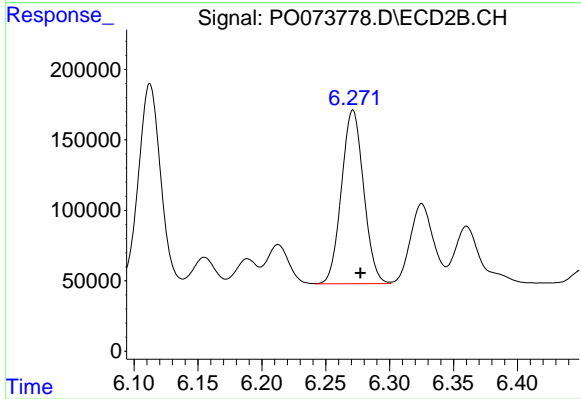
#26 AR-1254-1

R.T.: 6.112 min
 Delta R.T.: -0.006 min
 Response: 1709663
 Conc: 483.77 ng/ml



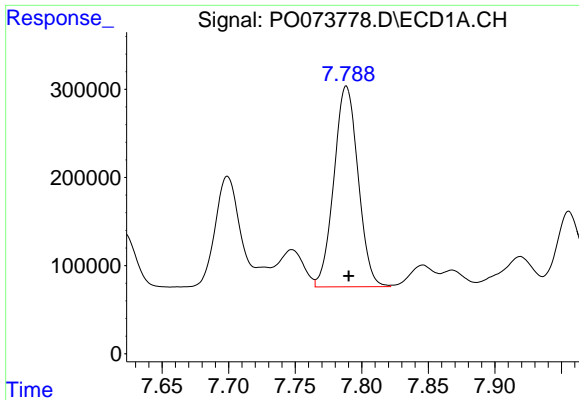
#27 AR-1254-2

R.T.: 7.405 min
 Delta R.T.: -0.002 min
 Response: 2800368
 Conc: 474.98 ng/ml



#27 AR-1254-2

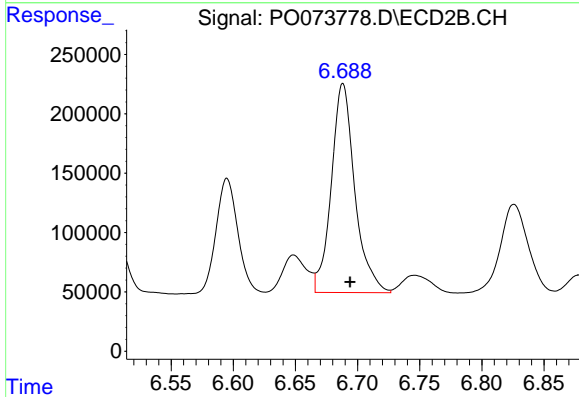
R.T.: 6.271 min
 Delta R.T.: -0.006 min
 Response: 1487718
 Conc: 476.53 ng/ml



#28 AR-1254-3

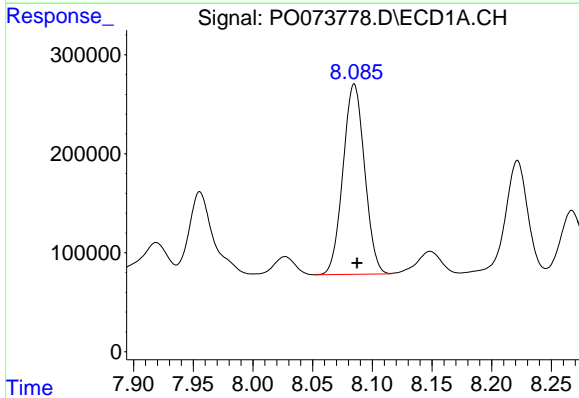
R.T.: 7.788 min
 Delta R.T.: -0.002 min
 Response: 2879227
 Conc: 469.91 ng/ml

Instrument :
 ECD_O
 ClientSampleId :
 AR1254CCC500



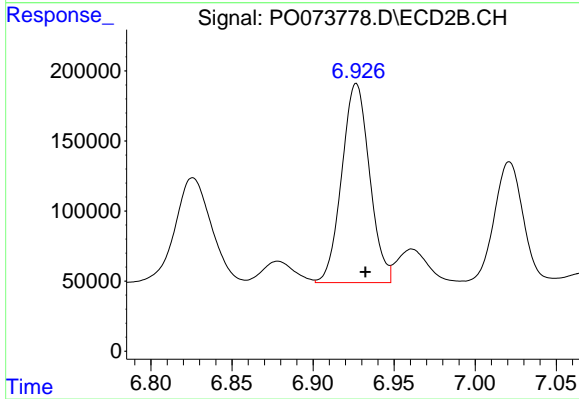
#28 AR-1254-3

R.T.: 6.688 min
 Delta R.T.: -0.006 min
 Response: 2318745
 Conc: 473.60 ng/ml



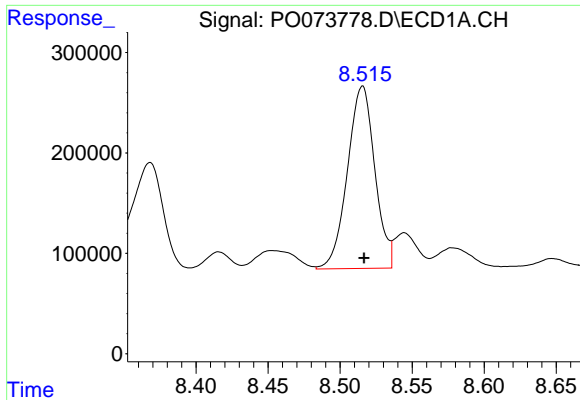
#29 AR-1254-4

R.T.: 8.085 min
 Delta R.T.: -0.002 min
 Response: 2422042
 Conc: 461.69 ng/ml



#29 AR-1254-4

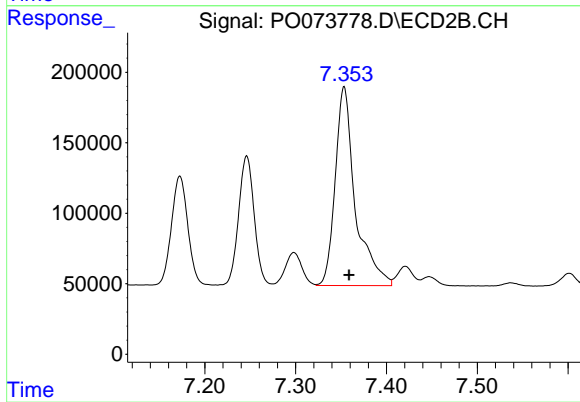
R.T.: 6.927 min
 Delta R.T.: -0.006 min
 Response: 1695679
 Conc: 483.51 ng/ml



#30 AR-1254-5

R.T.: 8.516 min
Delta R.T.: -0.001 min
Response: 2404403
Conc: 466.83 ng/ml

Instrument :
ECD_O
ClientSampleId :
AR1254CCC500



#30 AR-1254-5

R.T.: 7.353 min
Delta R.T.: -0.005 min
Response: 2166356
Conc: 491.28 ng/ml