

Data Path : Z:\pestpcbsrv\HPCHEM1\ECD_0\Data\P0121423\
 Data File : P0100489.D
 Signal(s) : Signal #1: ECD1A.ch Signal #2: ECD2B.ch
 Acq On : 14 Dec 2023 15:29
 Operator : YP/AJ
 Sample : 05804-01
 Misc :
 ALS Vial : 13 Sample Multiplier: 1

Instrument :
 ECD_0
ClientSampleId :
 FENCE-POST-CONCRETE

Integration File signal 1: autoint1.e
 Integration File signal 2: autoint2.e
 Quant Time: Dec 14 23:22:53 2023
 Quant Method : Z:\pestpcbsrv\HPCHEM1\ECD_0\methods\P0121323.M
 Quant Title : GC EXTRACTABLES
 QLast Update : Thu Dec 14 05:06:46 2023
 Response via : Initial Calibration
 Integrator: ChemStation

Volume Inj. : 2 µl
 Signal #1 Phase : ZB-MR2 Signal #2 Phase: ZB-MR2
 Signal #1 Info : 30Mx0.32mmx 0.50µ Signal #2 Info : 30M x 0.32mm x 0.25µm

Compound	RT#1	RT#2	Resp#1	Resp#2	ng/ml	ng/ml

System Monitoring Compounds						
1) SA Tetrachlo...	4.468	3.694	31665788	30954385	20.691	20.940
2) SA Decachlor...	10.326	8.771	21382890	24751508	22.687	23.187
Target Compounds						
3) L1 AR-1016-1	5.649	4.795	147821	190597	3.702	6.523 #
4) L1 AR-1016-2	5.674	4.815	287399	158914	4.713	3.885
5) L1 AR-1016-3	5.737	4.988	238234	111860	6.292	5.208
6) L1 AR-1016-4	5.865	5.040	31057	212227	1.066	11.153 #
7) L1 AR-1016-5	6.138	5.244	62836	74636	1.909	3.298 #
8) L2 AR-1221-1	4.684	3.939	728864	35701	45.115	2.212 #
9) L2 AR-1221-2	4.779	4.001	446764	1075475	37.837	91.348 #
10) L2 AR-1221-3	4.860	4.079	126000	141057	3.345	4.133
11) L3 AR-1232-1	4.860	4.079	126000	141057	4.270	5.157
12) L3 AR-1232-2	5.401	4.815	639535	158914	36.945	8.601 #
13) L3 AR-1232-3	5.674	4.988	287399	111860	11.043	11.873
14) L3 AR-1232-4	5.865	5.075	31057	62275	2.567	6.675 #
15) L3 AR-1232-5	5.927	5.244	141845	74636	12.324	7.986 #
16) L4 AR-1242-1	5.649	4.795	147821	190597	4.667	8.143 #
17) L4 AR-1242-2	5.674	4.815	287399	158914	6.001	4.874
18) L4 AR-1242-3	5.737	4.988	238234	111860	7.998	6.427
19) L4 AR-1242-4	5.865	5.075	31057	62275	1.386	3.306 #
20) L4 AR-1242-5	6.588	5.607	94757	749578	4.526	34.104 #
21) L5 AR-1248-1	5.649	4.795	147821	190597	6.584	10.752 #
22) L5 AR-1248-2	5.927	5.040	141845	212227	3.445	8.053 #
23) L5 AR-1248-3	6.138	5.075	62836	62275	1.462	2.293 #
24) L5 AR-1248-4	6.539	5.244	142246	74636	3.998	2.506 #
25) L5 AR-1248-5	6.588	5.662	94757	547626	2.788	21.192 #
26) L6 AR-1254-1	6.520	5.607	196222	749578	4.135	16.882 #
27) L6 AR-1254-2	6.738	5.759	129201	1159048	1.920	28.752 #
28) L6 AR-1254-3	7.109	6.172	354531	842684	5.775	14.923 #
29) L6 AR-1254-4	7.389	6.394	651944	520869	20.606	15.625
30) L6 AR-1254-5	7.820	6.814	548802	775032	13.386	13.491
31) L7 AR-1260-1	7.275	6.294	253748	1383529	4.442	25.673 #
32) L7 AR-1260-2	7.534	6.484	98291	798656	1.728	13.064 #
33) L7 AR-1260-3	7.898	6.644	259915	934589	5.181	14.195 #
34) L7 AR-1260-4	8.142	7.116	78818	392683	1.438	7.274 #
35) L7 AR-1260-5	8.457	7.356	457337	799486	5.079	6.970 #
36) L8 AR-1262-1	7.820	6.814	548802	775032	15.563	25.243 #
37) L8 AR-1262-2	8.457	7.116	457337	392683	5.245	6.055
38) L8 AR-1262-3	8.785	7.641	289355	160783	4.696	3.255 #
39) L8 AR-1262-4	8.869	7.708	277115	403176	5.736	4.714
40) L8 AR-1262-5	9.549	8.207	165703	218756	6.341	6.339
41) L9 AR-1268-1	8.785	7.641	289355	160783	2.486	1.159 #

Data Path : Z:\pestpcbsrv\HPCHEM1\ECD_0\Data\P0121423\
 Data File : P0100489.D
 Signal(s) : Signal #1: ECD1A.ch Signal #2: ECD2B.ch
 Acq On : 14 Dec 2023 15:29
 Operator : YP/AJ
 Sample : 05804-01
 Misc :
 ALS Vial : 13 Sample Multiplier: 1

Instrument :
 ECD_0
ClientSampleId :
 FENCE-POST-CONCRETE

Integration File signal 1: autoint1.e
 Integration File signal 2: autoint2.e
 Quant Time: Dec 14 23:22:53 2023
 Quant Method : Z:\pestpcbsrv\HPCHEM1\ECD_0\methods\P0121323.M
 Quant Title : GC EXTRACTABLES
 QLast Update : Thu Dec 14 05:06:46 2023
 Response via : Initial Calibration
 Integrator: ChemStation

Volume Inj. : 2 µl
 Signal #1 Phase : ZB-MR1 Signal #2 Phase: ZB-MR2
 Signal #1 Info : 30Mx0.32mmx 0.50µ Signal #2 Info : 30M x 0.32mm x 0.25µm

	Compound	RT#1	RT#2	Resp#1	Resp#2	ng/ml	ng/ml
42)	L9 AR-1268-2	8.869	7.708	277115	403176	2.761	3.211
43)	L9 AR-1268-3	9.042f	7.915	131110	832890	1.311	6.779 #
44)	L9 AR-1268-4	9.549	8.207	165703	218756	5.936	5.736
45)	L9 AR-1268-5	9.970	8.510	146539	97522	0.604	0.313 #

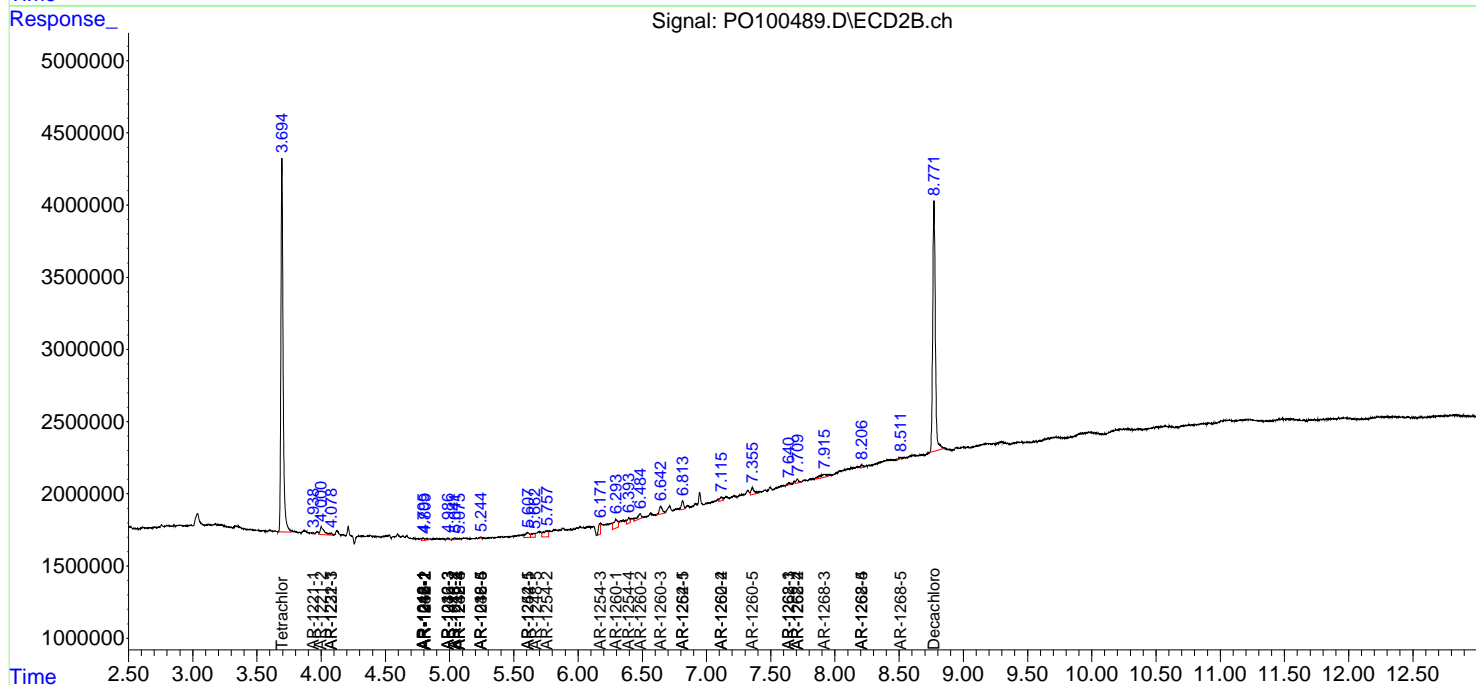
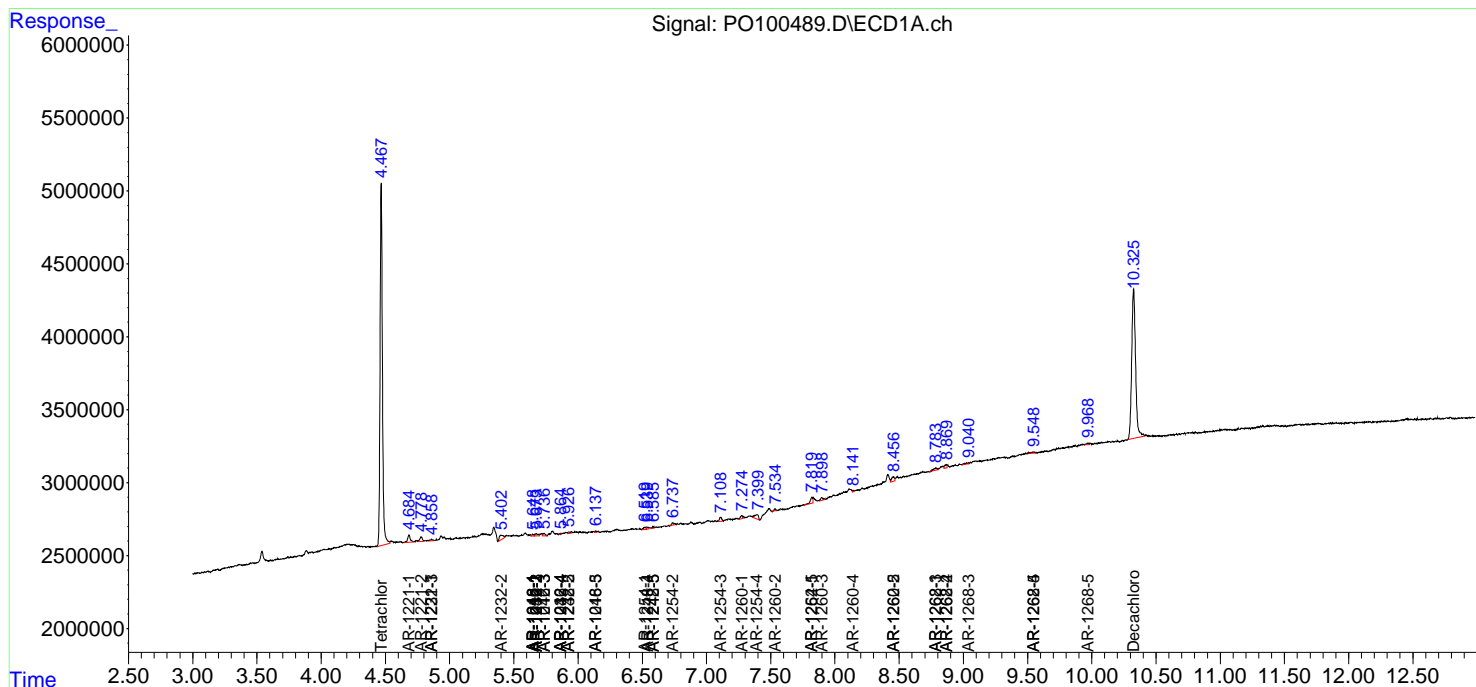
(f)=RT Delta > 1/2 Window (#)=Amounts differ by > 25% (m)=manual int.

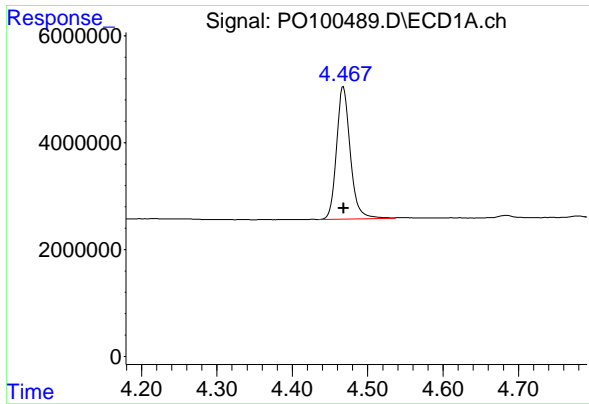
Data Path : Z:\pestpcbsrv\HPCHEM1\ECD_O\Data\PO121423\
 Data File : PO100489.D
 Signal(s) : Signal #1: ECD1A.ch Signal #2: ECD2B.ch
 Acq On : 14 Dec 2023 15:29
 Operator : YP/AJ
 Sample : 05804-01
 Misc :
 ALS Vial : 13 Sample Multiplier: 1

Instrument :
 ECD_O
 ClientSampleId :
 FENCE-POST-CONCRETE

Integration File signal 1: autoint1.e
 Integration File signal 2: autoint2.e
 Quant Time: Dec 14 23:22:53 2023
 Quant Method : Z:\pestpcbsrv\HPCHEM1\ECD_O\methods\PO121323.M
 Quant Title : GC EXTRACTABLES
 QLast Update : Thu Dec 14 05:06:46 2023
 Response via : Initial Calibration
 Integrator: ChemStation

Volume Inj. : 2 µl
 Signal #1 Phase : ZB-MR1 Signal #2 Phase: ZB-MR2
 Signal #1 Info : 30Mx0.32mmx 0.50µm Signal #2 Info : 30M x 0.32mm x 0.25µm

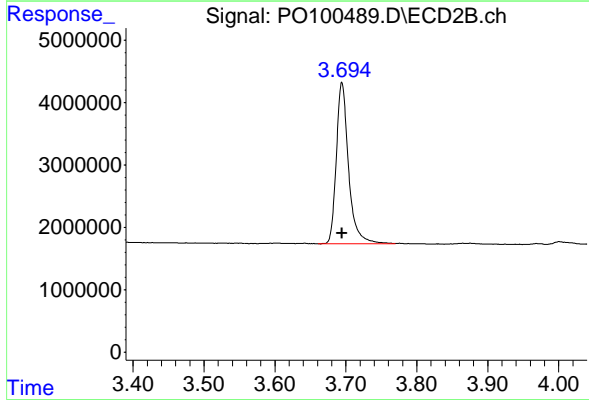




#1 Tetrachloro-m-xylene

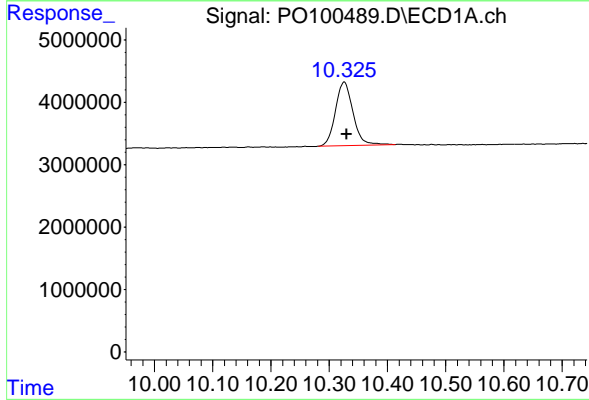
R.T.: 4.468 min
 Delta R.T.: 0.000 min
 Response: 31665788
 Conc: 20.69 ng/ml

Instrument :
 ECD_O
 ClientSampleId :
 FENCE-POST-CONCRETE



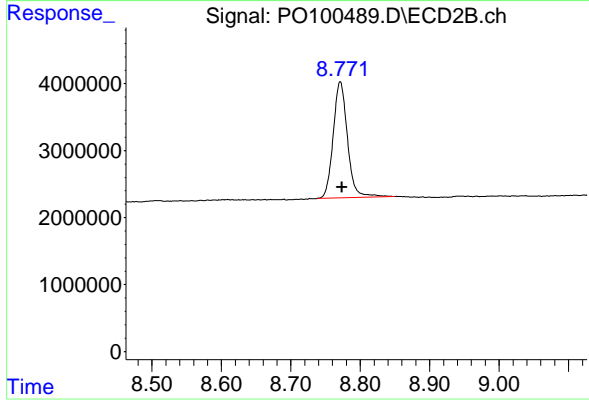
#1 Tetrachloro-m-xylene

R.T.: 3.694 min
 Delta R.T.: 0.000 min
 Response: 30954385
 Conc: 20.94 ng/ml



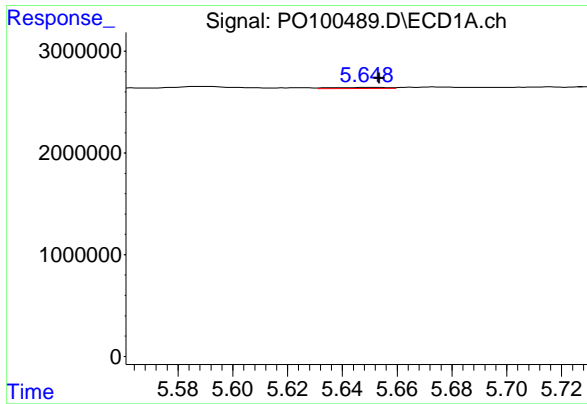
#2 Decachlorobiphenyl

R.T.: 10.326 min
 Delta R.T.: -0.004 min
 Response: 21382890
 Conc: 22.69 ng/ml



#2 Decachlorobiphenyl

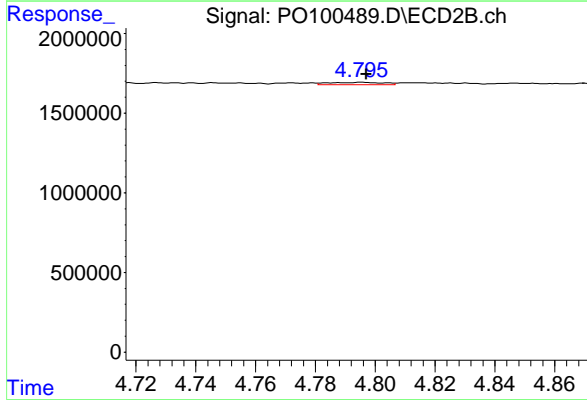
R.T.: 8.771 min
 Delta R.T.: -0.003 min
 Response: 24751508
 Conc: 23.19 ng/ml



#3 AR-1016-1

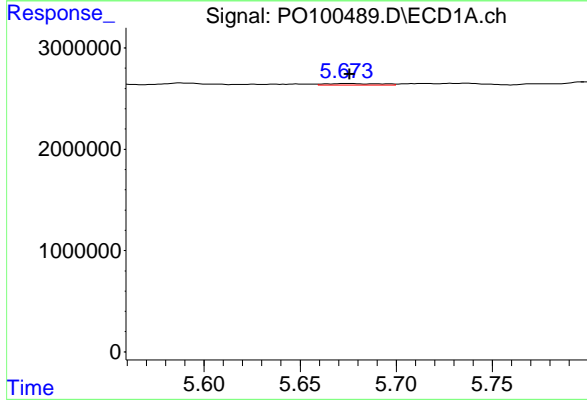
R.T.: 5.649 min
 Delta R.T.: -0.005 min
 Response: 147821
 Conc: 3.70 ng/ml

Instrument :
 ECD_O
 ClientSampleId :
 FENCE-POST-CONCRETE



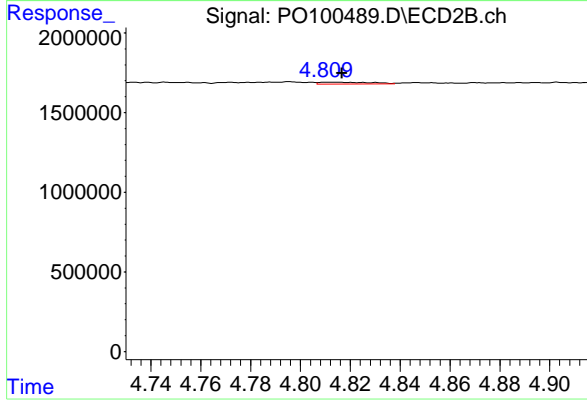
#3 AR-1016-1

R.T.: 4.795 min
 Delta R.T.: -0.002 min
 Response: 190597
 Conc: 6.52 ng/ml



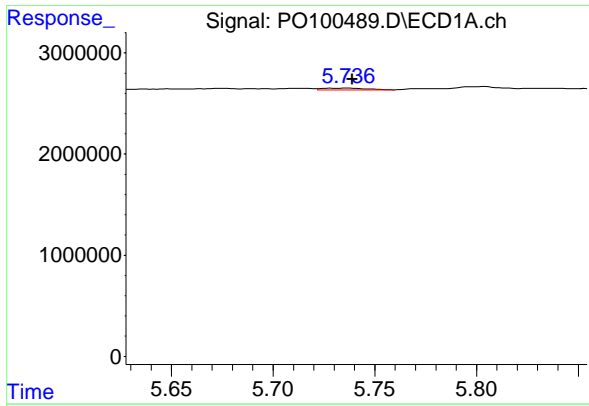
#4 AR-1016-2

R.T.: 5.674 min
 Delta R.T.: -0.002 min
 Response: 287399
 Conc: 4.71 ng/ml



#4 AR-1016-2

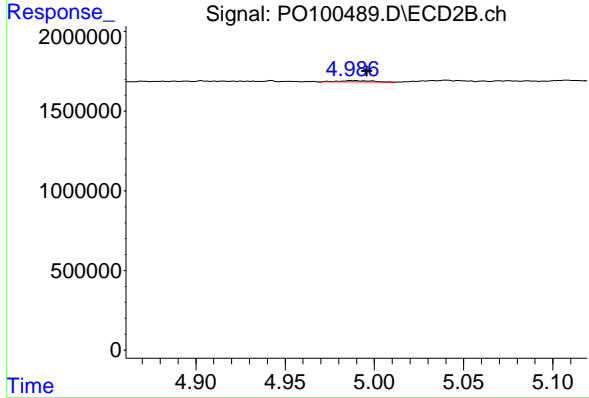
R.T.: 4.815 min
 Delta R.T.: -0.002 min
 Response: 158914
 Conc: 3.89 ng/ml



#5 AR-1016-3

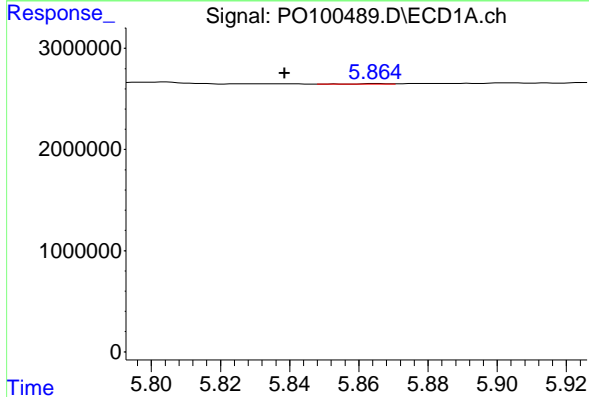
R.T.: 5.737 min
 Delta R.T.: -0.002 min
 Response: 238234
 Conc: 6.29 ng/ml

Instrument :
 ECD_O
 ClientSampleId :
 FENCE-POST-CONCRETE



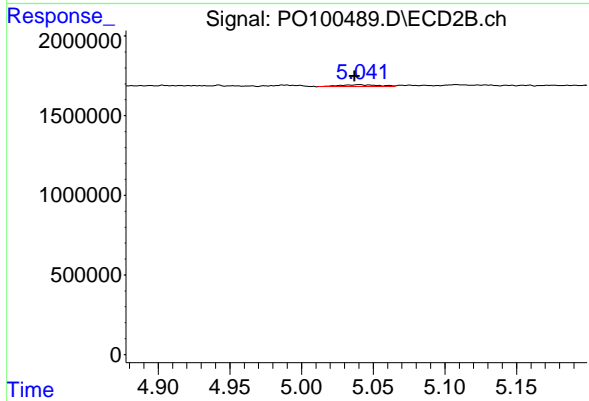
#5 AR-1016-3

R.T.: 4.988 min
 Delta R.T.: -0.008 min
 Response: 111860
 Conc: 5.21 ng/ml



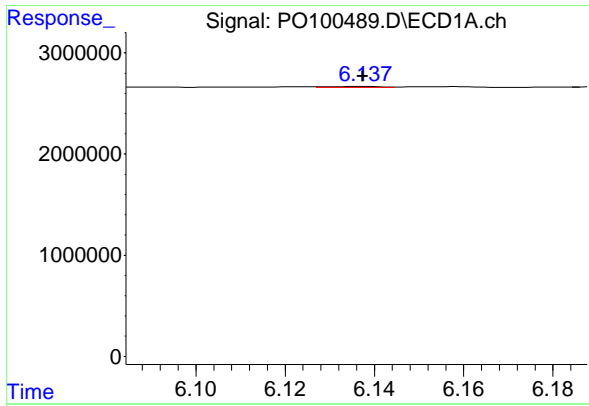
#6 AR-1016-4

R.T.: 5.865 min
 Delta R.T.: 0.026 min
 Response: 31057
 Conc: 1.07 ng/ml



#6 AR-1016-4

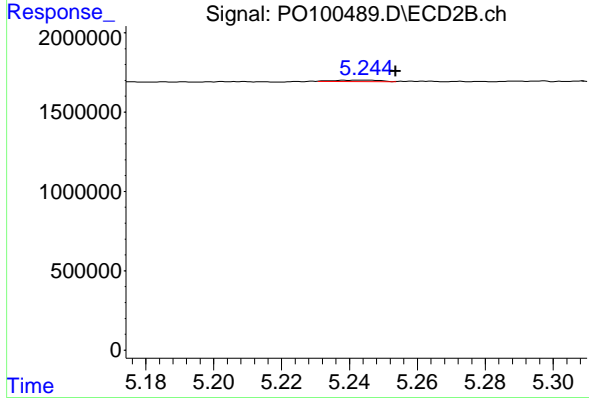
R.T.: 5.040 min
 Delta R.T.: 0.003 min
 Response: 212227
 Conc: 11.15 ng/ml



#7 AR-1016-5

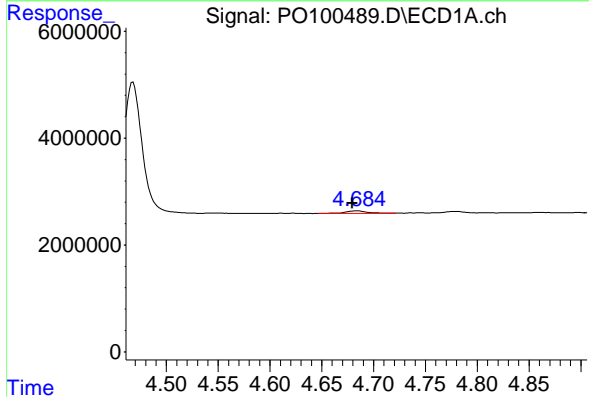
R.T.: 6.138 min
 Delta R.T.: 0.000 min
 Response: 62836
 Conc: 1.91 ng/ml

Instrument :
 ECD_O
 ClientSampleId :
 FENCE-POST-CONCRETE



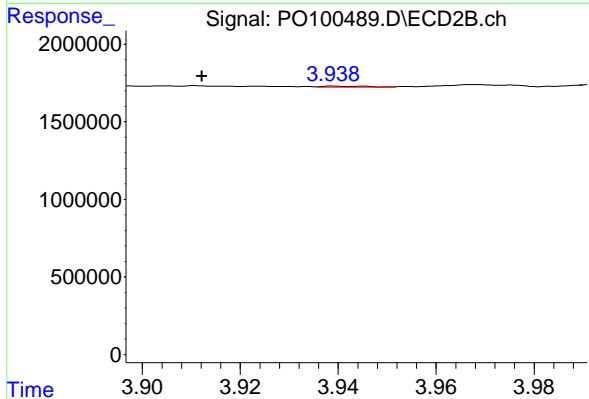
#7 AR-1016-5

R.T.: 5.244 min
 Delta R.T.: -0.010 min
 Response: 74636
 Conc: 3.30 ng/ml



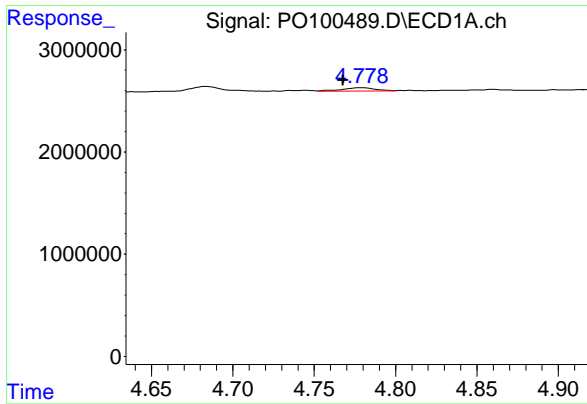
#8 AR-1221-1

R.T.: 4.684 min
 Delta R.T.: 0.004 min
 Response: 728864
 Conc: 45.12 ng/ml



#8 AR-1221-1

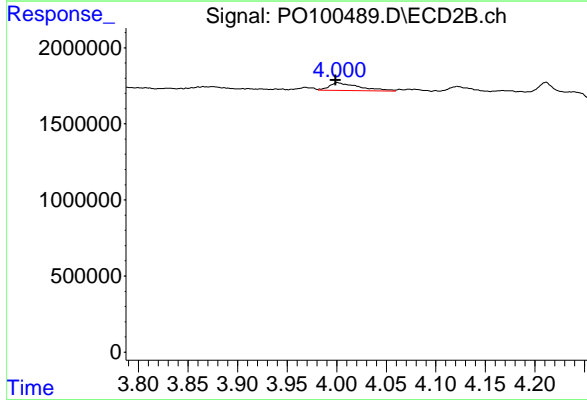
R.T.: 3.939 min
 Delta R.T.: 0.027 min
 Response: 35701
 Conc: 2.21 ng/ml



#9 AR-1221-2

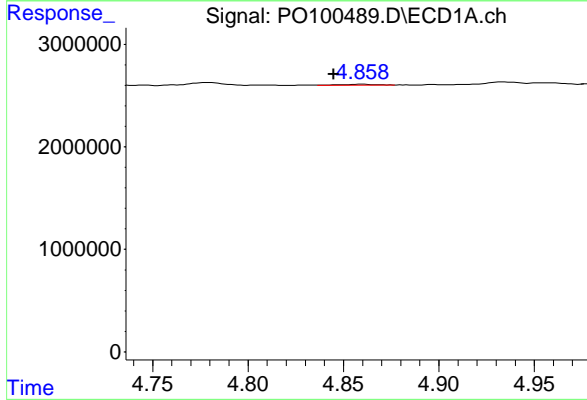
R.T.: 4.779 min
 Delta R.T.: 0.011 min
 Response: 446764
 Conc: 37.84 ng/ml

Instrument :
 ECD_O
 ClientSampleId :
 FENCE-POST-CONCRETE



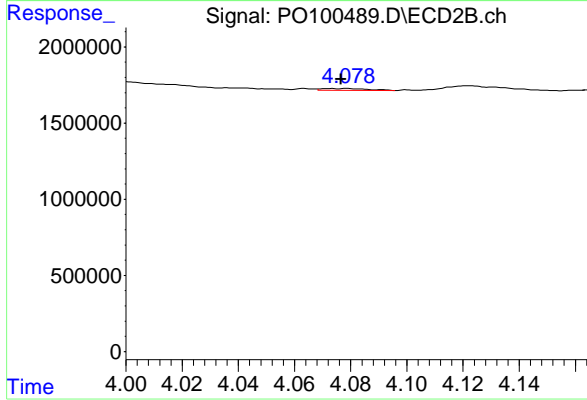
#9 AR-1221-2

R.T.: 4.001 min
 Delta R.T.: 0.002 min
 Response: 1075475
 Conc: 91.35 ng/ml



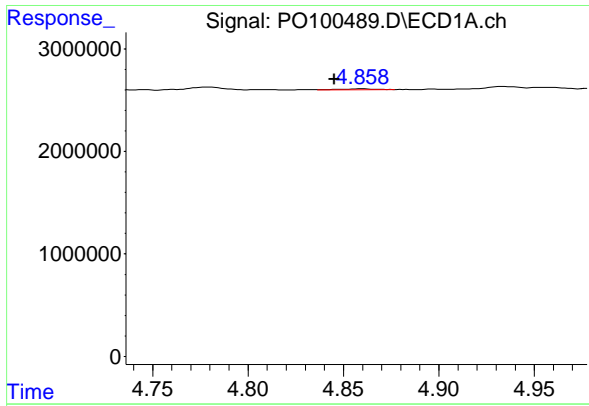
#10 AR-1221-3

R.T.: 4.860 min
 Delta R.T.: 0.015 min
 Response: 126000
 Conc: 3.34 ng/ml



#10 AR-1221-3

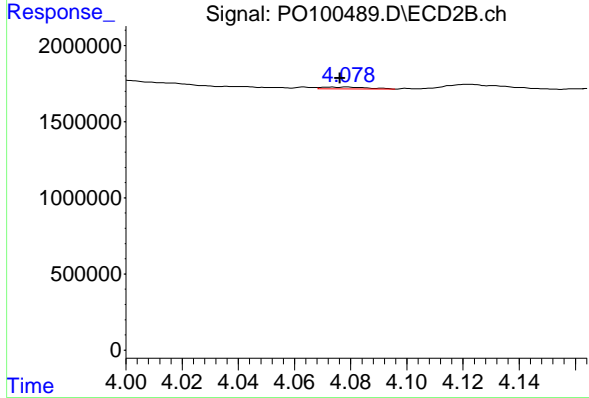
R.T.: 4.079 min
 Delta R.T.: 0.002 min
 Response: 141057
 Conc: 4.13 ng/ml



#11 AR-1232-1

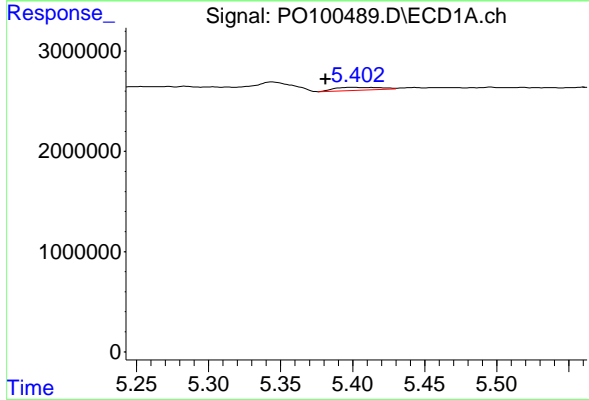
R.T.: 4.860 min
 Delta R.T.: 0.015 min
 Response: 126000
 Conc: 4.27 ng/ml

Instrument :
 ECD_O
 ClientSampleId :
 FENCE-POST-CONCRETE



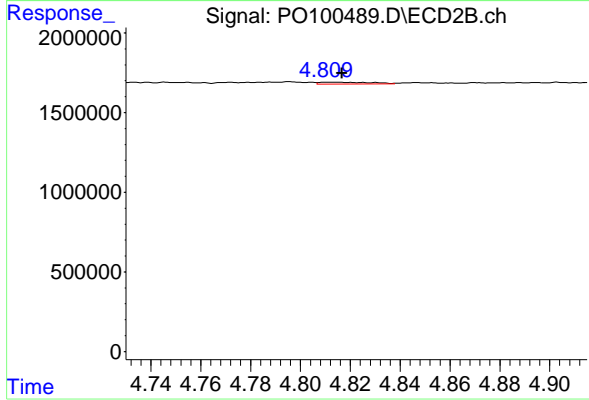
#11 AR-1232-1

R.T.: 4.079 min
 Delta R.T.: 0.003 min
 Response: 141057
 Conc: 5.16 ng/ml



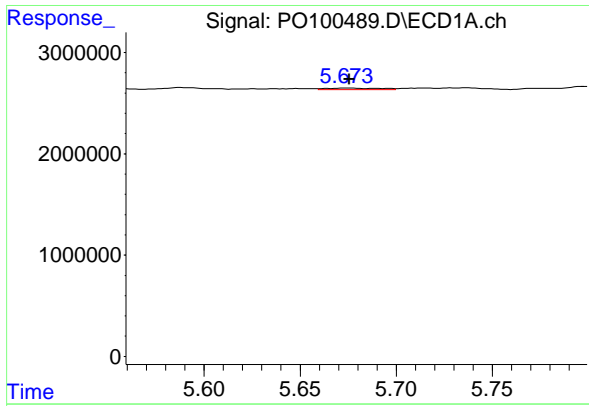
#12 AR-1232-2

R.T.: 5.401 min
 Delta R.T.: 0.020 min
 Response: 639535
 Conc: 36.95 ng/ml



#12 AR-1232-2

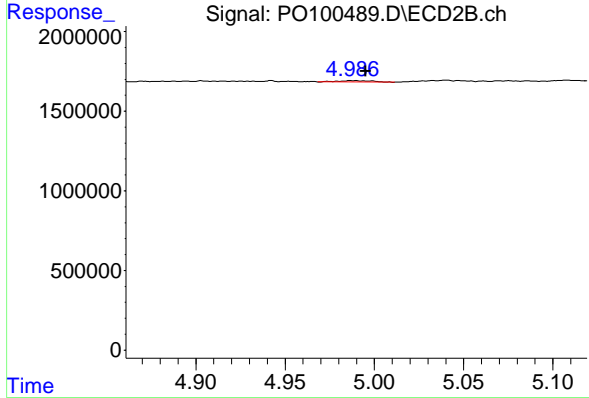
R.T.: 4.815 min
 Delta R.T.: -0.002 min
 Response: 158914
 Conc: 8.60 ng/ml



#13 AR-1232-3

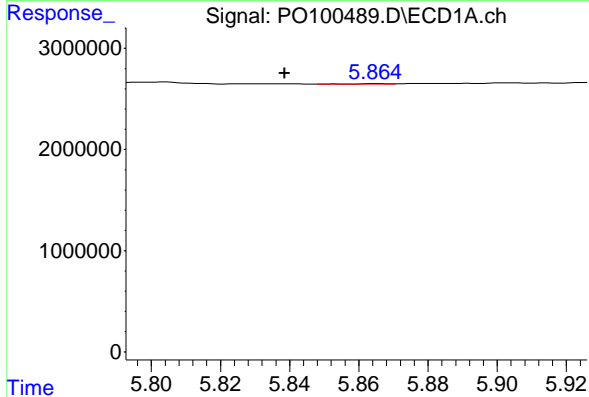
R.T.: 5.674 min
 Delta R.T.: -0.002 min
 Response: 287399
 Conc: 11.04 ng/ml

Instrument :
 ECD_O
 ClientSampleId :
 FENCE-POST-CONCRETE



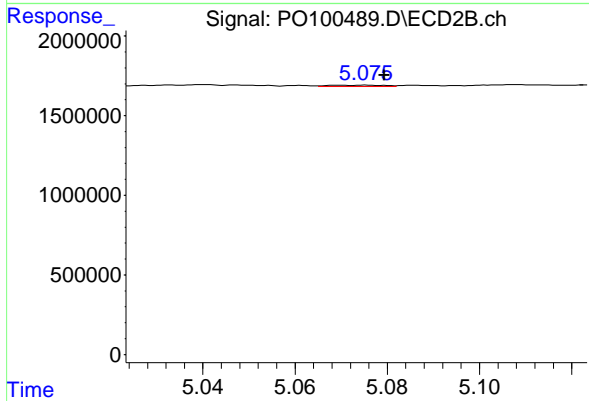
#13 AR-1232-3

R.T.: 4.988 min
 Delta R.T.: -0.008 min
 Response: 111860
 Conc: 11.87 ng/ml



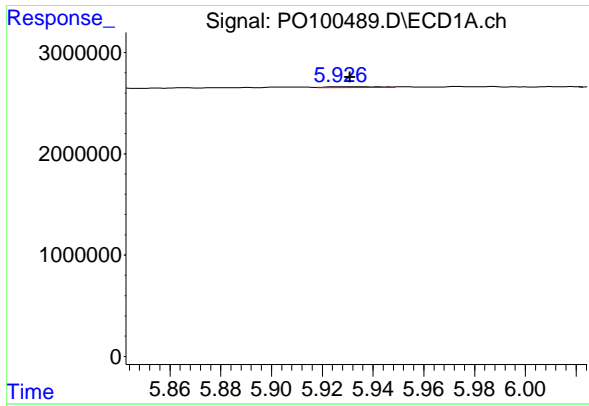
#14 AR-1232-4

R.T.: 5.865 min
 Delta R.T.: 0.026 min
 Response: 31057
 Conc: 2.57 ng/ml



#14 AR-1232-4

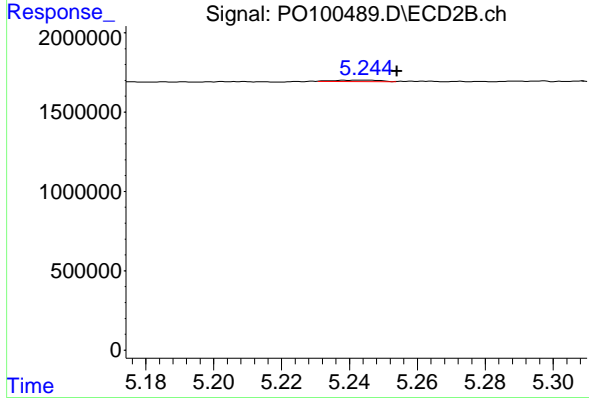
R.T.: 5.075 min
 Delta R.T.: -0.004 min
 Response: 62275
 Conc: 6.68 ng/ml



#15 AR-1232-5

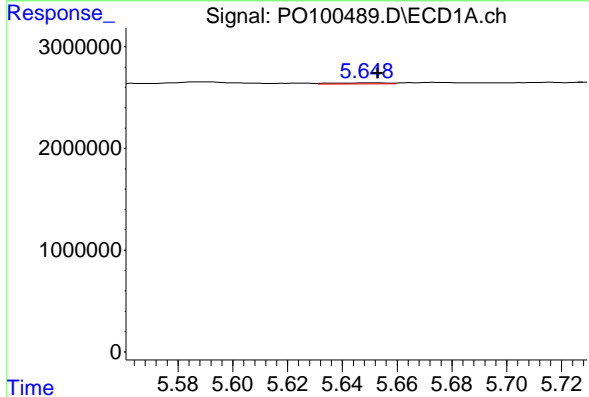
R.T.: 5.927 min
 Delta R.T.: -0.004 min
 Response: 141845
 Conc: 12.32 ng/ml

Instrument :
 ECD_O
 ClientSampleId :
 FENCE-POST-CONCRETE



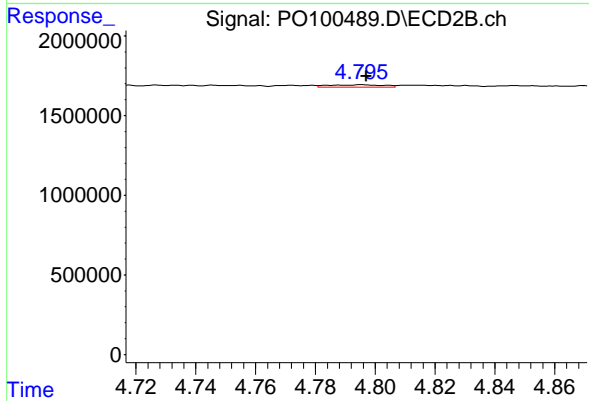
#15 AR-1232-5

R.T.: 5.244 min
 Delta R.T.: -0.010 min
 Response: 74636
 Conc: 7.99 ng/ml



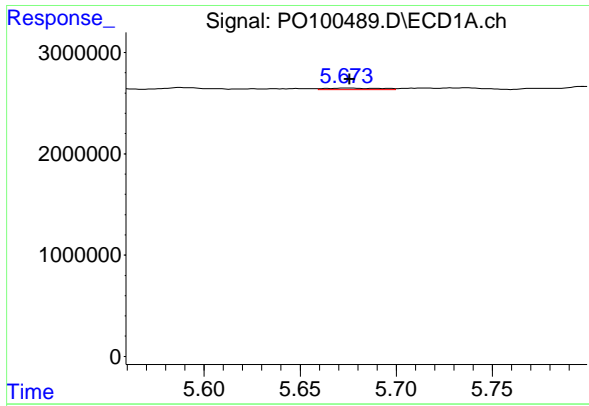
#16 AR-1242-1

R.T.: 5.649 min
 Delta R.T.: -0.004 min
 Response: 147821
 Conc: 4.67 ng/ml



#16 AR-1242-1

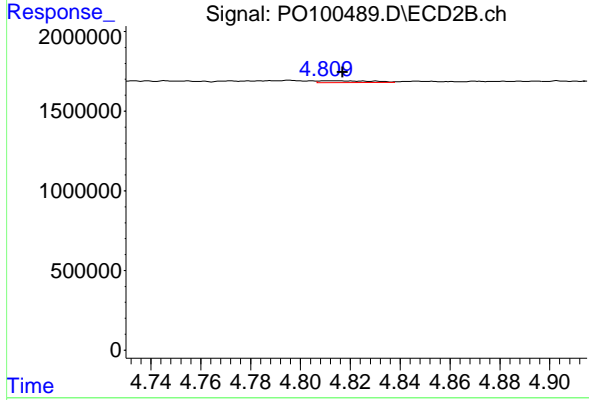
R.T.: 4.795 min
 Delta R.T.: -0.002 min
 Response: 190597
 Conc: 8.14 ng/ml



#17 AR-1242-2

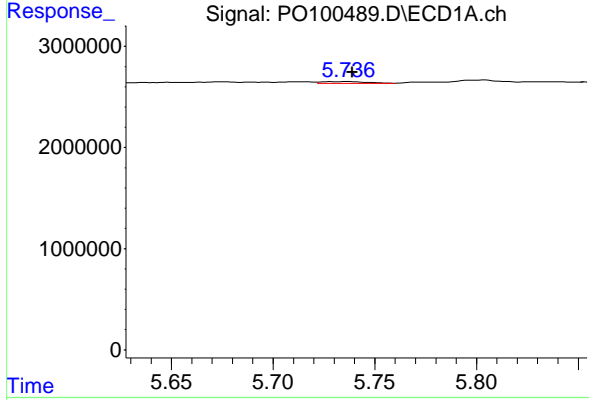
R.T.: 5.674 min
 Delta R.T.: -0.002 min
 Response: 287399
 Conc: 6.00 ng/ml

Instrument :
 ECD_O
 ClientSampleId :
 FENCE-POST-CONCRETE



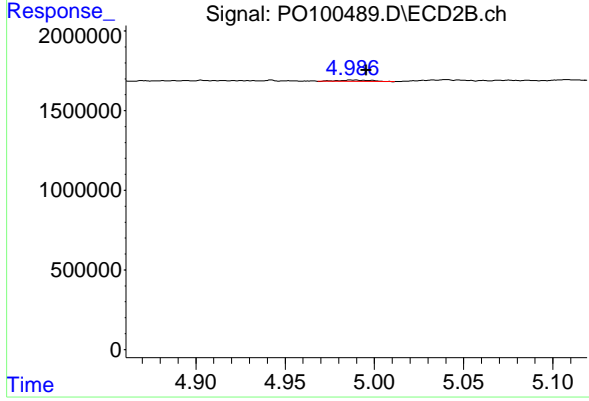
#17 AR-1242-2

R.T.: 4.815 min
 Delta R.T.: -0.002 min
 Response: 158914
 Conc: 4.87 ng/ml



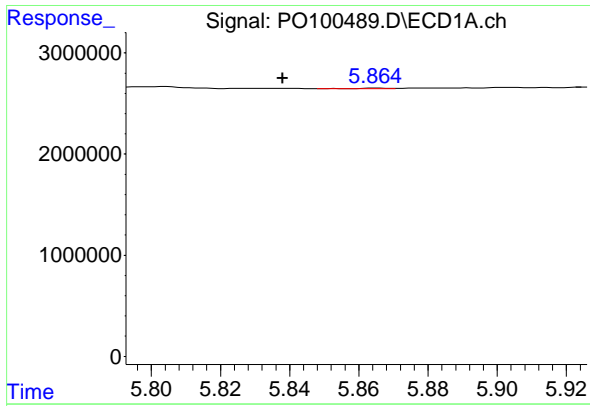
#18 AR-1242-3

R.T.: 5.737 min
 Delta R.T.: -0.002 min
 Response: 238234
 Conc: 8.00 ng/ml



#18 AR-1242-3

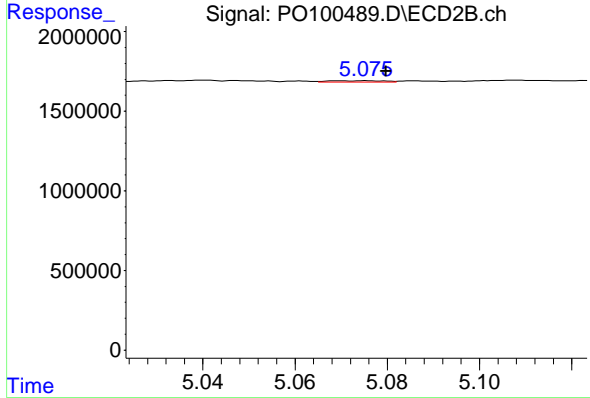
R.T.: 4.988 min
 Delta R.T.: -0.008 min
 Response: 111860
 Conc: 6.43 ng/ml



#19 AR-1242-4

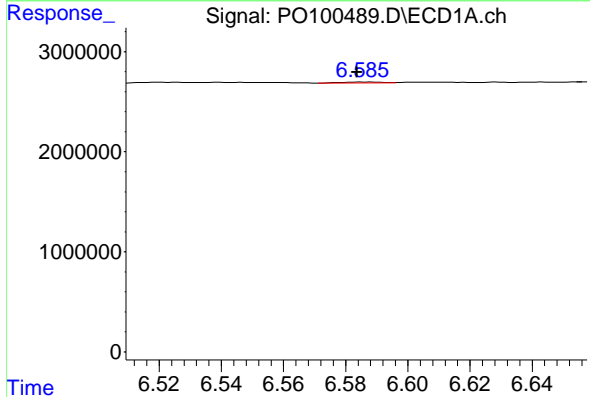
R.T.: 5.865 min
 Delta R.T.: 0.027 min
 Response: 31057
 Conc: 1.39 ng/ml

Instrument :
 ECD_O
 ClientSampleId :
 FENCE-POST-CONCRETE



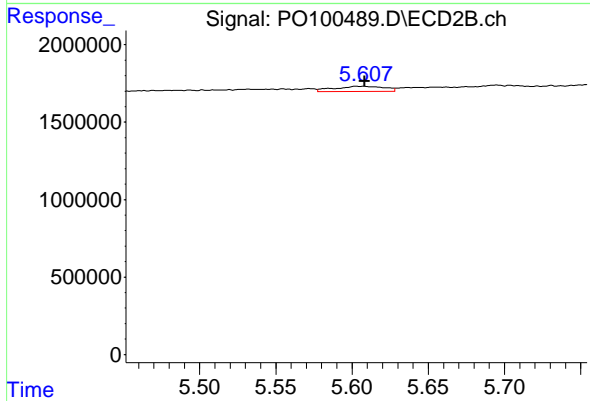
#19 AR-1242-4

R.T.: 5.075 min
 Delta R.T.: -0.005 min
 Response: 62275
 Conc: 3.31 ng/ml



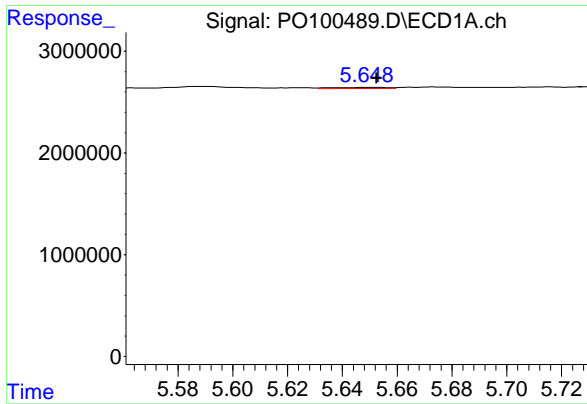
#20 AR-1242-5

R.T.: 6.588 min
 Delta R.T.: 0.004 min
 Response: 94757
 Conc: 4.53 ng/ml



#20 AR-1242-5

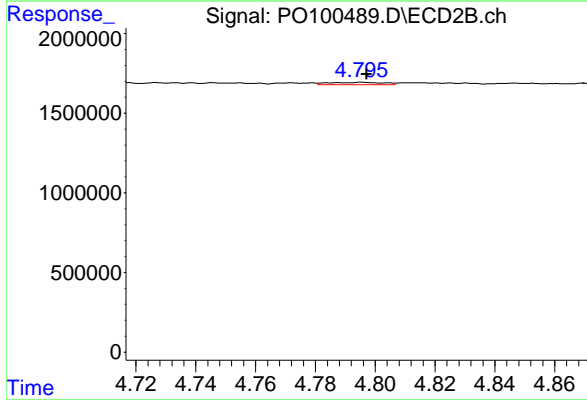
R.T.: 5.607 min
 Delta R.T.: 0.000 min
 Response: 749578
 Conc: 34.10 ng/ml



#21 AR-1248-1

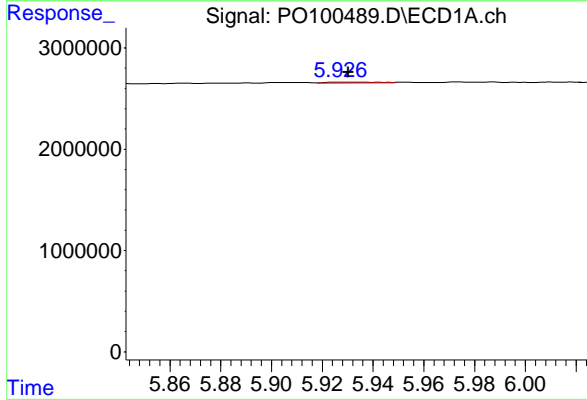
R.T.: 5.649 min
 Delta R.T.: -0.004 min
 Response: 147821
 Conc: 6.58 ng/ml

Instrument :
 ECD_O
 ClientSampleId :
 FENCE-POST-CONCRETE



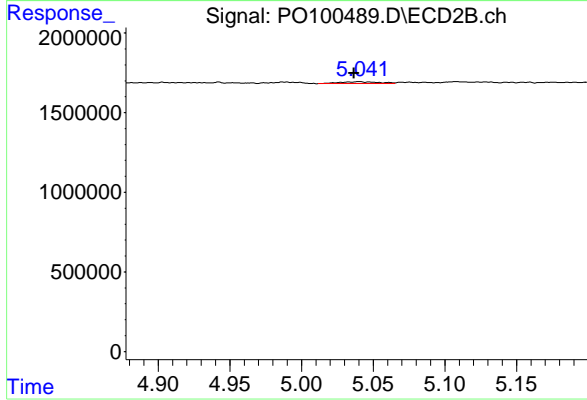
#21 AR-1248-1

R.T.: 4.795 min
 Delta R.T.: -0.002 min
 Response: 190597
 Conc: 10.75 ng/ml



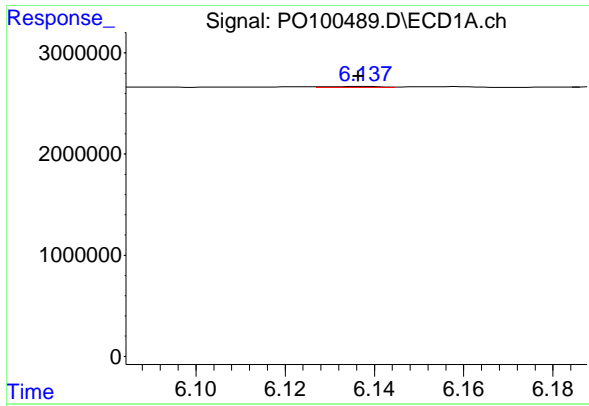
#22 AR-1248-2

R.T.: 5.927 min
 Delta R.T.: -0.003 min
 Response: 141845
 Conc: 3.45 ng/ml



#22 AR-1248-2

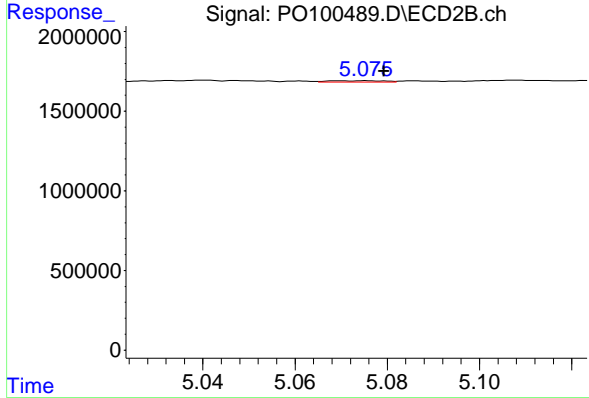
R.T.: 5.040 min
 Delta R.T.: 0.004 min
 Response: 212227
 Conc: 8.05 ng/ml



#23 AR-1248-3

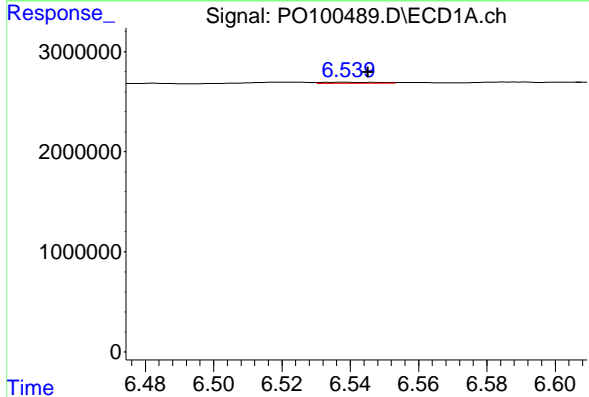
R.T.: 6.138 min
 Delta R.T.: 0.001 min
 Response: 62836
 Conc: 1.46 ng/ml

Instrument :
 ECD_O
 ClientSampleId :
 FENCE-POST-CONCRETE



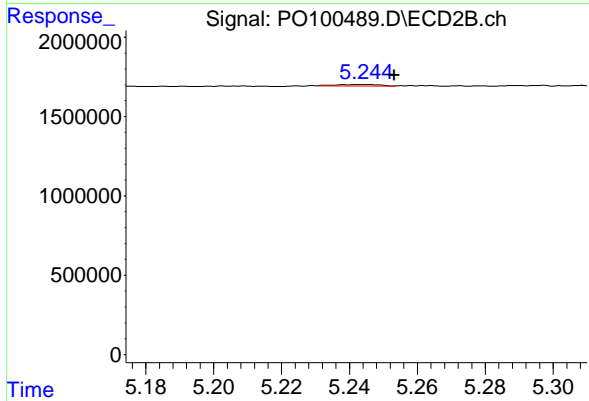
#23 AR-1248-3

R.T.: 5.075 min
 Delta R.T.: -0.004 min
 Response: 62275
 Conc: 2.29 ng/ml



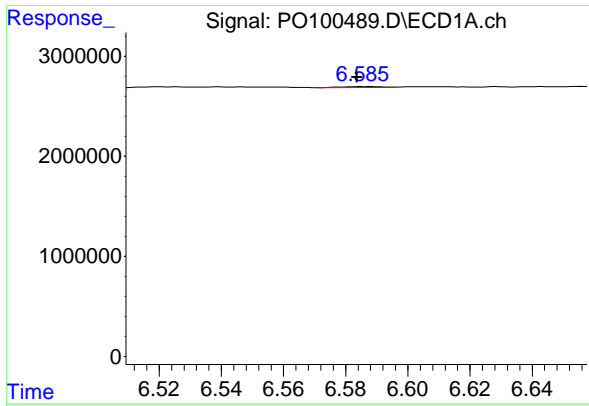
#24 AR-1248-4

R.T.: 6.539 min
 Delta R.T.: -0.006 min
 Response: 142246
 Conc: 4.00 ng/ml



#24 AR-1248-4

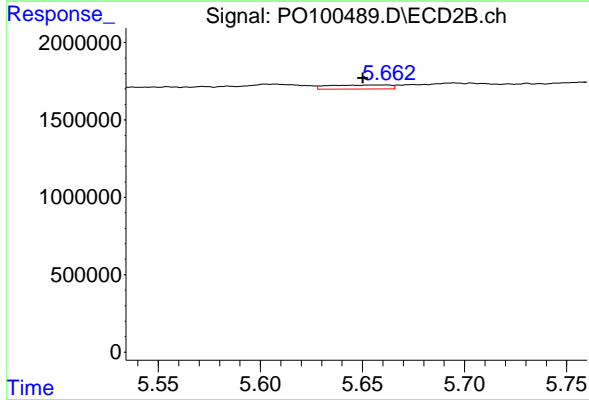
R.T.: 5.244 min
 Delta R.T.: -0.009 min
 Response: 74636
 Conc: 2.51 ng/ml



#25 AR-1248-5

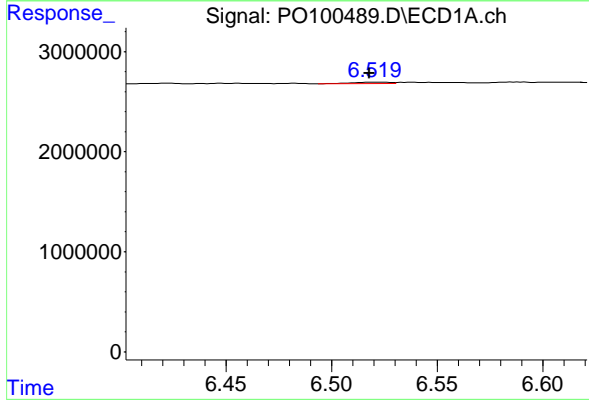
R.T.: 6.588 min
 Delta R.T.: 0.004 min
 Response: 94757
 Conc: 2.79 ng/ml

Instrument :
 ECD_O
 ClientSampleId :
 FENCE-POST-CONCRETE



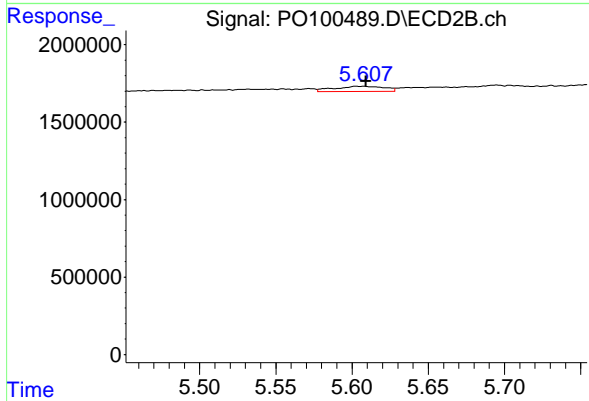
#25 AR-1248-5

R.T.: 5.662 min
 Delta R.T.: 0.011 min
 Response: 547626
 Conc: 21.19 ng/ml



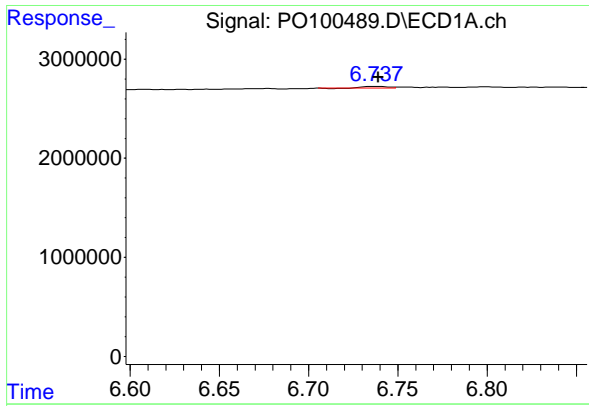
#26 AR-1254-1

R.T.: 6.520 min
 Delta R.T.: 0.002 min
 Response: 196222
 Conc: 4.13 ng/ml



#26 AR-1254-1

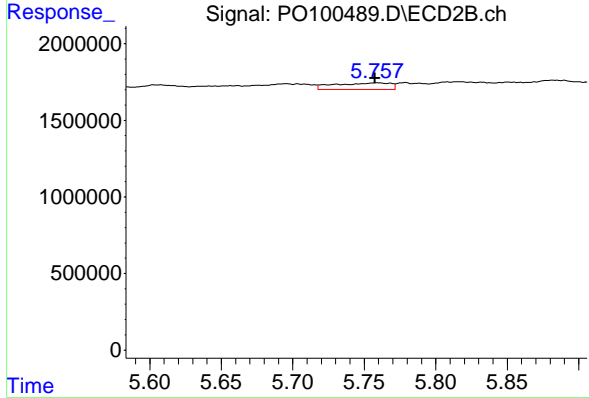
R.T.: 5.607 min
 Delta R.T.: -0.002 min
 Response: 749578
 Conc: 16.88 ng/ml



#27 AR-1254-2

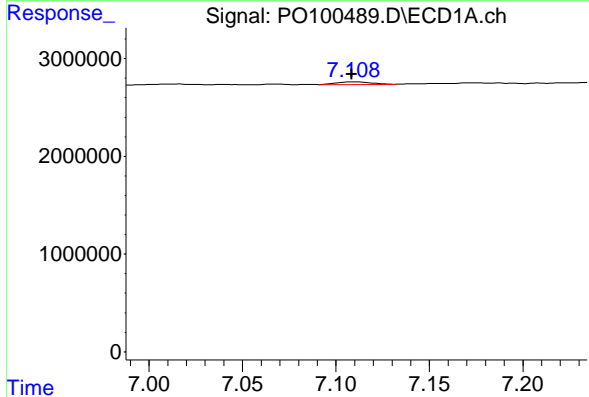
R.T.: 6.738 min
 Delta R.T.: -0.001 min
 Response: 129201
 Conc: 1.92 ng/ml

Instrument :
 ECD_O
 ClientSampleId :
 FENCE-POST-CONCRETE



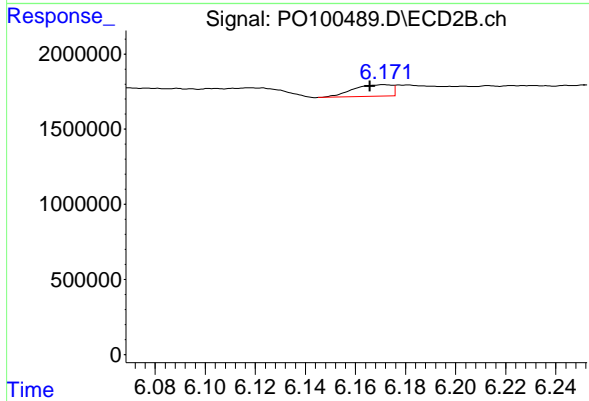
#27 AR-1254-2

R.T.: 5.759 min
 Delta R.T.: 0.002 min
 Response: 1159048
 Conc: 28.75 ng/ml



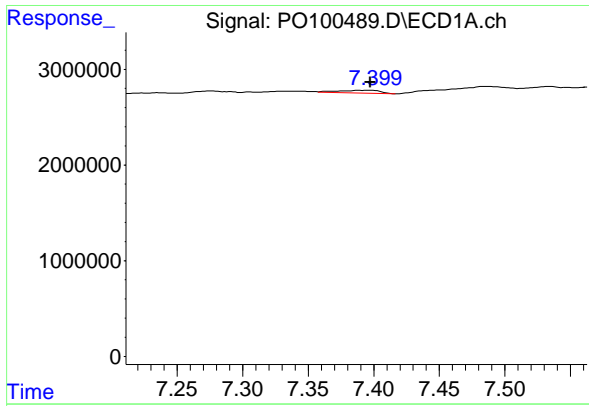
#28 AR-1254-3

R.T.: 7.109 min
 Delta R.T.: 0.000 min
 Response: 354531
 Conc: 5.77 ng/ml



#28 AR-1254-3

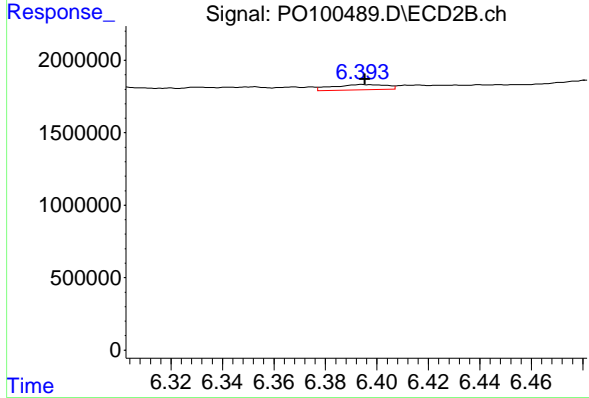
R.T.: 6.172 min
 Delta R.T.: 0.006 min
 Response: 842684
 Conc: 14.92 ng/ml



#29 AR-1254-4

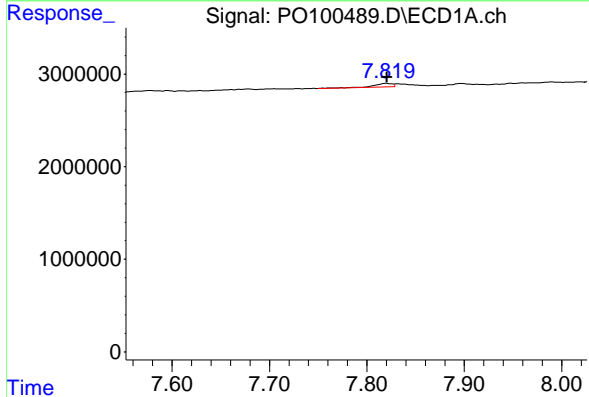
R.T.: 7.389 min
 Delta R.T.: -0.008 min
 Response: 651944
 Conc: 20.61 ng/ml

Instrument :
 ECD_O
 ClientSampleId :
 FENCE-POST-CONCRETE



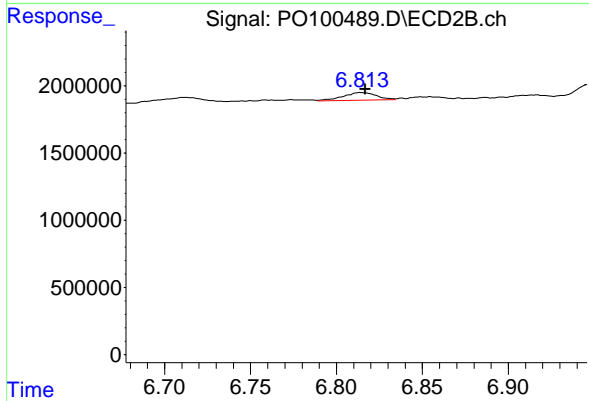
#29 AR-1254-4

R.T.: 6.394 min
 Delta R.T.: -0.001 min
 Response: 520869
 Conc: 15.62 ng/ml



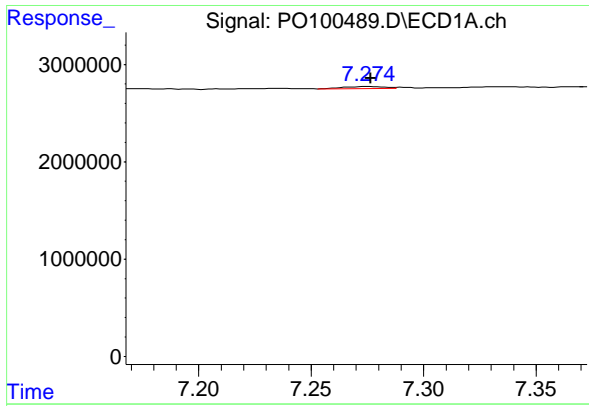
#30 AR-1254-5

R.T.: 7.820 min
 Delta R.T.: 0.000 min
 Response: 548802
 Conc: 13.39 ng/ml



#30 AR-1254-5

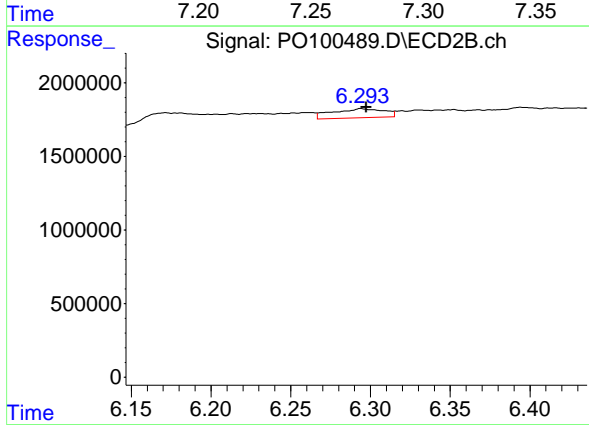
R.T.: 6.814 min
 Delta R.T.: -0.003 min
 Response: 775032
 Conc: 13.49 ng/ml



#31 AR-1260-1

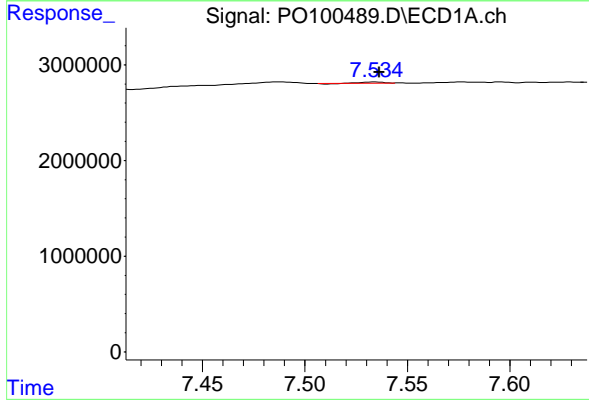
R.T.: 7.275 min
 Delta R.T.: -0.001 min
 Response: 253748
 Conc: 4.44 ng/ml

Instrument :
 ECD_O
 ClientSampleId :
 FENCE-POST-CONCRETE



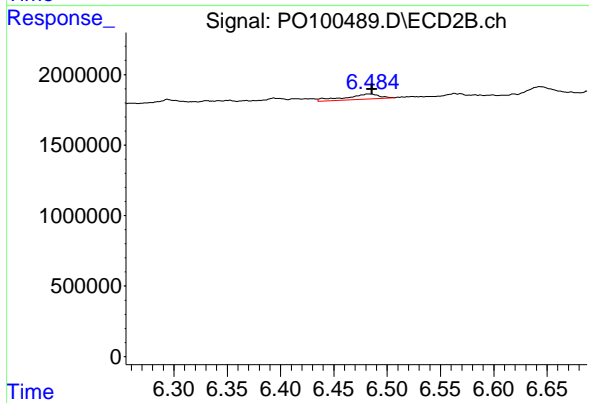
#31 AR-1260-1

R.T.: 6.294 min
 Delta R.T.: -0.003 min
 Response: 1383529
 Conc: 25.67 ng/ml



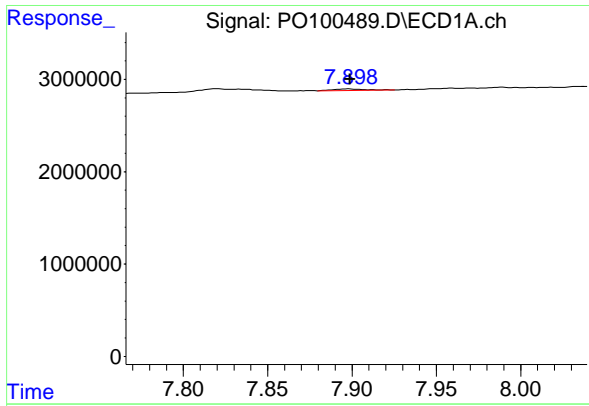
#32 AR-1260-2

R.T.: 7.534 min
 Delta R.T.: -0.002 min
 Response: 98291
 Conc: 1.73 ng/ml



#32 AR-1260-2

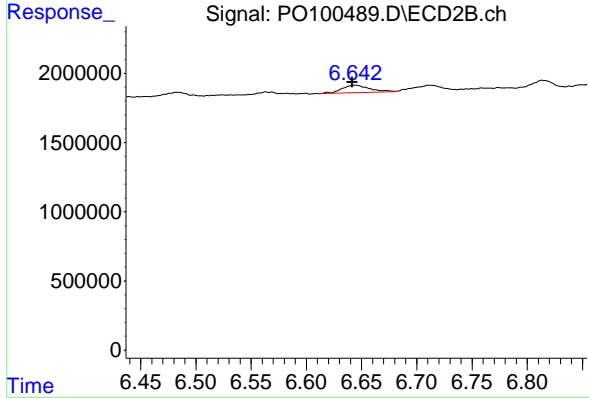
R.T.: 6.484 min
 Delta R.T.: -0.002 min
 Response: 798656
 Conc: 13.06 ng/ml



#33 AR-1260-3

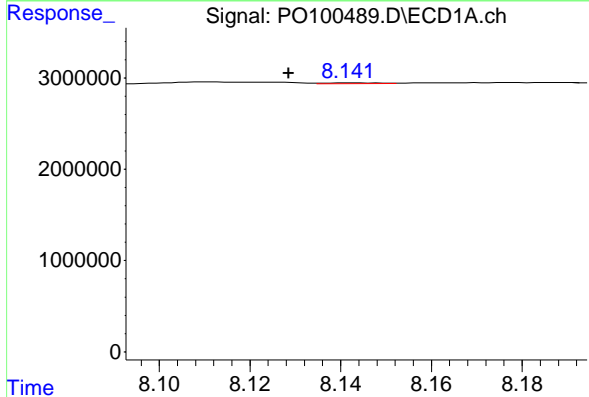
R.T.: 7.898 min
 Delta R.T.: 0.000 min
 Response: 259915
 Conc: 5.18 ng/ml

Instrument :
 ECD_O
 ClientSampleId :
 FENCE-POST-CONCRETE



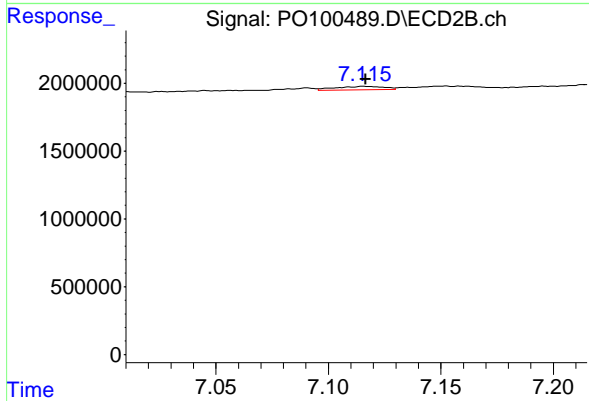
#33 AR-1260-3

R.T.: 6.644 min
 Delta R.T.: 0.002 min
 Response: 934589
 Conc: 14.19 ng/ml



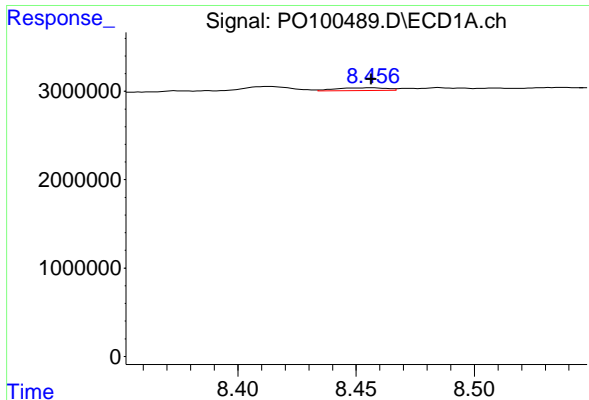
#34 AR-1260-4

R.T.: 8.142 min
 Delta R.T.: 0.014 min
 Response: 78818
 Conc: 1.44 ng/ml



#34 AR-1260-4

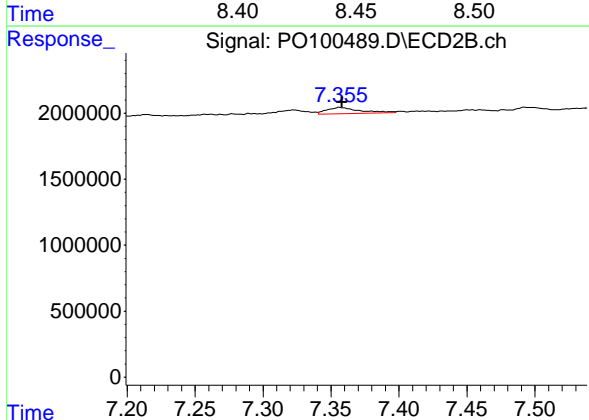
R.T.: 7.116 min
 Delta R.T.: 0.000 min
 Response: 392683
 Conc: 7.27 ng/ml



#35 AR-1260-5

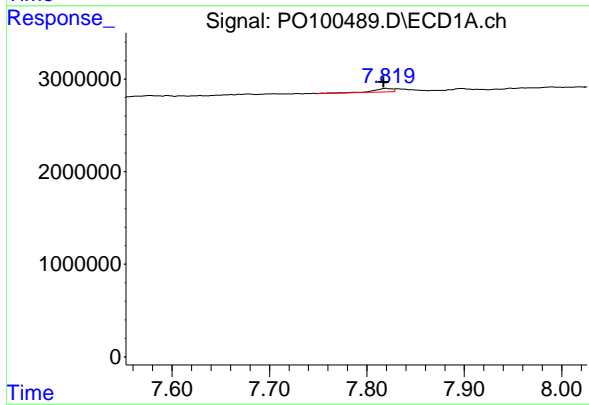
R.T.: 8.457 min
 Delta R.T.: 0.000 min
 Response: 457337
 Conc: 5.08 ng/ml

Instrument :
 ECD_O
 ClientSampleId :
 FENCE-POST-CONCRETE



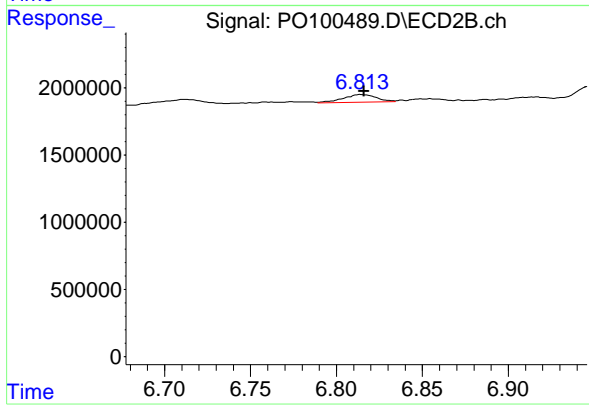
#35 AR-1260-5

R.T.: 7.356 min
 Delta R.T.: -0.002 min
 Response: 799486
 Conc: 6.97 ng/ml



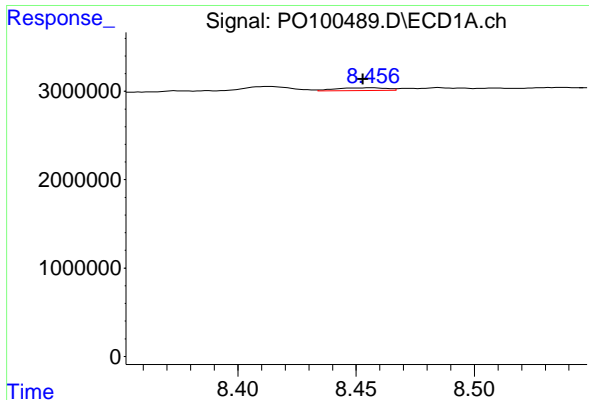
#36 AR-1262-1

R.T.: 7.820 min
 Delta R.T.: 0.003 min
 Response: 548802
 Conc: 15.56 ng/ml



#36 AR-1262-1

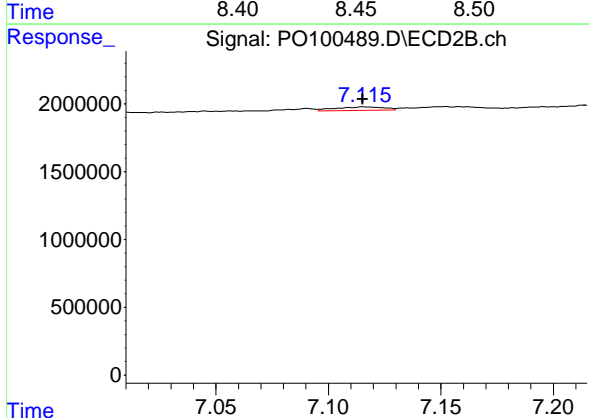
R.T.: 6.814 min
 Delta R.T.: -0.002 min
 Response: 775032
 Conc: 25.24 ng/ml



#37 AR-1262-2

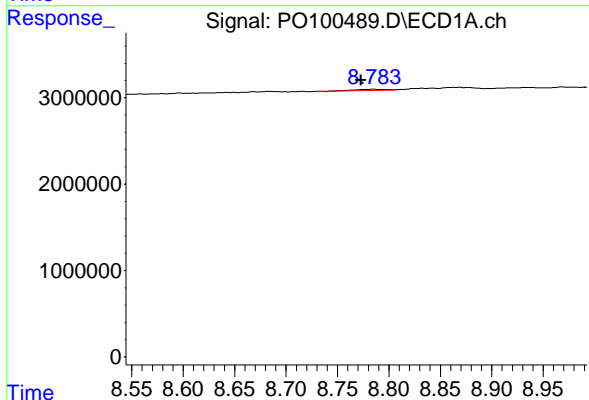
R.T.: 8.457 min
 Delta R.T.: 0.004 min
 Response: 457337
 Conc: 5.24 ng/ml

Instrument :
 ECD_O
 ClientSampleId :
 FENCE-POST-CONCRETE



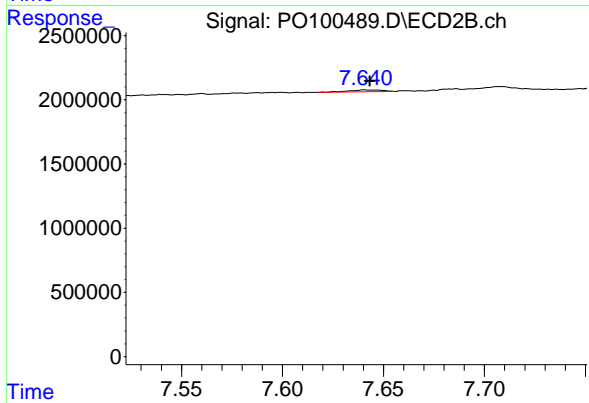
#37 AR-1262-2

R.T.: 7.116 min
 Delta R.T.: 0.000 min
 Response: 392683
 Conc: 6.06 ng/ml



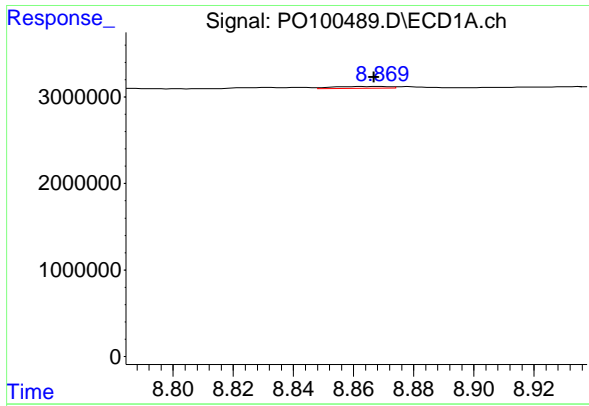
#38 AR-1262-3

R.T.: 8.785 min
 Delta R.T.: 0.012 min
 Response: 289355
 Conc: 4.70 ng/ml



#38 AR-1262-3

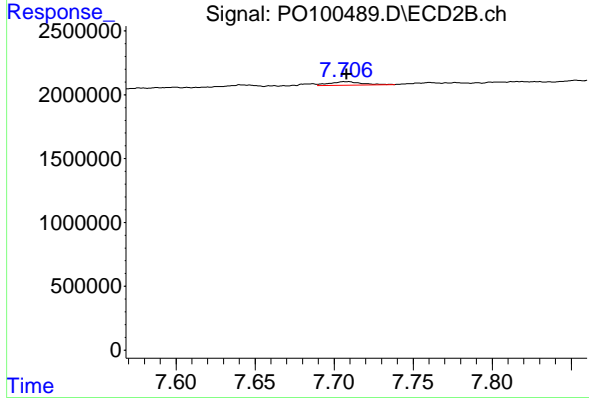
R.T.: 7.641 min
 Delta R.T.: -0.002 min
 Response: 160783
 Conc: 3.25 ng/ml



#39 AR-1262-4

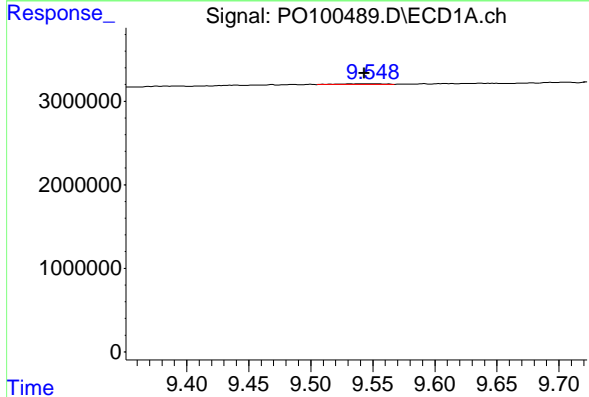
R.T.: 8.869 min
 Delta R.T.: 0.002 min
 Response: 277115
 Conc: 5.74 ng/ml

Instrument :
 ECD_O
 ClientSampleId :
 FENCE-POST-CONCRETE



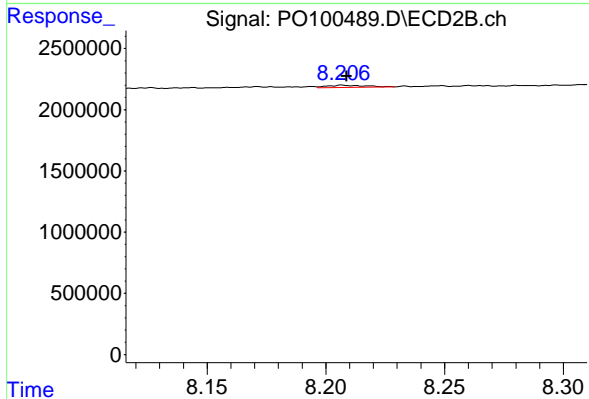
#39 AR-1262-4

R.T.: 7.708 min
 Delta R.T.: 0.000 min
 Response: 403176
 Conc: 4.71 ng/ml



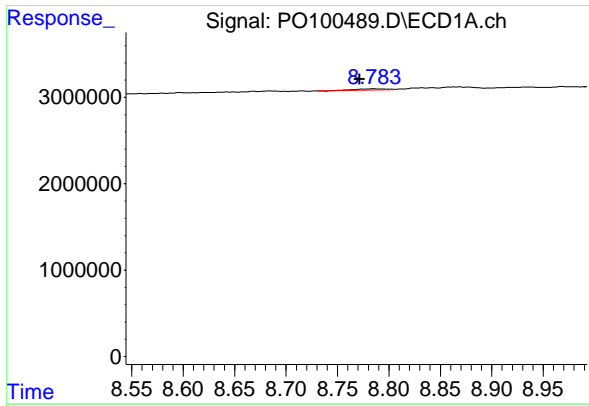
#40 AR-1262-5

R.T.: 9.549 min
 Delta R.T.: 0.005 min
 Response: 165703
 Conc: 6.34 ng/ml



#40 AR-1262-5

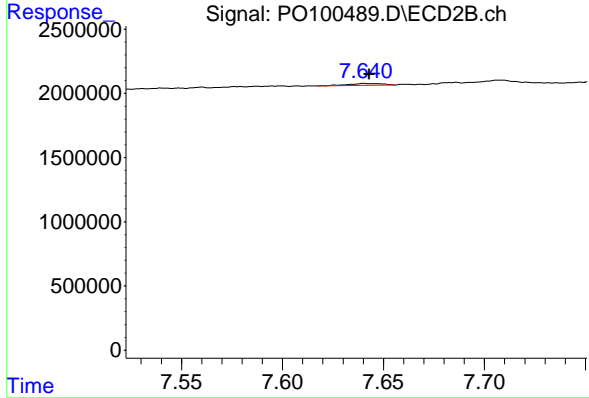
R.T.: 8.207 min
 Delta R.T.: -0.002 min
 Response: 218756
 Conc: 6.34 ng/ml



#41 AR-1268-1

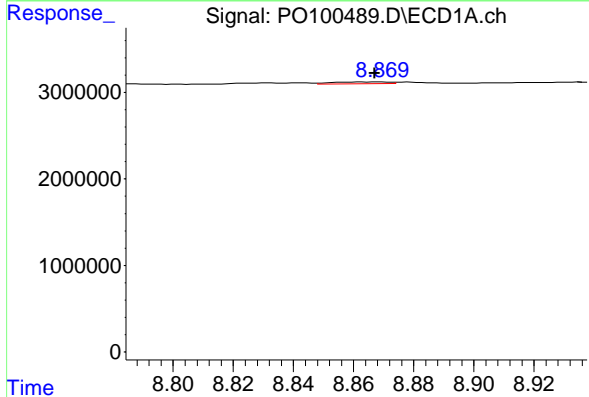
R.T.: 8.785 min
 Delta R.T.: 0.013 min
 Response: 289355
 Conc: 2.49 ng/ml

Instrument :
 ECD_O
 ClientSampleId :
 FENCE-POST-CONCRETE



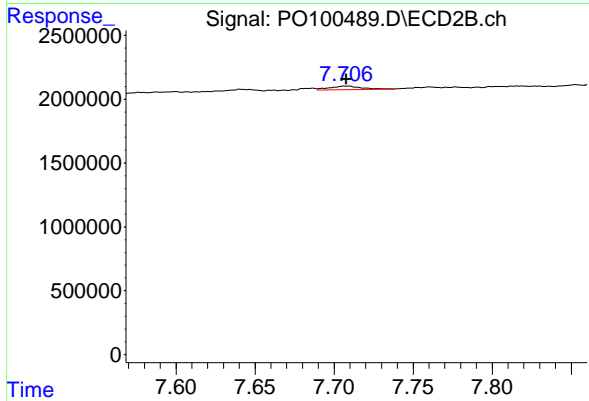
#41 AR-1268-1

R.T.: 7.641 min
 Delta R.T.: -0.002 min
 Response: 160783
 Conc: 1.16 ng/ml



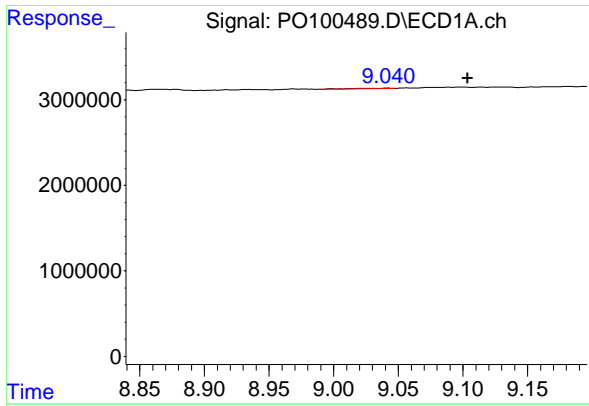
#42 AR-1268-2

R.T.: 8.869 min
 Delta R.T.: 0.002 min
 Response: 277115
 Conc: 2.76 ng/ml



#42 AR-1268-2

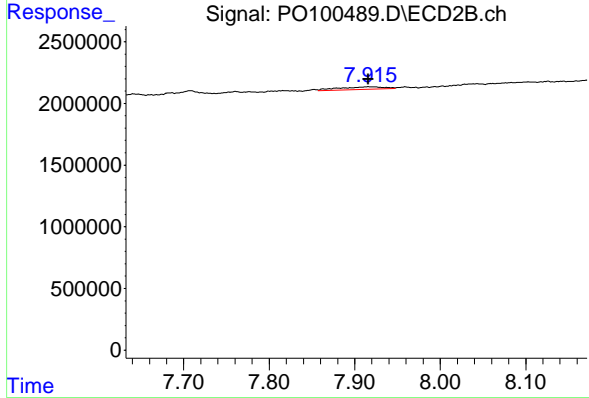
R.T.: 7.708 min
 Delta R.T.: 0.000 min
 Response: 403176
 Conc: 3.21 ng/ml



#43 AR-1268-3

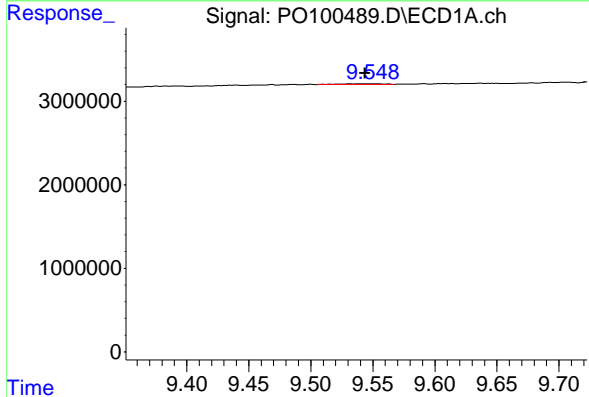
R.T.: 9.042 min
 Delta R.T.: -0.062 min
 Response: 131110
 Conc: 1.31 ng/ml

Instrument :
 ECD_O
 ClientSampleId :
 FENCE-POST-CONCRETE



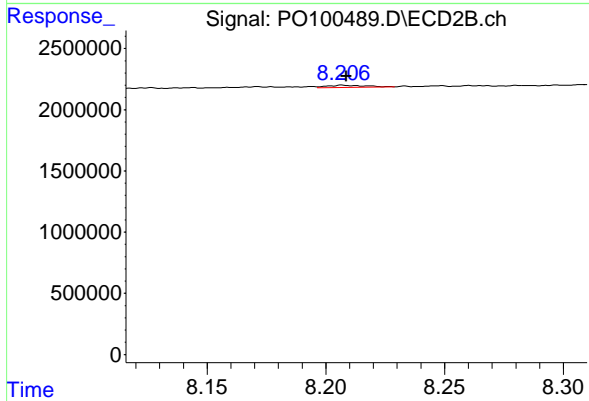
#43 AR-1268-3

R.T.: 7.915 min
 Delta R.T.: 0.000 min
 Response: 832890
 Conc: 6.78 ng/ml



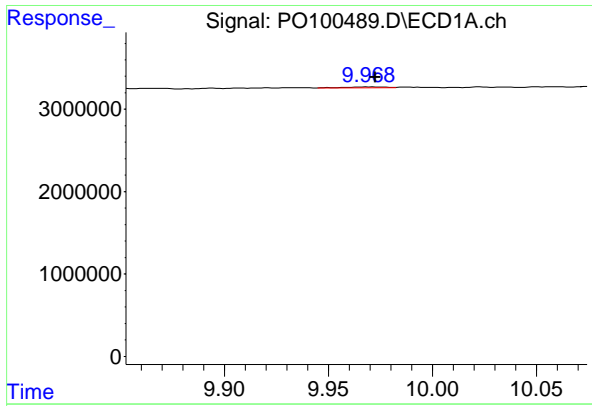
#44 AR-1268-4

R.T.: 9.549 min
 Delta R.T.: 0.005 min
 Response: 165703
 Conc: 5.94 ng/ml



#44 AR-1268-4

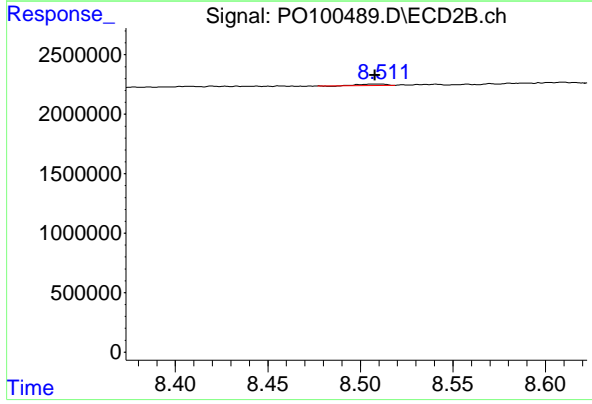
R.T.: 8.207 min
 Delta R.T.: -0.002 min
 Response: 218756
 Conc: 5.74 ng/ml



#45 AR-1268-5

R.T.: 9.970 min
 Delta R.T.: -0.003 min
 Response: 146539
 Conc: 0.60 ng/ml

Instrument :
 ECD_O
 ClientSampleId :
 FENCE-POST-CONCRETE



#45 AR-1268-5

R.T.: 8.510 min
 Delta R.T.: 0.003 min
 Response: 97522
 Conc: 0.31 ng/ml