

Data Path : Z:\pestpcbsrv\HPCHEM1\ECD_0\Data\PO121518\
 Data File : PO052611.D
 Signal(s) : Signal #1: ECD1A.CH Signal #2: ECD2B.CH
 Acq On : 15 Dec 2018 20:14
 Operator : SM/SJ
 Sample : I.BLK
 Misc :
 ALS Vial : 2 Sample Multiplier: 1

Instrument :
 ECD_0
 ClientSampleId :

Integration File signal 1: autoint1.e
 Integration File signal 2: autoint2.e
 Quant Time: Dec 16 03:08:26 2018
 Quant Method : Z:\pestpcbsrv\HPCHEM1\ECD_0\methods\PO121518.M
 Quant Title : GC EXTRACTABLES
 QLast Update : Sun Dec 16 03:01:24 2018
 Response via : Initial Calibration
 Integrator: ChemStation 6890 Scale Mode: Small noise peaks clipped

Volume Inj. : 2 µl
 Signal #1 Phase : ZB-MR1 Signal #2 Phase: ZB-MR2
 Signal #1 Info : 30Mx0.32mmx 0.50µ Signal #2 Info : 30M x 0.32mm x 0.25µm

Compound	RT#1	RT#2	Resp#1	Resp#2	ng/ml	ng/ml

System Monitoring Compounds						
1) SA Tetrachlo...	4.258	3.279	18722974	5439980	23.875	25.672
2) SA Decachlor...	9.813	7.964	10859453	4469480	21.553	20.258

Target Compounds

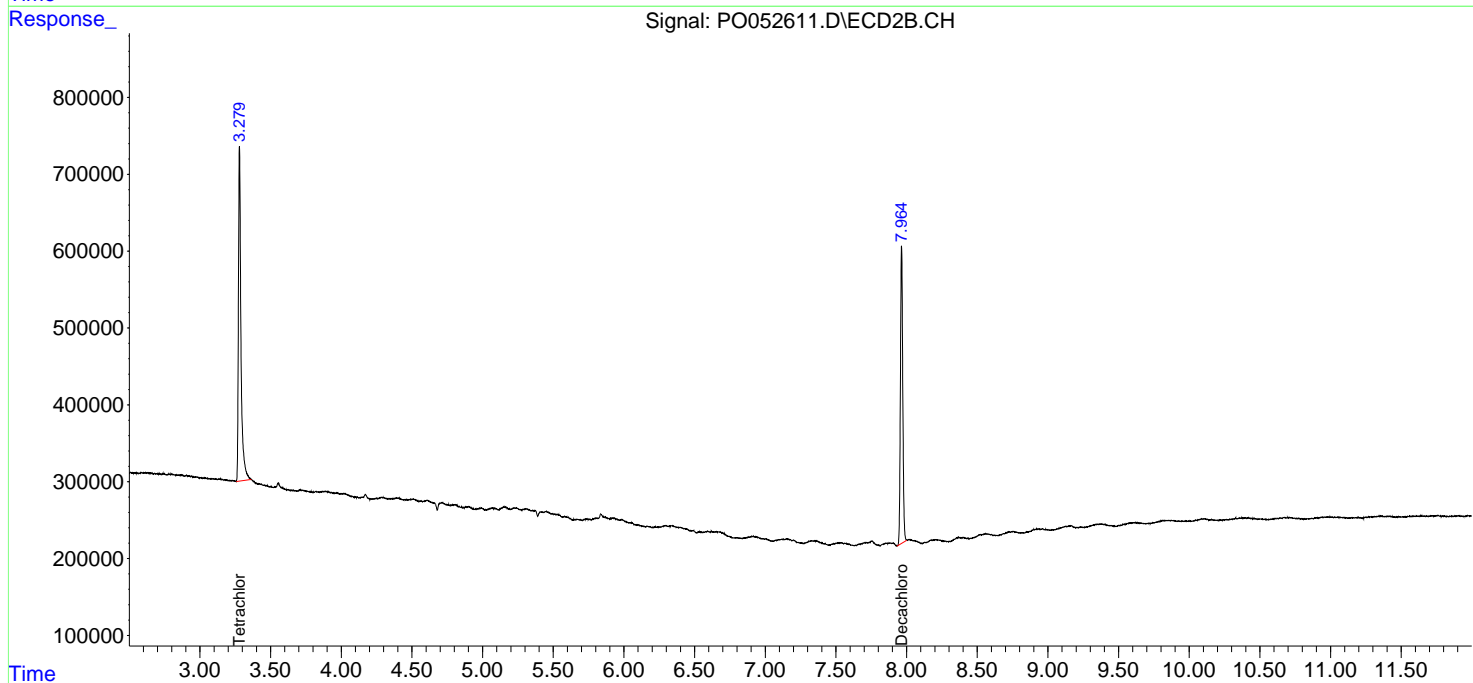
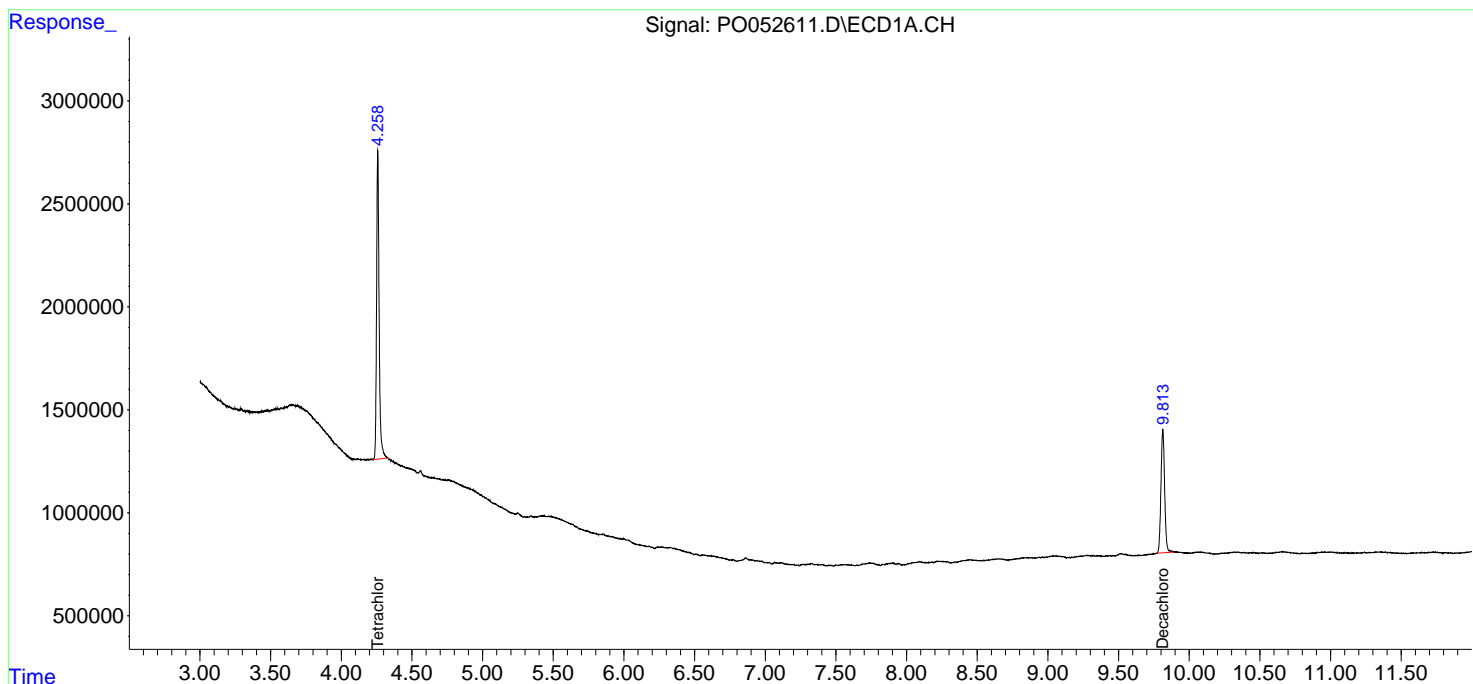
(f)=RT Delta > 1/2 Window (#)=Amounts differ by > 25% (m)=manual int.

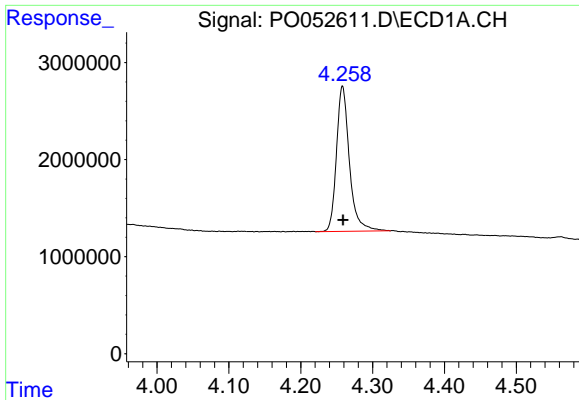
Data Path : Z:\pestpcbsrv\HPCHEM1\ECD_0\Data\PO121518\
 Data File : PO052611.D
 Signal(s) : Signal #1: ECD1A.CH Signal #2: ECD2B.CH
 Acq On : 15 Dec 2018 20:14
 Operator : SM/SJ
 Sample : I.BLK
 Misc :
 ALS Vial : 2 Sample Multiplier: 1

Instrument :
 ECD_O
 ClientSampleId :

Integration File signal 1: autoint1.e
 Integration File signal 2: autoint2.e
 Quant Time: Dec 16 03:08:26 2018
 Quant Method : Z:\pestpcbsrv\HPCHEM1\ECD_0\methods\PO121518.M
 Quant Title : GC EXTRACTABLES
 QLast Update : Sun Dec 16 03:01:24 2018
 Response via : Initial Calibration
 Integrator: ChemStation 6890 Scale Mode: Small noise peaks clipped

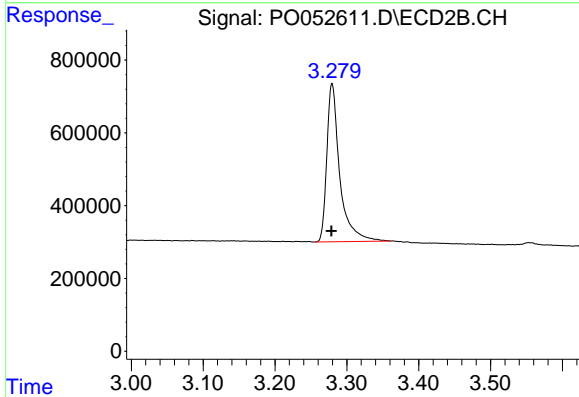
Volume Inj. : 2 µl
 Signal #1 Phase : ZB-MR1 Signal #2 Phase: ZB-MR2
 Signal #1 Info : 30Mx0.32mmx 0.50µ Signal #2 Info : 30M x 0.32mm x 0.25µm



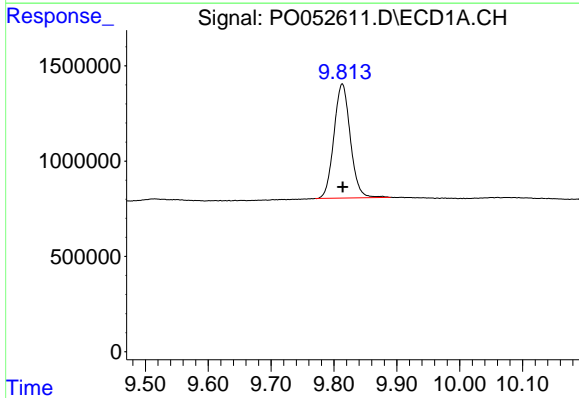


#1 Tetrachloro-m-xylene
 R.T.: 4.258 min
 Delta R.T.: 0.000 min
 Response: 18722974
 Conc: 23.88 ng/ml

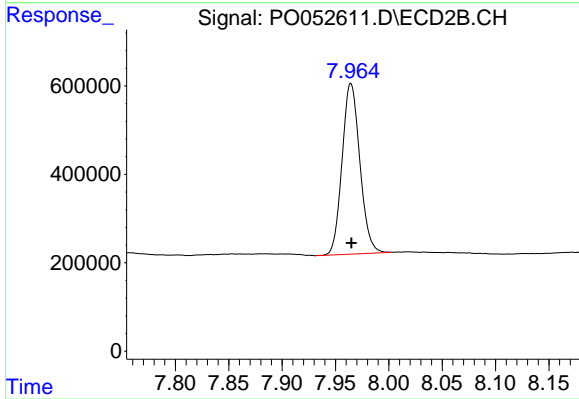
Instrument :
 ECD_O
 ClientSampleId :



#1 Tetrachloro-m-xylene
 R.T.: 3.279 min
 Delta R.T.: 0.001 min
 Response: 5439980
 Conc: 25.67 ng/ml



#2 Decachlorobiphenyl
 R.T.: 9.813 min
 Delta R.T.: 0.000 min
 Response: 10859453
 Conc: 21.55 ng/ml



#2 Decachlorobiphenyl
 R.T.: 7.964 min
 Delta R.T.: 0.000 min
 Response: 4469480
 Conc: 20.26 ng/ml