

Data Path : Z:\pestpcbsrv\HPCHEM1\ECD_0\Data\PO121520\
 Data File : PO073814.D
 Signal(s) : Signal #1: ECD1A.CH Signal #2: ECD2B.CH
 Acq On : 15 Dec 2020 9:49
 Operator : DD\AJ
 Sample : L5026-14DL 5X
 Misc :
 ALS Vial : 9 Sample Multiplier: 1

Instrument :
 ECD_0
 ClientSampleId :
 SB-57(6.5-7.0)DL

Integration File signal 1: autoint1.e
 Integration File signal 2: autoint2.e
 Quant Time: Dec 15 12:57:34 2020
 Quant Method : Z:\pestpcbsrv\HPCHEM1\ECD_0\methods\PO121020.M
 Quant Title : GC EXTRACTABLES
 QLast Update : Fri Dec 11 03:58:06 2020
 Response via : Initial Calibration
 Integrator: ChemStation 6890 Scale Mode: Small noise peaks clipped

Volume Inj. : 2 µl
 Signal #1 Phase : ZB-MR2 Signal #2 Phase: ZB-MR2
 Signal #1 Info : 30Mx0.32mmx 0.50µ Signal #2 Info : 30M x 0.32mm x 0.25µm

Compound	RT#1	RT#2	Resp#1	Resp#2	ng/ml	ng/ml
System Monitoring Compounds						
1) SA Tetrachlo...	4.935	3.995	439170	279955	4.803	5.219
2) SA Decachlor...	10.957	9.258	434333	271157	5.256	5.795
Target Compounds						
3) L1 AR-1016-1	6.260	0.000	11795	0	3.357	N.D. #
4) L1 AR-1016-2	6.260f	0.000	11795	0	2.413	N.D. #
6) L1 AR-1016-4	0.000	5.506	0	489456	N.D.	371.163 #
7) L1 AR-1016-5	6.773	5.732	455717	317139	191.939	193.546
13) L3 AR-1232-3	6.260f	0.000	11795	0	5.497	N.D. #
14) L3 AR-1232-4	0.000	5.549	0	147045	N.D.	240.907 #
15) L3 AR-1232-5	6.555	5.732	745840	317139	1041.696	474.530 #
16) L4 AR-1242-1	6.260	0.000	11795	0	4.162	N.D. #
17) L4 AR-1242-2	6.260f	0.000	11795	0	3.029	N.D. #
19) L4 AR-1242-4	0.000	5.549	0	147045	N.D.	117.494 #
20) L4 AR-1242-5	7.244	6.110	767608	1655592	351.496	971.253 #
21) L5 AR-1248-1	6.260	0.000	11795	0	5.428	N.D. #
22) L5 AR-1248-2	6.555	5.506	745840	489456	266.892	263.799
23) L5 AR-1248-3	6.773	5.549	455717	147045	139.151	78.376 #
24) L5 AR-1248-4	7.203	5.732	1038000	317139	259.553	140.898 #
25) L5 AR-1248-5	7.244	6.153	767608	332418	202.977	143.070 #
26) L6 AR-1254-1	7.173	6.110	1923231	1655592	506.675	468.468
27) L6 AR-1254-2	7.403	6.269	2950295	1564641	500.406	501.164
28) L6 AR-1254-3	7.786	6.686	3518439	2732707	574.235	558.151
29) L6 AR-1254-4	8.083	6.924	3404235	2380480	648.920	678.769
30) L6 AR-1254-5	8.511	7.351	3036115	2754323	589.476	624.616
31) L7 AR-1260-1	7.953	6.823	1336606	1296683	316.249	419.462 #
32) L7 AR-1260-2	8.219	7.019	1909849	1371714	339.963	338.151
33) L7 AR-1260-3	8.573f	7.170	360711	1039552	78.911	297.839 #
34) L7 AR-1260-4	8.809	7.652	1178365	118703	248.893	39.309 #
35) L7 AR-1260-5	9.142	7.898	498515	265812	49.953	35.584 #
36) L8 AR-1262-1	8.573f	7.351	360711	2754323	48.184	1101.817 #
37) L8 AR-1262-2	9.142	7.898	498515	265812	38.868	30.218
38) L8 AR-1262-3	9.477f	0.000	367052	0	43.265	N.D. #
39) L8 AR-1262-4	9.525f	8.243	125522	309594	37.530	50.315 #
40) L8 AR-1262-5	10.211	0.000	48201	0	10.664	N.D. #
41) L9 AR-1268-1	9.477f	0.000	367052	0	25.770	N.D. #
42) L9 AR-1268-2	0.000	8.243	0	309594	N.D.	37.578 #
44) L9 AR-1268-4	10.211	0.000	48201	0	10.289	N.D. #

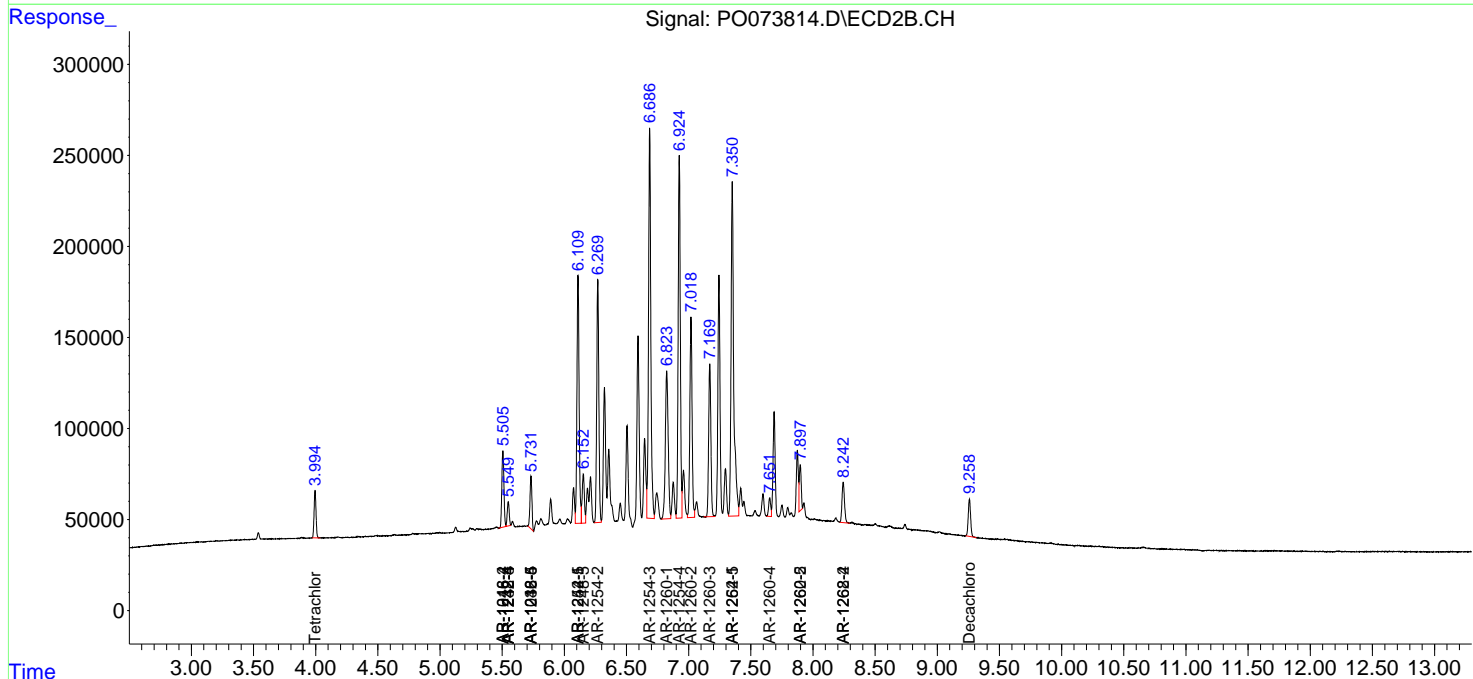
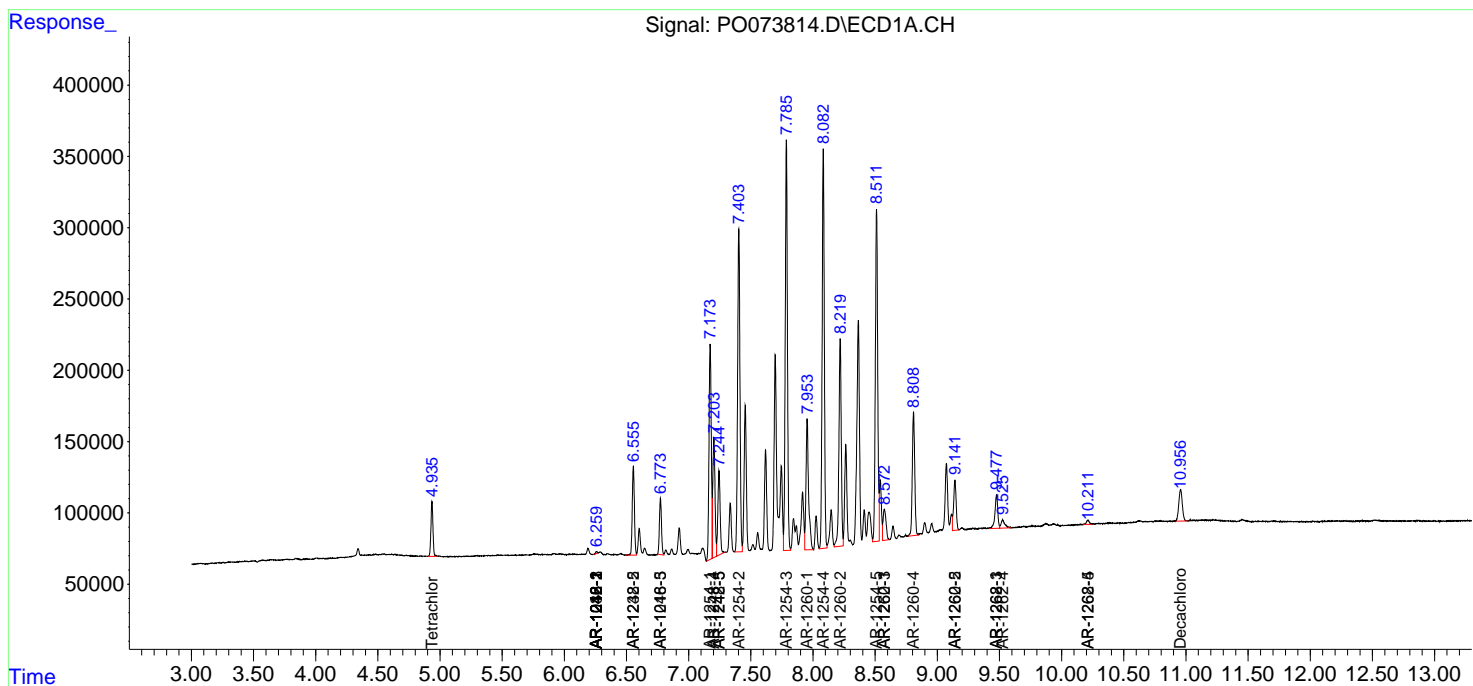
(f)=RT Delta > 1/2 Window (#)=Amounts differ by > 25% (m)=manual int.

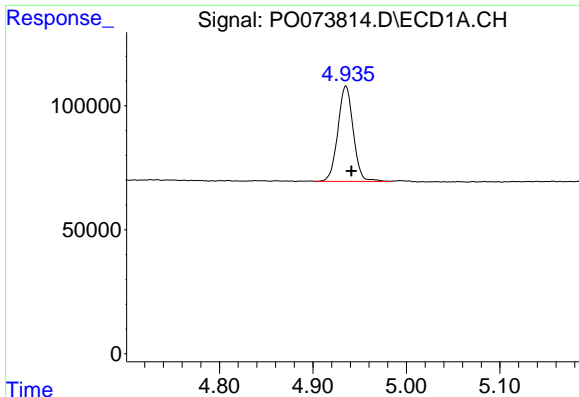
Data Path : Z:\pestpcbsrv\HPCHEM1\ECD_0\Data\PO121520\
 Data File : PO073814.D
 Signal(s) : Signal #1: ECD1A.CH Signal #2: ECD2B.CH
 Acq On : 15 Dec 2020 9:49
 Operator : DD\AJ
 Sample : L5026-14DL 5X
 Misc :
 ALS Vial : 9 Sample Multiplier: 1

Instrument :
 ECD_O
 ClientSampled :
 SB-57(6.5-7.0)DL

Integration File signal 1: autoint1.e
 Integration File signal 2: autoint2.e
 Quant Time: Dec 15 12:57:34 2020
 Quant Method : Z:\pestpcbsrv\HPCHEM1\ECD_0\methods\PO121020.M
 Quant Title : GC EXTRACTABLES
 QLast Update : Fri Dec 11 03:58:06 2020
 Response via : Initial Calibration
 Integrator: ChemStation 6890 Scale Mode: Small noise peaks clipped

Volume Inj. : 2 µl
 Signal #1 Phase : ZB-MR1 Signal #2 Phase: ZB-MR2
 Signal #1 Info : 30Mx0.32mmx 0.50µ Signal #2 Info : 30M x 0.32mm x 0.25µm

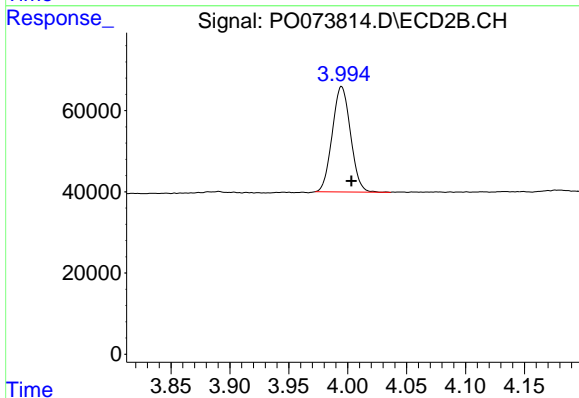




#1 Tetrachloro-m-xylene

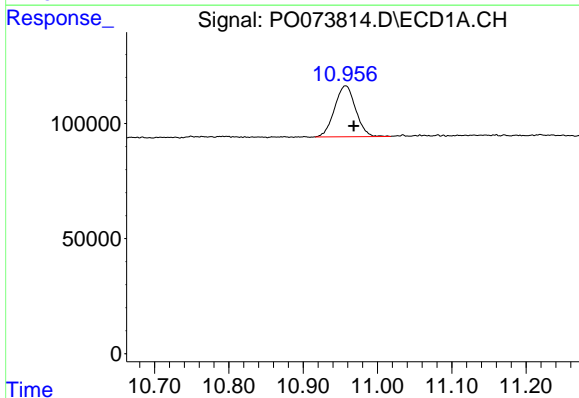
R.T.: 4.935 min
 Delta R.T.: -0.006 min
 Response: 439170
 Conc: 4.80 ng/ml

Instrument :
 ECD_O
 ClientSampleId :
 SB-57(6.5-7.0)DL



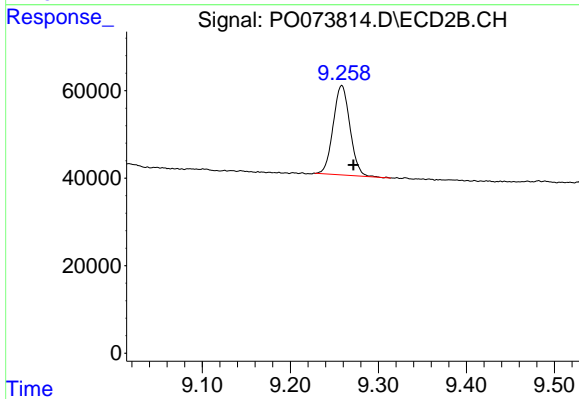
#1 Tetrachloro-m-xylene

R.T.: 3.995 min
 Delta R.T.: -0.008 min
 Response: 279955
 Conc: 5.22 ng/ml



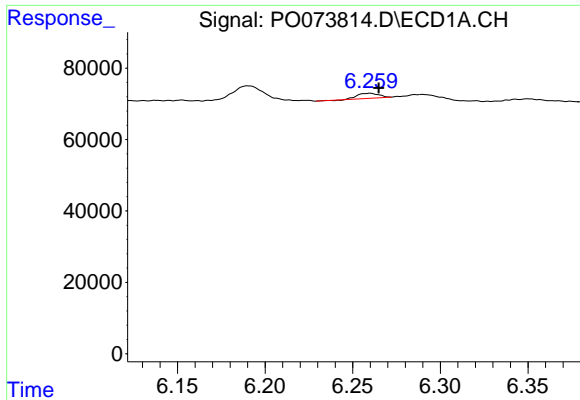
#2 Decachlorobiphenyl

R.T.: 10.957 min
 Delta R.T.: -0.011 min
 Response: 434333
 Conc: 5.26 ng/ml



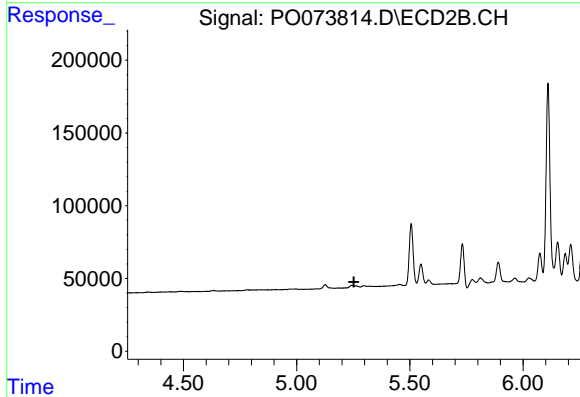
#2 Decachlorobiphenyl

R.T.: 9.258 min
 Delta R.T.: -0.013 min
 Response: 271157
 Conc: 5.80 ng/ml

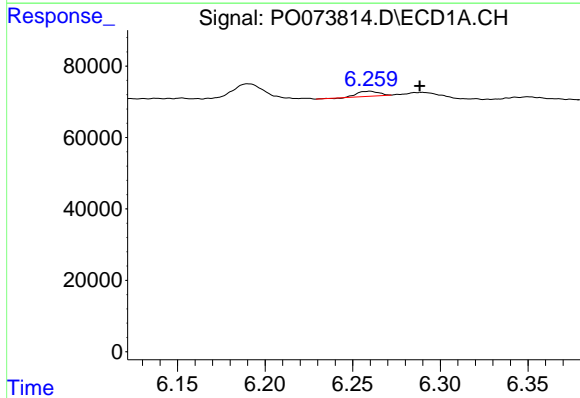


#3 AR-1016-1
 R.T.: 6.260 min
 Delta R.T.: -0.005 min
 Response: 11795
 Conc: 3.36 ng/ml

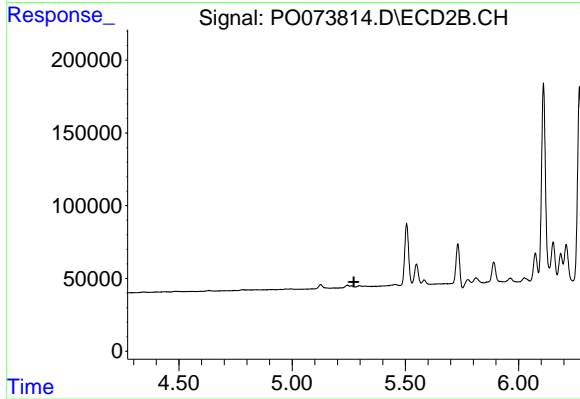
Instrument :
 ECD_O
 ClientSampled :
 SB-57(6.5-7.0)DL



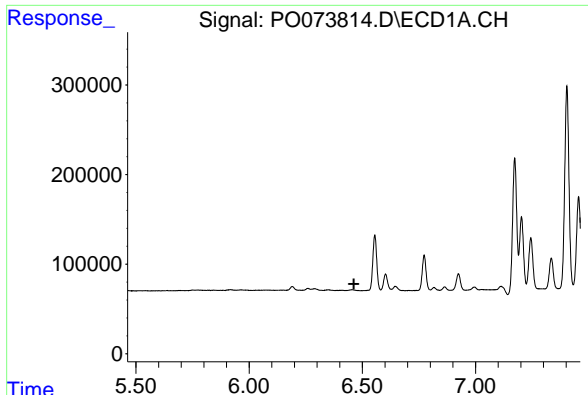
#3 AR-1016-1
 R.T.: 0.000 min
 Exp R.T. : 5.252 min
 Response: 0
 Conc: N.D.



#4 AR-1016-2
 R.T.: 6.260 min
 Delta R.T.: -0.028 min
 Response: 11795
 Conc: 2.41 ng/ml



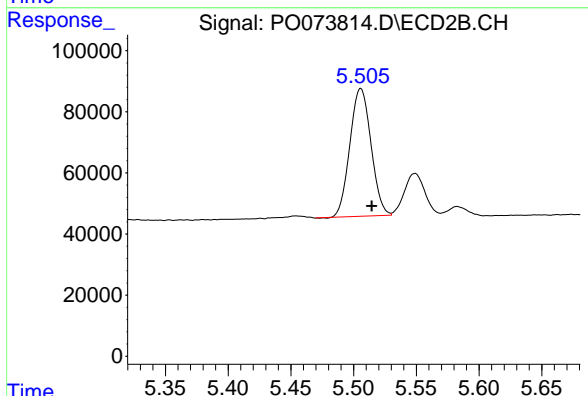
#4 AR-1016-2
 R.T.: 0.000 min
 Exp R.T. : 5.273 min
 Response: 0
 Conc: N.D.



#6 AR-1016-4

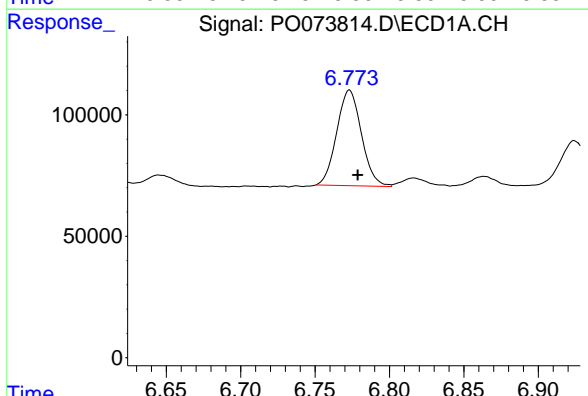
R.T.: 0.000 min
 Exp R.T.: 6.462 min
 Response: 0
 Conc: N.D.

Instrument :
 ECD_O
 ClientSampleId :
 SB-57(6.5-7.0)DL



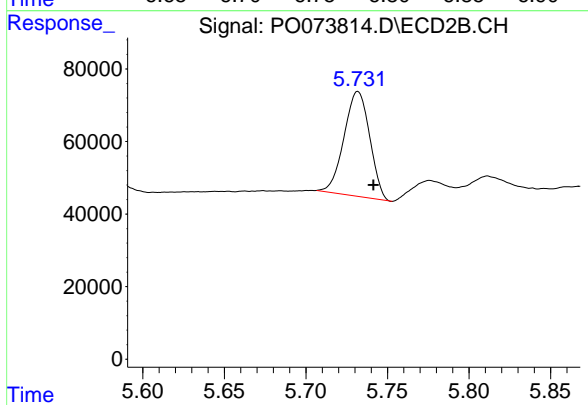
#6 AR-1016-4

R.T.: 5.506 min
 Delta R.T.: -0.009 min
 Response: 489456
 Conc: 371.16 ng/ml



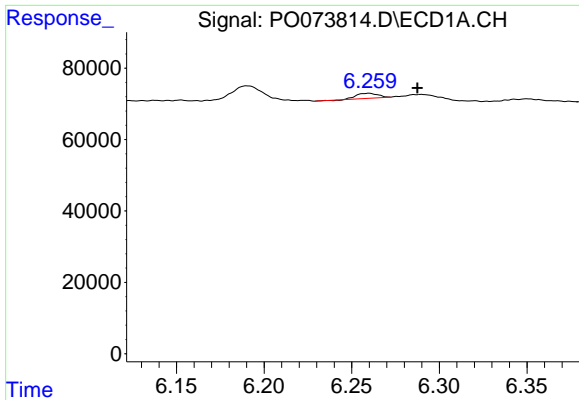
#7 AR-1016-5

R.T.: 6.773 min
 Delta R.T.: -0.006 min
 Response: 455717
 Conc: 191.94 ng/ml



#7 AR-1016-5

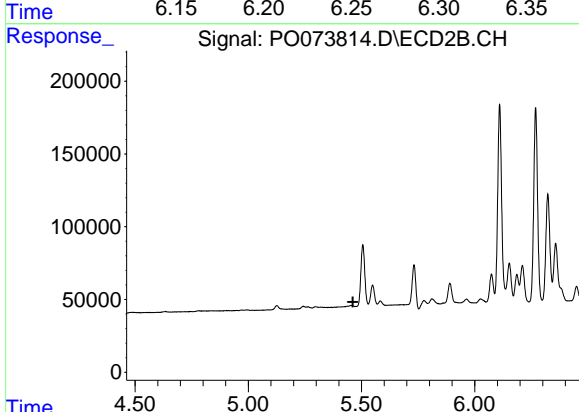
R.T.: 5.732 min
 Delta R.T.: -0.009 min
 Response: 317139
 Conc: 193.55 ng/ml



#13 AR-1232-3

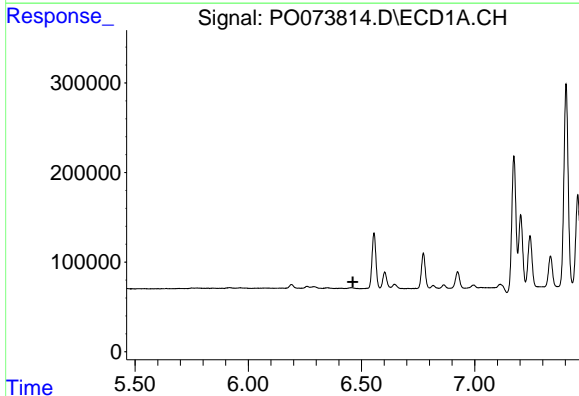
R.T.: 6.260 min
 Delta R.T.: -0.028 min
 Response: 11795
 Conc: 5.50 ng/ml

Instrument :
 ECD_O
ClientSampled :
 SB-57(6.5-7.0)DL



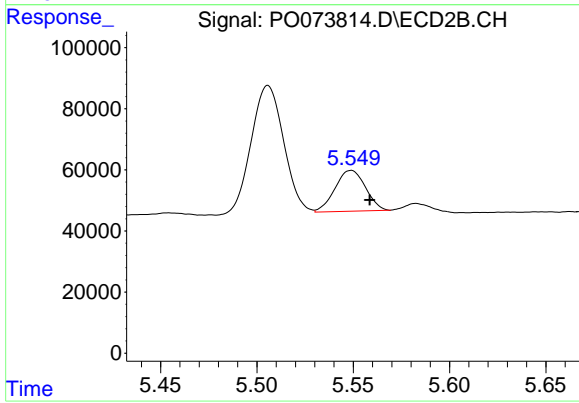
#13 AR-1232-3

R.T.: 0.000 min
 Exp R.T. : 5.462 min
 Response: 0
 Conc: N.D.



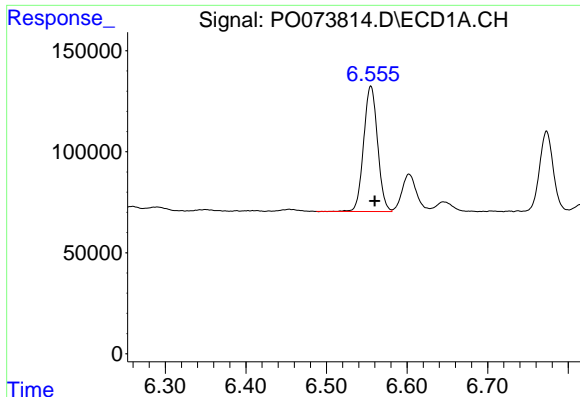
#14 AR-1232-4

R.T.: 0.000 min
 Exp R.T. : 6.462 min
 Response: 0
 Conc: N.D.



#14 AR-1232-4

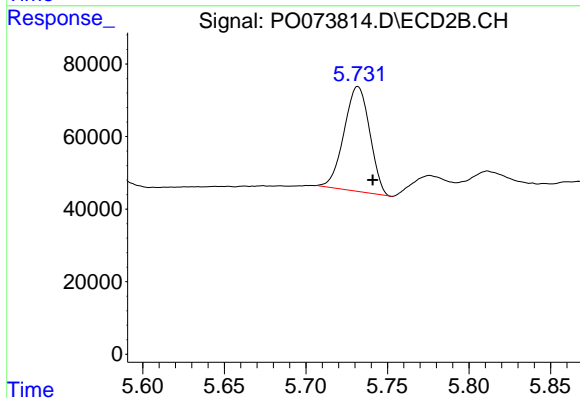
R.T.: 5.549 min
 Delta R.T.: -0.010 min
 Response: 147045
 Conc: 240.91 ng/ml



#15 AR-1232-5

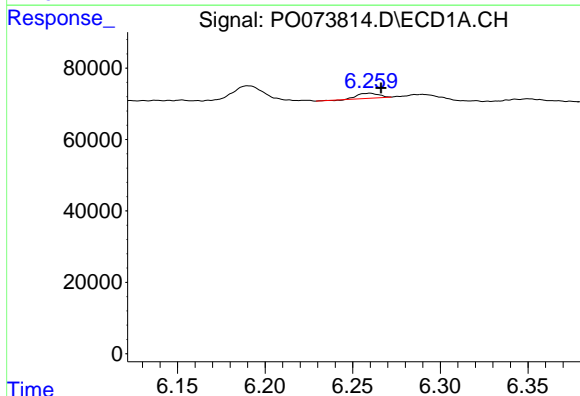
R.T.: 6.555 min
 Delta R.T.: -0.005 min
 Response: 745840
 Conc: 1041.70 ng/ml

Instrument :
 ECD_O
 ClientSampleId :
 SB-57(6.5-7.0)DL



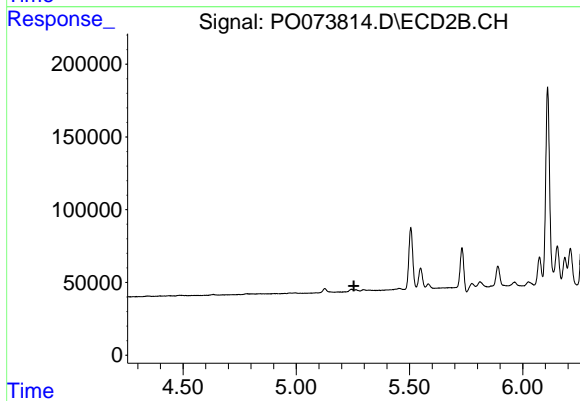
#15 AR-1232-5

R.T.: 5.732 min
 Delta R.T.: -0.009 min
 Response: 317139
 Conc: 474.53 ng/ml



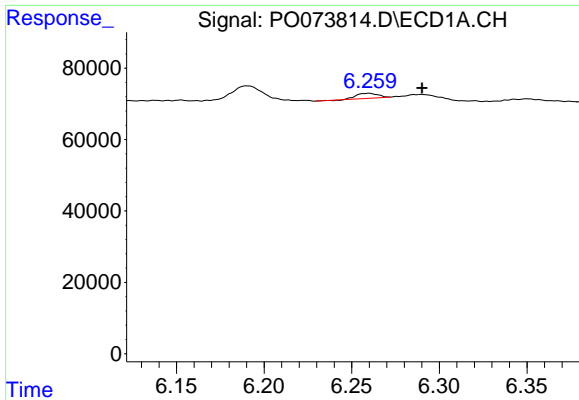
#16 AR-1242-1

R.T.: 6.260 min
 Delta R.T.: -0.006 min
 Response: 11795
 Conc: 4.16 ng/ml



#16 AR-1242-1

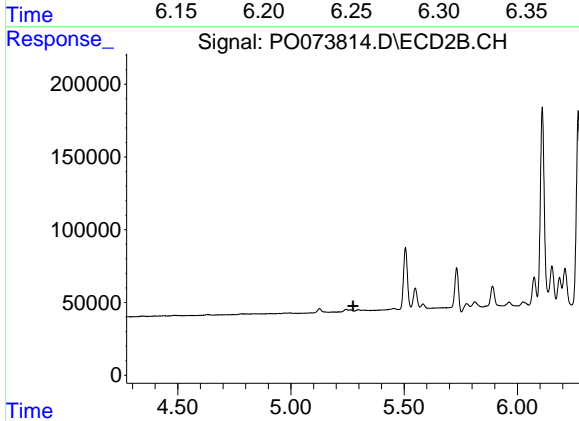
R.T.: 0.000 min
 Exp R.T. : 5.254 min
 Response: 0
 Conc: N.D.



#17 AR-1242-2

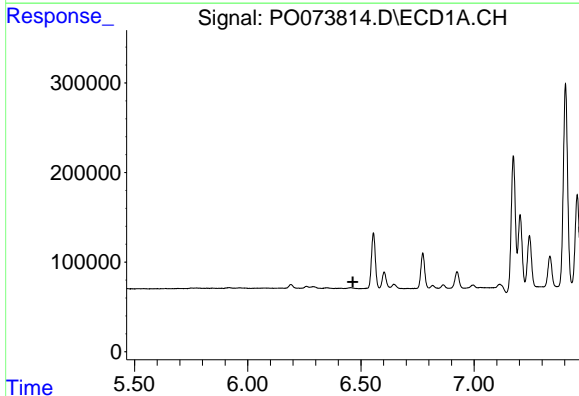
R.T.: 6.260 min
 Delta R.T.: -0.030 min
 Response: 11795
 Conc: 3.03 ng/ml

Instrument :
 ECD_O
ClientSampled :
 SB-57(6.5-7.0)DL



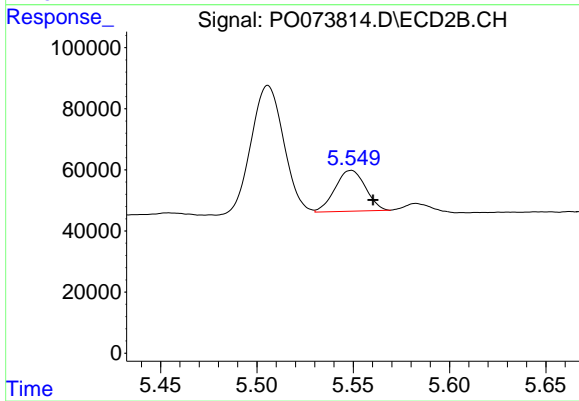
#17 AR-1242-2

R.T.: 0.000 min
 Exp R.T. : 5.274 min
 Response: 0
 Conc: N.D.



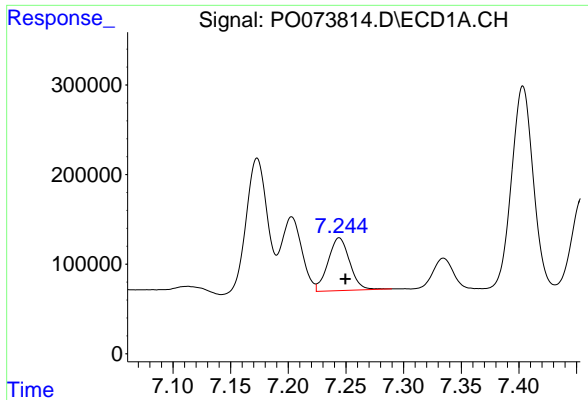
#19 AR-1242-4

R.T.: 0.000 min
 Exp R.T. : 6.464 min
 Response: 0
 Conc: N.D.



#19 AR-1242-4

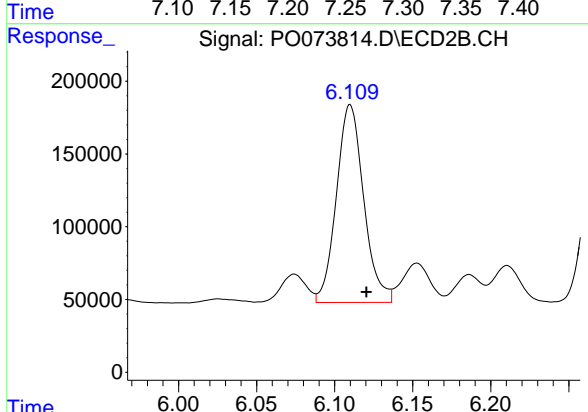
R.T.: 5.549 min
 Delta R.T.: -0.011 min
 Response: 147045
 Conc: 117.49 ng/ml



#20 AR-1242-5

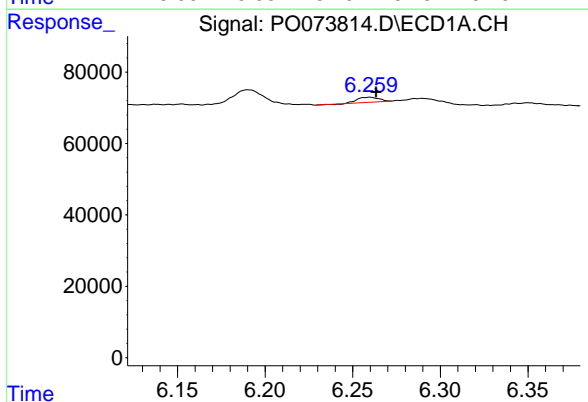
R.T.: 7.244 min
 Delta R.T.: -0.005 min
 Response: 767608
 Conc: 351.50 ng/ml

Instrument :
 ECD_O
 ClientSampleId :
 SB-57(6.5-7.0)DL



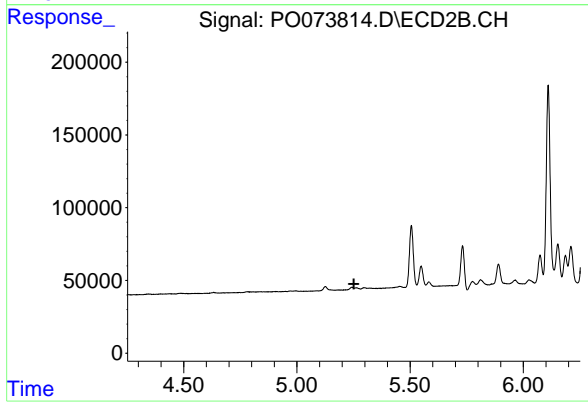
#20 AR-1242-5

R.T.: 6.110 min
 Delta R.T.: -0.010 min
 Response: 1655592
 Conc: 971.25 ng/ml



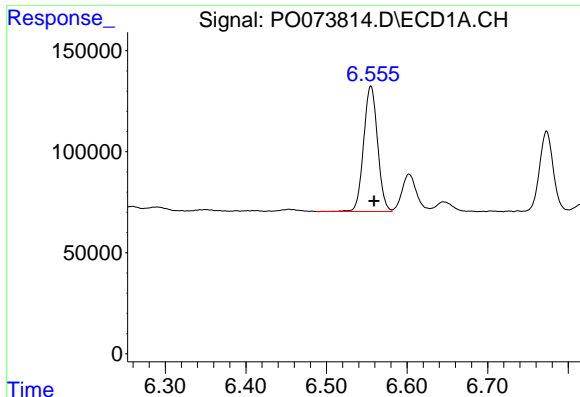
#21 AR-1248-1

R.T.: 6.260 min
 Delta R.T.: -0.003 min
 Response: 11795
 Conc: 5.43 ng/ml



#21 AR-1248-1

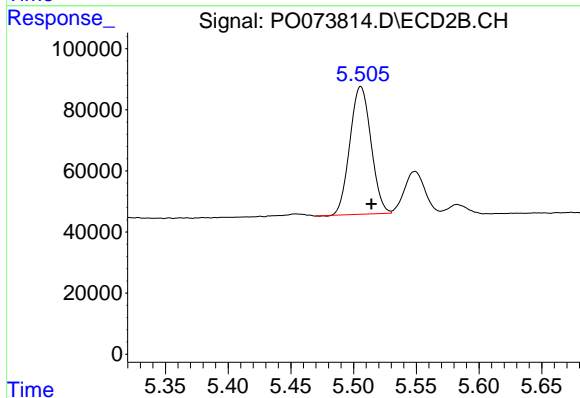
R.T.: 0.000 min
 Exp R.T. : 5.252 min
 Response: 0
 Conc: N.D.



#22 AR-1248-2

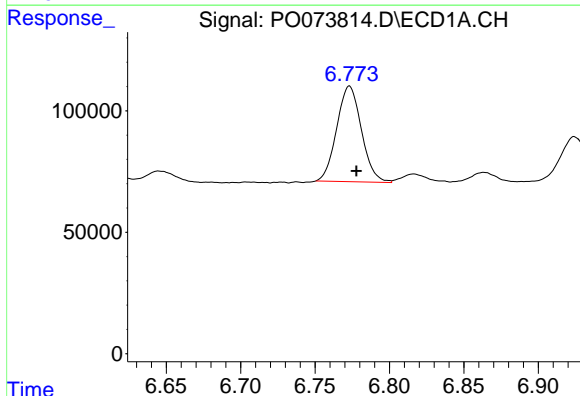
R.T.: 6.555 min
 Delta R.T.: -0.004 min
 Response: 745840
 Conc: 266.89 ng/ml

Instrument :
 ECD_O
 ClientSampleId :
 SB-57(6.5-7.0)DL



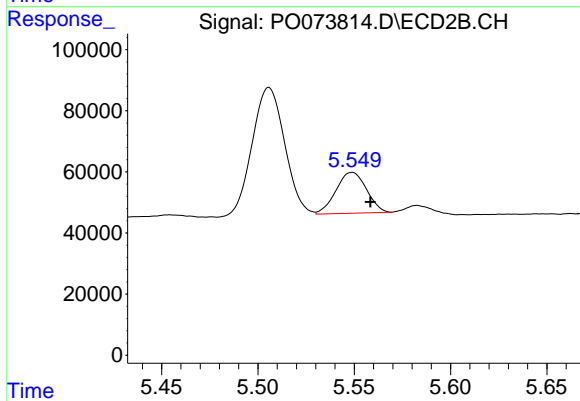
#22 AR-1248-2

R.T.: 5.506 min
 Delta R.T.: -0.008 min
 Response: 489456
 Conc: 263.80 ng/ml



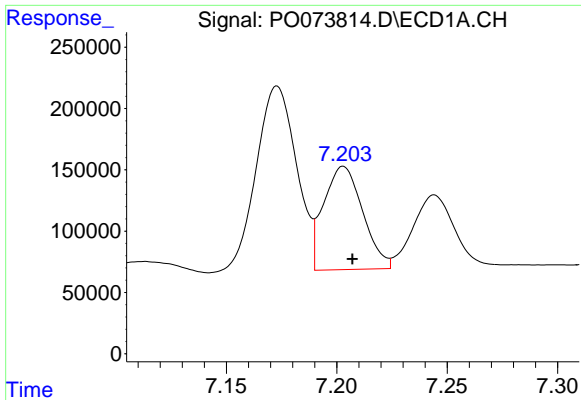
#23 AR-1248-3

R.T.: 6.773 min
 Delta R.T.: -0.005 min
 Response: 455717
 Conc: 139.15 ng/ml



#23 AR-1248-3

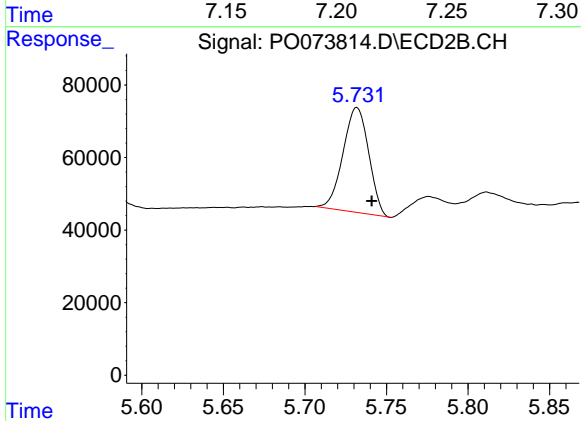
R.T.: 5.549 min
 Delta R.T.: -0.009 min
 Response: 147045
 Conc: 78.38 ng/ml



#24 AR-1248-4

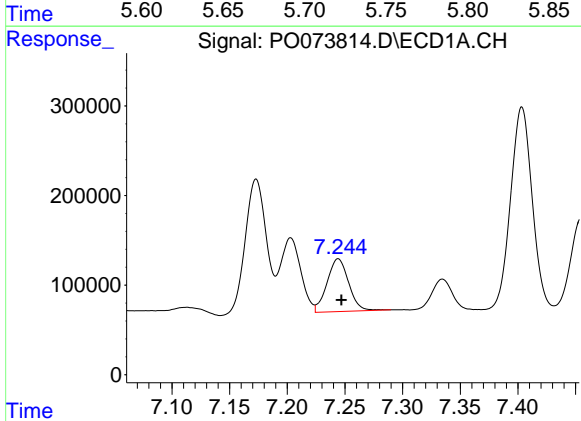
R.T.: 7.203 min
 Delta R.T.: -0.004 min
 Response: 1038000
 Conc: 259.55 ng/ml

Instrument :
 ECD_O
ClientSampled :
 SB-57(6.5-7.0)DL



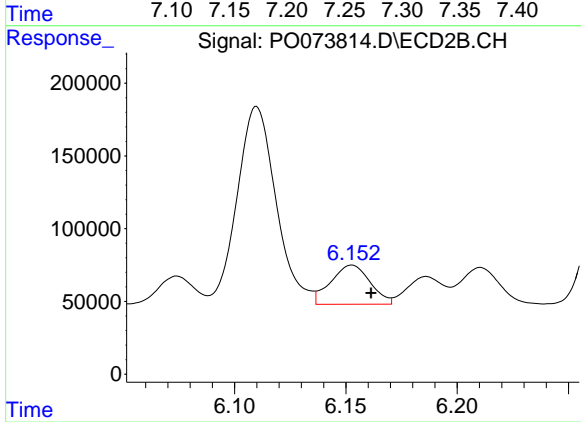
#24 AR-1248-4

R.T.: 5.732 min
 Delta R.T.: -0.009 min
 Response: 317139
 Conc: 140.90 ng/ml



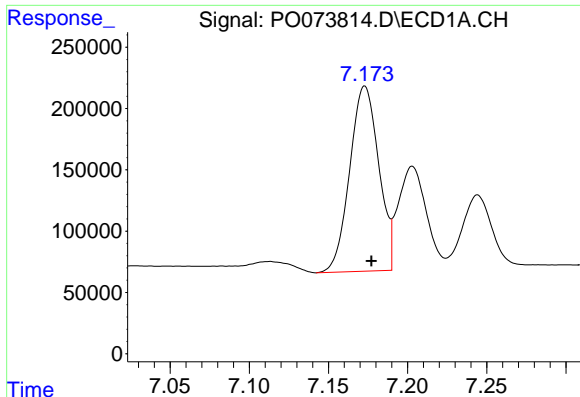
#25 AR-1248-5

R.T.: 7.244 min
 Delta R.T.: -0.003 min
 Response: 767608
 Conc: 202.98 ng/ml



#25 AR-1248-5

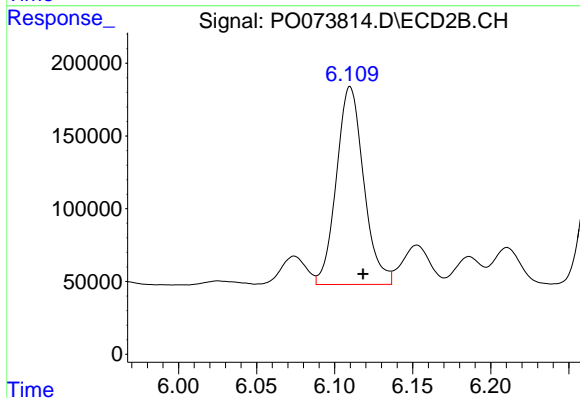
R.T.: 6.153 min
 Delta R.T.: -0.009 min
 Response: 332418
 Conc: 143.07 ng/ml



#26 AR-1254-1

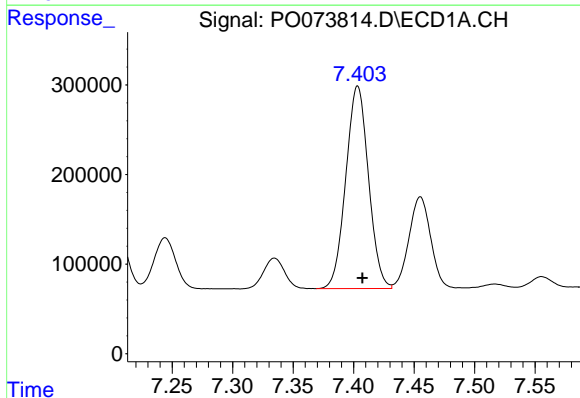
R.T.: 7.173 min
 Delta R.T.: -0.004 min
 Response: 1923231
 Conc: 506.68 ng/ml

Instrument :
 ECD_O
 ClientSampleId :
 SB-57(6.5-7.0)DL



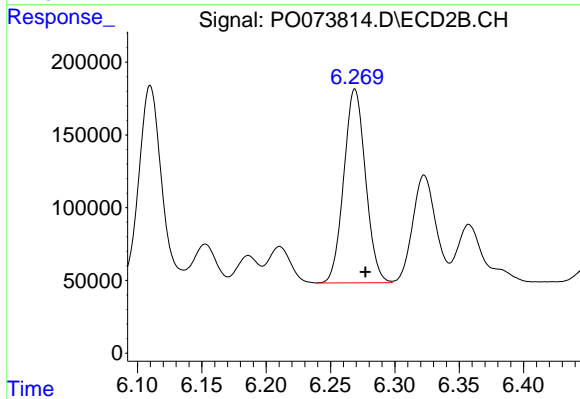
#26 AR-1254-1

R.T.: 6.110 min
 Delta R.T.: -0.008 min
 Response: 1655592
 Conc: 468.47 ng/ml



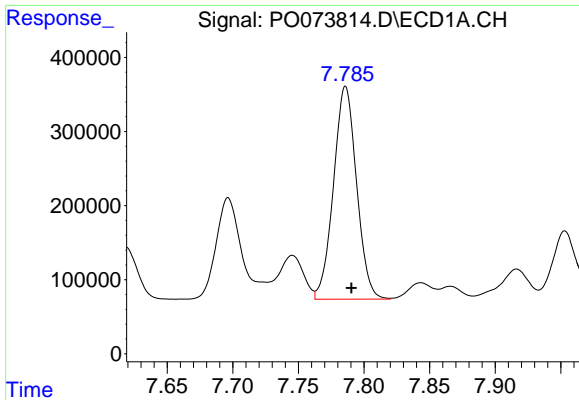
#27 AR-1254-2

R.T.: 7.403 min
 Delta R.T.: -0.004 min
 Response: 2950295
 Conc: 500.41 ng/ml



#27 AR-1254-2

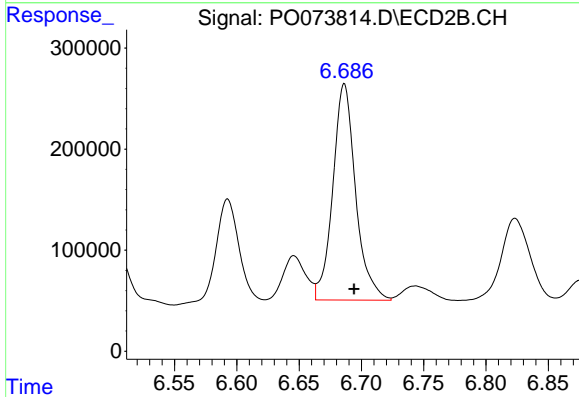
R.T.: 6.269 min
 Delta R.T.: -0.008 min
 Response: 1564641
 Conc: 501.16 ng/ml



#28 AR-1254-3

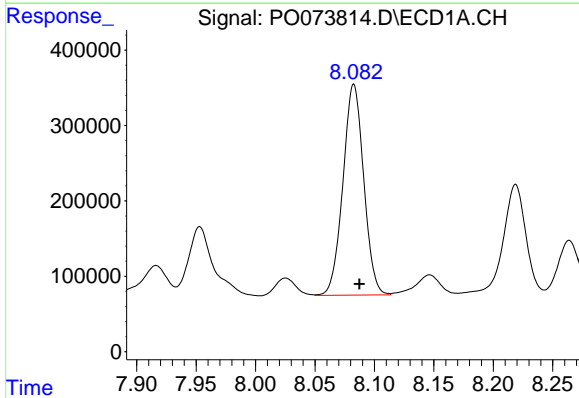
R.T.: 7.786 min
 Delta R.T.: -0.004 min
 Response: 3518439
 Conc: 574.23 ng/ml

Instrument :
 ECD_O
 ClientSampleId :
 SB-57(6.5-7.0)DL



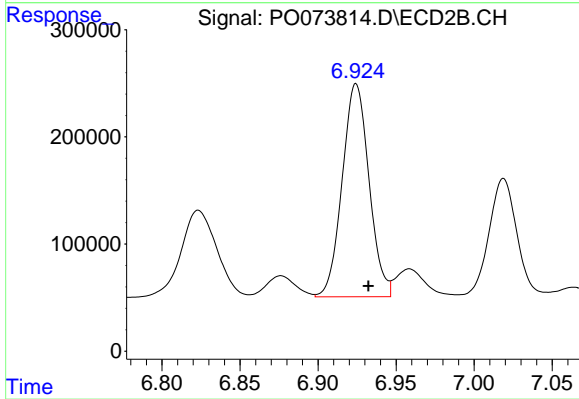
#28 AR-1254-3

R.T.: 6.686 min
 Delta R.T.: -0.008 min
 Response: 2732707
 Conc: 558.15 ng/ml



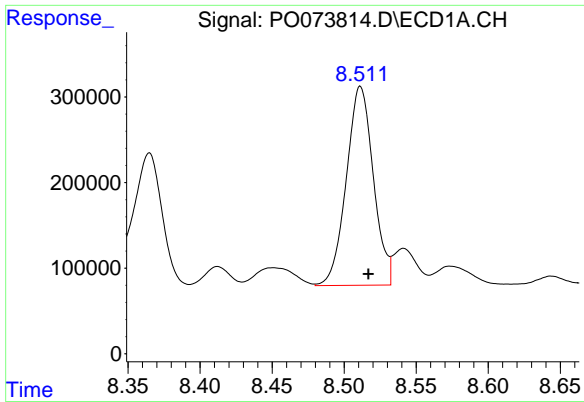
#29 AR-1254-4

R.T.: 8.083 min
 Delta R.T.: -0.005 min
 Response: 3404235
 Conc: 648.92 ng/ml



#29 AR-1254-4

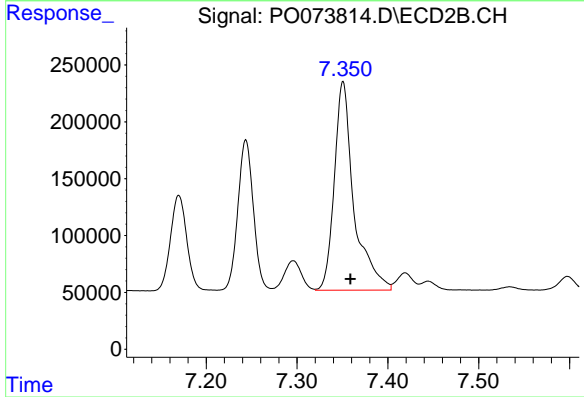
R.T.: 6.924 min
 Delta R.T.: -0.008 min
 Response: 2380480
 Conc: 678.77 ng/ml



#30 AR-1254-5

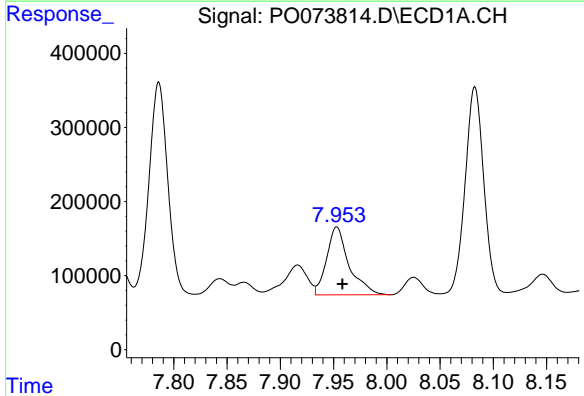
R.T.: 8.511 min
 Delta R.T.: -0.005 min
 Response: 3036115
 Conc: 589.48 ng/ml

Instrument :
 ECD_O
 ClientSampleId :
 SB-57(6.5-7.0)DL



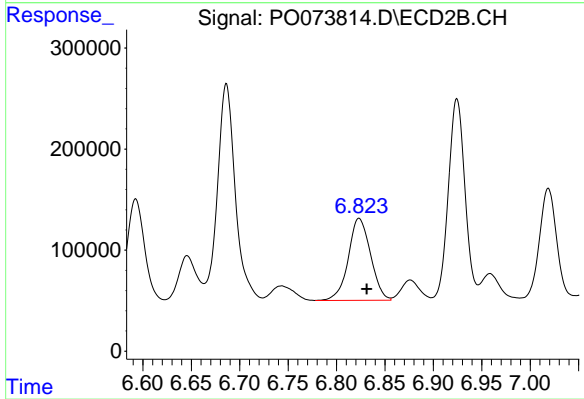
#30 AR-1254-5

R.T.: 7.351 min
 Delta R.T.: -0.008 min
 Response: 2754323
 Conc: 624.62 ng/ml



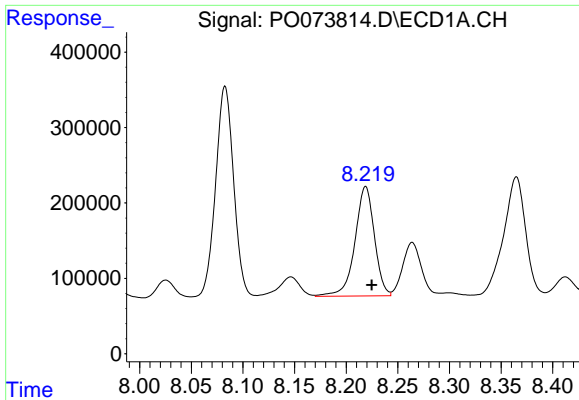
#31 AR-1260-1

R.T.: 7.953 min
 Delta R.T.: -0.005 min
 Response: 1336606
 Conc: 316.25 ng/ml



#31 AR-1260-1

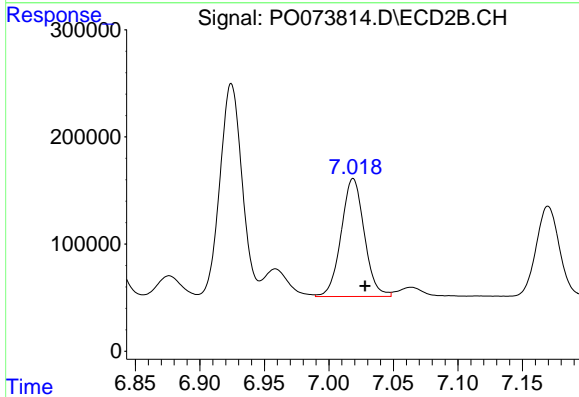
R.T.: 6.823 min
 Delta R.T.: -0.008 min
 Response: 1296683
 Conc: 419.46 ng/ml



#32 AR-1260-2

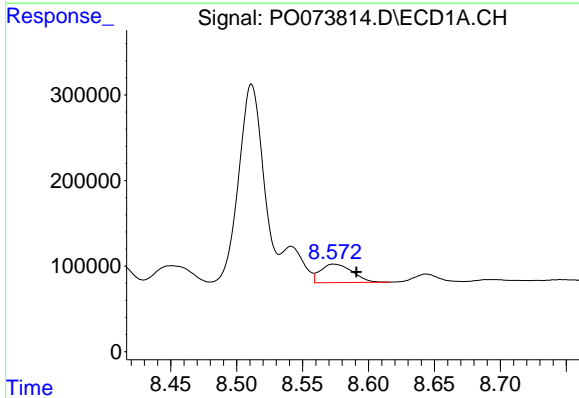
R.T.: 8.219 min
 Delta R.T.: -0.006 min
 Response: 1909849
 Conc: 339.96 ng/ml

Instrument :
 ECD_O
ClientSampled :
 SB-57(6.5-7.0)DL



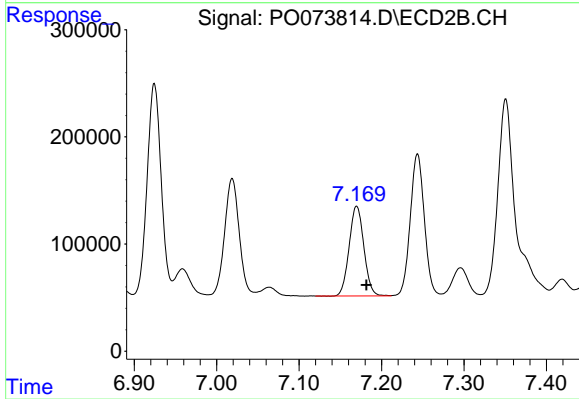
#32 AR-1260-2

R.T.: 7.019 min
 Delta R.T.: -0.009 min
 Response: 1371714
 Conc: 338.15 ng/ml



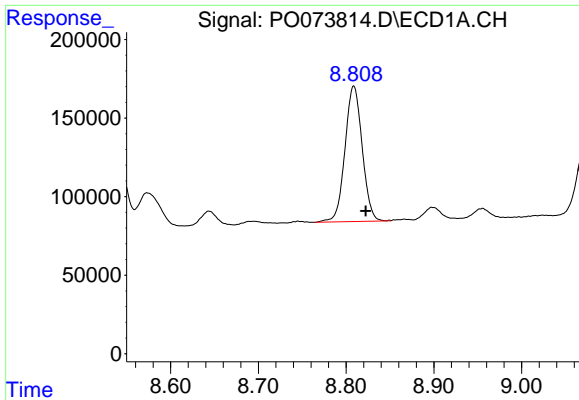
#33 AR-1260-3

R.T.: 8.573 min
 Delta R.T.: -0.017 min
 Response: 360711
 Conc: 78.91 ng/ml



#33 AR-1260-3

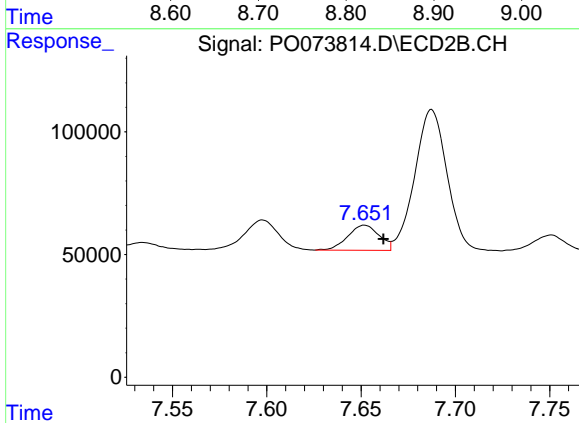
R.T.: 7.170 min
 Delta R.T.: -0.012 min
 Response: 1039552
 Conc: 297.84 ng/ml



#34 AR-1260-4

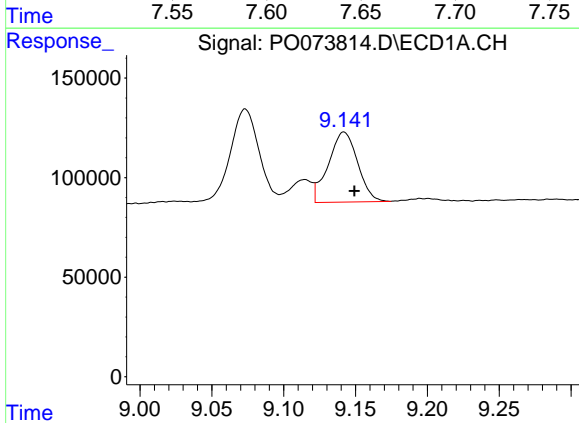
R.T.: 8.809 min
 Delta R.T.: -0.014 min
 Response: 1178365
 Conc: 248.89 ng/ml

Instrument :
 ECD_O
 ClientSampleId :
 SB-57(6.5-7.0)DL



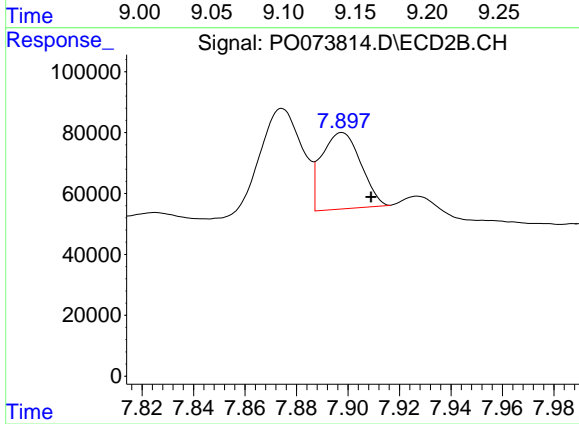
#34 AR-1260-4

R.T.: 7.652 min
 Delta R.T.: -0.010 min
 Response: 118703
 Conc: 39.31 ng/ml



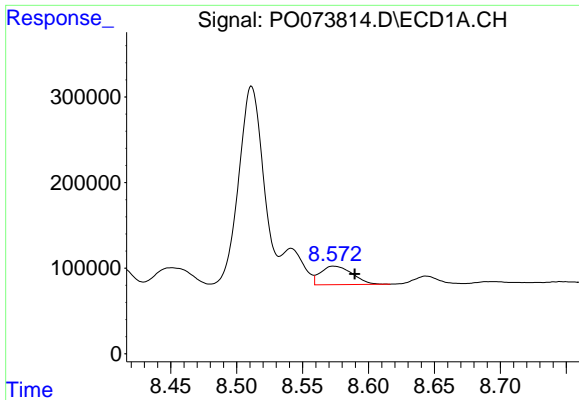
#35 AR-1260-5

R.T.: 9.142 min
 Delta R.T.: -0.007 min
 Response: 498515
 Conc: 49.95 ng/ml



#35 AR-1260-5

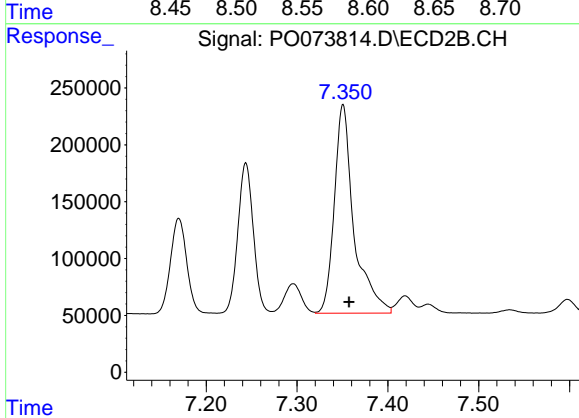
R.T.: 7.898 min
 Delta R.T.: -0.011 min
 Response: 265812
 Conc: 35.58 ng/ml



#36 AR-1262-1

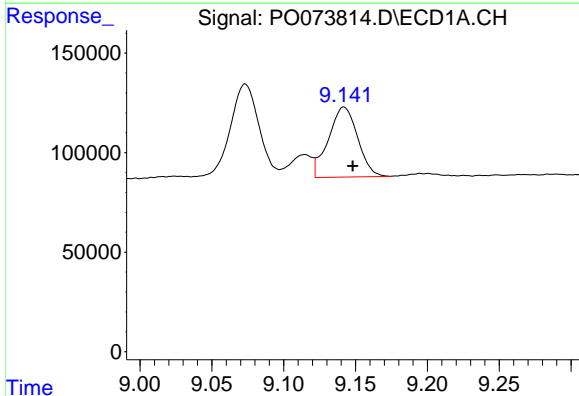
R.T.: 8.573 min
 Delta R.T.: -0.016 min
 Response: 360711
 Conc: 48.18 ng/ml

Instrument :
 ECD_O
 ClientSampleId :
 SB-57(6.5-7.0)DL



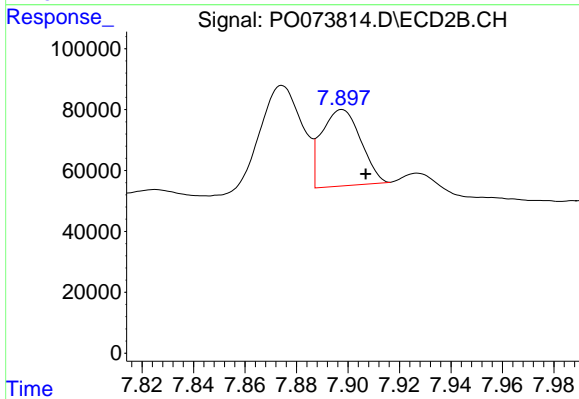
#36 AR-1262-1

R.T.: 7.351 min
 Delta R.T.: -0.007 min
 Response: 2754323
 Conc: 1101.82 ng/ml



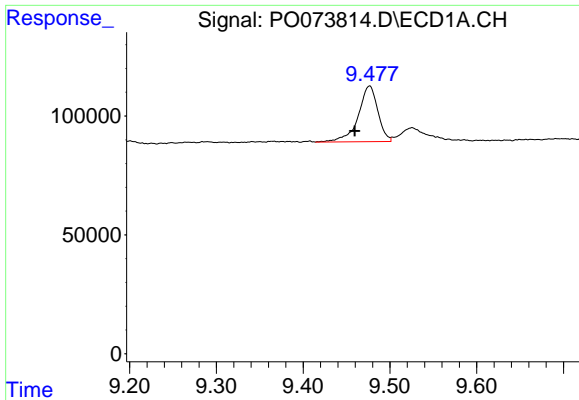
#37 AR-1262-2

R.T.: 9.142 min
 Delta R.T.: -0.006 min
 Response: 498515
 Conc: 38.87 ng/ml



#37 AR-1262-2

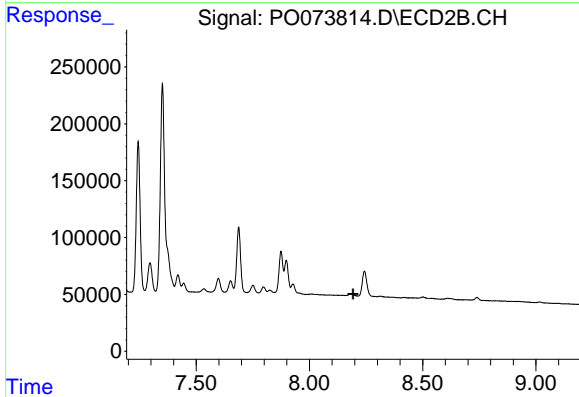
R.T.: 7.898 min
 Delta R.T.: -0.009 min
 Response: 265812
 Conc: 30.22 ng/ml



#38 AR-1262-3

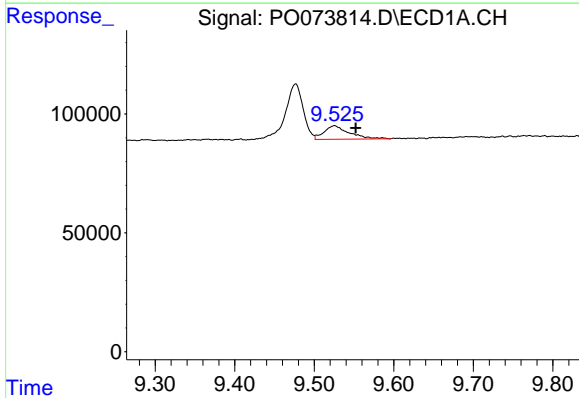
R.T.: 9.477 min
 Delta R.T.: 0.017 min
 Response: 367052
 Conc: 43.26 ng/ml

Instrument :
 ECD_O
 ClientSampleId :
 SB-57(6.5-7.0)DL



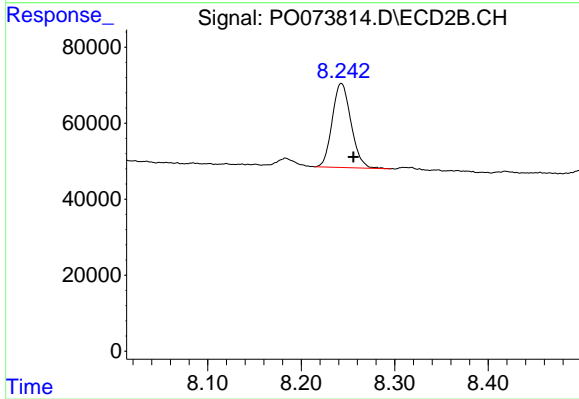
#38 AR-1262-3

R.T.: 0.000 min
 Exp R.T. : 8.192 min
 Response: 0
 Conc: N.D.



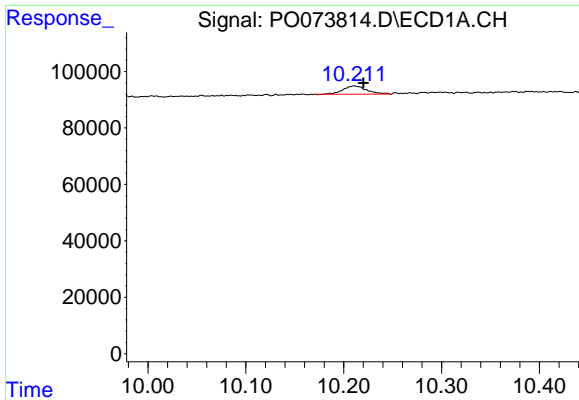
#39 AR-1262-4

R.T.: 9.525 min
 Delta R.T.: -0.027 min
 Response: 125522
 Conc: 37.53 ng/ml



#39 AR-1262-4

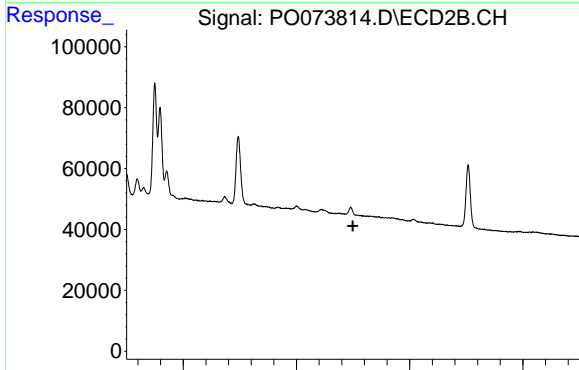
R.T.: 8.243 min
 Delta R.T.: -0.013 min
 Response: 309594
 Conc: 50.32 ng/ml



#40 AR-1262-5

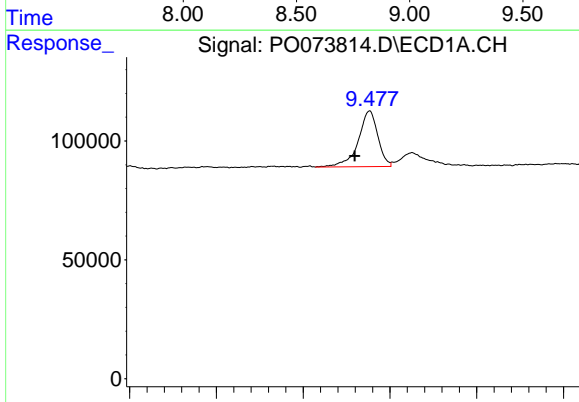
R.T.: 10.211 min
 Delta R.T.: -0.009 min
 Response: 48201
 Conc: 10.66 ng/ml

Instrument :
 ECD_O
 ClientSampleId :
 SB-57(6.5-7.0)DL



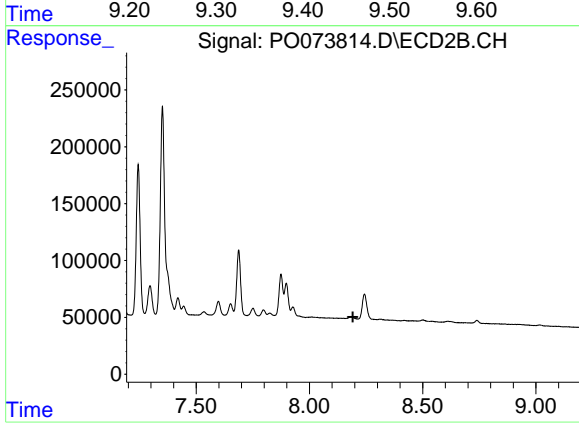
#40 AR-1262-5

R.T.: 0.000 min
 Exp R.T. : 8.750 min
 Response: 0
 Conc: N.D.



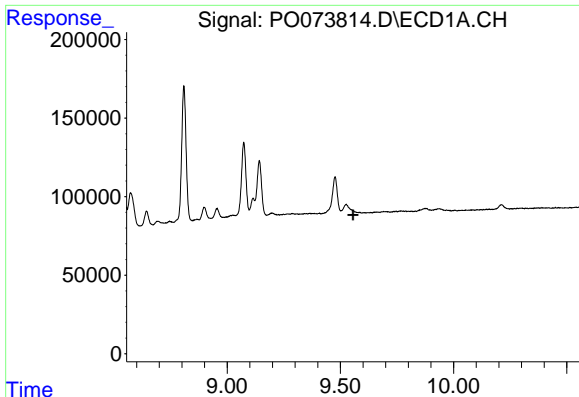
#41 AR-1268-1

R.T.: 9.477 min
 Delta R.T.: 0.017 min
 Response: 367052
 Conc: 25.77 ng/ml



#41 AR-1268-1

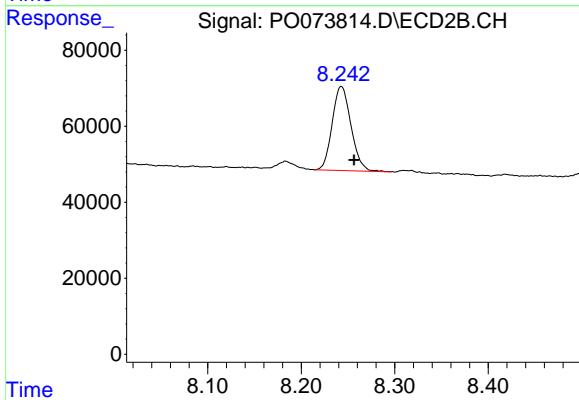
R.T.: 0.000 min
 Exp R.T. : 8.192 min
 Response: 0
 Conc: N.D.



#42 AR-1268-2

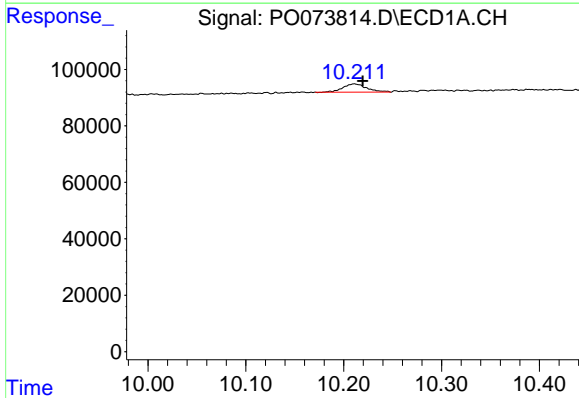
R.T.: 0.000 min
 Exp R.T.: 9.556 min
 Response: 0
 Conc: N.D.

Instrument :
 ECD_O
 ClientSampleId :
 SB-57(6.5-7.0)DL



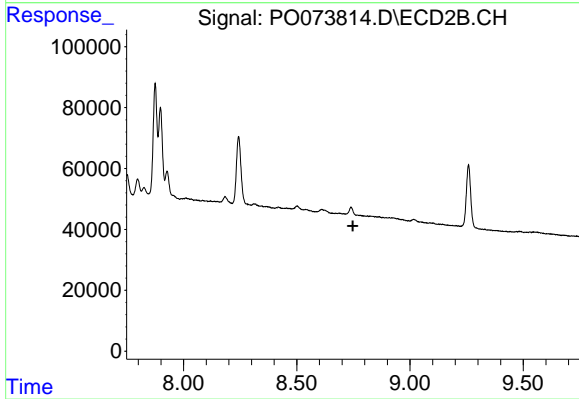
#42 AR-1268-2

R.T.: 8.243 min
 Delta R.T.: -0.014 min
 Response: 309594
 Conc: 37.58 ng/ml



#44 AR-1268-4

R.T.: 10.211 min
 Delta R.T.: -0.008 min
 Response: 48201
 Conc: 10.29 ng/ml



#44 AR-1268-4

R.T.: 0.000 min
 Exp R.T.: 8.748 min
 Response: 0
 Conc: N.D.