

Data Path : Z:\pestpcbsrv\HPCHEM1\ECD_0\Data\PO121521\
 Data File : PO083721.D
 Signal(s) : Signal #1: ECD1A.CH Signal #2: ECD2B.CH
 Acq On : 15 Dec 2021 21:40
 Operator : AJ\MA
 Sample : AR1254ICC1000
 Misc :
 ALS Vial : 20 Sample Multiplier: 1

Instrument :
 ECD_0
 ClientSampleId :
 AR1254ICC1000

Integration File signal 1: autoint1.e
 Integration File signal 2: autoint2.e
 Quant Time: Dec 16 03:00:42 2021
 Quant Method : Z:\pestpcbsrv\HPCHEM1\ECD_0\methods\PO121521.M
 Quant Title : GC EXTRACTABLES
 QLast Update : Thu Dec 16 02:57:58 2021
 Response via : Initial Calibration
 Integrator: ChemStation 6890 Scale Mode: Small noise peaks clipped

Volume Inj. : 2 µl
 Signal #1 Phase : ZB-MR1 Signal #2 Phase: ZB-MR2
 Signal #1 Info : 30Mx0.32mmx 0.50µ Signal #2 Info : 30M x 0.32mm x 0.25µm

Compound	RT#1	RT#2	Resp#1	Resp#2	ng/ml	ng/ml

System Monitoring Compounds						
1) SA Tetrachlo...	4.932	3.938	10076766	3092305	99.199	98.356
2) SA Decachlor...	10.999	9.232	6990347	2964771	97.656	97.770
Target Compounds						
26) L6 AR-1254-1	7.180	6.063	2911893	1683313	971.967	958.171
27) L6 AR-1254-2	7.411	6.224	4392419	1457004	970.928	958.121
28) L6 AR-1254-3	7.795	6.643	4479901	2258034	978.333	967.574
29) L6 AR-1254-4	8.092	6.884	3269008	1569074	976.985	964.527
30) L6 AR-1254-5	8.524	7.313	3428625	2091458	977.371	970.561

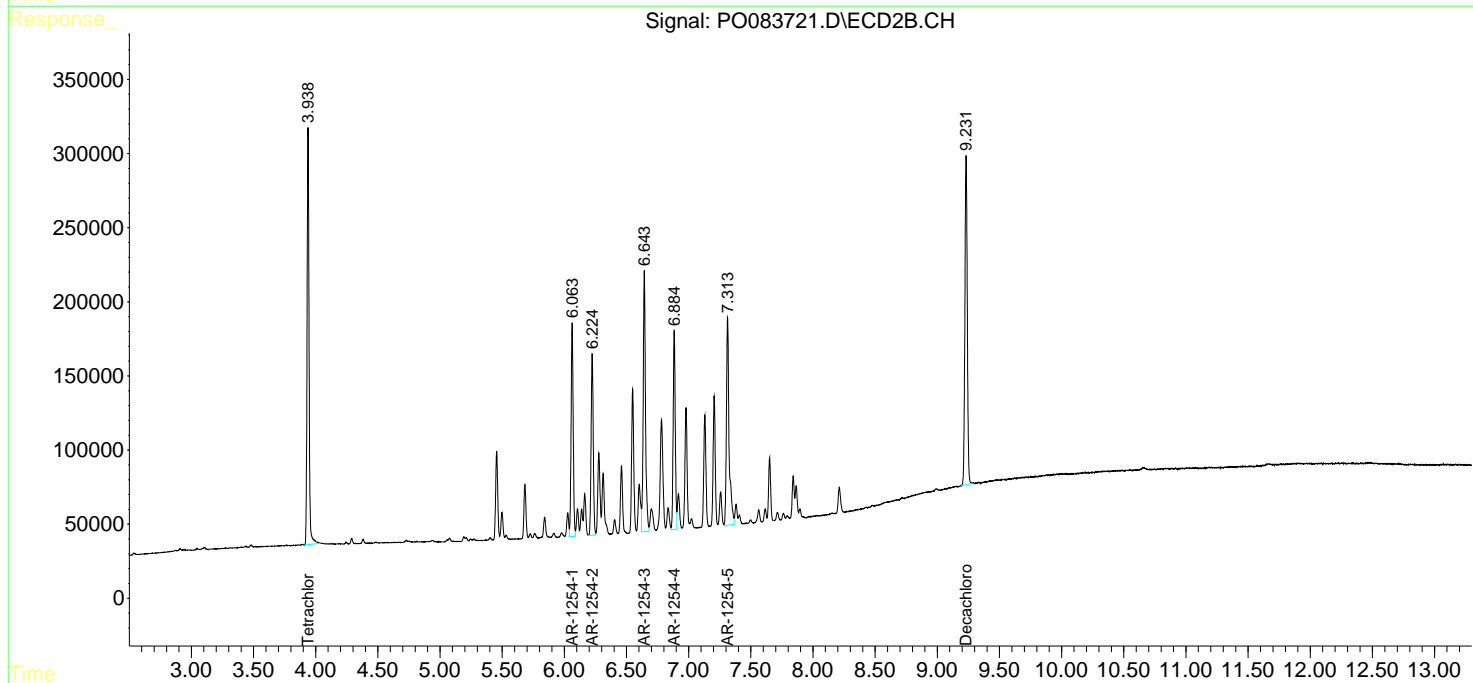
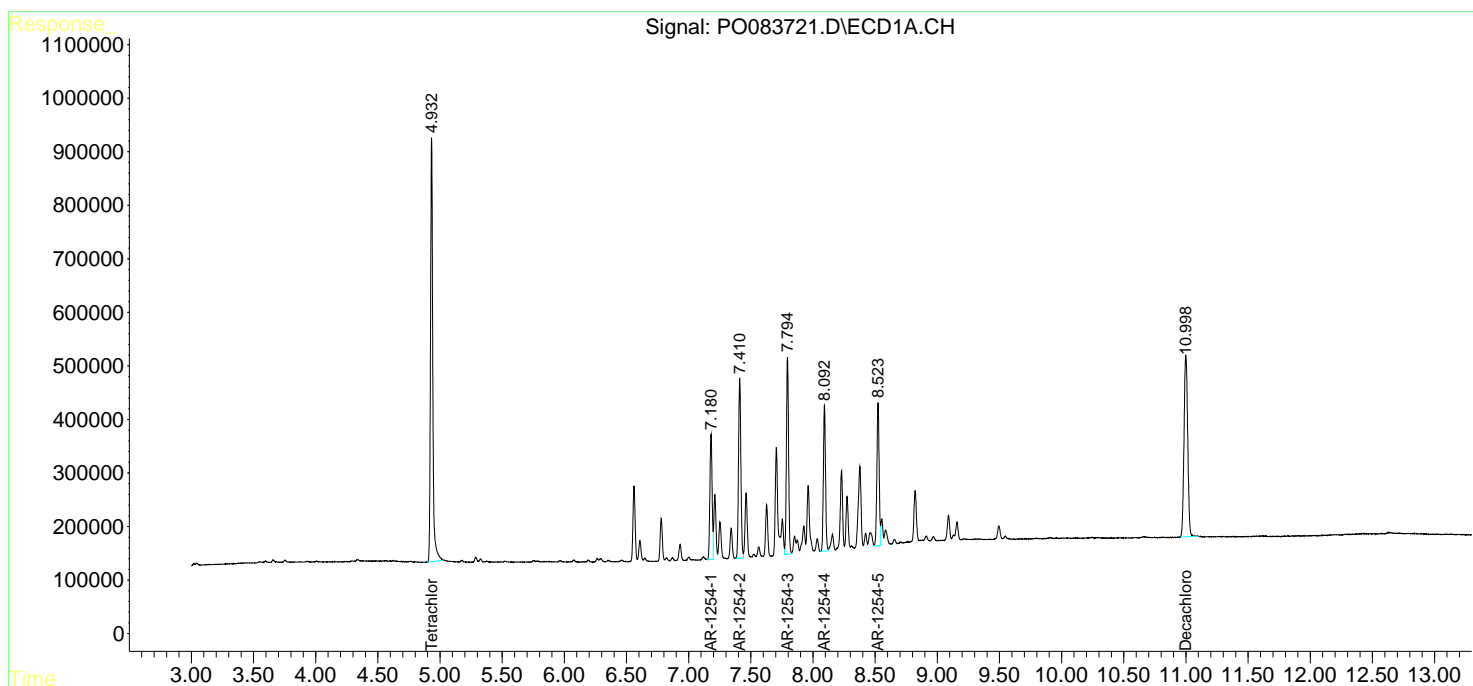
(f)=RT Delta > 1/2 Window (#)=Amounts differ by > 25% (m)=manual int.

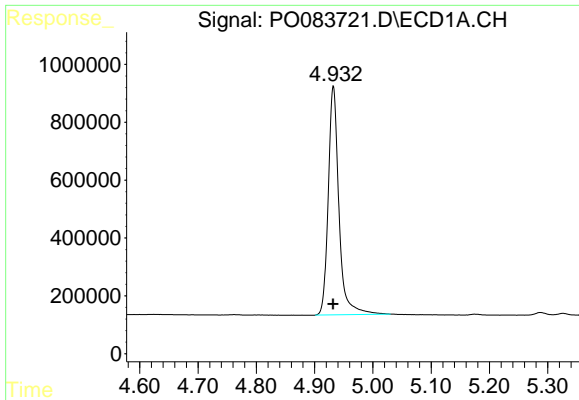
Data Path : Z:\pestpcbsrv\HPCHEM1\ECD_O\Data\PO121521\
 Data File : PO083721.D
 Signal(s) : Signal #1: ECD1A.CH Signal #2: ECD2B.CH
 Acq On : 15 Dec 2021 21:40
 Operator : AJ\MA
 Sample : AR1254ICC1000
 Misc :
 ALS Vial : 20 Sample Multiplier: 1

Instrument :
 ECD_O
 ClientSampleId :
 AR1254ICC1000

Integration File signal 1: autoint1.e
 Integration File signal 2: autoint2.e
 Quant Time: Dec 16 03:00:42 2021
 Quant Method : Z:\pestpcbsrv\HPCHEM1\ECD_O\methods\PO121521.M
 Quant Title : GC EXTRACTABLES
 QLast Update : Thu Dec 16 02:57:58 2021
 Response via : Initial Calibration
 Integrator: ChemStation 6890 Scale Mode: Small noise peaks clipped

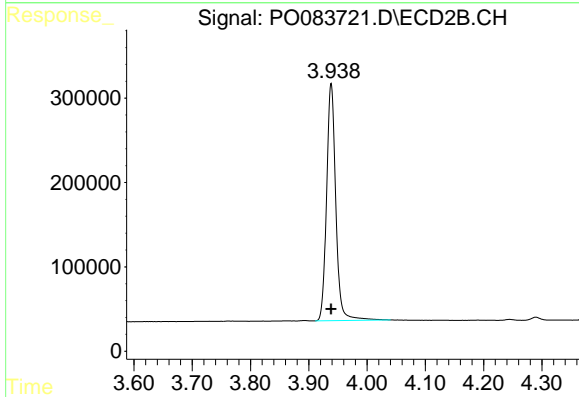
Volume Inj. : 2 µl
 Signal #1 Phase : ZB-MR1 Signal #2 Phase: ZB-MR2
 Signal #1 Info : 30Mx0.32mmx 0.50µ Signal #2 Info : 30M x 0.32mm x 0.25µm



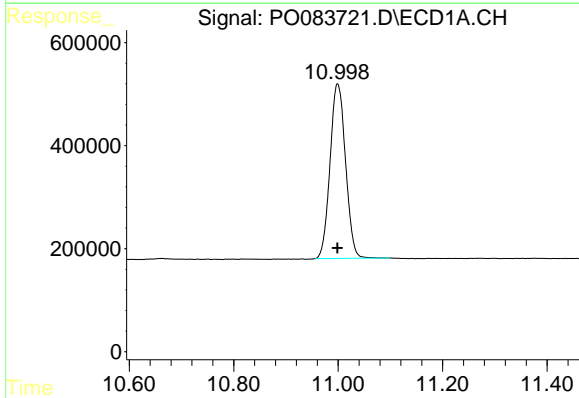


#1 Tetrachloro-m-xylene
 R.T.: 4.932 min
 Delta R.T.: 0.000 min
 Response: 10076766
 Conc: 99.20 ng/ml

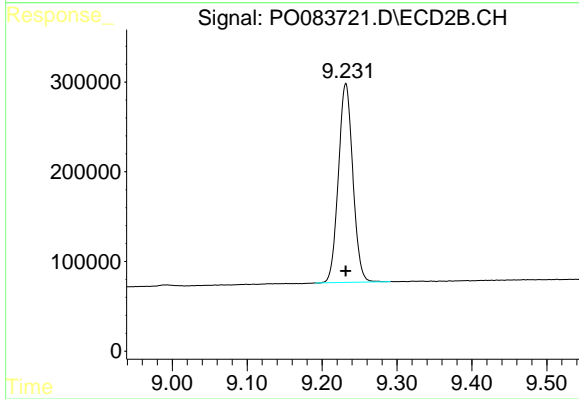
Instrument :
 ECD_O
 ClientSampleId :
 AR1254ICC1000



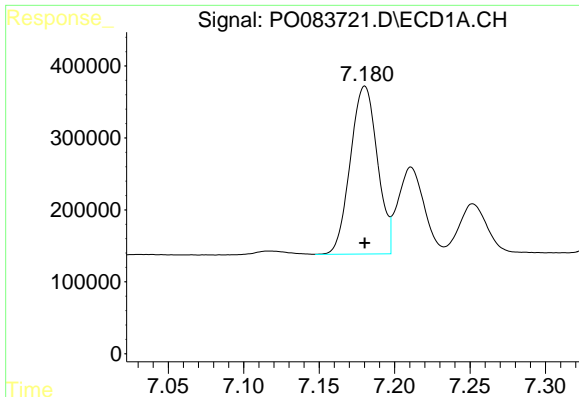
#1 Tetrachloro-m-xylene
 R.T.: 3.938 min
 Delta R.T.: 0.000 min
 Response: 3092305
 Conc: 98.36 ng/ml



#2 Decachlorobiphenyl
 R.T.: 10.999 min
 Delta R.T.: 0.000 min
 Response: 6990347
 Conc: 97.66 ng/ml



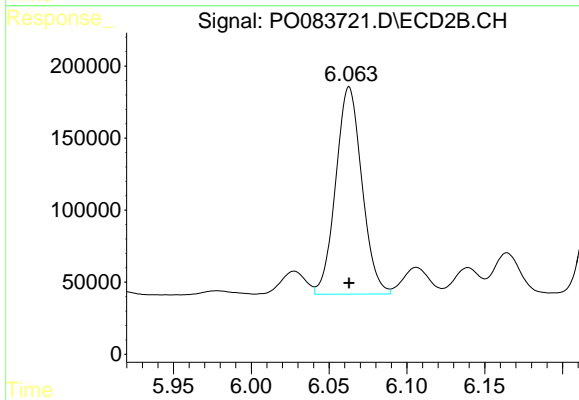
#2 Decachlorobiphenyl
 R.T.: 9.232 min
 Delta R.T.: 0.000 min
 Response: 2964771
 Conc: 97.77 ng/ml



#26 AR-1254-1

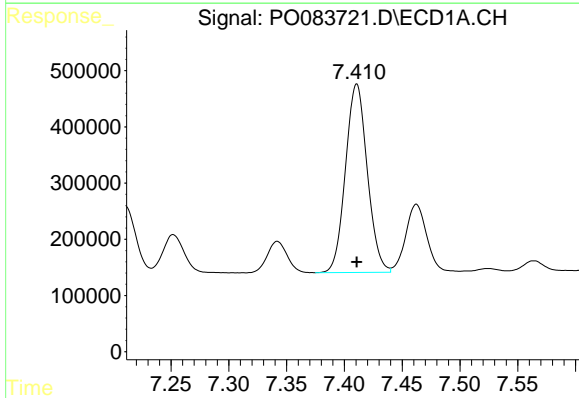
R.T.: 7.180 min
 Delta R.T.: 0.000 min
 Response: 2911893
 Conc: 971.97 ng/ml

Instrument :
 ECD_O
 ClientSampleId :
 AR1254ICC1000



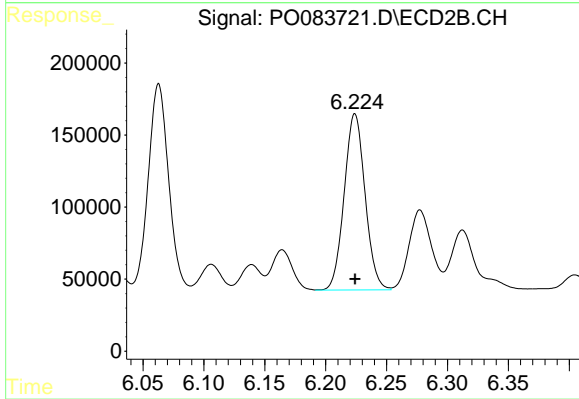
#26 AR-1254-1

R.T.: 6.063 min
 Delta R.T.: 0.000 min
 Response: 1683313
 Conc: 958.17 ng/ml



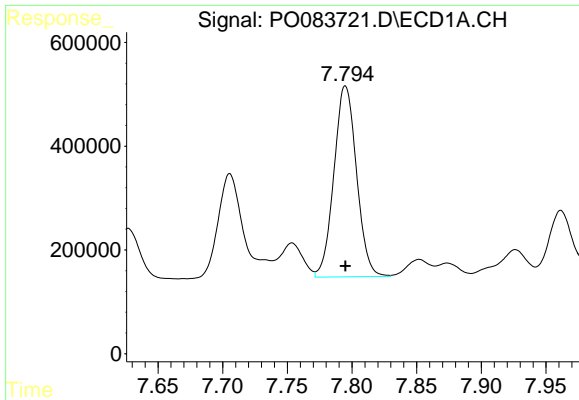
#27 AR-1254-2

R.T.: 7.411 min
 Delta R.T.: 0.000 min
 Response: 4392419
 Conc: 970.93 ng/ml



#27 AR-1254-2

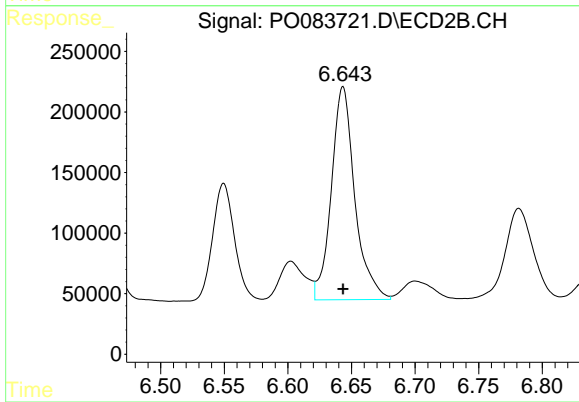
R.T.: 6.224 min
 Delta R.T.: 0.000 min
 Response: 1457004
 Conc: 958.12 ng/ml



#28 AR-1254-3

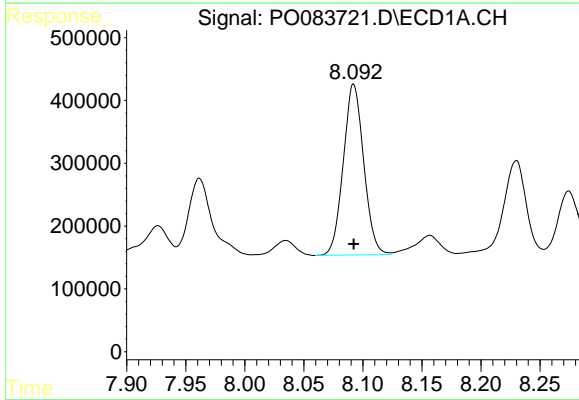
R.T.: 7.795 min
 Delta R.T.: 0.000 min
 Response: 4479901
 Conc: 978.33 ng/ml

Instrument :
 ECD_O
 ClientSampleId :
 AR1254ICC1000



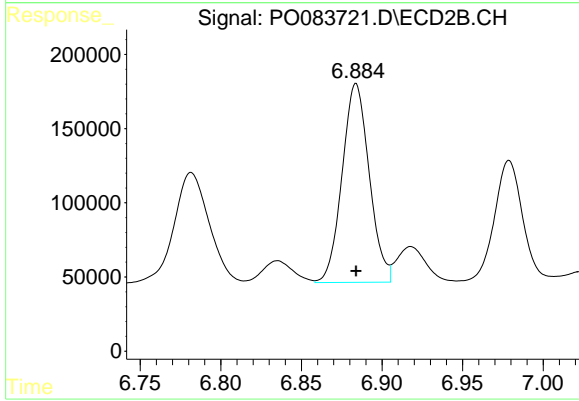
#28 AR-1254-3

R.T.: 6.643 min
 Delta R.T.: 0.000 min
 Response: 2258034
 Conc: 967.57 ng/ml



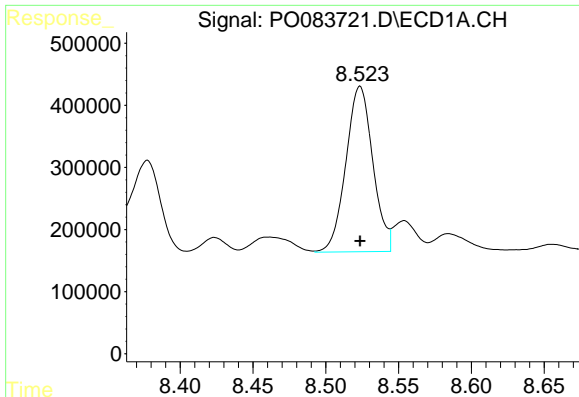
#29 AR-1254-4

R.T.: 8.092 min
 Delta R.T.: 0.000 min
 Response: 3269008
 Conc: 976.98 ng/ml



#29 AR-1254-4

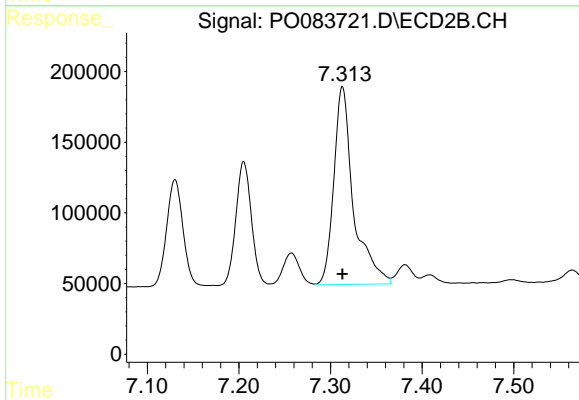
R.T.: 6.884 min
 Delta R.T.: 0.000 min
 Response: 1569074
 Conc: 964.53 ng/ml



#30 AR-1254-5

R.T.: 8.524 min
Delta R.T.: 0.000 min
Response: 3428625
Conc: 977.37 ng/ml

Instrument :
ECD_O
ClientSampleId :
AR1254ICC1000



#30 AR-1254-5

R.T.: 7.313 min
Delta R.T.: 0.000 min
Response: 2091458
Conc: 970.56 ng/ml