

Data Path : Z:\pestpcbsrv\HPCHEM1\ECD_0\Data\PO121522\
 Data File : PO091392.D
 Signal(s) : Signal #1: ECD1A.ch Signal #2: ECD2B.ch
 Acq On : 15 Dec 2022 13:42
 Operator : YP/AJ
 Sample : PB149661BS
 Misc :
 ALS Vial : 8 Sample Multiplier: 1

Instrument :
 ECD_0
 ClientSampleId :

Integration File signal 1: autoint1.e
 Integration File signal 2: autoint2.e
 Quant Time: Dec 15 21:03:08 2022
 Quant Method : Z:\pestpcbsrv\HPCHEM1\ECD_0\methods\PO112522.M
 Quant Title : GC EXTRACTABLES
 QLast Update : Mon Nov 28 11:25:59 2022
 Response via : Initial Calibration
 Integrator: ChemStation

Volume Inj. : 2 µl
 Signal #1 Phase : ZB-MR2 Signal #2 Phase: ZB-MR2
 Signal #1 Info : 30Mx0.32mmx 0.50µ Signal #2 Info : 30M x 0.32mm x 0.25µm

Compound	RT#1	RT#2	Resp#1	Resp#2	ng/ml	ng/ml

System Monitoring Compounds						
1) SA Tetrachlo...	4.296	3.472	63640699	20868368	18.822	19.883
2) SA Decachlor...	10.042	8.473	54417836	22257896	20.487	22.926
Target Compounds						
3) L1 AR-1016-1	5.411f	0.000	606479	0	5.389	N.D. #
4) L1 AR-1016-2	5.555f	0.000	152633	0	0.939	N.D. #
5) L1 AR-1016-3	5.555	0.000	152633	0	1.464	N.D. #
8) L2 AR-1221-1	4.530	0.000	2103347	0	51.486	N.D. #
9) L2 AR-1221-2	4.602	3.771	1187818	351379	39.161	35.340
10) L2 AR-1221-3	4.602f	0.000	1187818	0	12.911	N.D. #
13) L3 AR-1232-3	5.555f	0.000	152633	0	2.043	N.D. #
16) L4 AR-1242-1	5.411f	0.000	606479	0	6.795	N.D. #
17) L4 AR-1242-2	5.555f	0.000	152633	0	1.202	N.D. #
18) L4 AR-1242-3	5.555	0.000	152633	0	1.831	N.D. #
21) L5 AR-1248-1	5.411f	0.000	606479	0	8.514	N.D. #
27) L6 AR-1254-2	6.550	0.000	10195	0	0.054	N.D. #
28) L6 AR-1254-3	6.921	0.000	487001	0	2.598	N.D. #
29) L6 AR-1254-4	7.207	6.211f	26285	177080	0.190	3.619 #
30) L6 AR-1254-5	7.601f	0.000	130187	0	0.849	N.D. #
32) L7 AR-1260-2	7.370	6.211	374385	177080	2.145	2.593
33) L7 AR-1260-3	0.000	6.394	0	268104	N.D.	4.087 #
34) L7 AR-1260-4	7.938	0.000	154187	0	1.138	N.D. #
45) L9 AR-1268-5	0.000	8.228	0	133770	N.D.	0.395 #

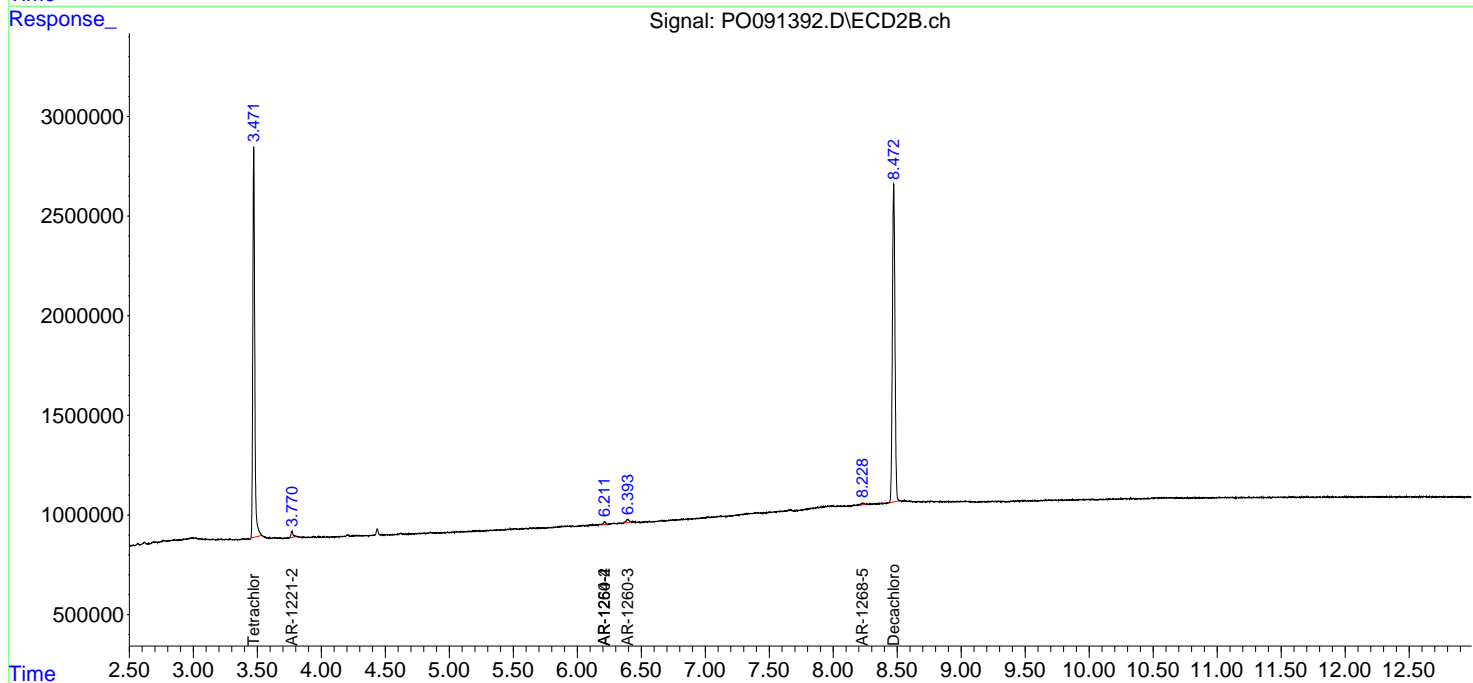
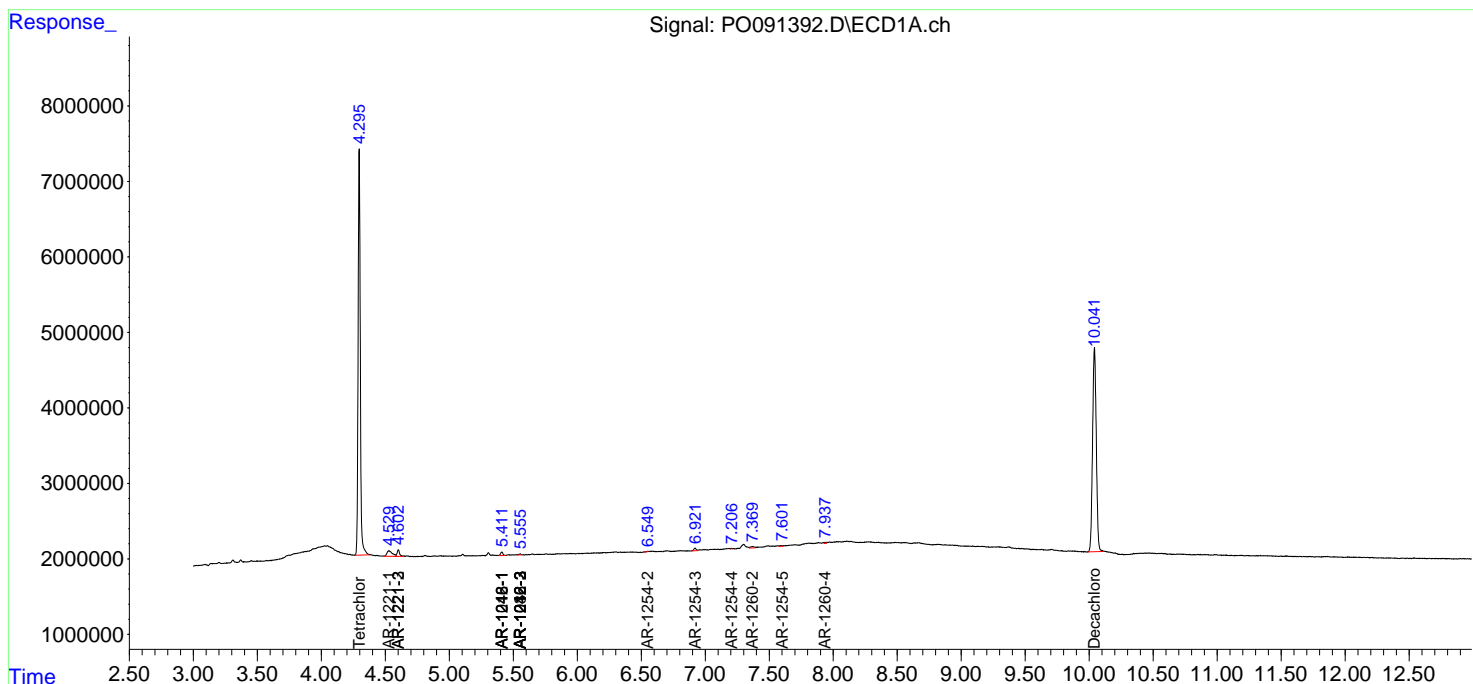
(f)=RT Delta > 1/2 Window (#)=Amounts differ by > 25% (m)=manual int.

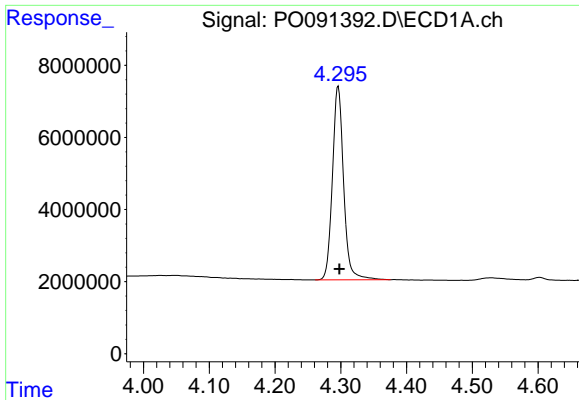
Data Path : Z:\pestpcbsrv\HPCHEM1\ECD_0\Data\PO121522\
 Data File : PO091392.D
 Signal(s) : Signal #1: ECD1A.ch Signal #2: ECD2B.ch
 Acq On : 15 Dec 2022 13:42
 Operator : YP/AJ
 Sample : PB149661BS
 Misc :
 ALS Vial : 8 Sample Multiplier: 1

Instrument :
 ECD_0
 ClientSampleId :

Integration File signal 1: autoint1.e
 Integration File signal 2: autoint2.e
 Quant Time: Dec 15 21:03:08 2022
 Quant Method : Z:\pestpcbsrv\HPCHEM1\ECD_0\methods\PO112522.M
 Quant Title : GC EXTRACTABLES
 QLast Update : Mon Nov 28 11:25:59 2022
 Response via : Initial Calibration
 Integrator: ChemStation

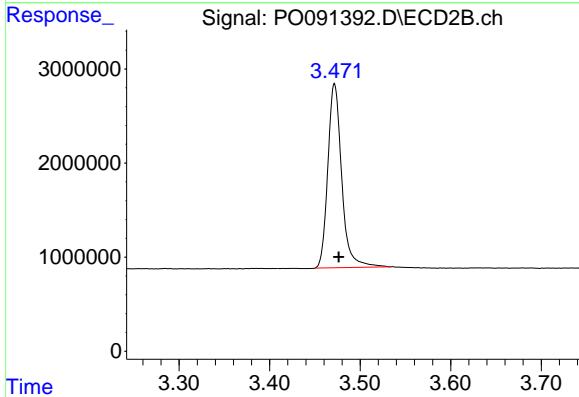
Volume Inj. : 2 µl
 Signal #1 Phase : ZB-MR1 Signal #2 Phase: ZB-MR2
 Signal #1 Info : 30Mx0.32mmx 0.50µm Signal #2 Info : 30M x 0.32mm x 0.25µm



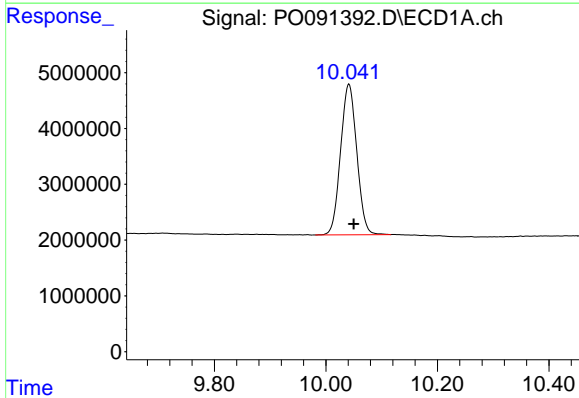


#1 Tetrachloro-m-xylene
R.T.: 4.296 min
Delta R.T.: -0.002 min
Response: 63640699
Conc: 18.82 ng/ml

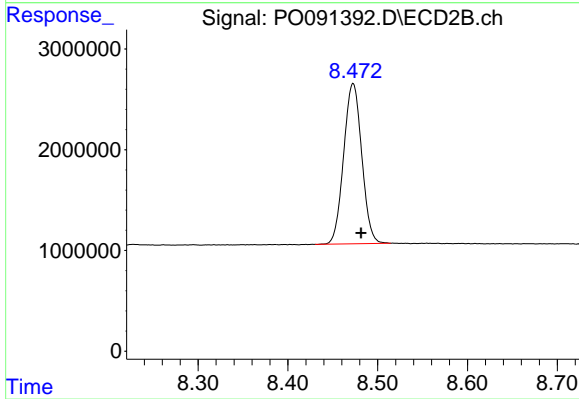
Instrument :
ECD_O
ClientSampleId :



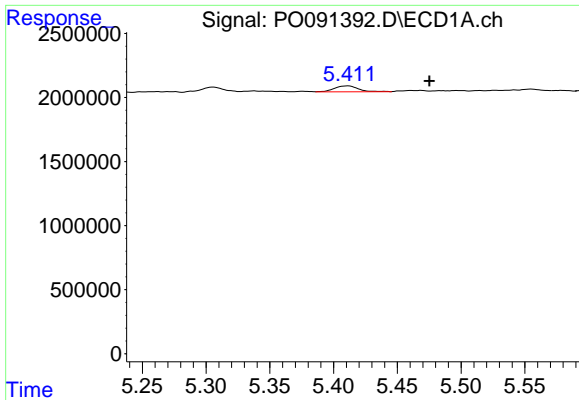
#1 Tetrachloro-m-xylene
R.T.: 3.472 min
Delta R.T.: -0.005 min
Response: 20868368
Conc: 19.88 ng/ml



#2 Decachlorobiphenyl
R.T.: 10.042 min
Delta R.T.: -0.008 min
Response: 54417836
Conc: 20.49 ng/ml



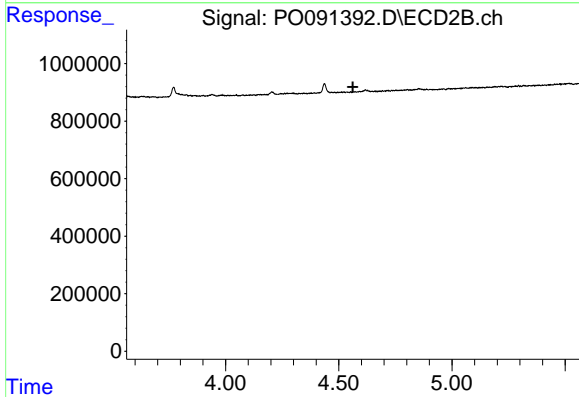
#2 Decachlorobiphenyl
R.T.: 8.473 min
Delta R.T.: -0.009 min
Response: 22257896
Conc: 22.93 ng/ml



#3 AR-1016-1

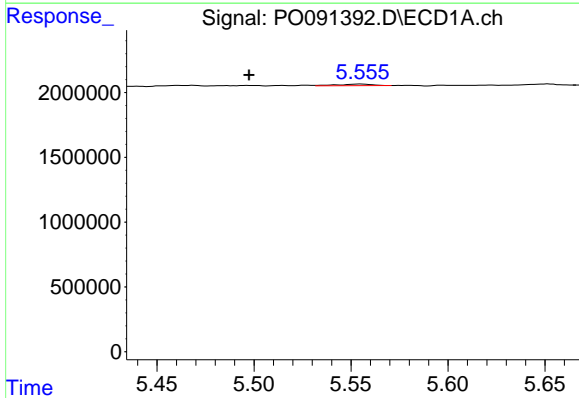
R.T.: 5.411 min
 Delta R.T.: -0.064 min
 Response: 606479
 Conc: 5.39 ng/ml

Instrument :
 ECD_O
 ClientSampleId :



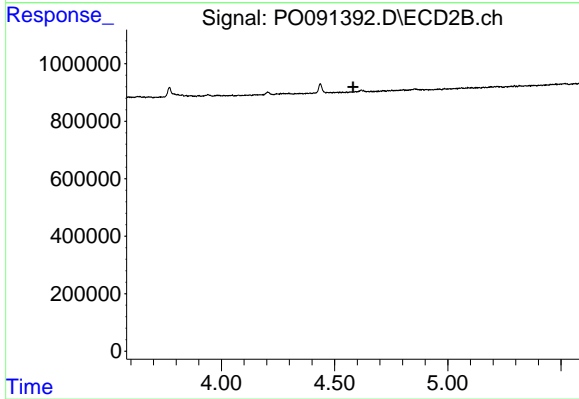
#3 AR-1016-1

R.T.: 0.000 min
 Exp R.T. : 4.563 min
 Response: 0
 Conc: N.D.



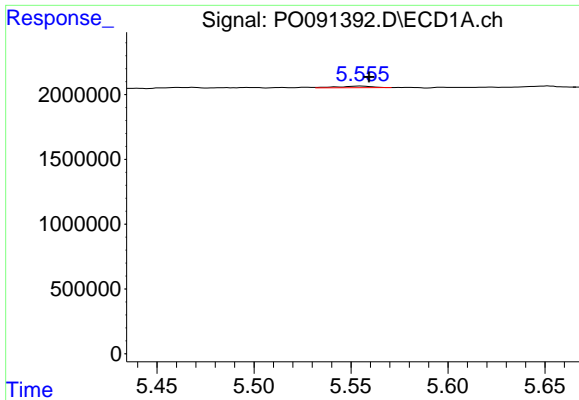
#4 AR-1016-2

R.T.: 5.555 min
 Delta R.T.: 0.058 min
 Response: 152633
 Conc: 0.94 ng/ml



#4 AR-1016-2

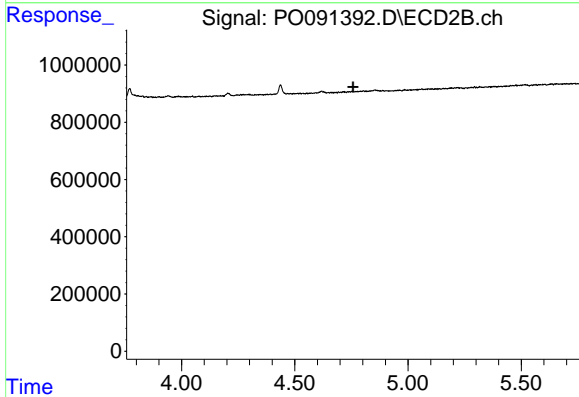
R.T.: 0.000 min
 Exp R.T. : 4.581 min
 Response: 0
 Conc: N.D.



#5 AR-1016-3

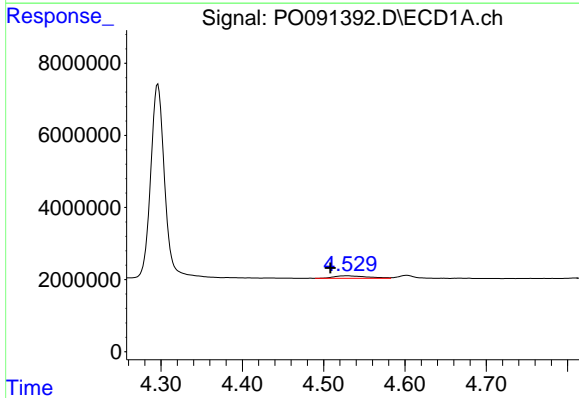
R.T.: 5.555 min
 Delta R.T.: -0.004 min
 Response: 152633
 Conc: 1.46 ng/ml

Instrument :
 ECD_O
 ClientSampleId :



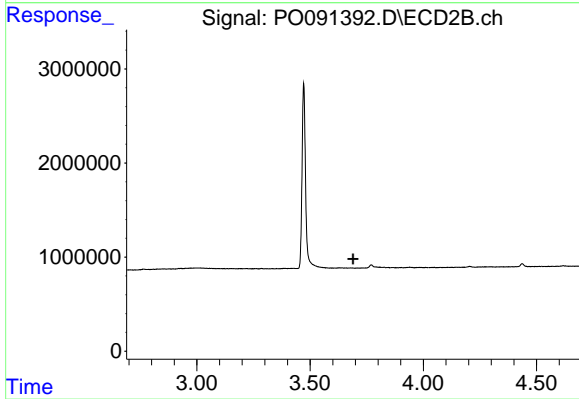
#5 AR-1016-3

R.T.: 0.000 min
 Exp R.T. : 4.757 min
 Response: 0
 Conc: N.D.



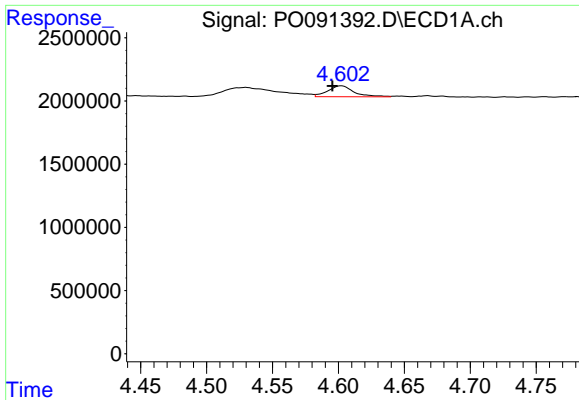
#8 AR-1221-1

R.T.: 4.530 min
 Delta R.T.: 0.022 min
 Response: 2103347
 Conc: 51.49 ng/ml



#8 AR-1221-1

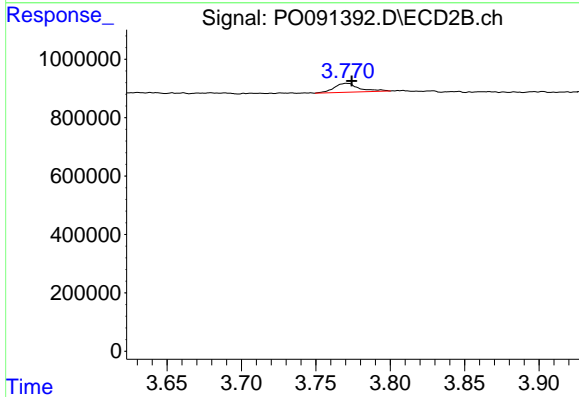
R.T.: 0.000 min
 Exp R.T. : 3.689 min
 Response: 0
 Conc: N.D.



#9 AR-1221-2

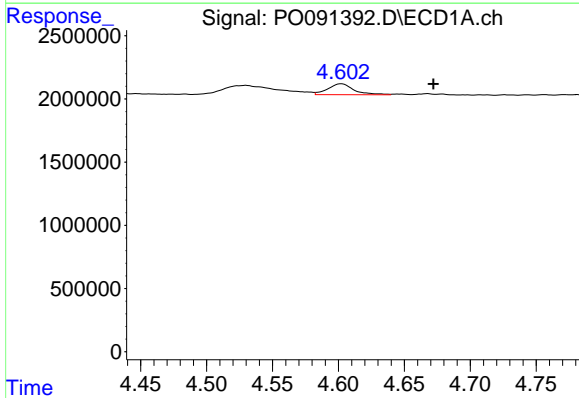
R.T.: 4.602 min
 Delta R.T.: 0.007 min
 Response: 1187818
 Conc: 39.16 ng/ml

Instrument :
 ECD_O
 ClientSampleId :



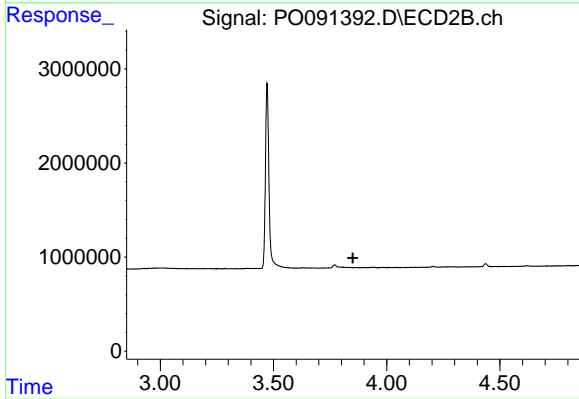
#9 AR-1221-2

R.T.: 3.771 min
 Delta R.T.: -0.004 min
 Response: 351379
 Conc: 35.34 ng/ml



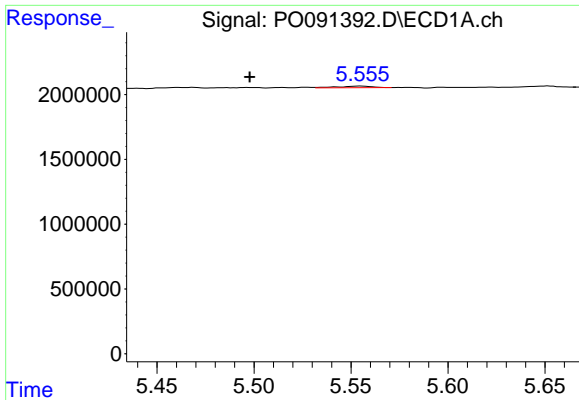
#10 AR-1221-3

R.T.: 4.602 min
 Delta R.T.: -0.070 min
 Response: 1187818
 Conc: 12.91 ng/ml



#10 AR-1221-3

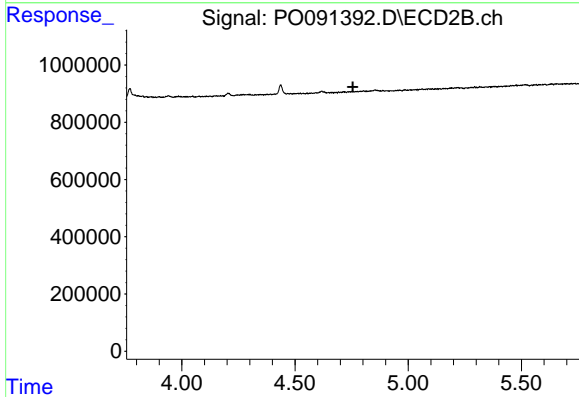
R.T.: 0.000 min
 Exp R.T. : 3.851 min
 Response: 0
 Conc: N.D.



#13 AR-1232-3

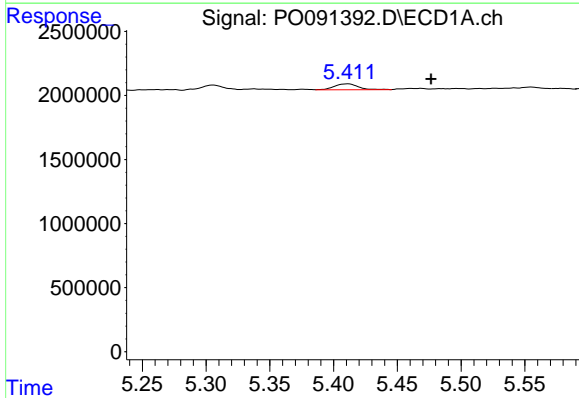
R.T.: 5.555 min
 Delta R.T.: 0.057 min
 Response: 152633
 Conc: 2.04 ng/ml

Instrument :
 ECD_O
 ClientSampleId :



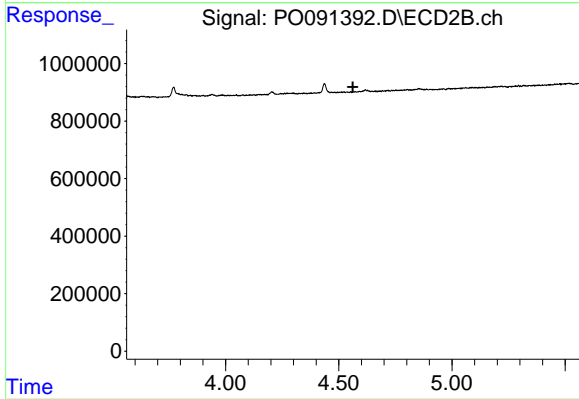
#13 AR-1232-3

R.T.: 0.000 min
 Exp R.T. : 4.756 min
 Response: 0
 Conc: N.D.



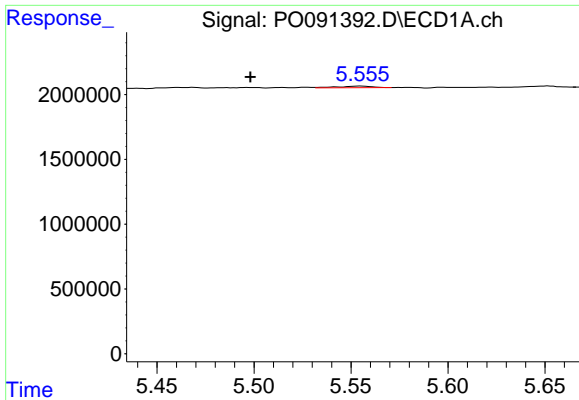
#16 AR-1242-1

R.T.: 5.411 min
 Delta R.T.: -0.065 min
 Response: 606479
 Conc: 6.79 ng/ml



#16 AR-1242-1

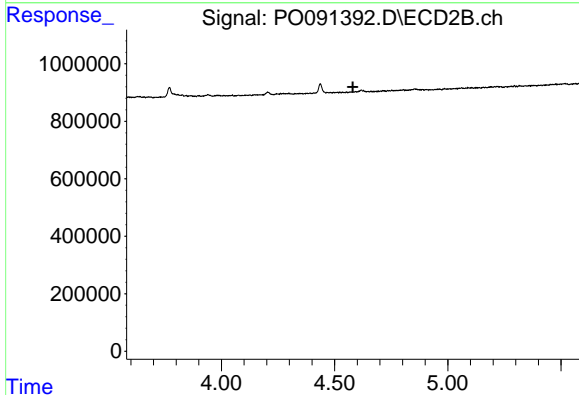
R.T.: 0.000 min
 Exp R.T. : 4.562 min
 Response: 0
 Conc: N.D.



#17 AR-1242-2

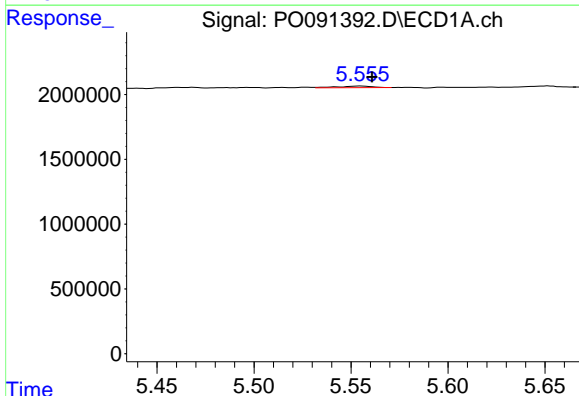
R.T.: 5.555 min
 Delta R.T.: 0.057 min
 Response: 152633
 Conc: 1.20 ng/ml

Instrument :
 ECD_O
 ClientSampleId :



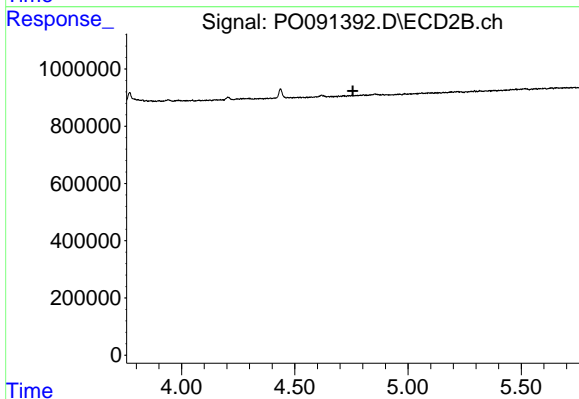
#17 AR-1242-2

R.T.: 0.000 min
 Exp R.T. : 4.580 min
 Response: 0
 Conc: N.D.



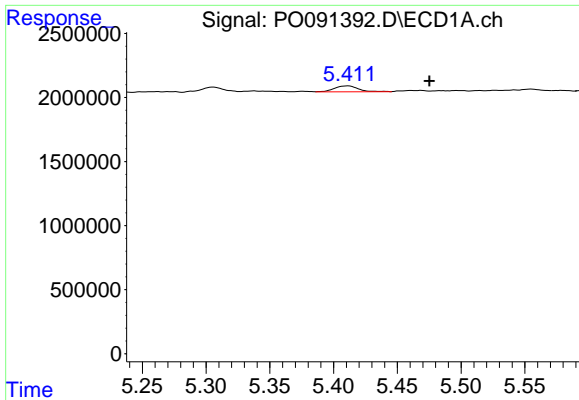
#18 AR-1242-3

R.T.: 5.555 min
 Delta R.T.: -0.006 min
 Response: 152633
 Conc: 1.83 ng/ml



#18 AR-1242-3

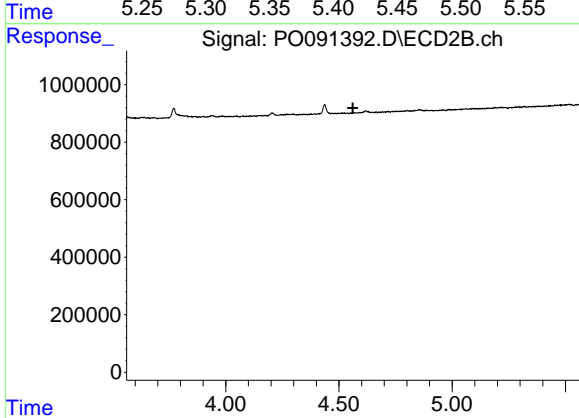
R.T.: 0.000 min
 Exp R.T. : 4.756 min
 Response: 0
 Conc: N.D.



#21 AR-1248-1

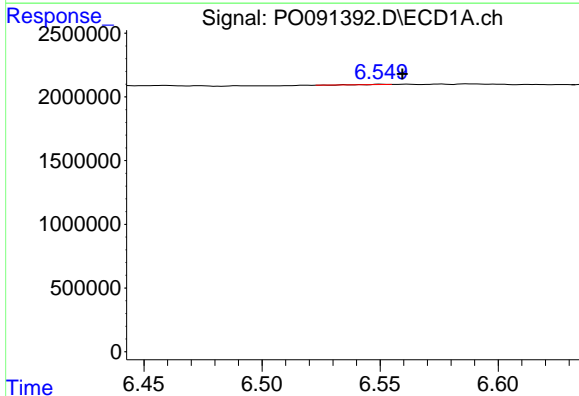
R.T.: 5.411 min
 Delta R.T.: -0.064 min
 Response: 606479
 Conc: 8.51 ng/ml

Instrument :
 ECD_O
 ClientSampleId :



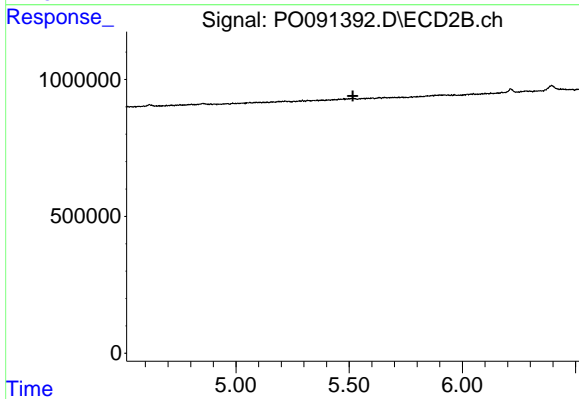
#21 AR-1248-1

R.T.: 0.000 min
 Exp R.T. : 4.562 min
 Response: 0
 Conc: N.D.



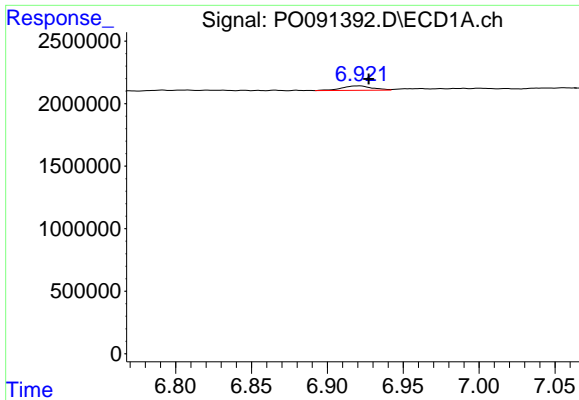
#27 AR-1254-2

R.T.: 6.550 min
 Delta R.T.: -0.009 min
 Response: 10195
 Conc: 0.05 ng/ml



#27 AR-1254-2

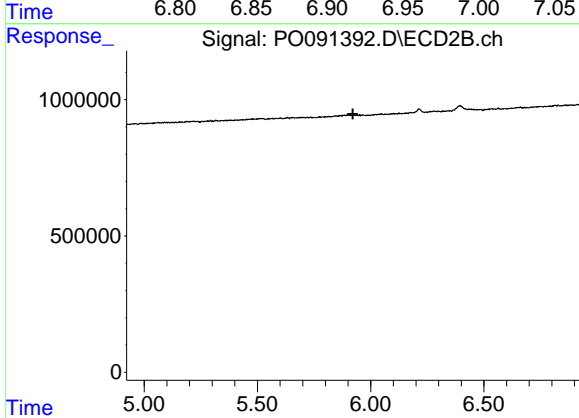
R.T.: 0.000 min
 Exp R.T. : 5.517 min
 Response: 0
 Conc: N.D.



#28 AR-1254-3

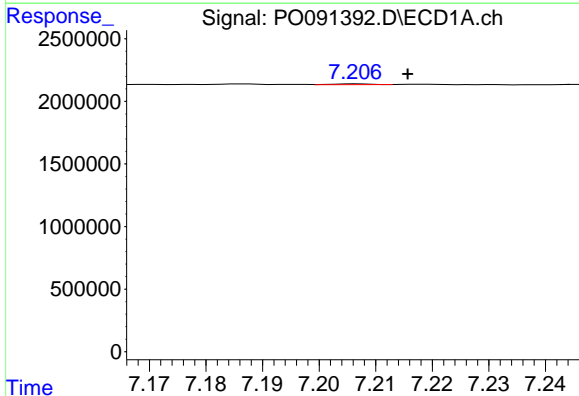
R.T.: 6.921 min
 Delta R.T.: -0.006 min
 Response: 487001
 Conc: 2.60 ng/ml

Instrument :
 ECD_O
 ClientSampleId :



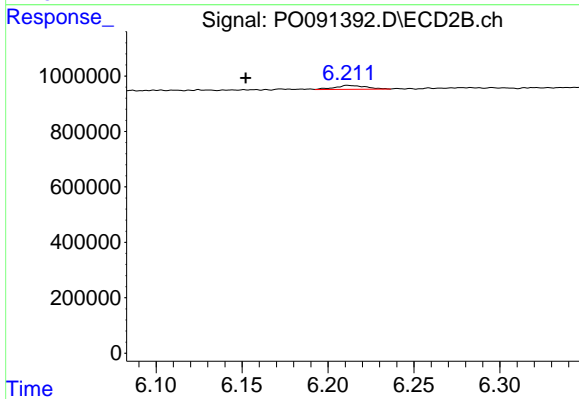
#28 AR-1254-3

R.T.: 0.000 min
 Exp R.T. : 5.922 min
 Response: 0
 Conc: N.D.



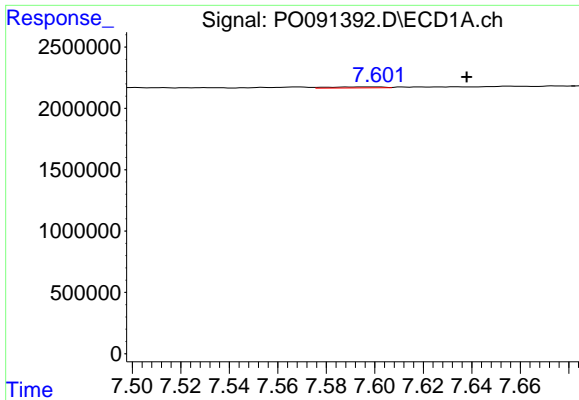
#29 AR-1254-4

R.T.: 7.207 min
 Delta R.T.: -0.009 min
 Response: 26285
 Conc: 0.19 ng/ml



#29 AR-1254-4

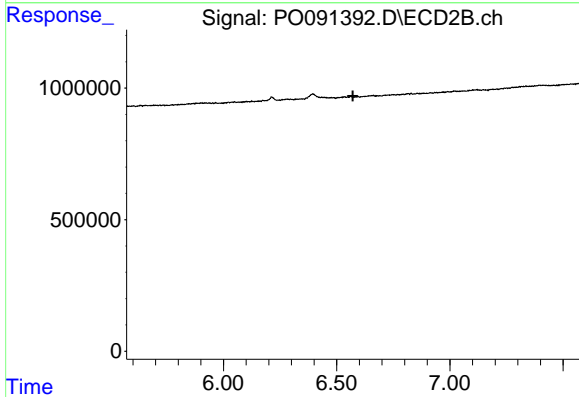
R.T.: 6.211 min
 Delta R.T.: 0.059 min
 Response: 177080
 Conc: 3.62 ng/ml



#30 AR-1254-5

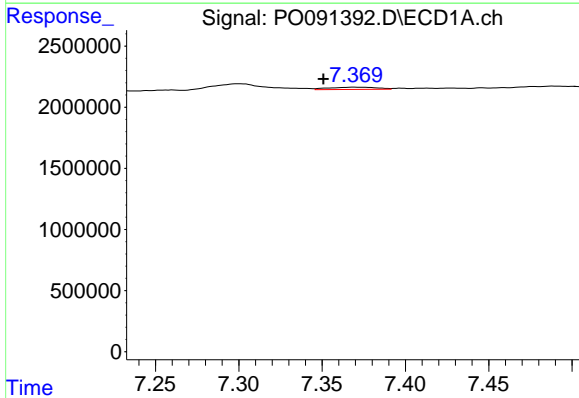
R.T.: 7.601 min
 Delta R.T.: -0.037 min
 Response: 130187
 Conc: 0.85 ng/ml

Instrument :
 ECD_O
 ClientSampleId :



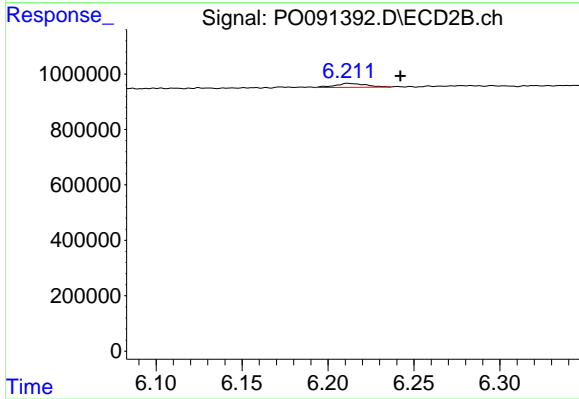
#30 AR-1254-5

R.T.: 0.000 min
 Exp R.T. : 6.572 min
 Response: 0
 Conc: N.D.



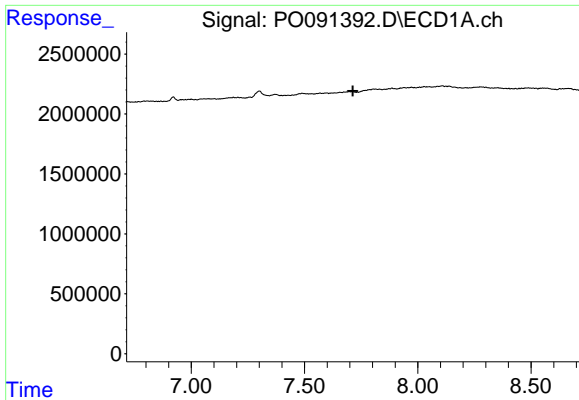
#32 AR-1260-2

R.T.: 7.370 min
 Delta R.T.: 0.019 min
 Response: 374385
 Conc: 2.14 ng/ml



#32 AR-1260-2

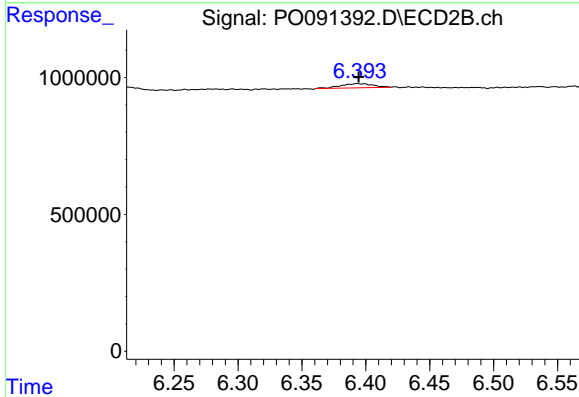
R.T.: 6.211 min
 Delta R.T.: -0.031 min
 Response: 177080
 Conc: 2.59 ng/ml



#33 AR-1260-3

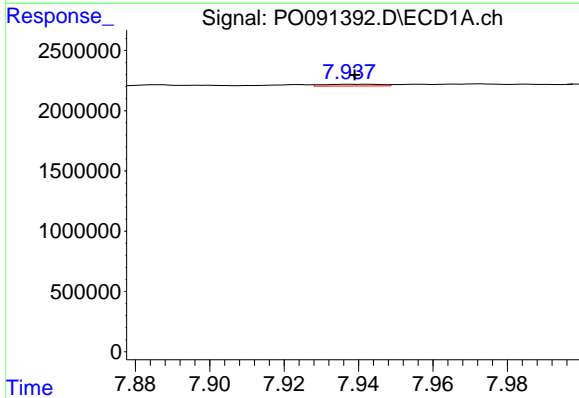
R.T.: 0.000 min
 Exp R.T.: 7.713 min
 Response: 0
 Conc: N.D.

Instrument :
 ECD_O
 ClientSampleId :



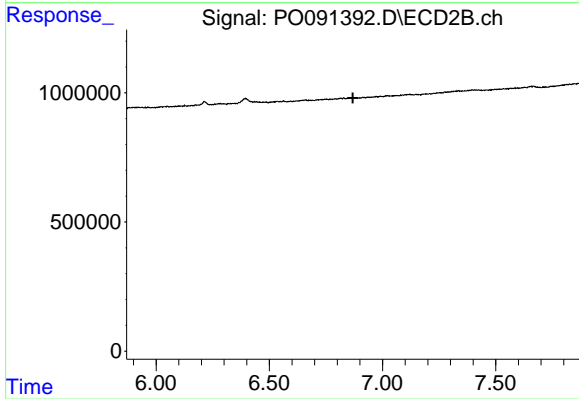
#33 AR-1260-3

R.T.: 6.394 min
 Delta R.T.: 0.000 min
 Response: 268104
 Conc: 4.09 ng/ml



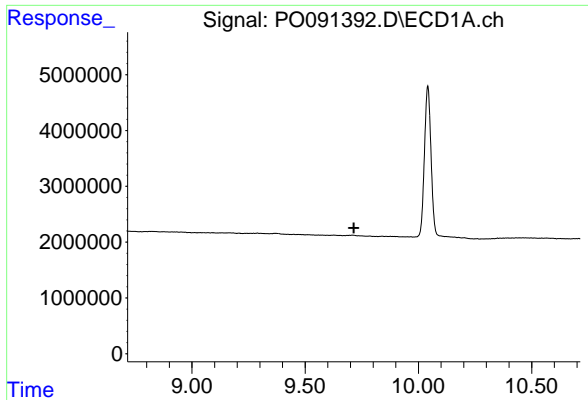
#34 AR-1260-4

R.T.: 7.938 min
 Delta R.T.: -0.001 min
 Response: 154187
 Conc: 1.14 ng/ml



#34 AR-1260-4

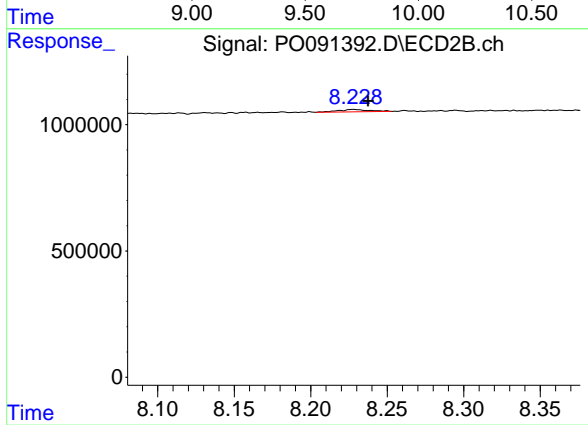
R.T.: 0.000 min
 Exp R.T.: 6.869 min
 Response: 0
 Conc: N.D.



#45 AR-1268-5

R.T.: 0.000 min
 Exp R.T.: 9.714 min
 Response: 0
 Conc: N.D.

Instrument :
 ECD_O
 ClientSampleId :



#45 AR-1268-5

R.T.: 8.228 min
 Delta R.T.: -0.010 min
 Response: 133770
 Conc: 0.40 ng/ml