

Data Path : Z:\pestpcbsrv\HPCHEM1\ECD_0\Data\PO112522\
 Data File : PO091403.D
 Signal(s) : Signal #1: ECD1A.ch Signal #2: ECD2B.ch
 Acq On : 15 Dec 2022 17:46
 Operator : YP/AJ
 Sample : AR1248CCC500
 Misc :
 ALS Vial : 5 Sample Multiplier: 1

Instrument :
 ECD_0
 ClientSampleId :

Integration File signal 1: autoint1.e
 Integration File signal 2: autoint2.e
 Quant Time: Dec 15 21:12:44 2022
 Quant Method : Z:\pestpcbsrv\HPCHEM1\ECD_0\methods\PO112522.M
 Quant Title : GC EXTRACTABLES
 QLast Update : Mon Nov 28 11:25:59 2022
 Response via : Initial Calibration
 Integrator: ChemStation

Volume Inj. : 2 µl
 Signal #1 Phase : ZB-MR1 Signal #2 Phase: ZB-MR2
 Signal #1 Info : 30Mx0.32mmx 0.50µ Signal #2 Info : 30M x 0.32mm x 0.25µm

Compound	RT#1	RT#2	Resp#1	Resp#2	ng/ml	ng/ml
System Monitoring Compounds						
1) SA Tetrachlo...	4.296	3.473	162.7E6	56189324	48.106	53.536
2) SA Decachlor...	10.040	8.472	116.1E6	49094883	43.692	50.568
Target Compounds						
3) L1 AR-1016-1	5.472	4.558	32432450	11966925	288.204	324.729
4) L1 AR-1016-2	5.494	4.576	38909767	12479803	239.329	242.189
5) L1 AR-1016-3	5.556	4.752	20627188	8300600	197.844	304.996 #
6) L1 AR-1016-4	5.654	4.795	21195837	16286526	261.572	704.572 #
7) L1 AR-1016-5	5.952	5.008	48554039	19862266	553.672	673.374
8) L2 AR-1221-1	4.500	3.685	987965	338312	24.184	25.668
9) L2 AR-1221-2	4.600	3.771	3201803	1016704	105.560	102.256
10) L2 AR-1221-3	4.669	3.847	5586785	1846704	60.726	59.461
11) L3 AR-1232-1	4.669	3.847	5586785	1846704	77.647	77.290
12) L3 AR-1232-2	5.202	4.576	16687699	12479803	385.190	516.739 #
13) L3 AR-1232-3	5.494	4.752	38909767	8300600	520.735	655.677 #
14) L3 AR-1232-4	5.654	4.836	21195837	17338421	565.579	1434.394 #
15) L3 AR-1232-5	5.748	5.008	43315239	19862266	1448.495	1468.540
16) L4 AR-1242-1	5.472	4.558	32432450	11966925	363.359	412.132
17) L4 AR-1242-2	5.494	4.576	38909767	12479803	306.452	309.595
18) L4 AR-1242-3	5.556	4.752	20627188	8300600	247.446	396.917 #
19) L4 AR-1242-4	5.654	4.836	21195837	17338421	333.657	759.319 #
20) L4 AR-1242-5	6.397	5.361	50483672	27239913	738.809	965.436 #
21) L5 AR-1248-1	5.472	4.558	32432450	11966925	455.300	508.673
22) L5 AR-1248-2	5.748	4.795	43315239	16286526	408.599	497.452
23) L5 AR-1248-3	5.952	4.836	48554039	17338421	412.589	510.858
24) L5 AR-1248-4	6.358	5.008	51348002	19862266	419.894	497.772
25) L5 AR-1248-5	6.397	5.402	50483672	18945877	440.150	528.549
26) L6 AR-1254-1	6.331	5.361	39279647	27239913	312.758	464.791 #
27) L6 AR-1254-2	6.554	5.509	51663830	9032068	273.995	169.234 #
28) L6 AR-1254-3	6.921	5.913	28737165	12937609	153.316	158.799
29) L6 AR-1254-4	7.208	6.144	19284758	8104332	139.603	165.640
30) L6 AR-1254-5	7.630	6.563	5237213	2447029	34.135	32.826
31) L7 AR-1260-1	7.086	6.057	4822113	6382804	31.433	110.234 #
32) L7 AR-1260-2	7.345	6.235	3667947	1626799	21.015	23.823
33) L7 AR-1260-3	7.705	6.386	2392309	1946035	21.045	29.668 #
34) L7 AR-1260-4	7.920	6.860	4370376	338861	32.252	7.095 #
35) L7 AR-1260-5	8.250	7.105	1169388	610345	4.604	5.614
36) L8 AR-1262-1	7.705	6.600	2392309	234953	13.093	3.126 #
37) L8 AR-1262-2	8.250	7.105	1169388	610345	3.780	4.795 #
38) L8 AR-1262-3	8.566	7.391	1399131	456218	6.489	8.657 #
39) L8 AR-1262-4	8.648	7.453	364875	663001	3.666	6.981 #
40) L8 AR-1262-5	9.292	7.952	902786	262581	7.821	5.757 #
41) L9 AR-1268-1	8.566	7.391	1399131	456218	3.800	3.058

Data Path : Z:\pestpcbsrv\HPCHEM1\ECD_0\Data\PO121522\
 Data File : PO091403.D
 Signal(s) : Signal #1: ECD1A.ch Signal #2: ECD2B.ch
 Acq On : 15 Dec 2022 17:46
 Operator : YP/AJ
 Sample : AR1248CCC500
 Misc :
 ALS Vial : 5 Sample Multiplier: 1

Instrument :
 ECD_0
 ClientSampleId :

Integration File signal 1: autoint1.e
 Integration File signal 2: autoint2.e
 Quant Time: Dec 15 21:12:44 2022
 Quant Method : Z:\pestpcbsrv\HPCHEM1\ECD_0\methods\PO112522.M
 Quant Title : GC EXTRACTABLES
 QLast Update : Mon Nov 28 11:25:59 2022
 Response via : Initial Calibration
 Integrator: ChemStation

Volume Inj. : 2 µl
 Signal #1 Phase : ZB-MR1 Signal #2 Phase: ZB-MR2
 Signal #1 Info : 30Mx0.32mmx 0.50µ Signal #2 Info : 30M x 0.32mm x 0.25µm

	Compound	RT#1	RT#2	Resp#1	Resp#2	ng/ml	ng/ml
42)	L9 AR-1268-2	8.648	7.453	364875	663001	1.097	4.934 #
44)	L9 AR-1268-4	9.292	7.952	902786	262581	7.313	5.323 #
45)	L9 AR-1268-5	9.703	8.229	639030	425472	0.702	1.257 #

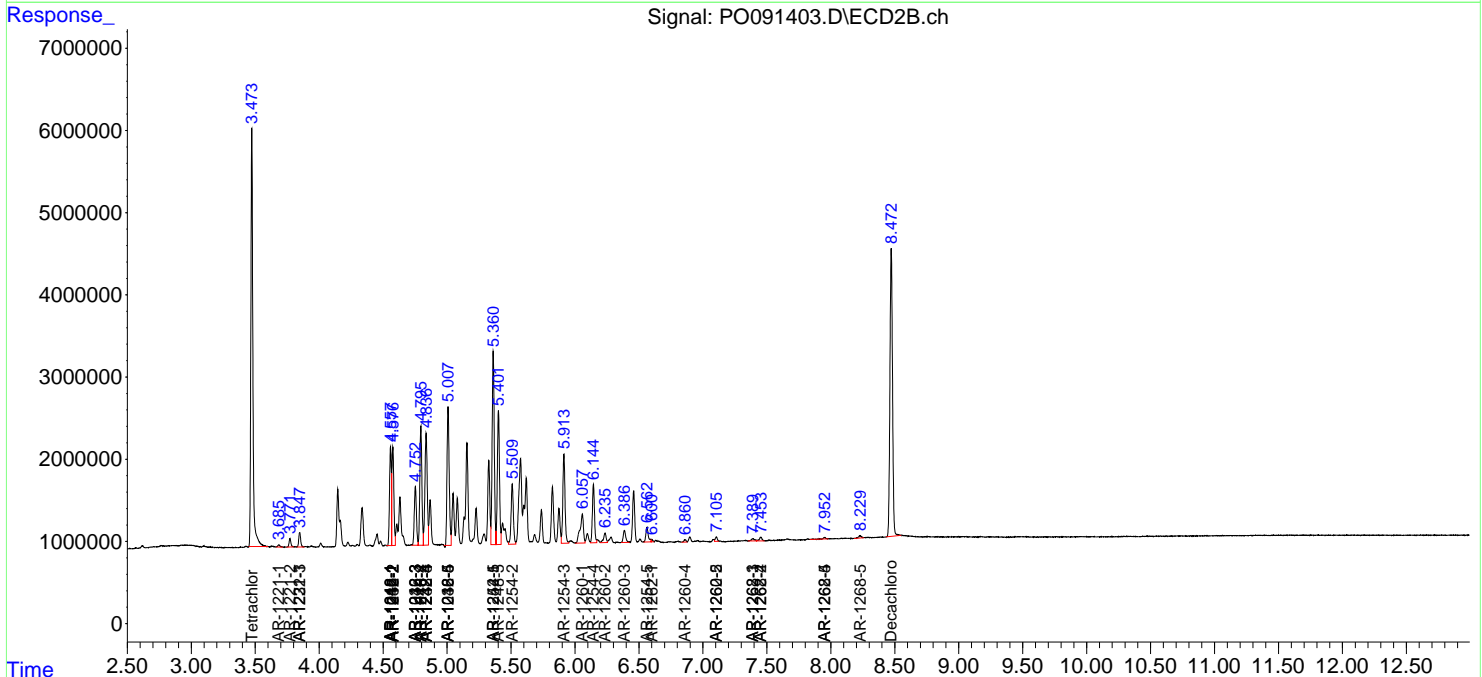
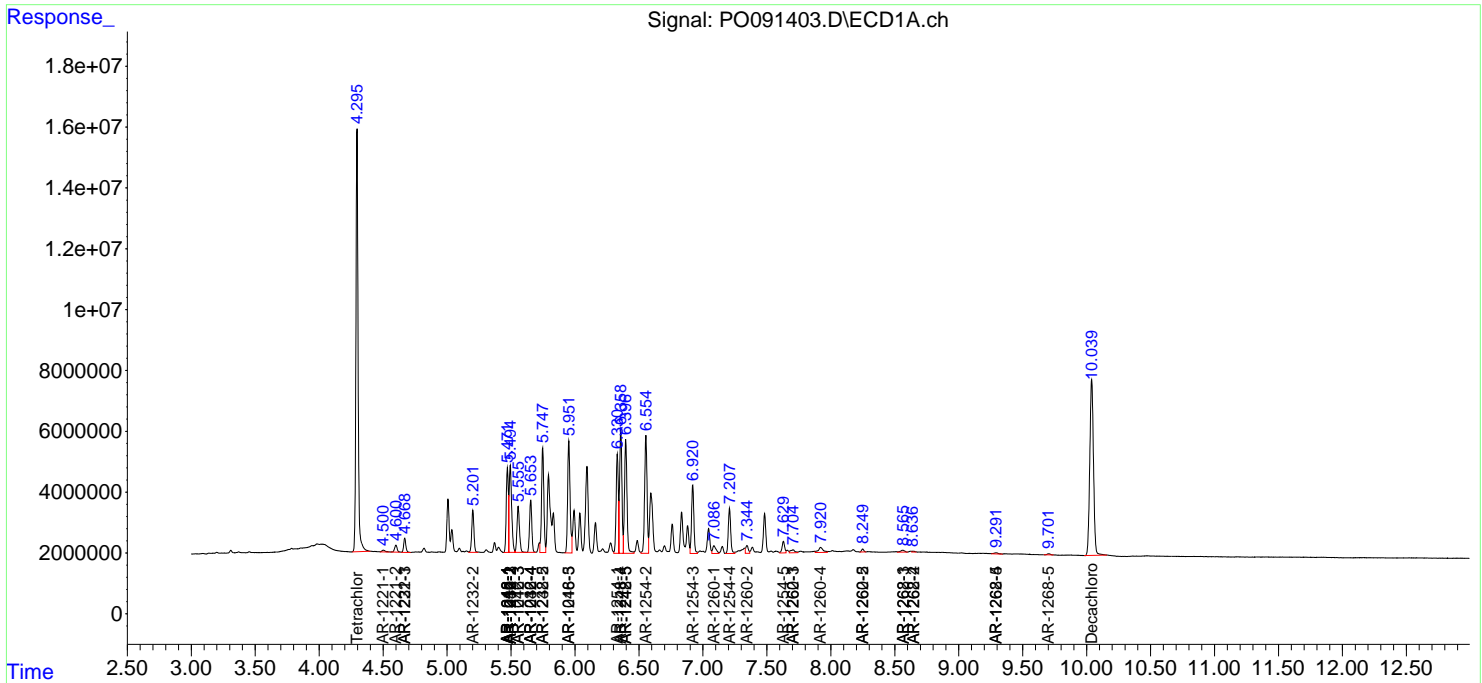
(f)=RT Delta > 1/2 Window (#)=Amounts differ by > 25% (m)=manual int.

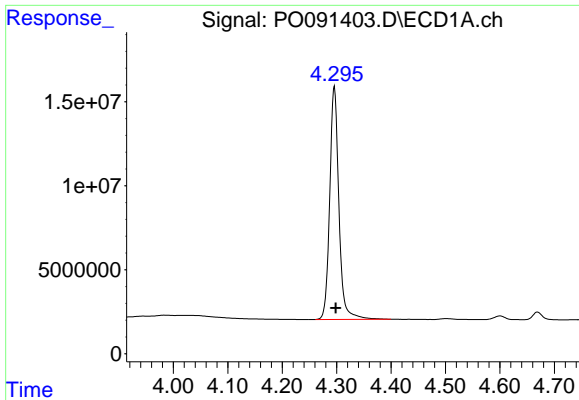
Data Path : Z:\pestpcbsrv\HPCHEM1\ECD_O\Data\PO121522\
 Data File : PO091403.D
 Signal(s) : Signal #1: ECD1A.ch Signal #2: ECD2B.ch
 Acq On : 15 Dec 2022 17:46
 Operator : YP/AJ
 Sample : AR1248CCC500
 Misc :
 ALS Vial : 5 Sample Multiplier: 1

Instrument :
 ECD_O
 ClientSampleId :

Integration File signal 1: autoint1.e
 Integration File signal 2: autoint2.e
 Quant Time: Dec 15 21:12:44 2022
 Quant Method : Z:\pestpcbsrv\HPCHEM1\ECD_O\methods\PO112522.M
 Quant Title : GC EXTRACTABLES
 QLast Update : Mon Nov 28 11:25:59 2022
 Response via : Initial Calibration
 Integrator: ChemStation

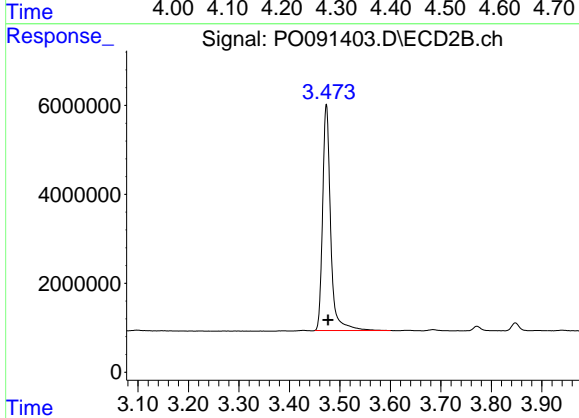
Volume Inj. : 2 µl
 Signal #1 Phase : ZB-MR1 Signal #2 Phase: ZB-MR2
 Signal #1 Info : 30Mx0.32mmx 0.50µ Signal #2 Info : 30M x 0.32mm x 0.25µm



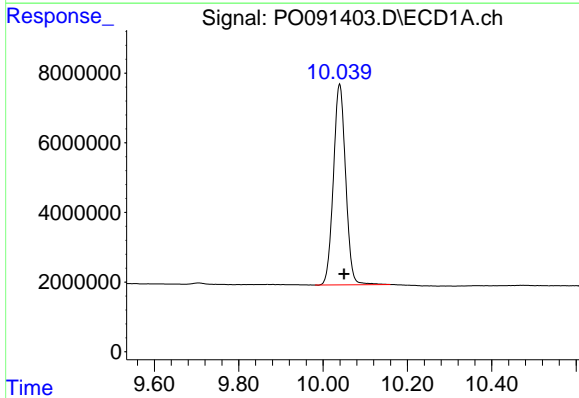


#1 Tetrachloro-m-xylene
 R.T.: 4.296 min
 Delta R.T.: -0.002 min
 Response: 162651901
 Conc: 48.11 ng/ml

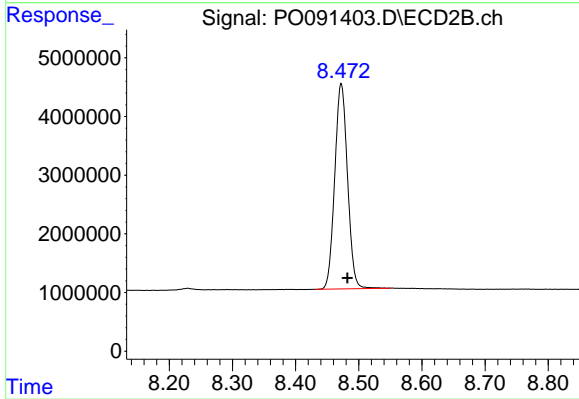
Instrument :
 ECD_O
 ClientSampleId :



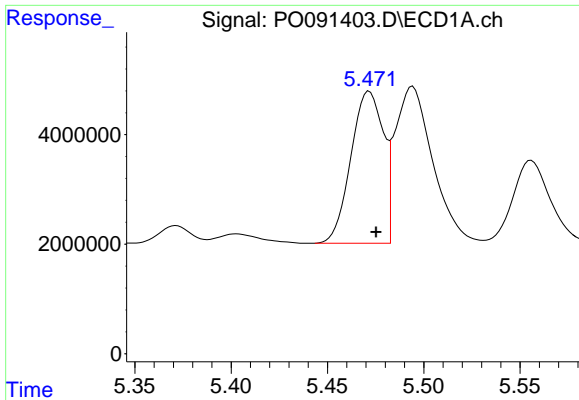
#1 Tetrachloro-m-xylene
 R.T.: 3.473 min
 Delta R.T.: -0.003 min
 Response: 56189324
 Conc: 53.54 ng/ml



#2 Decachlorobiphenyl
 R.T.: 10.040 min
 Delta R.T.: -0.010 min
 Response: 116054690
 Conc: 43.69 ng/ml



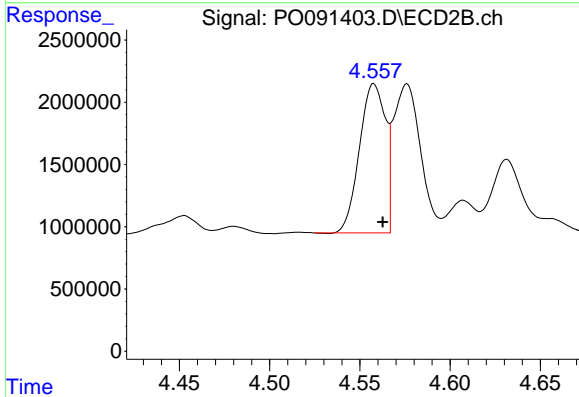
#2 Decachlorobiphenyl
 R.T.: 8.472 min
 Delta R.T.: -0.010 min
 Response: 49094883
 Conc: 50.57 ng/ml



#3 AR-1016-1

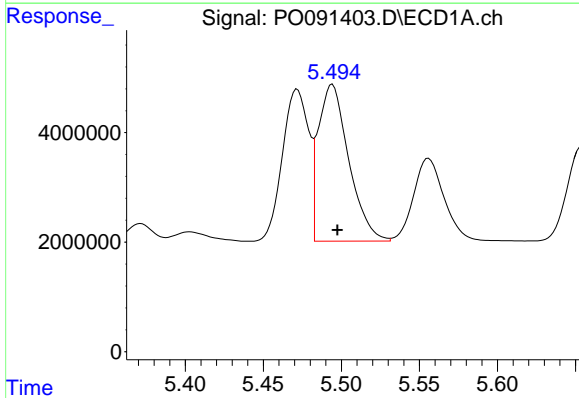
R.T.: 5.472 min
 Delta R.T.: -0.003 min
 Response: 32432450
 Conc: 288.20 ng/ml

Instrument :
 ECD_O
 ClientSampleId :



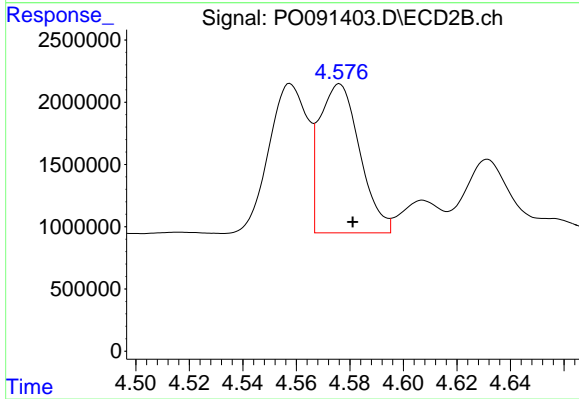
#3 AR-1016-1

R.T.: 4.558 min
 Delta R.T.: -0.005 min
 Response: 11966925
 Conc: 324.73 ng/ml



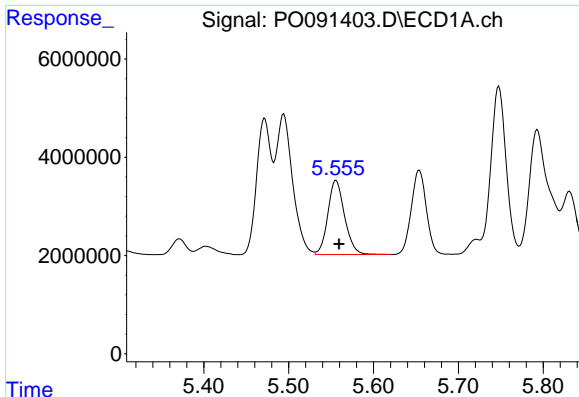
#4 AR-1016-2

R.T.: 5.494 min
 Delta R.T.: -0.003 min
 Response: 38909767
 Conc: 239.33 ng/ml



#4 AR-1016-2

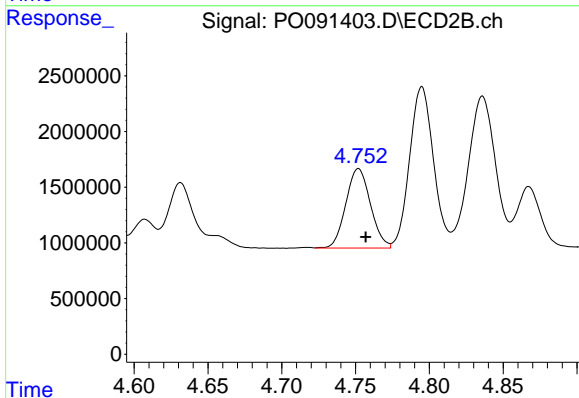
R.T.: 4.576 min
 Delta R.T.: -0.005 min
 Response: 12479803
 Conc: 242.19 ng/ml



#5 AR-1016-3

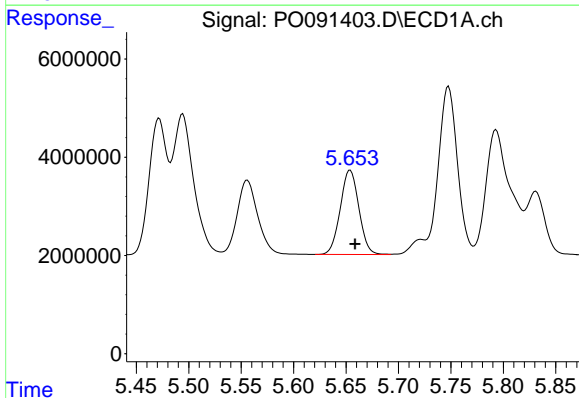
R.T.: 5.556 min
 Delta R.T.: -0.003 min
 Response: 20627188
 Conc: 197.84 ng/ml

Instrument :
 ECD_O
 ClientSampleId :



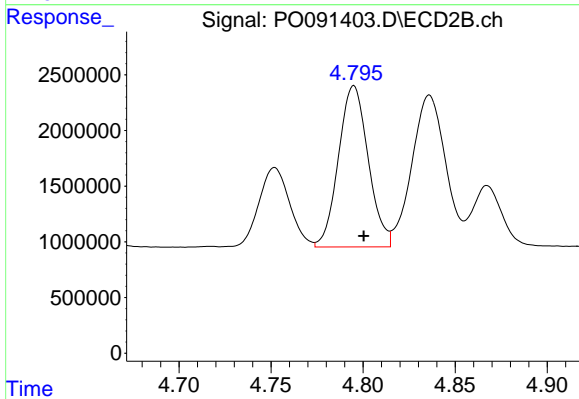
#5 AR-1016-3

R.T.: 4.752 min
 Delta R.T.: -0.005 min
 Response: 8300600
 Conc: 305.00 ng/ml



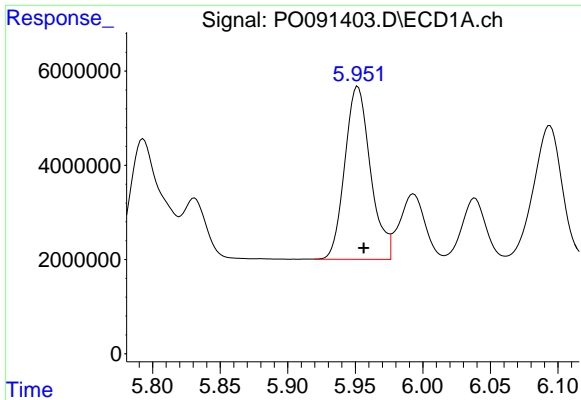
#6 AR-1016-4

R.T.: 5.654 min
 Delta R.T.: -0.004 min
 Response: 21195837
 Conc: 261.57 ng/ml



#6 AR-1016-4

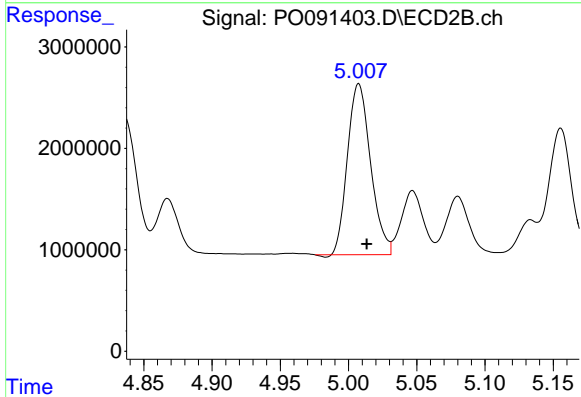
R.T.: 4.795 min
 Delta R.T.: -0.005 min
 Response: 16286526
 Conc: 704.57 ng/ml



#7 AR-1016-5

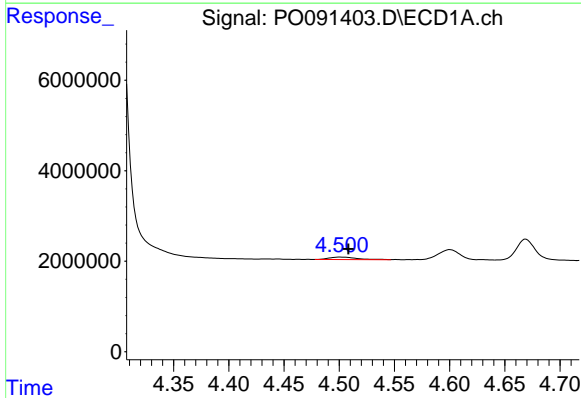
R.T.: 5.952 min
 Delta R.T.: -0.004 min
 Response: 48554039
 Conc: 553.67 ng/ml

Instrument :
 ECD_O
 ClientSampleId :



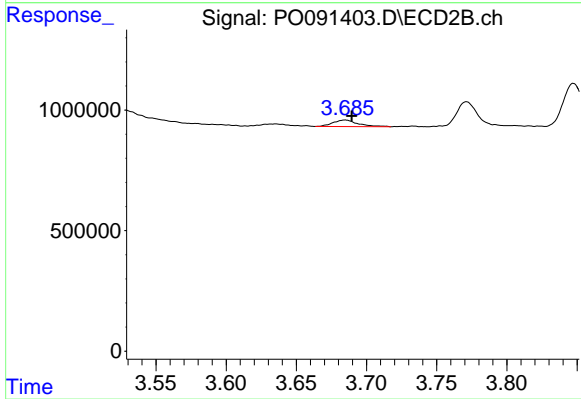
#7 AR-1016-5

R.T.: 5.008 min
 Delta R.T.: -0.006 min
 Response: 19862266
 Conc: 673.37 ng/ml



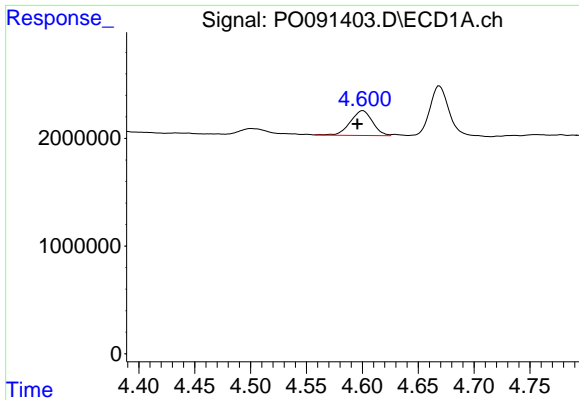
#8 AR-1221-1

R.T.: 4.500 min
 Delta R.T.: -0.008 min
 Response: 987965
 Conc: 24.18 ng/ml



#8 AR-1221-1

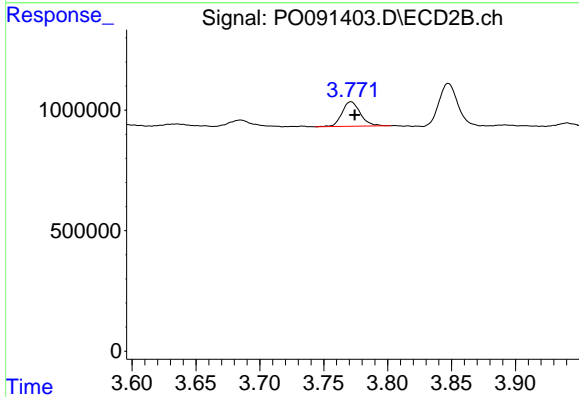
R.T.: 3.685 min
 Delta R.T.: -0.005 min
 Response: 338312
 Conc: 25.67 ng/ml



#9 AR-1221-2

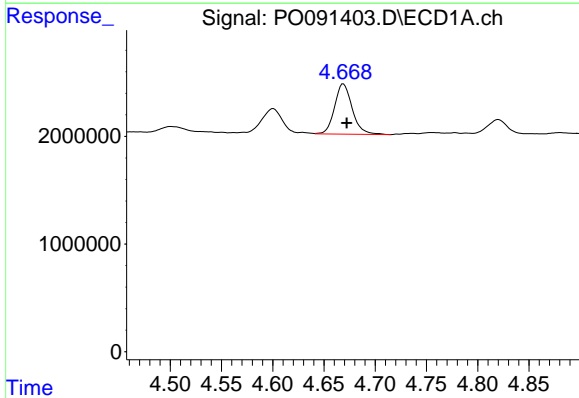
R.T.: 4.600 min
 Delta R.T.: 0.005 min
 Response: 3201803
 Conc: 105.56 ng/ml

Instrument :
 ECD_O
 ClientSampleId :



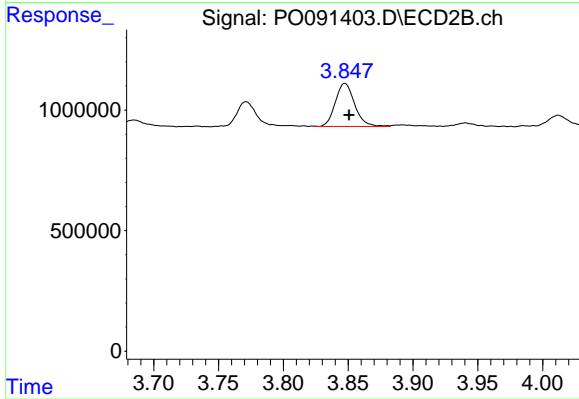
#9 AR-1221-2

R.T.: 3.771 min
 Delta R.T.: -0.003 min
 Response: 1016704
 Conc: 102.26 ng/ml



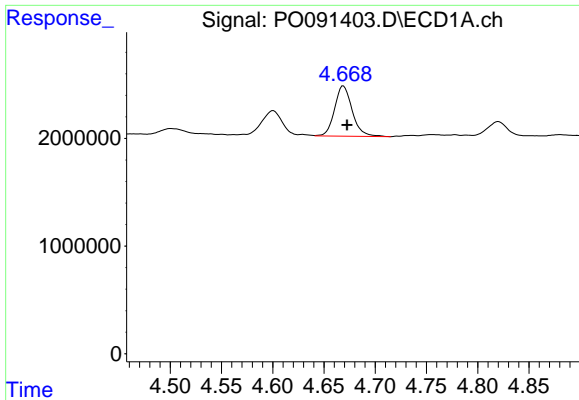
#10 AR-1221-3

R.T.: 4.669 min
 Delta R.T.: -0.003 min
 Response: 5586785
 Conc: 60.73 ng/ml



#10 AR-1221-3

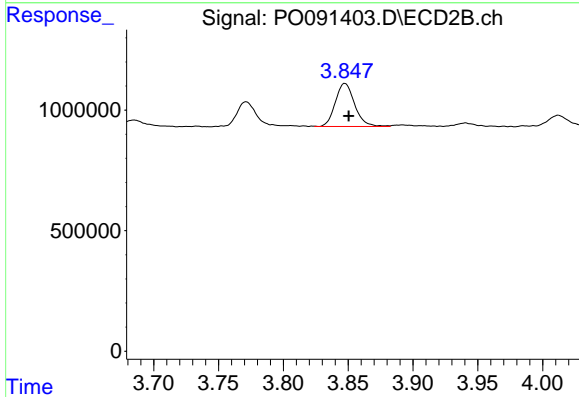
R.T.: 3.847 min
 Delta R.T.: -0.003 min
 Response: 1846704
 Conc: 59.46 ng/ml



#11 AR-1232-1

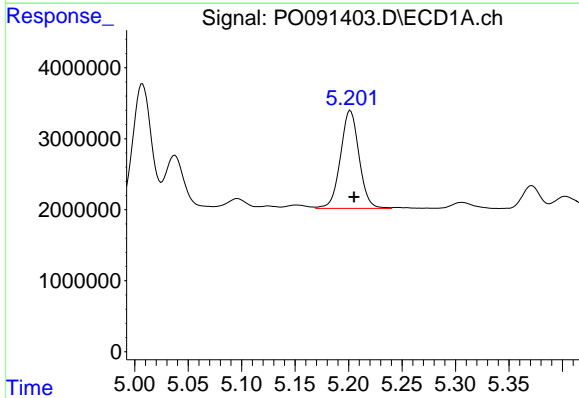
R.T.: 4.669 min
 Delta R.T.: -0.003 min
 Response: 5586785
 Conc: 77.65 ng/ml

Instrument :
 ECD_O
 ClientSampleId :



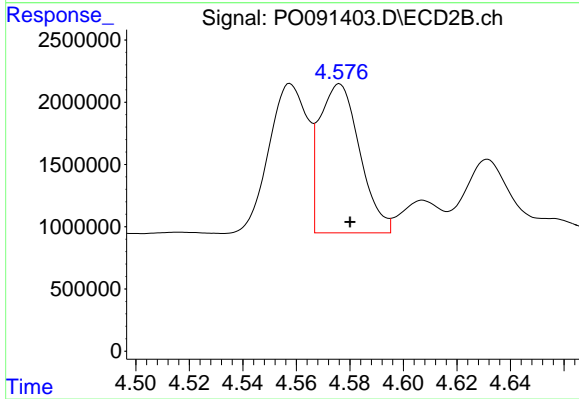
#11 AR-1232-1

R.T.: 3.847 min
 Delta R.T.: -0.003 min
 Response: 1846704
 Conc: 77.29 ng/ml



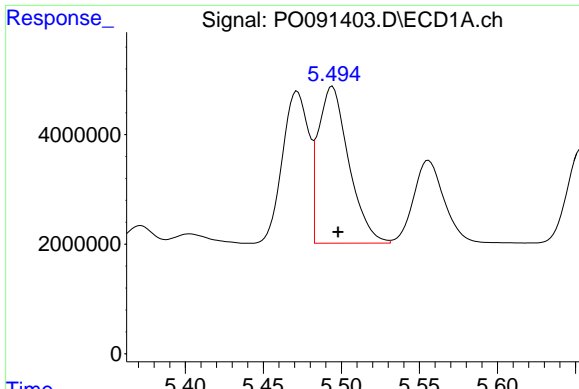
#12 AR-1232-2

R.T.: 5.202 min
 Delta R.T.: -0.003 min
 Response: 16687699
 Conc: 385.19 ng/ml



#12 AR-1232-2

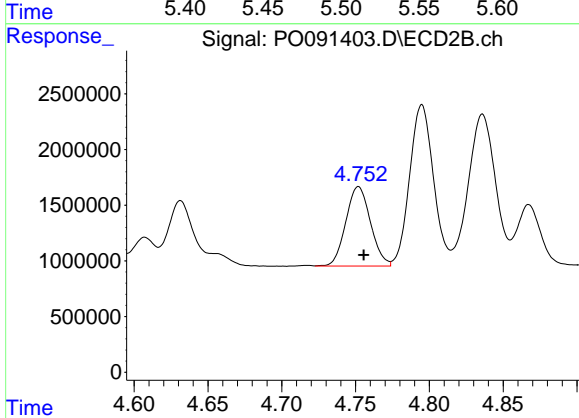
R.T.: 4.576 min
 Delta R.T.: -0.004 min
 Response: 12479803
 Conc: 516.74 ng/ml



#13 AR-1232-3

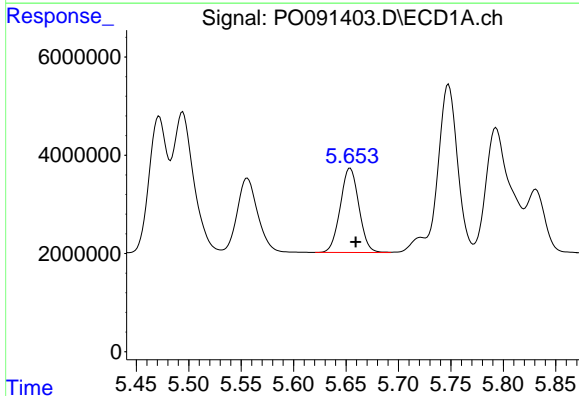
R.T.: 5.494 min
 Delta R.T.: -0.004 min
 Response: 38909767
 Conc: 520.73 ng/ml

Instrument :
 ECD_O
 ClientSampleId :



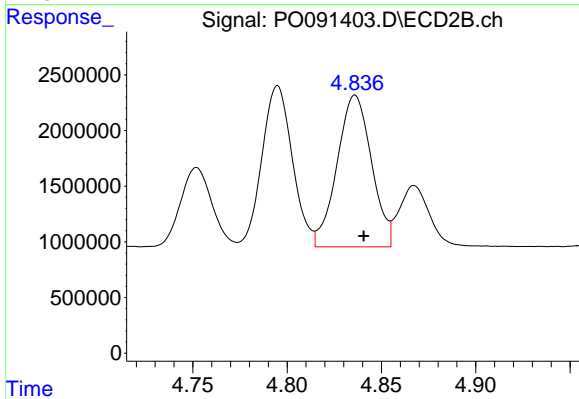
#13 AR-1232-3

R.T.: 4.752 min
 Delta R.T.: -0.003 min
 Response: 8300600
 Conc: 655.68 ng/ml



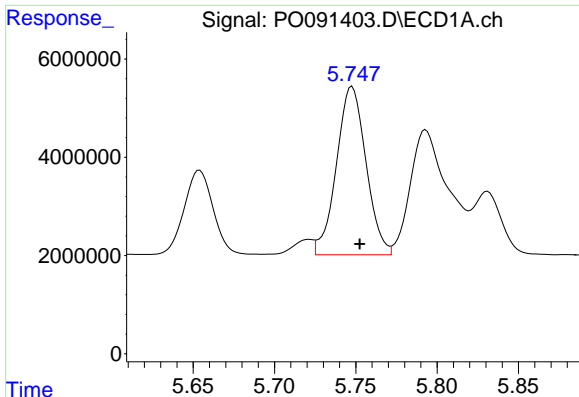
#14 AR-1232-4

R.T.: 5.654 min
 Delta R.T.: -0.005 min
 Response: 21195837
 Conc: 565.58 ng/ml



#14 AR-1232-4

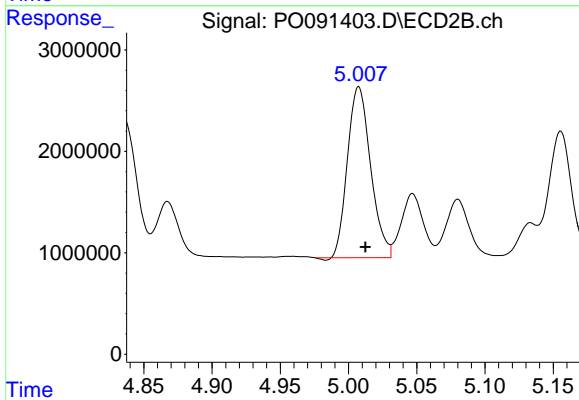
R.T.: 4.836 min
 Delta R.T.: -0.005 min
 Response: 17338421
 Conc: 1434.39 ng/ml



#15 AR-1232-5

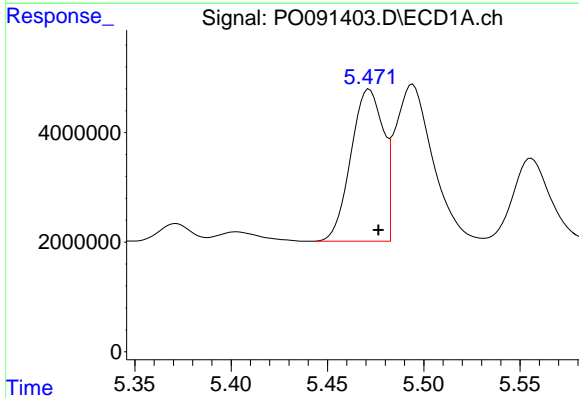
R.T.: 5.748 min
 Delta R.T.: -0.005 min
 Response: 43315239
 Conc: 1448.49 ng/ml

Instrument :
 ECD_O
 ClientSampleId :



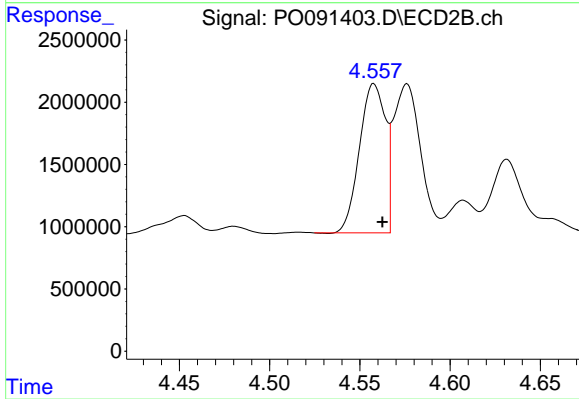
#15 AR-1232-5

R.T.: 5.008 min
 Delta R.T.: -0.005 min
 Response: 19862266
 Conc: 1468.54 ng/ml



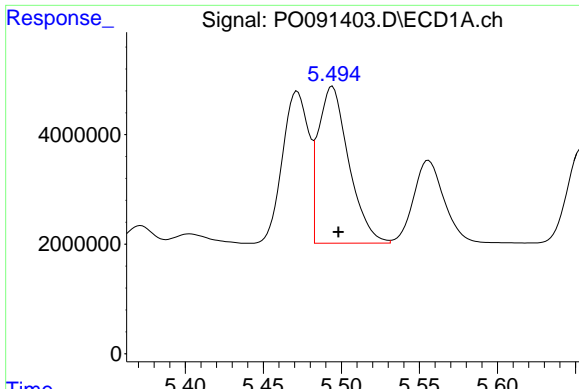
#16 AR-1242-1

R.T.: 5.472 min
 Delta R.T.: -0.005 min
 Response: 32432450
 Conc: 363.36 ng/ml



#16 AR-1242-1

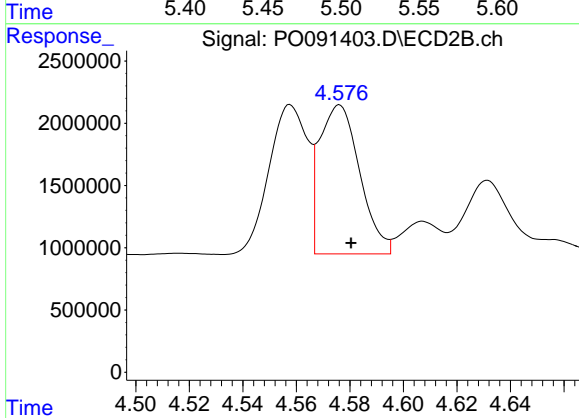
R.T.: 4.558 min
 Delta R.T.: -0.005 min
 Response: 11966925
 Conc: 412.13 ng/ml



#17 AR-1242-2

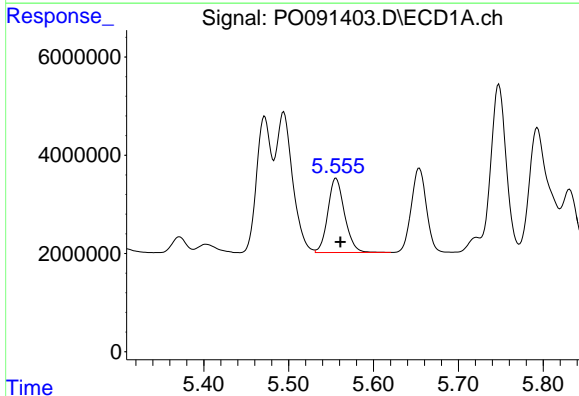
R.T.: 5.494 min
 Delta R.T.: -0.004 min
 Response: 38909767
 Conc: 306.45 ng/ml

Instrument :
 ECD_O
 ClientSampleId :



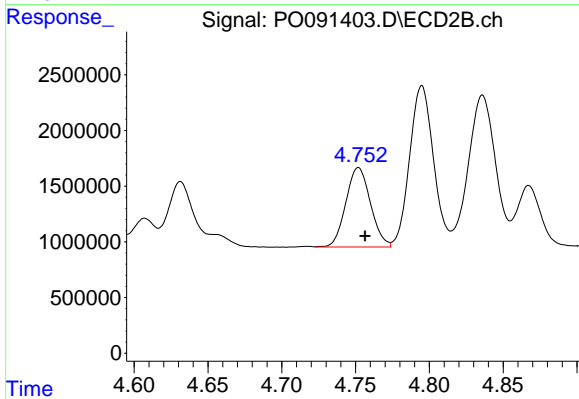
#17 AR-1242-2

R.T.: 4.576 min
 Delta R.T.: -0.004 min
 Response: 12479803
 Conc: 309.59 ng/ml



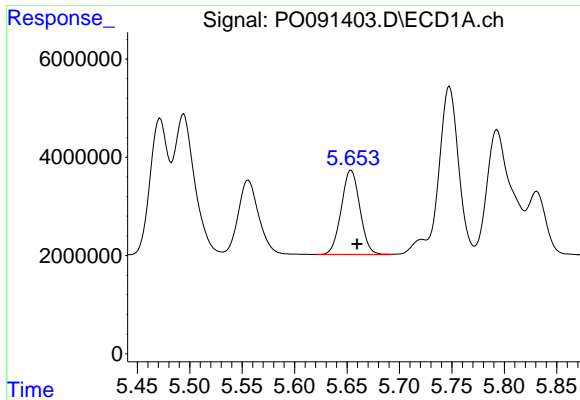
#18 AR-1242-3

R.T.: 5.556 min
 Delta R.T.: -0.005 min
 Response: 20627188
 Conc: 247.45 ng/ml



#18 AR-1242-3

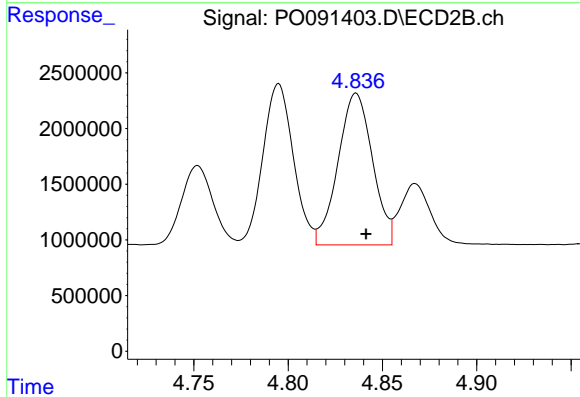
R.T.: 4.752 min
 Delta R.T.: -0.004 min
 Response: 8300600
 Conc: 396.92 ng/ml



#19 AR-1242-4

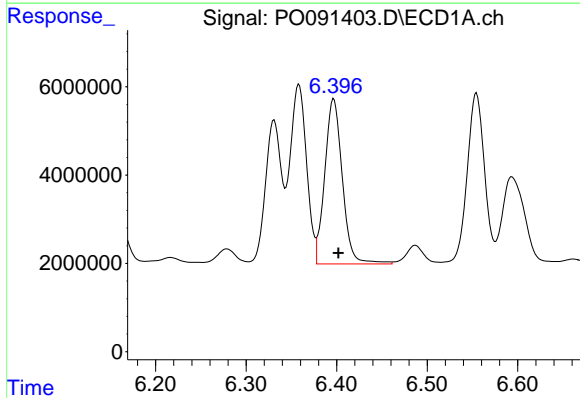
R.T.: 5.654 min
 Delta R.T.: -0.005 min
 Response: 21195837
 Conc: 333.66 ng/ml

Instrument :
 ECD_O
 ClientSampleId :



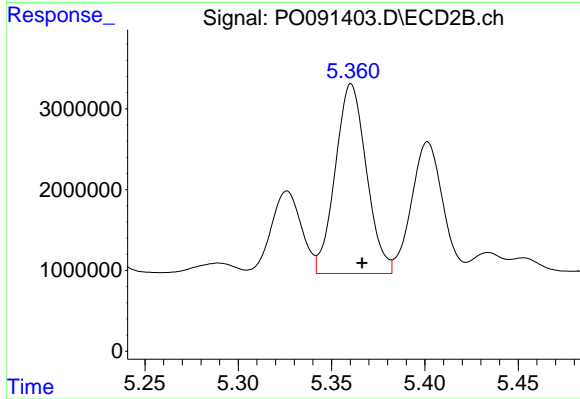
#19 AR-1242-4

R.T.: 4.836 min
 Delta R.T.: -0.005 min
 Response: 17338421
 Conc: 759.32 ng/ml



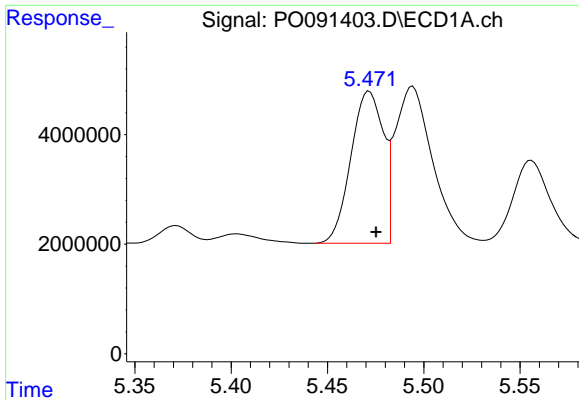
#20 AR-1242-5

R.T.: 6.397 min
 Delta R.T.: -0.005 min
 Response: 50483672
 Conc: 738.81 ng/ml



#20 AR-1242-5

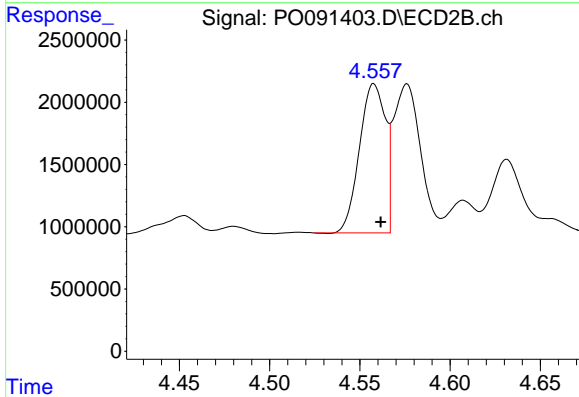
R.T.: 5.361 min
 Delta R.T.: -0.006 min
 Response: 27239913
 Conc: 965.44 ng/ml



#21 AR-1248-1

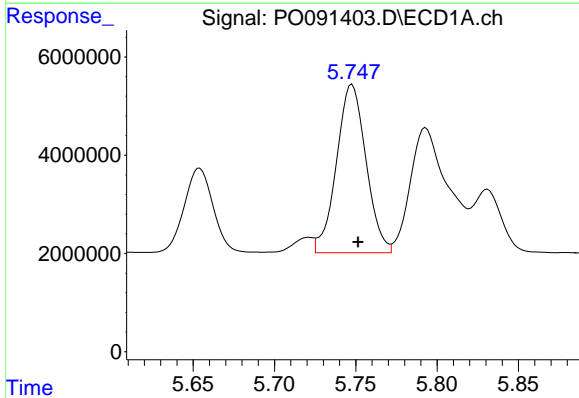
R.T.: 5.472 min
 Delta R.T.: -0.004 min
 Response: 32432450
 Conc: 455.30 ng/ml

Instrument :
 ECD_O
 ClientSampleId :



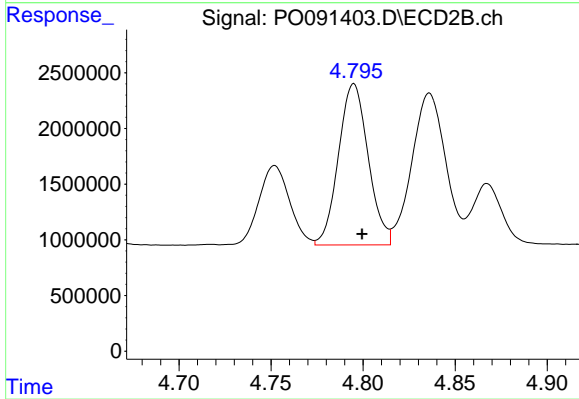
#21 AR-1248-1

R.T.: 4.558 min
 Delta R.T.: -0.004 min
 Response: 11966925
 Conc: 508.67 ng/ml



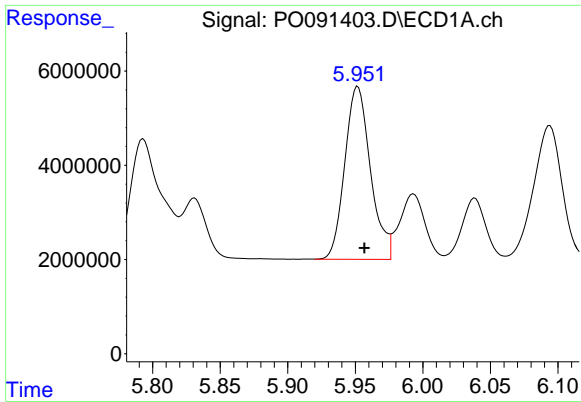
#22 AR-1248-2

R.T.: 5.748 min
 Delta R.T.: -0.004 min
 Response: 43315239
 Conc: 408.60 ng/ml



#22 AR-1248-2

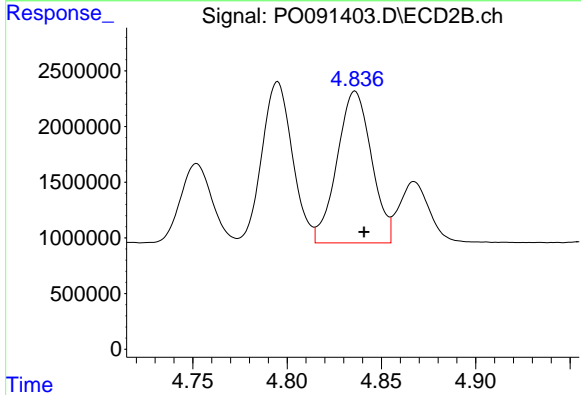
R.T.: 4.795 min
 Delta R.T.: -0.005 min
 Response: 16286526
 Conc: 497.45 ng/ml



#23 AR-1248-3

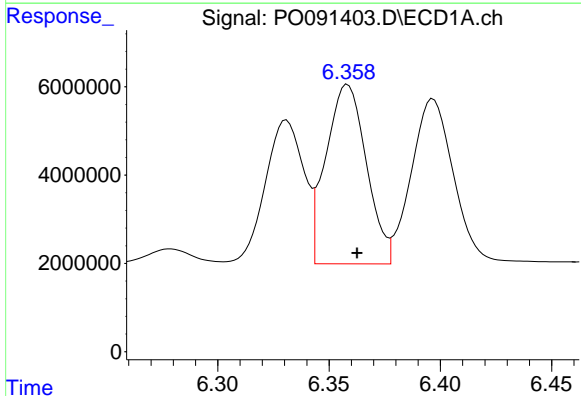
R.T.: 5.952 min
 Delta R.T.: -0.005 min
 Response: 48554039
 Conc: 412.59 ng/ml

Instrument :
 ECD_O
 ClientSampleId :



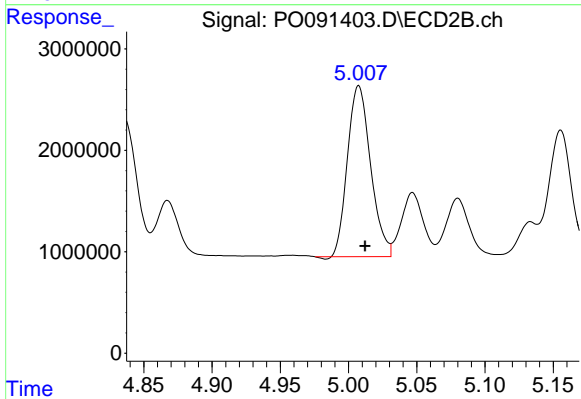
#23 AR-1248-3

R.T.: 4.836 min
 Delta R.T.: -0.005 min
 Response: 17338421
 Conc: 510.86 ng/ml



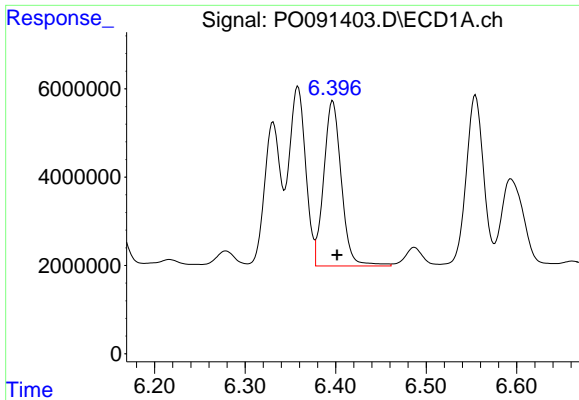
#24 AR-1248-4

R.T.: 6.358 min
 Delta R.T.: -0.004 min
 Response: 51348002
 Conc: 419.89 ng/ml



#24 AR-1248-4

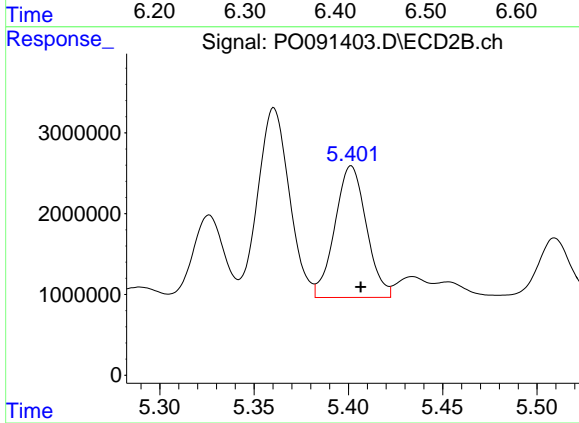
R.T.: 5.008 min
 Delta R.T.: -0.005 min
 Response: 19862266
 Conc: 497.77 ng/ml



#25 AR-1248-5

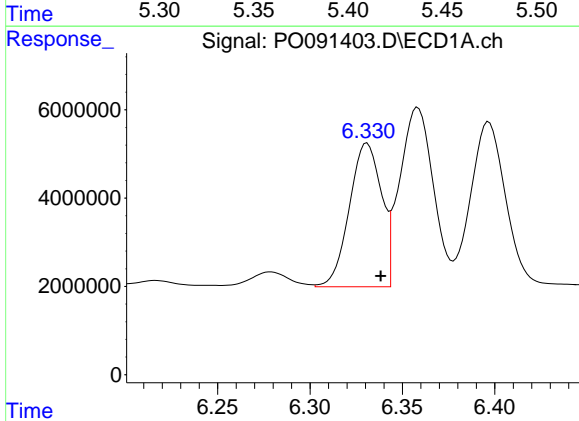
R.T.: 6.397 min
 Delta R.T.: -0.005 min
 Response: 50483672
 Conc: 440.15 ng/ml

Instrument :
 ECD_O
 ClientSampleId :



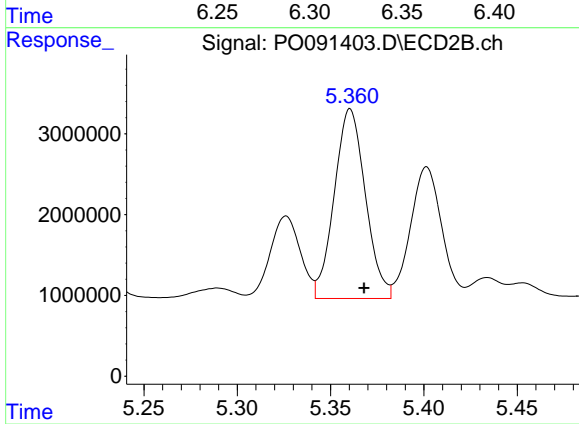
#25 AR-1248-5

R.T.: 5.402 min
 Delta R.T.: -0.005 min
 Response: 18945877
 Conc: 528.55 ng/ml



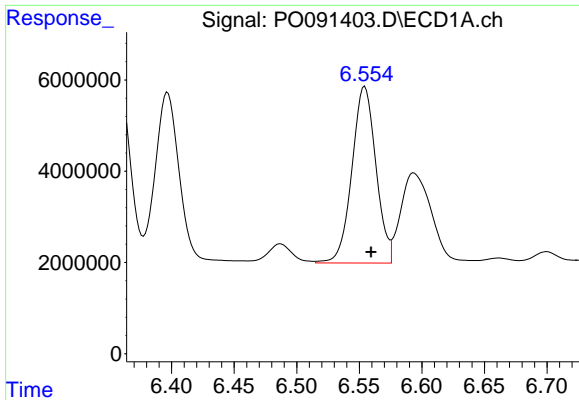
#26 AR-1254-1

R.T.: 6.331 min
 Delta R.T.: -0.007 min
 Response: 39279647
 Conc: 312.76 ng/ml



#26 AR-1254-1

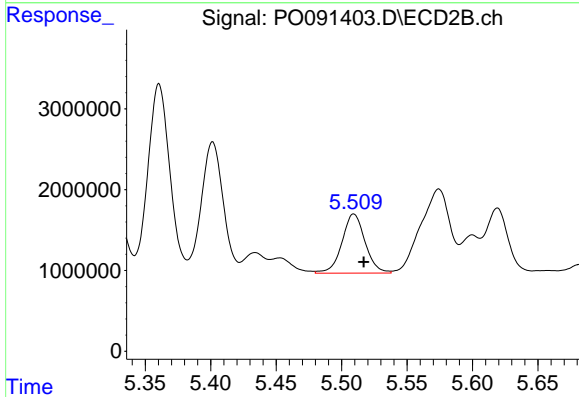
R.T.: 5.361 min
 Delta R.T.: -0.008 min
 Response: 27239913
 Conc: 464.79 ng/ml



#27 AR-1254-2

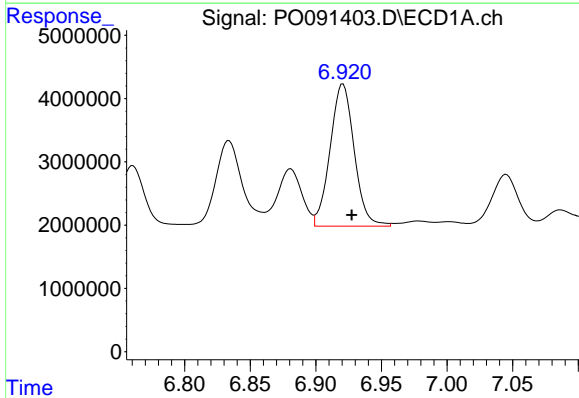
R.T.: 6.554 min
Delta R.T.: -0.005 min
Response: 51663830
Conc: 274.00 ng/ml

Instrument :
ECD_O
ClientSampleId :



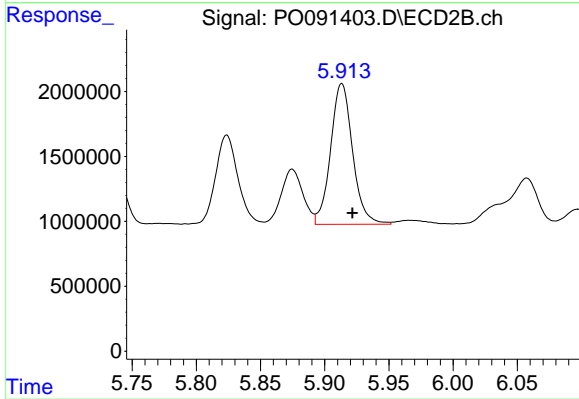
#27 AR-1254-2

R.T.: 5.509 min
Delta R.T.: -0.007 min
Response: 9032068
Conc: 169.23 ng/ml



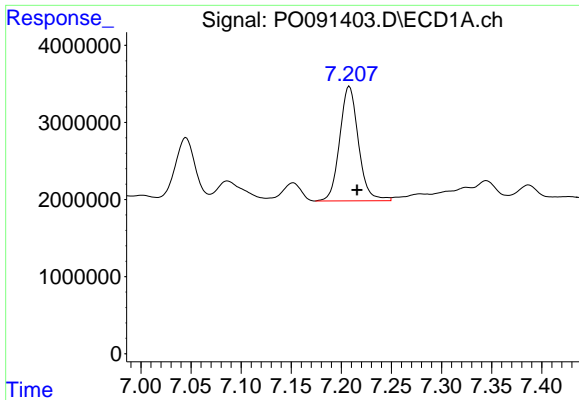
#28 AR-1254-3

R.T.: 6.921 min
Delta R.T.: -0.007 min
Response: 28737165
Conc: 153.32 ng/ml



#28 AR-1254-3

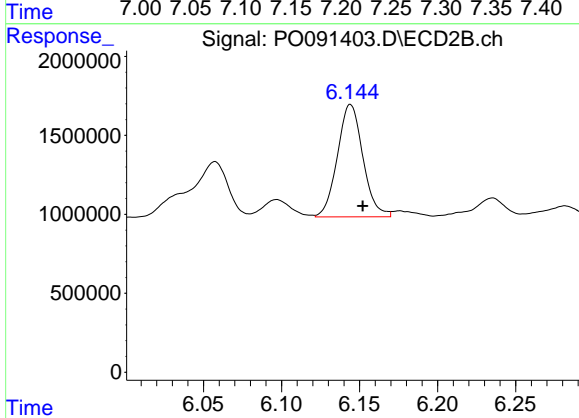
R.T.: 5.913 min
Delta R.T.: -0.008 min
Response: 12937609
Conc: 158.80 ng/ml



#29 AR-1254-4

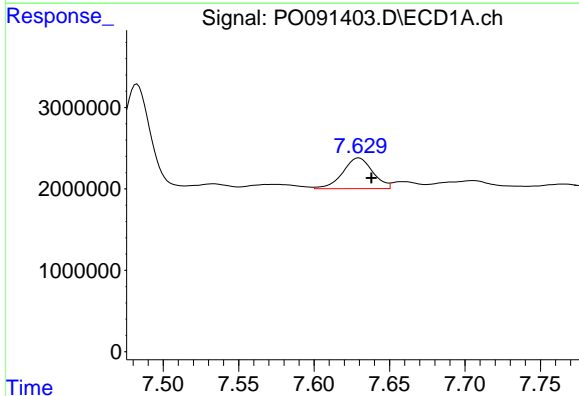
R.T.: 7.208 min
 Delta R.T.: -0.008 min
 Response: 19284758
 Conc: 139.60 ng/ml

Instrument :
 ECD_O
 ClientSampleId :



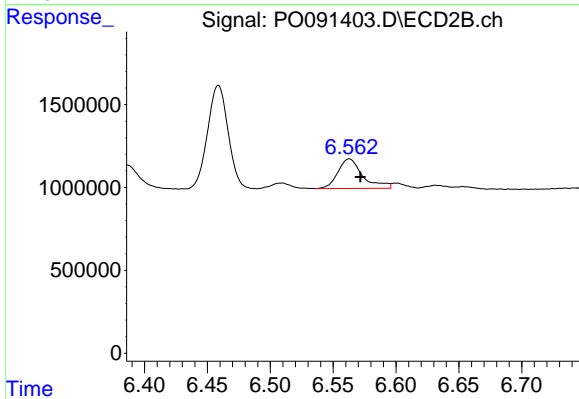
#29 AR-1254-4

R.T.: 6.144 min
 Delta R.T.: -0.008 min
 Response: 8104332
 Conc: 165.64 ng/ml



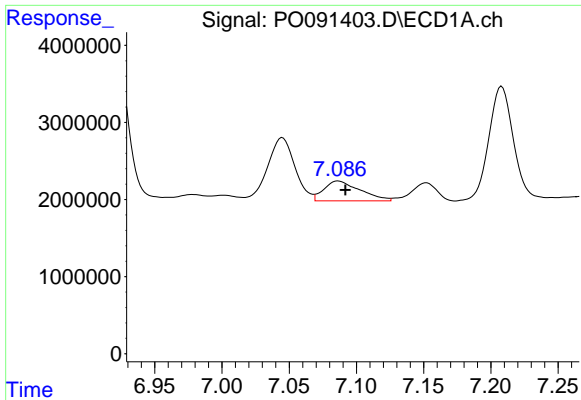
#30 AR-1254-5

R.T.: 7.630 min
 Delta R.T.: -0.008 min
 Response: 5237213
 Conc: 34.13 ng/ml



#30 AR-1254-5

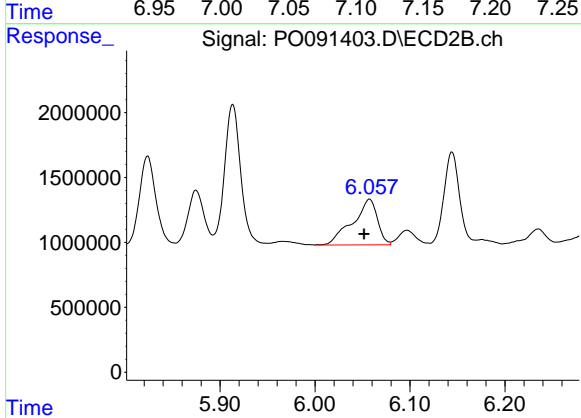
R.T.: 6.563 min
 Delta R.T.: -0.009 min
 Response: 2447029
 Conc: 32.83 ng/ml



#31 AR-1260-1

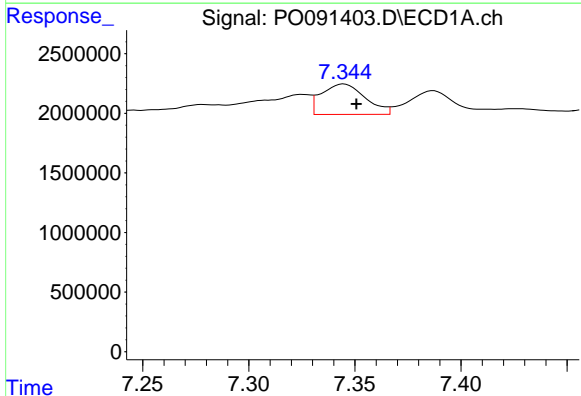
R.T.: 7.086 min
 Delta R.T.: -0.005 min
 Response: 4822113
 Conc: 31.43 ng/ml

Instrument :
 ECD_O
 ClientSampleId :



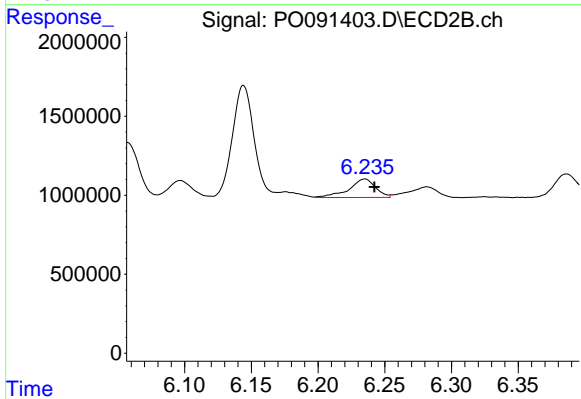
#31 AR-1260-1

R.T.: 6.057 min
 Delta R.T.: 0.006 min
 Response: 6382804
 Conc: 110.23 ng/ml



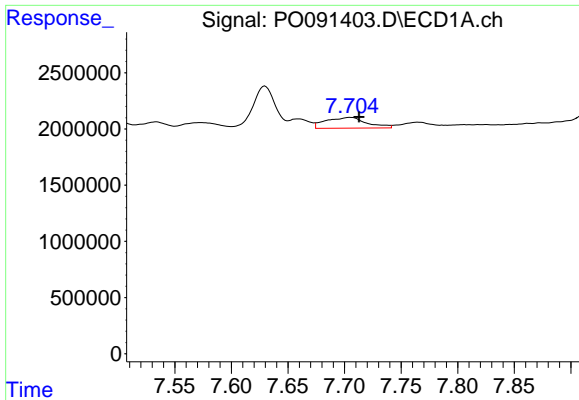
#32 AR-1260-2

R.T.: 7.345 min
 Delta R.T.: -0.006 min
 Response: 3667947
 Conc: 21.01 ng/ml



#32 AR-1260-2

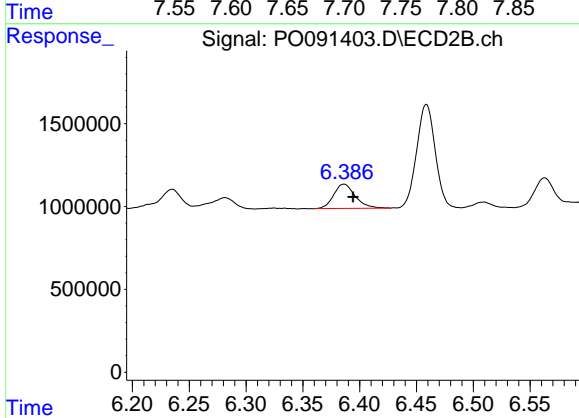
R.T.: 6.235 min
 Delta R.T.: -0.007 min
 Response: 1626799
 Conc: 23.82 ng/ml



#33 AR-1260-3

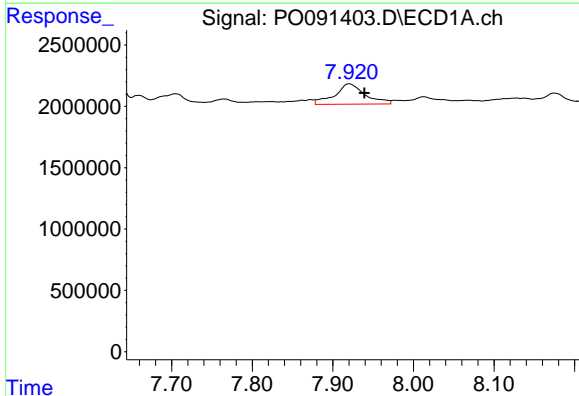
R.T.: 7.705 min
 Delta R.T.: -0.007 min
 Response: 2392309
 Conc: 21.05 ng/ml

Instrument :
 ECD_O
 ClientSampleId :



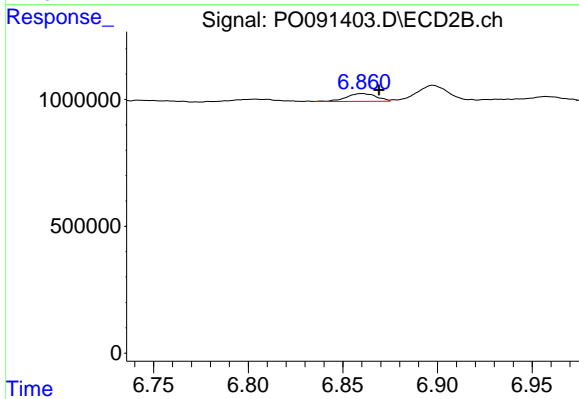
#33 AR-1260-3

R.T.: 6.386 min
 Delta R.T.: -0.008 min
 Response: 1946035
 Conc: 29.67 ng/ml



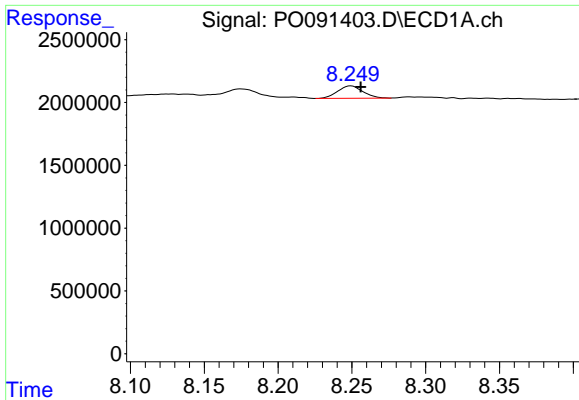
#34 AR-1260-4

R.T.: 7.920 min
 Delta R.T.: -0.018 min
 Response: 4370376
 Conc: 32.25 ng/ml



#34 AR-1260-4

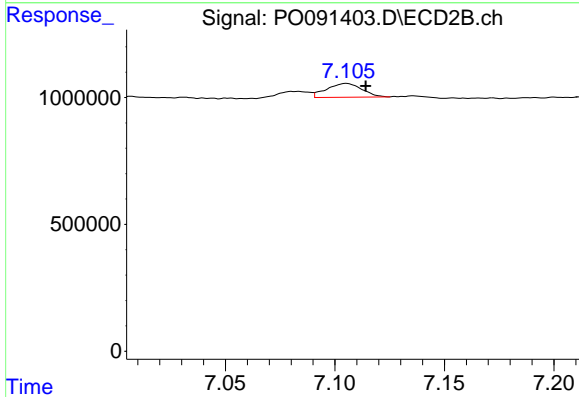
R.T.: 6.860 min
 Delta R.T.: -0.009 min
 Response: 338861
 Conc: 7.10 ng/ml



#35 AR-1260-5

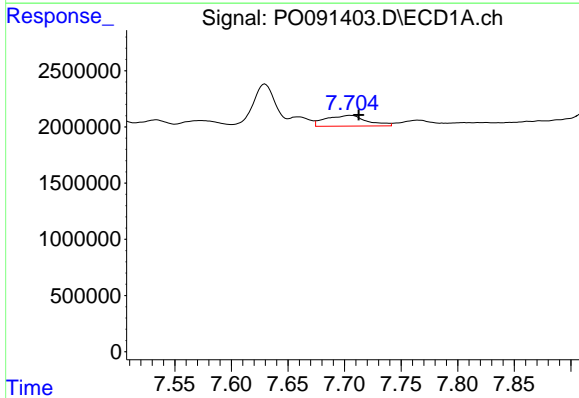
R.T.: 8.250 min
 Delta R.T.: -0.006 min
 Response: 1169388
 Conc: 4.60 ng/ml

Instrument :
 ECD_O
 ClientSampleId :



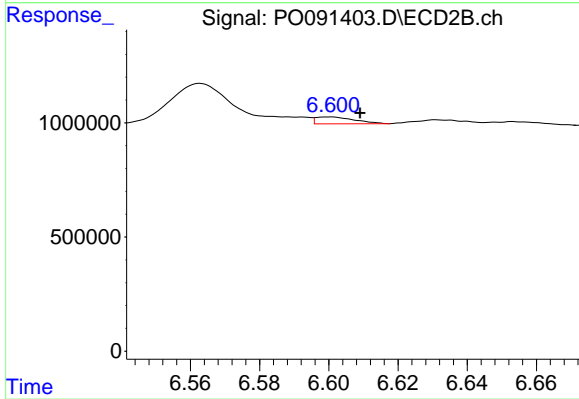
#35 AR-1260-5

R.T.: 7.105 min
 Delta R.T.: -0.009 min
 Response: 610345
 Conc: 5.61 ng/ml



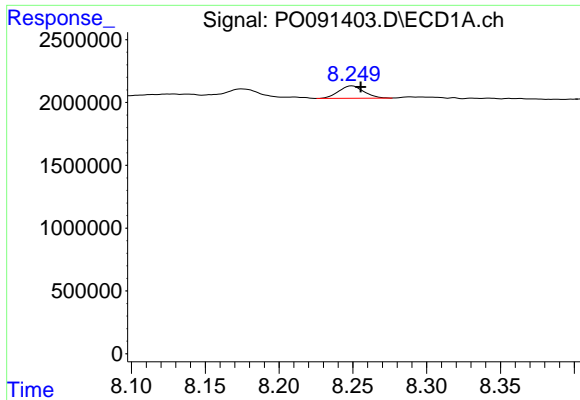
#36 AR-1262-1

R.T.: 7.705 min
 Delta R.T.: -0.007 min
 Response: 2392309
 Conc: 13.09 ng/ml



#36 AR-1262-1

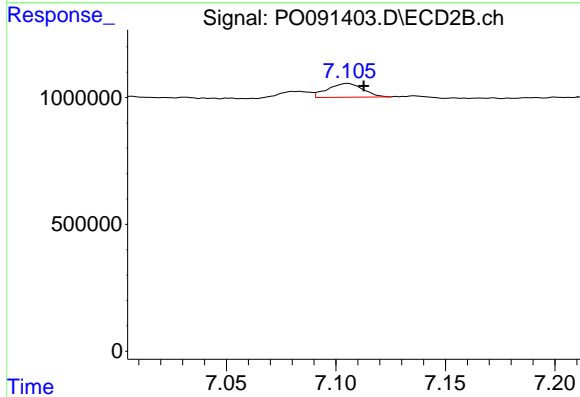
R.T.: 6.600 min
 Delta R.T.: -0.009 min
 Response: 234953
 Conc: 3.13 ng/ml



#37 AR-1262-2

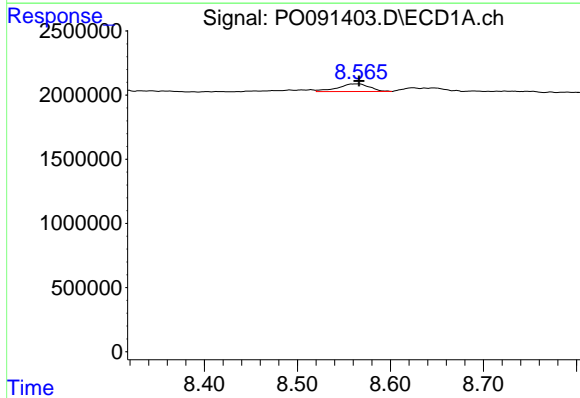
R.T.: 8.250 min
 Delta R.T.: -0.006 min
 Response: 1169388
 Conc: 3.78 ng/ml

Instrument :
 ECD_O
 ClientSampleId :



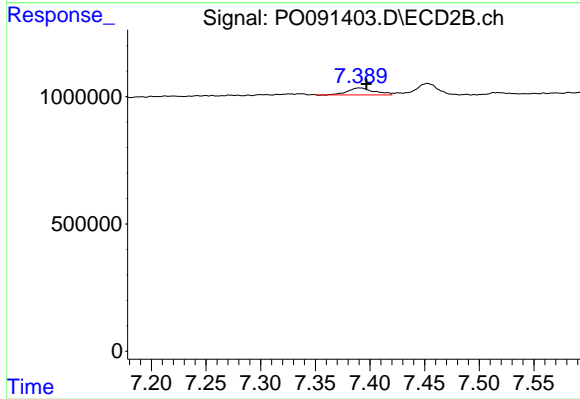
#37 AR-1262-2

R.T.: 7.105 min
 Delta R.T.: -0.007 min
 Response: 610345
 Conc: 4.79 ng/ml



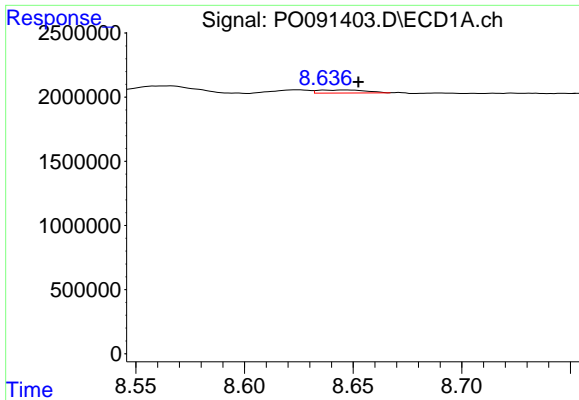
#38 AR-1262-3

R.T.: 8.566 min
 Delta R.T.: 0.000 min
 Response: 1399131
 Conc: 6.49 ng/ml



#38 AR-1262-3

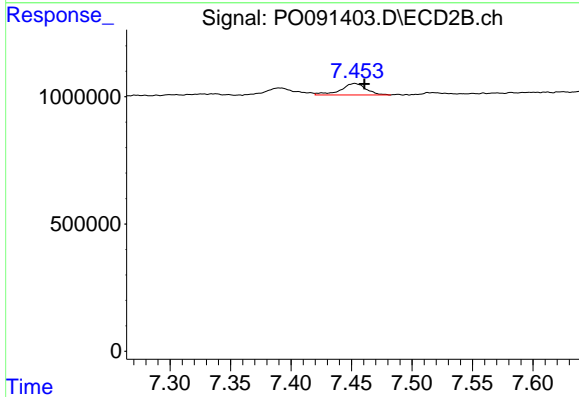
R.T.: 7.391 min
 Delta R.T.: -0.006 min
 Response: 456218
 Conc: 8.66 ng/ml



#39 AR-1262-4

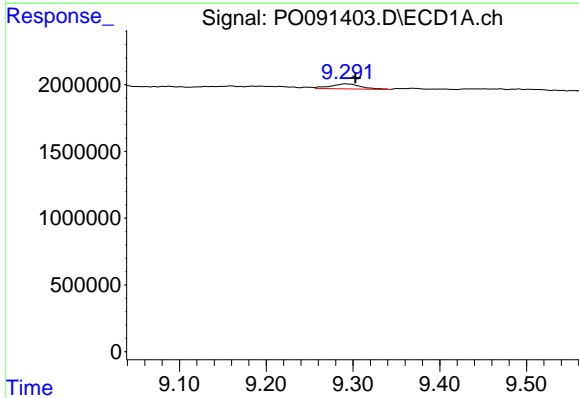
R.T.: 8.648 min
 Delta R.T.: -0.005 min
 Response: 364875
 Conc: 3.67 ng/ml

Instrument :
 ECD_O
 ClientSampleId :



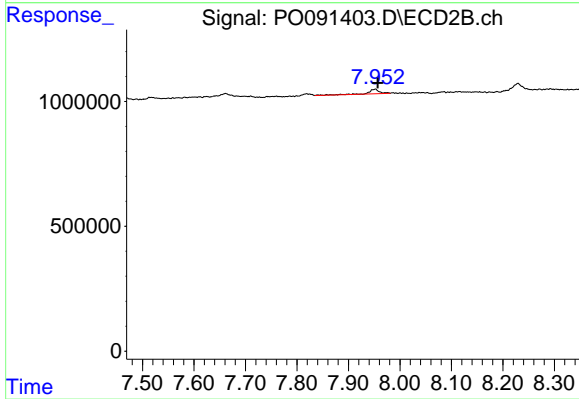
#39 AR-1262-4

R.T.: 7.453 min
 Delta R.T.: -0.008 min
 Response: 663001
 Conc: 6.98 ng/ml



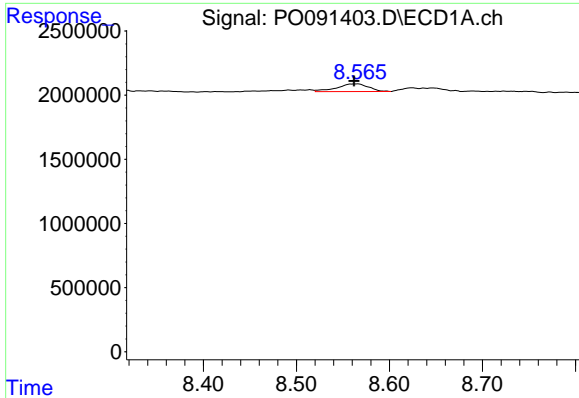
#40 AR-1262-5

R.T.: 9.292 min
 Delta R.T.: -0.011 min
 Response: 902786
 Conc: 7.82 ng/ml



#40 AR-1262-5

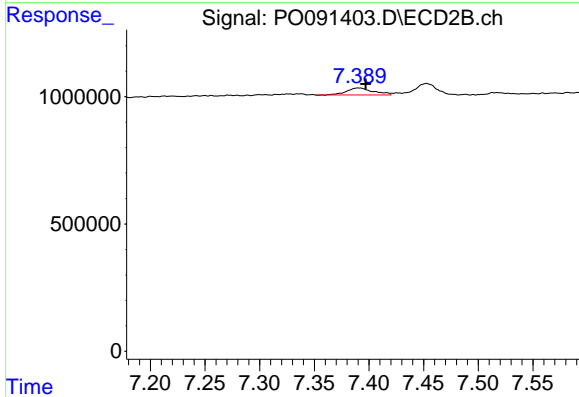
R.T.: 7.952 min
 Delta R.T.: -0.005 min
 Response: 262581
 Conc: 5.76 ng/ml



#41 AR-1268-1

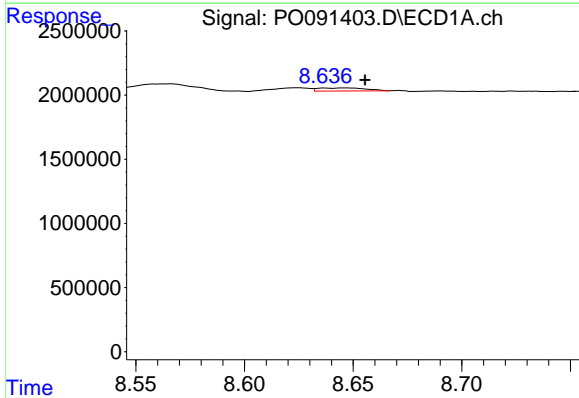
R.T.: 8.566 min
 Delta R.T.: 0.004 min
 Response: 1399131
 Conc: 3.80 ng/ml

Instrument :
 ECD_O
 ClientSampleId :



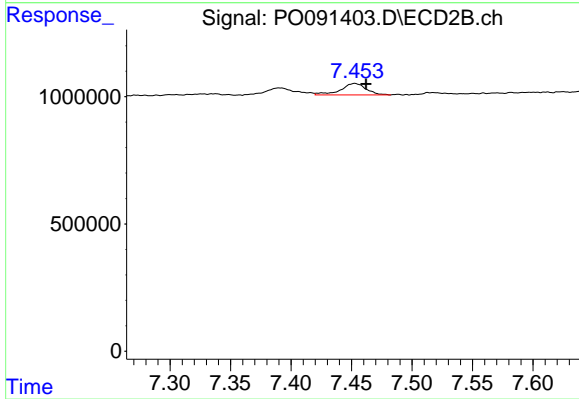
#41 AR-1268-1

R.T.: 7.391 min
 Delta R.T.: -0.006 min
 Response: 456218
 Conc: 3.06 ng/ml



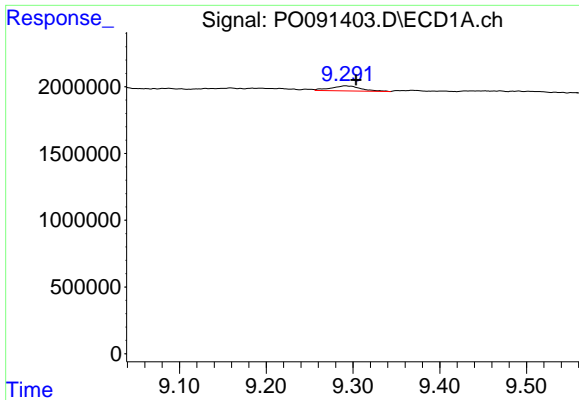
#42 AR-1268-2

R.T.: 8.648 min
 Delta R.T.: -0.008 min
 Response: 364875
 Conc: 1.10 ng/ml



#42 AR-1268-2

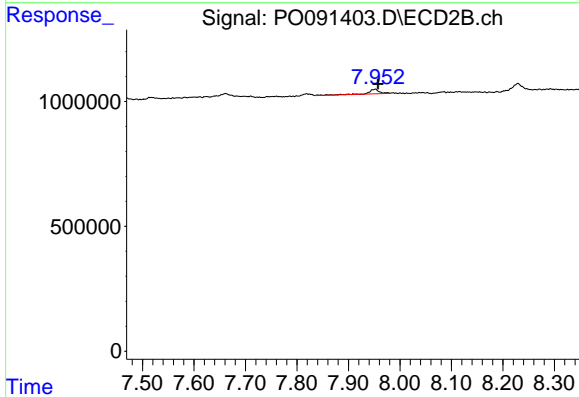
R.T.: 7.453 min
 Delta R.T.: -0.009 min
 Response: 663001
 Conc: 4.93 ng/ml



#44 AR-1268-4

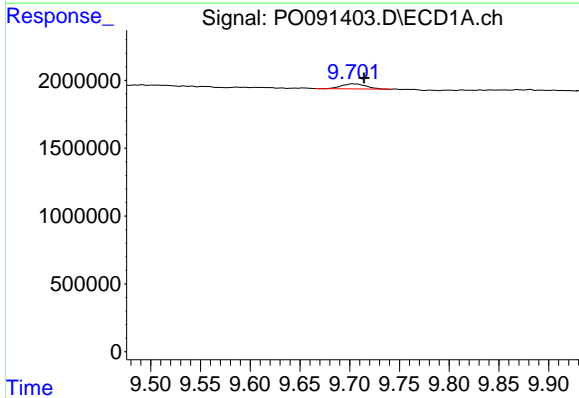
R.T.: 9.292 min
 Delta R.T.: -0.012 min
 Response: 902786
 Conc: 7.31 ng/ml

Instrument :
 ECD_O
 ClientSampleId :



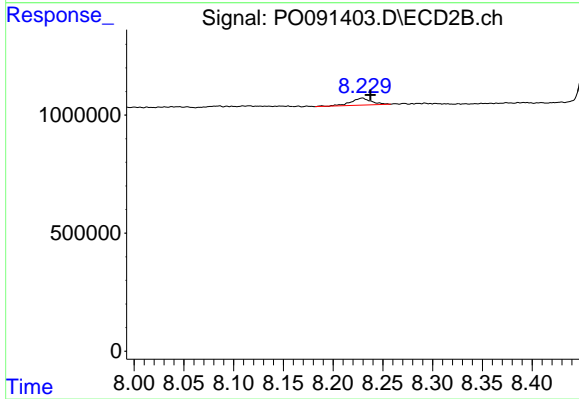
#44 AR-1268-4

R.T.: 7.952 min
 Delta R.T.: -0.005 min
 Response: 262581
 Conc: 5.32 ng/ml



#45 AR-1268-5

R.T.: 9.703 min
 Delta R.T.: -0.012 min
 Response: 639030
 Conc: 0.70 ng/ml



#45 AR-1268-5

R.T.: 8.229 min
 Delta R.T.: -0.008 min
 Response: 425472
 Conc: 1.26 ng/ml