

Data Path : Z:\pestpcbsrv\HPCHEM1\ECD\_0\Data\PO121522\  
 Data File : PO091428.D  
 Signal(s) : Signal #1: ECD1A.ch Signal #2: ECD2B.ch  
 Acq On : 16 Dec 2022 02:45  
 Operator : YP/AJ  
 Sample : I.BLK  
 Misc :  
 ALS Vial : 2 Sample Multiplier: 1

Instrument :  
 ECD\_0  
 ClientSampleId :  
 I.BLK

Integration File signal 1: autoint1.e  
 Integration File signal 2: autoint2.e  
 Quant Time: Dec 16 08:10:02 2022  
 Quant Method : Z:\pestpcbsrv\HPCHEM1\ECD\_0\methods\PO112522.M  
 Quant Title : GC EXTRACTABLES  
 QLast Update : Mon Nov 28 11:25:59 2022  
 Response via : Initial Calibration  
 Integrator: ChemStation

Volume Inj. : 2 µl  
 Signal #1 Phase : ZB-MR1 Signal #2 Phase: ZB-MR2  
 Signal #1 Info : 30Mx0.32mmx 0.50µ Signal #2 Info : 30M x 0.32mm x 0.25µm

Compound	RT#1	RT#2	Resp#1	Resp#2	ng/ml	ng/ml
-----						
System Monitoring Compounds						
1) SA Tetrachlo...	4.296	3.472	73682545	25451999	21.792	24.250
2) SA Decachlor...	10.046	8.474	56287127	23942712	21.191	24.661

Target Compounds

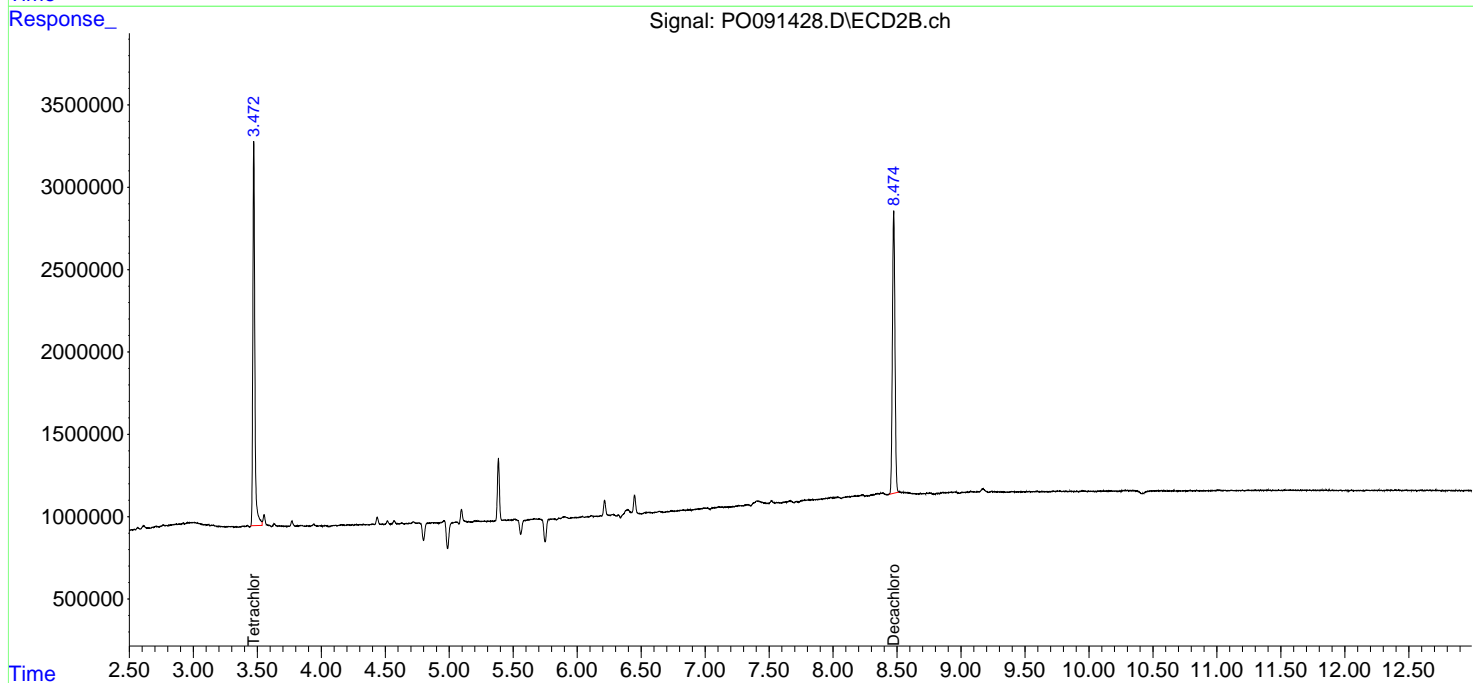
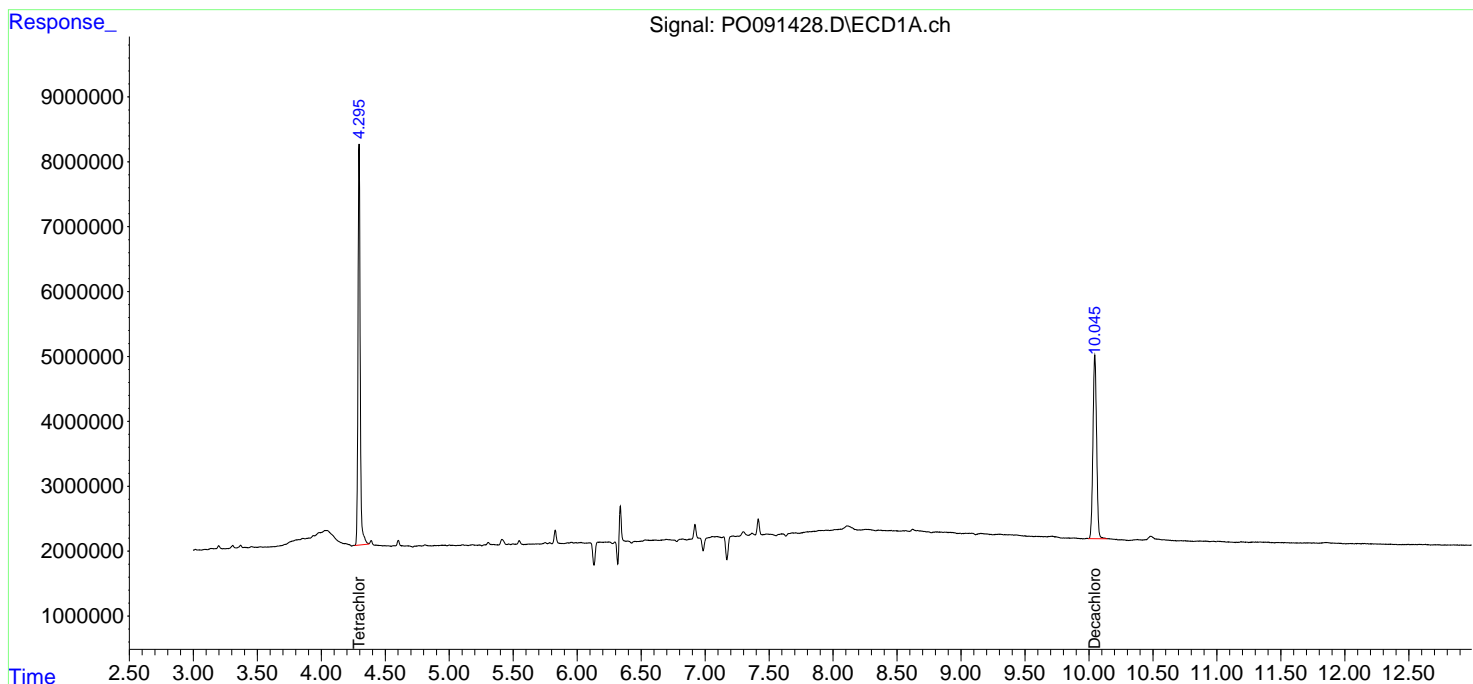
(f)=RT Delta > 1/2 Window (#)=Amounts differ by > 25% (m)=manual int.

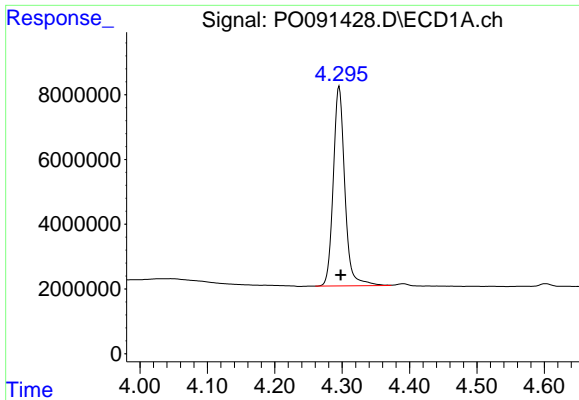
Data Path : Z:\pestpcbsrv\HPCHEM1\ECD\_O\Data\PO121522\  
 Data File : PO091428.D  
 Signal(s) : Signal #1: ECD1A.ch Signal #2: ECD2B.ch  
 Acq On : 16 Dec 2022 02:45  
 Operator : YP/AJ  
 Sample : I.BLK  
 Misc :  
 ALS Vial : 2 Sample Multiplier: 1

Instrument :  
 ECD\_O  
 ClientSampleId :  
 I.BLK

Integration File signal 1: autoint1.e  
 Integration File signal 2: autoint2.e  
 Quant Time: Dec 16 08:10:02 2022  
 Quant Method : Z:\pestpcbsrv\HPCHEM1\ECD\_O\methods\PO112522.M  
 Quant Title : GC EXTRACTABLES  
 QLast Update : Mon Nov 28 11:25:59 2022  
 Response via : Initial Calibration  
 Integrator: ChemStation

Volume Inj. : 2 µl  
 Signal #1 Phase : ZB-MR1 Signal #2 Phase: ZB-MR2  
 Signal #1 Info : 30Mx0.32mmx 0.50µ Signal #2 Info : 30M x 0.32mm x 0.25µm

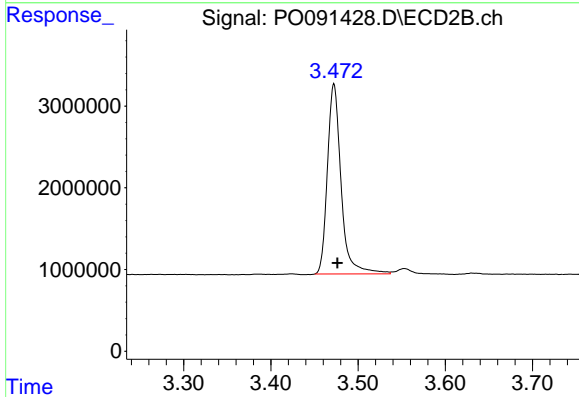




#1 Tetrachloro-m-xylene

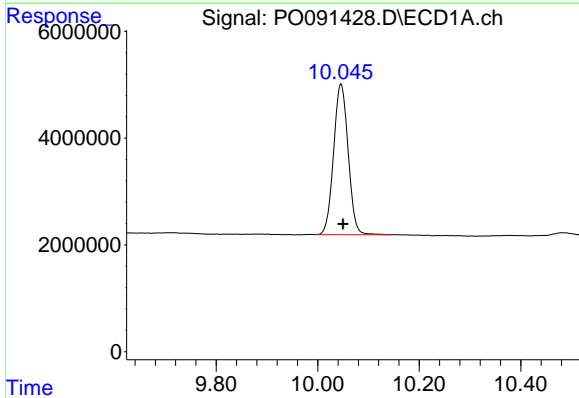
R.T.: 4.296 min  
Delta R.T.: -0.002 min  
Response: 73682545  
Conc: 21.79 ng/ml

Instrument :  
ECD\_O  
ClientSampleId :  
I.BLK



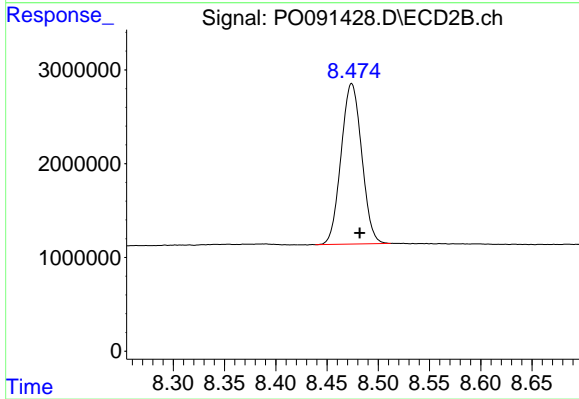
#1 Tetrachloro-m-xylene

R.T.: 3.472 min  
Delta R.T.: -0.004 min  
Response: 25451999  
Conc: 24.25 ng/ml



#2 Decachlorobiphenyl

R.T.: 10.046 min  
Delta R.T.: -0.004 min  
Response: 56287127  
Conc: 21.19 ng/ml



#2 Decachlorobiphenyl

R.T.: 8.474 min  
Delta R.T.: -0.008 min  
Response: 23942712  
Conc: 24.66 ng/ml