

Data Path : Z:\pestpcbsrv\HPCHEM1\ECD_0\Data\PO121620\
 Data File : PO073865.D
 Signal(s) : Signal #1: ECD1A.CH Signal #2: ECD2B.CH
 Acq On : 16 Dec 2020 10:37
 Operator : DD\AJ
 Sample : L5092-01
 Misc :
 ALS Vial : 8 Sample Multiplier: 1

Instrument :
 ECD_0
ClientSampleId :
 HR-02-12142020

Manual Integrations
APPROVED
 Ankita
 12/17/2020 12:40:39 PM

Integration File signal 1: autoint1.e
 Integration File signal 2: autoint2.e
 Quant Time: Dec 16 14:00:35 2020
 Quant Method : Z:\pestpcbsrv\HPCHEM1\ECD_0\methods\PO121020.M
 Quant Title : GC EXTRACTABLES
 QLast Update : Fri Dec 11 03:58:06 2020
 Response via : Initial Calibration
 Integrator: ChemStation 6890 Scale Mode: Small noise peaks clipped

Volume Inj. : 2 µl
 Signal #1 Phase : ZB-MR1 Signal #2 Phase: ZB-MR2
 Signal #1 Info : 30Mx0.32mmx 0.50µ Signal #2 Info : 30M x 0.32mm x 0.25µm

Compound	RT#1	RT#2	Resp#1	Resp#2	ng/ml	ng/ml

System Monitoring Compounds						
1) SA Tetrachlo...	4.936	3.996	2081107	1143695	22.762	21.323
2) SA Decachlor...	10.956	9.258	2033847	1048584	24.611	22.410
Target Compounds						
16) L4 AR-1242-1	6.259	5.244	2426969	899843	856.304m	511.619m#
17) L4 AR-1242-2	6.284	5.264	3087478	1029764	792.736m	421.045 #
18) L4 AR-1242-3	6.352	5.453	1696764	989709	715.313m	756.241
19) L4 AR-1242-4	6.456	5.550	1237026	2155919	627.561m	1722.650 #
20) L4 AR-1242-5	7.242	6.111	1840778	1779174	842.911	1043.753m
31) L7 AR-1260-1	7.951	6.824	547108	2099540	129.449	679.178 #
32) L7 AR-1260-2	8.218	7.018	583470	425390	103.861	104.866
33) L7 AR-1260-3	8.584	7.170	269573	362815	58.973	103.949 #
34) L7 AR-1260-4	8.813	7.651	363109	173478	76.695	57.448 #
35) L7 AR-1260-5	9.142	7.897	584985	348264	58.617	46.621

(f)=RT Delta > 1/2 Window (#)=Amounts differ by > 25% (m)=manual int.

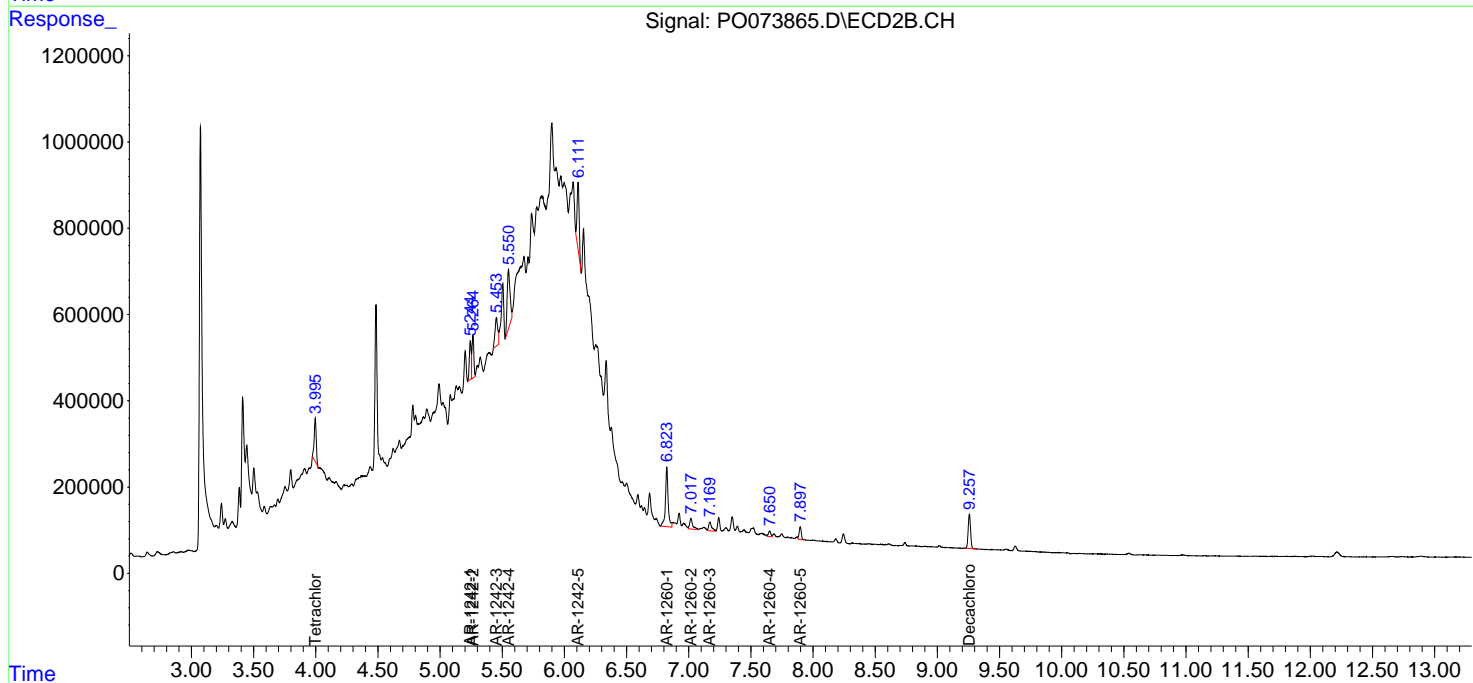
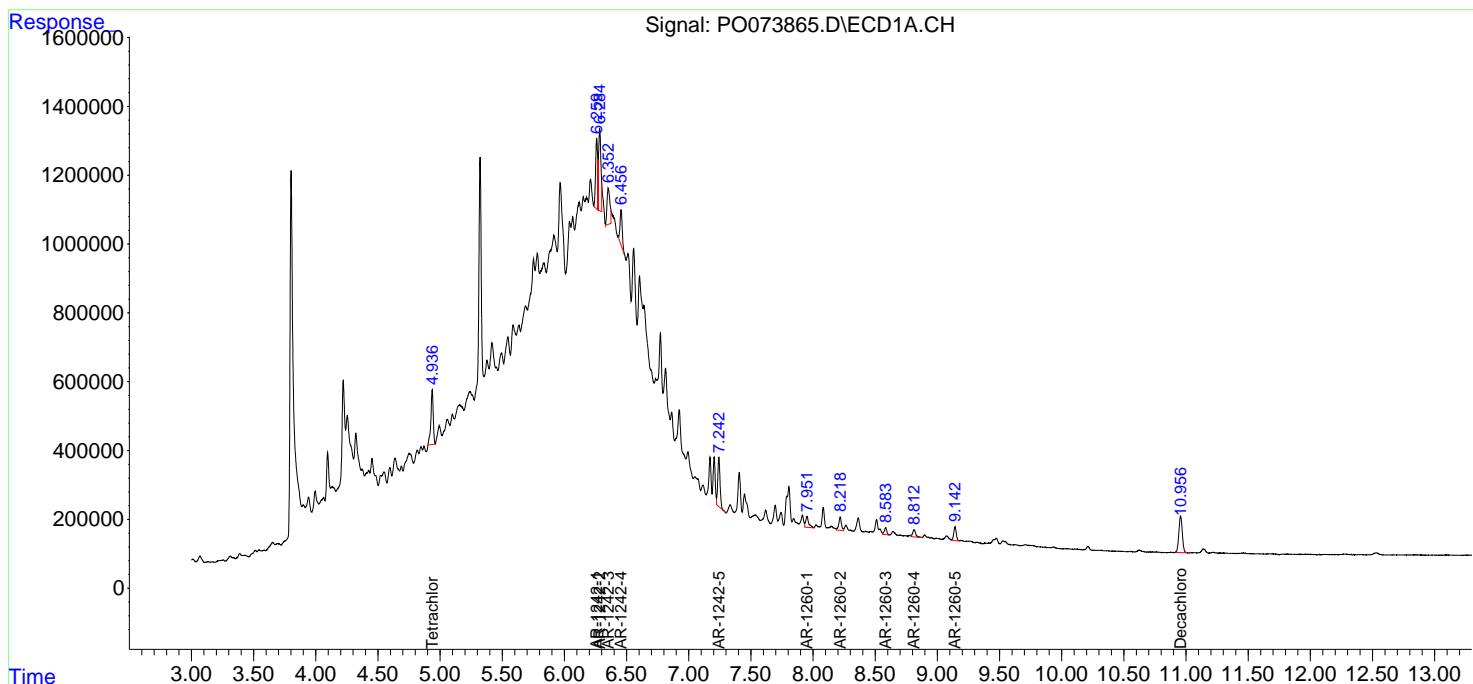
Data Path : Z:\pestpcbsrv\HPCHEM1\ECD_0\Data\PO121620\
 Data File : P0073865.D
 Signal(s) : Signal #1: ECD1A.CH Signal #2: ECD2B.CH
 Acq On : 16 Dec 2020 10:37
 Operator : DD\AJ
 Sample : L5092-01
 Misc :
 ALS Vial : 8 Sample Multiplier: 1

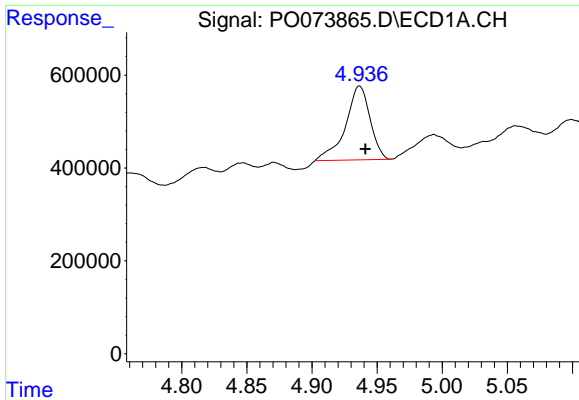
Instrument :
 ECD_O
Client Sampled :
 HR-02-12142020

Manual Integrations
APPROVED
 Ankita
 12/17/2020 12:40:39 PM

Integration File signal 1: autoint1.e
 Integration File signal 2: autoint2.e
 Quant Time: Dec 16 14:00:35 2020
 Quant Method : Z:\pestpcbsrv\HPCHEM1\ECD_0\methods\PO121020.M
 Quant Title : GC EXTRACTABLES
 QLast Update : Fri Dec 11 03:58:06 2020
 Response via : Initial Calibration
 Integrator: ChemStation 6890 Scale Mode: Small noise peaks clipped

Volume Inj. : 2 µl
 Signal #1 Phase : ZB-MR1 Signal #2 Phase: ZB-MR2
 Signal #1 Info : 30Mx0.32mmx 0.50µ Signal #2 Info : 30M x 0.32mm x 0.25µm

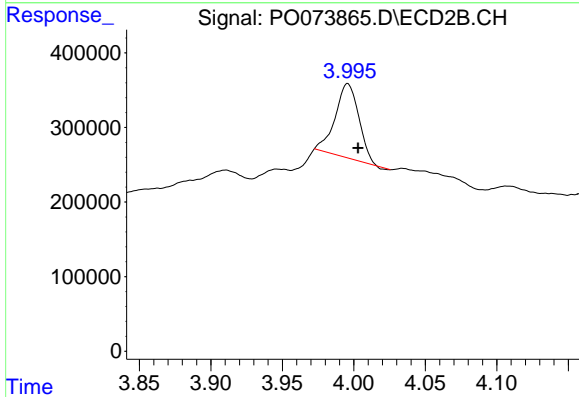




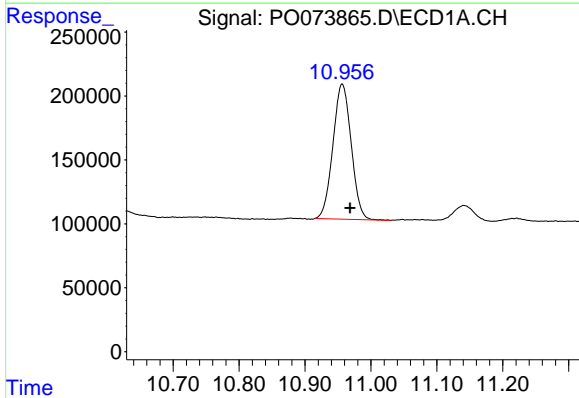
#1 Tetrachloro-m-xylene
 R.T.: 4.936 min
 Delta R.T.: -0.005 min
 Response: 2081107
 Conc: 22.76 ng/ml

Instrument :
 ECD_O
 ClientSampleId :
 HR-02-12142020

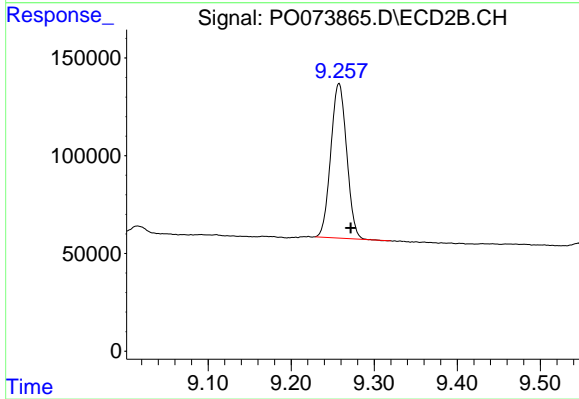
Manual Integrations
APPROVED
 Ankita
 12/17/2020 12:40:39 PM



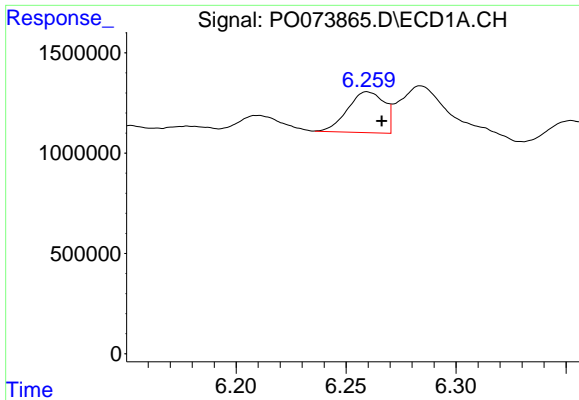
#1 Tetrachloro-m-xylene
 R.T.: 3.996 min
 Delta R.T.: -0.007 min
 Response: 1143695
 Conc: 21.32 ng/ml



#2 Decachlorobiphenyl
 R.T.: 10.956 min
 Delta R.T.: -0.012 min
 Response: 2033847
 Conc: 24.61 ng/ml



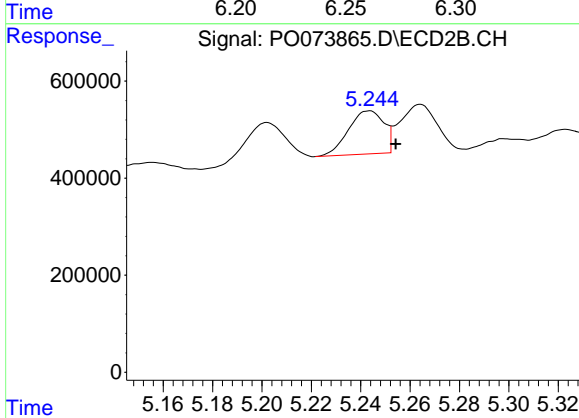
#2 Decachlorobiphenyl
 R.T.: 9.258 min
 Delta R.T.: -0.014 min
 Response: 1048584
 Conc: 22.41 ng/ml



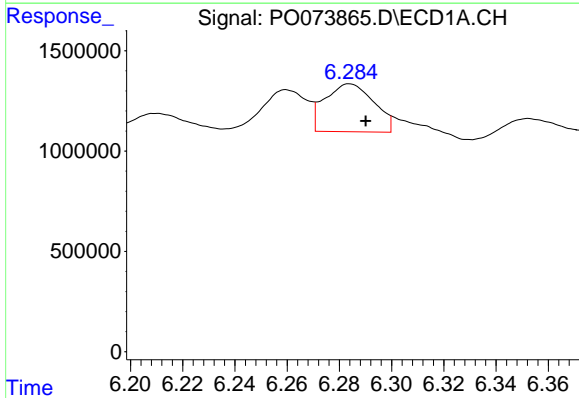
#16 AR-1242-1
 R.T.: 6.259 min
 Delta R.T.: -0.007 min
 Response: 2426969
 Conc: 856.30 ng/ml m

Instrument :
 ECD_O
ClientSampled :
 HR-02-12142020

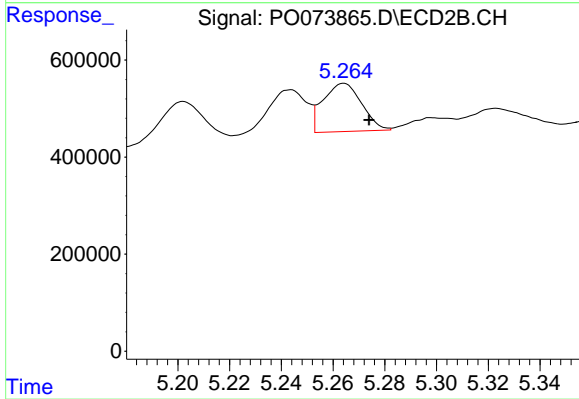
Manual Integrations
APPROVED
 Ankita
 12/17/2020 12:40:39 PM



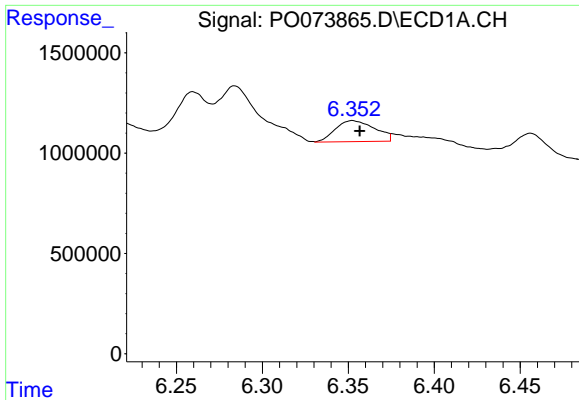
#16 AR-1242-1
 R.T.: 5.244 min
 Delta R.T.: -0.011 min
 Response: 899843
 Conc: 511.62 ng/ml m



#17 AR-1242-2
 R.T.: 6.284 min
 Delta R.T.: -0.007 min
 Response: 3087478
 Conc: 792.74 ng/ml m



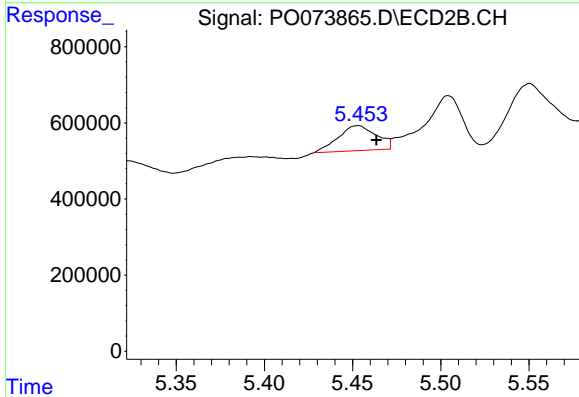
#17 AR-1242-2
 R.T.: 5.264 min
 Delta R.T.: -0.010 min
 Response: 1029764
 Conc: 421.05 ng/ml



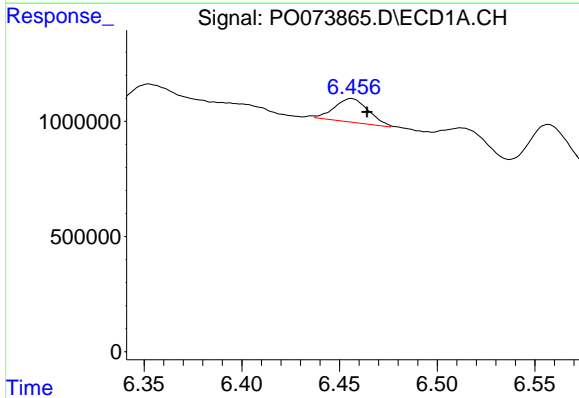
#18 AR-1242-3
 R.T.: 6.352 min
 Delta R.T.: -0.005 min
 Response: 1696764
 Conc: 715.31 ng/ml m

Instrument :
 ECD_O
ClientSampleId :
 HR-02-12142020

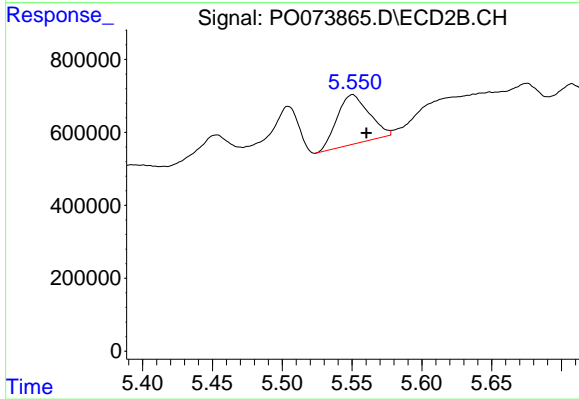
Manual Integrations
APPROVED
 Ankita
 12/17/2020 12:40:39 PM



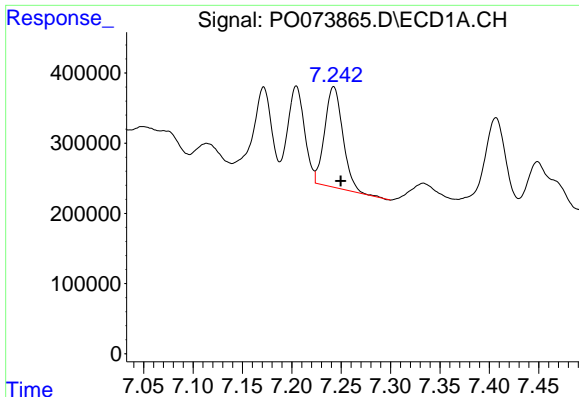
#18 AR-1242-3
 R.T.: 5.453 min
 Delta R.T.: -0.011 min
 Response: 989709
 Conc: 756.24 ng/ml



#19 AR-1242-4
 R.T.: 6.456 min
 Delta R.T.: -0.008 min
 Response: 1237026
 Conc: 627.56 ng/ml m



#19 AR-1242-4
 R.T.: 5.550 min
 Delta R.T.: -0.010 min
 Response: 2155919
 Conc: 1722.65 ng/ml

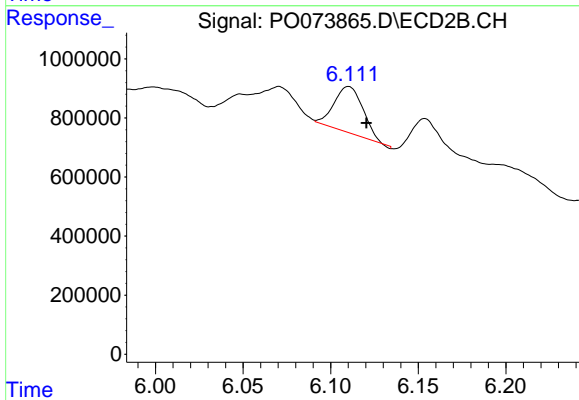


#20 AR-1242-5

R.T.: 7.242 min
 Delta R.T.: -0.007 min
 Response: 1840778
 Conc: 842.91 ng/ml

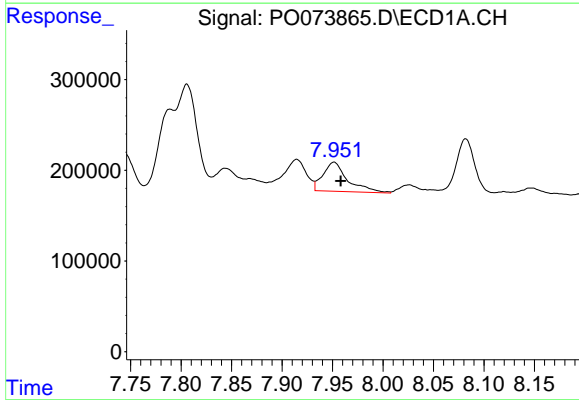
Instrument :
 ECD_O
 ClientSampleId :
 HR-02-12142020

Manual Integrations
APPROVED
 Ankita
 12/17/2020 12:40:39 PM



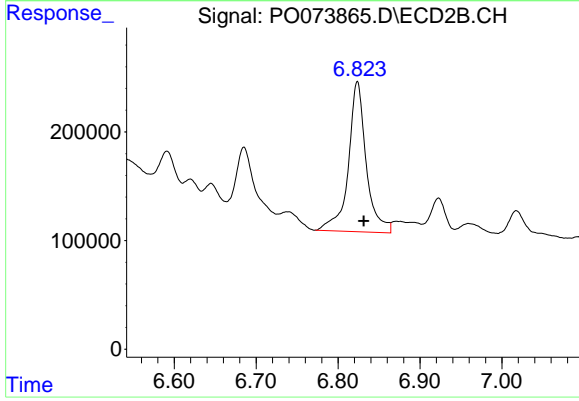
#20 AR-1242-5

R.T.: 6.111 min
 Delta R.T.: -0.009 min
 Response: 1779174
 Conc: 1043.75 ng/ml m



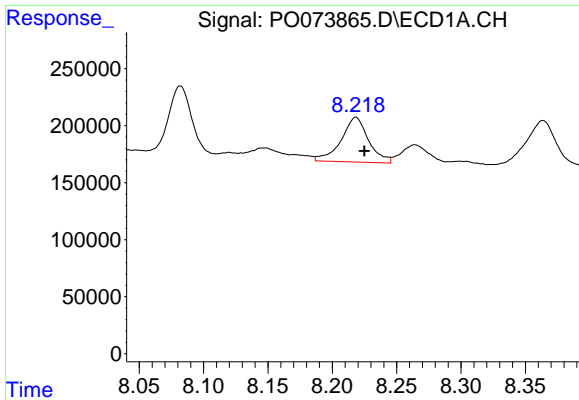
#31 AR-1260-1

R.T.: 7.951 min
 Delta R.T.: -0.007 min
 Response: 547108
 Conc: 129.45 ng/ml



#31 AR-1260-1

R.T.: 6.824 min
 Delta R.T.: -0.008 min
 Response: 2099540
 Conc: 679.18 ng/ml

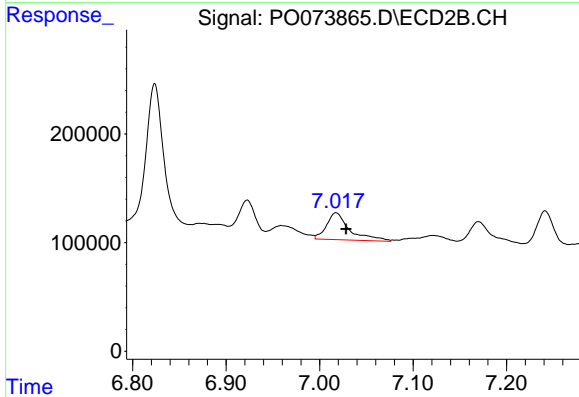


#32 AR-1260-2

R.T.: 8.218 min
 Delta R.T.: -0.006 min
 Response: 583470
 Conc: 103.86 ng/ml

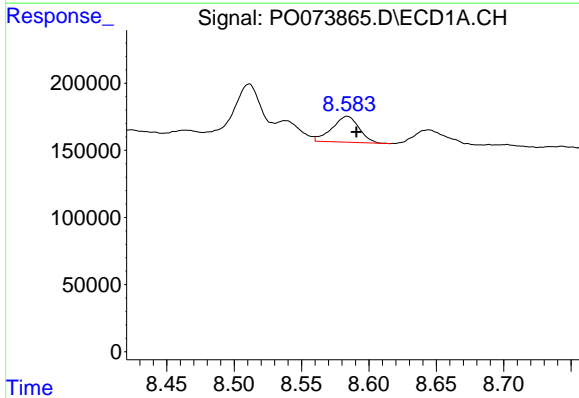
Instrument :
 ECD_O
 ClientSampled :
 HR-02-12142020

Manual Integrations
 APPROVED
 Ankita
 12/17/2020 12:40:39 PM



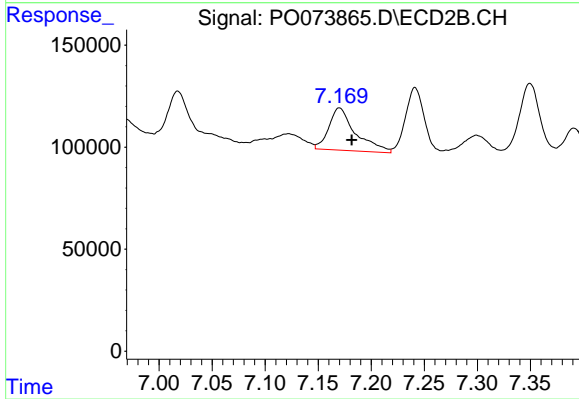
#32 AR-1260-2

R.T.: 7.018 min
 Delta R.T.: -0.011 min
 Response: 425390
 Conc: 104.87 ng/ml



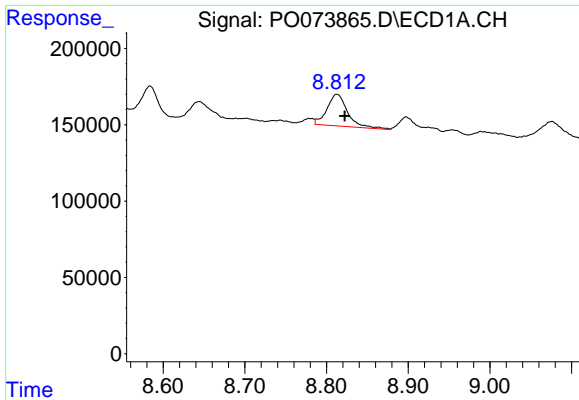
#33 AR-1260-3

R.T.: 8.584 min
 Delta R.T.: -0.007 min
 Response: 269573
 Conc: 58.97 ng/ml



#33 AR-1260-3

R.T.: 7.170 min
 Delta R.T.: -0.012 min
 Response: 362815
 Conc: 103.95 ng/ml

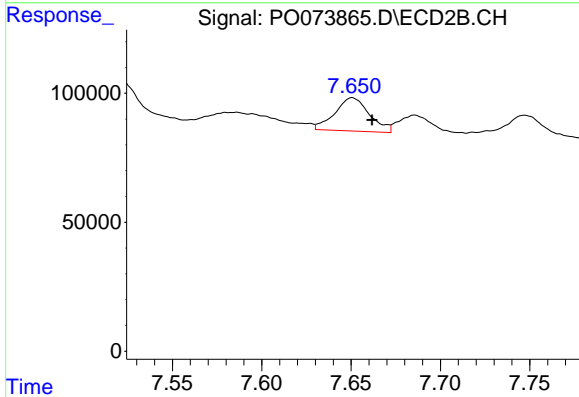


#34 AR-1260-4

R.T.: 8.813 min
 Delta R.T.: -0.010 min
 Response: 363109
 Conc: 76.70 ng/ml

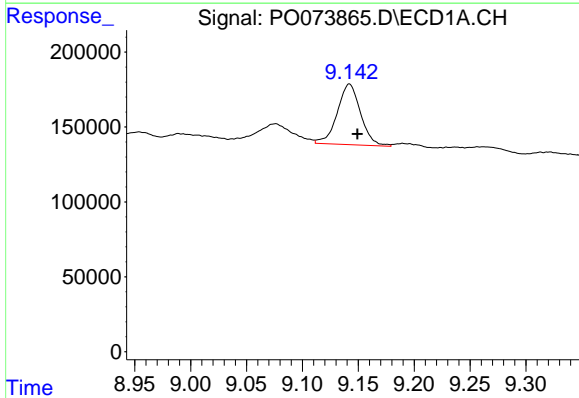
Instrument :
 ECD_O
 ClientSampleId :
 HR-02-12142020

Manual Integrations
APPROVED
 Ankita
 12/17/2020 12:40:39 PM



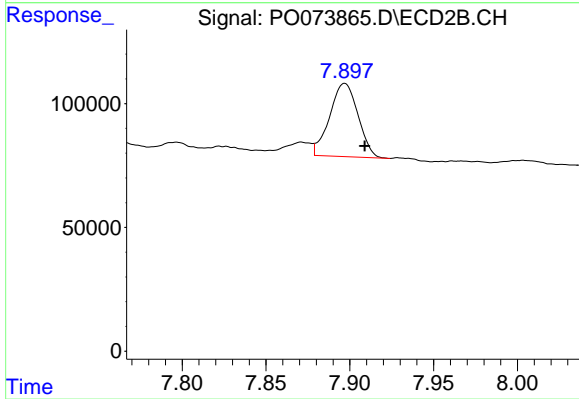
#34 AR-1260-4

R.T.: 7.651 min
 Delta R.T.: -0.011 min
 Response: 173478
 Conc: 57.45 ng/ml



#35 AR-1260-5

R.T.: 9.142 min
 Delta R.T.: -0.007 min
 Response: 584985
 Conc: 58.62 ng/ml



#35 AR-1260-5

R.T.: 7.897 min
 Delta R.T.: -0.012 min
 Response: 348264
 Conc: 46.62 ng/ml