

Data Path : Z:\pestpcbsrv\HPCHEM1\ECD\_0\Data\PO121620\  
 Data File : PO073876.D  
 Signal(s) : Signal #1: ECD1A.CH Signal #2: ECD2B.CH  
 Acq On : 16 Dec 2020 14:03  
 Operator : DD\AJ  
 Sample : PB133643BL  
 Misc :  
 ALS Vial : 13 Sample Multiplier: 1

Instrument :  
 ECD\_0  
 ClientSampleId :  
 PB133643BL

Integration File signal 1: autoint1.e  
 Integration File signal 2: autoint2.e  
 Quant Time: Dec 16 16:19:39 2020  
 Quant Method : Z:\pestpcbsrv\HPCHEM1\ECD\_0\methods\PO121020.M  
 Quant Title : GC EXTRACTABLES  
 QLast Update : Fri Dec 11 03:58:06 2020  
 Response via : Initial Calibration  
 Integrator: ChemStation 6890 Scale Mode: Small noise peaks clipped

Volume Inj. : 2 µl  
 Signal #1 Phase : ZB-MR1 Signal #2 Phase: ZB-MR2  
 Signal #1 Info : 30Mx0.32mmx 0.50µ Signal #2 Info : 30M x 0.32mm x 0.25µm

Compound	RT#1	RT#2	Resp#1	Resp#2	ng/ml	ng/ml
-----						
System Monitoring Compounds						
1) SA Tetrachlo...	4.937	3.996	2054493	1164607	22.471	21.713
2) SA Decachlor...	10.958	9.259	2144636	1247315	25.952	26.657

Target Compounds

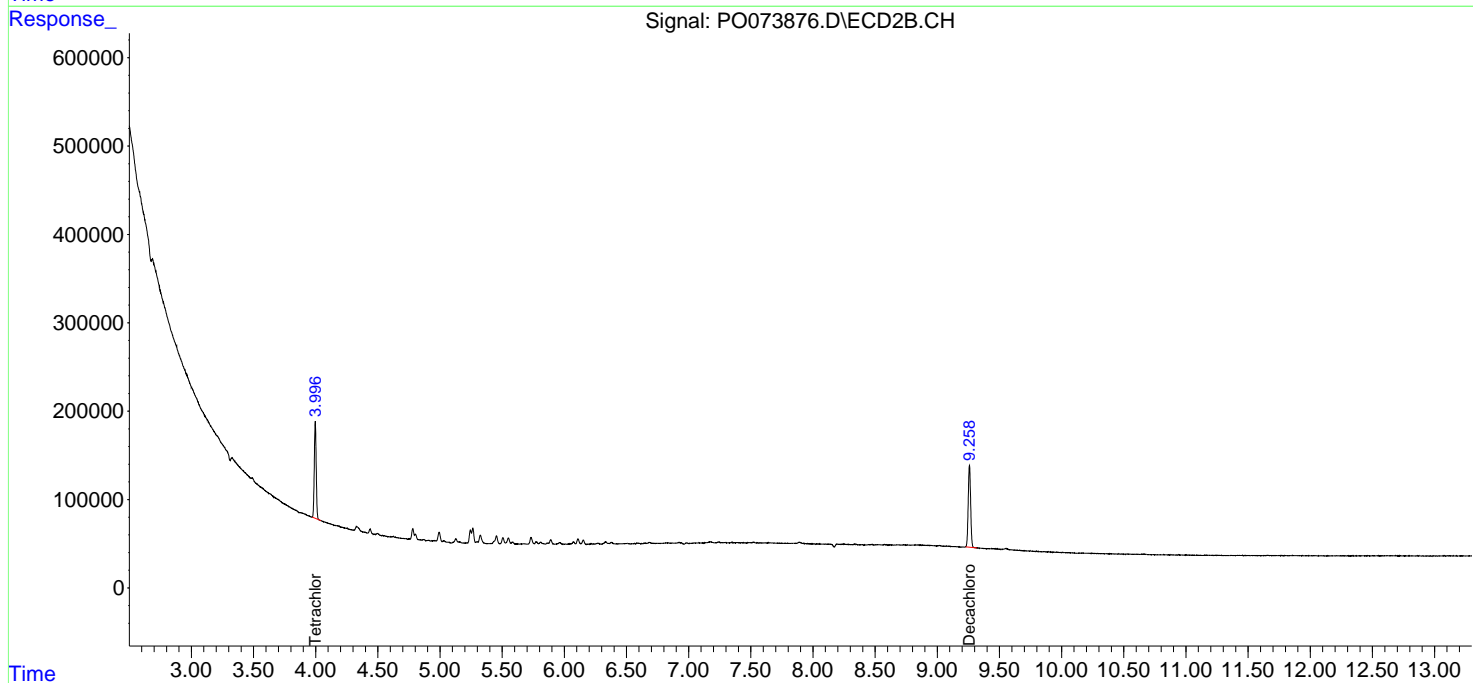
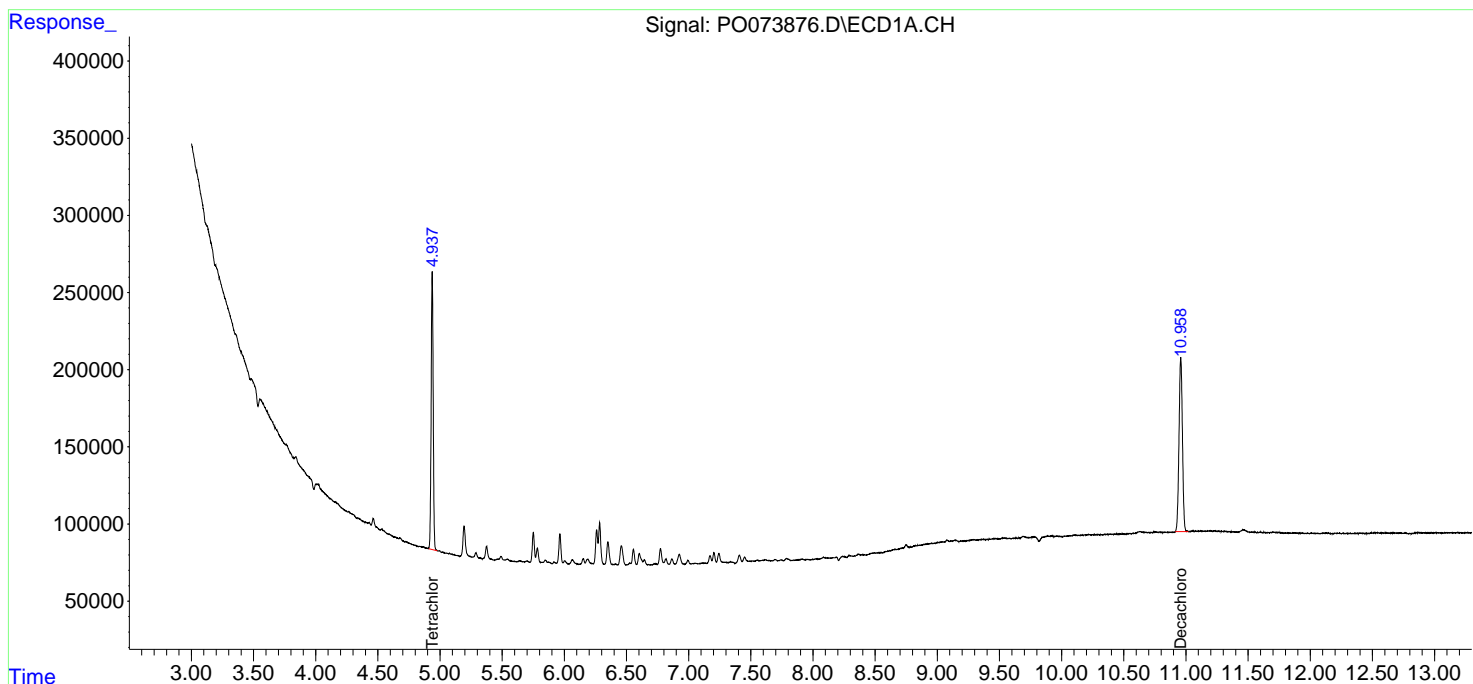
(f)=RT Delta > 1/2 Window (#)=Amounts differ by > 25% (m)=manual int.

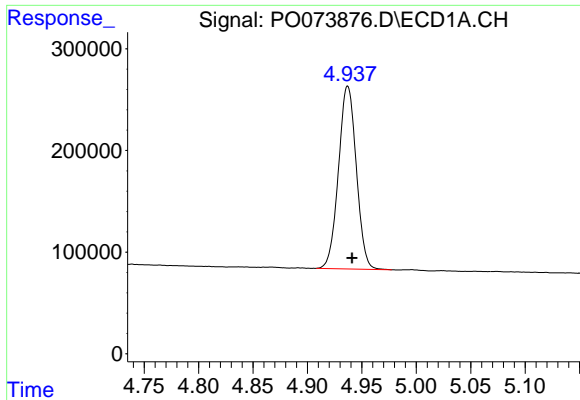
Data Path : Z:\pestpcbsrv\HPCHEM1\ECD\_0\Data\PO121620\  
 Data File : PO073876.D  
 Signal(s) : Signal #1: ECD1A.CH Signal #2: ECD2B.CH  
 Acq On : 16 Dec 2020 14:03  
 Operator : DD\AJ  
 Sample : PB133643BL  
 Misc :  
 ALS Vial : 13 Sample Multiplier: 1

Instrument :  
 ECD\_O  
 ClientSampleId :  
 PB133643BL

Integration File signal 1: autoint1.e  
 Integration File signal 2: autoint2.e  
 Quant Time: Dec 16 16:19:39 2020  
 Quant Method : Z:\pestpcbsrv\HPCHEM1\ECD\_0\methods\PO121020.M  
 Quant Title : GC EXTRACTABLES  
 QLast Update : Fri Dec 11 03:58:06 2020  
 Response via : Initial Calibration  
 Integrator: ChemStation 6890 Scale Mode: Small noise peaks clipped

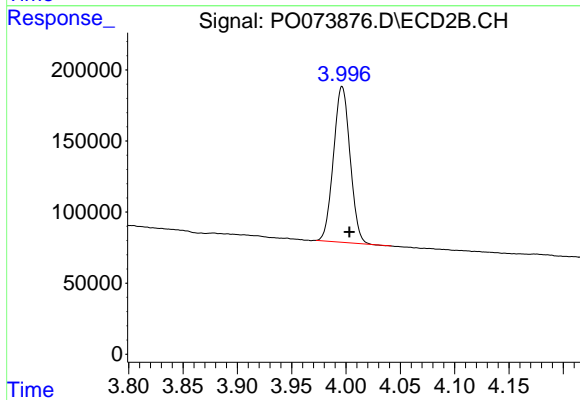
Volume Inj. : 2 µl  
 Signal #1 Phase : ZB-MR1 Signal #2 Phase: ZB-MR2  
 Signal #1 Info : 30Mx0.32mmx 0.50µ Signal #2 Info : 30M x 0.32mm x 0.25µm



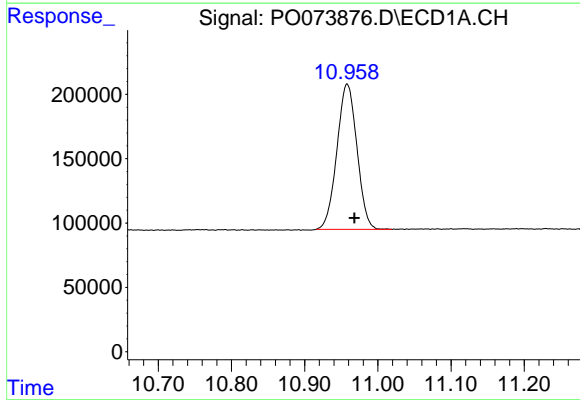


#1 Tetrachloro-m-xylene  
 R.T.: 4.937 min  
 Delta R.T.: -0.004 min  
 Response: 2054493  
 Conc: 22.47 ng/ml

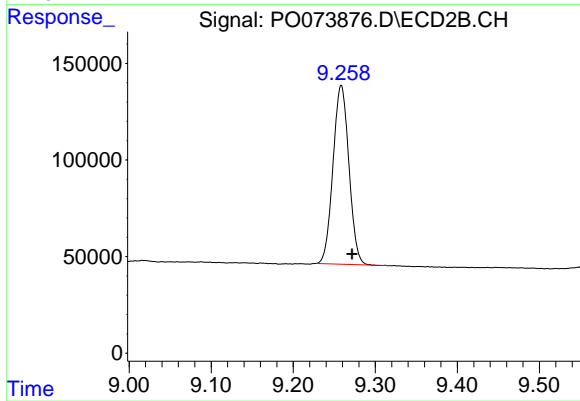
Instrument :  
 ECD\_O  
 ClientSampleId :  
 PB133643BL



#1 Tetrachloro-m-xylene  
 R.T.: 3.996 min  
 Delta R.T.: -0.007 min  
 Response: 1164607  
 Conc: 21.71 ng/ml



#2 Decachlorobiphenyl  
 R.T.: 10.958 min  
 Delta R.T.: -0.010 min  
 Response: 2144636  
 Conc: 25.95 ng/ml



#2 Decachlorobiphenyl  
 R.T.: 9.259 min  
 Delta R.T.: -0.013 min  
 Response: 1247315  
 Conc: 26.66 ng/ml