

Data Path : Z:\pestpcbsrv\HPCHEM1\ECD\_0\Data\PO121620\  
 Data File : PO073902.D  
 Signal(s) : Signal #1: ECD1A.CH Signal #2: ECD2B.CH  
 Acq On : 16 Dec 2020 21:27  
 Operator : DD\AJ  
 Sample : L5120-18  
 Misc :  
 ALS Vial : 37 Sample Multiplier: 1

Instrument :  
 ECD\_0  
 ClientSampleId :  
 K650-7C

Integration File signal 1: autoint1.e  
 Integration File signal 2: autoint2.e  
 Quant Time: Dec 17 05:47:30 2020  
 Quant Method : Z:\pestpcbsrv\HPCHEM1\ECD\_0\methods\PO121020.M  
 Quant Title : GC EXTRACTABLES  
 QLast Update : Fri Dec 11 03:58:06 2020  
 Response via : Initial Calibration  
 Integrator: ChemStation 6890 Scale Mode: Small noise peaks clipped

Volume Inj. : 2 µl  
 Signal #1 Phase : ZB-MR1 Signal #2 Phase: ZB-MR2  
 Signal #1 Info : 30Mx0.32mmx 0.50µ Signal #2 Info : 30M x 0.32mm x 0.25µm

Compound	RT#1	RT#2	Resp#1	Resp#2	ng/ml	ng/ml
-----						
System Monitoring Compounds						
1) SA Tetrachlo...	4.937	3.996	1681940	1101252	18.396	20.532
2) SA Decachlor...	10.962	9.260	1305702	842681	15.800	18.010

Target Compounds

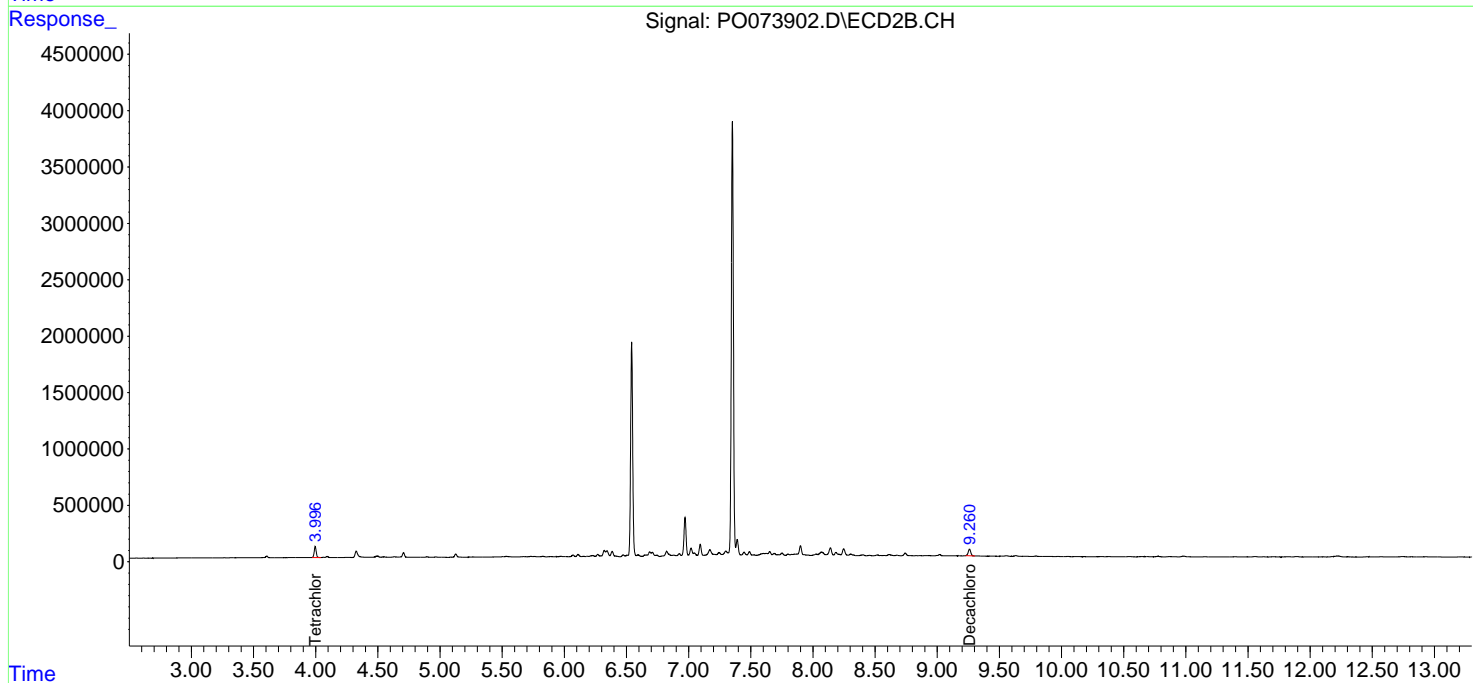
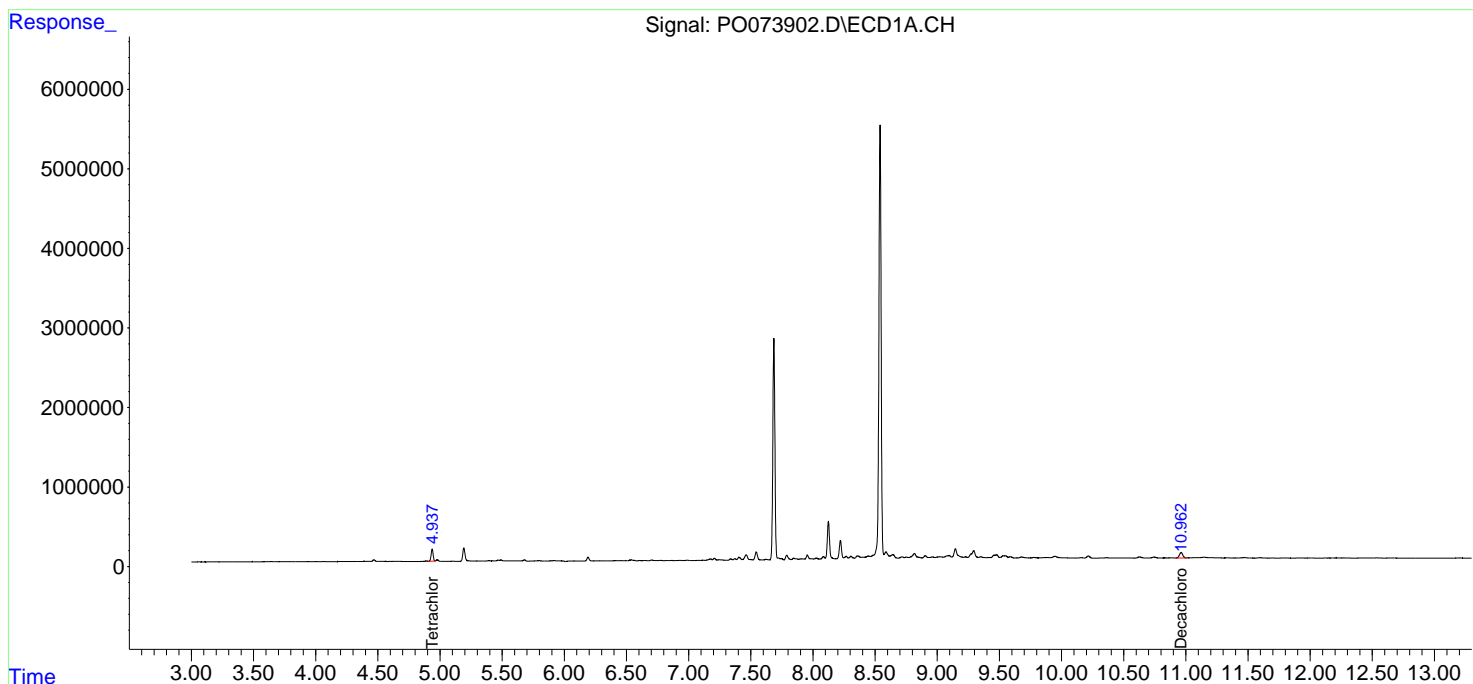
(f)=RT Delta > 1/2 Window (#)=Amounts differ by > 25% (m)=manual int.

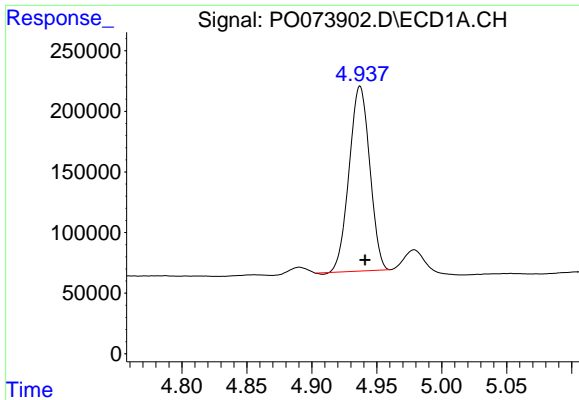
Data Path : Z:\pestpcbsrv\HPCHEM1\ECD\_0\Data\PO121620\  
 Data File : PO073902.D  
 Signal(s) : Signal #1: ECD1A.CH Signal #2: ECD2B.CH  
 Acq On : 16 Dec 2020 21:27  
 Operator : DD\AJ  
 Sample : L5120-18  
 Misc :  
 ALS Vial : 37 Sample Multiplier: 1

Instrument :  
 ECD\_O  
 ClientSampleId :  
 K650-7C

Integration File signal 1: autoint1.e  
 Integration File signal 2: autoint2.e  
 Quant Time: Dec 17 05:47:30 2020  
 Quant Method : Z:\pestpcbsrv\HPCHEM1\ECD\_0\methods\PO121020.M  
 Quant Title : GC EXTRACTABLES  
 QLast Update : Fri Dec 11 03:58:06 2020  
 Response via : Initial Calibration  
 Integrator: ChemStation 6890 Scale Mode: Small noise peaks clipped

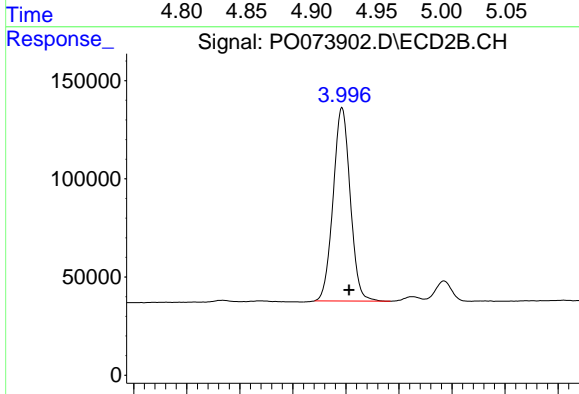
Volume Inj. : 2 µl  
 Signal #1 Phase : ZB-MR1 Signal #2 Phase: ZB-MR2  
 Signal #1 Info : 30Mx0.32mmx 0.50µ Signal #2 Info : 30M x 0.32mm x 0.25µm



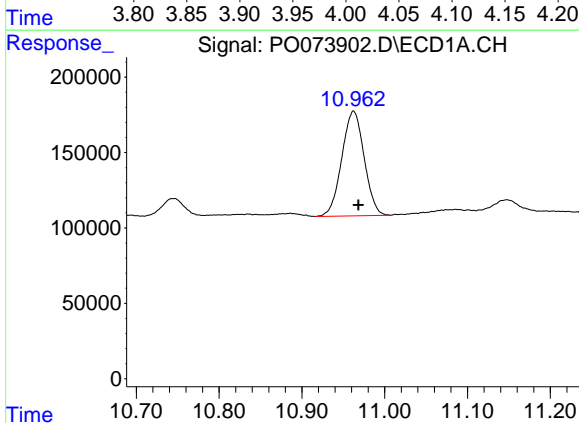


#1 Tetrachloro-m-xylene  
 R.T.: 4.937 min  
 Delta R.T.: -0.004 min  
 Response: 1681940  
 Conc: 18.40 ng/ml

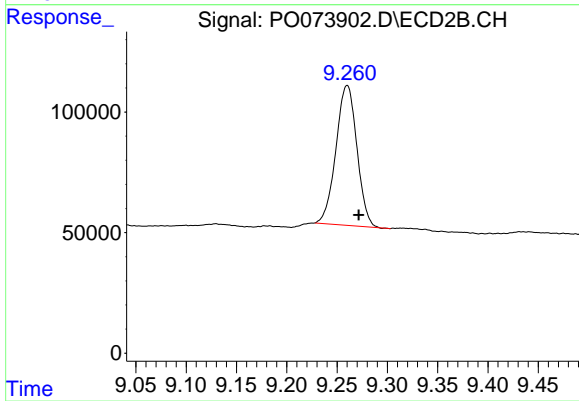
Instrument :  
 ECD\_O  
 ClientSampleId :  
 K650-7C



#1 Tetrachloro-m-xylene  
 R.T.: 3.996 min  
 Delta R.T.: -0.007 min  
 Response: 1101252  
 Conc: 20.53 ng/ml



#2 Decachlorobiphenyl  
 R.T.: 10.962 min  
 Delta R.T.: -0.006 min  
 Response: 1305702  
 Conc: 15.80 ng/ml



#2 Decachlorobiphenyl  
 R.T.: 9.260 min  
 Delta R.T.: -0.012 min  
 Response: 842681  
 Conc: 18.01 ng/ml