

Data Path : Z:\pestpcbsrv\HPCHEM1\ECD_0\Data\PO121621\
 Data File : PO083752.D
 Signal(s) : Signal #1: ECD1A.CH Signal #2: ECD2B.CH
 Acq On : 16 Dec 2021 13:52
 Operator : AJ\MA
 Sample : M5077-08
 Misc :
 ALS Vial : 19 Sample Multiplier: 1

Instrument :
 ECD_0
 ClientSampleId :
 08-A-08-B-08-C

Integration File signal 1: autoint1.e
 Integration File signal 2: autoint2.e
 Quant Time: Dec 17 01:29:54 2021
 Quant Method : Z:\pestpcbsrv\HPCHEM1\ECD_0\methods\PO121521.M
 Quant Title : GC EXTRACTABLES
 QLast Update : Thu Dec 16 04:05:27 2021
 Response via : Initial Calibration
 Integrator: ChemStation 6890 Scale Mode: Small noise peaks clipped

Volume Inj. : 2 µl
 Signal #1 Phase : ZB-MR1 Signal #2 Phase: ZB-MR2
 Signal #1 Info : 30Mx0.32mmx 0.50µ Signal #2 Info : 30M x 0.32mm x 0.25µm

Compound	RT#1	RT#2	Resp#1	Resp#2	ng/ml	ng/ml

System Monitoring Compounds						
1) SA Tetrachlo...	4.934	3.940	1922889	601879	20.184	20.519
2) SA Decachlor...	11.008	9.236	1522913	633656	22.234	22.567

Target Compounds

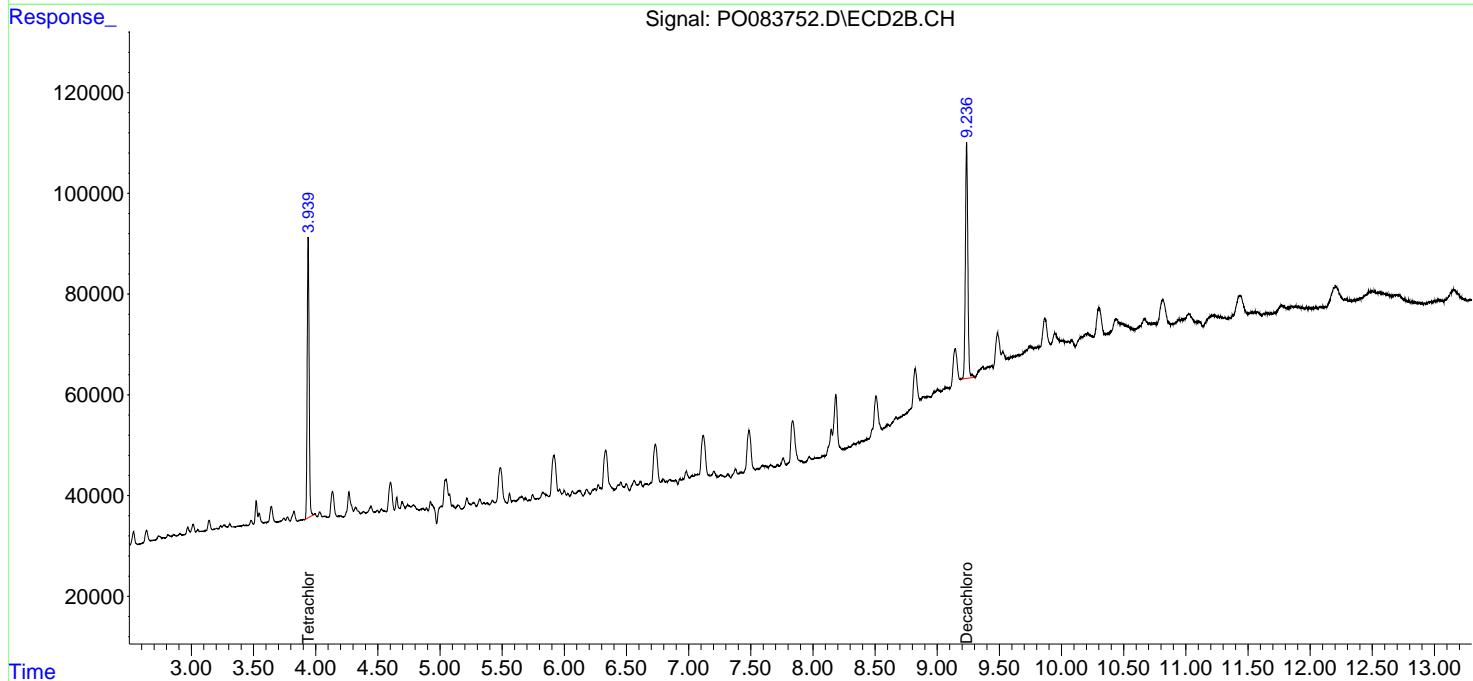
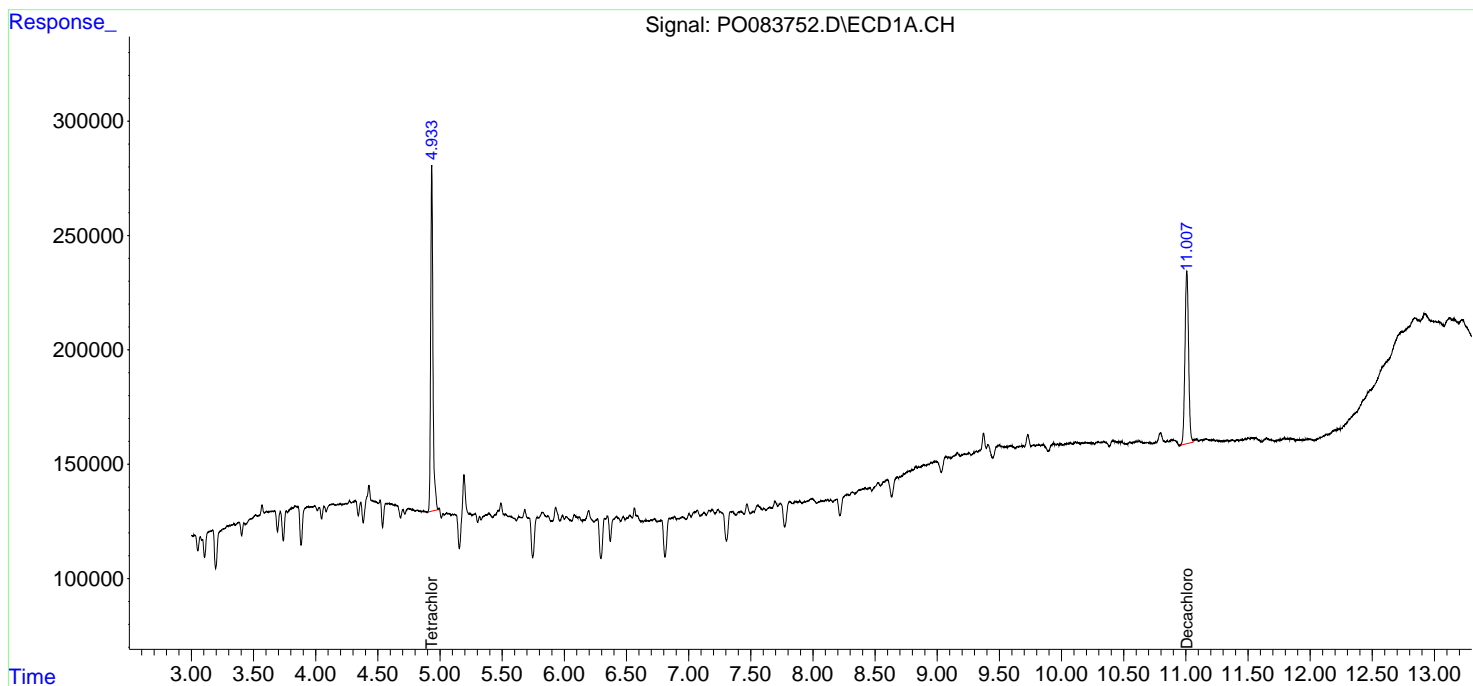
(f)=RT Delta > 1/2 Window (#)=Amounts differ by > 25% (m)=manual int.

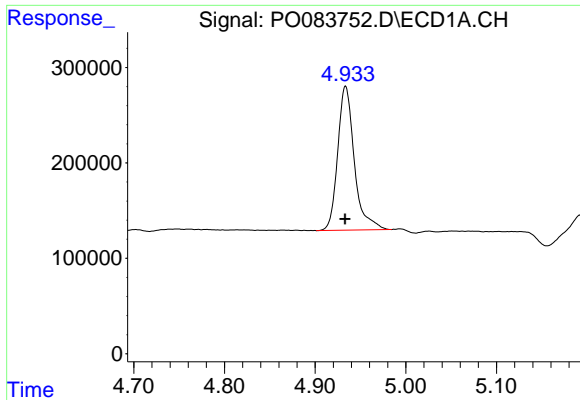
Data Path : Z:\pestpcbsrv\HPCHEM1\ECD_O\Data\PO121621\
 Data File : PO083752.D
 Signal(s) : Signal #1: ECD1A.CH Signal #2: ECD2B.CH
 Acq On : 16 Dec 2021 13:52
 Operator : AJ\MA
 Sample : M5077-08
 Misc :
 ALS Vial : 19 Sample Multiplier: 1

Instrument :
 ECD_O
 ClientSampleId :
 08-A-08-B-08-C

Integration File signal 1: autoint1.e
 Integration File signal 2: autoint2.e
 Quant Time: Dec 17 01:29:54 2021
 Quant Method : Z:\pestpcbsrv\HPCHEM1\ECD_O\methods\PO121521.M
 Quant Title : GC EXTRACTABLES
 QLast Update : Thu Dec 16 04:05:27 2021
 Response via : Initial Calibration
 Integrator: ChemStation 6890 Scale Mode: Small noise peaks clipped

Volume Inj. : 2 µl
 Signal #1 Phase : ZB-MR1 Signal #2 Phase: ZB-MR2
 Signal #1 Info : 30Mx0.32mmx 0.50µ Signal #2 Info : 30M x 0.32mm x 0.25µm

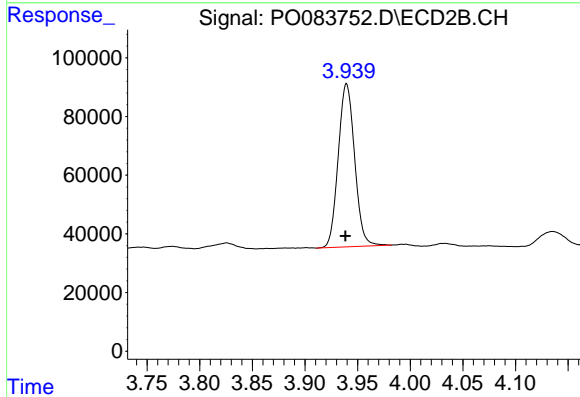




#1 Tetrachloro-m-xylene

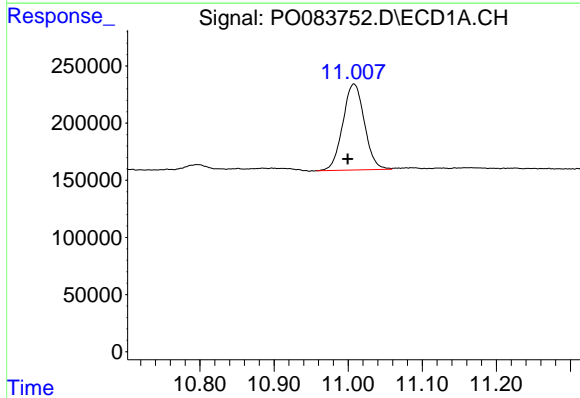
R.T.: 4.934 min
 Delta R.T.: 0.000 min
 Response: 1922889
 Conc: 20.18 ng/ml

Instrument :
 ECD_O
 ClientSampleId :
 08-A-08-B-08-C



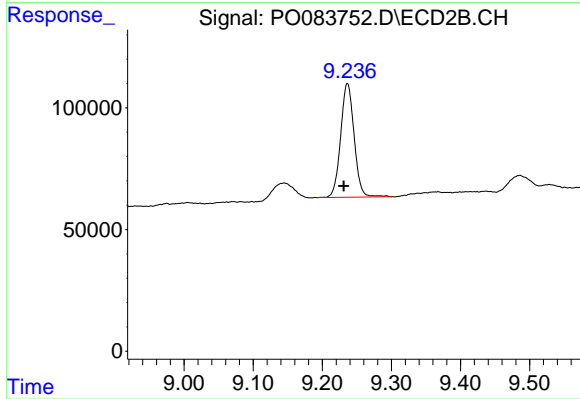
#1 Tetrachloro-m-xylene

R.T.: 3.940 min
 Delta R.T.: 0.000 min
 Response: 601879
 Conc: 20.52 ng/ml



#2 Decachlorobiphenyl

R.T.: 11.008 min
 Delta R.T.: 0.008 min
 Response: 1522913
 Conc: 22.23 ng/ml



#2 Decachlorobiphenyl

R.T.: 9.236 min
 Delta R.T.: 0.005 min
 Response: 633656
 Conc: 22.57 ng/ml