

Data Path : Z:\pestpcbsrv\HPCHEM1\ECD_0\Data\PO121621\
 Data File : PO083765.D
 Signal(s) : Signal #1: ECD1A.CH Signal #2: ECD2B.CH
 Acq On : 16 Dec 2021 18:16
 Operator : AJ\MA
 Sample : M5070-03 10X
 Misc :
 ALS Vial : 27 Sample Multiplier: 1

Instrument :
 ECD_0
 ClientSampleId :
 CLI-2021-9-B

Integration File signal 1: autoint1.e
 Integration File signal 2: autoint2.e
 Quant Time: Dec 17 01:34:19 2021
 Quant Method : Z:\pestpcbsrv\HPCHEM1\ECD_0\methods\PO121521.M
 Quant Title : GC EXTRACTABLES
 QLast Update : Thu Dec 16 04:05:27 2021
 Response via : Initial Calibration
 Integrator: ChemStation 6890 Scale Mode: Small noise peaks clipped

Volume Inj. : 2 µl
 Signal #1 Phase : ZB-MR1 Signal #2 Phase: ZB-MR2
 Signal #1 Info : 30Mx0.32mmx 0.50µ Signal #2 Info : 30M x 0.32mm x 0.25µm

Compound	RT#1	RT#2	Resp#1	Resp#2	ng/ml	ng/ml

System Monitoring Compounds						
1) SA Tetrachlo...	4.935	3.940	128249	49775	1.346	1.697 #
2) SA Decachlor...	11.009	9.238	120350	33290	1.757	1.186m#
Target Compounds						
26) L6 AR-1254-1	7.185	6.064	61371	25717	19.925m	14.015m#
27) L6 AR-1254-2	7.415	6.225	118227	27021	25.476	17.013m#
28) L6 AR-1254-3	7.801	6.645	67748	27519	14.529m	11.489
29) L6 AR-1254-4	8.096	6.887	60742	22888	17.770	13.622
30) L6 AR-1254-5	8.525	7.315	44203	19776	12.399	9.314

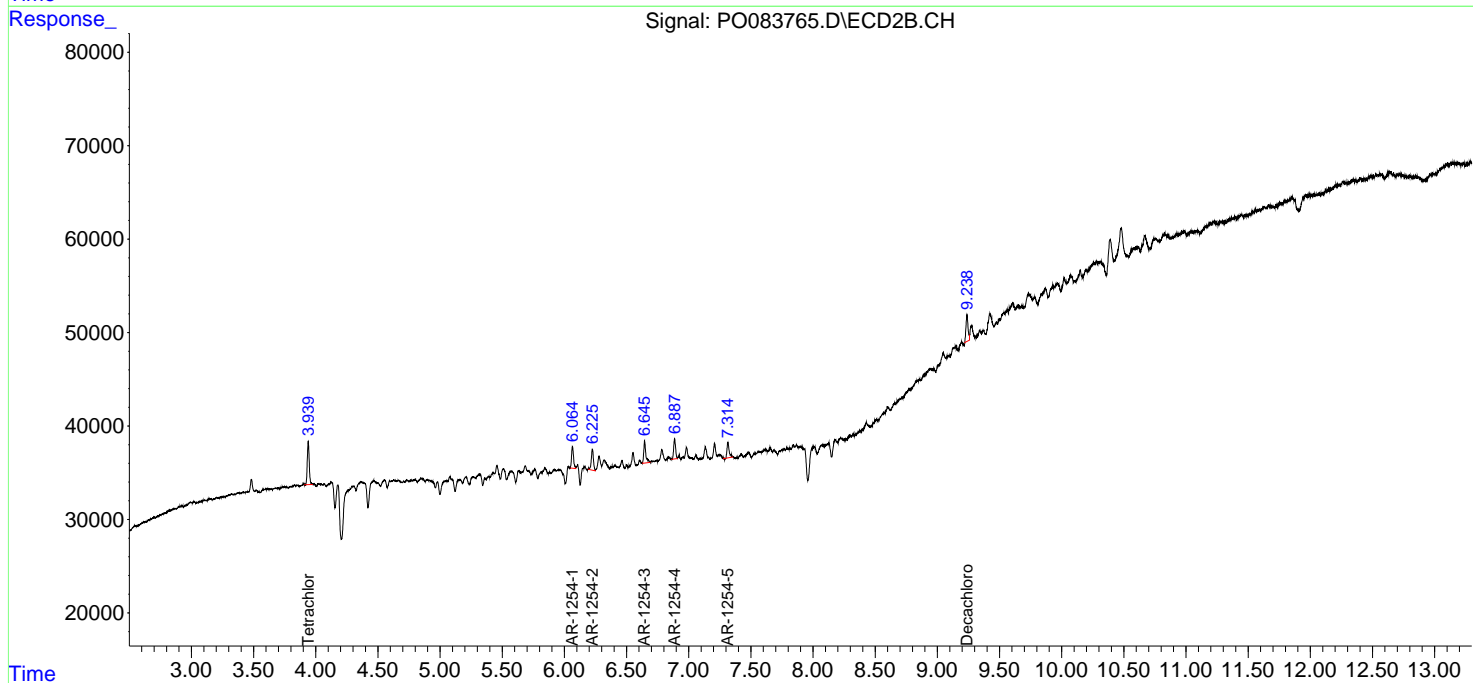
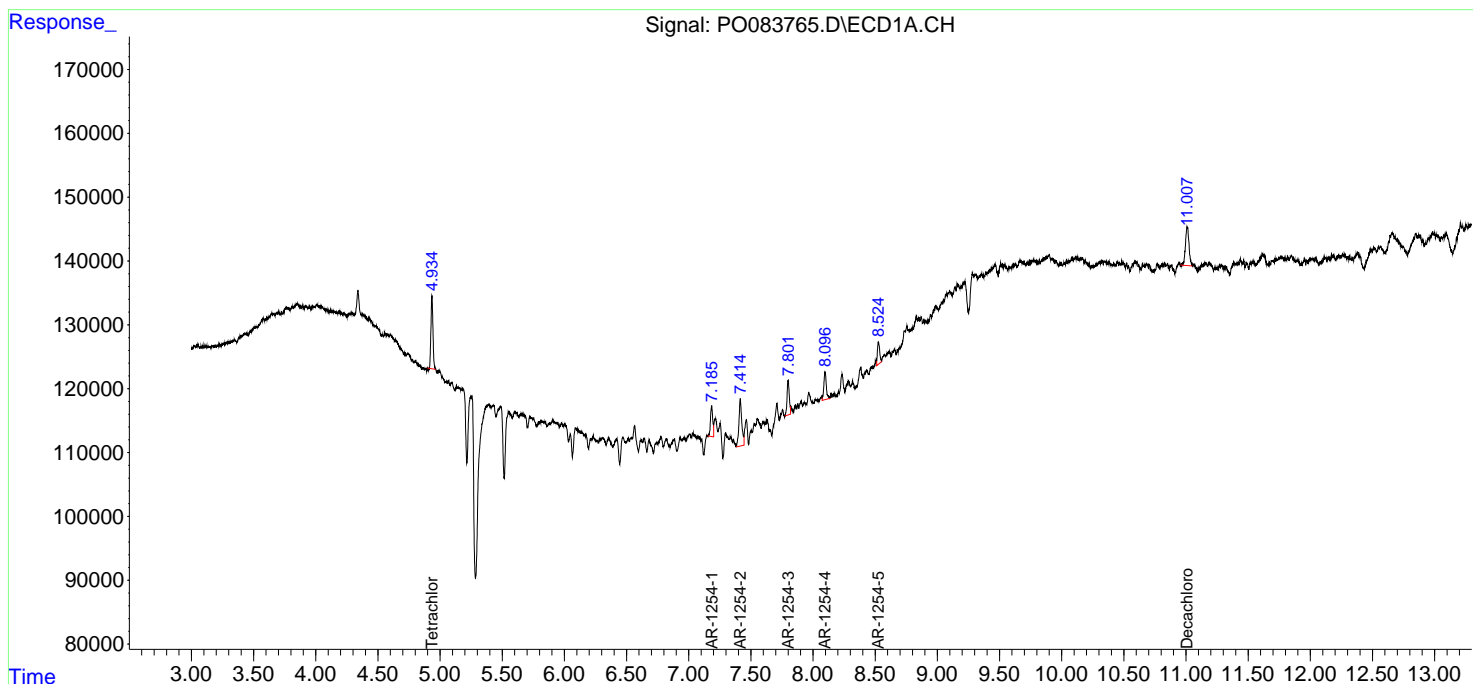
(f)=RT Delta > 1/2 Window (#)=Amounts differ by > 25% (m)=manual int.

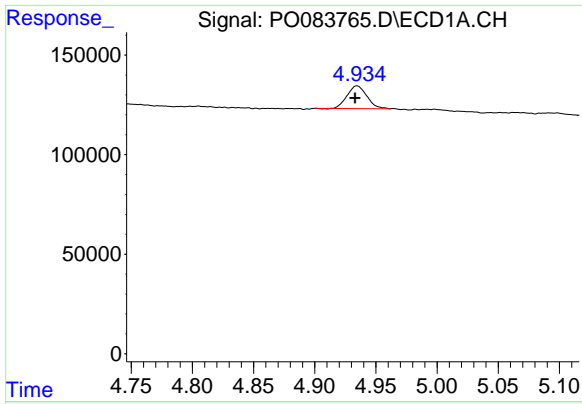
Data Path : Z:\pestpcbsrv\HPCHEM1\ECD_O\Data\PO121621\
 Data File : PO083765.D
 Signal(s) : Signal #1: ECD1A.CH Signal #2: ECD2B.CH
 Acq On : 16 Dec 2021 18:16
 Operator : AJ\MA
 Sample : M5070-03 10X
 Misc :
 ALS Vial : 27 Sample Multiplier: 1

Instrument :
 ECD_O
 ClientSampleId :
 CLI-2021-9-B

Integration File signal 1: autoint1.e
 Integration File signal 2: autoint2.e
 Quant Time: Dec 17 01:34:19 2021
 Quant Method : Z:\pestpcbsrv\HPCHEM1\ECD_O\methods\PO121521.M
 Quant Title : GC EXTRACTABLES
 QLast Update : Thu Dec 16 04:05:27 2021
 Response via : Initial Calibration
 Integrator: ChemStation 6890 Scale Mode: Small noise peaks clipped

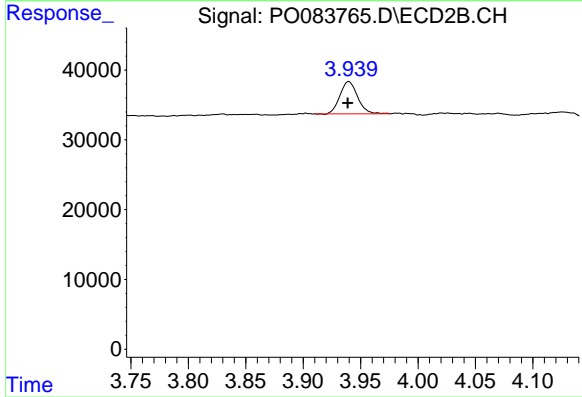
Volume Inj. : 2 µl
 Signal #1 Phase : ZB-MR1 Signal #2 Phase: ZB-MR2
 Signal #1 Info : 30Mx0.32mmx 0.50µ Signal #2 Info : 30M x 0.32mm x 0.25µm



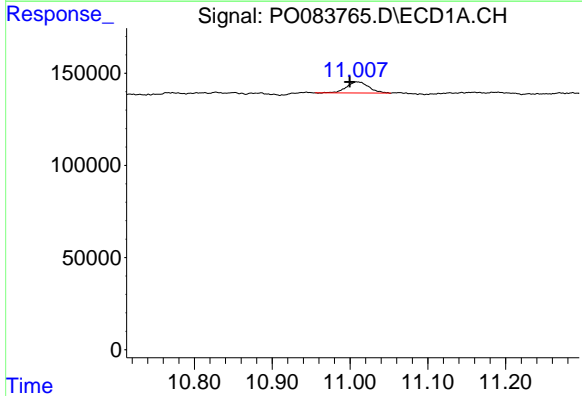


#1 Tetrachloro-m-xylene
 R.T.: 4.935 min
 Delta R.T.: 0.002 min
 Response: 128249
 Conc: 1.35 ng/ml

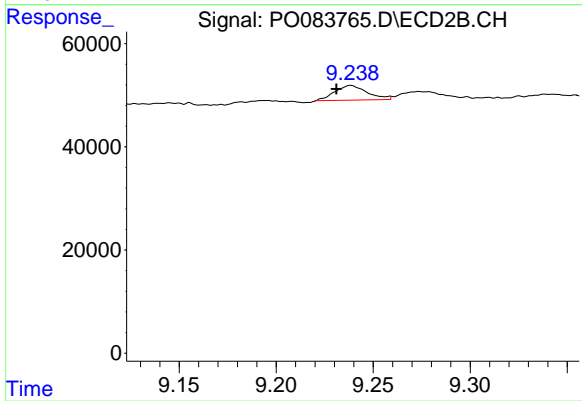
Instrument :
 ECD_O
 ClientSampleId :
 CLI-2021-9-B



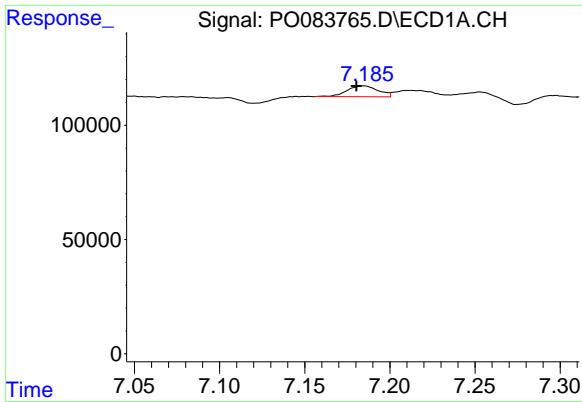
#1 Tetrachloro-m-xylene
 R.T.: 3.940 min
 Delta R.T.: 0.001 min
 Response: 49775
 Conc: 1.70 ng/ml



#2 Decachlorobiphenyl
 R.T.: 11.009 min
 Delta R.T.: 0.009 min
 Response: 120350
 Conc: 1.76 ng/ml



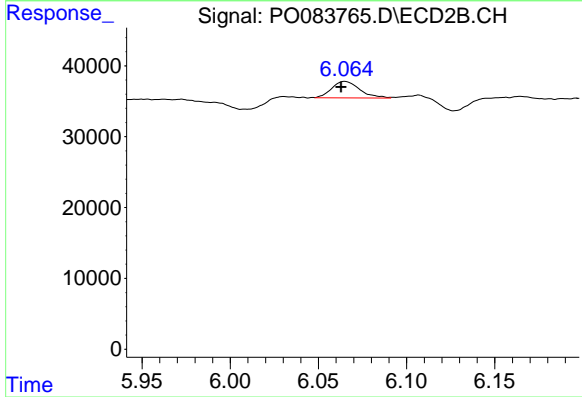
#2 Decachlorobiphenyl
 R.T.: 9.238 min
 Delta R.T.: 0.007 min
 Response: 33290
 Conc: 1.19 ng/ml m



#26 AR-1254-1

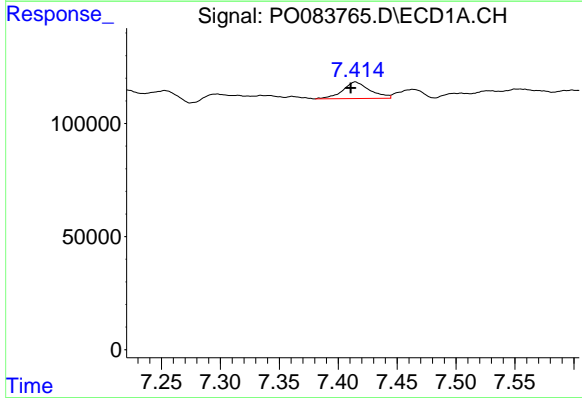
R.T.: 7.185 min
 Delta R.T.: 0.005 min
 Response: 61371
 Conc: 19.92 ng/ml

Instrument :
 ECD_O
 ClientSampleId :
 CLI-2021-9-B



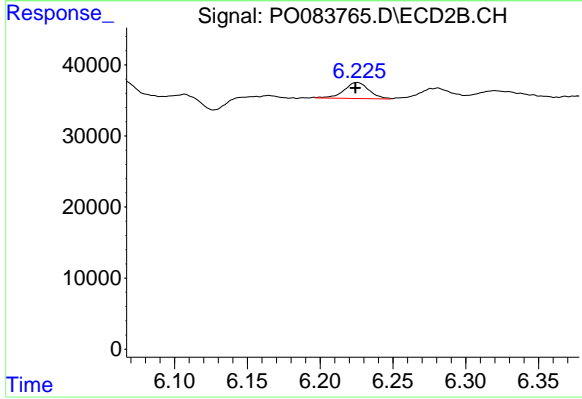
#26 AR-1254-1

R.T.: 6.064 min
 Delta R.T.: 0.002 min
 Response: 25717
 Conc: 14.01 ng/ml m



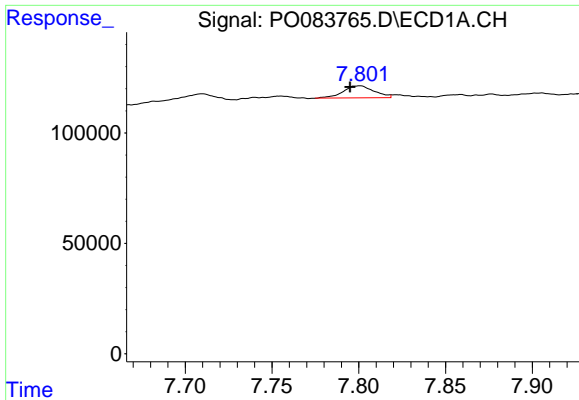
#27 AR-1254-2

R.T.: 7.415 min
 Delta R.T.: 0.004 min
 Response: 118227
 Conc: 25.48 ng/ml



#27 AR-1254-2

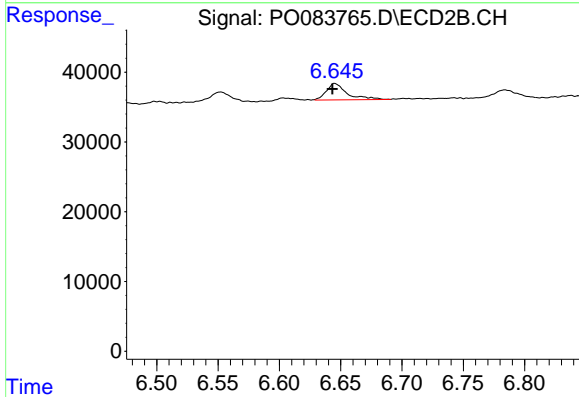
R.T.: 6.225 min
 Delta R.T.: 0.001 min
 Response: 27021
 Conc: 17.01 ng/ml m



#28 AR-1254-3

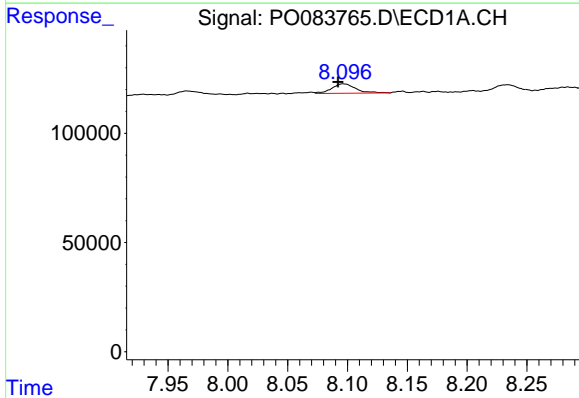
R.T.: 7.801 min
 Delta R.T.: 0.006 min
 Response: 67748
 Conc: 14.53 ng/ml

Instrument :
 ECD_O
 ClientSampleId :
 CLI-2021-9-B



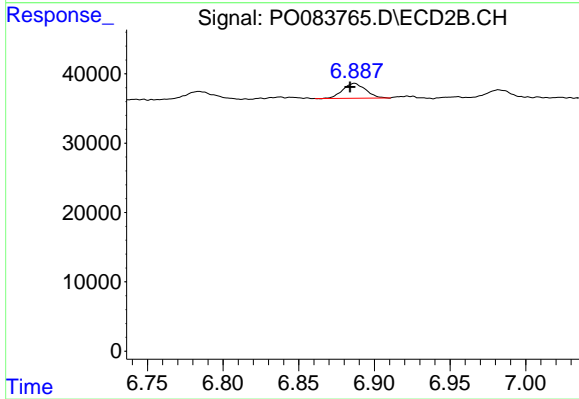
#28 AR-1254-3

R.T.: 6.645 min
 Delta R.T.: 0.002 min
 Response: 27519
 Conc: 11.49 ng/ml



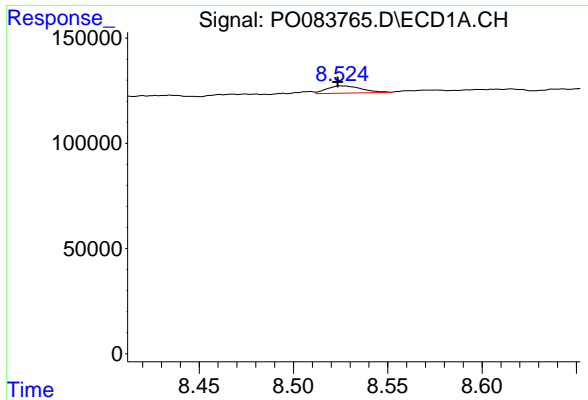
#29 AR-1254-4

R.T.: 8.096 min
 Delta R.T.: 0.004 min
 Response: 60742
 Conc: 17.77 ng/ml



#29 AR-1254-4

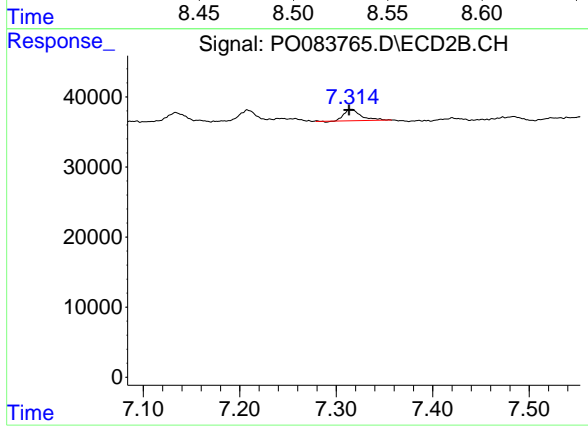
R.T.: 6.887 min
 Delta R.T.: 0.003 min
 Response: 22888
 Conc: 13.62 ng/ml



#30 AR-1254-5

R.T.: 8.525 min
 Delta R.T.: 0.001 min
 Response: 44203
 Conc: 12.40 ng/ml

Instrument :
 ECD_O
 ClientSampleId :
 CLI-2021-9-B



#30 AR-1254-5

R.T.: 7.315 min
 Delta R.T.: 0.002 min
 Response: 19776
 Conc: 9.31 ng/ml