

Data Path : Z:\pestpcbsrv\HPCHEM1\ECD\_0\Data\PO121621\  
 Data File : PO083785.D  
 Signal(s) : Signal #1: ECD1A.CH Signal #2: ECD2B.CH  
 Acq On : 17 Dec 2021 00:36  
 Operator : AJ\MA  
 Sample : M5070-18 10X  
 Misc :  
 ALS Vial : 42 Sample Multiplier: 1

**Instrument :**  
 ECD\_0  
**ClientSampleId :**  
 CLI-2021-17-A

Integration File signal 1: autoint1.e  
 Integration File signal 2: autoint2.e  
 Quant Time: Dec 17 06:04:01 2021  
 Quant Method : Z:\pestpcbsrv\HPCHEM1\ECD\_0\methods\PO121521.M  
 Quant Title : GC EXTRACTABLES  
 QLast Update : Thu Dec 16 04:05:27 2021  
 Response via : Initial Calibration  
 Integrator: ChemStation 6890 Scale Mode: Small noise peaks clipped

Volume Inj. : 2 µl  
 Signal #1 Phase : ZB-MR1 Signal #2 Phase: ZB-MR2  
 Signal #1 Info : 30Mx0.32mmx 0.50µ Signal #2 Info : 30M x 0.32mm x 0.25µm

Compound	RT#1	RT#2	Resp#1	Resp#2	ng/ml	ng/ml
-----						
System Monitoring Compounds						
1) SA Tetrachlo...	4.936	3.942	118373	44941	1.243	1.532m
2) SA Decachlor...	11.015	9.238	132195	51804	1.930	1.845

Target Compounds

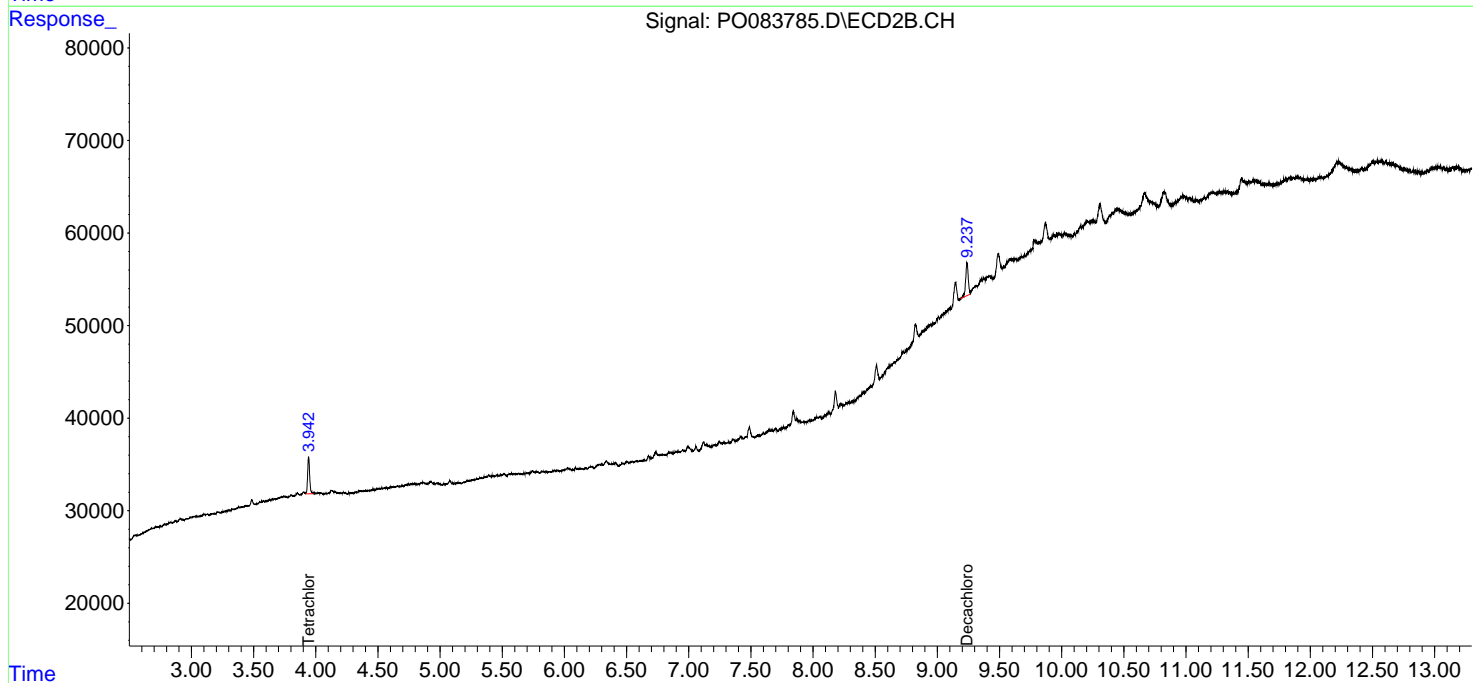
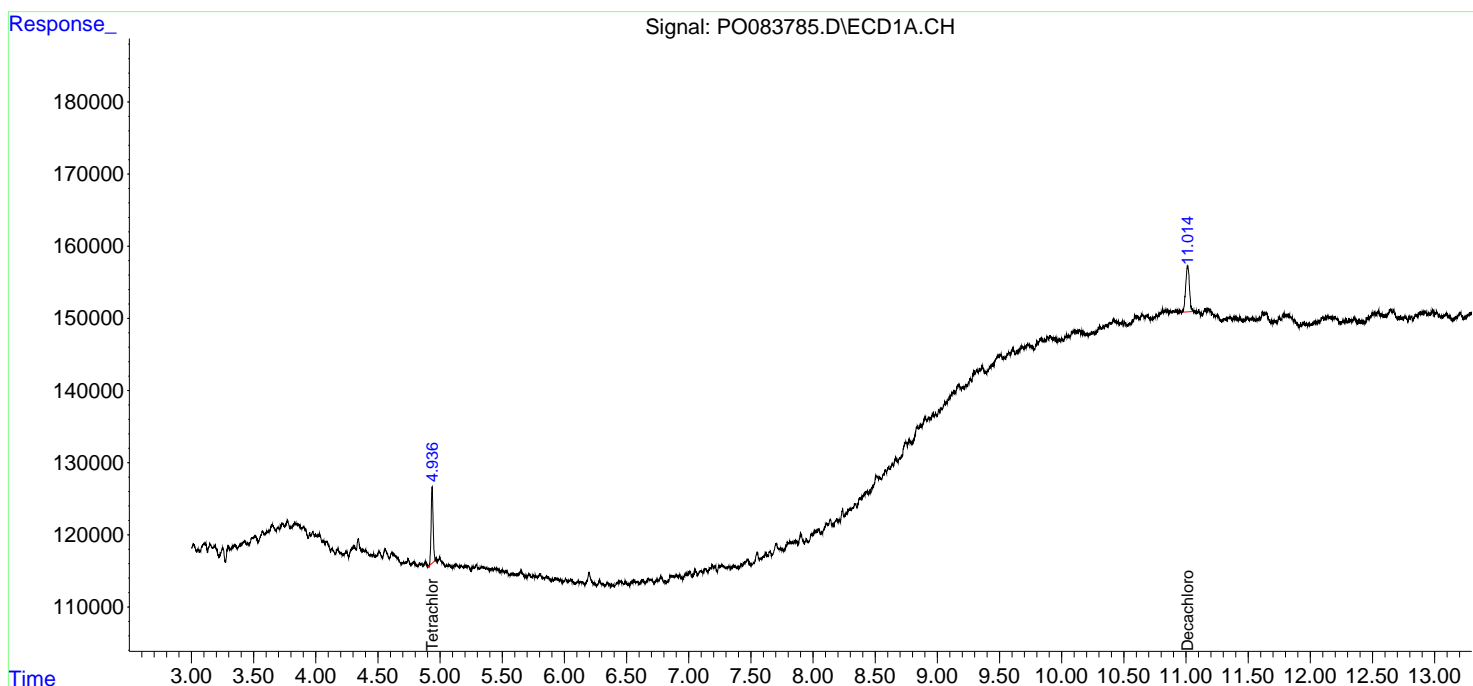
-----  
 (f)=RT Delta > 1/2 Window (#)=Amounts differ by > 25% (m)=manual int.

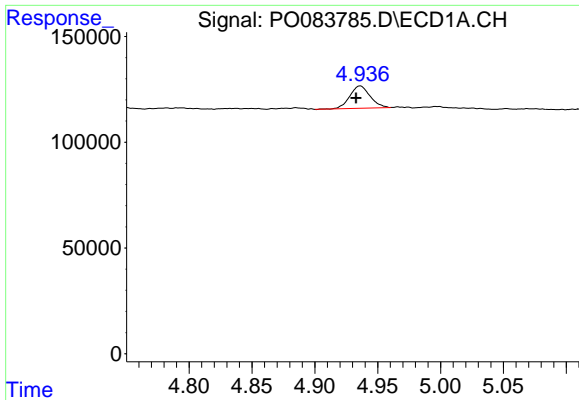
Data Path : Z:\pestpcbsrv\HPCHEM1\ECD\_O\Data\PO121621\  
 Data File : PO083785.D  
 Signal(s) : Signal #1: ECD1A.CH Signal #2: ECD2B.CH  
 Acq On : 17 Dec 2021 00:36  
 Operator : AJ\MA  
 Sample : M5070-18 10X  
 Misc :  
 ALS Vial : 42 Sample Multiplier: 1

Instrument :  
 ECD\_O  
 ClientSampleId :  
 CLI-2021-17-A

Integration File signal 1: autoint1.e  
 Integration File signal 2: autoint2.e  
 Quant Time: Dec 17 06:04:01 2021  
 Quant Method : Z:\pestpcbsrv\HPCHEM1\ECD\_O\methods\PO121521.M  
 Quant Title : GC EXTRACTABLES  
 QLast Update : Thu Dec 16 04:05:27 2021  
 Response via : Initial Calibration  
 Integrator: ChemStation 6890 Scale Mode: Small noise peaks clipped

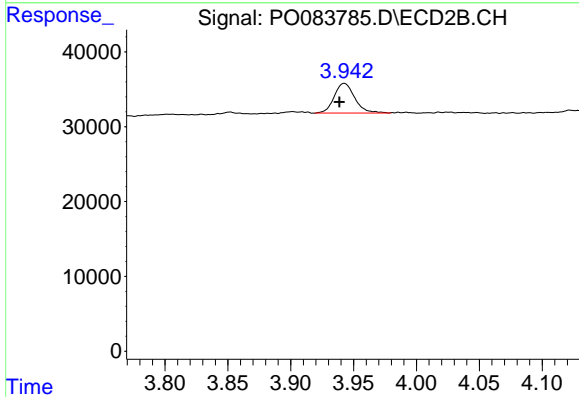
Volume Inj. : 2 µl  
 Signal #1 Phase : ZB-MR1 Signal #2 Phase: ZB-MR2  
 Signal #1 Info : 30Mx0.32mmx 0.50µ Signal #2 Info : 30M x 0.32mm x 0.25µm



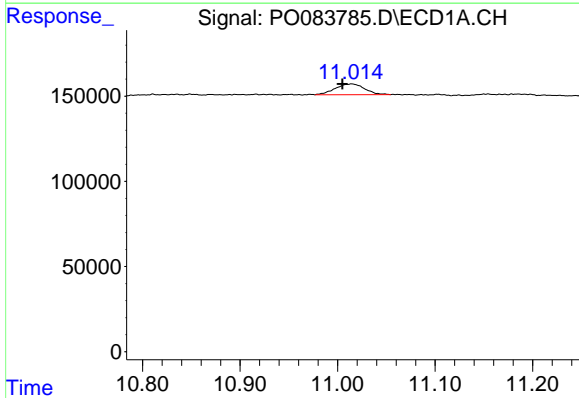


#1 Tetrachloro-m-xylene  
 R.T.: 4.936 min  
 Delta R.T.: 0.003 min  
 Response: 118373  
 Conc: 1.24 ng/ml

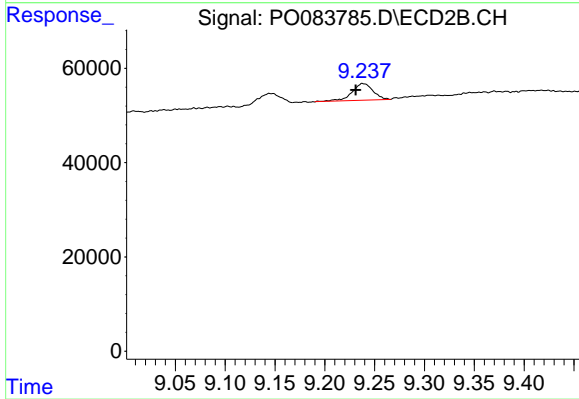
Instrument :  
 ECD\_O  
 ClientSampleId :  
 CLI-2021-17-A



#1 Tetrachloro-m-xylene  
 R.T.: 3.942 min  
 Delta R.T.: 0.004 min  
 Response: 44941  
 Conc: 1.53 ng/ml m



#2 Decachlorobiphenyl  
 R.T.: 11.015 min  
 Delta R.T.: 0.010 min  
 Response: 132195  
 Conc: 1.93 ng/ml



#2 Decachlorobiphenyl  
 R.T.: 9.238 min  
 Delta R.T.: 0.007 min  
 Response: 51804  
 Conc: 1.84 ng/ml