

Data Path : Z:\pestpcbsrv\HPCHEM1\ECD_0\Data\PO121622\
 Data File : PO091437.D
 Signal(s) : Signal #1: ECD1A.ch Signal #2: ECD2B.ch
 Acq On : 16 Dec 2022 12:42
 Operator : YP/AJ
 Sample : AR1660CCC500
 Misc :
 ALS Vial : 3 Sample Multiplier: 1

Instrument :
 ECD_0
 ClientSampleId :

Integration File signal 1: autoint1.e
 Integration File signal 2: autoint2.e
 Quant Time: Dec 16 20:43:34 2022
 Quant Method : Z:\pestpcbsrv\HPCHEM1\ECD_0\methods\PO112522.M
 Quant Title : GC EXTRACTABLES
 QLast Update : Mon Nov 28 11:25:59 2022
 Response via : Initial Calibration
 Integrator: ChemStation

Volume Inj. : 2 µl
 Signal #1 Phase : ZB-MR1 Signal #2 Phase: ZB-MR2
 Signal #1 Info : 30Mx0.32mmx 0.50µ Signal #2 Info : 30M x 0.32mm x 0.25µm

Compound	RT#1	RT#2	Resp#1	Resp#2	ng/ml	ng/ml
System Monitoring Compounds						
1) SA Tetrachlo...	4.296	3.473	159.6E6	52416134	47.215	49.941
2) SA Decachlor...	10.048	8.476	109.5E6	46437574	41.219	47.831
Target Compounds						
3) L1 AR-1016-1	5.473	4.558	51642259	18480440	458.908	501.477
4) L1 AR-1016-2	5.496	4.576	73977596	26317626	455.027	510.732
5) L1 AR-1016-3	5.558	4.752	46195105	14395202	443.077	528.935
6) L1 AR-1016-4	5.656	4.795	37128947	12225199	458.198	528.875
7) L1 AR-1016-5	5.953	5.009	36517736	15208090	416.420	515.587
8) L2 AR-1221-1	4.502	3.685	5645514	1993939	138.192	151.281
9) L2 AR-1221-2	4.594	3.772	8191136	2926598	270.053	294.344
10) L2 AR-1221-3	4.670	3.848	29600998	10955335	321.748	352.743
11) L3 AR-1232-1	4.670	3.848	29600998	10955335	411.404	458.516
12) L3 AR-1232-2	5.203	4.576	40623374	26317626	937.681	1089.708
13) L3 AR-1232-3	5.496	4.752	73977596	14395202	990.052	1137.099
14) L3 AR-1232-4	5.656	4.837	37128947	14962712	990.730	1237.854
15) L3 AR-1232-5	5.750	5.009	31584294	15208090	1056.203	1124.428
16) L4 AR-1242-1	5.473	4.558	51642259	18480440	578.577	636.453
17) L4 AR-1242-2	5.496	4.576	73977596	26317626	582.644	652.878
18) L4 AR-1242-3	5.558	4.752	46195105	14395202	554.161	688.347
19) L4 AR-1242-4	5.656	4.837	37128947	14962712	584.470	655.277
20) L4 AR-1242-5	6.399	5.362	5121983	12344799	74.958	437.524 #
21) L5 AR-1248-1	5.473	4.558	51642259	18480440	724.975	785.539
22) L5 AR-1248-2	5.750	4.795	31584294	12225199	297.939	373.403 #
23) L5 AR-1248-3	5.953	4.837	36517736	14962712	310.310	440.860 #
24) L5 AR-1248-4	6.359	5.009	5271489	15208090	43.107	381.133 #
25) L5 AR-1248-5	6.399	5.402	5121983	1885315	44.657	52.596
26) L6 AR-1254-1	6.334	5.362	28090445	12344799	223.666	210.638
27) L6 AR-1254-2	6.555	5.511	29279078	11805809	155.279	221.206 #
28) L6 AR-1254-3	6.923	5.931	15299633	20342515	81.625	249.688 #
29) L6 AR-1254-4	7.210	6.145	10199213	2030447	73.833	41.499 #
30) L6 AR-1254-5	7.632	6.565	87339369	38412201	569.251	515.292
31) L7 AR-1260-1	7.089	6.047	64092497	28366750	417.794	489.908
32) L7 AR-1260-2	7.349	6.237	73703869	33538459	422.268	491.147
33) L7 AR-1260-3	7.710	6.389	48800997	31615557	429.307	481.995
34) L7 AR-1260-4	7.936	6.863	59234916	23346771	437.130	488.835
35) L7 AR-1260-5	8.253	7.108	103.7E6	53050142	408.339	487.986
36) L8 AR-1262-1	7.710	6.604	48800997	24601496	267.095	327.310
37) L8 AR-1262-2	8.253	7.108	103.7E6	53050142	335.295	416.735
38) L8 AR-1262-3	8.574	7.393	67973625	10732604	315.271	203.664 #
39) L8 AR-1262-4	8.650	7.456	15668195	38593644	157.405	406.350 #
40) L8 AR-1262-5	9.301	7.953	26703568	12552393	231.339	275.224
41) L9 AR-1268-1	8.574	7.393	67973625	10732604	184.592	71.951 #

Data Path : Z:\pestpcbsrv\HPCHEM1\ECD_0\Data\PO121622\
 Data File : PO091437.D
 Signal(s) : Signal #1: ECD1A.ch Signal #2: ECD2B.ch
 Acq On : 16 Dec 2022 12:42
 Operator : YP/AJ
 Sample : AR1660CCC500
 Misc :
 ALS Vial : 3 Sample Multiplier: 1

Instrument :
 ECD_0
 ClientSampleId :

Integration File signal 1: autoint1.e
 Integration File signal 2: autoint2.e
 Quant Time: Dec 16 20:43:34 2022
 Quant Method : Z:\pestpcbsrv\HPCHEM1\ECD_0\methods\PO112522.M
 Quant Title : GC EXTRACTABLES
 QLast Update : Mon Nov 28 11:25:59 2022
 Response via : Initial Calibration
 Integrator: ChemStation

Volume Inj. : 2 µl
 Signal #1 Phase : ZB-MR1 Signal #2 Phase: ZB-MR2
 Signal #1 Info : 30Mx0.32mmx 0.50µ Signal #2 Info : 30M x 0.32mm x 0.25µm

	Compound	RT#1	RT#2	Resp#1	Resp#2	ng/ml	ng/ml
42)	L9 AR-1268-2	8.650	7.456	15668195	38593644	47.119	287.216 #
43)	L9 AR-1268-3	8.879	7.664	1783571	904121	6.260	7.833 #
44)	L9 AR-1268-4	9.301	7.953	26703568	12552393	216.323	254.438
45)	L9 AR-1268-5	9.711	8.232	8675701	3934575	9.534	11.621

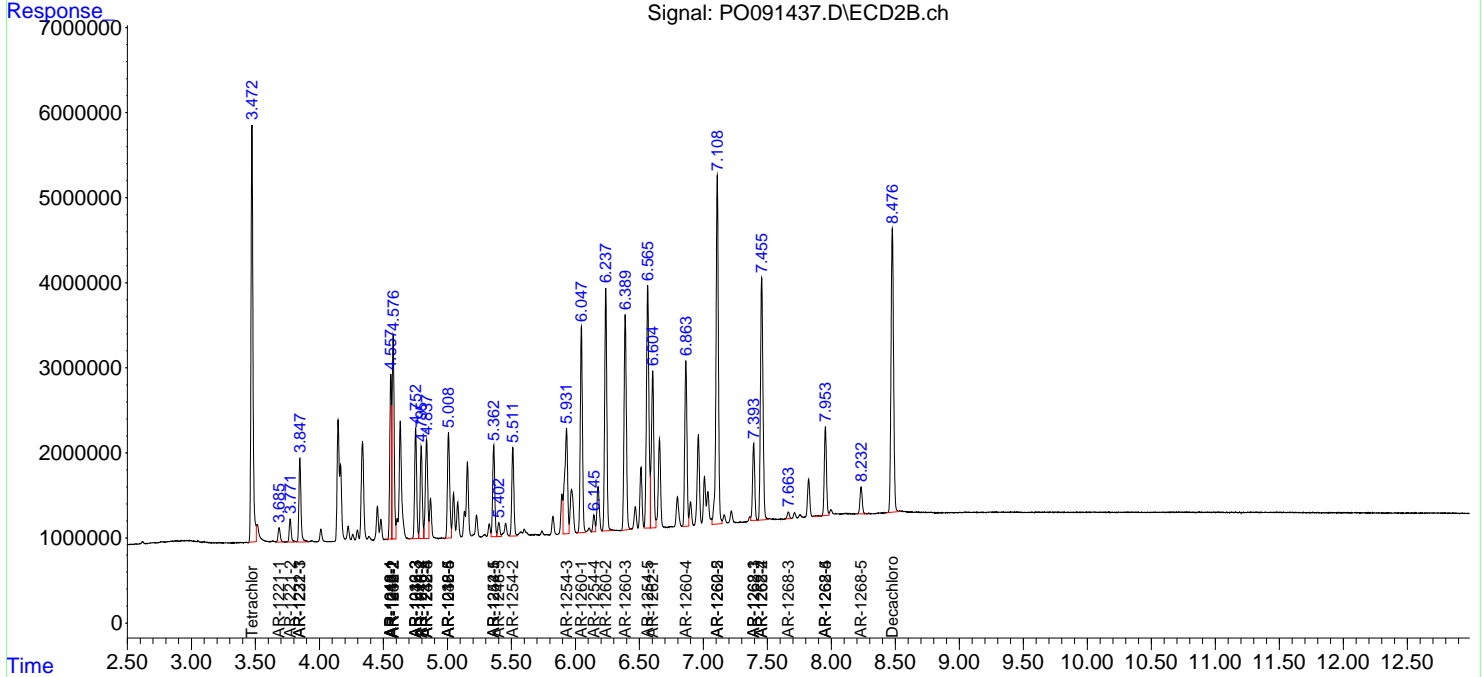
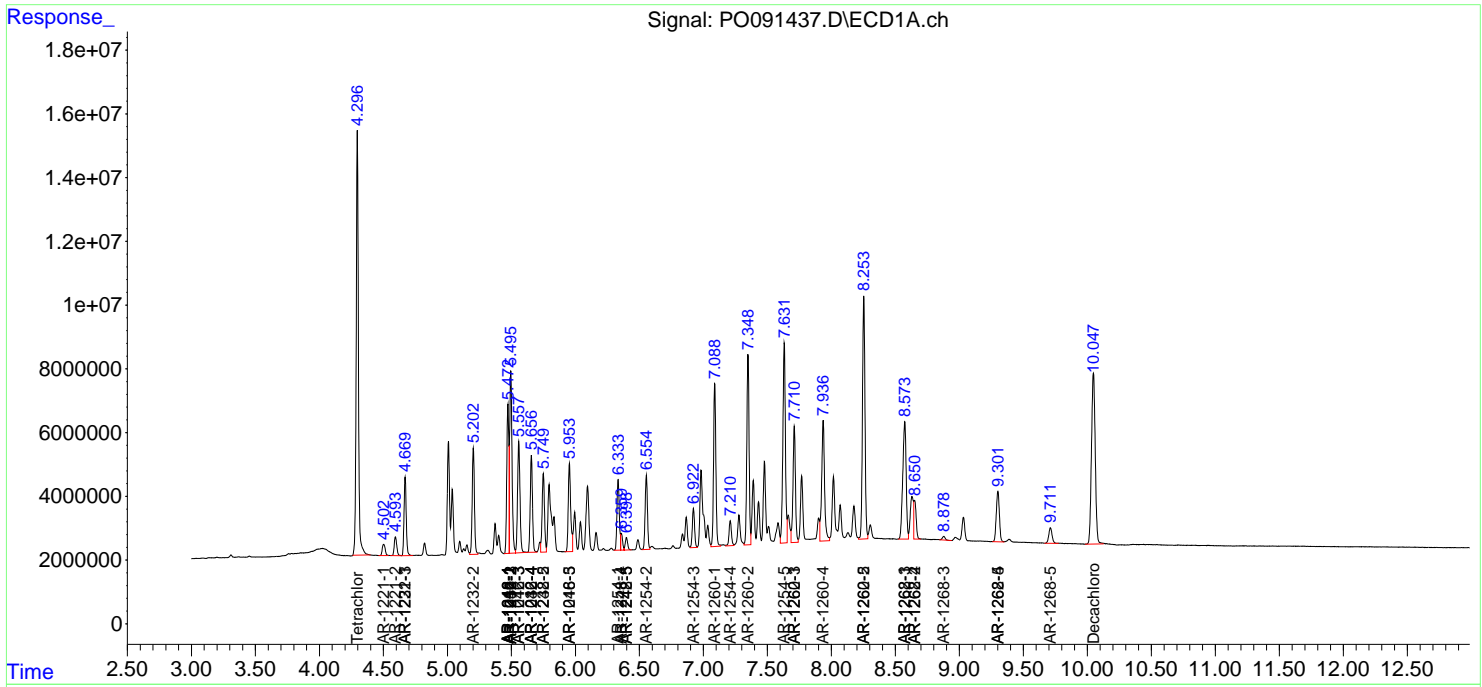
(f)=RT Delta > 1/2 Window (#)=Amounts differ by > 25% (m)=manual int.

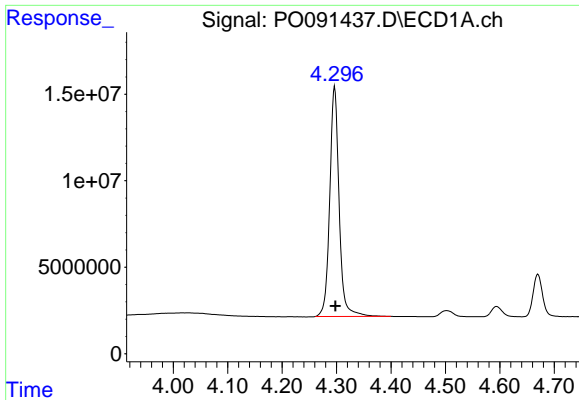
Data Path : Z:\pestpcbsrv\HPCHEM1\ECD_O\Data\PO121622\
 Data File : PO091437.D
 Signal(s) : Signal #1: ECD1A.ch Signal #2: ECD2B.ch
 Acq On : 16 Dec 2022 12:42
 Operator : YP/AJ
 Sample : AR1660CCC500
 Misc :
 ALS Vial : 3 Sample Multiplier: 1

Instrument :
 ECD_O
 ClientSampleId :

Integration File signal 1: autoint1.e
 Integration File signal 2: autoint2.e
 Quant Time: Dec 16 20:43:34 2022
 Quant Method : Z:\pestpcbsrv\HPCHEM1\ECD_O\methods\PO112522.M
 Quant Title : GC EXTRACTABLES
 QLast Update : Mon Nov 28 11:25:59 2022
 Response via : Initial Calibration
 Integrator: ChemStation

Volume Inj. : 2 µl
 Signal #1 Phase : ZB-MR1 Signal #2 Phase: ZB-MR2
 Signal #1 Info : 30Mx0.32mmx 0.50µ Signal #2 Info : 30M x 0.32mm x 0.25µm

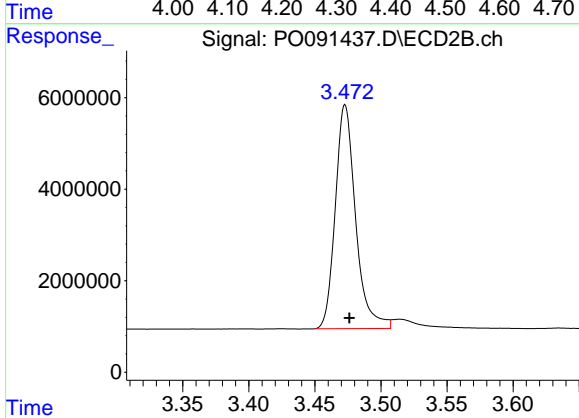




#1 Tetrachloro-m-xylene

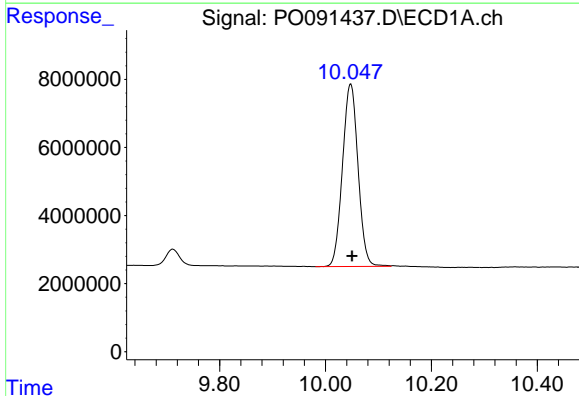
R.T.: 4.296 min
 Delta R.T.: -0.002 min
 Response: 159639630
 Conc: 47.22 ng/ml

Instrument :
 ECD_O
 ClientSampleId :



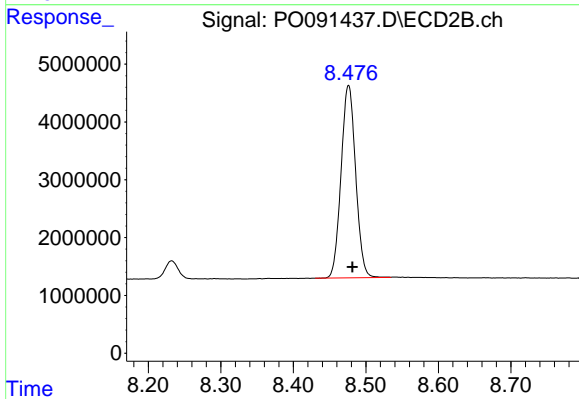
#1 Tetrachloro-m-xylene

R.T.: 3.473 min
 Delta R.T.: -0.003 min
 Response: 52416134
 Conc: 49.94 ng/ml



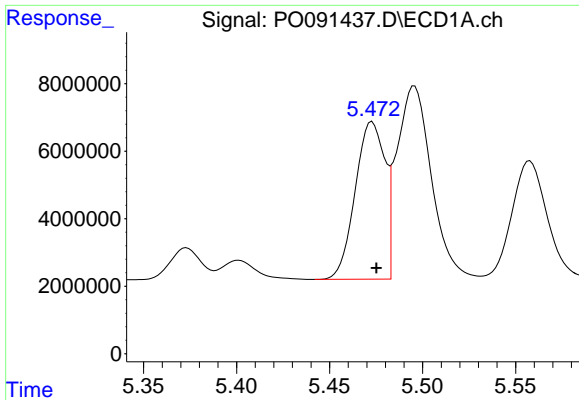
#2 Decachlorobiphenyl

R.T.: 10.048 min
 Delta R.T.: -0.002 min
 Response: 109485997
 Conc: 41.22 ng/ml



#2 Decachlorobiphenyl

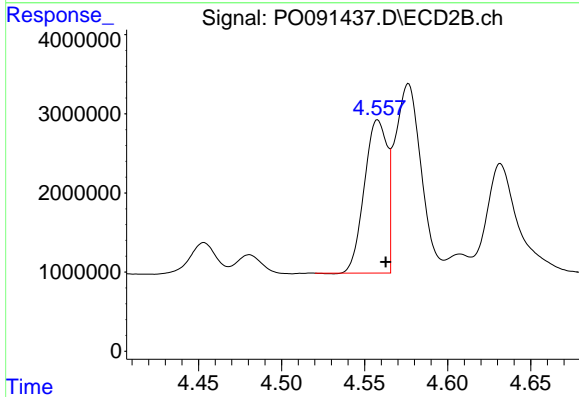
R.T.: 8.476 min
 Delta R.T.: -0.006 min
 Response: 46437574
 Conc: 47.83 ng/ml



#3 AR-1016-1

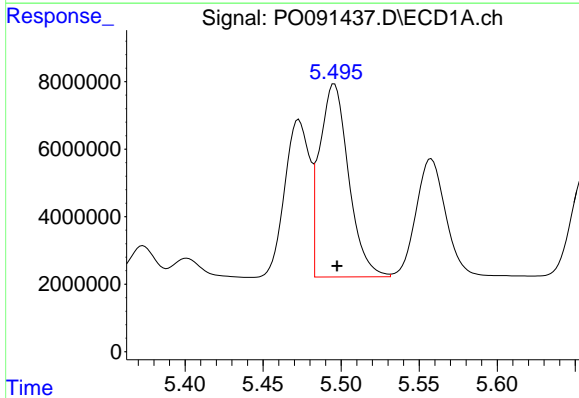
R.T.: 5.473 min
 Delta R.T.: -0.002 min
 Response: 51642259
 Conc: 458.91 ng/ml

Instrument :
 ECD_O
 ClientSampleId :



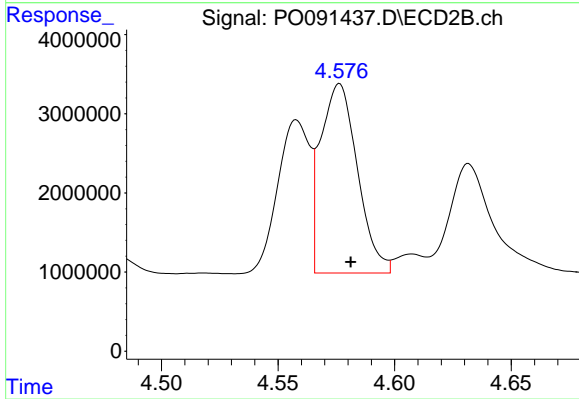
#3 AR-1016-1

R.T.: 4.558 min
 Delta R.T.: -0.005 min
 Response: 18480440
 Conc: 501.48 ng/ml



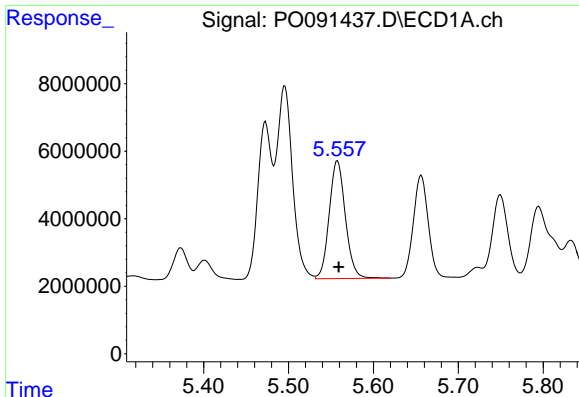
#4 AR-1016-2

R.T.: 5.496 min
 Delta R.T.: -0.002 min
 Response: 73977596
 Conc: 455.03 ng/ml



#4 AR-1016-2

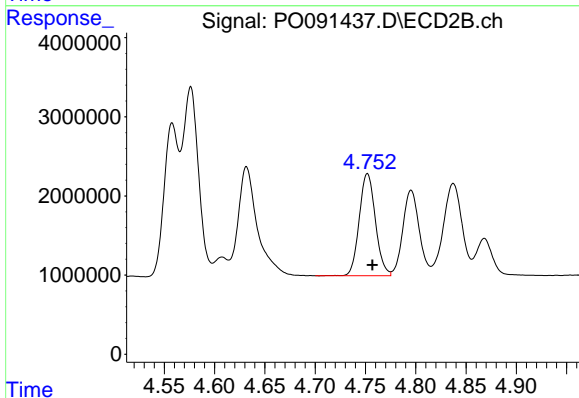
R.T.: 4.576 min
 Delta R.T.: -0.005 min
 Response: 26317626
 Conc: 510.73 ng/ml



#5 AR-1016-3

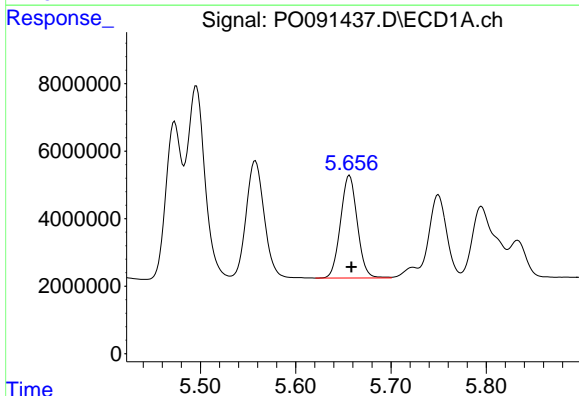
R.T.: 5.558 min
 Delta R.T.: -0.002 min
 Response: 46195105
 Conc: 443.08 ng/ml

Instrument :
 ECD_O
 ClientSampleId :



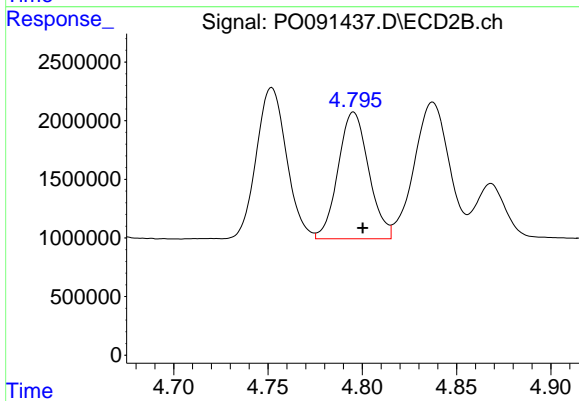
#5 AR-1016-3

R.T.: 4.752 min
 Delta R.T.: -0.005 min
 Response: 14395202
 Conc: 528.94 ng/ml



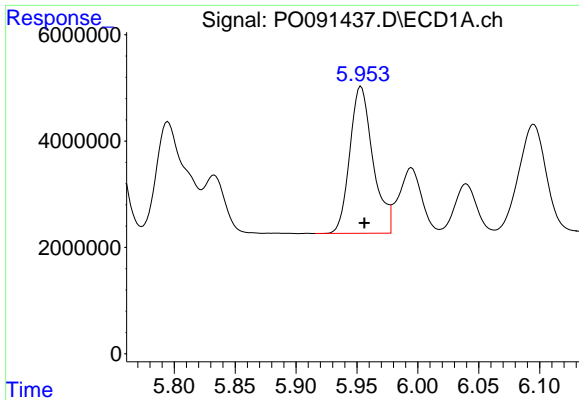
#6 AR-1016-4

R.T.: 5.656 min
 Delta R.T.: -0.002 min
 Response: 37128947
 Conc: 458.20 ng/ml



#6 AR-1016-4

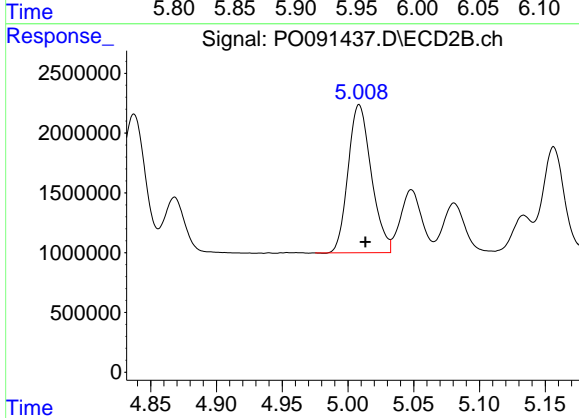
R.T.: 4.795 min
 Delta R.T.: -0.005 min
 Response: 12225199
 Conc: 528.87 ng/ml



#7 AR-1016-5

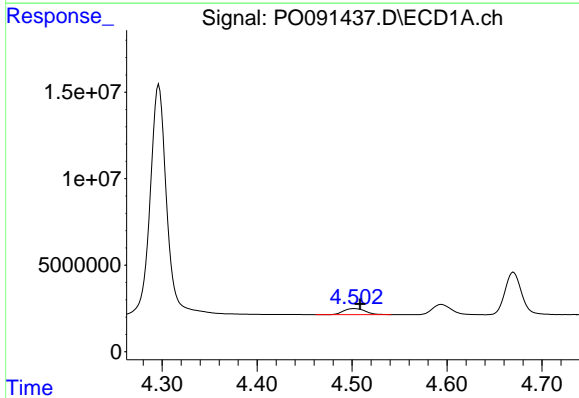
R.T.: 5.953 min
 Delta R.T.: -0.003 min
 Response: 36517736
 Conc: 416.42 ng/ml

Instrument :
 ECD_O
 ClientSampleId :



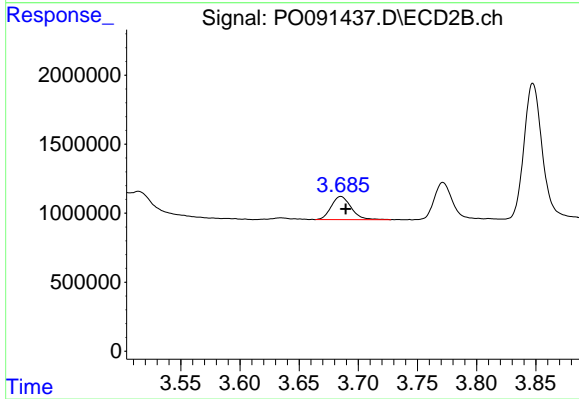
#7 AR-1016-5

R.T.: 5.009 min
 Delta R.T.: -0.005 min
 Response: 15208090
 Conc: 515.59 ng/ml



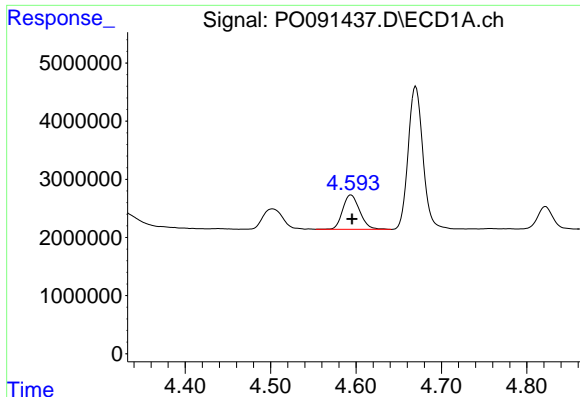
#8 AR-1221-1

R.T.: 4.502 min
 Delta R.T.: -0.006 min
 Response: 5645514
 Conc: 138.19 ng/ml



#8 AR-1221-1

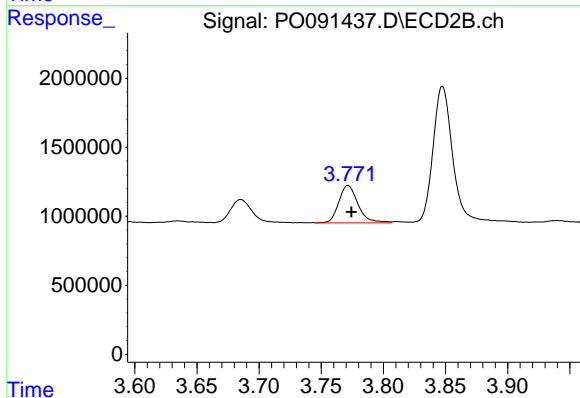
R.T.: 3.685 min
 Delta R.T.: -0.004 min
 Response: 1993939
 Conc: 151.28 ng/ml



#9 AR-1221-2

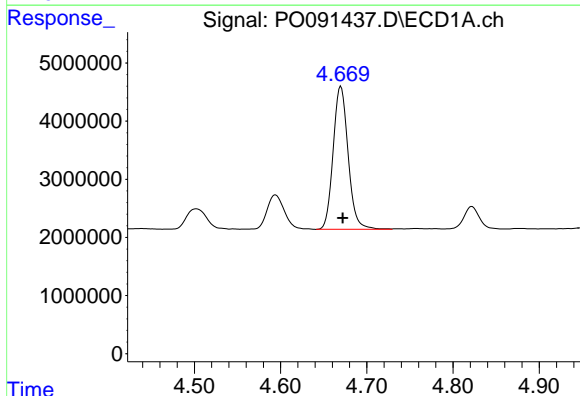
R.T.: 4.594 min
 Delta R.T.: -0.001 min
 Response: 8191136
 Conc: 270.05 ng/ml

Instrument :
 ECD_O
 ClientSampleId :



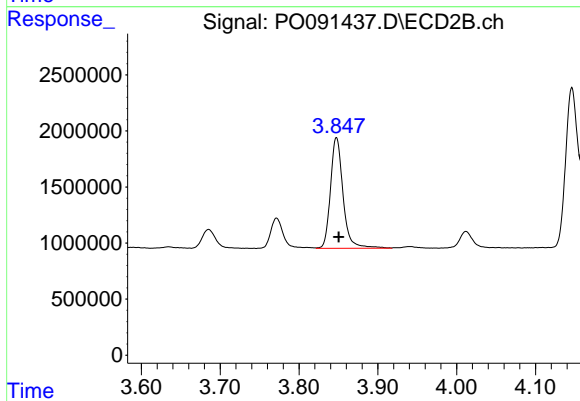
#9 AR-1221-2

R.T.: 3.772 min
 Delta R.T.: -0.003 min
 Response: 2926598
 Conc: 294.34 ng/ml



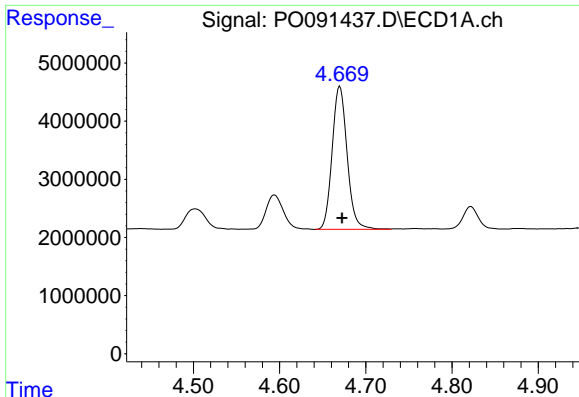
#10 AR-1221-3

R.T.: 4.670 min
 Delta R.T.: -0.002 min
 Response: 29600998
 Conc: 321.75 ng/ml



#10 AR-1221-3

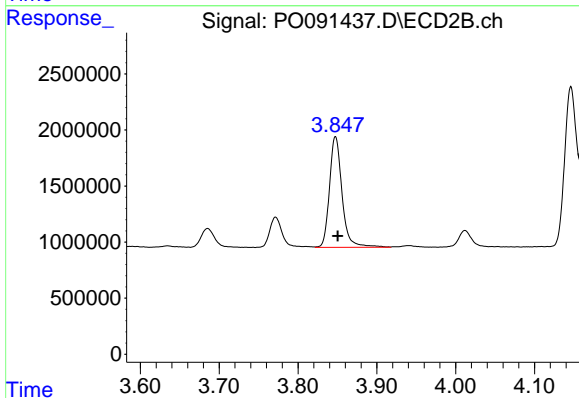
R.T.: 3.848 min
 Delta R.T.: -0.003 min
 Response: 10955335
 Conc: 352.74 ng/ml



#11 AR-1232-1

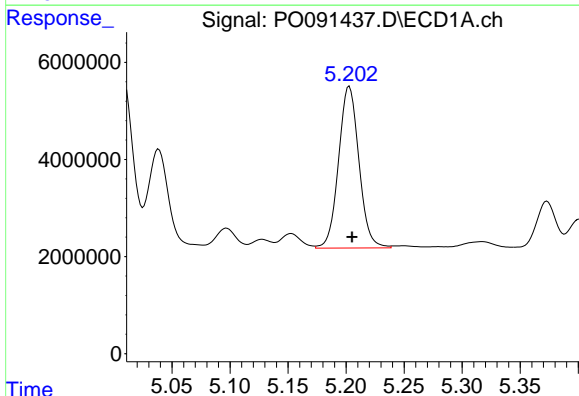
R.T.: 4.670 min
 Delta R.T.: -0.002 min
 Response: 29600998
 Conc: 411.40 ng/ml

Instrument :
 ECD_O
 ClientSampleId :



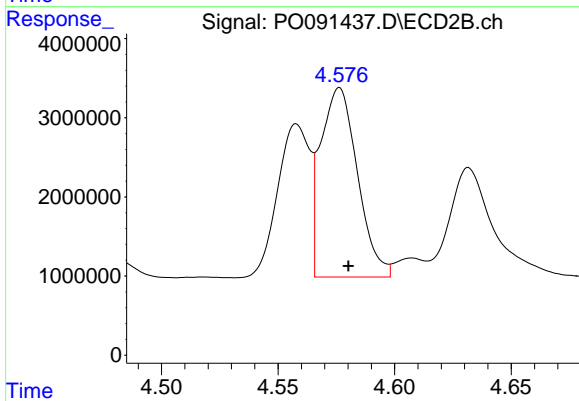
#11 AR-1232-1

R.T.: 3.848 min
 Delta R.T.: -0.003 min
 Response: 10955335
 Conc: 458.52 ng/ml



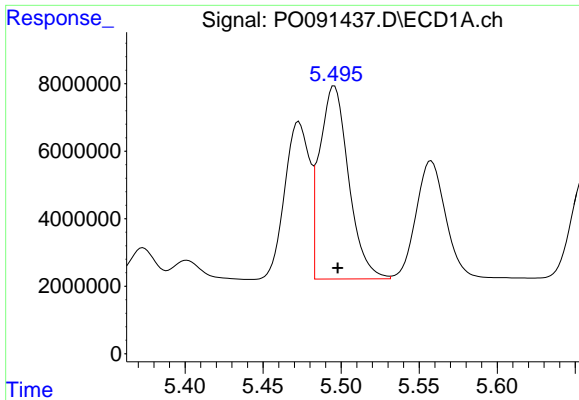
#12 AR-1232-2

R.T.: 5.203 min
 Delta R.T.: -0.002 min
 Response: 40623374
 Conc: 937.68 ng/ml



#12 AR-1232-2

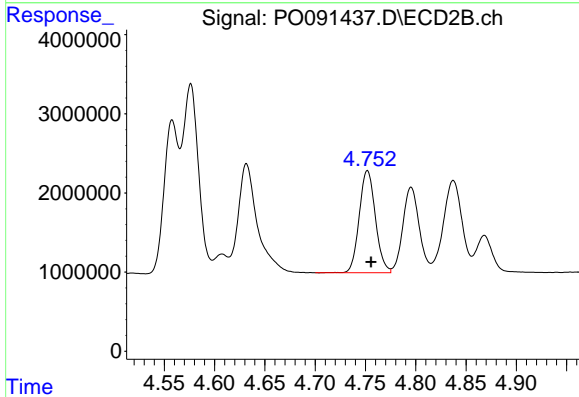
R.T.: 4.576 min
 Delta R.T.: -0.004 min
 Response: 26317626
 Conc: 1089.71 ng/ml



#13 AR-1232-3

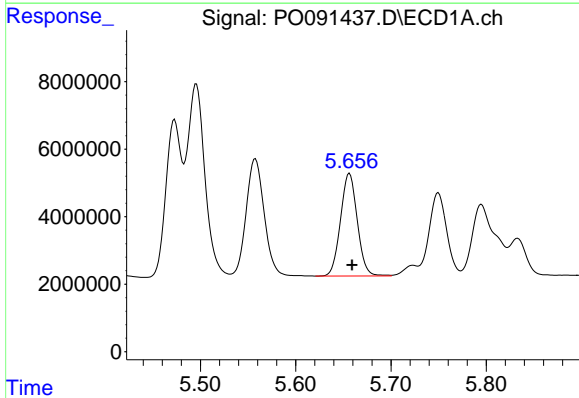
R.T.: 5.496 min
 Delta R.T.: -0.002 min
 Response: 73977596
 Conc: 990.05 ng/ml

Instrument :
 ECD_O
 ClientSampleId :



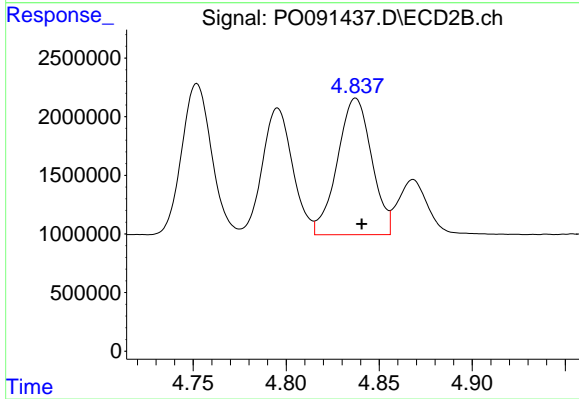
#13 AR-1232-3

R.T.: 4.752 min
 Delta R.T.: -0.004 min
 Response: 14395202
 Conc: 1137.10 ng/ml



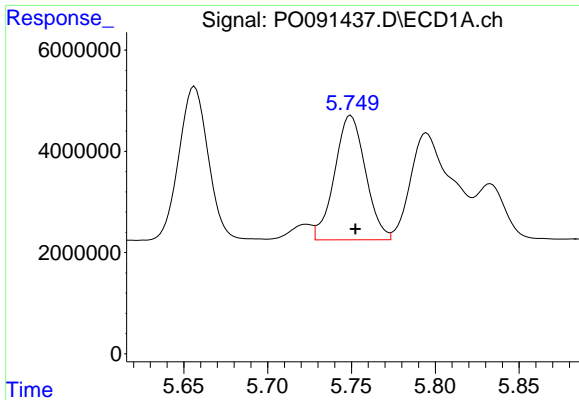
#14 AR-1232-4

R.T.: 5.656 min
 Delta R.T.: -0.003 min
 Response: 37128947
 Conc: 990.73 ng/ml



#14 AR-1232-4

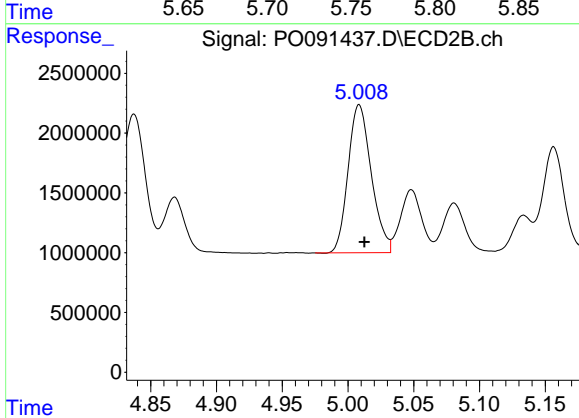
R.T.: 4.837 min
 Delta R.T.: -0.003 min
 Response: 14962712
 Conc: 1237.85 ng/ml



#15 AR-1232-5

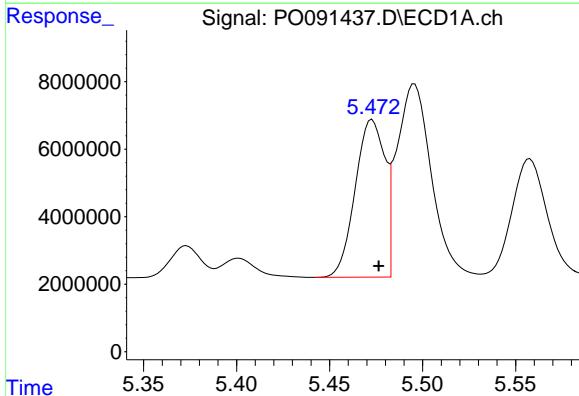
R.T.: 5.750 min
 Delta R.T.: -0.003 min
 Response: 31584294
 Conc: 1056.20 ng/ml

Instrument :
 ECD_O
 ClientSampleId :



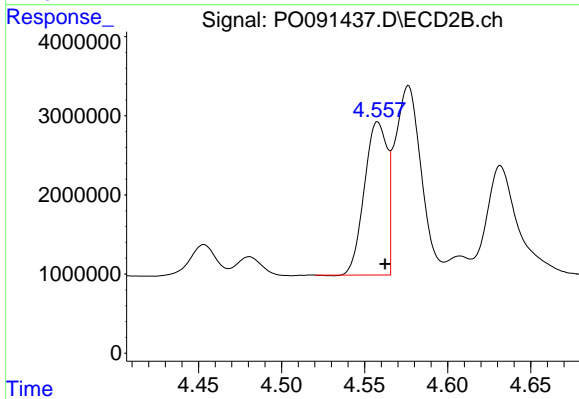
#15 AR-1232-5

R.T.: 5.009 min
 Delta R.T.: -0.004 min
 Response: 15208090
 Conc: 1124.43 ng/ml



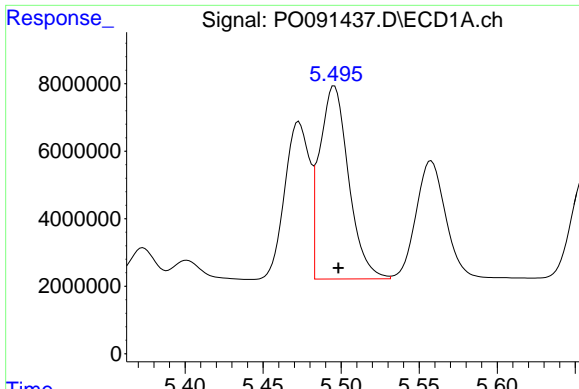
#16 AR-1242-1

R.T.: 5.473 min
 Delta R.T.: -0.003 min
 Response: 51642259
 Conc: 578.58 ng/ml



#16 AR-1242-1

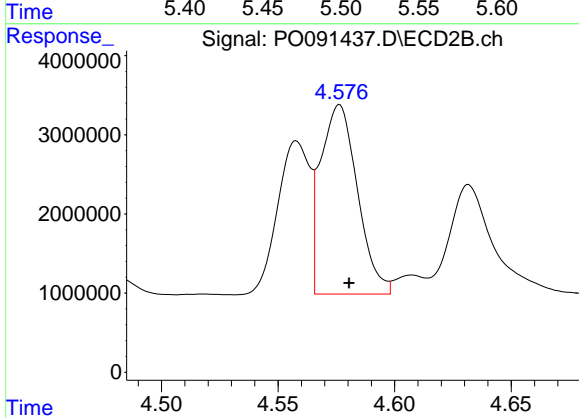
R.T.: 4.558 min
 Delta R.T.: -0.005 min
 Response: 18480440
 Conc: 636.45 ng/ml



#17 AR-1242-2

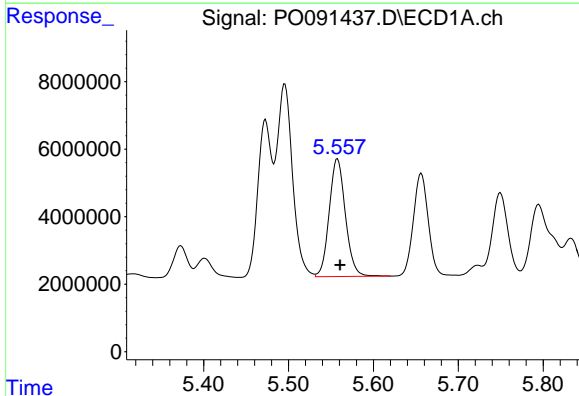
R.T.: 5.496 min
 Delta R.T.: -0.003 min
 Response: 73977596
 Conc: 582.64 ng/ml

Instrument :
 ECD_O
 ClientSampleId :



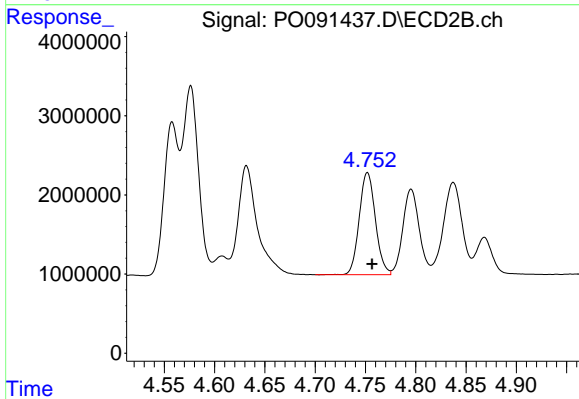
#17 AR-1242-2

R.T.: 4.576 min
 Delta R.T.: -0.004 min
 Response: 26317626
 Conc: 652.88 ng/ml



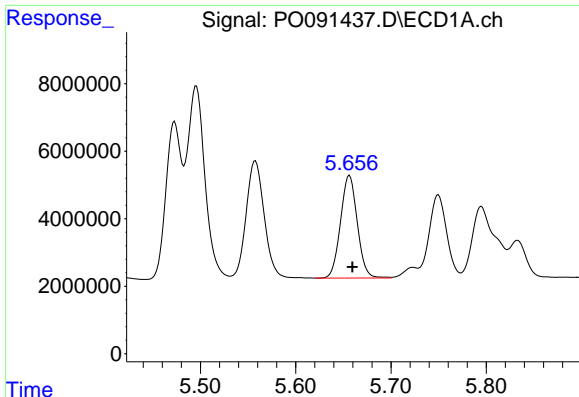
#18 AR-1242-3

R.T.: 5.558 min
 Delta R.T.: -0.003 min
 Response: 46195105
 Conc: 554.16 ng/ml



#18 AR-1242-3

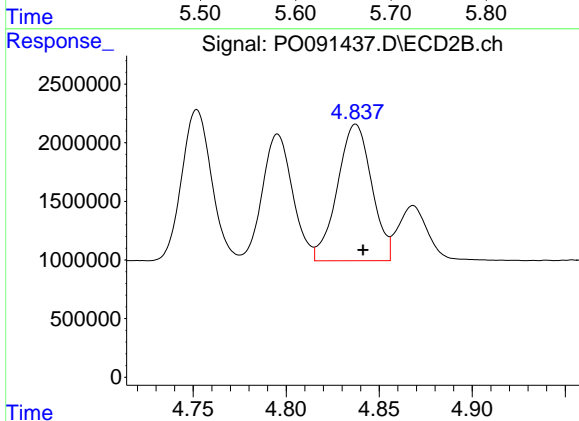
R.T.: 4.752 min
 Delta R.T.: -0.004 min
 Response: 14395202
 Conc: 688.35 ng/ml



#19 AR-1242-4

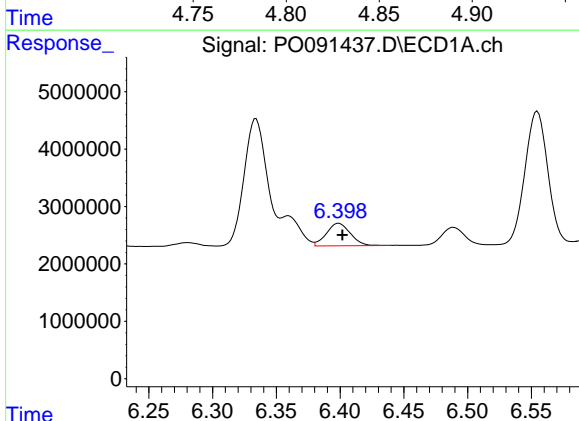
R.T.: 5.656 min
Delta R.T.: -0.003 min
Response: 37128947
Conc: 584.47 ng/ml

Instrument :
ECD_O
ClientSampleId :



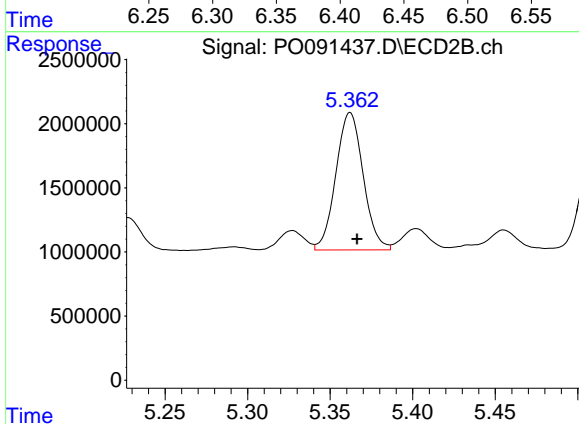
#19 AR-1242-4

R.T.: 4.837 min
Delta R.T.: -0.004 min
Response: 14962712
Conc: 655.28 ng/ml



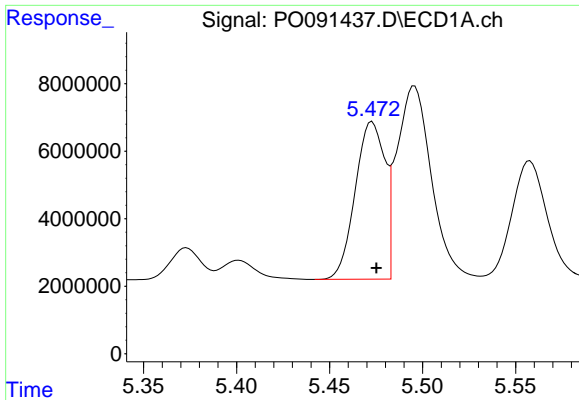
#20 AR-1242-5

R.T.: 6.399 min
Delta R.T.: -0.003 min
Response: 5121983
Conc: 74.96 ng/ml



#20 AR-1242-5

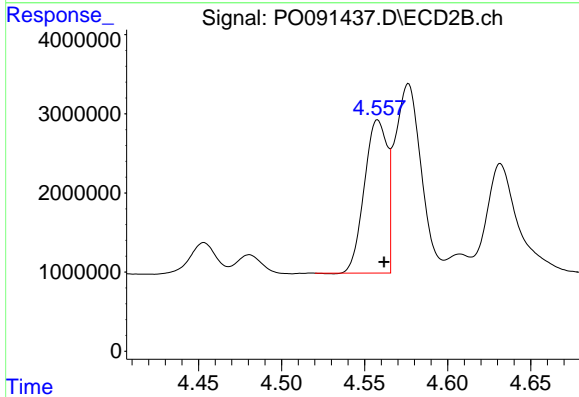
R.T.: 5.362 min
Delta R.T.: -0.004 min
Response: 12344799
Conc: 437.52 ng/ml



#21 AR-1248-1

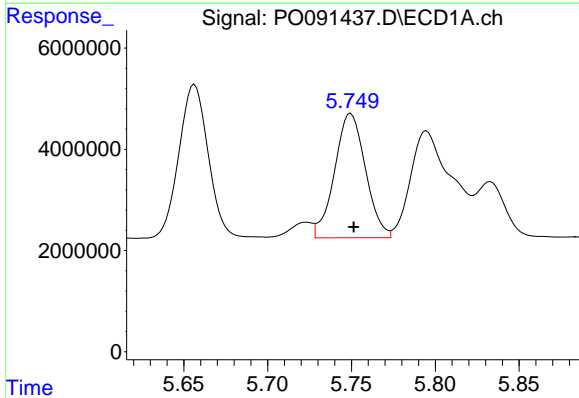
R.T.: 5.473 min
 Delta R.T.: -0.002 min
 Response: 51642259
 Conc: 724.98 ng/ml

Instrument :
 ECD_O
 ClientSampleId :



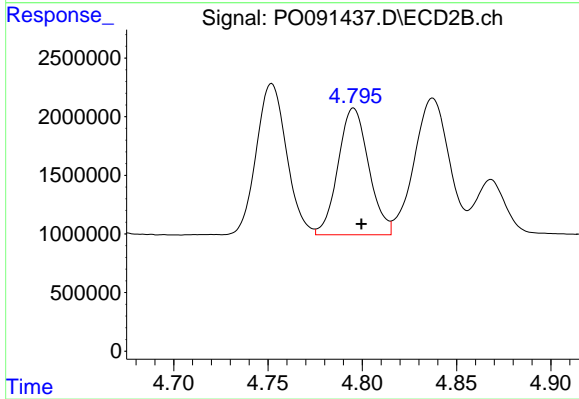
#21 AR-1248-1

R.T.: 4.558 min
 Delta R.T.: -0.004 min
 Response: 18480440
 Conc: 785.54 ng/ml



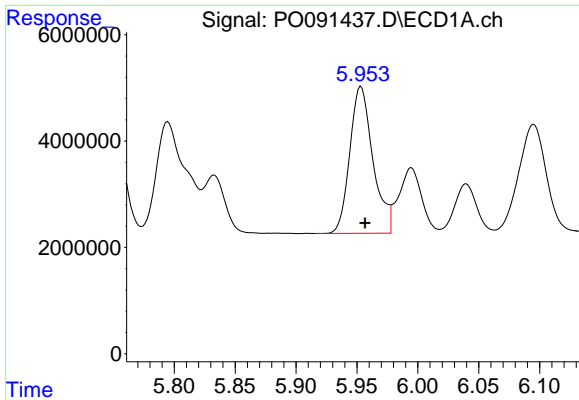
#22 AR-1248-2

R.T.: 5.750 min
 Delta R.T.: -0.002 min
 Response: 31584294
 Conc: 297.94 ng/ml



#22 AR-1248-2

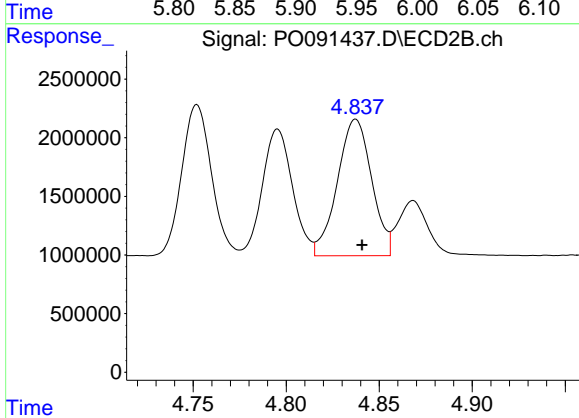
R.T.: 4.795 min
 Delta R.T.: -0.004 min
 Response: 12225199
 Conc: 373.40 ng/ml



#23 AR-1248-3

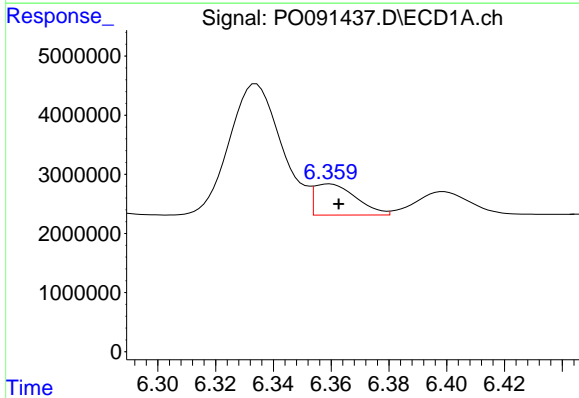
R.T.: 5.953 min
 Delta R.T.: -0.003 min
 Response: 36517736
 Conc: 310.31 ng/ml

Instrument :
 ECD_O
 ClientSampleId :



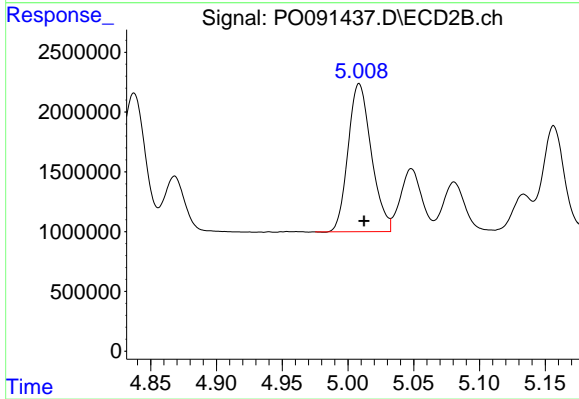
#23 AR-1248-3

R.T.: 4.837 min
 Delta R.T.: -0.003 min
 Response: 14962712
 Conc: 440.86 ng/ml



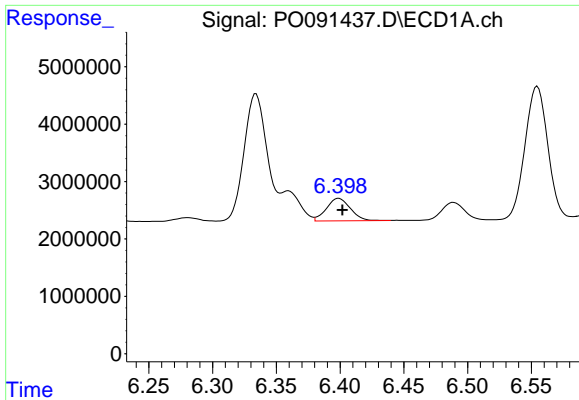
#24 AR-1248-4

R.T.: 6.359 min
 Delta R.T.: -0.003 min
 Response: 5271489
 Conc: 43.11 ng/ml



#24 AR-1248-4

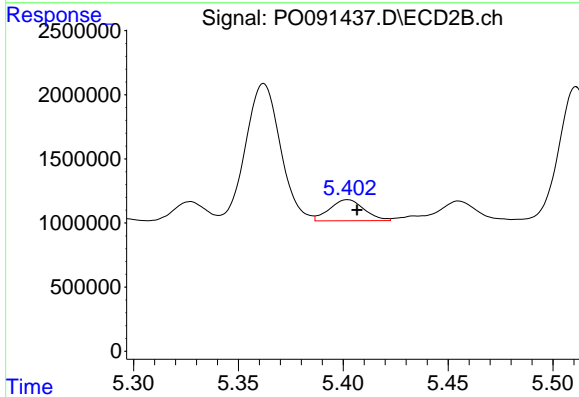
R.T.: 5.009 min
 Delta R.T.: -0.004 min
 Response: 15208090
 Conc: 381.13 ng/ml



#25 AR-1248-5

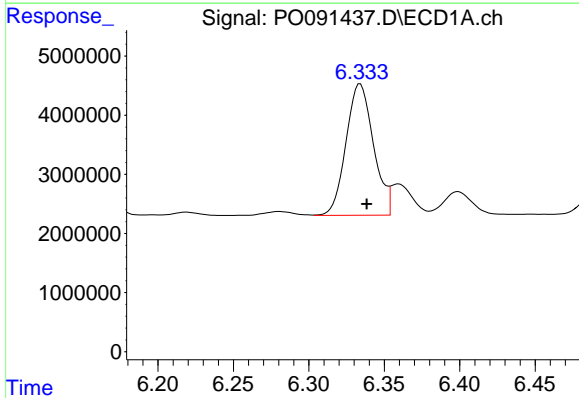
R.T.: 6.399 min
 Delta R.T.: -0.003 min
 Response: 5121983
 Conc: 44.66 ng/ml

Instrument :
 ECD_O
 ClientSampleId :



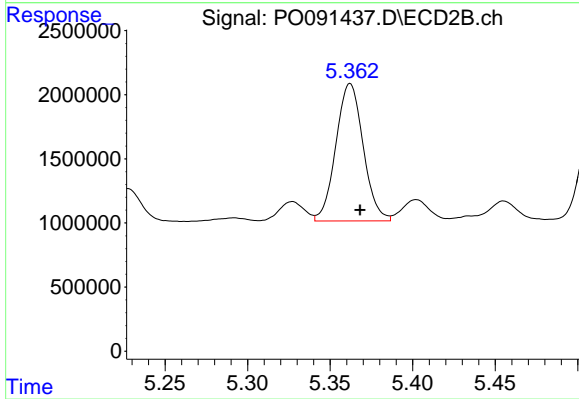
#25 AR-1248-5

R.T.: 5.402 min
 Delta R.T.: -0.004 min
 Response: 1885315
 Conc: 52.60 ng/ml



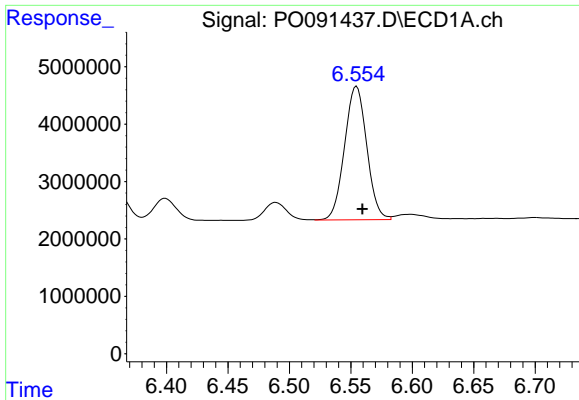
#26 AR-1254-1

R.T.: 6.334 min
 Delta R.T.: -0.004 min
 Response: 28090445
 Conc: 223.67 ng/ml



#26 AR-1254-1

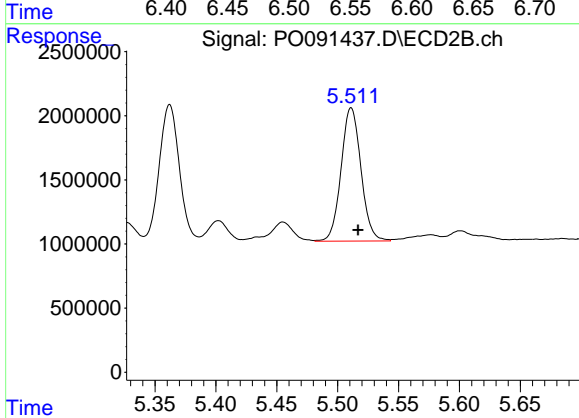
R.T.: 5.362 min
 Delta R.T.: -0.006 min
 Response: 12344799
 Conc: 210.64 ng/ml



#27 AR-1254-2

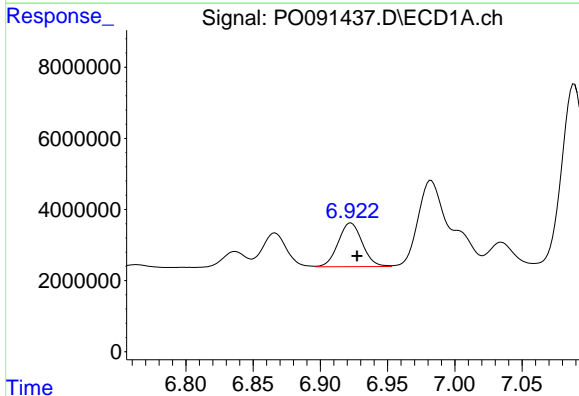
R.T.: 6.555 min
 Delta R.T.: -0.005 min
 Response: 29279078
 Conc: 155.28 ng/ml

Instrument :
 ECD_O
 ClientSampleId :



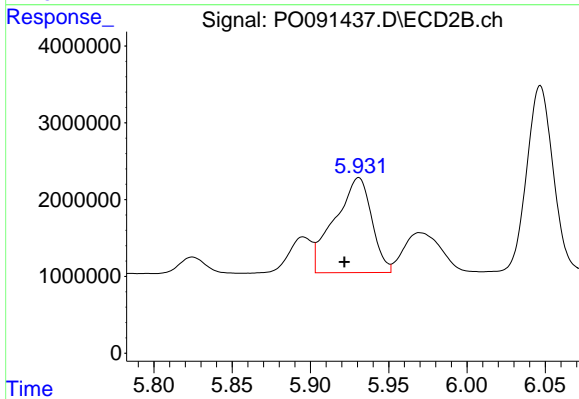
#27 AR-1254-2

R.T.: 5.511 min
 Delta R.T.: -0.006 min
 Response: 11805809
 Conc: 221.21 ng/ml



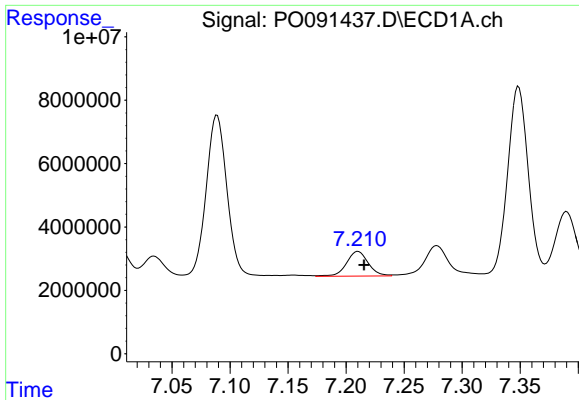
#28 AR-1254-3

R.T.: 6.923 min
 Delta R.T.: -0.005 min
 Response: 15299633
 Conc: 81.63 ng/ml



#28 AR-1254-3

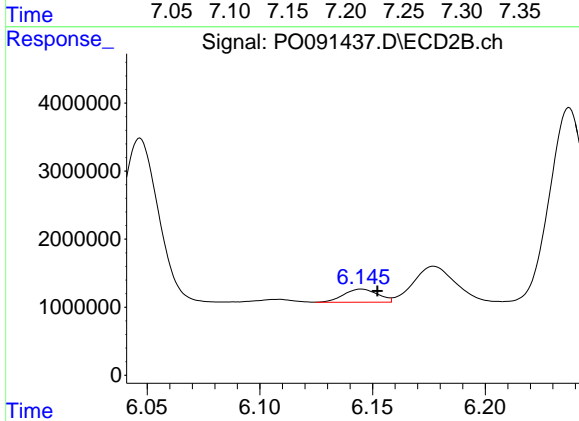
R.T.: 5.931 min
 Delta R.T.: 0.009 min
 Response: 20342515
 Conc: 249.69 ng/ml



#29 AR-1254-4

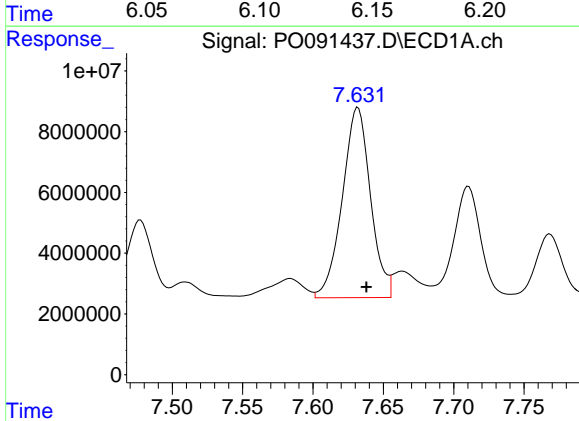
R.T.: 7.210 min
 Delta R.T.: -0.005 min
 Response: 10199213
 Conc: 73.83 ng/ml

Instrument :
 ECD_O
 ClientSampleId :



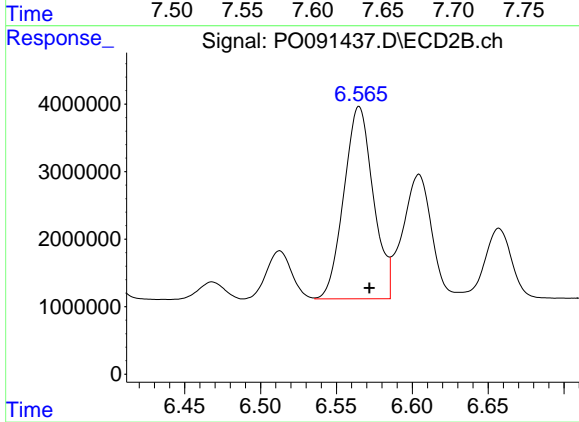
#29 AR-1254-4

R.T.: 6.145 min
 Delta R.T.: -0.007 min
 Response: 2030447
 Conc: 41.50 ng/ml



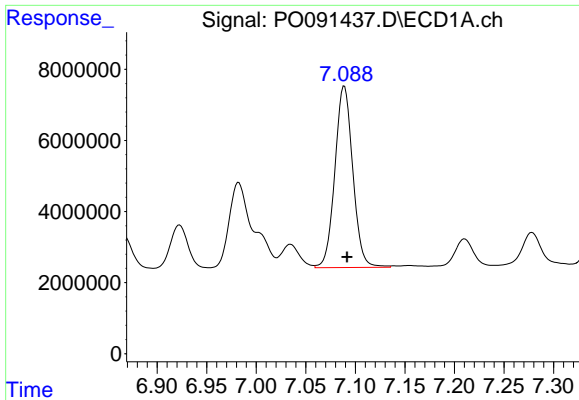
#30 AR-1254-5

R.T.: 7.632 min
 Delta R.T.: -0.006 min
 Response: 87339369
 Conc: 569.25 ng/ml



#30 AR-1254-5

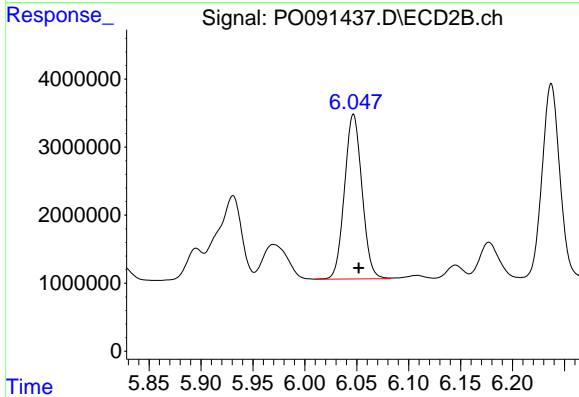
R.T.: 6.565 min
 Delta R.T.: -0.007 min
 Response: 38412201
 Conc: 515.29 ng/ml



#31 AR-1260-1

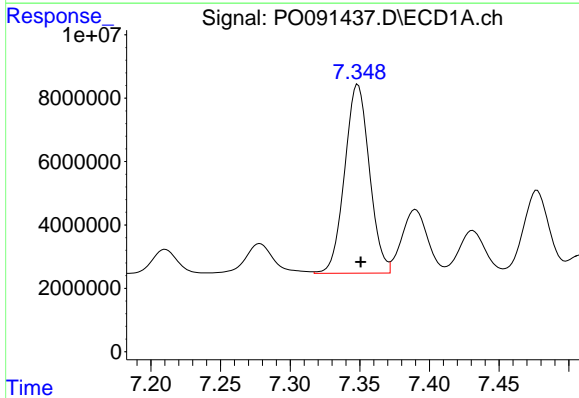
R.T.: 7.089 min
 Delta R.T.: -0.003 min
 Response: 64092497
 Conc: 417.79 ng/ml

Instrument :
 ECD_O
 ClientSampleId :



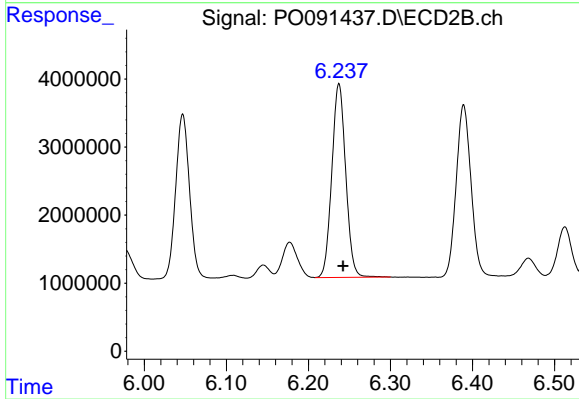
#31 AR-1260-1

R.T.: 6.047 min
 Delta R.T.: -0.005 min
 Response: 28366750
 Conc: 489.91 ng/ml



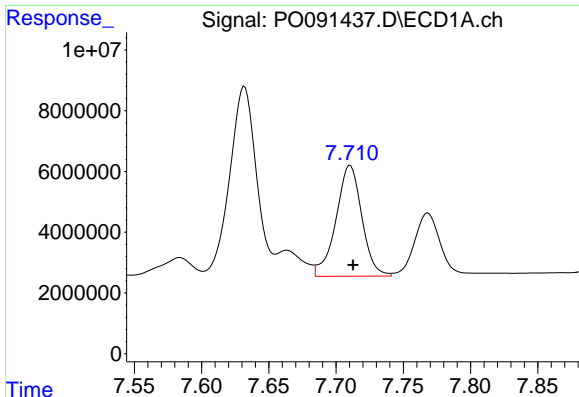
#32 AR-1260-2

R.T.: 7.349 min
 Delta R.T.: -0.002 min
 Response: 73703869
 Conc: 422.27 ng/ml



#32 AR-1260-2

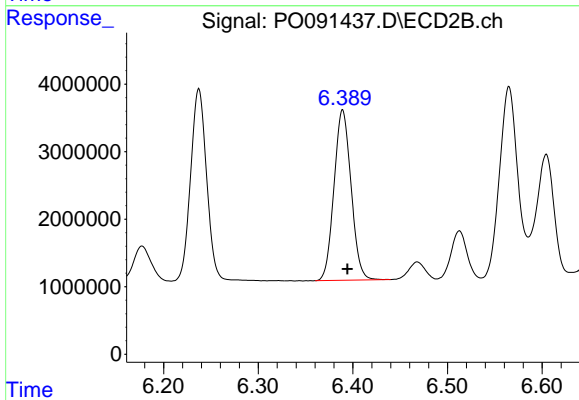
R.T.: 6.237 min
 Delta R.T.: -0.005 min
 Response: 33538459
 Conc: 491.15 ng/ml



#33 AR-1260-3

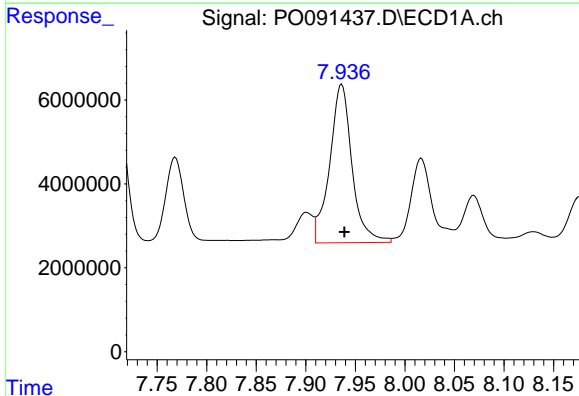
R.T.: 7.710 min
 Delta R.T.: -0.002 min
 Response: 48800997
 Conc: 429.31 ng/ml

Instrument :
 ECD_O
 ClientSampleId :



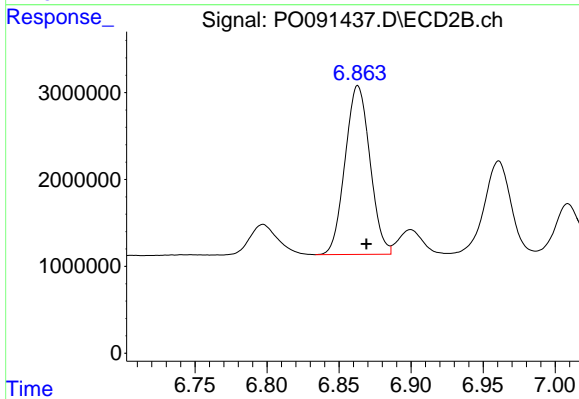
#33 AR-1260-3

R.T.: 6.389 min
 Delta R.T.: -0.005 min
 Response: 31615557
 Conc: 482.00 ng/ml



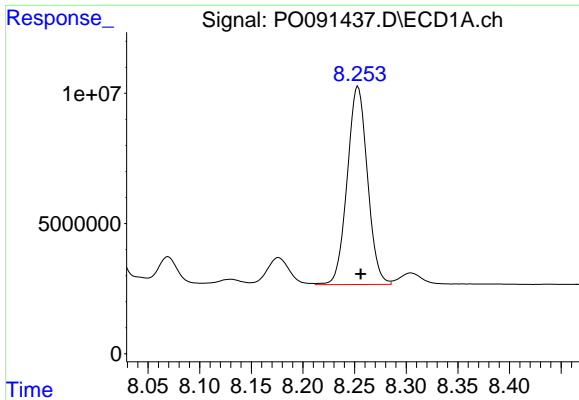
#34 AR-1260-4

R.T.: 7.936 min
 Delta R.T.: -0.003 min
 Response: 59234916
 Conc: 437.13 ng/ml



#34 AR-1260-4

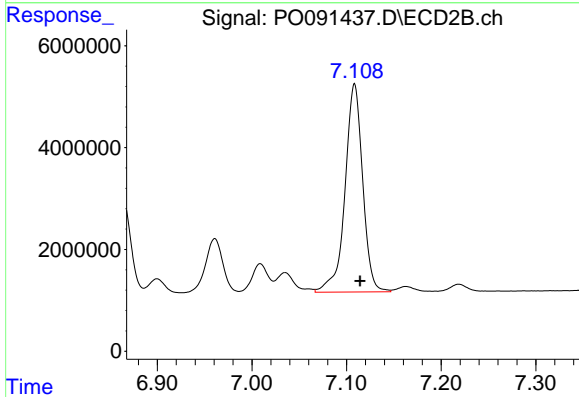
R.T.: 6.863 min
 Delta R.T.: -0.006 min
 Response: 23346771
 Conc: 488.84 ng/ml



#35 AR-1260-5

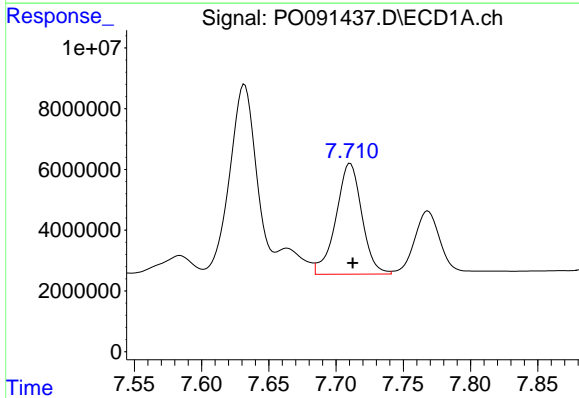
R.T.: 8.253 min
 Delta R.T.: -0.003 min
 Response: 103718771
 Conc: 408.34 ng/ml

Instrument :
 ECD_O
 ClientSampleId :



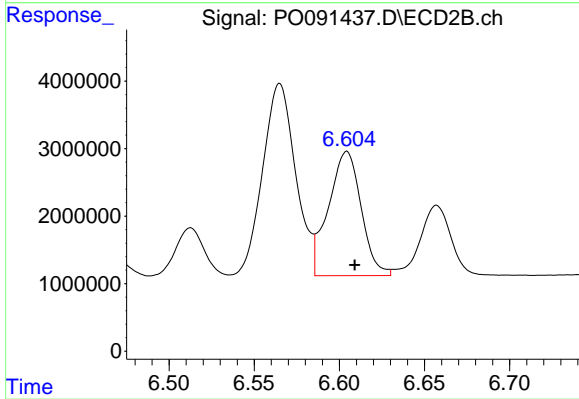
#35 AR-1260-5

R.T.: 7.108 min
 Delta R.T.: -0.006 min
 Response: 53050142
 Conc: 487.99 ng/ml



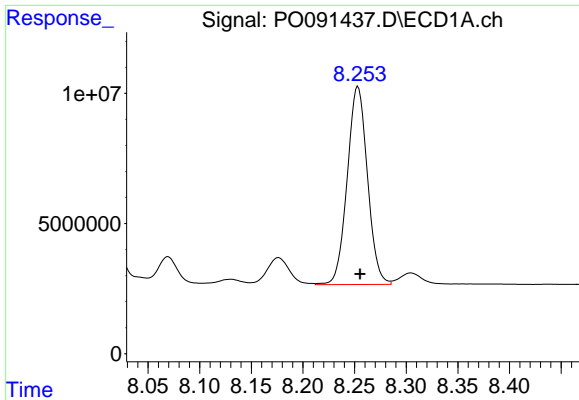
#36 AR-1262-1

R.T.: 7.710 min
 Delta R.T.: -0.002 min
 Response: 48800997
 Conc: 267.09 ng/ml



#36 AR-1262-1

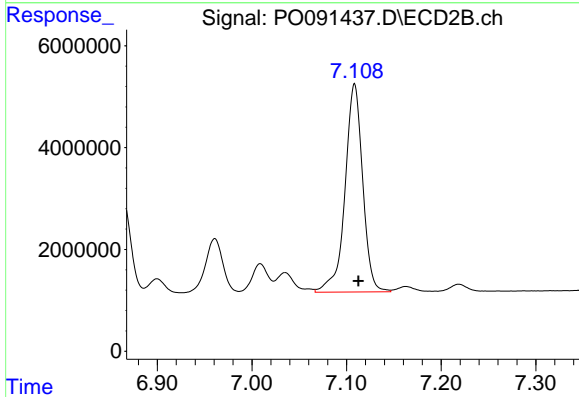
R.T.: 6.604 min
 Delta R.T.: -0.005 min
 Response: 24601496
 Conc: 327.31 ng/ml



#37 AR-1262-2

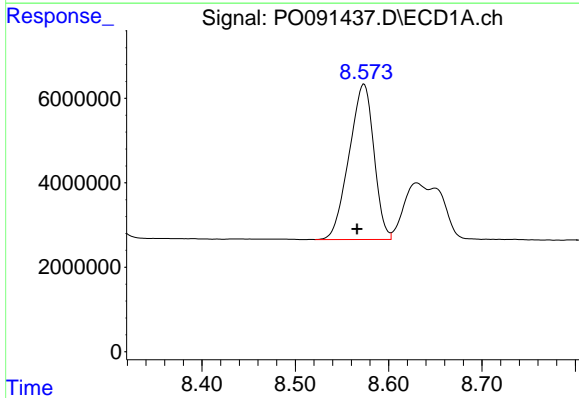
R.T.: 8.253 min
 Delta R.T.: -0.002 min
 Response: 103718771
 Conc: 335.30 ng/ml

Instrument :
 ECD_O
 ClientSampleId :



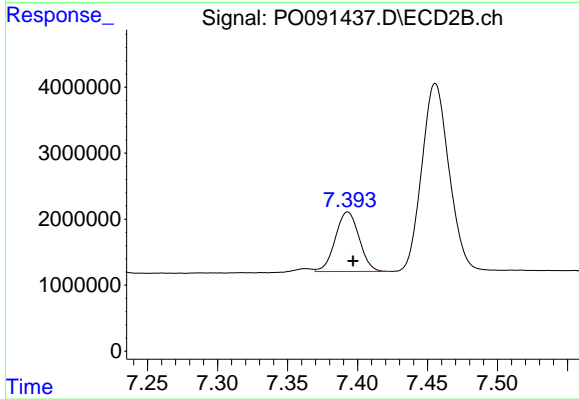
#37 AR-1262-2

R.T.: 7.108 min
 Delta R.T.: -0.004 min
 Response: 53050142
 Conc: 416.73 ng/ml



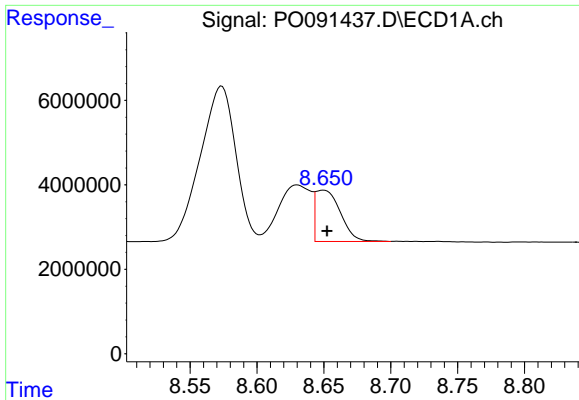
#38 AR-1262-3

R.T.: 8.574 min
 Delta R.T.: 0.007 min
 Response: 67973625
 Conc: 315.27 ng/ml



#38 AR-1262-3

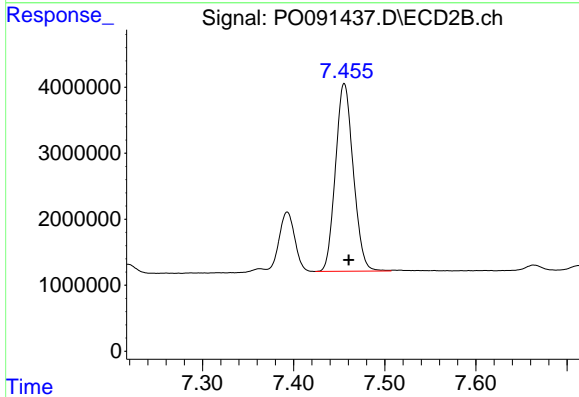
R.T.: 7.393 min
 Delta R.T.: -0.004 min
 Response: 10732604
 Conc: 203.66 ng/ml



#39 AR-1262-4

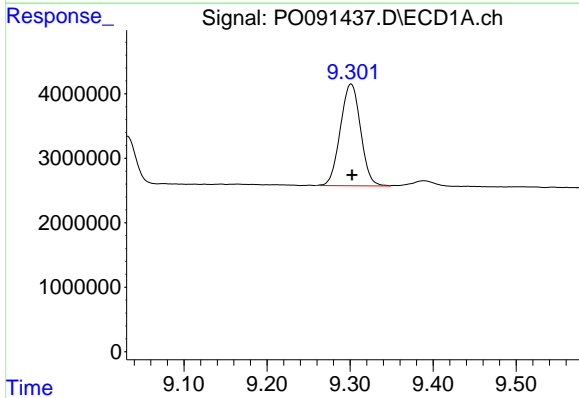
R.T.: 8.650 min
Delta R.T.: -0.002 min
Response: 15668195
Conc: 157.41 ng/ml

Instrument :
ECD_O
ClientSampleId :



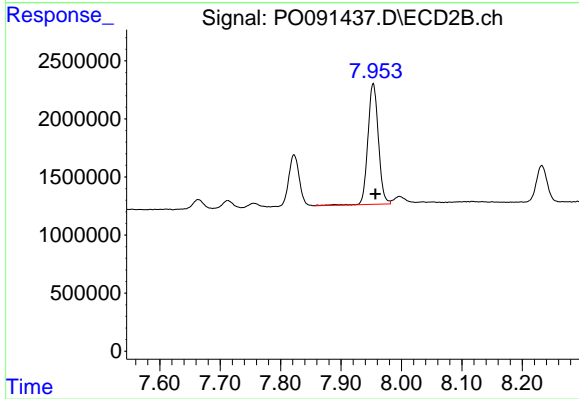
#39 AR-1262-4

R.T.: 7.456 min
Delta R.T.: -0.005 min
Response: 38593644
Conc: 406.35 ng/ml



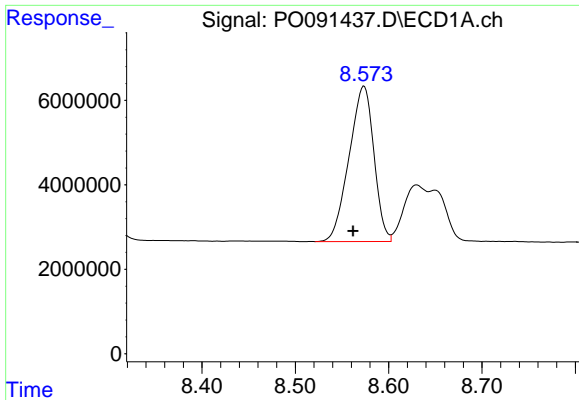
#40 AR-1262-5

R.T.: 9.301 min
Delta R.T.: -0.001 min
Response: 26703568
Conc: 231.34 ng/ml



#40 AR-1262-5

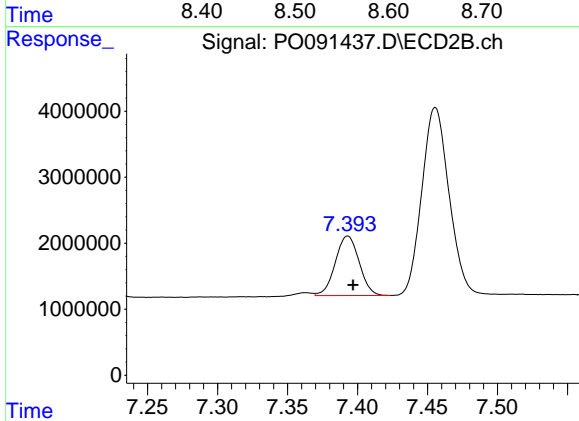
R.T.: 7.953 min
Delta R.T.: -0.004 min
Response: 12552393
Conc: 275.22 ng/ml



#41 AR-1268-1

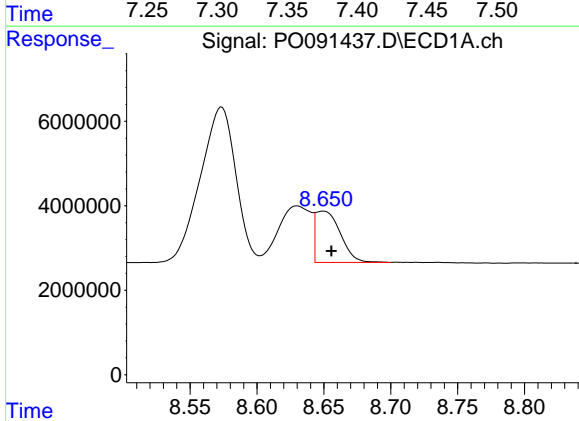
R.T.: 8.574 min
 Delta R.T.: 0.012 min
 Response: 67973625
 Conc: 184.59 ng/ml

Instrument :
 ECD_O
 ClientSampleId :



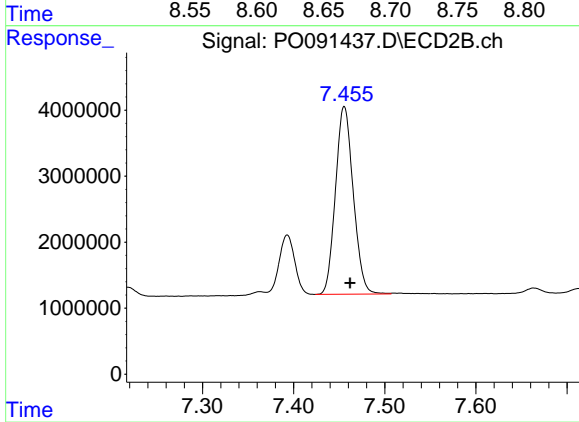
#41 AR-1268-1

R.T.: 7.393 min
 Delta R.T.: -0.004 min
 Response: 10732604
 Conc: 71.95 ng/ml



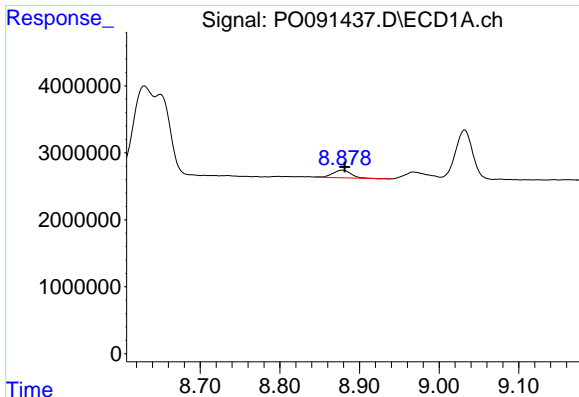
#42 AR-1268-2

R.T.: 8.650 min
 Delta R.T.: -0.006 min
 Response: 15668195
 Conc: 47.12 ng/ml



#42 AR-1268-2

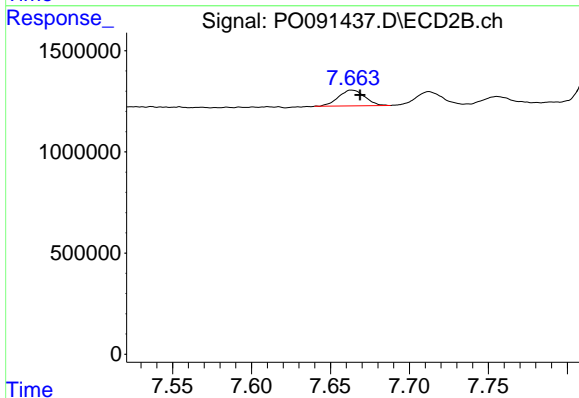
R.T.: 7.456 min
 Delta R.T.: -0.006 min
 Response: 38593644
 Conc: 287.22 ng/ml



#43 AR-1268-3

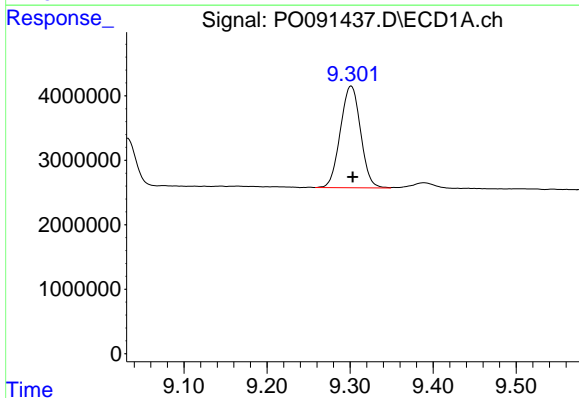
R.T.: 8.879 min
 Delta R.T.: -0.003 min
 Response: 1783571
 Conc: 6.26 ng/ml

Instrument :
 ECD_O
 ClientSampleId :



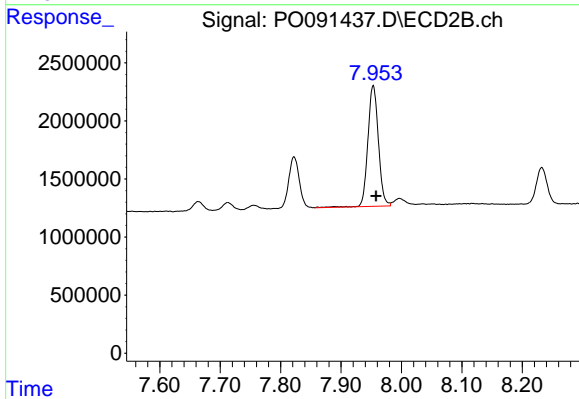
#43 AR-1268-3

R.T.: 7.664 min
 Delta R.T.: -0.005 min
 Response: 904121
 Conc: 7.83 ng/ml



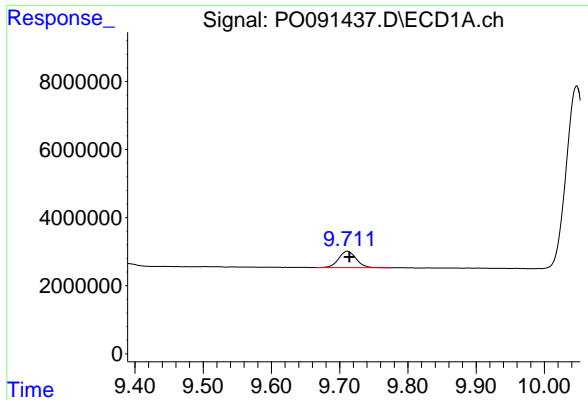
#44 AR-1268-4

R.T.: 9.301 min
 Delta R.T.: -0.002 min
 Response: 26703568
 Conc: 216.32 ng/ml



#44 AR-1268-4

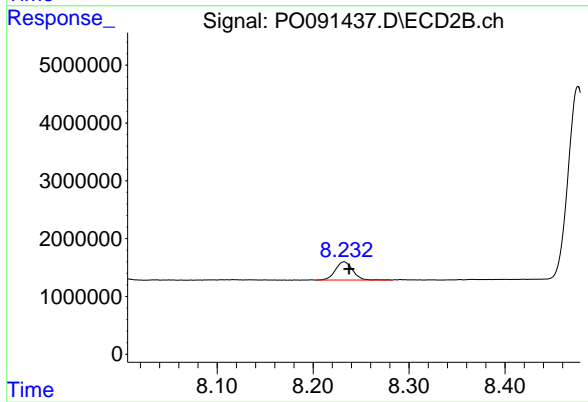
R.T.: 7.953 min
 Delta R.T.: -0.004 min
 Response: 12552393
 Conc: 254.44 ng/ml



#45 AR-1268-5

R.T.: 9.711 min
Delta R.T.: -0.003 min
Response: 8675701
Conc: 9.53 ng/ml

Instrument :
ECD_O
ClientSampleId :



#45 AR-1268-5

R.T.: 8.232 min
Delta R.T.: -0.005 min
Response: 3934575
Conc: 11.62 ng/ml