

Data Path : Z:\pestpcbsrv\HPCHEM1\ECD_0\Data\PO121625\
 Data File : PO115925.D
 Signal(s) : Signal #1: ECD1A.ch Signal #2: ECD2B.ch
 Acq On : 16 Dec 2025 22:49
 Operator : YP/AJ
 Sample : AR1242CCC500
 Misc :
 ALS Vial : 4 Sample Multiplier: 1

Instrument :
 ECD_0
ClientSampleId :
 AR1242CCC500

Manual Integrations
APPROVED

Reviewed By :Rahul Chavli 12/17/2025
 Supervised By :Yogesh Patel 12/17/2025

Integration File signal 1: autoint1.e
 Integration File signal 2: autoint2.e
 Quant Time: Dec 17 01:18:47 2025
 Quant Method : Z:\pestpcbsrv\HPCHEM1\ECD_0\methods\PO120425.M
 Quant Title : GC EXTRACTABLES
 QLast Update : Fri Dec 05 02:11:05 2025
 Response via : Initial Calibration
 Integrator: ChemStation

Volume Inj. : 2 µl
 Signal #1 Phase : ZB-MR1 Signal #2 Phase: ZB-MR2
 Signal #1 Info : 30Mx0.32mmx 0.50µ Signal #2 Info : 30M x 0.32mm x 0.25µm

Compound	RT#1	RT#2	Resp#1	Resp#2	ng/ml	ng/ml

System Monitoring Compounds						
1) SA Tetrachlo...	4.331	3.634	410.0E6	248.7E6	52.780	51.041
2) SA Decachlor...	9.902	8.611	264.2E6	190.0E6	50.225	44.176m
Target Compounds						
16) L4 AR-1242-1	5.469	4.707	105.4E6	77456726	530.719	543.982
17) L4 AR-1242-2	5.490	4.725	164.8E6	110.8E6	562.533	529.259
18) L4 AR-1242-3	5.552	4.899	93507742	61635494	553.903	516.028
19) L4 AR-1242-4	5.648	4.984	75453924	58673071	552.098	537.834
20) L4 AR-1242-5	6.373	5.502	82622863	74576884	545.567	539.923

(f)=RT Delta > 1/2 Window (#)=Amounts differ by > 25% (m)=manual int.

Data Path : Z:\pestpcbsrv\HPCHEM1\ECD_O\Data\PO121625\
 Data File : PO115925.D
 Signal(s) : Signal #1: ECD1A.ch Signal #2: ECD2B.ch
 Acq On : 16 Dec 2025 22:49
 Operator : YP/AJ
 Sample : AR1242CCC500
 Misc :
 ALS Vial : 4 Sample Multiplier: 1

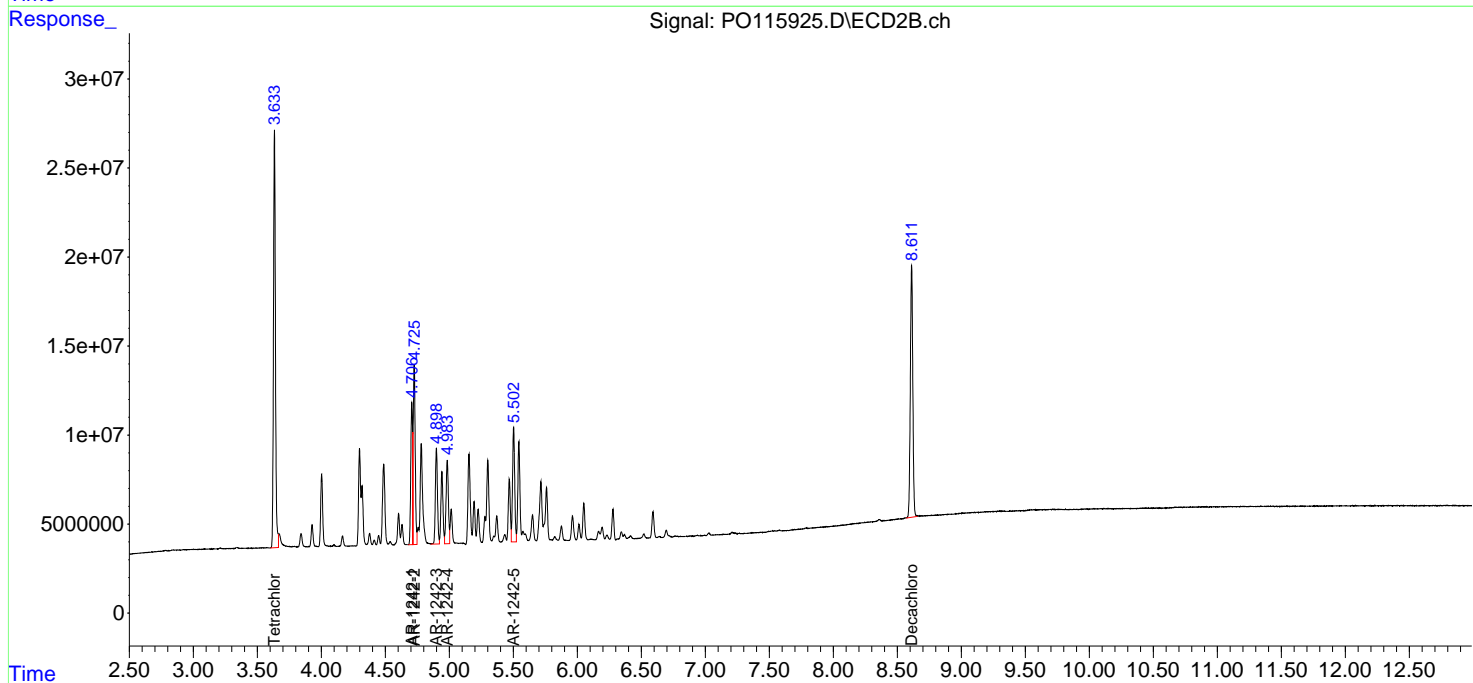
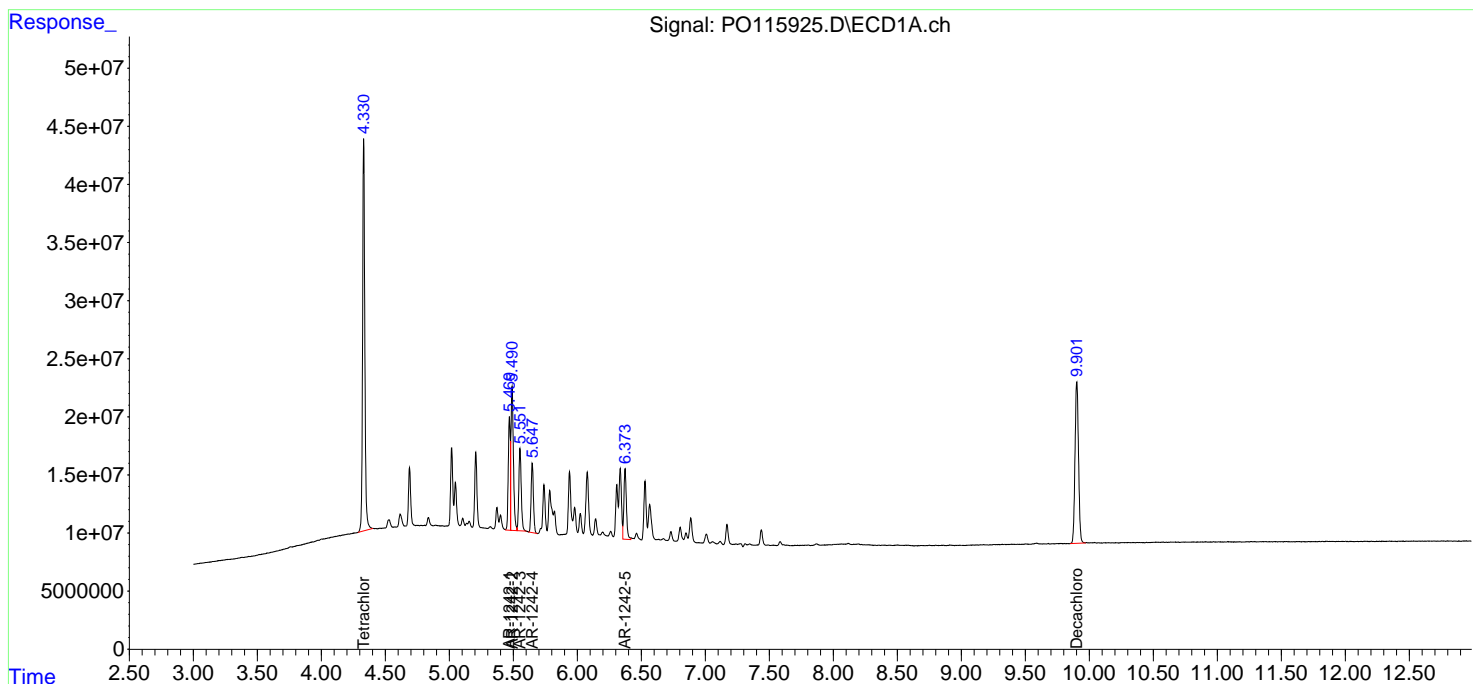
Instrument :
 ECD_O
 ClientSampleId :
 AR1242CCC500

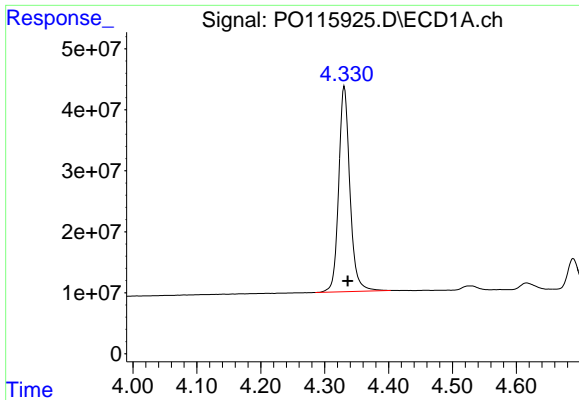
Manual Integrations
 APPROVED

Reviewed By :Rahul Chavli 12/17/2025
 Supervised By :Yogesh Patel 12/17/2025

Integration File signal 1: autoint1.e
 Integration File signal 2: autoint2.e
 Quant Time: Dec 17 01:18:47 2025
 Quant Method : Z:\pestpcbsrv\HPCHEM1\ECD_O\methods\PO120425.M
 Quant Title : GC EXTRACTABLES
 QLast Update : Fri Dec 05 02:11:05 2025
 Response via : Initial Calibration
 Integrator: ChemStation

Volume Inj. : 2 µl
 Signal #1 Phase : ZB-MR1 Signal #2 Phase: ZB-MR2
 Signal #1 Info : 30Mx0.32mmx 0.50µ Signal #2 Info : 30M x 0.32mm x 0.25µm



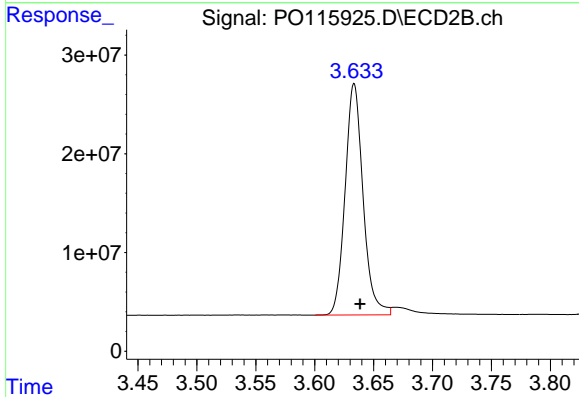


#1 Tetrachloro-m-xylene
 R.T.: 4.331 min
 Delta R.T.: -0.005 min
 Response: 409953710
 Conc: 52.78 ng/ml

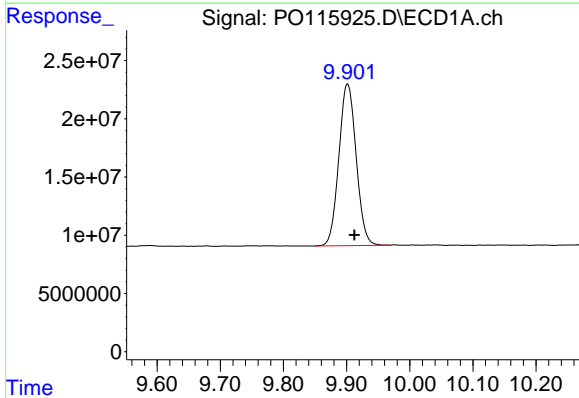
Instrument :
 ECD_O
 ClientSampleId :
 AR1242CCC500

Manual Integrations
 APPROVED

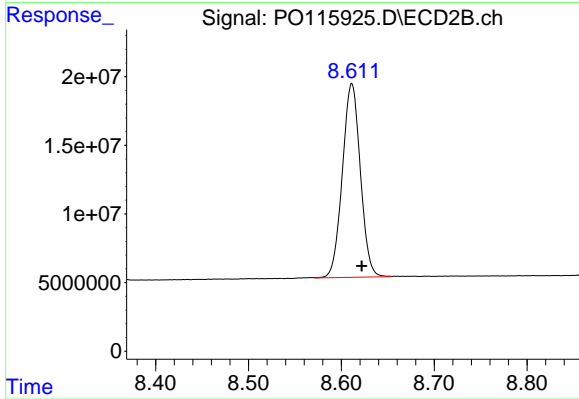
Reviewed By :Rahul Chavli 12/17/2025
 Supervised By :Yogesh Patel 12/17/2025



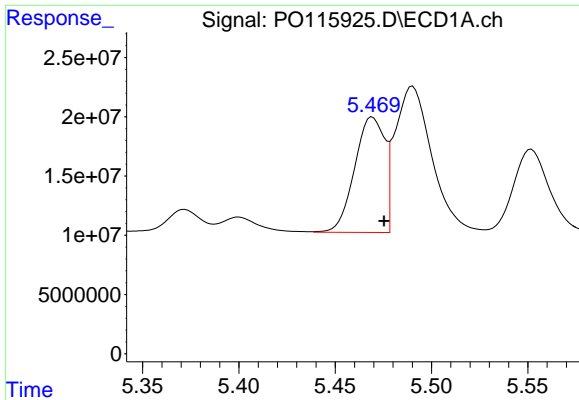
#1 Tetrachloro-m-xylene
 R.T.: 3.634 min
 Delta R.T.: -0.005 min
 Response: 248738700
 Conc: 51.04 ng/ml



#2 Decachlorobiphenyl
 R.T.: 9.902 min
 Delta R.T.: -0.010 min
 Response: 264234142
 Conc: 50.22 ng/ml



#2 Decachlorobiphenyl
 R.T.: 8.611 min
 Delta R.T.: -0.011 min
 Response: 189965736
 Conc: 44.18 ng/ml m

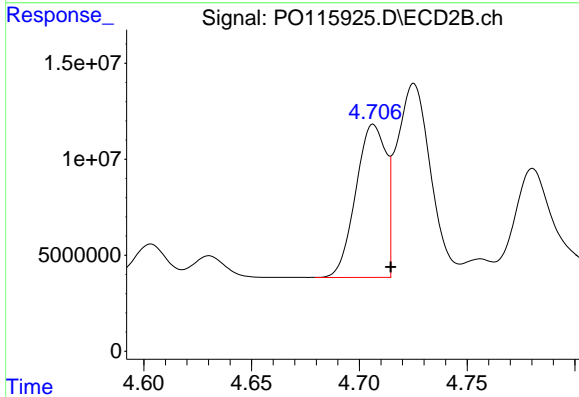


#16 AR-1242-1

R.T.: 5.469 min
 Delta R.T.: -0.006 min
 Response: 105413050
 Conc: 530.72 ng/ml

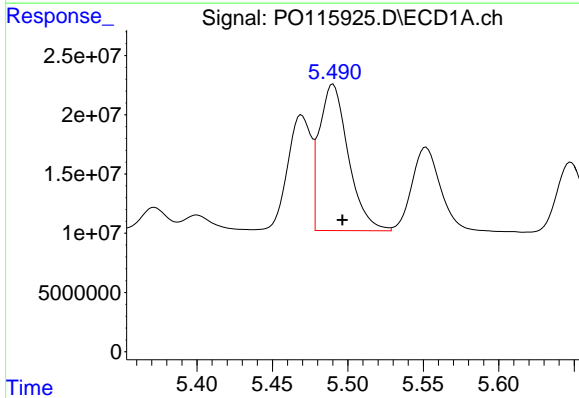
Instrument :
 ECD_O
 ClientSampleId :
 AR1242CCC500

Manual Integrations
APPROVED
 Reviewed By :Rahul Chavli 12/17/2025
 Supervised By :Yogesh Patel 12/17/2025



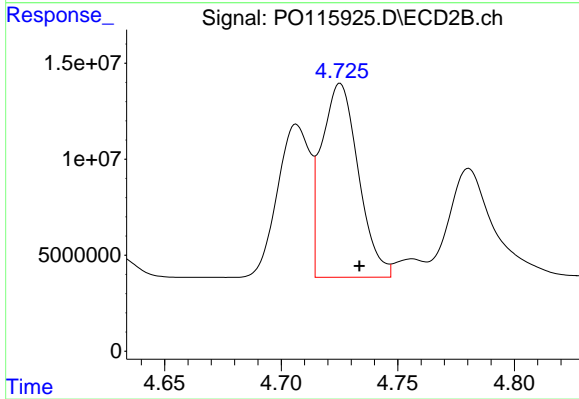
#16 AR-1242-1

R.T.: 4.707 min
 Delta R.T.: -0.008 min
 Response: 77456726
 Conc: 543.98 ng/ml



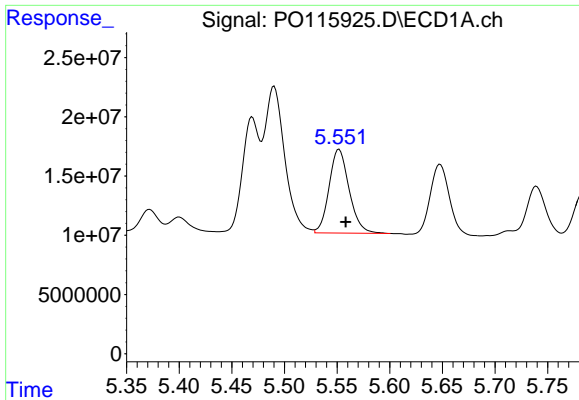
#17 AR-1242-2

R.T.: 5.490 min
 Delta R.T.: -0.006 min
 Response: 164761288
 Conc: 562.53 ng/ml



#17 AR-1242-2

R.T.: 4.725 min
 Delta R.T.: -0.008 min
 Response: 110807341
 Conc: 529.26 ng/ml



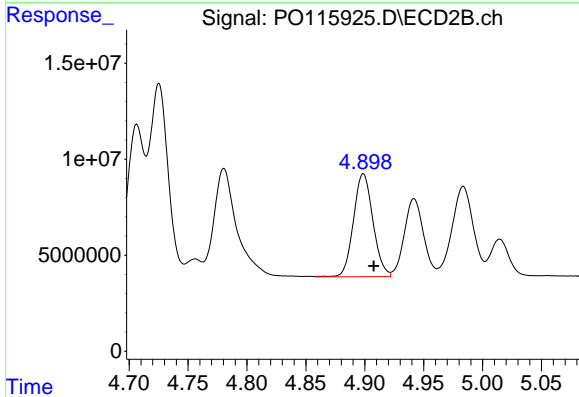
#18 AR-1242-3

R.T.: 5.552 min
 Delta R.T.: -0.006 min
 Response: 93507742
 Conc: 553.90 ng/ml

Instrument :
 ECD_O
 ClientSampleId :
 AR1242CCC500

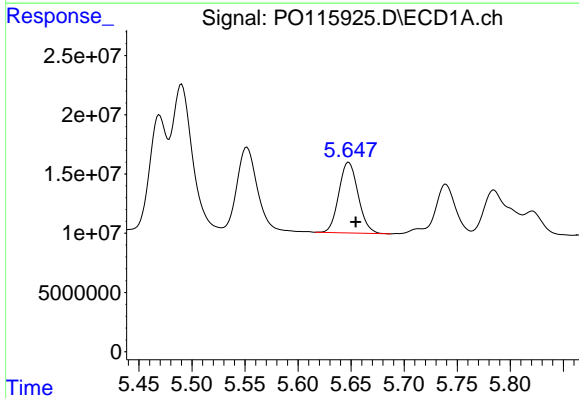
Manual Integrations
 APPROVED

Reviewed By :Rahul Chavli 12/17/2025
 Supervised By :Yogesh Patel 12/17/2025



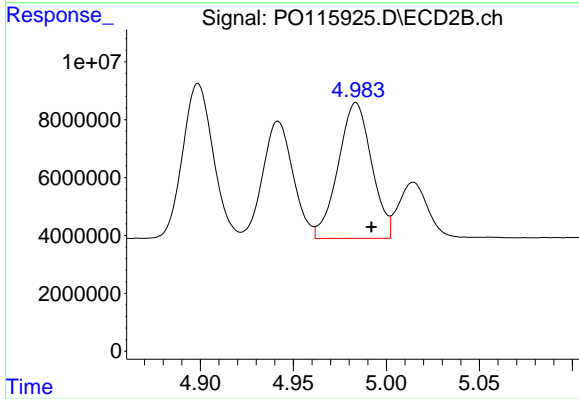
#18 AR-1242-3

R.T.: 4.899 min
 Delta R.T.: -0.009 min
 Response: 61635494
 Conc: 516.03 ng/ml



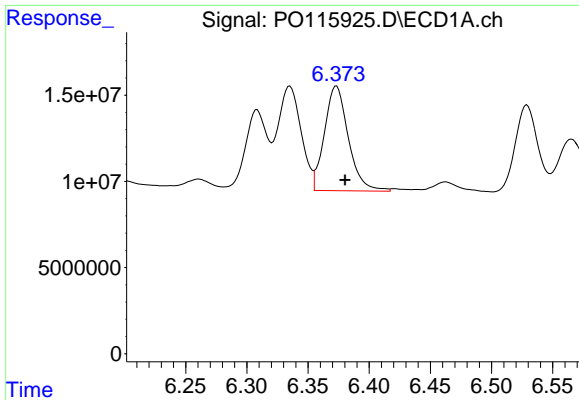
#19 AR-1242-4

R.T.: 5.648 min
 Delta R.T.: -0.006 min
 Response: 75453924
 Conc: 552.10 ng/ml



#19 AR-1242-4

R.T.: 4.984 min
 Delta R.T.: -0.008 min
 Response: 58673071
 Conc: 537.83 ng/ml



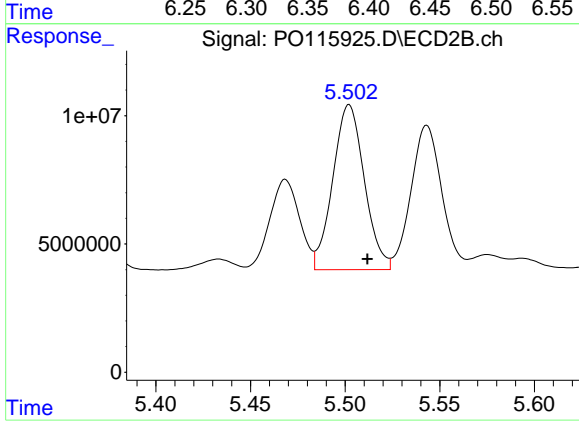
#20 AR-1242-5

R.T.: 6.373 min
 Delta R.T.: -0.007 min
 Response: 82622863
 Conc: 545.57 ng/ml

Instrument :
 ECD_O
 ClientSampleId :
 AR1242CCC500

Manual Integrations
 APPROVED

Reviewed By :Rahul Chavli 12/17/2025
 Supervised By :Yogesh Patel 12/17/2025



#20 AR-1242-5

R.T.: 5.502 min
 Delta R.T.: -0.010 min
 Response: 74576884
 Conc: 539.92 ng/ml